

# V&V Reference Report

## L2 ASCDS Version : 8.4.3

Observation 6546 - L2 Version 4  
Chandra X-Ray Center

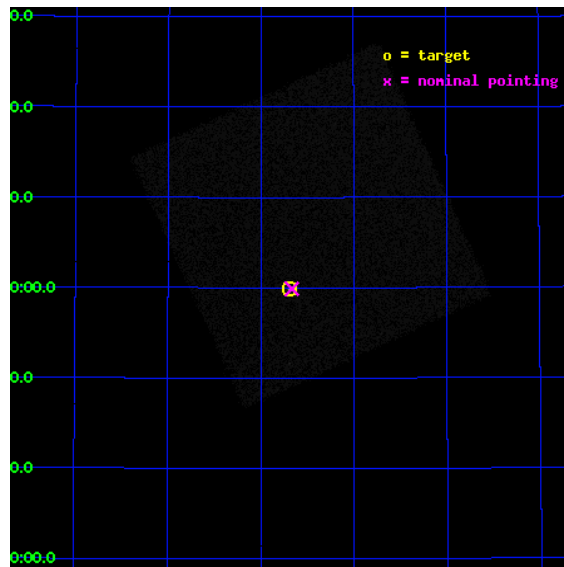
L2 Processing Date : Aug 10 2012

## Contents

<b>1</b>	<b>Front</b>	<b>2</b>
<b>2</b>	<b>OBI</b>	<b>3</b>
2.1	OBI . . . . .	3
2.1.1	Images . . . . .	3
2.1.2	Parameters . . . . .	4
2.1.3	Events . . . . .	4
2.2	Compared Parameters . . . . .	5
2.3	Aspect . . . . .	6
2.4	Star Slots . . . . .	9
2.4.1	Slot 3 . . . . .	9
2.4.2	Slot 4 . . . . .	10
2.4.3	Slot 5 . . . . .	11
2.4.4	Slot 6 . . . . .	12
2.4.5	Slot 7 . . . . .	13
2.5	FID Slots . . . . .	14
2.5.1	Slot 0 . . . . .	14
2.5.2	Slot 1 . . . . .	15
2.5.3	Slot 2 . . . . .	16
<b>A</b>	<b>Summary</b>	<b>17</b>
A.1	Status . . . . .	17
A.2	Comments . . . . .	17

# 1 Front

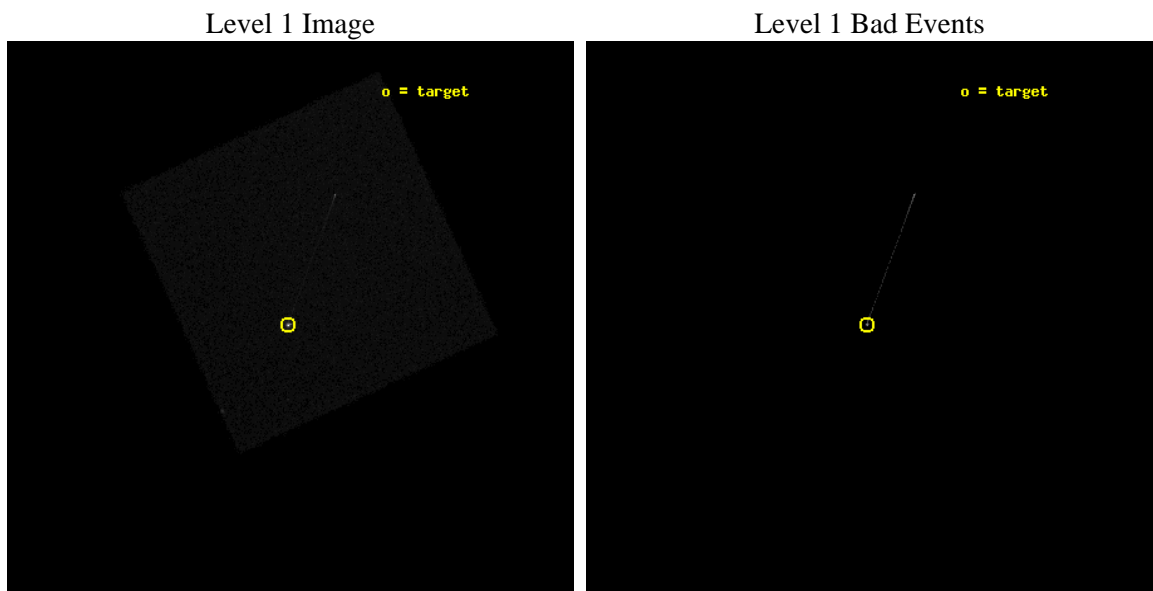
seq_num	290639	Sequence number
obs_id	6546	Observation id
title	Improving the De-Gap Corrections for the HRC-I	Proposal title
observer	Dr. CXC Calibration	Principal investigator
object	Capella	Source name
ra_targ	79.1725	Observer's specified target RA [deg]
dec_targ	45.998	Observer's specified target Dec [deg]
ra_nom	79.166451048418	Nominal RA [deg]
dec_nom	45.998116391095	Nominal Dec [deg]
roll_nom	200.35840499262	Nominal Roll [deg]
revision	4	Processing version of data
ontime	5187.7814901173	[s]
livetime	5140.3563184417	Ontime multiplied by DTCOR
l2events	329484	Number of level 2 events



## 2 OBI

### 2.1 OBI

#### 2.1.1 Images



### 2.1.2 Parameters

obi_num	0	Obi number	sched_exp_time	5000.000000	[s] Scheduled observation exposure time
ascdsver	8.4.5	Processing system revision	ontime	5187.7814901173	[s]
caldbver	4.5.1.1	&#160	l1events	474717	Number of level 1 events
date	2012-08-10T19:27:18	Date and time of file creation			
revision	4	Processing version of data			

### 2.1.3 Events

#### Level 1 Events

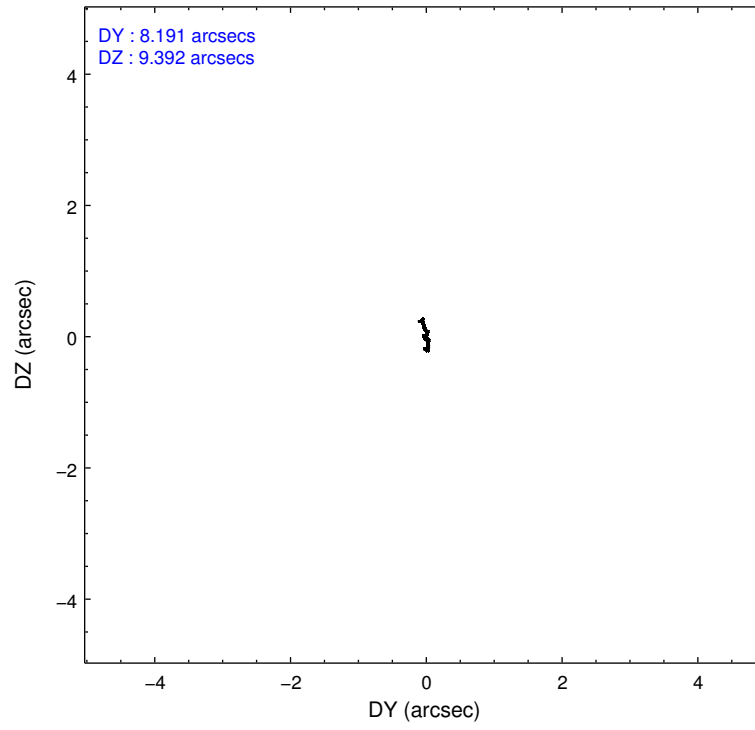
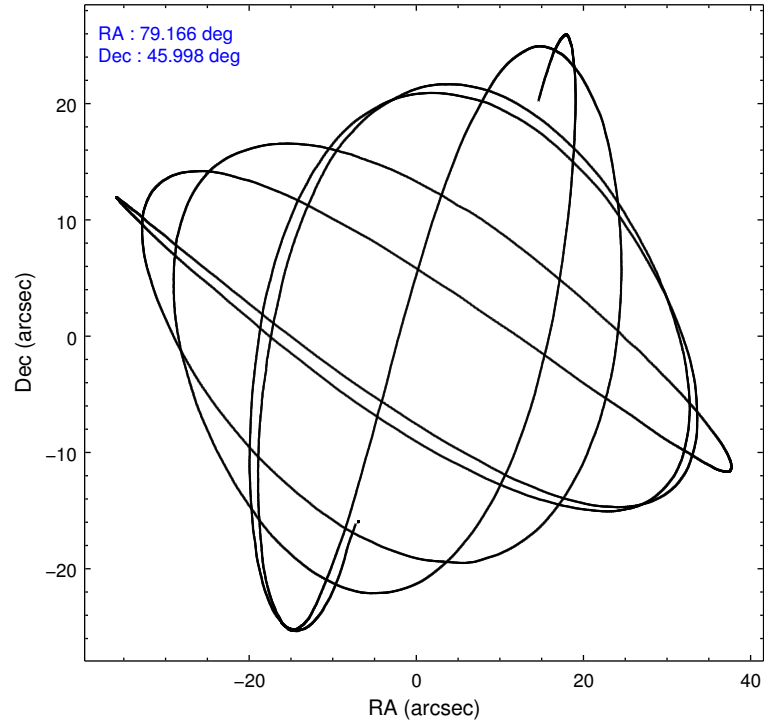
	<b>segment 0</b>
level 1 events	474717
rejected events	36578
rejected %	7%

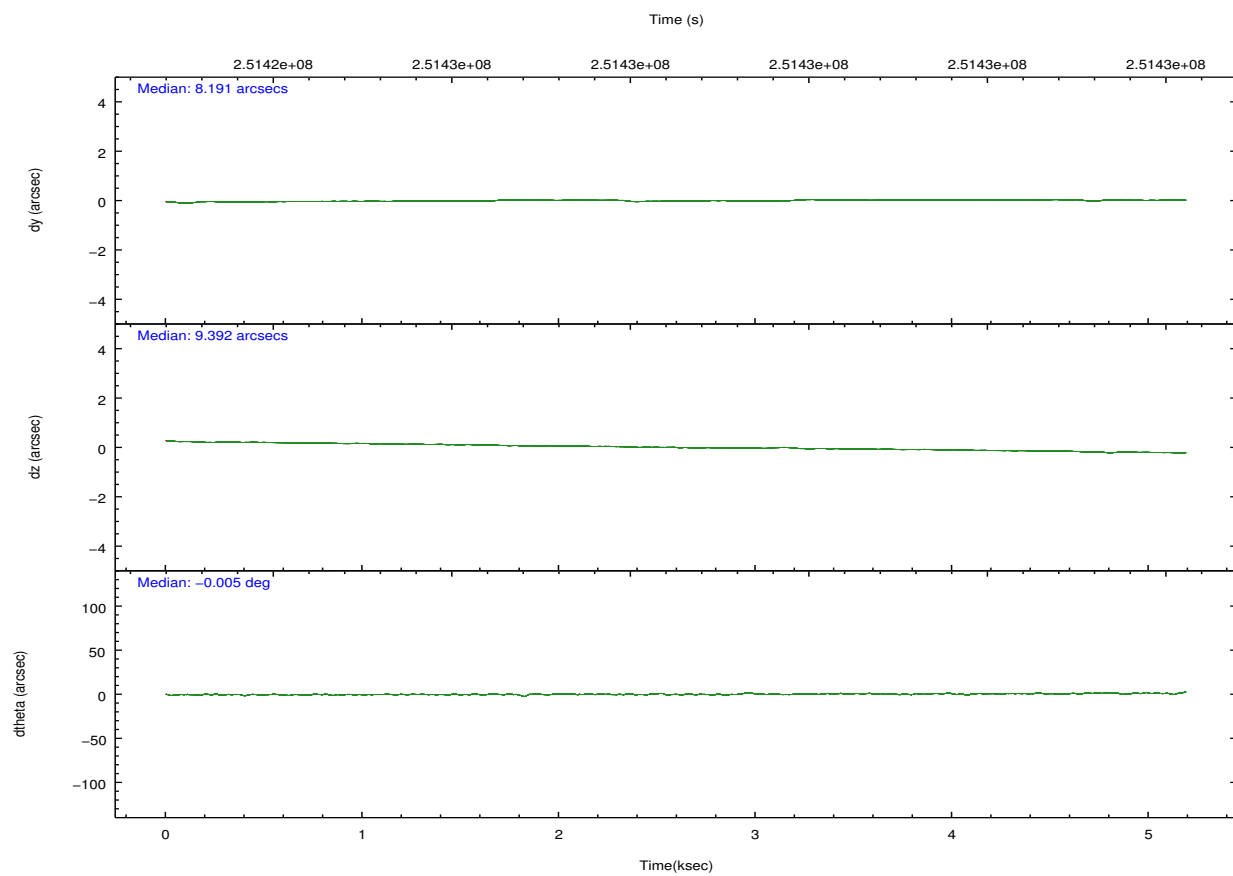
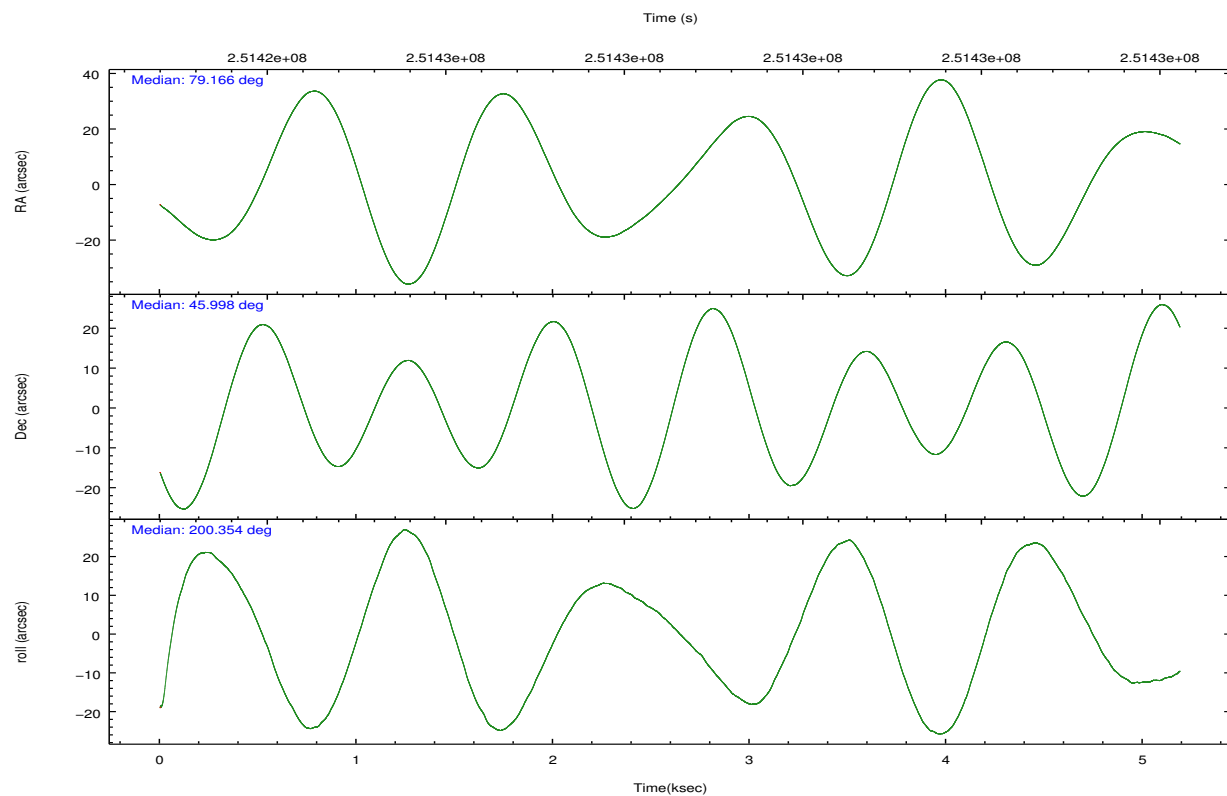


## 2.2 Compared Parameters

Parameter	Planned	Actual	Parameter	Planned	Actual
Instrument	HRC	HRC	Obspar format version number	7	7
Detector	HRC-I	HRC-I	Obspar file type	PREDICTED	ACTUAL
Grating	NONE	NONE	Obspar update status	NONE	UPDATED
Data mode	OBSERVING	OBSERVING			
Observation mode	POINTING	POINTING			
[deg] Pointing RA	79.190699	79.16645104841758			
[deg] Pointing Dec	46.019429	45.99811639109481			
[deg] Pointing Roll	200.436504	200.3584049926177			
[mm] SIM focus pos	-1.040293	-1.038866356238299			
[mm] SIM defocus	0	0.001426264420575141			
[mm] SIM translation stage pos	147.985494	147.9825413886154			
[mm] SIM translation stage offset	-21	-20.99705249701381			
[s] Observation start time (MET)	251424849.184000	251424346.33046			
Observation start date	2005-12-20T00:13:05	2005-12-20T00:05:46			
[s] Observation end time (MET)	251429849.184000	251429983.31822			
Observation end date	2005-12-20T01:36:25	2005-12-20T01:39:43			

## 2.3 Aspect



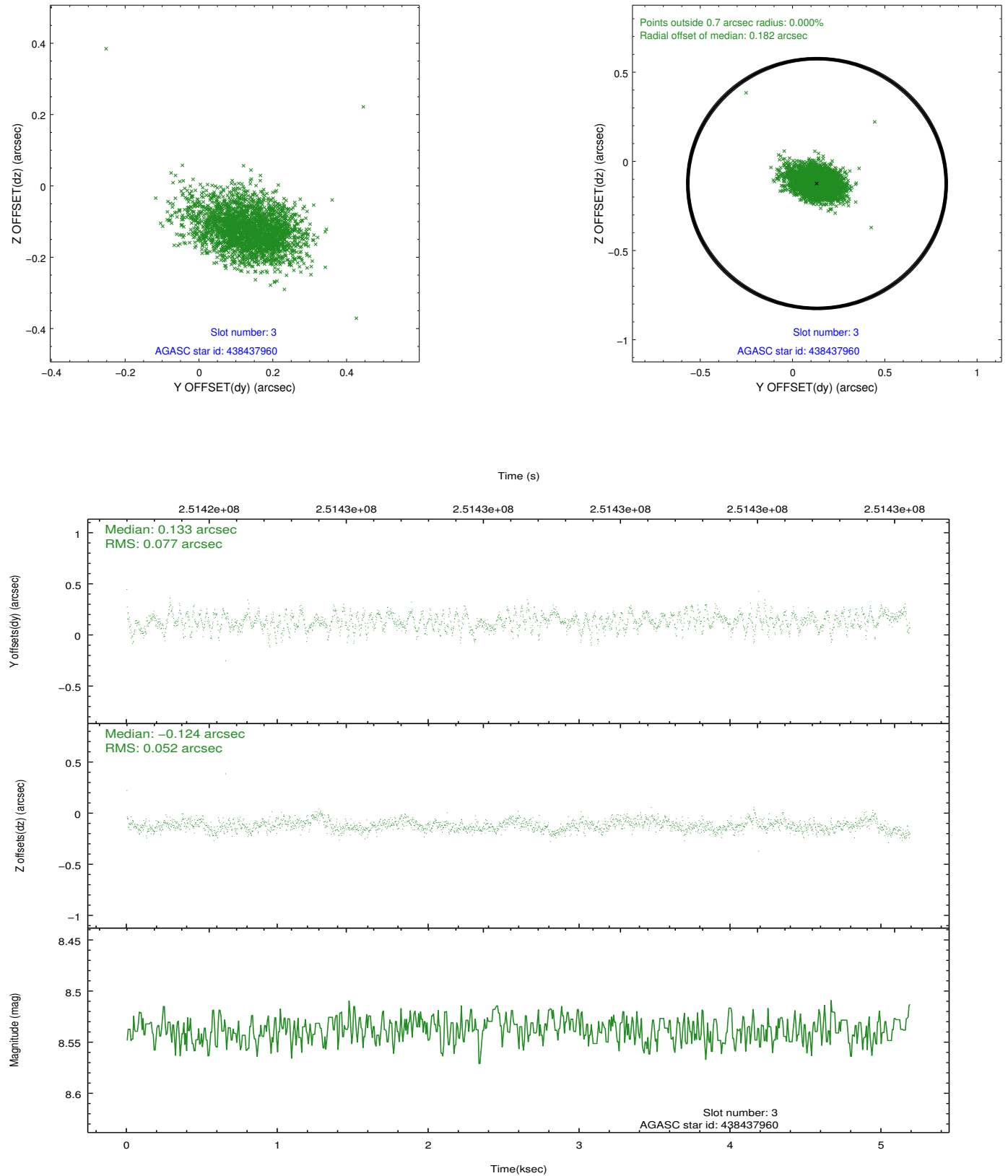


### Slot Statistics

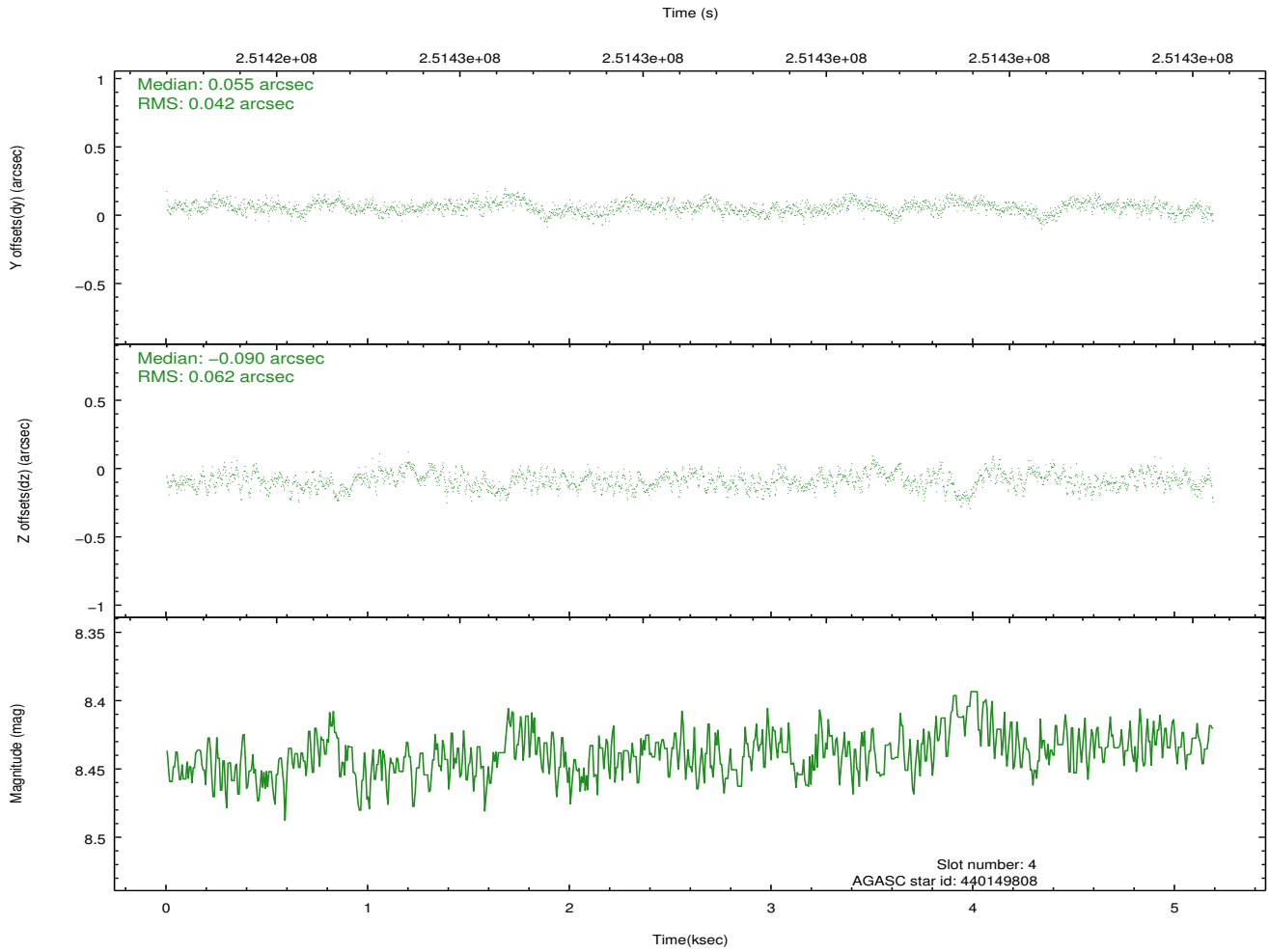
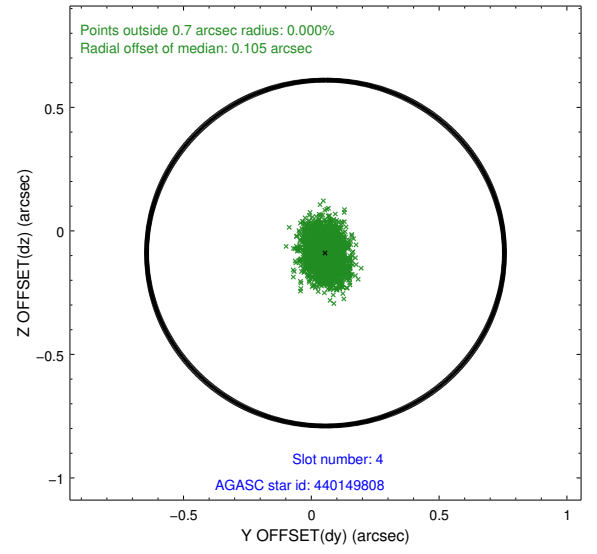
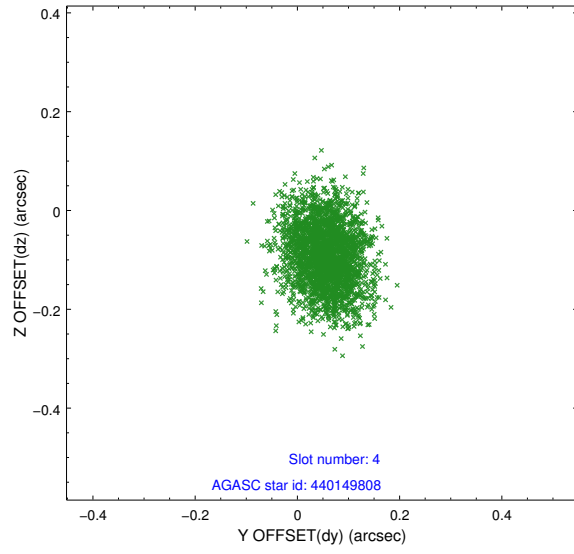
slot	status	id	mag	n_pts	med_dy	med_dz	dr1	dr2	ra	dec	mean_y	mean_z
0	FID	HRC-I-1	6.92	1266	0.232	-0.828	0.007	0.012	0.000000	0.000000	-763.78	-1729.05
1	FID	HRC-I-2	7.03	1266	-0.180	0.165	0.008	0.013	0.000000	0.000000	848.87	-1731.63
2	FID	HRC-I-3	7.11	1266	0.066	0.568	0.007	0.013	0.000000	0.000000	-1191.28	574.40
3	GUIDE	438437960	8.54	2531	0.133	-0.124	0.096	0.163	78.069023	46.438843	2074.25	-2405.08
4	GUIDE	440149808	8.44	2531	0.055	-0.090	0.080	0.130	78.873930	46.405955	251.72	-1580.84
5	GUIDE	440150048	7.14	2532	0.001	-0.097	0.067	0.110	79.112838	46.416060	-317.03	-1406.18
6	GUIDE	438460832	8.99	2521	0.008	-0.019	0.094	0.145	78.414614	45.554782	2414.14	875.44
7	GUIDE	438441368	9.98	2529	-0.190	0.328	0.152	0.249	78.646413	46.420494	761.17	-1828.09

## 2.4 Star Slots

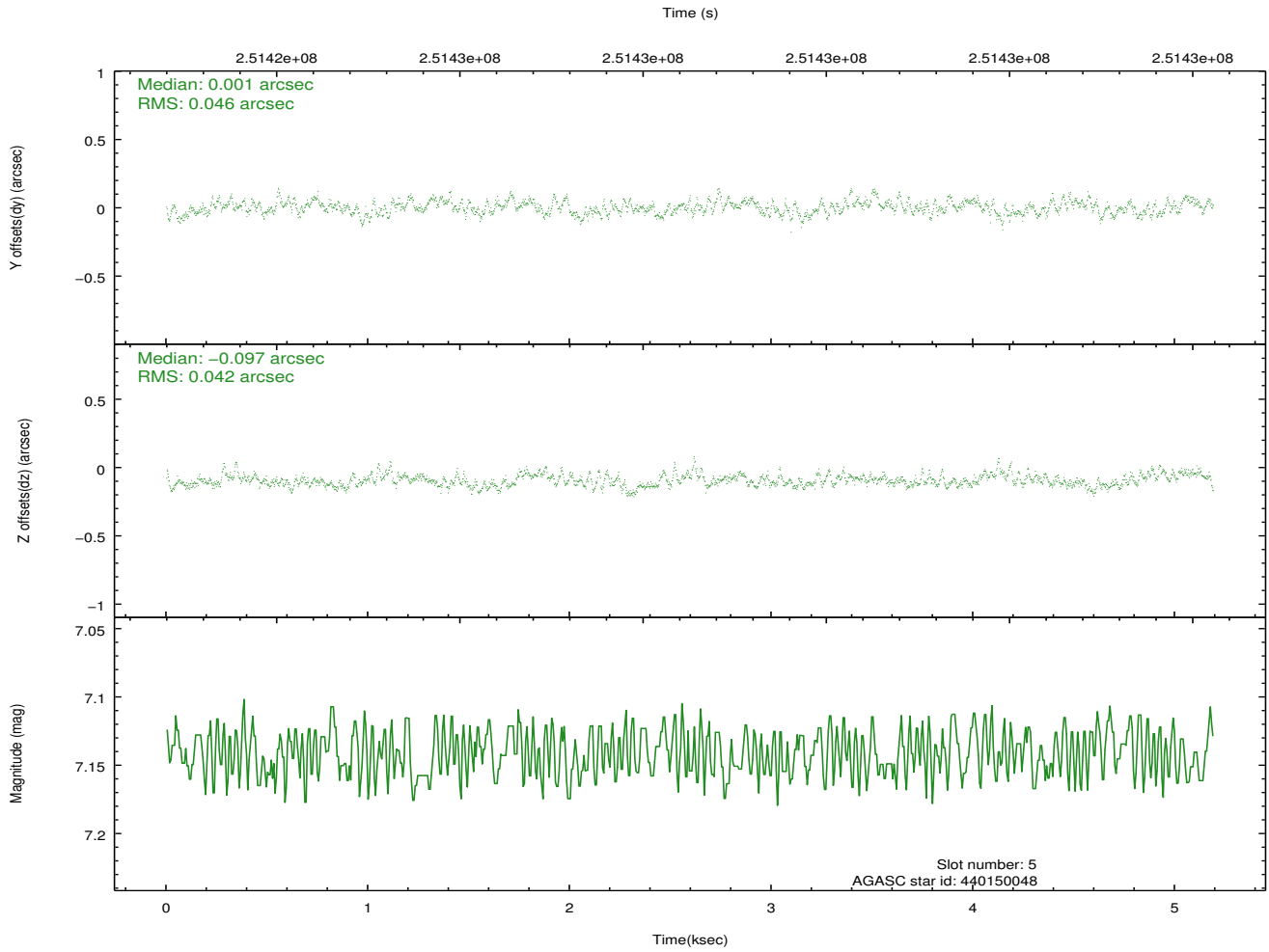
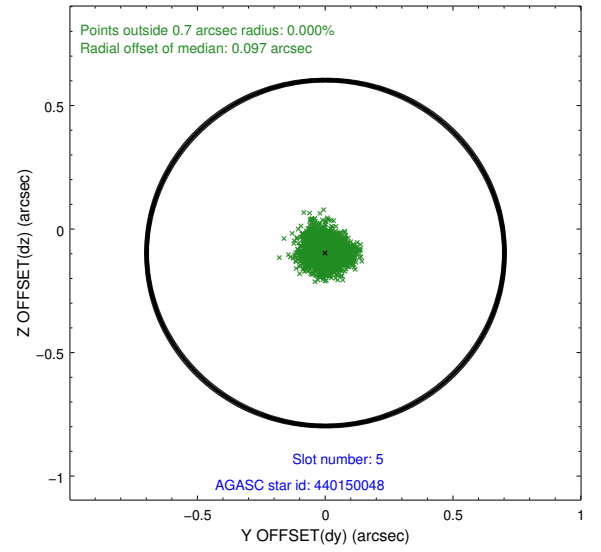
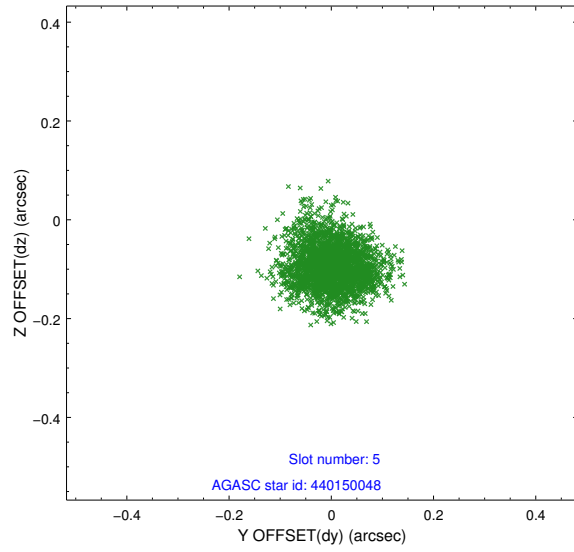
### 2.4.1 Slot 3



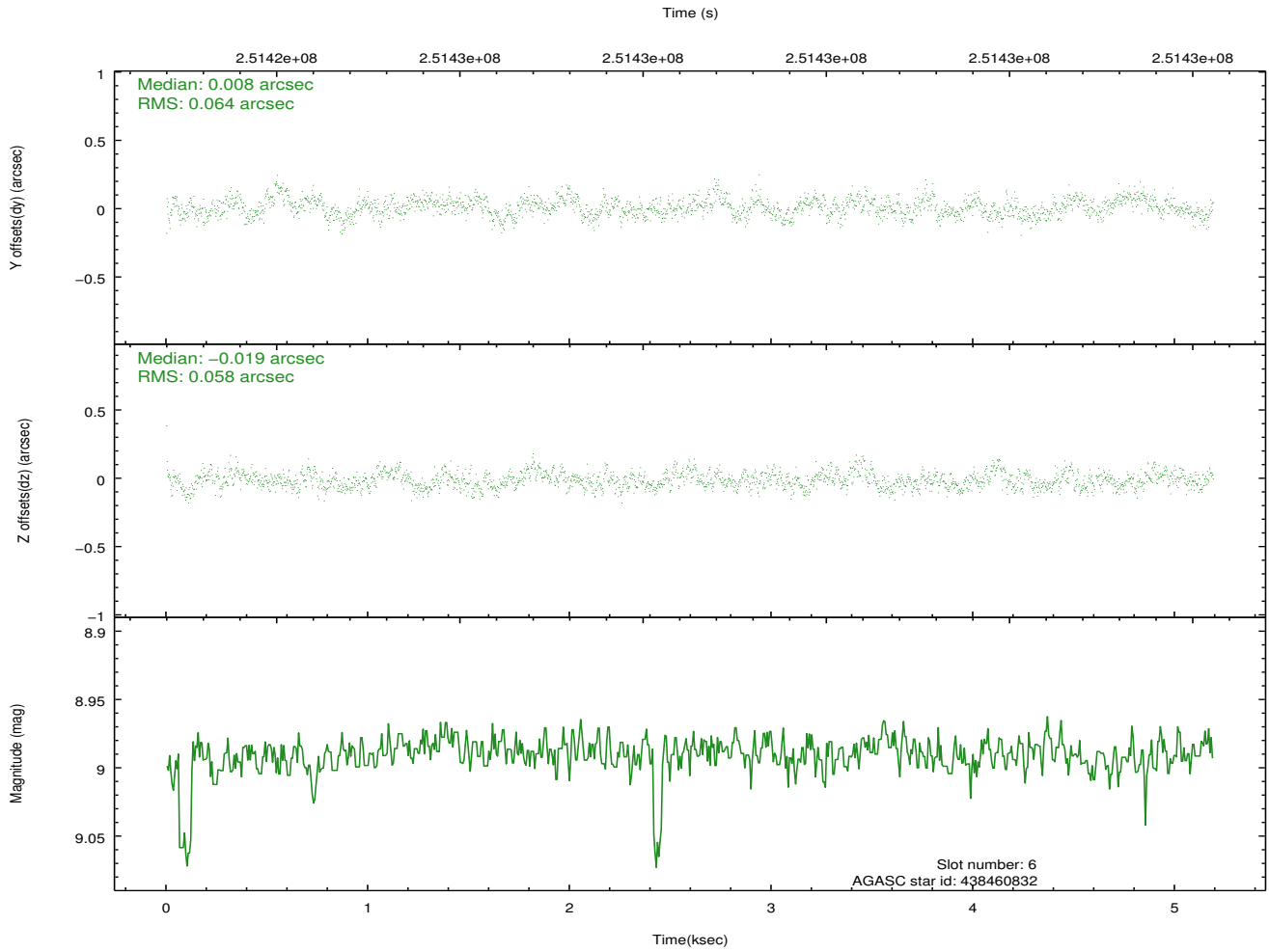
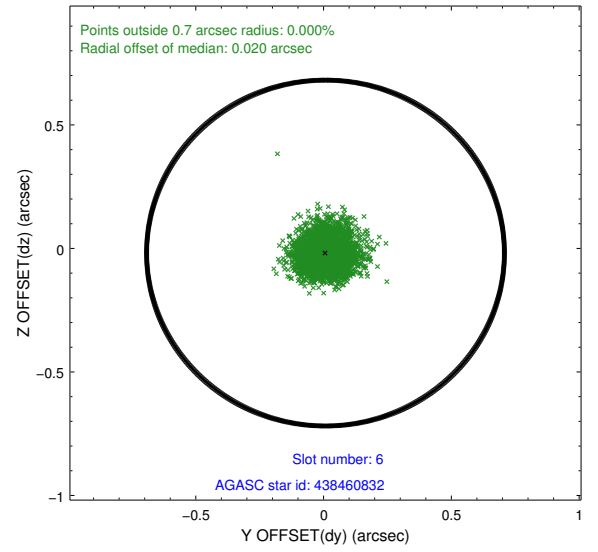
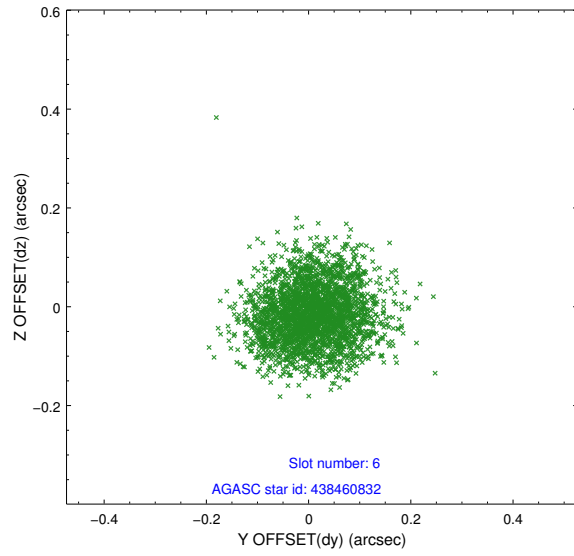
## 2.4.2 Slot 4



### 2.4.3 Slot 5

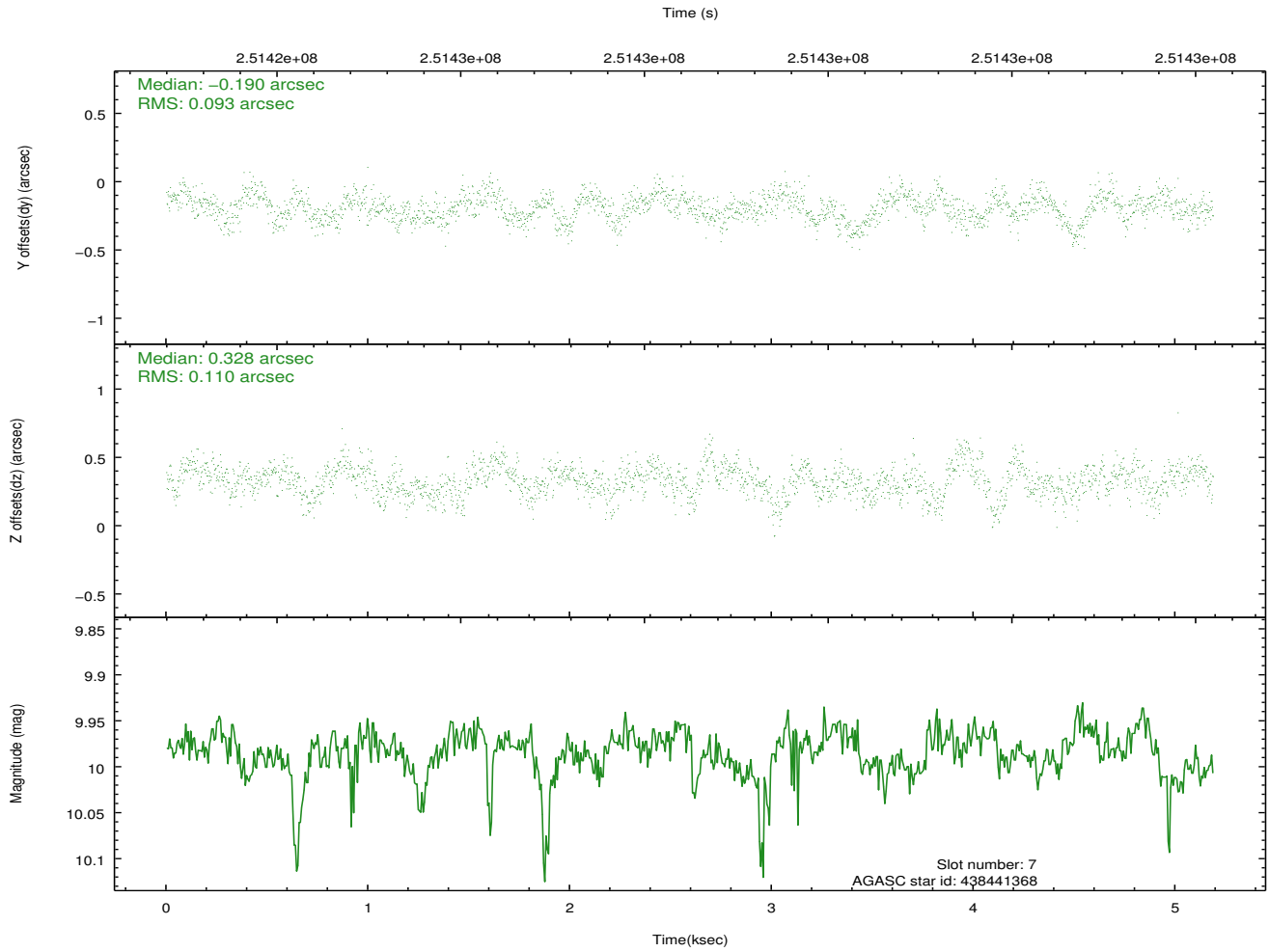
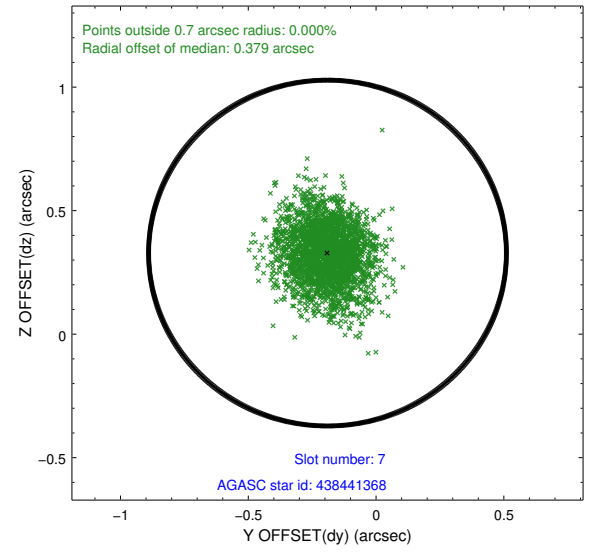
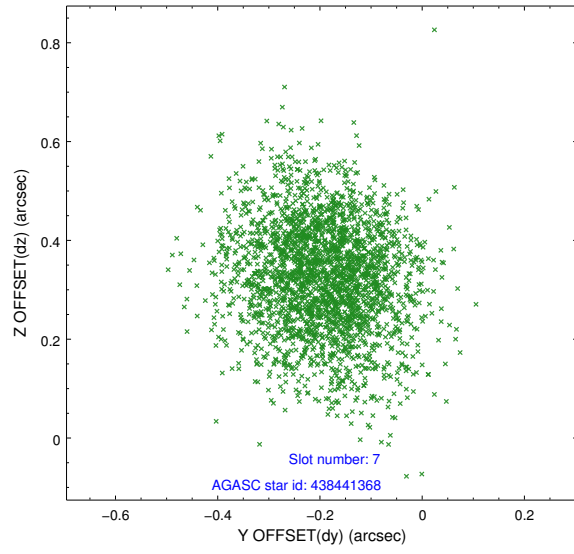


## 2.4.4 Slot 6



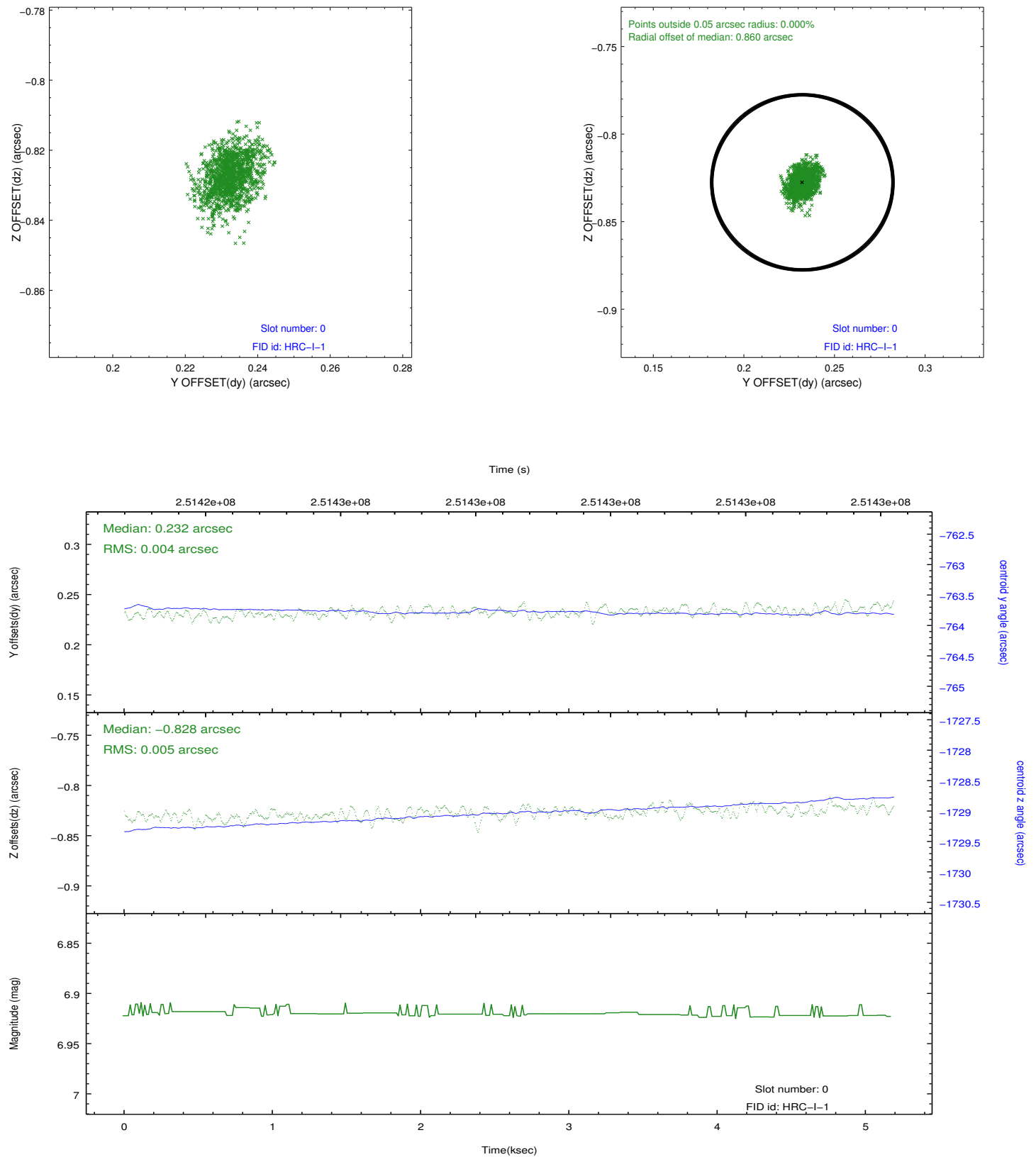


## 2.4.5 Slot 7

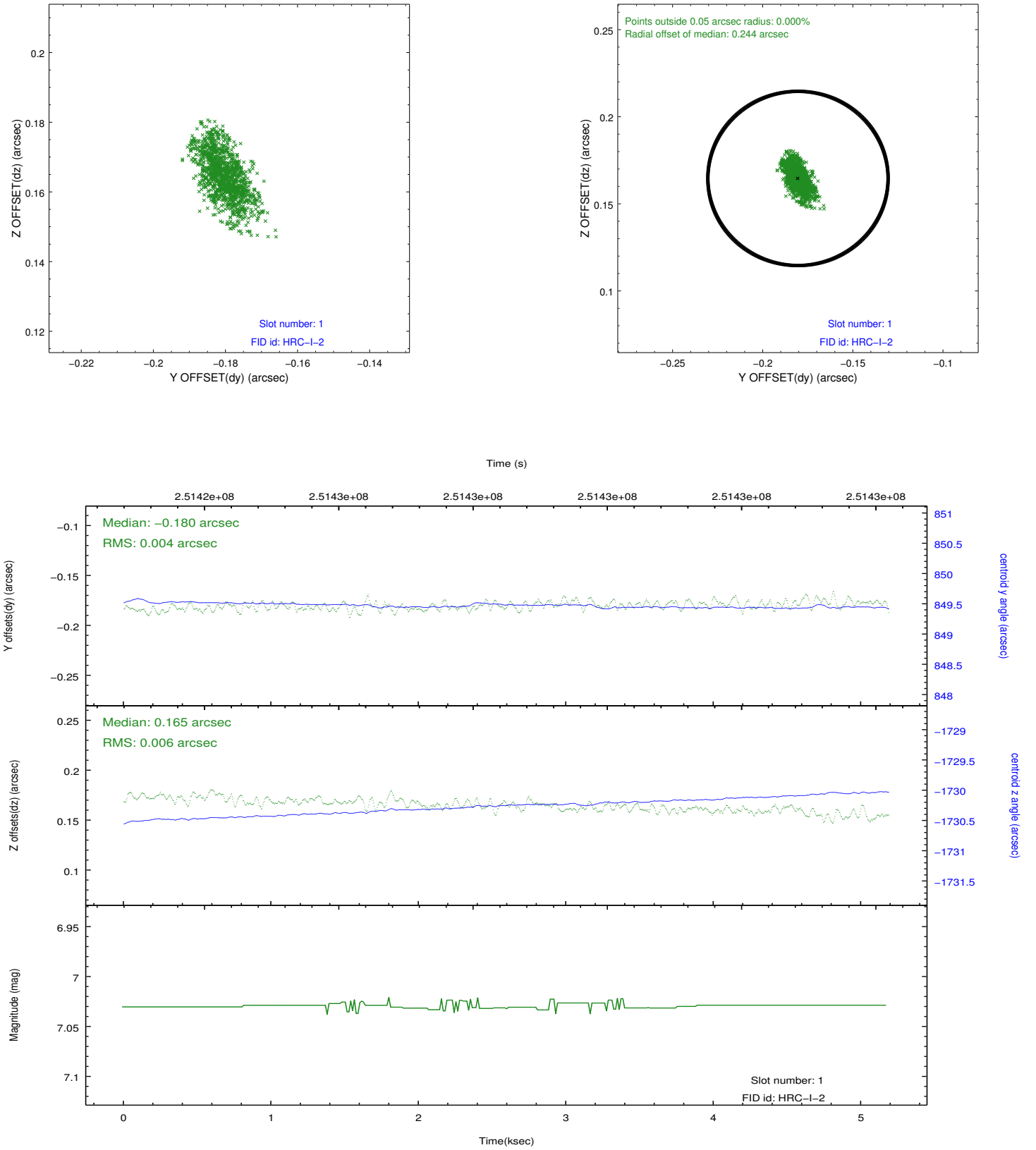


## 2.5 FID Slots

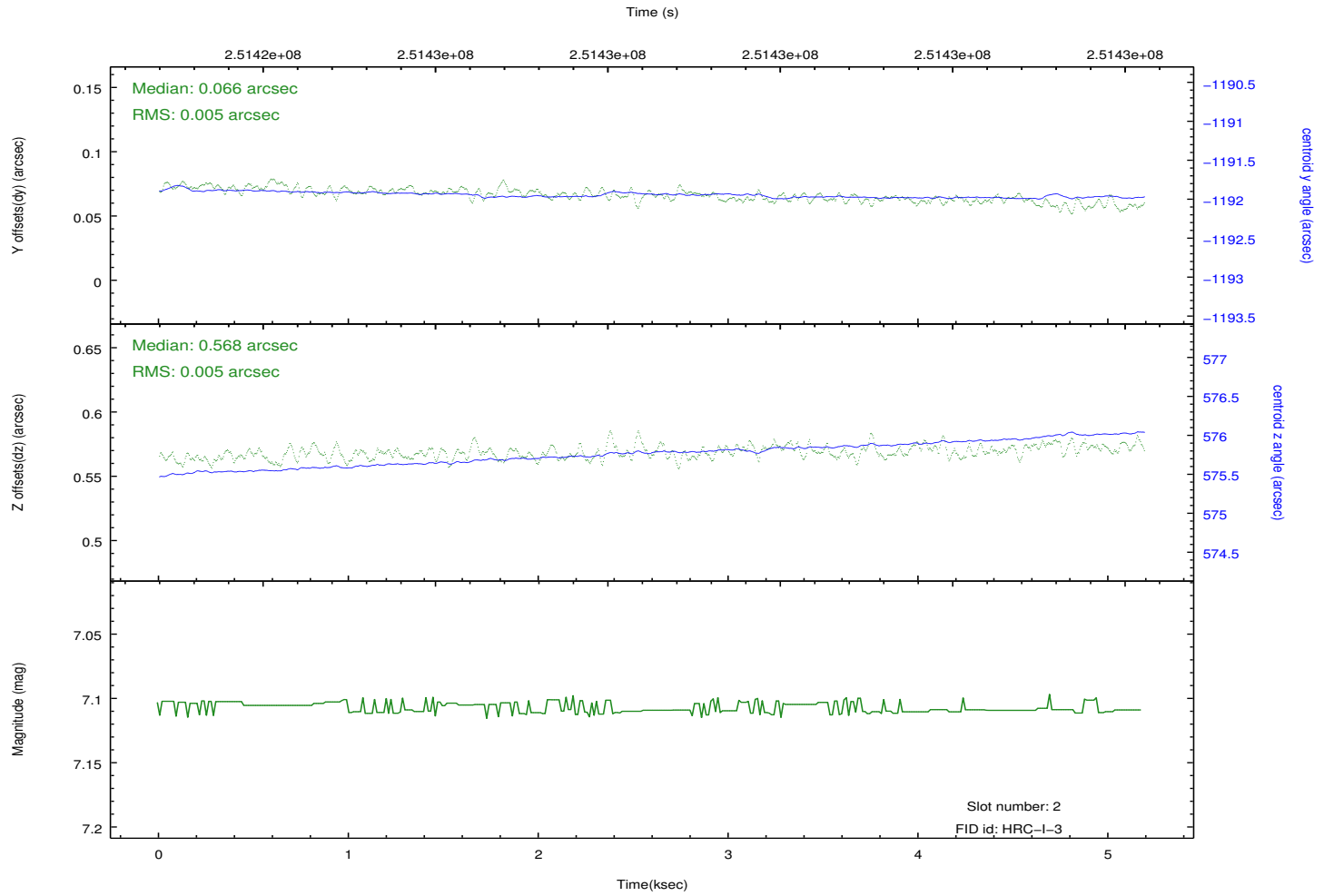
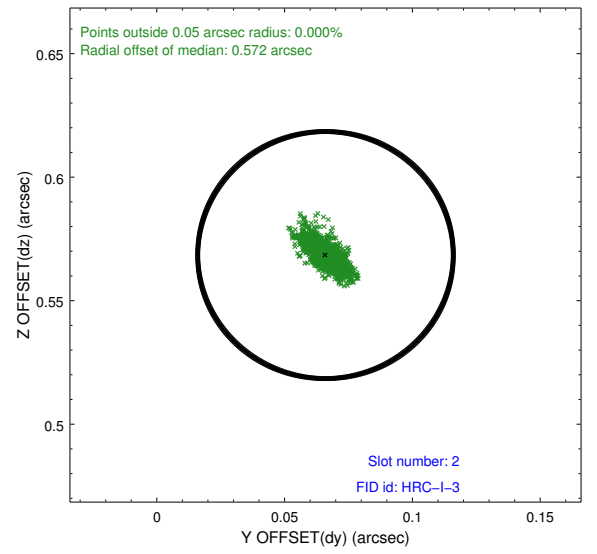
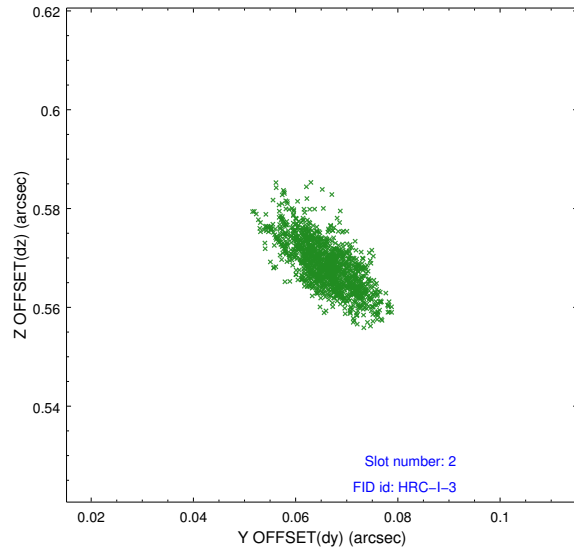
### 2.5.1 Slot 0



## 2.5.2 Slot 1



### 2.5.3 Slot 2



# A Summary

## A.1 Status

V&V Scientist	Jen Lauer
V&V Date (YYYY-MM-DD)	2012.08.12
V&V Edition	1
V&V Disposition and Status	OK
V&V Charge Time	5.187781

## A.2 Comments

Large fid offsets expected due to large SIM offset. This observation was performed with a large SIM offset, per PI request. As a result, the fid light positions are offset beyond normally expected ranges, but the fid light position correction has compensated for this offset.