

# V&V Reference Report

## L2 ASCDS Version : 7.6.7.1

Observation 6078 - L2 Version 002  
Chandra X-Ray Center

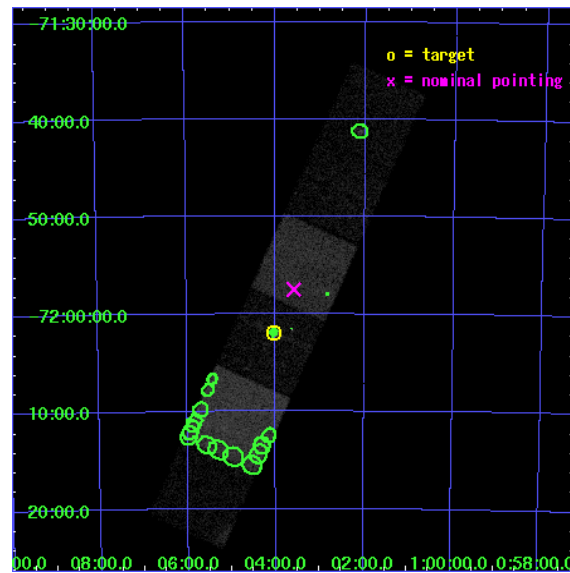
L2 Processing Date : Apr 7 2006

## Contents

<b>1</b>	<b>Front</b>	<b>2</b>
<b>2</b>	<b>OBI</b>	<b>3</b>
2.1	OBI . . . . .	3
2.1.1	Images . . . . .	3
2.1.2	Bias . . . . .	3
2.1.3	Parameters . . . . .	4
2.1.4	Events . . . . .	4
2.2	Compared Parameters . . . . .	5
2.3	Aspect . . . . .	6
2.4	Star Slots . . . . .	9
2.4.1	Slot 3 . . . . .	9
2.4.2	Slot 4 . . . . .	10
2.4.3	Slot 5 . . . . .	11
2.4.4	Slot 6 . . . . .	12
2.4.5	Slot 7 . . . . .	13
2.5	FID Slots . . . . .	14
2.5.1	Slot 0 . . . . .	14
2.5.2	Slot 1 . . . . .	15
2.5.3	Slot 2 . . . . .	16
<b>3</b>	<b>Point Sources</b>	<b>17</b>
<b>A</b>	<b>Summary</b>	<b>18</b>
A.1	Status . . . . .	18
A.2	Comments . . . . .	18

# 1 Front

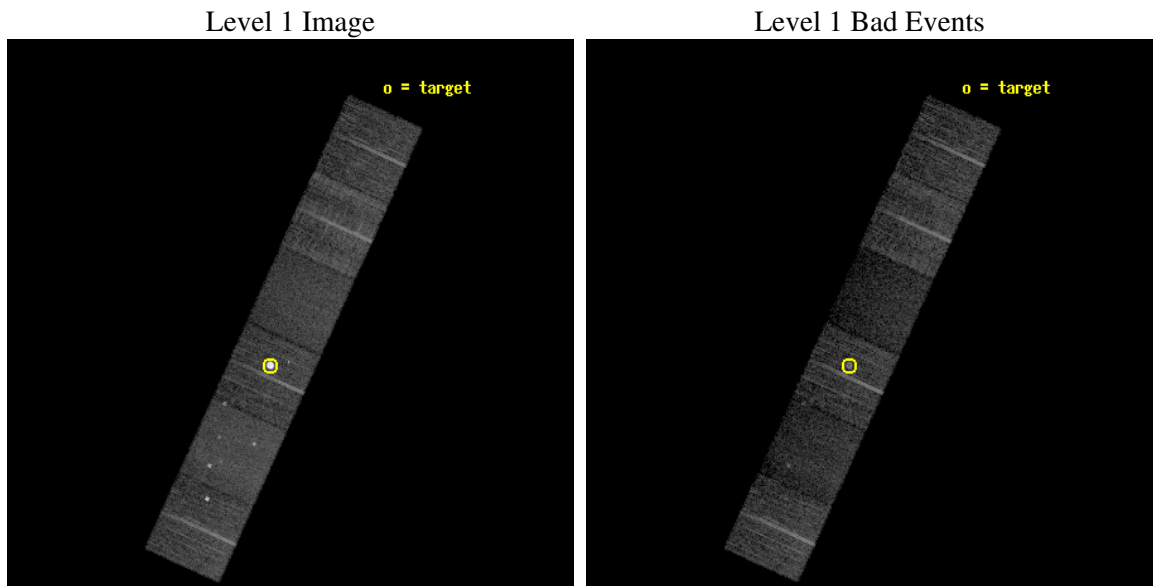
seq_num	590405
obs_id	6078
title	AO6A ACIS-S Calibration Observations of E0102-72
observer	Dr. CXC Calibration
object	E0102-72[S2,-120,5.15,0,0]
dtcycle	0
cycle	P
ra_targ	16.01
dec_targ	-72.032028
ra_nom	15.89600023226
dec_nom	-71.958108640549
roll_nom	294.41686073139
revision	2
ontime	7756.7999711037
livetime	7658.5786992854
ontime4	7756.7999711037
ontime5	7756.7999711037
ontime6	7756.7999711037
ontime7	7756.7999711037
ontime8	7753.5590007901
ontime9	7756.7999711037
l2events	92457



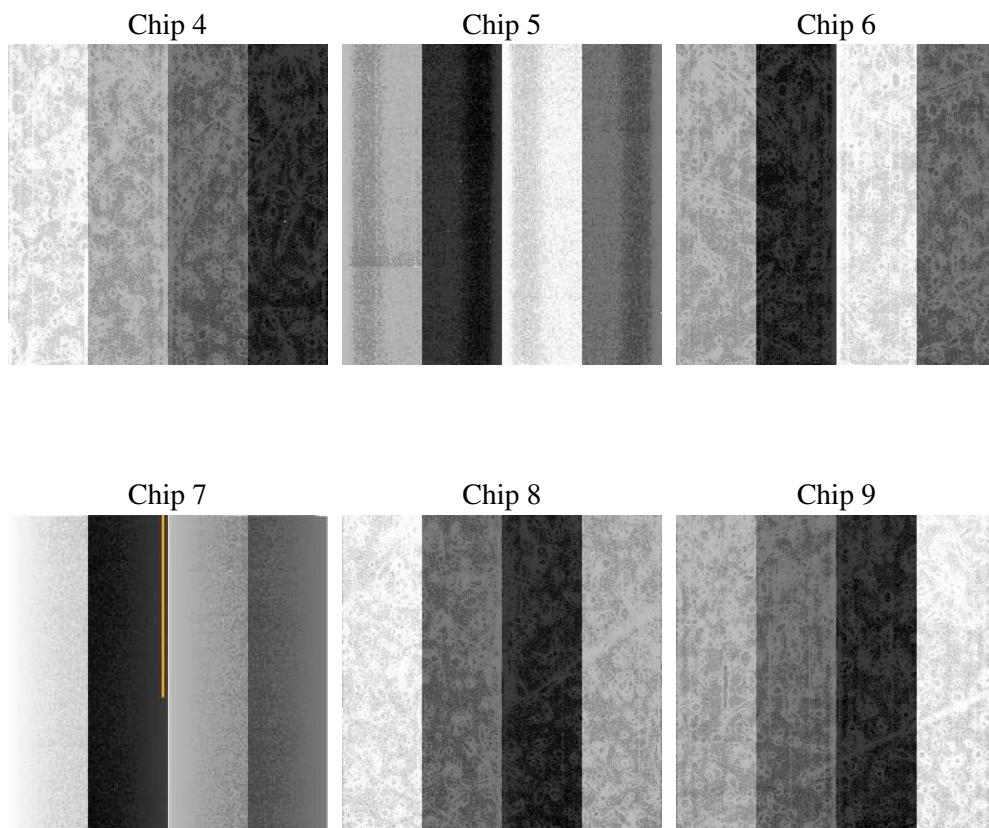
## 2 OBI

### 2.1 OBI

#### 2.1.1 Images



#### 2.1.2 Bias



### 2.1.3 Parameters

obi_num	1
ascdsver	7.6.7.1
caldsver	3.2.1
date	2006-04-07T07:47:30
revision	2

sched_exp_time	8000.000000
ontime	7762.1991998255
ontime4	7762.1991998255
ontime5	7762.1991998255
ontime6	7762.1991998255
ontime7	7762.1992297173
ontime8	7758.958229512
ontime9	7762.1991998255
l1events	344531

### 2.1.4 Events

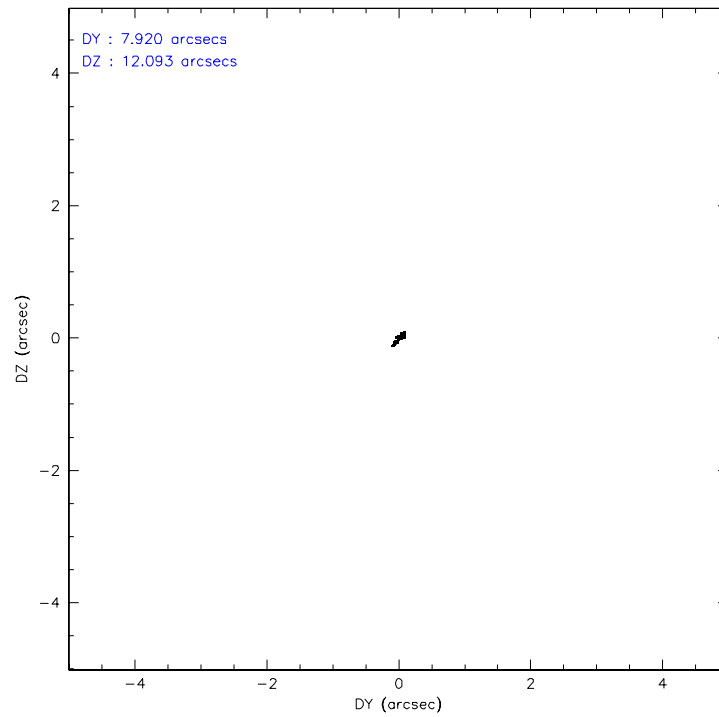
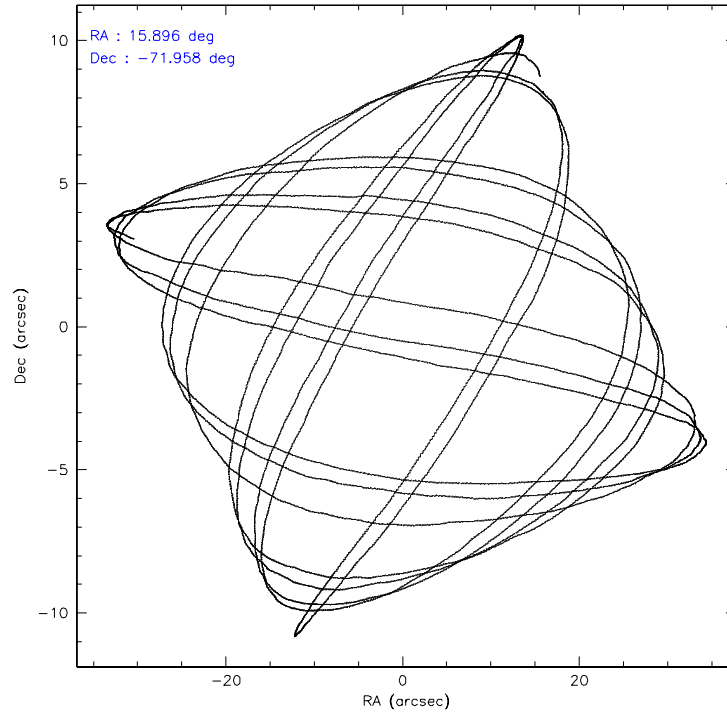
	ccd 4	ccd 5	ccd 6	ccd 7	ccd 8	ccd 9
level 1 events	57008	59465	76079	44322	61746	45911
rejected events	49543	28251	42807	23715	48429	41012
rejected %	86%	47%	56%	53%	78%	89%

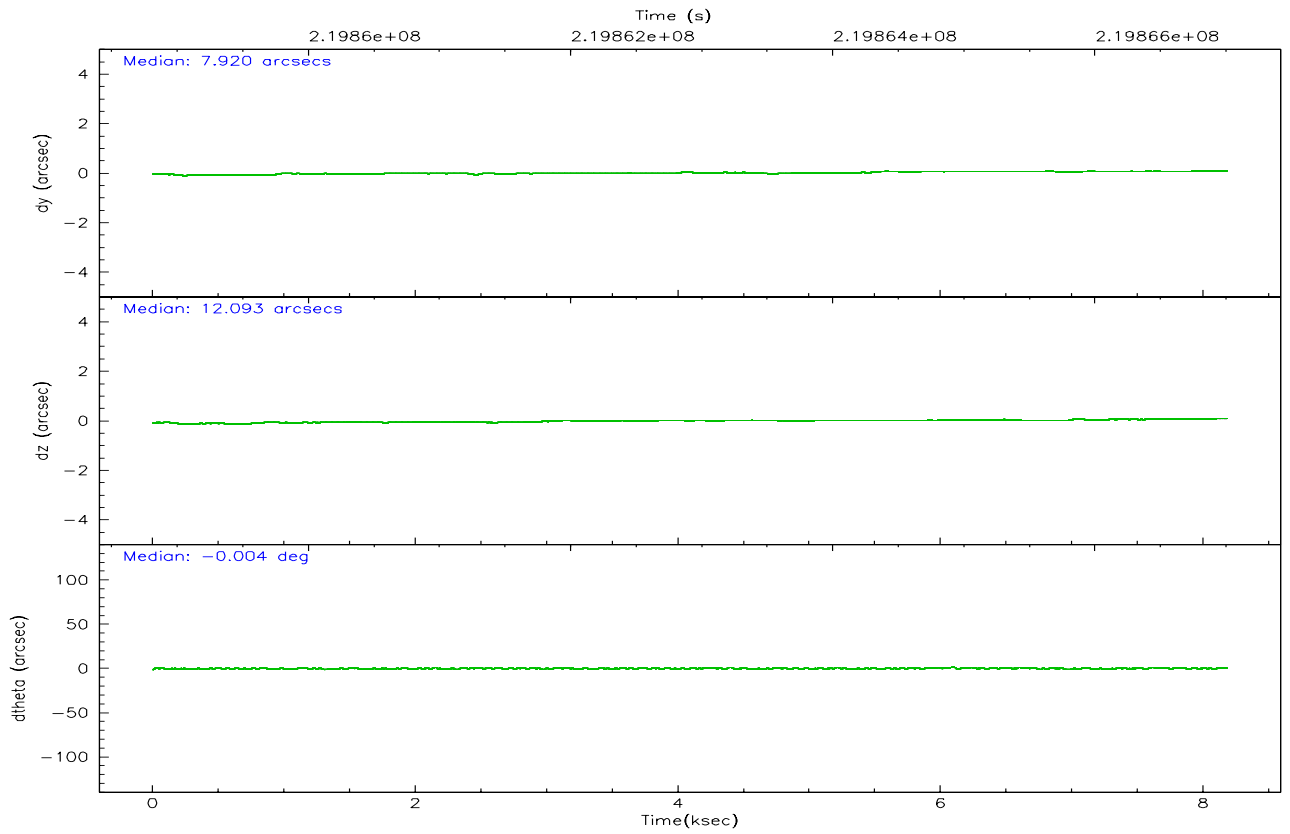
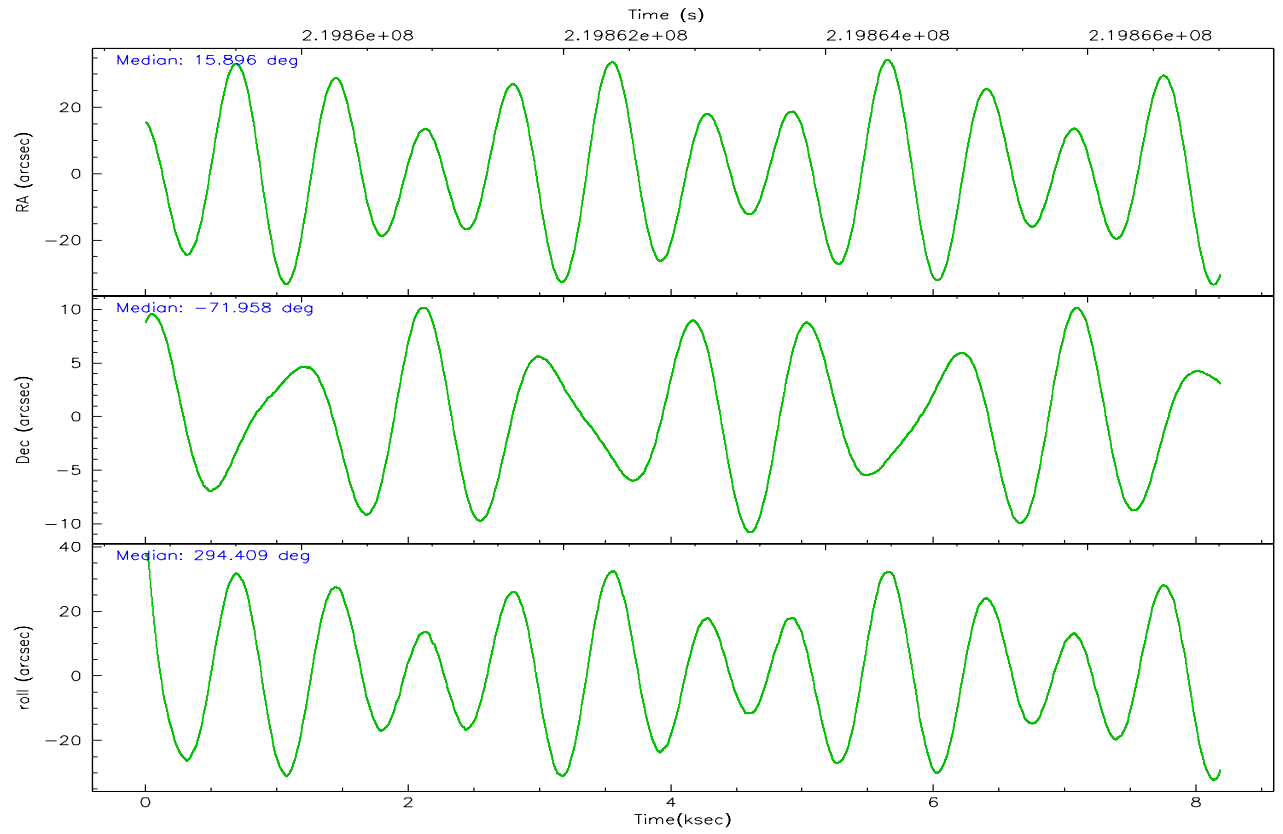
	ccd 4	ccd 5	ccd 6	ccd 7	ccd 8	ccd 9
grade 0 events	4362	3067	27012	1453	3623	1858
	7%	5%	35%	3%	5%	4%
grade 1 events	65	240	259	26	51	19
	0%	0%	0%	0%	0%	0%
grade 2 events	1150	10070	3058	5354	3078	1027
	2%	16%	4%	12%	4%	2%
grade 3 events	602	886	1008	1284	1510	555
	1%	1%	1%	2%	2%	1%
grade 4 events	557	980	1035	1225	1366	547
	0%	1%	1%	2%	2%	1%
grade 5 events	1627	3209	1704	3451	2395	1674
	2%	5%	2%	7%	3%	3%
grade 6 events	800	16237	1181	11302	3747	916
	1%	27%	1%	25%	6%	1%
grade 7 events	47845	24776	40822	20227	45976	39315
	83%	41%	53%	45%	74%	85%

## 2.2 Compared Parameters

Parameter	Planned	Actual	Parameter	Planned	Actual
Instrument	ACIS	ACIS	Obspar format version number	6	6
Detector	ACIS-456789	ACIS-456789	Obspar file type	PREDICTED	ACTUAL
Grating	NONE	NONE	Obspar update status	NONE	UPDATED
Data mode	VFAINT	VFAINT	On-chip summing requested	N	N
Observation mode	POINTING	POINTING	Subarray requested	NONE	NONE
Pointing RA	15.823951	15.89600023225977	Alternating exposures requested	N	N
Pointing Dec	-71.942600	-71.95810864054873	Primary exposure time	0.000000	3.2
Pointing Roll	294.191728	294.416860731386			
Window start time	215654464.184000	215654464.184000			
Window stop time	220838464.184000	220838464.184000			
SIM focus pos (mm)	-0.684267	-0.6828225247311905			
SIM defocus (mm)	0	0.001444936568705701			
SIM translation stage pos (mm)	-190.132523	-190.1400660498719			
SIM translation stage offset (mm)	0	0.00754346686406393			
Observation start time	219859000.184000	219858624.77647			
Observation start date	2004-12-19T15:55:36	2004-12-19T15:50:24			
Observation end time	219867000.184000	219867731.38938			
Observation end date	2004-12-19T18:08:56	2004-12-19T18:22:11			
Read mode	TIMED	TIMED			

## 2.3 Aspect





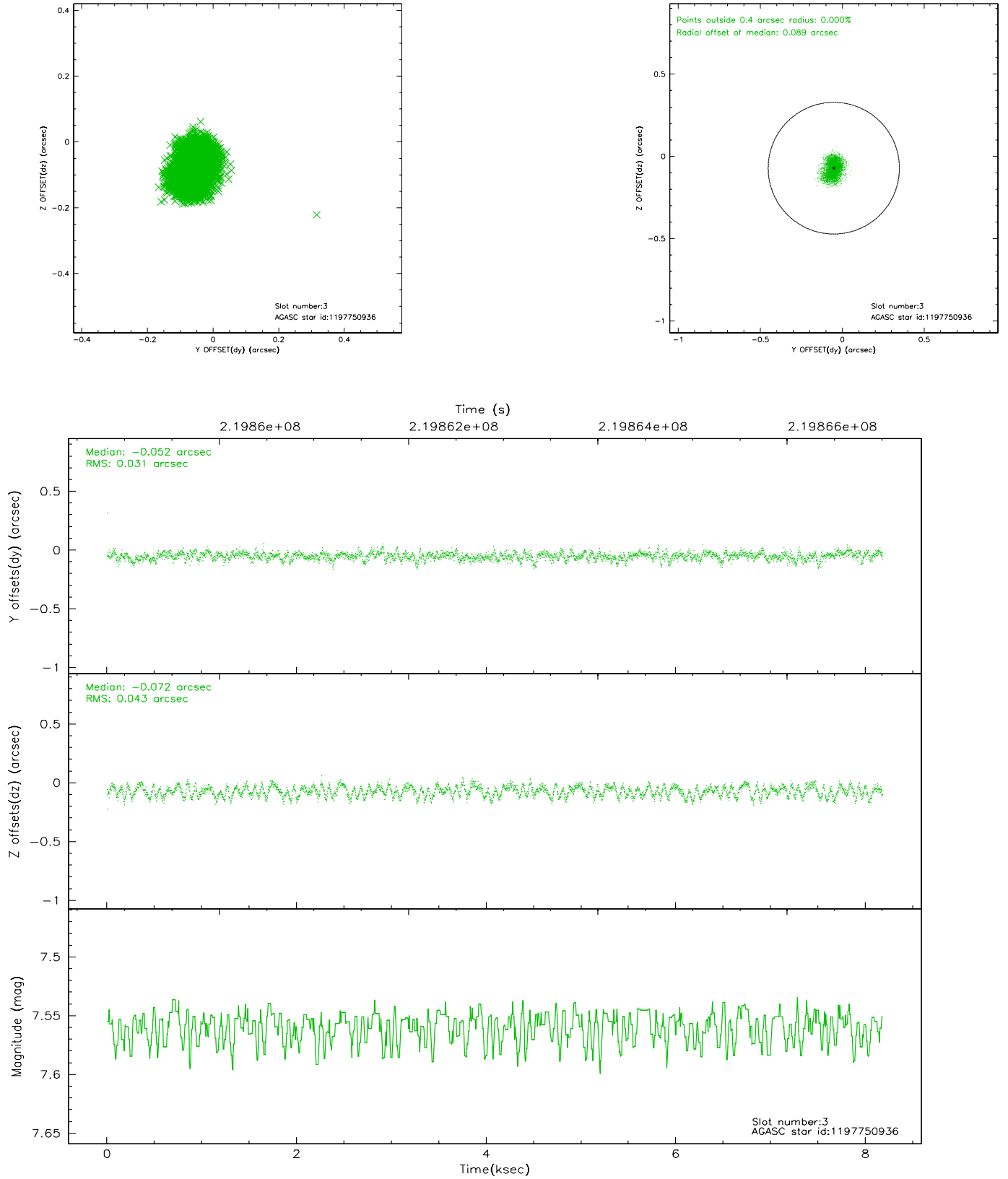
### Slot Statistics

slot	status	id	mag	n_pts	med_dy	med_dz	dr1	dr2	ra	dec	mean_y	mean_z
0	FID	ACIS-S-1	7.18	1996	0.052	-0.055	0.006	0.010	0.000000	0.000000	935.35	-1729.09
1	FID	ACIS-S-5	7.23	1995	-0.046	0.046	0.006	0.011	0.000000	0.000000	-1813.33	167.92
2	FID	ACIS-S-6	7.34	1995	-0.027	0.022	0.007	0.011	0.000000	0.000000	400.13	812.58
3	GUIDE	1197750936	7.56	3992	-0.052	-0.072	0.057	0.090	15.387940	-71.549550	-1492.12	125.72
4	GUIDE	1197884536	8.50	3990	-0.023	0.085	0.059	0.094	17.160729	-71.835289	277.31	1520.10
5	GUIDE	1197884712	8.31	3992	0.101	0.071	0.055	0.089	16.087398	-72.252690	1137.94	-193.35
6	GUIDE	1197885328	7.25	3992	0.049	-0.029	0.046	0.074	16.283090	-71.733943	-470.49	780.06
7	GUIDE	1198189696	7.39	3991	-0.075	-0.053	0.051	0.084	15.223750	-72.697522	2219.17	-1700.74

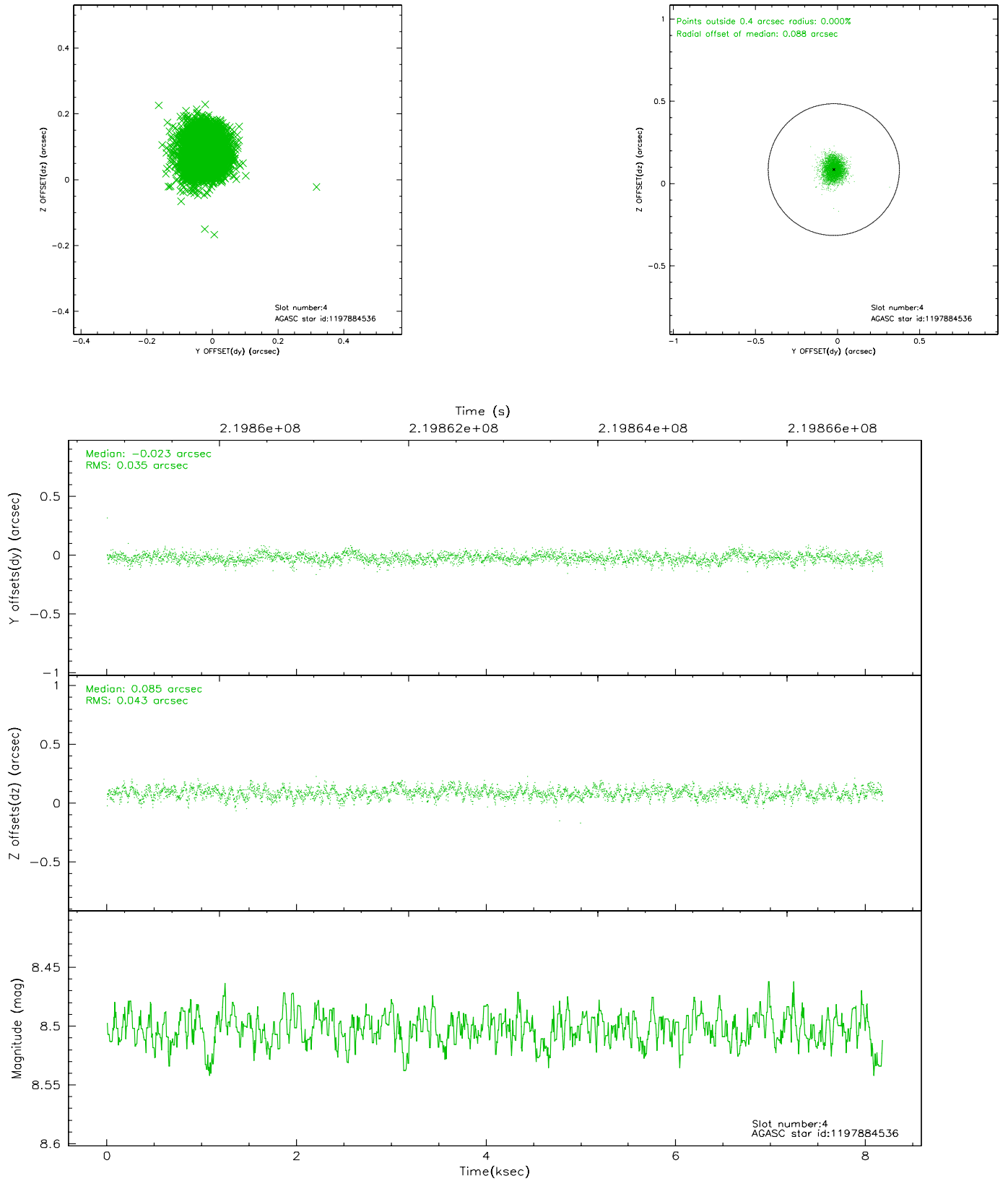


## 2.4 Star Slots

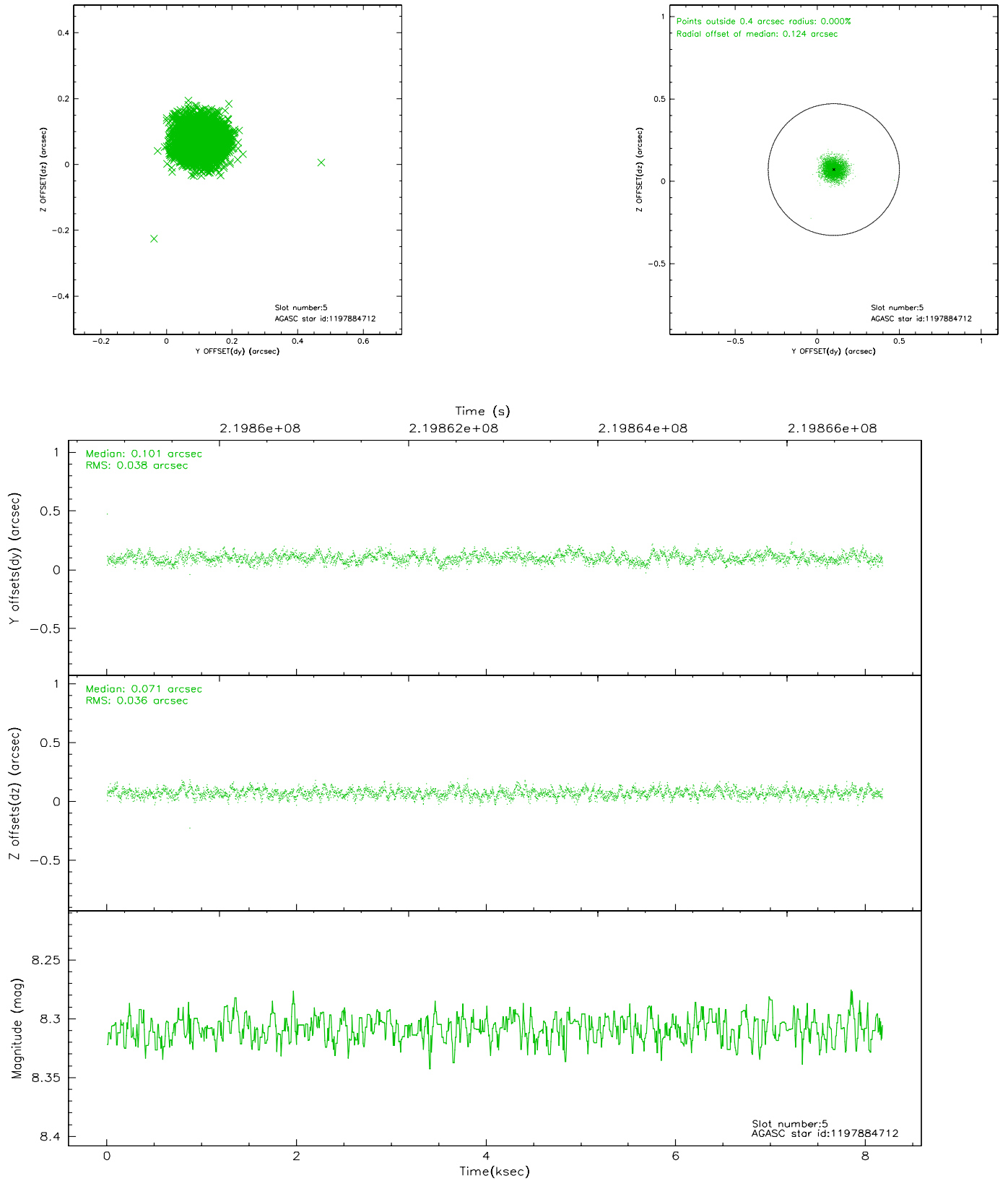
### 2.4.1 Slot 3



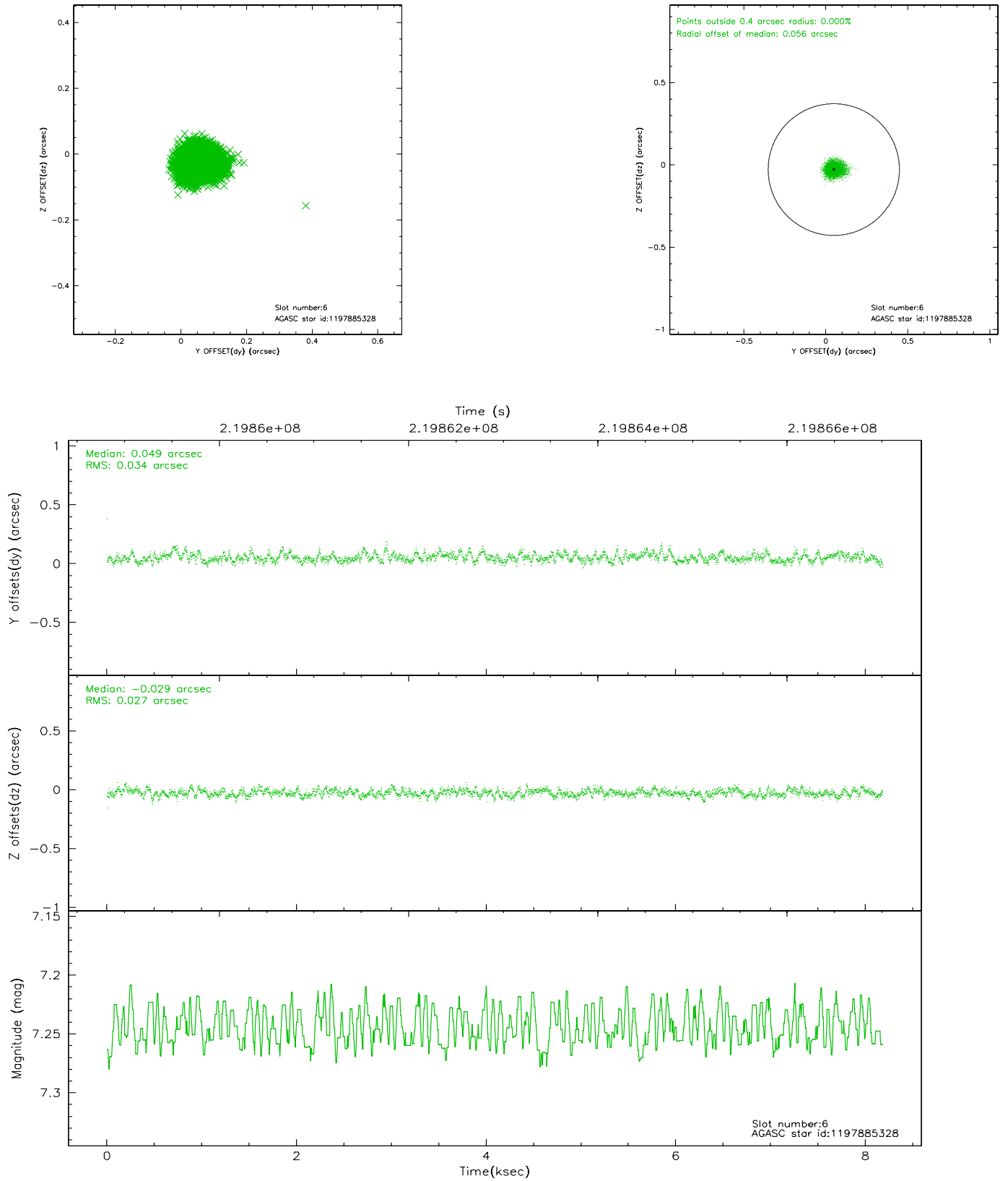
## 2.4.2 Slot 4



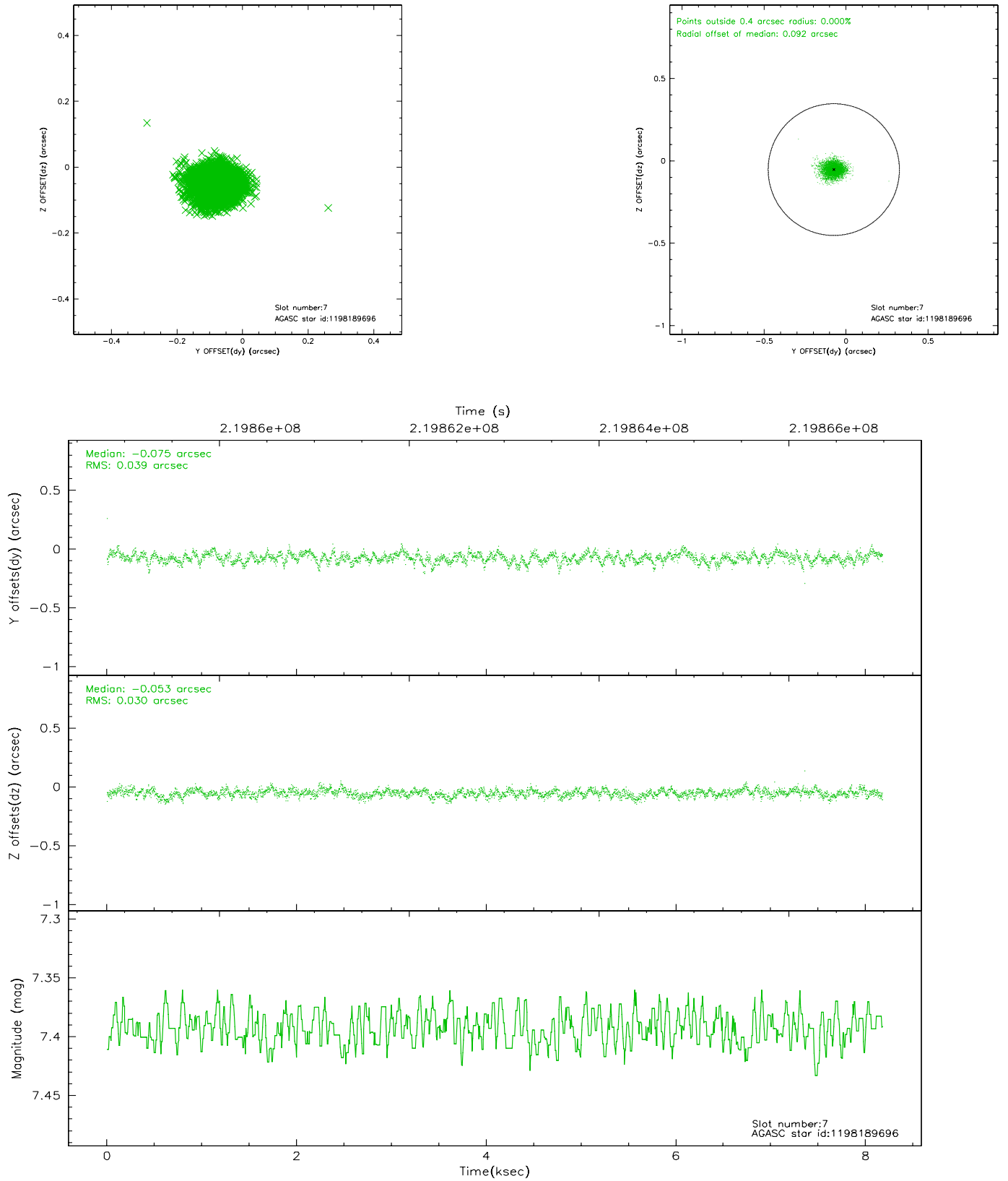
### 2.4.3 Slot 5



## 2.4.4 Slot 6

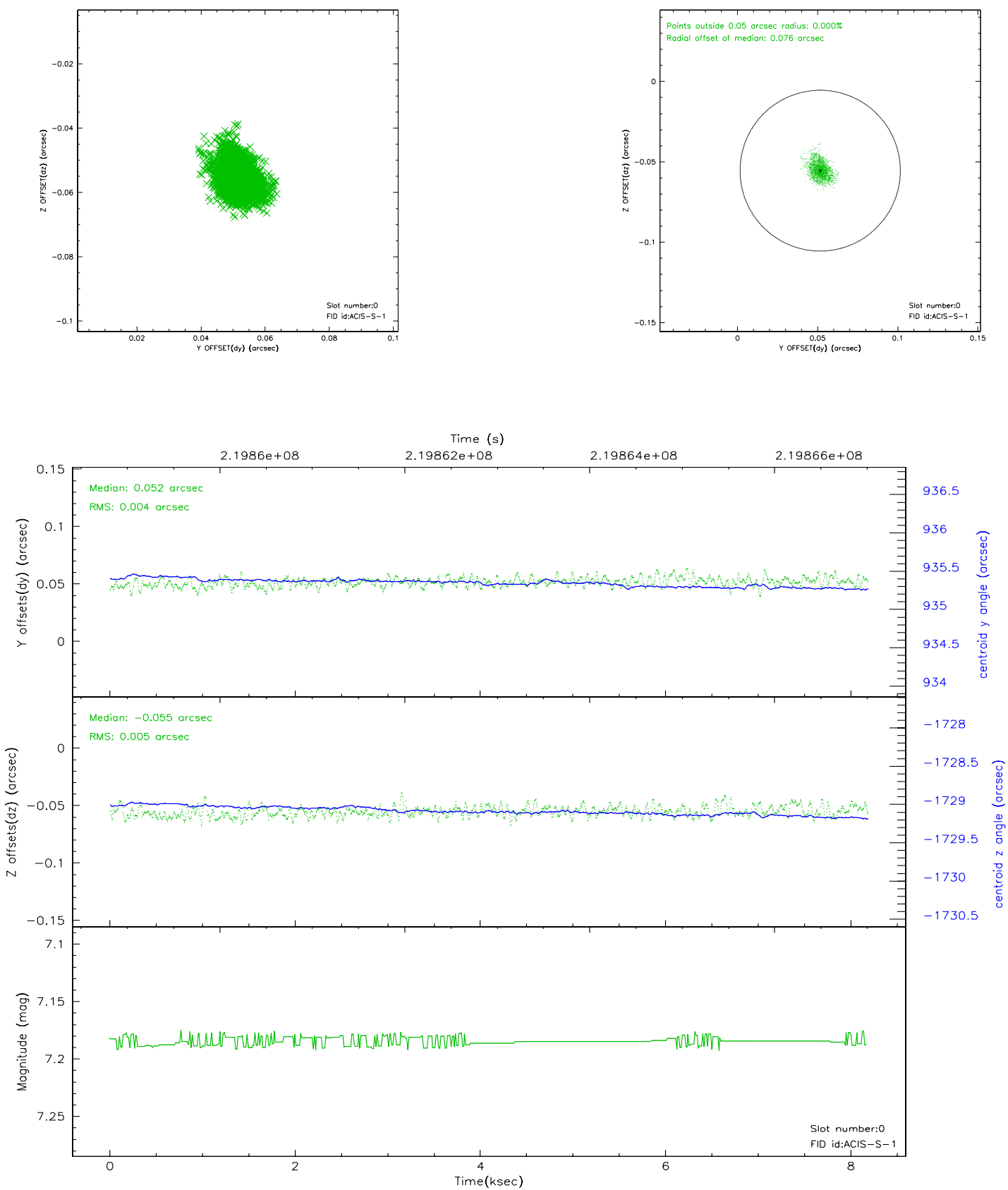


## 2.4.5 Slot 7

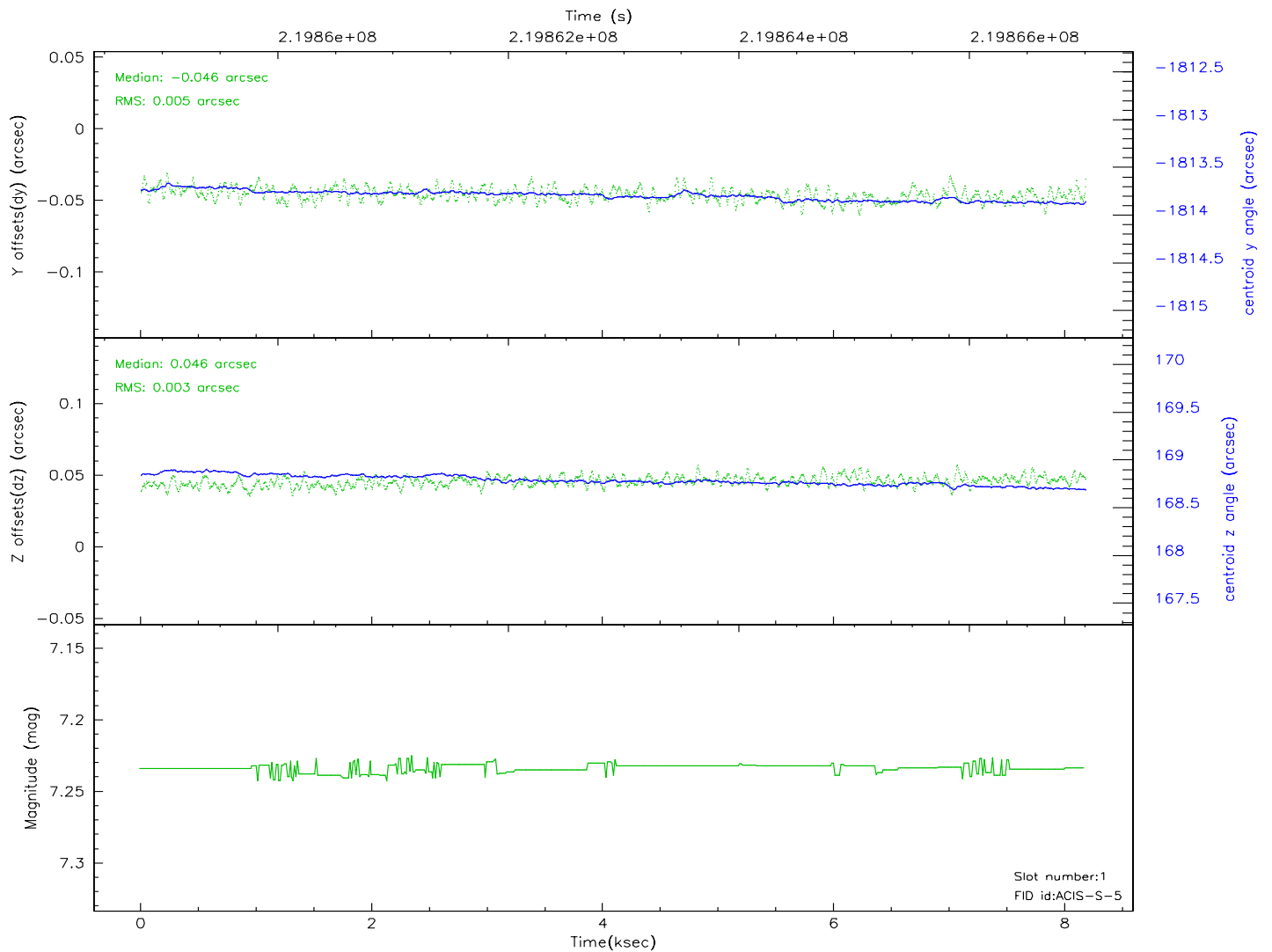
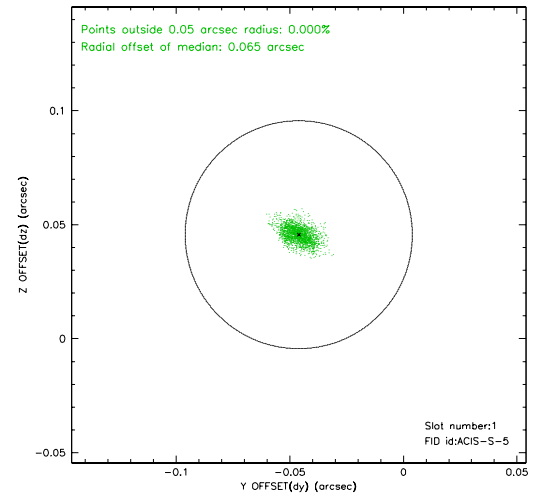
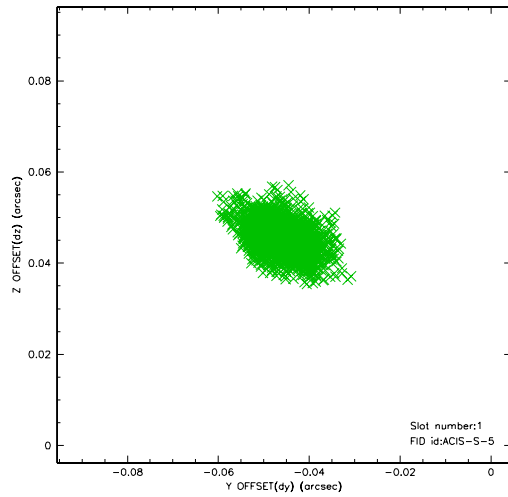


## 2.5 FID Slots

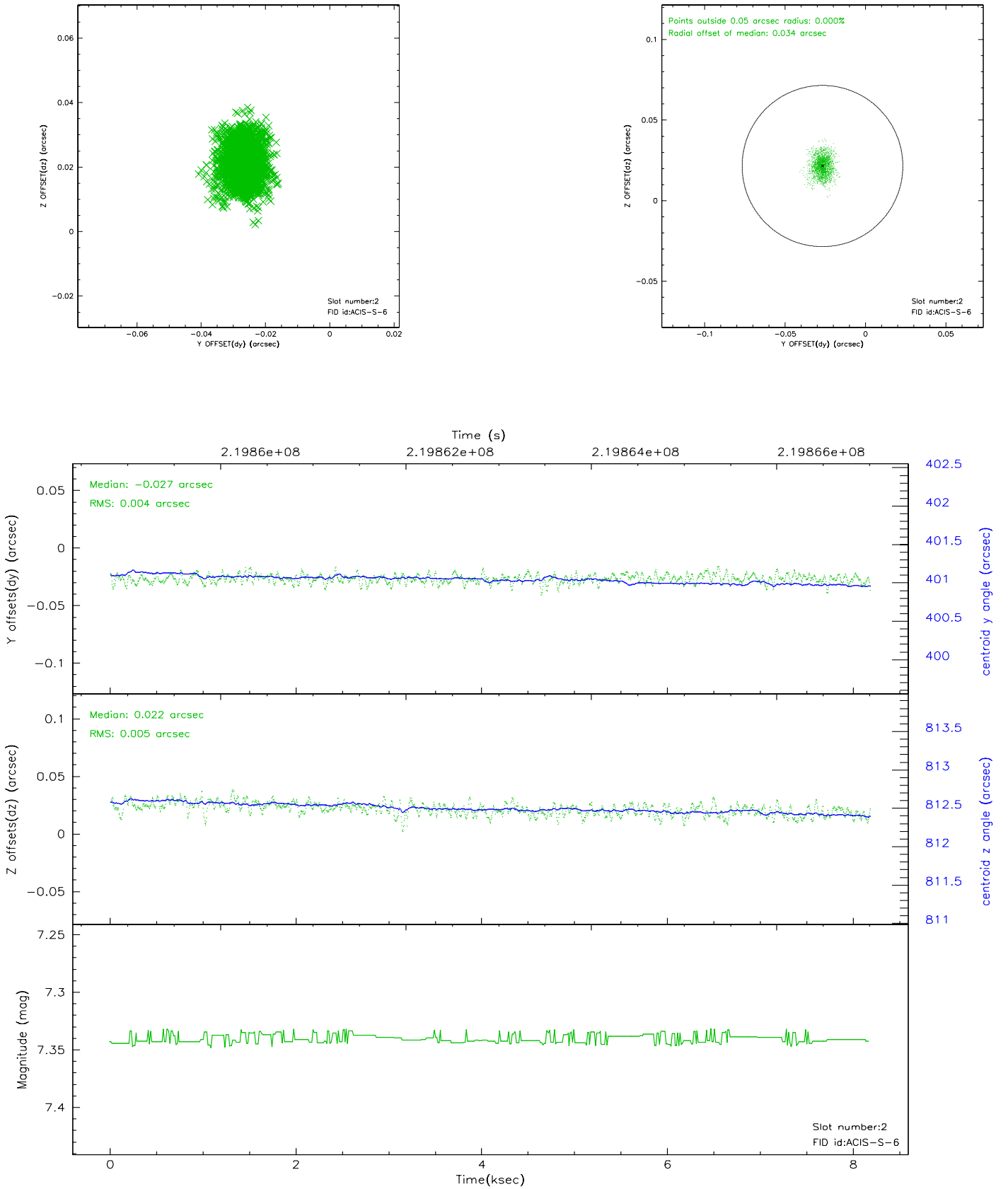
### 2.5.1 Slot 0



## 2.5.2 Slot 1

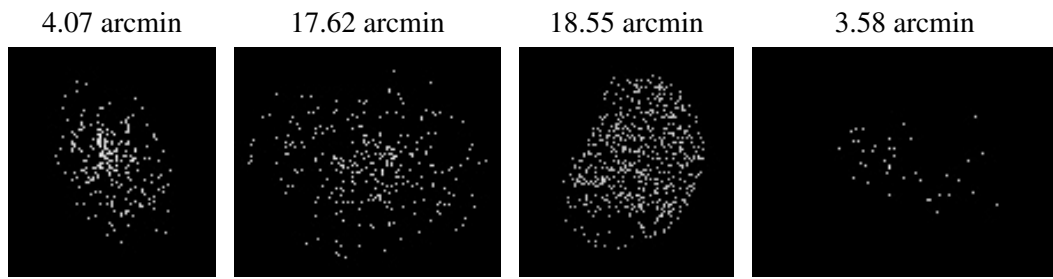


### 2.5.3 Slot 2





### 3 Point Sources



## A Summary

### A.1 Status

V&V Scientist	Beth Sundheim
V&V Date (YYYY-MM-DD)	2006.04.07
V&V Edition	1
V&V Disposition and Status	OK
V&V Charge Time	7.756799

### A.2 Comments

Window constraint satisfied.