

V&V Reference Report

L2 ASCDS Version : 7.6.7.1

Observation 6077 - L2 Version 002
Chandra X-Ray Center

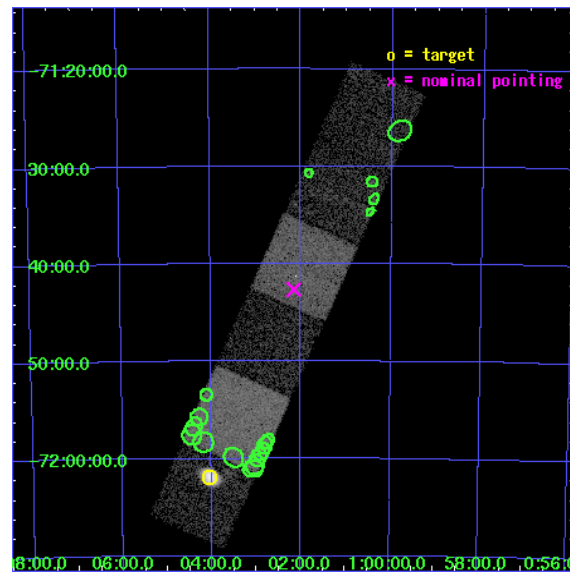
L2 Processing Date : Apr 7 2006

Contents

1	Front	2
2	OBI	3
2.1	OBI	3
2.1.1	Images	3
2.1.2	Bias	3
2.1.3	Parameters	4
2.1.4	Events	4
2.2	Compared Parameters	5
2.3	Aspect	6
2.4	Star Slots	9
2.4.1	Slot 3	9
2.4.2	Slot 4	10
2.4.3	Slot 5	11
2.4.4	Slot 6	12
2.4.5	Slot 7	13
2.5	FID Slots	14
2.5.1	Slot 0	14
2.5.2	Slot 1	15
2.5.3	Slot 2	16
3	Point Sources	17
A	Summary	18
A.1	Status	18
A.2	Comments	18

1 Front

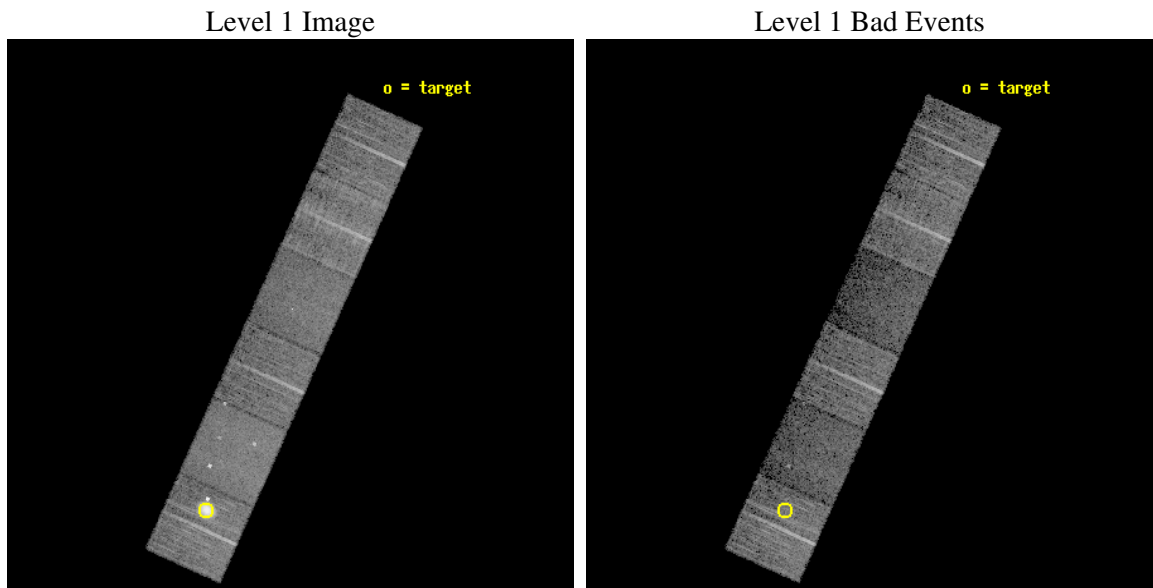
seq_num	590404
obs_id	6077
title	AO6A ACIS-S Calibration Observations of E0102-72
observer	Dr. CXC Calibration
object	E0102-72[S0,-120,21.44,0,0]
dtcycle	0
cycle	P
ra_targ	16.01
dec_targ	-72.032028
ra_nom	15.537452452008
dec_nom	-71.71079423033
roll_nom	294.25670041125
revision	2
ontime	7753.5999711156
livetime	7655.4192196239
ontime4	7753.5999711156
ontime5	7753.5999711156
ontime6	7753.5999711156
ontime7	7753.5999711156
ontime8	7750.3590008318
ontime9	7753.5999711156
l2events	79880



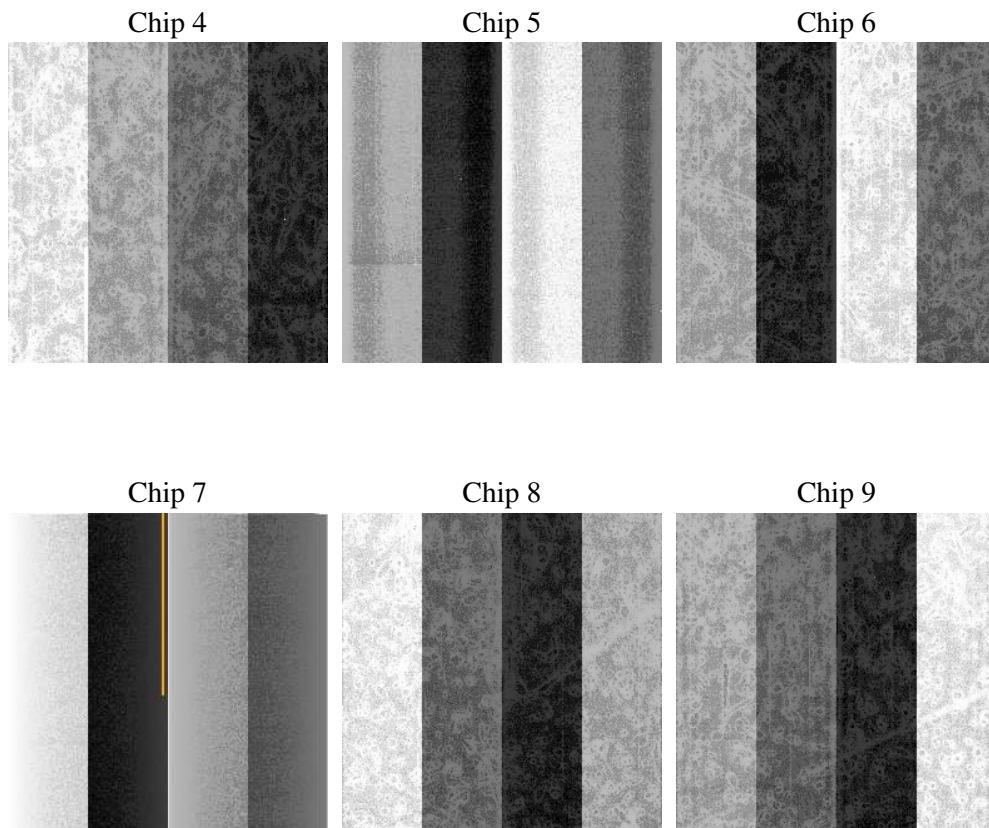
2 OBI

2.1 OBI

2.1.1 Images



2.1.2 Bias



2.1.3 Parameters

obi_num	1
ascdsver	7.6.7.1
caldbver	3.2.1
date	2006-04-07T07:38:13
revision	2

sched_exp_time	8000.000000
ontime	7758.958299607
ontime4	7758.958299607
ontime5	7758.958299607
ontime6	7758.958299607
ontime7	7758.958299607
ontime8	7755.7173293233
ontime9	7758.958299607
l1events	334949

2.1.4 Events

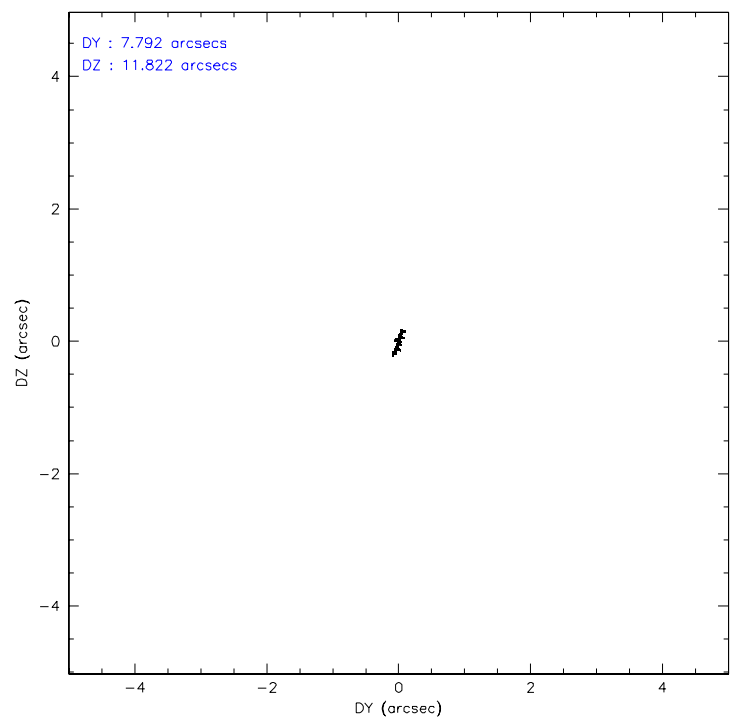
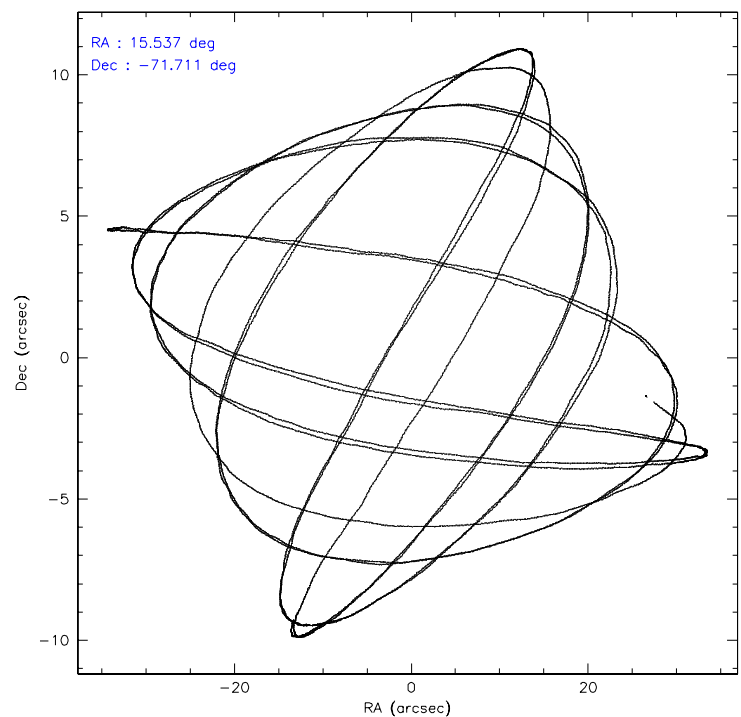
	ccd 4	ccd 5	ccd 6	ccd 7	ccd 8	ccd 9
level 1 events	76166	58491	48099	44872	60481	46840
rejected events	51630	28171	43295	24218	46854	42196
rejected %	67%	48%	90%	53%	77%	90%

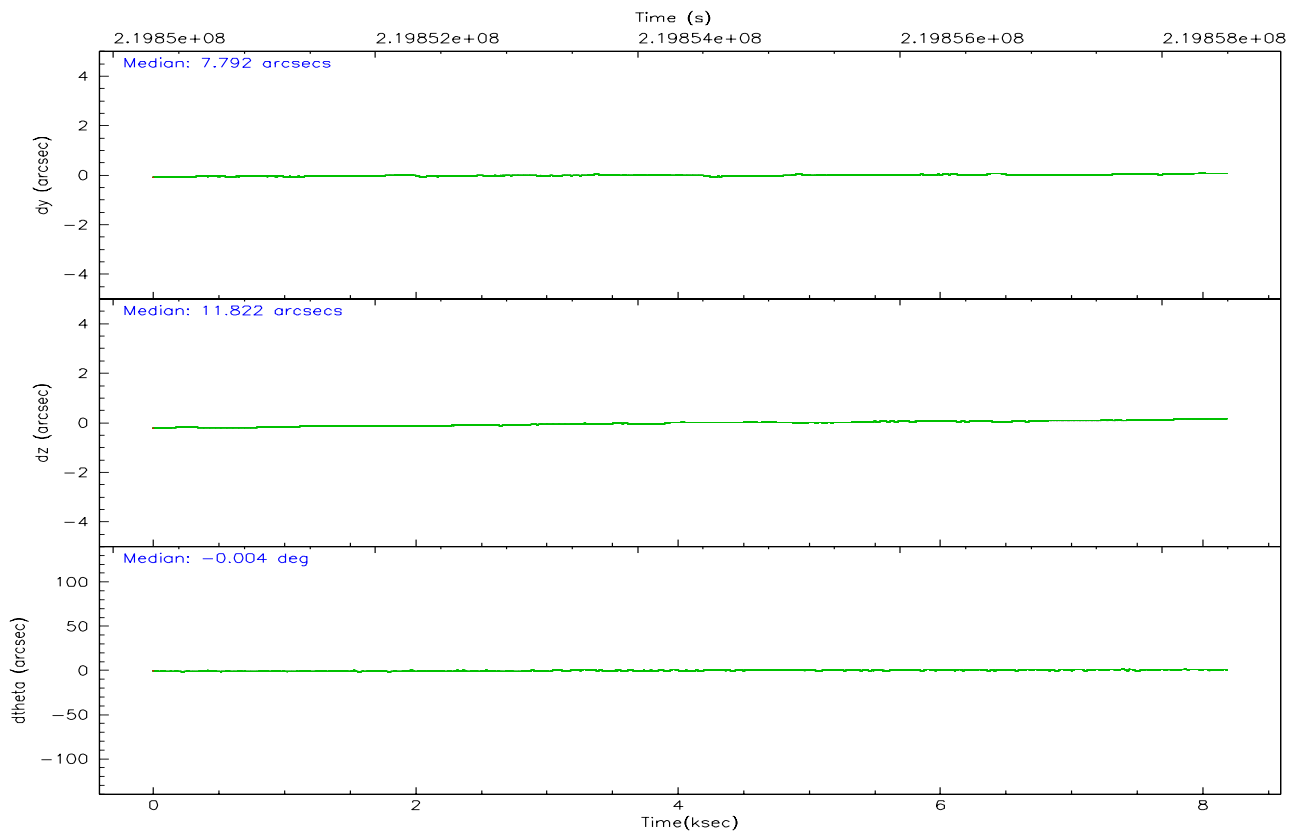
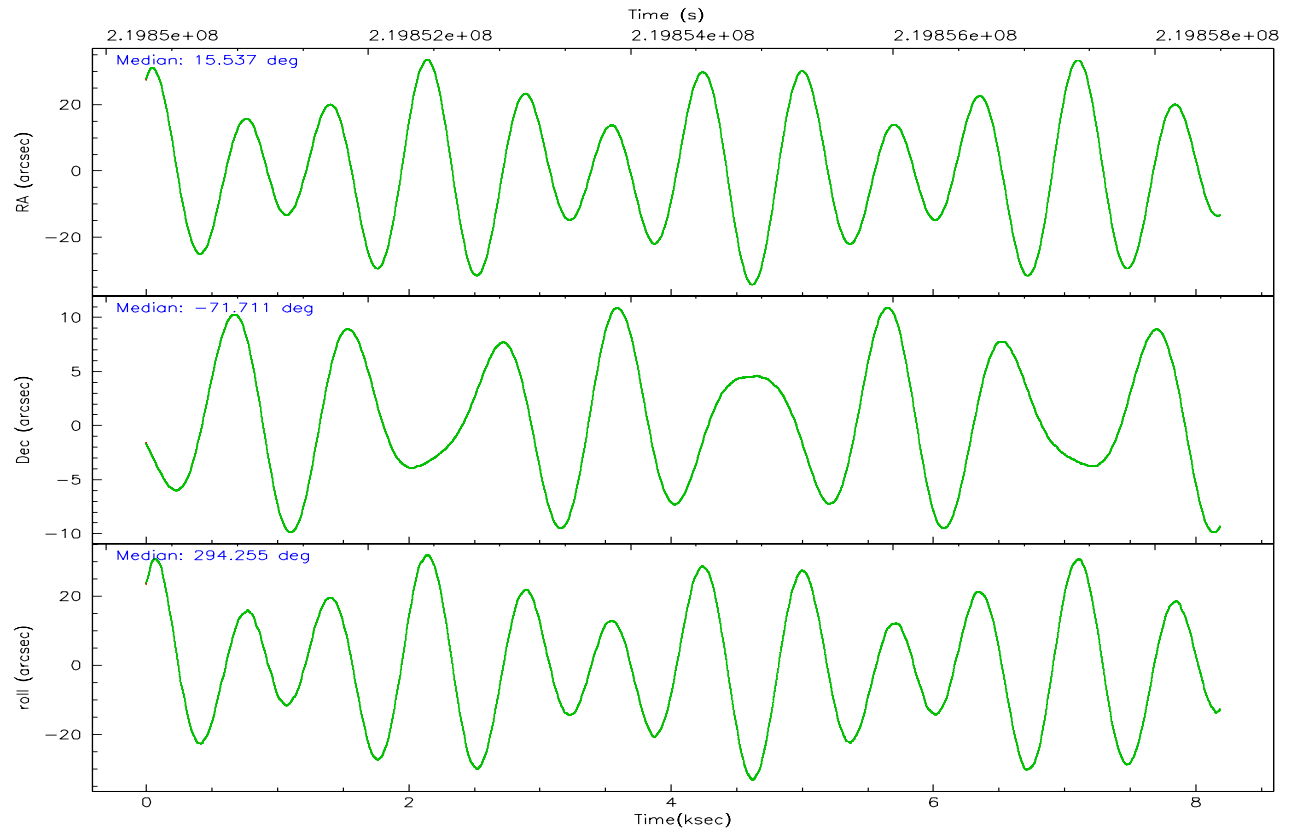
	ccd 4	ccd 5	ccd 6	ccd 7	ccd 8	ccd 9
grade 0 events	19776	2828	1742	1462	3804	1653
	25%	4%	3%	3%	6%	3%
grade 1 events	173	223	28	34	46	22
	0%	0%	0%	0%	0%	0%
grade 2 events	2297	9687	1075	5409	3007	980
	3%	16%	2%	12%	4%	2%
grade 3 events	824	874	481	1212	1658	518
	1%	1%	1%	2%	2%	1%
grade 4 events	762	862	539	1219	1481	528
	1%	1%	1%	2%	2%	1%
grade 5 events	1645	3323	1619	3378	2474	1785
	2%	5%	3%	7%	4%	3%
grade 6 events	890	16084	970	11360	3679	965
	1%	27%	2%	25%	6%	2%
grade 7 events	49799	24610	41645	20798	44332	40389
	65%	42%	86%	46%	73%	86%

2.2 Compared Parameters

Parameter	Planned	Actual	Parameter	Planned	Actual
Instrument	ACIS	ACIS	Obspar format version number	6	6
Detector	ACIS-456789	ACIS-456789	Obspar file type	PREDICTED	ACTUAL
Grating	NONE	NONE	Obspar update status	NONE	UPDATED
Data mode	VFAINT	VFAINT	On-chip summing requested	N	N
Observation mode	POINTING	POINTING	Subarray requested	NONE	NONE
Pointing RA	15.466325	15.5374524520081	Alternating exposures requested	N	N
Pointing Dec	-71.695159	-71.7107942303297	Primary exposure time	0.000000	3.2
Pointing Roll	294.032547	294.256700411246			
Window start time	215654464.184000	215654464.184000			
Window stop time	220838464.184000	220838464.184000			
SIM focus pos (mm)	-0.684267	-0.6828225247311905			
SIM defocus (mm)	0	0.001444936568705701			
SIM translation stage pos (mm)	-190.132523	-190.1400660498719			
SIM translation stage offset (mm)	0	0.00754346686406393			
Observation start time	219850490.184000	219850114.20109			
Observation start date	2004-12-19T13:33:46	2004-12-19T13:28:34			
Observation end time	219858490.184000	219858624.77647			
Observation end date	2004-12-19T15:47:06	2004-12-19T15:50:24			
Read mode	TIMED	TIMED			

2.3 Aspect



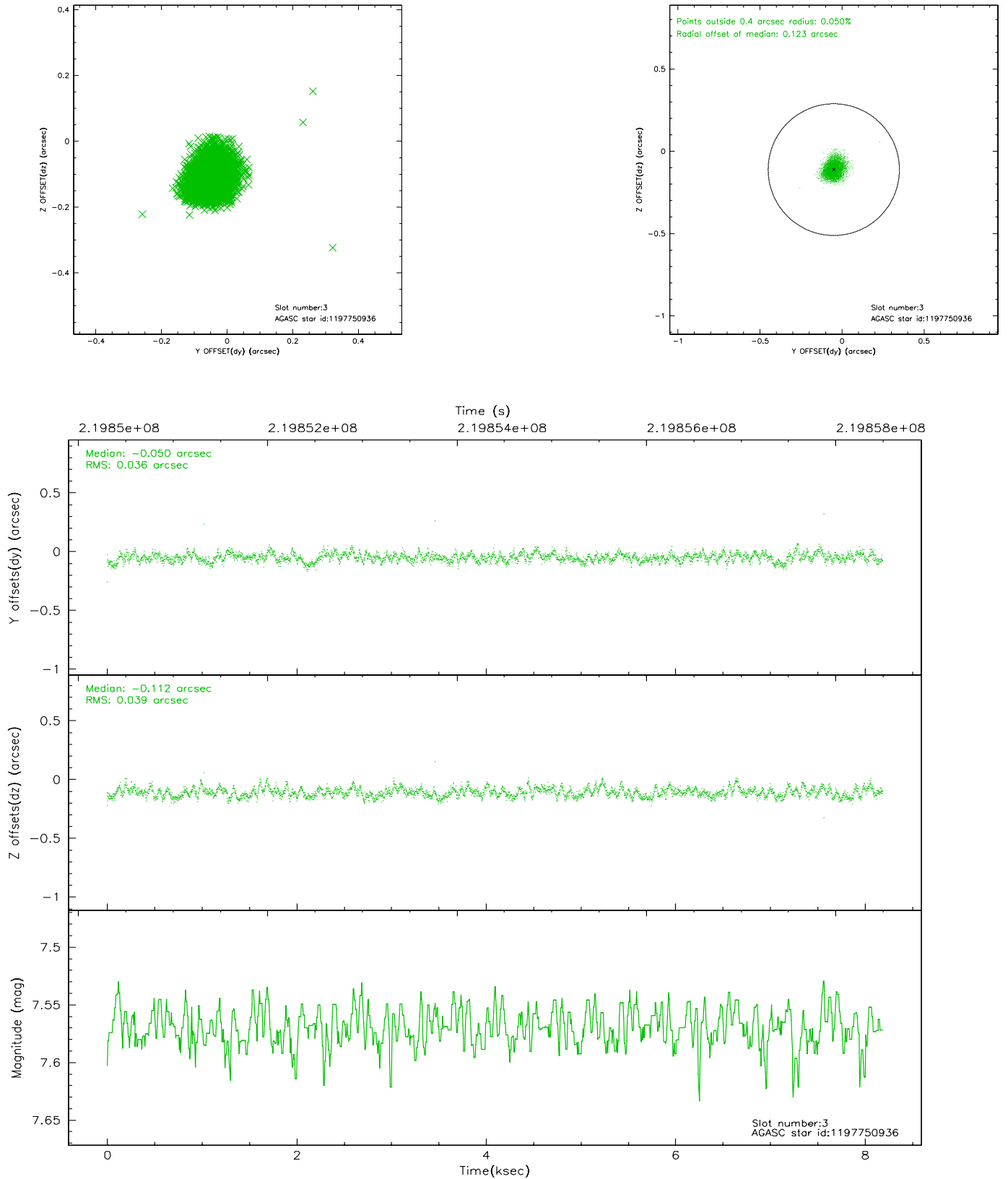


Slot Statistics

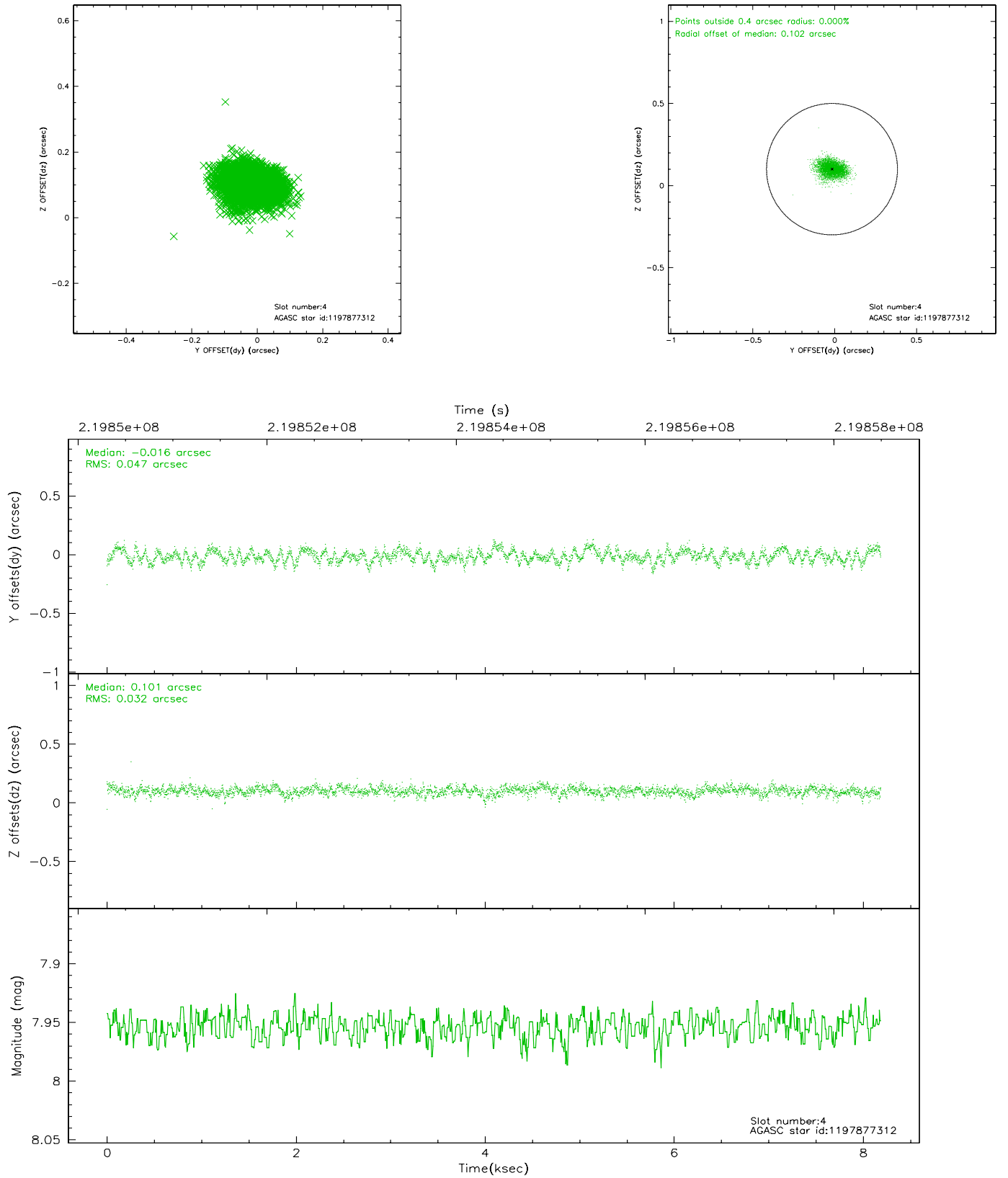
slot	status	id	mag	n_pts	med_dy	med_dz	dr1	dr2	ra	dec	mean_y	mean_z
0	FID	ACIS-S-2	7.10	1998	-0.001	0.013	0.007	0.011	0.000000	0.000000	-760.56	-1733.08
1	FID	ACIS-S-4	7.20	1998	0.026	-0.003	0.005	0.008	0.000000	0.000000	2152.43	174.69
2	FID	ACIS-S-5	7.23	1998	-0.056	-0.002	0.006	0.012	0.000000	0.000000	-1812.58	169.12
3	GUIDE	1197750936	7.57	3996	-0.050	-0.112	0.056	0.089	15.387940	-71.549550	-514.97	131.72
4	GUIDE	1197877312	7.95	3995	-0.016	0.101	0.060	0.099	16.362782	-70.933298	-2068.81	2076.77
5	GUIDE	1197884536	8.49	3994	0.037	0.027	0.064	0.100	17.160729	-71.835289	1258.90	1520.83
6	GUIDE	1197884712	8.32	3995	0.016	0.093	0.064	0.105	16.087398	-72.252690	2114.20	-195.85
7	GUIDE	1197885328	7.23	3995	0.013	-0.112	0.048	0.081	16.283090	-71.733943	508.99	782.69

2.4 Star Slots

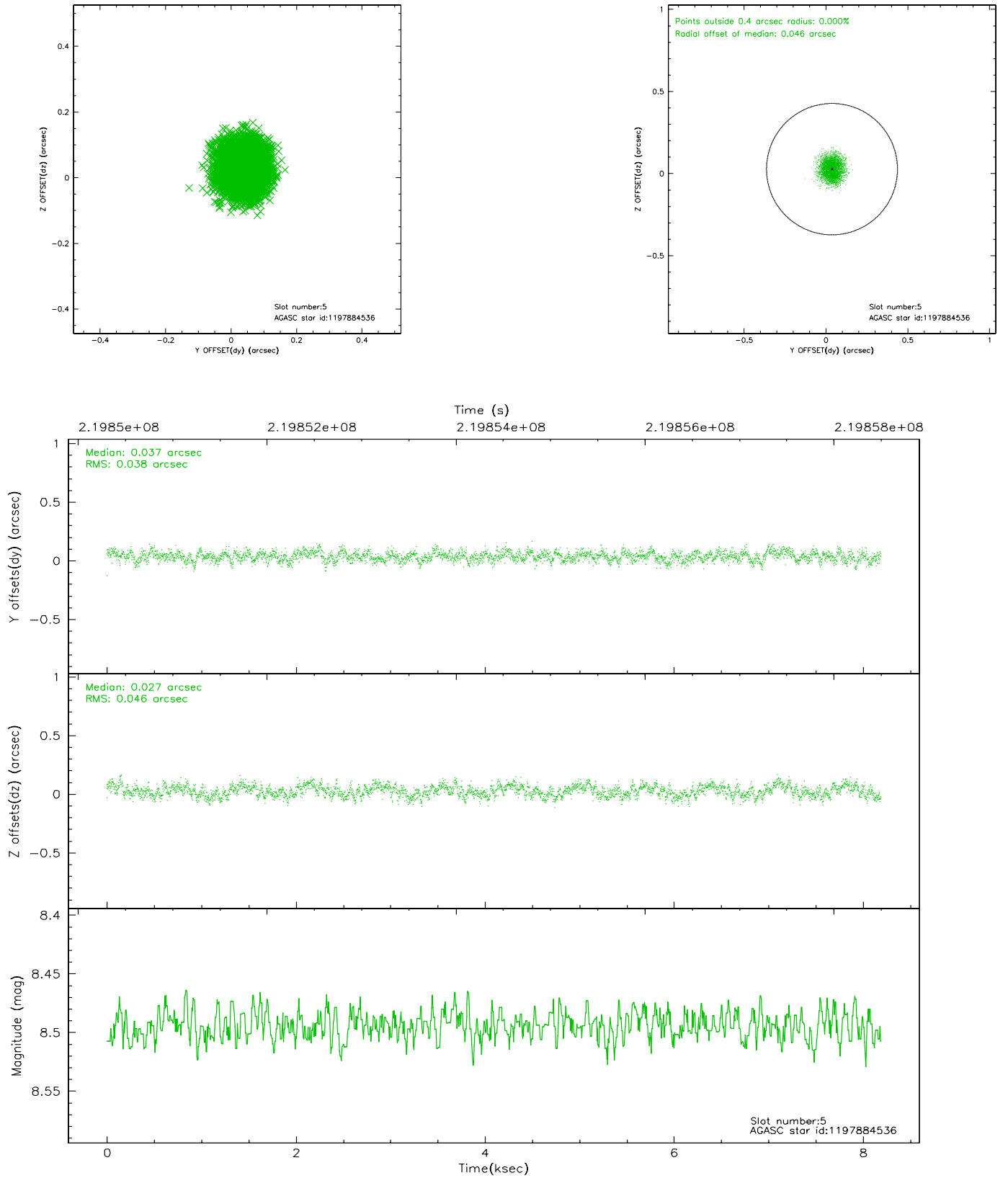
2.4.1 Slot 3



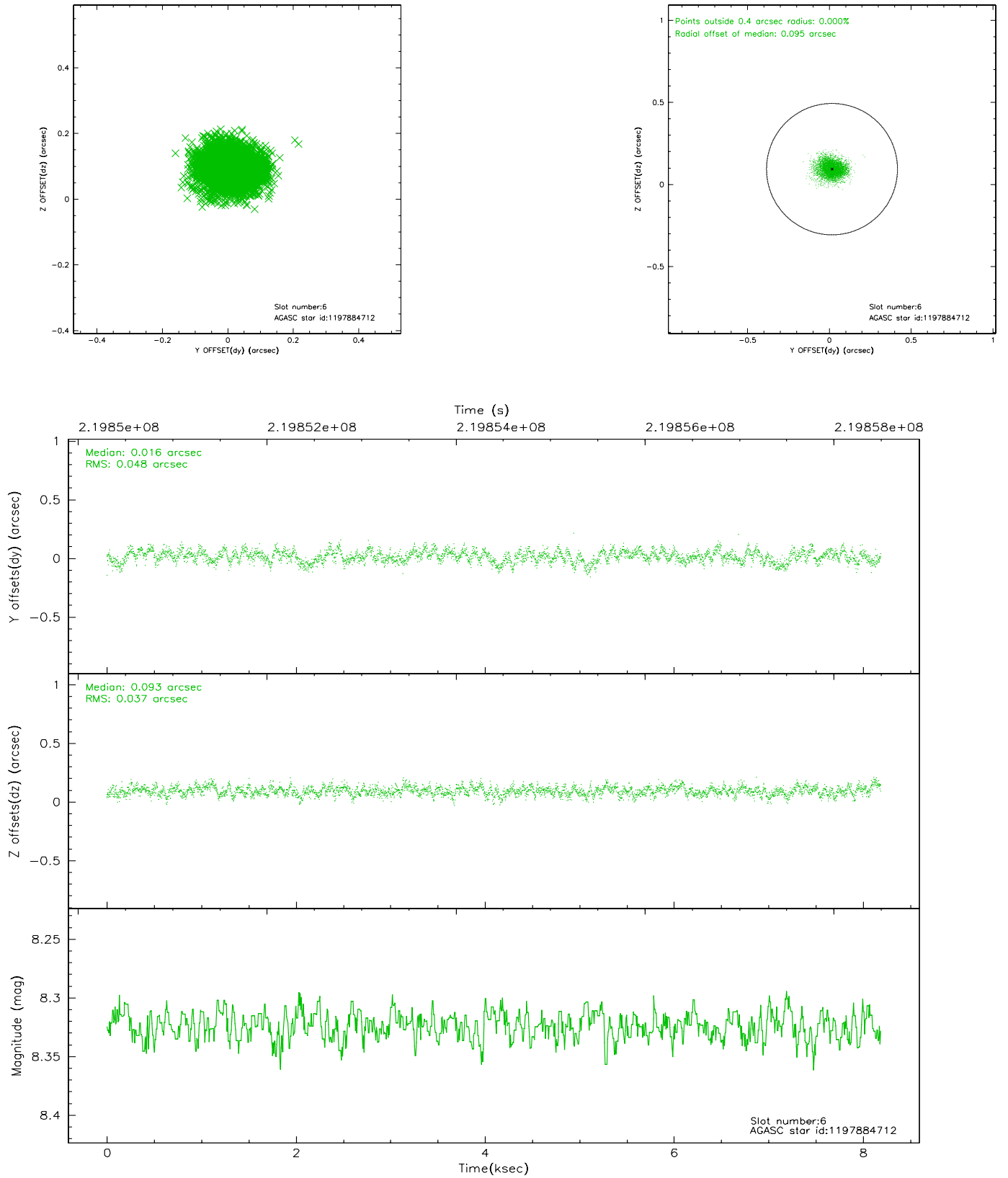
2.4.2 Slot 4



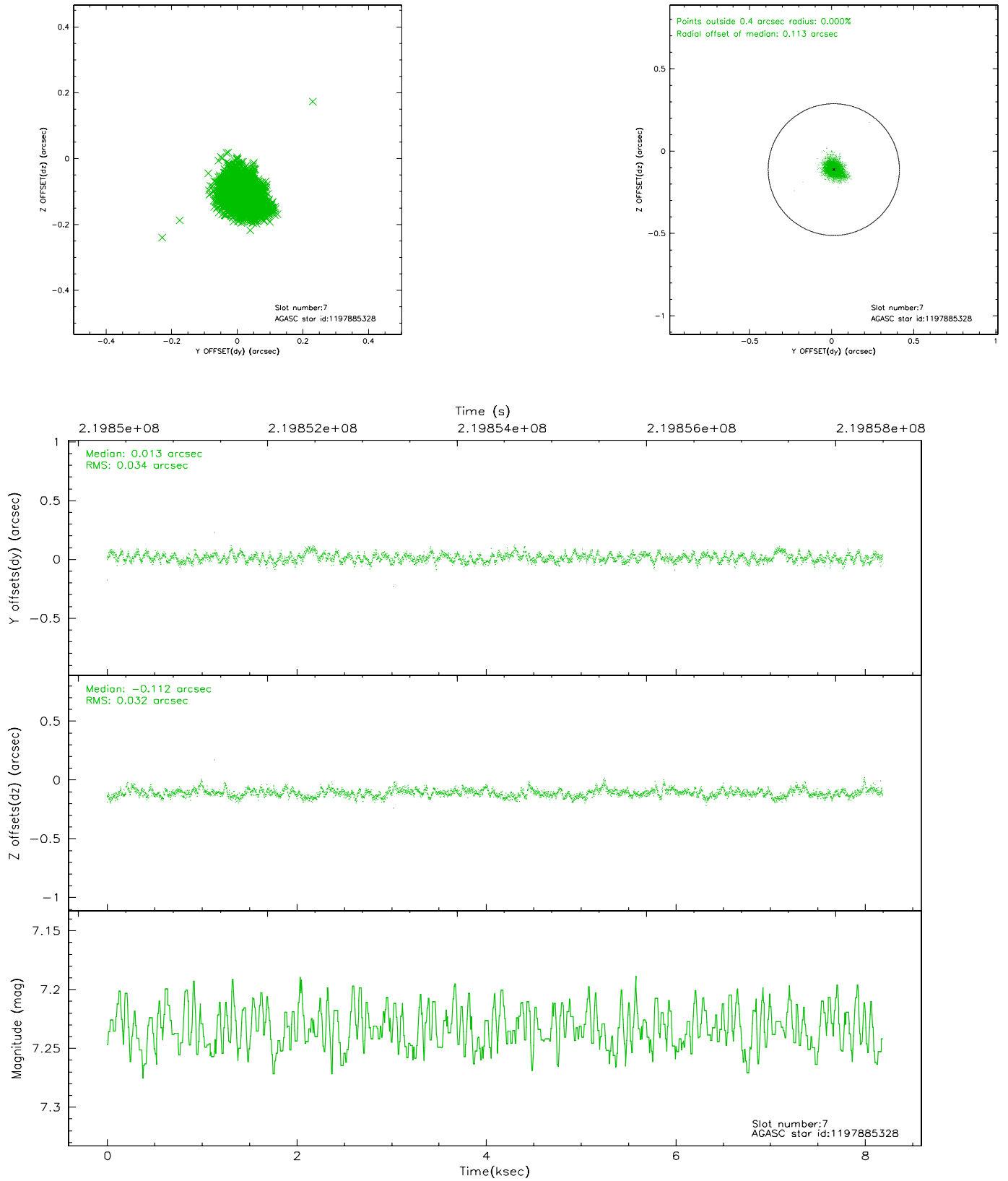
2.4.3 Slot 5



2.4.4 Slot 6

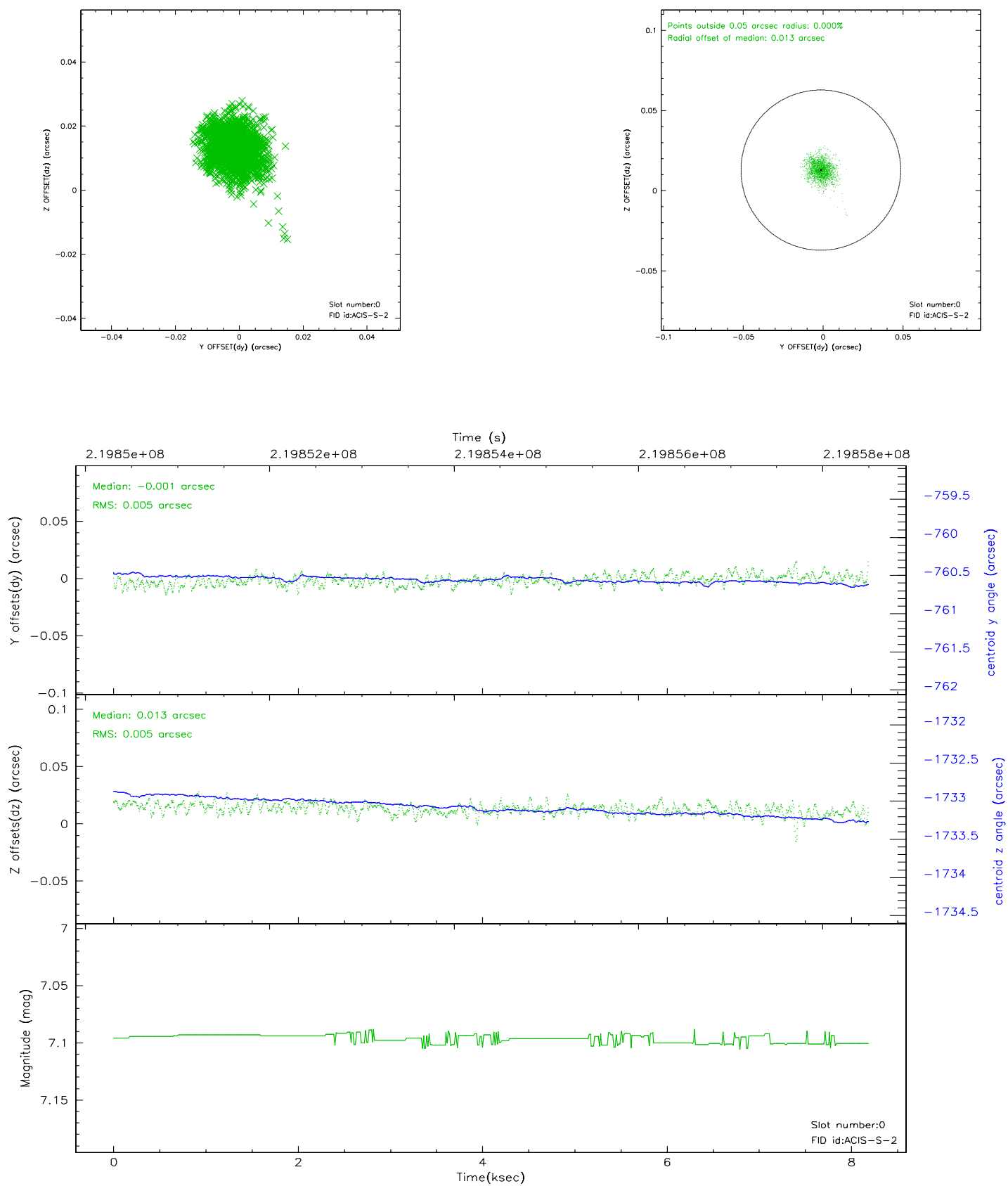


2.4.5 Slot 7

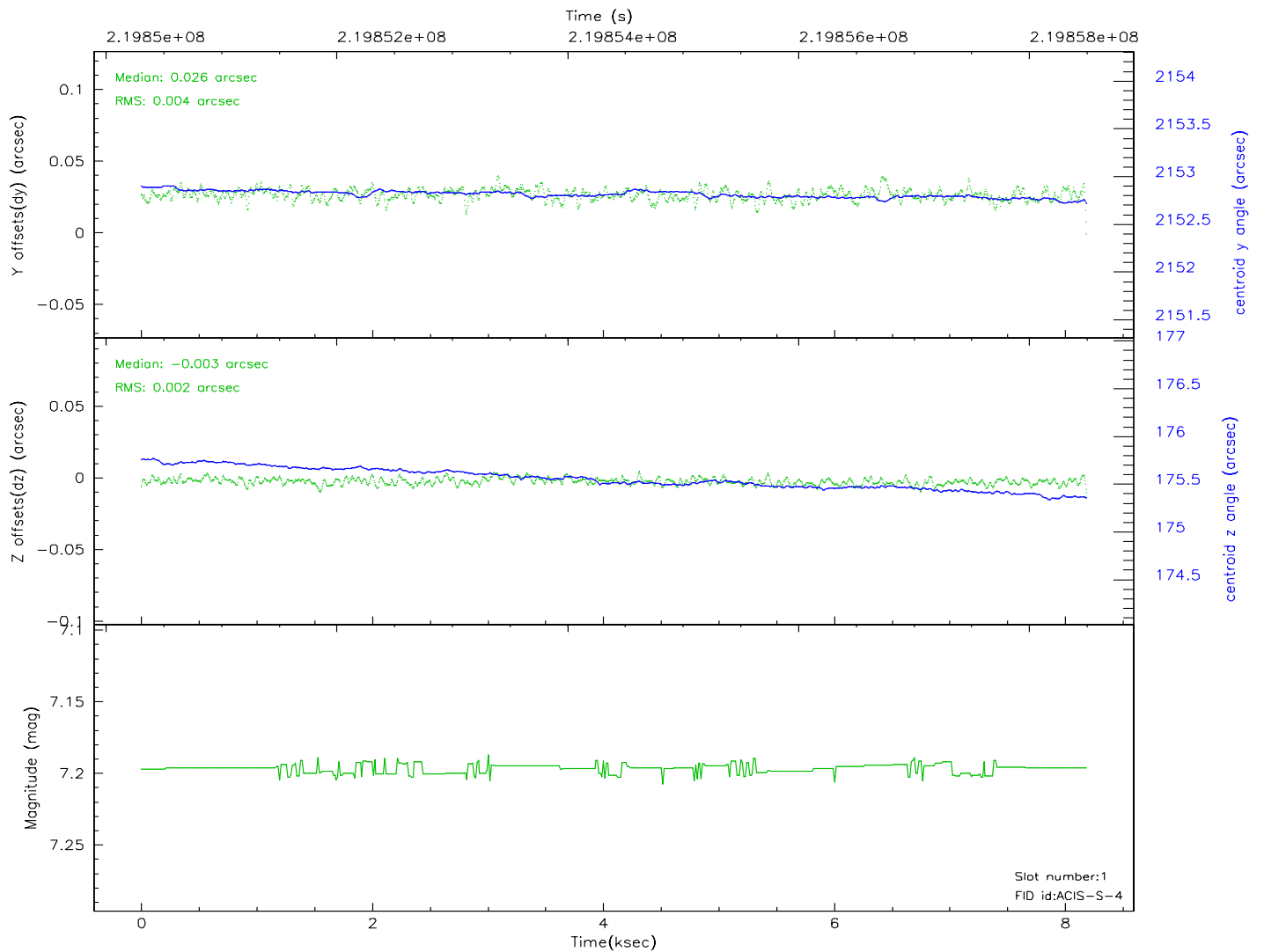
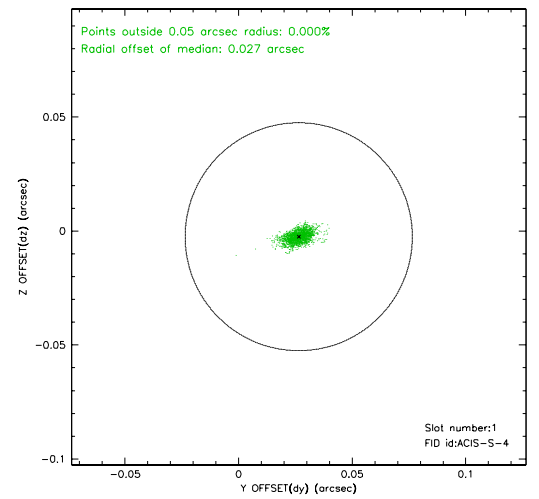
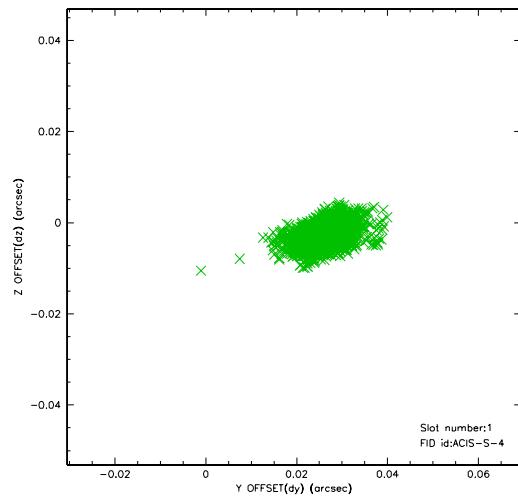


2.5 FID Slots

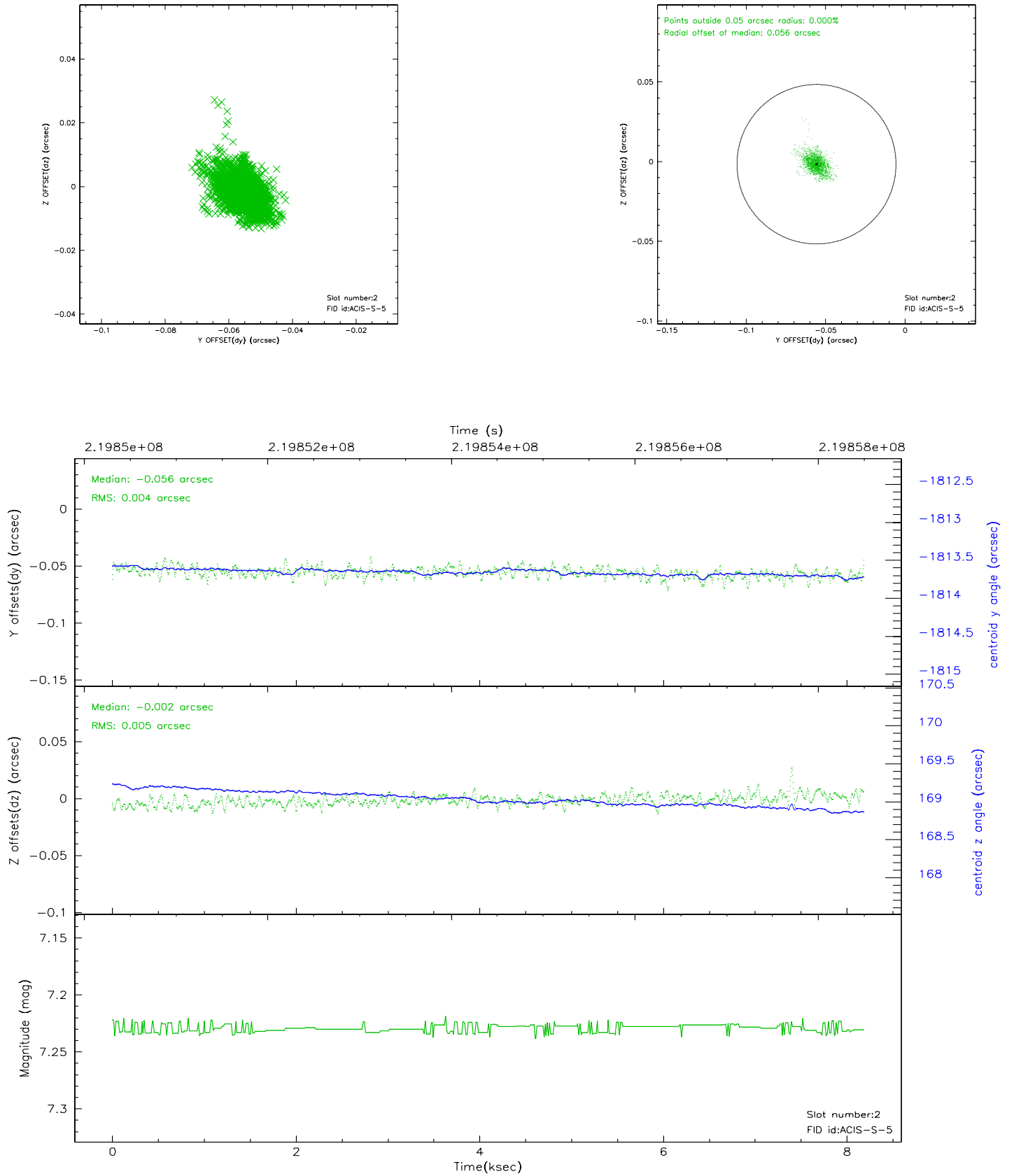
2.5.1 Slot 0



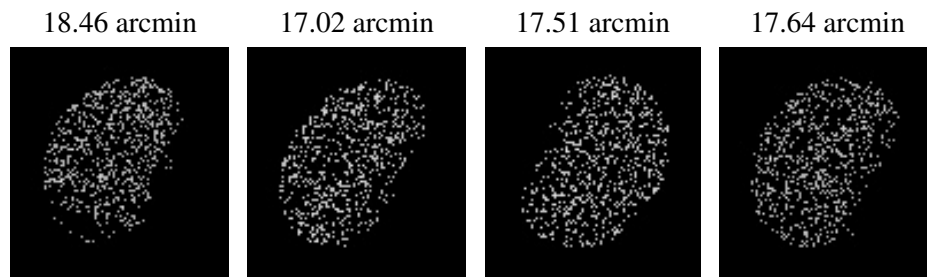
2.5.2 Slot 1



2.5.3 Slot 2



3 Point Sources



A Summary

A.1 Status

V&V Scientist	Beth Sundheim
V&V Date (YYYY-MM-DD)	2006.04.07
V&V Edition	1
V&V Disposition and Status	OK
V&V Charge Time	7.753599

A.2 Comments

Window constraint satisfied.