

V&V Reference Report

L2 ASCDS Version : 7.6.7.1

Observation 6076 - L2 Version 002
Chandra X-Ray Center

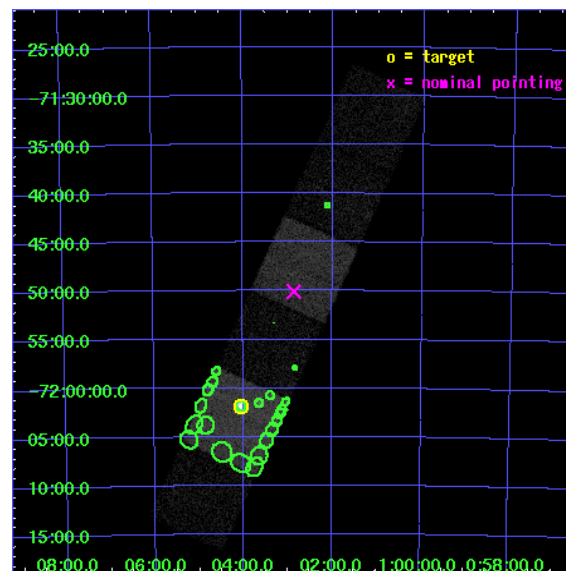
L2 Processing Date : Apr 7 2006

Contents

1	Front	2
2	OBI	3
2.1	OBI	3
2.1.1	Images	3
2.1.2	Bias	3
2.1.3	Parameters	4
2.1.4	Events	4
2.2	Compared Parameters	5
2.3	Aspect	6
2.4	Star Slots	9
2.4.1	Slot 3	9
2.4.2	Slot 4	10
2.4.3	Slot 5	11
2.4.4	Slot 6	12
2.4.5	Slot 7	13
2.5	FID Slots	14
2.5.1	Slot 0	14
2.5.2	Slot 1	15
2.5.3	Slot 2	16
3	Point Sources	17
A	Summary	18
A.1	Status	18
A.2	Comments	18

1 Front

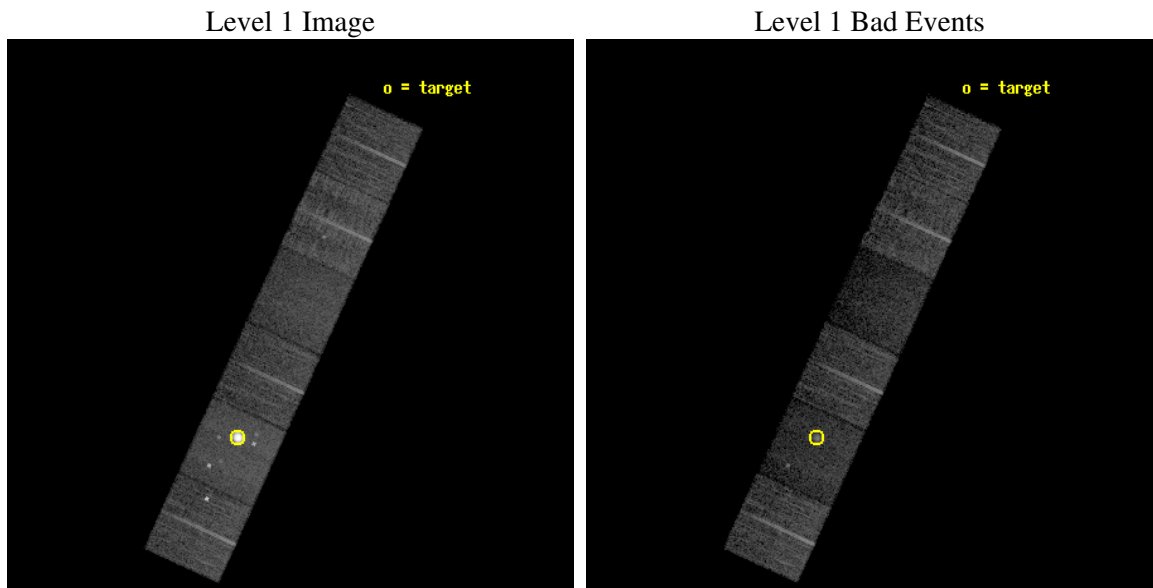
seq_num	590403
obs_id	6076
title	AO6A ACIS-S Calibration Observations of E0102-72
observer	Dr. CXC Calibration
object	E0102-72[S1,-120,13.29,0,0]
dtcycle	0
cycle	P
ra_targ	16.01
dec_targ	-72.032028
ra_nom	15.714464092913
dec_nom	-71.834721398323
roll_nom	294.49585565394
revision	2
ontime	7951.9999703765
livetime	7851.3069586321
ontime4	7948.7590000927
ontime5	7951.9999703765
ontime6	7951.9999703765
ontime7	7951.9999703765
ontime8	7951.9999703765
ontime9	7951.9999703765
l2events	108712



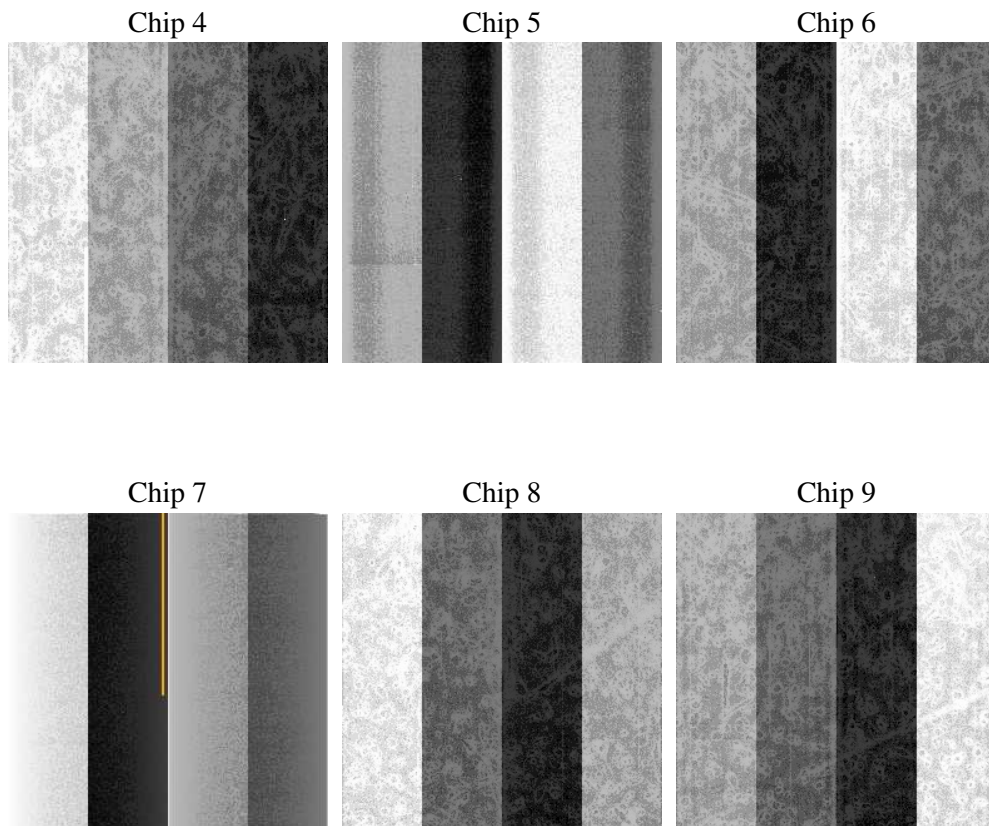
2 OBI

2.1 OBI

2.1.1 Images



2.1.2 Bias



2.1.3 Parameters

obi_num	1
ascdsver	7.6.7.1
caldbver	3.2.1
date	2006-04-07T07:33:37
revision	2

sched_exp_time	8000.000000
ontime	7959.9004886746
ontime4	7956.6595183909
ontime5	7959.9004886746
ontime6	7959.9004886746
ontime7	7959.9005185664
ontime8	7959.9004886746
ontime9	7959.9004886746
llevents	364727

2.1.4 Events

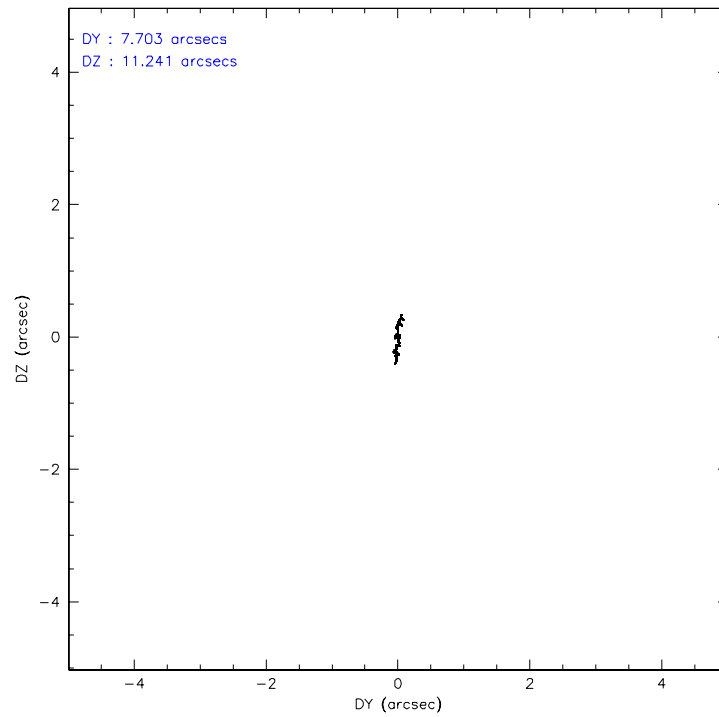
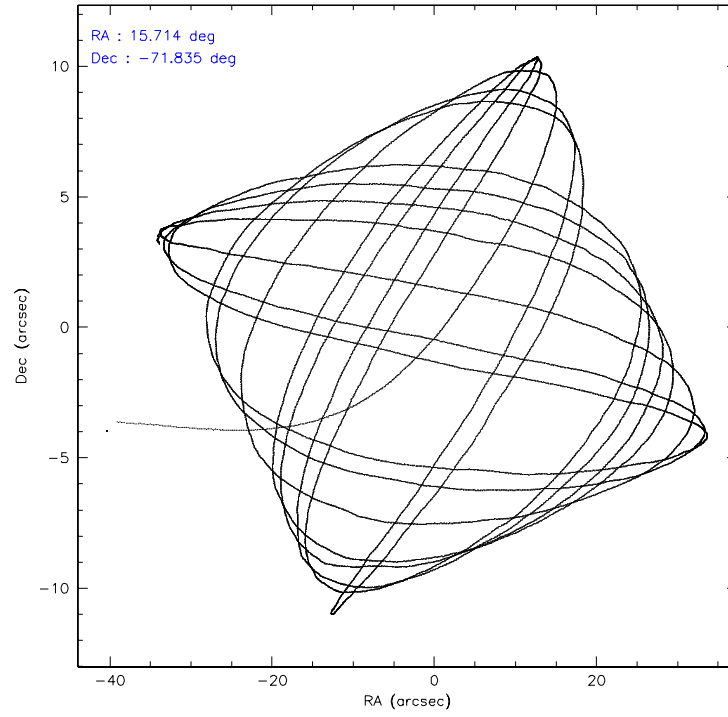
	ccd 4	ccd 5	ccd 6	ccd 7	ccd 8	ccd 9
level 1 events	57705	105884	48279	44845	60779	47235
rejected events	49964	29601	43182	24322	46802	42351
rejected %	86%	27%	89%	54%	77%	89%

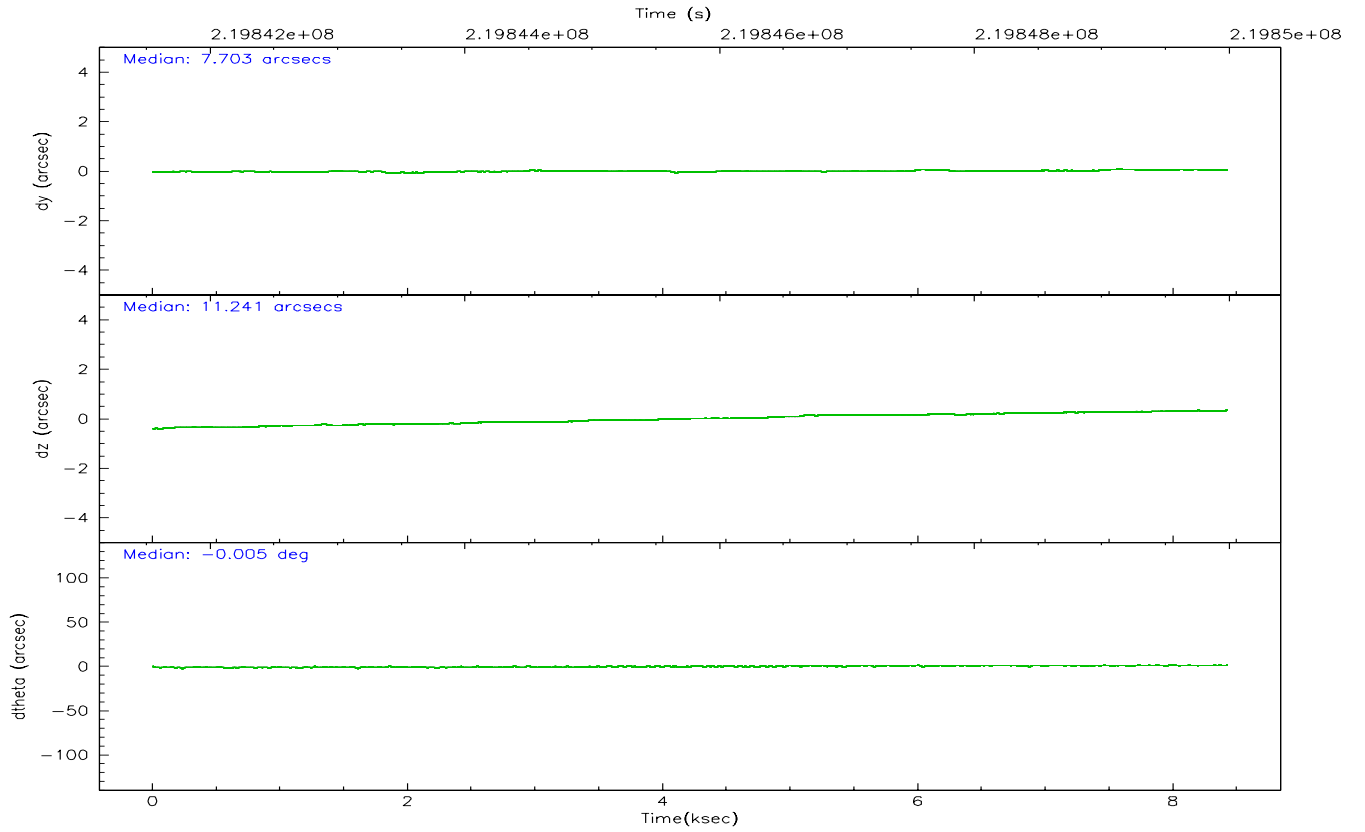
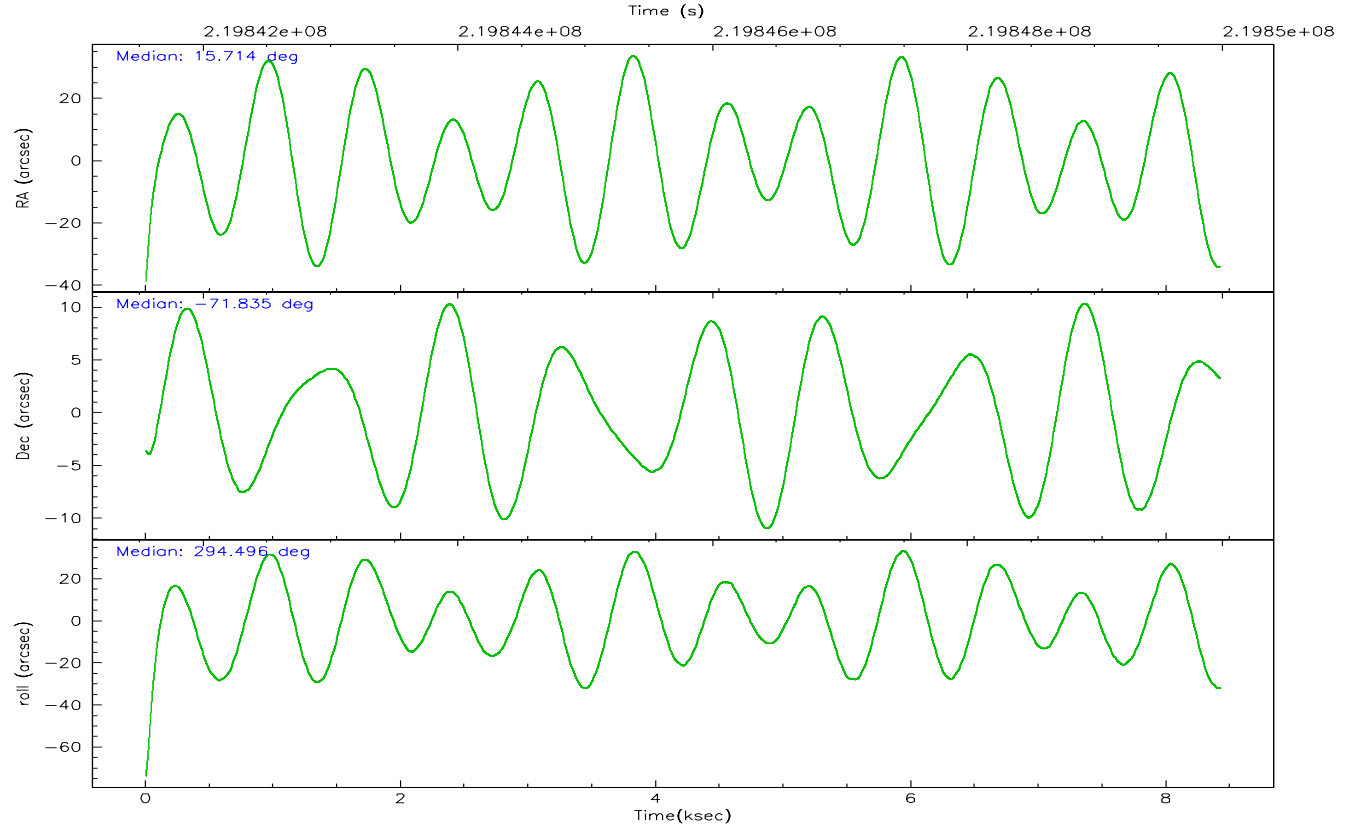
	ccd 4	ccd 5	ccd 6	ccd 7	ccd 8	ccd 9
grade 0 events	4584	23391	1977	1450	3837	1791
	7%	22%	4%	3%	6%	3%
grade 1 events	60	344	21	27	38	24
	0%	0%	0%	0%	0%	0%
grade 2 events	1186	22968	1008	5172	3257	1026
	2%	21%	2%	11%	5%	2%
grade 3 events	589	4574	560	1206	1507	555
	1%	4%	1%	2%	2%	1%
grade 4 events	569	5018	537	1283	1441	535
	0%	4%	1%	2%	2%	1%
grade 5 events	1567	3849	1611	3514	2554	1839
	2%	3%	3%	7%	4%	3%
grade 6 events	821	20402	1017	11429	3942	982
	1%	19%	2%	25%	6%	2%
grade 7 events	48329	25338	41548	20764	44203	40483
	83%	23%	86%	46%	72%	85%

2.2 Compared Parameters

Parameter	Planned	Actual	Parameter	Planned	Actual
Instrument	ACIS	ACIS	Obspar format version number	6	6
Detector	ACIS-456789	ACIS-456789	Obspar file type	PREDICTED	ACTUAL
Grating	NONE	NONE	Obspar update status	NONE	UPDATED
Data mode	VFAINT	VFAINT	On-chip summing requested	N	N
Observation mode	POINTING	POINTING	Subarray requested	NONE	NONE
Pointing RA	15.642791	15.71446409291348	Alternating exposures requested	N	N
Pointing Dec	-71.819267	-71.83472139832264	Primary exposure time	0.000000	3.2
Pointing Roll	294.271184	294.4958556539378			
Window start time	215654464.184000	215654464.184000			
Window stop time	220838464.184000	220838464.184000			
SIM focus pos (mm)	-0.684267	-0.6828225247311905			
SIM defocus (mm)	0	0.001444936568705701			
SIM translation stage pos (mm)	-190.132523	-190.1400660498719			
SIM translation stage offset (mm)	0	0.00754346686406393			
Observation start time	219841980.184000	219840899.45067			
Observation start date	2004-12-19T11:11:56	2004-12-19T10:54:59			
Observation end time	219849980.184000	219850114.20109			
Observation end date	2004-12-19T13:25:16	2004-12-19T13:28:34			
Read mode	TIMED	TIMED			

2.3 Aspect



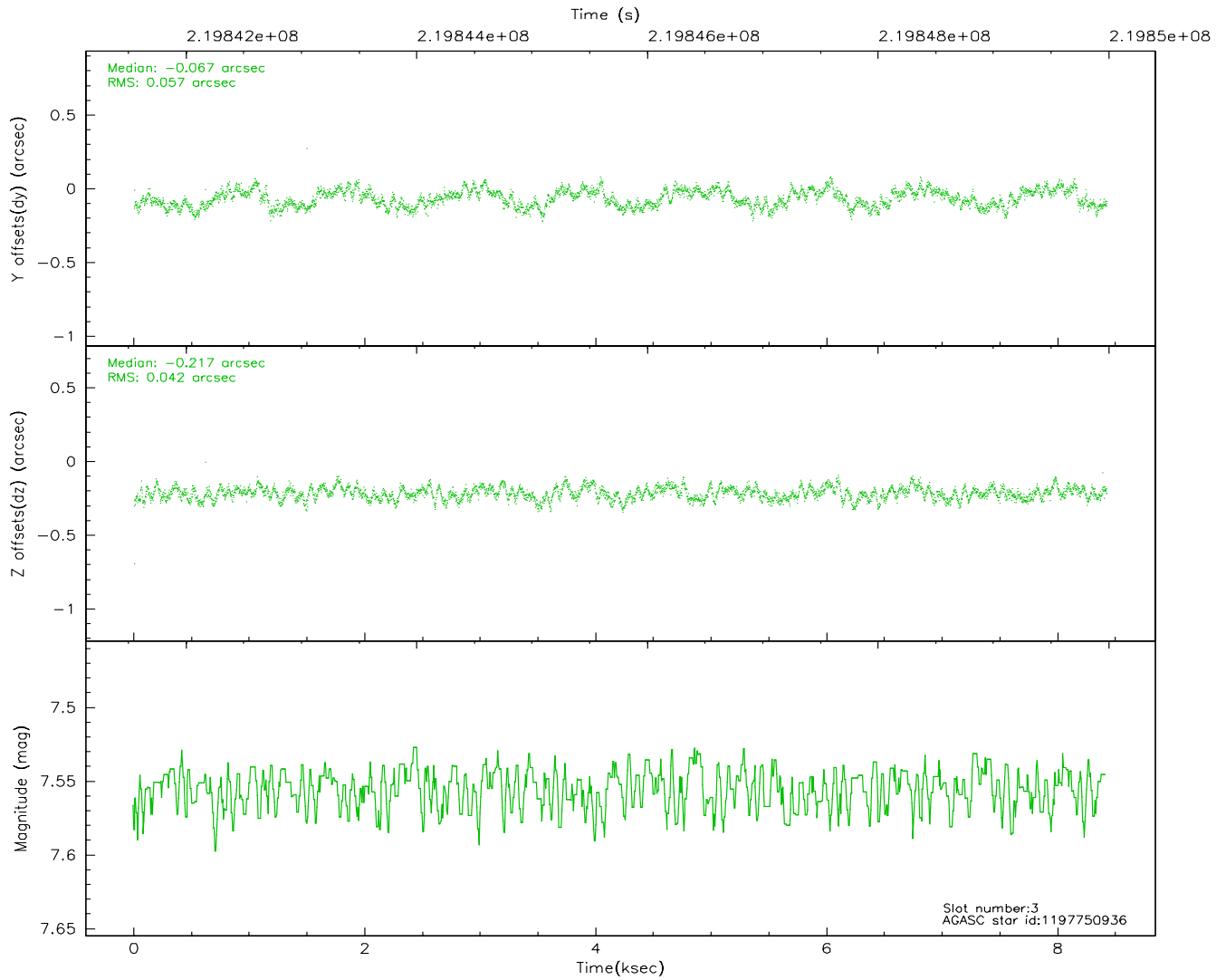
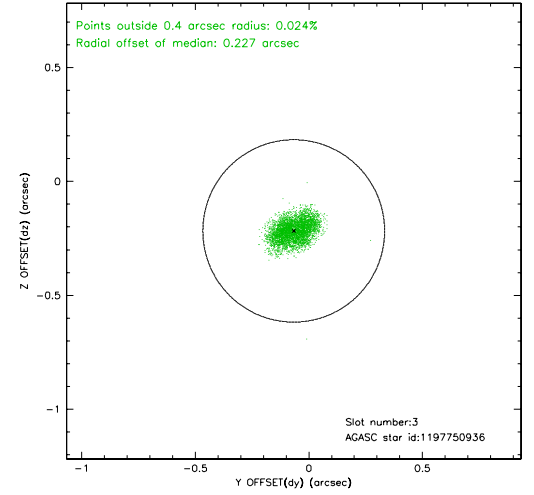
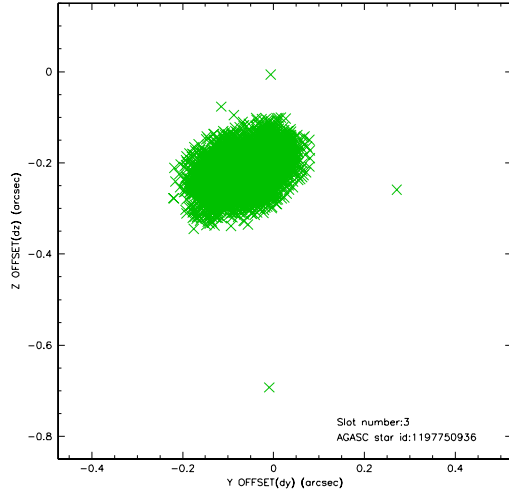


Slot Statistics

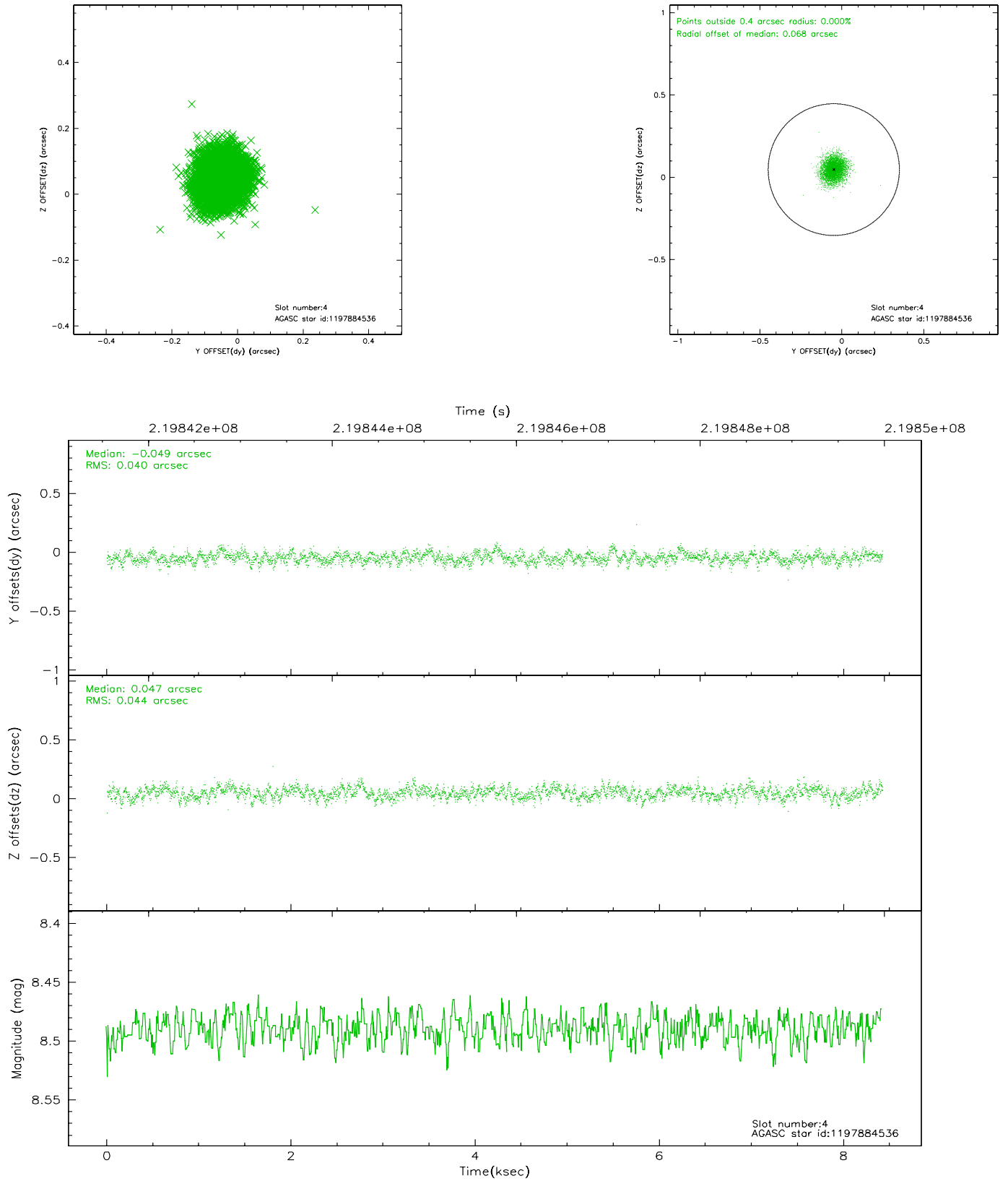
slot	status	id	mag	n_pts	med_dy	med_dz	dr1	dr2	ra	dec	mean_y	mean_z
0	FID	ACIS-S-2	7.10	2054	-0.021	0.015	0.009	0.014	0.000000	0.000000	-760.47	-1732.51
1	FID	ACIS-S-4	7.20	2054	0.038	0.006	0.008	0.013	0.000000	0.000000	2152.54	175.32
2	FID	ACIS-S-5	7.23	2054	-0.048	-0.012	0.007	0.011	0.000000	0.000000	-1812.52	169.67
3	GUIDE	1197750936	7.55	4107	-0.067	-0.217	0.076	0.117	15.387940	-71.549550	-1003.33	134.13
4	GUIDE	1197884536	8.49	4109	-0.049	0.047	0.064	0.103	17.160729	-71.835289	772.52	1520.58
5	GUIDE	1197884712	8.31	4108	0.140	0.102	0.060	0.097	16.087398	-72.252690	1625.43	-196.70
6	GUIDE	1197885104	9.36	4042	0.133	0.048	0.111	0.179	17.845067	-72.189368	2252.94	1644.10
7	GUIDE	1197750896	9.81	4102	-0.158	0.020	0.106	0.174	12.910875	-71.532544	-2156.11	-2443.20

2.4 Star Slots

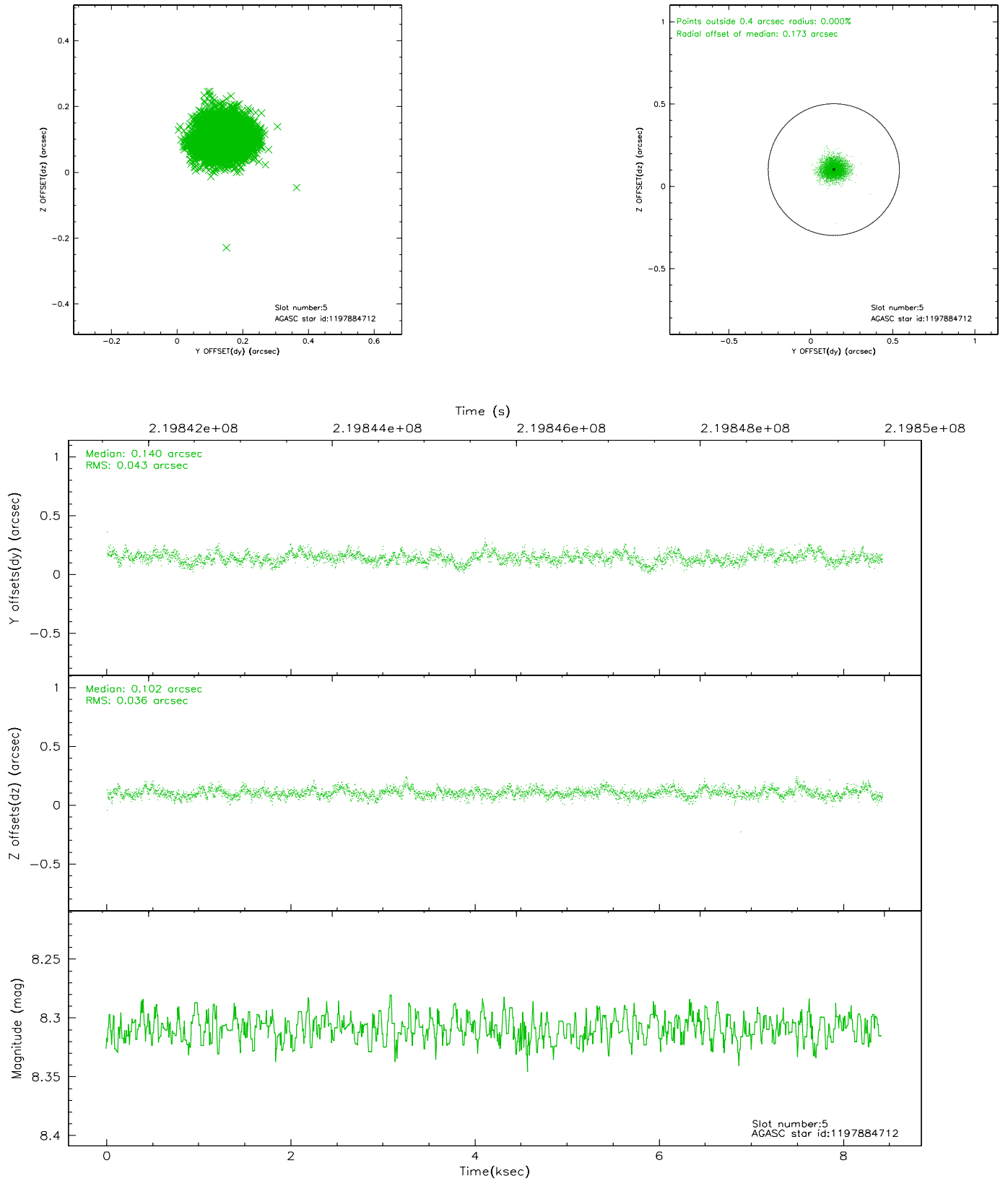
2.4.1 Slot 3



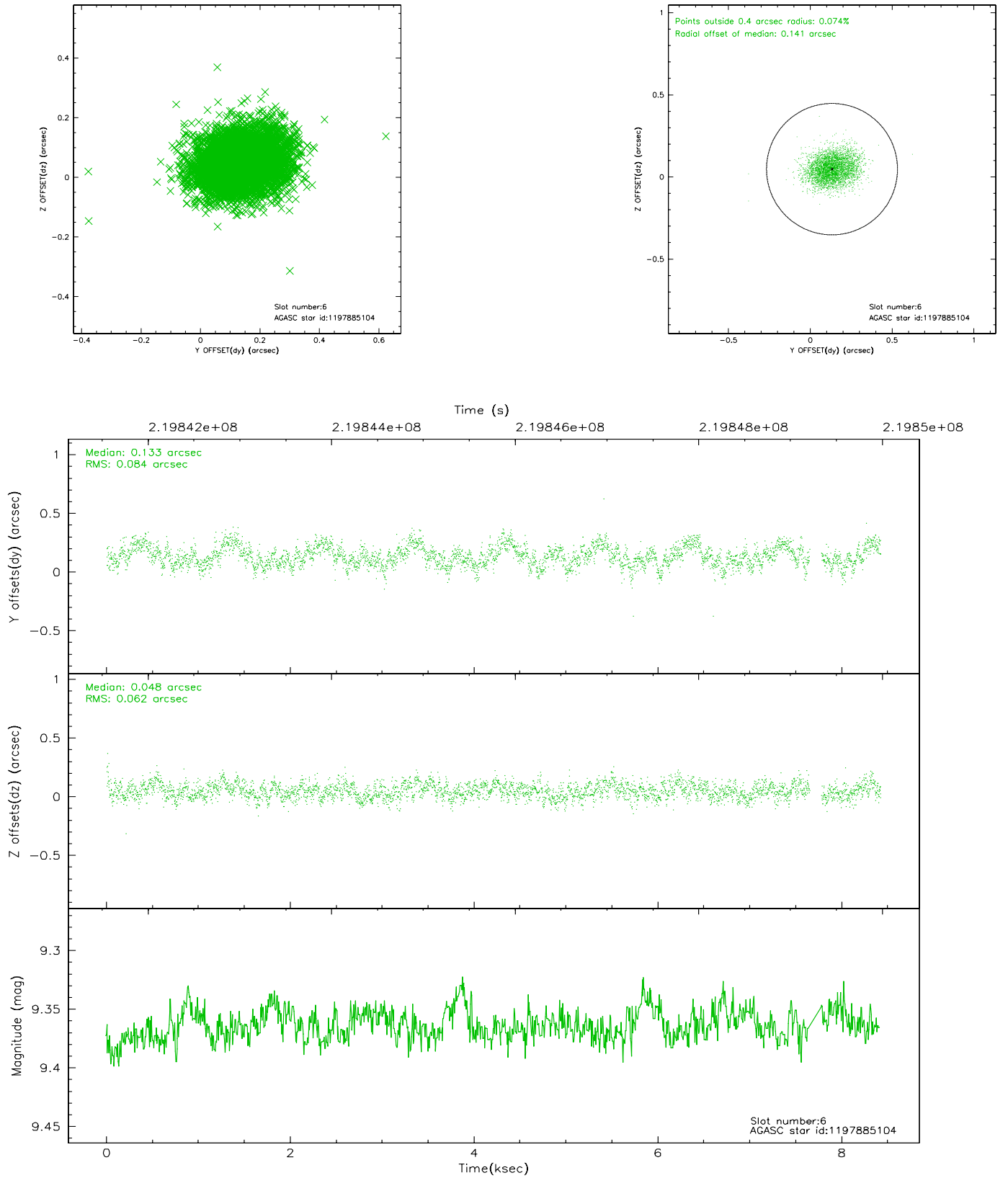
2.4.2 Slot 4



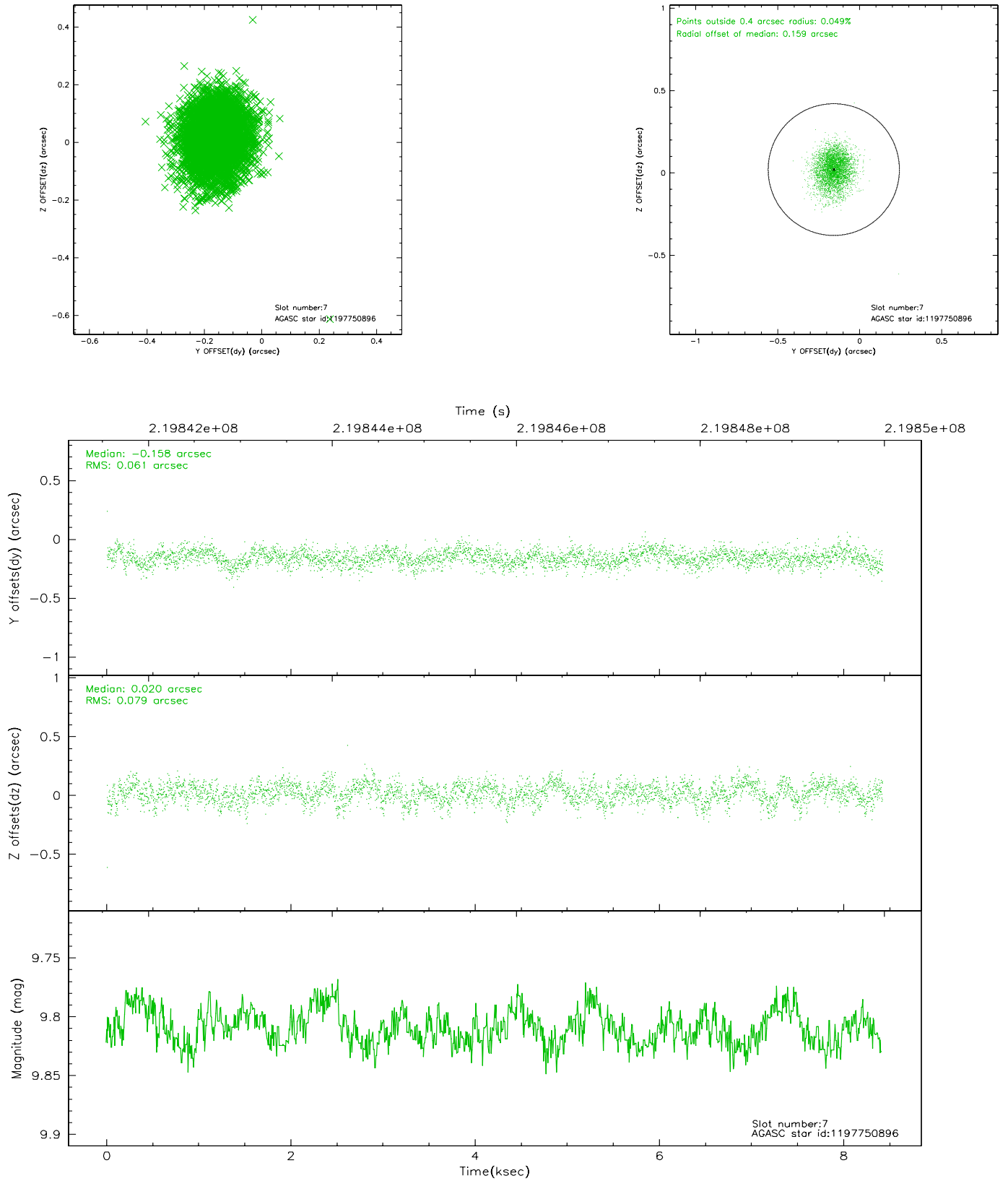
2.4.3 Slot 5



2.4.4 Slot 6

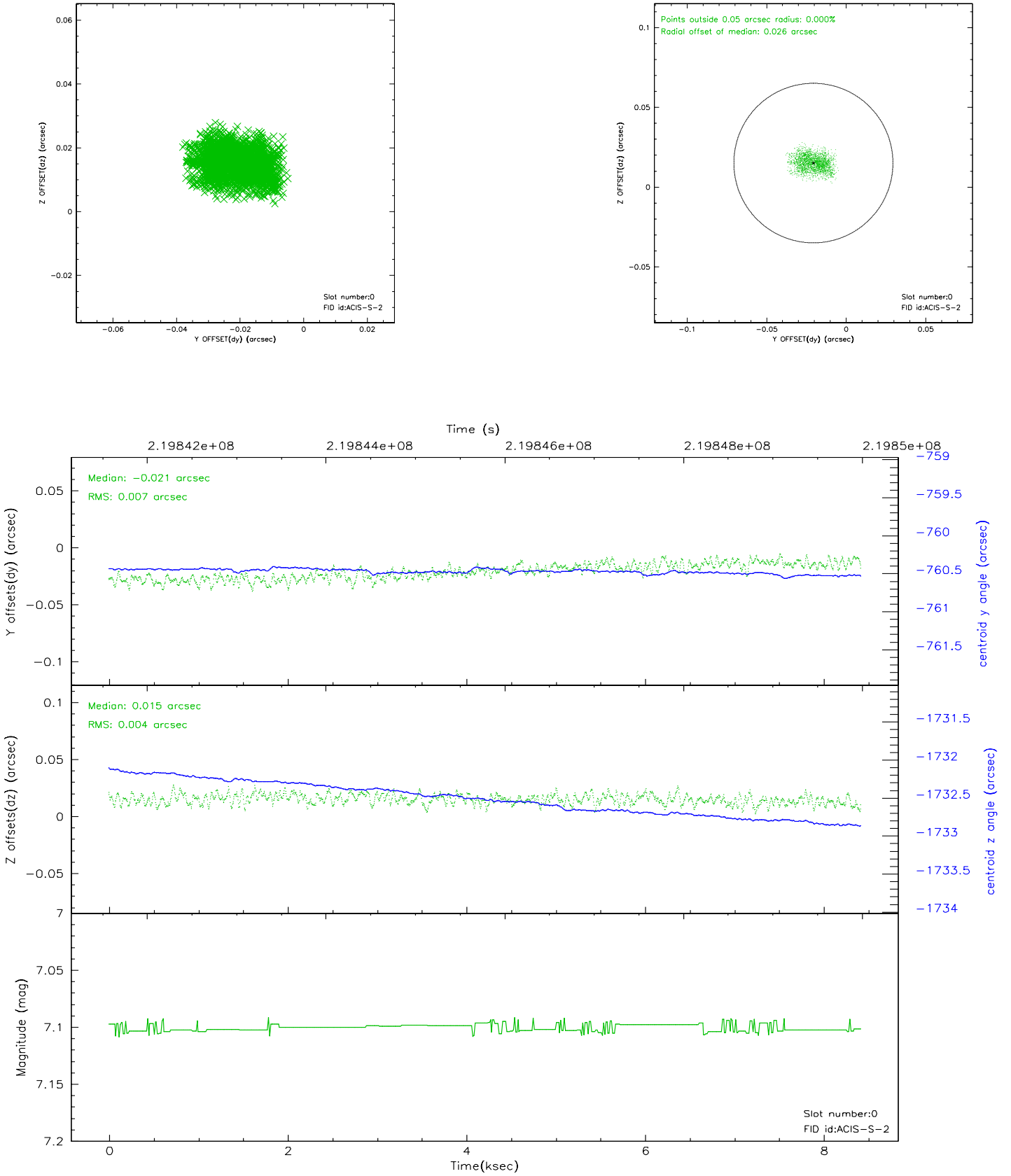


2.4.5 Slot 7

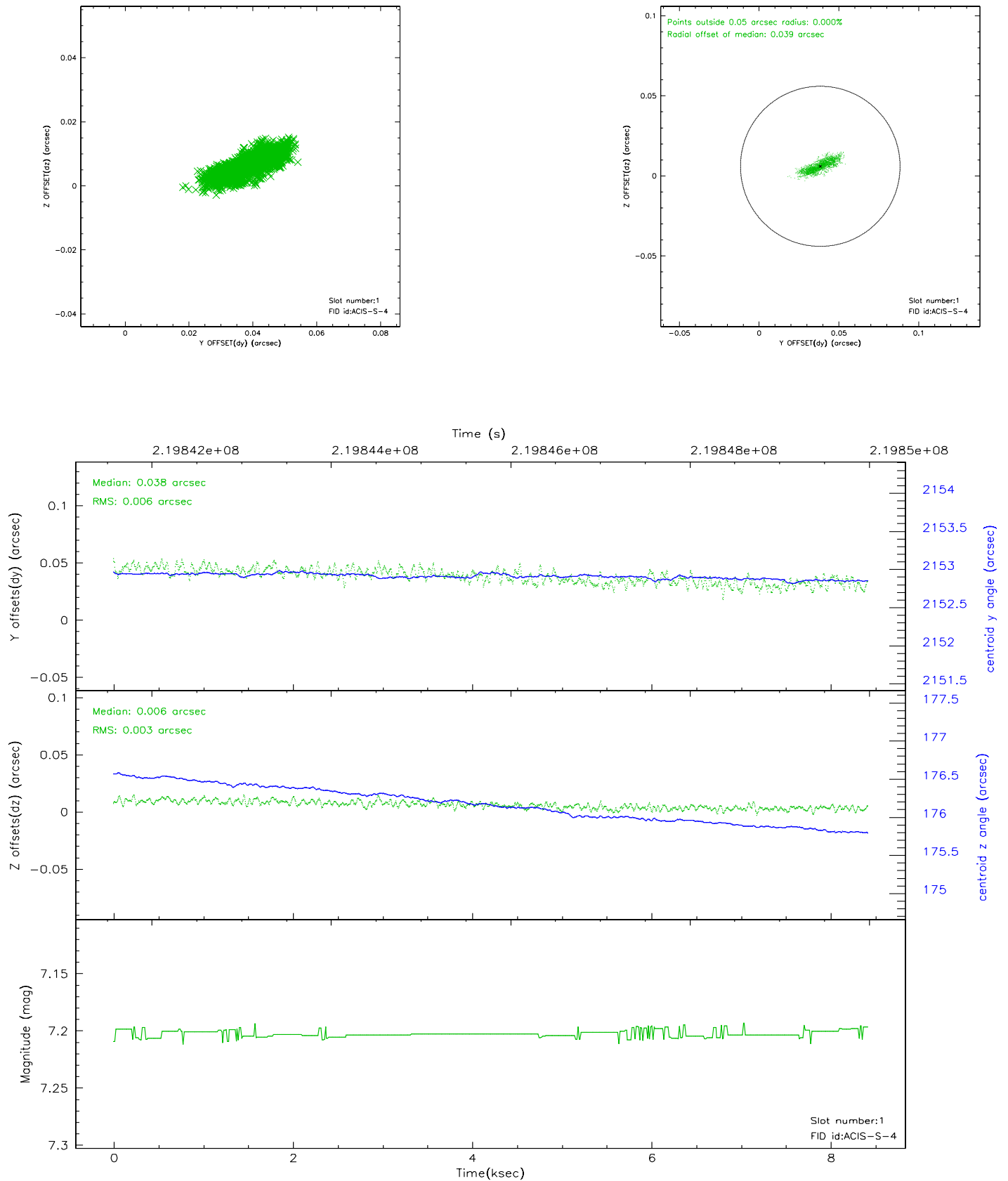


2.5 FID Slots

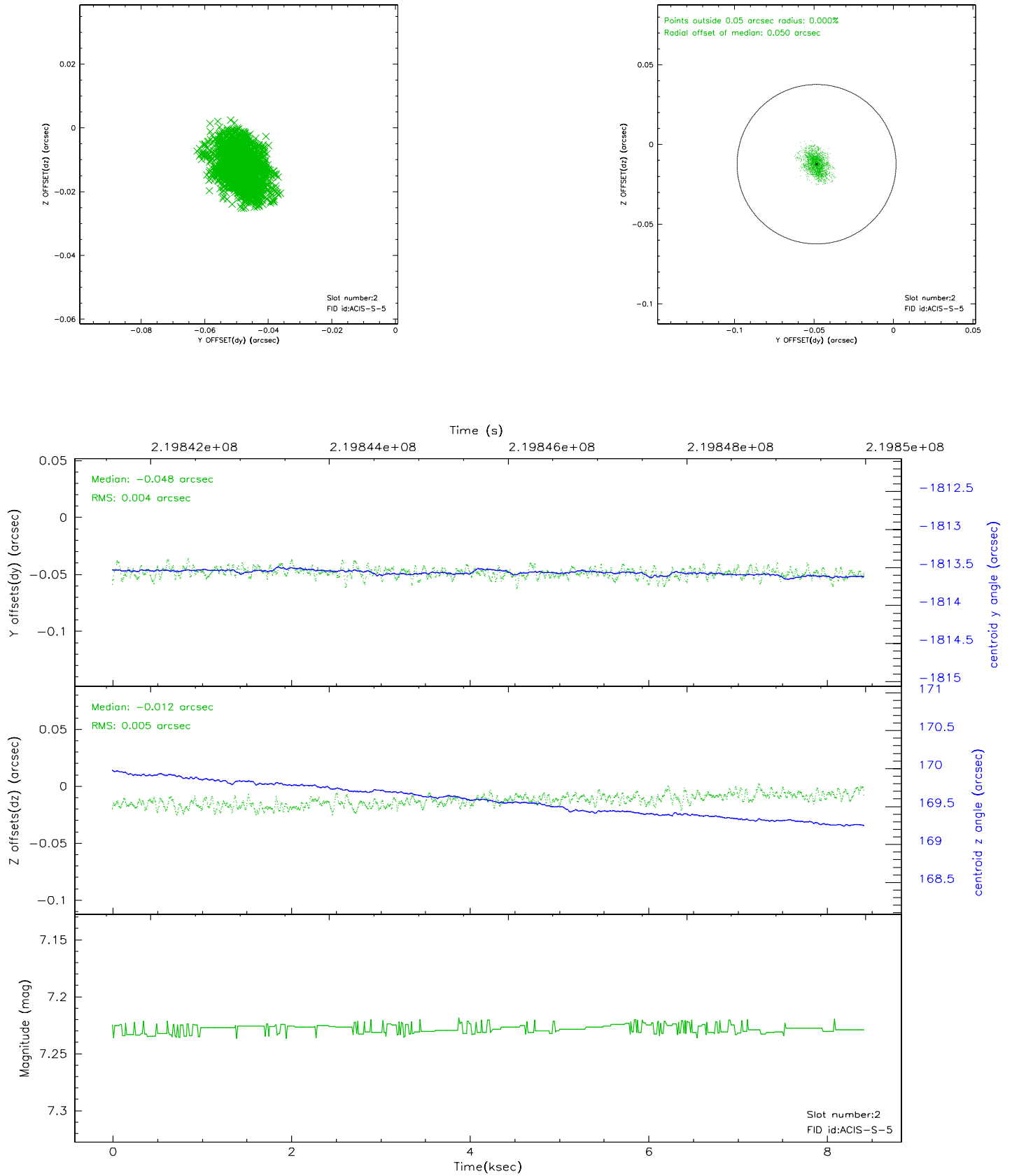
2.5.1 Slot 0



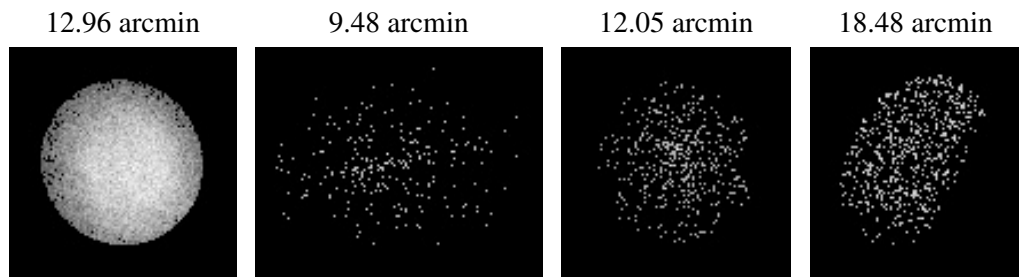
2.5.2 Slot 1



2.5.3 Slot 2



3 Point Sources



A Summary

A.1 Status

V&V Scientist	Beth Sundheim
V&V Date (YYYY-MM-DD)	2006.04.07
V&V Edition	1
V&V Disposition and Status	OK
V&V Charge Time	7.951999

A.2 Comments