

V&V Reference Report

L2 ASCDS Version : 7.6.7

Observation 6054 - L2 Version 002
Chandra X-Ray Center

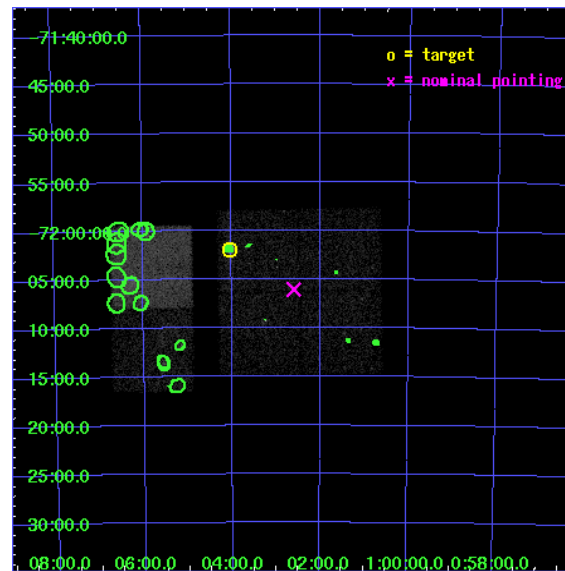
L2 Processing Date: Feb 16 2006

Contents

1	Front	2
2	OBI	3
2.1	OBI	3
2.1.1	Images	3
2.1.2	Bias	3
2.1.3	Parameters	4
2.1.4	Events	4
2.2	Compared Parameters	5
2.3	Aspect	6
2.4	Star Slots	9
2.4.1	Slot 3	9
2.4.2	Slot 4	10
2.4.3	Slot 5	11
2.4.4	Slot 6	12
2.4.5	Slot 7	13
2.5	FID Slots	14
2.5.1	Slot 0	14
2.5.2	Slot 1	15
2.5.3	Slot 2	16
3	Point Sources	17
A	Summary	18
A.1	Status	18
A.2	Comments	18

1 Front

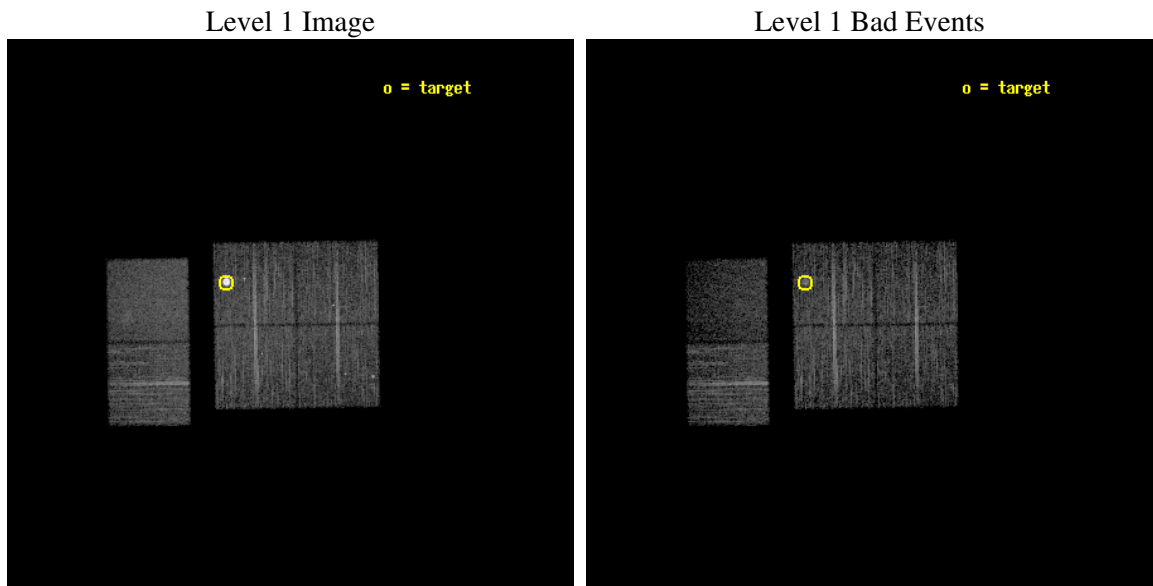
seq_num	590381
obs_id	6054
title	AO6A ACIS-I Calibration Observations of E0102-72
observer	Dr. CXC Calibration
object	E0102-72[I3,-120,-4.0,6.5,0]
dtcycle	0
cycle	P
ra_targ	16.01
dec_targ	-72.032028
ra_nom	15.648833296424
dec_nom	-72.101147726175
roll_nom	269.13622963627
revision	2
ontime	7257.5999729633
livetime	7165.6998721036
ontime0	7257.5999729633
ontime1	7257.5999729633
ontime2	7257.5999729633
ontime3	7257.5999729633
ontime6	7257.5999729633
ontime7	7257.5999729633
l2events	59381



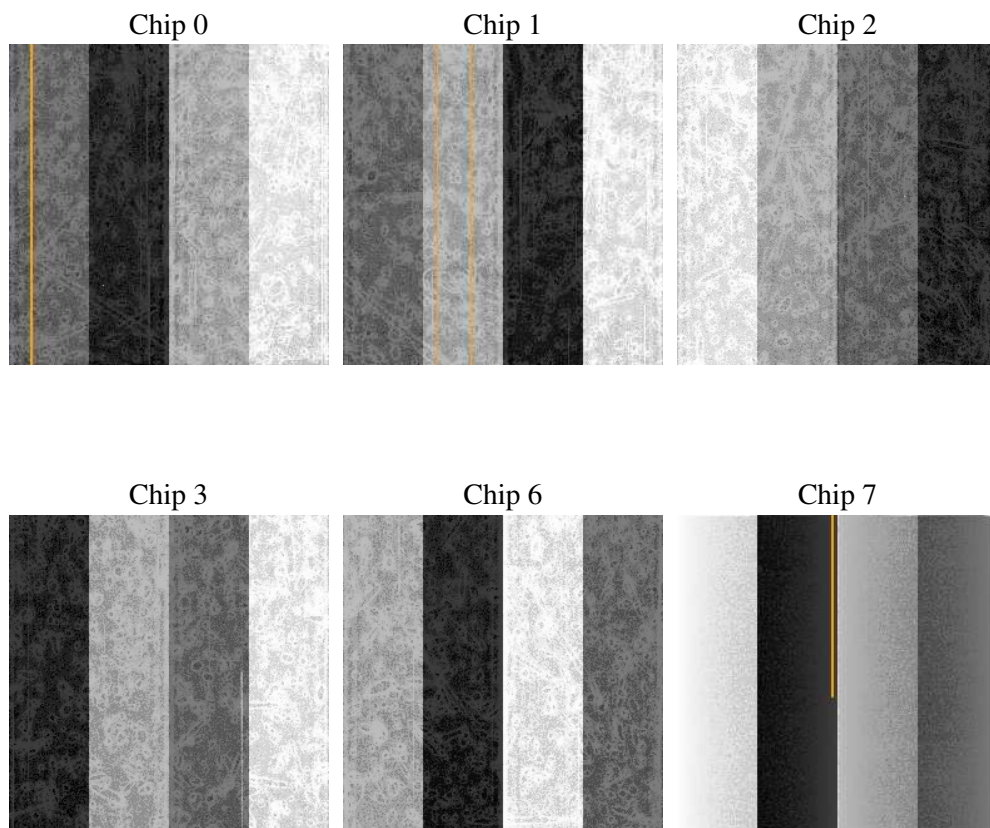
2 OBI

2.1 OBI

2.1.1 Images



2.1.2 Bias



2.1.3 Parameters

obi_num	1
ascdsver	7.6.7
caldbver	3.2.1
date	2006-02-16T17:30:55
revision	2

sched_exp_time	7500.000000
ontime	7263.0843074322
ontime0	7263.0843373239
ontime1	7263.0843373239
ontime2	7263.0843074322
ontime3	7263.0843074322
ontime6	7263.0843373239
ontime7	7263.0843373239
l1events	272181

2.1.4 Events

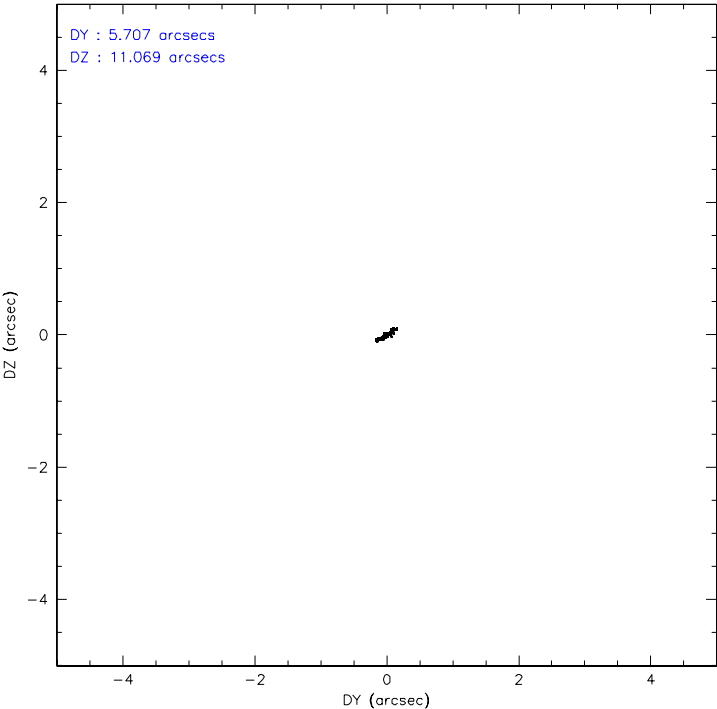
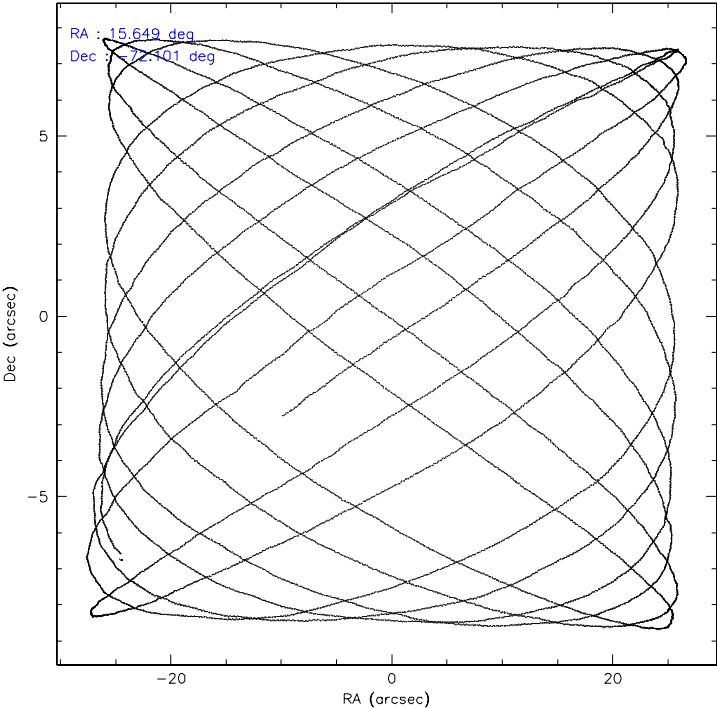
	ccd 0	ccd 1	ccd 2	ccd 3	ccd 6	ccd 7
level 1 events	38003	39375	45201	61932	44701	42969
rejected events	33126	34632	40451	38574	39584	21364
rejected %	87%	87%	89%	62%	88%	49%

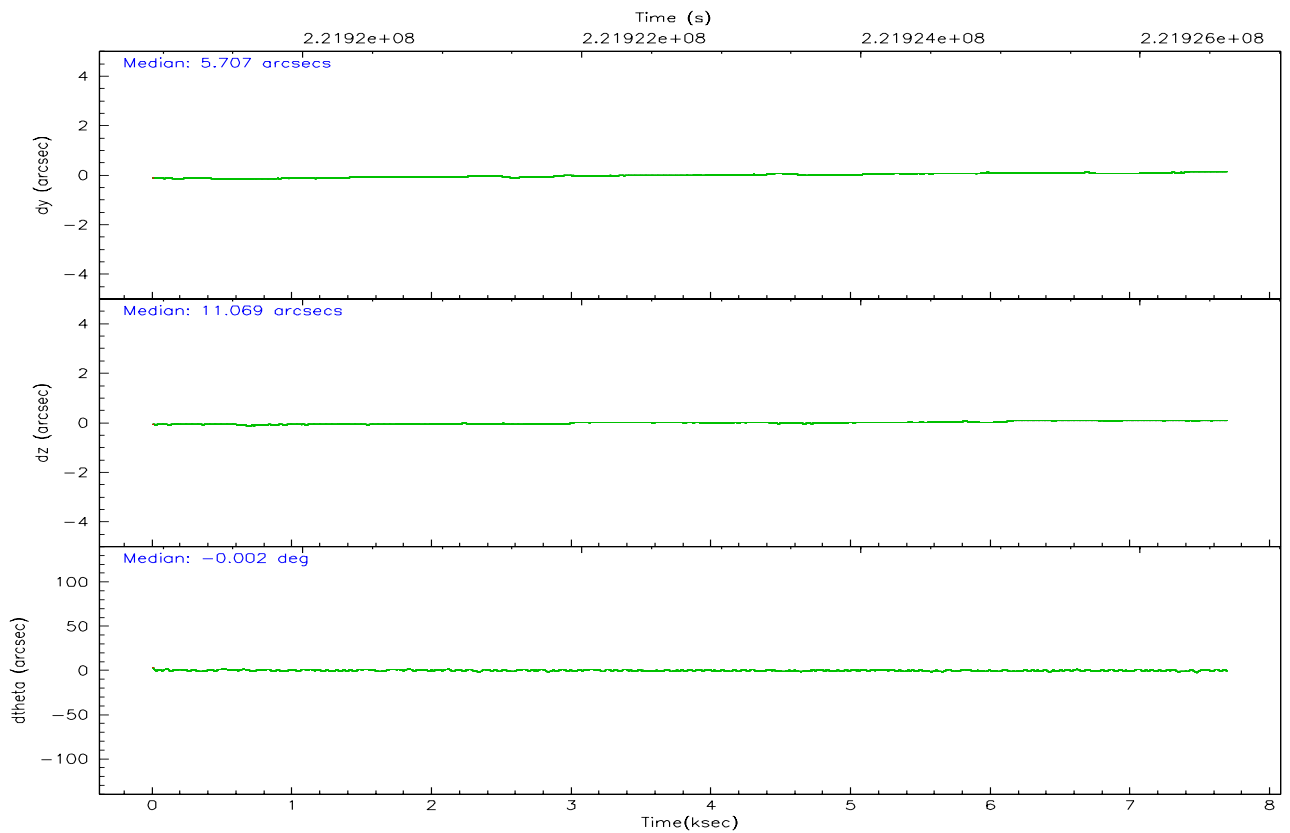
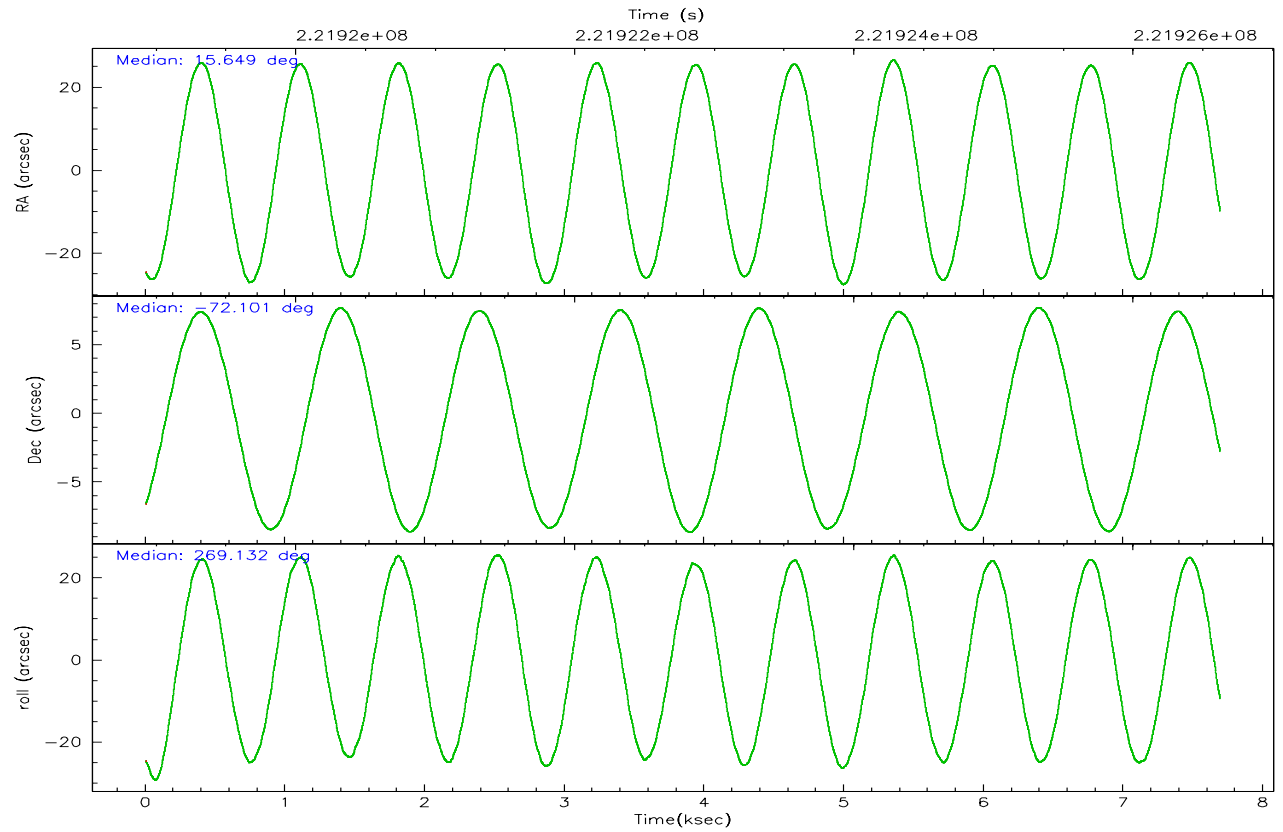
	ccd 0	ccd 1	ccd 2	ccd 3	ccd 6	ccd 7
grade 0 events	2139	1934	2177	18709	2459	1757
	5%	4%	4%	30%	5%	4%
grade 1 events	28	16	22	158	22	28
	0%	0%	0%	0%	0%	0%
grade 2 events	1090	972	993	2249	920	5370
	2%	2%	2%	3%	2%	12%
grade 3 events	501	544	431	783	489	1406
	1%	1%	0%	1%	1%	3%
grade 4 events	459	496	478	781	454	1324
	1%	1%	1%	1%	1%	3%
grade 5 events	1176	1376	1167	1510	1443	3191
	3%	3%	2%	2%	3%	7%
grade 6 events	693	817	678	859	802	11767
	1%	2%	1%	1%	1%	27%
grade 7 events	31917	33220	39255	36883	38112	18126
	83%	84%	86%	59%	85%	42%

2.2 Compared Parameters

Parameter	Planned	Actual	Parameter	Planned	Actual
Instrument	ACIS	ACIS	Obspar format version number	6	6
Detector	ACIS-012367	ACIS-012367	Obspar file type	PREDICTED	ACTUAL
Grating	NONE	NONE	Obspar update status	NONE	UPDATED
Data mode	VFAINT	VFAINT	On-chip summing requested	N	N
Observation mode	POINTING	POINTING	Subarray requested	NONE	NONE
Pointing RA	15.605112	15.64883329642424	Alternating exposures requested	N	N
Pointing Dec	-72.077365	-72.10114772617494	Primary exposure time	0.000000	3.2
Pointing Roll	268.885945	269.1362296362707			
Window start time	215654464.184000	215654464.184000			
Window stop time	223516864.184000	223516864.184000			
SIM focus pos (mm)	-0.782348	-0.7809083437167272			
SIM defocus (mm)	0	0.001439871863259334			
SIM translation stage pos (mm)	-233.592463	-233.5874344608287			
SIM translation stage offset (mm)	0	-0.005018542100998502			
Observation start time	221919124.184000	221918747.76931			
Observation start date	2005-01-12T12:11:00	2005-01-12T12:05:47			
Observation end time	221926624.184000	221927331.11969			
Observation end date	2005-01-12T14:16:00	2005-01-12T14:28:51			
Read mode	TIMED	TIMED			

2.3 Aspect



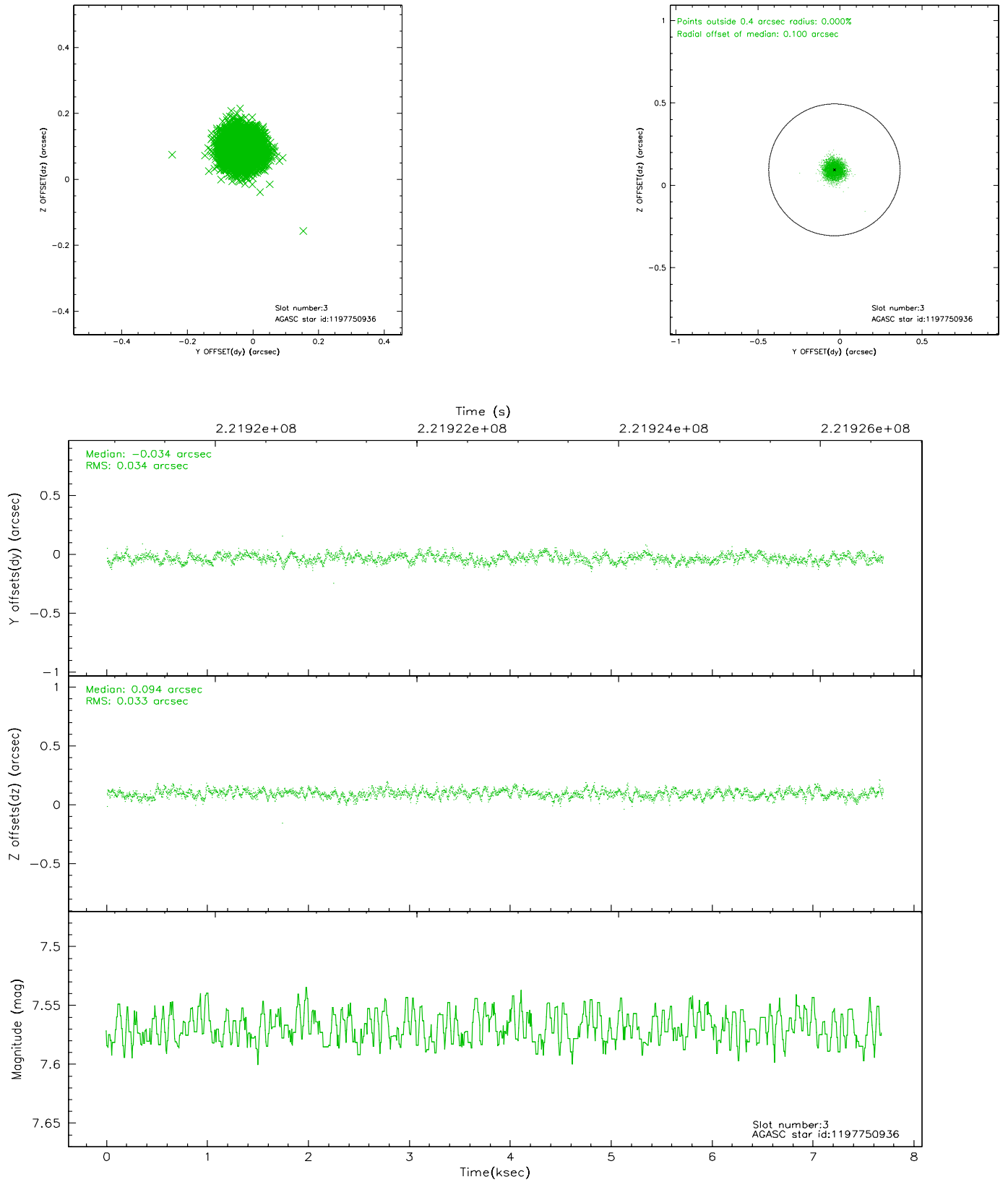


Slot Statistics

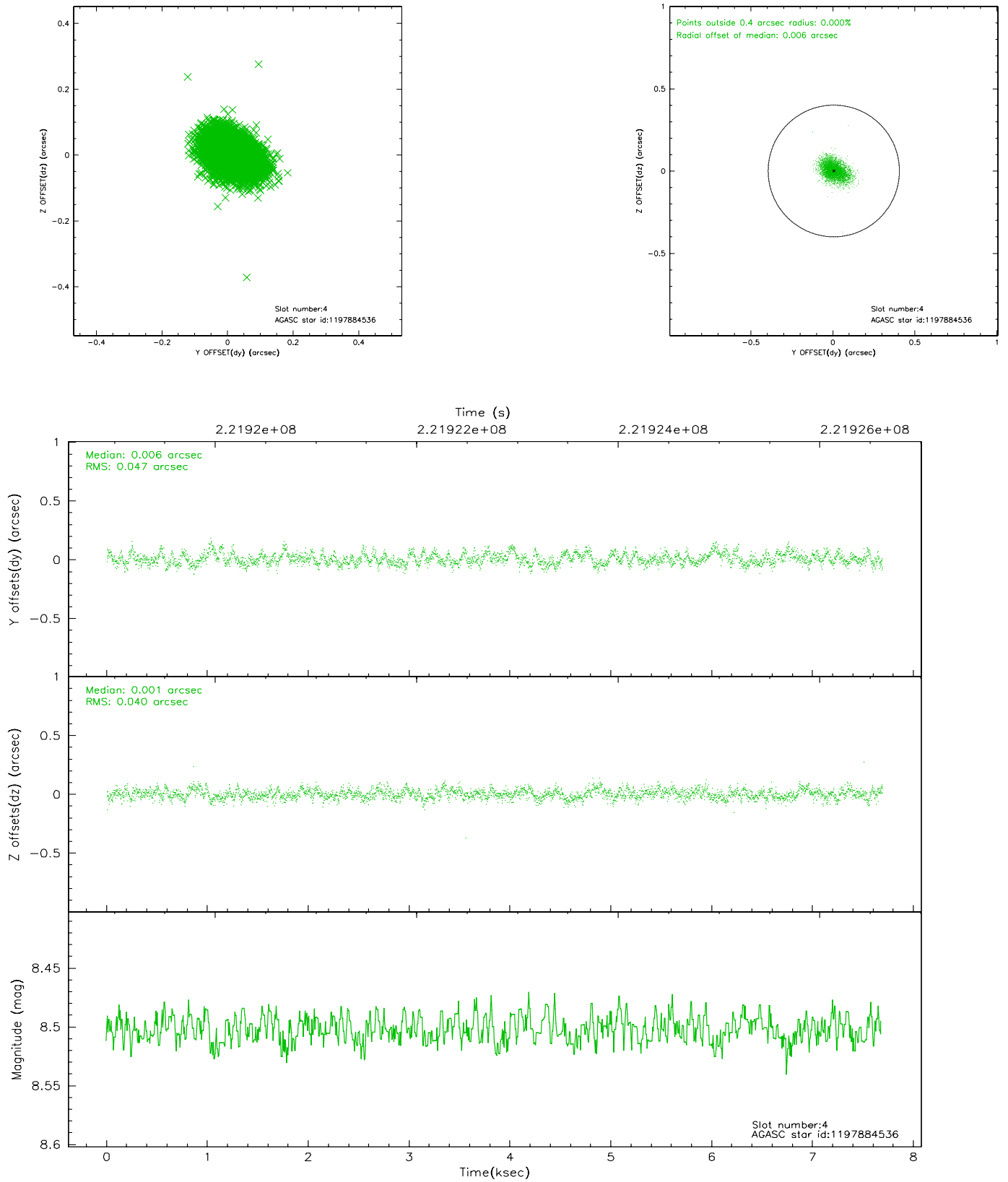
slot	status	id	mag	n_pts	med_dy	med_dz	dr1	dr2	ra	dec	mean_y	mean_z
0	FID	ACIS-I-2	7.13	1876	-0.060	-0.078	0.009	0.015	0.000000	0.000000	-760.21	-841.02
1	FID	ACIS-I-4	7.18	1876	0.057	0.061	0.005	0.009	0.000000	0.000000	2153.62	1064.94
2	FID	ACIS-I-5	7.22	1876	-0.098	0.086	0.009	0.015	0.000000	0.000000	-1813.14	1063.63
3	GUIDE	1197750936	7.57	3752	-0.034	0.094	0.051	0.078	15.387940	-71.549550	-1893.86	-284.30
4	GUIDE	1197884536	8.50	3752	0.006	0.001	0.065	0.107	17.160729	-71.835289	-882.88	1728.72
5	GUIDE	1197884712	8.30	3752	0.090	-0.112	0.064	0.102	16.087398	-72.252690	623.19	541.86
6	GUIDE	1197885328	7.23	3749	0.014	-0.095	0.052	0.083	16.283090	-71.733943	-1246.32	741.38
7	GUIDE	1198189696	7.38	3750	-0.079	0.111	0.047	0.076	15.223750	-72.697522	2241.51	-364.29

2.4 Star Slots

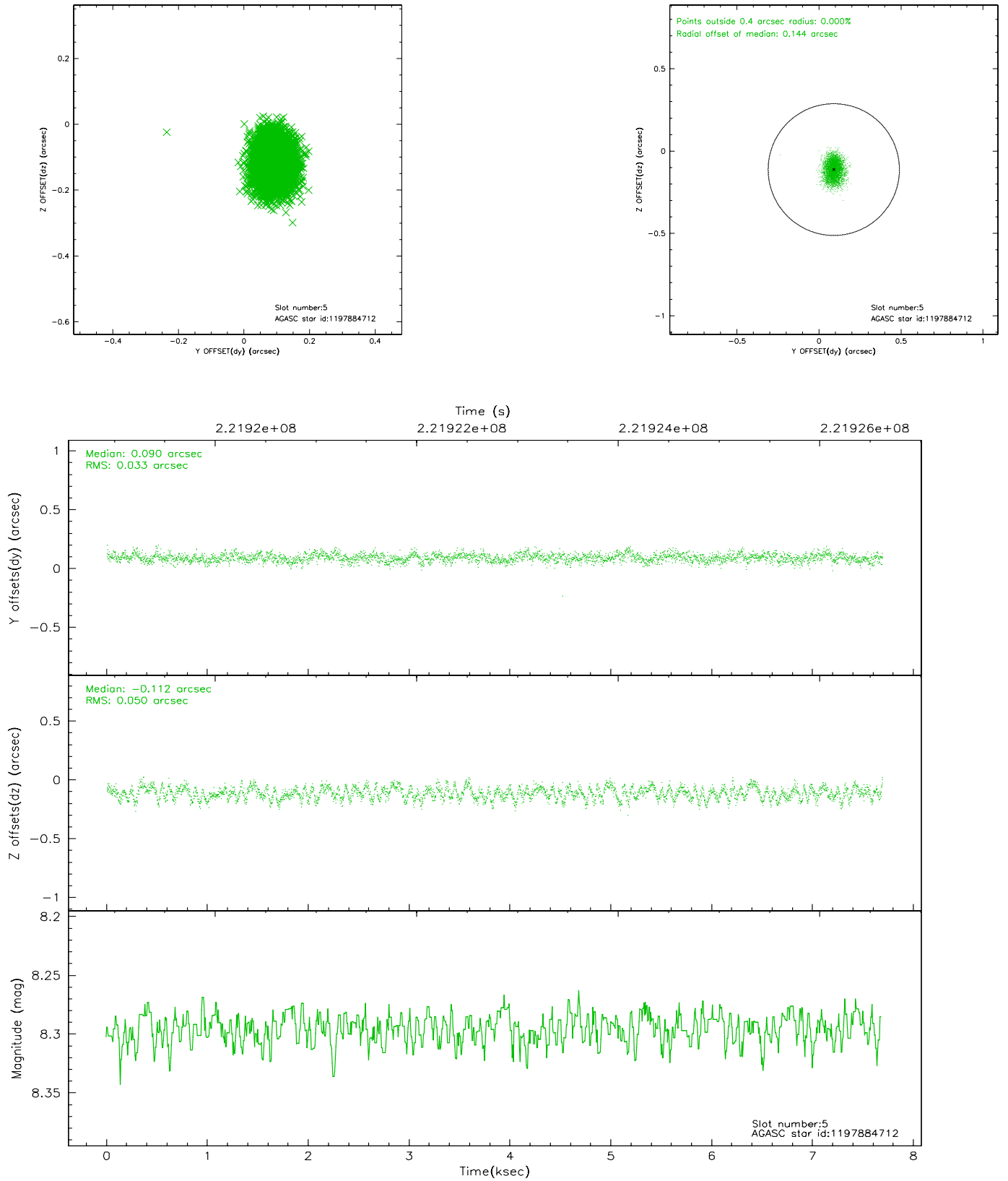
2.4.1 Slot 3



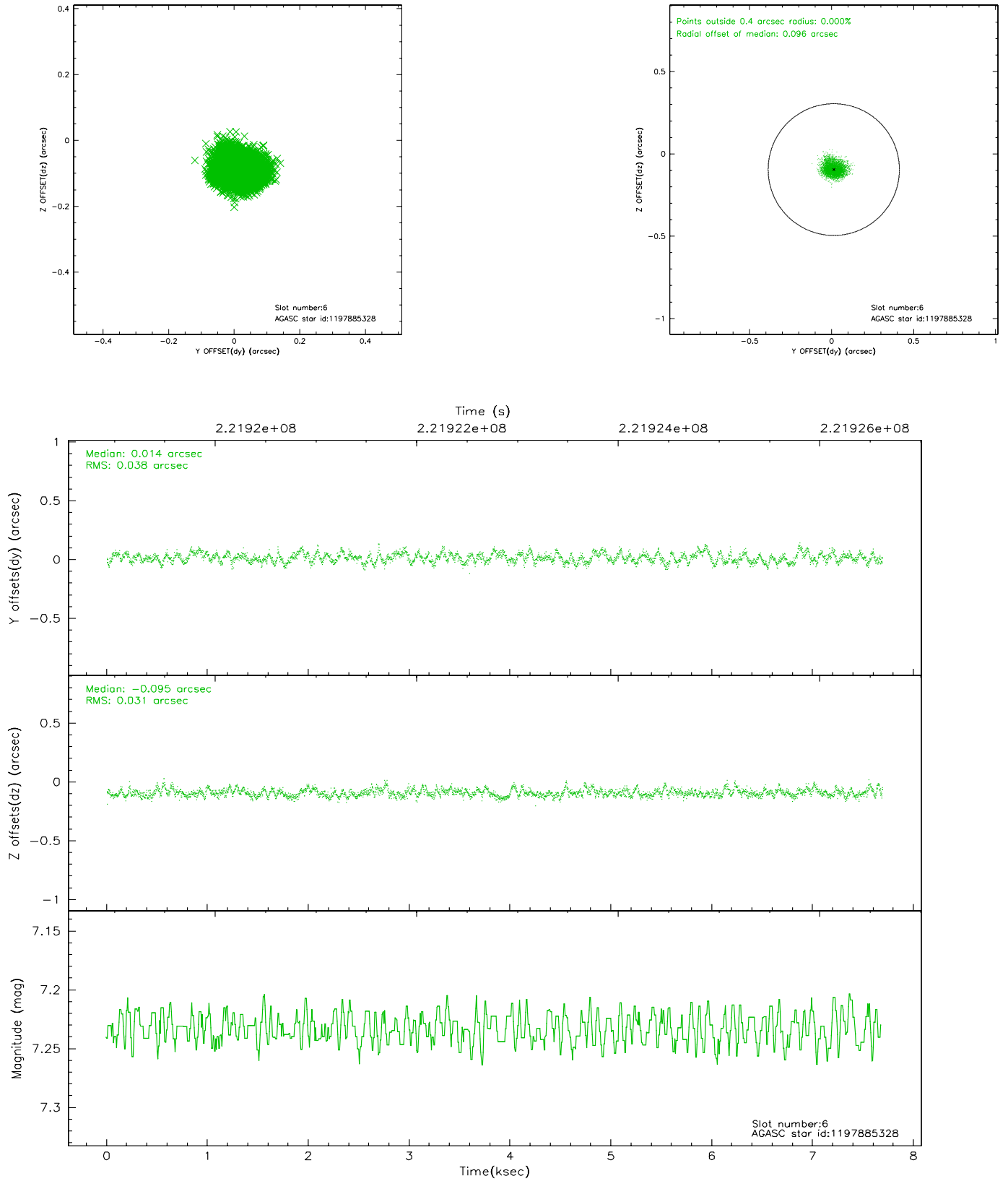
2.4.2 Slot 4



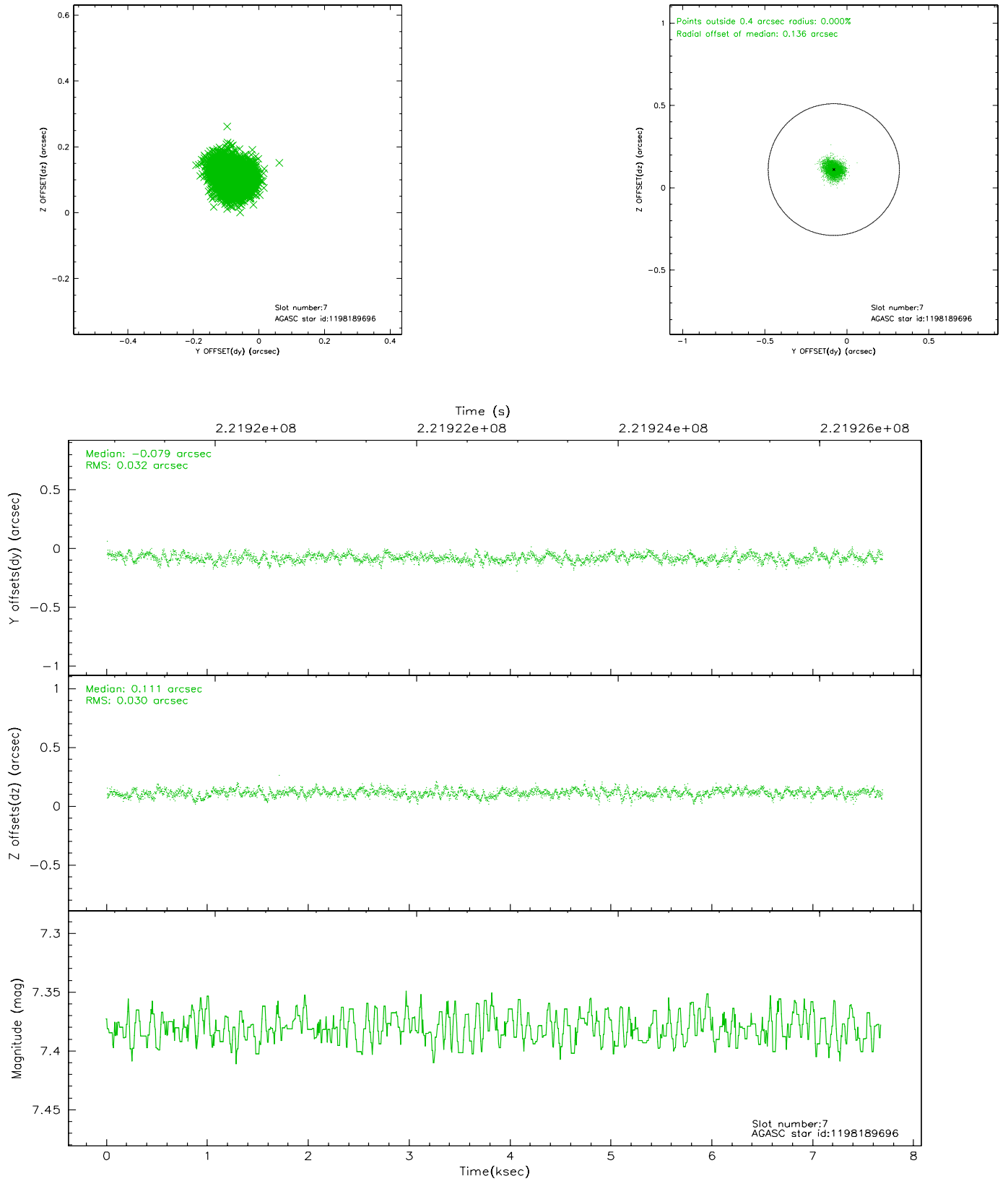
2.4.3 Slot 5



2.4.4 Slot 6

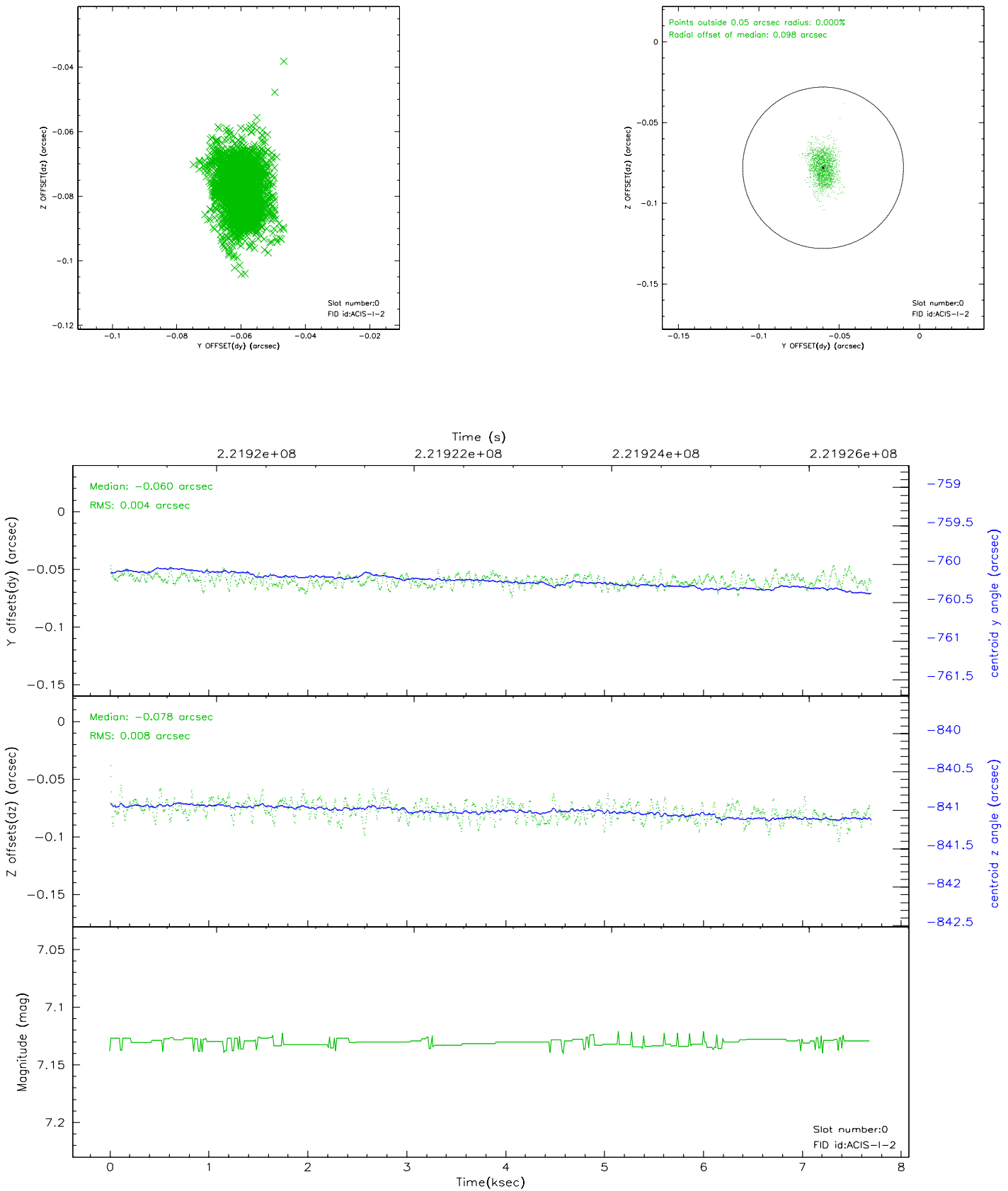


2.4.5 Slot 7

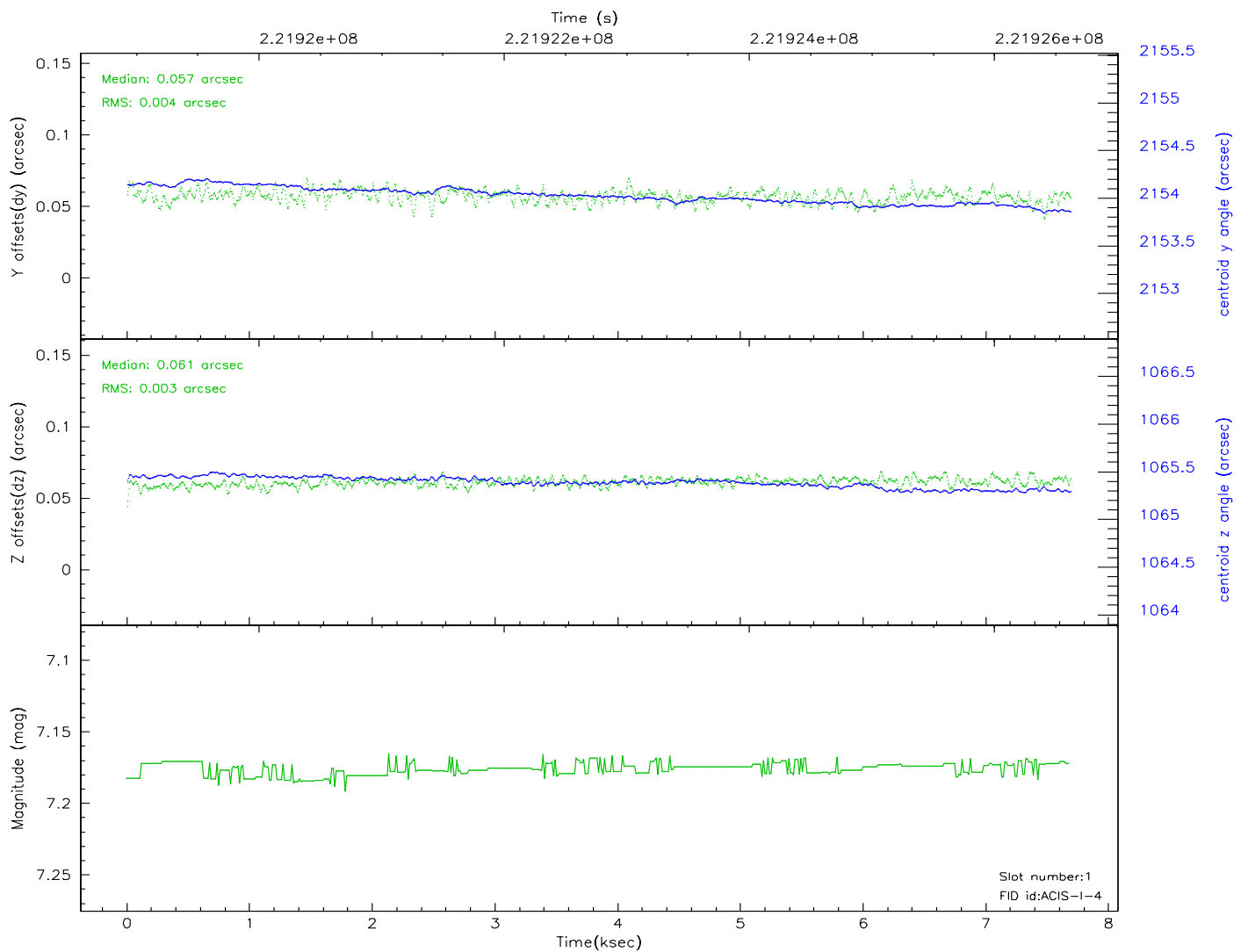
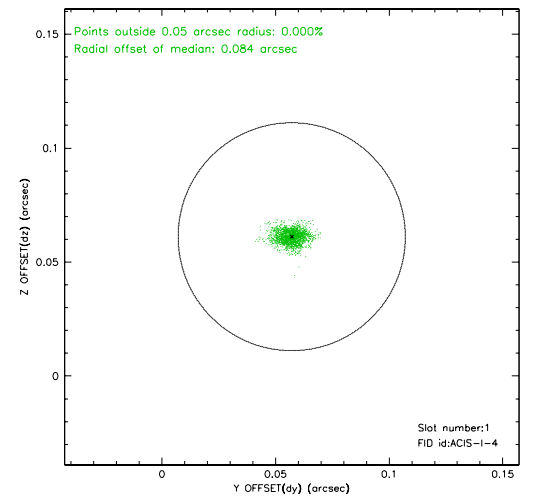
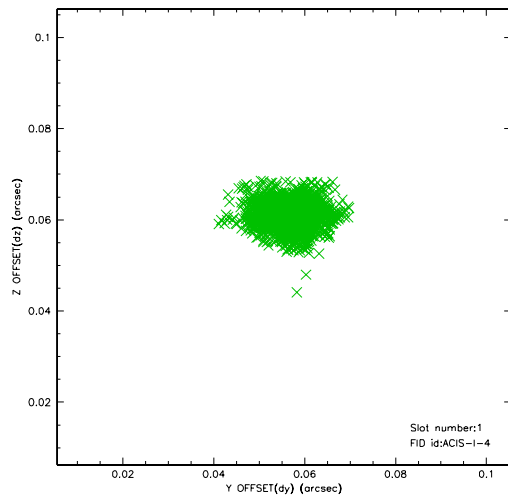


2.5 FID Slots

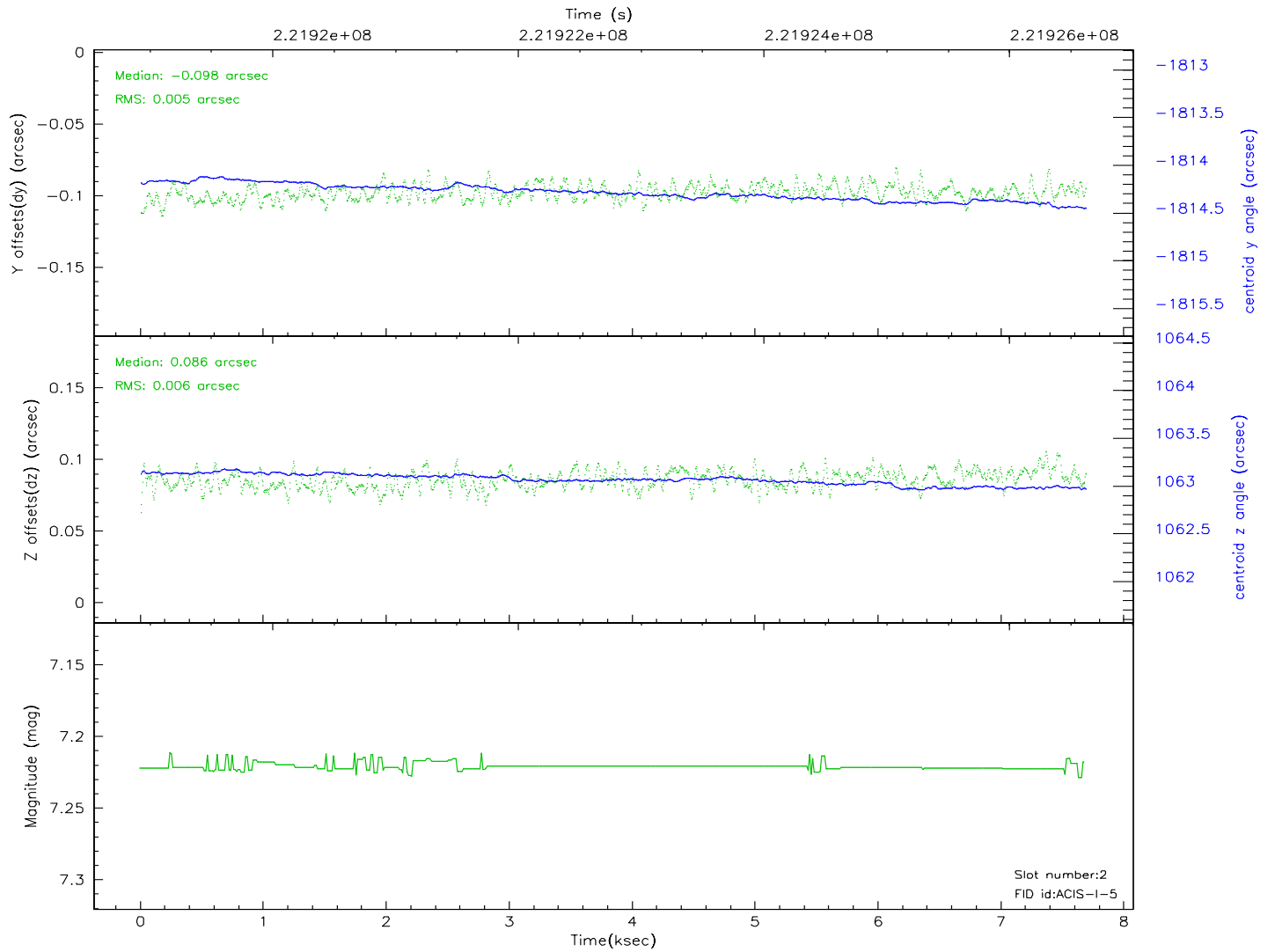
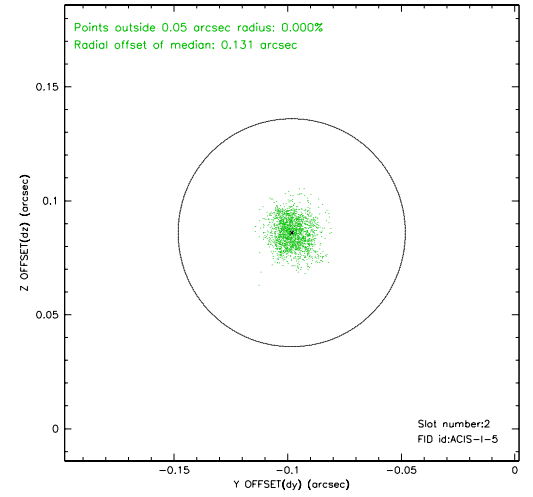
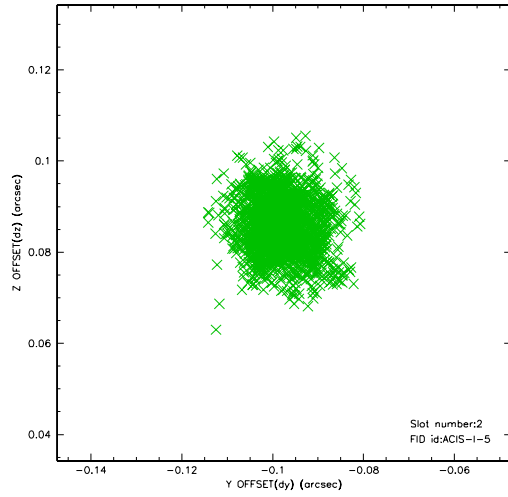
2.5.1 Slot 0



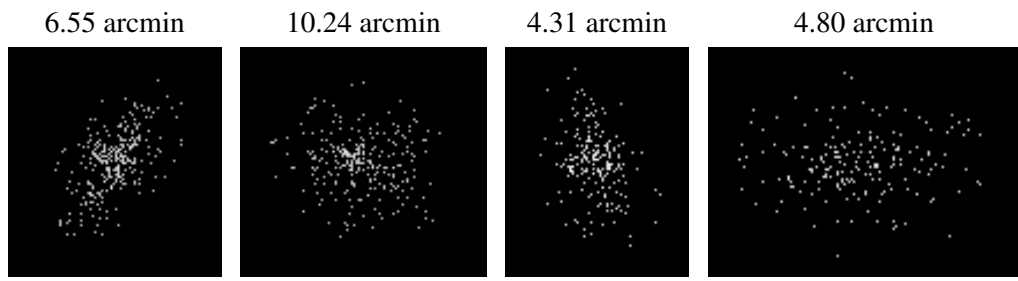
2.5.2 Slot 1



2.5.3 Slot 2



3 Point Sources



A Summary

A.1 Status

V&V Scientist	Beth Sundheim
V&V Date (YYYY-MM-DD)	2006.02.16
V&V Edition	1
V&V Disposition and Status	OK
V&V Charge Time	7.257599

A.2 Comments

Charge time:

Using existing charge time of 7.257599.