

V&V Reference Report

L2 ASCDS Version : 8.5.1

Observation 6053 - L2 Version 3
Chandra X-Ray Center

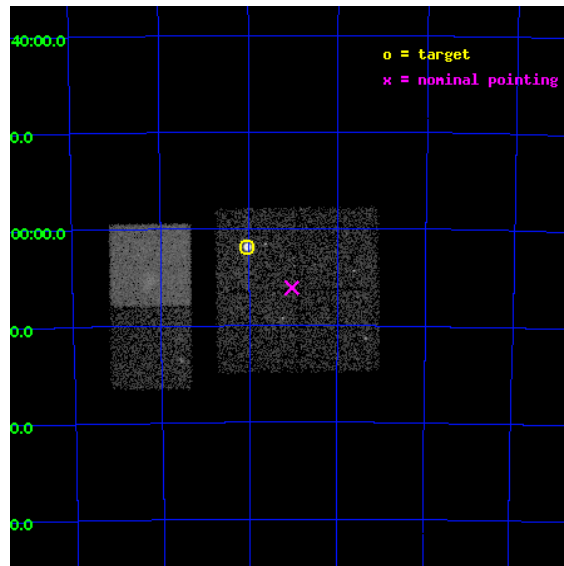
L2 Processing Date : Dec 16 2012

Contents

1	Front	2
2	OBI	3
2.1	OBI	3
2.1.1	Images	3
2.1.2	Bias	3
2.1.3	Parameters	4
2.1.4	Events	4
2.2	Compared Parameters	5
2.3	Aspect	6
2.4	Star Slots	9
2.4.1	Slot 3	9
2.4.2	Slot 4	10
2.4.3	Slot 5	11
2.4.4	Slot 6	12
2.4.5	Slot 7	13
2.5	FID Slots	14
2.5.1	Slot 0	14
2.5.2	Slot 1	15
2.5.3	Slot 2	16
A	Summary	17
A.1	Status	17
A.2	Comments	17

1 Front

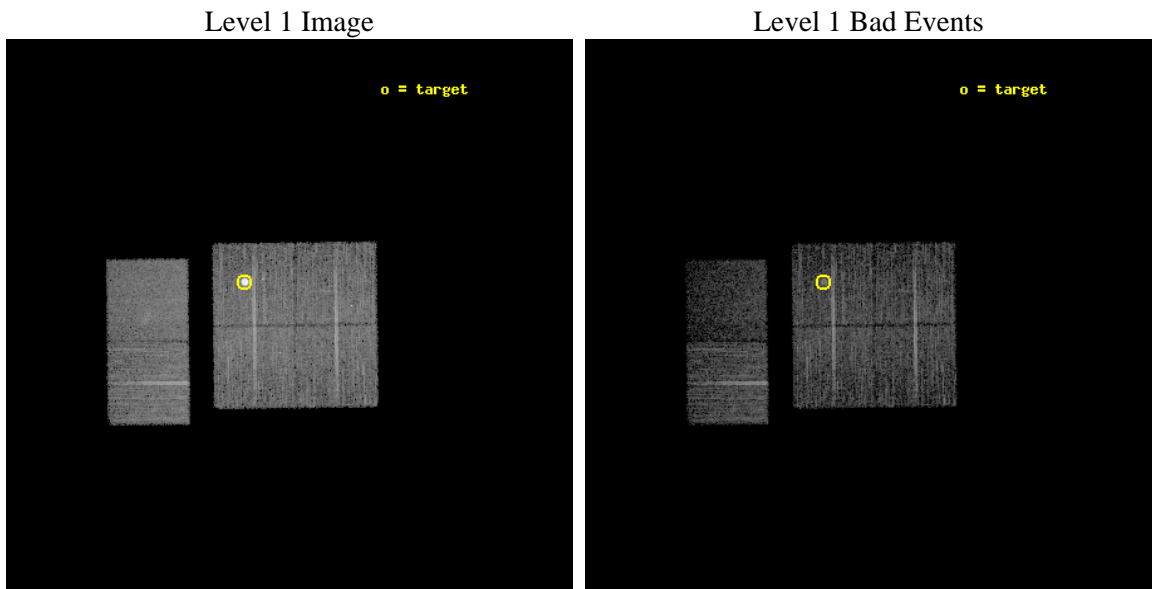
seq_num	590380	Sequence number
obs_id	6053	Observation id
title	AO6A ACIS-I Calibration Observations of E0102-72	Proposal title
observer	Dr. CXC Calibration	Principal investigator
object	E0102-72[I3,-120,-4.0,4.5,0]	Source name
dtcycle	0	
cycle	P	events from which exps? Prim/Second/Both
ra_targ	16.01	Observer's specified target RA [deg]
dec_targ	-72.032028	Observer's specified target Dec [deg]
ra_nom	15.757537103938	Nominal RA [deg]
dec_nom	-72.101906702914	Nominal Dec [deg]
roll_nom	269.34179574003	Nominal Roll [deg]
revision	3	Processing version of data
ontime	7254.2481284142	Sum of GTIs [s]
livetime	7162.3904706284	Livetime [s]
ontime0	7254.1250084341	Sum of GTIs [s]
ontime1	7254.1660484076	Sum of GTIs [s]
ontime2	7254.2070685029	Sum of GTIs [s]
ontime3	7254.2481284142	Sum of GTIs [s]
ontime6	7254.3301885128	Sum of GTIs [s]
ontime7	7254.2891485095	Sum of GTIs [s]
l2events	58604	Number of level 2 events



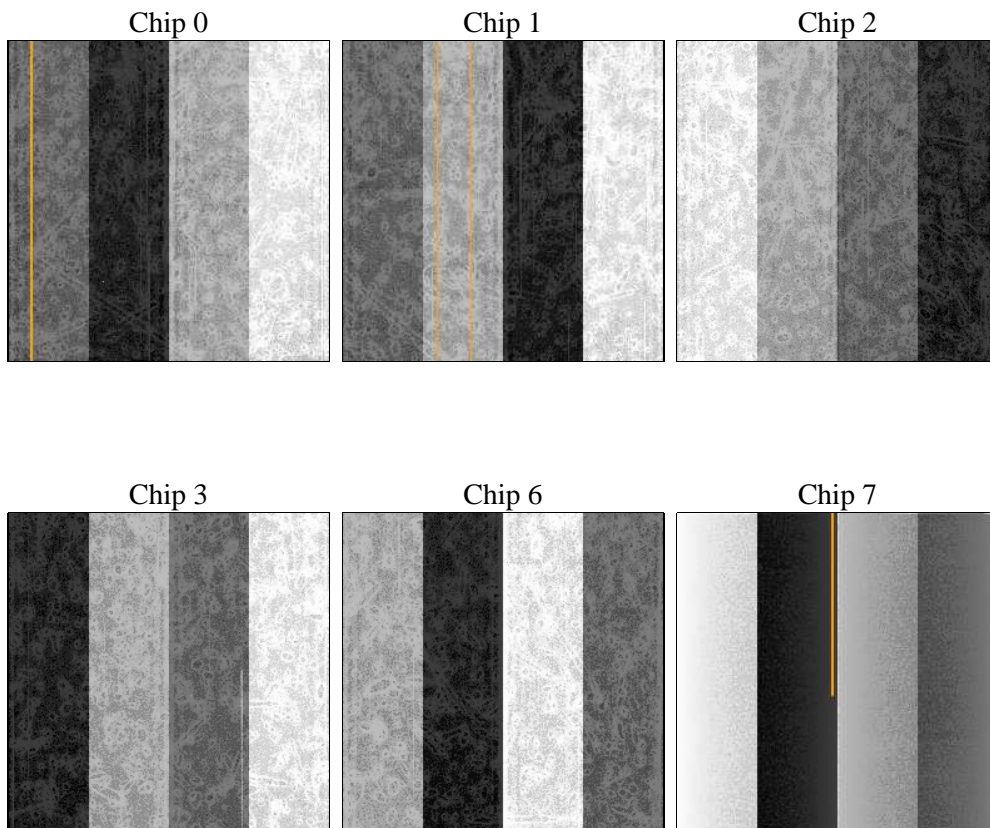
2 OBI

2.1 OBI

2.1.1 Images



2.1.2 Bias



2.1.3 Parameters

obi_num	1	Obi number	sched_exp_time	7500.000000	[s] Scheduled observation exposure time
ascdsver	8.5.1	Processing system revision	ontime	7254.2481284142	Sum of GTIs [s]
caldsver	4.5.5	 	ontime0	7254.1250084341	Sum of GTIs [s]
date	2012-12-15T22:41:24	Date and time of file creation	ontime1	7254.1660484076	Sum of GTIs [s]
revision	3	Processing version of data	ontime2	7254.2070685029	Sum of GTIs [s]
			ontime3	7254.2481284142	Sum of GTIs [s]
			ontime6	7254.3301885128	Sum of GTIs [s]
			ontime7	7254.2891485095	Sum of GTIs [s]
			l1events	267948	Number of level 1 events

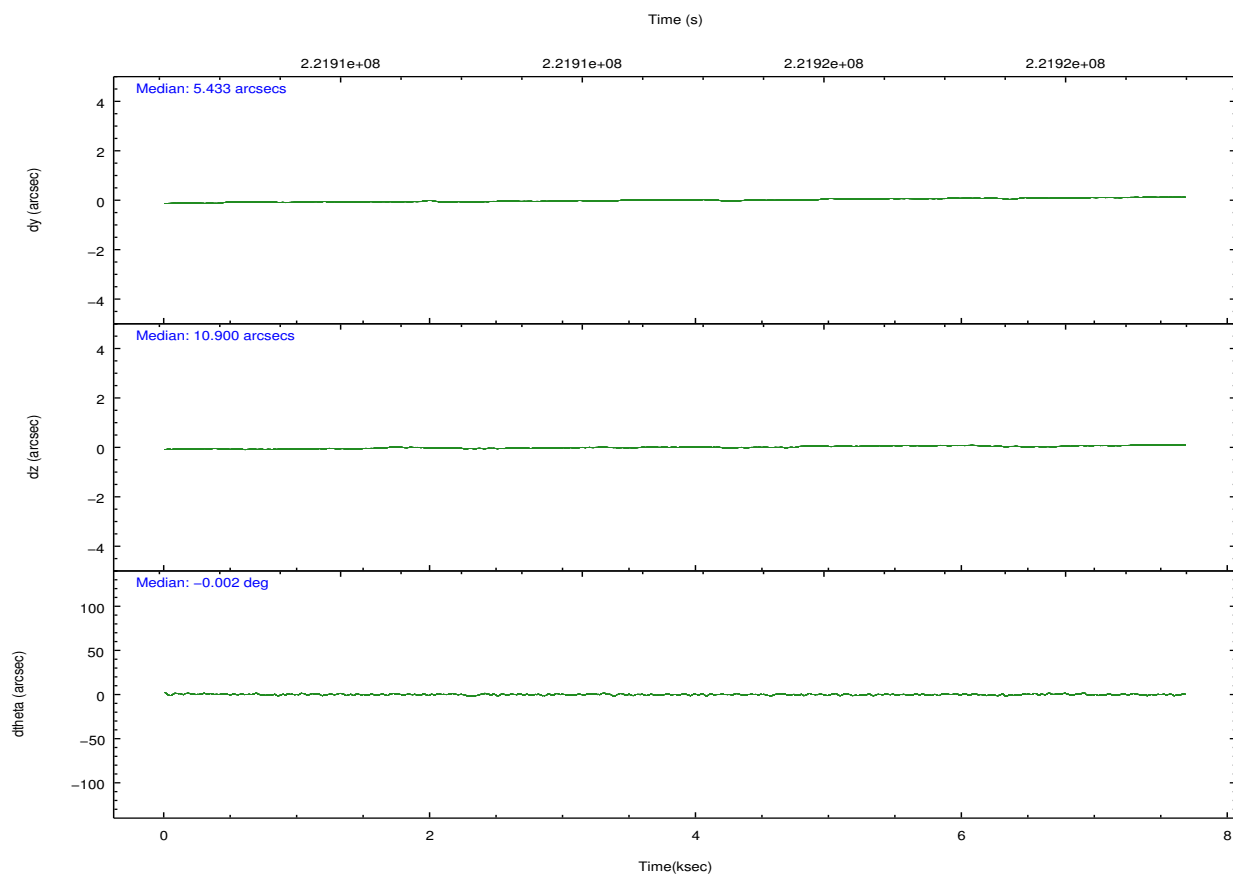
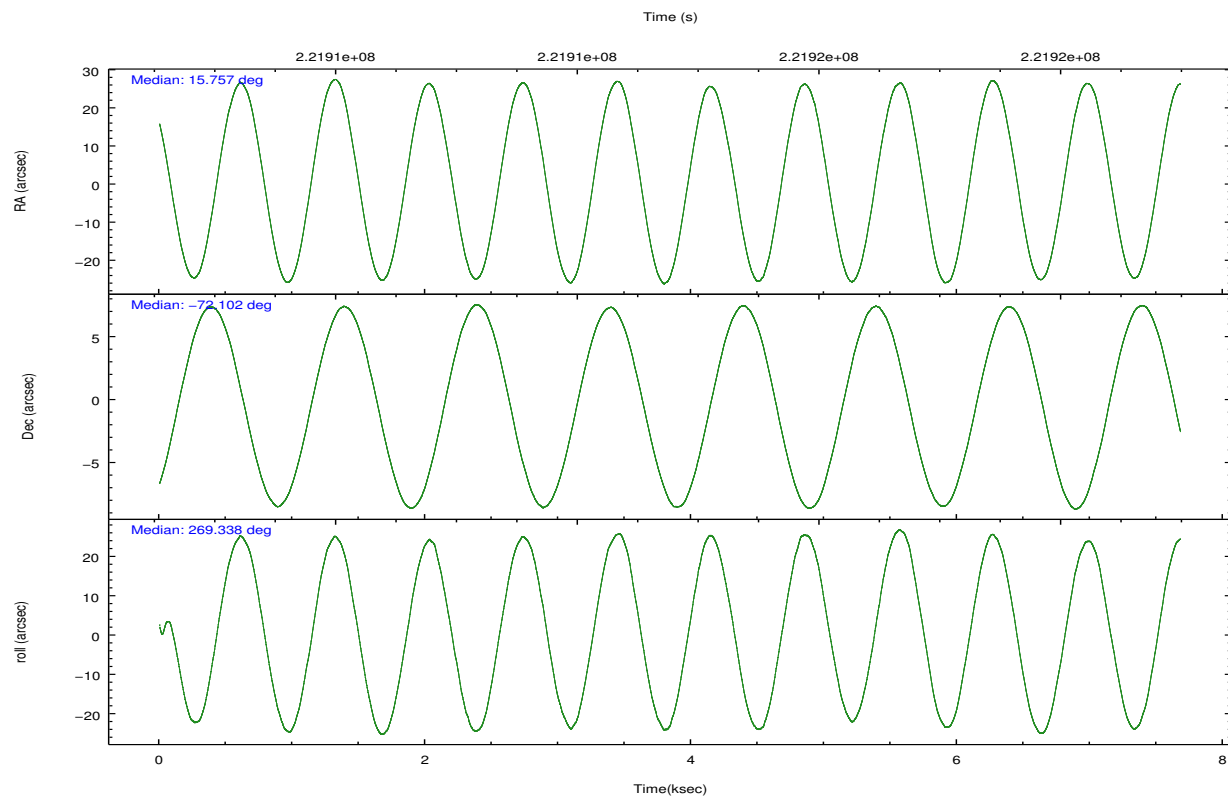
2.1.4 Events

	ccd 0	ccd 1	ccd 2	ccd 3	ccd 6	ccd 7		ccd 0	ccd 1	ccd 2	ccd 3	ccd 6	ccd 7
level 1 events	39505	39932	43247	62093	43584	39587	grade 0 events	1663	1755	1980	20733	1693	2153
rejected events	35115	35366	38677	36517	39154	19902		4%	4%	4%	33%	3%	5%
rejected %	88%	88%	89%	58%	89%	50%	grade 1 events	18	18	28	174	20	36
								0%	0%	0%	0%	0%	0%
							grade 2 events	1067	933	987	2311	923	4191
								2%	2%	2%	3%	2%	10%
							grade 3 events	453	505	417	876	466	1966
								1%	1%	0%	1%	1%	4%
							grade 4 events	437	513	450	850	457	1951
								1%	1%	1%	1%	1%	4%
							grade 5 events	1232	1311	1161	1389	1471	4252
								3%	3%	2%	2%	3%	10%
							grade 6 events	775	865	741	836	895	9440
								1%	2%	1%	1%	2%	23%
							grade 7 events	33860	34032	37483	34924	37659	15598
								85%	85%	86%	56%	86%	39%

2.2 Compared Parameters

Parameter	Planned	Actual	Parameter	Planned	Actual
Instrument	ACIS	ACIS	Obspar format version number	7	7
Detector	ACIS-012367	ACIS-012367	Obspar file type	PREDICTED	ACTUAL
Grating	NONE	NONE	Obspar update status	NONE	UPDATED
Data mode	VFAINT	VFAINT	Number of optional ACIS chips dropped	0	0
Observation mode	POINTING	POINTING	On-chip summing requested	N	N
[deg] Pointing RA	15.713702	15.75753710393806	Subarray requested	NONE	NONE
[deg] Pointing Dec	-72.078124	-72.10190670291385	Alternating exposures requested	N	N
[deg] Pointing Roll	269.091403	269.3417957400256	[s] Primary exposure time	0.000000	3.2
[s] Window start time (MET)	215654464.184000	215654464.184000			
[s] Window stop time (MET)	223516864.184000	223516864.184000			
[mm] SIM focus pos	-0.782348	-0.7809083437167272			
[mm] SIM defocus	0	0.001439871863259334			
[mm] SIM translation stage pos	-233.592463	-233.5874344608287			
[mm] SIM translation stage offset	0	-0.005018542100998502			
[s] Observation start time (MET)	221911114.184000	221910737.39394			
Observation start date	2005-01-12T09:57:30	2005-01-12T09:52:17			
[s] Observation end time (MET)	221918614.184000	221918747.76931			
Observation end date	2005-01-12T12:02:30	2005-01-12T12:05:47			
Read mode	TIMED	TIMED			

2.3 Aspect

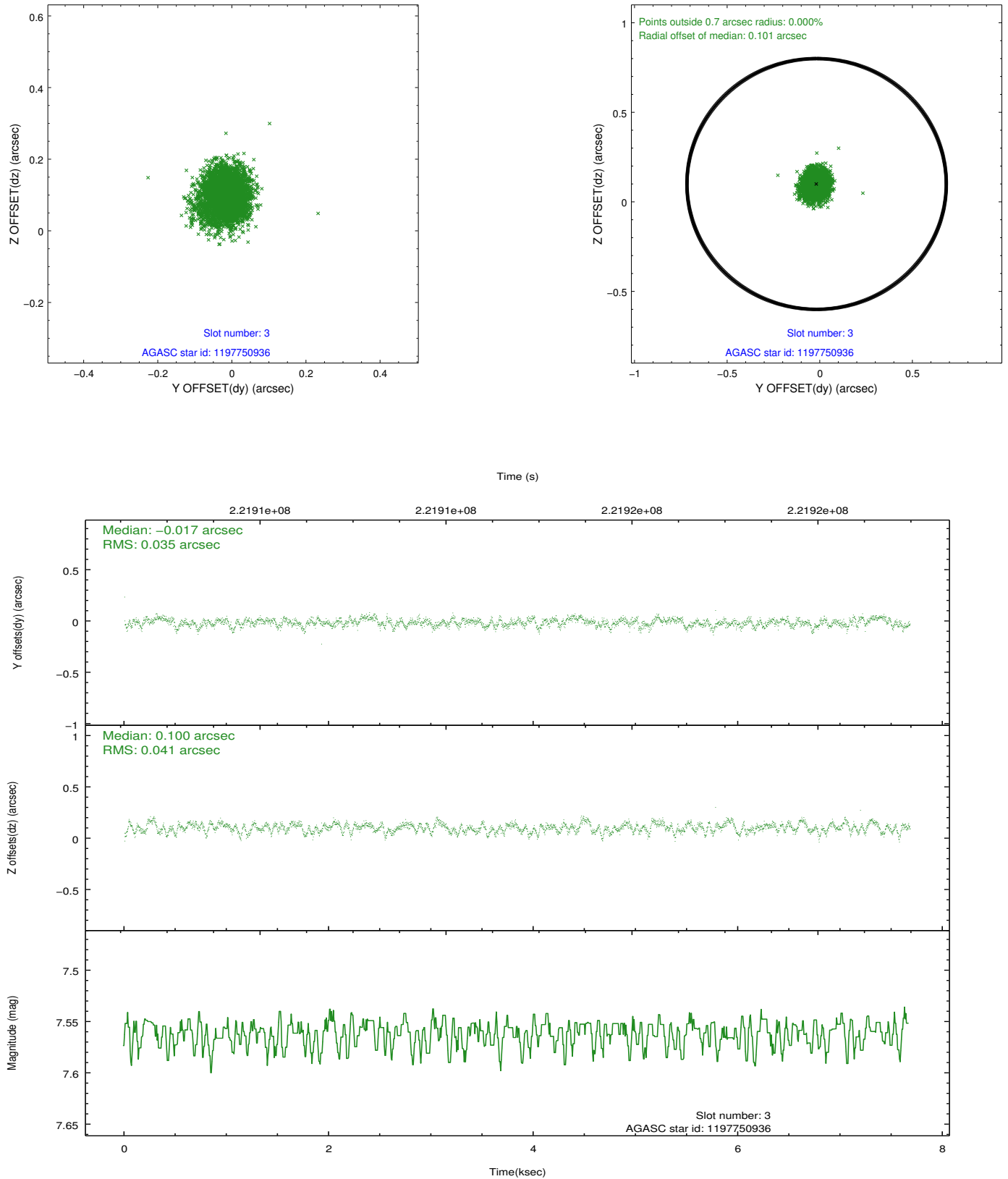


Slot Statistics

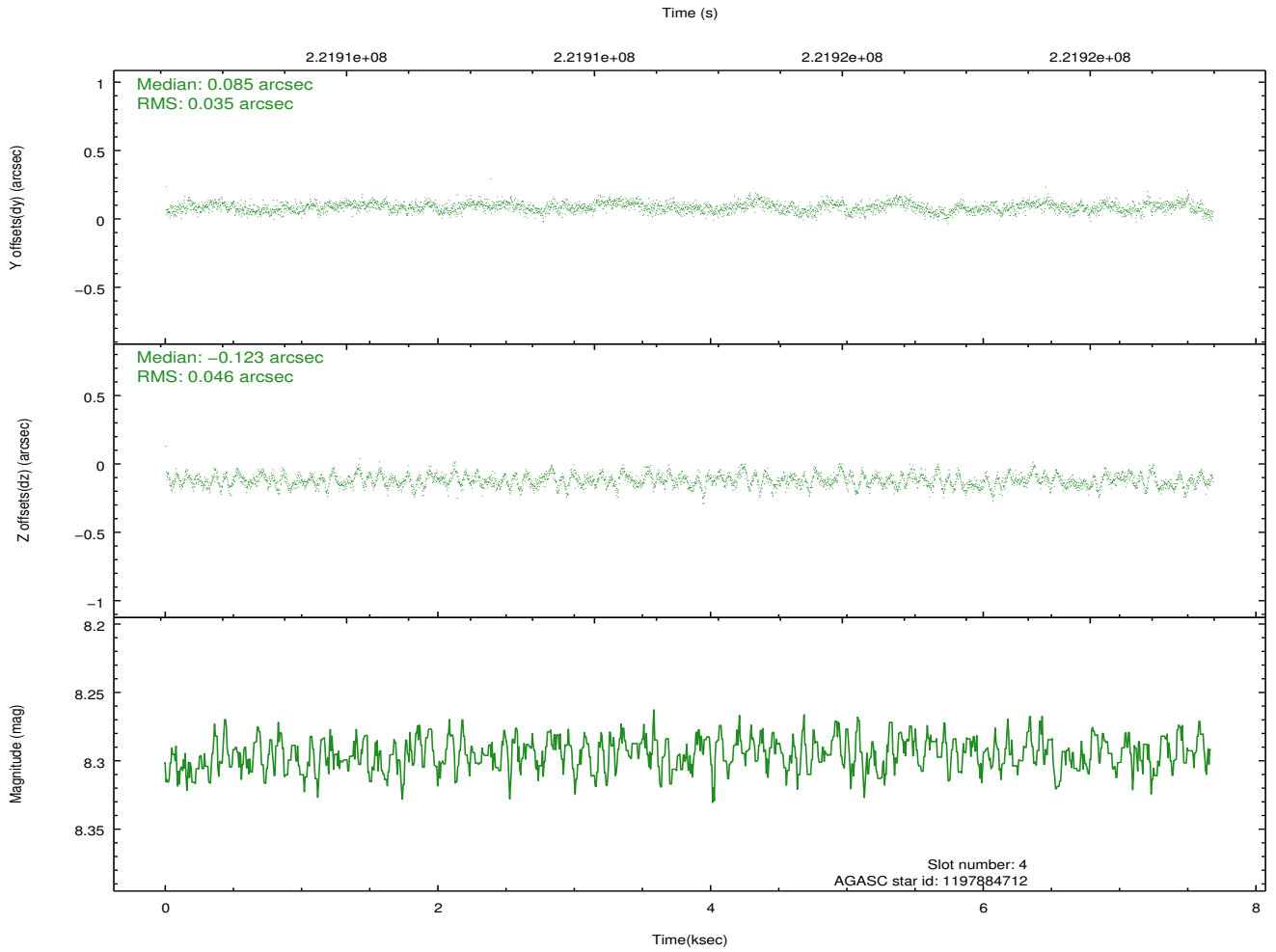
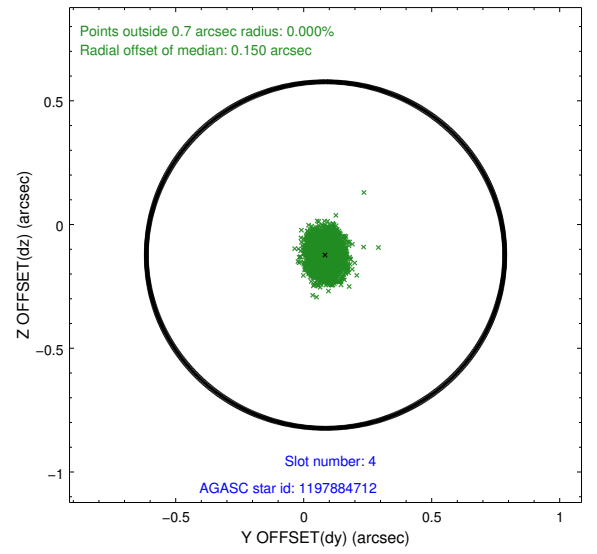
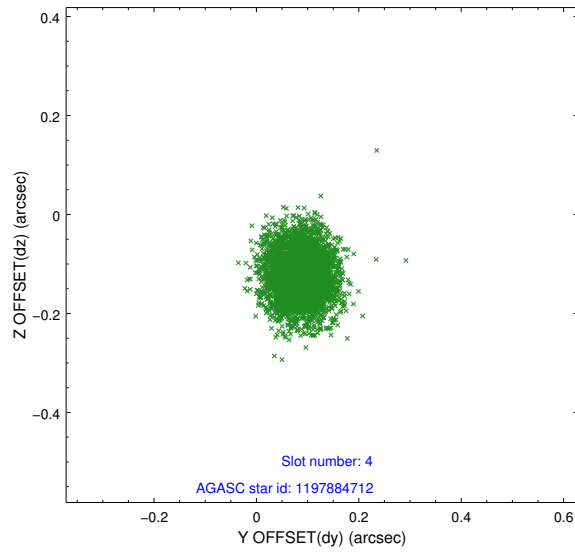
slot	status	id	mag	n_pts	med_dy	med_dz	dr1	dr2	ra	dec	mean_y	mean_z
0	FID	ACIS-I-2	7.14	1873	-0.065	-0.102	0.010	0.017	0.000000	0.000000	-759.94	-840.87
1	FID	ACIS-I-4	7.18	1873	0.101	0.070	0.006	0.010	0.000000	0.000000	2153.94	1065.12
2	FID	ACIS-I-5	7.22	1873	-0.137	0.101	0.010	0.016	0.000000	0.000000	-1812.90	1063.82
3	GUIDE	1197750936	7.56	3744	-0.017	0.100	0.058	0.092	15.387940	-71.549550	-1895.12	-401.01
4	GUIDE	1197884712	8.30	3747	0.085	-0.123	0.060	0.100	16.087398	-72.252690	623.12	420.07
5	GUIDE	1197885104	9.35	3729	0.031	-0.062	0.127	0.195	17.845067	-72.189368	405.55	2353.30
6	GUIDE	1197885328	7.22	3677	-0.017	-0.072	0.068	0.103	16.283090	-71.733943	-1245.76	623.98
7	GUIDE	1198189696	7.38	3746	-0.080	0.155	0.051	0.080	15.223750	-72.697522	2240.10	-488.37

2.4 Star Slots

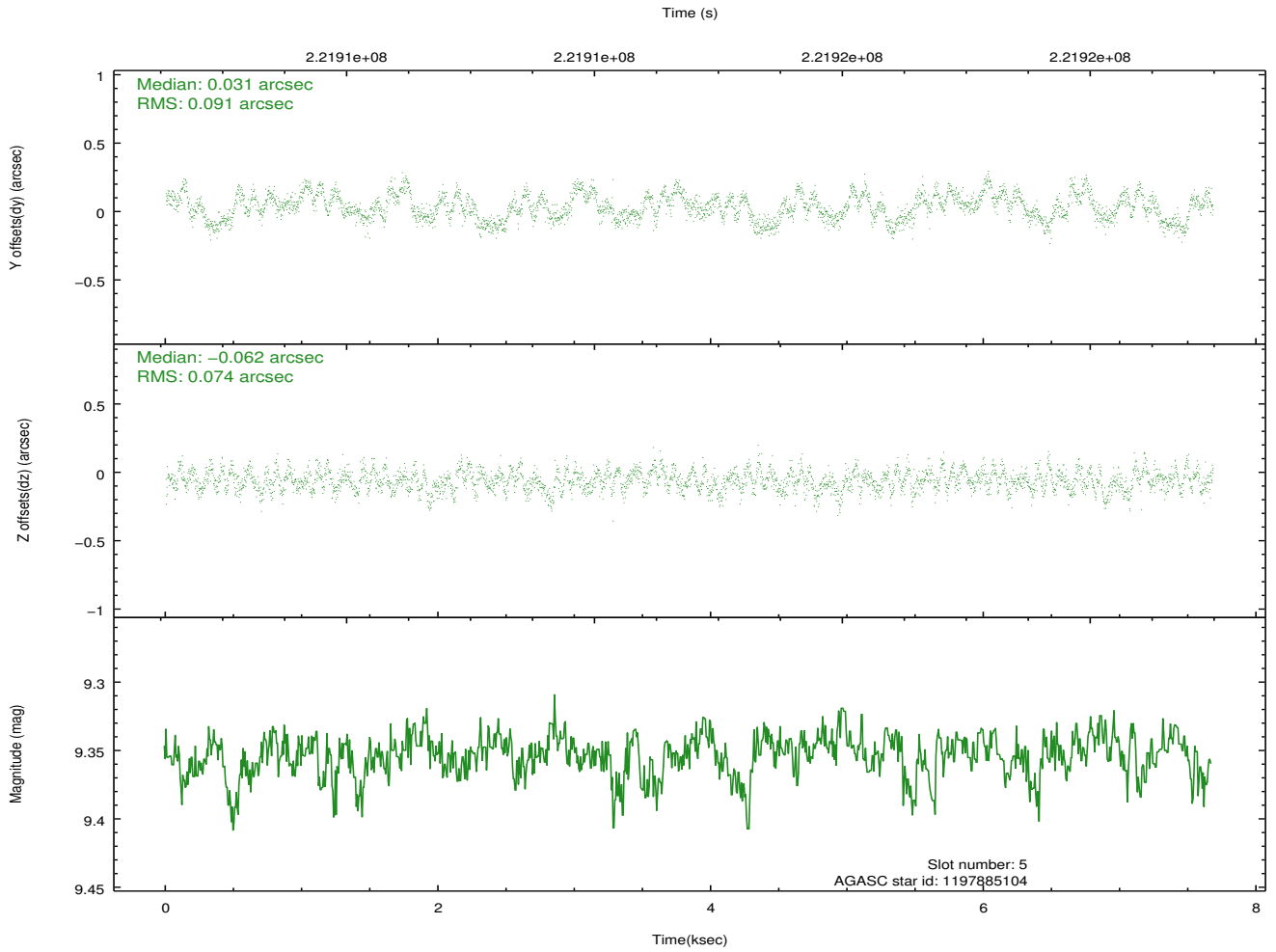
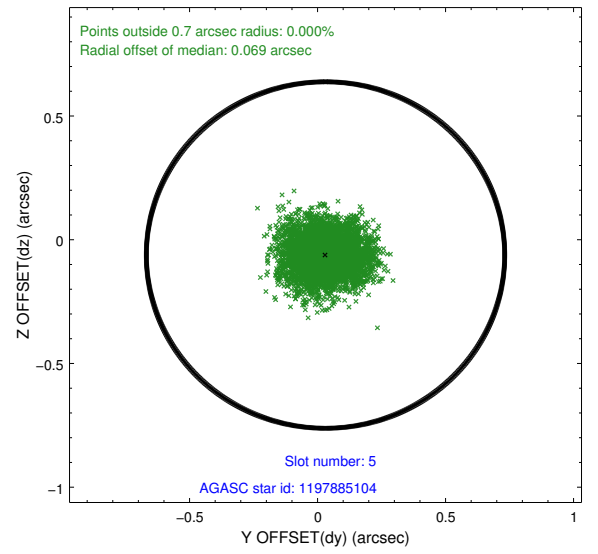
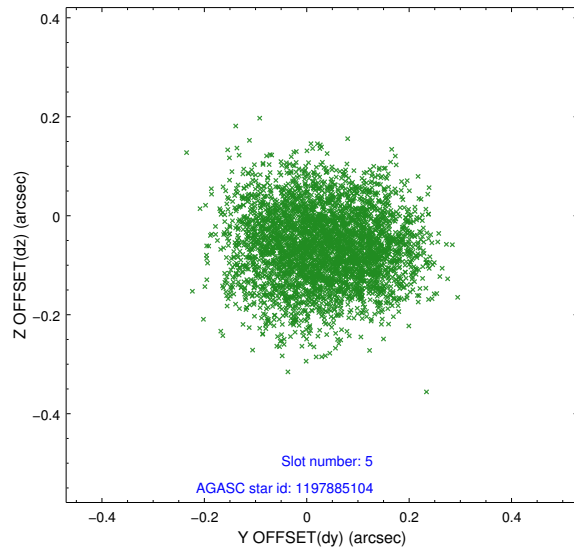
2.4.1 Slot 3



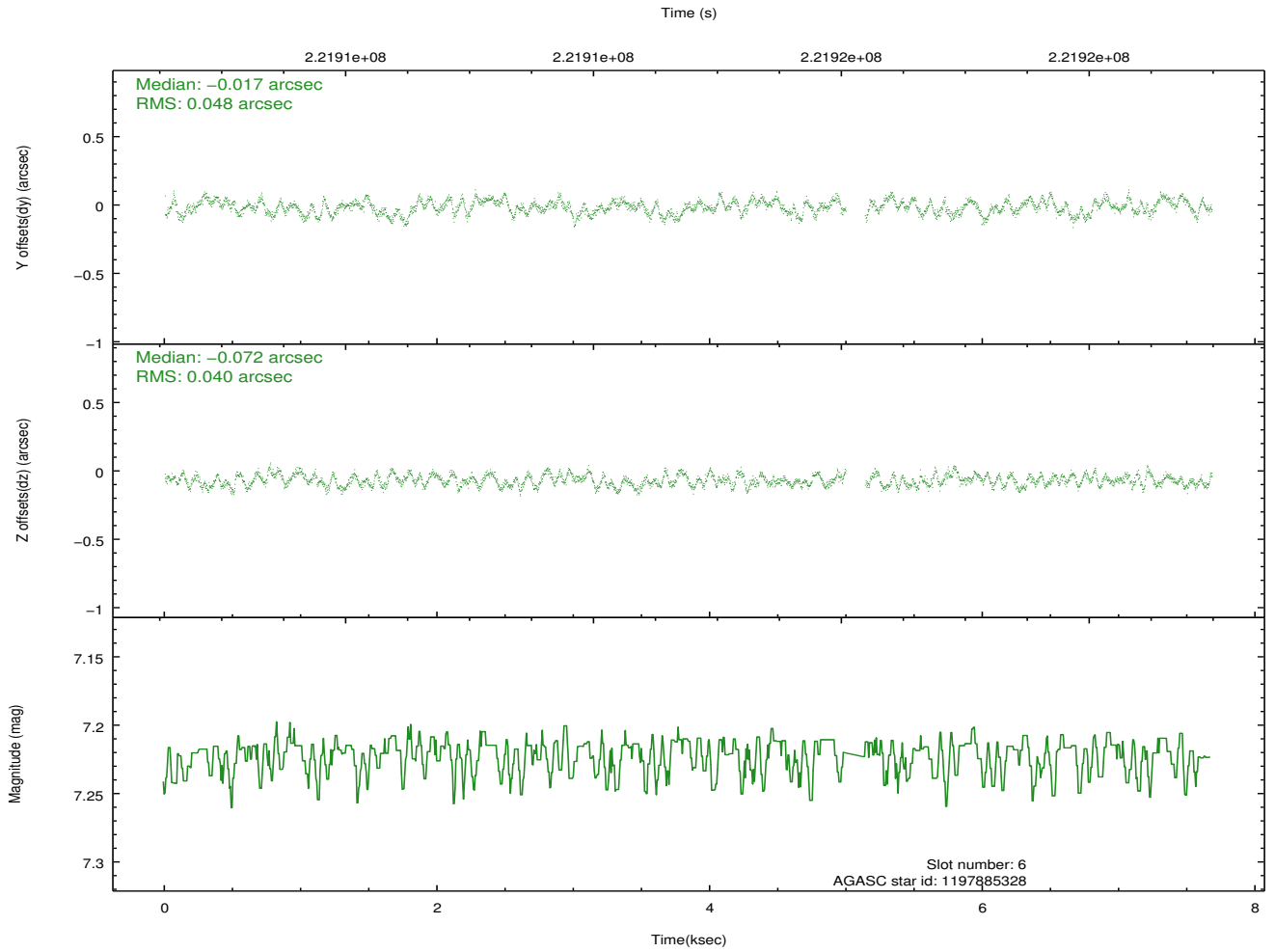
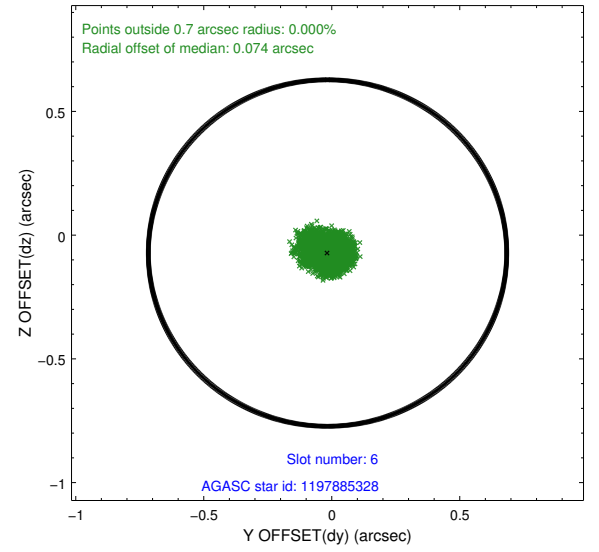
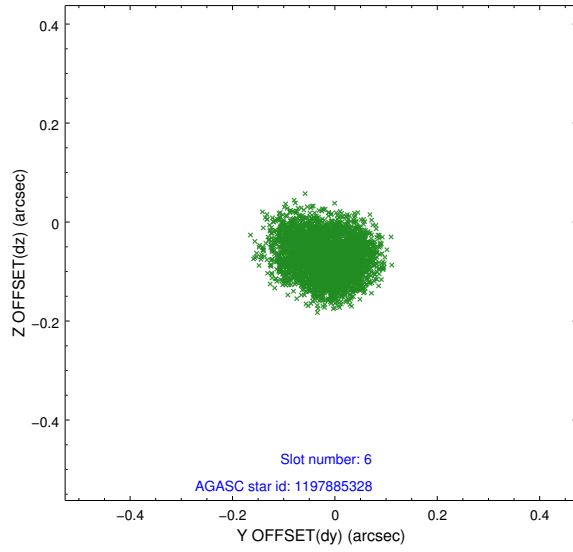
2.4.2 Slot 4



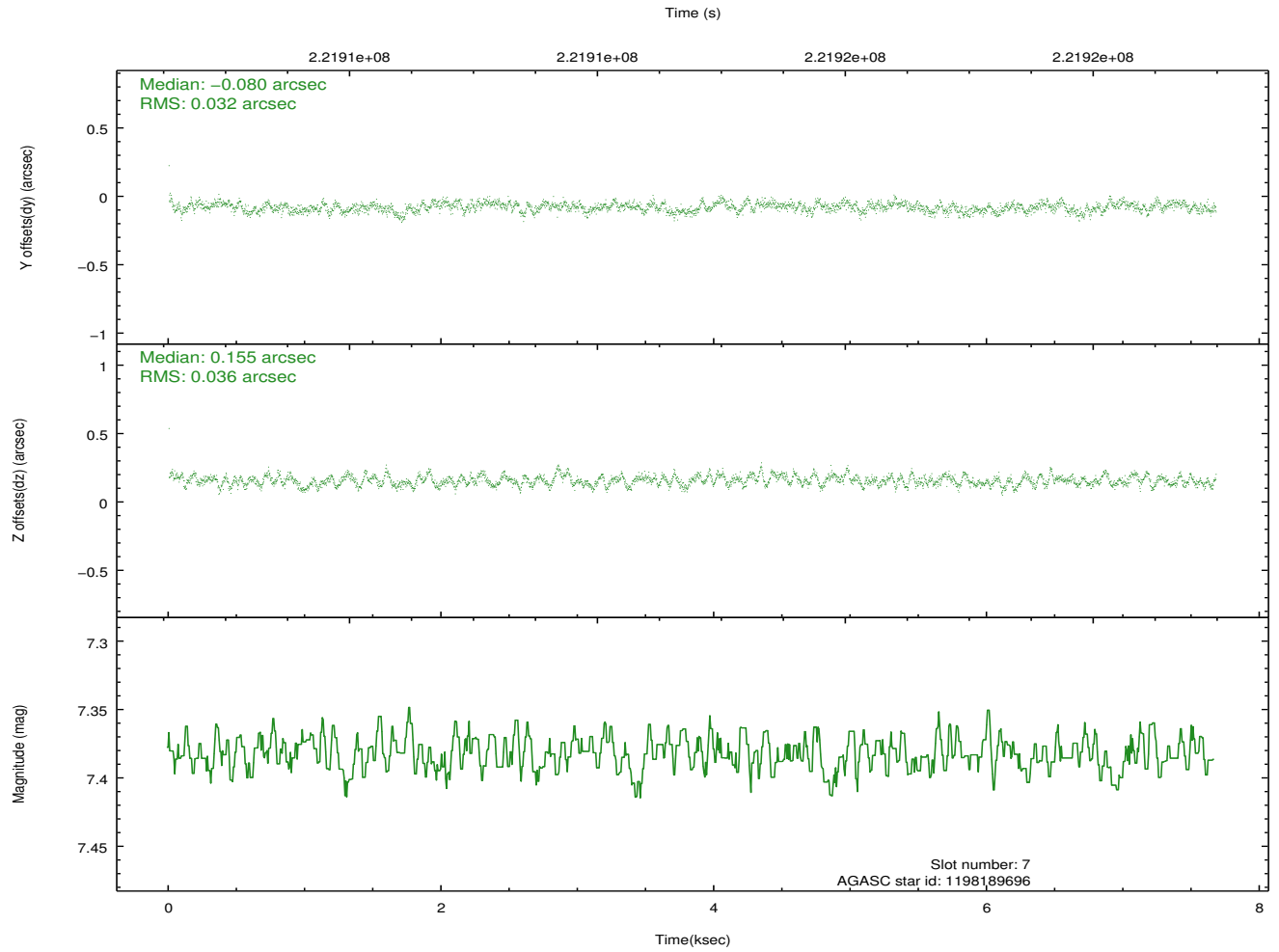
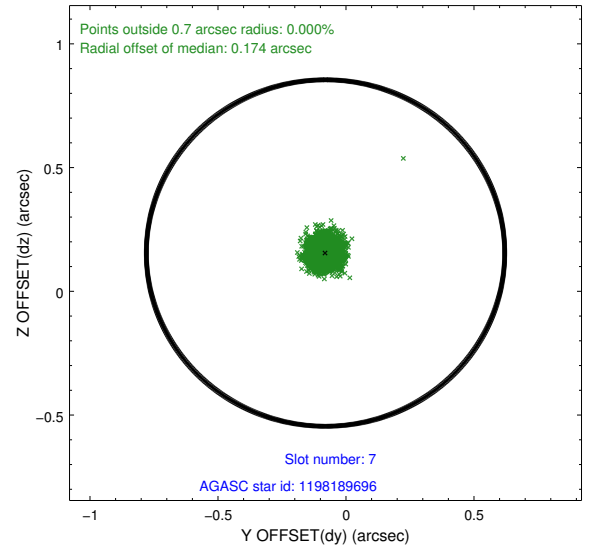
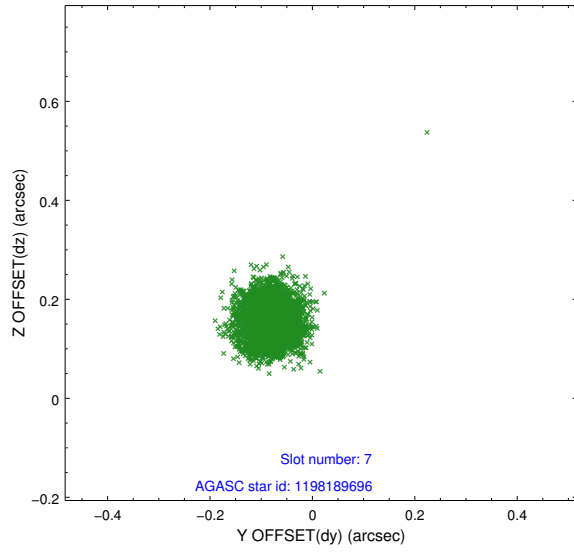
2.4.3 Slot 5



2.4.4 Slot 6

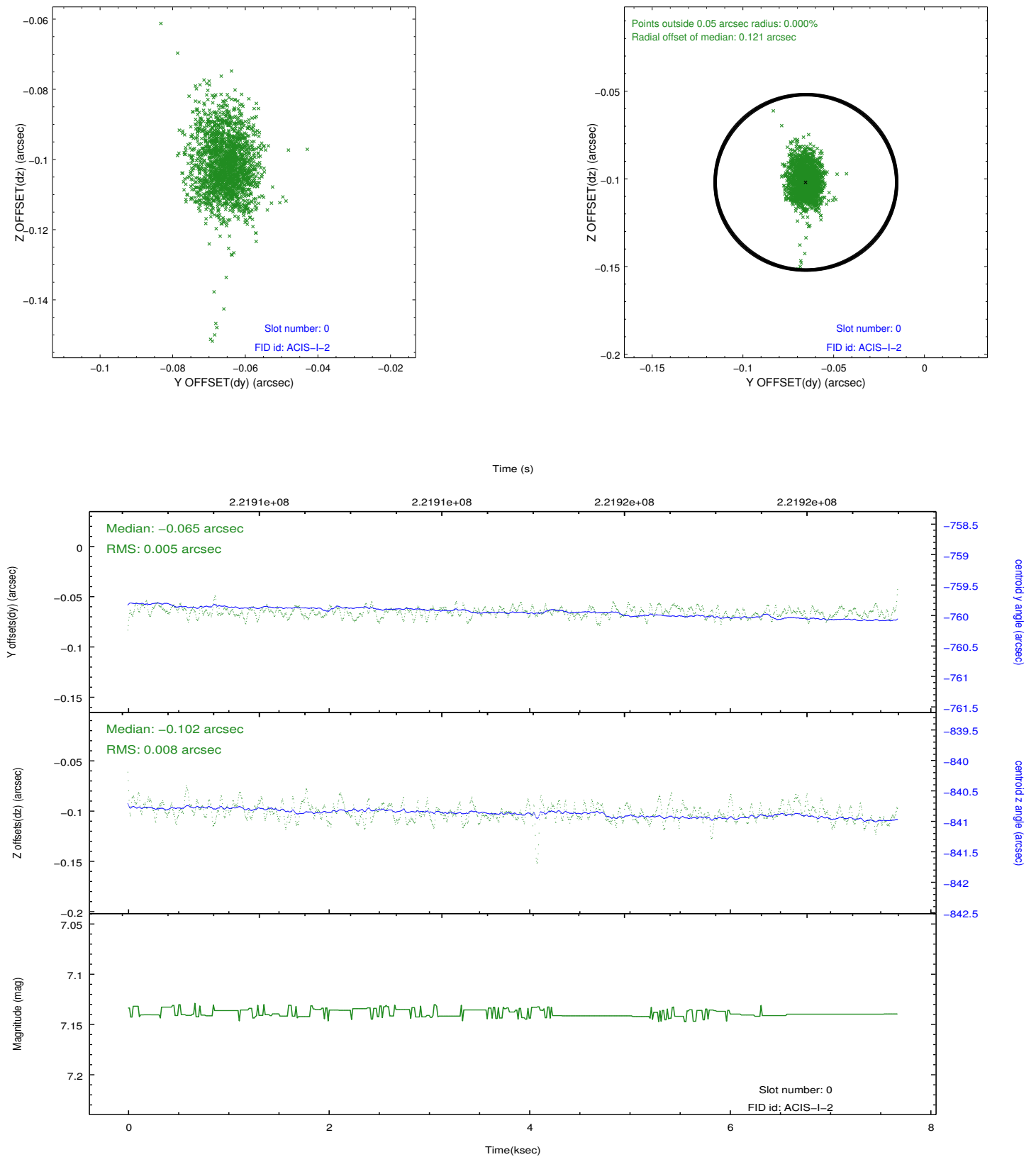


2.4.5 Slot 7

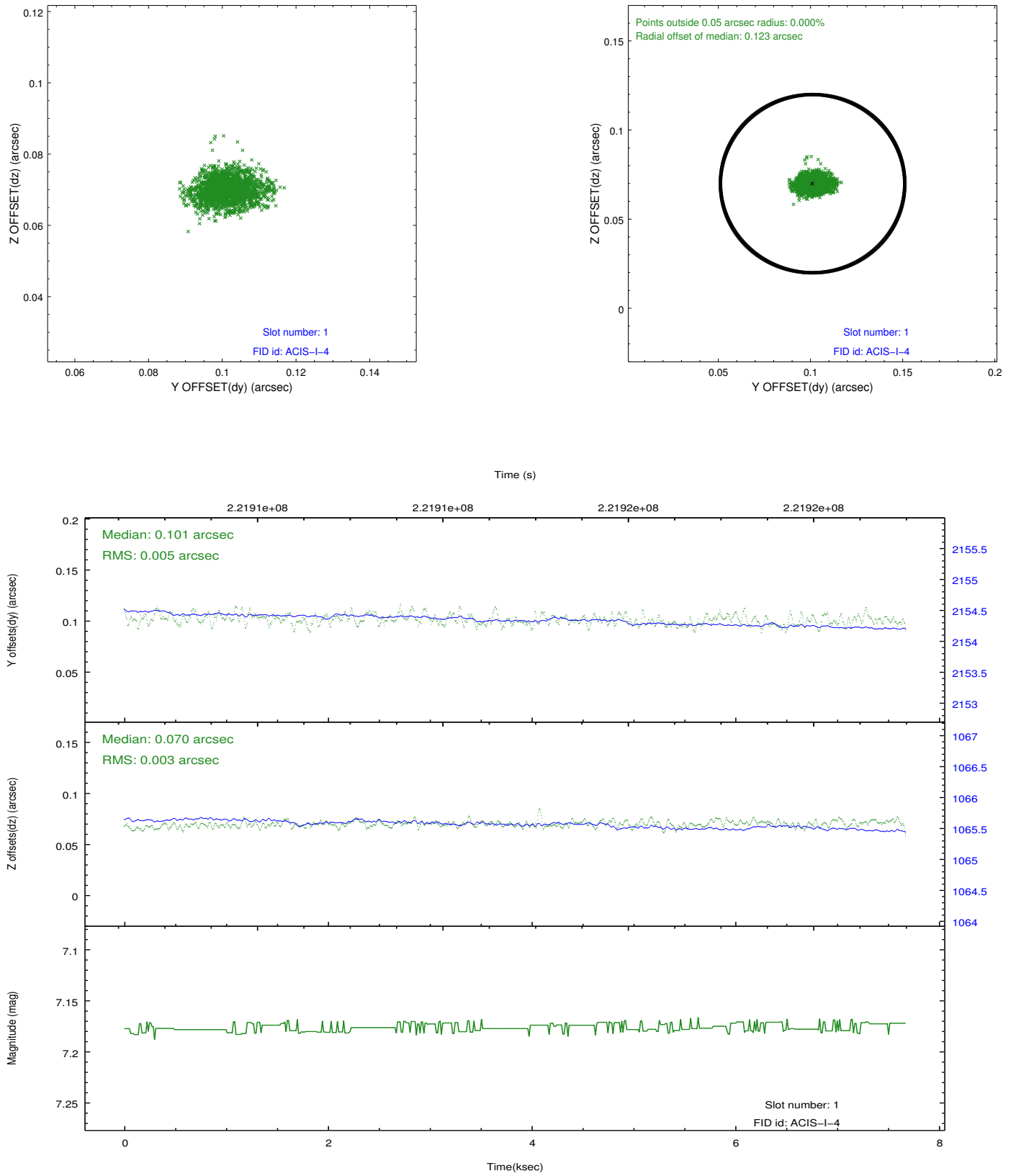


2.5 FID Slots

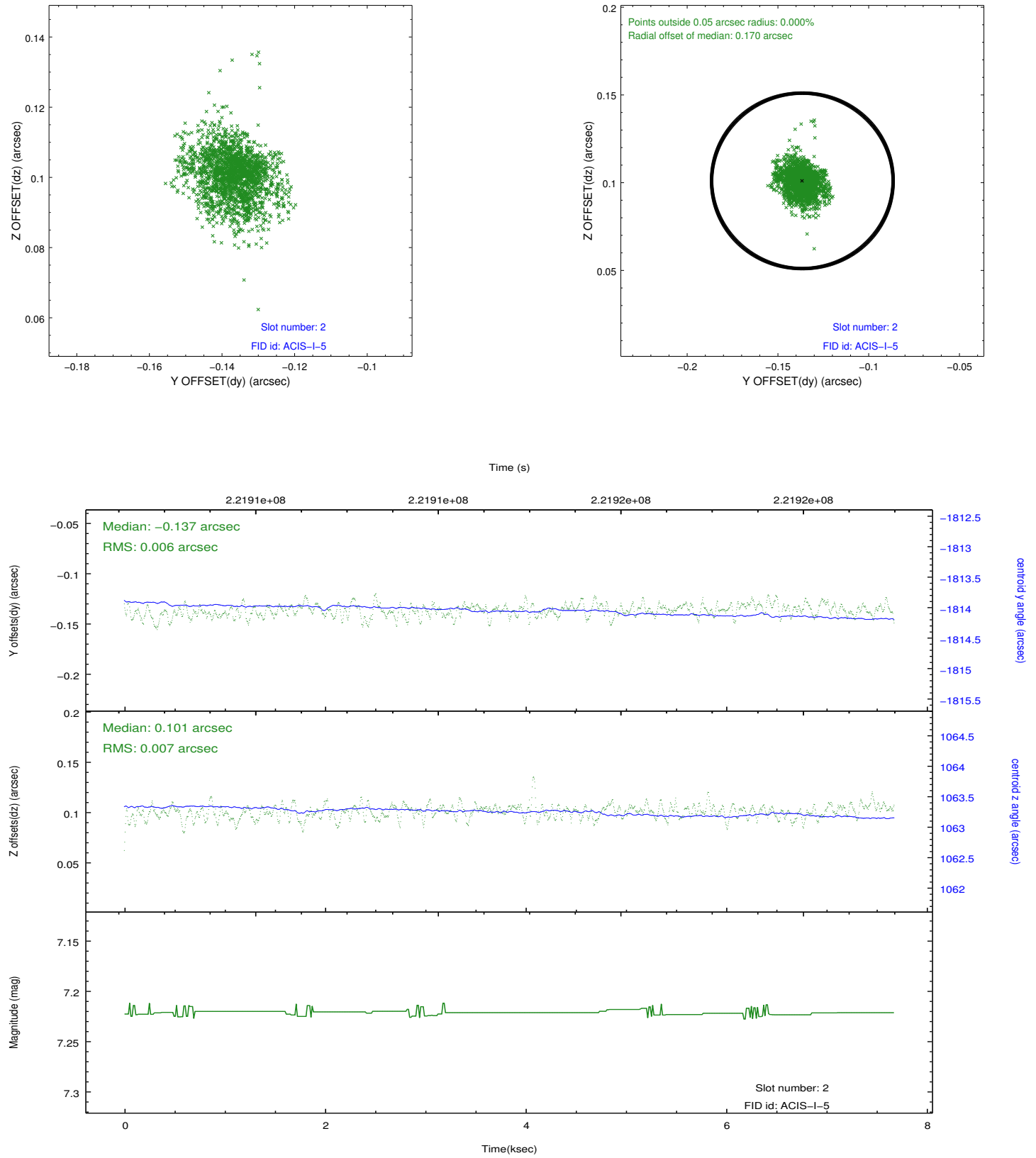
2.5.1 Slot 0



2.5.2 Slot 1



2.5.3 Slot 2



A Summary

A.1 Status

V&V Scientist	Jen Lauer
V&V Date (YYYY-MM-DD)	2013.01.08
V&V Edition	1
V&V Disposition and Status	OK
V&V Charge Time	7.254399

A.2 Comments

Window constraint met.