

V&V Reference Report

L2 ASCDS Version : 7.6.7

Observation 6053 - L2 Version 002
Chandra X-Ray Center

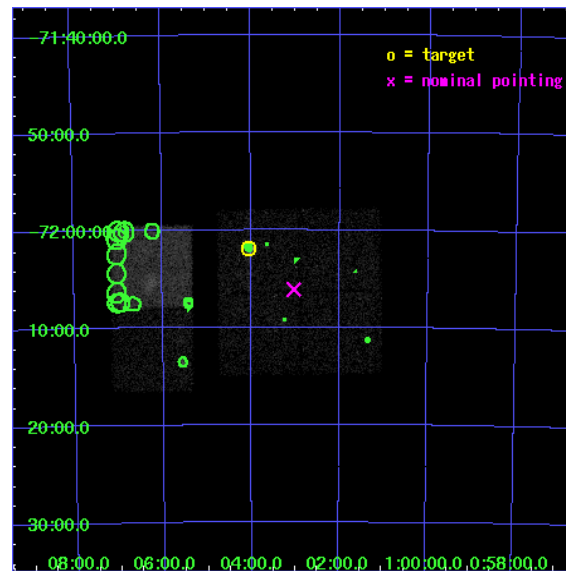
L2 Processing Date: Feb 16 2006

Contents

1	Front	2
2	OBI	3
2.1	OBI	3
2.1.1	Images	3
2.1.2	Bias	3
2.1.3	Parameters	4
2.1.4	Events	4
2.2	Compared Parameters	5
2.3	Aspect	6
2.4	Star Slots	9
2.4.1	Slot 3	9
2.4.2	Slot 4	10
2.4.3	Slot 5	11
2.4.4	Slot 6	12
2.4.5	Slot 7	13
2.5	FID Slots	14
2.5.1	Slot 0	14
2.5.2	Slot 1	15
2.5.3	Slot 2	16
3	Point Sources	17
A	Summary	18
A.1	Status	18
A.2	Comments	18

1 Front

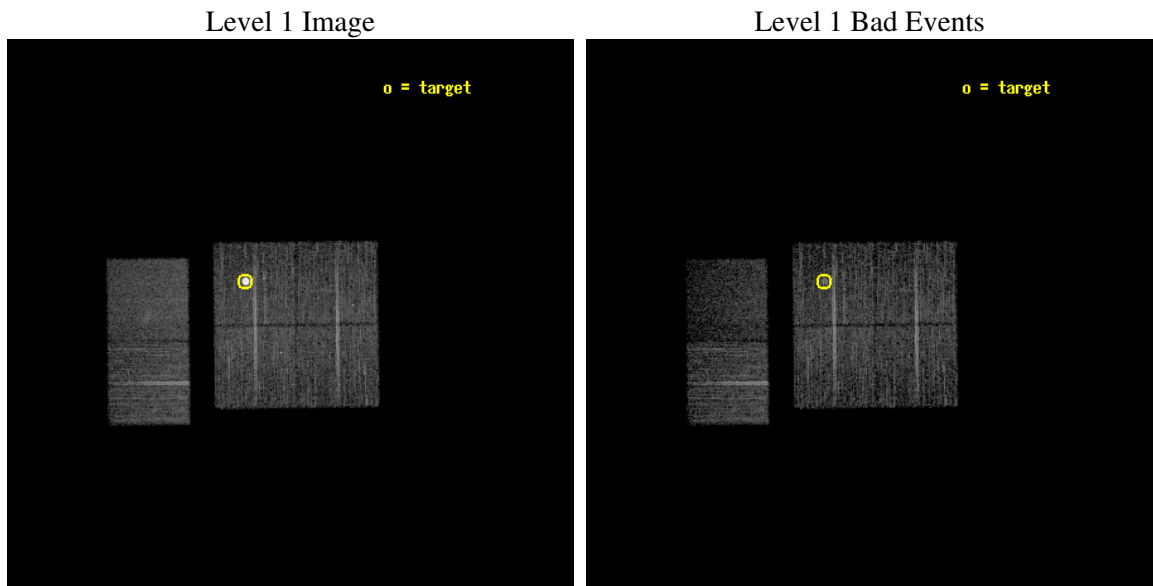
seq_num	590380
obs_id	6053
title	AO6A ACIS-I Calibration Observations of E0102-72
observer	Dr. CXC Calibration
object	E0102-72[I3,-120,-4.0,4.5,0]
dtcycle	0
cycle	P
ra_targ	16.01
dec_targ	-72.032028
ra_nom	15.757538471423
dec_nom	-72.101878928315
roll_nom	269.34179703461
revision	2
ontime	7254.3999729753
livetime	7162.5403924422
ontime0	7254.3999729753
ontime1	7254.3999729753
ontime2	7254.3999729753
ontime3	7254.3999729753
ontime6	7254.3999729753
ontime7	7254.3999729753
l2events	57422



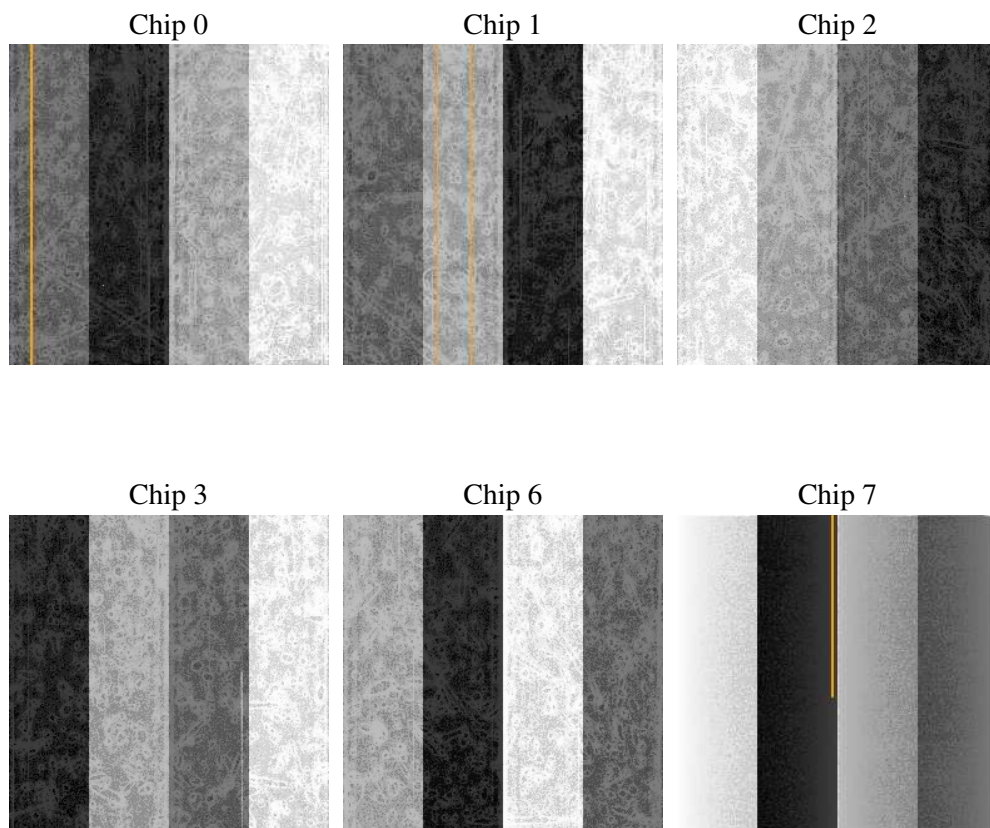
2 OBI

2.1 OBI

2.1.1 Images



2.1.2 Bias



2.1.3 Parameters

obi_num	1
ascdsver	7.6.7
caldsver	3.2.1
date	2006-02-16T17:27:29
revision	2

sched_exp_time	7500.000000
ontime	7259.8433472514
ontime0	7259.8433472514
ontime1	7259.8433771431
ontime2	7259.8433273435
ontime3	7259.8433472514
ontime6	7259.8433572352
ontime7	7259.8433572352
l1events	267948

2.1.4 Events

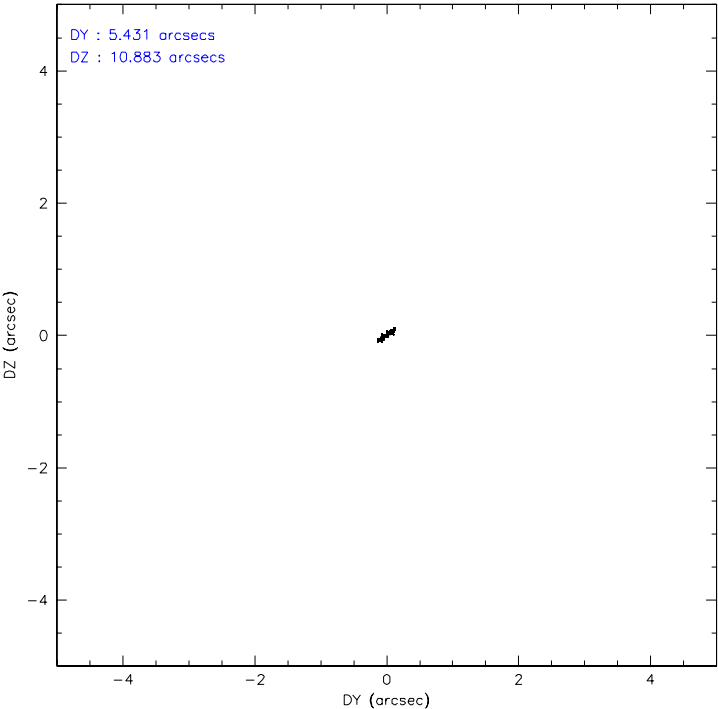
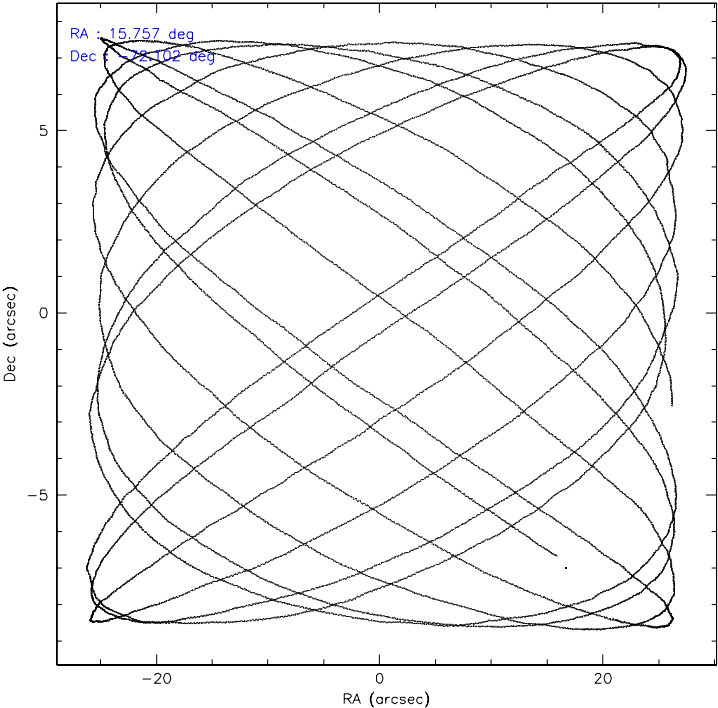
	ccd 0	ccd 1	ccd 2	ccd 3	ccd 6	ccd 7
level 1 events	39505	39932	43247	62093	43584	39587
rejected events	35113	35364	38673	36504	39152	21168
rejected %	88%	88%	89%	58%	89%	53%

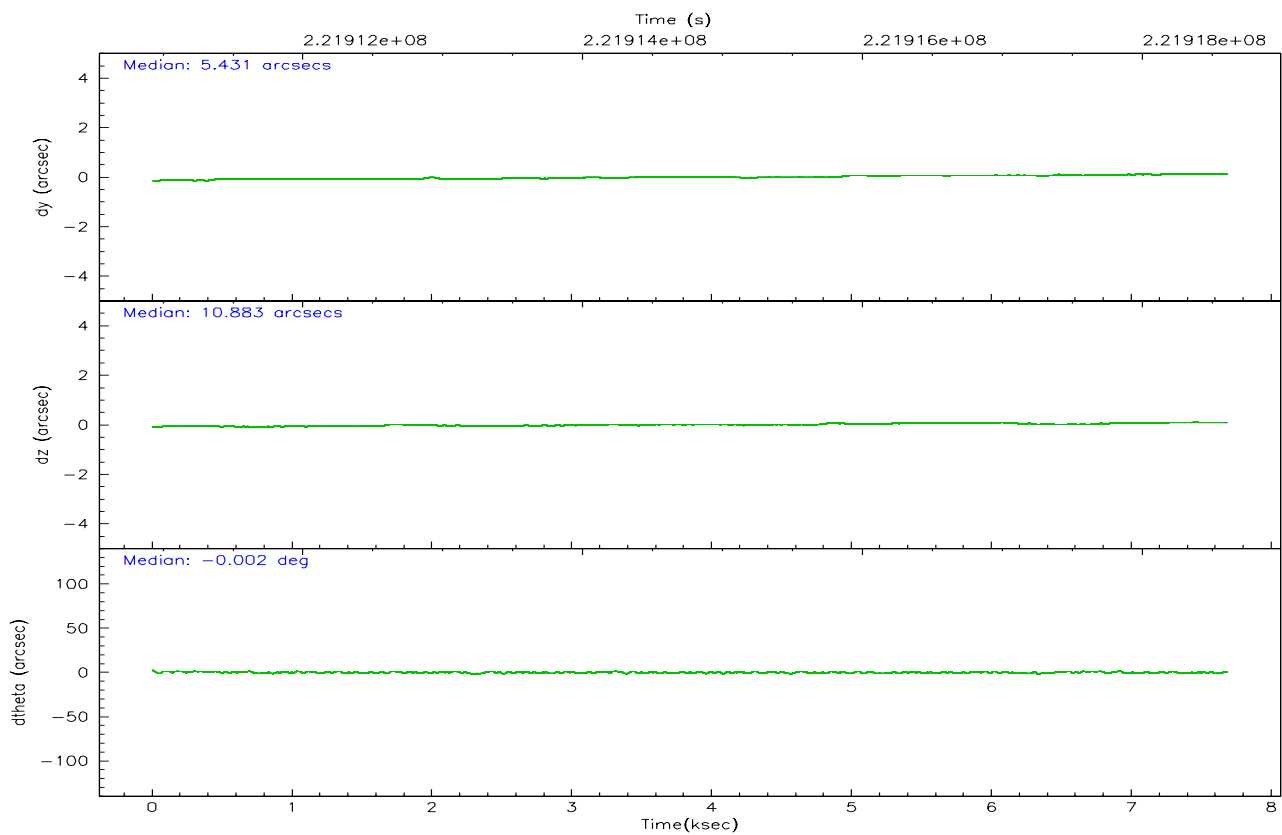
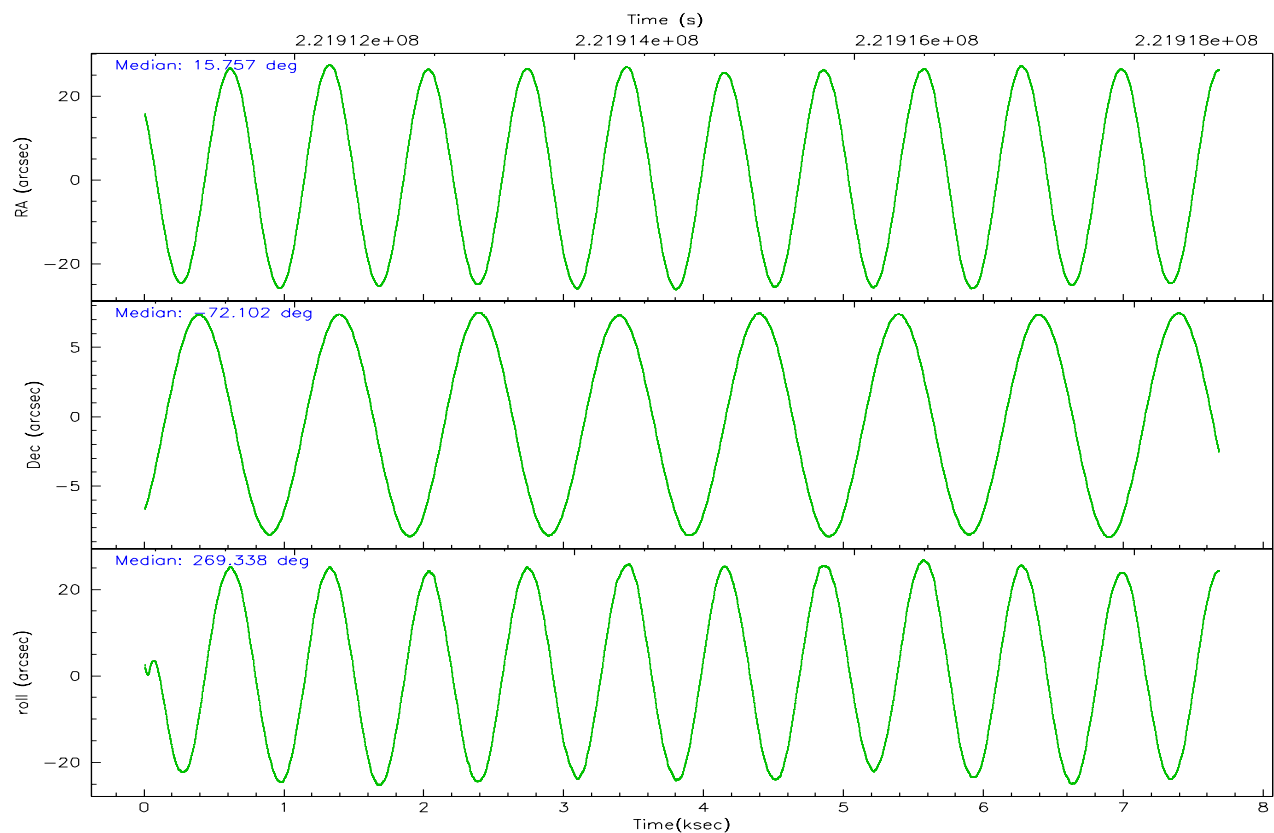
	ccd 0	ccd 1	ccd 2	ccd 3	ccd 6	ccd 7
grade 0 events	1663	1755	1980	20733	1693	1440
	4%	4%	4%	33%	3%	3%
grade 1 events	18	18	28	174	20	18
	0%	0%	0%	0%	0%	0%
grade 2 events	1067	933	987	2311	923	4753
	2%	2%	2%	3%	2%	12%
grade 3 events	453	505	417	876	466	1192
	1%	1%	0%	1%	1%	3%
grade 4 events	437	513	450	850	457	1231
	1%	1%	1%	1%	1%	3%
grade 5 events	1232	1311	1161	1389	1471	3157
	3%	3%	2%	2%	3%	7%
grade 6 events	775	865	741	836	895	9810
	1%	2%	1%	1%	2%	24%
grade 7 events	33860	34032	37483	34924	37659	17986
	85%	85%	86%	56%	86%	45%

2.2 Compared Parameters

Parameter	Planned	Actual	Parameter	Planned	Actual
Instrument	ACIS	ACIS	Obspar format version number	6	6
Detector	ACIS-012367	ACIS-012367	Obspar file type	PREDICTED	ACTUAL
Grating	NONE	NONE	Obspar update status	NONE	UPDATED
Data mode	VFAINT	VFAINT	On-chip summing requested	N	N
Observation mode	POINTING	POINTING	Subarray requested	NONE	NONE
Pointing RA	15.713702	15.75753847142282	Alternating exposures requested	N	N
Pointing Dec	-72.078124	-72.10187892831503	Primary exposure time	0.000000	3.2
Pointing Roll	269.091403	269.3417970346056			
Window start time	215654464.184000	215654464.184000			
Window stop time	223516864.184000	223516864.184000			
SIM focus pos (mm)	-0.782348	-0.7809083437167272			
SIM defocus (mm)	0	0.001439871863259334			
SIM translation stage pos (mm)	-233.592463	-233.5874344608287			
SIM translation stage offset (mm)	0	-0.005018542100998502			
Observation start time	221911114.184000	221910737.39394			
Observation start date	2005-01-12T09:57:30	2005-01-12T09:52:17			
Observation end time	221918614.184000	221918747.76931			
Observation end date	2005-01-12T12:02:30	2005-01-12T12:05:47			
Read mode	TIMED	TIMED			

2.3 Aspect



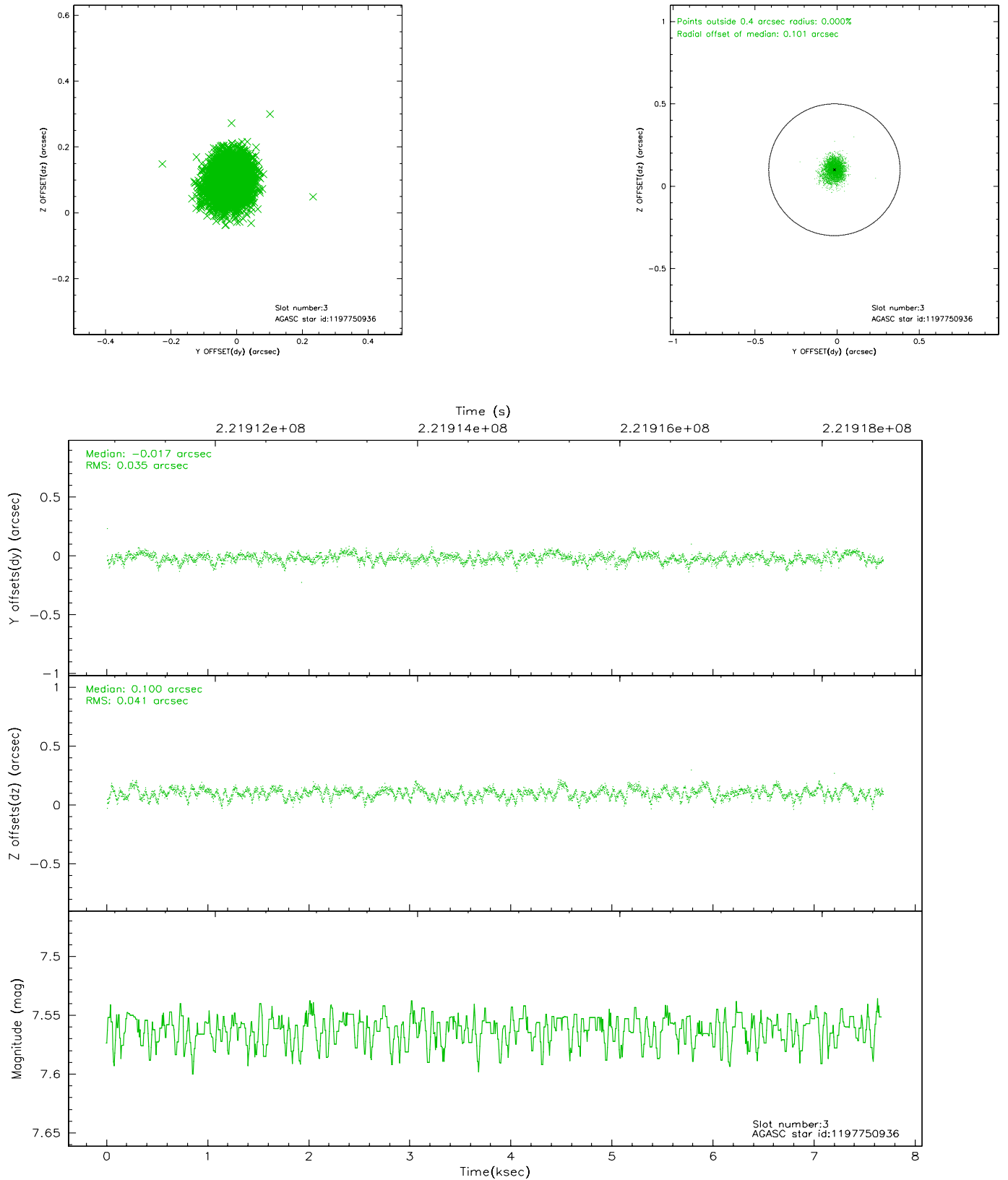


Slot Statistics

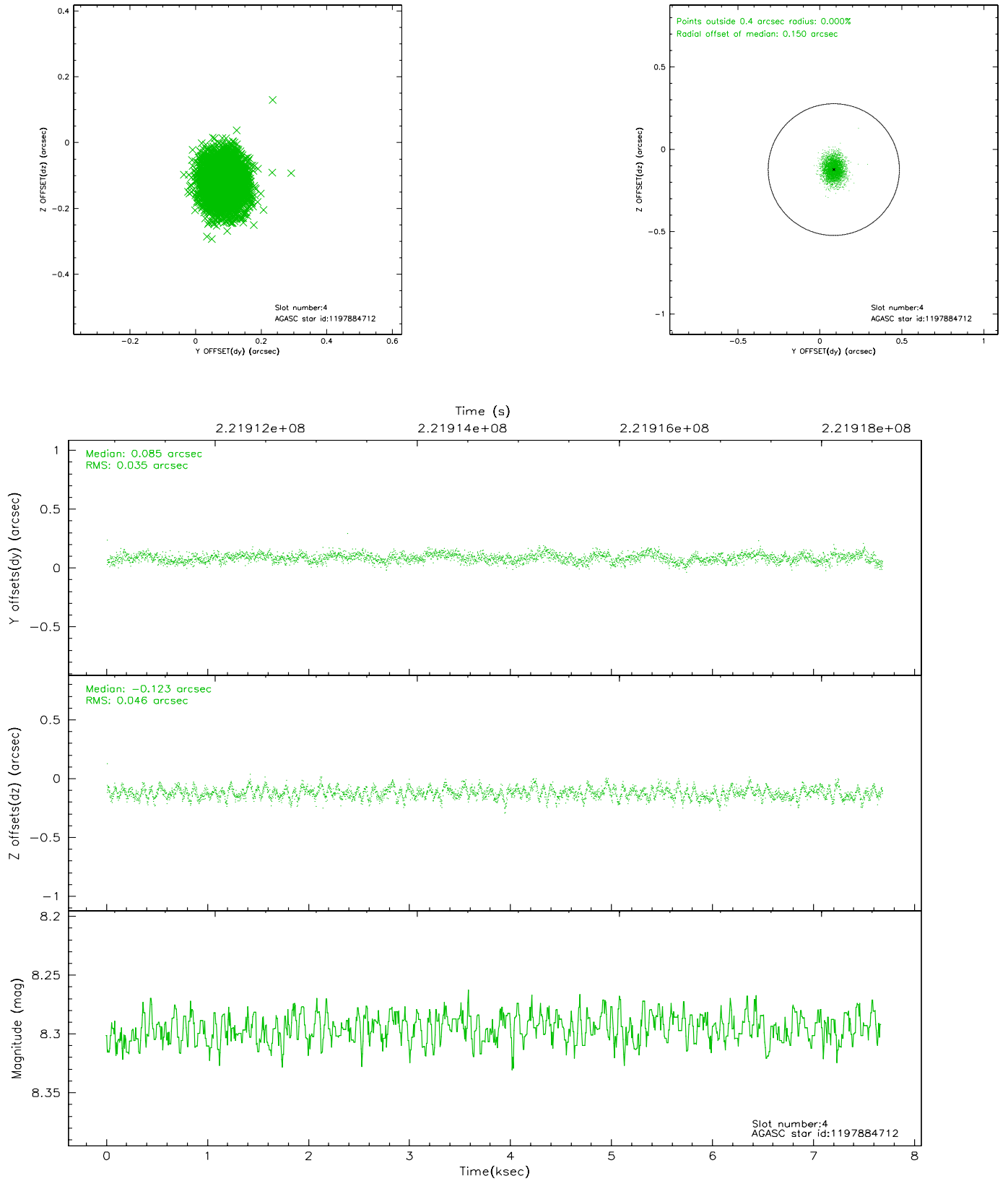
slot	status	id	mag	n_pts	med_dy	med_dz	dr1	dr2	ra	dec	mean_y	mean_z
0	FID	ACIS-I-2	7.14	1873	-0.054	-0.079	0.009	0.016	0.000000	0.000000	-759.93	-840.83
1	FID	ACIS-I-4	7.18	1873	0.059	0.058	0.006	0.010	0.000000	0.000000	2153.90	1065.12
2	FID	ACIS-I-5	7.22	1873	-0.106	0.089	0.009	0.015	0.000000	0.000000	-1812.87	1063.83
3	GUIDE	1197750936	7.56	3744	-0.017	0.100	0.058	0.091	15.387940	-71.549550	-1895.12	-401.01
4	GUIDE	1197884712	8.30	3747	0.085	-0.123	0.060	0.100	16.087398	-72.252690	623.12	420.07
5	GUIDE	1197885104	9.35	3729	0.031	-0.062	0.127	0.195	17.845067	-72.189368	405.55	2353.30
6	GUIDE	1197885328	7.22	3675	-0.016	-0.072	0.068	0.103	16.283090	-71.733943	-1245.76	623.99
7	GUIDE	1198189696	7.38	3746	-0.080	0.155	0.051	0.080	15.223750	-72.697522	2240.10	-488.37

2.4 Star Slots

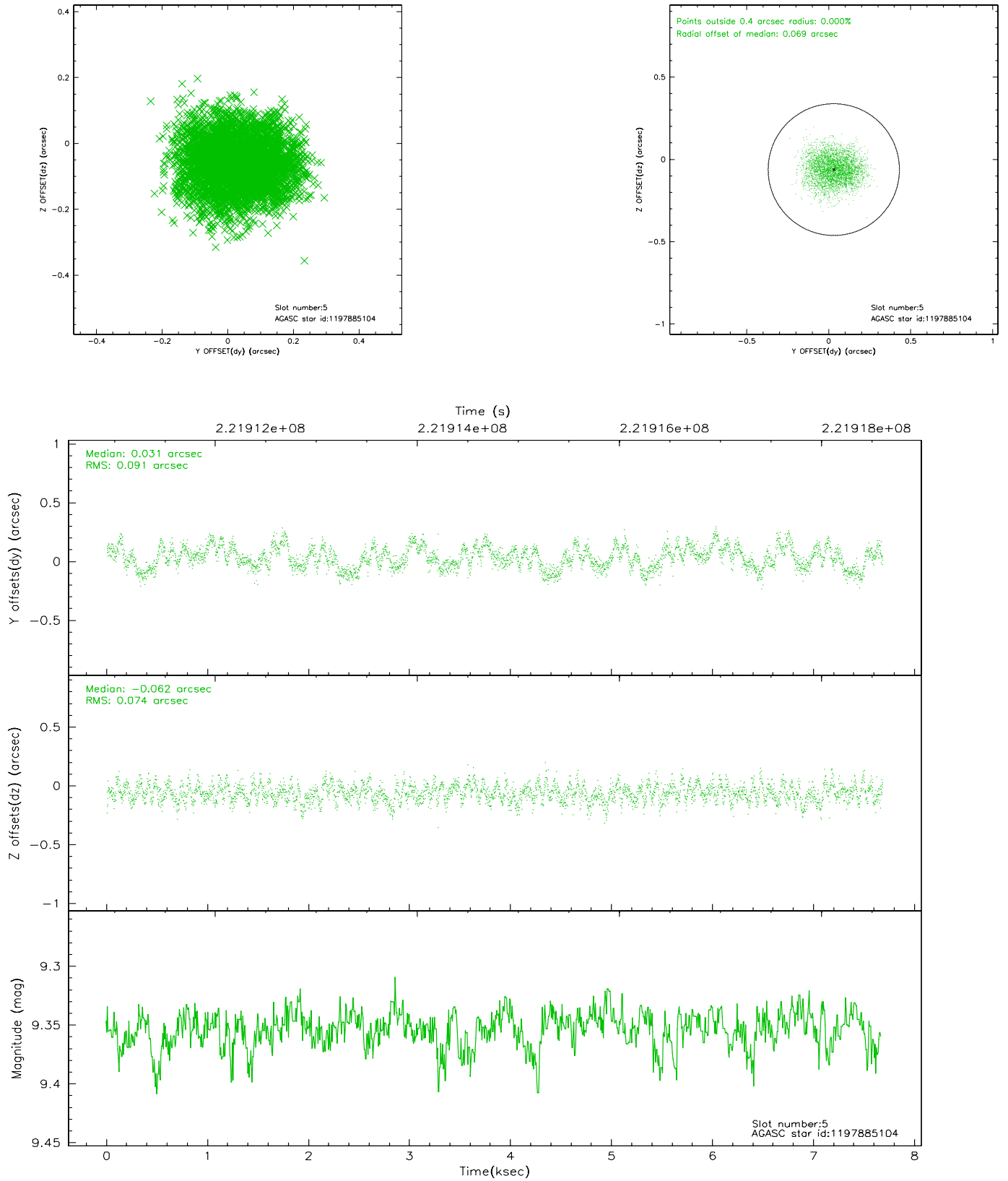
2.4.1 Slot 3



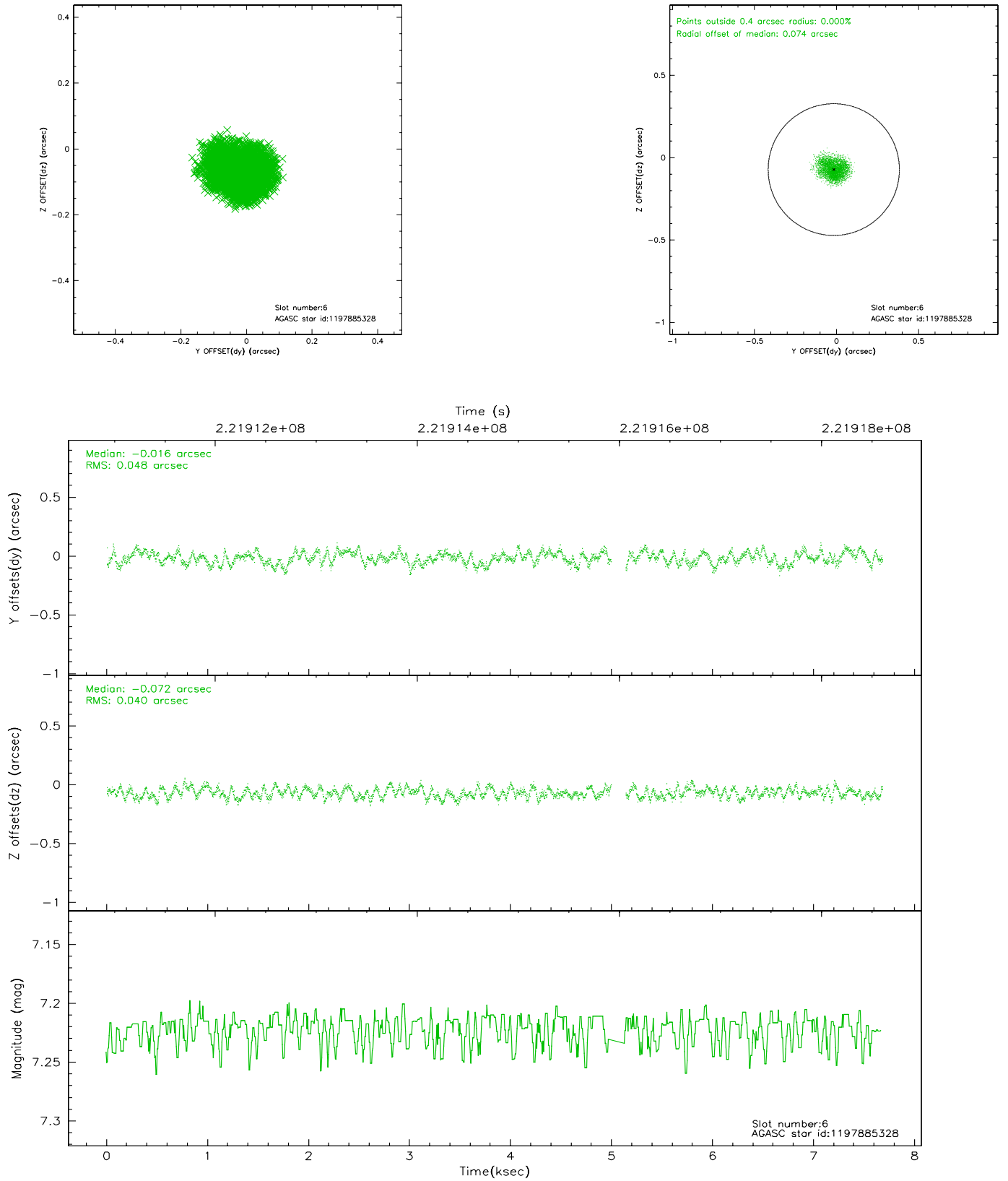
2.4.2 Slot 4



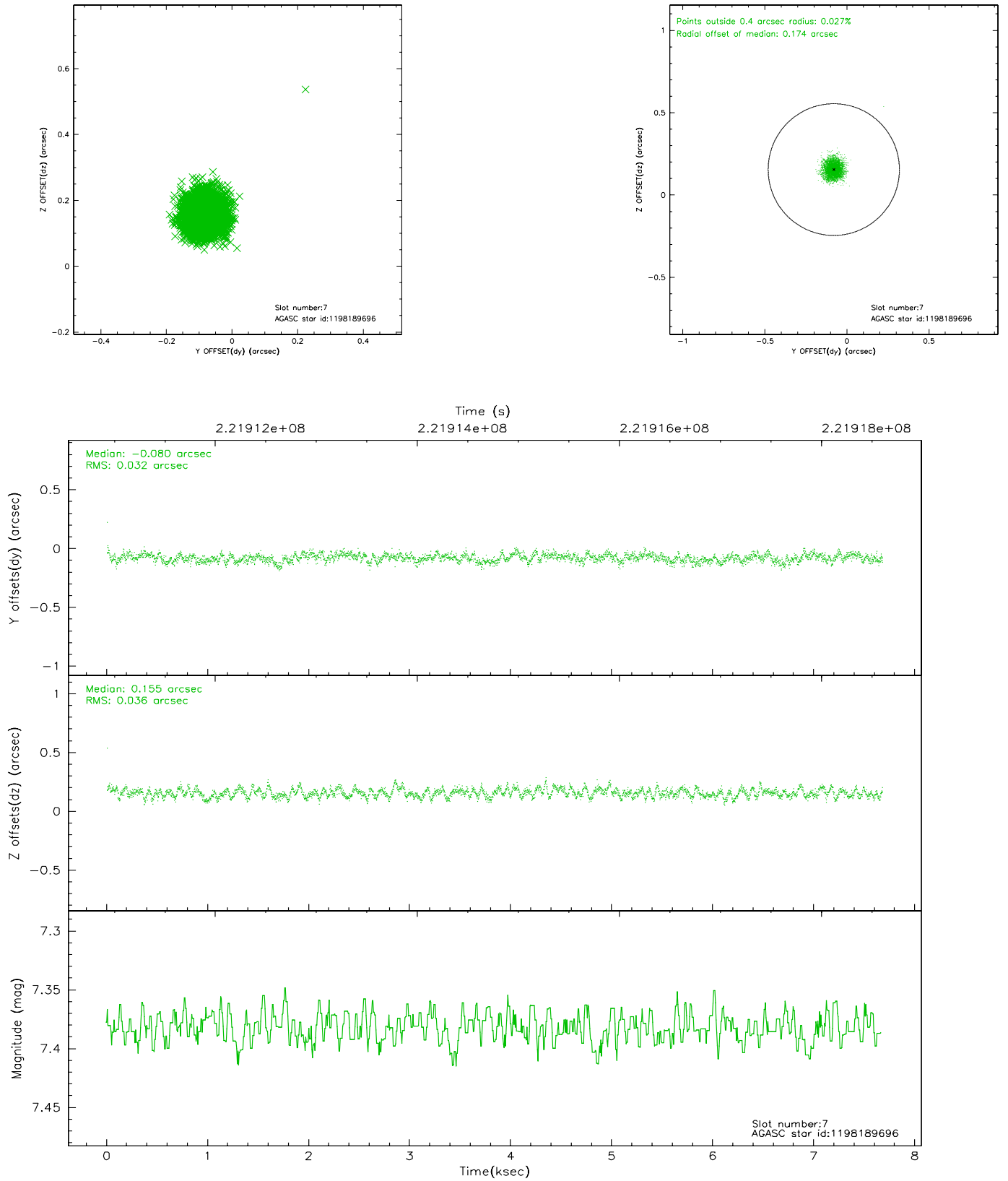
2.4.3 Slot 5



2.4.4 Slot 6

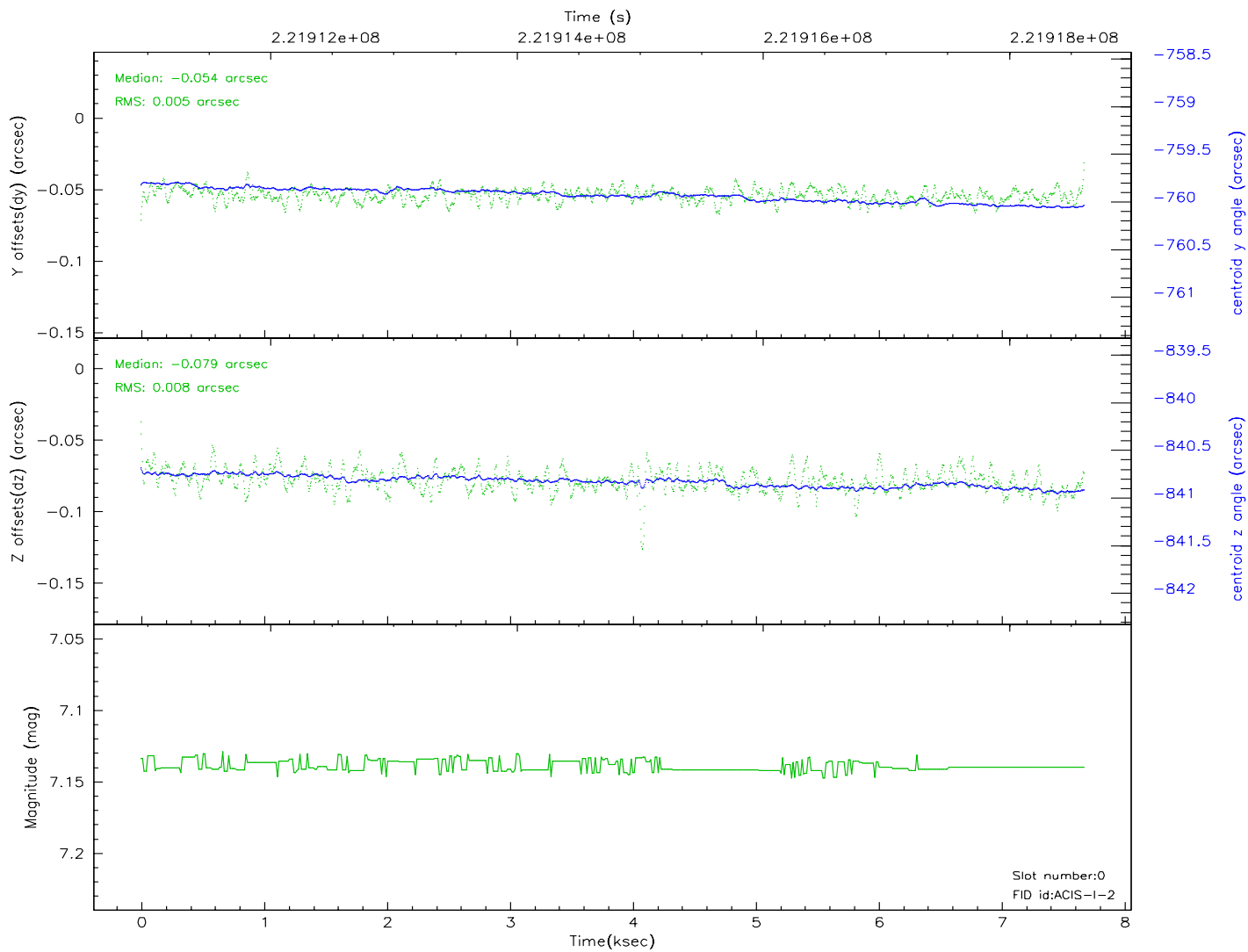
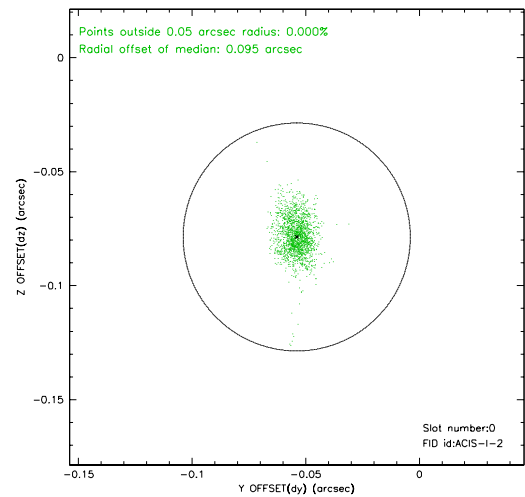
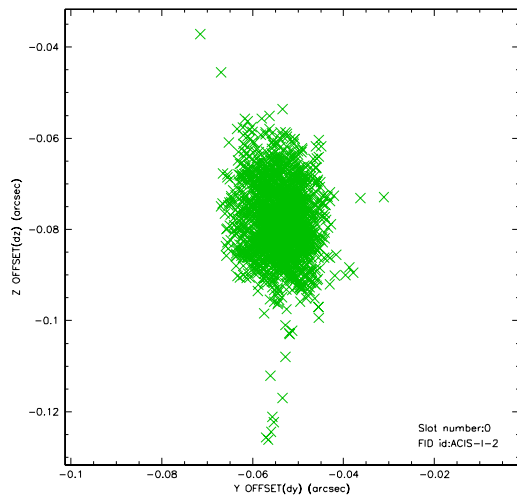


2.4.5 Slot 7

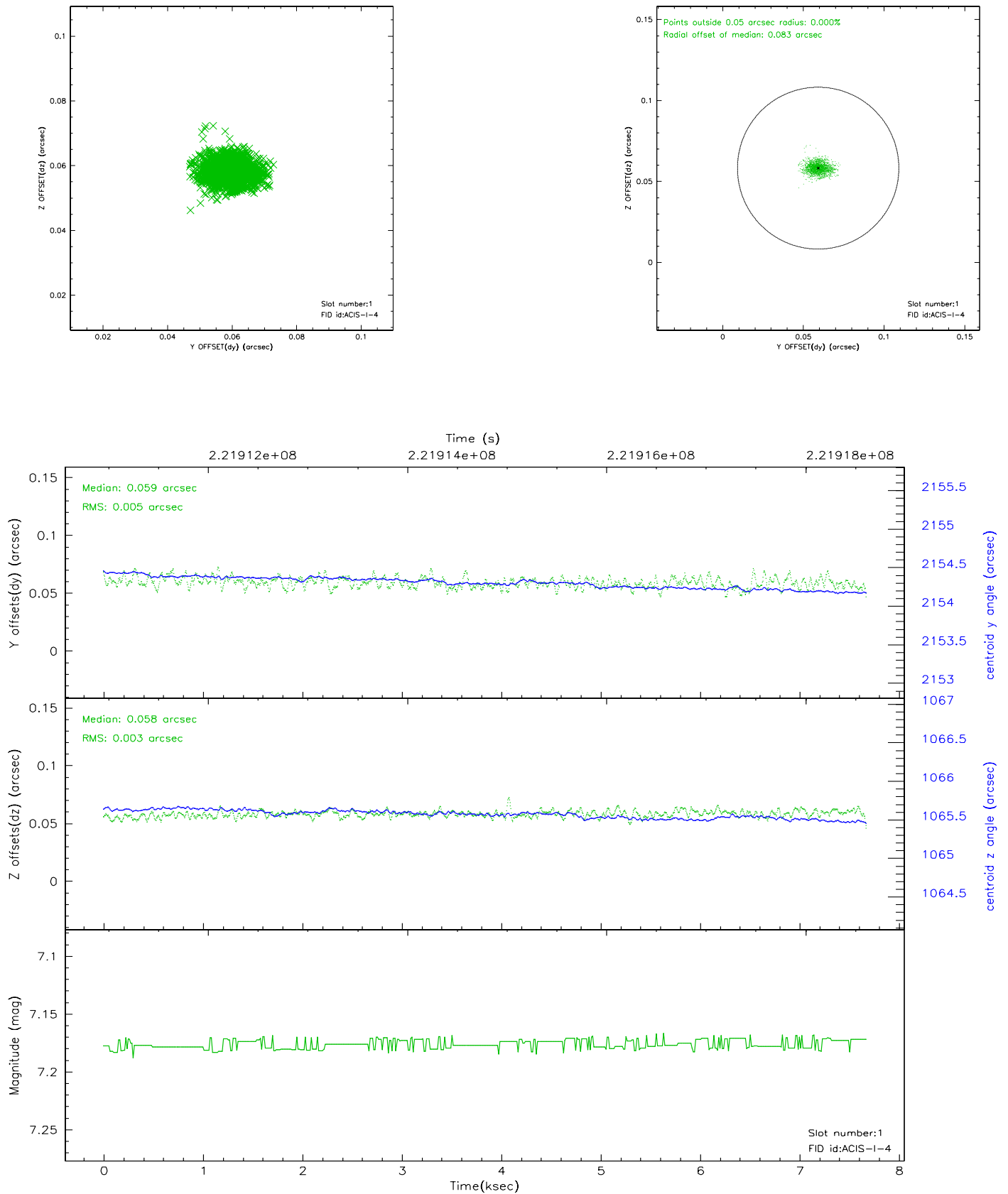


2.5 FID Slots

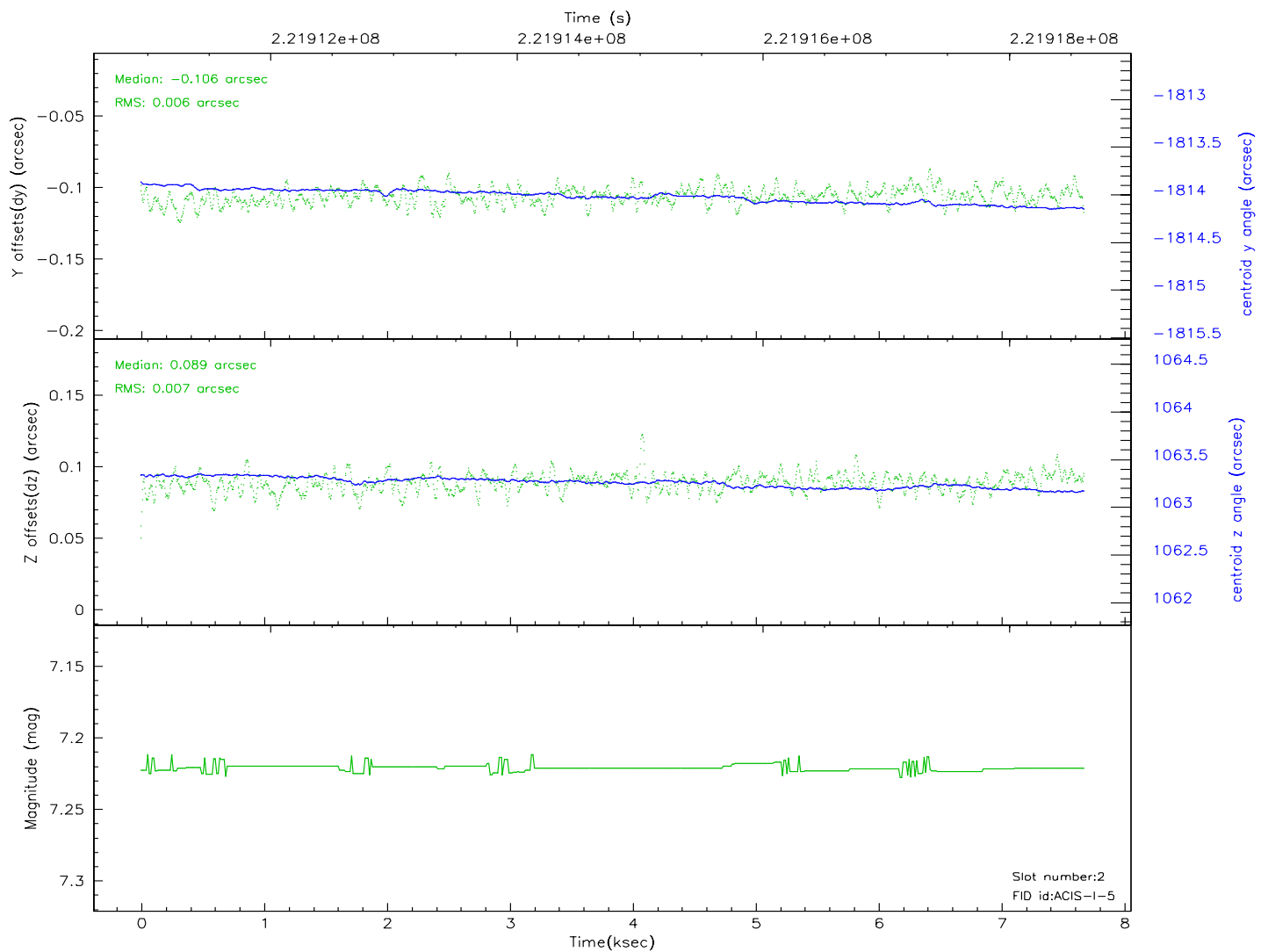
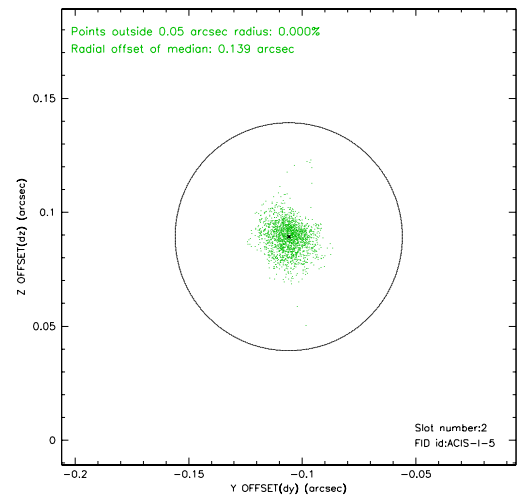
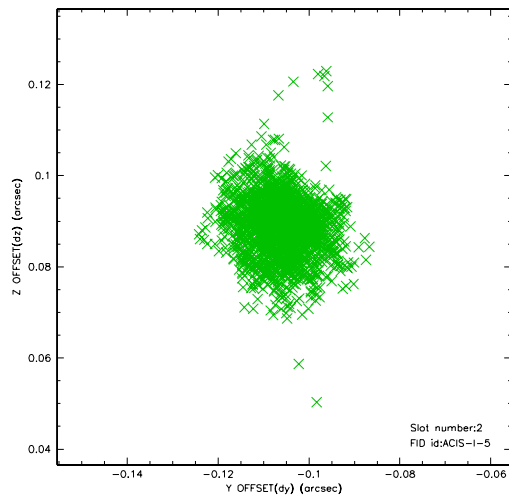
2.5.1 Slot 0



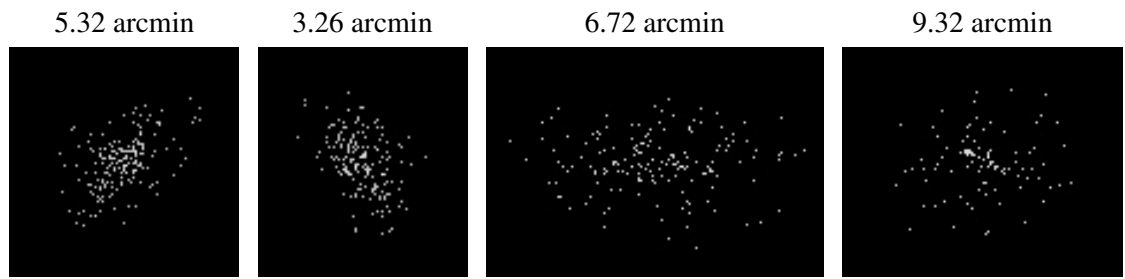
2.5.2 Slot 1



2.5.3 Slot 2



3 Point Sources



A Summary

A.1 Status

V&V Scientist	Beth Sundheim
V&V Date (YYYY-MM-DD)	2006.02.16
V&V Edition	1
V&V Disposition and Status	OK
V&V Charge Time	7.254399

A.2 Comments

Charge time:

Using existing charge time of 7.254399.