

V&V Reference Report

L2 ASCDS Version : 7.6.7

Observation 6051 - L2 Version 002
Chandra X-Ray Center

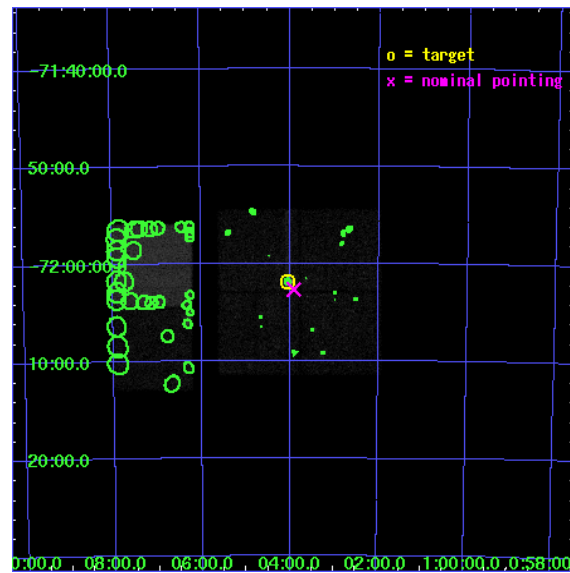
L2 Processing Date: Feb 16 2006

Contents

1	Front	2
2	OBI	3
2.1	OBI	3
2.1.1	Images	3
2.1.2	Bias	3
2.1.3	Parameters	4
2.1.4	Events	4
2.2	Compared Parameters	5
2.3	Aspect	6
2.4	Star Slots	9
2.4.1	Slot 3	9
2.4.2	Slot 4	10
2.4.3	Slot 5	11
2.4.4	Slot 6	12
2.4.5	Slot 7	13
2.5	FID Slots	14
2.5.1	Slot 0	14
2.5.2	Slot 1	15
2.5.3	Slot 2	16
3	Point Sources	17
A	Summary	18
A.1	Status	18
A.2	Comments	18

1 Front

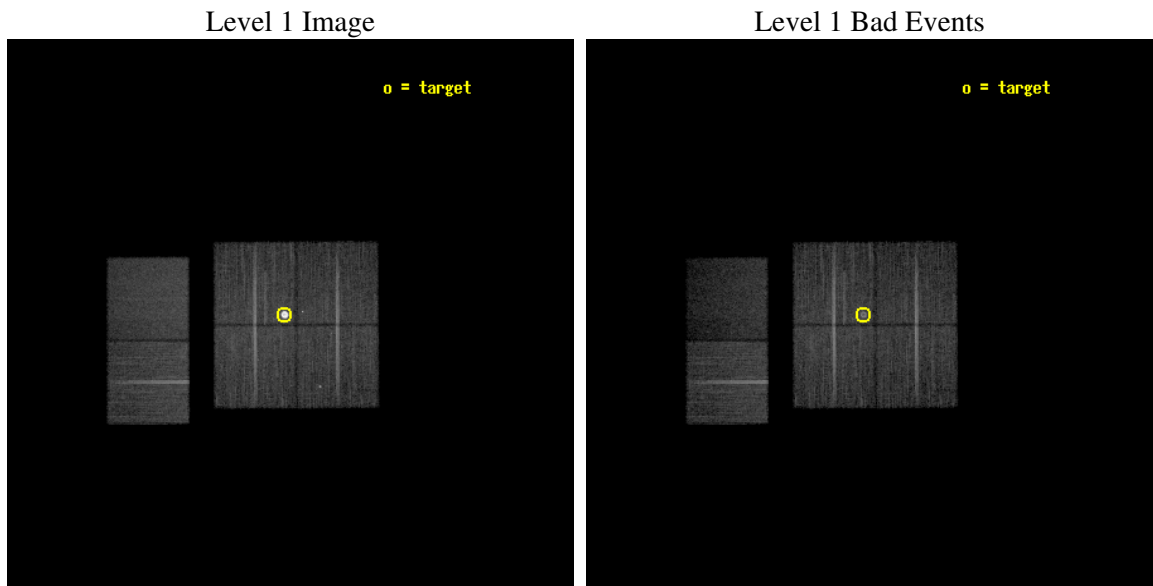
seq_num	590378
obs_id	6051
title	AO6A ACIS-I Calibration Observations of E0102-72
observer	Dr. CXC Calibration
object	E0102-72[I3,-120,-0.5,0.5,0]
dtcycle	0
cycle	P
ra_targ	16.01
dec_targ	-72.032028
ra_nom	15.976842899637
dec_nom	-72.044546120235
roll_nom	269.80584426459
revision	2
ontime	18150.399932384
livetime	17920.568639582
ontime0	18147.158962101
ontime1	18150.399932384
ontime2	18147.158942163
ontime3	18150.399932384
ontime6	18147.158991992
ontime7	18150.399932384
l2events	148374



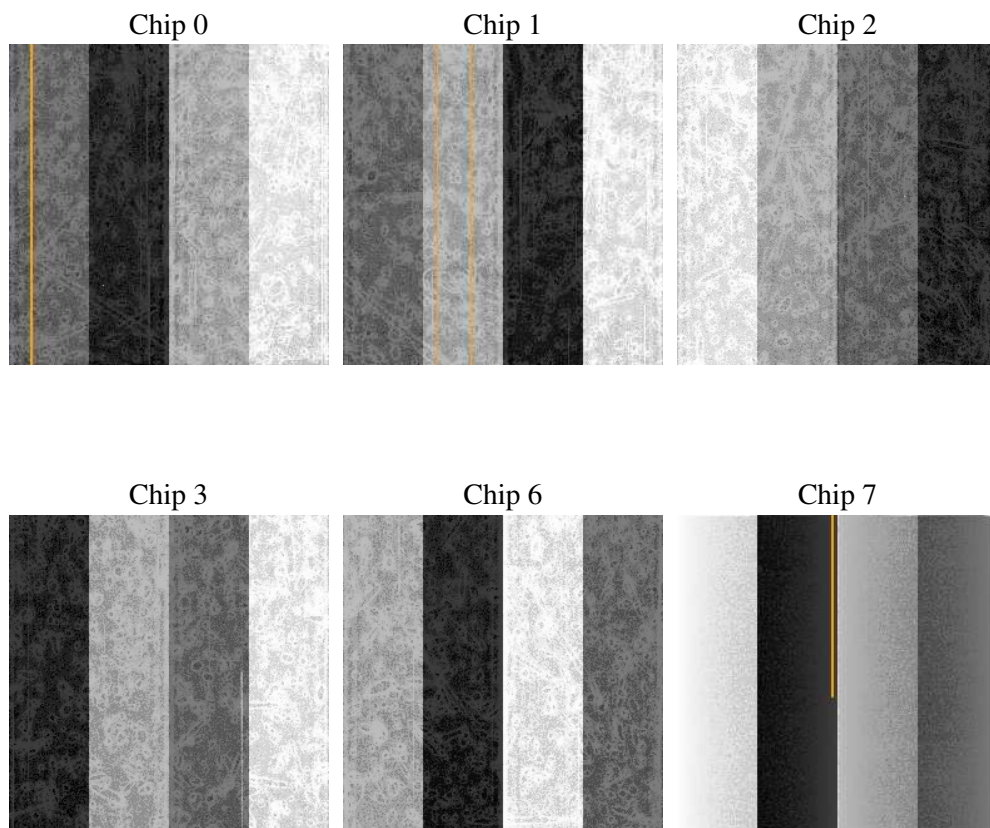
2 OBI

2.1 OBI

2.1.1 Images



2.1.2 Bias



2.1.3 Parameters

obi_num	0
ascdsver	7.6.7
caldsver	3.2.1
date	2006-02-16T18:17:40
revision	2

sched_exp_time	18000.000000
ontime	18557.980357051
ontime0	18554.739386767
ontime1	18557.980357051
ontime2	18554.739336938
ontime3	18557.980357051
ontime6	18554.739416659
ontime7	18557.980357051
l1events	686077

2.1.4 Events

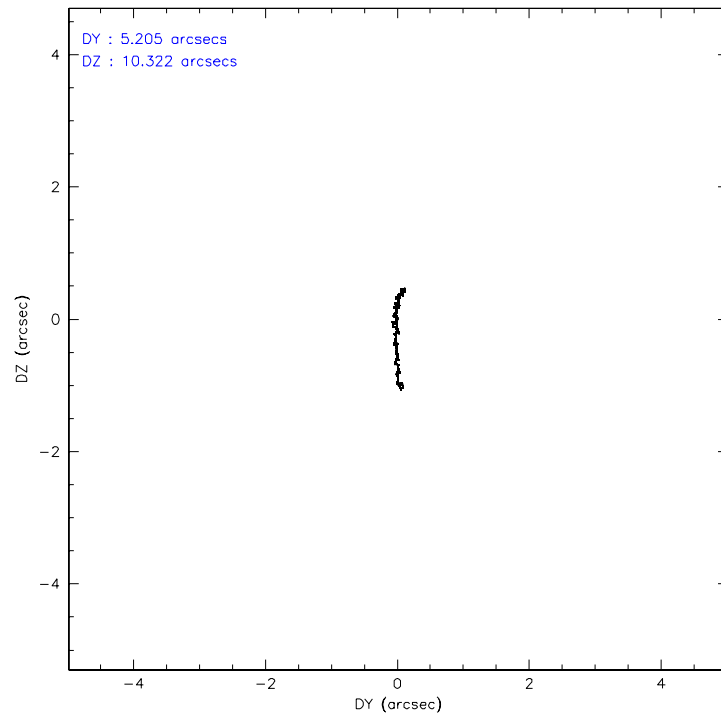
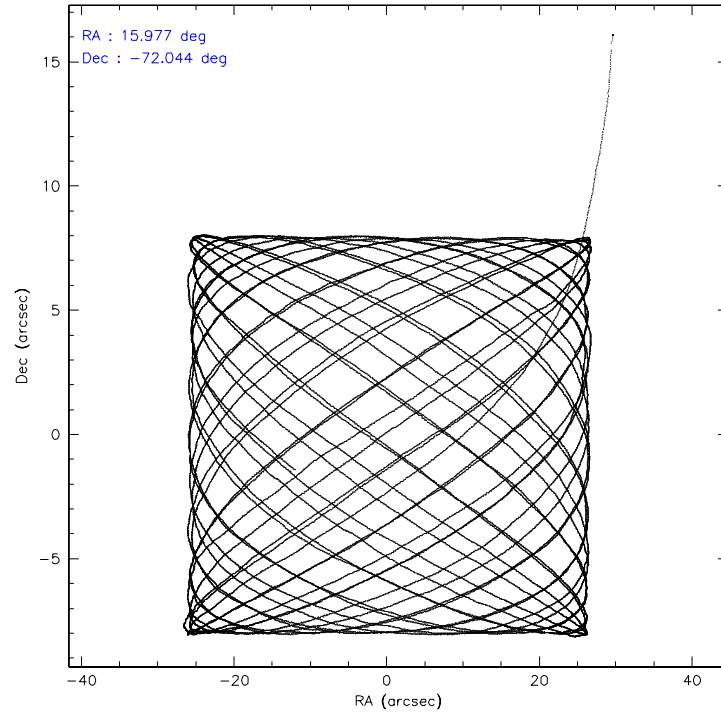
	ccd 0	ccd 1	ccd 2	ccd 3	ccd 6	ccd 7
level 1 events	100693	95129	111254	167863	110915	100223
rejected events	89076	83786	99848	99208	99803	55255
rejected %	88%	88%	89%	59%	89%	55%

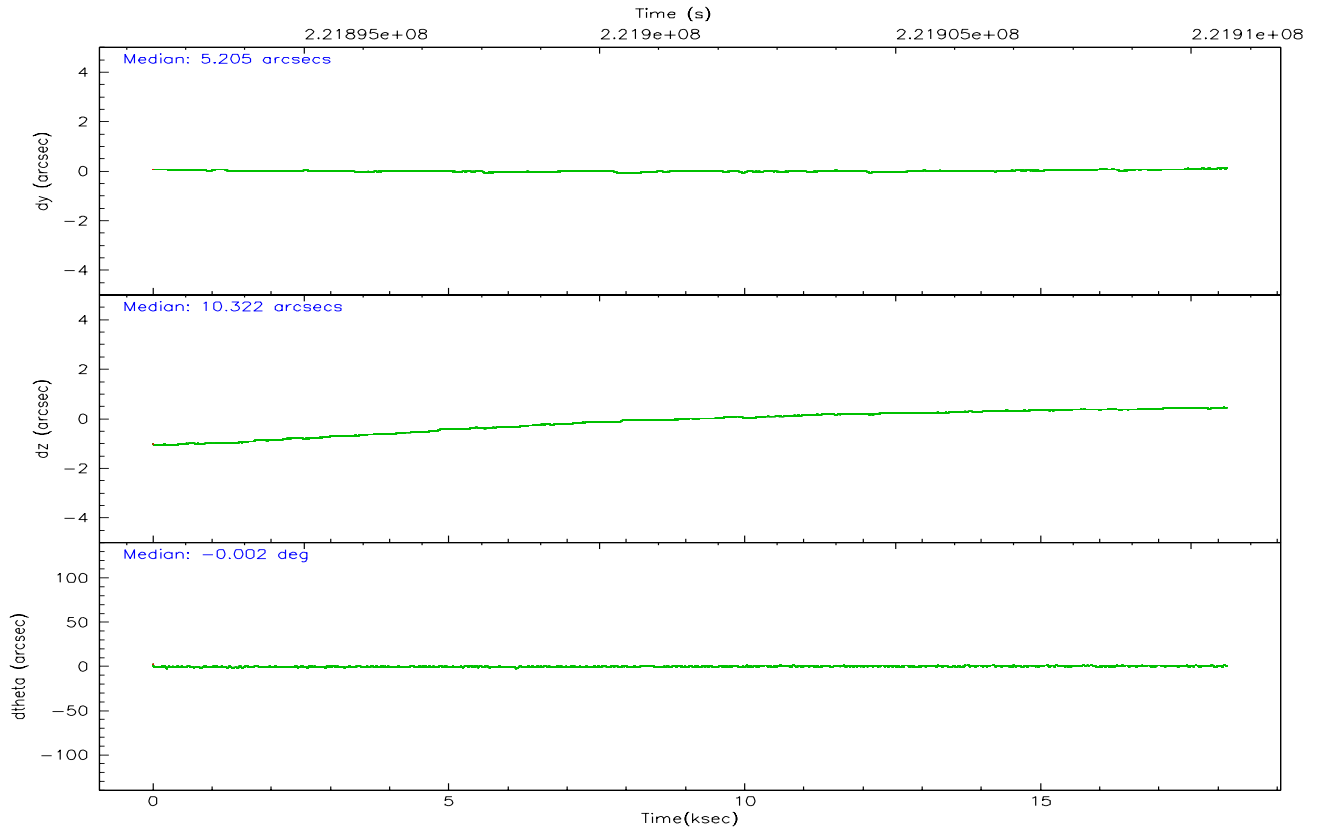
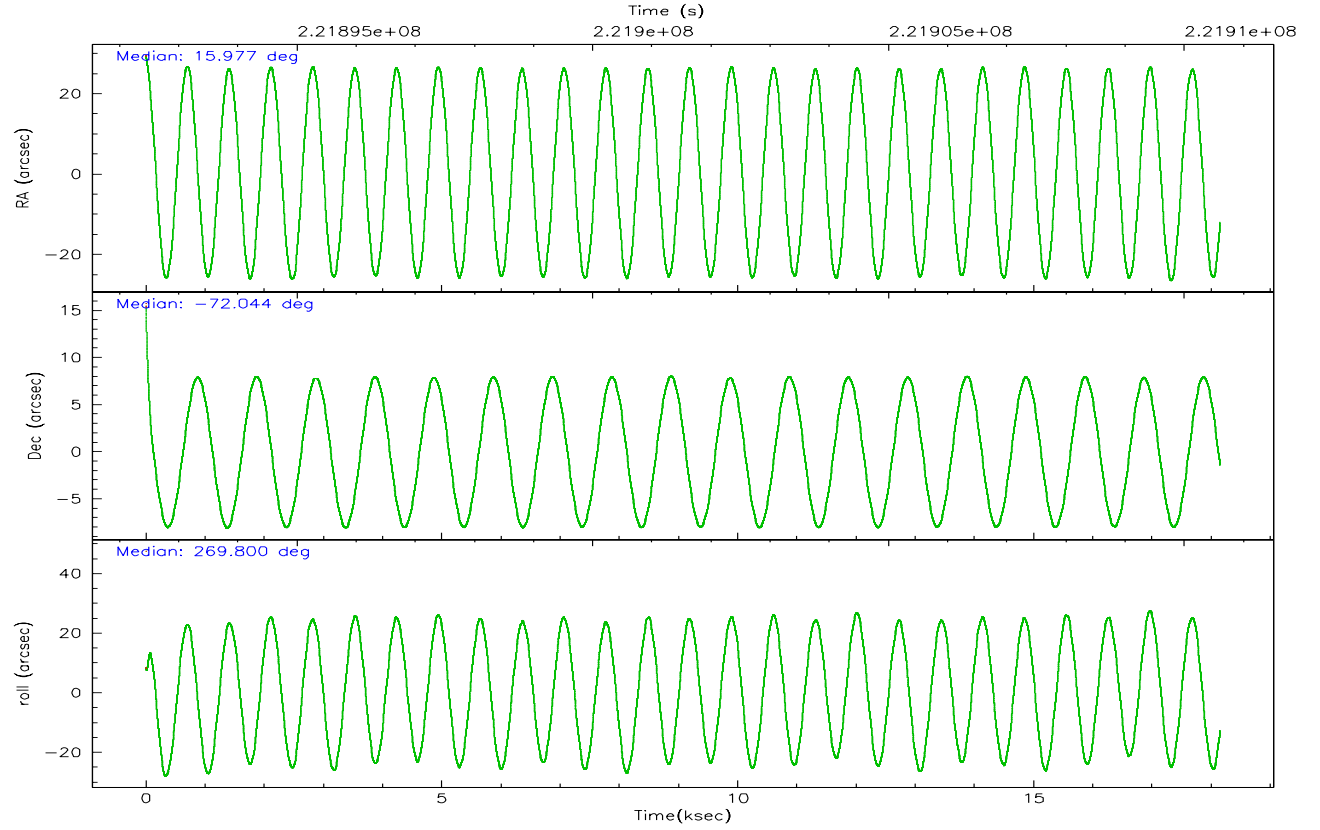
	ccd 0	ccd 1	ccd 2	ccd 3	ccd 6	ccd 7
grade 0 events	4902	4602	5075	57032	4382	3186
	4%	4%	4%	33%	3%	3%
grade 1 events	53	53	61	721	51	71
	0%	0%	0%	0%	0%	0%
grade 2 events	2596	2446	2493	6093	2394	11813
	2%	2%	2%	3%	2%	11%
grade 3 events	1255	1292	1169	2085	1171	2849
	1%	1%	1%	1%	1%	2%
grade 4 events	1150	1232	1166	2032	1245	2709
	1%	1%	1%	1%	1%	2%
grade 5 events	3099	3387	2966	3809	3691	8127
	3%	3%	2%	2%	3%	8%
grade 6 events	1957	2139	1741	2093	2158	25506
	1%	2%	1%	1%	1%	25%
grade 7 events	85681	79978	96583	93998	95823	45962
	85%	84%	86%	55%	86%	45%

2.2 Compared Parameters

Parameter	Planned	Actual	Parameter	Planned	Actual
Instrument	ACIS	ACIS	Obspar format version number	6	6
Detector	ACIS-012367	ACIS-012367	Obspar file type	PREDICTED	ACTUAL
Grating	NONE	NONE	Obspar update status	NONE	UPDATED
Data mode	VFAINT	VFAINT	On-chip summing requested	N	N
Observation mode	POINTING	POINTING	Subarray requested	NONE	NONE
Pointing RA	15.932488	15.97684289963721	Alternating exposures requested	N	N
Pointing Dec	-72.020863	-72.04454612023454	Primary exposure time	0.000000	3.2
Pointing Roll	269.554974	269.8058442645866			
Window start time	215654464.184000	215654464.184000			
Window stop time	223516864.184000	223516864.184000			
SIM focus pos (mm)	-0.782348	-0.7809083437167272			
SIM defocus (mm)	0	0.001439871863259334			
SIM translation stage pos (mm)	-233.592463	-233.5874344608287			
SIM translation stage offset (mm)	0	-0.005018542100998502			
Observation start time	221892604.184000	221891346.44307			
Observation start date	2005-01-12T04:49:00	2005-01-12T04:29:06			
Observation end time	221910604.184000	221910737.39394			
Observation end date	2005-01-12T09:49:00	2005-01-12T09:52:17			
Read mode	TIMED	TIMED			

2.3 Aspect



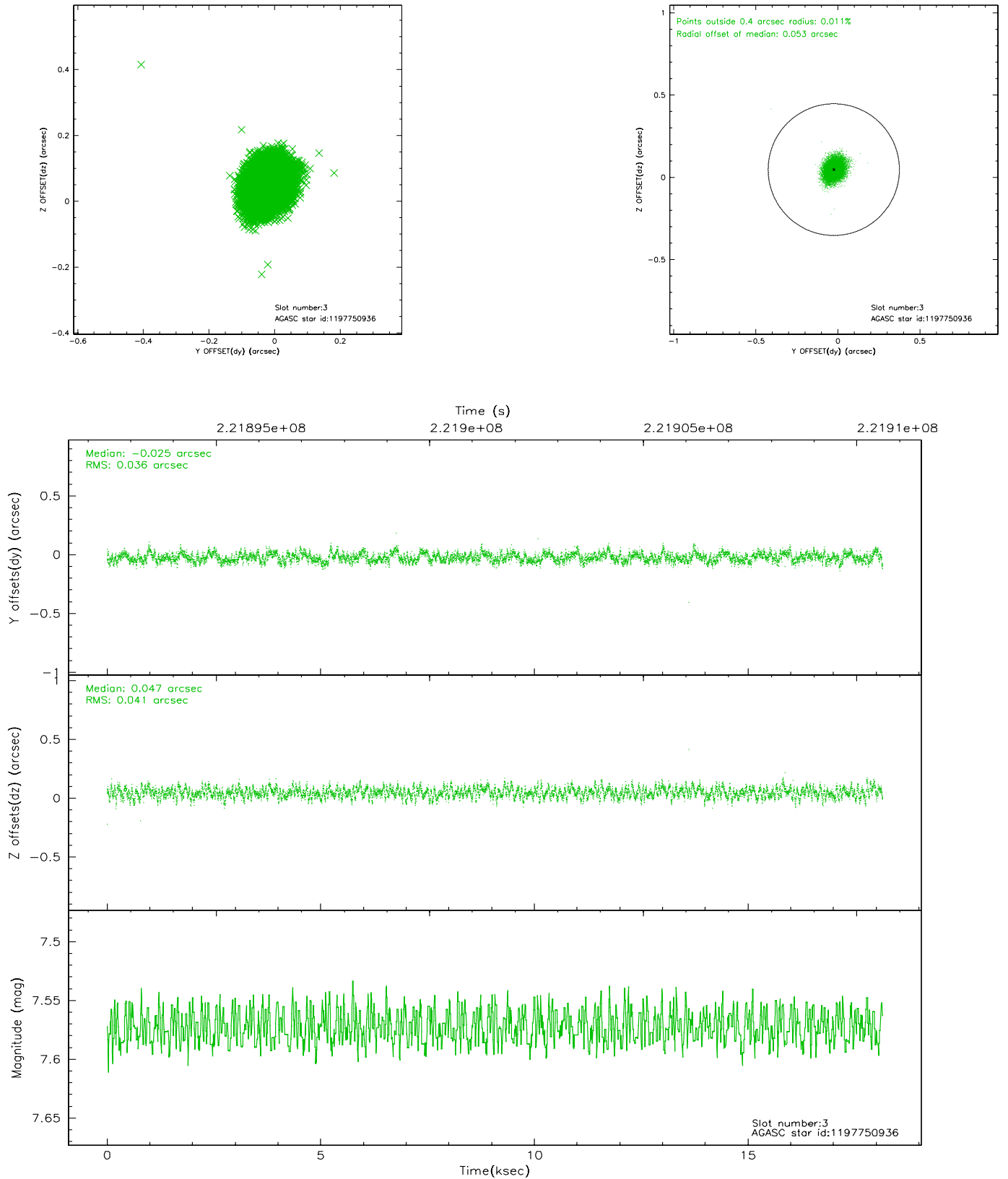


Slot Statistics

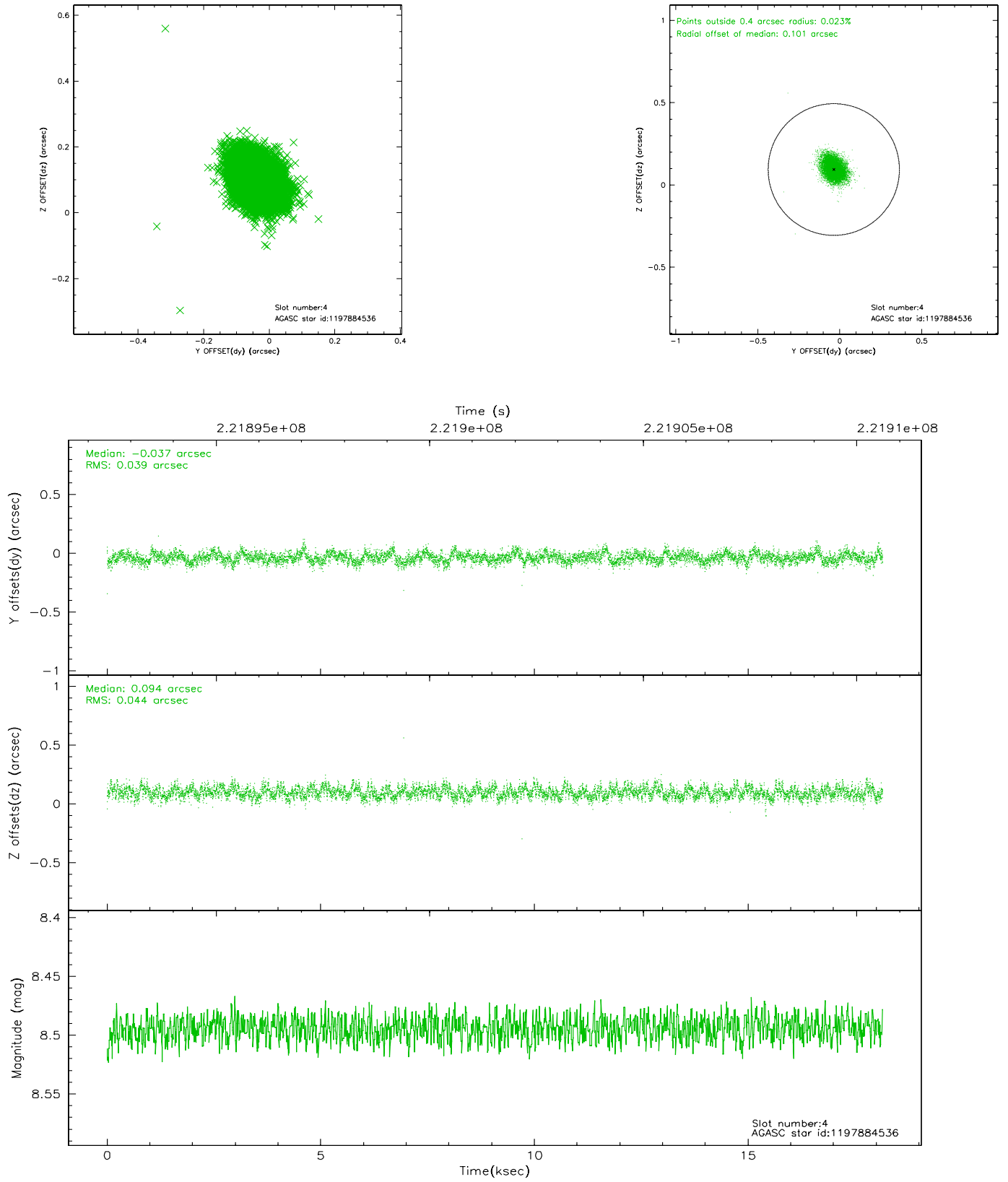
slot	status	id	mag	n_pts	med_dy	med_dz	dr1	dr2	ra	dec	mean_y	mean_z
0	FID	ACIS-I-1	7.24	4429	-0.007	0.005	0.034	0.059	0.000000	0.000000	934.51	-833.65
1	FID	ACIS-I-4	7.18	4429	0.048	0.023	0.024	0.044	0.000000	0.000000	2154.73	1066.05
2	FID	ACIS-I-5	7.22	4429	-0.141	0.043	0.015	0.027	0.000000	0.000000	-1813.34	1064.17
3	GUIDE	1197750936	7.57	8856	-0.025	0.047	0.058	0.092	15.387940	-71.549550	-1688.54	-633.44
4	GUIDE	1197884536	8.49	8856	-0.037	0.094	0.062	0.100	17.160729	-71.835289	-664.80	1373.40
5	GUIDE	1197884712	8.30	8854	0.105	-0.049	0.067	0.102	16.087398	-72.252690	833.76	176.87
6	GUIDE	1197885328	7.23	8857	-0.011	-0.090	0.064	0.097	16.283090	-71.733943	-1034.73	388.12
7	GUIDE	1197885104	9.38	8850	-0.025	-0.007	0.134	0.199	17.845067	-72.189368	623.95	2110.67

2.4 Star Slots

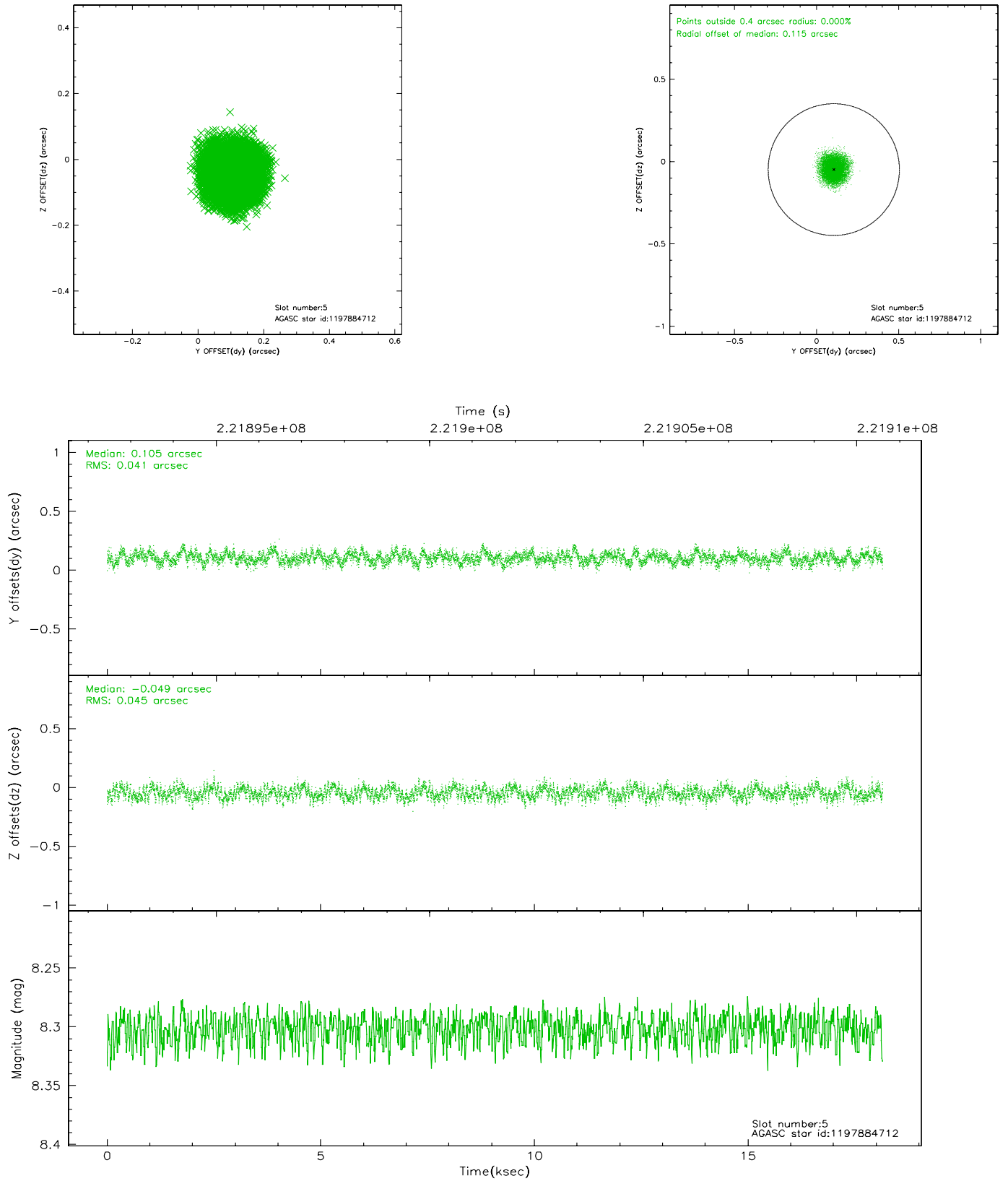
2.4.1 Slot 3



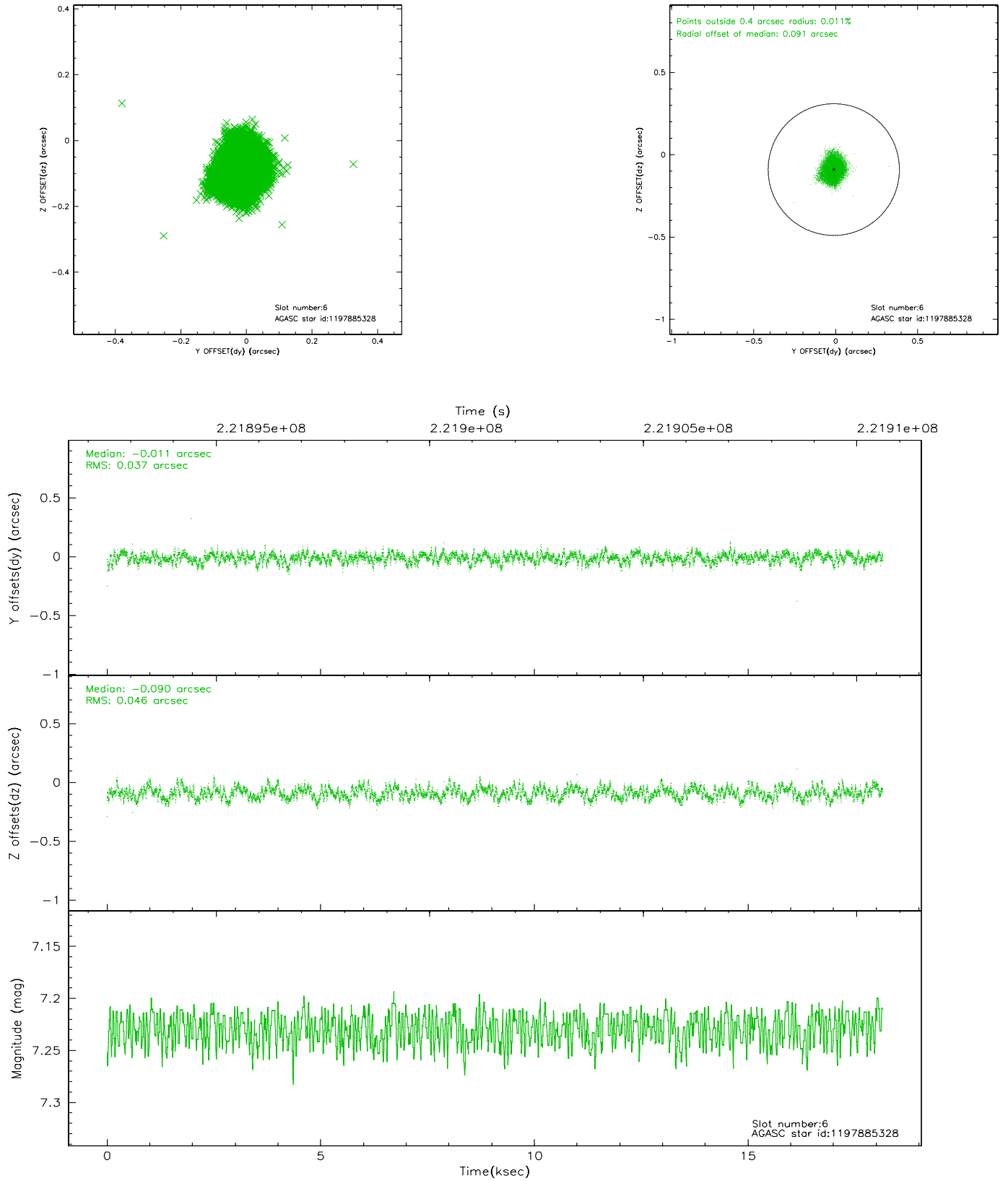
2.4.2 Slot 4



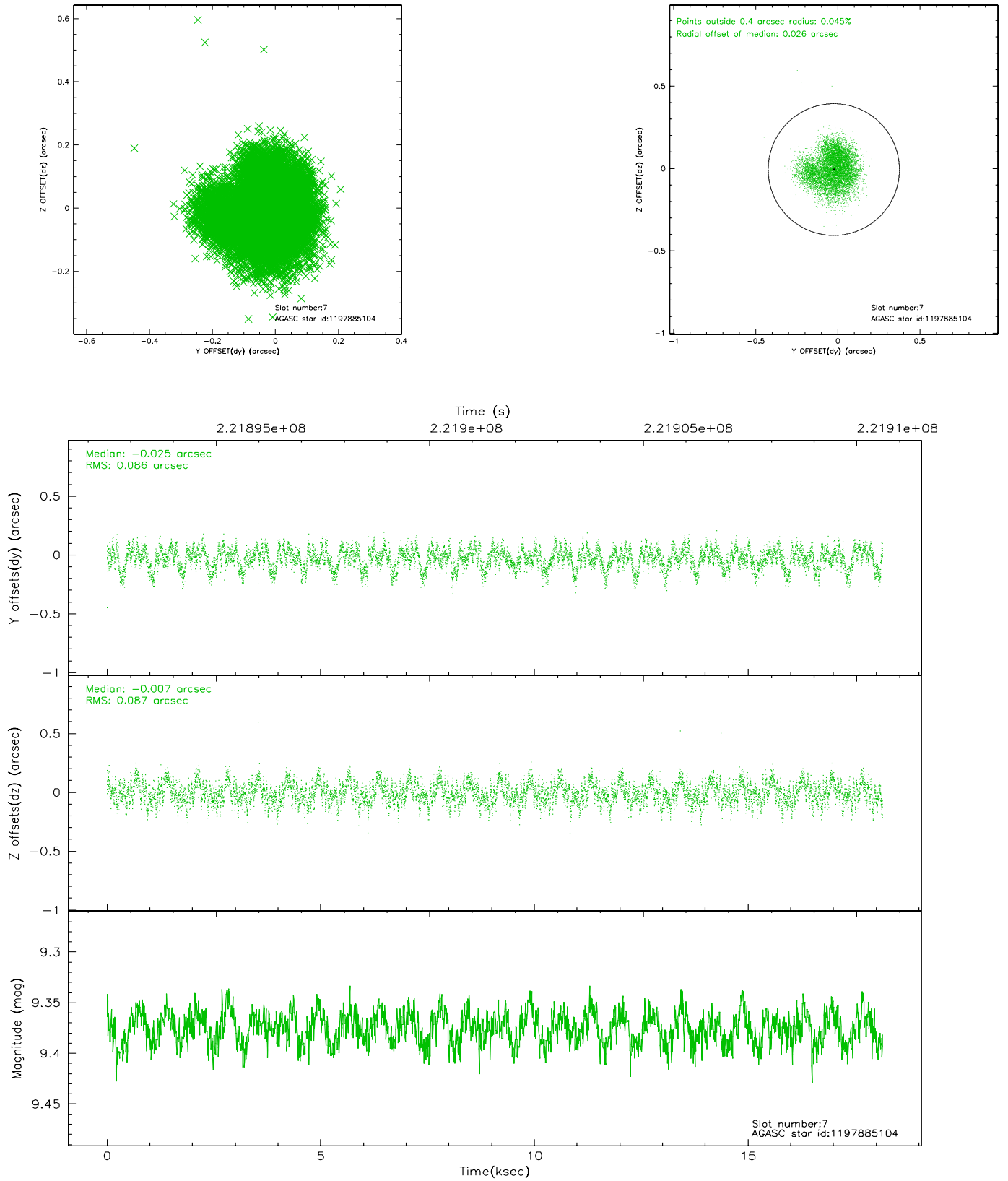
2.4.3 Slot 5



2.4.4 Slot 6

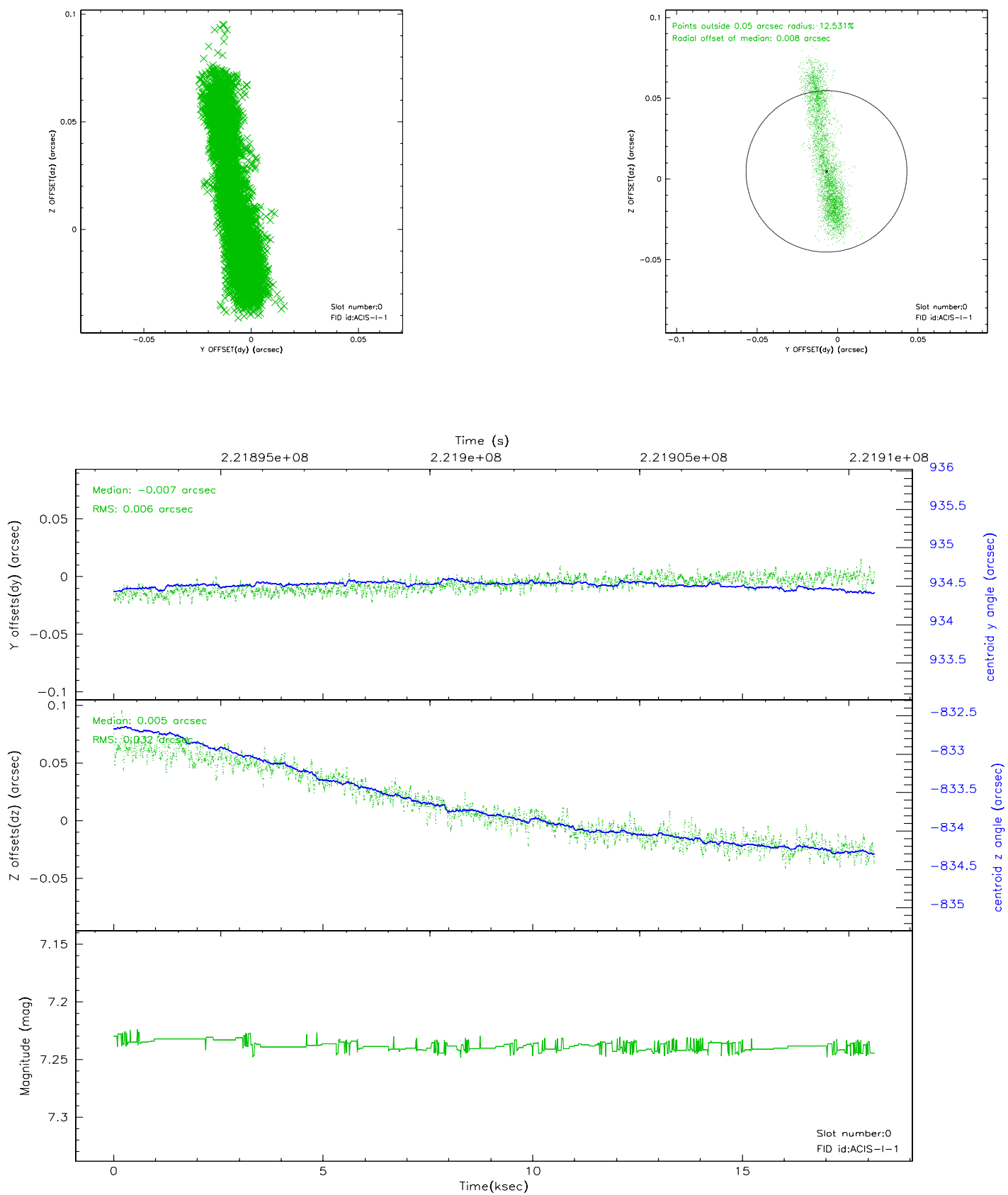


2.4.5 Slot 7

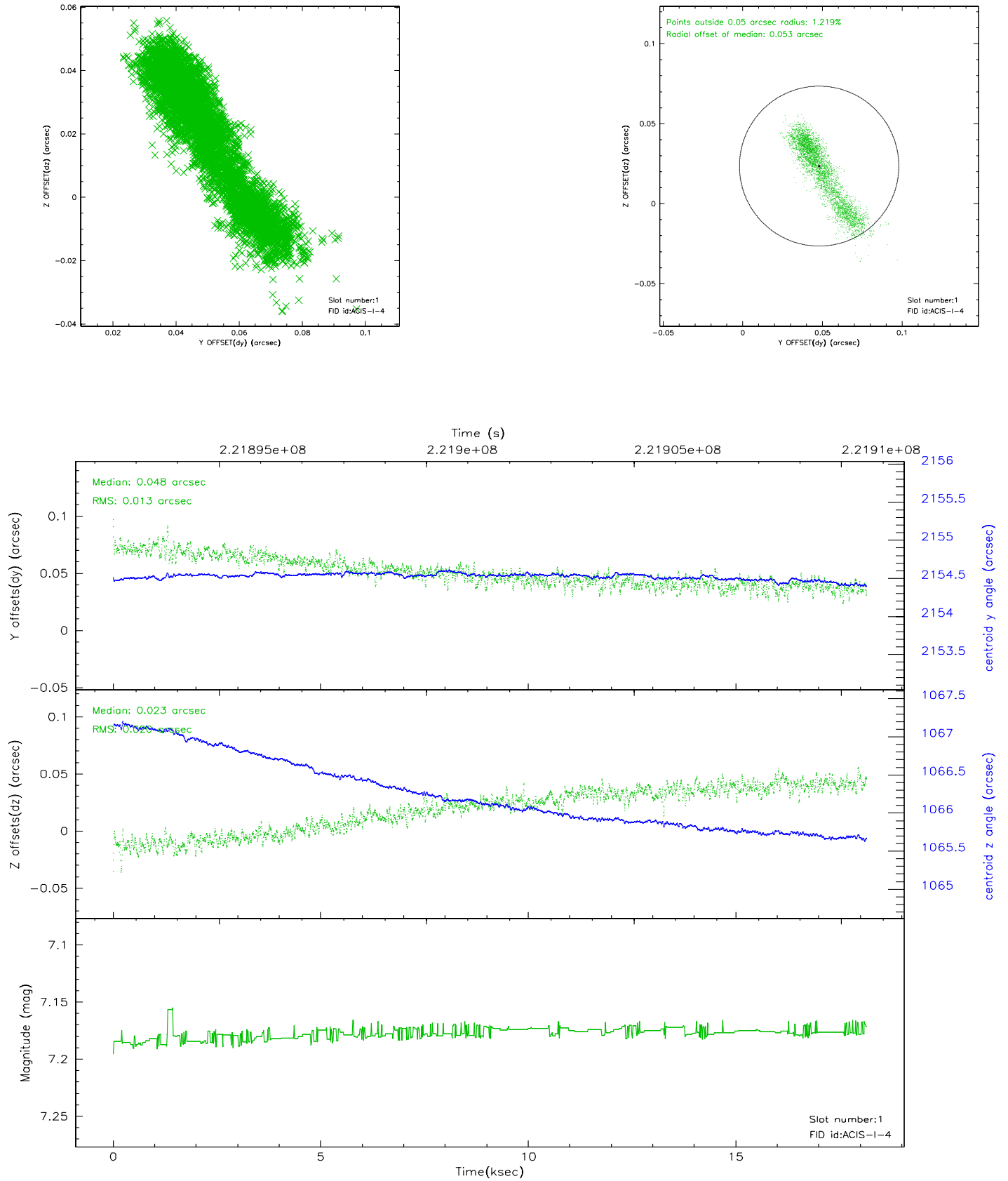


2.5 FID Slots

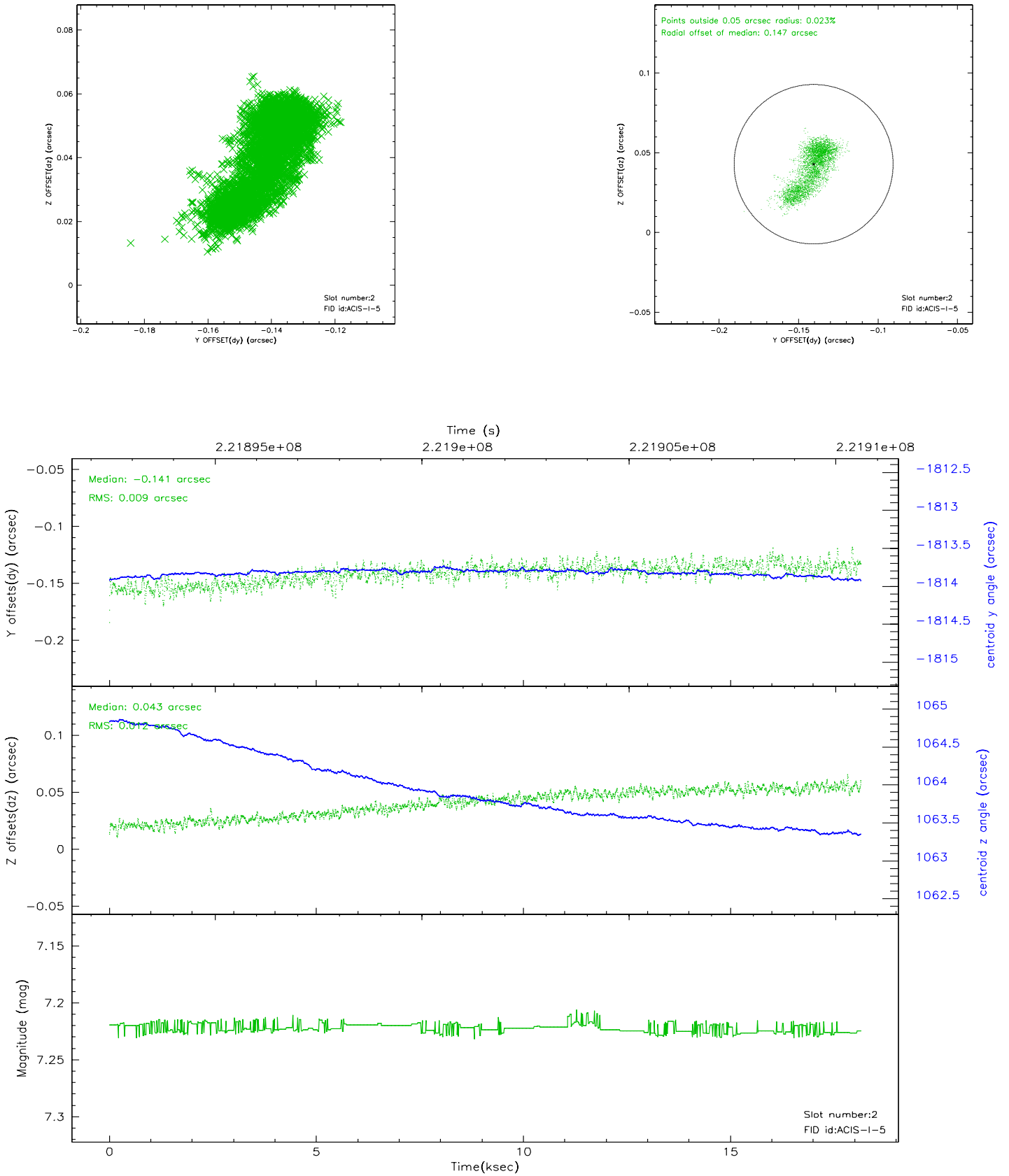
2.5.1 Slot 0



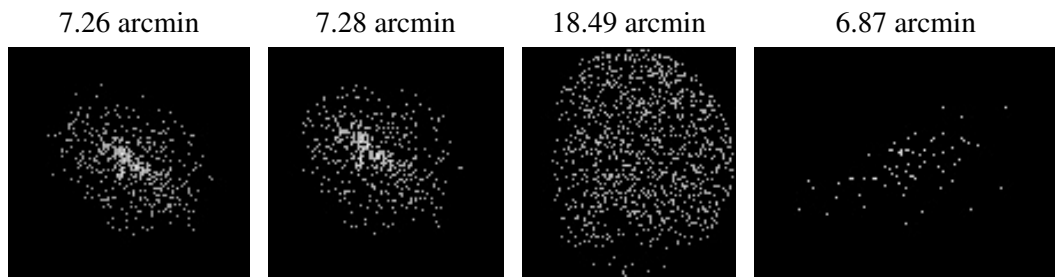
2.5.2 Slot 1



2.5.3 Slot 2



3 Point Sources



A Summary

A.1 Status

V&V Scientist	Beth Sundheim
V&V Date (YYYY-MM-DD)	2006.02.16
V&V Edition	1
V&V Disposition and Status	OK
V&V Charge Time	18.15039

A.2 Comments

Charge time:

Using existing charge time of 18.15039.