

V&V Reference Report

L2 ASCDS Version : 7.6.7

Observation 6043 - L2 Version 002
Chandra X-Ray Center

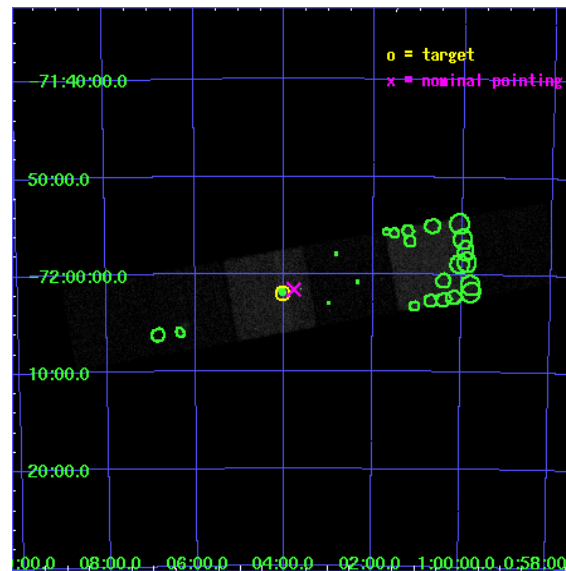
L2 Processing Date: Feb 28 2006

Contents

1	Front	2
2	OBI	3
2.1	OBI	3
2.1.1	Images	3
2.1.2	Bias	3
2.1.3	Parameters	4
2.1.4	Events	4
2.2	Compared Parameters	5
2.3	Aspect	6
2.4	Star Slots	9
2.4.1	Slot 3	9
2.4.2	Slot 4	10
2.4.3	Slot 5	11
2.4.4	Slot 6	12
2.4.5	Slot 7	13
2.5	FID Slots	14
2.5.1	Slot 0	14
2.5.2	Slot 1	15
2.5.3	Slot 2	16
3	Point Sources	17
A	Summary	18
A.1	Status	18
A.2	Comments	18

1 Front

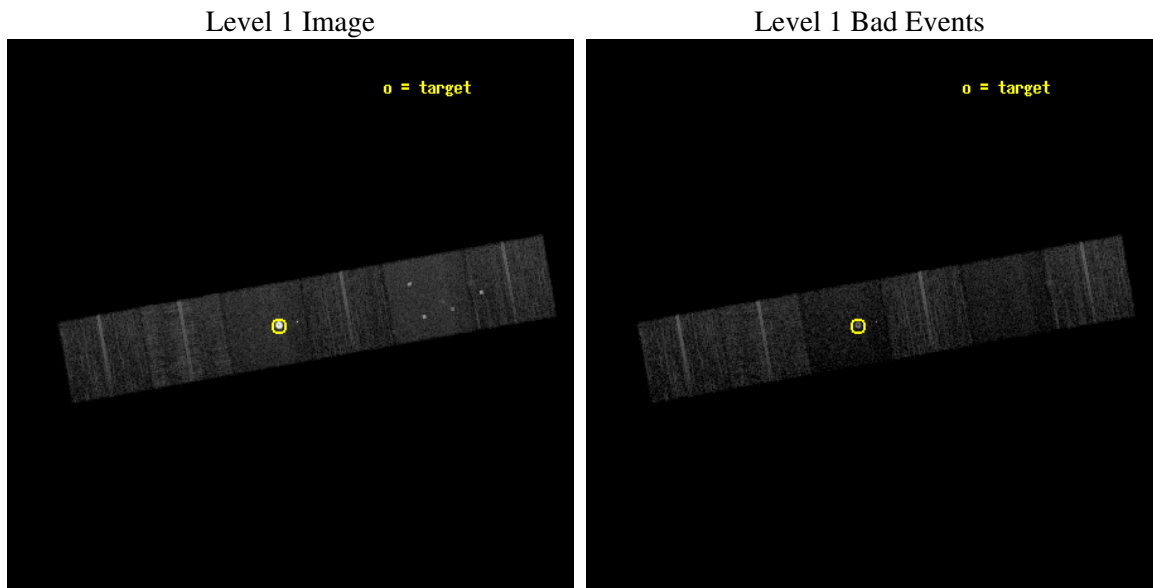
seq_num	590370
obs_id	6043
title	AO6B ACIS-S Calibration Observations of E0102-72
observer	Dr. CXC Calibration
object	E0102-72[S3,-120,-1,0,0]
dtcycle	0
cycle	P
ra_targ	16.01
dec_targ	-72.032028
ra_nom	15.945094558886
dec_nom	-72.026768128525
roll_nom	169.86930031288
revision	2
ontime	7951.9999703765
livetime	7851.3069586321
ontime4	7951.9999703765
ontime5	7951.9999703765
ontime6	7951.9999703765
ontime7	7951.9999703765
ontime8	7951.9999703765
ontime9	7951.9999703765
l2events	121282



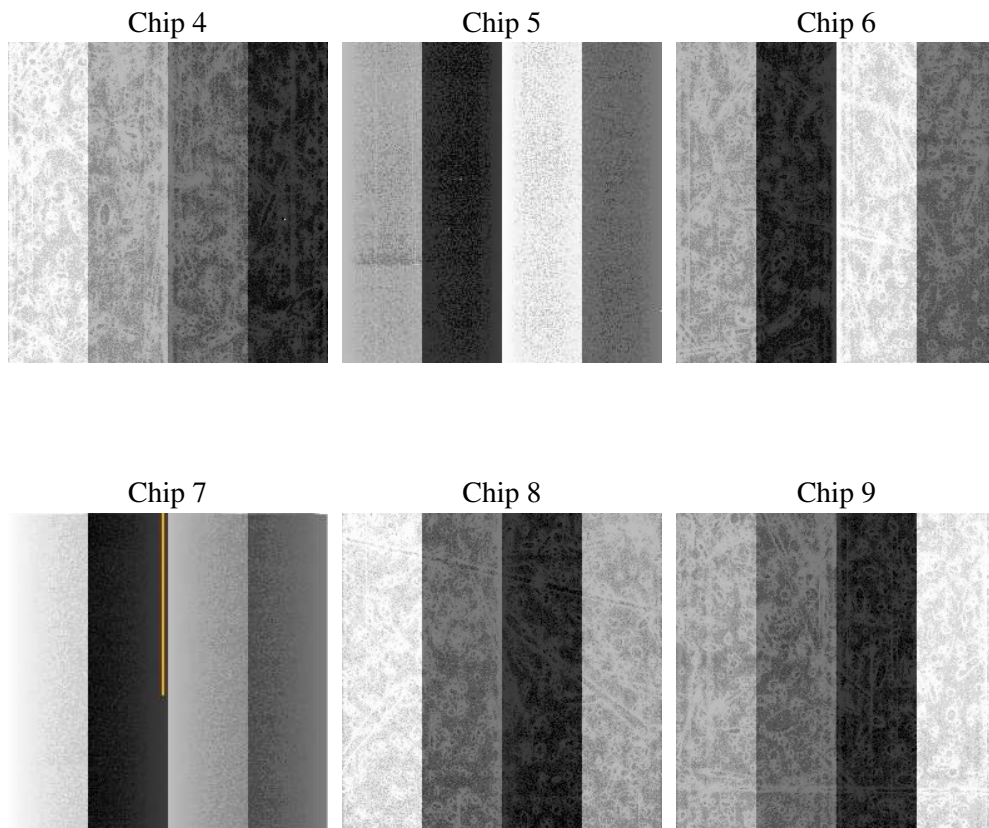
2 OBI

2.1 OBI

2.1.1 Images



2.1.2 Bias



2.1.3 Parameters

obi_num	1
ascdsver	7.6.7
caldsver	3.2.1
date	2006-02-28T23:19:58
revision	2

sched_exp_time	8000.000000
ontime	7956.6647219062
ontime4	7956.6647219062
ontime5	7956.6647418141
ontime6	7956.6647219062
ontime7	7956.6647219062
ontime8	7956.6647219062
ontime9	7956.6647219062
l1events	375924

2.1.4 Events

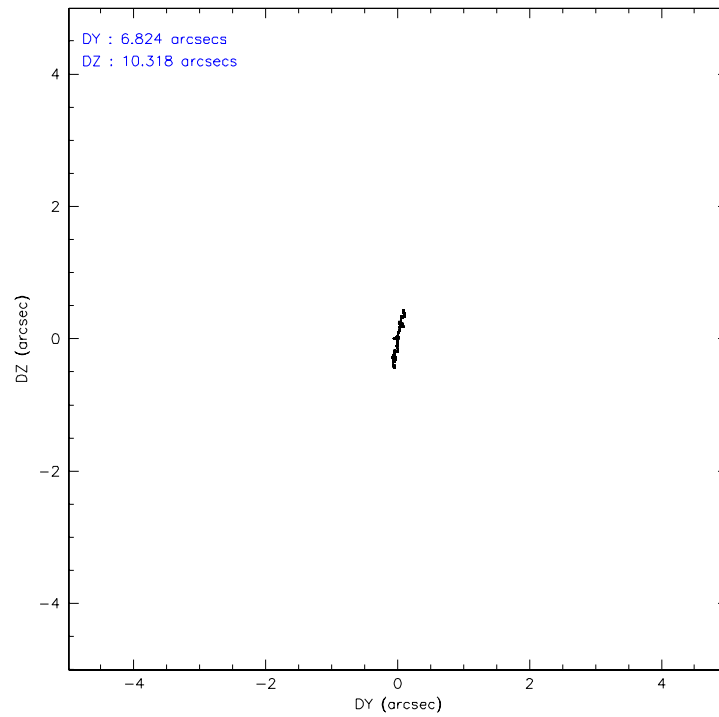
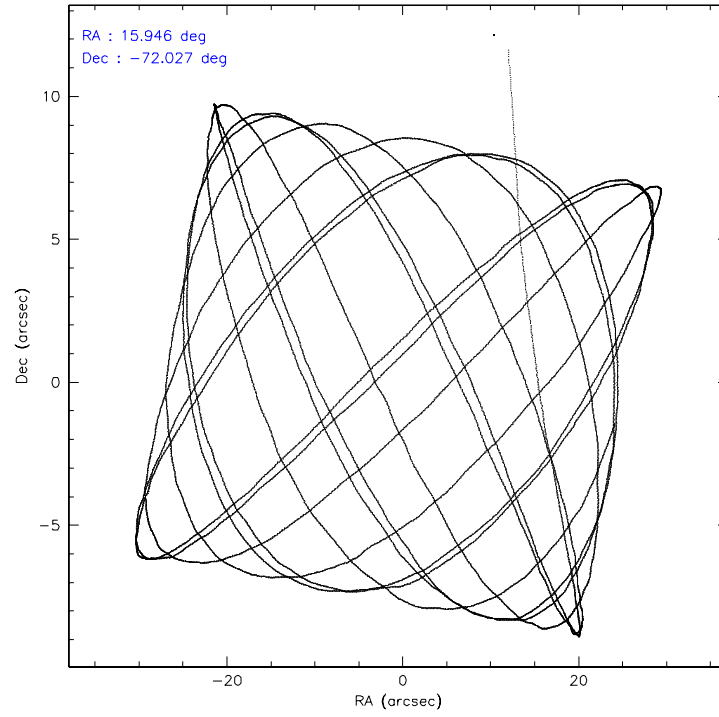
	ccd 4	ccd 5	ccd 6	ccd 7	ccd 8	ccd 9
level 1 events	57579	60881	49620	102560	59516	45768
rejected events	51165	28591	44446	26387	45099	40995
rejected %	88%	46%	89%	25%	75%	89%

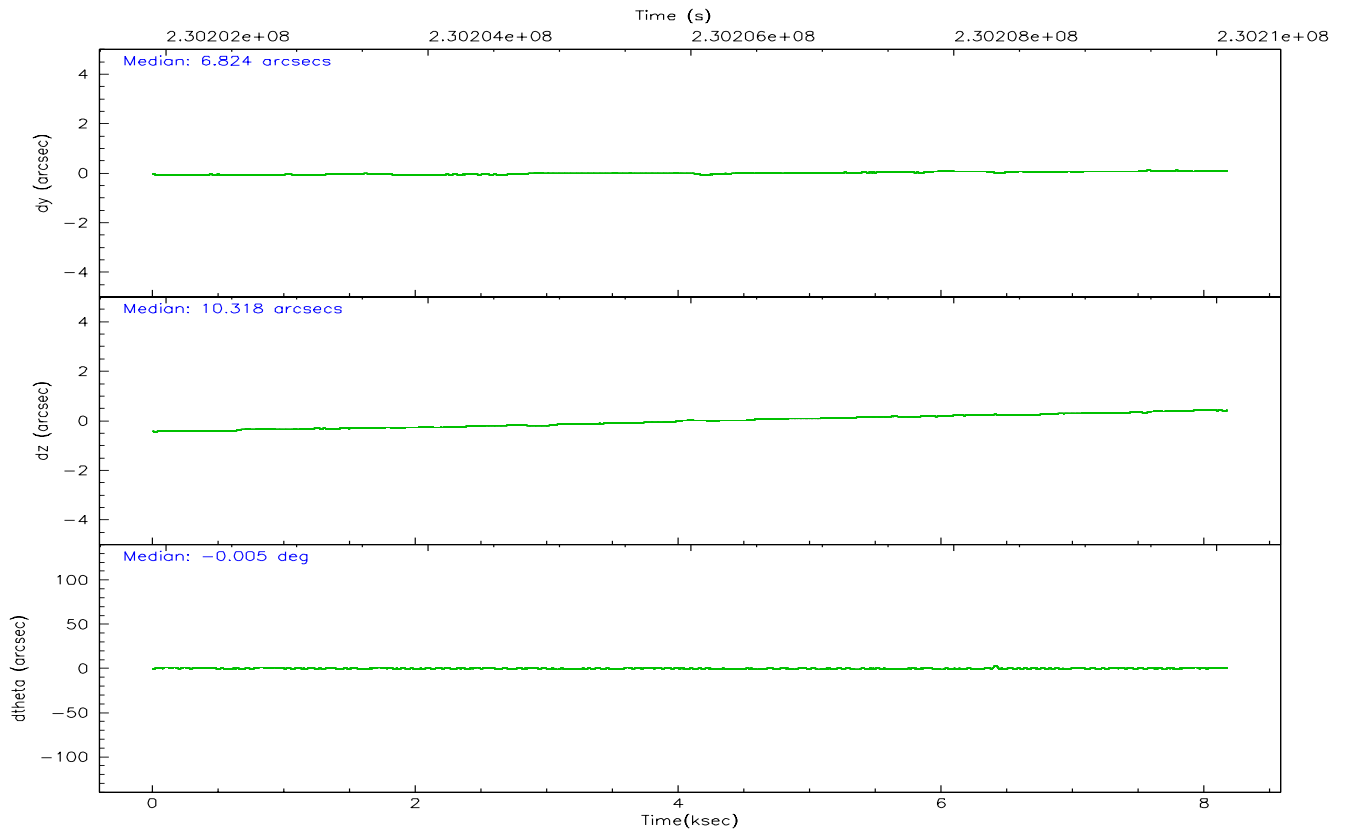
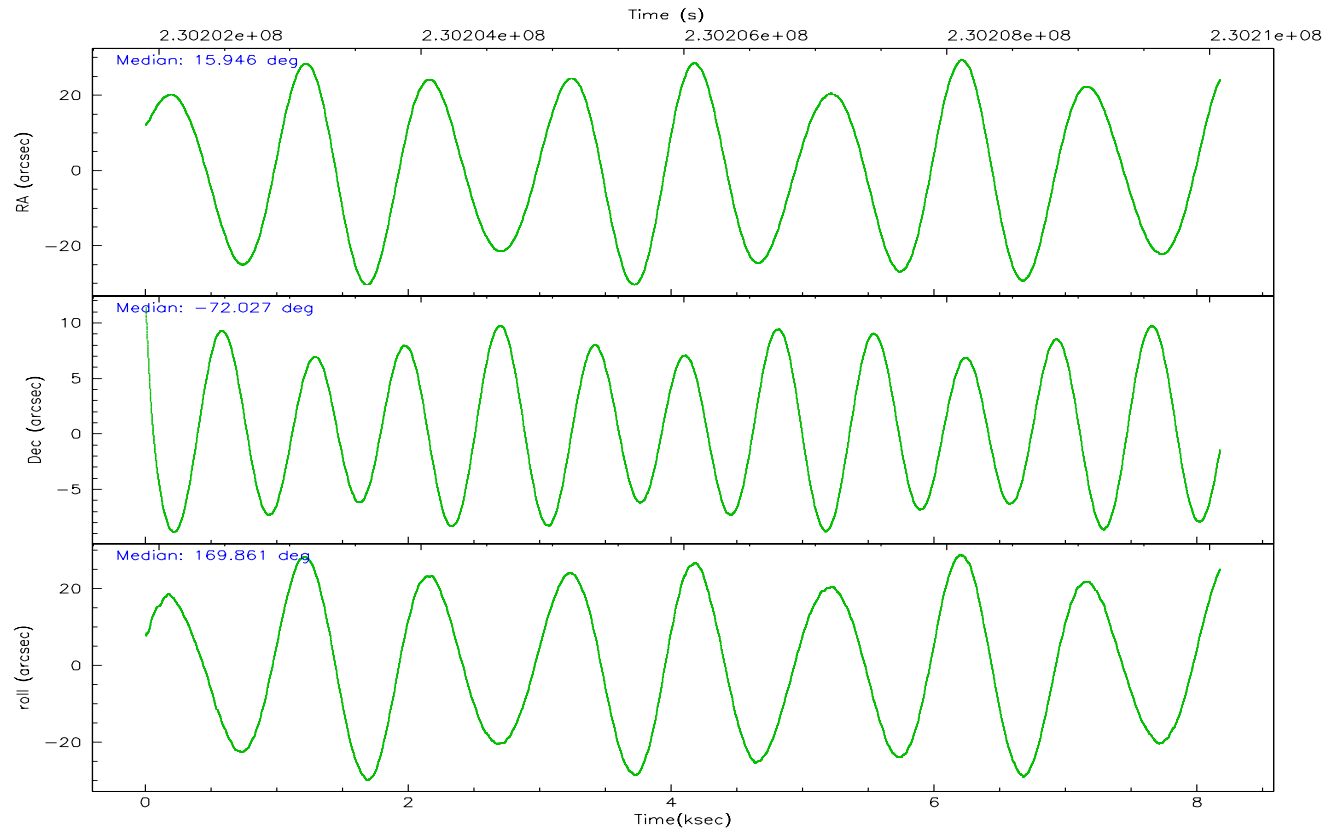
	ccd 4	ccd 5	ccd 6	ccd 7	ccd 8	ccd 9
grade 0 events	3351	4703	2035	20836	4394	1630
	5%	7%	4%	20%	7%	3%
grade 1 events	53	62	26	347	41	24
	0%	0%	0%	0%	0%	0%
grade 2 events	1198	9558	1125	20613	3202	1048
	2%	15%	2%	20%	5%	2%
grade 3 events	581	886	539	7832	1633	566
	1%	1%	1%	7%	2%	1%
grade 4 events	542	803	536	7649	1458	563
	0%	1%	1%	7%	2%	1%
grade 5 events	1643	3143	1619	4574	2519	1829
	2%	5%	3%	4%	4%	3%
grade 6 events	749	16373	948	19307	3738	976
	1%	26%	1%	18%	6%	2%
grade 7 events	49462	25353	42792	21402	42531	39132
	85%	41%	86%	20%	71%	85%

2.2 Compared Parameters

Parameter	Planned	Actual	Parameter	Planned	Actual
Instrument	ACIS	ACIS	Obspar format version number	6	6
Detector	ACIS-456789	ACIS-456789	Obspar file type	PREDICTED	ACTUAL
Grating	NONE	NONE	Obspar update status	NONE	UPDATED
Data mode	VFAINT	VFAINT	On-chip summing requested	N	N
Observation mode	POINTING	POINTING	Subarray requested	NONE	NONE
Pointing RA	16.027507	15.94509455888624	Alternating exposures requested	N	N
Pointing Dec	-72.017093	-72.02676812852543	Primary exposure time	0.000000	3.2
Pointing Roll	169.791063	169.8693003128778			
Window start time	228700864.184000	228700864.184000			
Window stop time	231206464.184000	231206464.184000			
SIM focus pos (mm)	-0.684267	-0.6828225247311905			
SIM defocus (mm)	0	0.001444936568705701			
SIM translation stage pos (mm)	-190.132523	-190.1400660498719			
SIM translation stage offset (mm)	0	0.00754346686406393			
Observation start time	230202079.184000	230201060.76944			
Observation start date	2005-04-18T09:00:15	2005-04-18T08:44:20			
Observation end time	230210079.184000	230210809.54489			
Observation end date	2005-04-18T11:13:35	2005-04-18T11:26:49			
Read mode	TIMED	TIMED			

2.3 Aspect



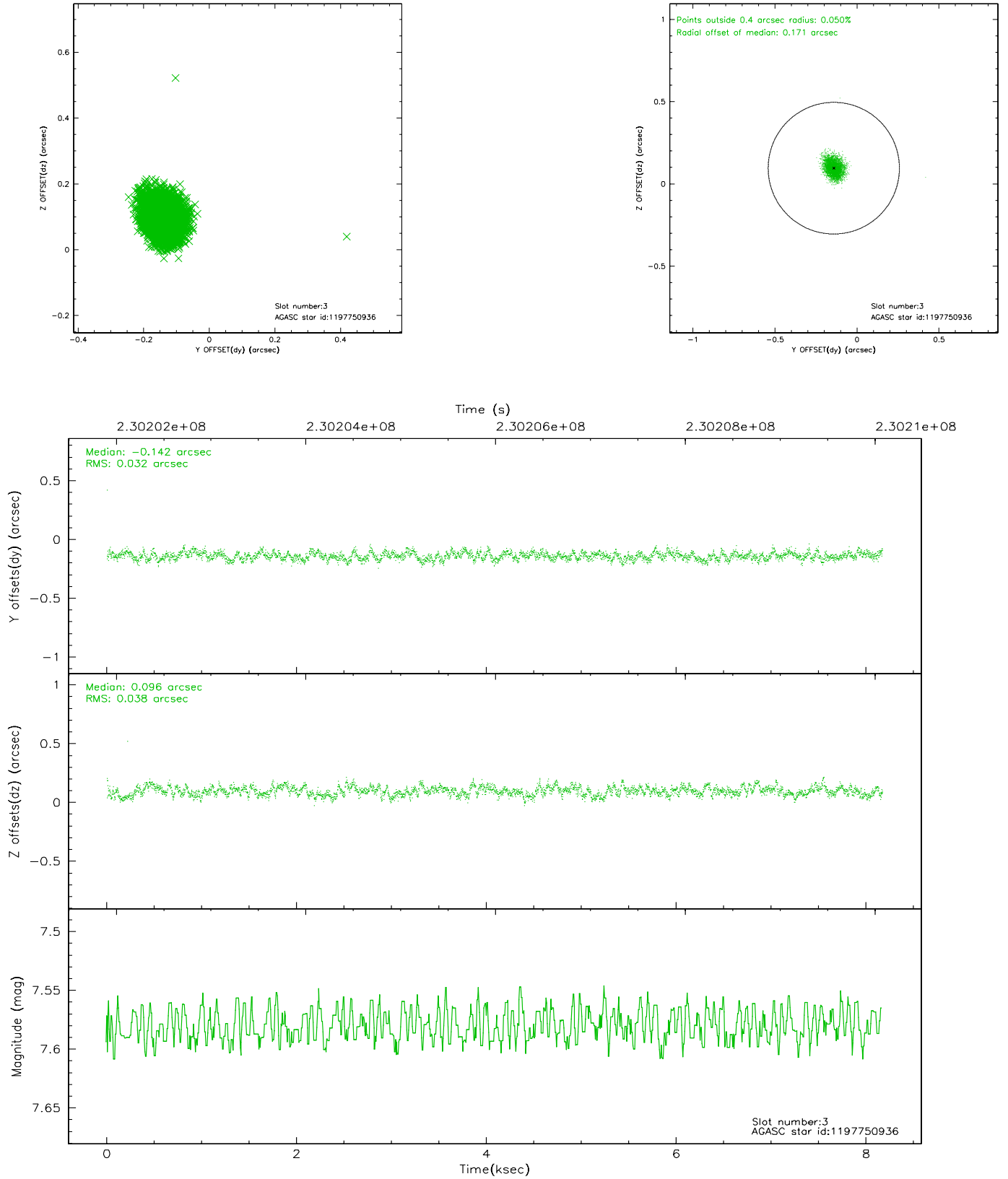


Slot Statistics

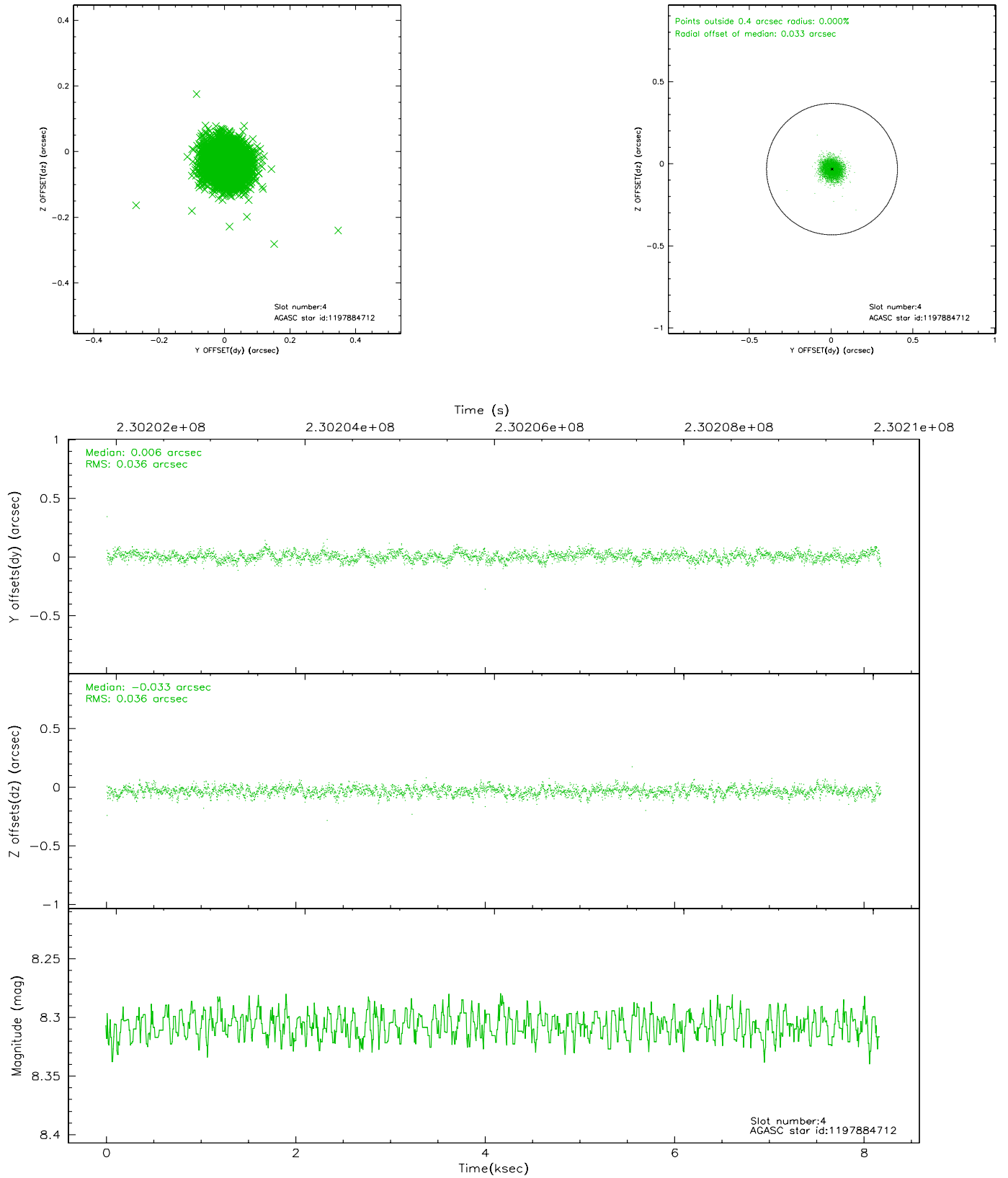
slot	status	id	mag	n_pts	med_dy	med_dz	dr1	dr2	ra	dec	mean_y	mean_z
0	FID	ACIS-S-2	7.10	1993	-0.053	-0.002	0.008	0.013	0.000000	0.000000	-759.59	-1731.57
1	FID	ACIS-S-4	7.20	1993	0.060	0.026	0.005	0.010	0.000000	0.000000	2153.45	176.29
2	FID	ACIS-S-5	7.23	1993	-0.038	-0.015	0.007	0.012	0.000000	0.000000	-1811.57	170.62
3	GUIDE	1197750936	7.58	3986	-0.142	0.096	0.052	0.083	15.387940	-71.549550	1015.18	-1522.91
4	GUIDE	1197884712	8.31	3985	0.006	-0.033	0.053	0.085	16.087398	-72.252690	-214.53	822.87
5	GUIDE	1197885104	9.35	3984	0.126	0.003	0.088	0.146	17.845067	-72.189368	-2084.12	285.88
6	GUIDE	1197885328	7.23	3986	-0.022	0.083	0.055	0.085	16.283090	-71.733943	-103.75	-1053.73
7	GUIDE	1198283128	7.78	3985	0.033	-0.152	0.045	0.073	17.272580	-72.642428	-1717.40	1991.74

2.4 Star Slots

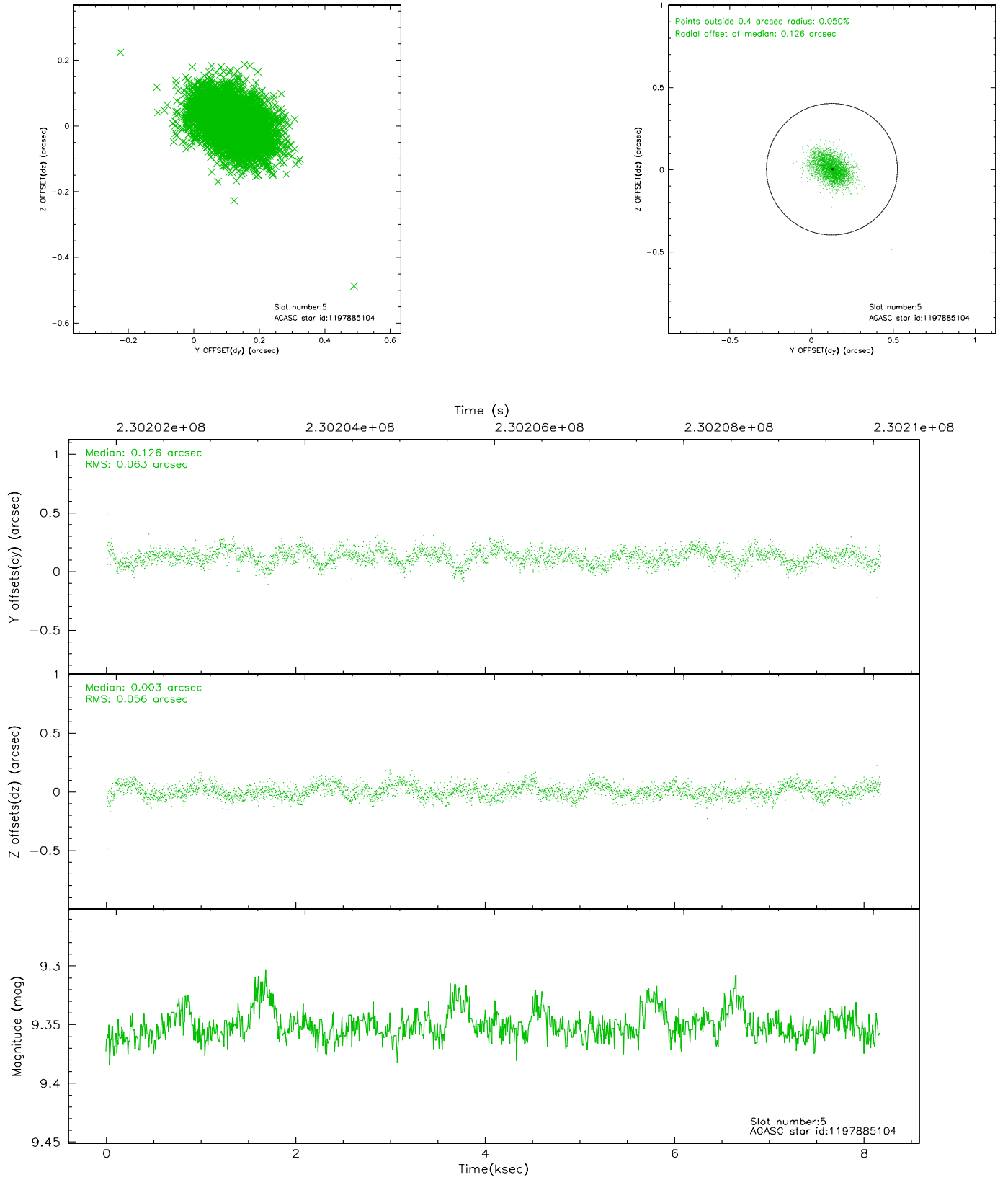
2.4.1 Slot 3



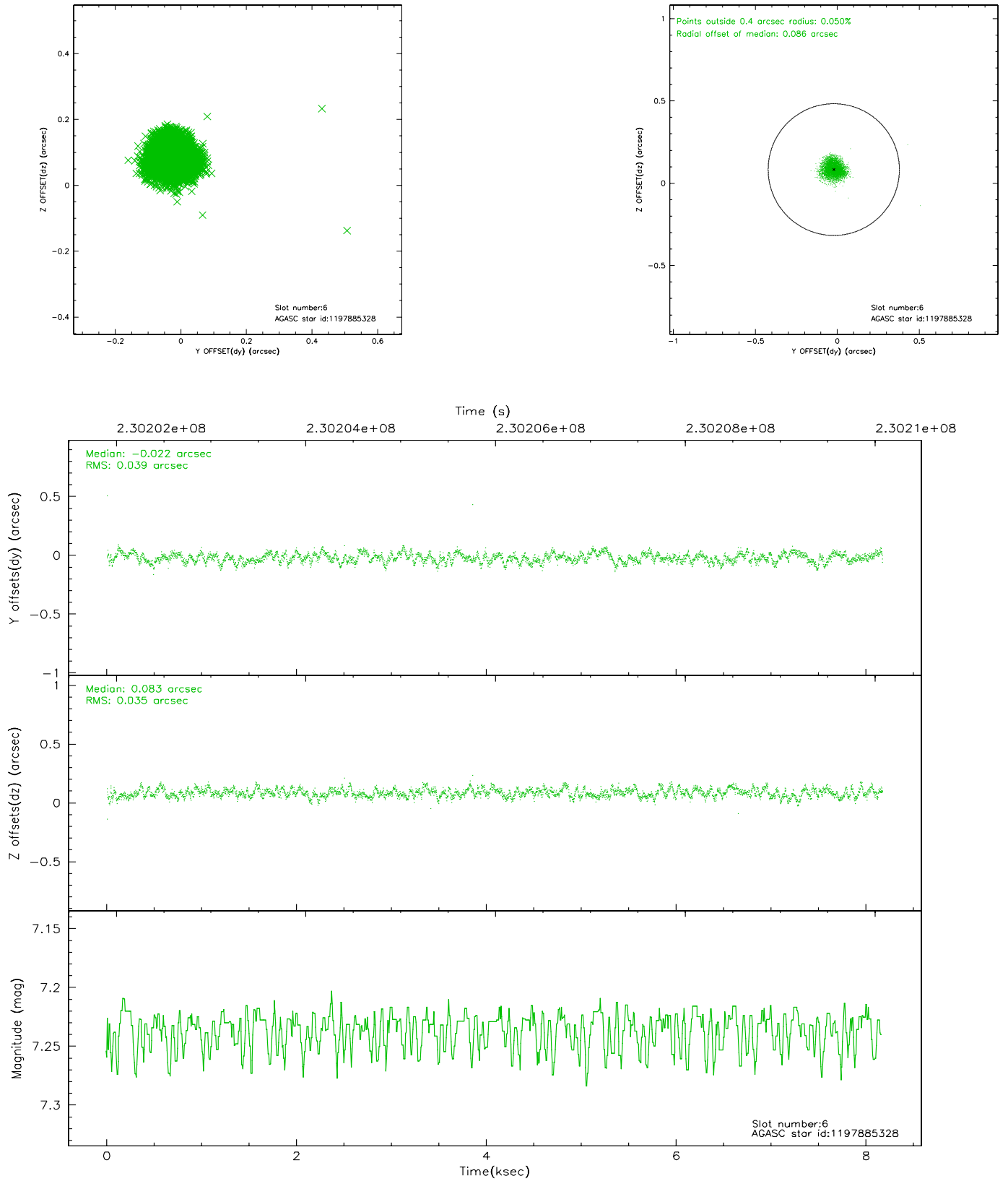
2.4.2 Slot 4



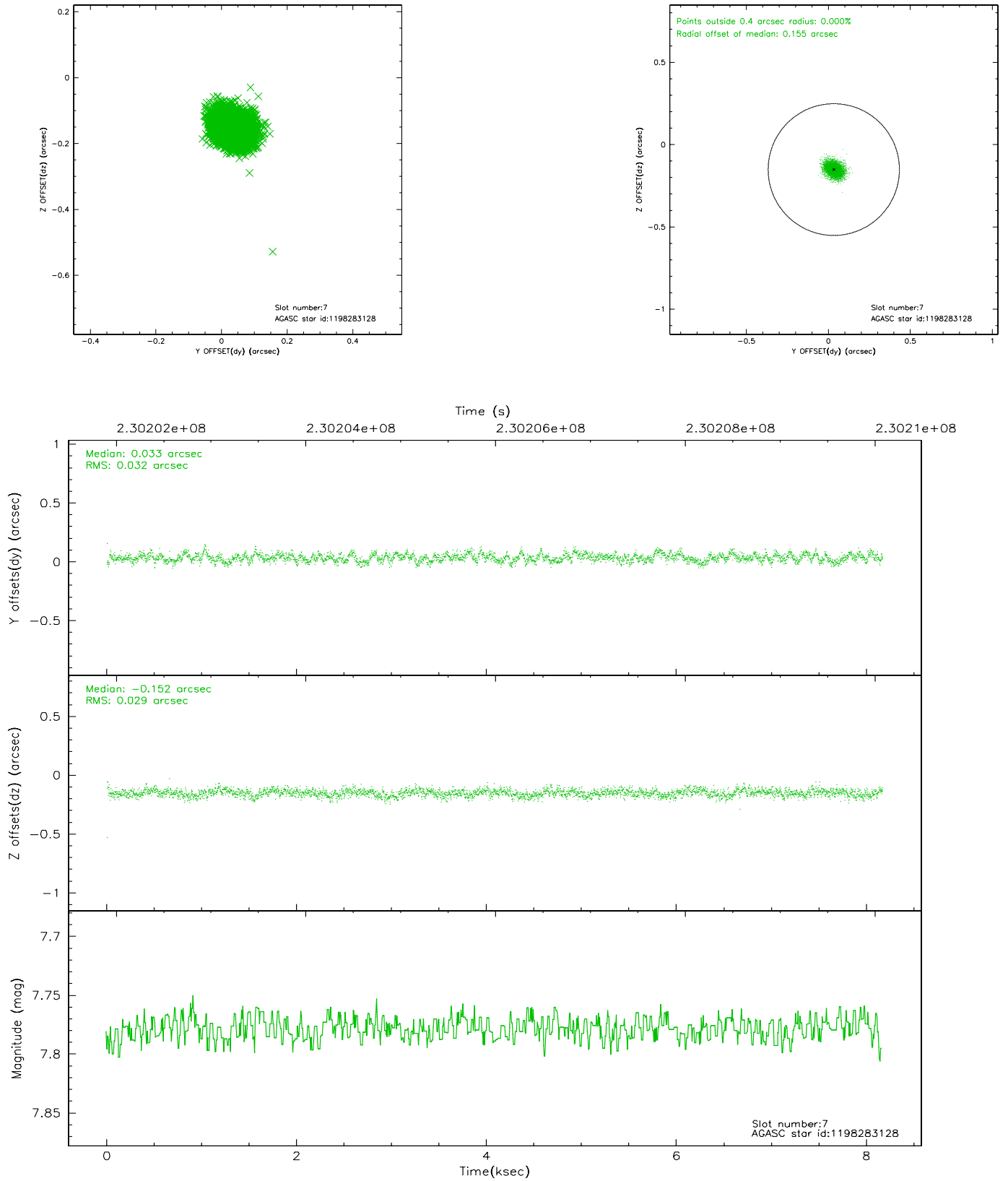
2.4.3 Slot 5



2.4.4 Slot 6

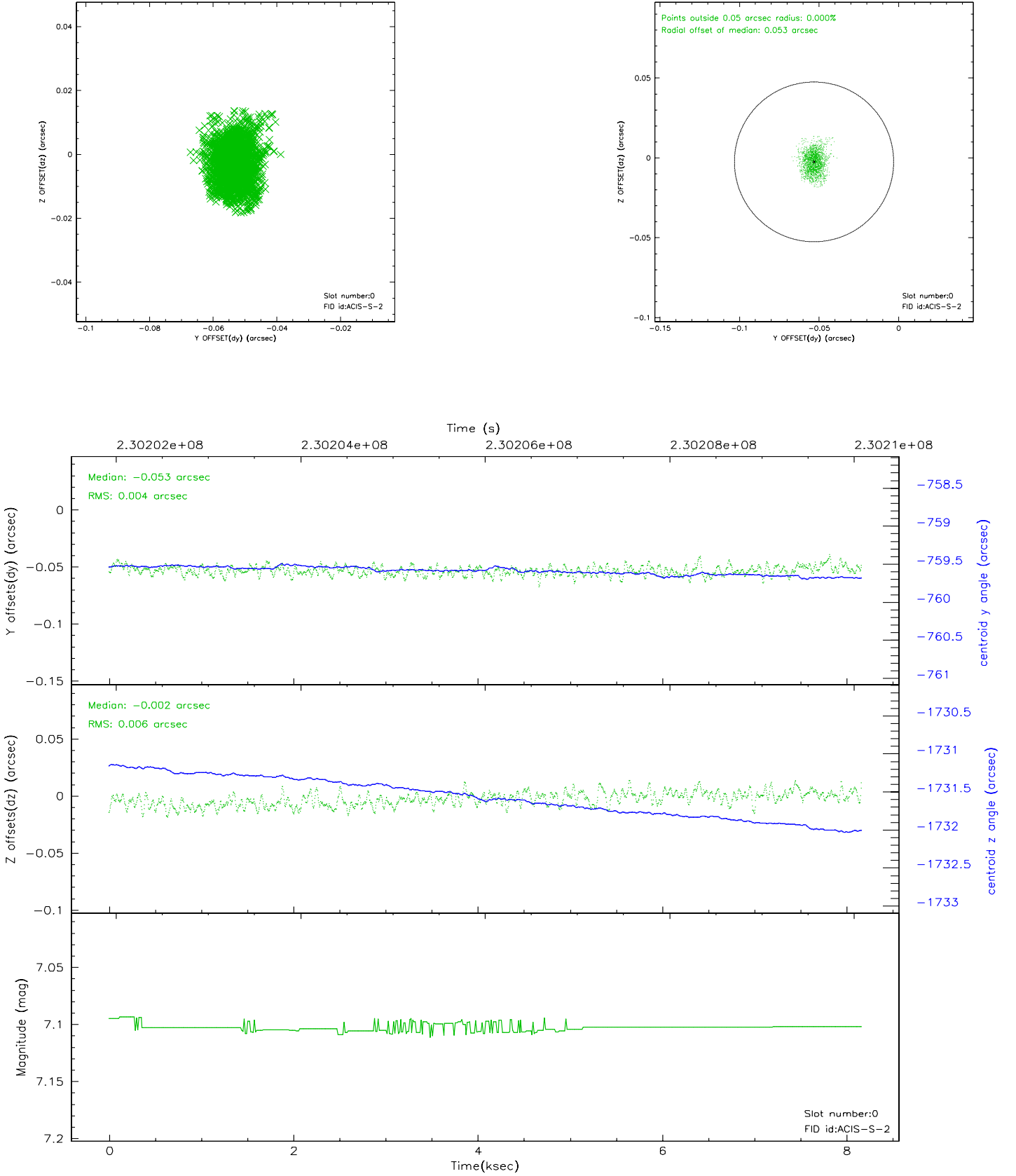


2.4.5 Slot 7

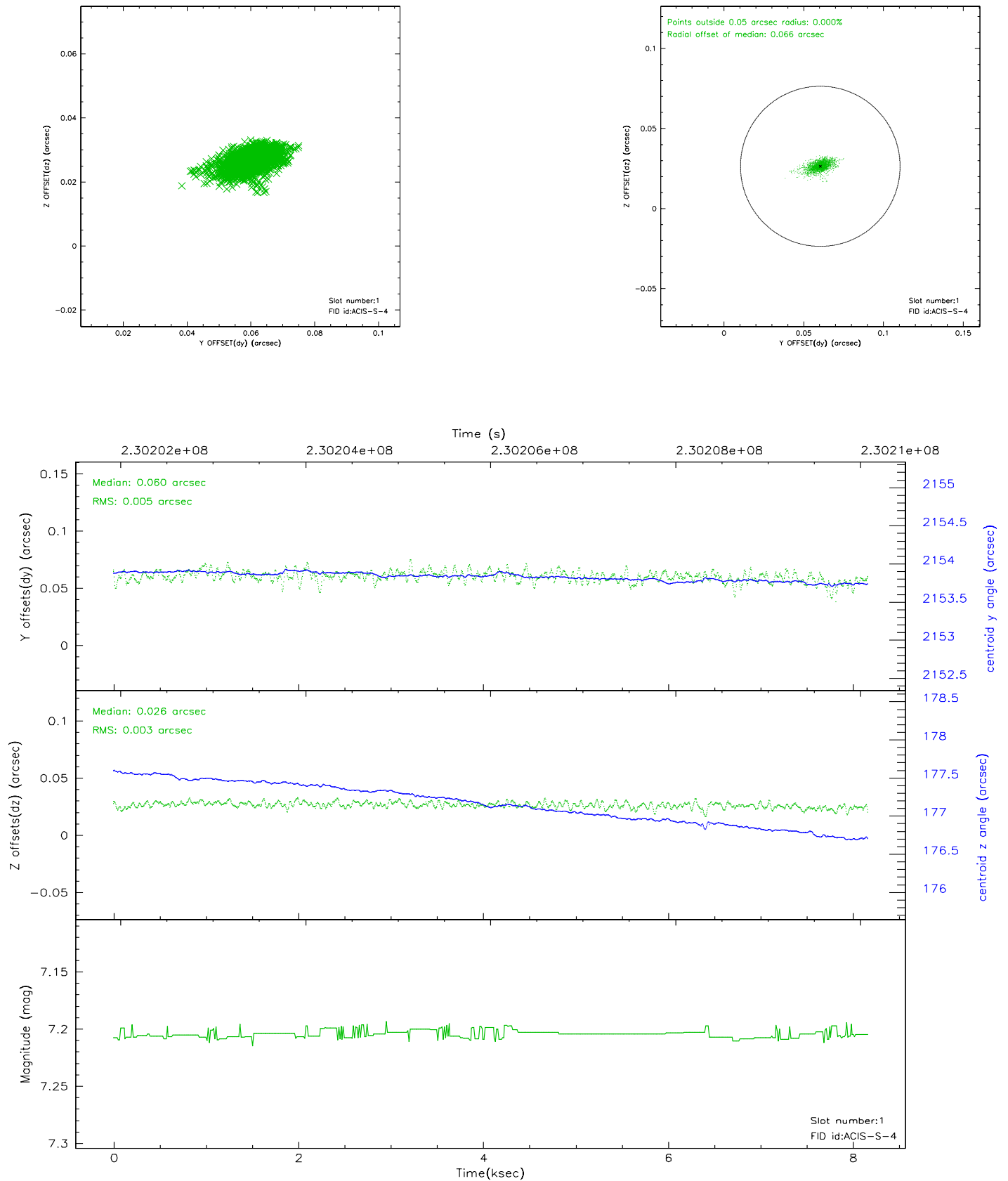


2.5 FID Slots

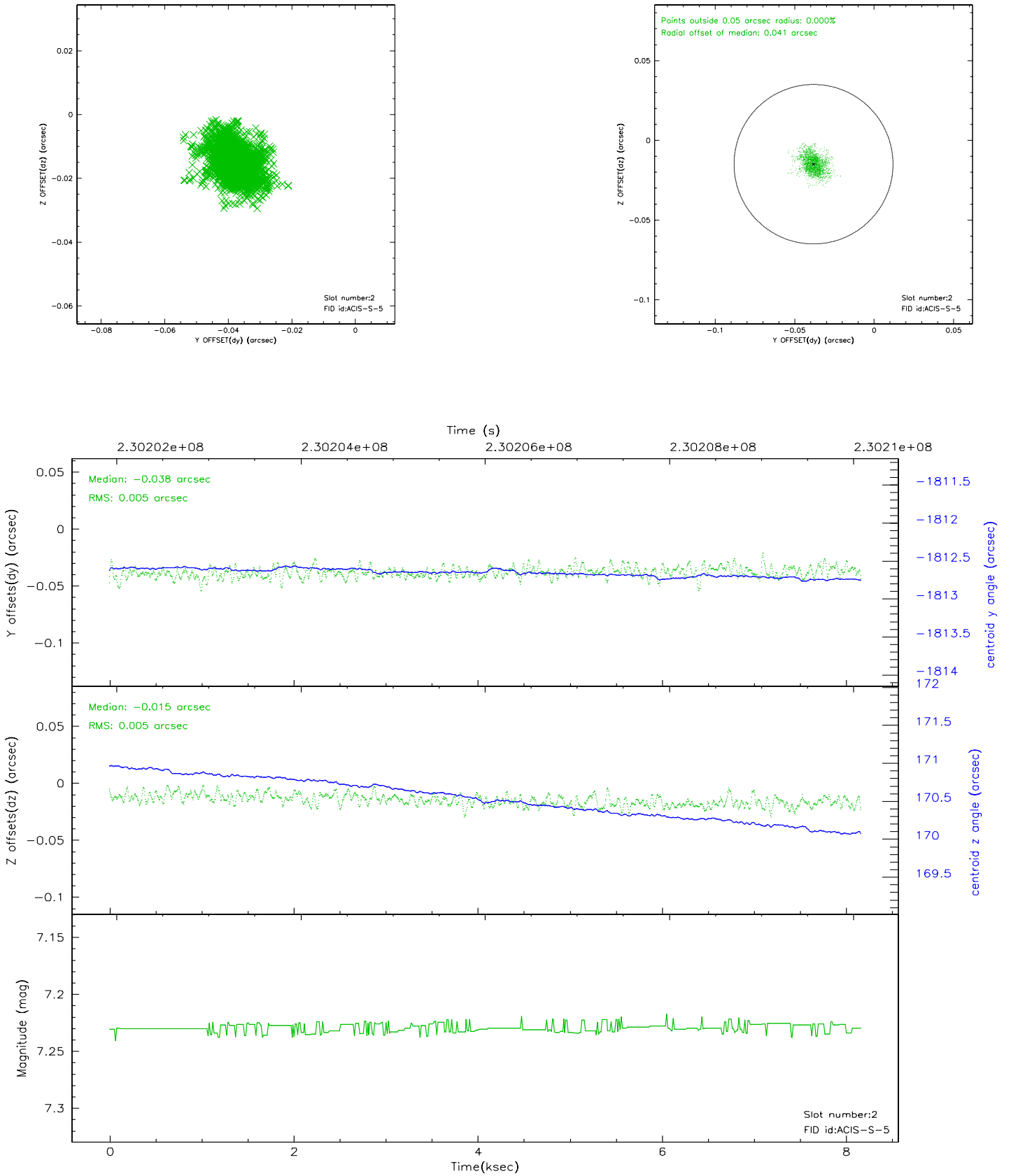
2.5.1 Slot 0



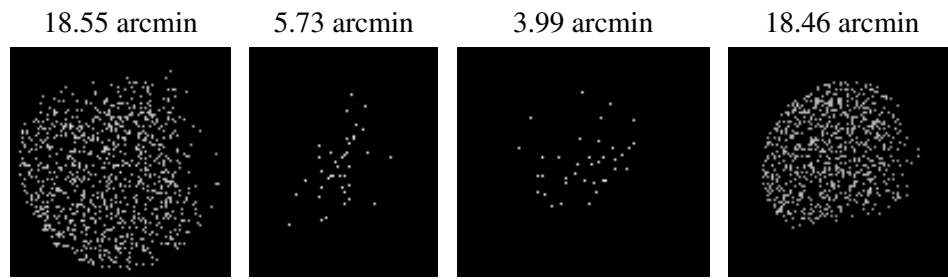
2.5.2 Slot 1



2.5.3 Slot 2



3 Point Sources



A Summary

A.1 Status

V&V Scientist	Beth Sundheim
V&V Date (YYYY-MM-DD)	2006.03.01
V&V Edition	1
V&V Disposition and Status	OK
V&V Charge Time	7.951999

A.2 Comments

Window constraint met.