

V&V Reference Report

L2 ASCDS Version : 8.5.1.1

Observation 5959 - L2 Version 3
Chandra X-Ray Center

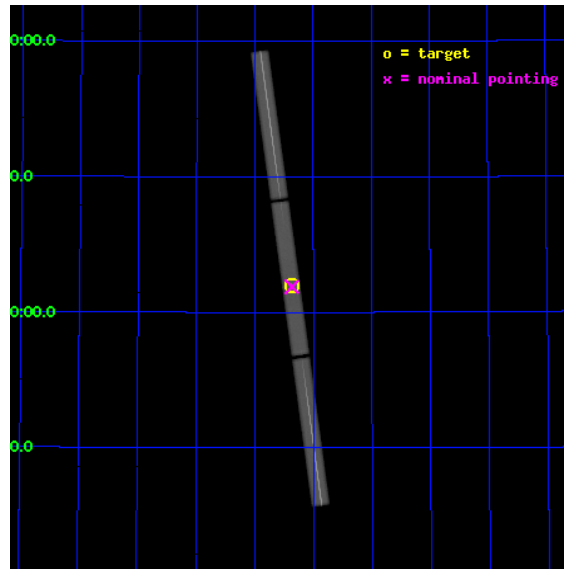
L2 Processing Date : Dec 26 2012

Contents

1	Front	2
2	OBI	3
2.1	OBI	3
2.1.1	Images	3
2.1.2	Parameters	4
2.1.3	Events	4
2.2	Compared Parameters	5
2.3	Aspect	6
2.4	Star Slots	9
2.4.1	Slot 3	9
2.4.2	Slot 4	10
2.4.3	Slot 5	11
2.4.4	Slot 6	12
2.4.5	Slot 7	13
2.5	FID Slots	14
2.5.1	Slot 0	14
2.5.2	Slot 1	15
2.5.3	Slot 2	16
3	Gratings	17
3.1	LETG Arm	17
A	Summary	19
A.1	Status	19
A.2	Comments	19

1 Front

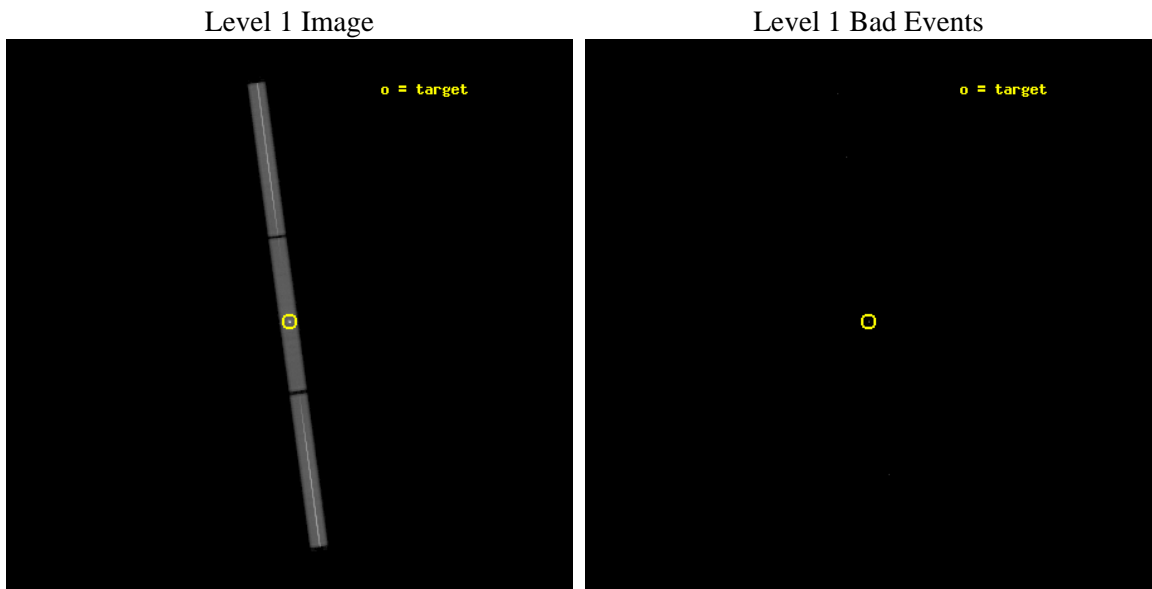
seq_num	290451	Sequence number
obs_id	5959	Observation id
title	AO6 Calibration Observations of HZ43	Proposal title
observer	Dr. CXC Calibration	Principal investigator
object	HZ43	Source name
ra_targ	199.092083	Observer's specified target RA [deg]
dec_targ	29.099	Observer's specified target Dec [deg]
ra_nom	199.09121345545	Nominal RA [deg]
dec_nom	29.094419182567	Nominal Dec [deg]
roll_nom	262.14359336203	Nominal Roll [deg]
revision	3	Processing version of data
ontime	18182.732082427	[s]
livetime	17646.067841641	Ontime multiplied by DTCOR
l2events	2065122	Number of level 2 events



2 OBI

2.1 OBI

2.1.1 Images



2.1.2 Parameters

obi_num	1	Obi number	sched_exp_time	18000.000000	[s] Scheduled observation exposure time
ascdsver	8.5.1.1	Processing system revision	ontime	18182.732082427	[s]
caldsver	4.5.5	 	l1events	2617168	Number of level 1 events
date	2012-12-26T15:24:12	Date and time of file creation			
revision	3	Processing version of data			

2.1.3 Events

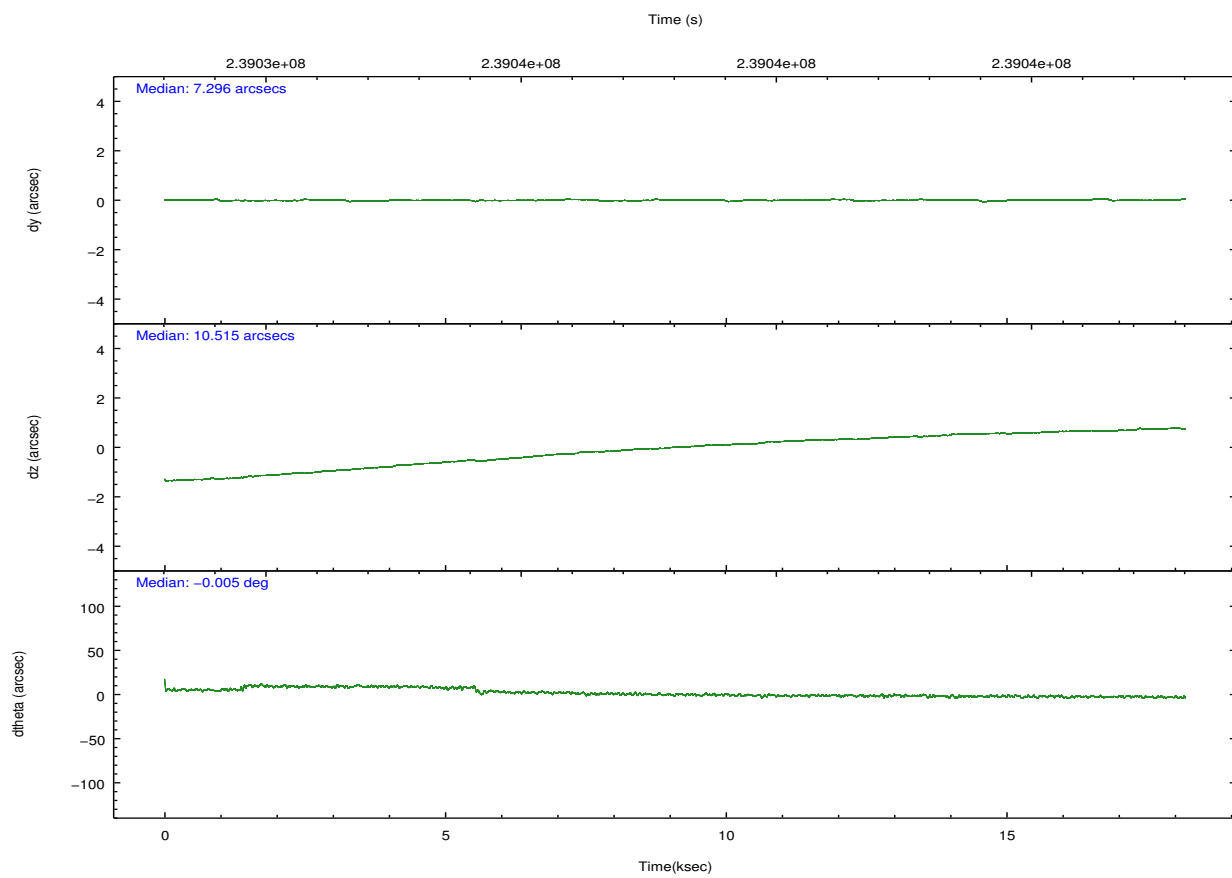
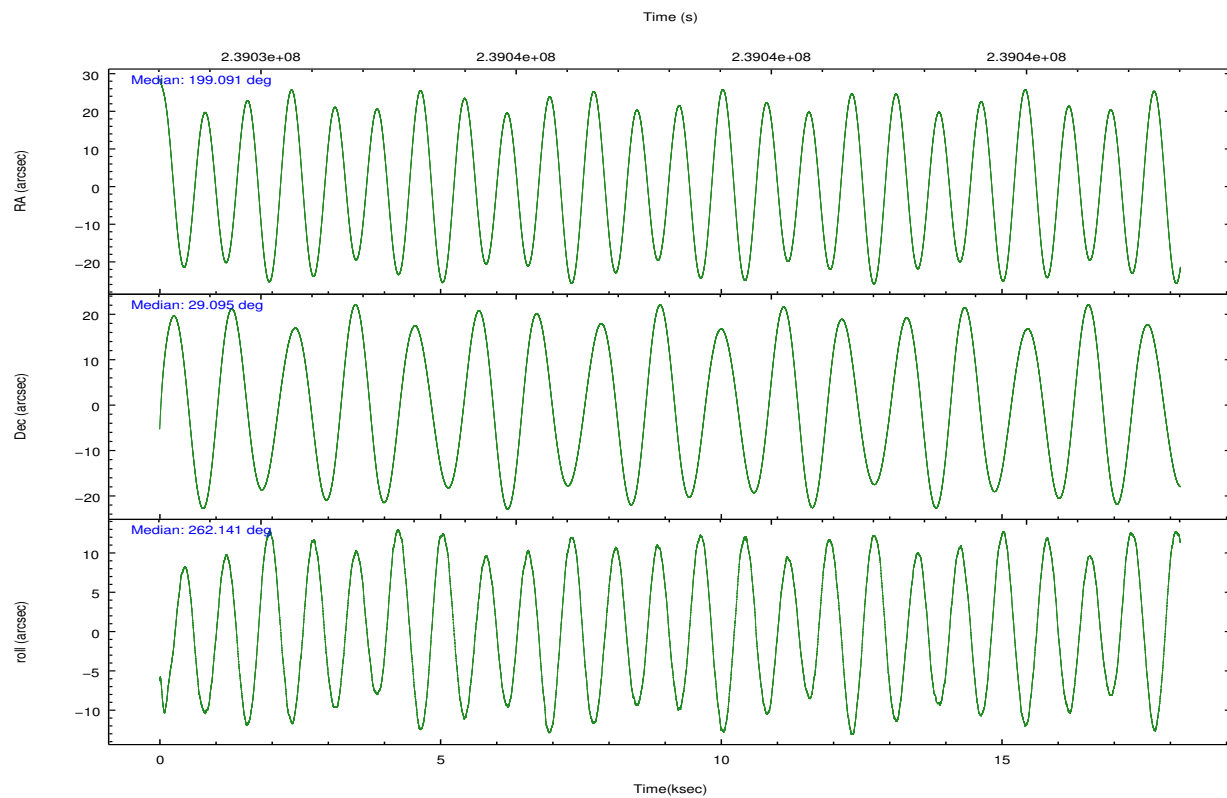
Level 1 Events

	segment 1	segment 2	segment 3
level 1 events	913185	795382	908601
rejected events	34222	32427	34152
rejected %	3%	4%	3%

2.2 Compared Parameters

Parameter	Planned	Actual	Parameter	Planned	Actual
Instrument	HRC	HRC	Obspar format version number	7	7
Detector	HRC-S	HRC-S	Obspar file type	PREDICTED	ACTUAL
Grating	LETG	LETG	Obspar update status	NONE	UPDATED
Data mode	OBSERVING	OBSERVING			
Observation mode	POINTING	POINTING			
[deg] Pointing RA	199.077371	199.0912134554513			
[deg] Pointing Dec	29.120310	29.09441918256656			
[deg] Pointing Roll	262.082996	262.1435933620253			
[s] Window start time (MET)	233971264.184000	233971264.184000			
[s] Window stop time (MET)	241833664.184000	241833664.184000			
[mm] SIM focus pos	-1.429586	-1.428180813131781			
[mm] SIM defocus	0.1037507710433287	0.1051558262725154			
[mm] SIM translation stage pos	250.455976	250.4635187648994			
[mm] SIM translation stage offset	0	-0.007540371344731511			
[s] Observation start time (MET)	239029106.184000	239027947.07225			
Observation start date	2005-07-29T12:57:22	2005-07-29T12:39:07			
[s] Observation end time (MET)	239047106.184000	239047415.41064			
Observation end date	2005-07-29T17:57:22	2005-07-29T18:03:35			

2.3 Aspect

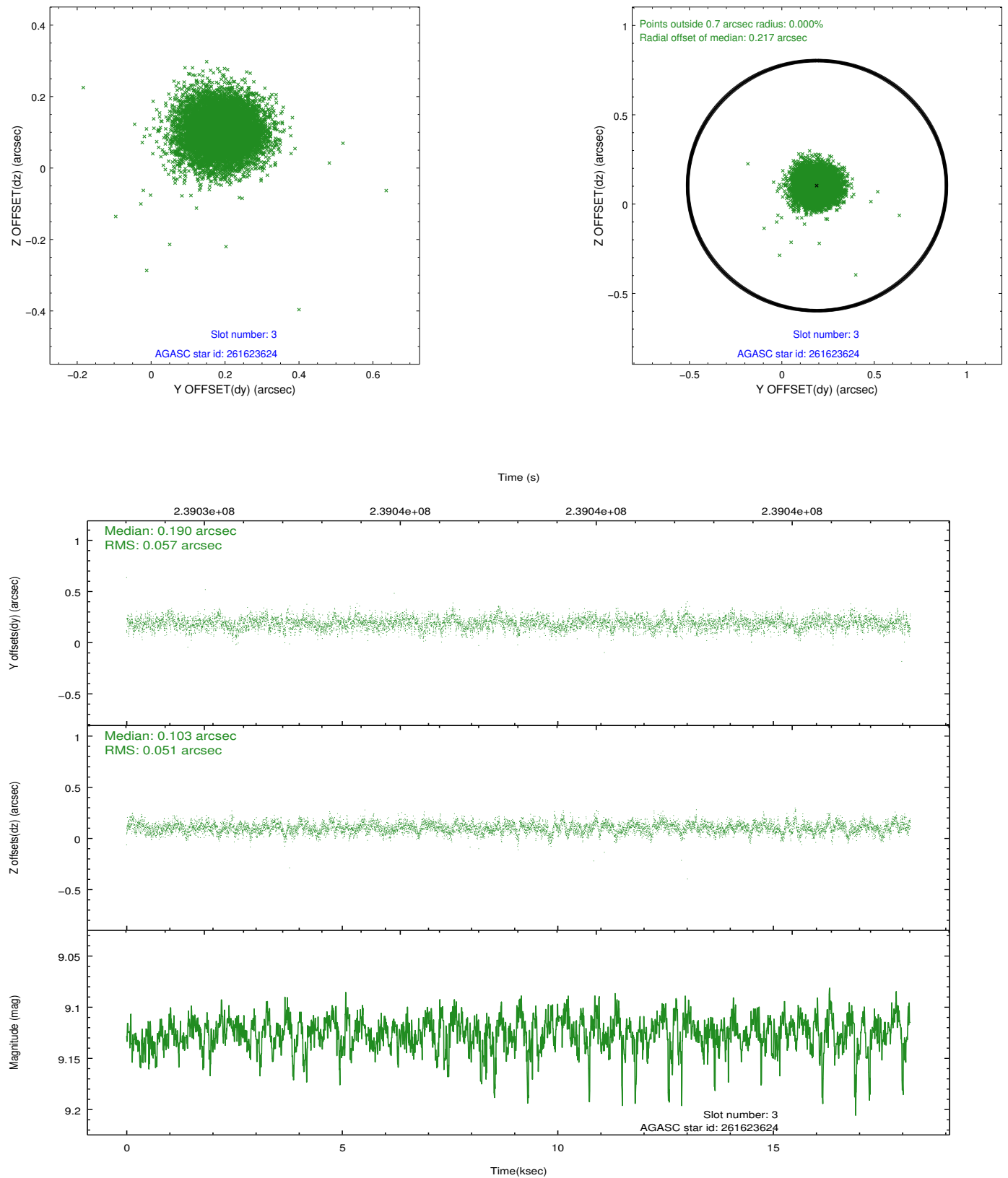


Slot Statistics

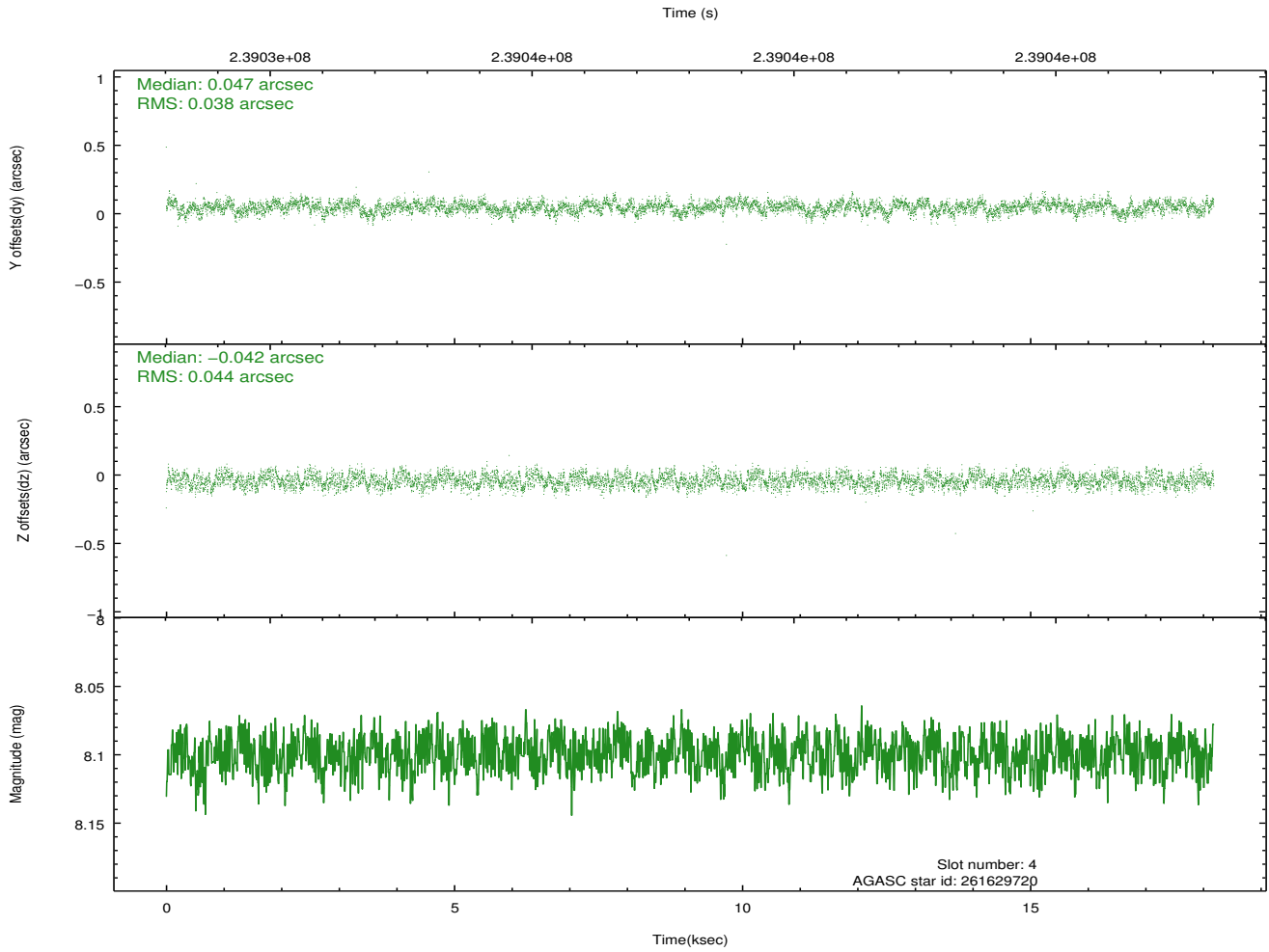
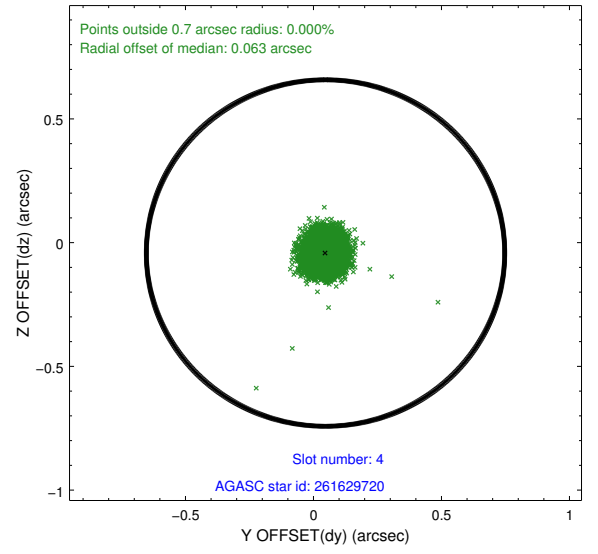
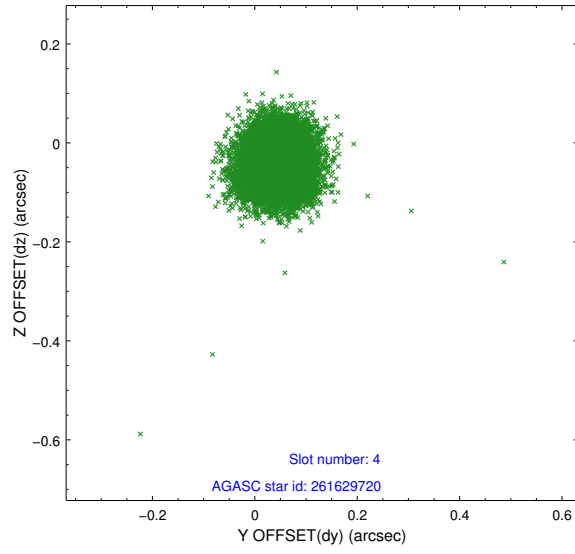
slot	status	id	mag	n_pts	med_dy	med_dz	dr1	dr2	ra	dec	mean_y	mean_z
0	FID	HRC-S-1	7.00	4435	0.085	-0.184	0.023	0.031	0.000000	0.000000	-1161.48	-459.09
1	FID	HRC-S-3	7.01	4435	0.089	-0.029	0.026	0.037	0.000000	0.000000	-1164.49	570.49
2	FID	HRC-S-4	6.96	4435	0.215	-0.081	0.009	0.014	0.000000	0.000000	1236.62	573.29
3	GUIDE	261623624	9.12	8865	0.190	0.103	0.080	0.132	199.611555	28.454113	2139.23	2004.81
4	GUIDE	261629720	8.10	8869	0.047	-0.042	0.063	0.097	199.236176	29.044452	201.85	532.85
5	GUIDE	261626352	8.60	8869	-0.075	-0.090	0.078	0.129	198.417097	29.781420	-2079.00	-2372.97
6	GUIDE	261624080	7.08	8871	-0.213	-0.198	0.057	0.092	198.424651	29.817768	-2211.80	-2366.60
7	GUIDE	261624456	7.31	8869	0.053	0.230	0.060	0.098	199.758056	28.567828	1666.90	2404.40

2.4 Star Slots

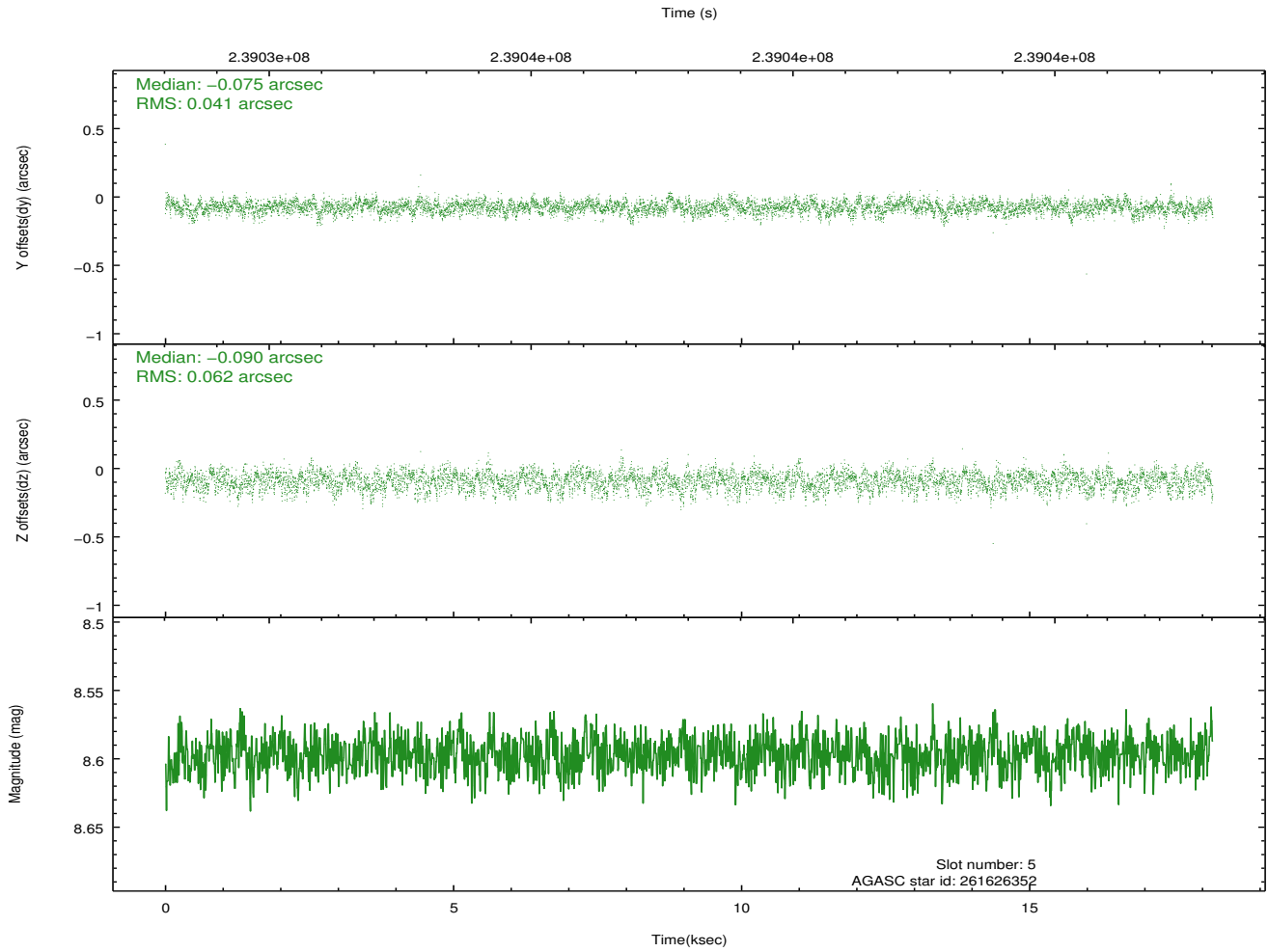
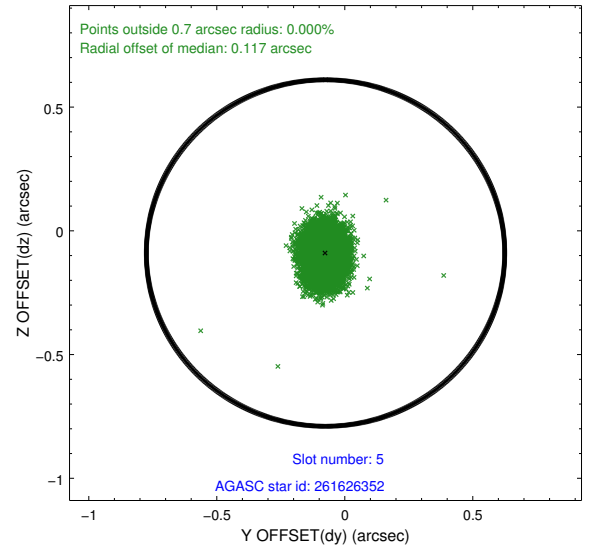
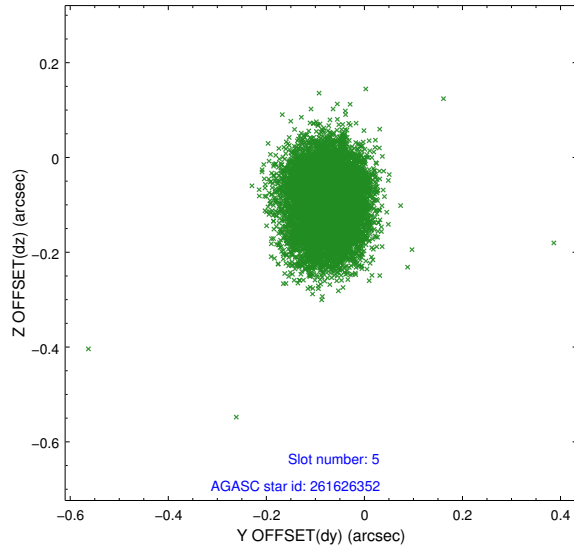
2.4.1 Slot 3



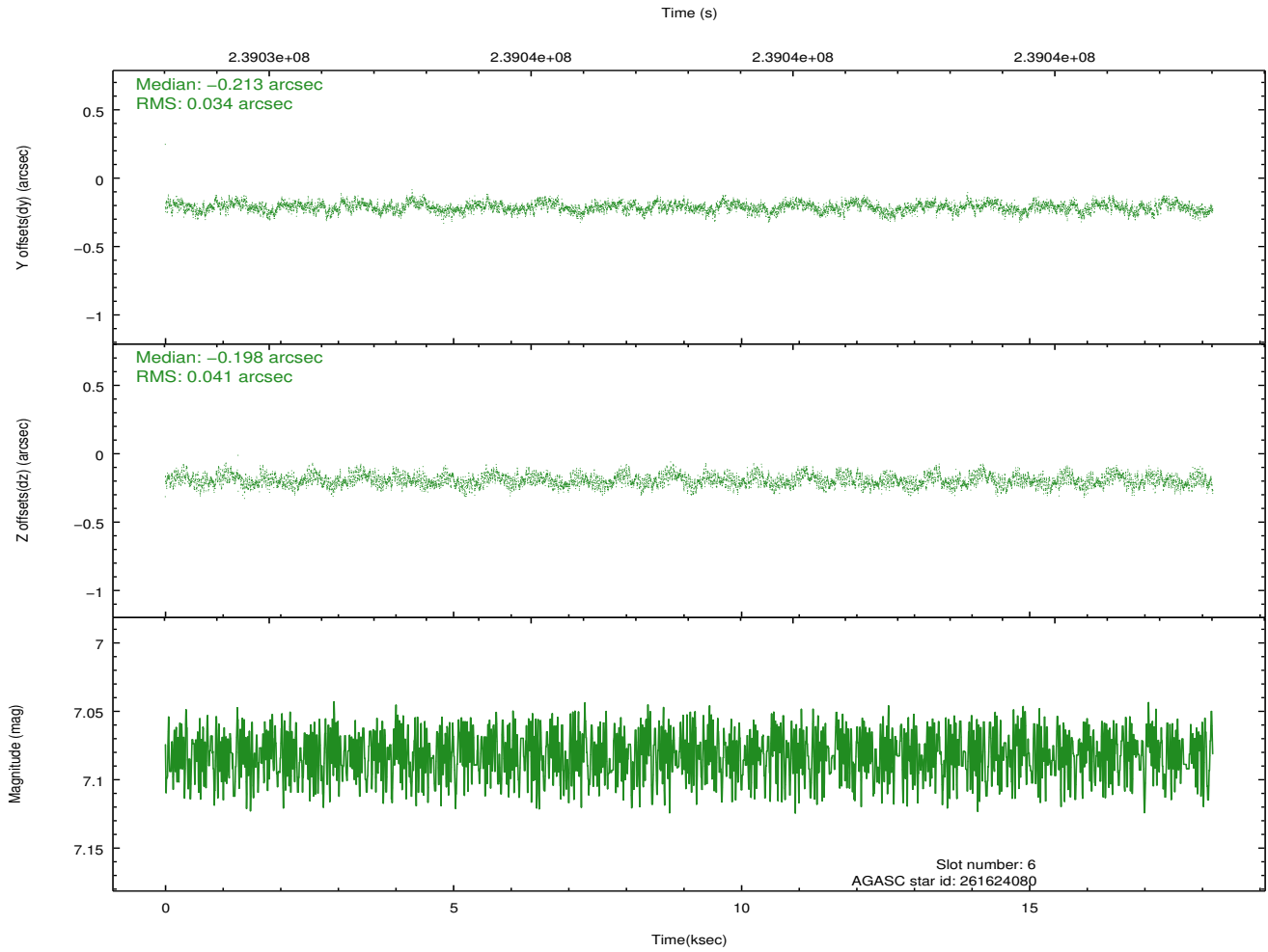
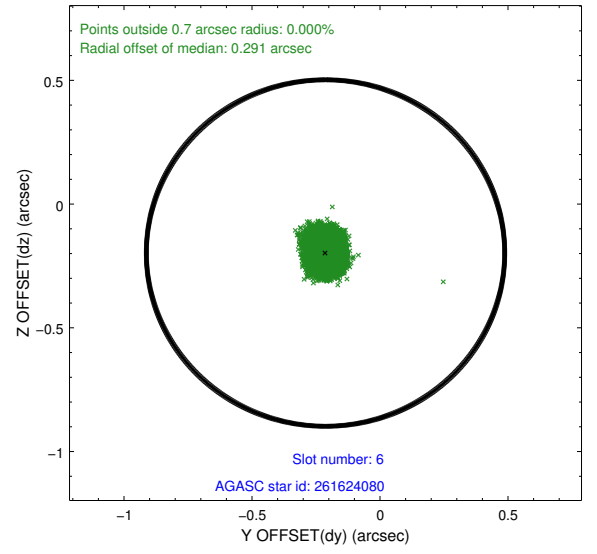
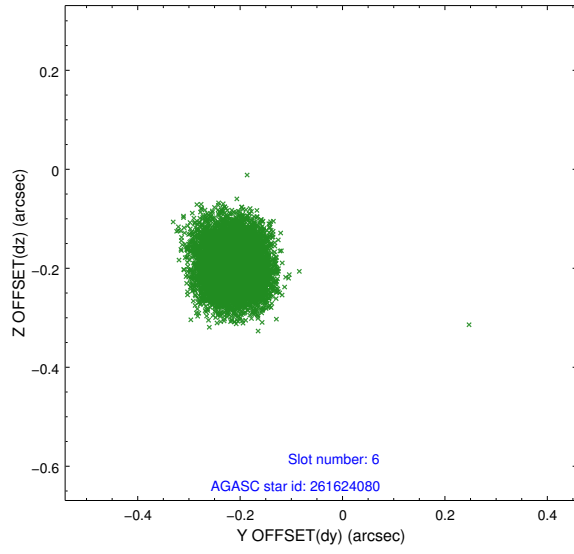
2.4.2 Slot 4



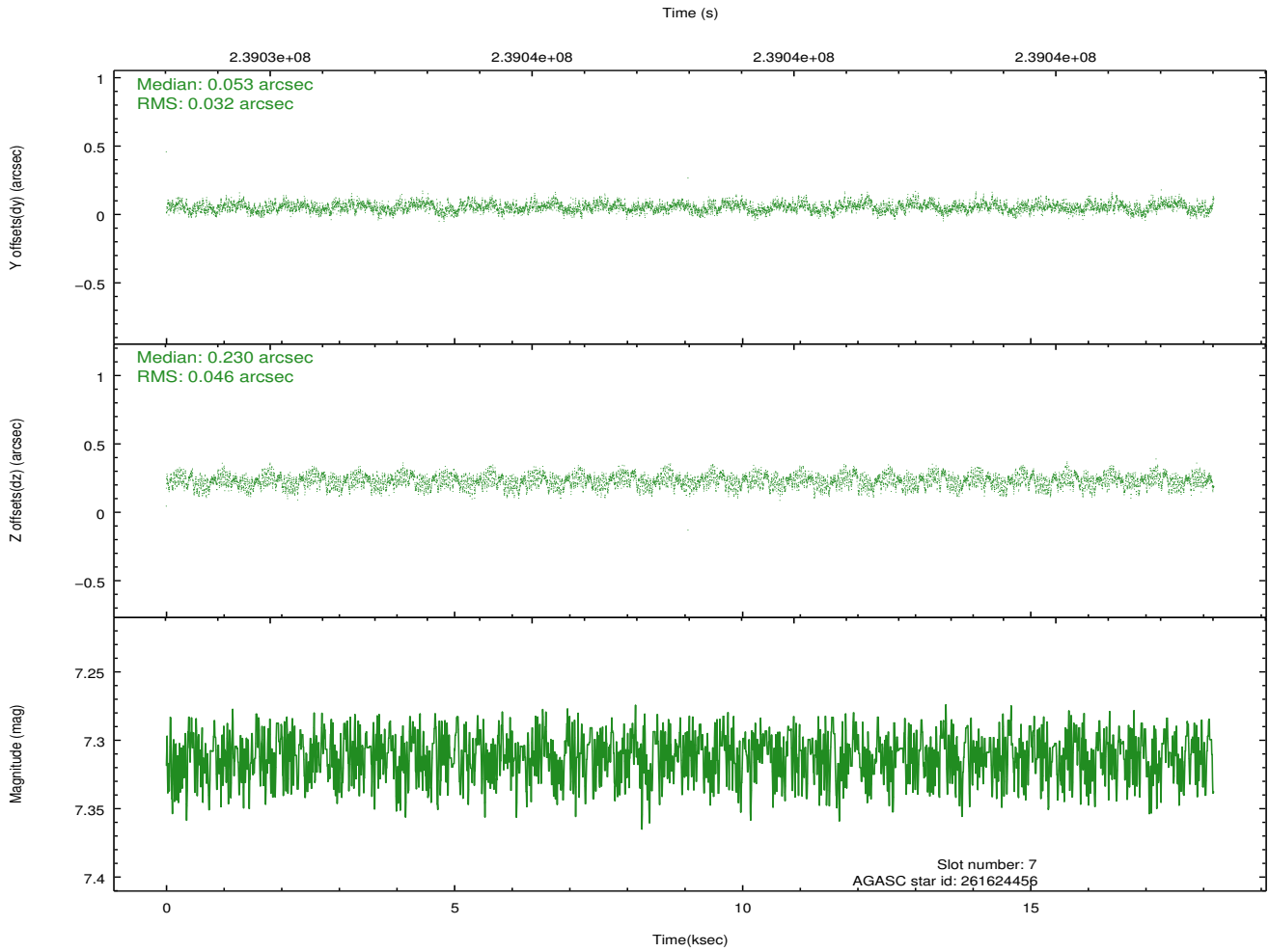
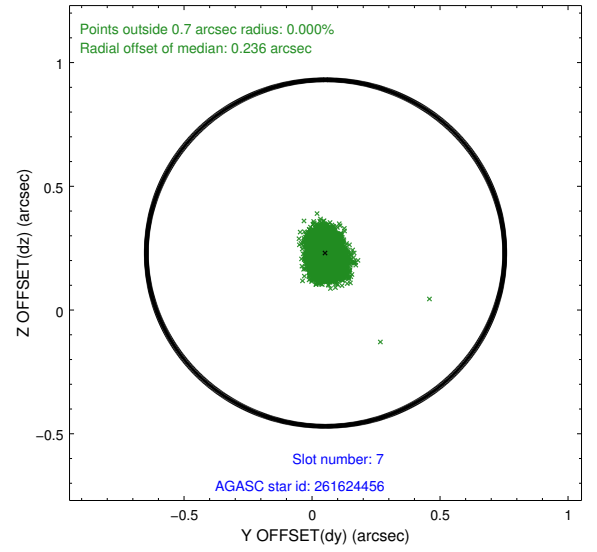
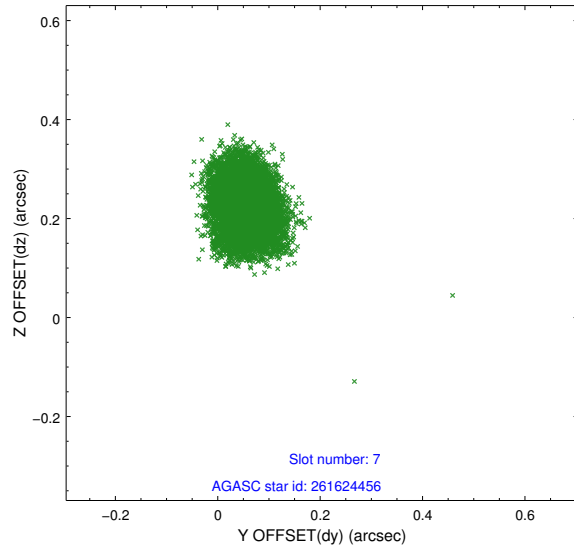
2.4.3 Slot 5



2.4.4 Slot 6

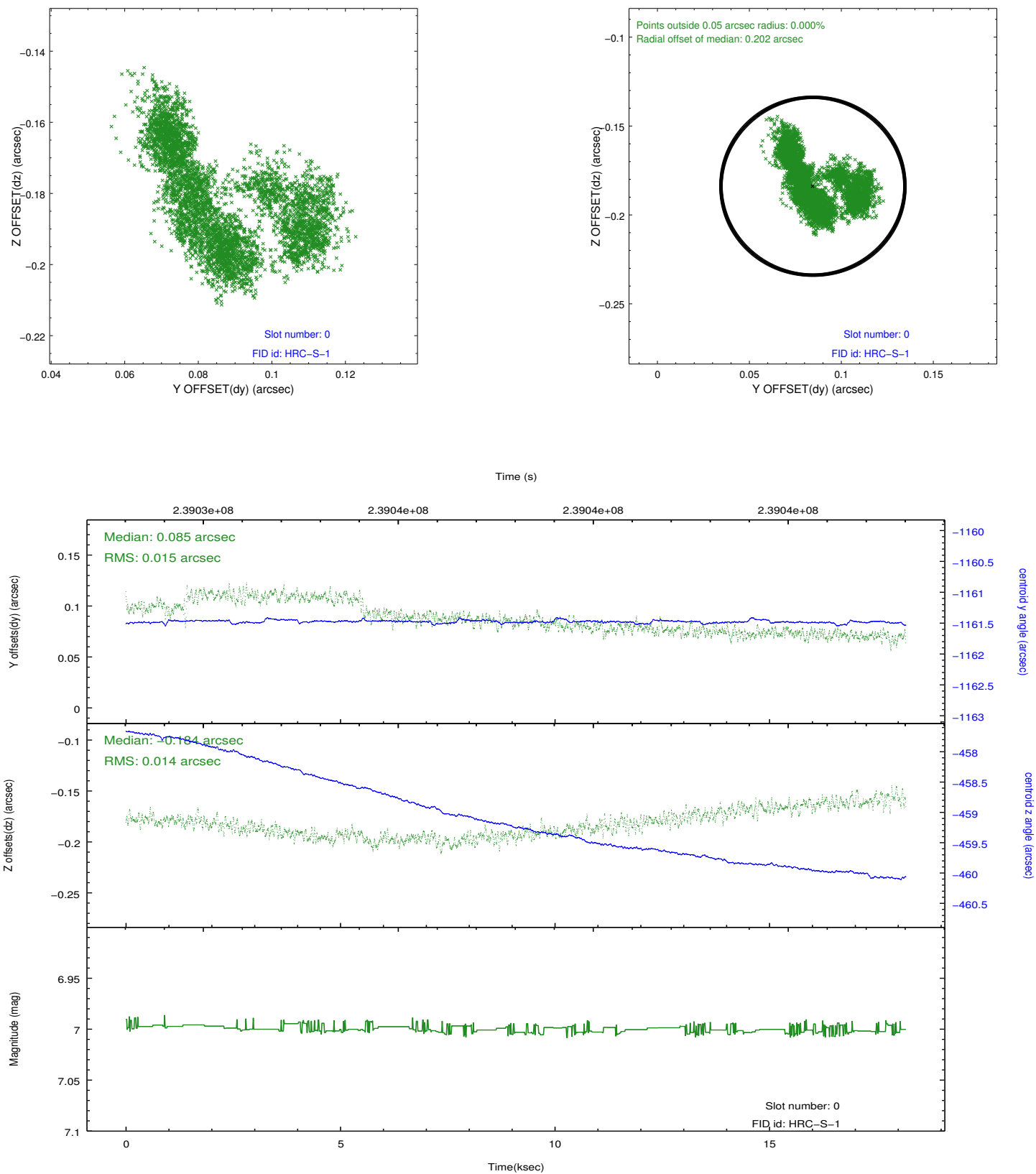


2.4.5 Slot 7

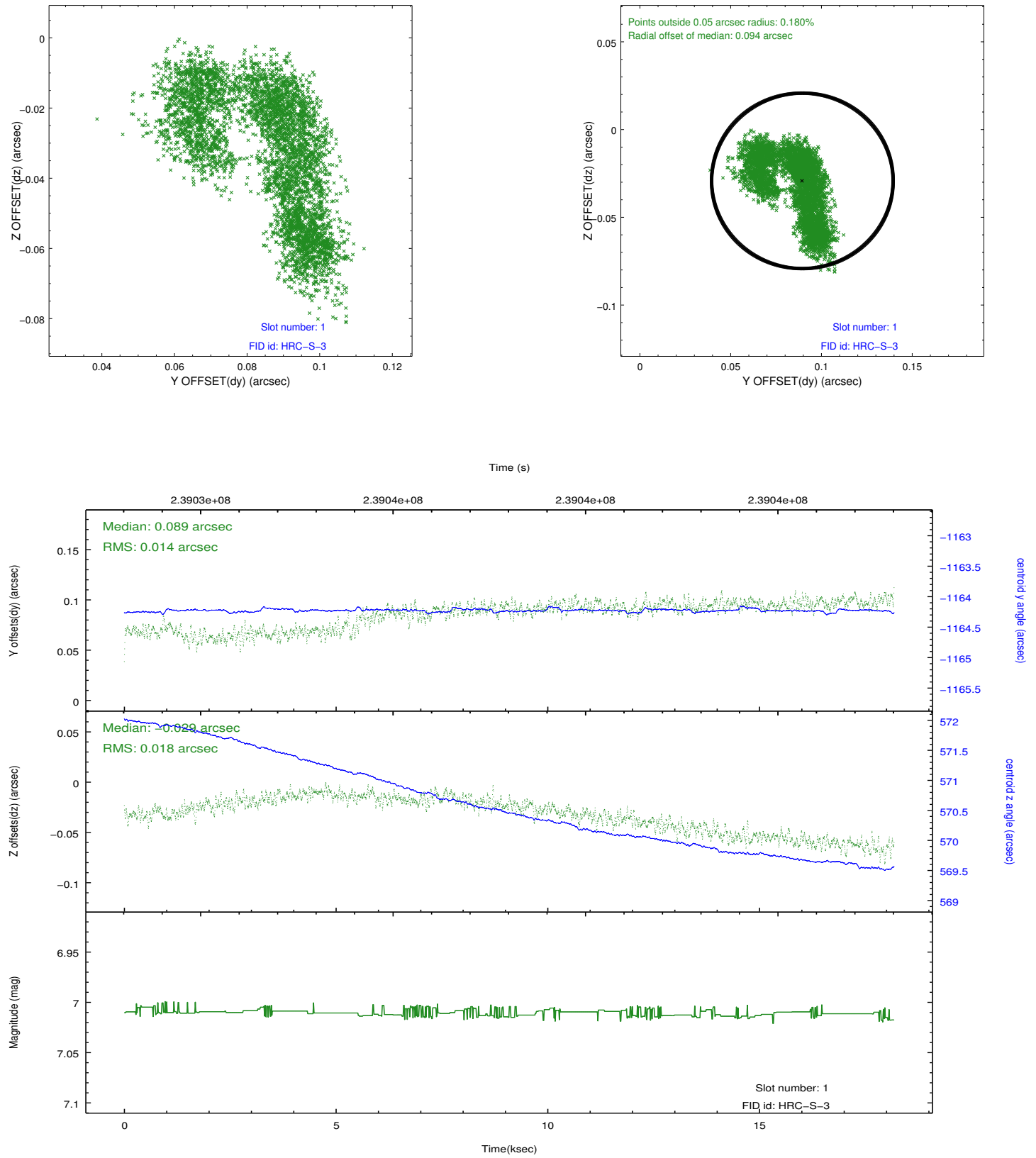


2.5 FID Slots

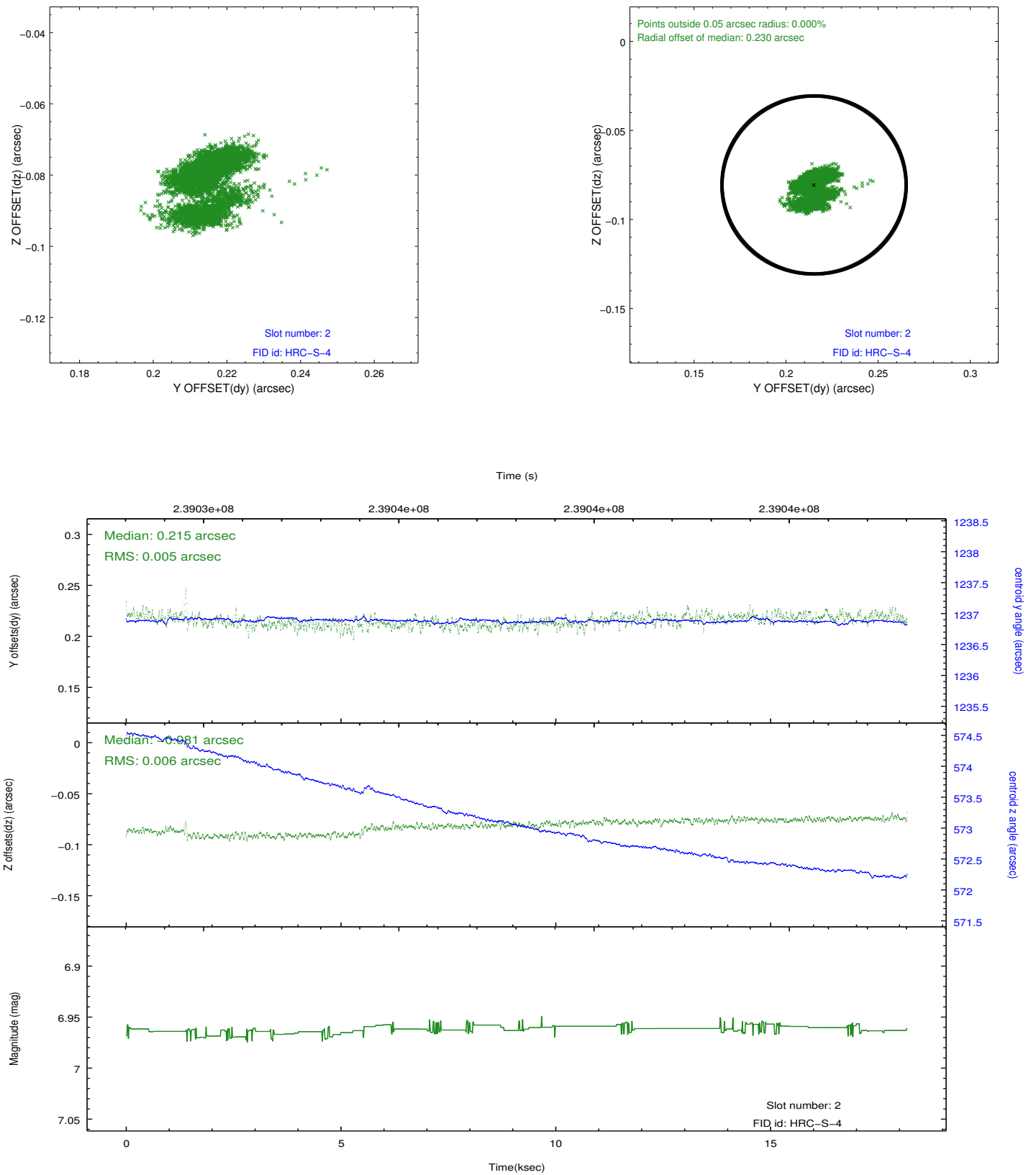
2.5.1 Slot 0



2.5.2 Slot 1

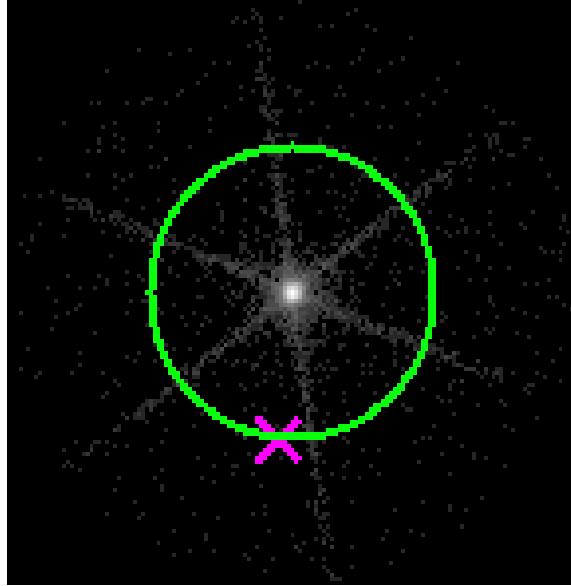


2.5.3 Slot 2

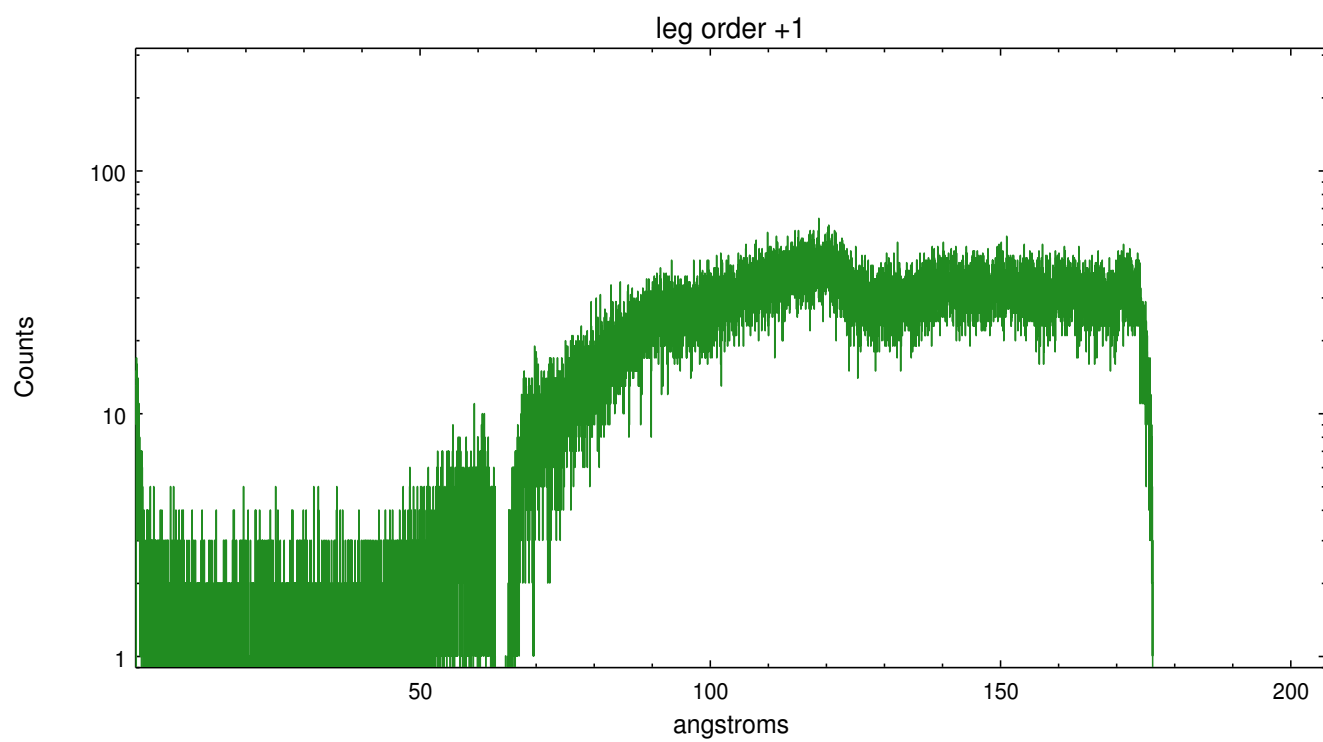
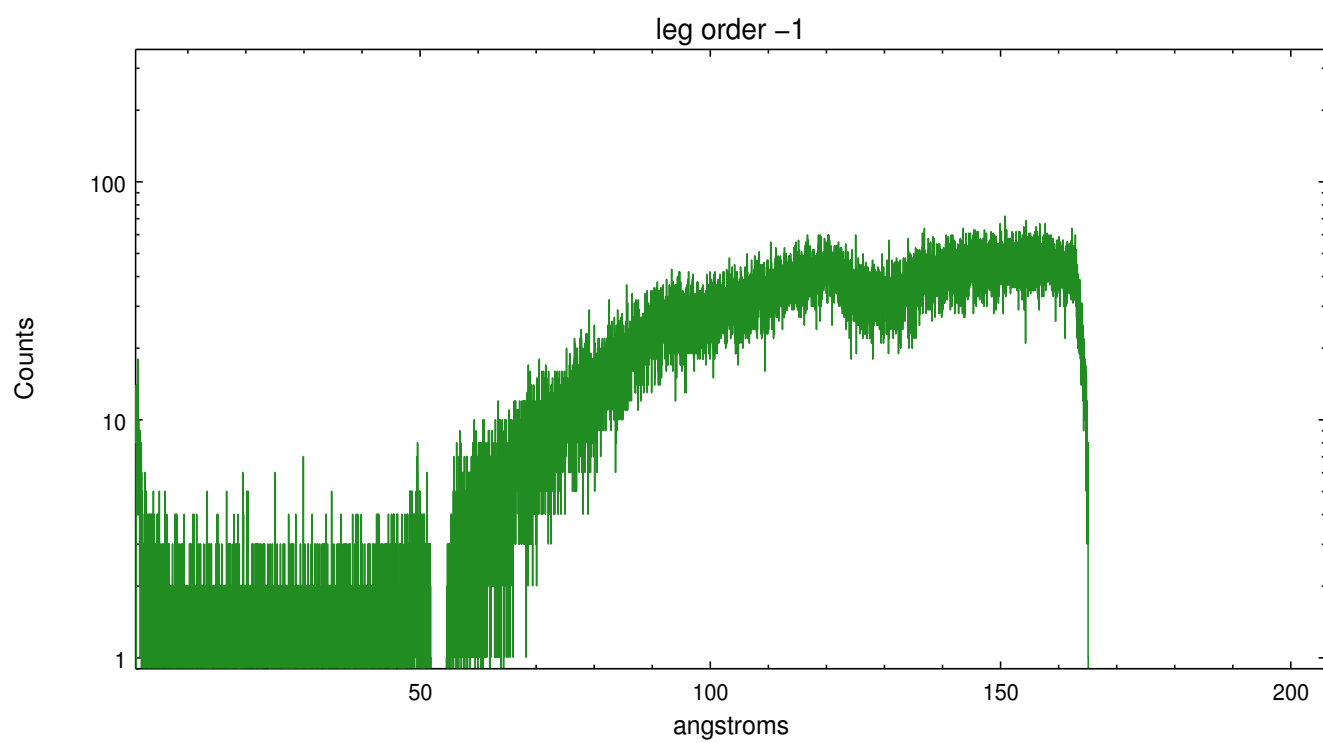


3 Gratings

3.1 LETG Arm



LETG Zero Order



A Summary

A.1 Status

V&V Scientist	Joy Nichols
V&V Date (YYYY-MM-DD)	2013.01.24
V&V Edition	1
V&V Disposition and Status	OK
V&V Charge Time	18.18273

A.2 Comments