

V&V Reference Report

L2 ASCDS Version : 7.6.7

Observation 6159 - L2 Version 002
Chandra X-Ray Center

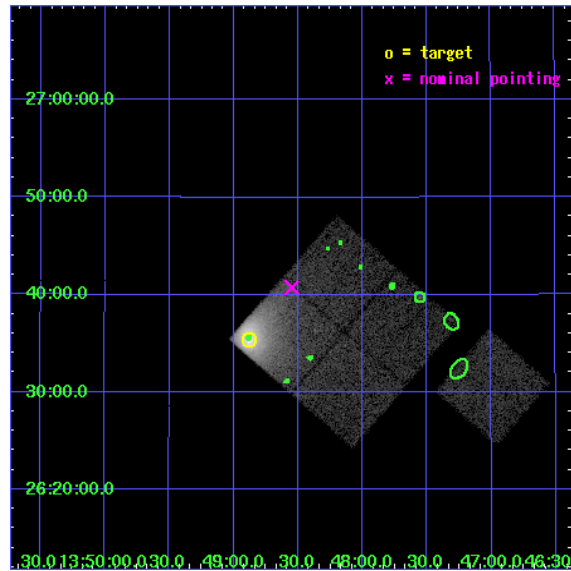
L2 Processing Date: Feb 27 2006

Contents

1	Front	2
2	OBI	3
2.1	OBI	3
2.1.1	Images	3
2.1.2	Bias	3
2.1.3	Parameters	4
2.1.4	Events	4
2.2	Compared Parameters	5
2.3	Aspect	6
2.4	Star Slots	9
2.4.1	Slot 3	9
2.4.2	Slot 4	10
2.4.3	Slot 5	11
2.4.4	Slot 6	12
2.4.5	Slot 7	13
2.5	FID Slots	14
2.5.1	Slot 0	14
2.5.2	Slot 1	15
2.5.3	Slot 2	16
3	Point Sources	17
A	Summary	18
A.1	Status	18
A.2	Comments	18

1 Front

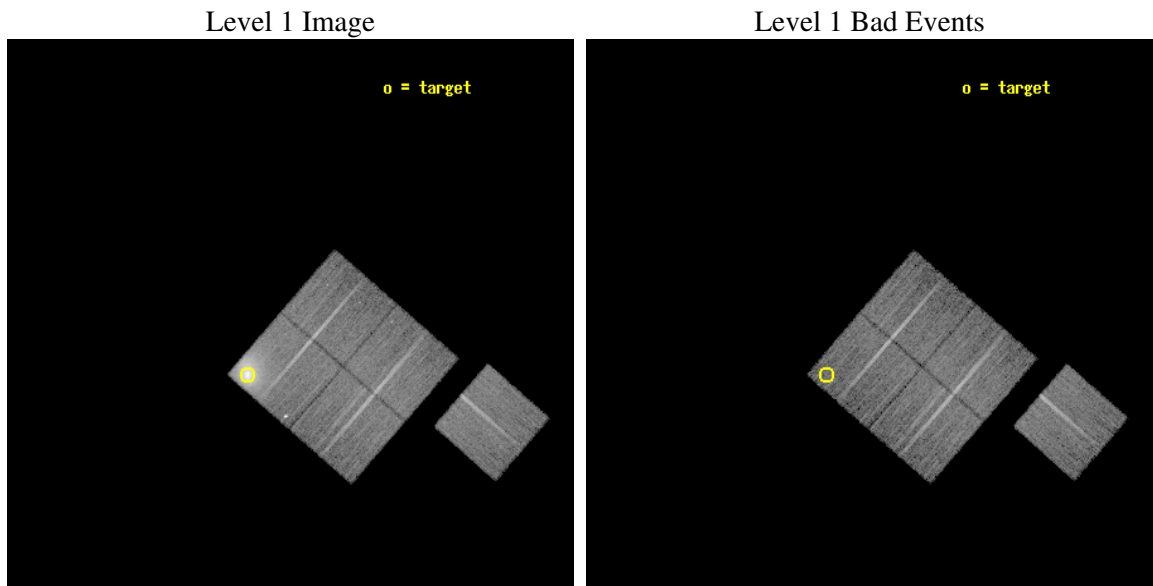
seq_num	890031
obs_id	6159
title	Monitoring the Spatial Variation of the ACIS Contaminant with Abell 1795
observer	Dr. CXC Calibration
object	A1795
dtcycle	0
cycle	P
ra_targ	207.219583
dec_targ	26.590833
ra_nom	207.13695253194
dec_nom	26.679285125169
roll_nom	130.9812198463
revision	2
ontime	15047.358980805
livetime	14850.754158016
ontime0	15047.358990818
ontime1	15047.358980805
ontime2	15047.35897091
ontime3	15050.499971062
ontime6	15050.499971062
l2events	120057



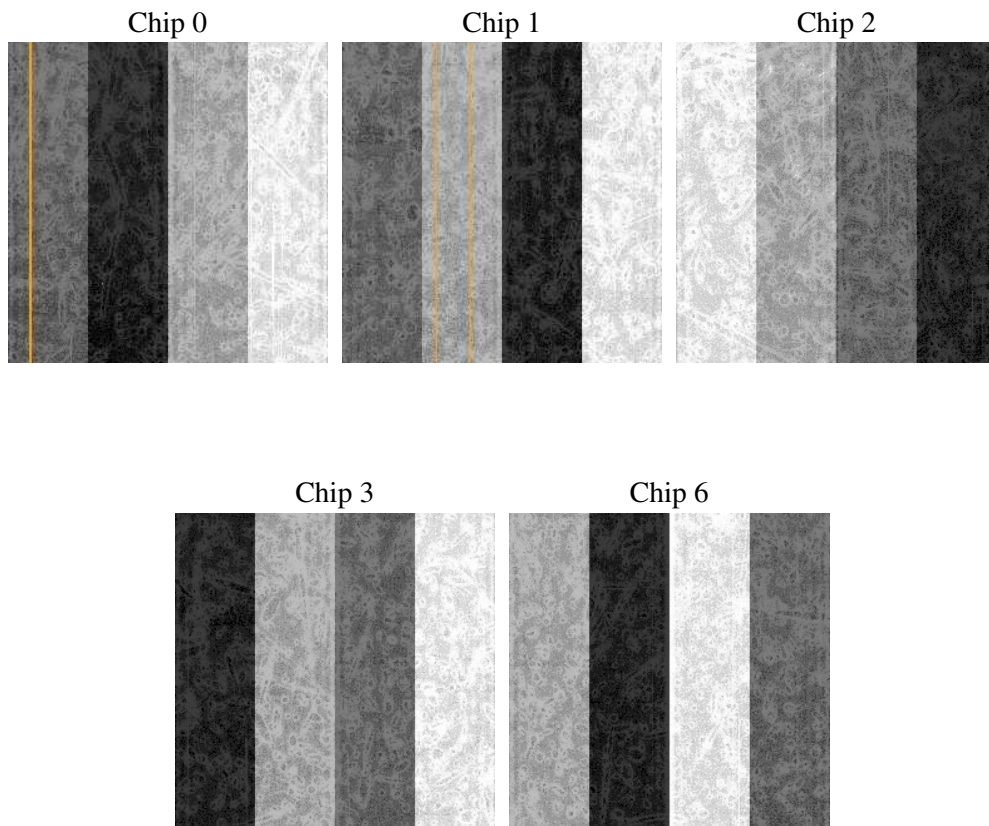
2 OBI

2.1 OBI

2.1.1 Images



2.1.2 Bias



2.1.3 Parameters

obi_num	0
ascdsver	7.6.7
caldsver	3.2.1
date	2006-02-27T15:32:40
revision	2

sched_exp_time	15000.000000
ontime	15051.730273098
ontime0	15051.730283111
ontime1	15051.730273098
ontime2	15051.730243295
ontime3	15054.871263355
ontime6	15054.871243447
l1events	540600

2.1.4 Events

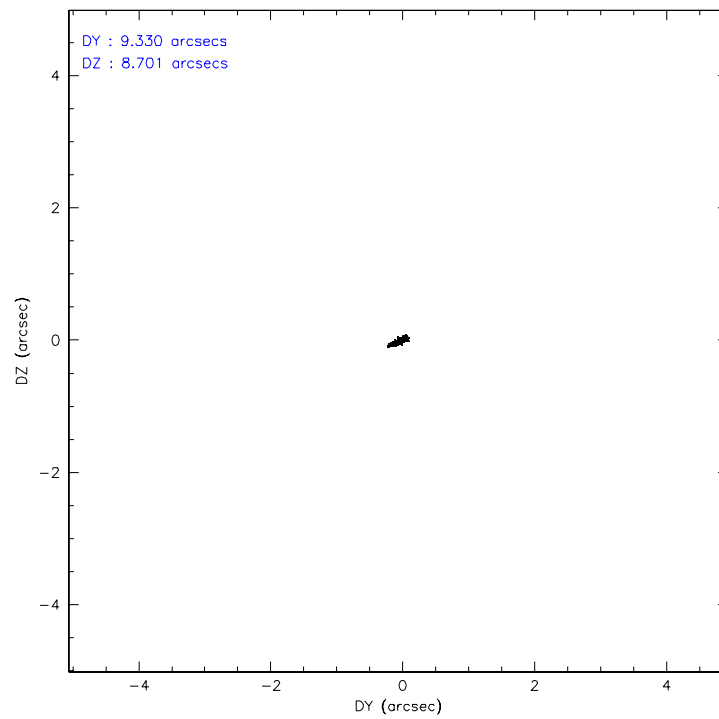
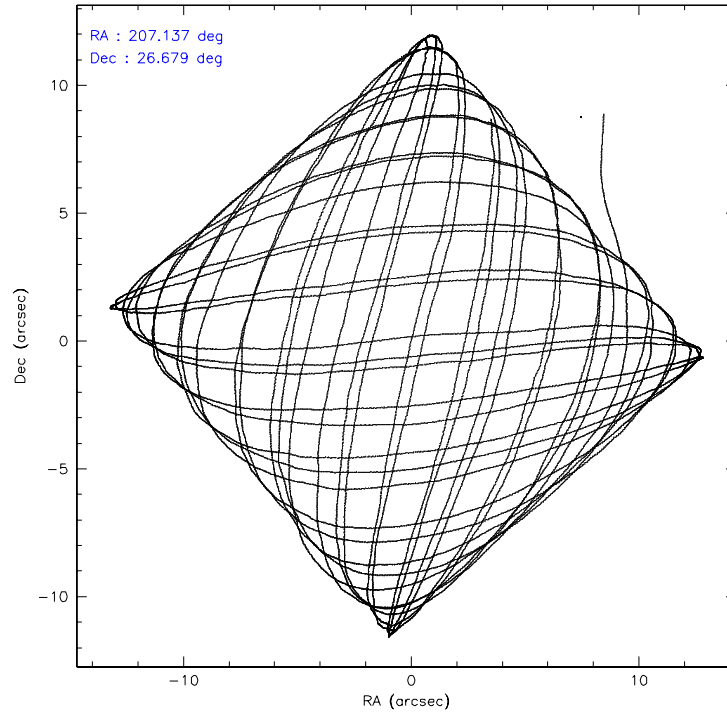
	ccd 0	ccd 1	ccd 2	ccd 3	ccd 6
level 1 events	88002	168318	95966	94676	93638
rejected events	76872	77322	86307	84722	84500
rejected %	87%	45%	89%	89%	90%

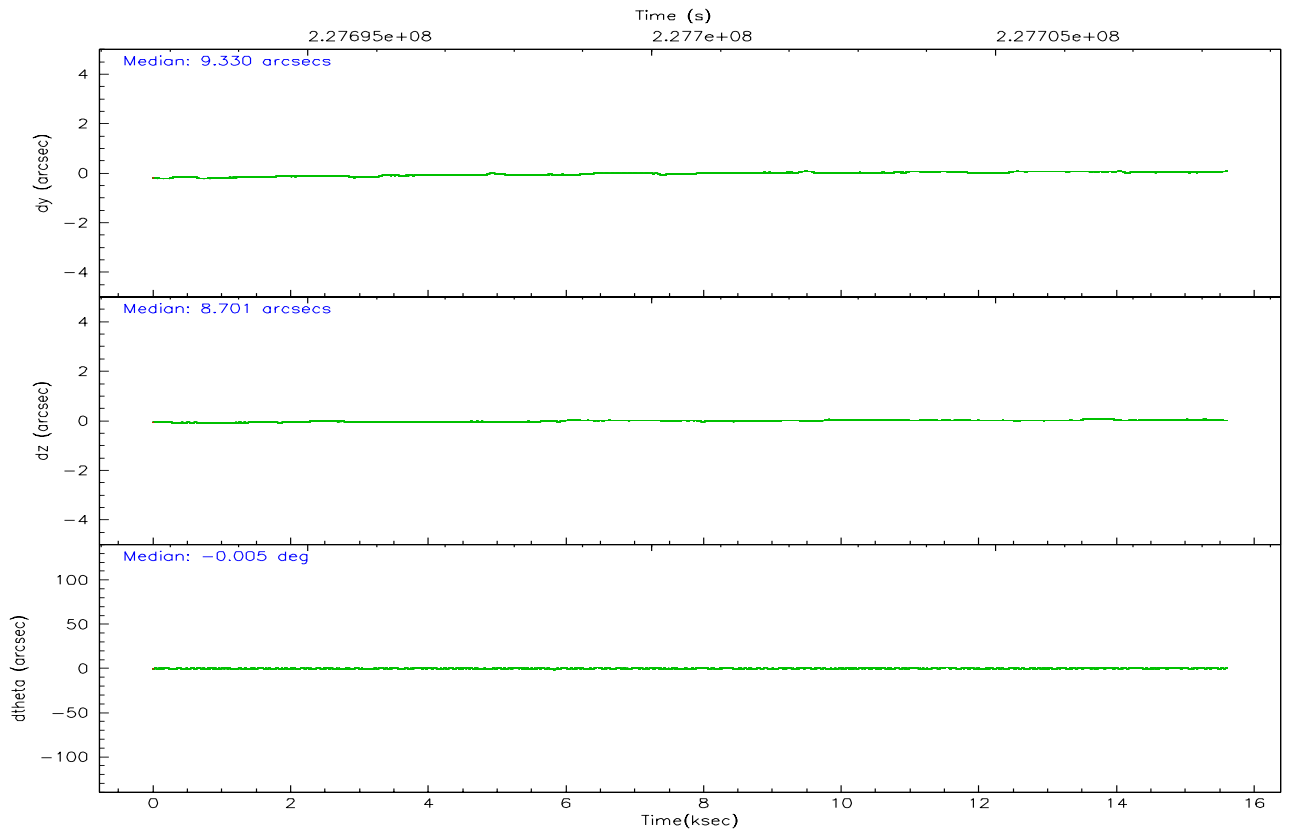
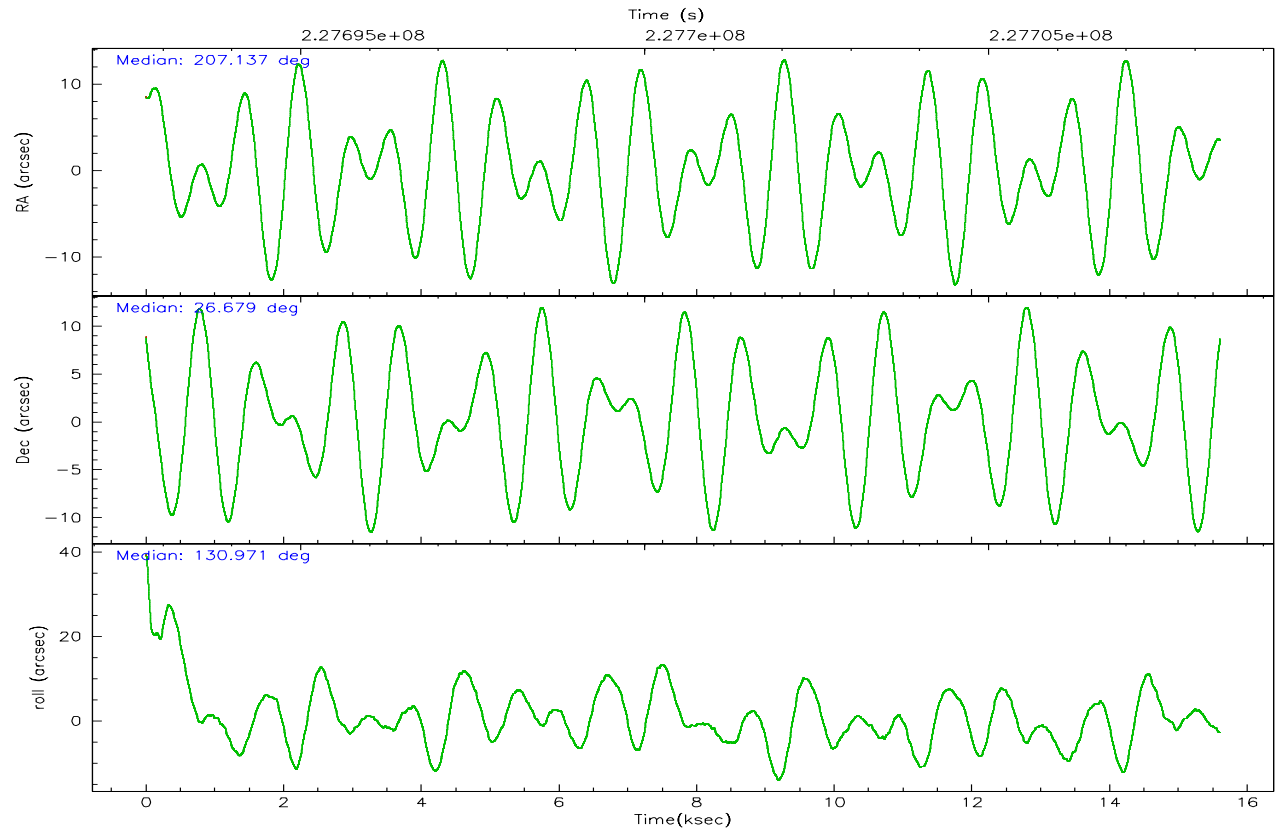
	ccd 0	ccd 1	ccd 2	ccd 3	ccd 6
grade 0 events	4692	68567	3637	4084	3125
	5%	40%	3%	4%	3%
grade 1 events	46	332	61	52	35
	0%	0%	0%	0%	0%
grade 2 events	2320	10617	2197	1957	2011
	2%	6%	2%	2%	2%
grade 3 events	1187	3787	1017	1085	1051
	1%	2%	1%	1%	1%
grade 4 events	1049	3755	1000	1076	993
	1%	2%	1%	1%	1%
grade 5 events	3279	3913	3123	3753	3605
	3%	2%	3%	3%	3%
grade 6 events	1887	4298	1811	1756	1964
	2%	2%	1%	1%	2%
grade 7 events	73542	73049	83120	80913	80854
	83%	43%	86%	85%	86%

2.2 Compared Parameters

Parameter	Planned	Actual	Parameter	Planned	Actual
Instrument	ACIS	ACIS	Obspar format version number	6	6
Detector	ACIS-01236	ACIS-01236	Obspar file type	PREDICTED	ACTUAL
Grating	NONE	NONE	Obspar update status	NONE	UPDATED
Data mode	VFAINT	VFAINT	On-chip summing requested	N	N
Observation mode	POINTING	POINTING	Subarray requested	NONE	NONE
Pointing RA	207.165923	207.1369525319361	Alternating exposures requested	N	N
Pointing Dec	26.670502	26.67928512516938	Primary exposure time	0.000000	3.1
Pointing Roll	130.759506	130.981219846295			
Window start time	218246464.184000	218246464.184000			
Window stop time	228614464.184000	228614464.184000			
SIM focus pos (mm)	-0.782348	-0.7809083437167272			
SIM defocus (mm)	0	0.001439871863259334			
SIM translation stage pos (mm)	-256.092463	-256.0955850403938			
SIM translation stage offset (mm)	22.5	22.50313203746413			
Observation start time	227693363.184000	227692219.918			
Observation start date	2005-03-20T08:08:19	2005-03-20T07:50:19			
Observation end time	227708363.184000	227708517.41874			
Observation end date	2005-03-20T12:18:19	2005-03-20T12:21:57			
Read mode	TIMED	TIMED			

2.3 Aspect



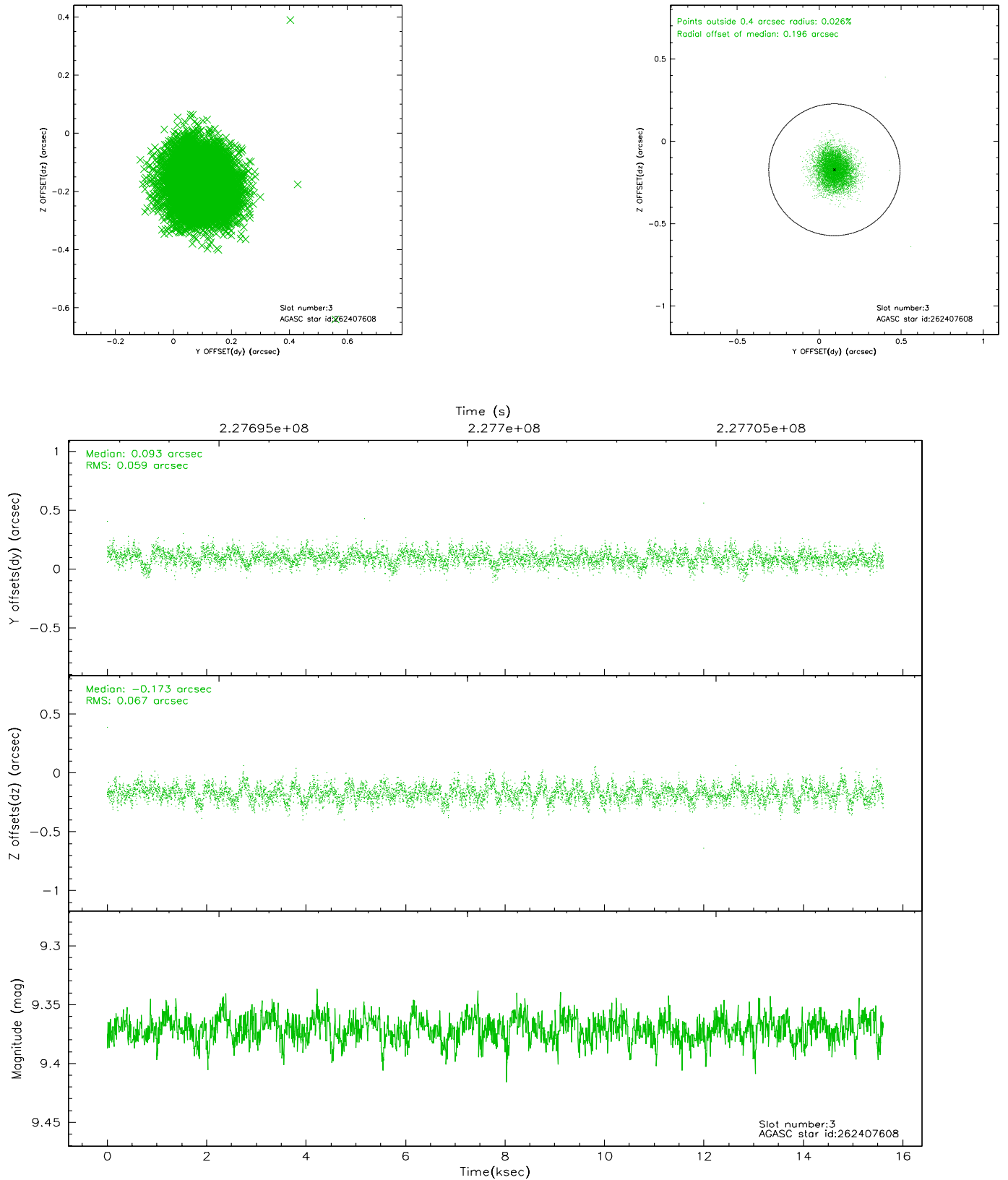


Slot Statistics

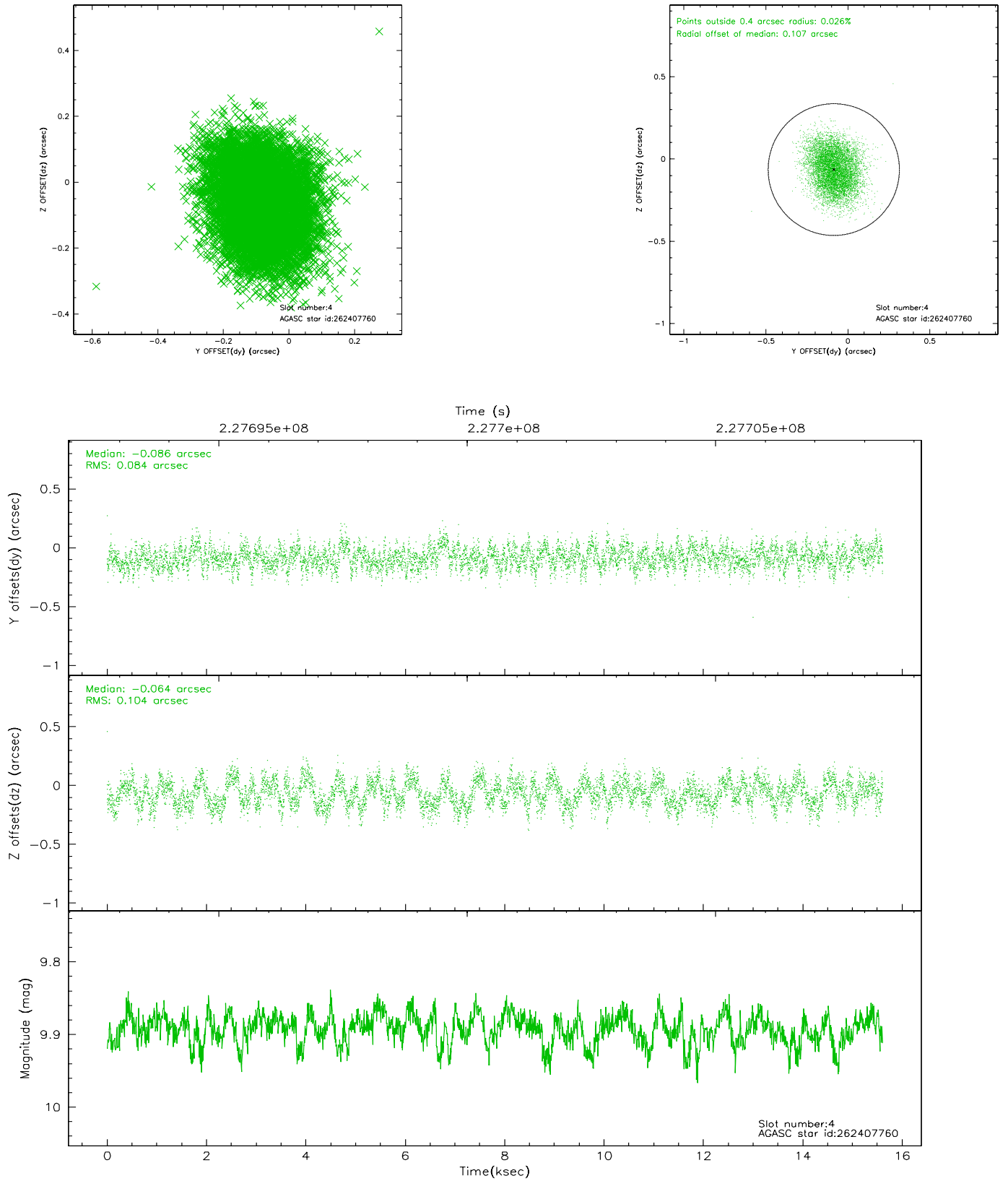
slot	status	id	mag	n_pts	med_dy	med_dz	dr1	dr2	ra	dec	mean_y	mean_z
0	FID	ACIS-I-1	7.35	3808	-0.105	0.165	0.007	0.012	0.000000	0.000000	930.66	-369.54
1	FID	ACIS-I-5	7.24	3807	-0.027	-0.026	0.007	0.012	0.000000	0.000000	-1817.32	1527.57
2	FID	ACIS-I-6	7.25	3808	0.041	-0.071	0.008	0.014	0.000000	0.000000	395.90	2172.45
3	GUIDE	262407608	9.37	7614	0.093	-0.173	0.096	0.153	207.378401	26.435507	-1087.06	33.07
4	GUIDE	262407760	9.89	7610	-0.086	-0.064	0.144	0.224	206.566773	26.577263	1008.72	1677.88
5	GUIDE	262407800	10.09	7605	-0.250	0.196	0.170	0.261	207.321181	27.251762	1262.01	-1740.98
6	GUIDE	262408096	9.36	7587	0.148	-0.027	0.112	0.188	207.011678	26.515421	-97.42	740.80
7	GUIDE	262408936	9.67	7609	0.087	0.066	0.153	0.238	207.154731	26.726554	176.81	-104.00

2.4 Star Slots

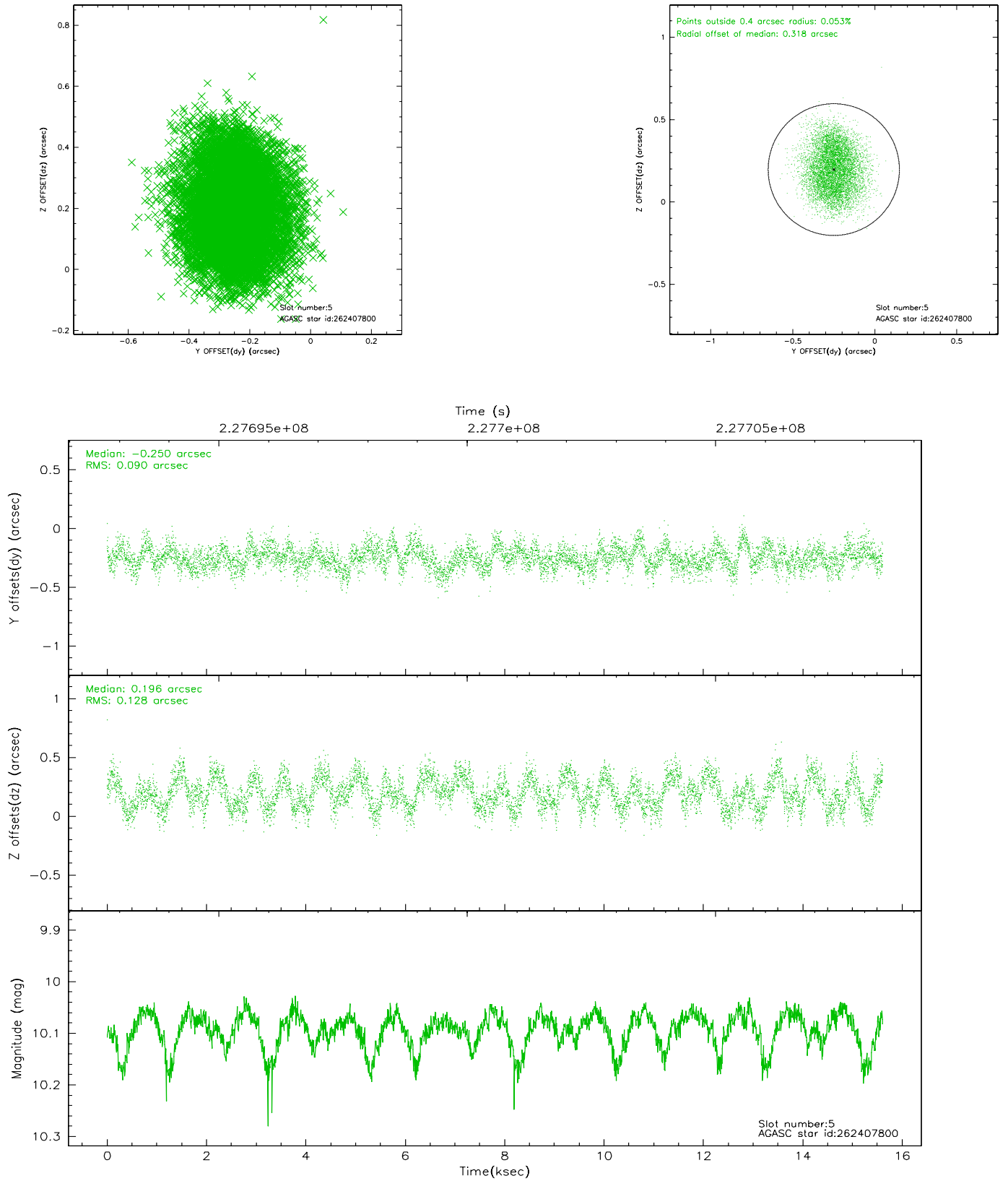
2.4.1 Slot 3



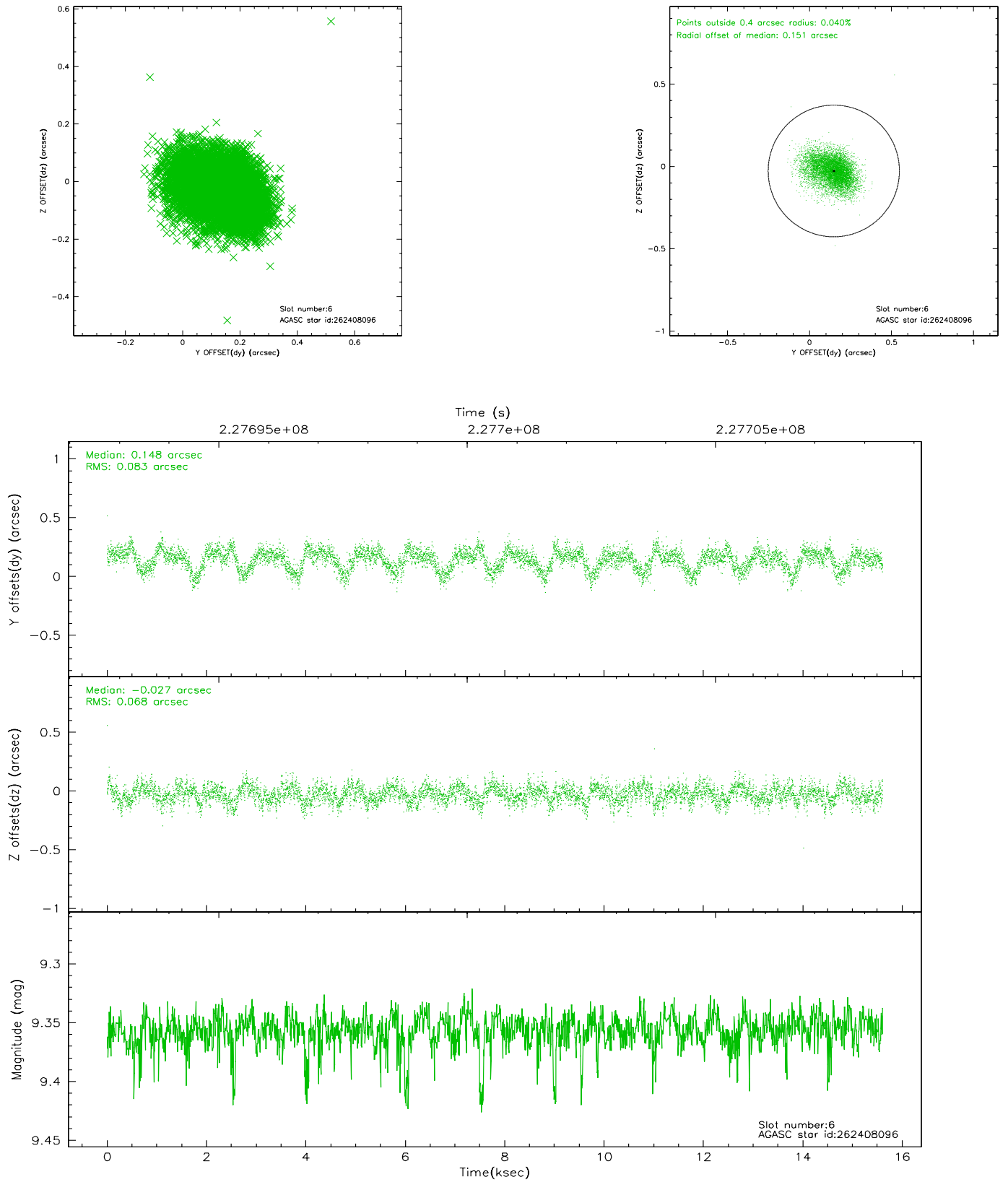
2.4.2 Slot 4



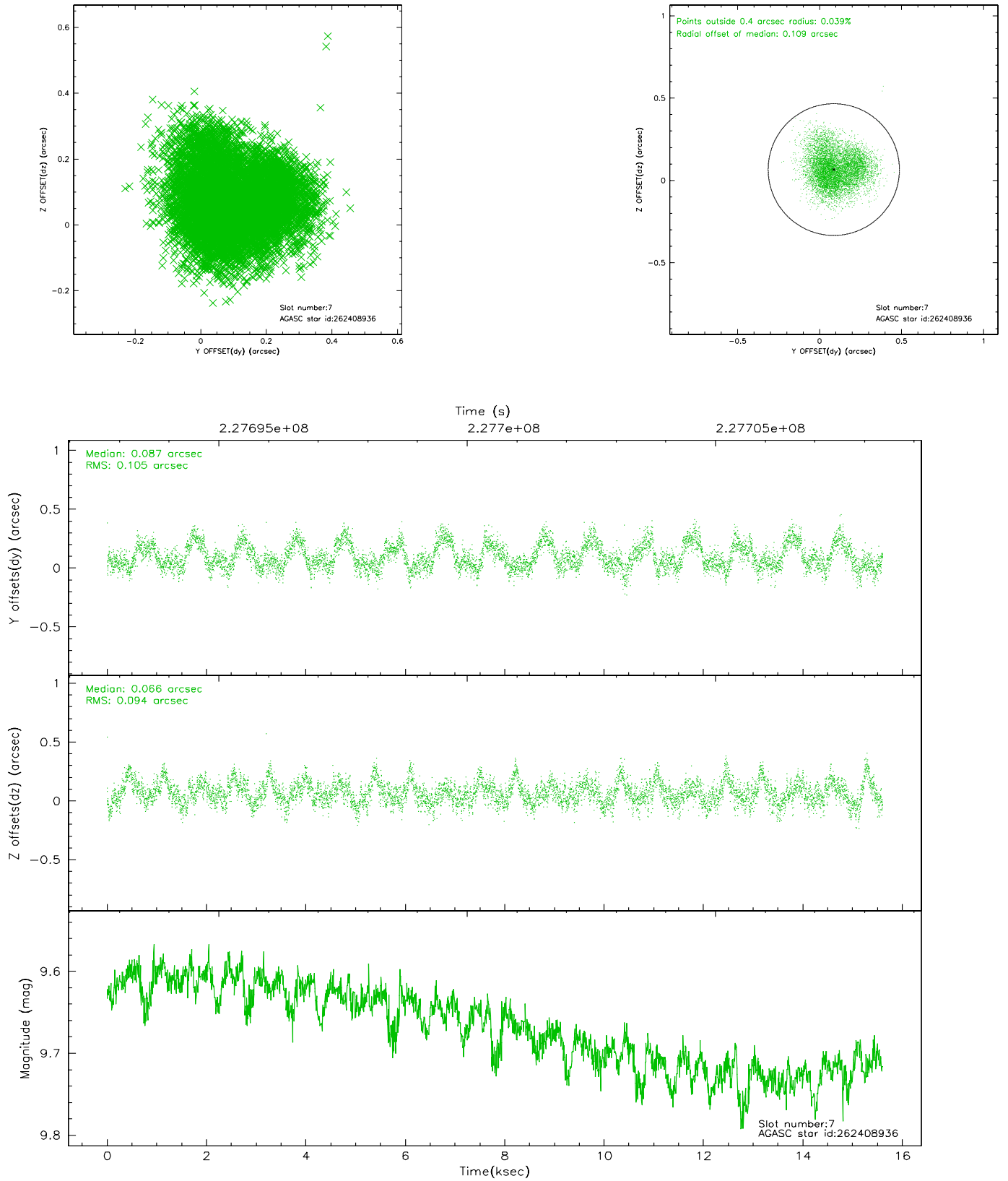
2.4.3 Slot 5



2.4.4 Slot 6

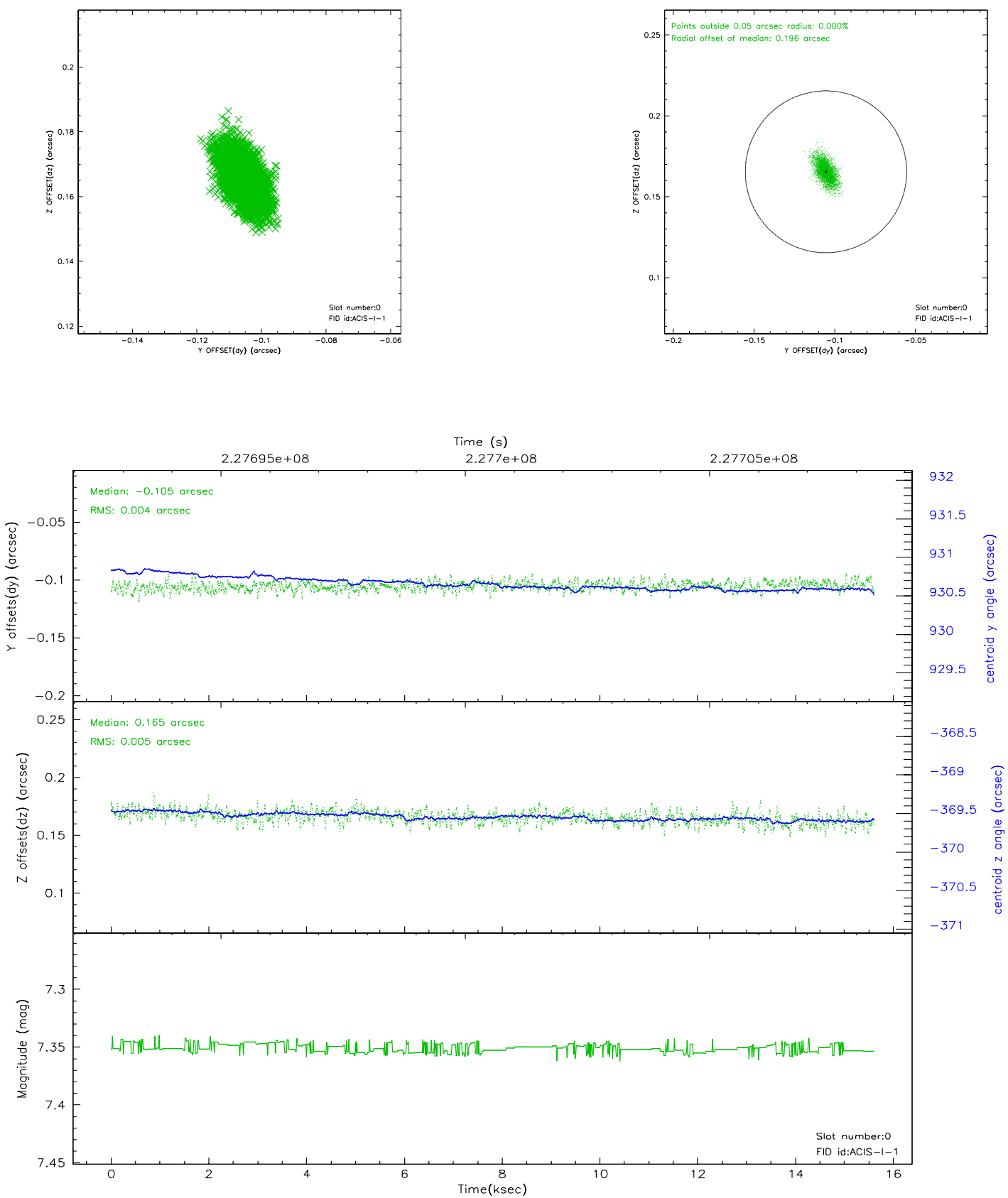


2.4.5 Slot 7

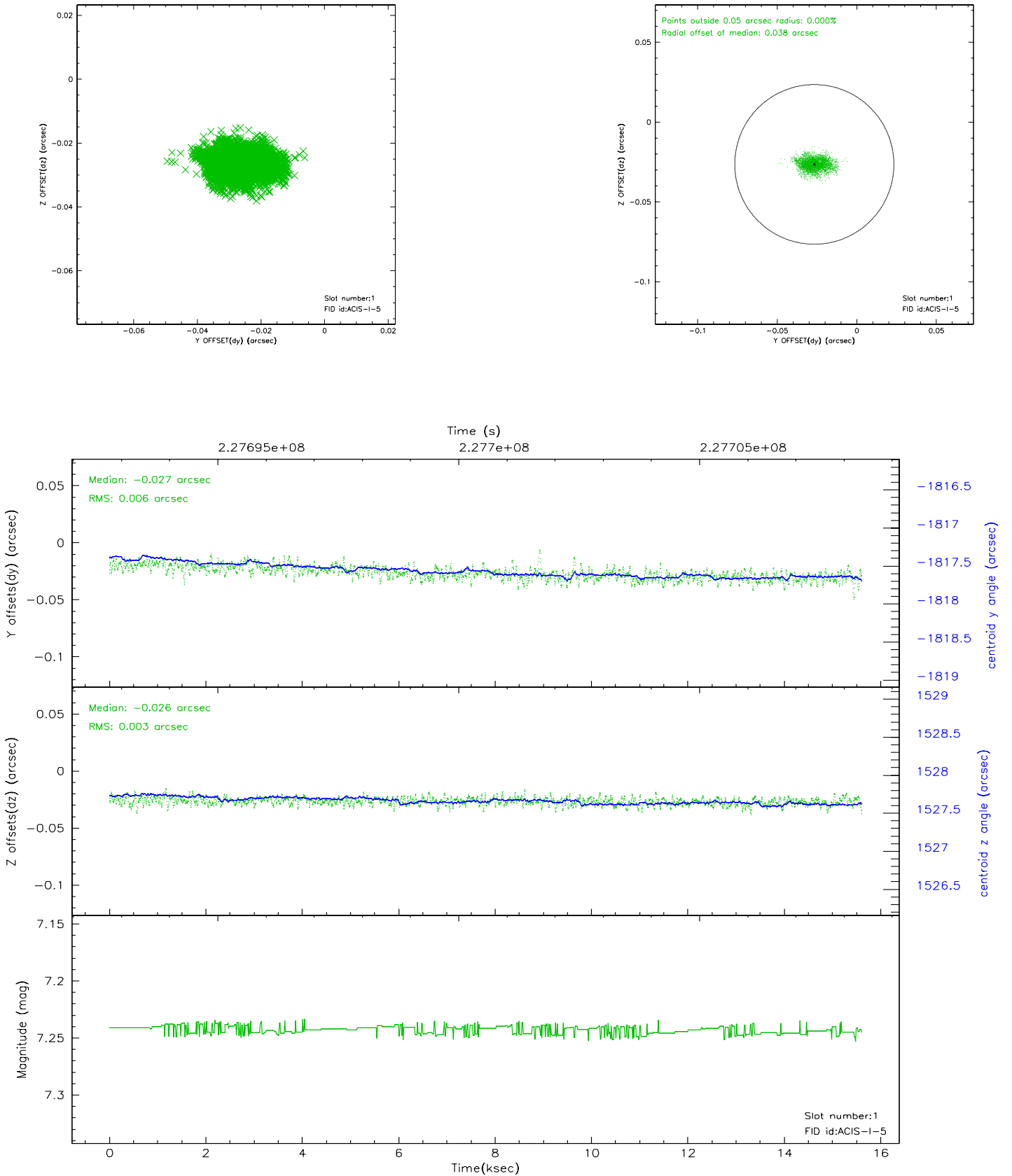


2.5 FID Slots

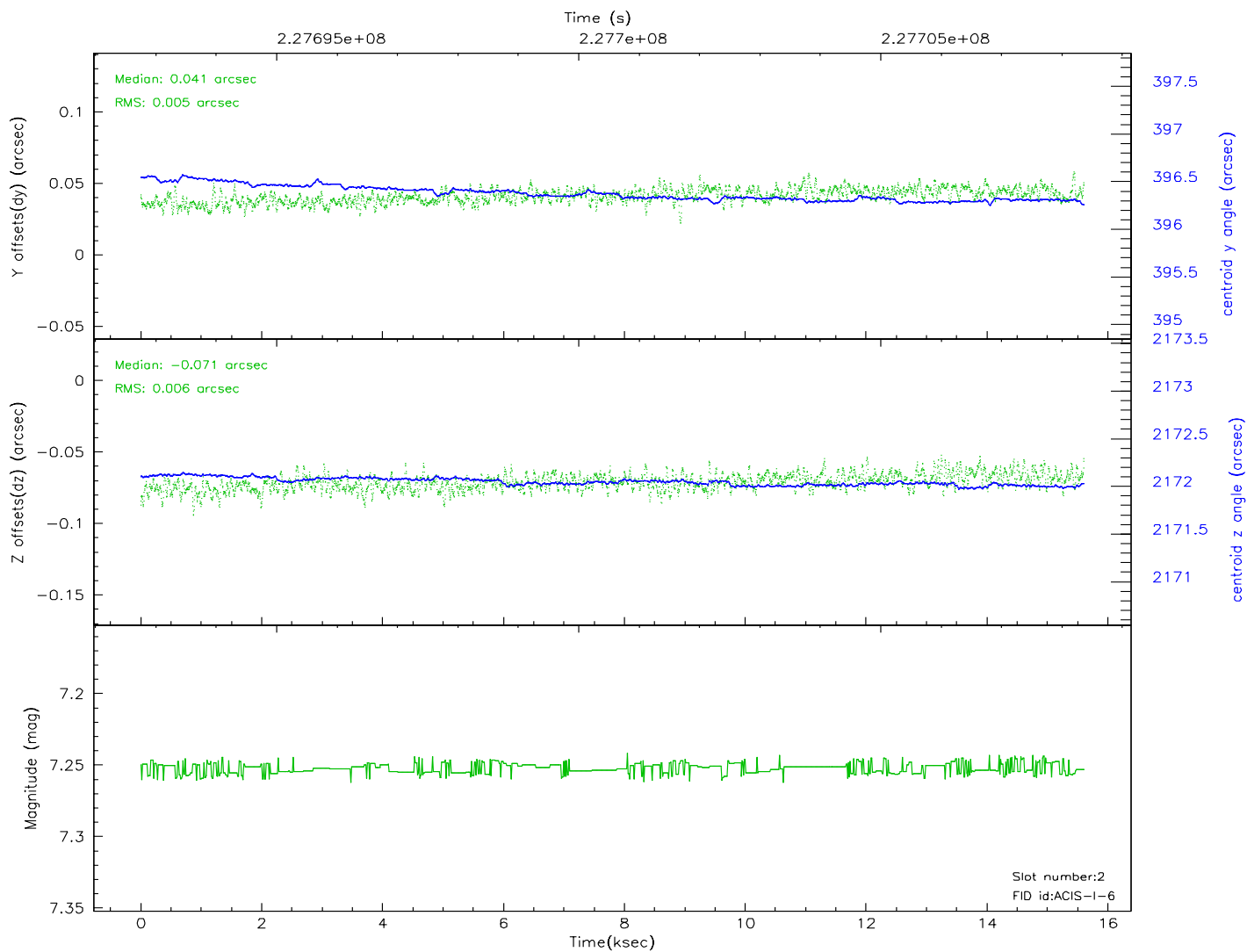
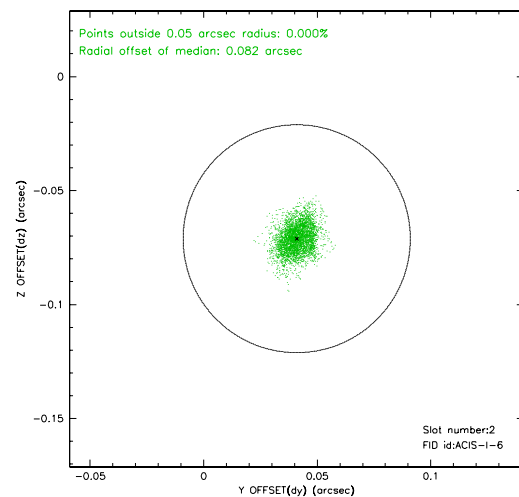
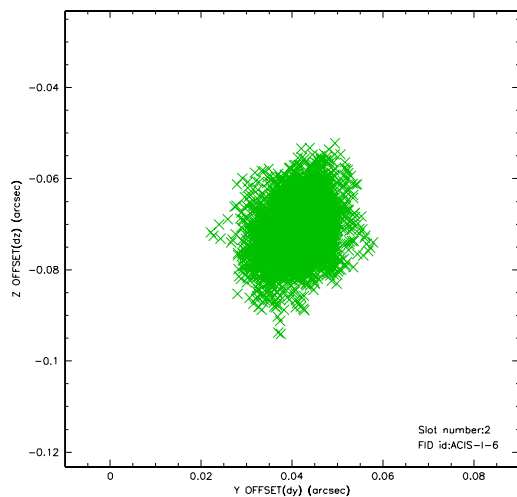
2.5.1 Slot 0



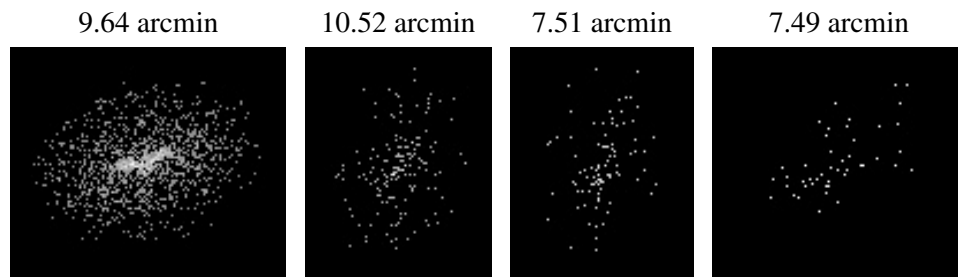
2.5.2 Slot 1



2.5.3 Slot 2



3 Point Sources



A Summary

A.1 Status

V&V Scientist	Beth Sundheim
V&V Date (YYYY-MM-DD)	2006.02.27
V&V Edition	1
V&V Disposition and Status	OK
V&V Charge Time	15.04735

A.2 Comments

Window constraint satisfied.