

V&V Reference Report

L2 ASCDS Version : 8.5.1.1

Observation 6157 - L2 Version 4
Chandra X-Ray Center

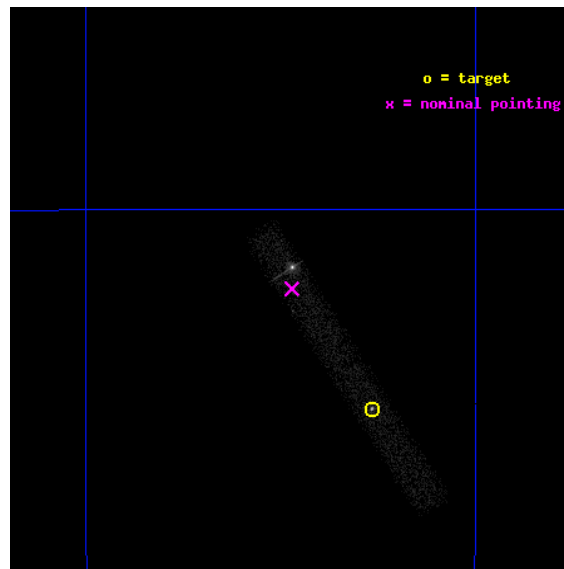
L2 Processing Date : Mar 7 2013

Contents

1	Front	2
2	OBI	3
2.1	OBI	3
2.1.1	Images	3
2.1.2	Bias	3
2.1.3	Parameters	4
2.1.4	Events	4
2.2	Compared Parameters	5
2.3	Aspect	6
2.4	Star Slots	9
2.4.1	Slot 3	9
2.4.2	Slot 4	10
2.4.3	Slot 5	11
2.4.4	Slot 6	12
2.4.5	Slot 7	13
2.5	FID Slots	14
2.5.1	Slot 0	14
2.5.2	Slot 1	15
2.5.3	Slot 2	16
A	Summary	17
A.1	Status	17
A.2	Comments	17

1 Front

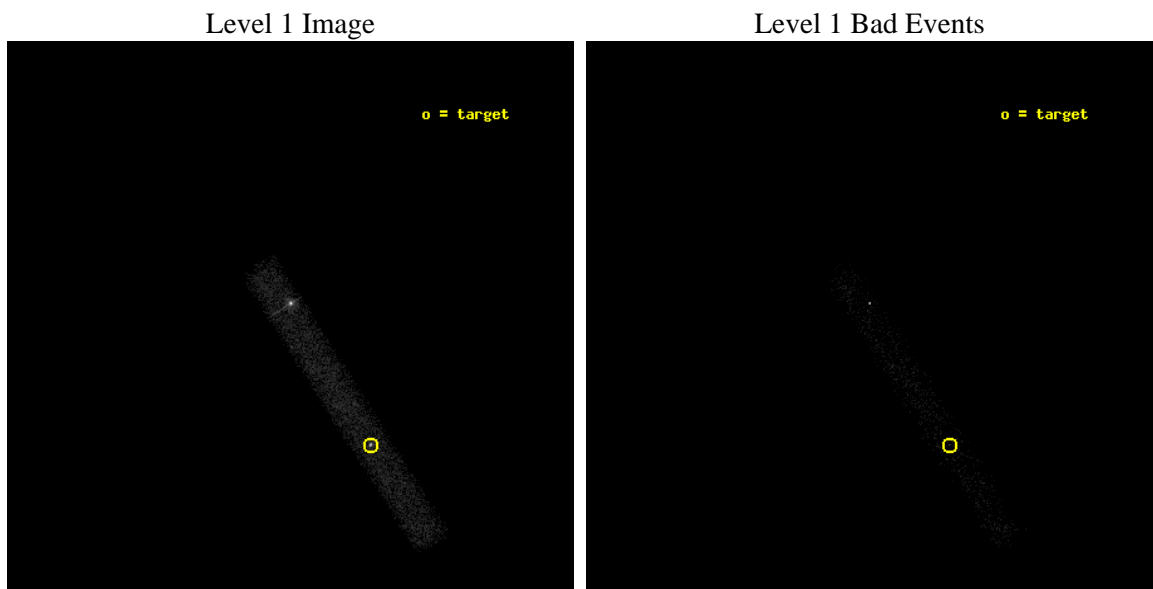
seq_num	590418	Sequence number
obs_id	6157	Observation id
title	Calibrating Pile-up in ACIS Imaging Data with PSRJ0437-4715	Propos
observer	Dr. CXC Calibration	Principal investigator
object	PSR J0437-4715	Source name
dtcycle	0	
cycle	P	events from which exps? Prim/Second/Both
ra_targ	69.315833	Observer's specified target RA [deg]
dec_targ	-47.252333	Observer's specified target Dec [deg]
ra_nom	69.367798912861	Nominal RA [deg]
dec_nom	-47.200864052177	Nominal Dec [deg]
roll_nom	57.281796951907	Nominal Roll [deg]
revision	4	Processing version of data
ontime	9449.6001407802	Sum of GTIs [s]
livetime	8570.2885368948	Livetime [s]
ontime7	9449.6001407802	Sum of GTIs [s]
l2events	19455	Number of level 2 events



2 OBI

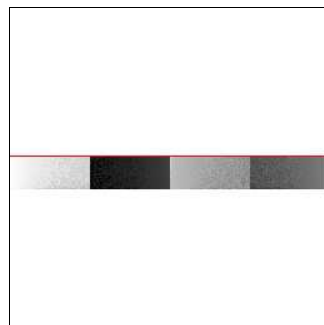
2.1 OBI

2.1.1 Images



2.1.2 Bias

Chip 7



2.1.3 Parameters

obi_num	0	Obi number	sched_exp_time	9265.809000	[s] Scheduled observation exposure time
ascdsver	8.5.1.1	Processing system revision	ontime	9449.6001407802	Sum of GTIs [s]
caldsver	4.5.6	 	ontime7	9449.6001407802	Sum of GTIs [s]
date	2013-03-07T19:01:20	Date and time of file creation	l1events	26955	Number of level 1 events
revision	4	Processing version of data			

2.1.4 Events

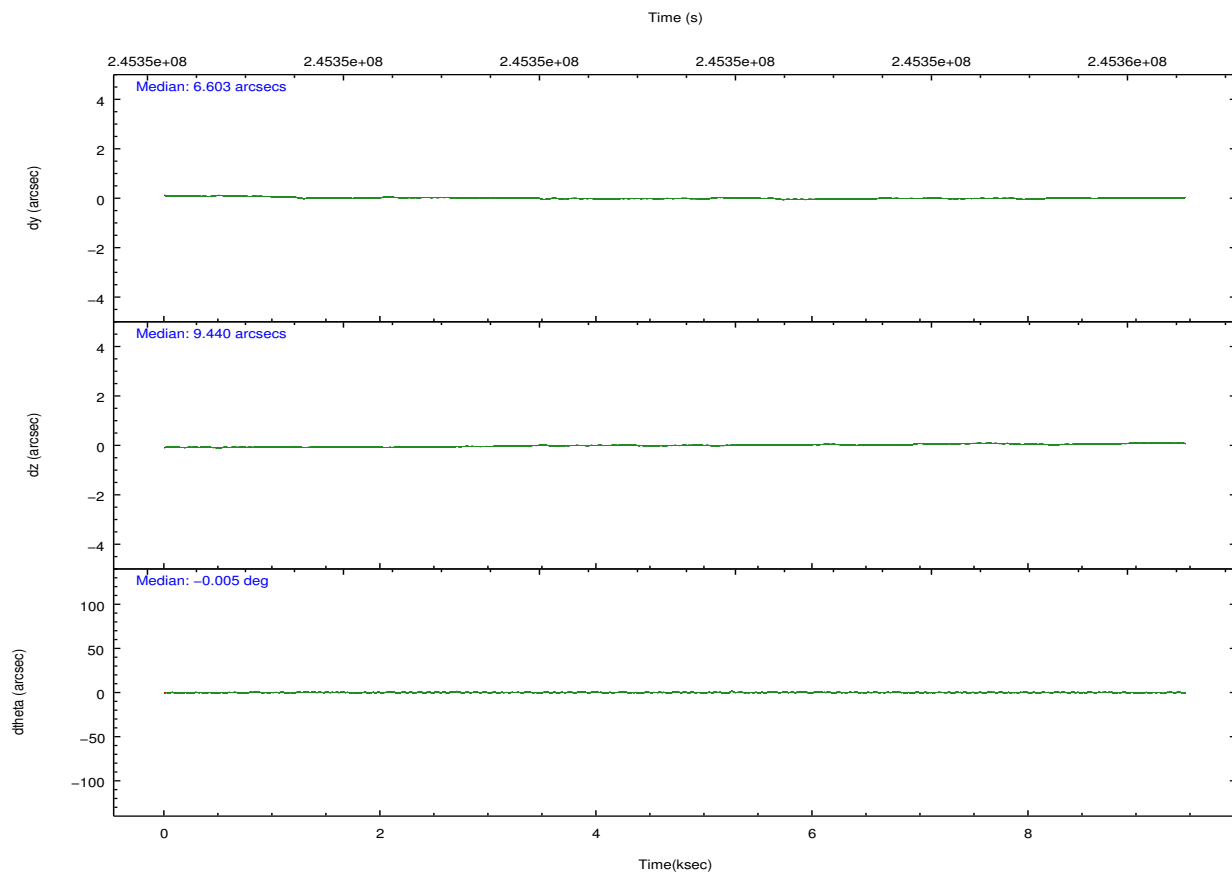
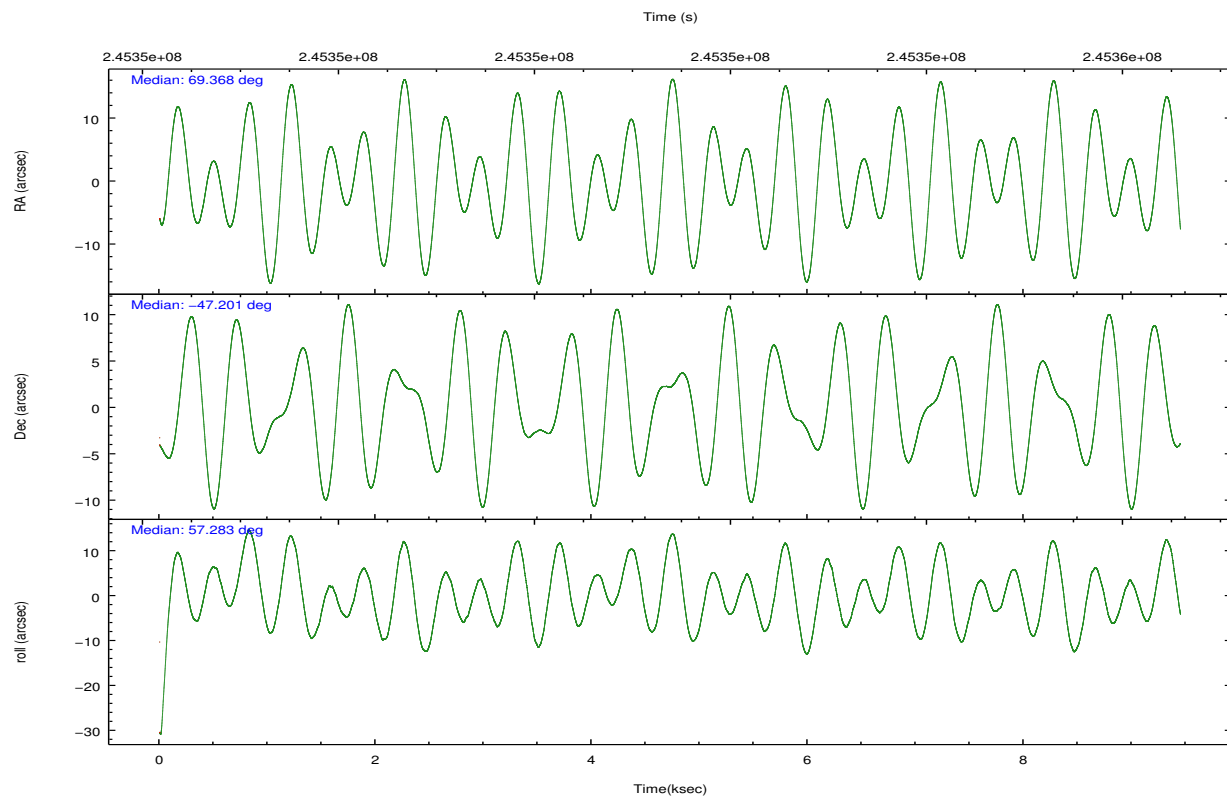
	ccd 7
level 1 events	26955
rejected events	7326
rejected %	27%

	ccd 7
grade 0 events	5722
	21%
grade 1 events	251
	0%
grade 2 events	4464
	16%
grade 3 events	2230
	8%
grade 4 events	2221
	8%
grade 5 events	1704
	6%
grade 6 events	5358
	19%
grade 7 events	5005
	18%

2.2 Compared Parameters

Parameter	Planned	Actual	Parameter	Planned	Actual
Instrument	ACIS	ACIS	Obspar format version number	7	7
Detector	ACIS-7	ACIS-7	Obspar file type	PREDICTED	ACTUAL
Grating	NONE	NONE	Obspar update status	NONE	UPDATED
Data mode	VFAINT	VFAINT	Number of optional ACIS chips dropped	0	0
Observation mode	POINTING	POINTING	On-chip summing requested	N	N
[deg] Pointing RA	69.366410	69.36779891286064	Subarray requested	CUSTOM	CUSTOM
[deg] Pointing Dec	-47.228083	-47.20086405217652	Subarray start row	448	448
[deg] Pointing Roll	57.124182	57.28179695190659	Subarray row count	101	101
[s] Window start time (MET)	244512064.184000	244512064.184000	Alternating exposures requested	N	N
[s] Window stop time (MET)	247190404.184000	247190404.184000	[s] Primary exposure time	0.000000	0.4
[mm] SIM focus pos	-0.684267	-0.6828225247311905			
[mm] SIM defocus	0	0.001444936568705701			
[mm] SIM translation stage pos	-190.132523	-190.1425803651734			
[mm] SIM translation stage offset	0	0.01005778216563158			
[s] Observation start time (MET)	245346849.184000	245345974.58737			
Observation start date	2005-10-10T15:53:05	2005-10-10T15:39:34			
[s] Observation end time (MET)	245356114.184000	245356336.31285			
Observation end date	2005-10-10T18:27:30	2005-10-10T18:32:16			
Read mode	TIMED	TIMED			

2.3 Aspect

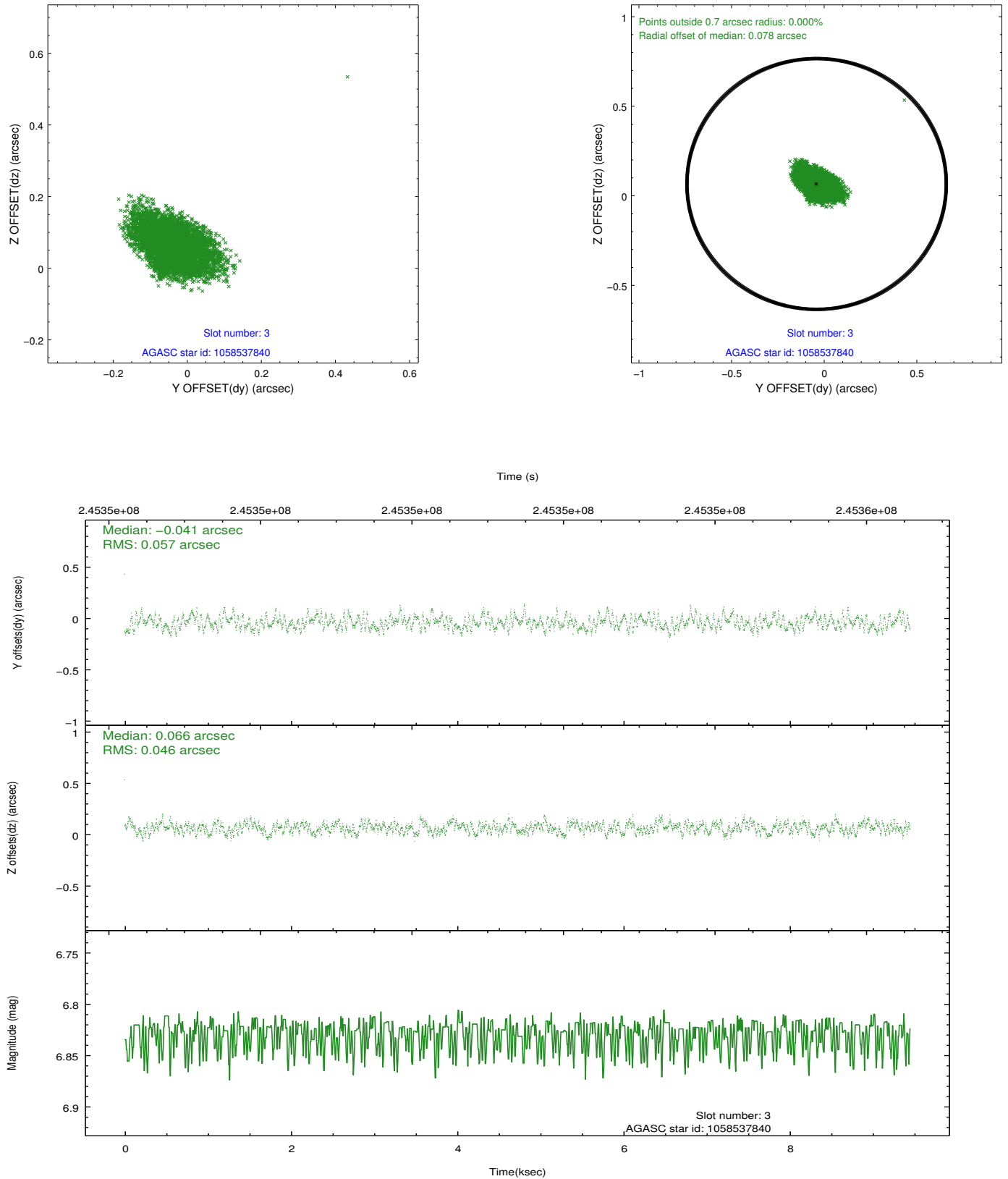


Slot Statistics

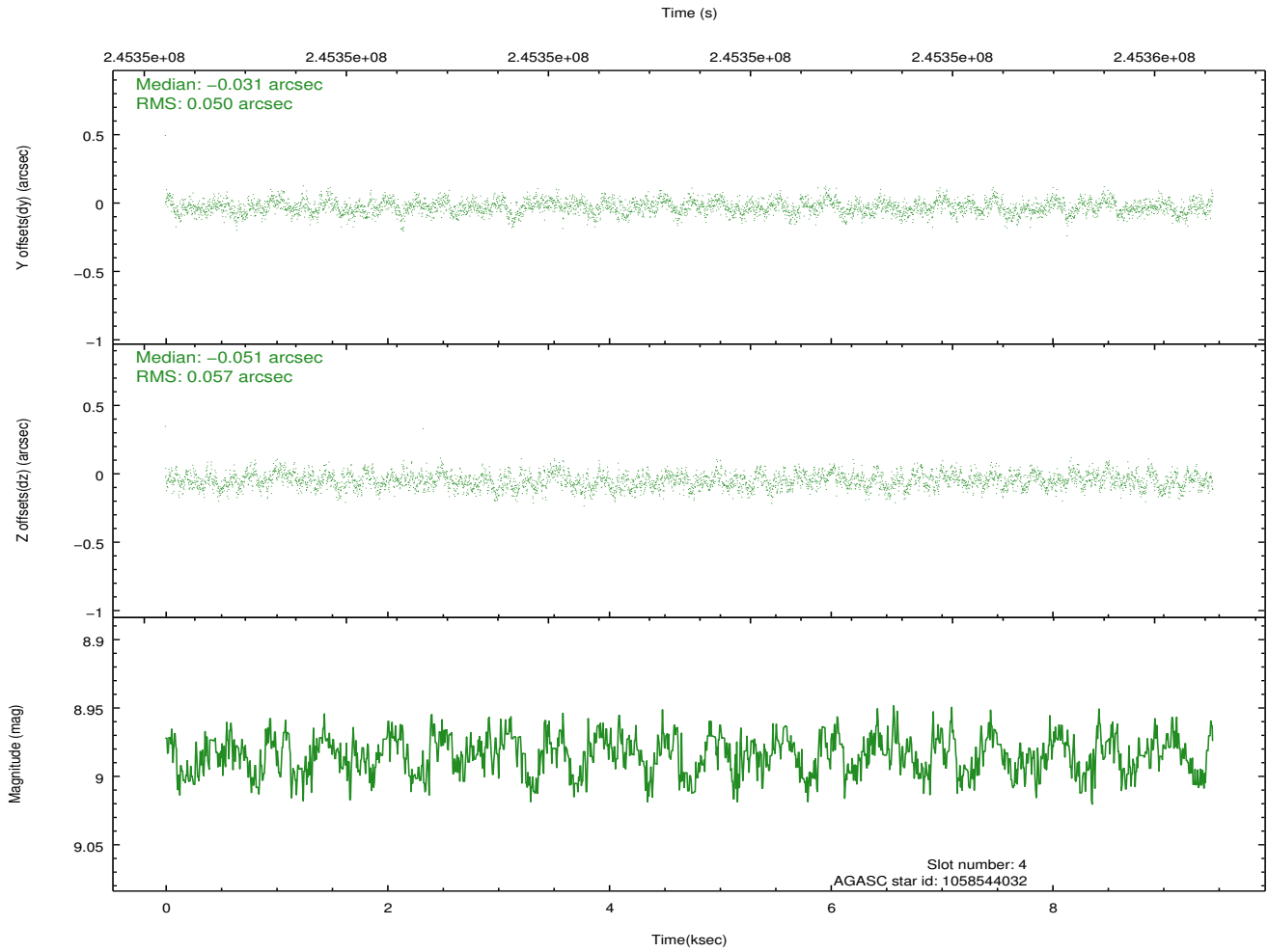
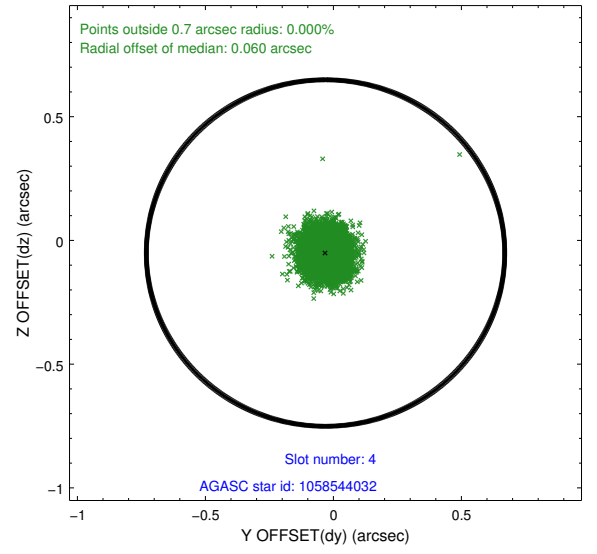
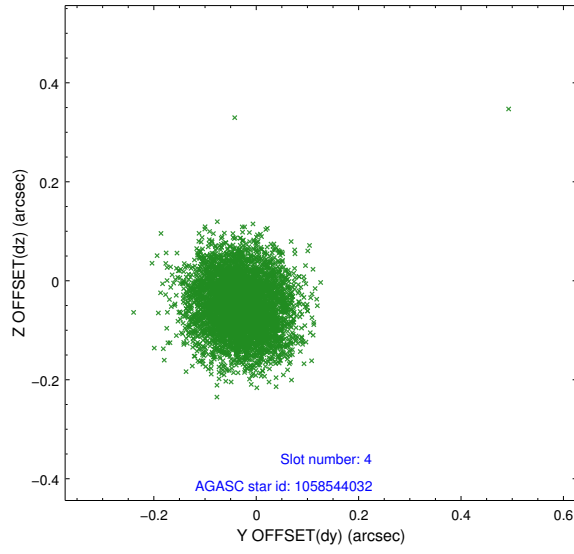
slot	status	id	mag	n_pts	med_dy	med_dz	dr1	dr2	ra	dec	mean_y	mean_z
0	FID	ACIS-S-2	7.10	2305	-0.058	-0.047	0.008	0.012	0.000000	0.000000	-759.39	-1730.67
1	FID	ACIS-S-4	7.21	2305	0.110	0.040	0.006	0.010	0.000000	0.000000	2153.78	177.34
2	FID	ACIS-S-5	7.23	2305	-0.084	0.015	0.007	0.012	0.000000	0.000000	-1811.54	171.60
3	GUIDE	1058537840	6.83	4611	-0.041	0.066	0.078	0.126	70.442463	-47.259783	1317.04	-2279.33
4	GUIDE	1058544032	8.98	4607	-0.031	-0.051	0.081	0.128	69.576631	-47.141596	541.03	-263.91
5	GUIDE	1058931064	9.48	4605	0.123	0.034	0.113	0.188	69.760694	-47.722390	-977.60	-1768.88
6	GUIDE	1058932104	9.96	4605	0.003	0.019	0.145	0.233	69.775154	-47.961562	-1684.84	-2262.33
7	GUIDE	1058542336	9.64	4609	-0.054	-0.066	0.118	0.190	69.740954	-46.597293	2408.27	453.08

2.4 Star Slots

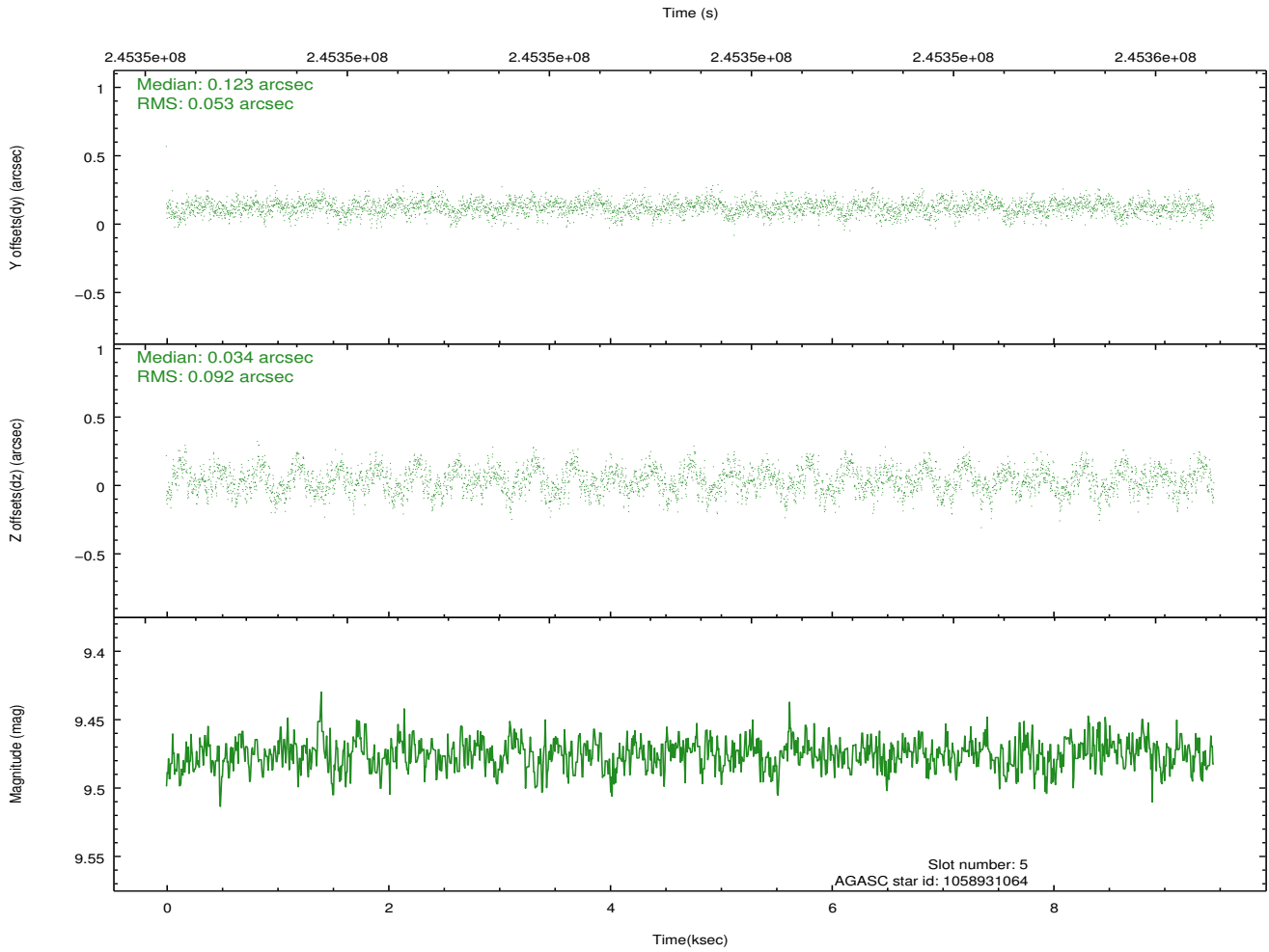
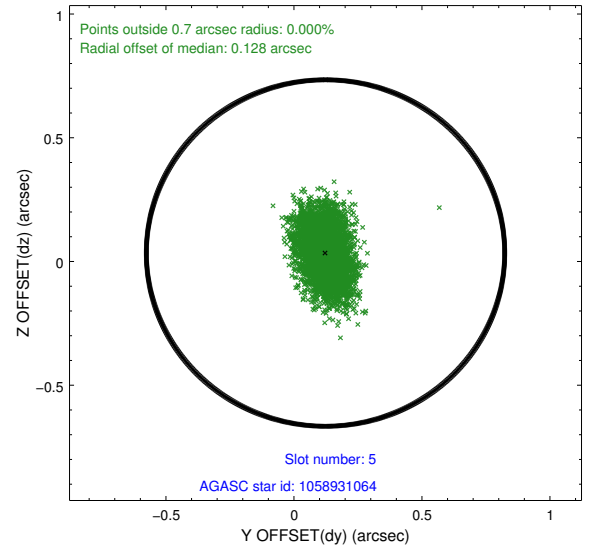
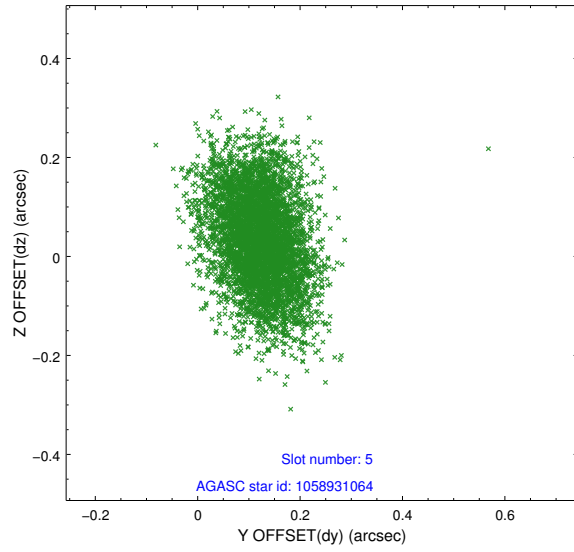
2.4.1 Slot 3



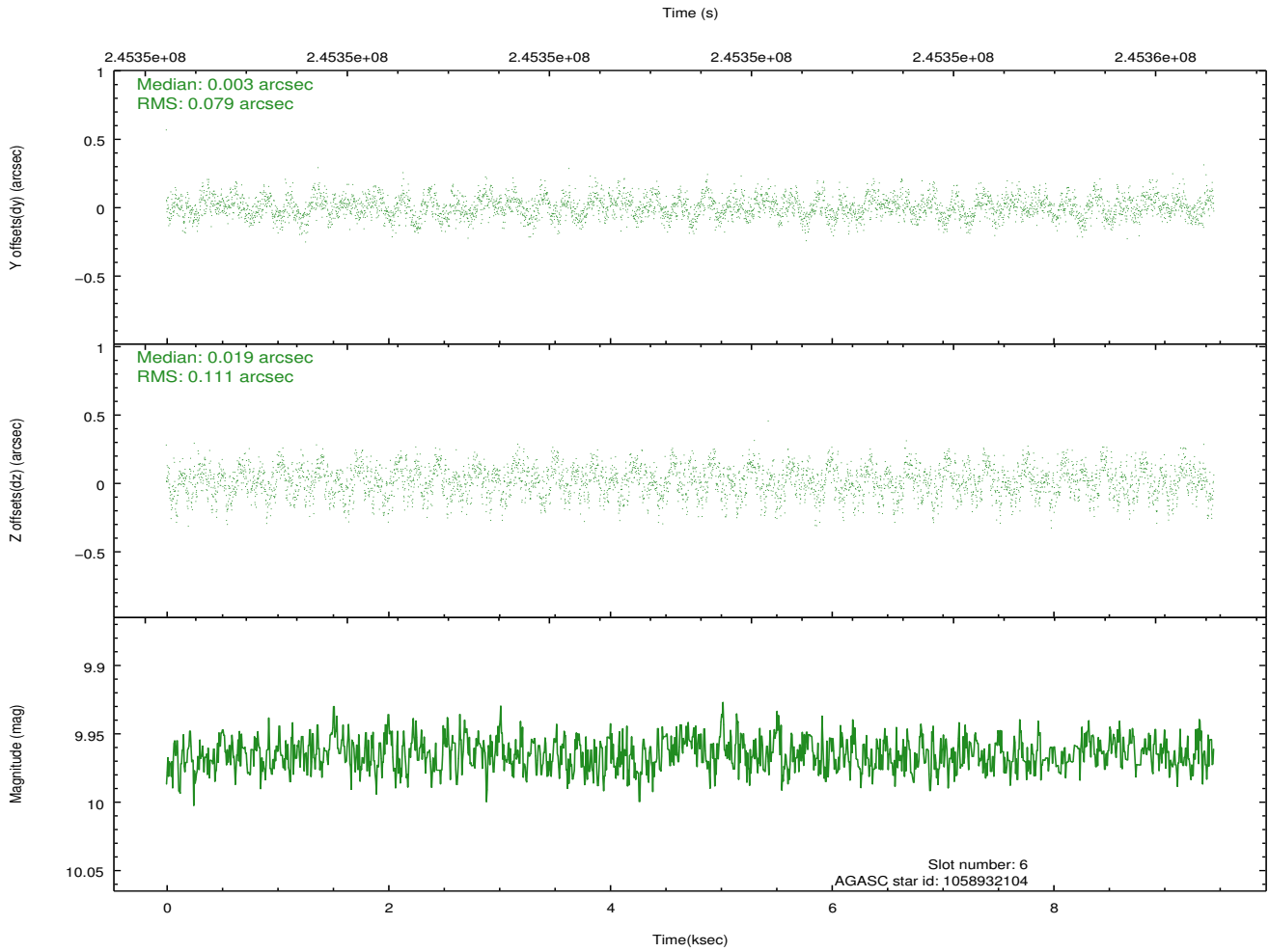
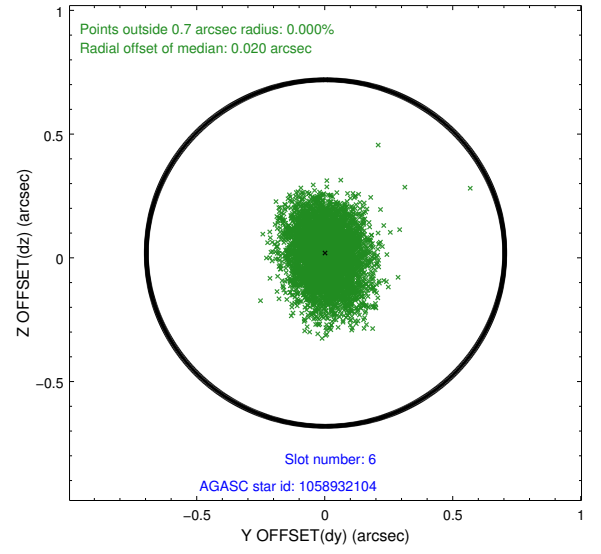
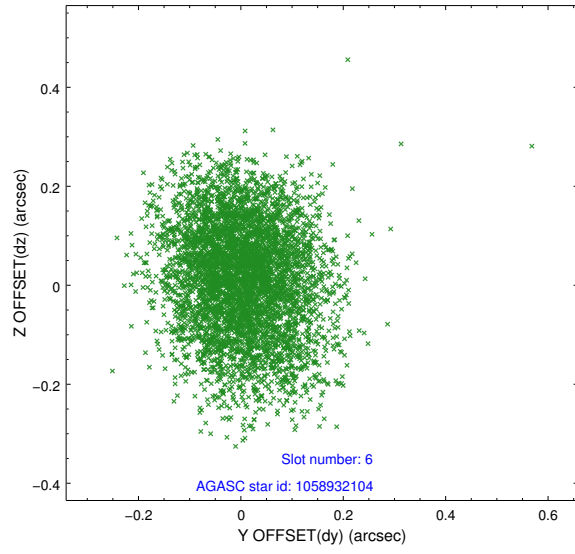
2.4.2 Slot 4



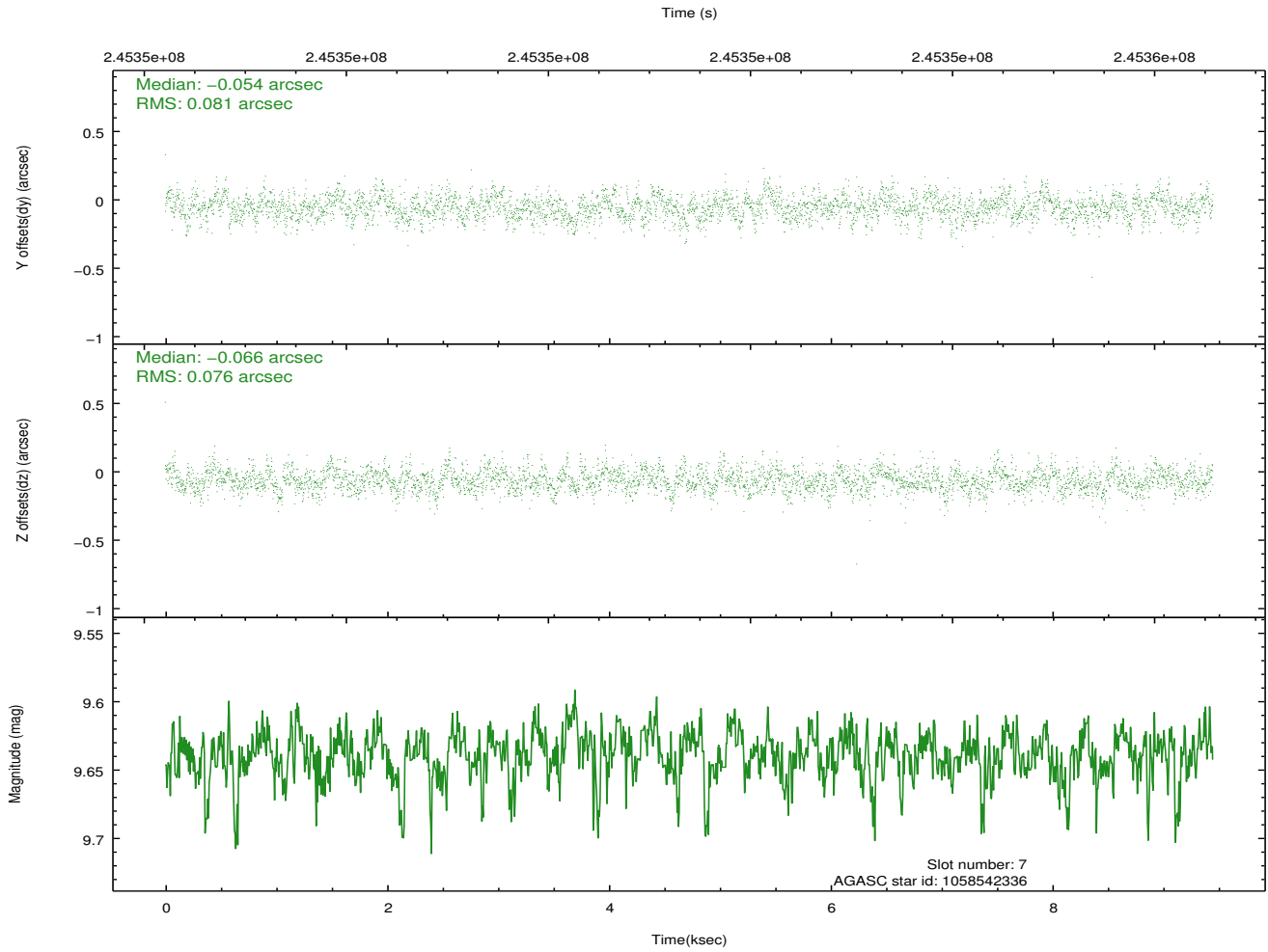
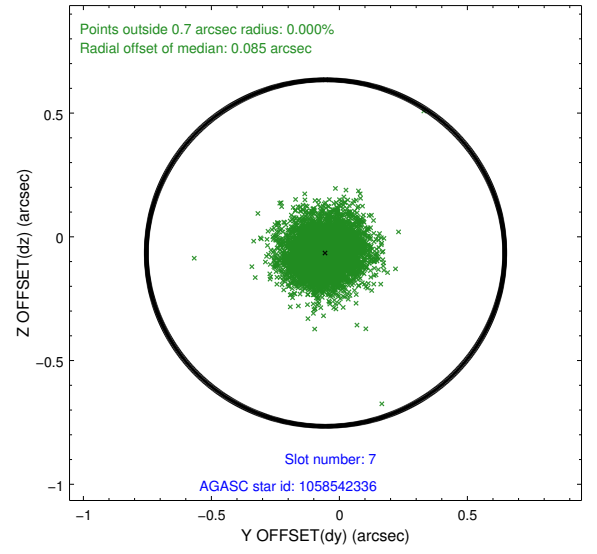
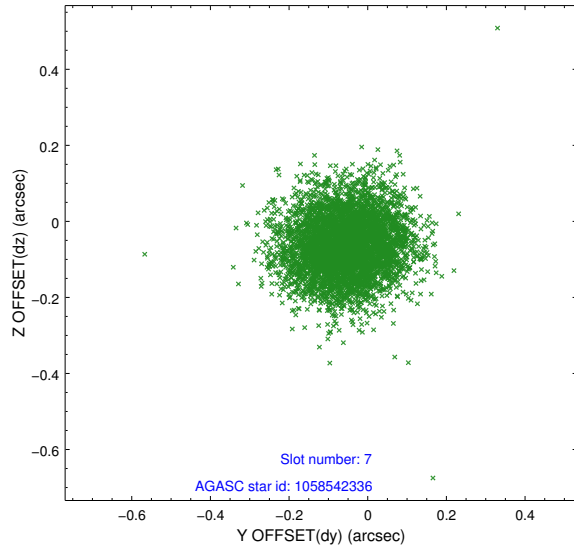
2.4.3 Slot 5



2.4.4 Slot 6

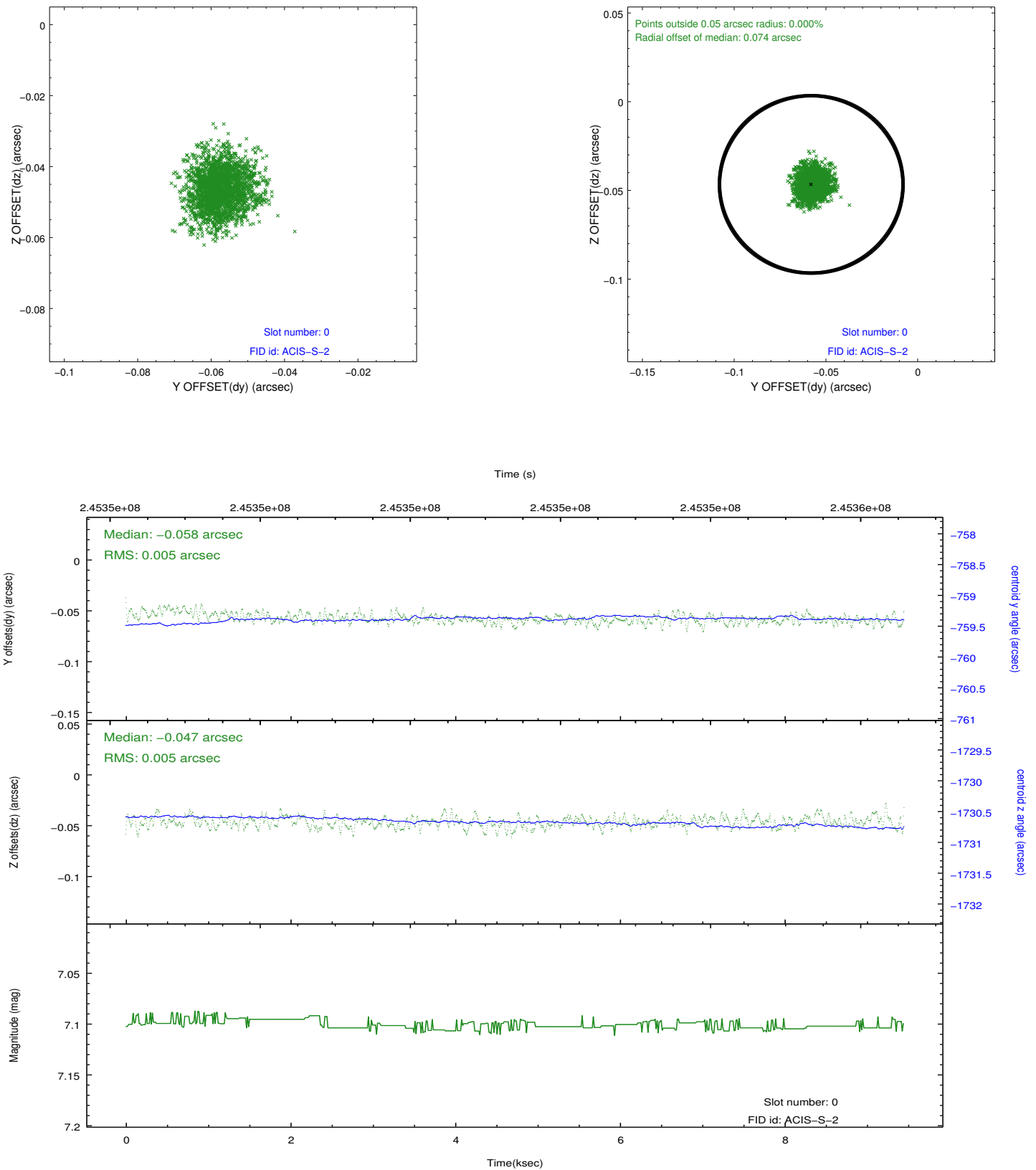


2.4.5 Slot 7

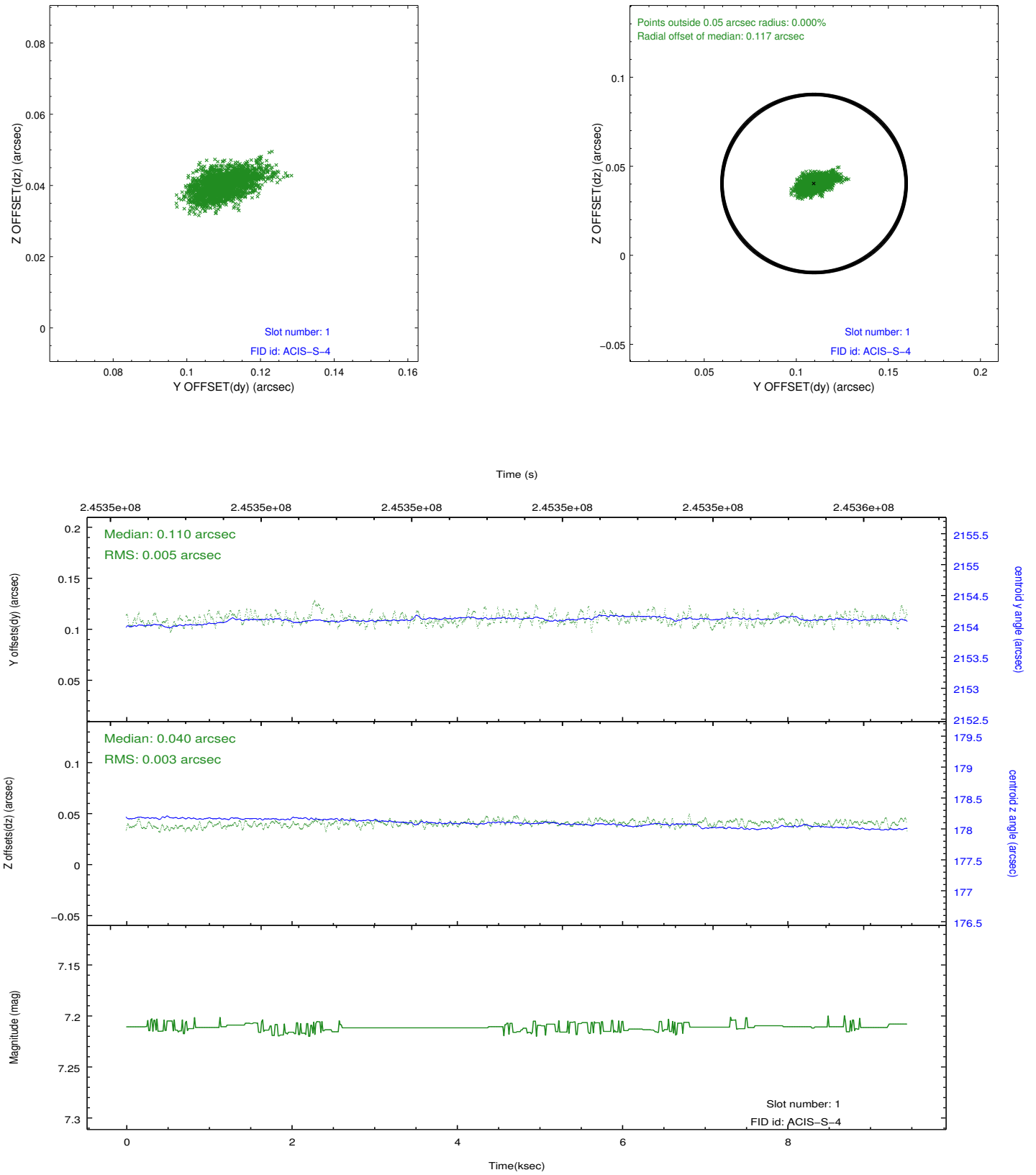


2.5 FID Slots

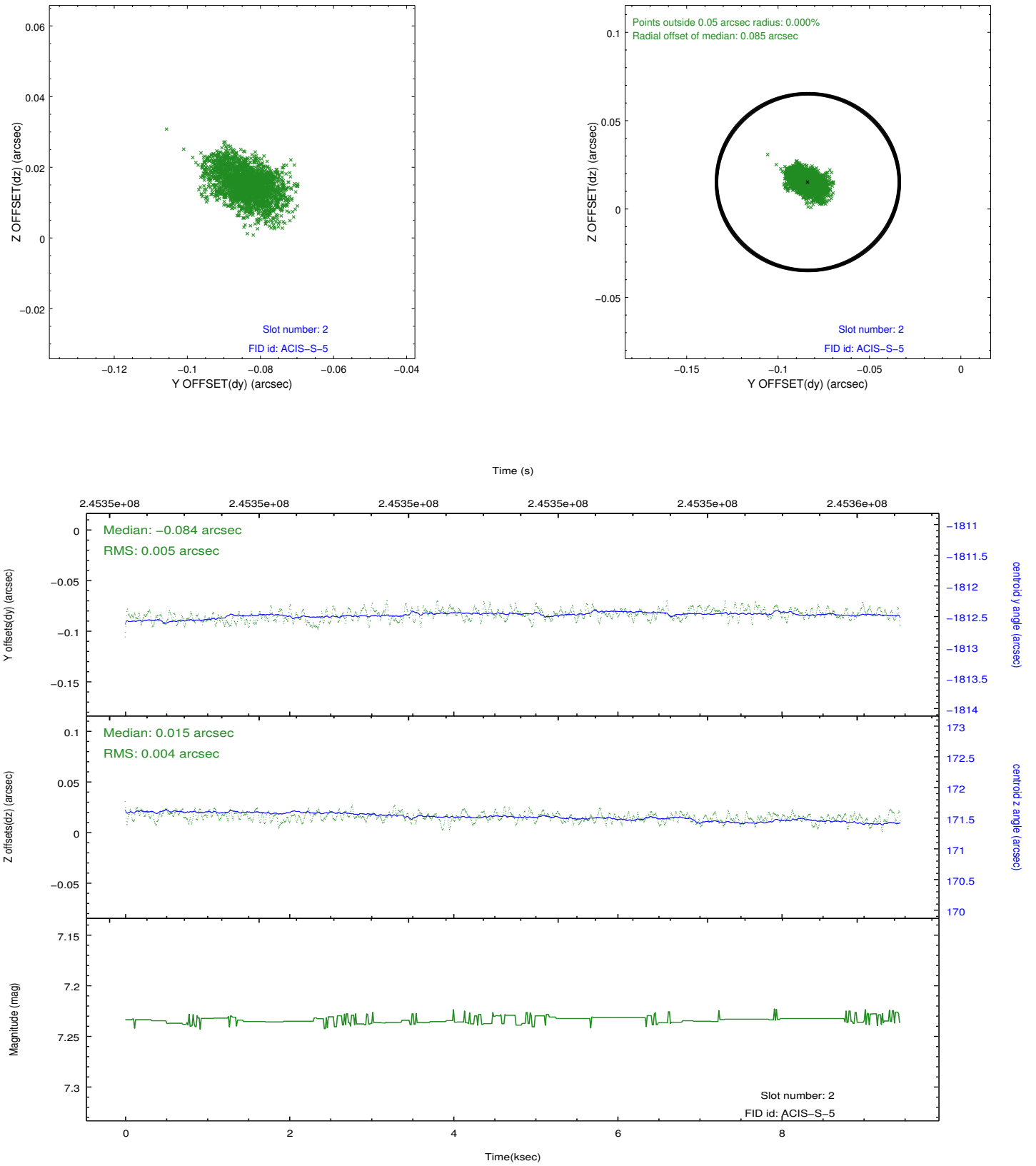
2.5.1 Slot 0



2.5.2 Slot 1



2.5.3 Slot 2



A Summary

A.1 Status

V&V Scientist	Beth Sundheim
V&V Date (YYYY-MM-DD)	2013.03.07
V&V Edition	1
V&V Disposition and Status	OK
V&V Charge Time	9.4496

A.2 Comments

Window preference met.

As a consequence of the DEA-A shutdown anomaly on Sep 15th (DOY258), the reported value of the ACIS FP temperature was ~1.3 degrees warmer than the actual temperature. The value for FP temperature reported in the headers of the Level 2 event file and the Mission Timeline files are incorrect by this amount for this processing. However, the temperature is corrected in the processing in order to obtain the correct temperature for the CTI correction. So the calibrated data are correct. If using the FP temp values in the headers of data files (some CIAO tools require this information), investigators should subtract 1.3 degrees from the reported temperature to determine the true temperature.