

V&V Reference Report

L2 ASCDS Version : 8.4.5

Observation 5166 - L2 Version 3
Chandra X-Ray Center

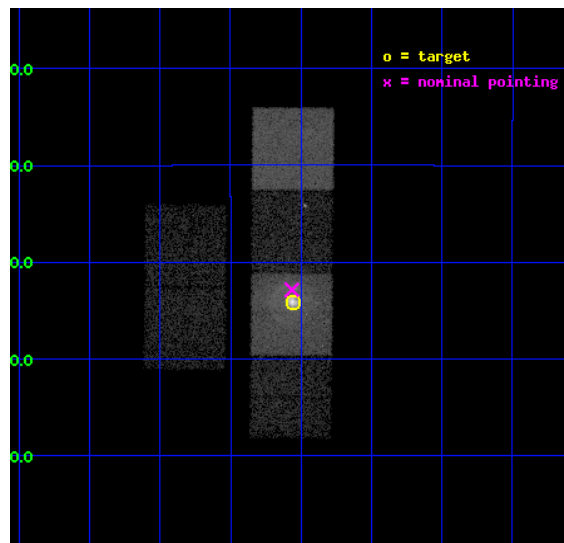
L2 Processing Date : Nov 13 2012

Contents

1	Front	2
2	OBI	3
2.1	OBI	3
2.1.1	Images	3
2.1.2	Bias	3
2.1.3	Parameters	4
2.1.4	Events	4
2.2	Compared Parameters	5
2.3	Aspect	6
2.4	Star Slots	9
2.4.1	Slot 3	9
2.4.2	Slot 4	10
2.4.3	Slot 5	11
2.4.4	Slot 6	12
2.4.5	Slot 7	13
2.5	FID Slots	14
2.5.1	Slot 0	14
2.5.2	Slot 1	15
2.5.3	Slot 2	16
A	Summary	17
A.1	Status	17
A.2	Comments	17

1 Front

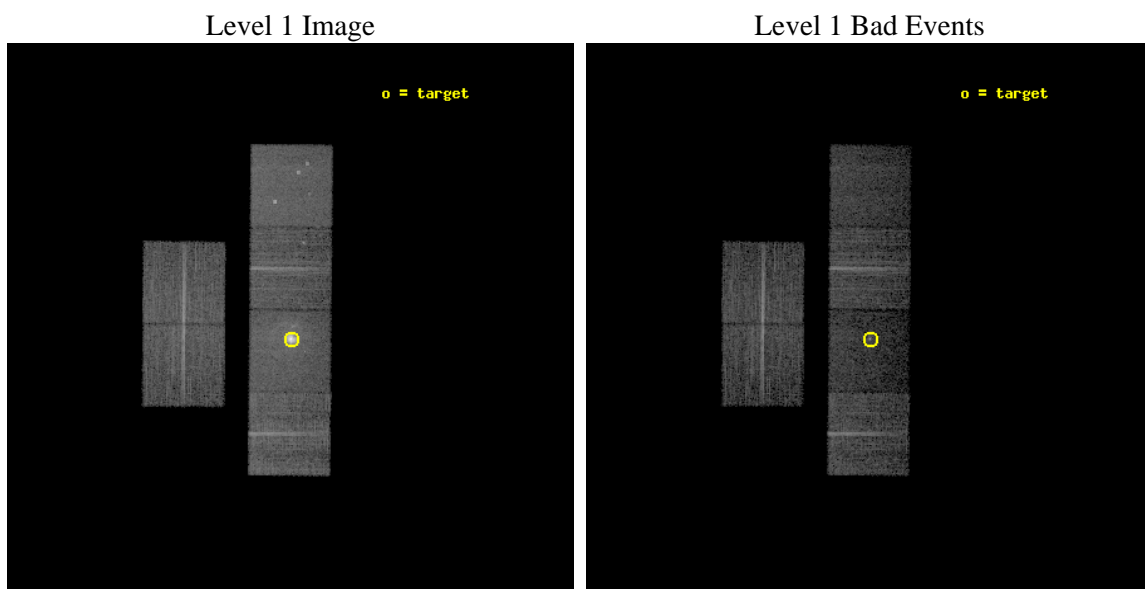
seq_num	590364	Sequence number
obs_id	5166	Observation id
title	AO5A Observations of the Standard Candles Cas A and G21.5-09	Propo
observer	Dr. CXC Calibration	Principal investigator
object	G21.5-09[S3,-120,-1.0,0,0]	Source name
dtcycle	0	
cycle	P	events from which exps? Prim/Second/Both
ra_targ	278.389583	Observer's specified target RA [deg]
dec_targ	-10.568528	Observer's specified target Dec [deg]
ra_nom	278.39113160617	Nominal RA [deg]
dec_nom	-10.547794550863	Nominal Dec [deg]
roll_nom	90.443923798093	Nominal Roll [deg]
revision	3	Processing version of data
ontime	10143.999962211	Sum of GTIs [s]
livetime	10015.550526706	Livetime [s]
ontime2	10143.999962211	Sum of GTIs [s]
ontime3	10143.999962211	Sum of GTIs [s]
ontime5	10143.999962211	Sum of GTIs [s]
ontime6	10143.999962211	Sum of GTIs [s]
ontime7	10143.999962211	Sum of GTIs [s]
ontime8	10143.999962211	Sum of GTIs [s]
l2events	117229	Number of level 2 events



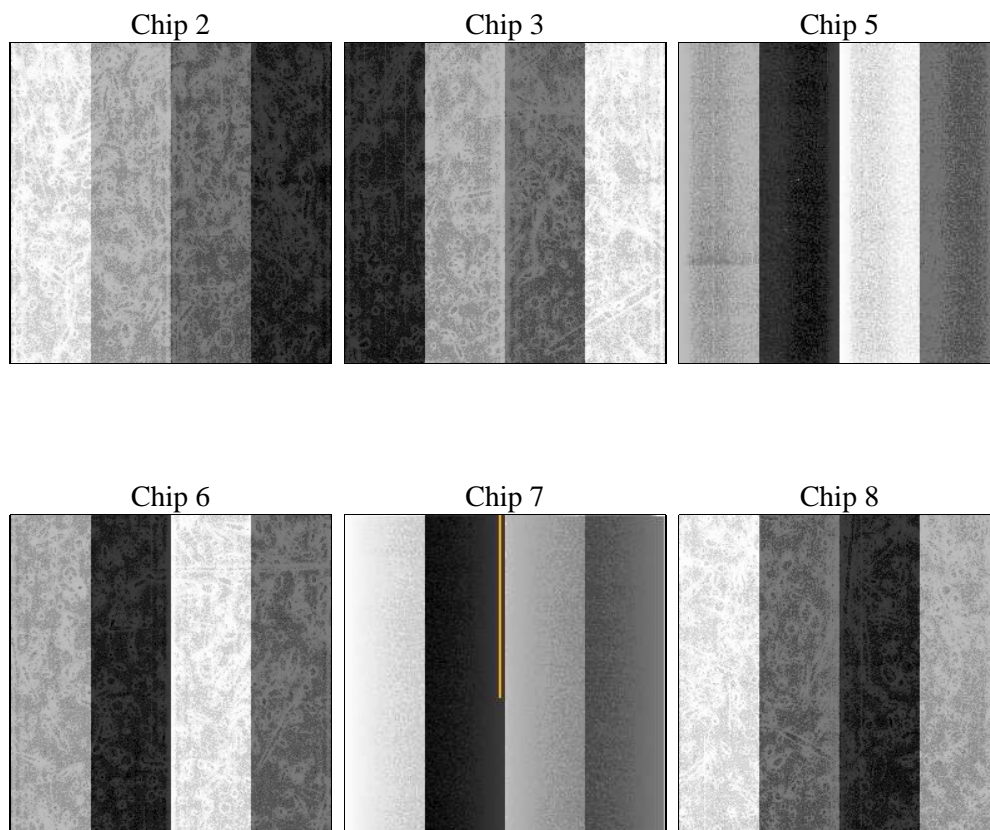
2 OBI

2.1 OBI

2.1.1 Images



2.1.2 Bias



2.1.3 Parameters

obi_num	1	Obi number	sched_exp_time	10000.000000	[s] Scheduled observation exposure time
ascdsver	8.4.5	Processing system revision	ontime	10143.999962211	Sum of GTIs [s]
caldbver	4.5.2	 	ontime2	10143.999962211	Sum of GTIs [s]
date	2012-11-13T20:14:49	Date and time of file creation	ontime3	10143.999962211	Sum of GTIs [s]
revision	3	Processing version of data	ontime5	10143.999962211	Sum of GTIs [s]
			ontime6	10143.999962211	Sum of GTIs [s]
			ontime7	10143.999962211	Sum of GTIs [s]
			ontime8	10143.999962211	Sum of GTIs [s]
			l1events	395210	Number of level 1 events

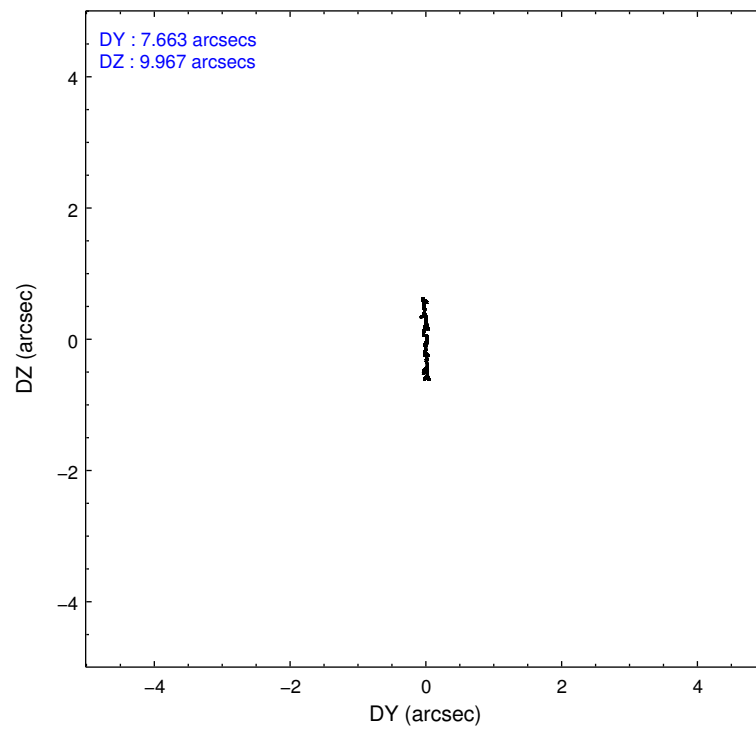
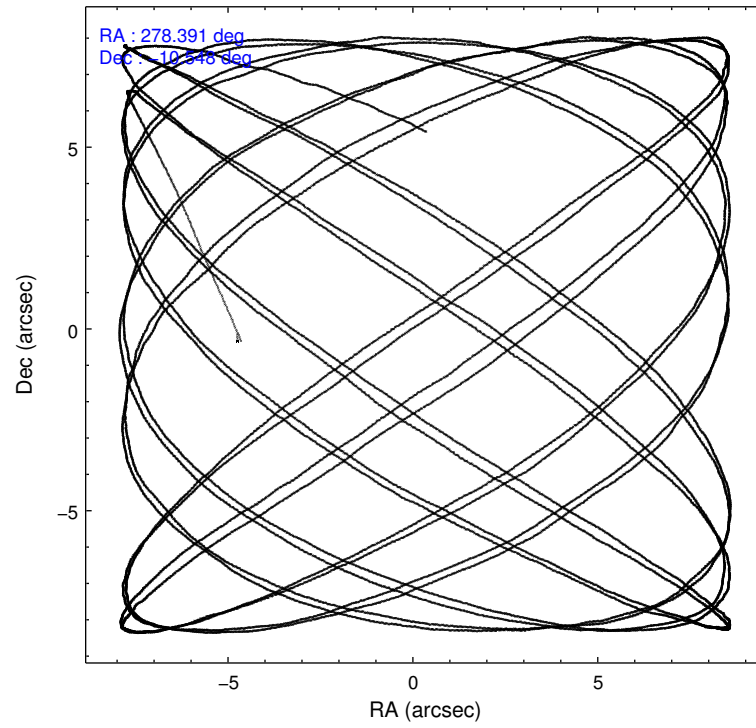
2.1.4 Events

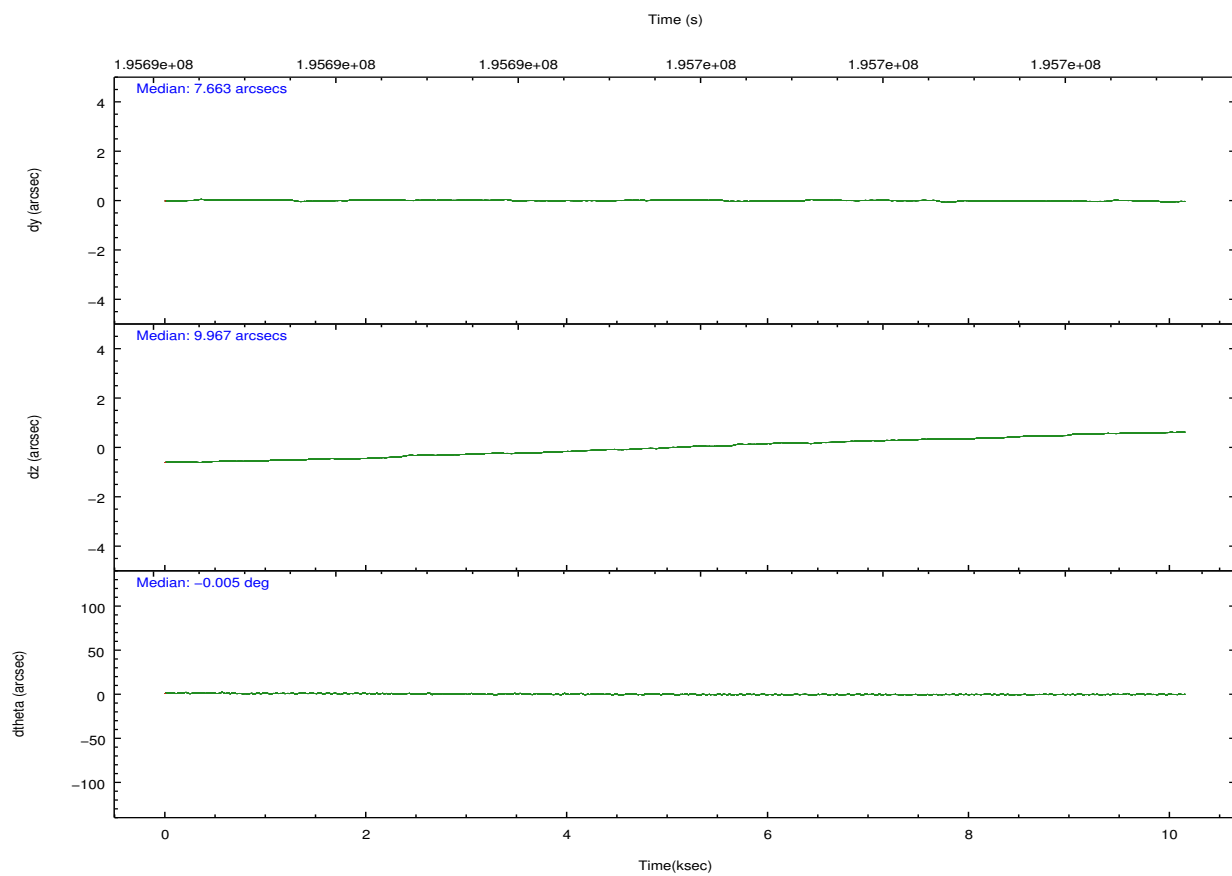
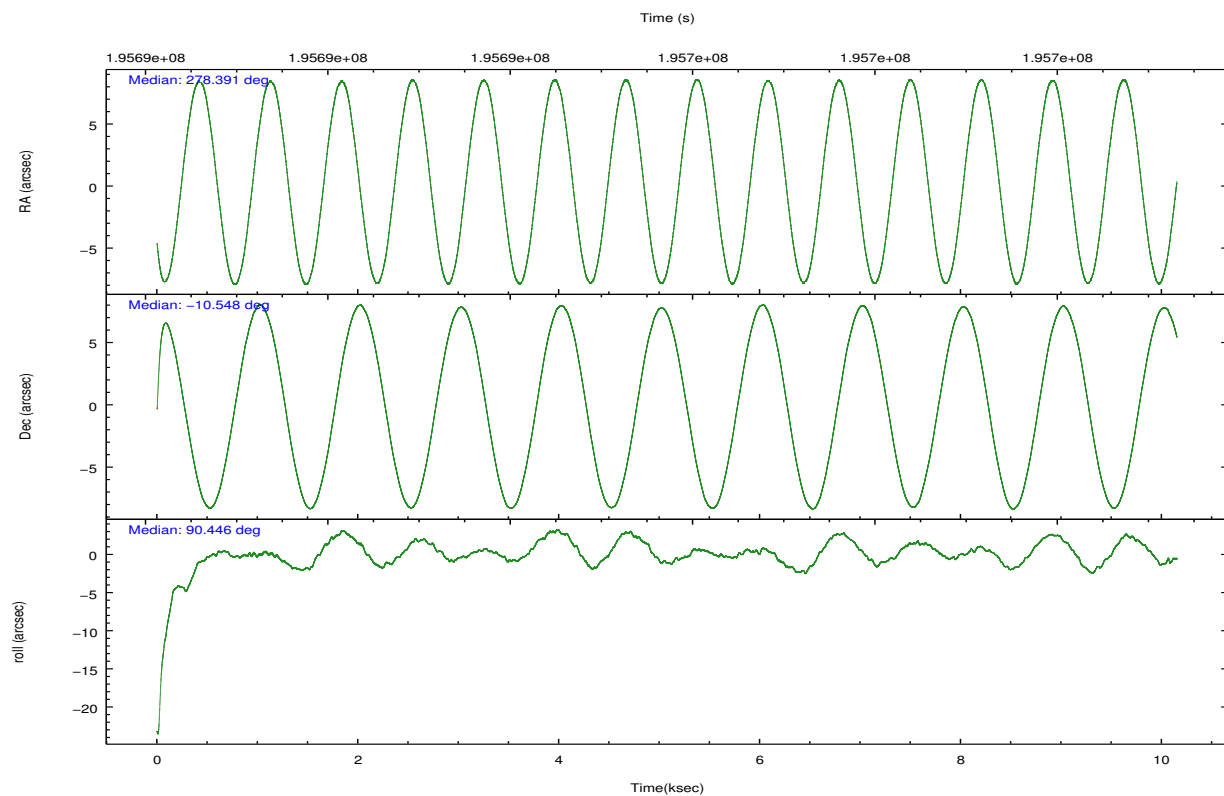
	ccd 2	ccd 3	ccd 5	ccd 6	ccd 7	ccd 8		ccd 2	ccd 3	ccd 5	ccd 6	ccd 7	ccd 8
level 1 events	59594	53623	69130	56174	91790	64899	grade 0 events	2315	2286	4921	3452	11060	4673
rejected events	53917	48094	32680	48892	28640	50023		3%	4%	7%	6%	12%	7%
rejected %	90%	89%	47%	87%	31%	77%	grade 1 events	27	36	71	27	113	49
								0%	0%	0%	0%	0%	0%
							grade 2 events	1302	1141	10723	1359	15170	3528
								2%	2%	15%	2%	16%	5%
							grade 3 events	594	655	1756	666	7016	1697
								0%	1%	2%	1%	7%	2%
							grade 4 events	615	614	1787	727	6990	1554
								1%	1%	2%	1%	7%	2%
							grade 5 events	1631	1843	5678	1900	6128	2730
								2%	3%	8%	3%	6%	4%
							grade 6 events	989	953	18117	1228	24148	3889
								1%	1%	26%	2%	26%	5%
							grade 7 events	52121	46095	26077	46815	21165	46779
								87%	85%	37%	83%	23%	72%

2.2 Compared Parameters

Parameter	Planned	Actual	Parameter	Planned	Actual
Instrument	ACIS	ACIS	Obspar format version number	7	7
Detector	ACIS-235678	ACIS-235678	Obspar file type	PREDICTED	ACTUAL
Grating	NONE	NONE	Obspar update status	NONE	UPDATED
Data mode	VFAINT	VFAINT	Number of optional ACIS chips dropped	0	0
Observation mode	POINTING	POINTING	On-chip summing requested	N	N
[deg] Pointing RA	278.405534	278.3911316061685	Subarray requested	NONE	NONE
[deg] Pointing Dec	-10.571118	-10.54779455086335	Alternating exposures requested	N	N
[deg] Pointing Roll	90.289948	90.44392379809268	[s] Primary exposure time	0.000000	3.2
[s] Window start time (MET)	194486464.184000	194486464.184000			
[s] Window stop time (MET)	197078464.184000	197078464.184000			
[mm] SIM focus pos	-0.684267	-0.6828225247311905			
[mm] SIM defocus	0	0.001444936568705701			
[mm] SIM translation stage pos	-190.132523	-190.1400660498719			
[mm] SIM translation stage offset	0	0.00754346686406393			
[s] Observation start time (MET)	195690794.184000	195689624.92709			
Observation start date	2004-03-14T22:32:10	2004-03-14T22:13:44			
[s] Observation end time (MET)	195700794.184000	195702165.29014			
Observation end date	2004-03-15T01:18:50	2004-03-15T01:42:45			
Read mode	TIMED	TIMED			

2.3 Aspect



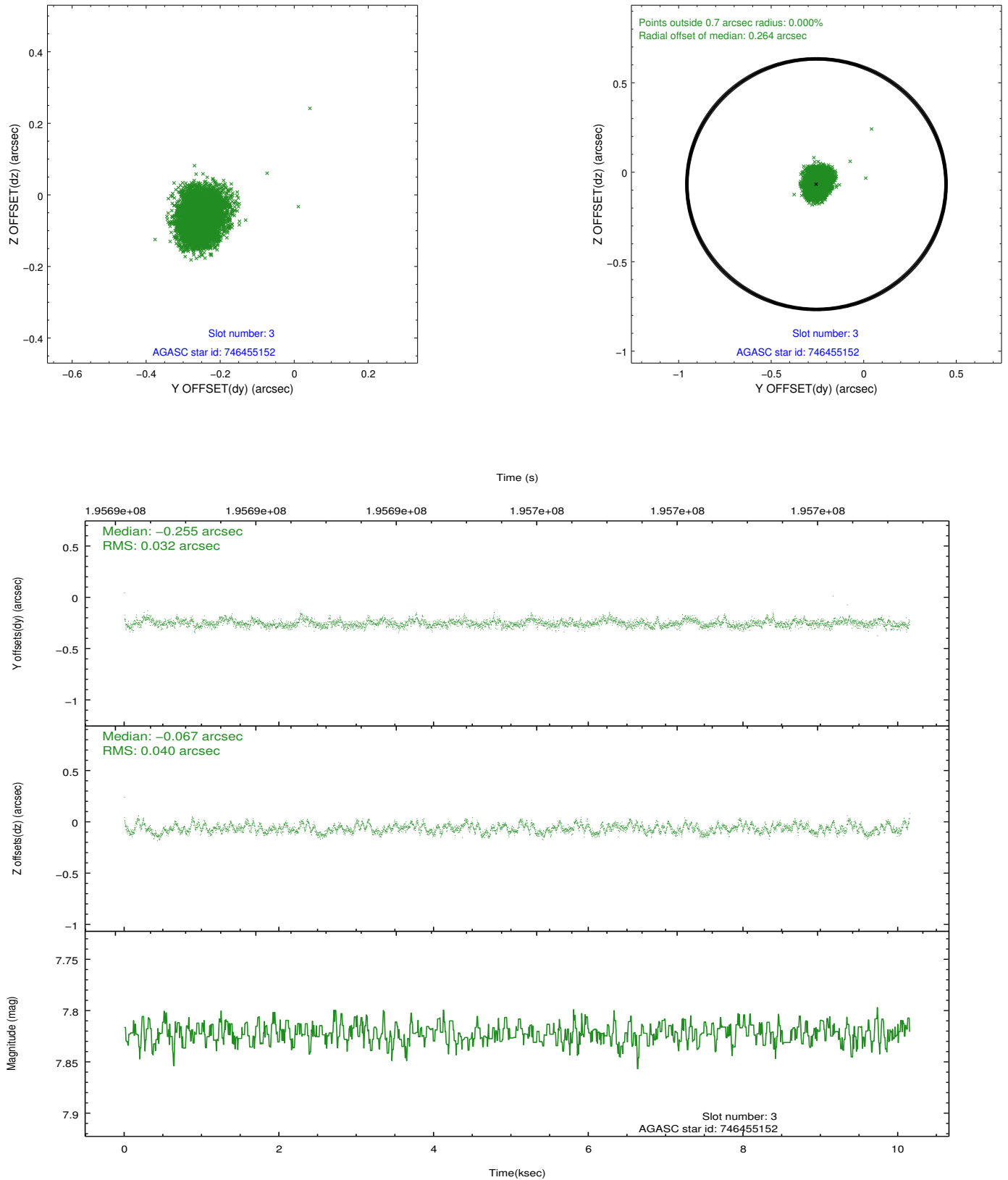


Slot Statistics

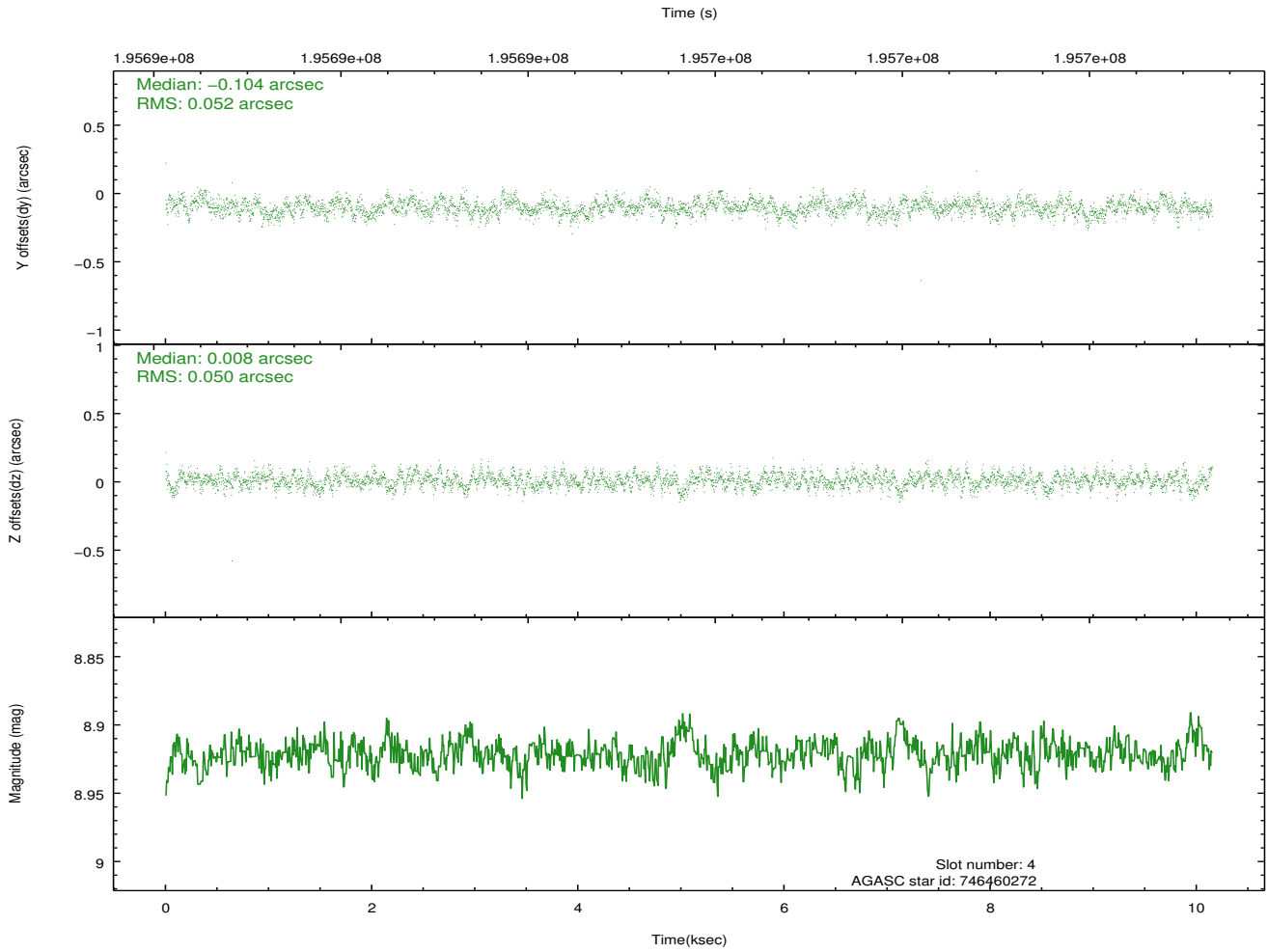
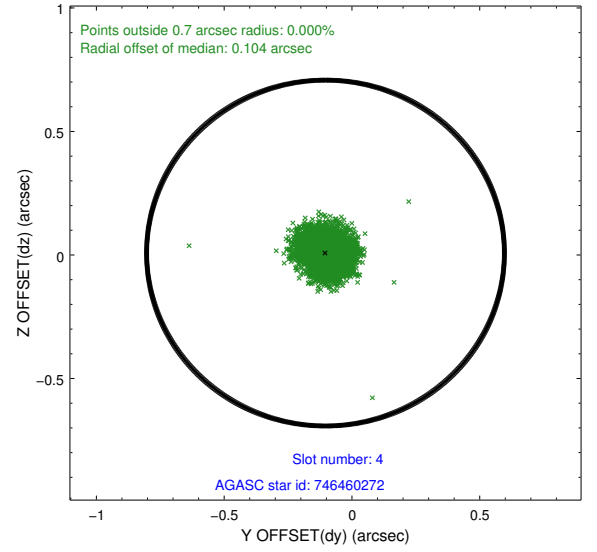
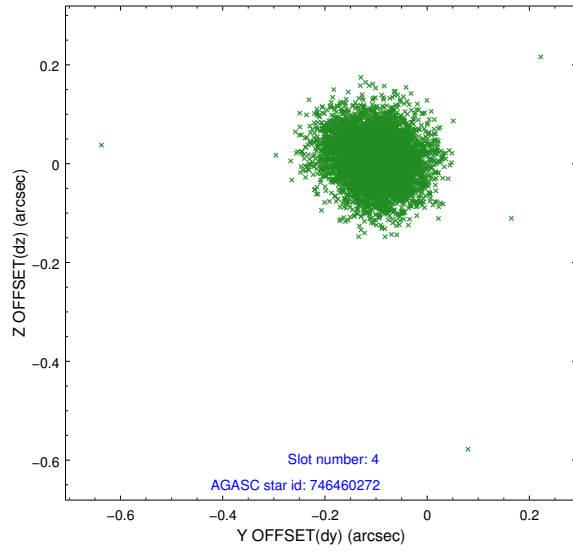
slot	status	id	mag	n_pts	med_dy	med_dz	dr1	dr2	ra	dec	mean_y	mean_z
0	FID	ACIS-S-2	7.10	2476	-0.038	-0.021	0.011	0.017	0.000000	0.000000	-760.43	-1731.24
1	FID	ACIS-S-4	7.20	2477	0.079	0.024	0.006	0.011	0.000000	0.000000	2152.69	176.81
2	FID	ACIS-S-5	7.23	2476	-0.073	0.006	0.010	0.017	0.000000	0.000000	-1812.68	170.97
3	GUIDE	746455152	7.82	4952	-0.255	-0.067	0.055	0.087	278.447893	-9.976732	2139.18	-161.09
4	GUIDE	746460272	8.92	4948	-0.104	0.008	0.077	0.122	278.847488	-10.152127	1500.09	-1573.78
5	GUIDE	746462392	8.54	4953	0.188	0.167	0.064	0.105	279.038421	-10.890715	-1164.14	-2232.11
6	GUIDE	746462456	8.38	4953	0.207	-0.091	0.052	0.083	278.652171	-10.530173	142.47	-874.27
7	GUIDE	746460328	9.82	4942	-0.037	-0.013	0.123	0.195	278.603974	-9.898096	2419.16	-716.20

2.4 Star Slots

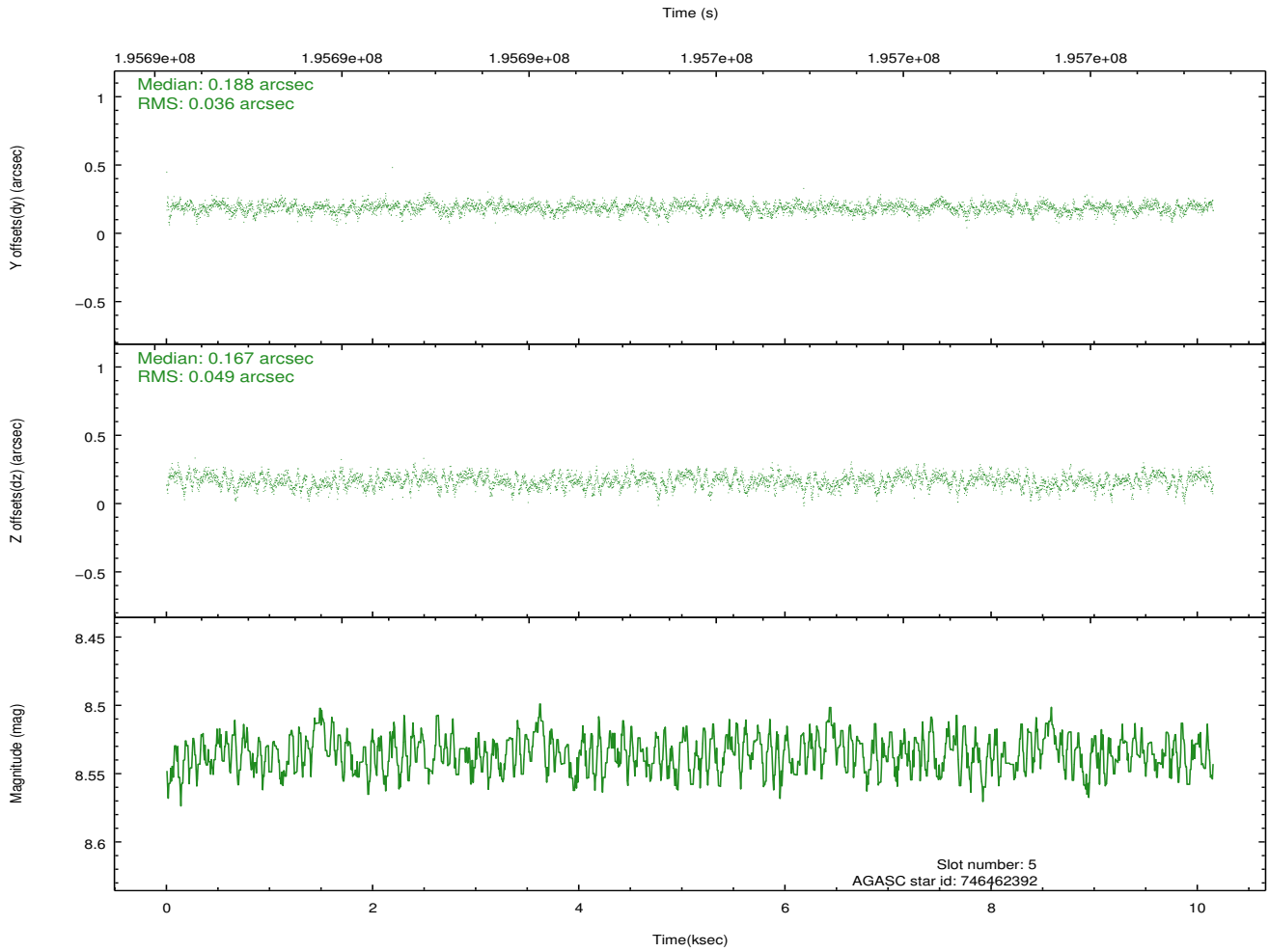
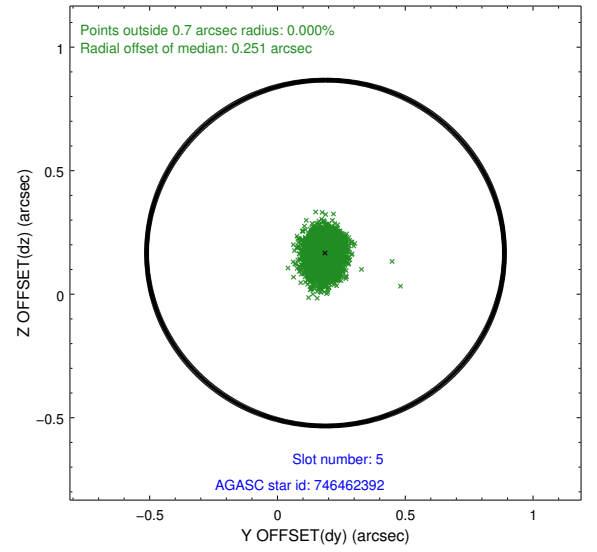
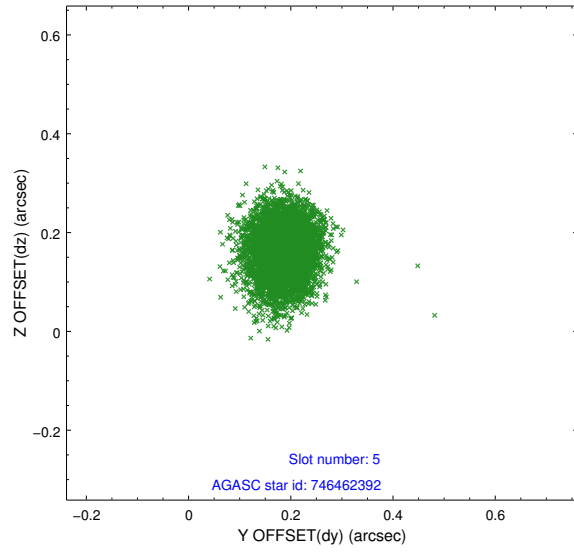
2.4.1 Slot 3



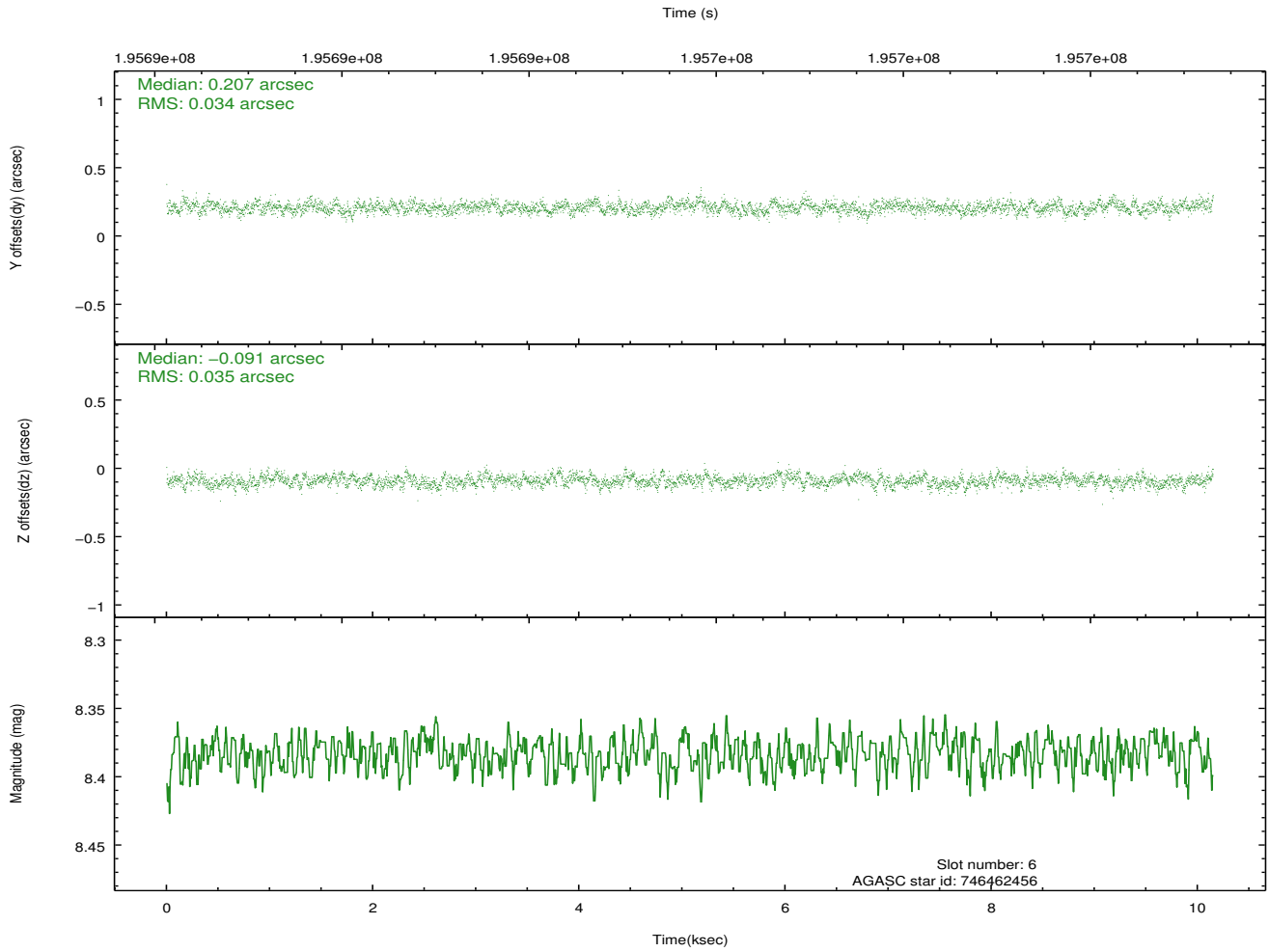
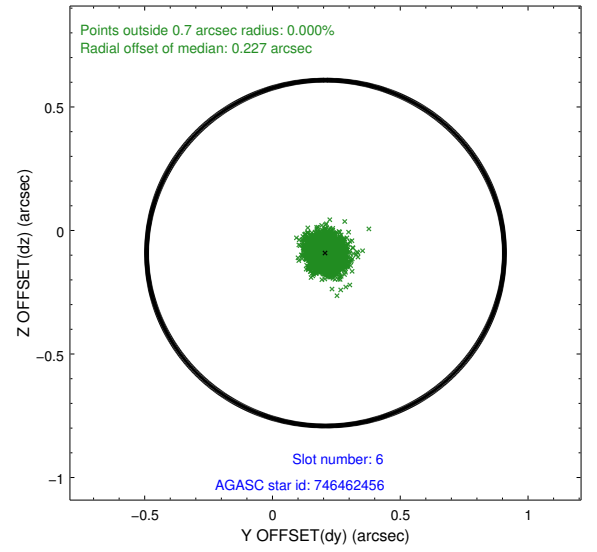
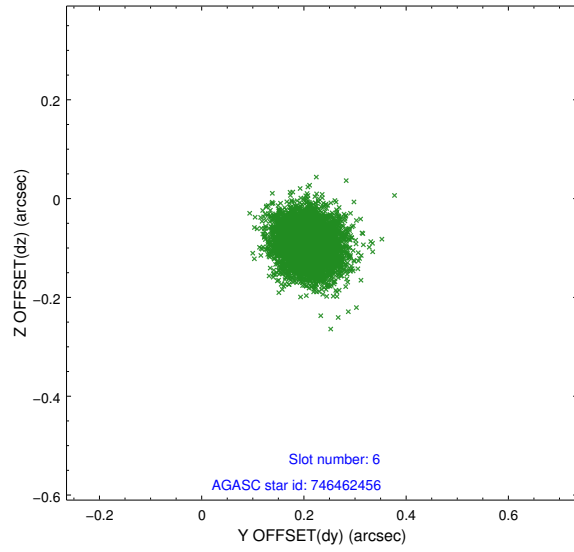
2.4.2 Slot 4



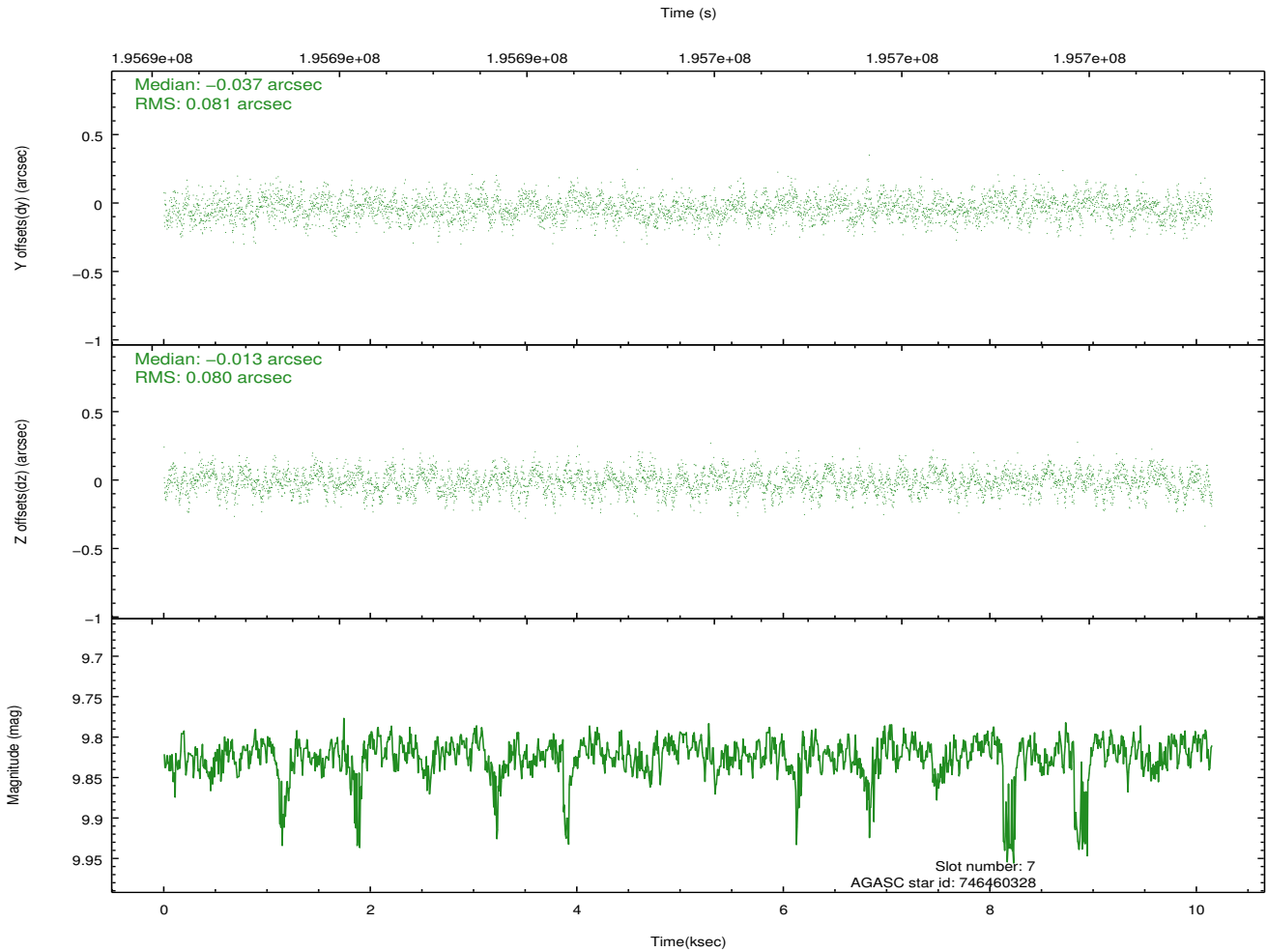
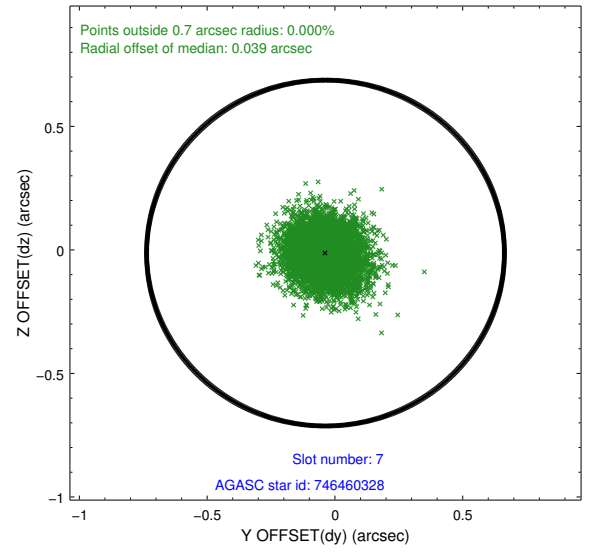
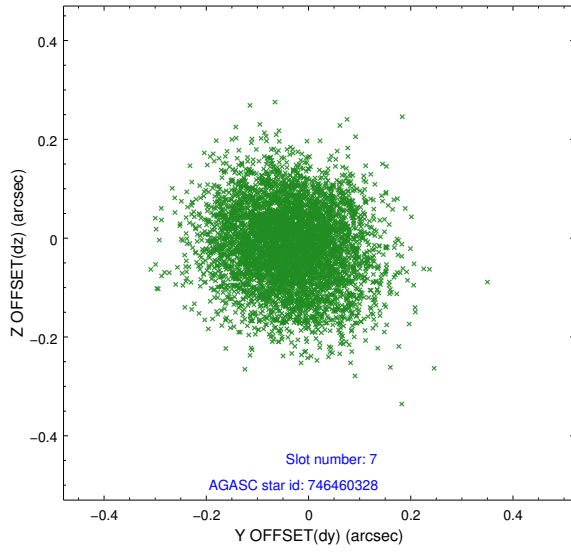
2.4.3 Slot 5



2.4.4 Slot 6

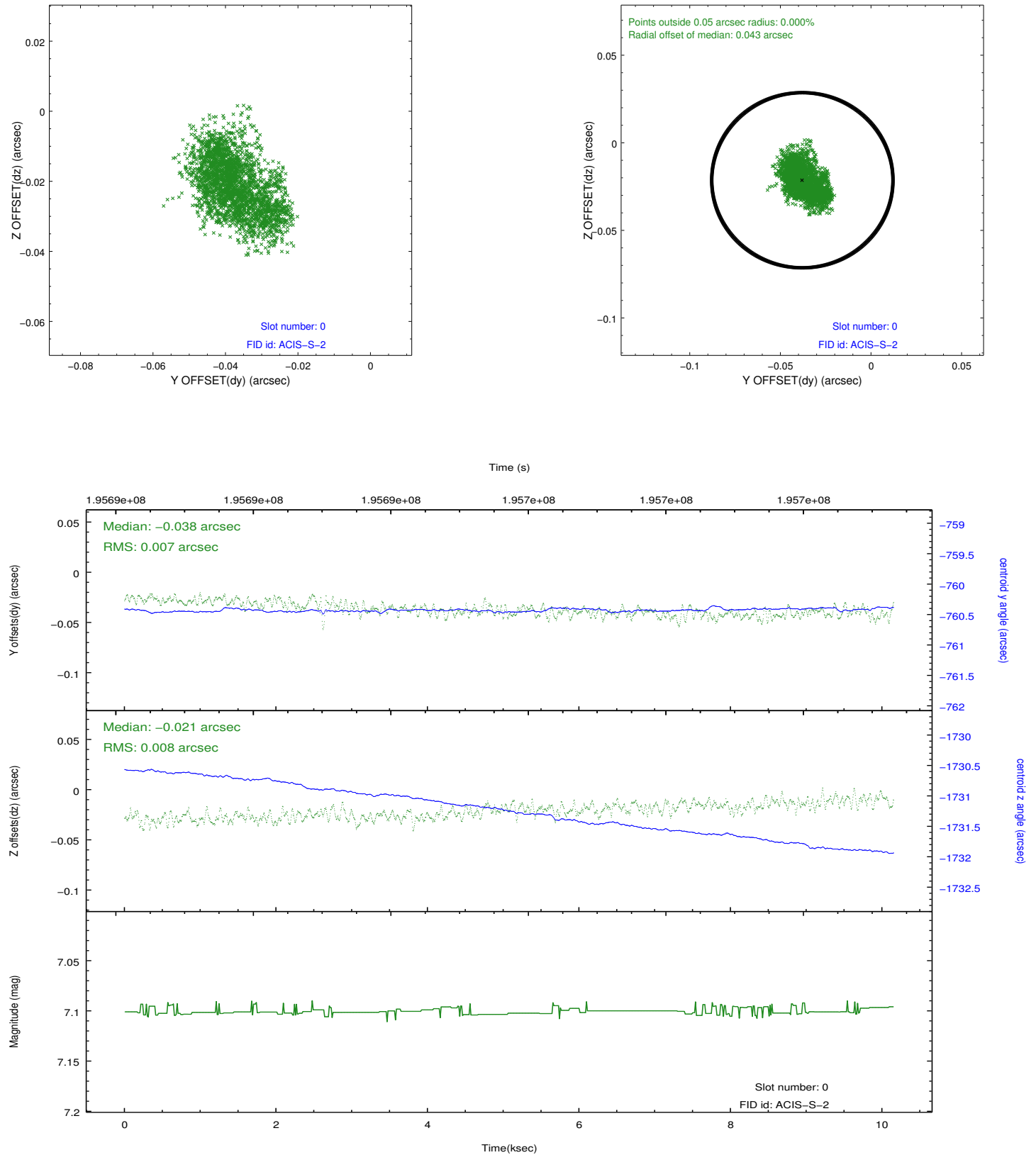


2.4.5 Slot 7

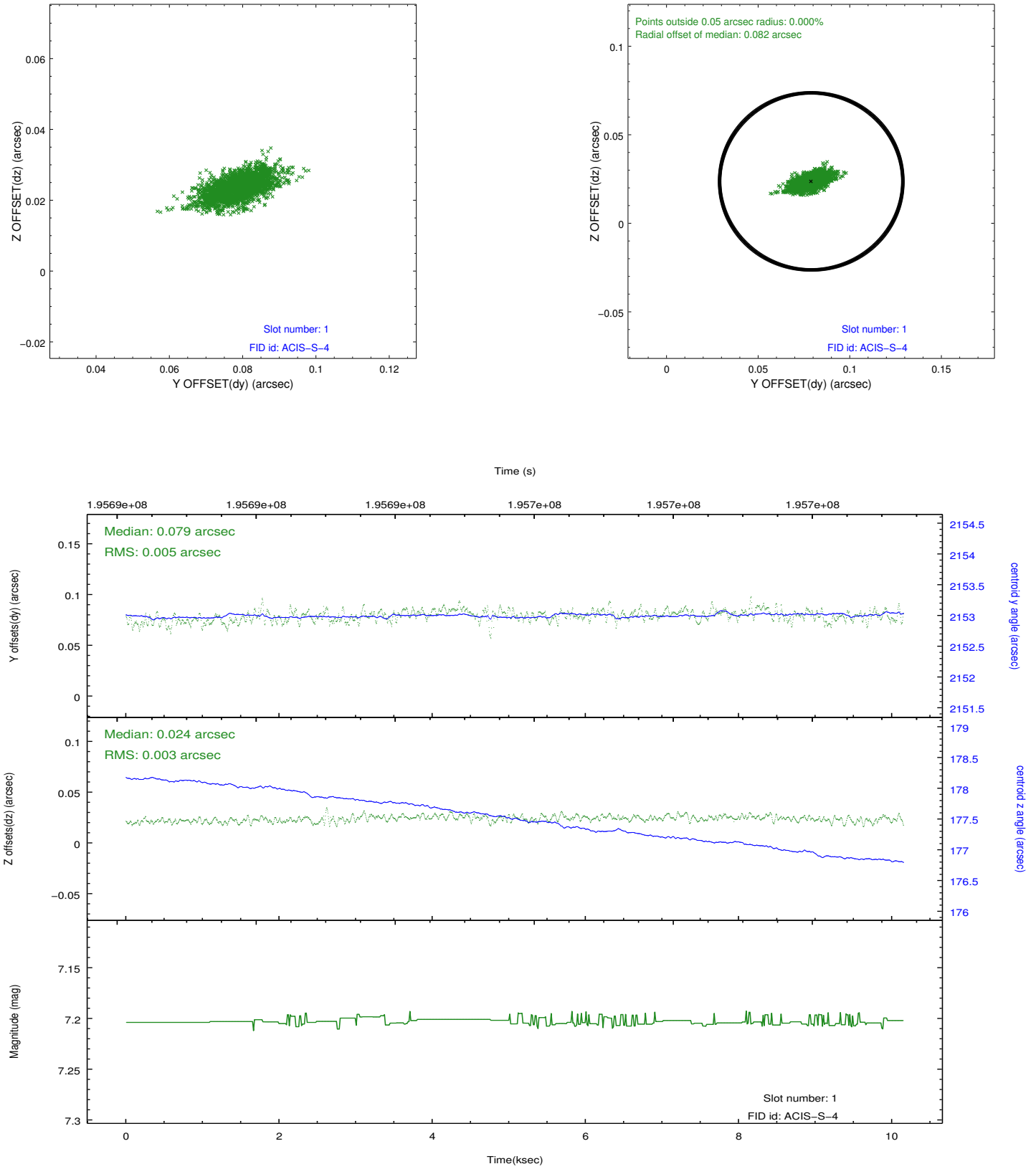


2.5 FID Slots

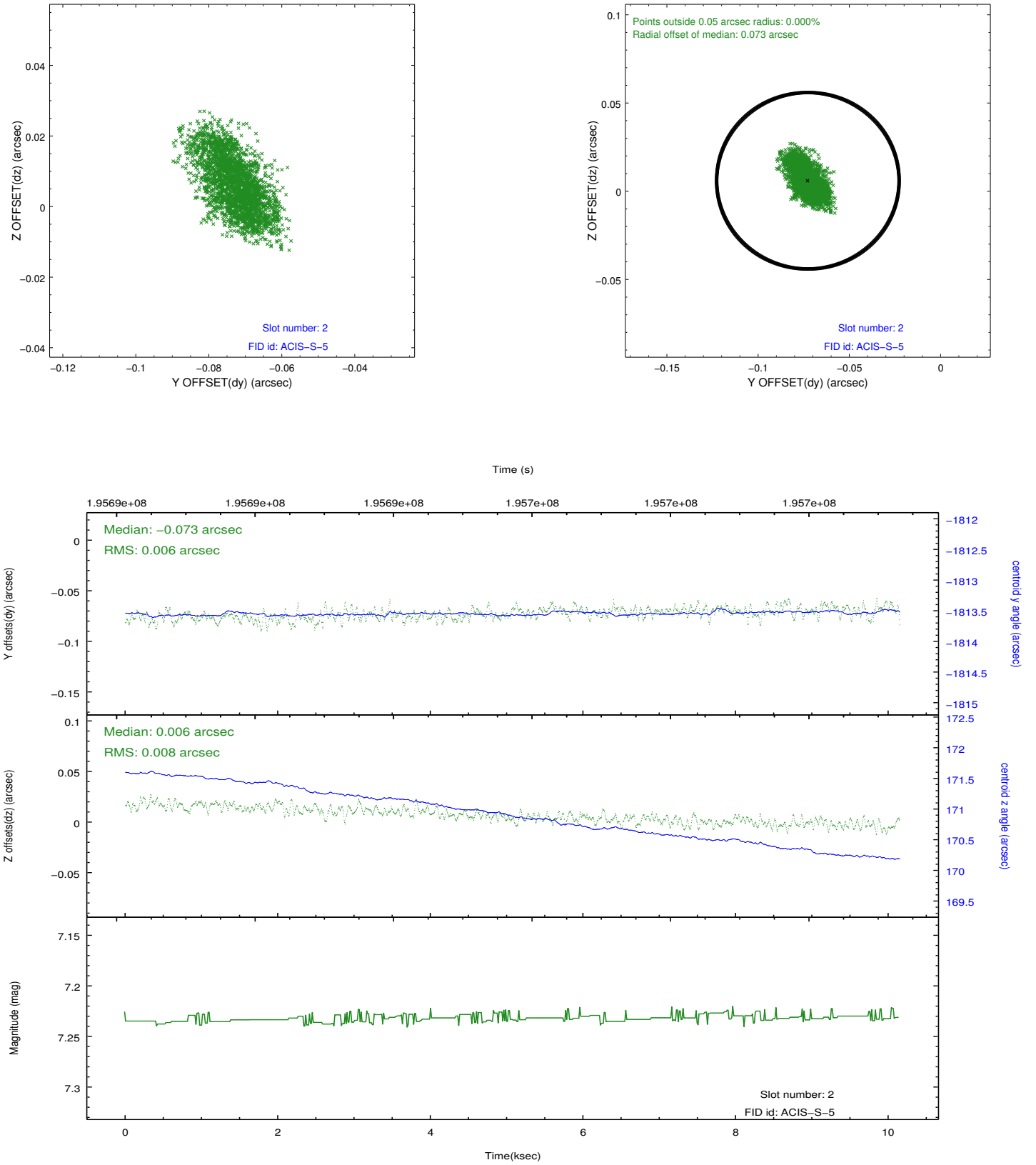
2.5.1 Slot 0



2.5.2 Slot 1



2.5.3 Slot 2



A Summary

A.1 Status

V&V Scientist	Beth Sundheim
V&V Date (YYYY-MM-DD)	2012.12.04
V&V Edition	1
V&V Disposition and Status	OK
V&V Charge Time	10.143

A.2 Comments

Window preference met.