

V&V Reference Report

L2 ASCDS Version : 8.4.5

Observation 5165 - L2 Version 5
Chandra X-Ray Center

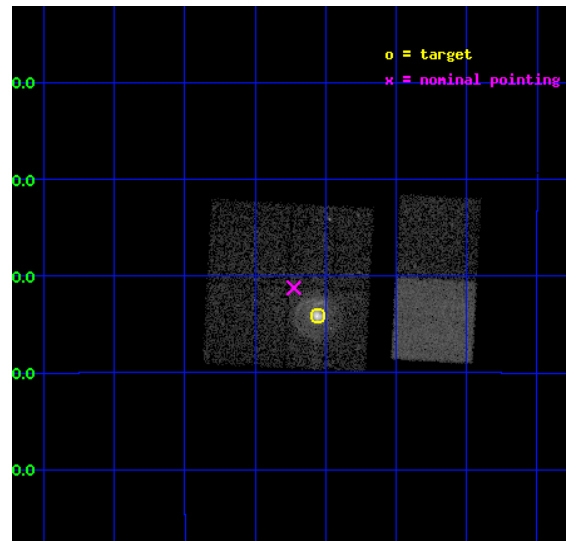
L2 Processing Date : Nov 14 2012

Contents

1	Front	2
2	OBI	3
2.1	OBI	3
2.1.1	Images	3
2.1.2	Bias	3
2.1.3	Parameters	4
2.1.4	Events	4
2.2	Compared Parameters	5
2.3	Aspect	6
2.4	Star Slots	9
2.4.1	Slot 3	9
2.4.2	Slot 4	10
2.4.3	Slot 5	11
2.4.4	Slot 6	12
2.4.5	Slot 7	13
2.5	FID Slots	14
2.5.1	Slot 0	14
2.5.2	Slot 1	15
2.5.3	Slot 2	16
A	Summary	17
A.1	Status	17
A.2	Comments	17

1 Front

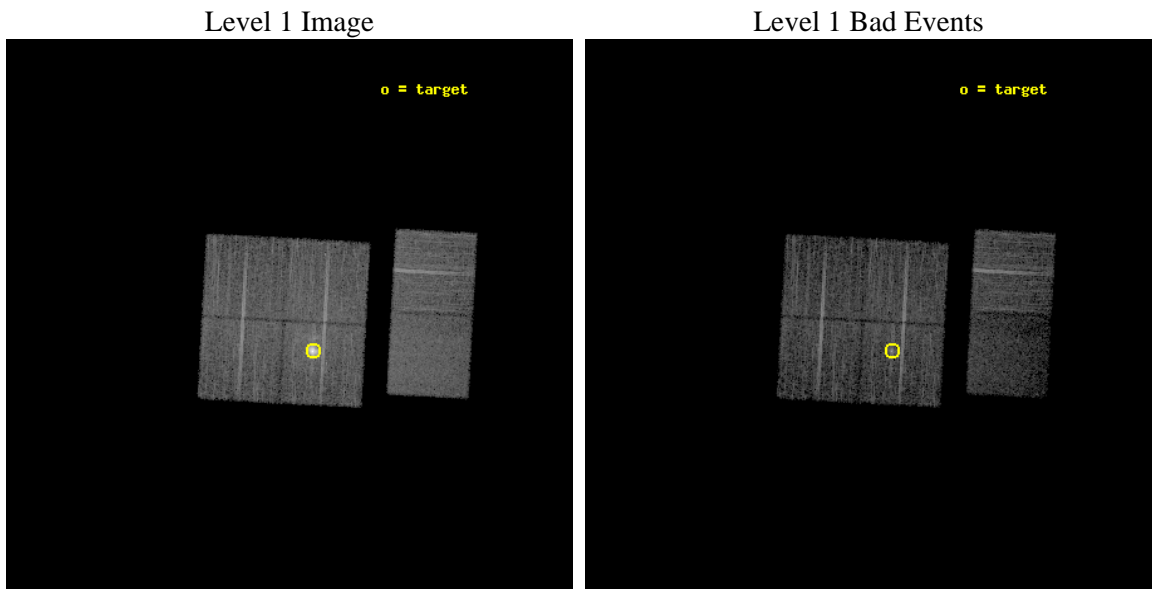
seq_num	590363	Sequence number
obs_id	5165	Observation id
title	AO5A Observations of the Standard Candles Cas A and G21.5-09	Propo
observer	Dr. CXC Calibration	Principal investigator
object	G21.5-09[I3,-120,-2.5,2.5,0]	Source name
dtcycle	0	
cycle	P	events from which exps? Prim/Second/Both
ra_targ	278.389583	Observer's specified target RA [deg]
dec_targ	-10.568528	Observer's specified target Dec [deg]
ra_nom	278.43137165053	Nominal RA [deg]
dec_nom	-10.520439538176	Nominal Dec [deg]
roll_nom	93.094416298307	Nominal Roll [deg]
revision	5	Processing version of data
ontime	9676.7999639511	Sum of GTIs [s]
livetime	9554.2664961382	Livetime [s]
ontime0	9676.7999639511	Sum of GTIs [s]
ontime1	9676.7999639511	Sum of GTIs [s]
ontime2	9676.7999639511	Sum of GTIs [s]
ontime3	9676.7999639511	Sum of GTIs [s]
ontime6	9676.7999639511	Sum of GTIs [s]
ontime7	9676.7999639511	Sum of GTIs [s]
l2events	74663	Number of level 2 events



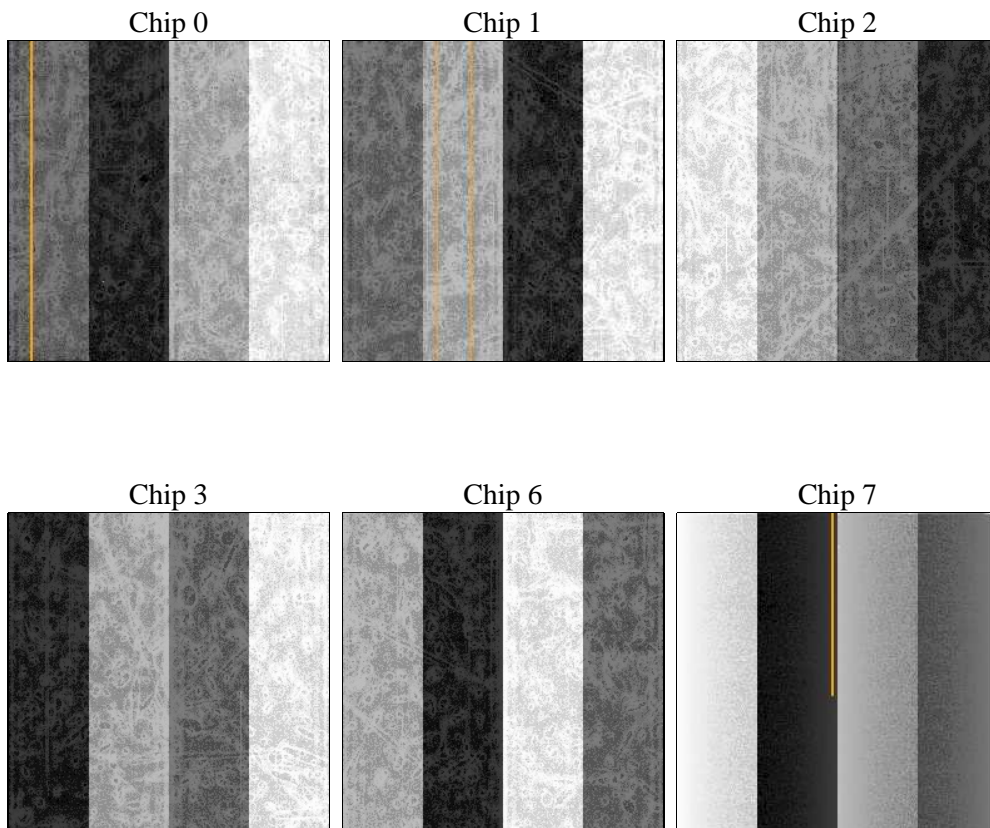
2 OBI

2.1 OBI

2.1.1 Images



2.1.2 Bias



2.1.3 Parameters

obi_num	1	Obi number	sched_exp_time	9540.231000	[s] Scheduled observation exposure time
ascdsver	8.4.5	Processing system revision	ontime	9676.7999639511	Sum of GTIs [s]
caldsver	4.5.2	 	ontime0	9676.7999639511	Sum of GTIs [s]
date	2012-11-14T10:54:05	Date and time of file creation	ontime1	9676.7999639511	Sum of GTIs [s]
revision	5	Processing version of data	ontime2	9676.7999639511	Sum of GTIs [s]
			ontime3	9676.7999639511	Sum of GTIs [s]
			ontime6	9676.7999639511	Sum of GTIs [s]
			ontime7	9676.7999639511	Sum of GTIs [s]
			l1events	341584	Number of level 1 events

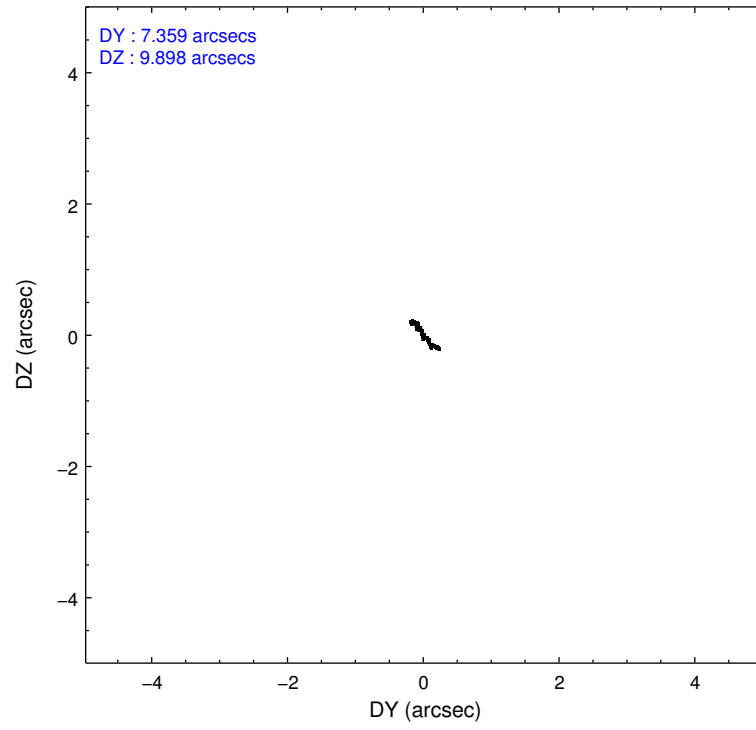
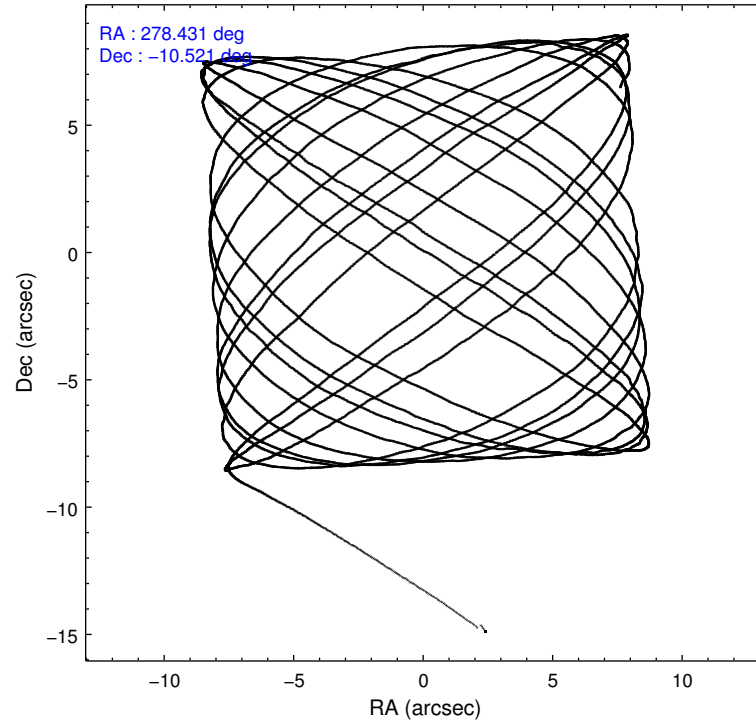
2.1.4 Events

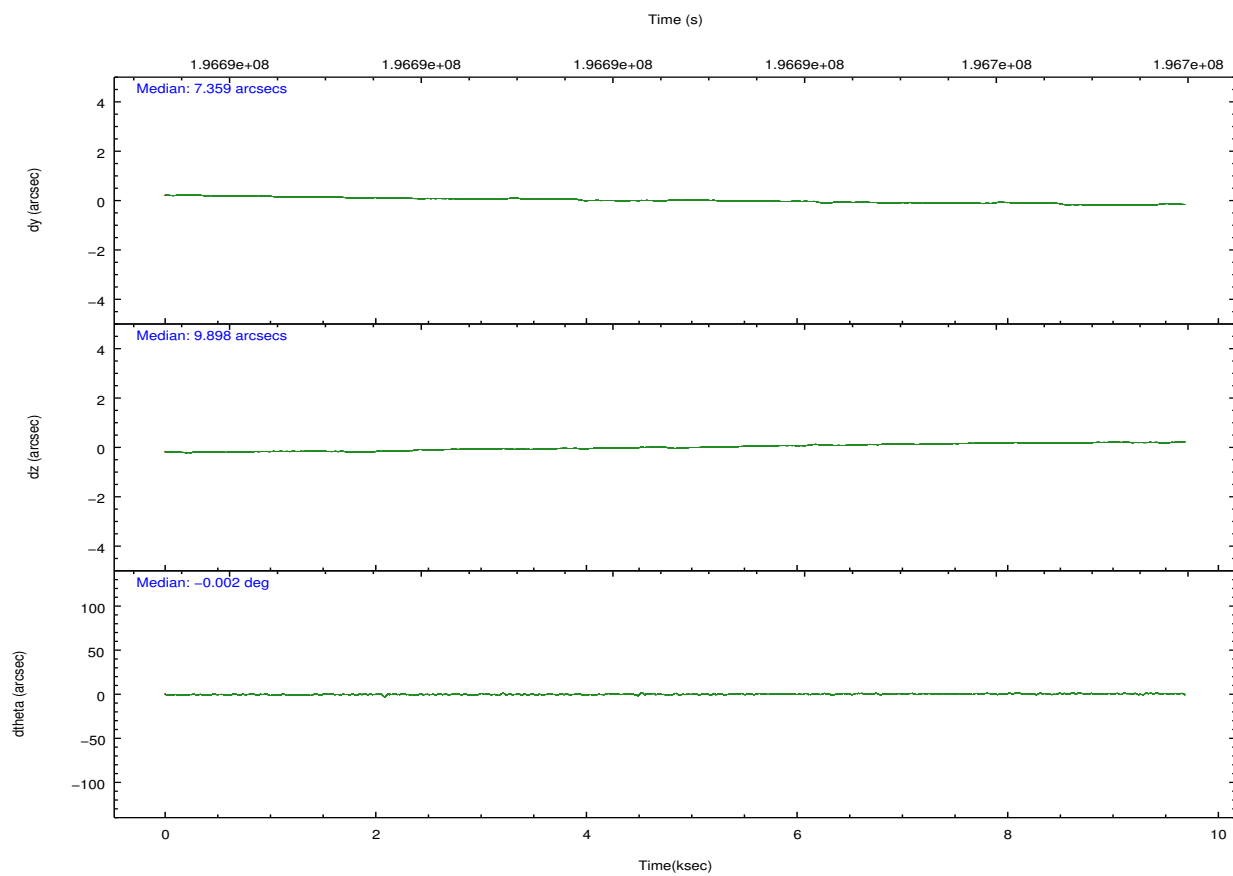
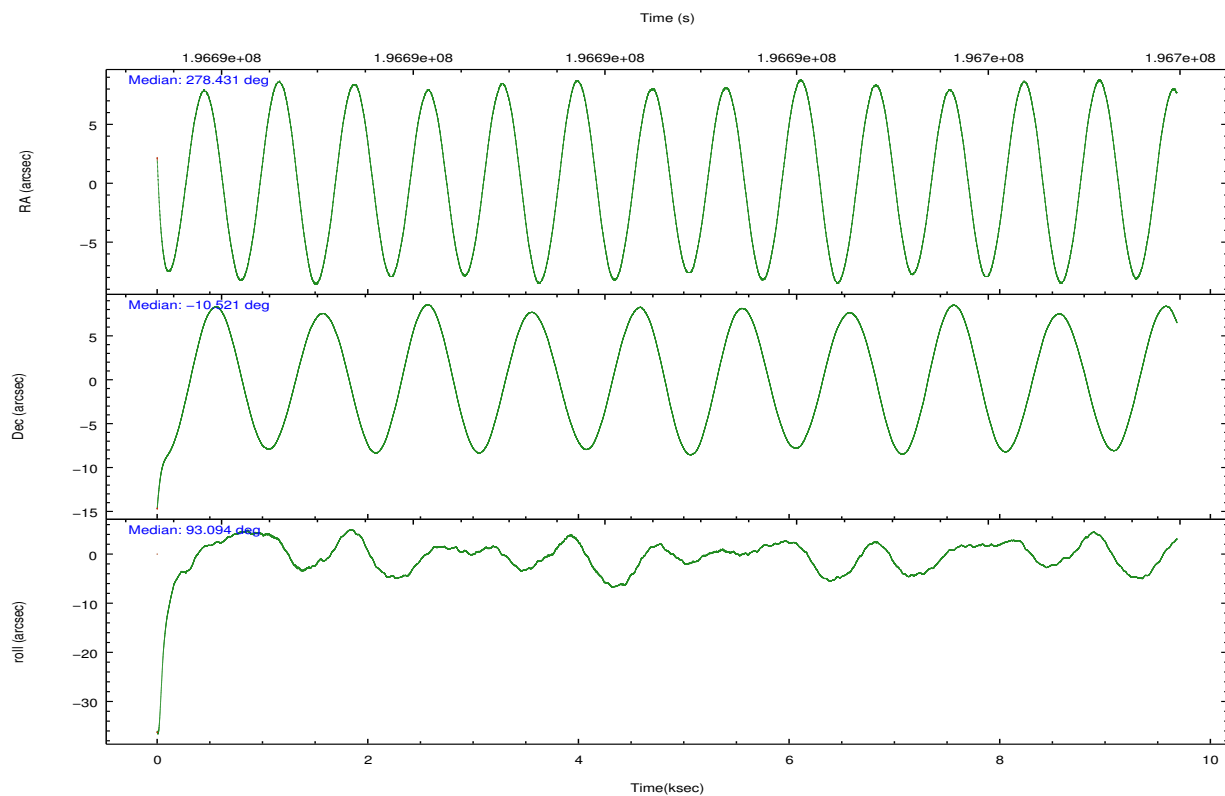
	ccd 0	ccd 1	ccd 2	ccd 3	ccd 6	ccd 7		ccd 0	ccd 1	ccd 2	ccd 3	ccd 6	ccd 7
level 1 events	48381	49595	55964	82078	55252	50314	grade 0 events	2110	2335	2800	24212	2195	2432
rejected events	42947	43669	49765	47578	49668	26266		4%	4%	5%	29%	3%	4%
rejected %	88%	88%	88%	57%	89%	52%	grade 1 events	20	21	36	258	19	50
								0%	0%	0%	0%	0%	0%
							grade 2 events	1228	1255	1301	4825	1226	5121
								2%	2%	2%	5%	2%	10%
							grade 3 events	639	725	625	1925	618	2501
								1%	1%	1%	2%	1%	4%
							grade 4 events	557	668	635	1817	599	2382
								1%	1%	1%	2%	1%	4%
							grade 5 events	1569	1660	1466	1945	1792	5585
								3%	3%	2%	2%	3%	11%
							grade 6 events	1004	1093	933	2343	1067	12104
								2%	2%	1%	2%	1%	24%
							grade 7 events	41254	41838	48168	44753	47736	20139
								85%	84%	86%	54%	86%	40%

2.2 Compared Parameters

Parameter	Planned	Actual	Parameter	Planned	Actual
Instrument	ACIS	ACIS	Obspar format version number	7	7
Detector	ACIS-012367	ACIS-012367	Obspar file type	PREDICTED	ACTUAL
Grating	NONE	NONE	Obspar update status	NONE	UPDATED
Data mode	VFAINT	VFAINT	Number of optional ACIS chips dropped	0	0
Observation mode	POINTING	POINTING	On-chip summing requested	N	N
[deg] Pointing RA	278.446683	278.4313716505279	Subarray requested	NONE	NONE
[deg] Pointing Dec	-10.543341	-10.52043953817643	Alternating exposures requested	N	N
[deg] Pointing Roll	92.888568	93.09441629830667	[s] Primary exposure time	0.000000	3.2
[s] Window start time (MET)	194486464.184000	194486464.184000			
[s] Window stop time (MET)	197078464.184000	197078464.184000			
[mm] SIM focus pos	-0.782348	-0.7809083437167272			
[mm] SIM defocus	0	0.001439871863259334			
[mm] SIM translation stage pos	-233.592463	-233.5874344608287			
[mm] SIM translation stage offset	0	-0.005018542100998502			
[s] Observation start time (MET)	196687951.184000	196686809.54588			
Observation start date	2004-03-26T11:31:27	2004-03-26T11:13:29			
[s] Observation end time (MET)	196697491.184000	196697805.74636			
Observation end date	2004-03-26T14:10:27	2004-03-26T14:16:45			
Read mode	TIMED	TIMED			

2.3 Aspect



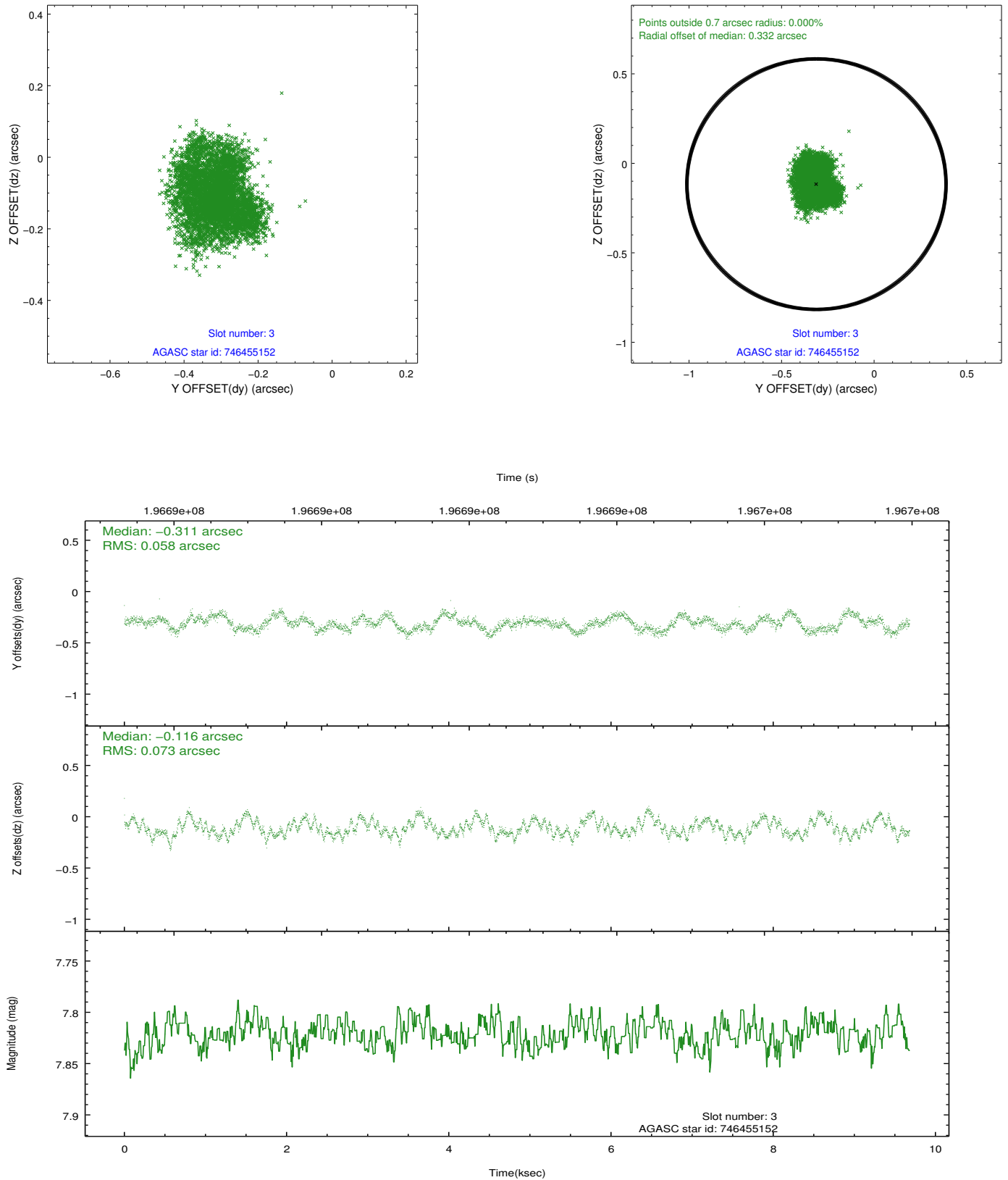


Slot Statistics

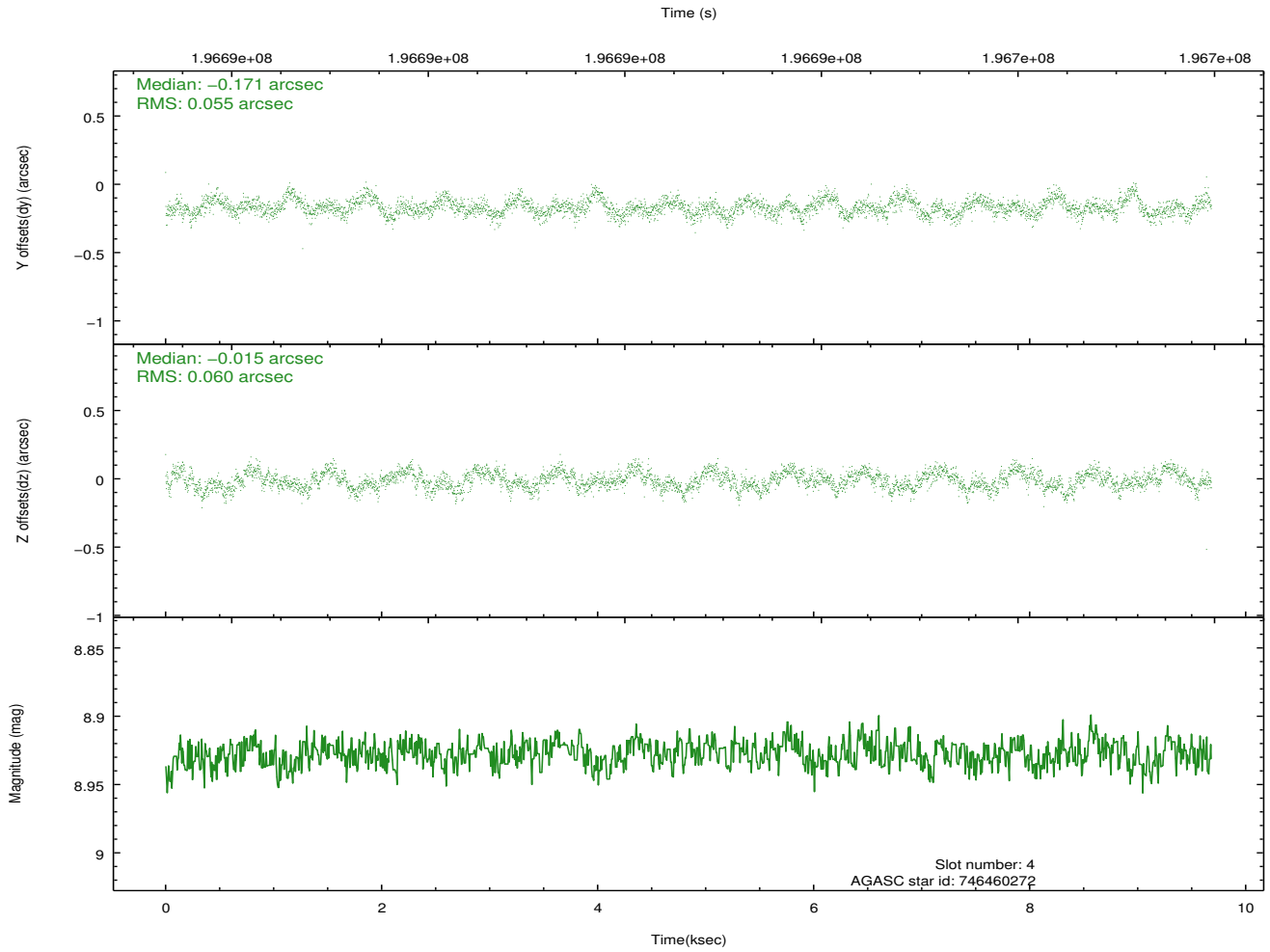
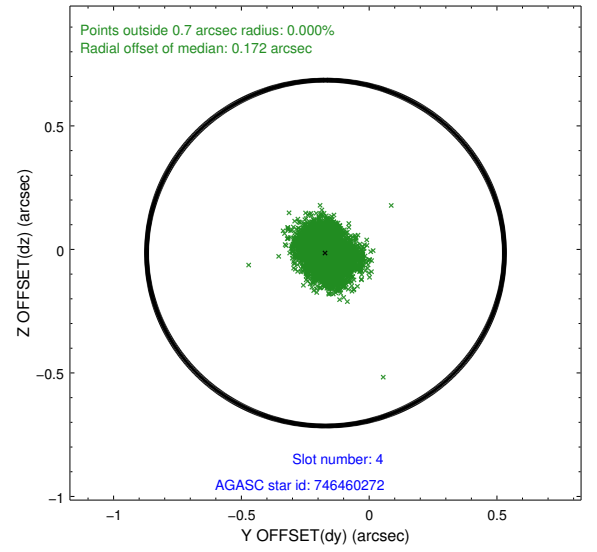
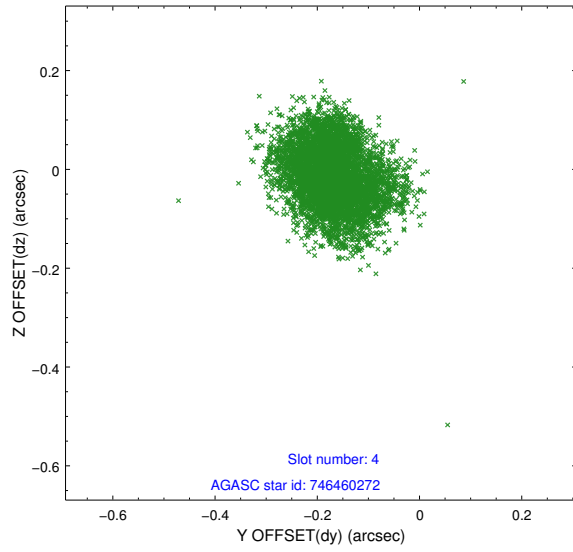
slot	status	id	mag	n_pts	med_dy	med_dz	dr1	dr2	ra	dec	mean_y	mean_z
0	FID	ACIS-I-1	7.24	2362	0.003	0.020	0.007	0.013	0.000000	0.000000	932.31	-833.35
1	FID	ACIS-I-5	7.23	2362	-0.155	0.025	0.007	0.012	0.000000	0.000000	-1815.65	1063.87
2	FID	ACIS-I-6	7.25	2362	0.061	0.025	0.009	0.013	0.000000	0.000000	397.31	1708.99
3	GUIDE	746455152	7.82	4723	-0.311	-0.116	0.103	0.154	278.447893	-9.976732	2037.14	-107.07
4	GUIDE	746460272	8.93	4721	-0.171	-0.015	0.088	0.136	278.847488	-10.152127	1334.86	-1489.38
5	GUIDE	746460328	9.81	4723	-0.045	-0.114	0.171	0.277	278.603974	-9.898096	2292.07	-674.46
6	GUIDE	746461728	9.82	4722	0.463	0.114	0.337	0.473	278.986921	-10.530755	-51.34	-1911.78
7	GUIDE	746462392	8.53	4722	0.081	0.127	0.117	0.172	279.038421	-10.890715	-1356.72	-2026.82

2.4 Star Slots

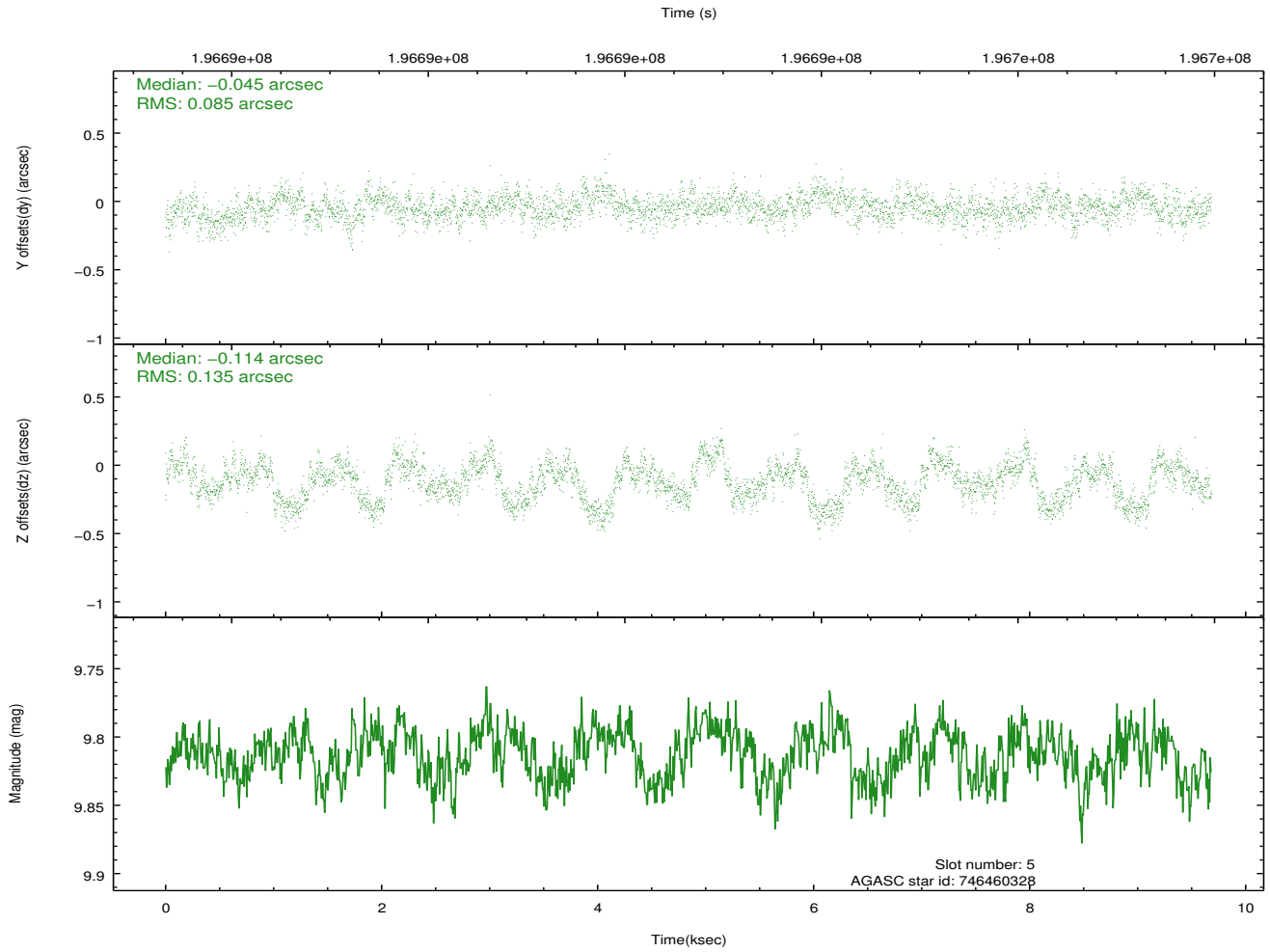
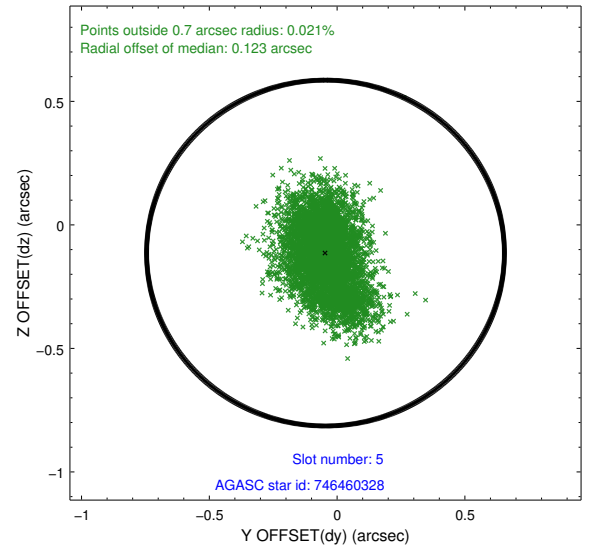
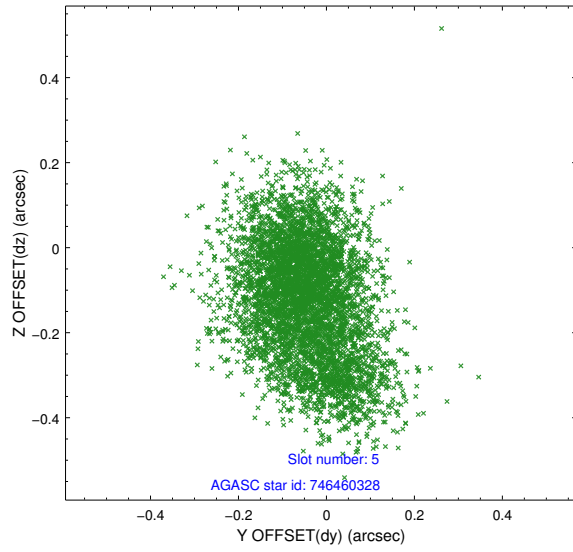
2.4.1 Slot 3



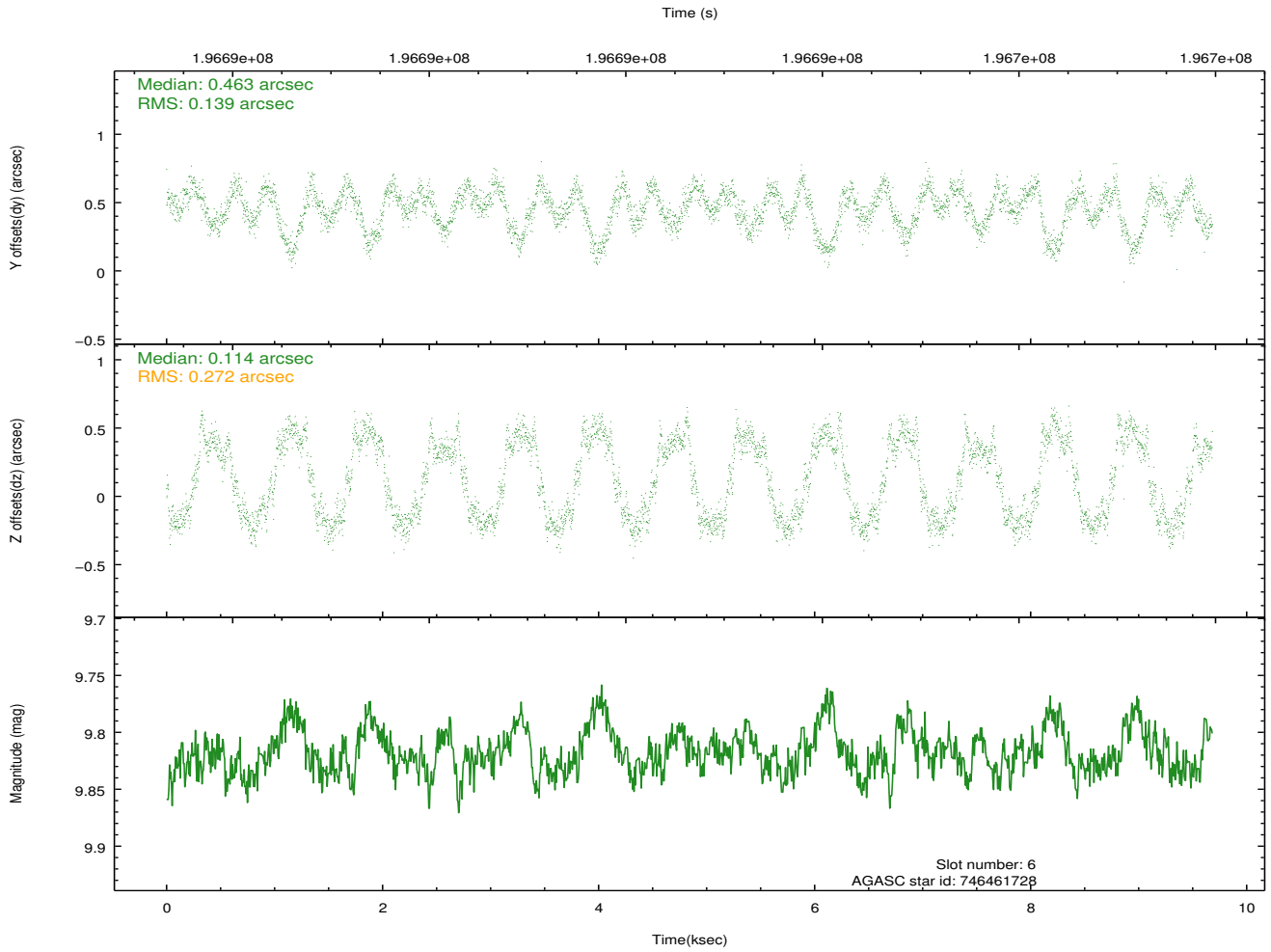
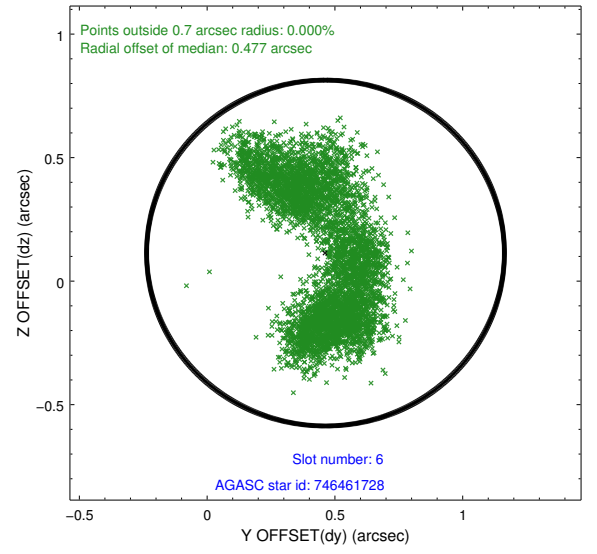
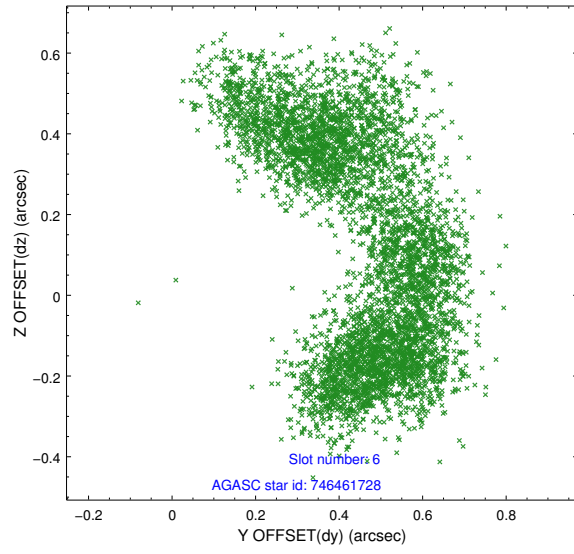
2.4.2 Slot 4



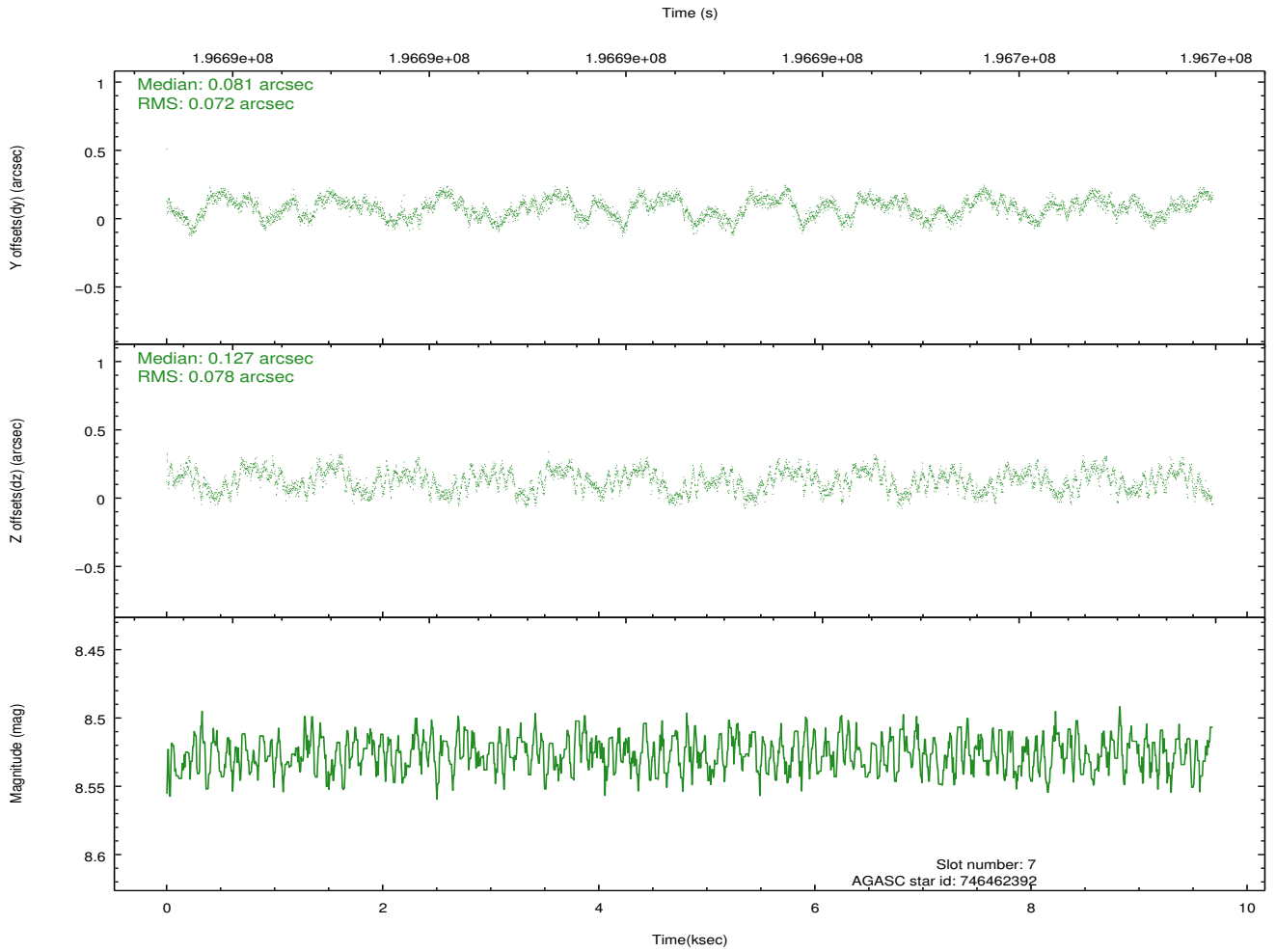
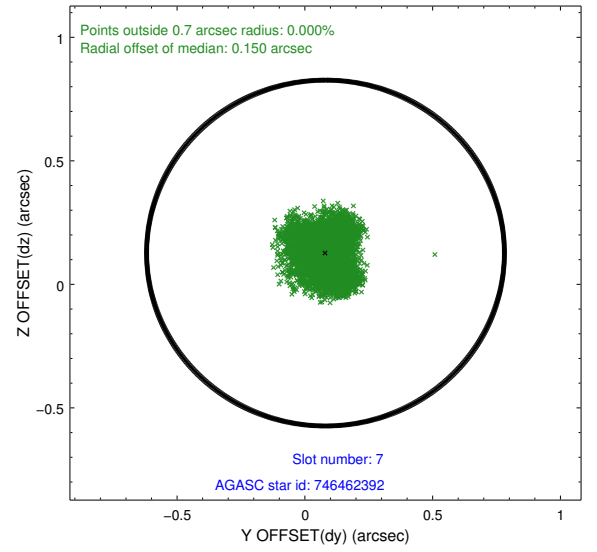
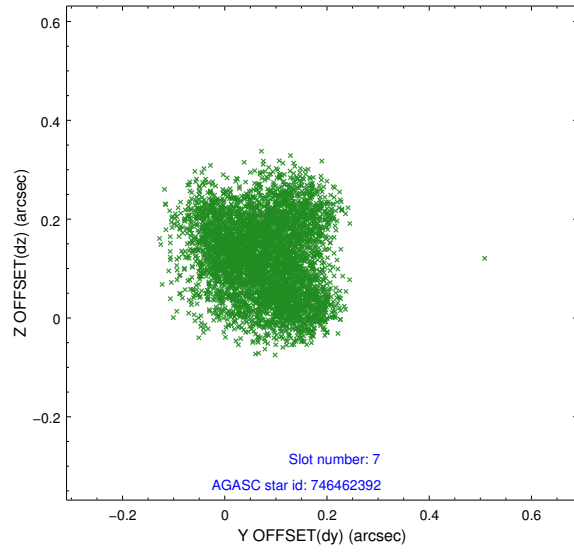
2.4.3 Slot 5



2.4.4 Slot 6

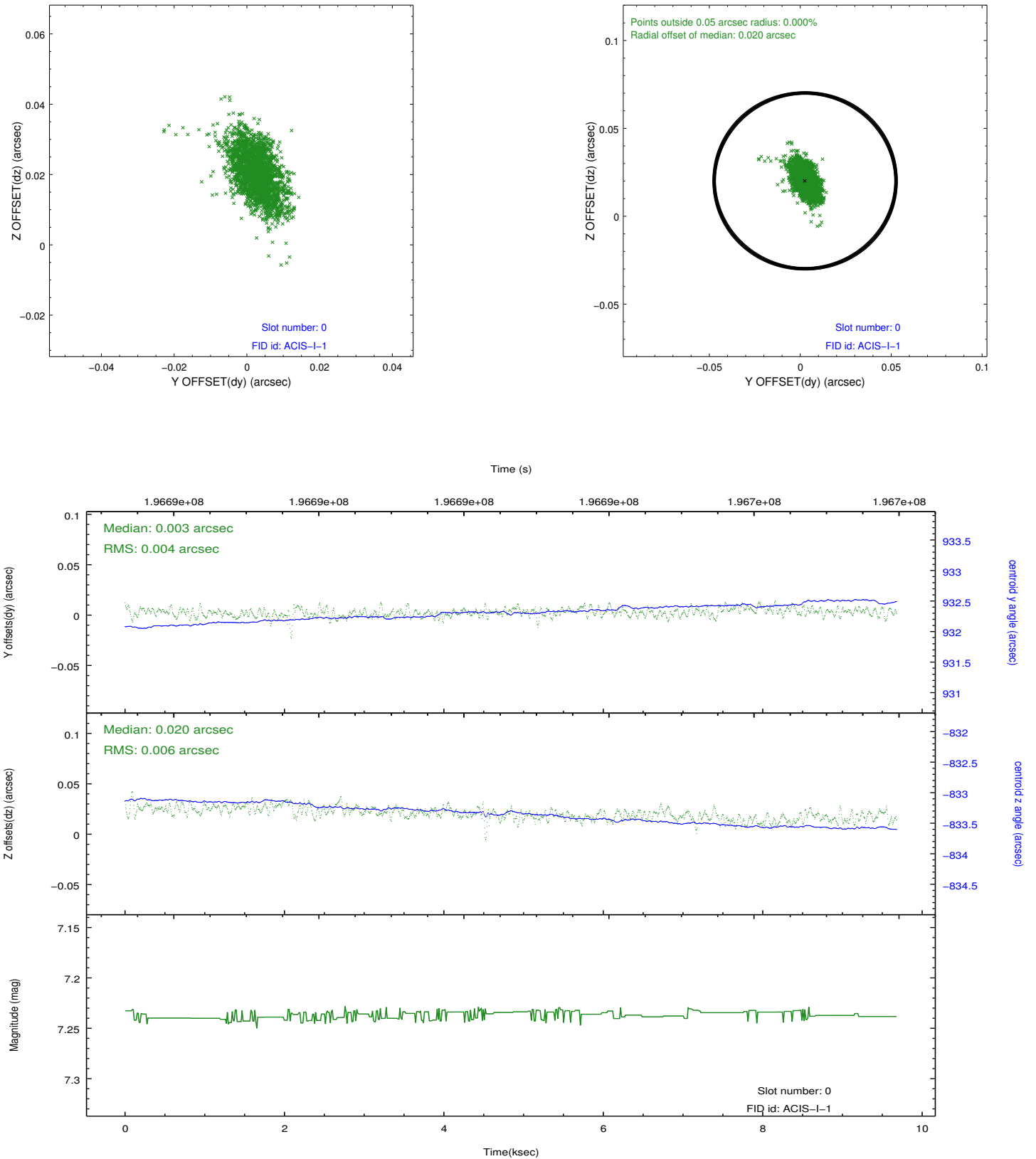


2.4.5 Slot 7

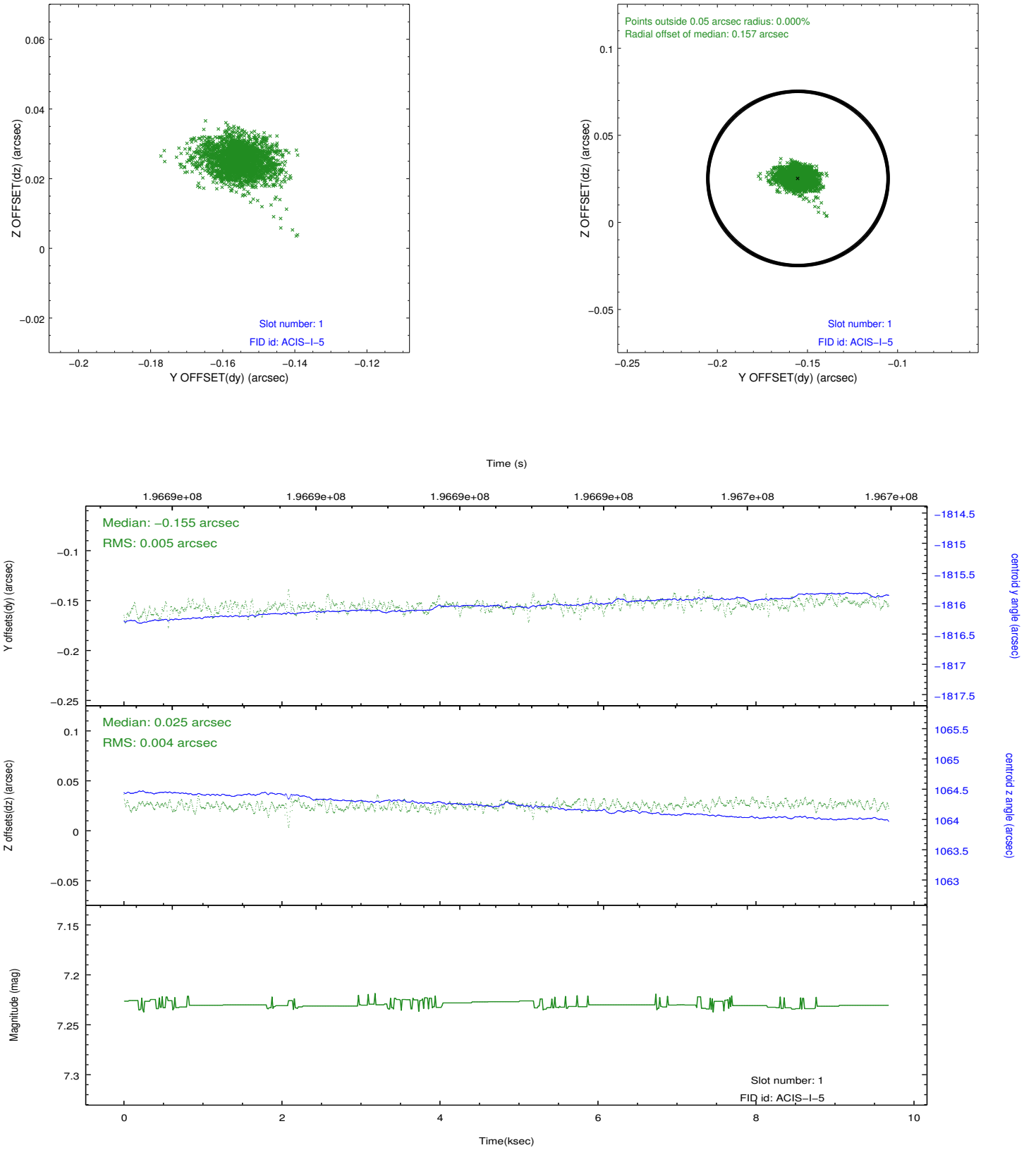


2.5 FID Slots

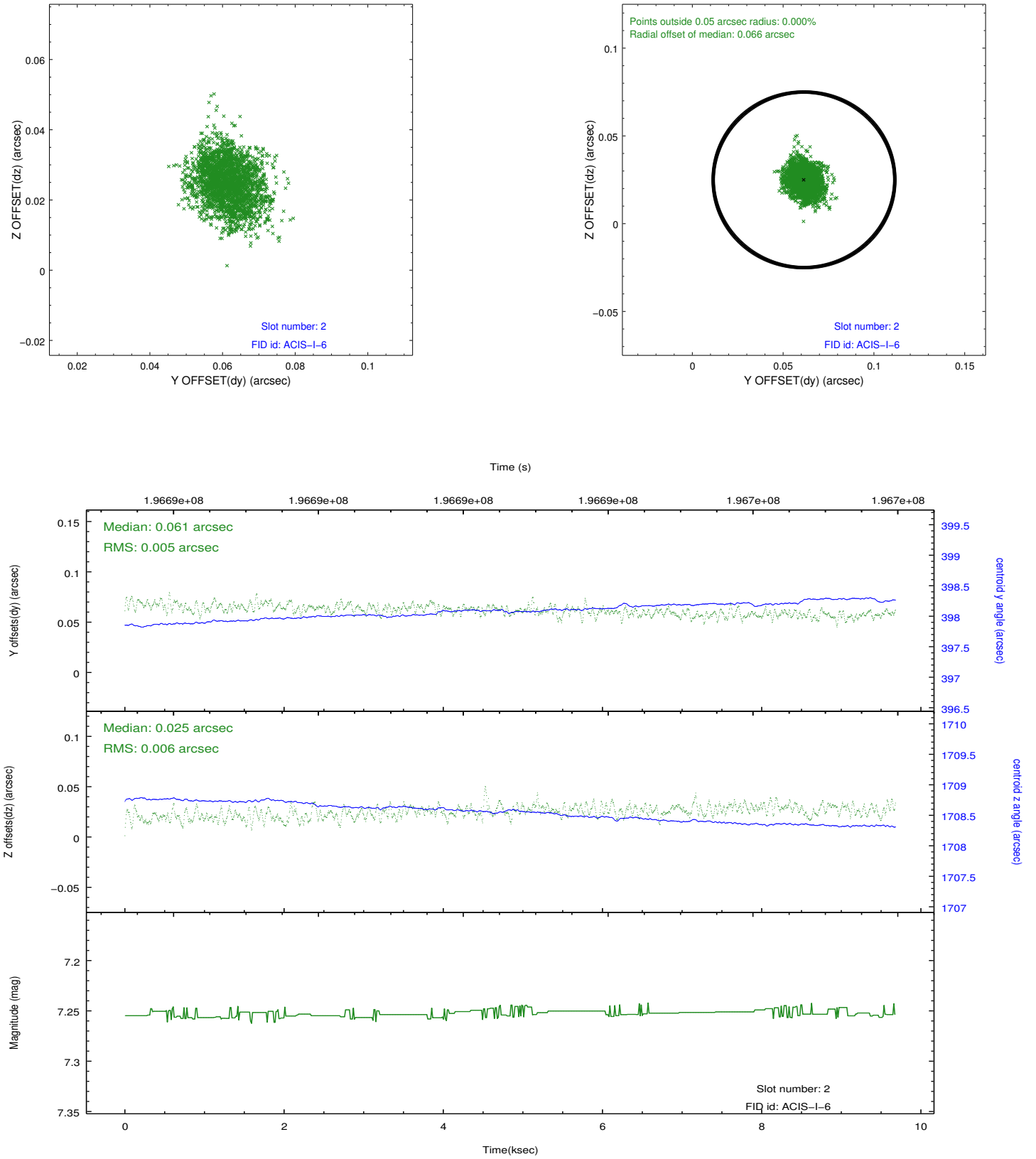
2.5.1 Slot 0



2.5.2 Slot 1



2.5.3 Slot 2



A Summary

A.1 Status

V&V Scientist	Jen Lauer
V&V Date (YYYY-MM-DD)	2012.12.14
V&V Edition	1
V&V Disposition and Status	OK
V&V Charge Time	9.676

A.2 Comments

Window constraint met.