

V&V Reference Report

L2 ASCDS Version : 7.6.8

Observation 5153 - L2 Version 001
Chandra X-Ray Center

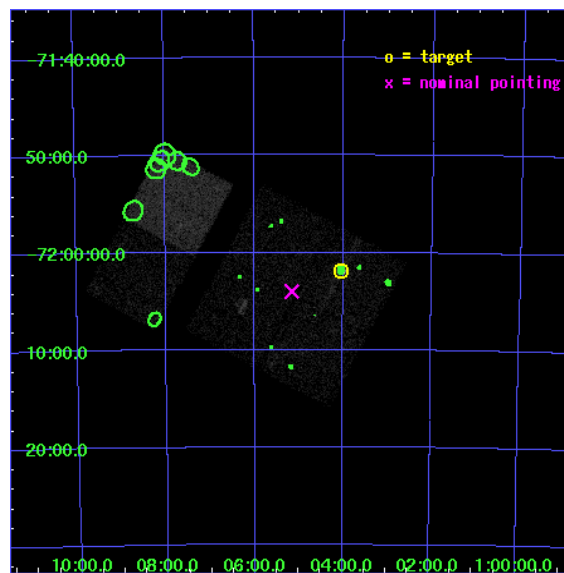
L2 Processing Date : Jun 23 2006

Contents

1	Front	2
2	OBI	3
2.1	OBI	3
2.1.1	Images	3
2.1.2	Bias	3
2.1.3	Parameters	4
2.1.4	Events	4
2.2	Compared Parameters	5
2.3	Aspect	6
2.4	Star Slots	9
2.4.1	Slot 3	9
2.4.2	Slot 4	10
2.4.3	Slot 5	11
2.4.4	Slot 6	12
2.4.5	Slot 7	13
2.5	FID Slots	14
2.5.1	Slot 0	14
2.5.2	Slot 1	15
2.5.3	Slot 2	16
3	Point Sources	17
A	Summary	18
A.1	Status	18
A.2	Comments	18

1 Front

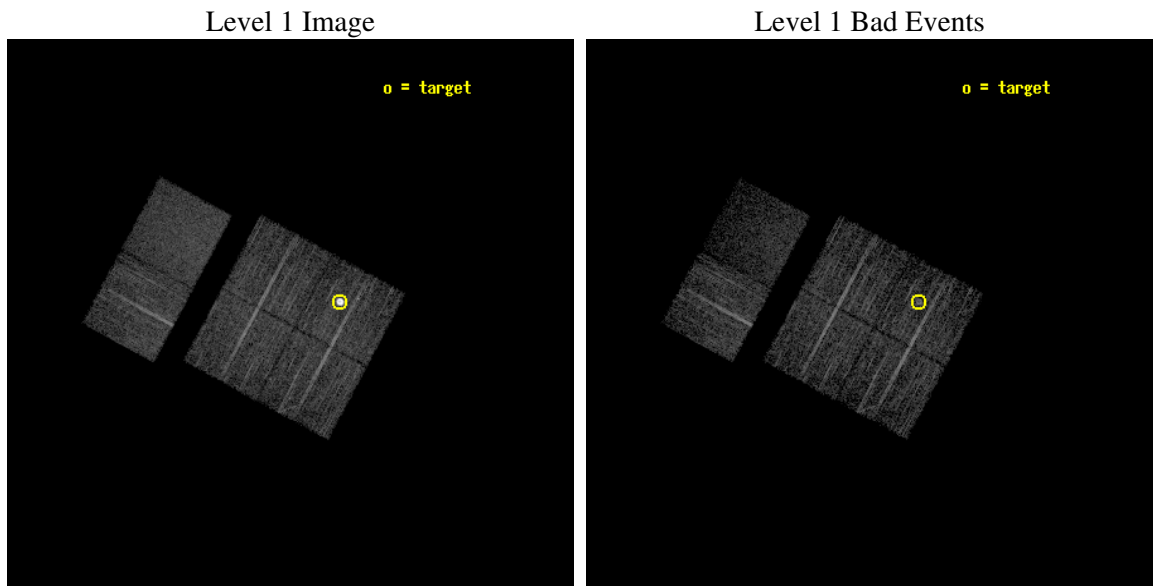
seq_num	590351
obs_id	5153
title	AO5A ACIS-I Calibration Observations of E0102-72
observer	Dr. CXC Calibration
object	E0102-72[I1,-120,-4.0,-3.68,0]
dtcycle	0
cycle	P
ra_targ	16.01
dec_targ	-72.032028
ra_nom	16.288407854698
dec_nom	-72.066756087364
roll_nom	298.31725317715
revision	2
ontime	7491.159011811
livetime	7396.301445769
ontime0	7491.1589818597
ontime1	7491.159011811
ontime2	7494.3999720812
ontime3	7494.3267696202
ontime6	7494.2447195053
ontime7	7494.2857595086
l2events	53203



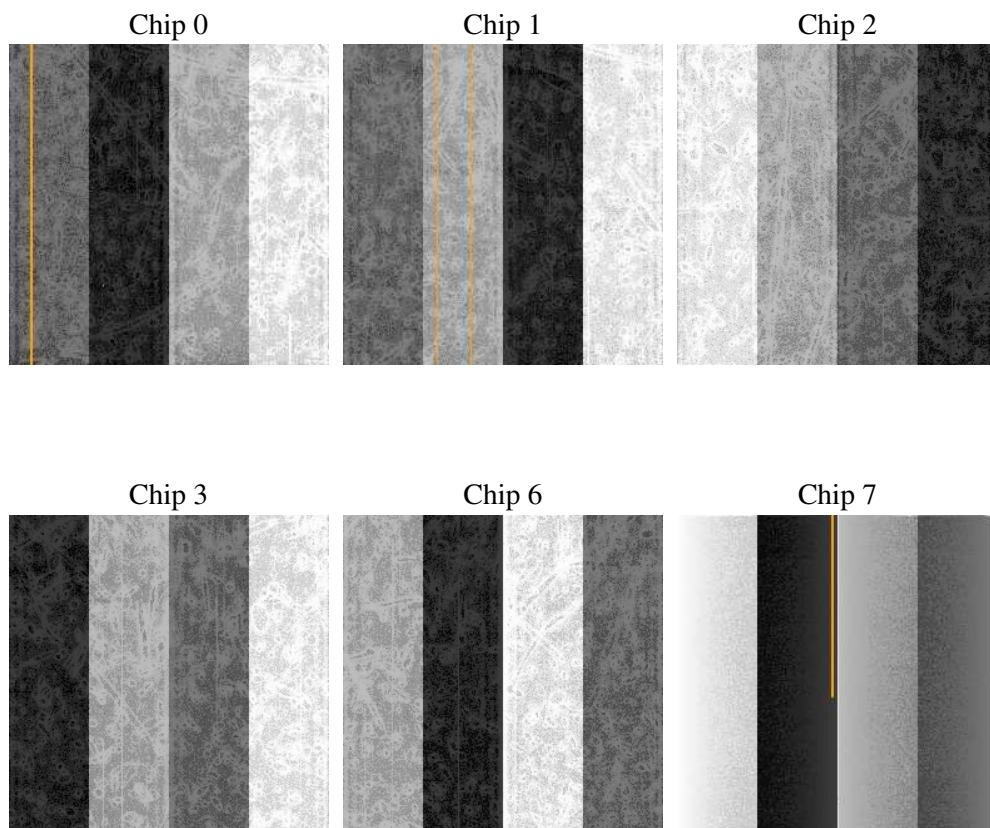
2 OBI

2.1 OBI

2.1.1 Images



2.1.2 Bias



2.1.3 Parameters

obi_num	0
ascdsver	7.6.8
caldsver	3.2.2
date	2006-06-23T20:20:41
revision	2

sched_exp_time	7791.000000
ontime	7496.4347557127
ontime0	7496.4347257614
ontime1	7496.4347557127
ontime2	7499.6757159829
ontime3	7496.4346958697
ontime6	7496.4347257614
ontime7	7496.4347257614
l1events	228083

2.1.4 Events

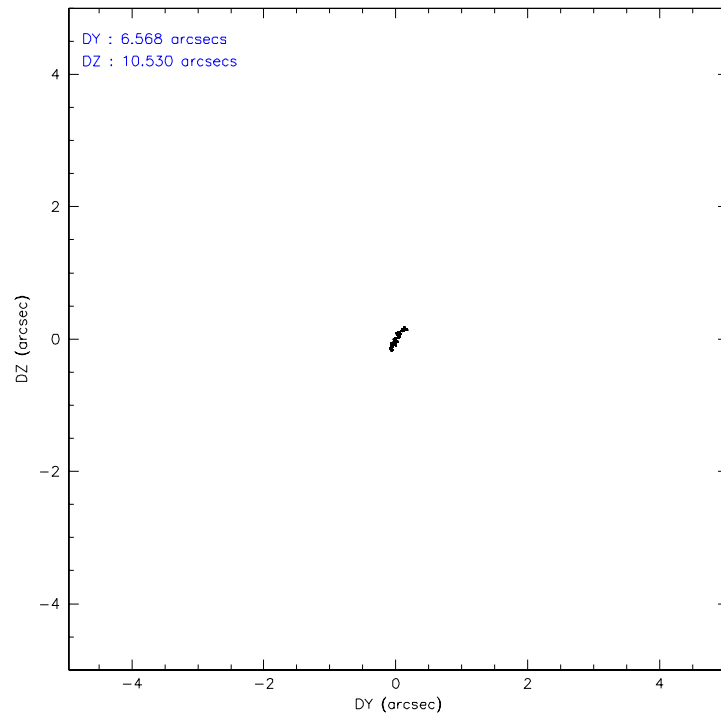
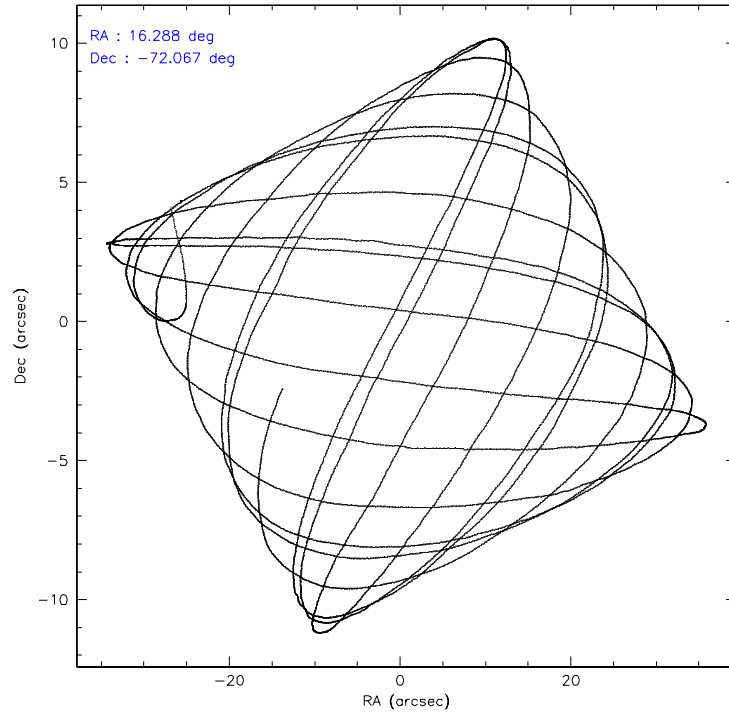
	ccd 0	ccd 1	ccd 2	ccd 3	ccd 6	ccd 7
level 1 events	33074	56991	34975	34129	35414	33500
rejected events	28905	29704	31037	30674	31865	18051
rejected %	87%	52%	88%	89%	89%	53%

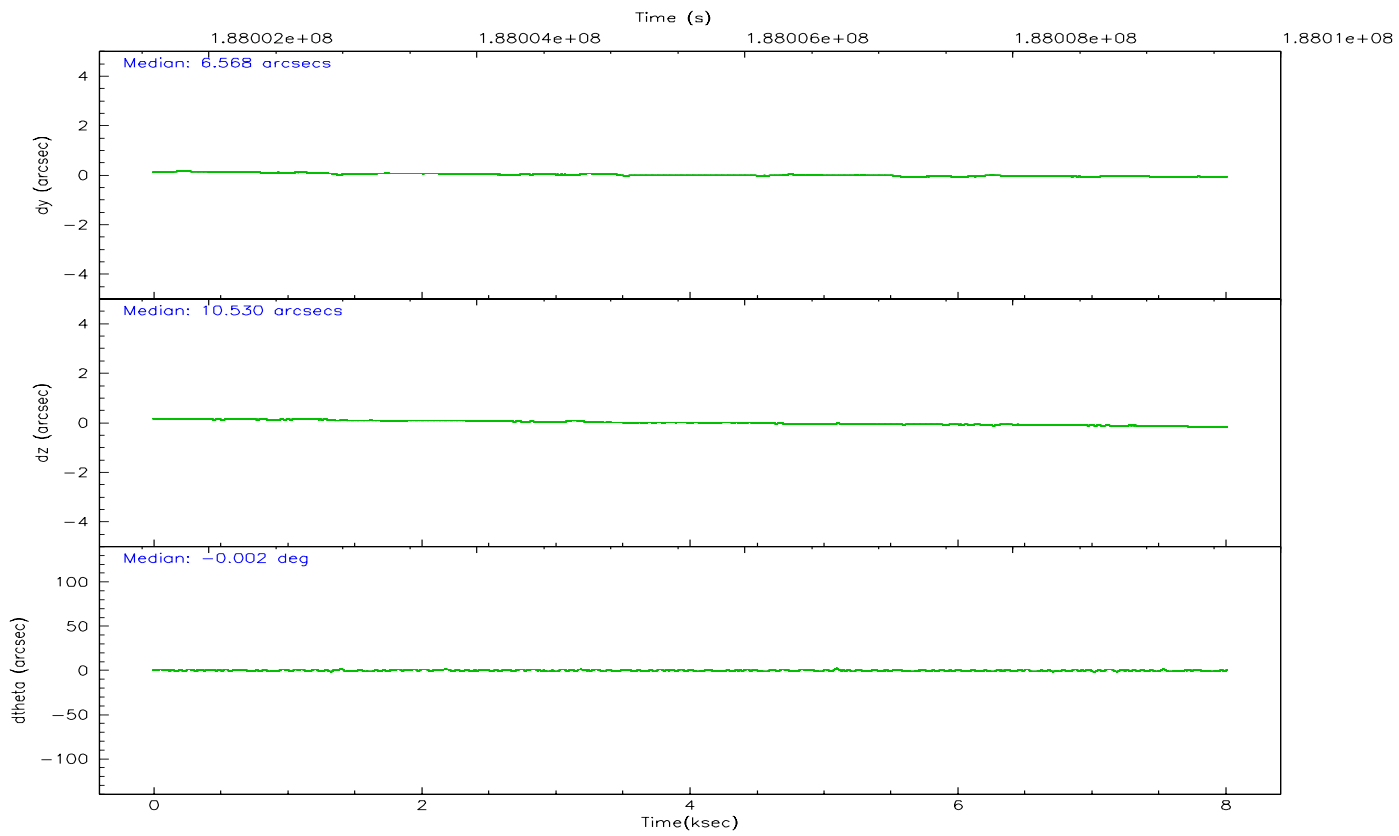
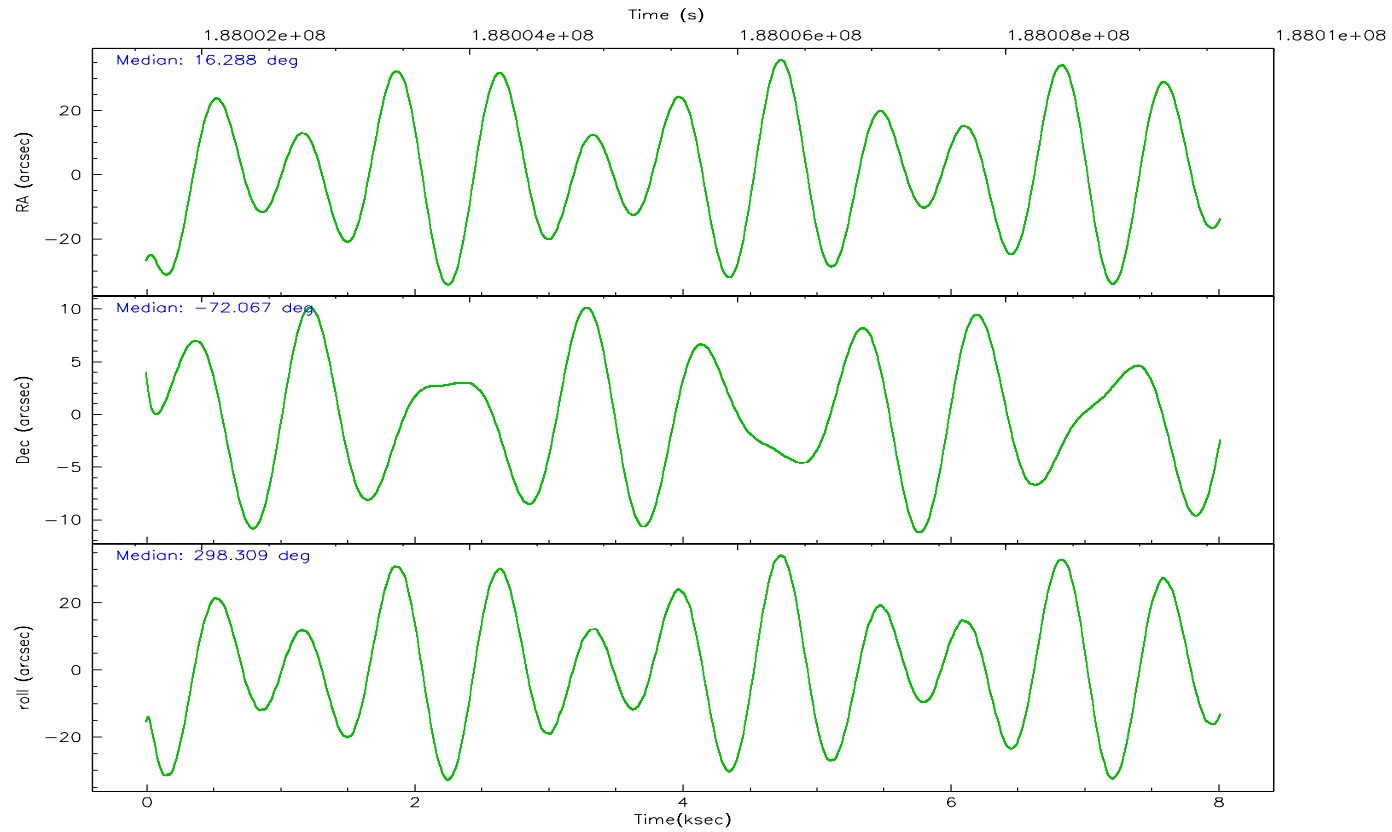
	ccd 0	ccd 1	ccd 2	ccd 3	ccd 6	ccd 7
grade 0 events	1886	22230	1762	1428	1289	1188
	5%	39%	5%	4%	3%	3%
grade 1 events	11	182	16	19	22	17
	0%	0%	0%	0%	0%	0%
grade 2 events	847	2511	779	721	785	3895
	2%	4%	2%	2%	2%	11%
grade 3 events	418	879	377	367	412	1001
	1%	1%	1%	1%	1%	2%
grade 4 events	387	862	415	346	377	981
	1%	1%	1%	1%	1%	2%
grade 5 events	1037	1176	950	1186	1262	2751
	3%	2%	2%	3%	3%	8%
grade 6 events	633	825	607	595	687	8390
	1%	1%	1%	1%	1%	25%
grade 7 events	27855	28326	30069	29467	30580	15277
	84%	49%	85%	86%	86%	45%

2.2 Compared Parameters

Parameter	Planned	Actual	Parameter	Planned	Actual
Instrument	ACIS	ACIS	Obspar format version number	6	6
Detector	ACIS-012367	ACIS-012367	Obspar file type	PREDICTED	ACTUAL
Grating	NONE	NONE	Obspar update status	NONE	UPDATED
Data mode	VFAINT	VFAINT	On-chip summing requested	N	N
Observation mode	POINTING	POINTING	Subarray requested	NONE	NONE
Pointing RA	16.212787	16.28840785469804	Alternating exposures requested	N	N
Pointing Dec	-72.052441	-72.06675608736386	Primary exposure time	0.000000	3.2
Pointing Roll	298.036605	298.3172531771472			
Window start time	181353664.184000	181353664.184000			
Window stop time	189216064.184000	189216064.184000			
SIM focus pos (mm)	-0.782348	-0.7809083437167272			
SIM defocus (mm)	0	0.001439871863259334			
SIM translation stage pos (mm)	-233.592463	-233.5874344608287			
SIM translation stage offset (mm)	0	-0.005018542100998502			
Observation start time	188001802.184000	188000820.27886			
Observation start date	2003-12-16T22:42:18	2003-12-16T22:27:00			
Observation end time	188009593.184000	188009728.04175			
Observation end date	2003-12-17T00:52:09	2003-12-17T00:55:28			
Read mode	TIMED	TIMED			

2.3 Aspect



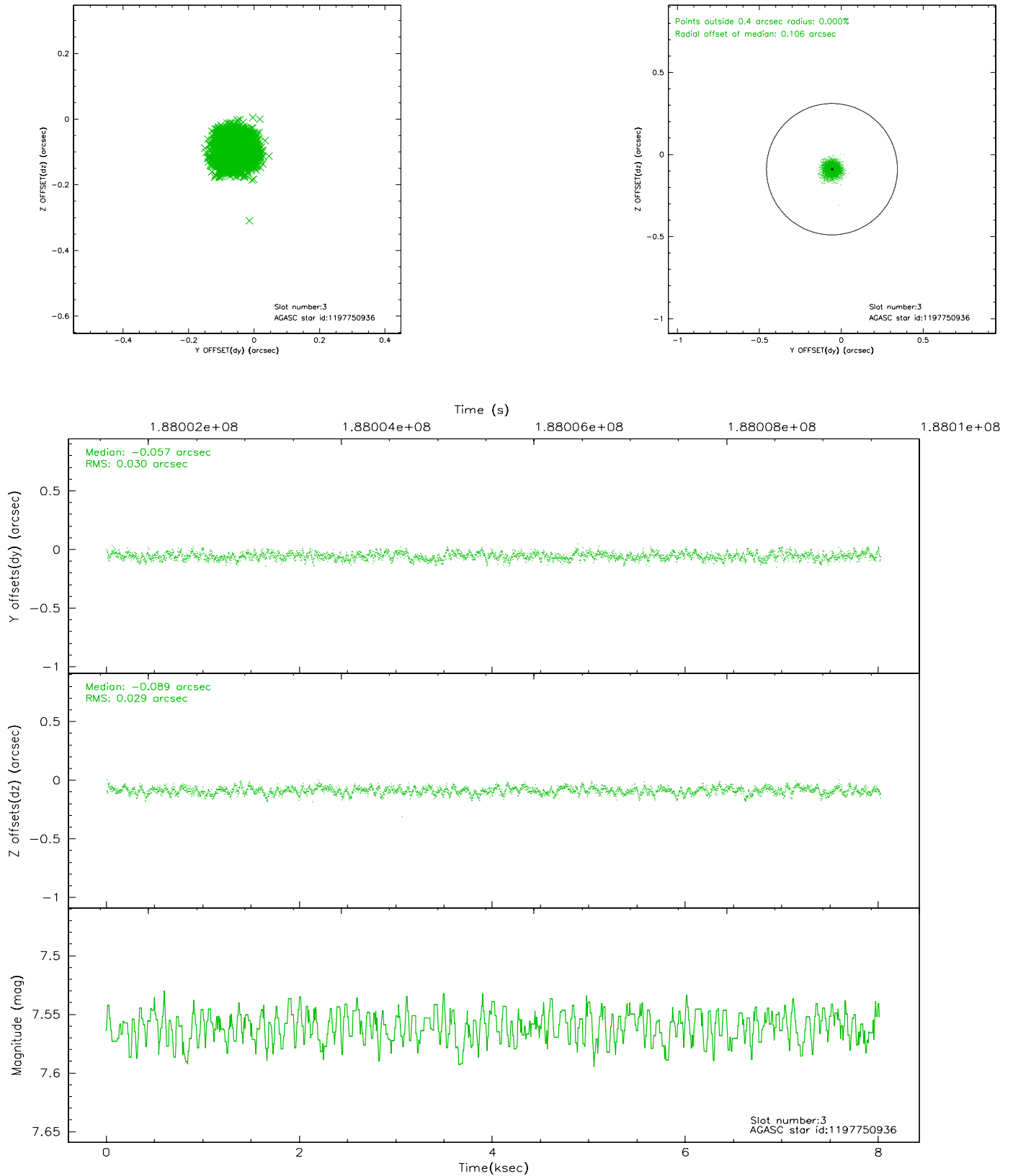


Slot Statistics

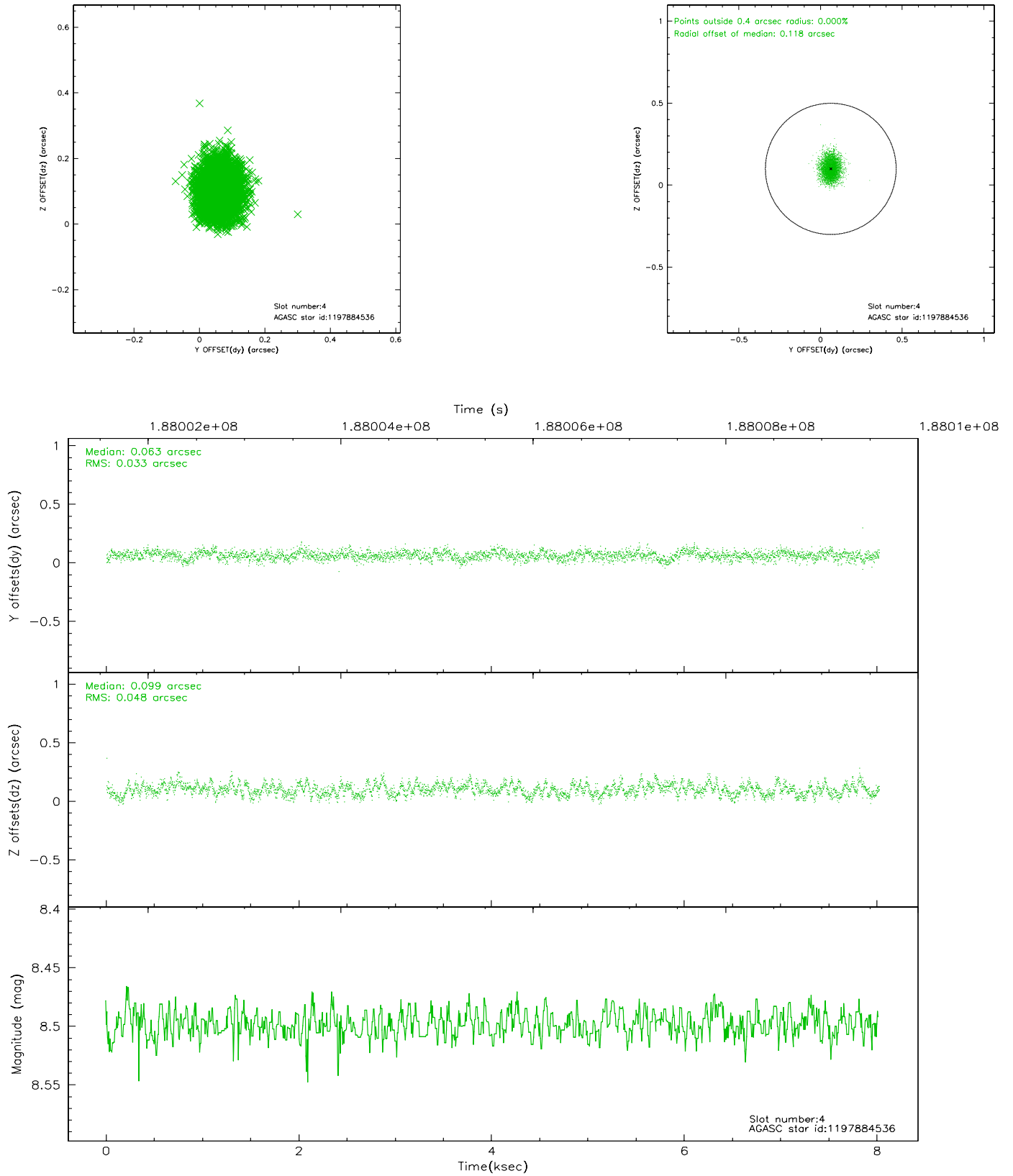
slot	status	id	mag	n_pts	med_dy	med_dz	dr1	dr2	ra	dec	mean_y	mean_z
0	FID	ACIS-I-2	7.14	1955	-0.045	-0.071	0.009	0.015	0.000000	0.000000	-761.11	-840.46
1	FID	ACIS-I-4	7.18	1956	0.051	0.052	0.006	0.011	0.000000	0.000000	2152.73	1065.49
2	FID	ACIS-I-5	7.23	1956	-0.107	0.088	0.008	0.014	0.000000	0.000000	-1814.10	1064.17
3	GUIDE	1197750936	7.56	3912	-0.057	-0.089	0.045	0.072	15.387940	-71.549550	-2033.64	18.38
4	GUIDE	1197884536	8.50	3909	0.063	0.099	0.062	0.101	17.160729	-71.835289	-182.98	1302.93
5	GUIDE	1197884712	8.30	3912	0.105	0.049	0.056	0.092	16.087398	-72.252690	572.15	-459.56
6	GUIDE	1197885328	7.23	3912	-0.005	-0.054	0.054	0.083	16.283090	-71.733943	-974.38	609.42
7	GUIDE	1198189696	7.38	3911	-0.108	-0.003	0.053	0.086	15.223750	-72.697522	1560.02	-2029.60

2.4 Star Slots

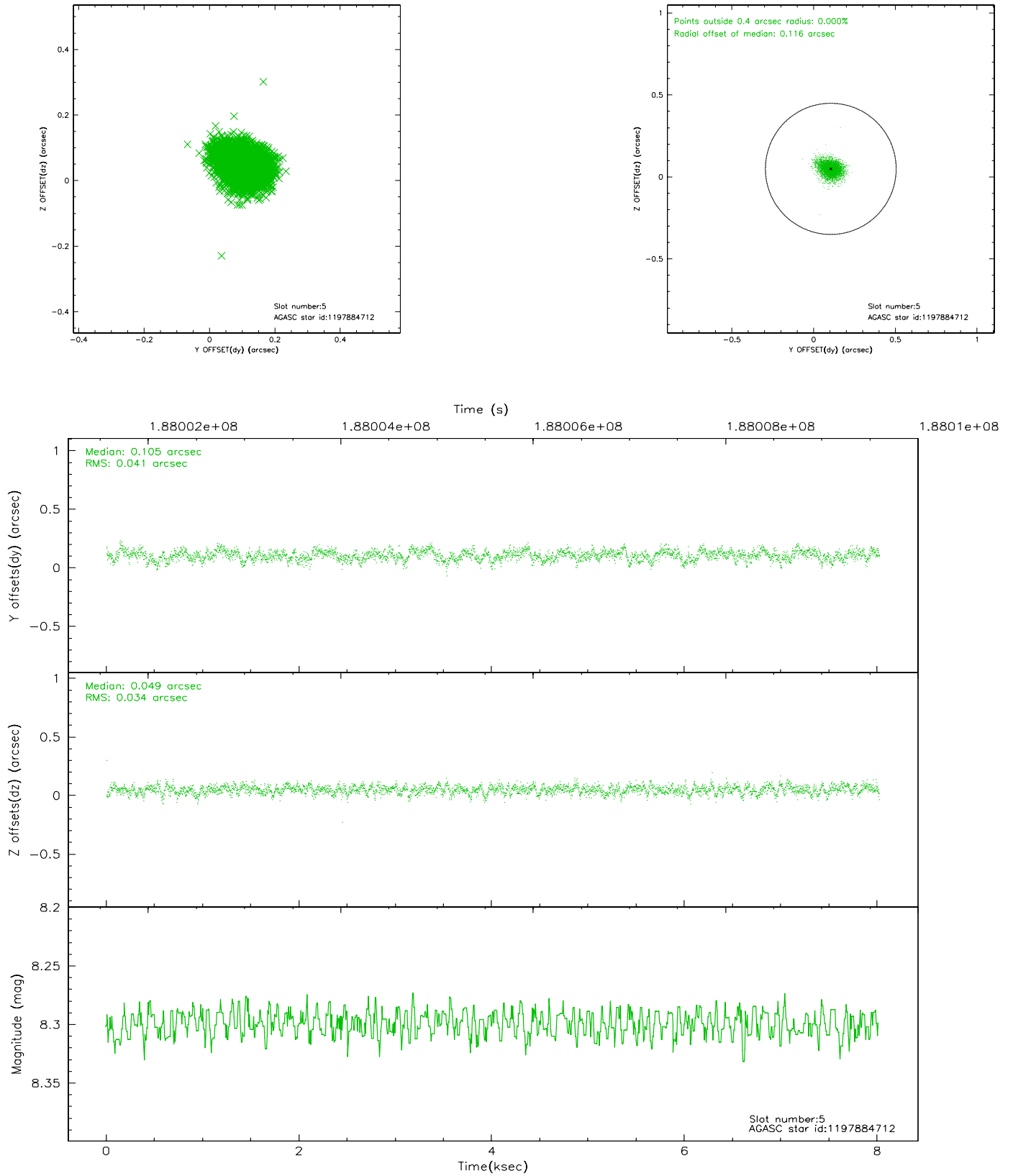
2.4.1 Slot 3



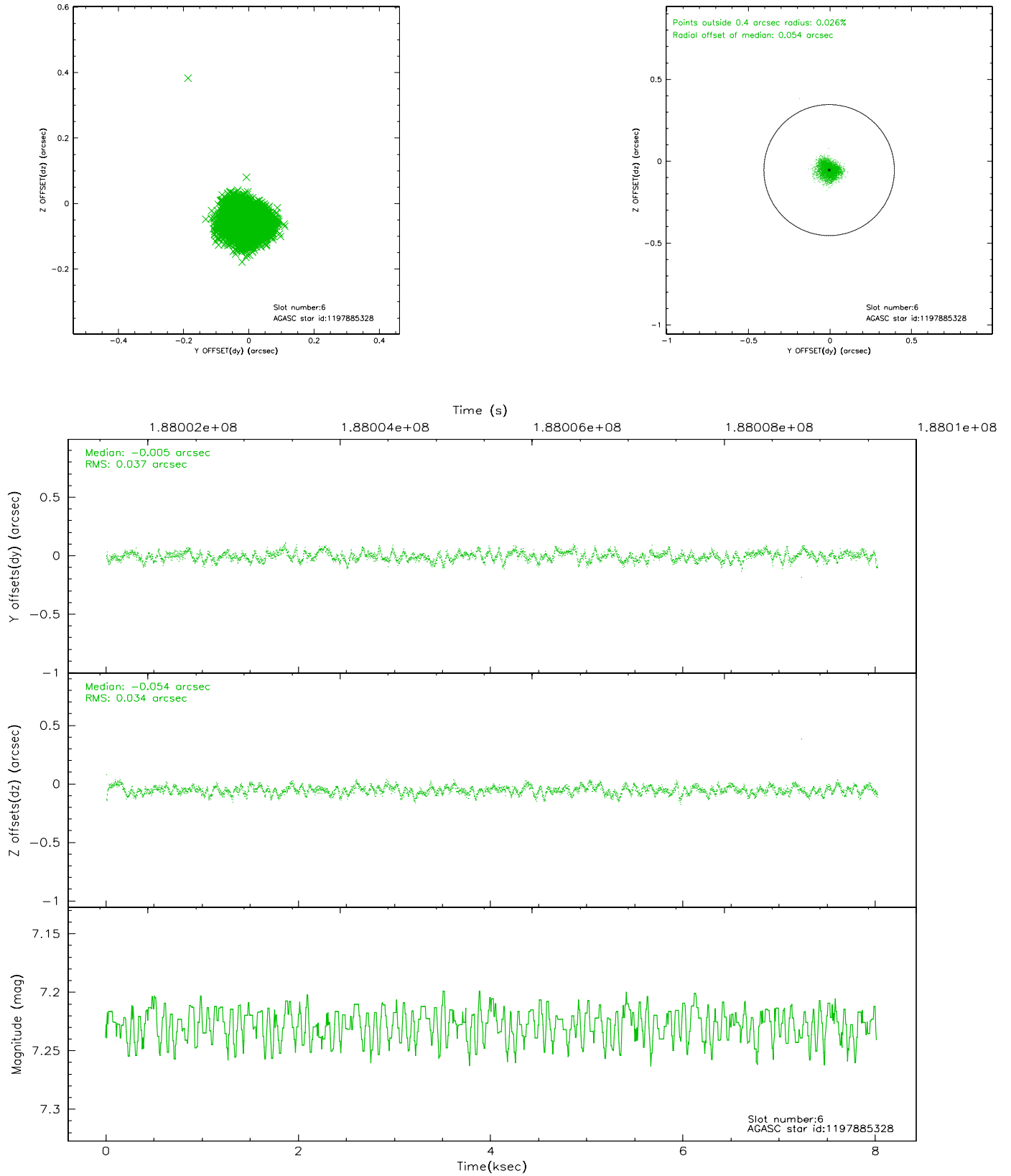
2.4.2 Slot 4



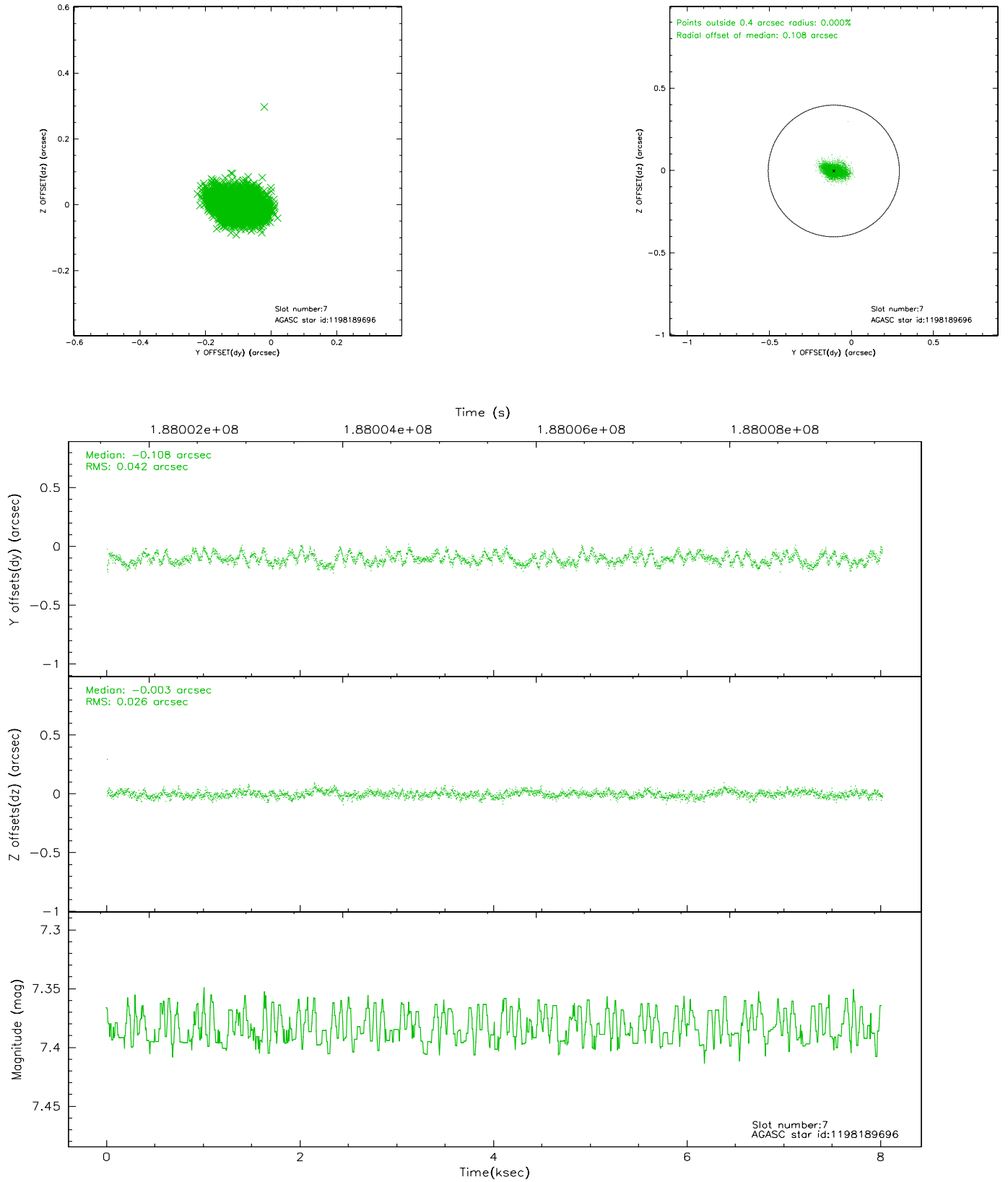
2.4.3 Slot 5



2.4.4 Slot 6

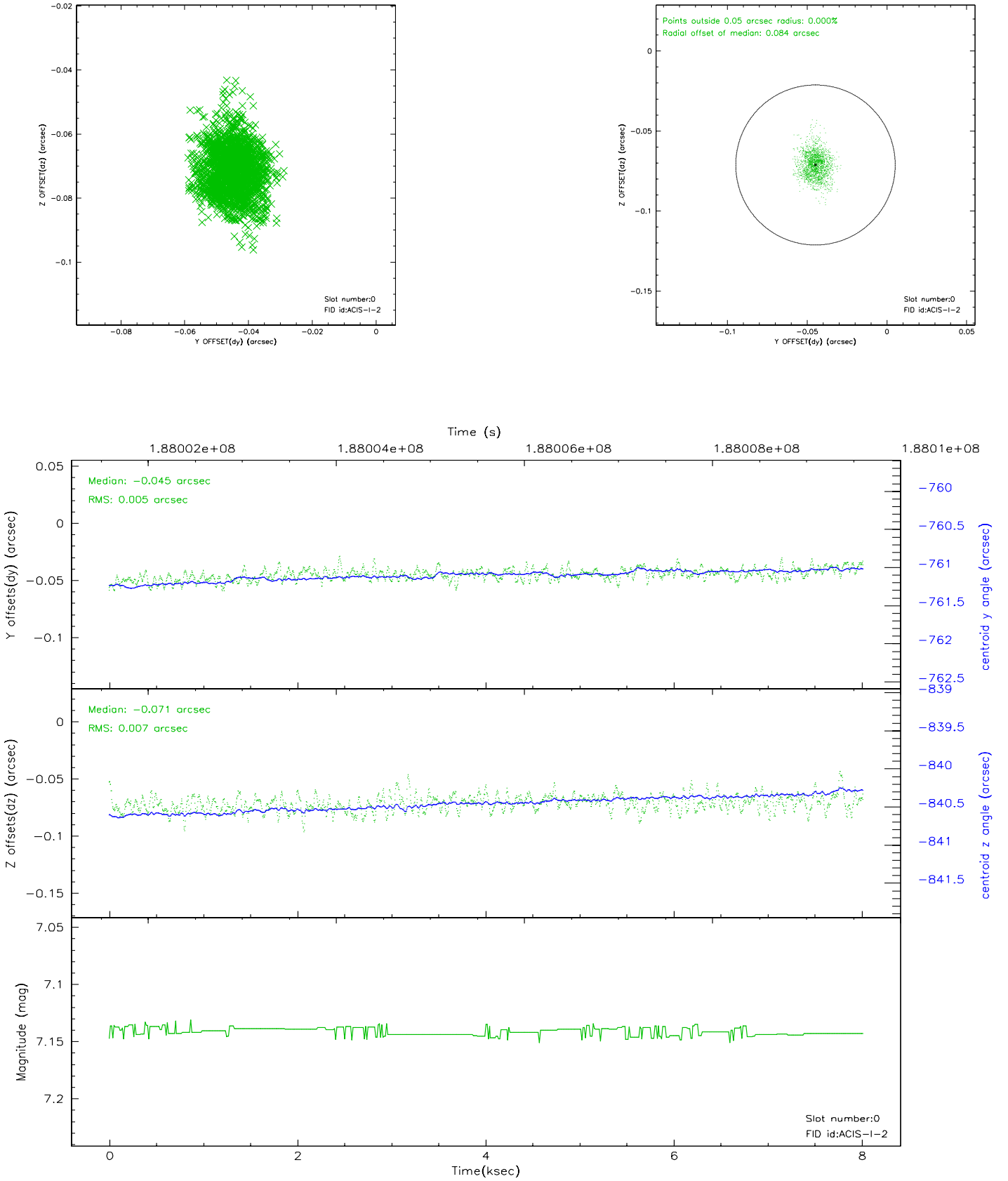


2.4.5 Slot 7

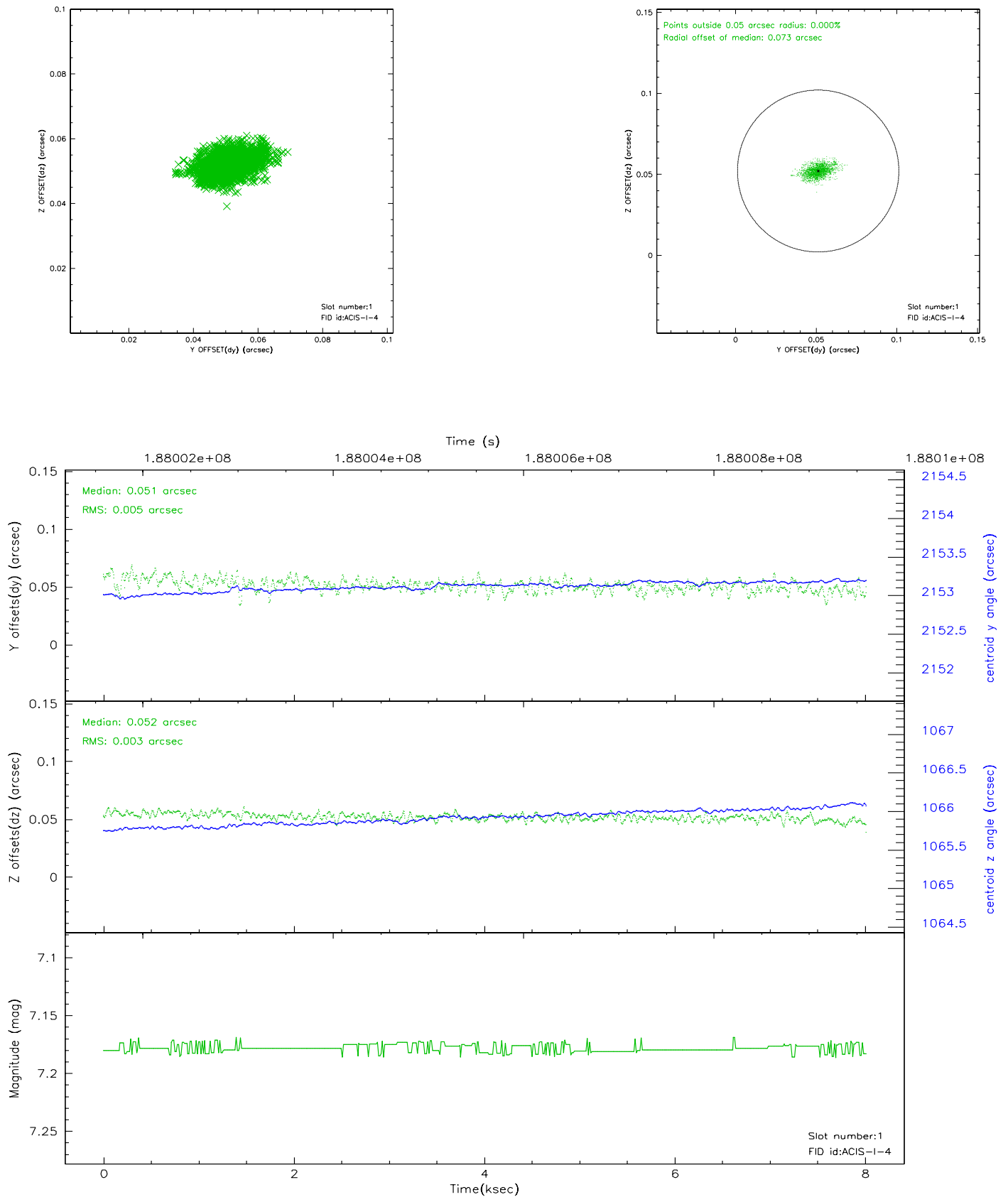


2.5 FID Slots

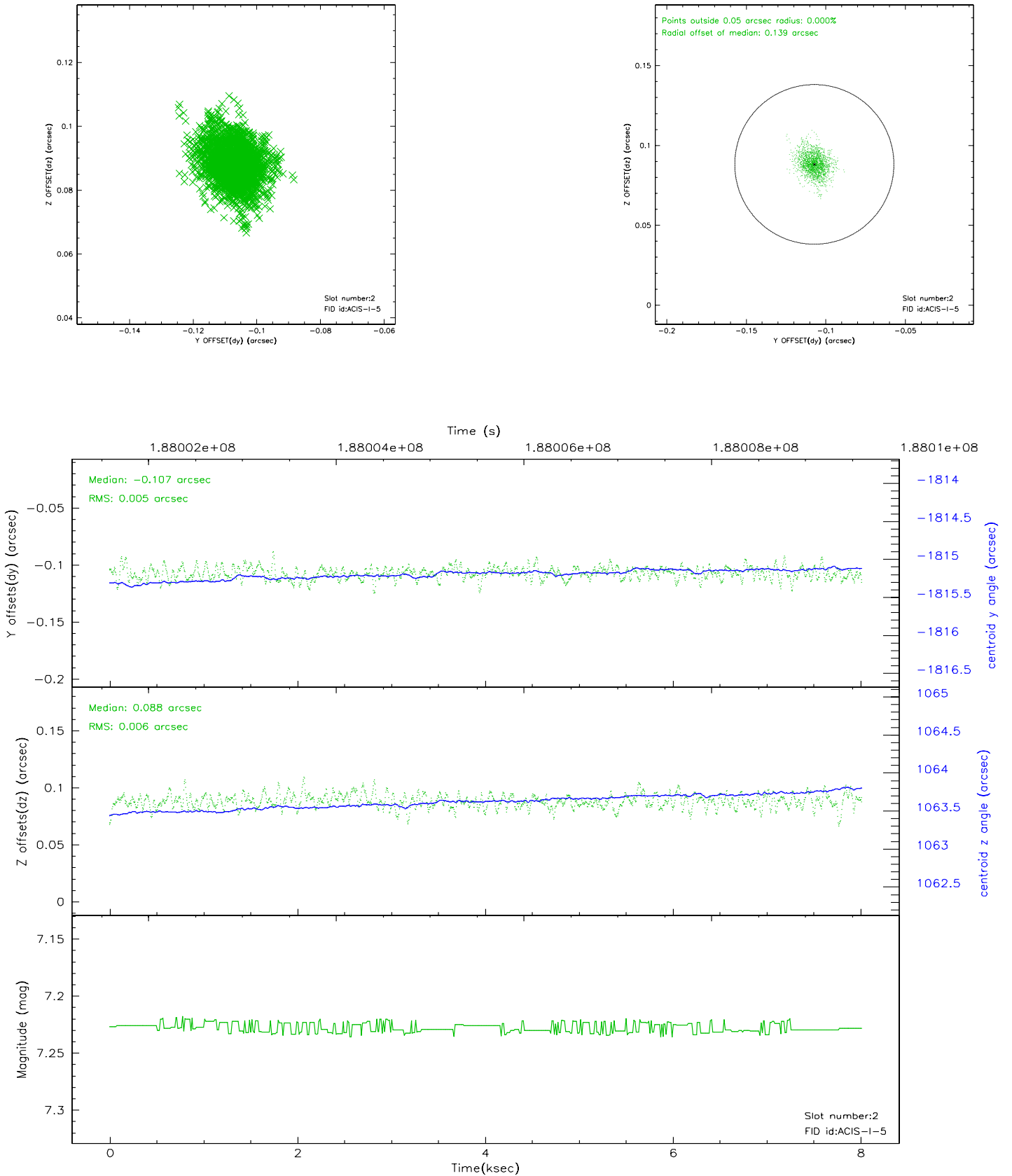
2.5.1 Slot 0



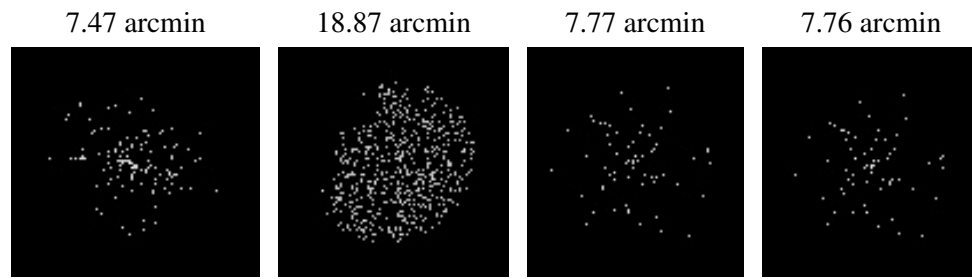
2.5.2 Slot 1



2.5.3 Slot 2



3 Point Sources



A Summary

A.1 Status

V&V Scientist	Jen Lauer
V&V Date (YYYY-MM-DD)	2006.06.26
V&V Edition	1
V&V Disposition and Status	OK
V&V Charge Time	7.494

A.2 Comments

Window constraint met.