

V&V Reference Report

L2 ASCDS Version : 7.6.8

Observation 5151 - L2 Version 001
Chandra X-Ray Center

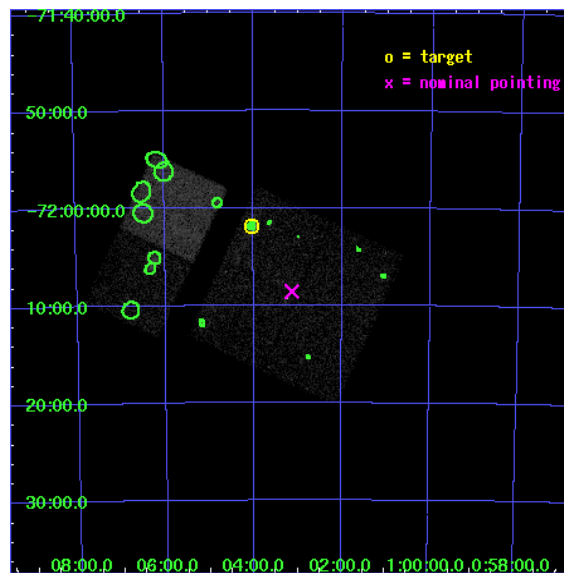
L2 Processing Date : Jun 22 2006

Contents

1	Front	2
2	OBI	3
2.1	OBI	3
2.1.1	Images	3
2.1.2	Bias	3
2.1.3	Parameters	4
2.1.4	Events	4
2.2	Compared Parameters	5
2.3	Aspect	6
2.4	Star Slots	9
2.4.1	Slot 3	9
2.4.2	Slot 4	10
2.4.3	Slot 5	11
2.4.4	Slot 6	12
2.4.5	Slot 7	13
2.5	FID Slots	14
2.5.1	Slot 0	14
2.5.2	Slot 1	15
2.5.3	Slot 2	16
3	Point Sources	17
A	Summary	18
A.1	Status	18
A.2	Comments	18

1 Front

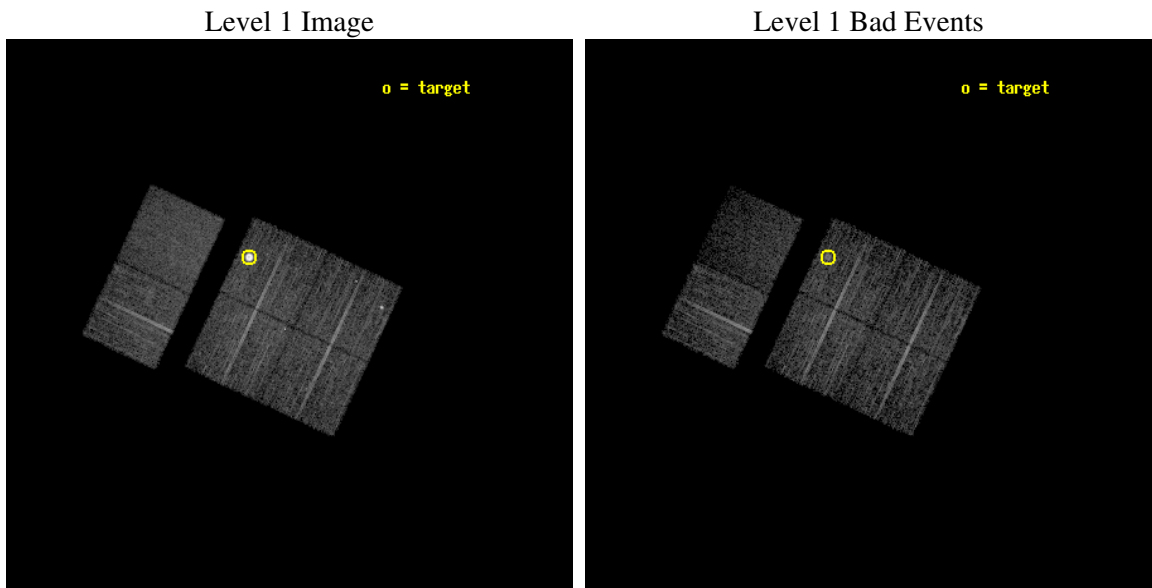
seq_num	590349
obs_id	5151
title	AO5A ACIS-I Calibration Observations of E0102-72
observer	Dr. CXC Calibration
object	E0102-72[S3,-120,-3,0,0]
dtcycle	0
cycle	P
ra_targ	16.01
dec_targ	-72.032028
ra_nom	15.783333650297
dec_nom	-72.142902157783
roll_nom	295.13746298581
revision	2
ontime	7670.3999714255
livetime	7573.272748427
ontime0	7670.3999714255
ontime1	7670.3999714255
ontime2	7670.3999714255
ontime3	7670.3999714255
ontime6	7670.3999714255
ontime7	7670.3999714255
l2events	53623



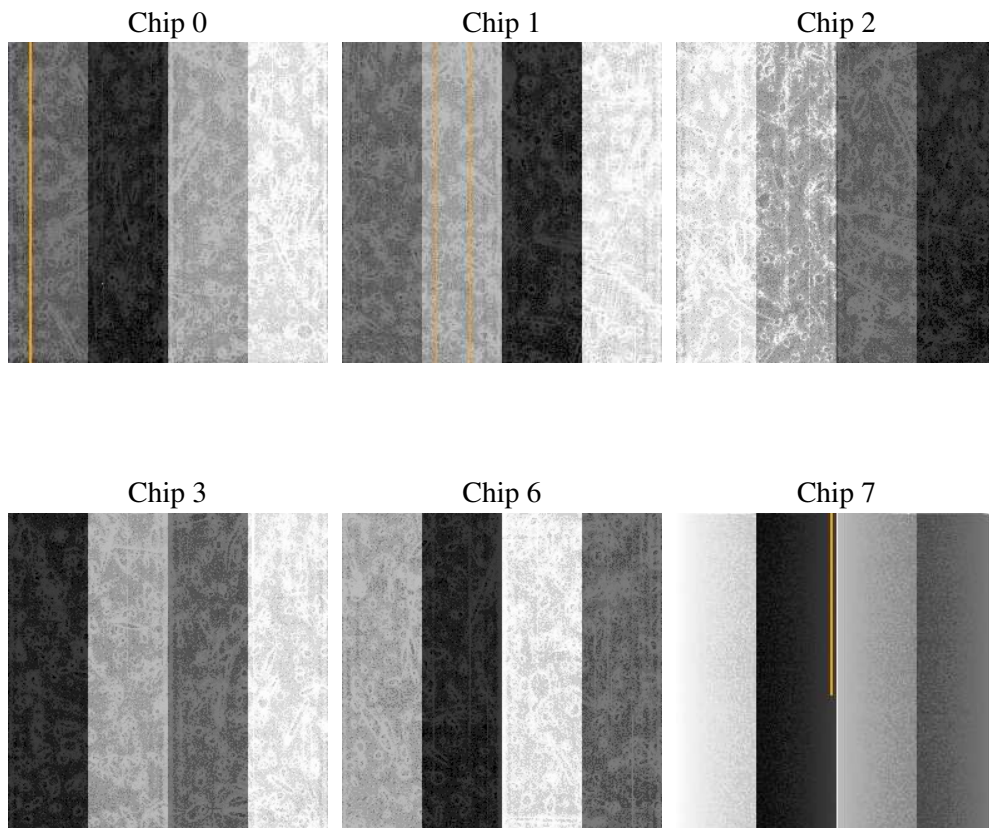
2 OBI

2.1 OBI

2.1.1 Images



2.1.2 Bias



2.1.3 Parameters

obi_num	0
ascdsver	7.6.8
caldsver	3.2.2
date	2006-06-22T04:33:07
revision	2

sched_exp_time	7914.699000
ontime	7677.9318635762
ontime0	7677.9318635762
ontime1	7677.9318635762
ontime2	7677.9318635762
ontime3	7677.9318635762
ontime6	7677.9318635762
ontime7	7677.9318635762
l1events	236643

2.1.4 Events

	ccd 0	ccd 1	ccd 2	ccd 3	ccd 6	ccd 7
level 1 events	33727	35597	39116	56046	36874	35283
rejected events	29866	30510	34683	31574	32807	19157
rejected %	88%	85%	88%	56%	88%	54%

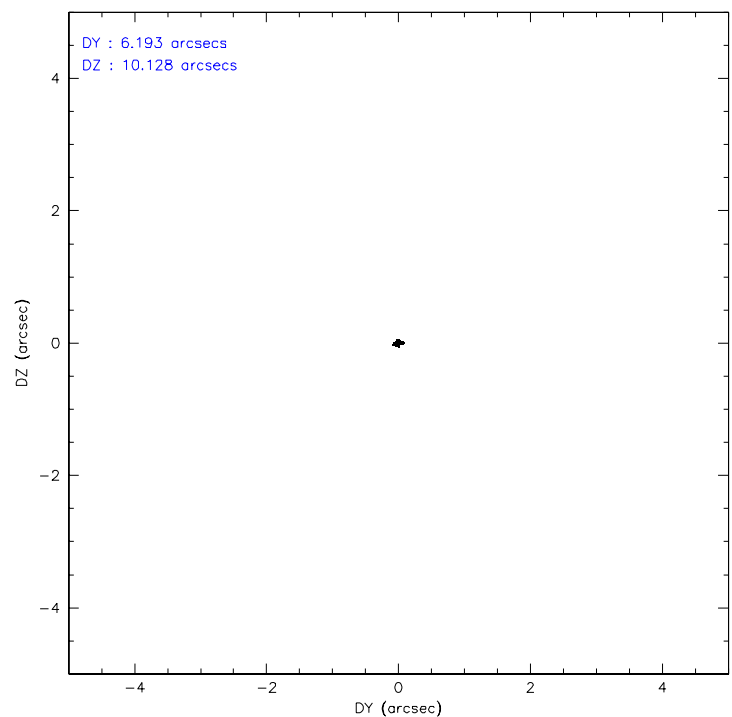
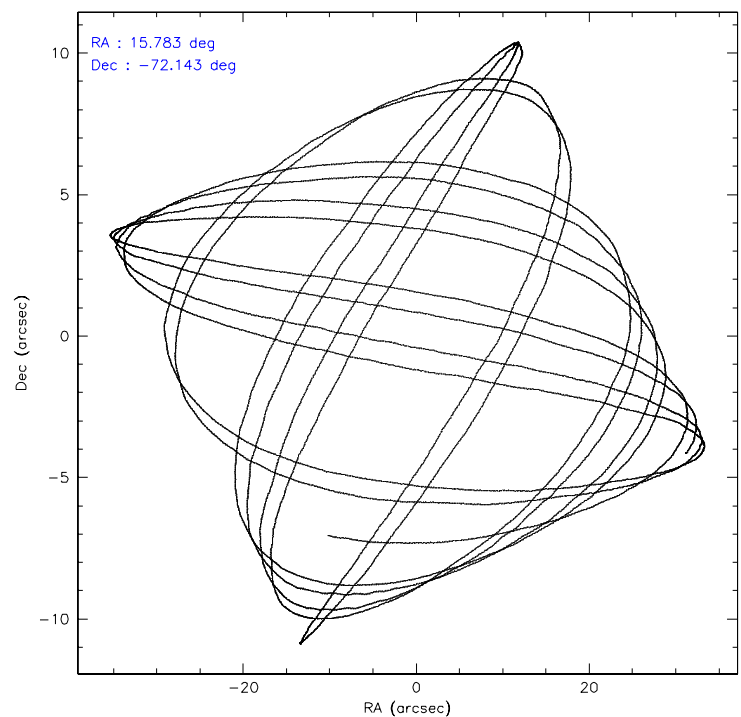
	ccd 0	ccd 1	ccd 2	ccd 3	ccd 6	ccd 7
grade 0 events	1533	2453	2020	19924	1689	1212
	4%	6%	5%	35%	4%	3%
grade 1 events	19	18	20	156	13	19
	0%	0%	0%	0%	0%	0%
grade 2 events	843	942	924	2160	815	3994
	2%	2%	2%	3%	2%	11%
grade 3 events	413	465	423	805	396	981
	1%	1%	1%	1%	1%	2%
grade 4 events	395	461	424	789	419	1041
	1%	1%	1%	1%	1%	2%
grade 5 events	1113	1139	1026	1286	1306	2778
	3%	3%	2%	2%	3%	7%
grade 6 events	683	771	645	814	753	8911
	2%	2%	1%	1%	2%	25%
grade 7 events	28728	29348	33634	30112	31483	16347
	85%	82%	85%	53%	85%	46%

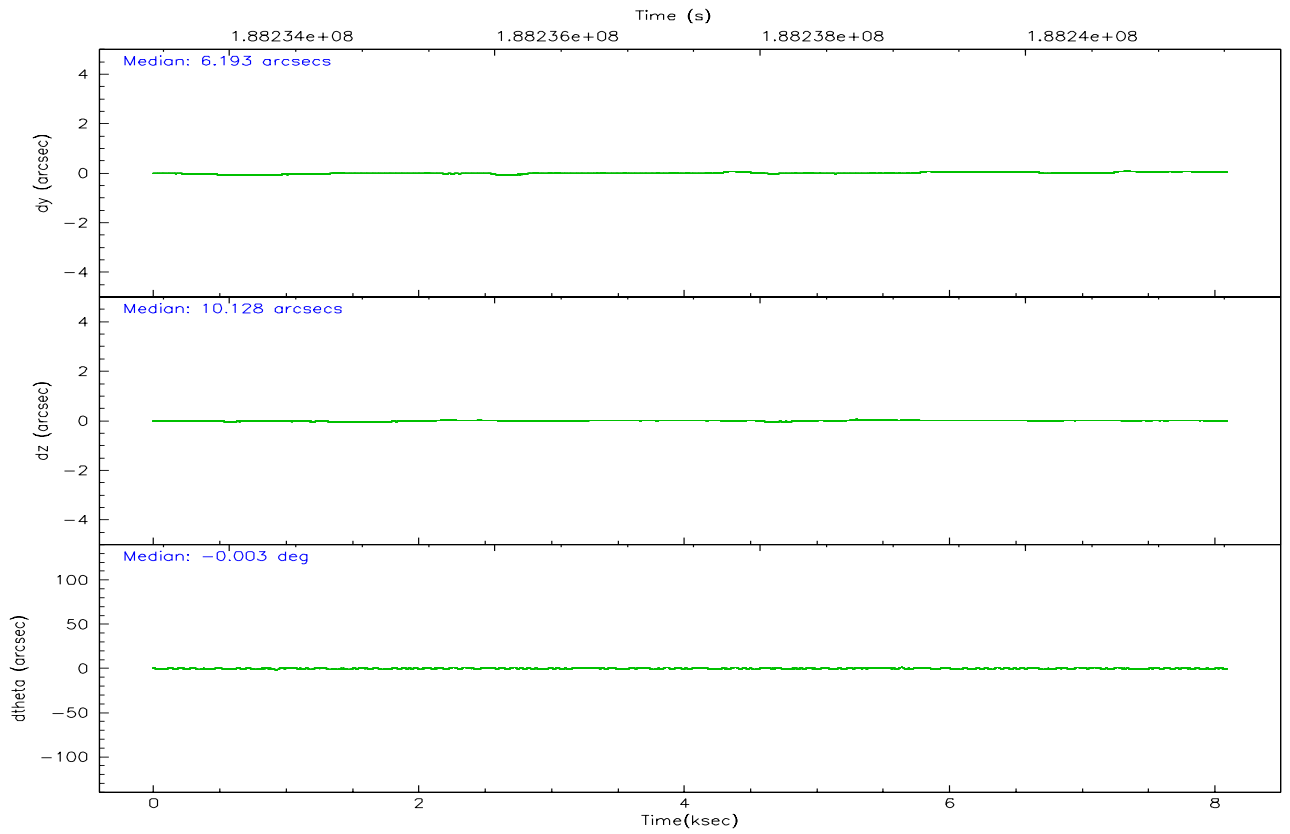
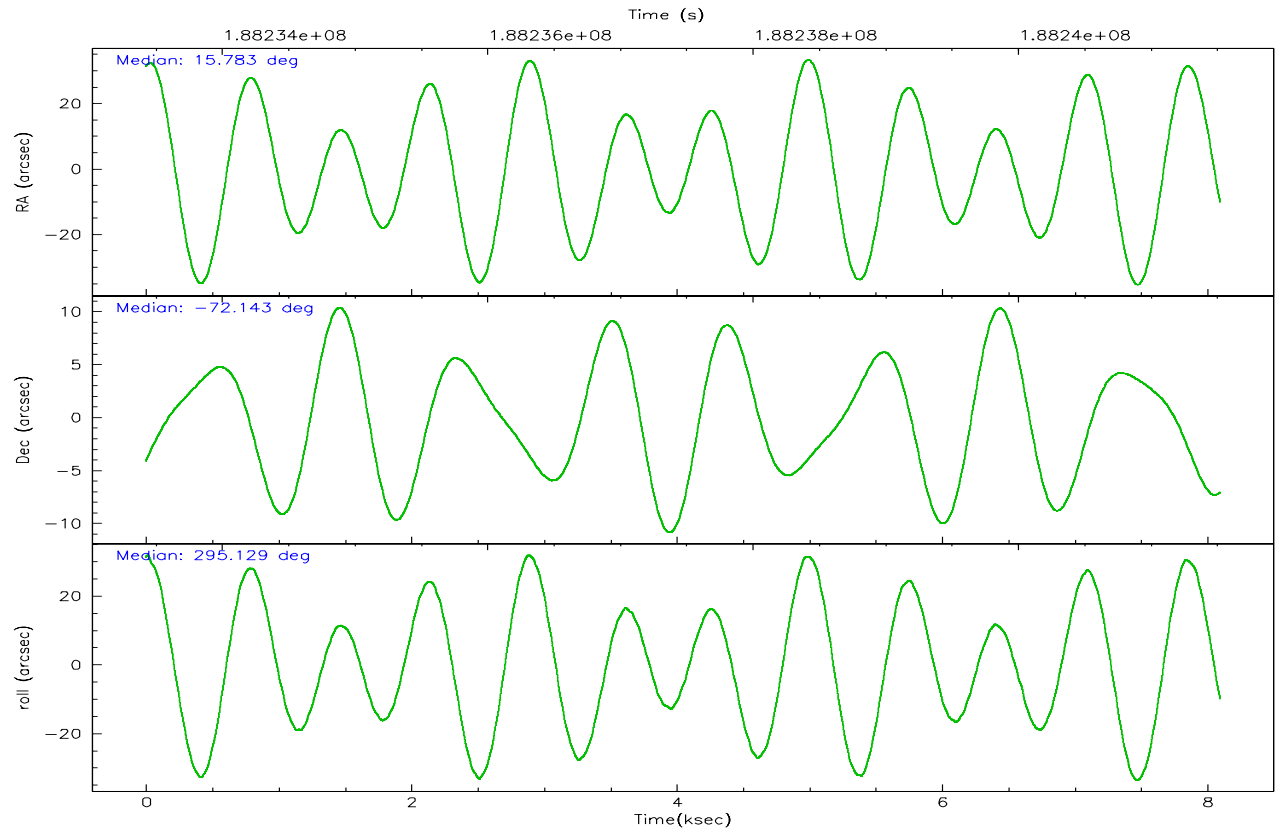
2.2 Compared Parameters

Parameter	Planned	Actual
Instrument	ACIS	ACIS
Detector	ACIS-012367	ACIS-012367
Grating	NONE	NONE
Data mode	VFAINT	VFAINT
Observation mode	POINTING	POINTING
Pointing RA	15.709778	15.78333365029717
Pointing Dec	-72.127331	-72.14290215778252
Pointing Roll	294.858768	295.1374629858112
Window start time	181353664.184000	181353664.184000
Window stop time	189216064.184000	189216064.184000
SIM focus pos (mm)	-0.782348	-0.7809083437167272
SIM defocus (mm)	0	0.001439871863259334
SIM translation stage pos (mm)	-233.592463	-233.5874344608287
SIM translation stage offset (mm)	0	-0.005018542100998502
Observation start time	188233600.184000	188233225.20146
Observation start date	2003-12-19T15:05:36	2003-12-19T15:00:25
Observation end time	188241515.184000	188241830.07684
Observation end date	2003-12-19T17:17:31	2003-12-19T17:23:50
Read mode	TIMED	TIMED

Parameter	Planned	Actual
Obspar format version number	6	6
Obspar file type	PREDICTED	ACTUAL
Obspar update status	NONE	UPDATED
On-chip summing requested	N	N
Subarray requested	NONE	NONE
Alternating exposures requested	N	N
Primary exposure time	0.000000	3.2

2.3 Aspect



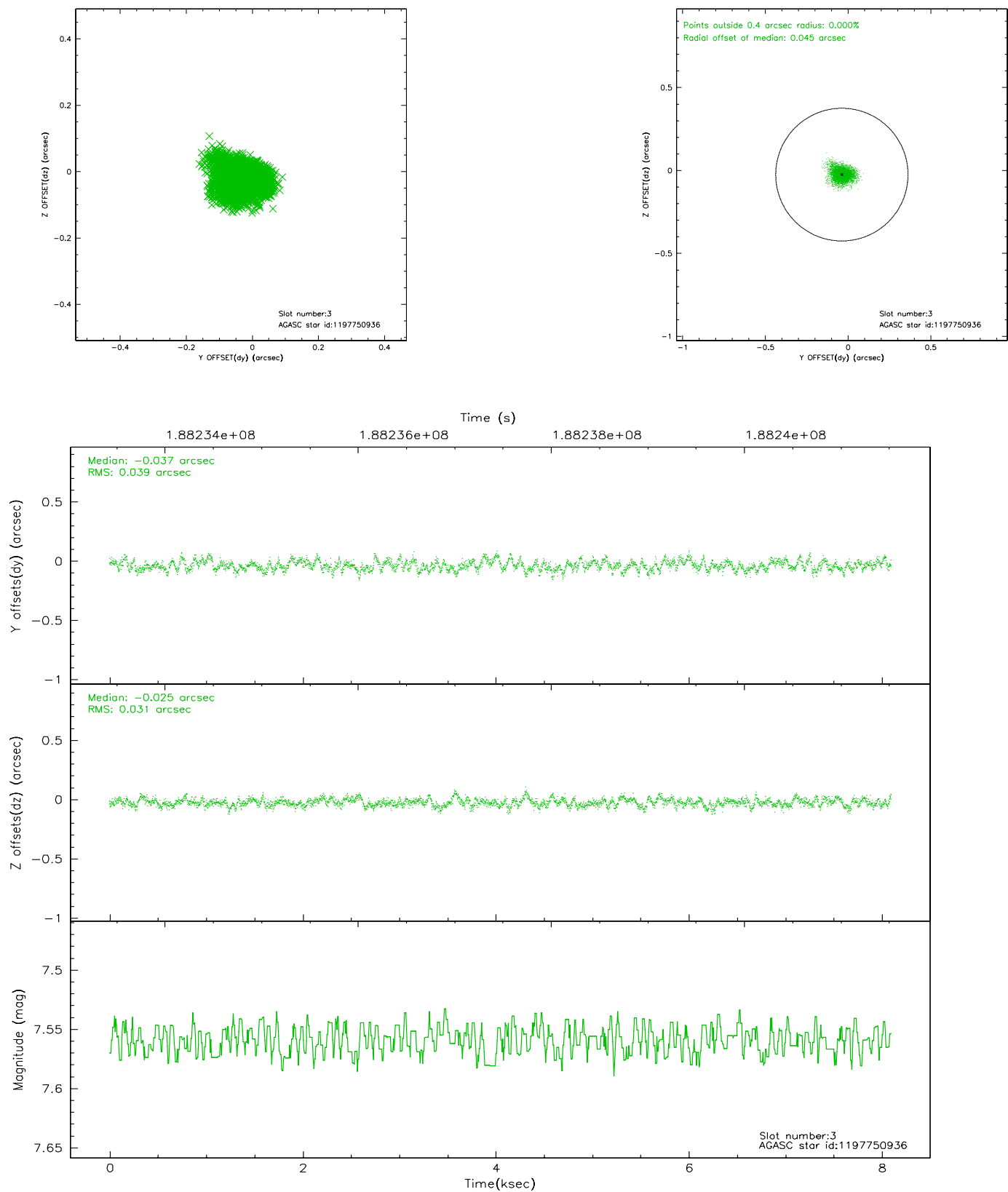


Slot Statistics

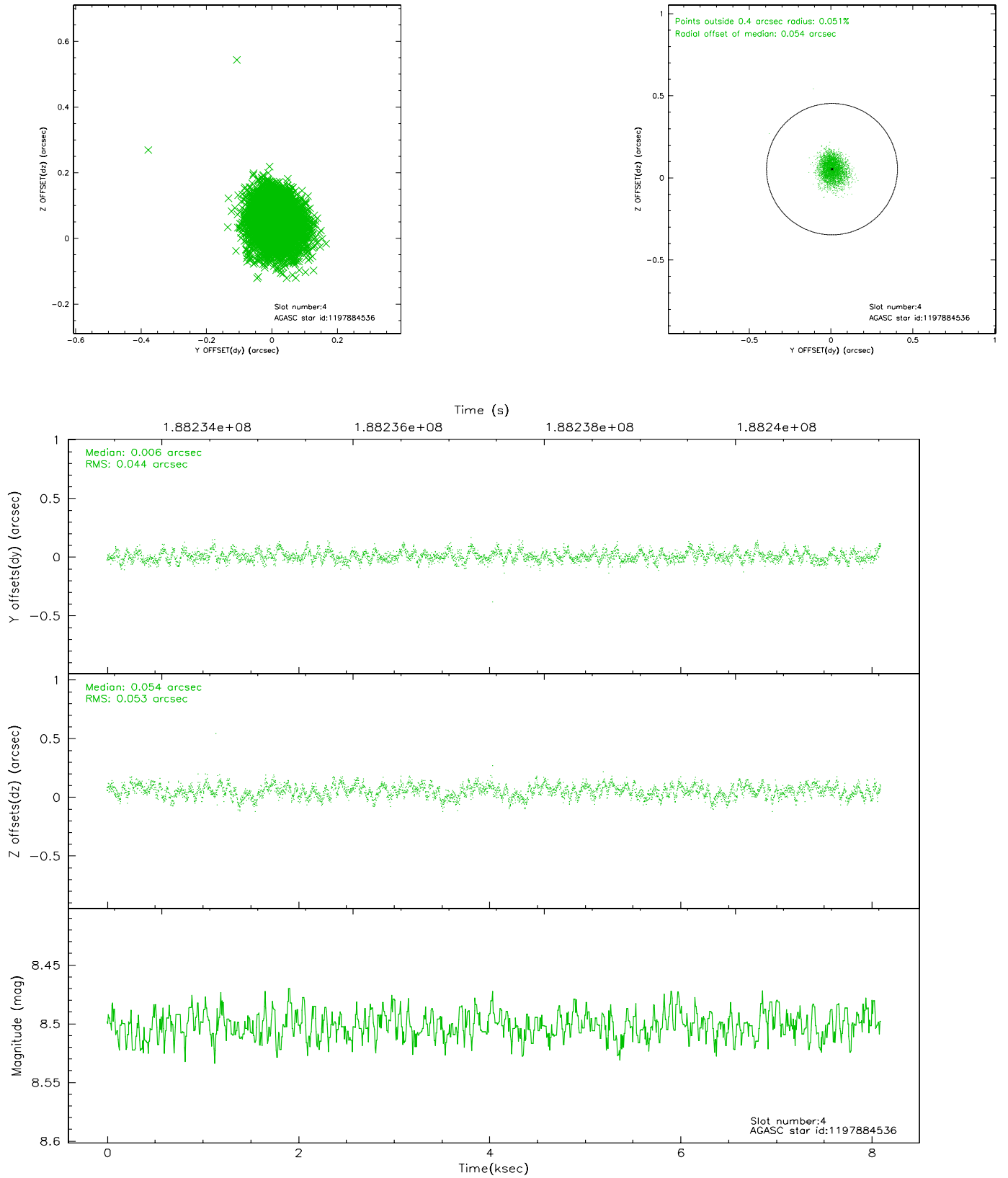
slot	status	id	mag	n_pts	med_dy	med_dz	dr1	dr2	ra	dec	mean_y	mean_z
0	FID	ACIS-I-1	7.24	1975	0.013	0.011	0.006	0.010	0.000000	0.000000	933.54	-833.57
1	FID	ACIS-I-5	7.23	1975	-0.031	0.072	0.005	0.009	0.000000	0.000000	-1814.27	1063.57
2	FID	ACIS-I-6	7.24	1975	-0.074	-0.012	0.007	0.011	0.000000	0.000000	398.19	1708.83
3	GUIDE	1197750936	7.56	3951	-0.037	-0.025	0.052	0.088	15.387940	-71.549550	-2040.39	540.95
4	GUIDE	1197884536	8.50	3951	0.006	0.054	0.073	0.116	17.160729	-71.835289	-252.33	1911.26
5	GUIDE	1197884712	8.30	3950	0.070	-0.131	0.064	0.103	16.087398	-72.252690	584.97	186.16
6	GUIDE	1197885328	7.23	3951	-0.022	0.043	0.054	0.086	16.283090	-71.733943	-1010.18	1181.41
7	GUIDE	1198189696	7.37	3950	-0.021	0.057	0.058	0.096	15.223750	-72.697522	1645.76	-1335.39

2.4 Star Slots

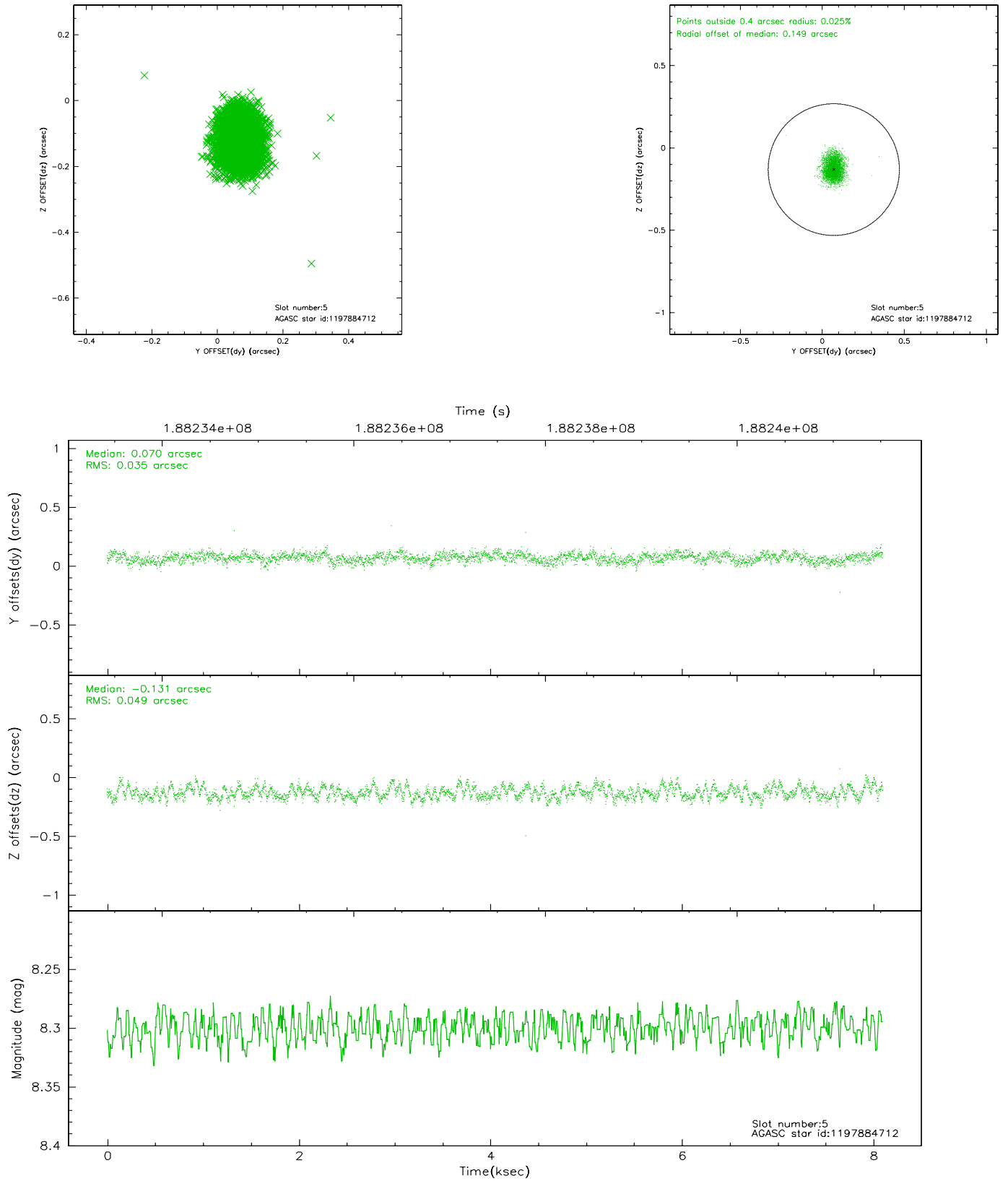
2.4.1 Slot 3



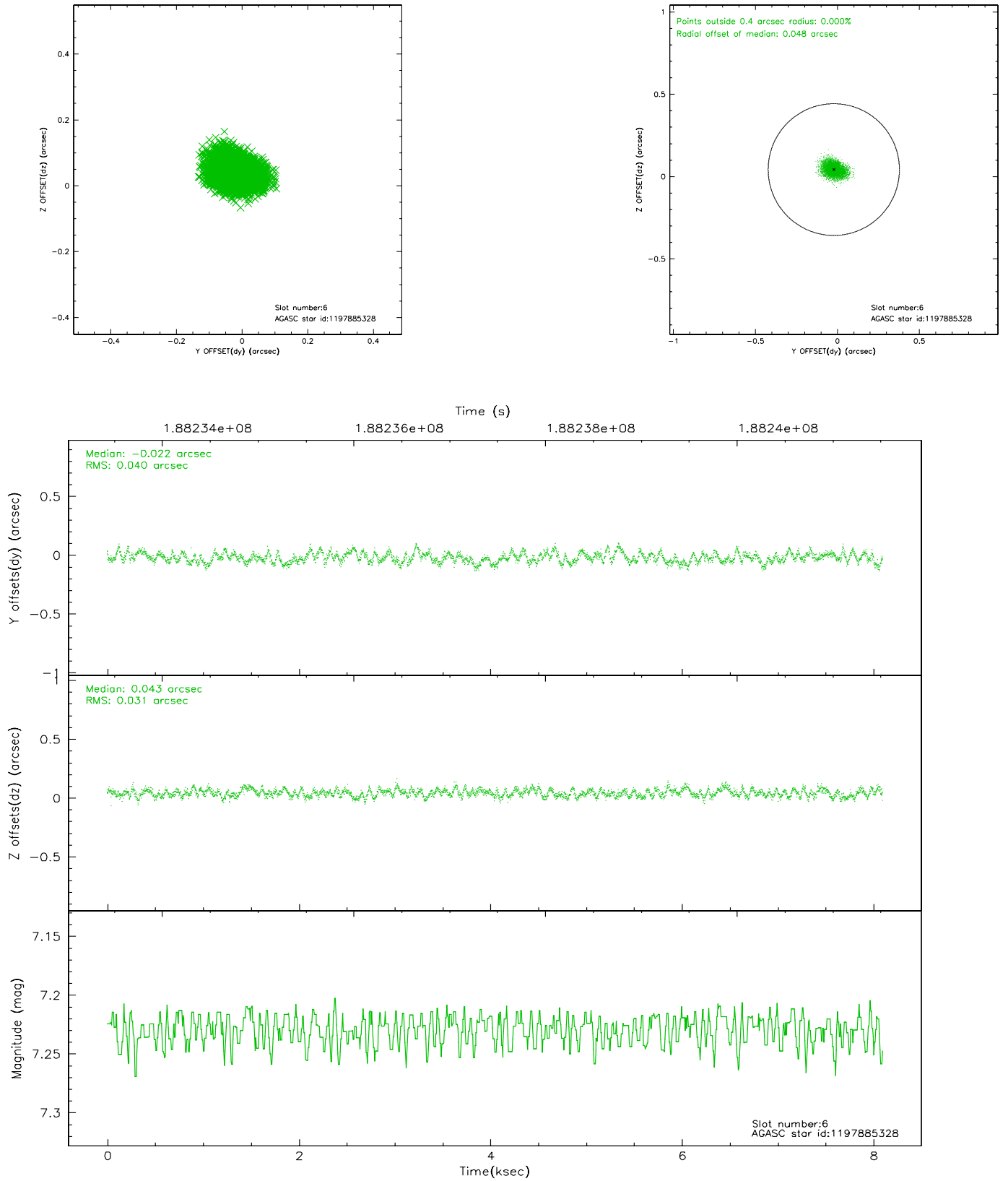
2.4.2 Slot 4



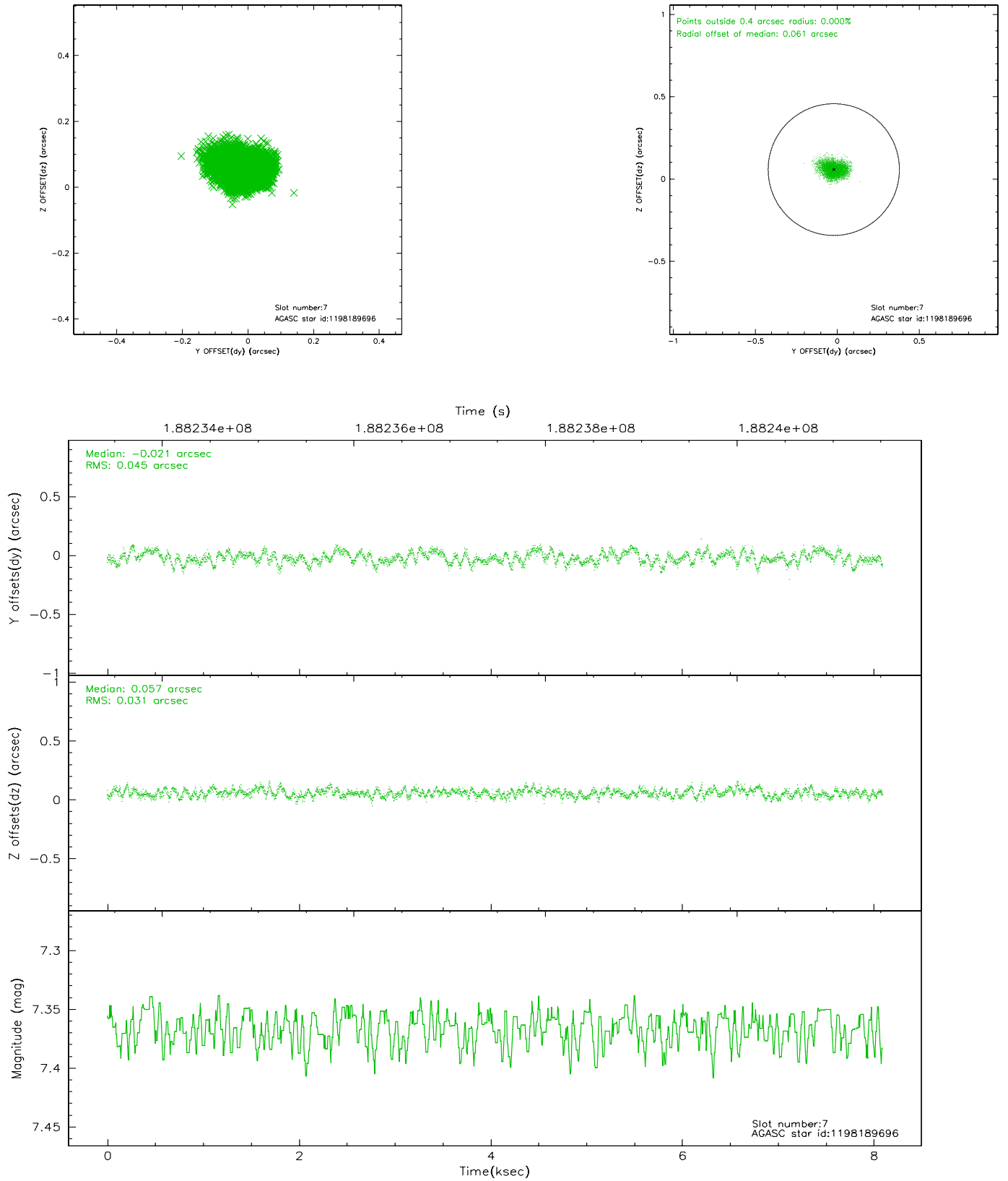
2.4.3 Slot 5



2.4.4 Slot 6

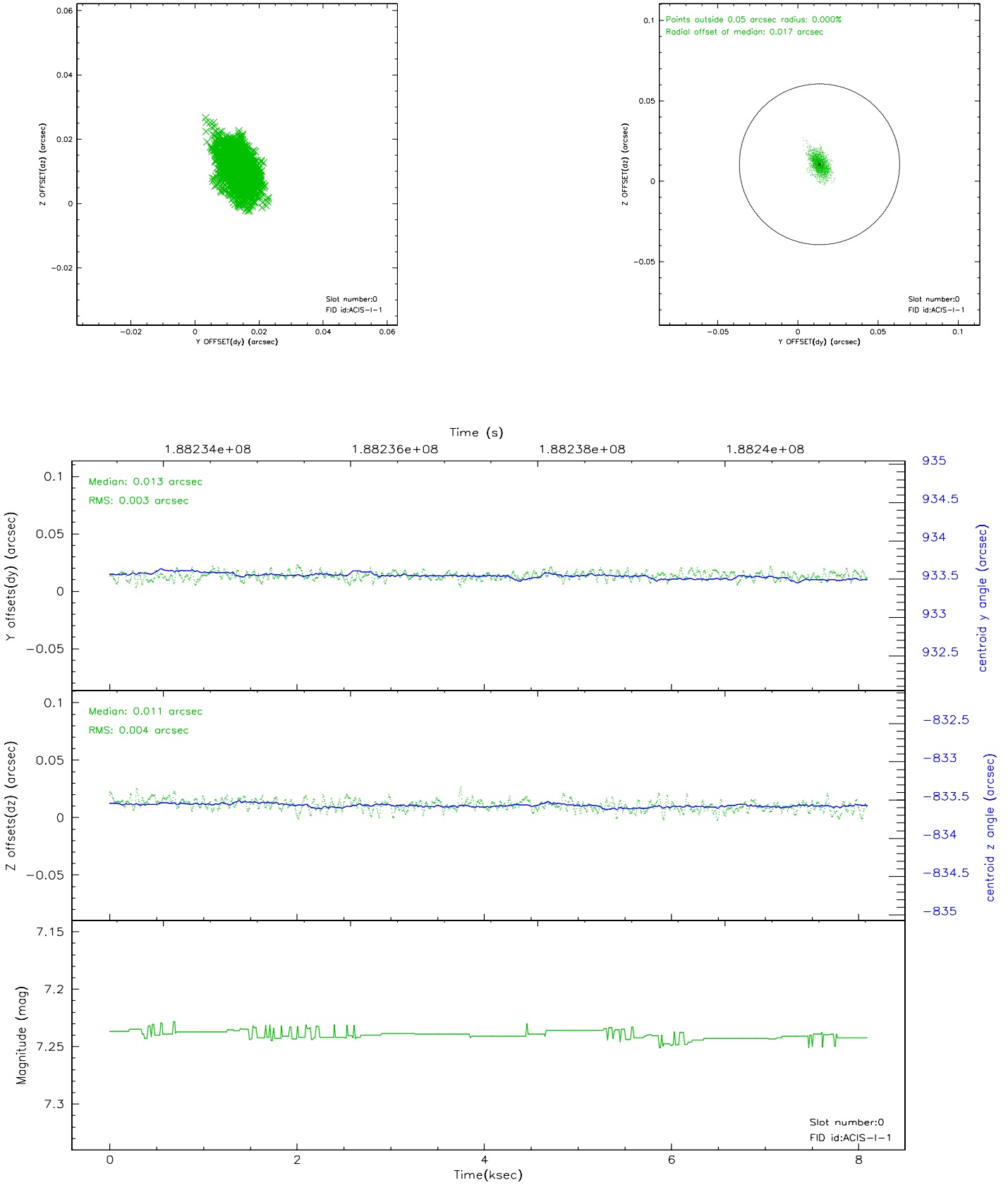


2.4.5 Slot 7

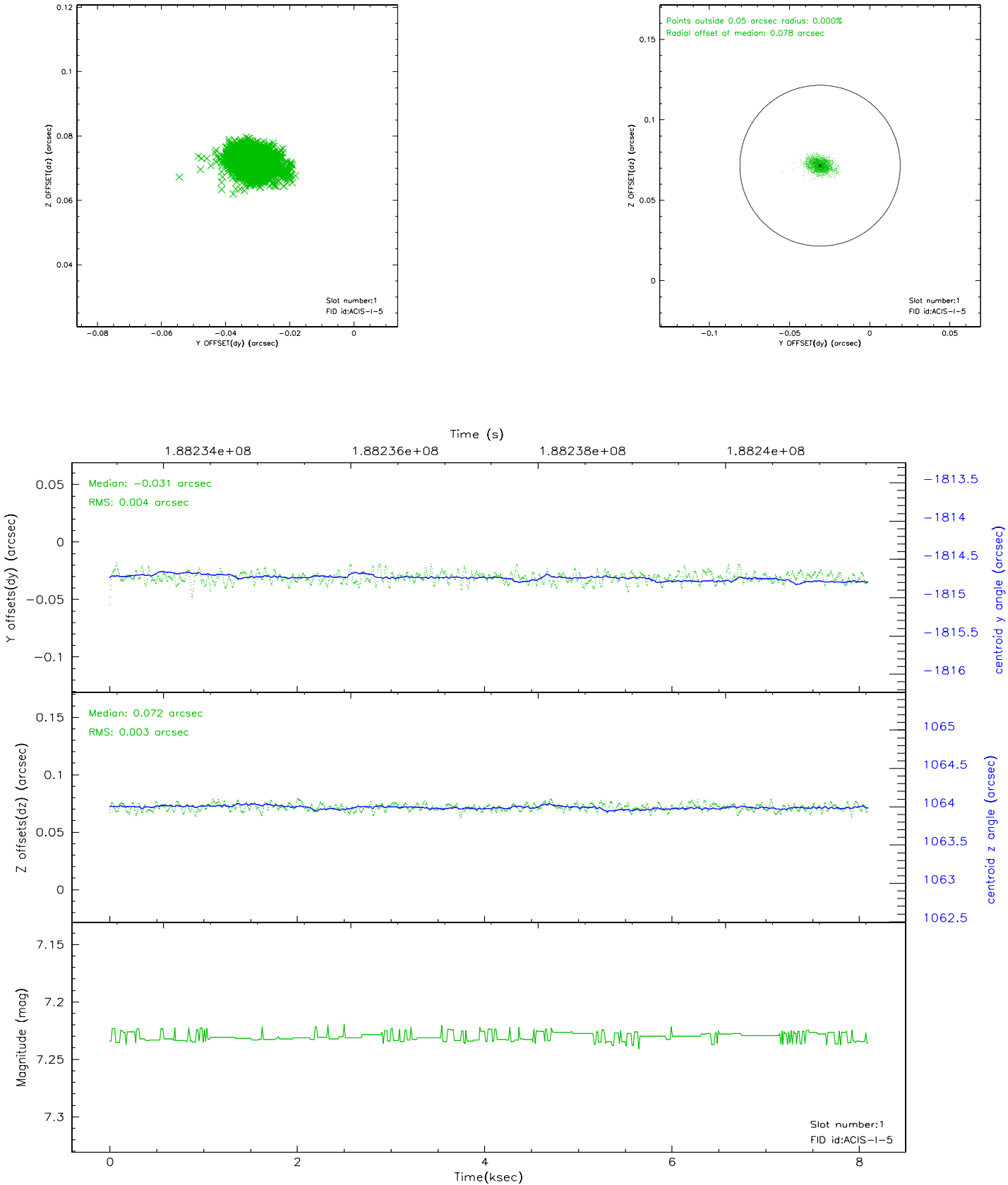


2.5 FID Slots

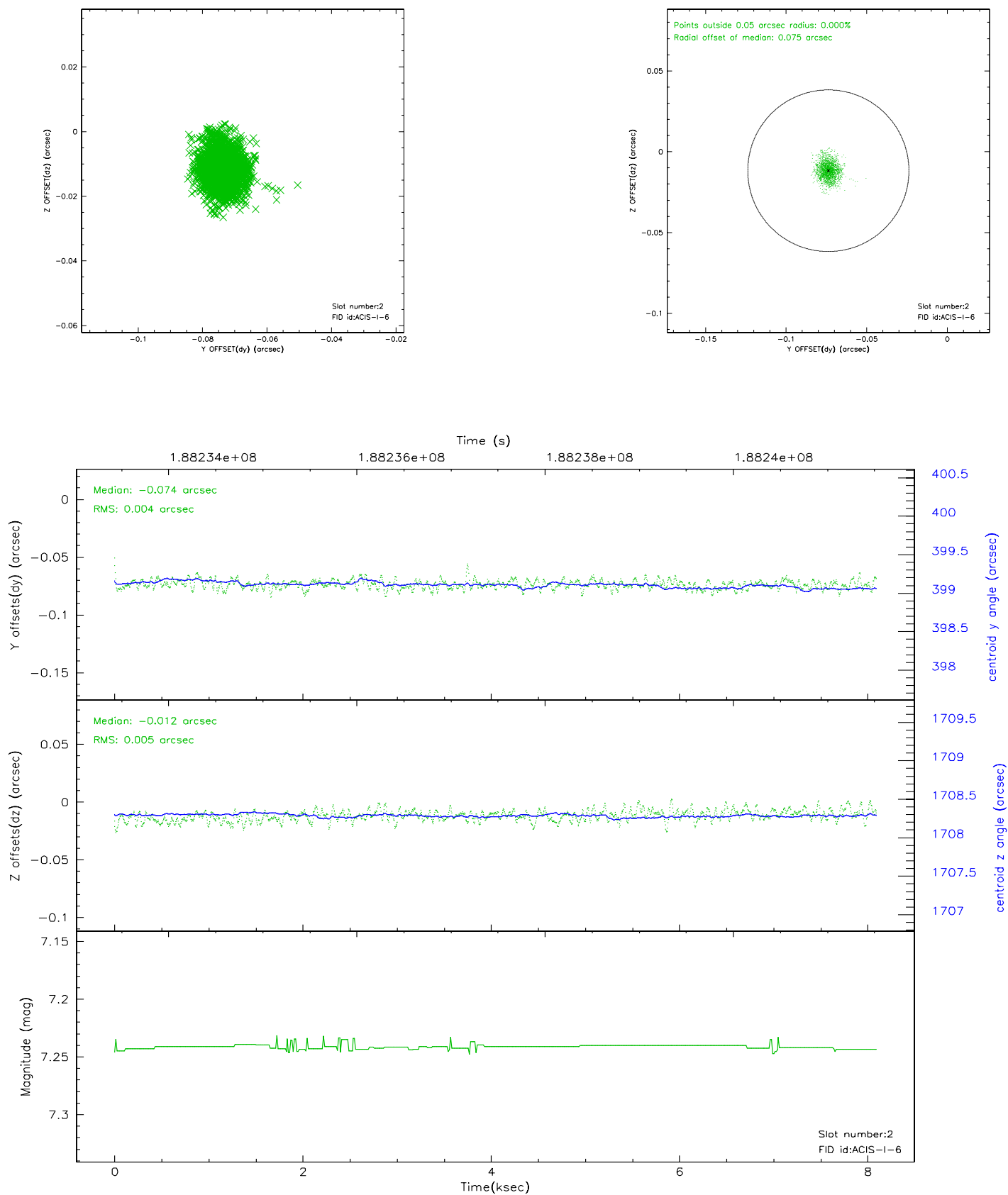
2.5.1 Slot 0



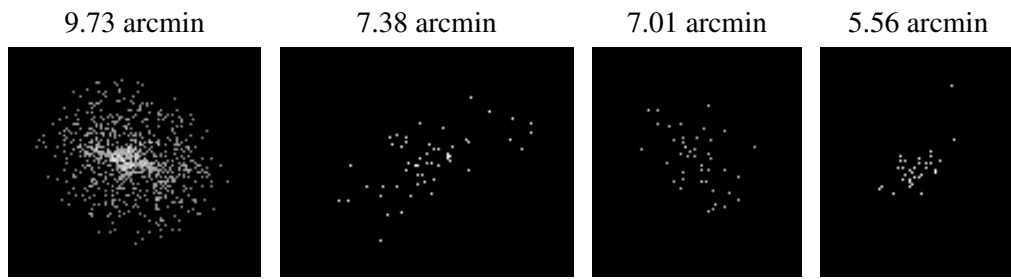
2.5.2 Slot 1



2.5.3 Slot 2



3 Point Sources



A Summary

A.1 Status

V&V Scientist	Jen Lauer
V&V Date (YYYY-MM-DD)	2006.06.22
V&V Edition	1
V&V Disposition and Status	OK
V&V Charge Time	7.673

A.2 Comments

Window constraint met.

presume the cal team carried this one out correctly, but e0102 is on ccd
i3, but label says s3.