

# V&V Reference Report

## L2 ASCDS Version : 7.6.8

Observation 5148 - L2 Version 001  
Chandra X-Ray Center

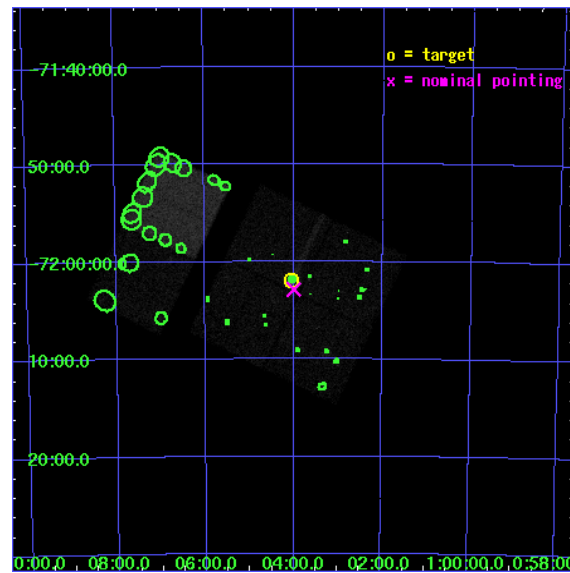
L2 Processing Date : Jun 22 2006

## Contents

<b>1</b>	<b>Front</b>	<b>2</b>
<b>2</b>	<b>OBI</b>	<b>3</b>
2.1	OBI . . . . .	3
2.1.1	Images . . . . .	3
2.1.2	Bias . . . . .	3
2.1.3	Parameters . . . . .	4
2.1.4	Events . . . . .	4
2.2	Compared Parameters . . . . .	5
2.3	Aspect . . . . .	6
2.4	Star Slots . . . . .	9
2.4.1	Slot 3 . . . . .	9
2.4.2	Slot 4 . . . . .	10
2.4.3	Slot 5 . . . . .	11
2.4.4	Slot 6 . . . . .	12
2.4.5	Slot 7 . . . . .	13
2.5	FID Slots . . . . .	14
2.5.1	Slot 0 . . . . .	14
2.5.2	Slot 1 . . . . .	15
2.5.3	Slot 2 . . . . .	16
<b>3</b>	<b>Point Sources</b>	<b>17</b>
<b>A</b>	<b>Summary</b>	<b>18</b>
A.1	Status . . . . .	18
A.2	Comments . . . . .	18

# 1 Front

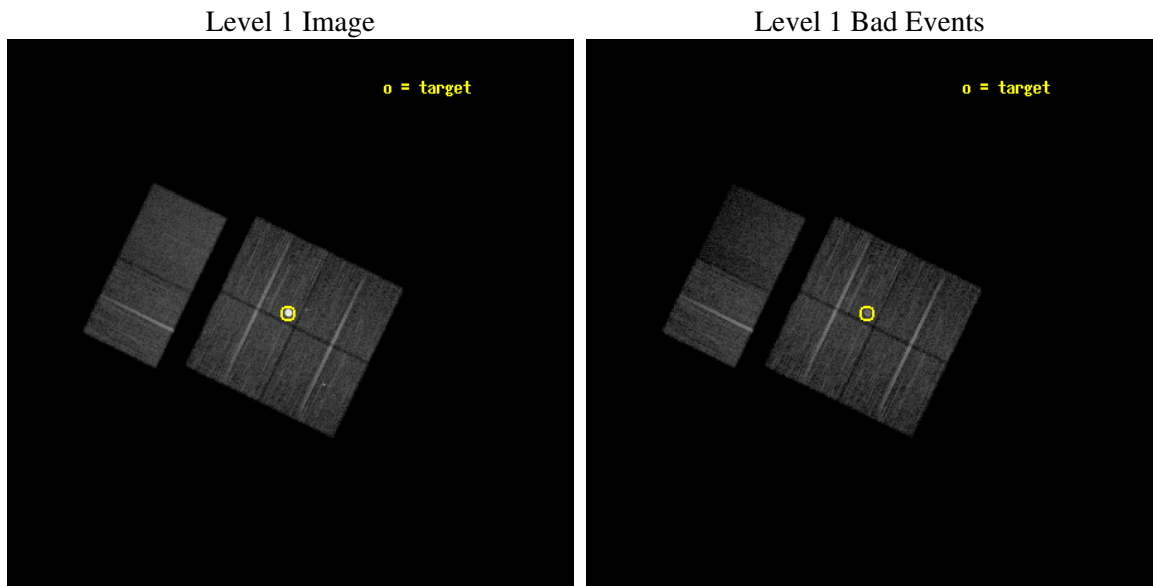
seq_num	590346
obs_id	5148
title	AO5A ACIS-I Calibration Observations of E0102-72
observer	Dr. CXC Calibration
object	E0102-72[I3,-120,-0.5,0.5,0]
dtcycle	0
cycle	P
ra_targ	16.01
dec_targ	-72.032028
ra_nom	15.997974269515
dec_nom	-72.047767006185
roll_nom	295.78700789087
revision	2
ontime	19529.517986715
livetime	19282.223470703
ontime0	19535.999927223
ontime1	19529.518016607
ontime2	19535.999927223
ontime3	19529.517986715
ontime6	19535.999927223
ontime7	19532.758956939
l2events	146070



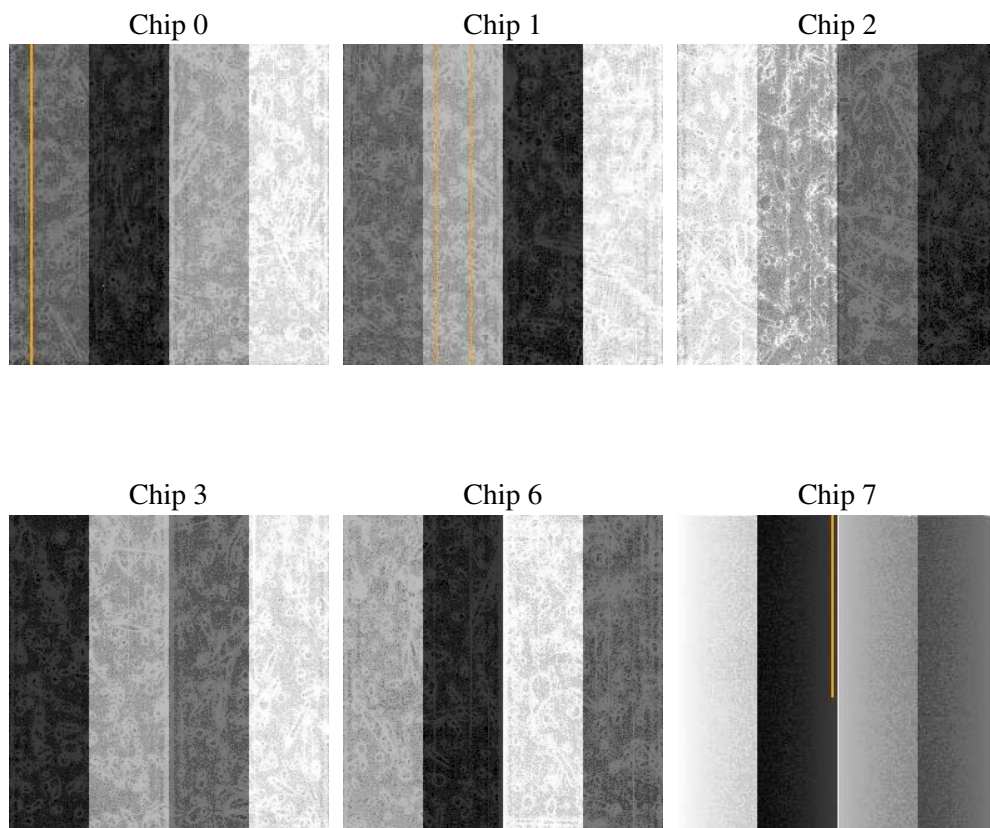
## 2 OBI

### 2.1 OBI

#### 2.1.1 Images



#### 2.1.2 Bias



### 2.1.3 Parameters

obi_num	0
ascdsver	7.6.8
caldbver	3.2.2
date	2006-06-22T04:56:50
revision	2

sched_exp_time	19781.000000
ontime	19533.514598697
ontime0	19539.996539205
ontime1	19533.514628589
ontime2	19539.996539205
ontime3	19533.514598697
ontime6	19539.996539205
ontime7	19536.75558883
l1events	614947

### 2.1.4 Events

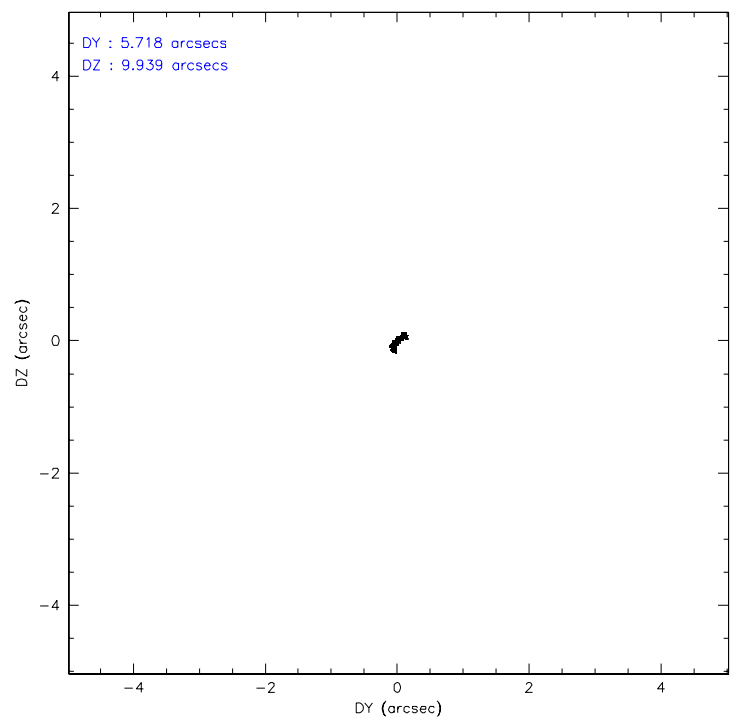
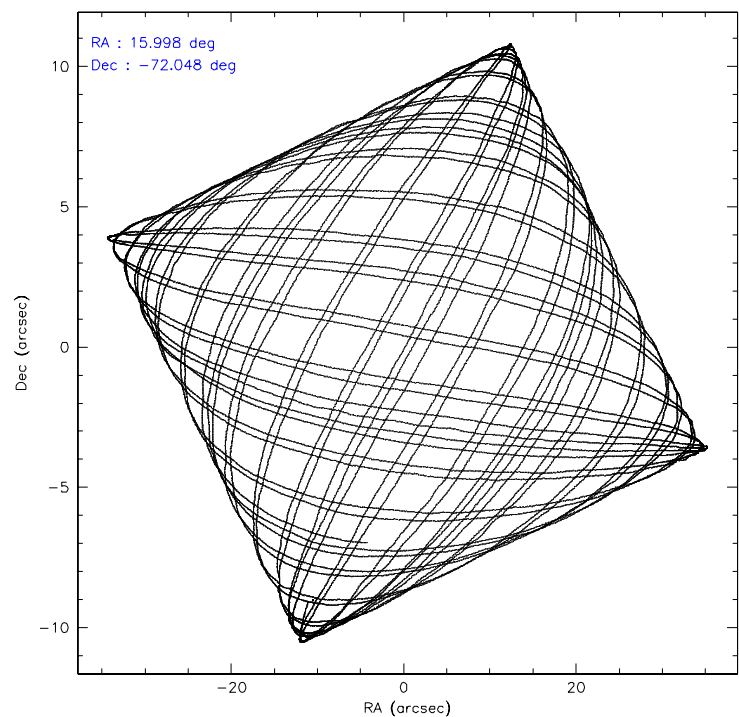
	ccd 0	ccd 1	ccd 2	ccd 3	ccd 6	ccd 7
level 1 events	87861	84430	97953	157939	98023	88741
rejected events	77166	74055	87628	83876	88452	48190
rejected %	87%	87%	89%	53%	90%	54%

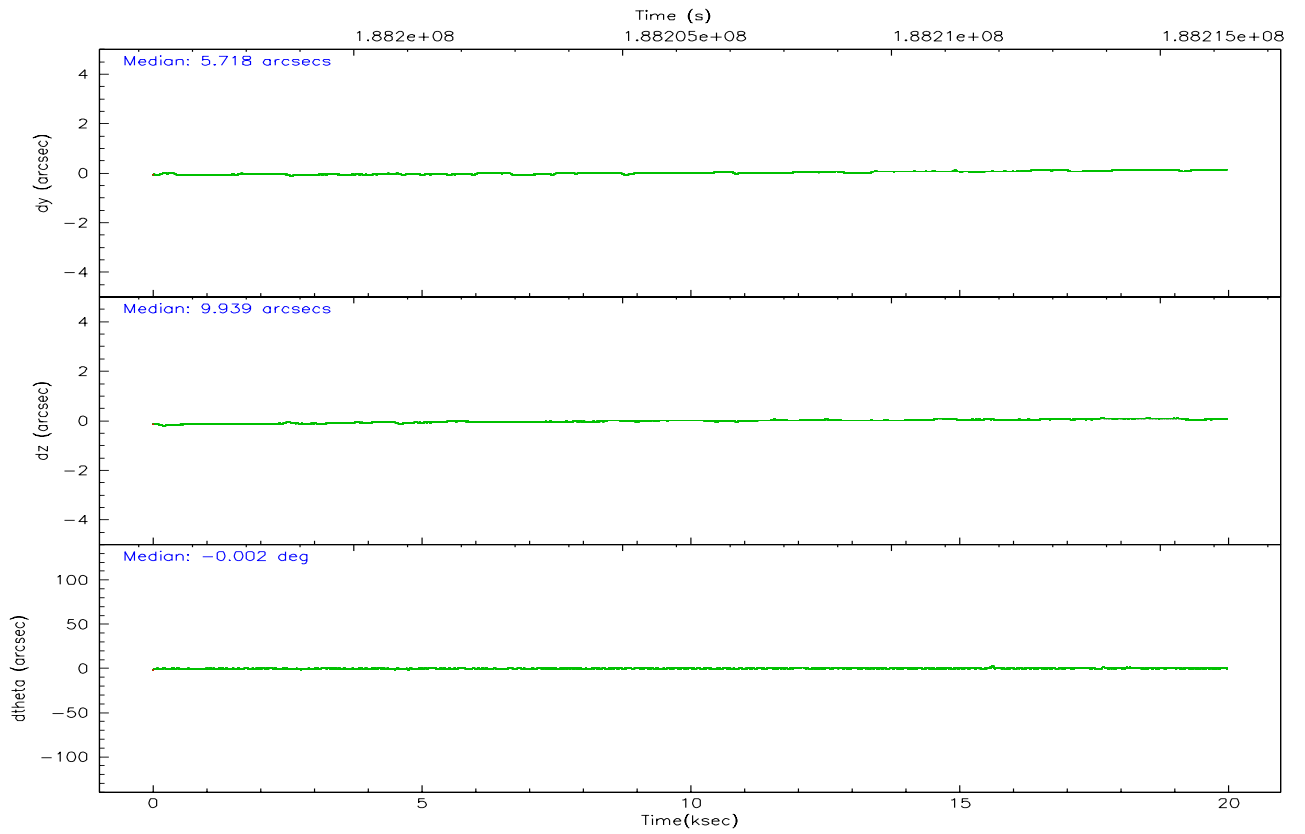
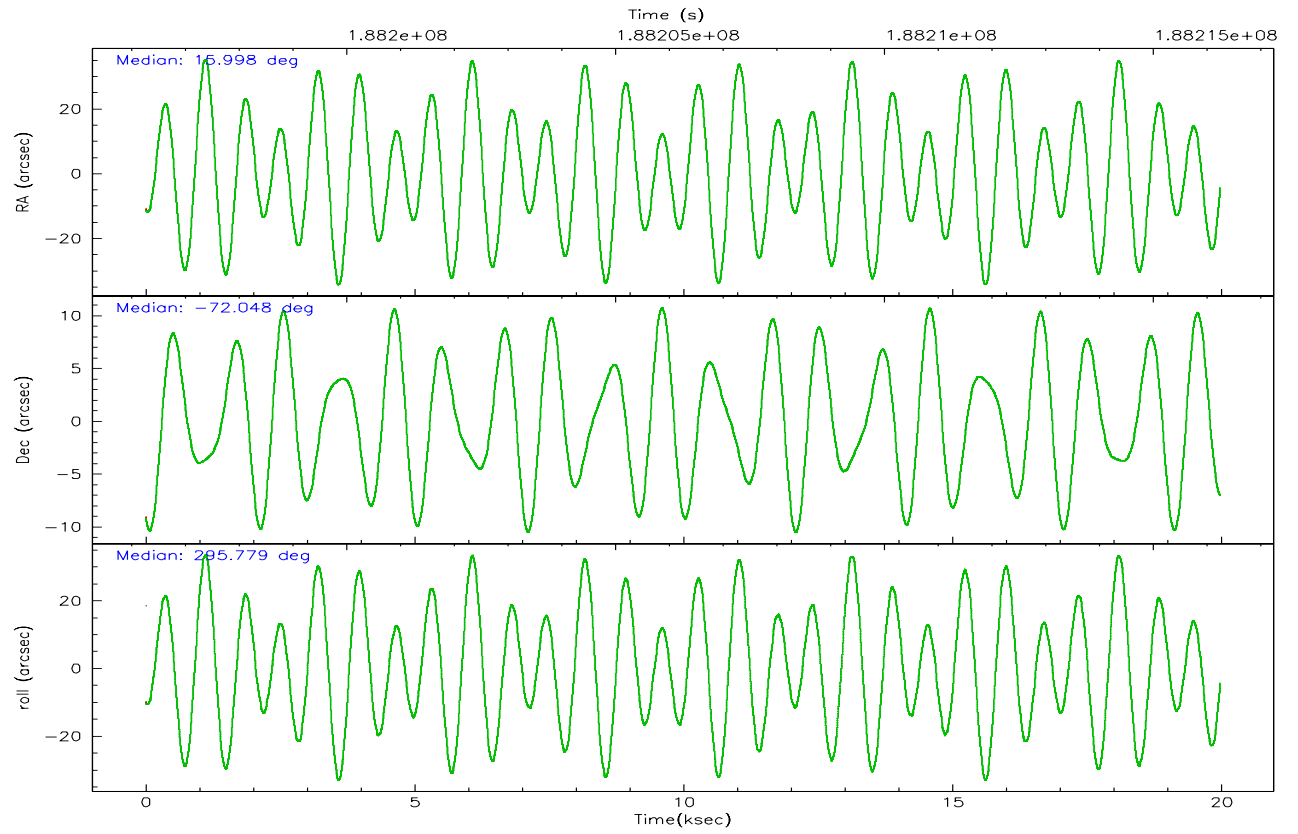
	ccd 0	ccd 1	ccd 2	ccd 3	ccd 6	ccd 7
grade 0 events	4602	4127	4566	62141	3450	2773
	5%	4%	4%	39%	3%	3%
grade 1 events	46	37	53	690	45	61
	0%	0%	0%	0%	0%	0%
grade 2 events	2320	2091	2120	5951	2060	10244
	2%	2%	2%	3%	2%	11%
grade 3 events	1141	1160	985	2035	1019	2594
	1%	1%	1%	1%	1%	2%
grade 4 events	982	1103	1045	2002	1055	2540
	1%	1%	1%	1%	1%	2%
grade 5 events	2791	3006	2585	3227	3318	7129
	3%	3%	2%	2%	3%	8%
grade 6 events	1651	1896	1614	1949	1990	22406
	1%	2%	1%	1%	2%	25%
grade 7 events	74328	71010	84985	79944	85086	40994
	84%	84%	86%	50%	86%	46%

## 2.2 Compared Parameters

Parameter	Planned	Actual	Parameter	Planned	Actual
Instrument	ACIS	ACIS	Obspar format version number	6	6
Detector	ACIS-012367	ACIS-012367	Obspar file type	PREDICTED	ACTUAL
Grating	NONE	NONE	Obspar update status	NONE	UPDATED
Data mode	VFAINT	VFAINT	On-chip summing requested	N	N
Observation mode	POINTING	POINTING	Subarray requested	NONE	NONE
Pointing RA	15.924417	15.99797426951542	Alternating exposures requested	N	N
Pointing Dec	-72.032447	-72.04776700618457	Primary exposure time	0.000000	3.2
Pointing Roll	295.508352	295.7870078908718			
Window start time	181353664.184000	181353664.184000			
Window stop time	189216064.184000	189216064.184000			
SIM focus pos (mm)	-0.782348	-0.7809083437167272			
SIM defocus (mm)	0	0.001439871863259334			
SIM translation stage pos (mm)	-233.592463	-233.5874344608287			
SIM translation stage offset (mm)	0	-0.005018542100998502			
Observation start time	188196463.184000	188196087.39985			
Observation start date	2003-12-19T04:46:39	2003-12-19T04:41:27			
Observation end time	188216244.184000	188216378.30073			
Observation end date	2003-12-19T10:16:20	2003-12-19T10:19:38			
Read mode	TIMED	TIMED			

## 2.3 Aspect





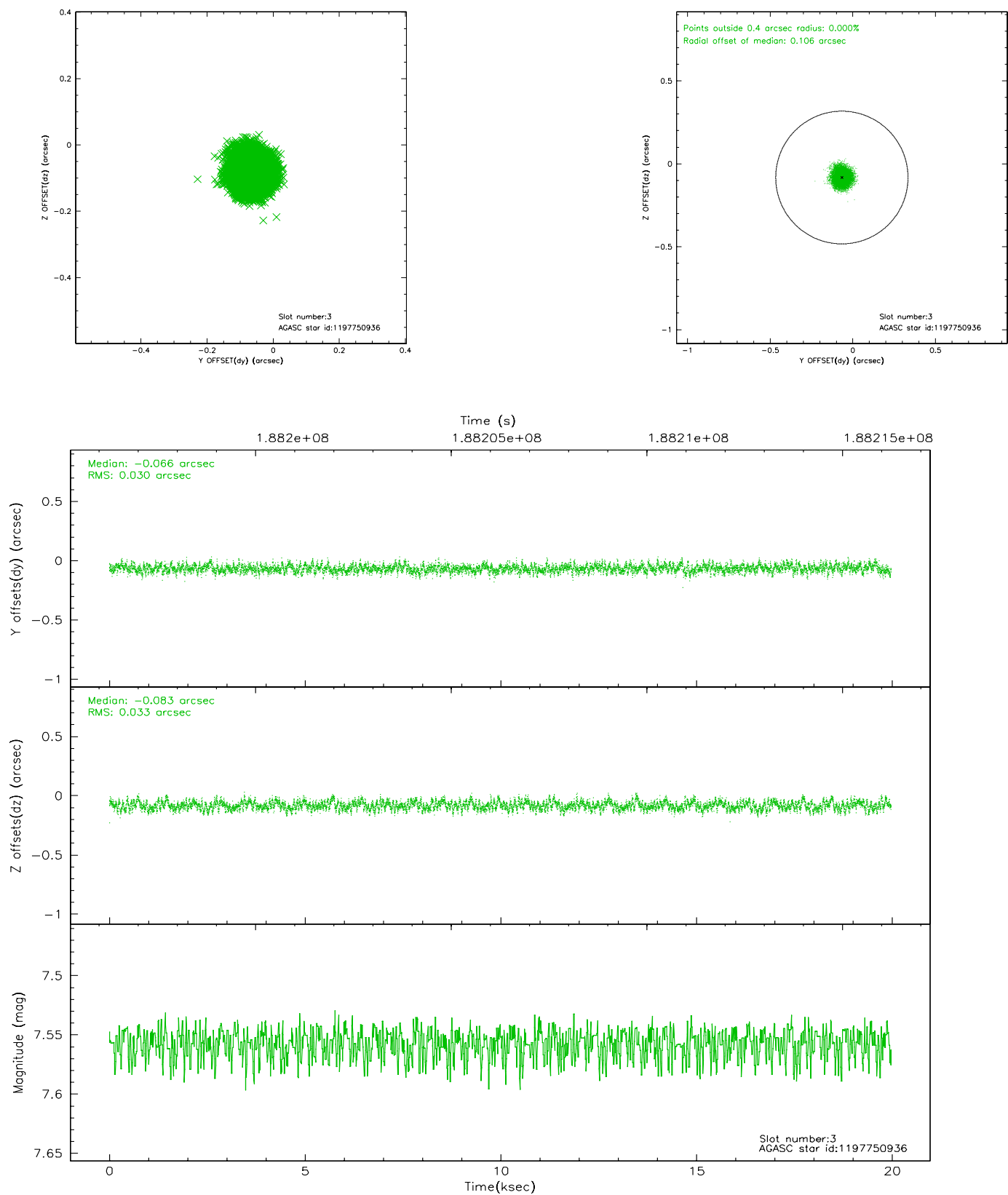
### Slot Statistics

slot	status	id	mag	n_pts	med_dy	med_dz	dr1	dr2	ra	dec	mean_y	mean_z
0	FID	ACIS-I-1	7.24	4870	-0.014	0.048	0.006	0.011	0.000000	0.000000	933.97	-833.35
1	FID	ACIS-I-5	7.23	4869	-0.114	0.024	0.006	0.010	0.000000	0.000000	-1814.14	1064.02
2	FID	ACIS-I-6	7.25	4869	0.037	-0.002	0.007	0.011	0.000000	0.000000	399.36	1708.71
3	GUIDE	1197750936	7.56	9740	-0.066	-0.083	0.048	0.075	15.387940	-71.549550	-1829.44	195.61
4	GUIDE	1197884536	8.50	9735	0.070	0.058	0.067	0.107	17.160729	-71.835289	-30.37	1551.93
5	GUIDE	1197884712	8.30	9737	0.096	0.050	0.063	0.101	16.087398	-72.252690	793.19	-179.66
6	GUIDE	1197885328	7.22	9740	-0.002	-0.036	0.074	0.114	16.283090	-71.733943	-794.31	827.96
7	GUIDE	1198189696	7.38	9738	-0.094	0.010	0.063	0.095	15.223750	-72.697522	1842.15	-1709.53

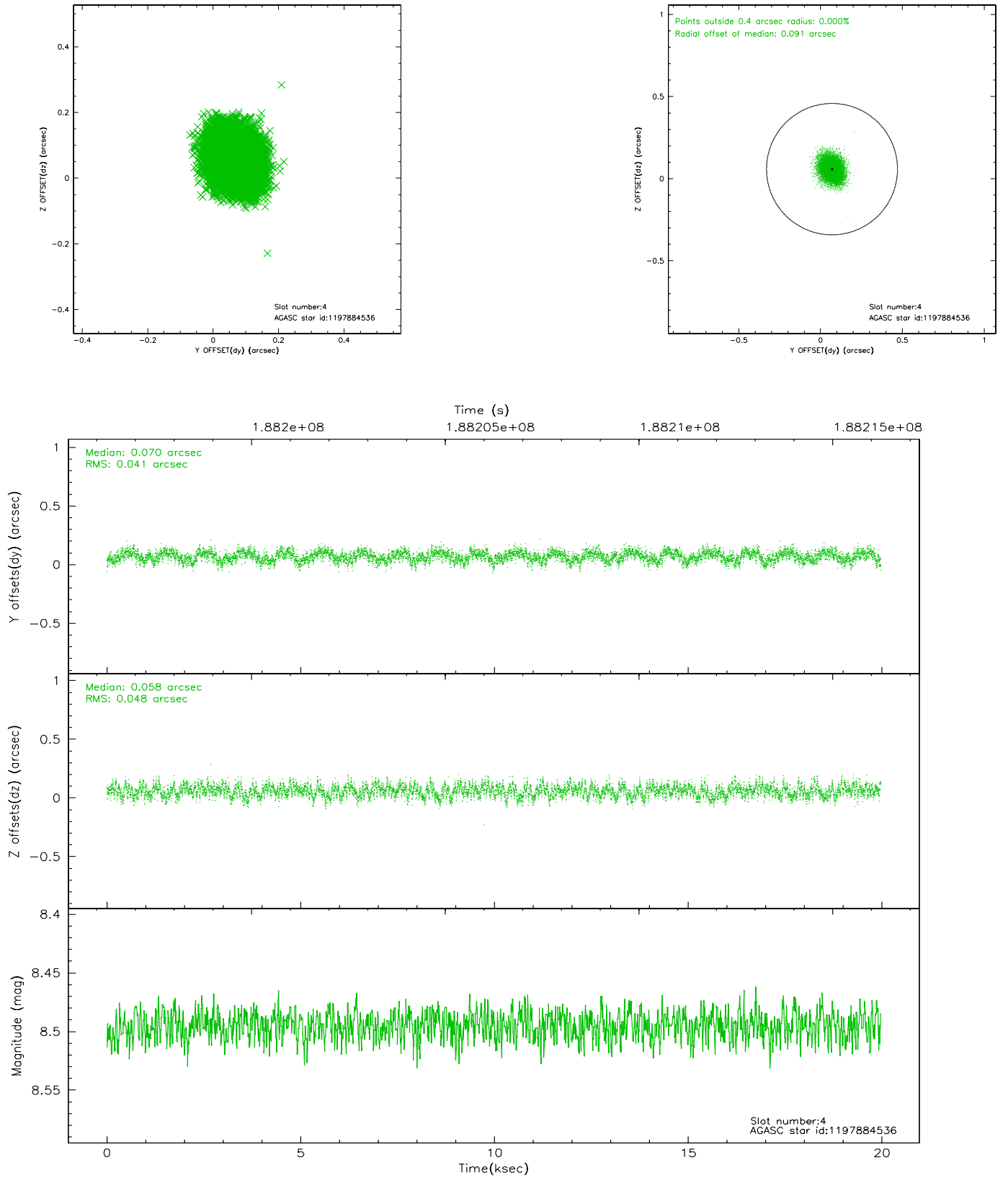


## 2.4 Star Slots

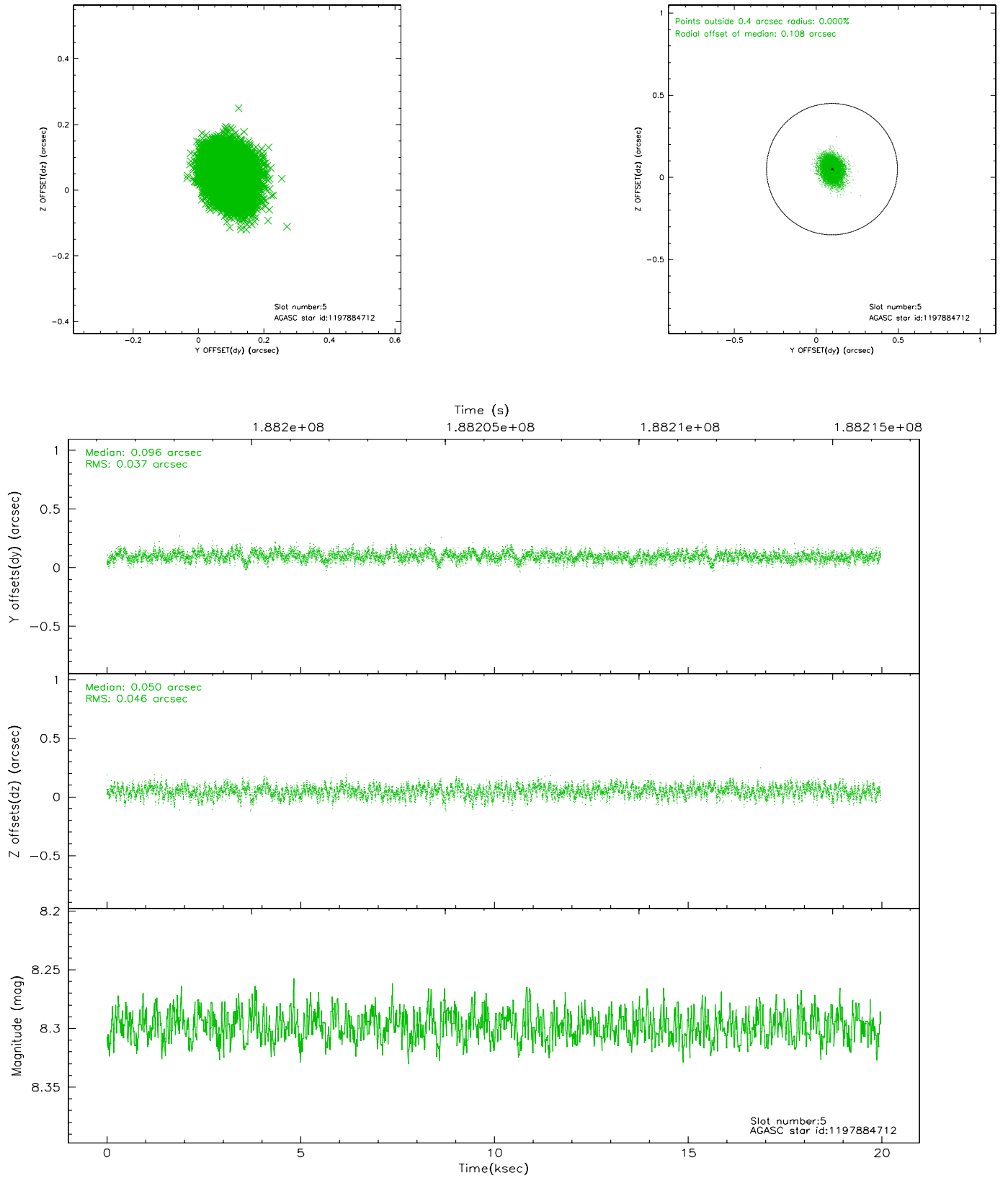
### 2.4.1 Slot 3



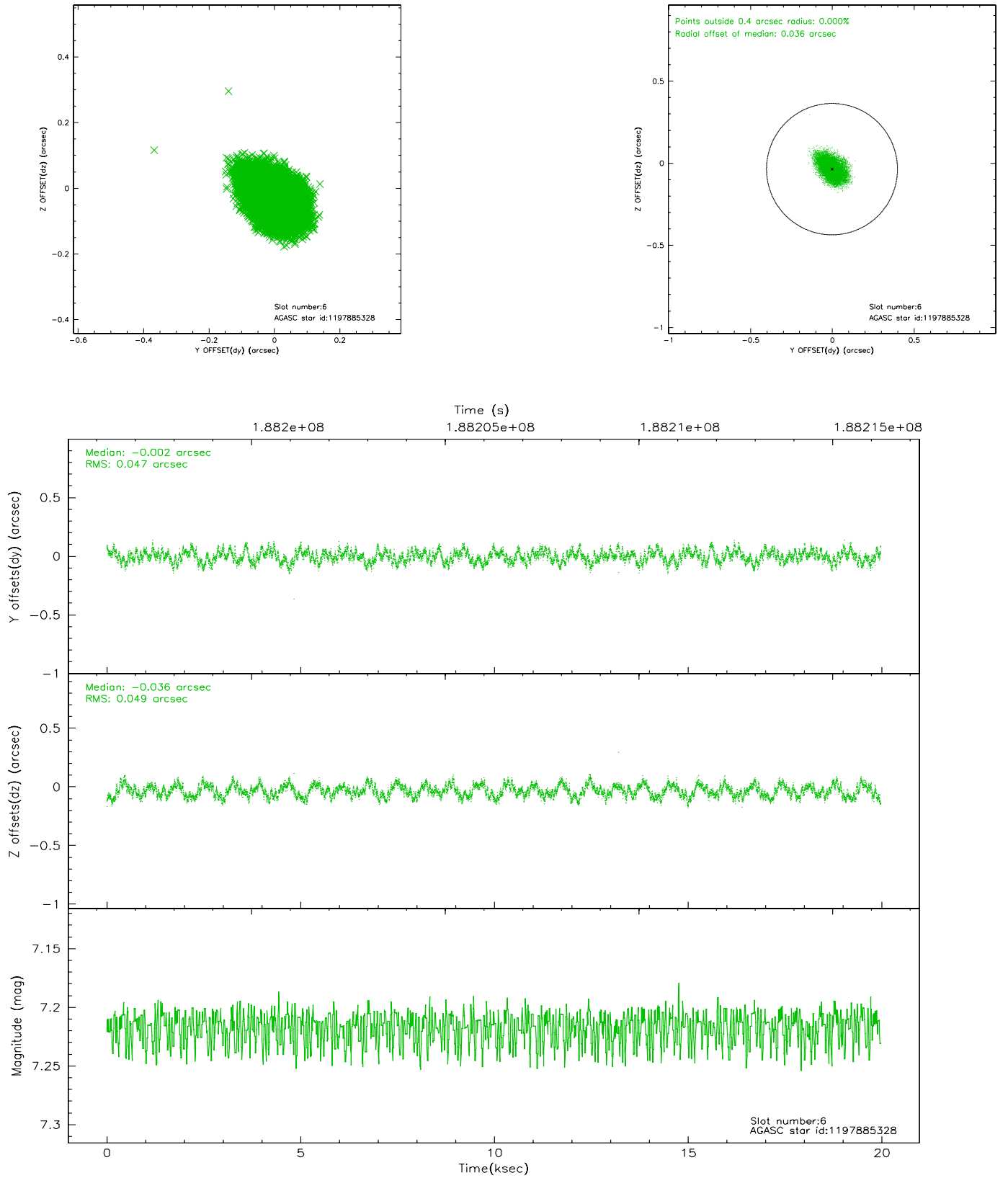
## 2.4.2 Slot 4



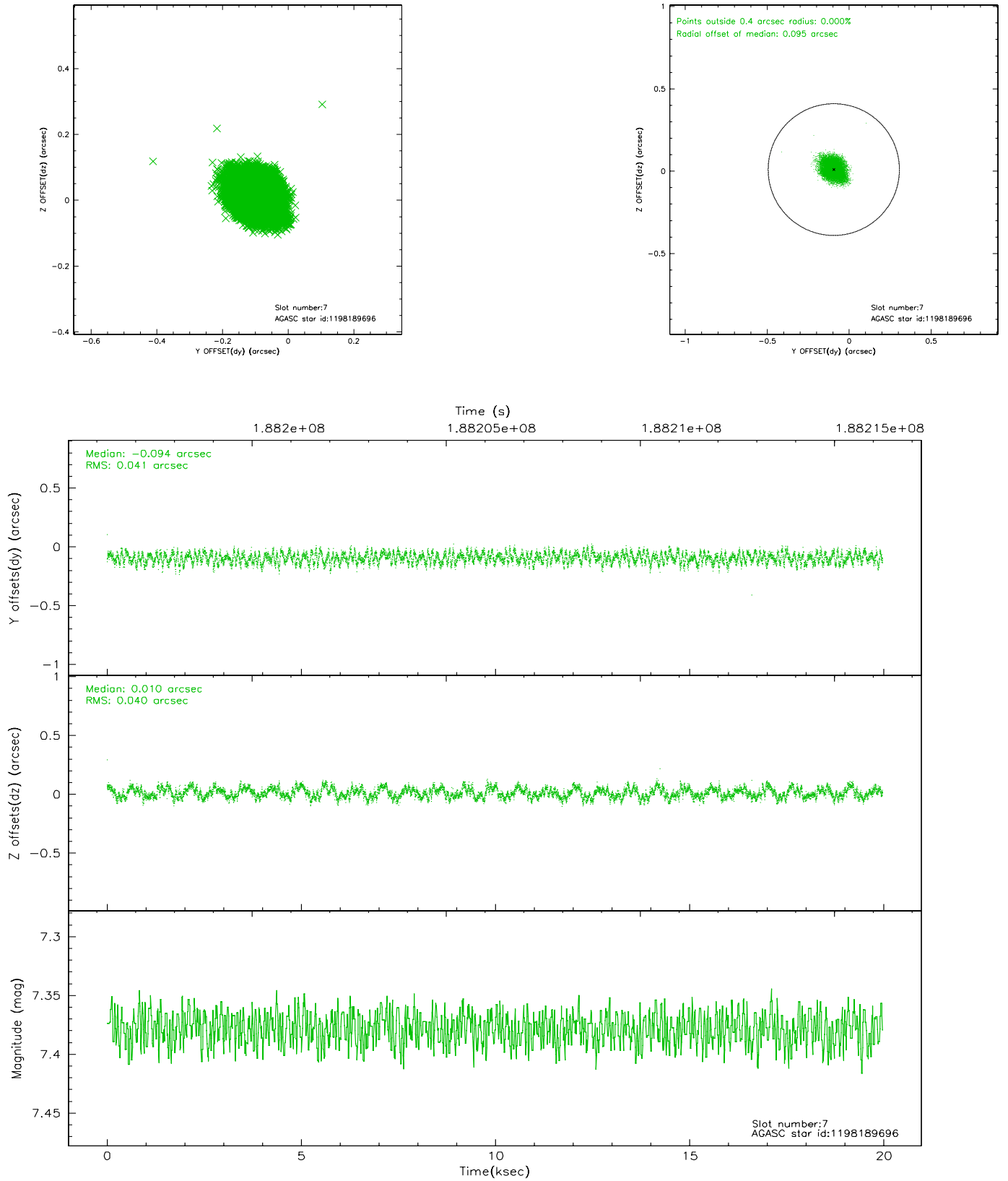
### 2.4.3 Slot 5



## 2.4.4 Slot 6

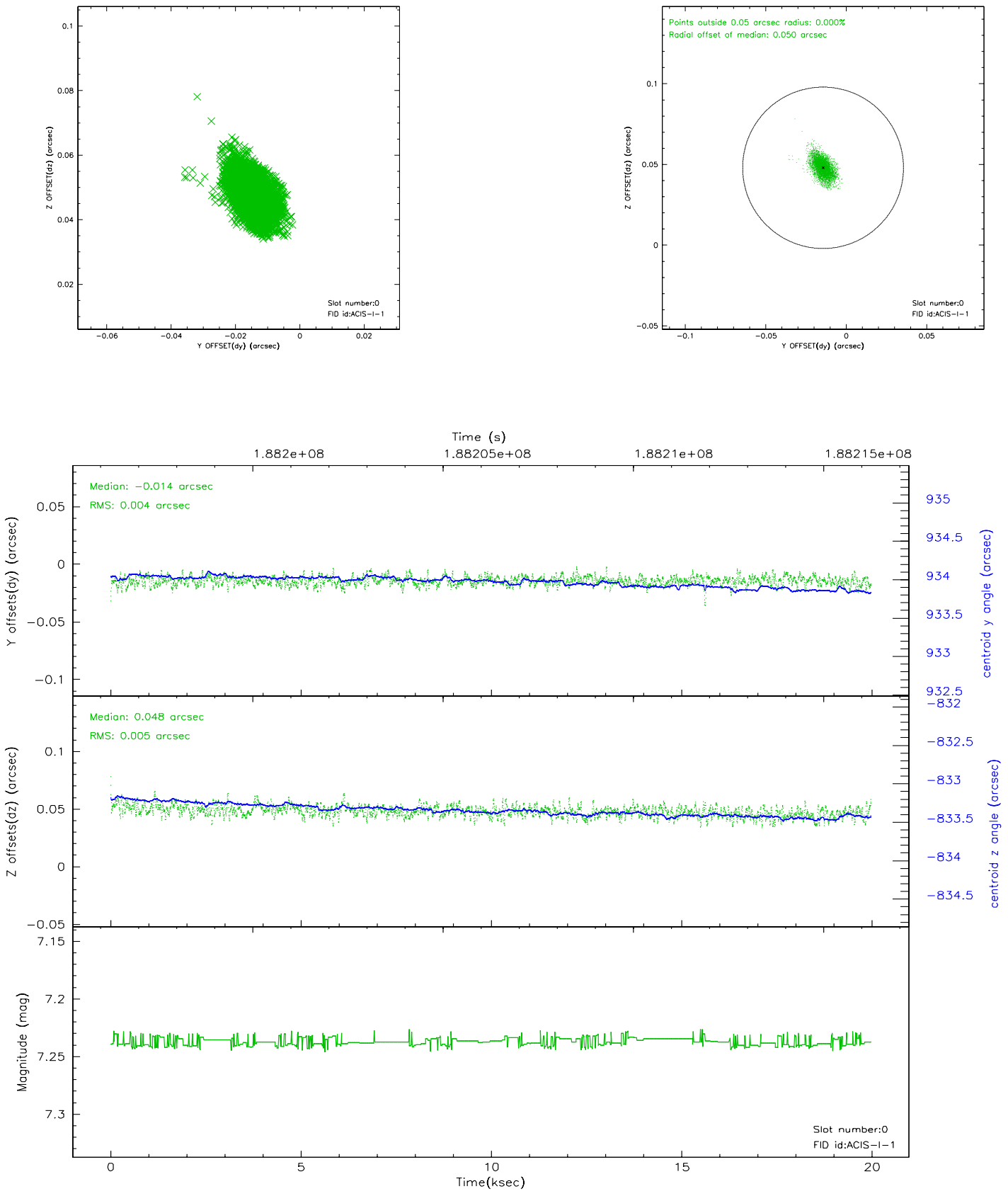


## 2.4.5 Slot 7

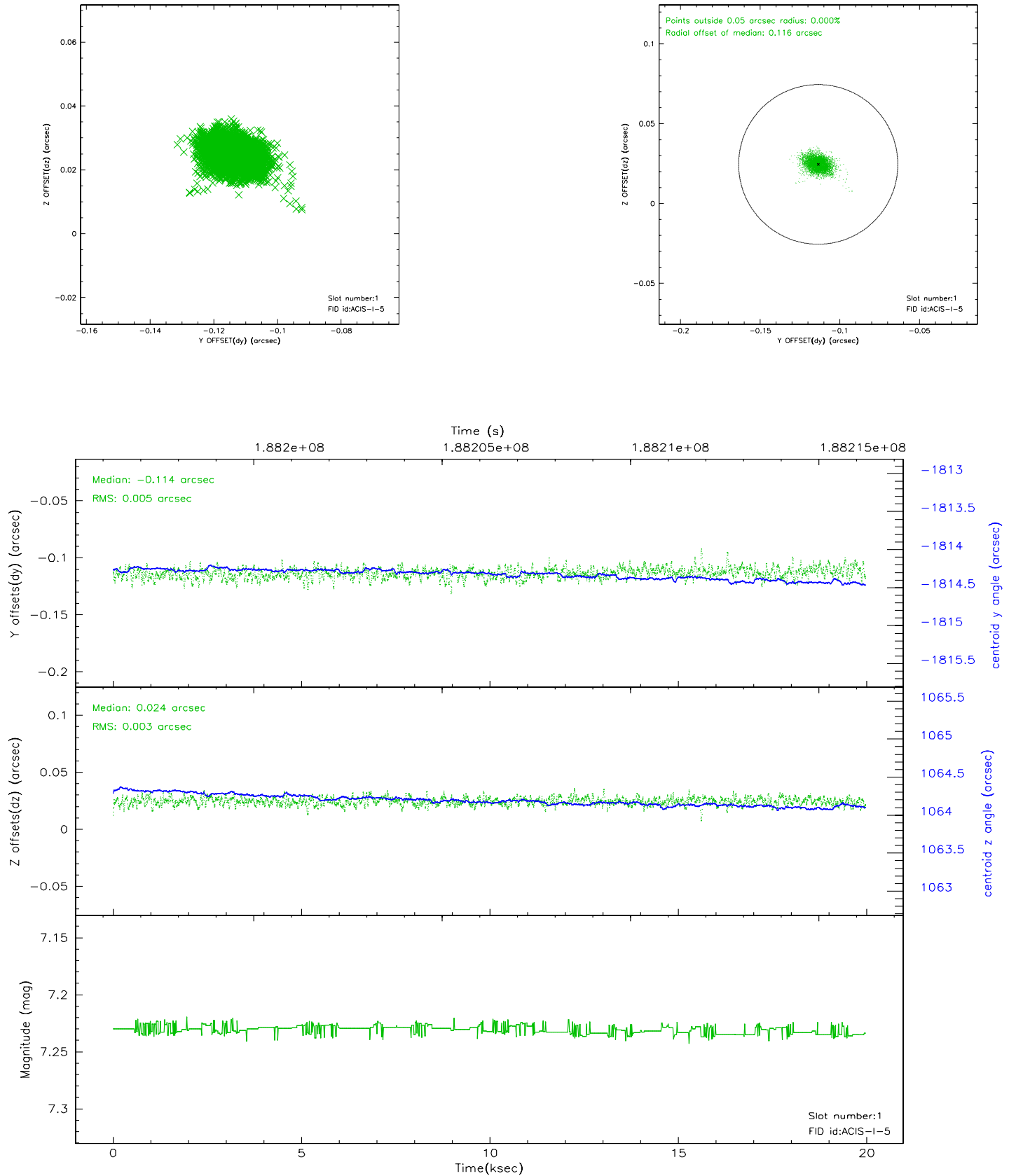


## 2.5 FID Slots

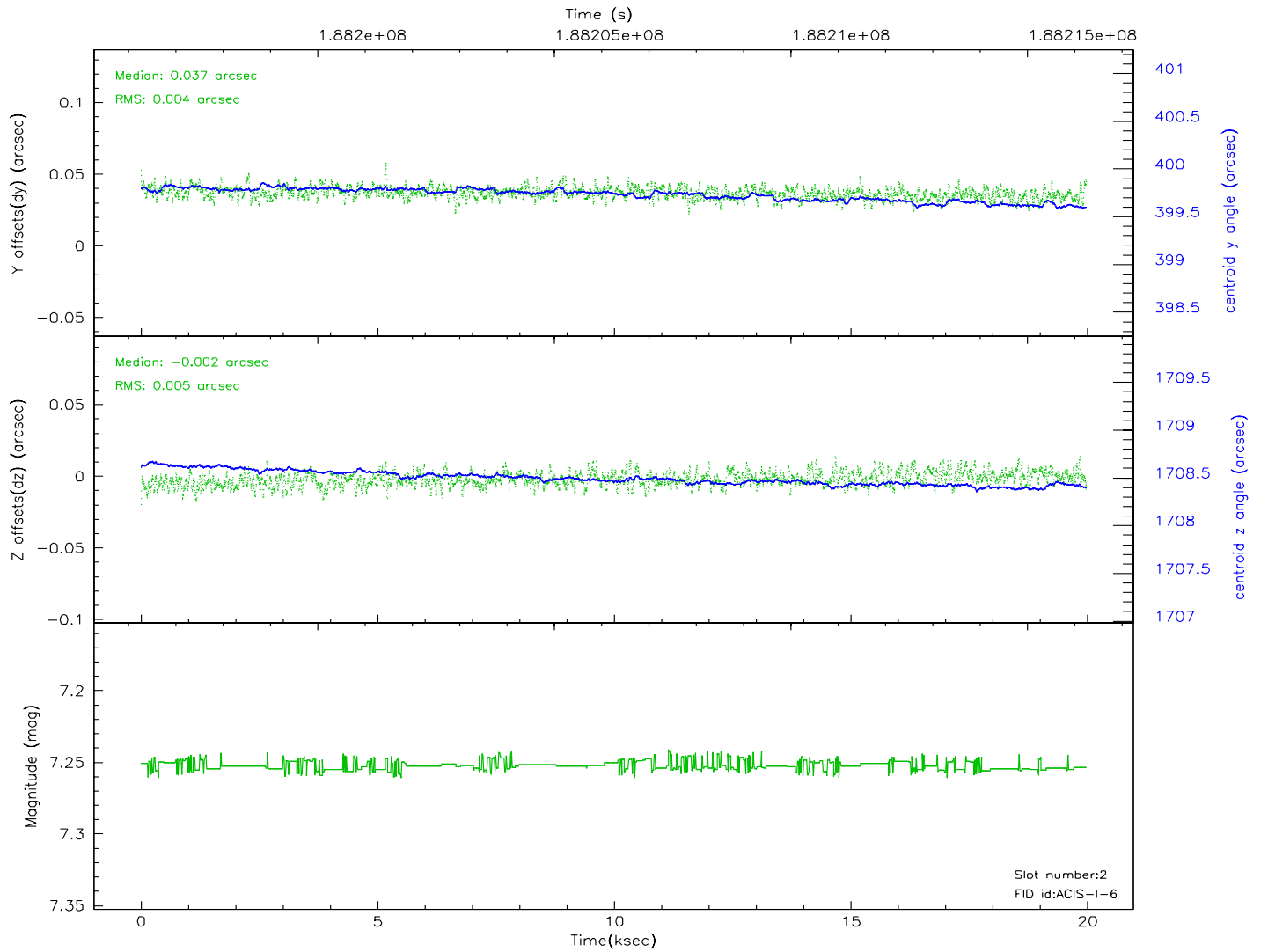
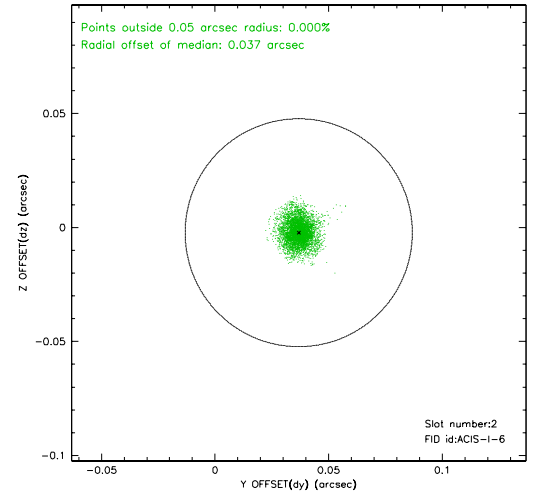
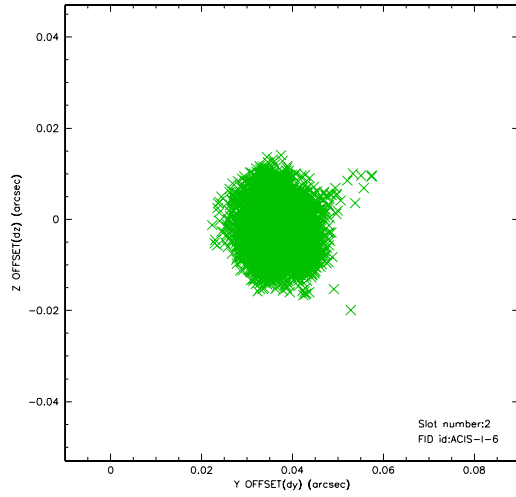
### 2.5.1 Slot 0



## 2.5.2 Slot 1

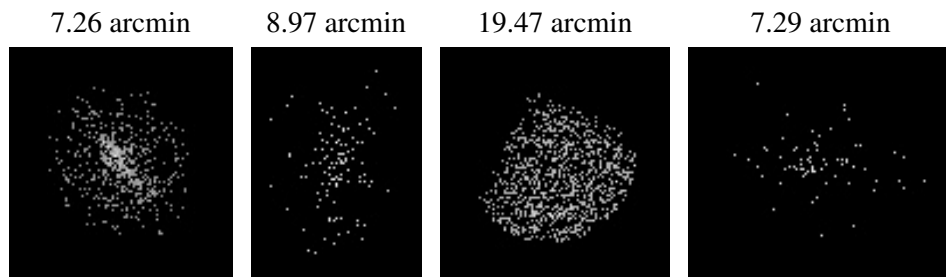


### 2.5.3 Slot 2





### 3 Point Sources



## A Summary

### A.1 Status

V&V Scientist	Jen Lauer
V&V Date (YYYY-MM-DD)	2006.06.22
V&V Edition	1
V&V Disposition and Status	OK
V&V Charge Time	19.532

### A.2 Comments

Window constraint met.