

V&V Reference Report

L2 ASCDS Version : 8.4.5

Observation 5146 - L2 Version 3
Chandra X-Ray Center

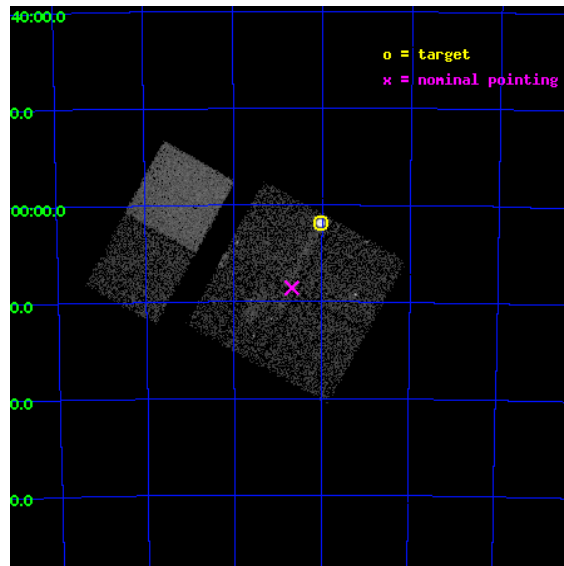
L2 Processing Date : Nov 9 2012

Contents

1	Front	2
2	OBI	3
2.1	OBI	3
2.1.1	Images	3
2.1.2	Bias	3
2.1.3	Parameters	4
2.1.4	Events	4
2.2	Compared Parameters	5
2.3	Aspect	6
2.4	Star Slots	9
2.4.1	Slot 3	9
2.4.2	Slot 4	10
2.4.3	Slot 5	11
2.4.4	Slot 6	12
2.4.5	Slot 7	13
2.5	FID Slots	14
2.5.1	Slot 0	14
2.5.2	Slot 1	15
2.5.3	Slot 2	16
A	Summary	17
A.1	Status	17
A.2	Comments	17

1 Front

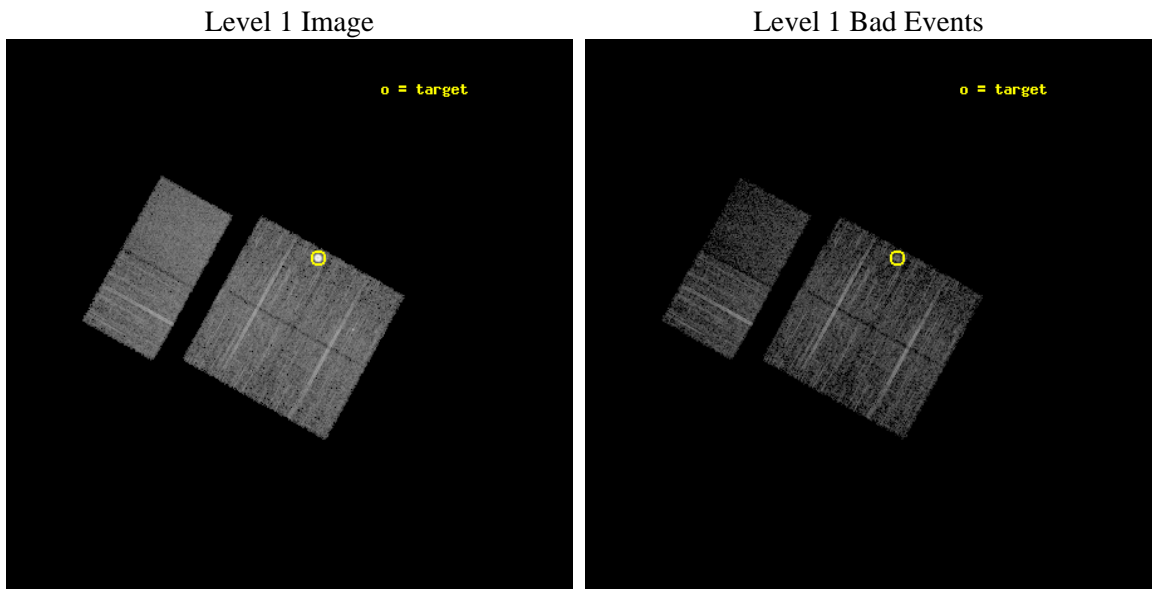
seq_num	590344	Sequence number
obs_id	5146	Observation id
title	AO5A ACIS-I Calibration Observations of E0102-72	Proposal title
observer	Dr. CXC Calibration	Principal investigator
object	E0102-72[I3,-120,-7,0.5,0]	Source name
dtcycle	0	
cycle	P	events from which exps? Prim/Second/Both
ra_targ	16.01	Observer's specified target RA [deg]
dec_targ	-72.032028	Observer's specified target Dec [deg]
ra_nom	16.170264244804	Nominal RA [deg]
dec_nom	-72.142877589667	Nominal Dec [deg]
roll_nom	299.05247147636	Nominal Roll [deg]
revision	3	Processing version of data
ontime	8214.399969399	Sum of GTIs [s]
livetime	8110.3842908686	Livetime [s]
ontime0	8214.399969399	Sum of GTIs [s]
ontime1	8214.399969399	Sum of GTIs [s]
ontime2	8211.1589991152	Sum of GTIs [s]
ontime3	8214.399969399	Sum of GTIs [s]
ontime6	8214.399969399	Sum of GTIs [s]
ontime7	8214.399969399	Sum of GTIs [s]
l2events	56378	Number of level 2 events



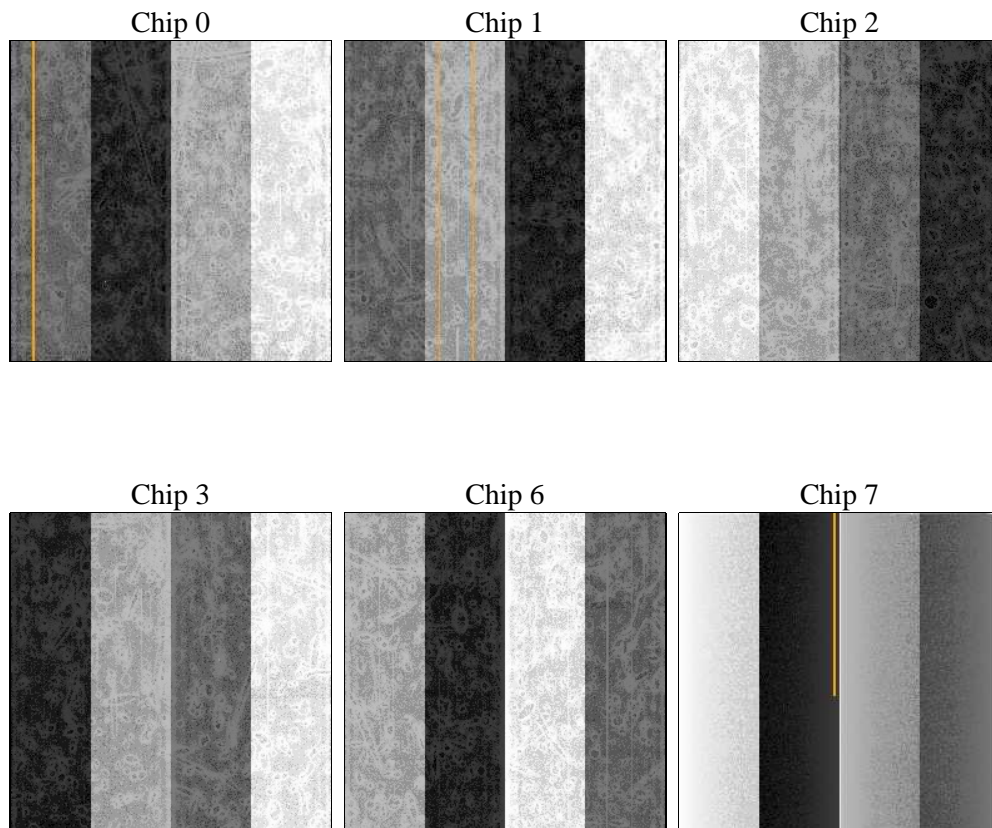
2 OBI

2.1 OBI

2.1.1 Images



2.1.2 Bias



2.1.3 Parameters

obi_num	0	Obi number	sched_exp_time	8249.678000	[s] Scheduled observation exposure time
ascdsver	8.4.5	Processing system revision	ontime	8214.399969399	Sum of GTIs [s]
caldsver	4.5.2	 	ontime0	8214.399969399	Sum of GTIs [s]
date	2012-11-09T07:43:01	Date and time of file creation	ontime1	8214.399969399	Sum of GTIs [s]
revision	3	Processing version of data	ontime2	8211.1589991152	Sum of GTIs [s]
			ontime3	8214.399969399	Sum of GTIs [s]
			ontime6	8214.399969399	Sum of GTIs [s]
			ontime7	8214.399969399	Sum of GTIs [s]
			l1events	242019	Number of level 1 events

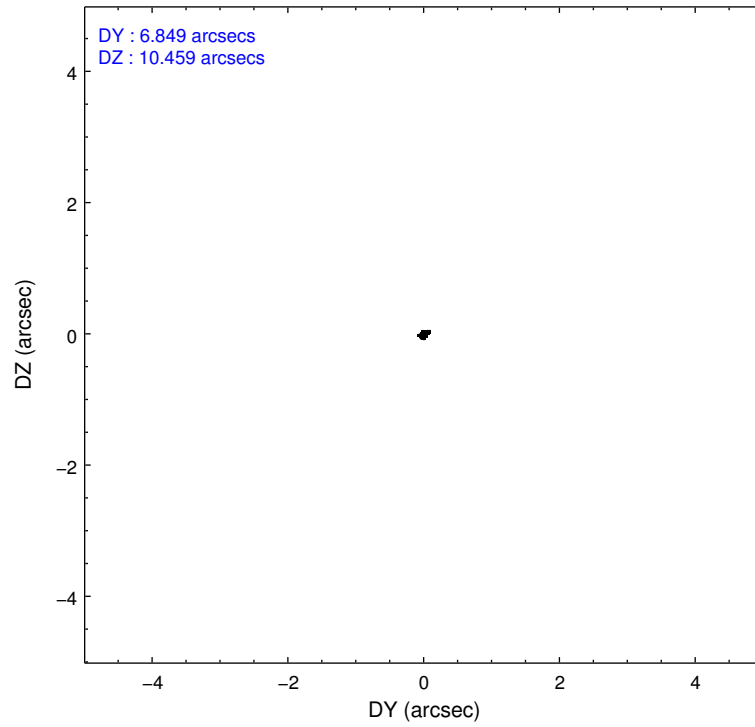
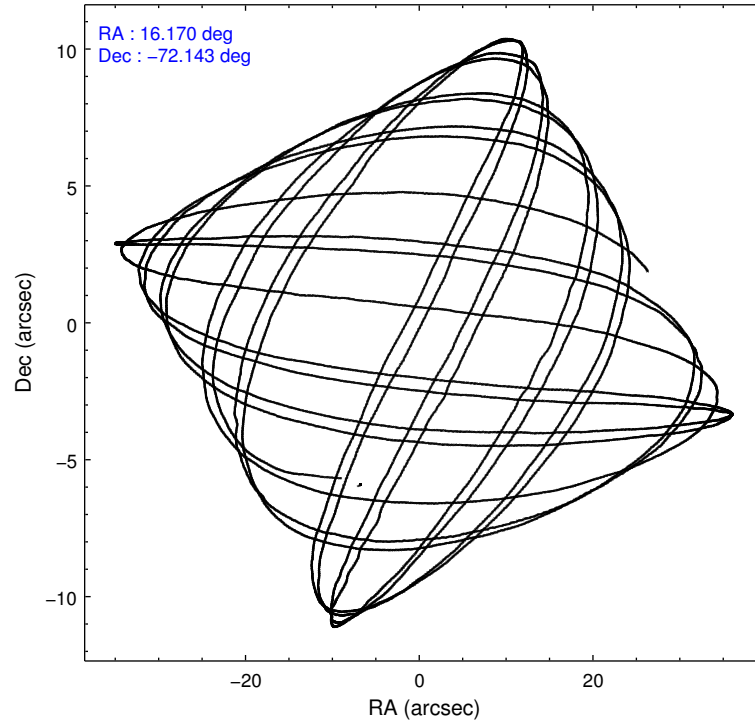
2.1.4 Events

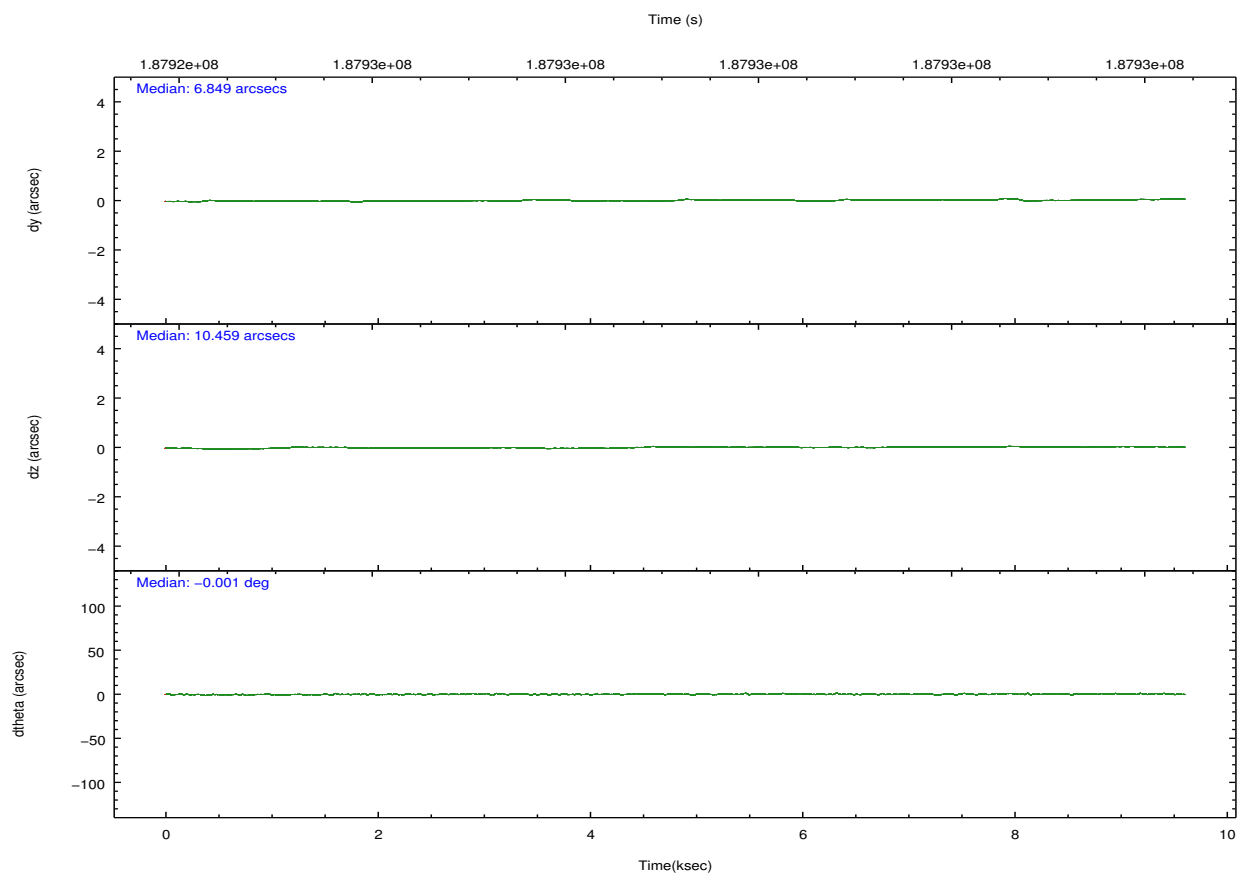
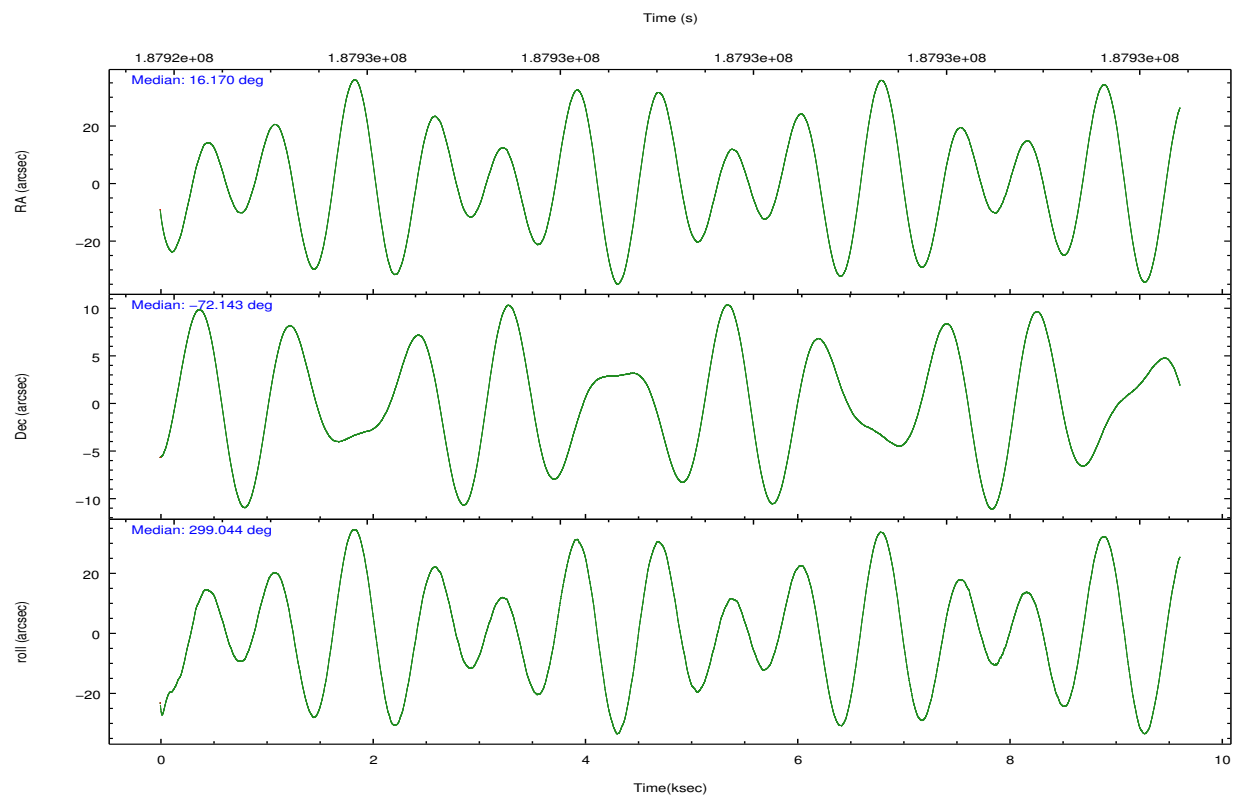
	ccd 0	ccd 1	ccd 2	ccd 3	ccd 6	ccd 7		ccd 0	ccd 1	ccd 2	ccd 3	ccd 6	ccd 7
level 1 events	34259	35218	38766	59003	38658	36115	grade 0 events	1500	1975	1993	20902	1481	1822
rejected events	30344	30566	34386	33058	34683	18636		4%	5%	5%	35%	3%	5%
rejected %	88%	86%	88%	56%	89%	51%	grade 1 events	13	20	26	156	17	47
								0%	0%	0%	0%	0%	0%
							grade 2 events	904	934	900	2466	865	3580
								2%	2%	2%	4%	2%	9%
							grade 3 events	441	476	385	850	437	1806
								1%	1%	0%	1%	1%	5%
							grade 4 events	400	453	444	906	390	1655
								1%	1%	1%	1%	1%	4%
							grade 5 events	1128	1227	1056	1368	1381	3953
								3%	3%	2%	2%	3%	10%
							grade 6 events	671	818	658	835	803	8626
								1%	2%	1%	1%	2%	23%
							grade 7 events	29202	29315	33304	31520	33284	14626
								85%	83%	85%	53%	86%	40%

2.2 Compared Parameters

Parameter	Planned	Actual	Parameter	Planned	Actual
Instrument	ACIS	ACIS	Obspar format version number	7	7
Detector	ACIS-012367	ACIS-012367	Obspar file type	PREDICTED	ACTUAL
Grating	NONE	NONE	Obspar update status	NONE	UPDATED
Data mode	VFAINT	VFAINT	Number of optional ACIS chips dropped	0	0
Observation mode	POINTING	POINTING	On-chip summing requested	N	N
[deg] Pointing RA	16.093667	16.17026424480375	Subarray requested	NONE	NONE
[deg] Pointing Dec	-72.128931	-72.14287758966663	Alternating exposures requested	N	N
[deg] Pointing Roll	298.770911	299.0524714763612	[s] Primary exposure time	0.000000	3.2
[s] Window start time (MET)	181353664.184000	181353664.184000			
[s] Window stop time (MET)	189216064.184000	189216064.184000			
[mm] SIM focus pos	-0.782348	-0.7809083437167272			
[mm] SIM defocus	0	0.001439871863259334			
[mm] SIM translation stage pos	-233.592463	-233.5874344608287			
[mm] SIM translation stage offset	0	-0.005018542100998502			
[s] Observation start time (MET)	187925688.184000	187924142.58803			
Observation start date	2003-12-16T01:33:44	2003-12-16T01:09:02			
[s] Observation end time (MET)	187933938.184000	187935697.41353			
Observation end date	2003-12-16T03:51:14	2003-12-16T04:21:37			
Read mode	TIMED	TIMED			

2.3 Aspect



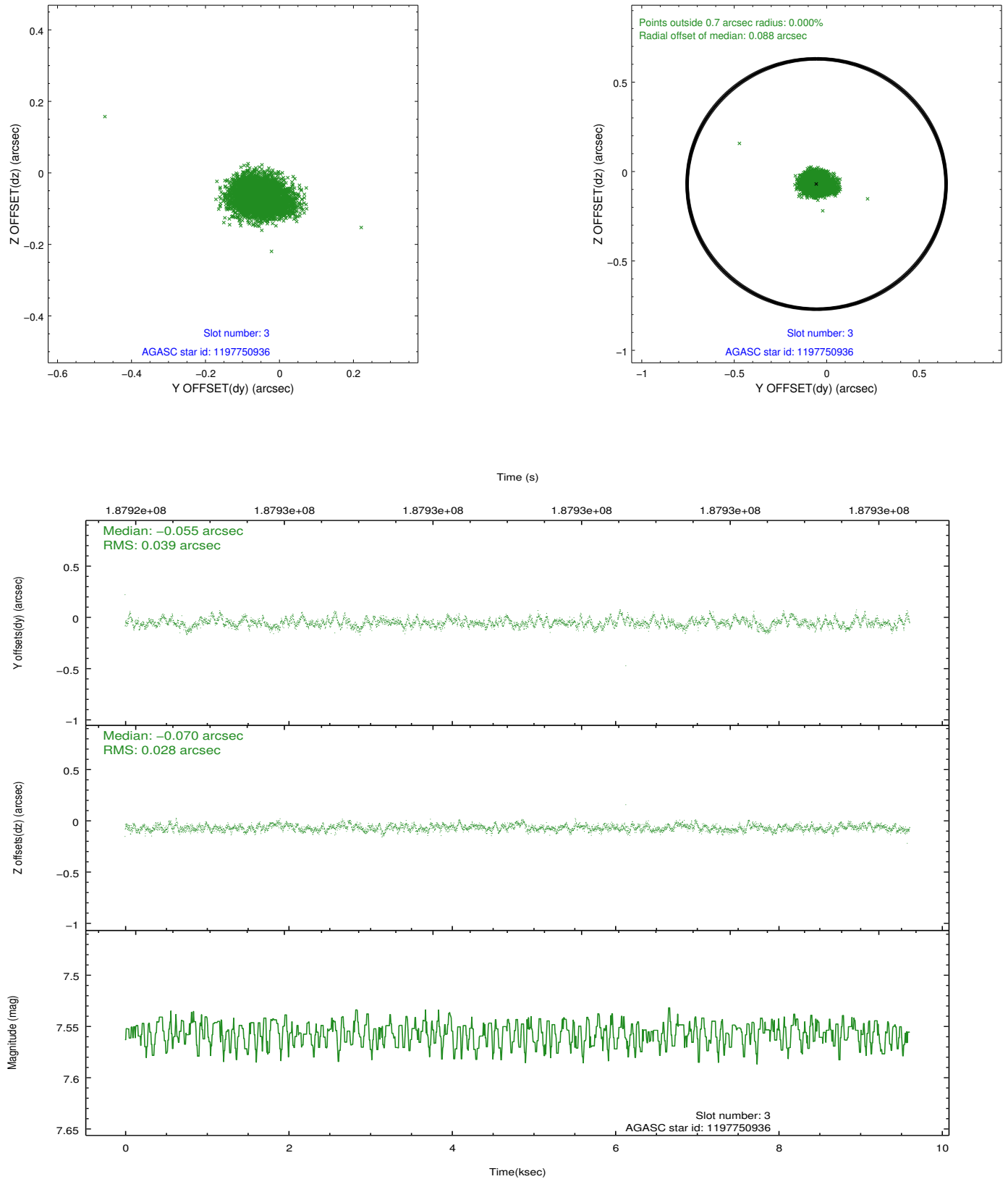


Slot Statistics

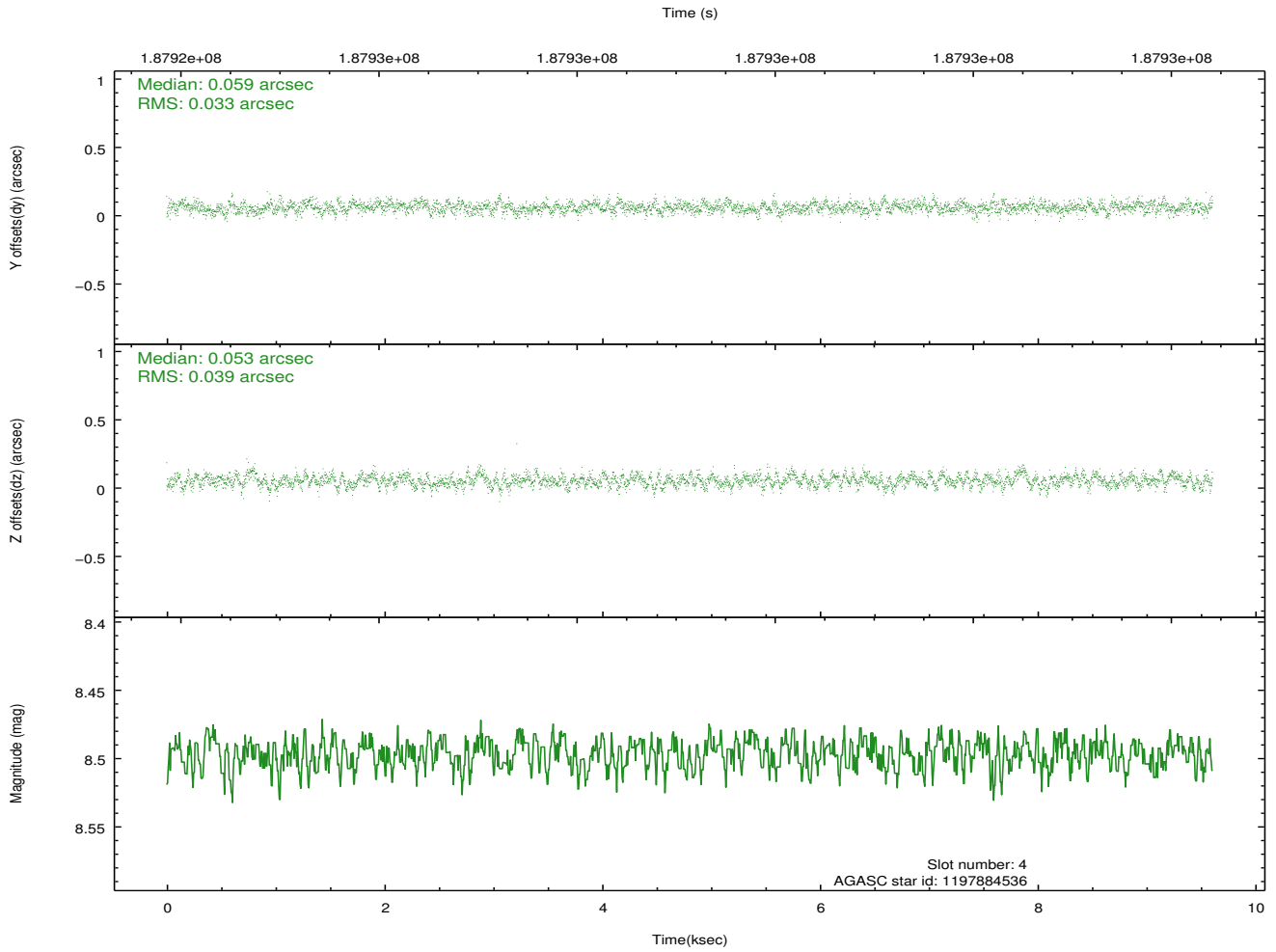
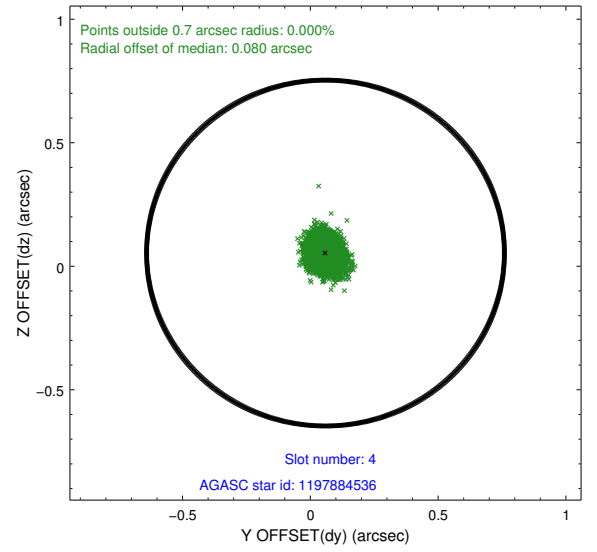
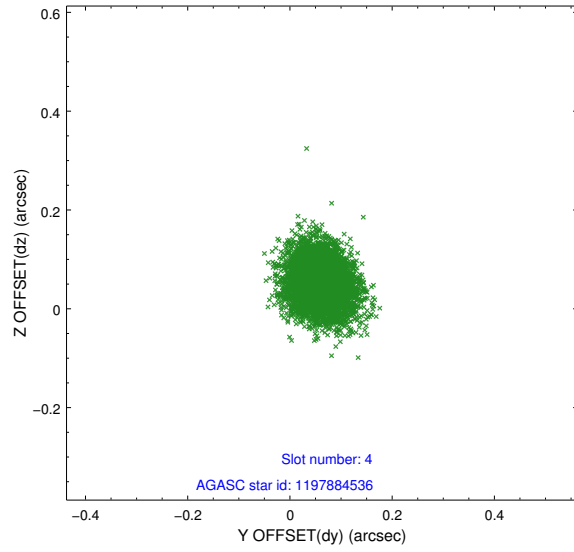
slot	status	id	mag	n_pts	med_dy	med_dz	dr1	dr2	ra	dec	mean_y	mean_z
0	FID	ACIS-I-1	7.23	2344	0.002	0.012	0.007	0.011	0.000000	0.000000	932.83	-833.93
1	FID	ACIS-I-5	7.23	2344	-0.126	0.032	0.006	0.011	0.000000	0.000000	-1815.08	1063.32
2	FID	ACIS-I-6	7.25	2344	0.032	0.026	0.007	0.012	0.000000	0.000000	397.82	1708.43
3	GUIDE	1197750936	7.56	4688	-0.055	-0.070	0.051	0.084	15.387940	-71.549550	-2210.56	296.60
4	GUIDE	1197884536	8.50	4688	0.059	0.053	0.055	0.089	17.160729	-71.835289	-341.05	1553.60
5	GUIDE	1197884712	8.30	4688	0.096	0.078	0.053	0.087	16.087398	-72.252690	387.83	-219.84
6	GUIDE	1197885328	7.23	4688	-0.006	-0.062	0.053	0.084	16.283090	-71.733943	-1142.74	871.95
7	GUIDE	1198189696	7.38	4687	-0.097	-0.001	0.058	0.086	15.223750	-72.697522	1352.39	-1804.32

2.4 Star Slots

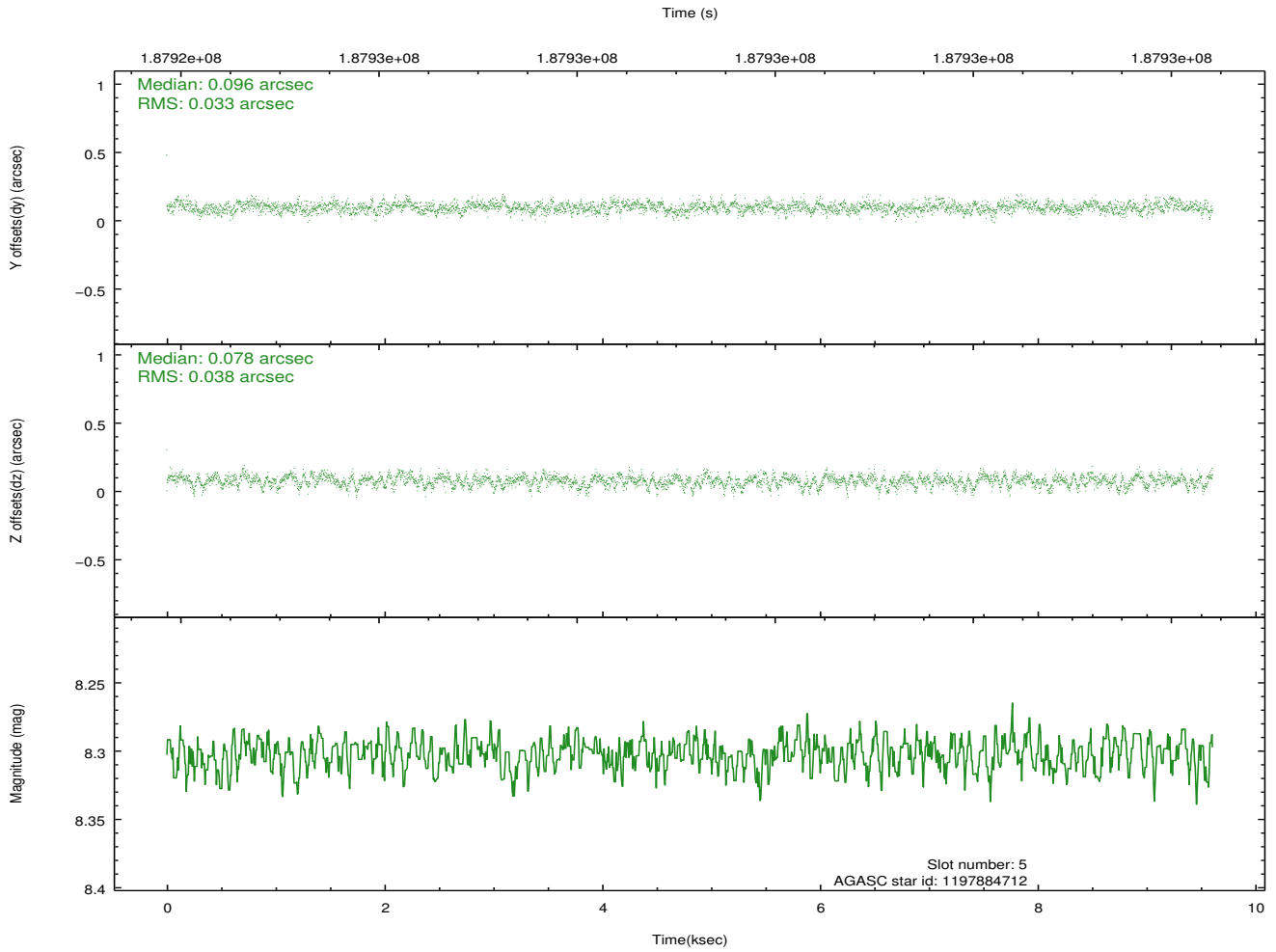
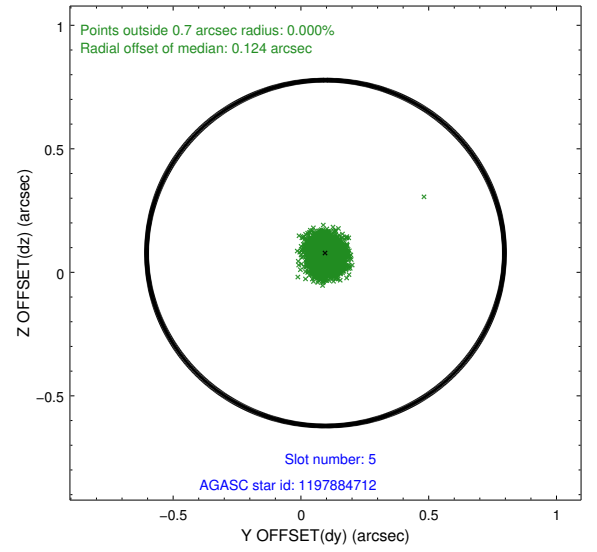
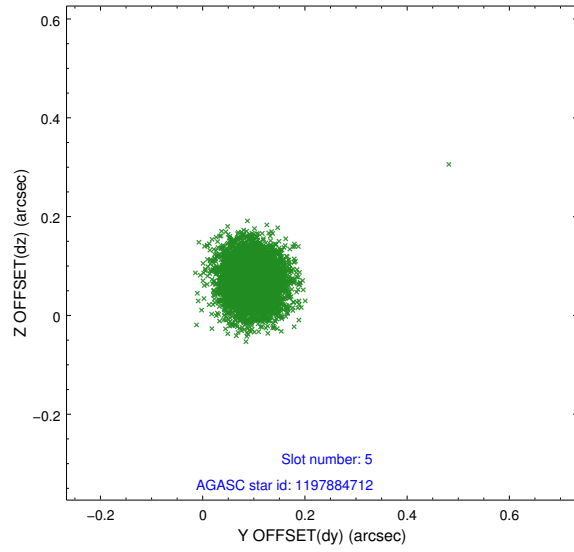
2.4.1 Slot 3



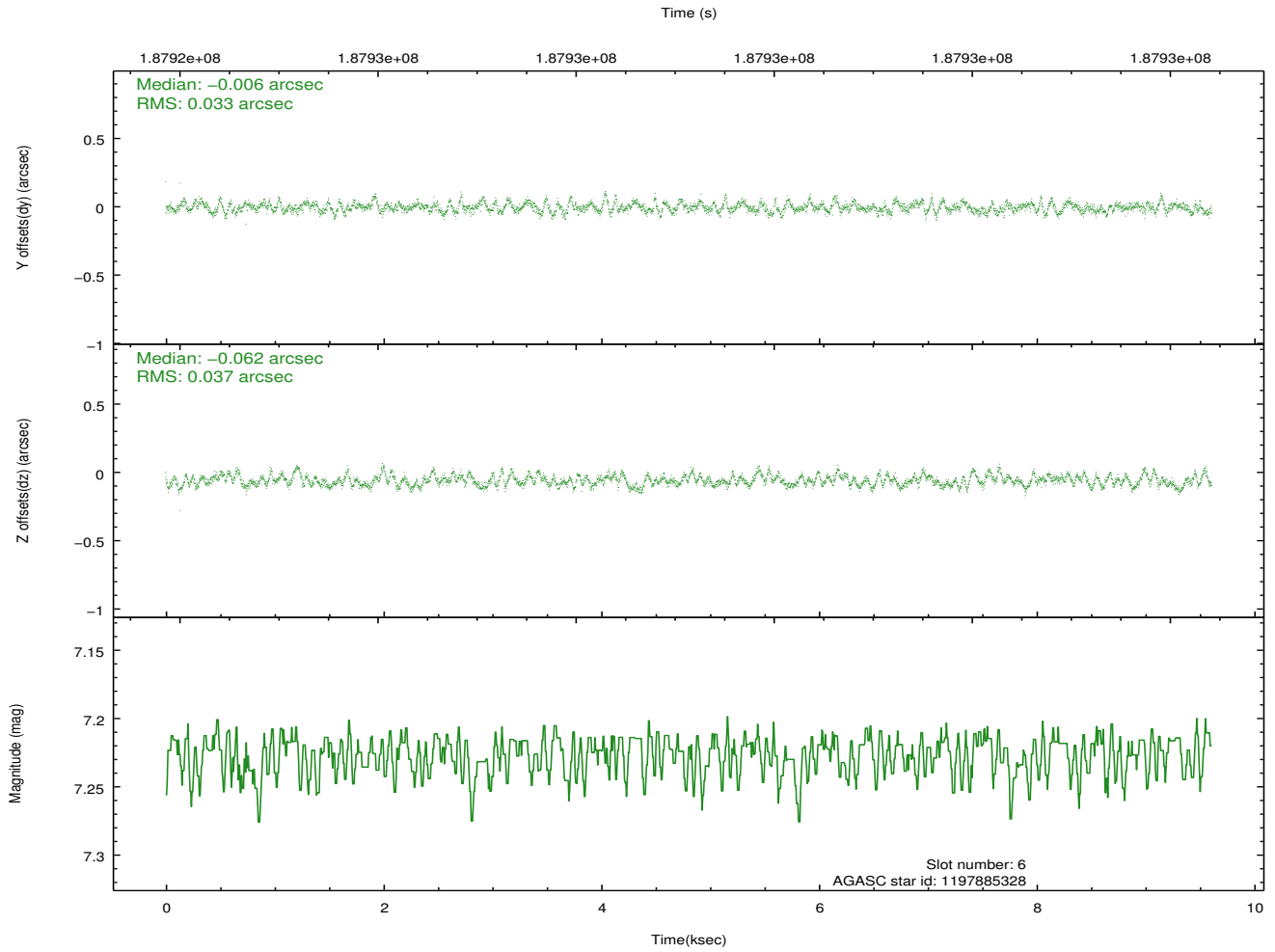
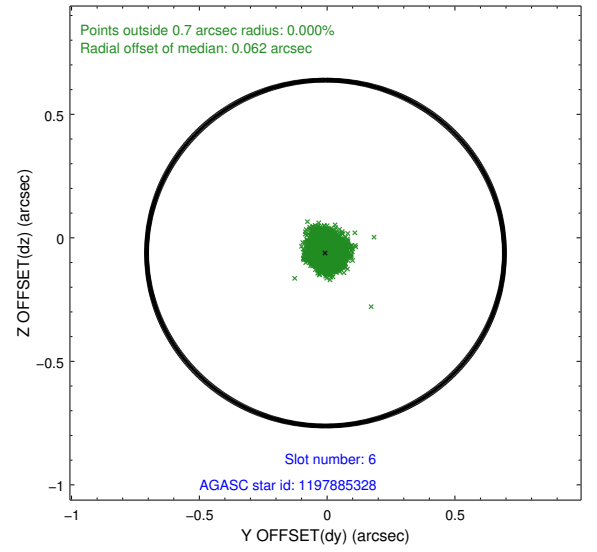
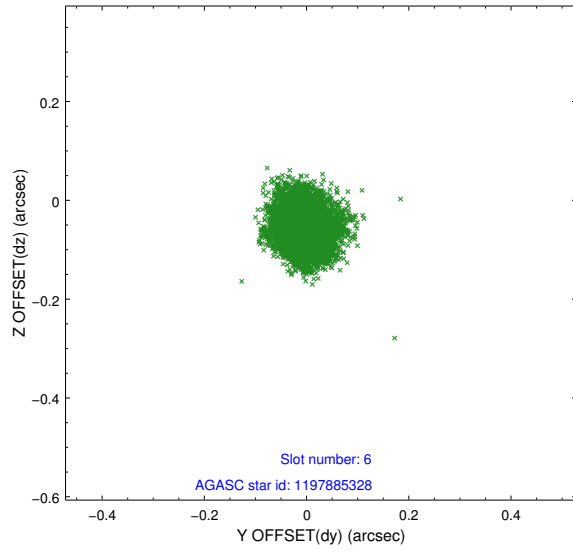
2.4.2 Slot 4



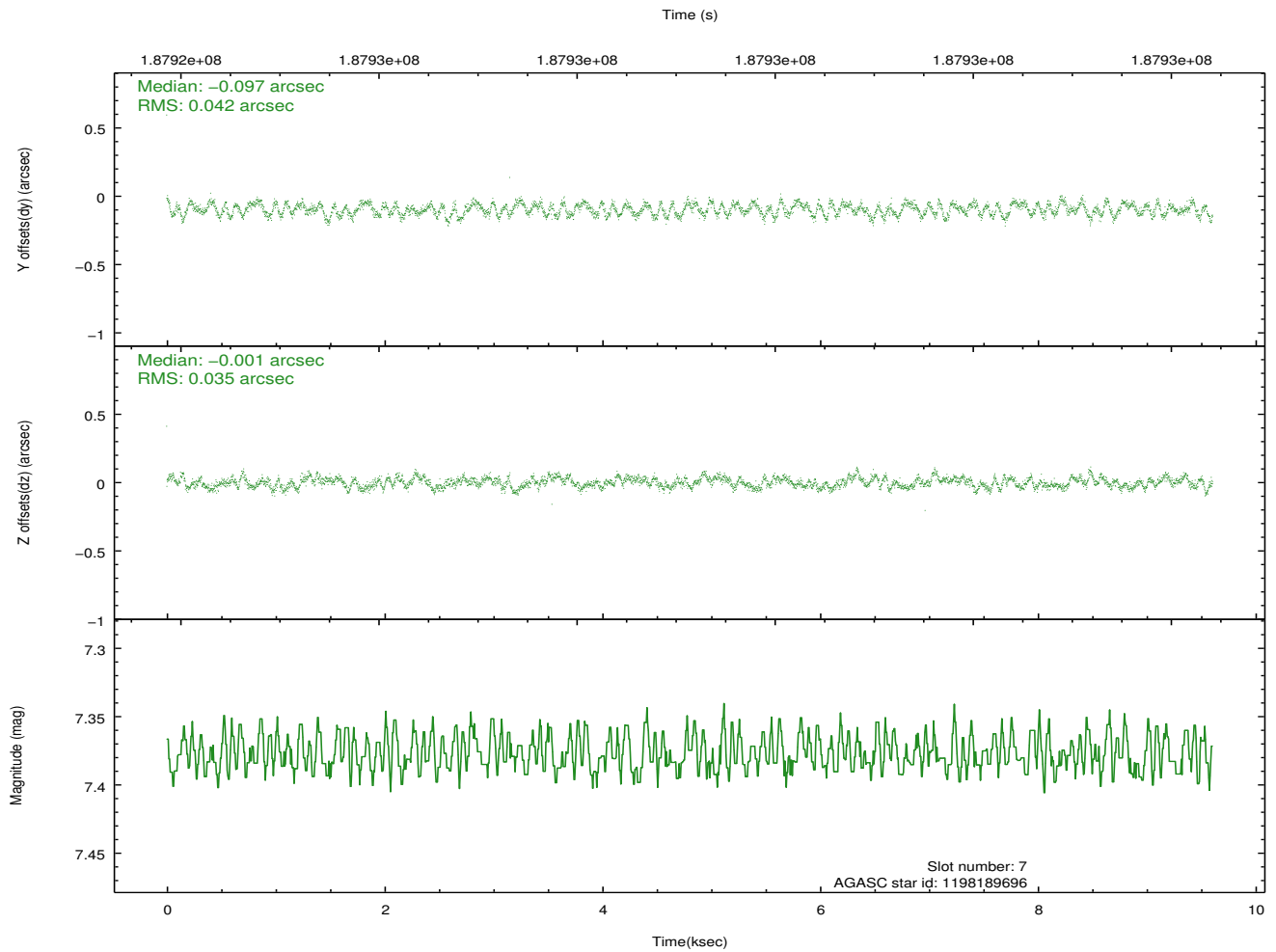
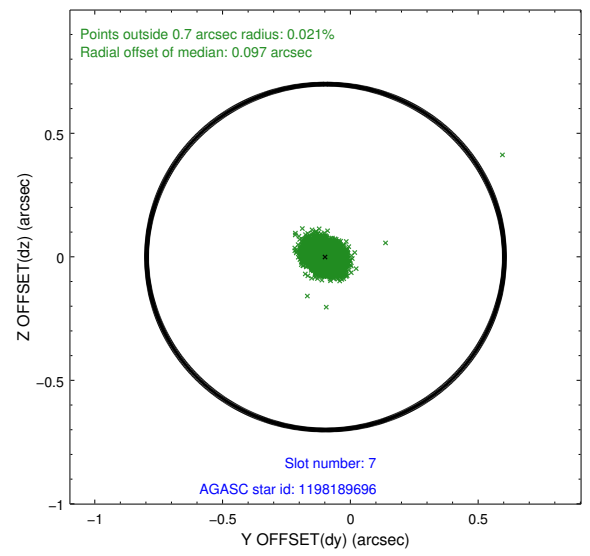
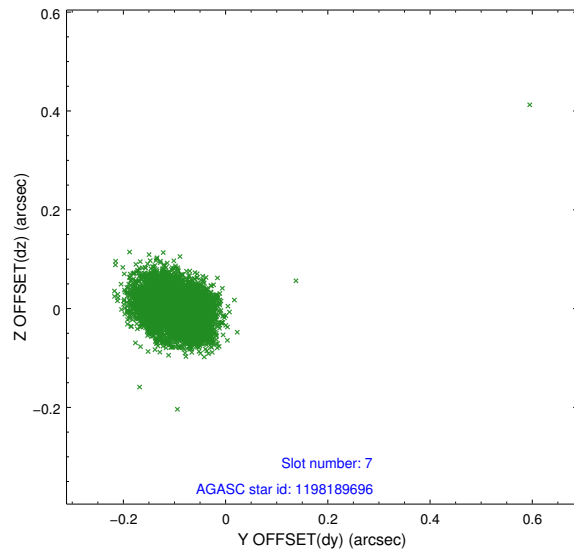
2.4.3 Slot 5



2.4.4 Slot 6

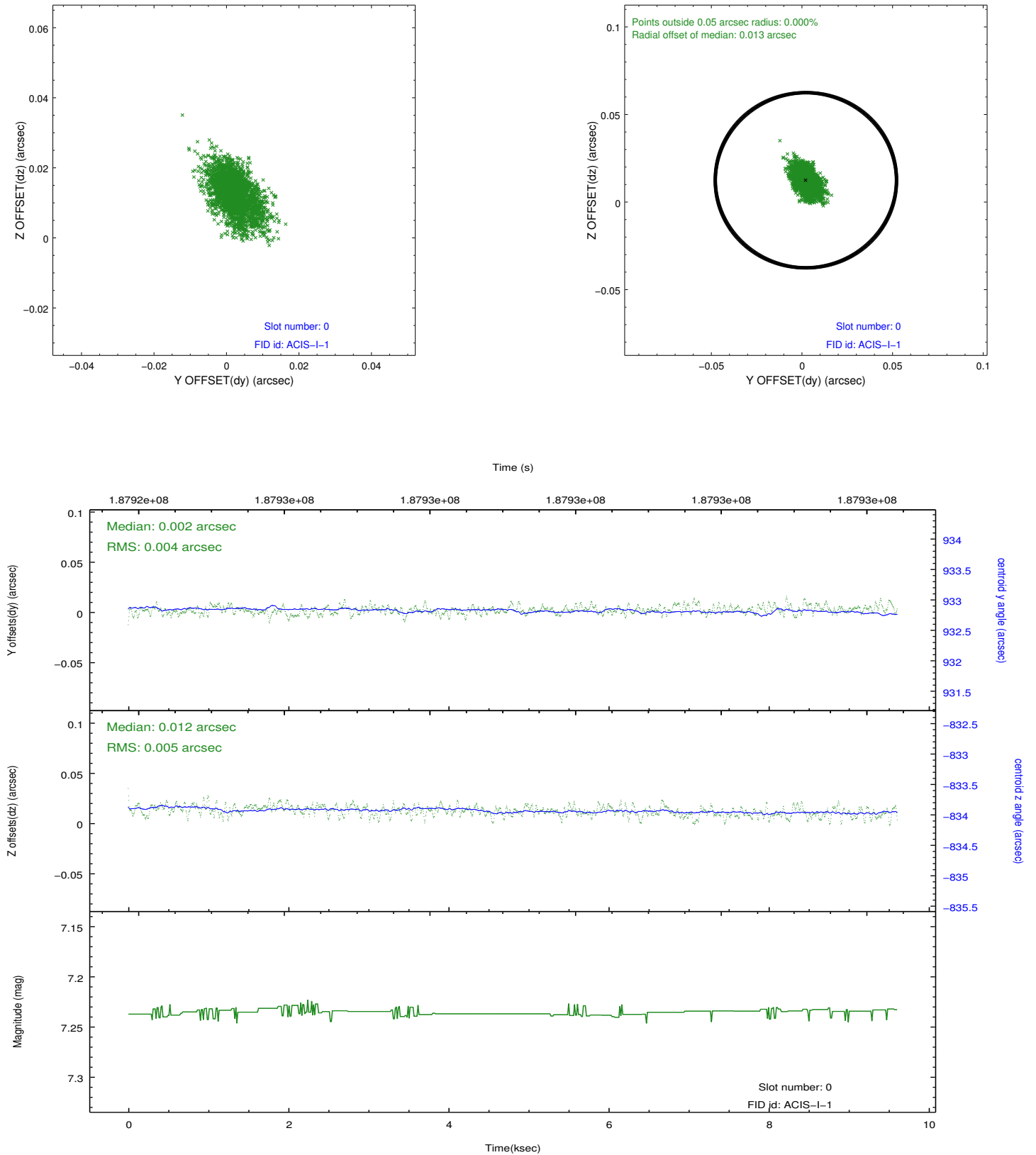


2.4.5 Slot 7

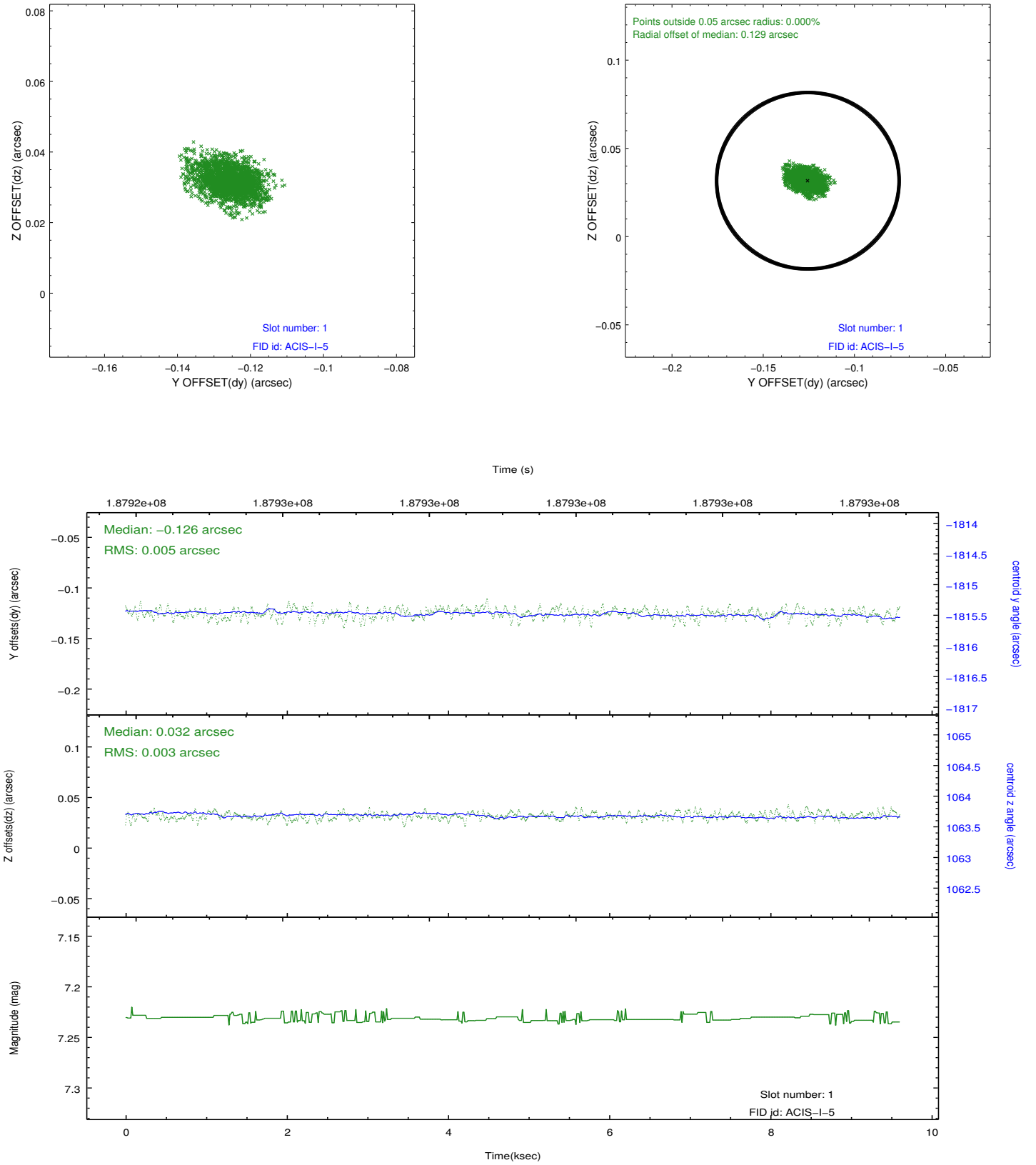


2.5 FID Slots

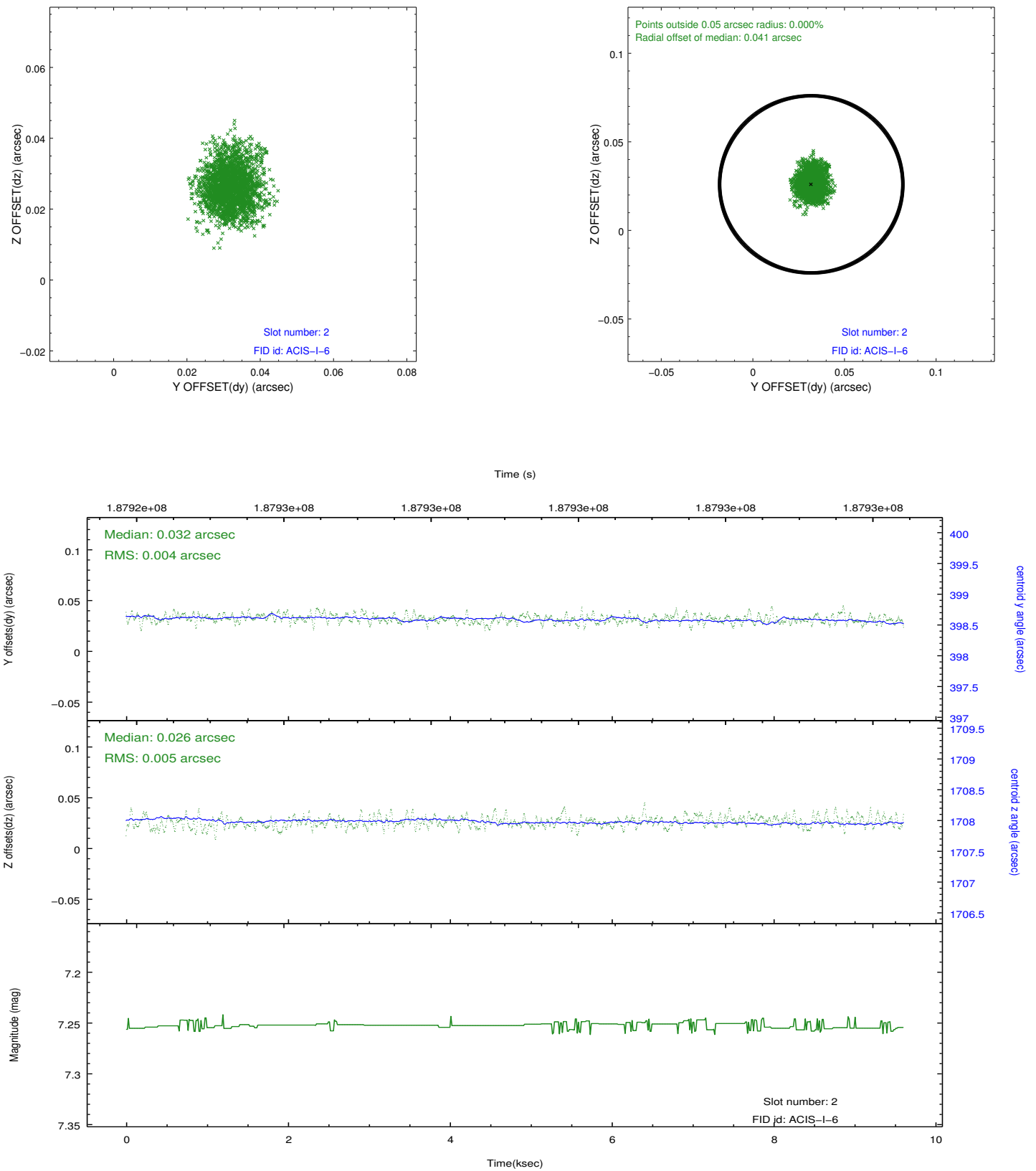
2.5.1 Slot 0



2.5.2 Slot 1



2.5.3 Slot 2



A Summary

A.1 Status

V&V Scientist	Jen Lauer
V&V Date (YYYY-MM-DD)	2012.12.03
V&V Edition	1
V&V Disposition and Status	OK
V&V Charge Time	8.217

A.2 Comments

Window constraint met.