

# V&V Reference Report

## L2 ASCDS Version : 7.6.7.2

Observation 5140 - L2 Version 001  
Chandra X-Ray Center

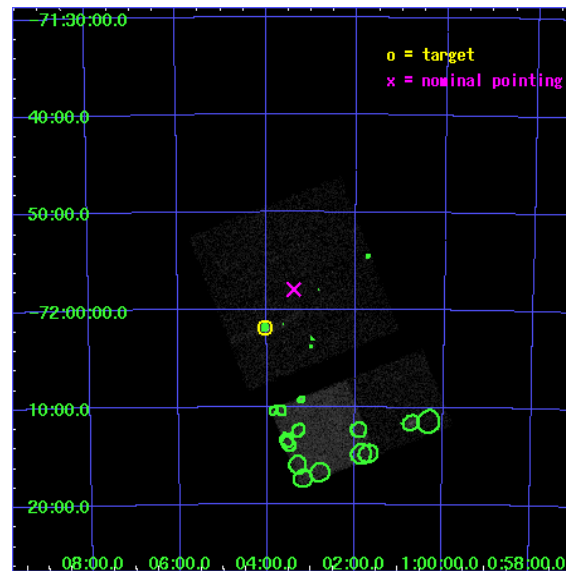
L2 Processing Date : May 20 2006

## Contents

<b>1</b>	<b>Front</b>	<b>2</b>
<b>2</b>	<b>OBI</b>	<b>3</b>
2.1	OBI . . . . .	3
2.1.1	Images . . . . .	3
2.1.2	Bias . . . . .	3
2.1.3	Parameters . . . . .	4
2.1.4	Events . . . . .	4
2.2	Compared Parameters . . . . .	5
2.3	Aspect . . . . .	6
2.4	Star Slots . . . . .	9
2.4.1	Slot 3 . . . . .	9
2.4.2	Slot 4 . . . . .	10
2.4.3	Slot 5 . . . . .	11
2.4.4	Slot 6 . . . . .	12
2.4.5	Slot 7 . . . . .	13
2.5	FID Slots . . . . .	14
2.5.1	Slot 0 . . . . .	14
2.5.2	Slot 1 . . . . .	15
2.5.3	Slot 2 . . . . .	16
<b>3</b>	<b>Point Sources</b>	<b>17</b>
<b>A</b>	<b>Summary</b>	<b>18</b>
A.1	Status . . . . .	18
A.2	Comments . . . . .	18

# 1 Front

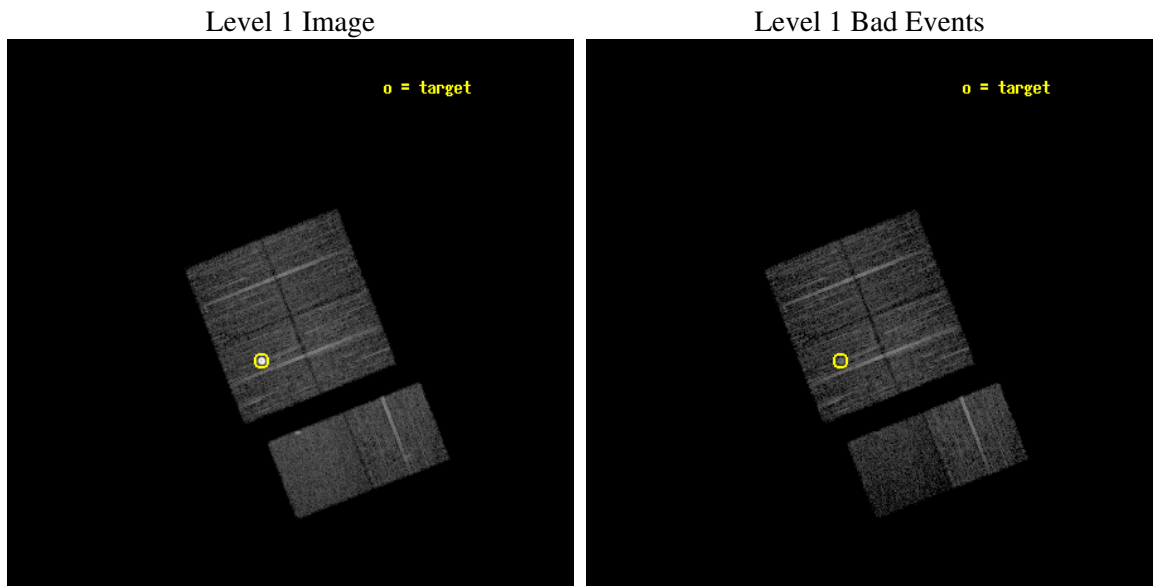
seq_num	590338
obs_id	5140
title	AO5B ACIS-I Calibration Observations of E0102-72
observer	Dr. CXC Calibration
object	E0102-72[I3,-120,-4.0,2.5,0]
dtcycle	0
cycle	P
ra_targ	16.01
dec_targ	-72.032028
ra_nom	15.847860945171
dec_nom	-71.965696332404
roll_nom	158.66781763447
revision	2
ontime	8143.9999696612
livetime	8040.8757383173
ontime0	8143.9999696612
ontime1	8143.9999696612
ontime2	8143.9999696612
ontime3	8143.9999696612
ontime6	8143.9999696612
ontime7	8143.9999696612
l2events	62345



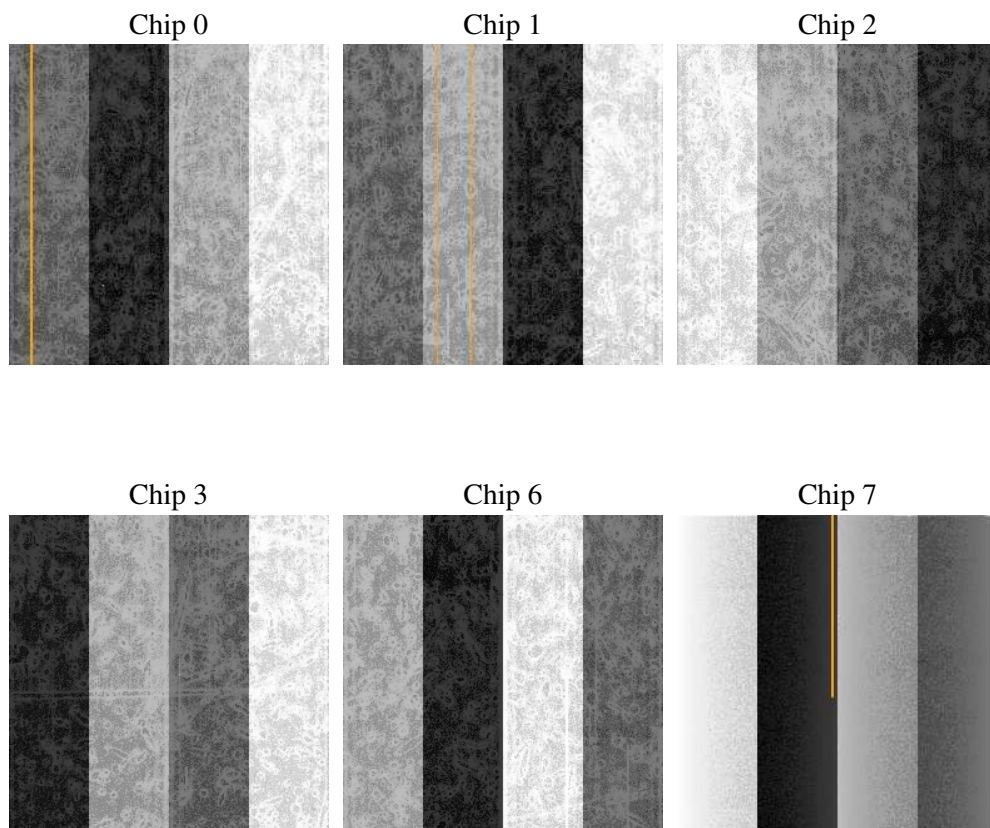
## 2 OBI

### 2.1 OBI

#### 2.1.1 Images



#### 2.1.2 Bias



### 2.1.3 Parameters

obi_num	0
ascdsver	7.6.7.2
caldsver	3.2.2
date	2006-05-20T12:29:42
revision	2

sched_exp_time	8000.000000
ontime	8371.5094192326
ontime0	8371.5094491541
ontime1	8371.5094192326
ontime2	8371.5094192326
ontime3	8371.5094192326
ontime6	8371.5094192326
ontime7	8371.5094491541
l1events	300624

### 2.1.4 Events

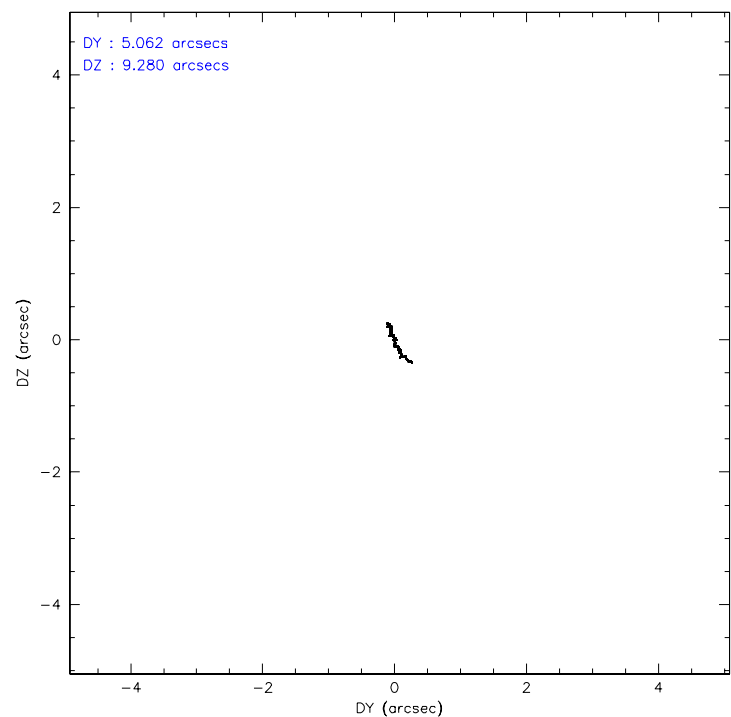
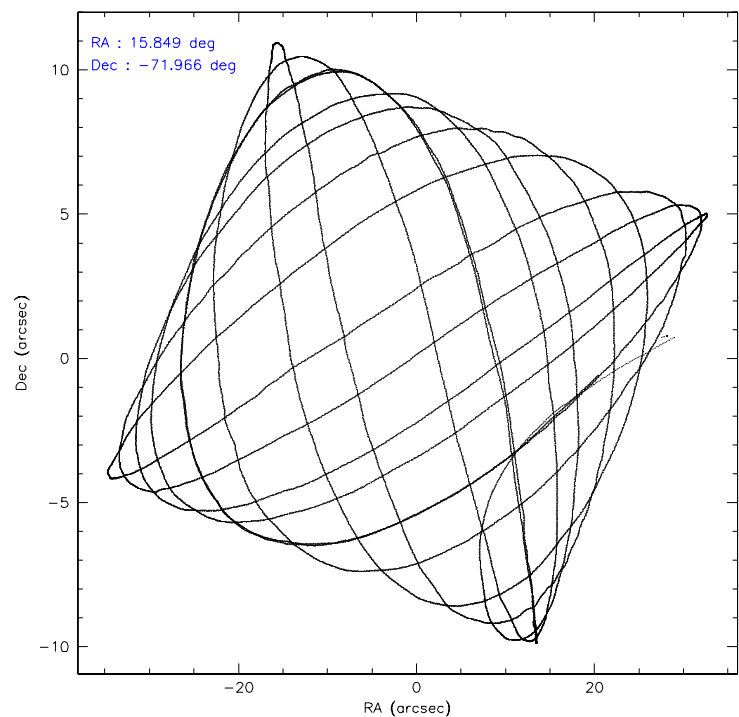
	ccd 0	ccd 1	ccd 2	ccd 3	ccd 6	ccd 7
level 1 events	41627	43317	50077	73561	47918	44124
rejected events	37177	38680	45621	43870	42781	24074
rejected %	89%	89%	91%	59%	89%	54%

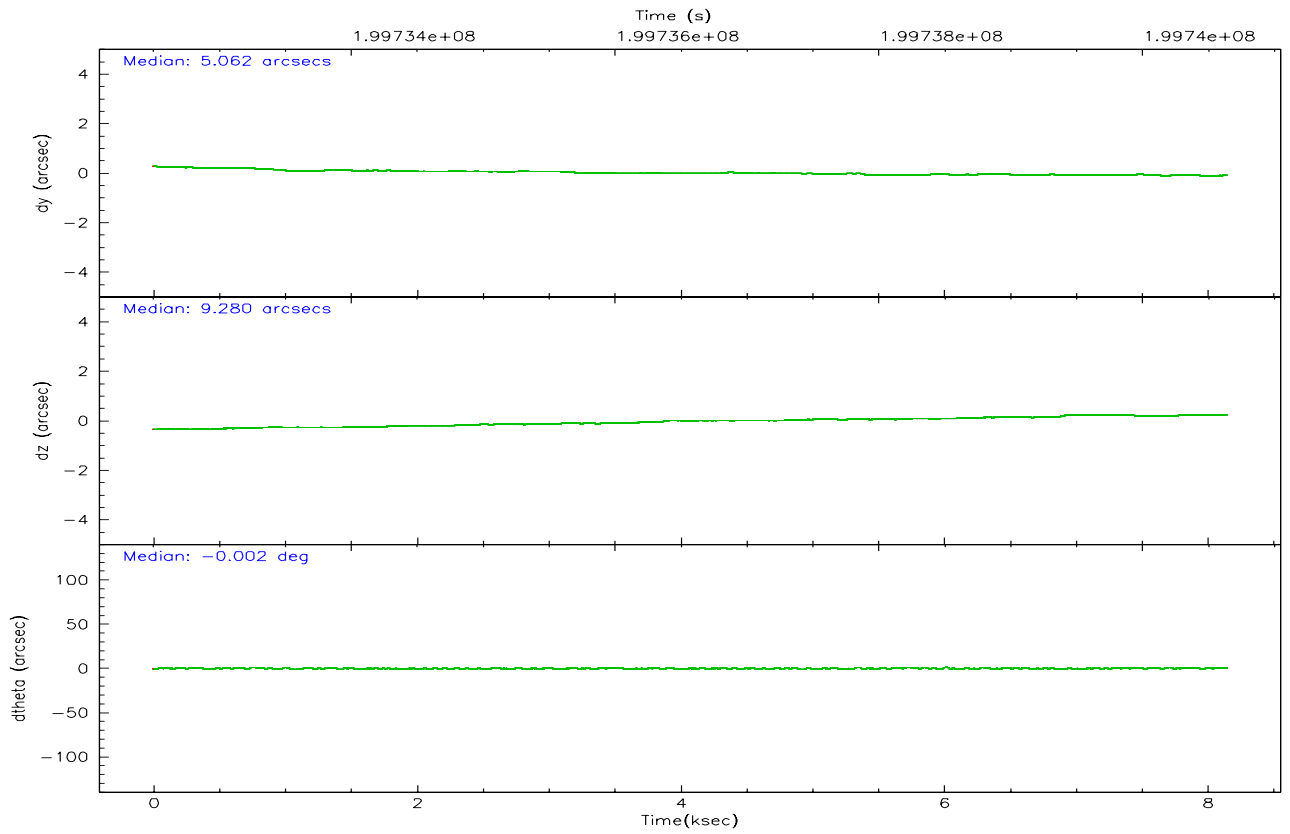
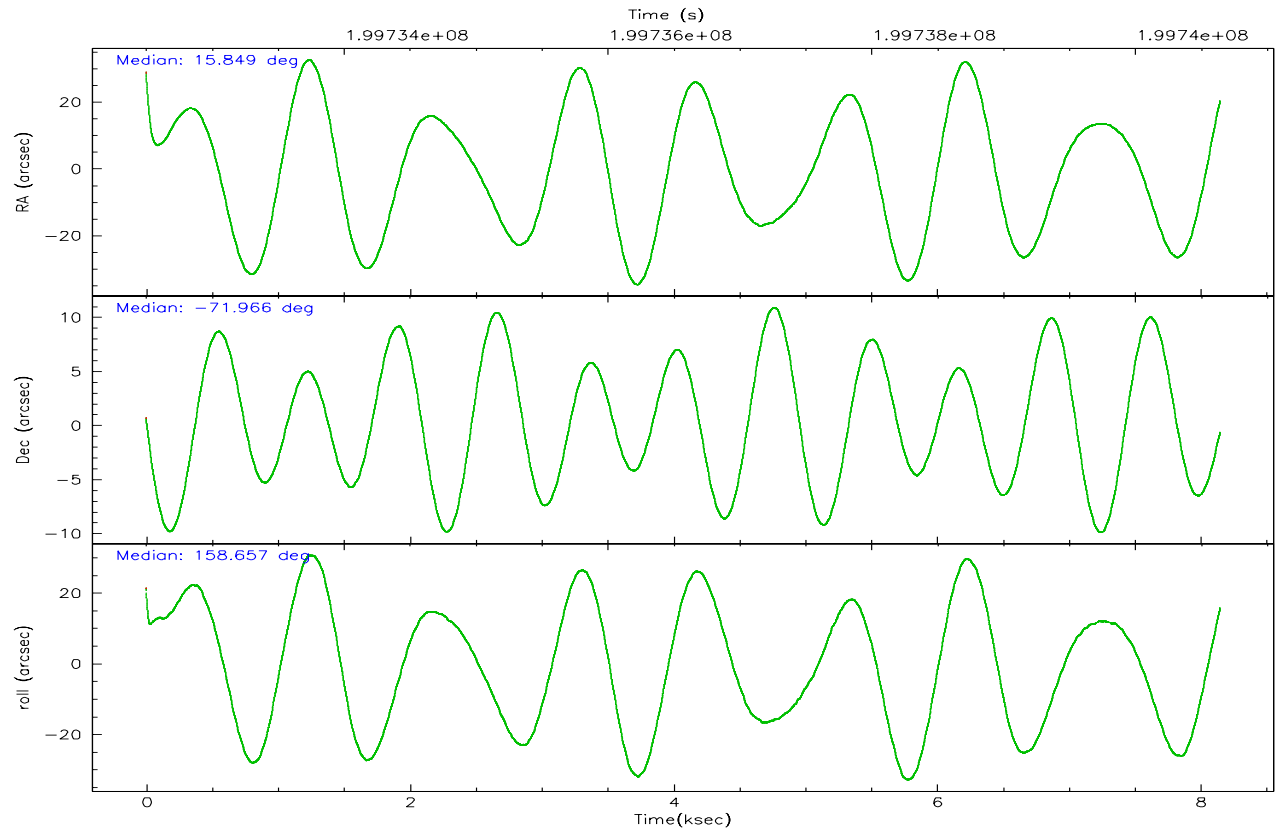
	ccd 0	ccd 1	ccd 2	ccd 3	ccd 6	ccd 7
grade 0 events	1759	1700	1784	24843	2199	1530
	4%	3%	3%	33%	4%	3%
grade 1 events	10	10	33	235	29	23
	0%	0%	0%	0%	0%	0%
grade 2 events	1094	1019	1049	2780	1049	5404
	2%	2%	2%	3%	2%	12%
grade 3 events	504	564	483	925	561	1366
	1%	1%	0%	1%	1%	3%
grade 4 events	472	563	480	943	529	1284
	1%	1%	0%	1%	1%	2%
grade 5 events	1365	1503	1340	1607	1664	3567
	3%	3%	2%	2%	3%	8%
grade 6 events	747	964	786	888	926	11029
	1%	2%	1%	1%	1%	24%
grade 7 events	35676	36994	44122	41340	40961	19921
	85%	85%	88%	56%	85%	45%

## 2.2 Compared Parameters

Parameter	Planned	Actual	Parameter	Planned	Actual
Instrument	ACIS	ACIS	Obspar format version number	6	6
Detector	ACIS-012367	ACIS-012367	Obspar file type	PREDICTED	ACTUAL
Grating	NONE	NONE	Obspar update status	NONE	UPDATED
Data mode	VFAINT	VFAINT	On-chip summing requested	N	N
Observation mode	POINTING	POINTING	Subarray requested	NONE	NONE
Pointing RA	15.935189	15.84786094517121	Alternating exposures requested	N	N
Pointing Dec	-71.961351	-71.96569633240411	Primary exposure time	0.000000	3.2
Pointing Roll	158.542186	158.6678176344676			
Window start time	197164864.184000	197164864.184000			
Window stop time	199670464.184000	199670464.184000			
SIM focus pos (mm)	-0.782348	-0.7809083437167272			
SIM defocus (mm)	0	0.001439871863259334			
SIM translation stage pos (mm)	-233.592463	-233.5874344608287			
SIM translation stage offset (mm)	0	-0.005018542100998502			
Observation start time	199732639.184000	199731474.80488			
Observation start date	2004-04-30T17:16:15	2004-04-30T16:57:54			
Observation end time	199740639.184000	199740773.60529			
Observation end date	2004-04-30T19:29:35	2004-04-30T19:32:53			
Read mode	TIMED	TIMED			

### 2.3 Aspect





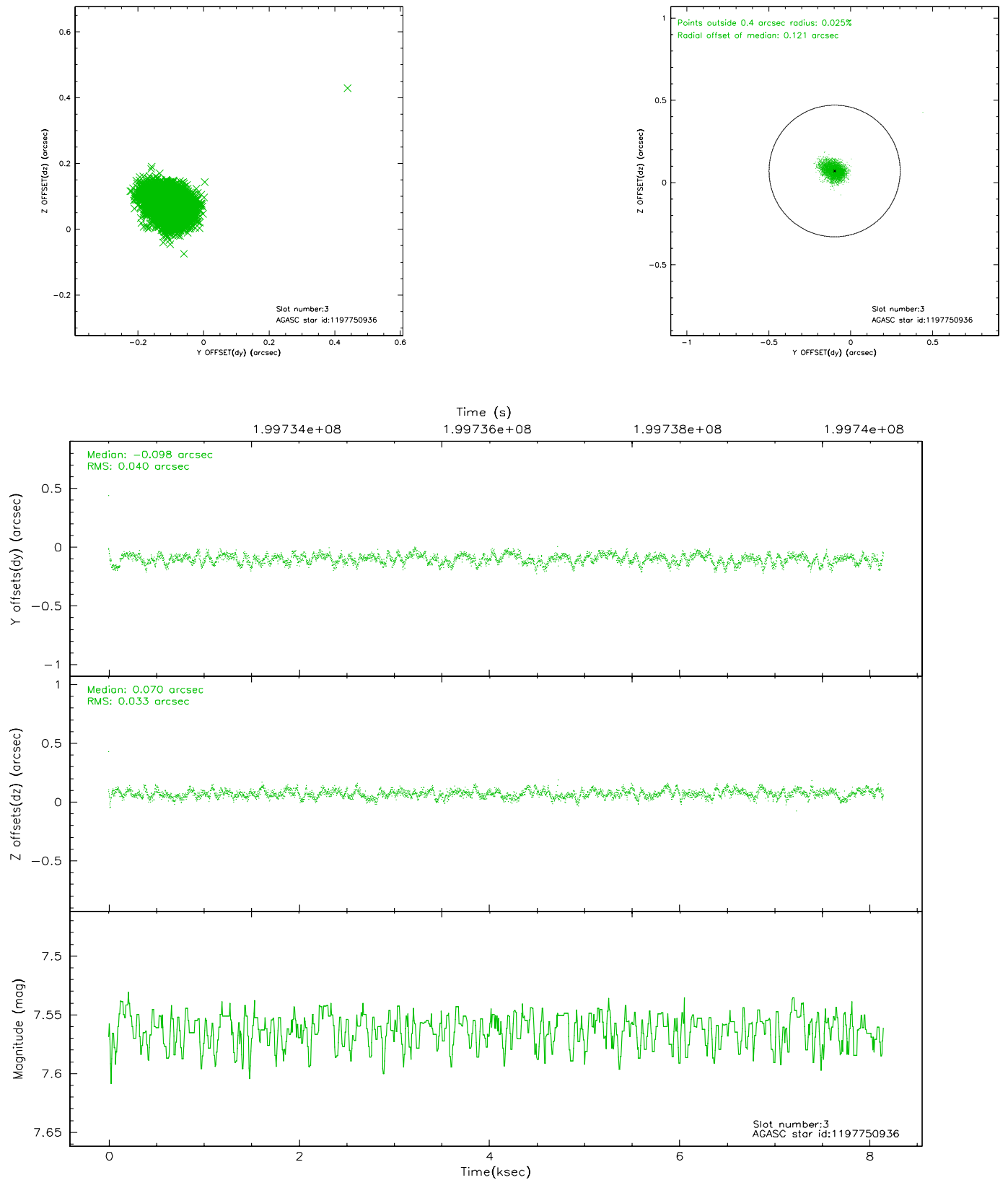
### Slot Statistics

slot	status	id	mag	n_pts	med_dy	med_dz	dr1	dr2	ra	dec	mean_y	mean_z
0	FID	ACIS-I-1	7.24	1989	-0.013	0.075	0.007	0.011	0.000000	0.000000	934.64	-832.61
1	FID	ACIS-I-5	7.23	1989	-0.133	0.027	0.006	0.009	0.000000	0.000000	-1813.22	1064.47
2	FID	ACIS-I-6	7.25	1989	0.054	-0.032	0.008	0.013	0.000000	0.000000	399.49	1709.71
3	GUIDE	1197750936	7.56	3977	-0.098	0.070	0.054	0.087	15.387940	-71.549550	1122.06	-1148.63
4	GUIDE	1197884536	8.50	3976	0.049	0.038	0.063	0.098	17.160729	-71.835289	-1118.12	-913.02
5	GUIDE	1197884712	8.31	3971	0.020	-0.036	0.061	0.096	16.087398	-72.252690	-539.21	914.79
6	GUIDE	1197885328	7.24	3976	0.008	0.076	0.052	0.082	16.283090	-71.733943	-66.10	-904.60
7	GUIDE	1198190968	10.03	3975	0.021	-0.151	0.115	0.187	15.749622	-72.545972	-583.50	2031.79

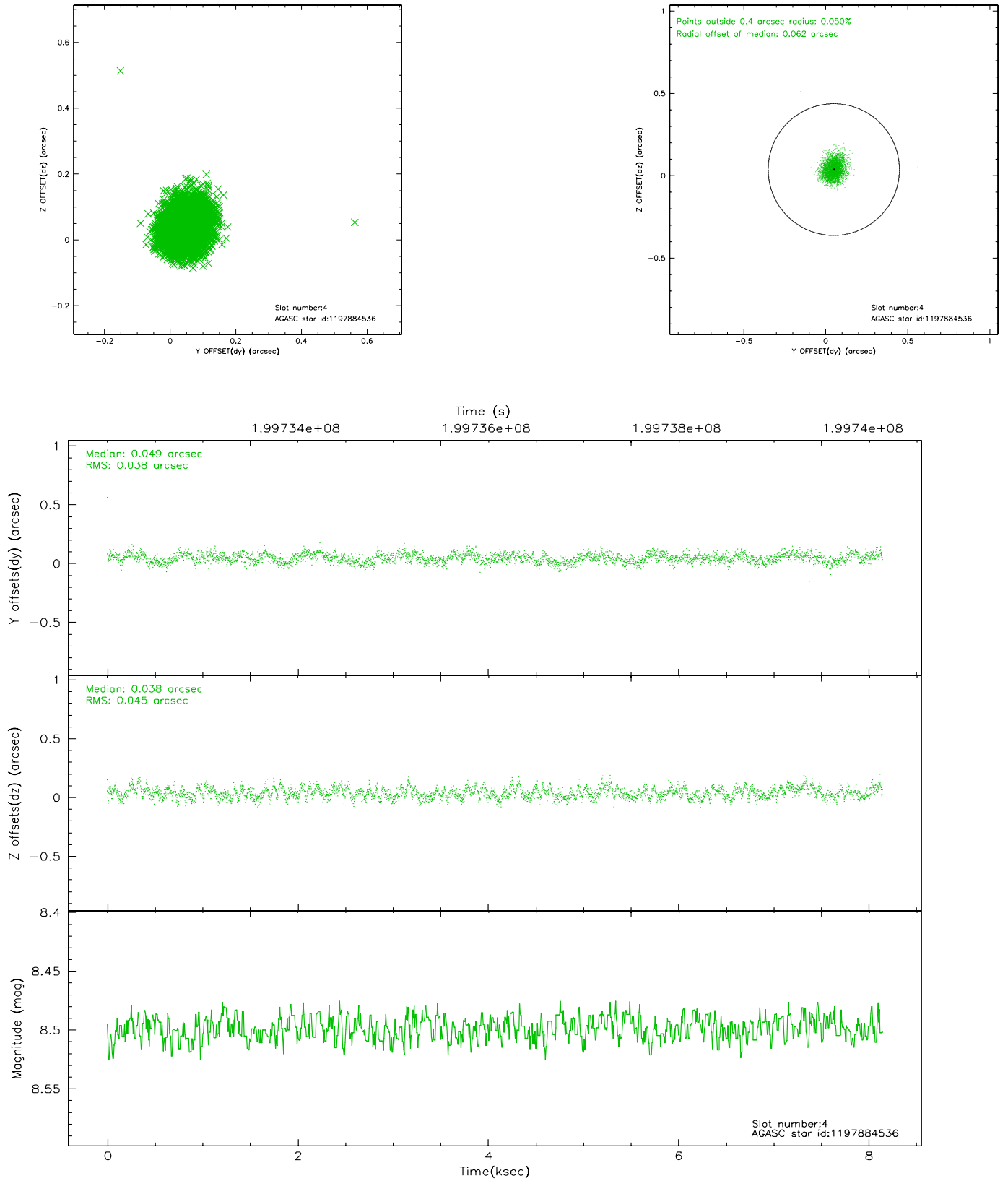


## 2.4 Star Slots

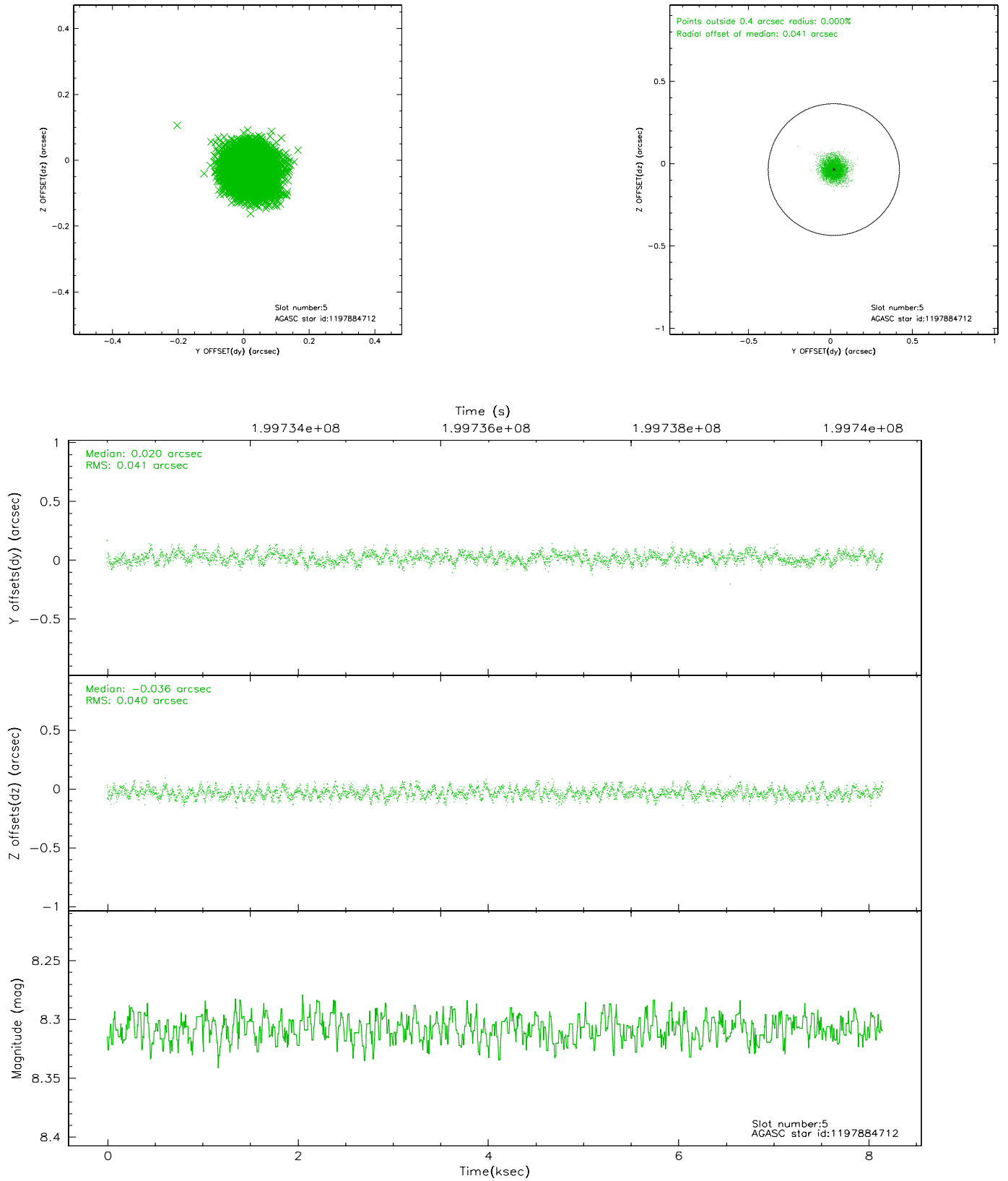
### 2.4.1 Slot 3



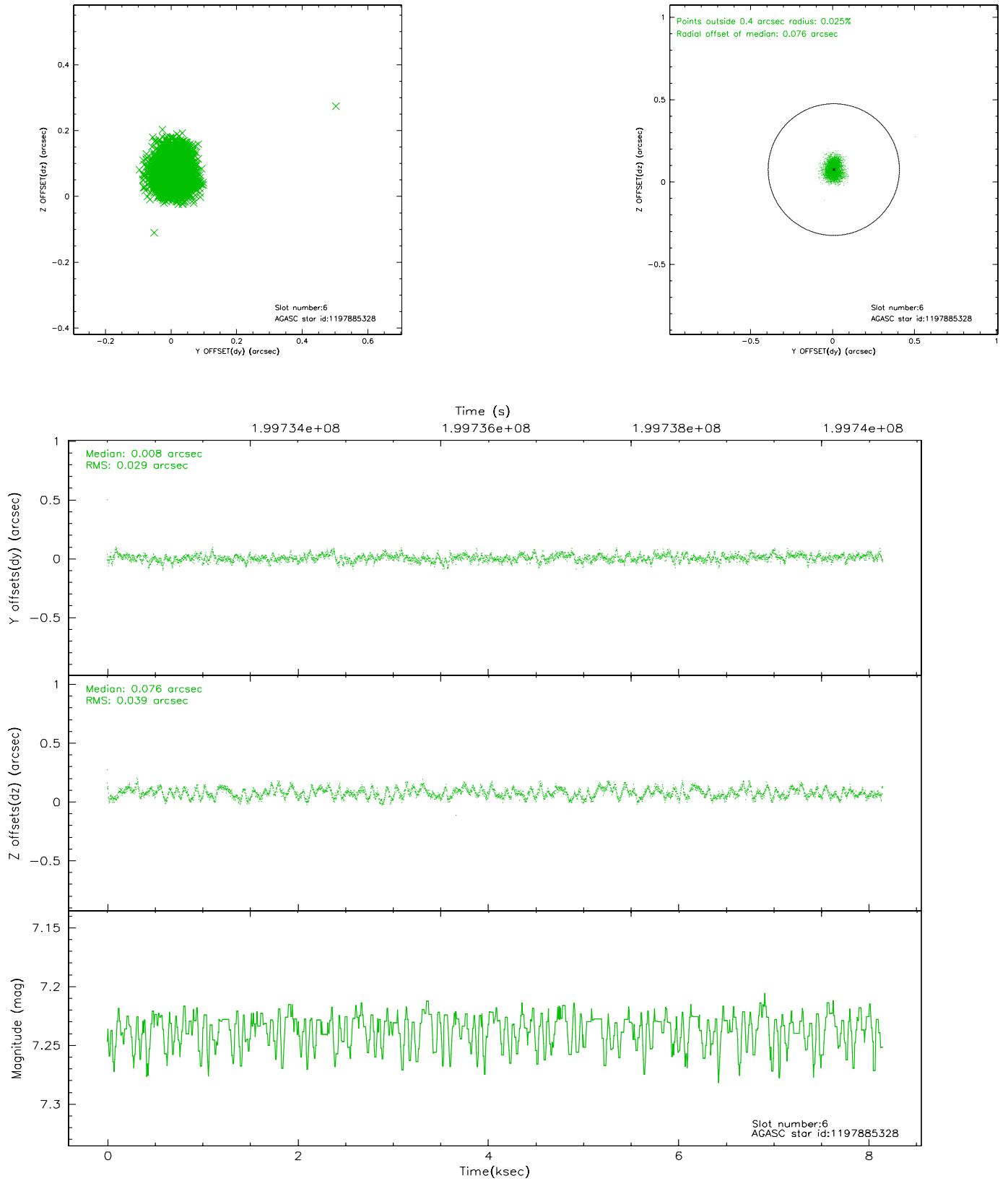
## 2.4.2 Slot 4



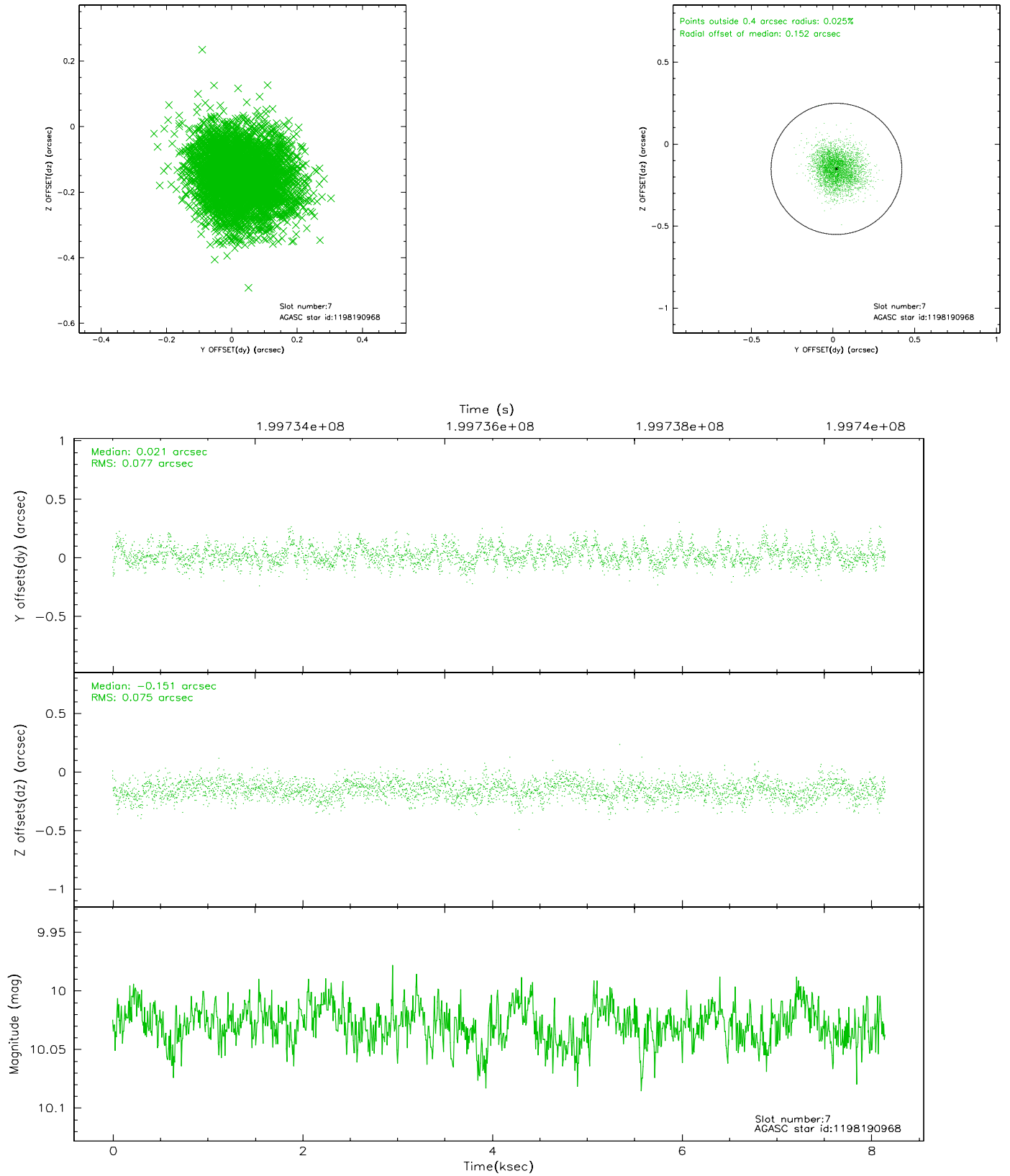
### 2.4.3 Slot 5



## 2.4.4 Slot 6

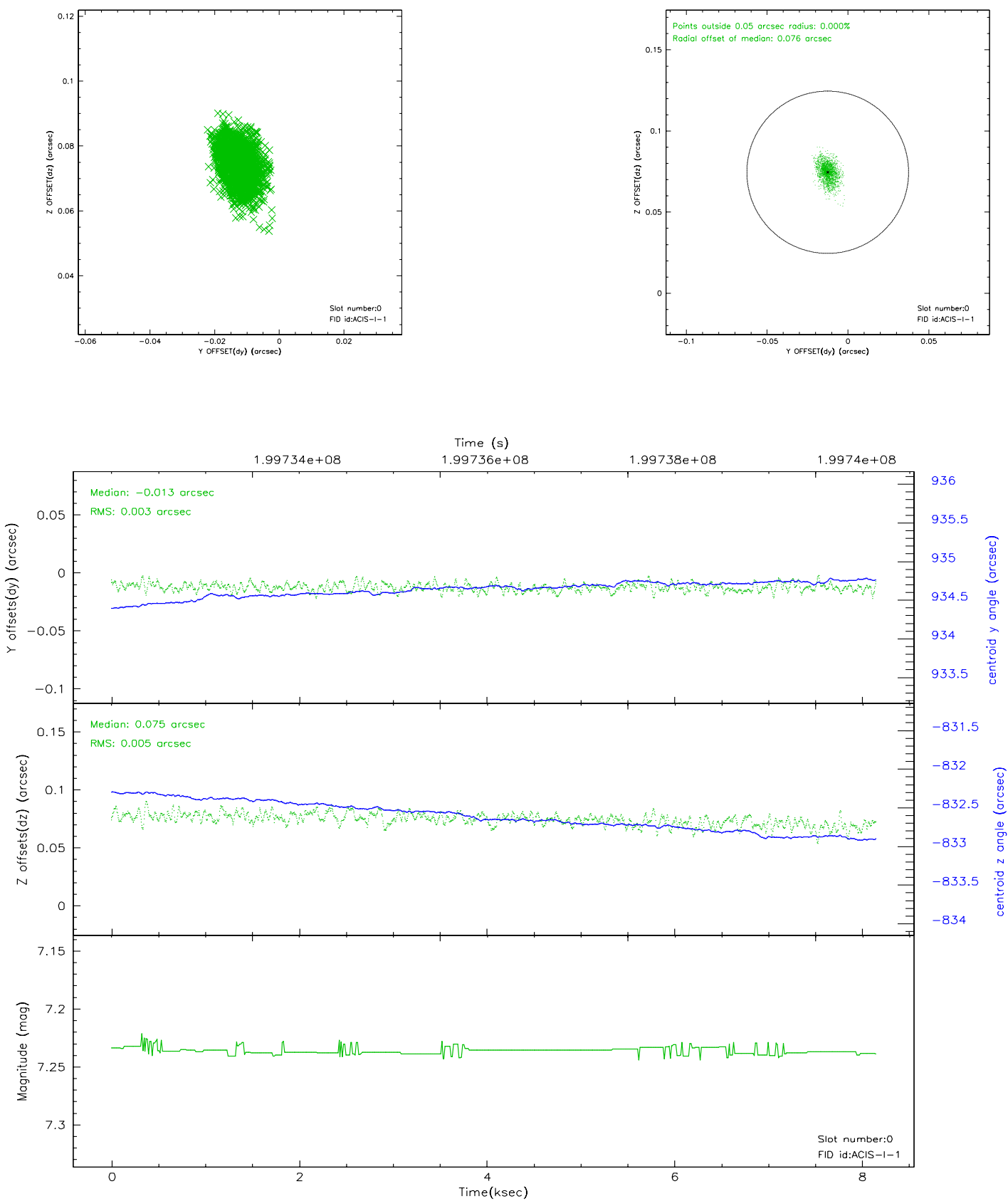


## 2.4.5 Slot 7

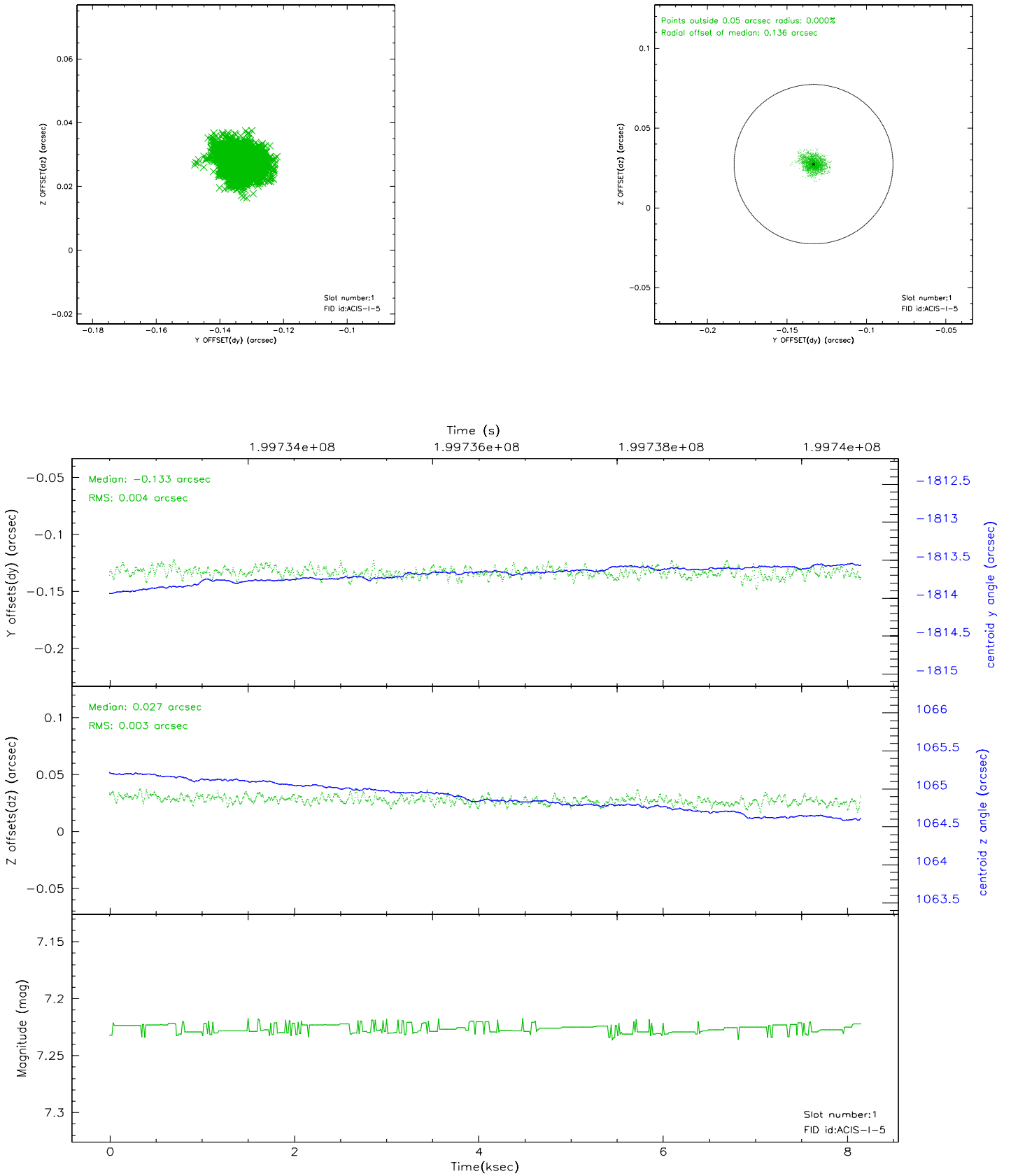


## 2.5 FID Slots

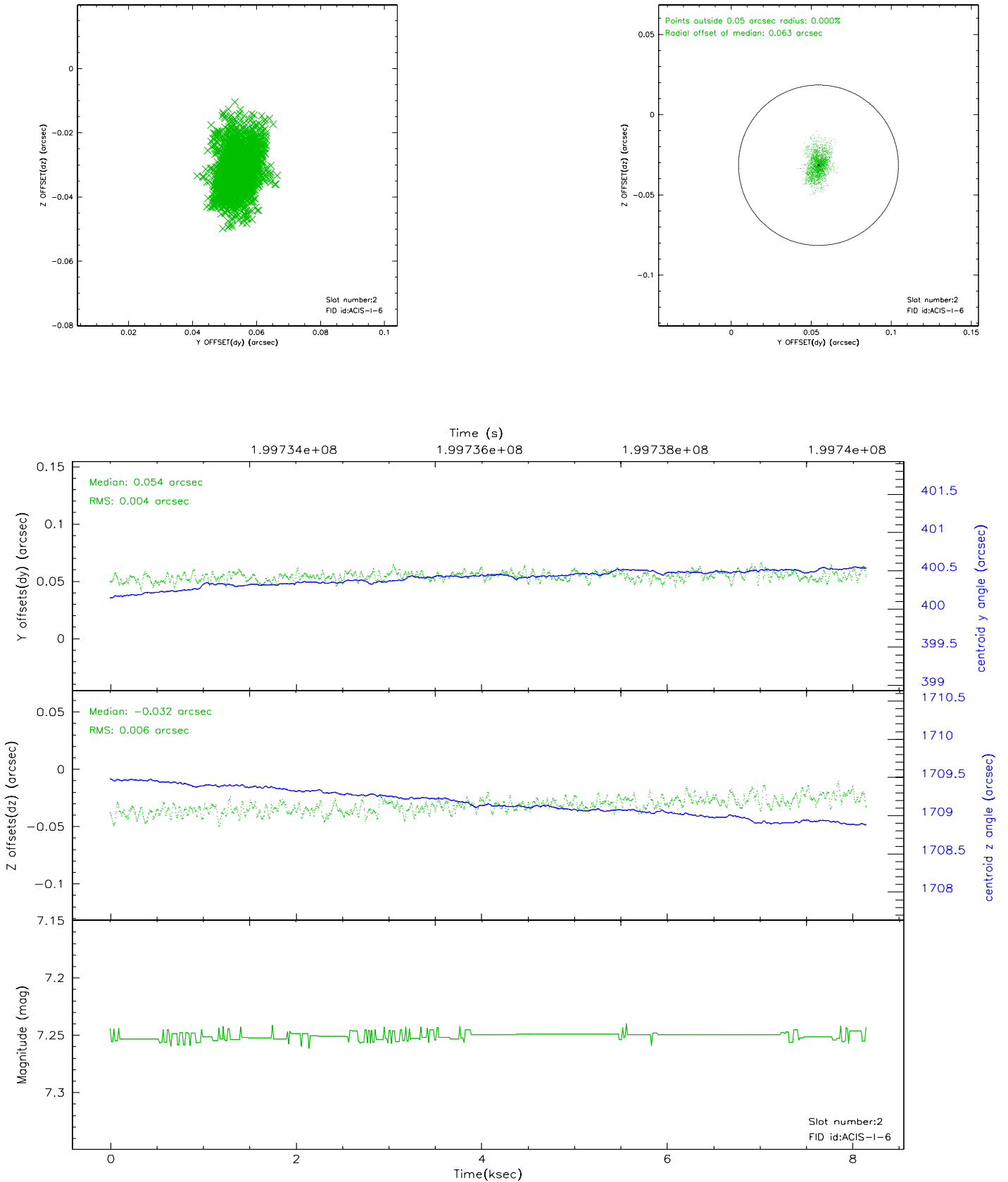
### 2.5.1 Slot 0



## 2.5.2 Slot 1

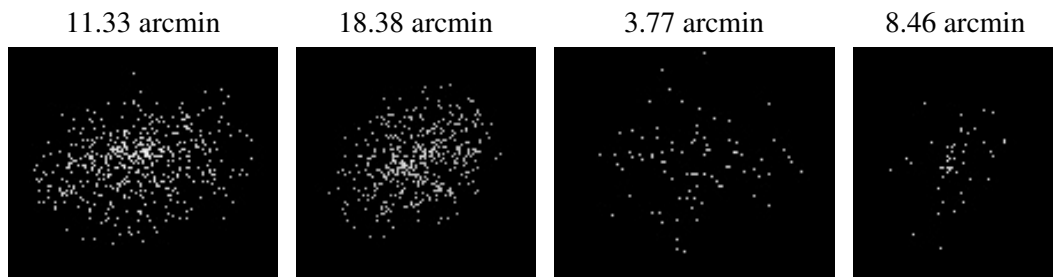


### 2.5.3 Slot 2





### 3 Point Sources



## A Summary

### A.1 Status

V&V Scientist	Beth Sundheim
V&V Date (YYYY-MM-DD)	2006.05.21
V&V Edition	1
V&V Disposition and Status	OK
V&V Charge Time	8.143

### A.2 Comments

Window constraint not satisfied.