

V&V Reference Report

L2 ASCDS Version : 7.6.8

Observation 5129 - L2 Version 001
Chandra X-Ray Center

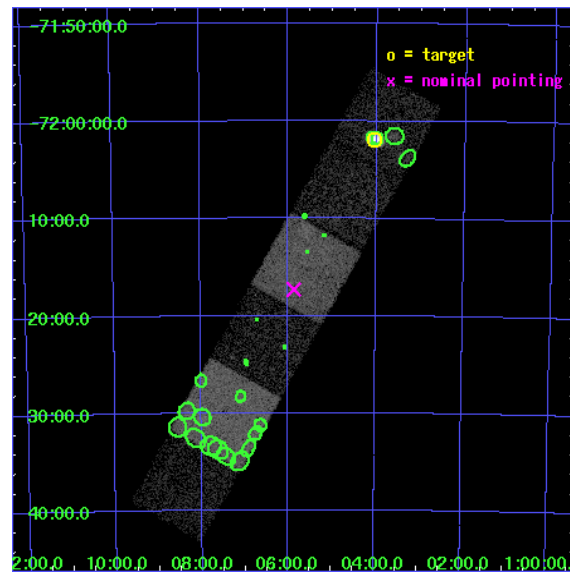
L2 Processing Date : Jun 23 2006

Contents

1	Front	2
2	OBI	3
2.1	OBI	3
2.1.1	Images	3
2.1.2	Bias	3
2.1.3	Parameters	4
2.1.4	Events	4
2.2	Compared Parameters	5
2.3	Aspect	6
2.4	Star Slots	9
2.4.1	Slot 3	9
2.4.2	Slot 4	10
2.4.3	Slot 5	11
2.4.4	Slot 6	12
2.4.5	Slot 7	13
2.5	FID Slots	14
2.5.1	Slot 0	14
2.5.2	Slot 1	15
2.5.3	Slot 2	16
3	Point Sources	17
A	Summary	18
A.1	Status	18
A.2	Comments	18

1 Front

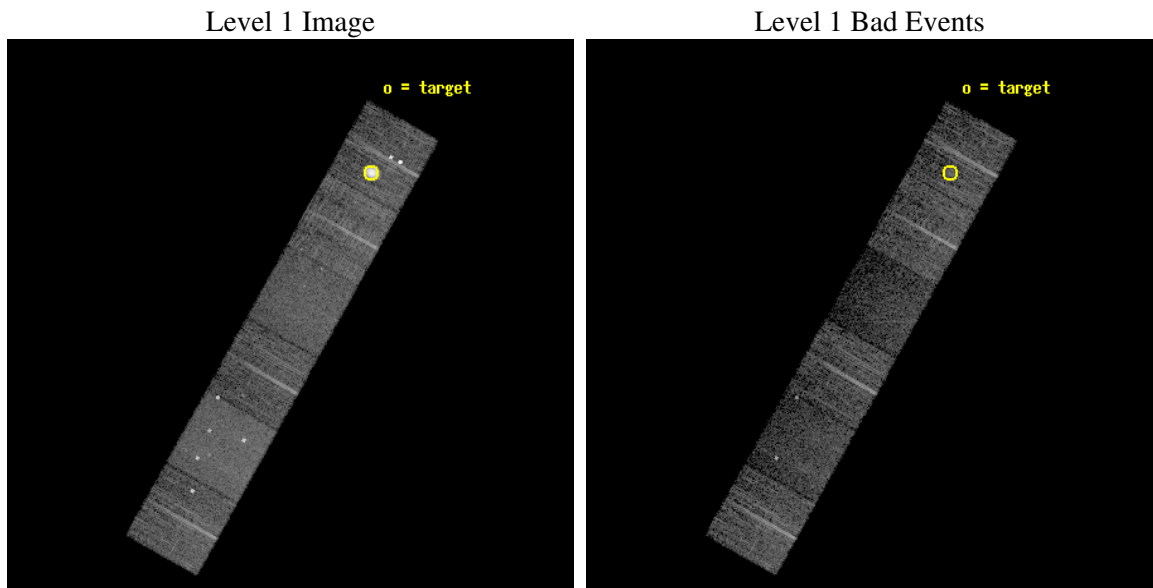
seq_num	590327
obs_id	5129
title	AO5A ACIS-S Calibration Observations of E0102-72
observer	Dr. CXC Calibration
object	E0102-72[S5,-120,-17.29,0,0]
dtcycle	0
cycle	P
ra_targ	16.01
dec_targ	-72.032028
ra_nom	16.466907743178
dec_nom	-72.288441566951
roll_nom	299.33370601177
revision	2
ontime	8009.5999701619
livetime	7908.1775925376
ontime4	8009.1534492075
ontime5	8009.2355292141
ontime6	8009.2765692174
ontime7	8009.1944892108
ontime8	8006.076638937
ontime9	8009.5999701619
l2events	83644



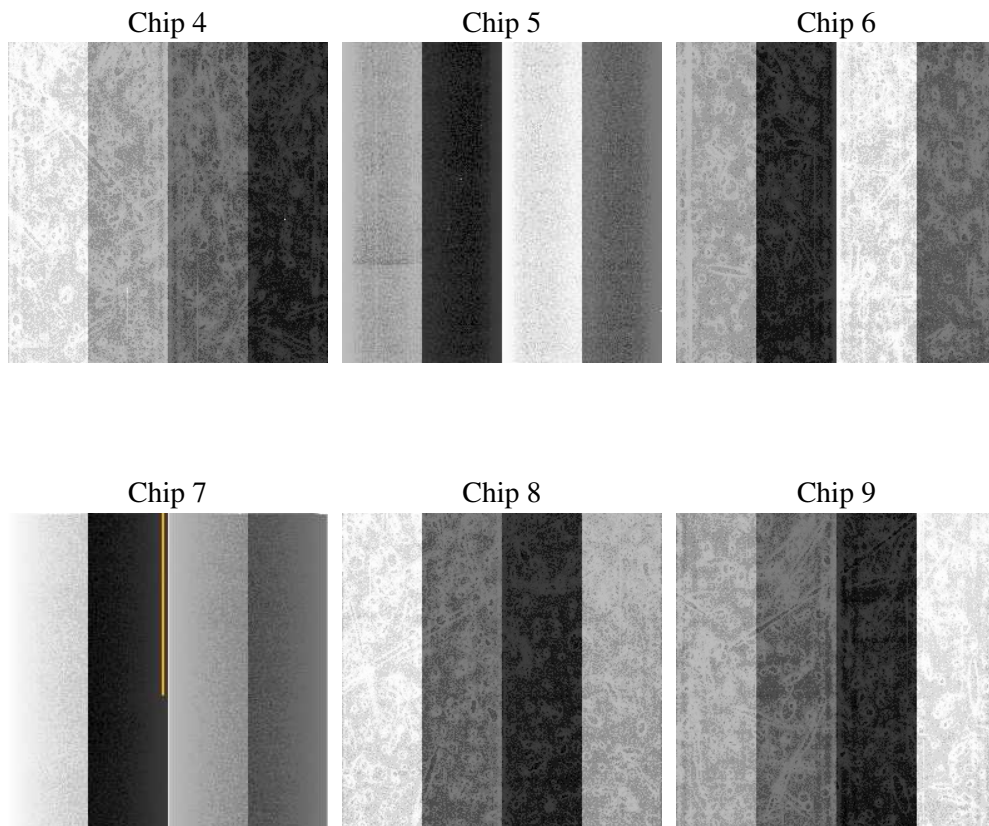
2 OBI

2.1 OBI

2.1.1 Images



2.1.2 Bias



2.1.3 Parameters

obi_num	0
ascdsver	7.6.8
caldbver	3.2.2
date	2006-06-23T19:06:00
revision	2

sched_exp_time	8250.000000
ontime	8014.9958382547
ontime4	8011.7548181713
ontime5	8011.7548181713
ontime6	8011.7548181713
ontime7	8011.7548181713
ontime8	8008.5138478875
ontime9	8014.9958382547
l1events	293122

2.1.4 Events

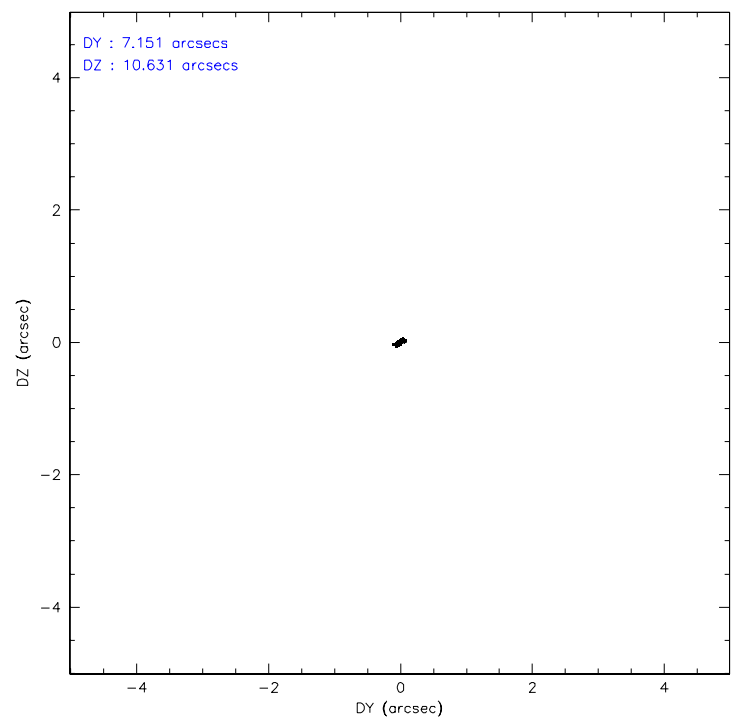
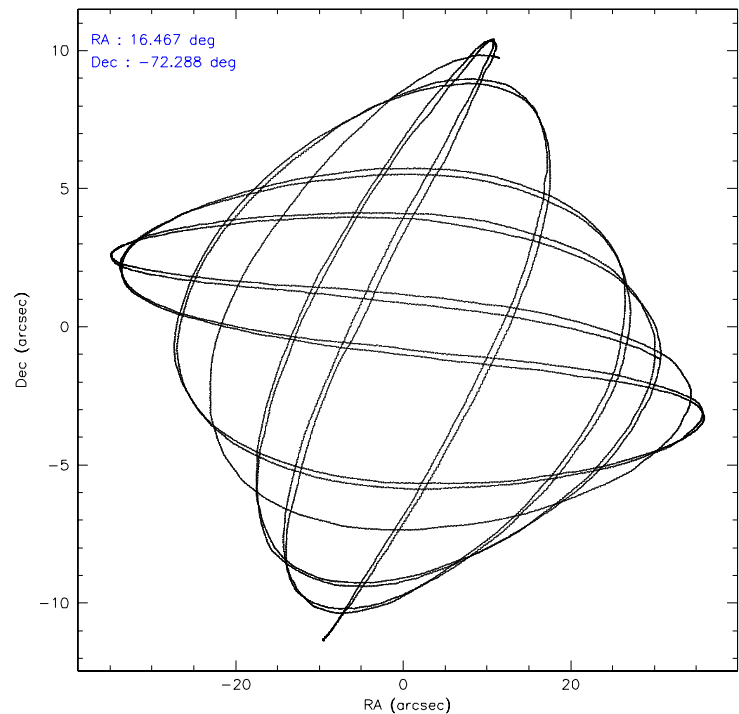
	ccd 4	ccd 5	ccd 6	ccd 7	ccd 8	ccd 9
level 1 events	44527	55154	37226	40882	48785	66548
rejected events	38932	23992	32844	19105	37214	33957
rejected %	87%	43%	88%	46%	76%	51%

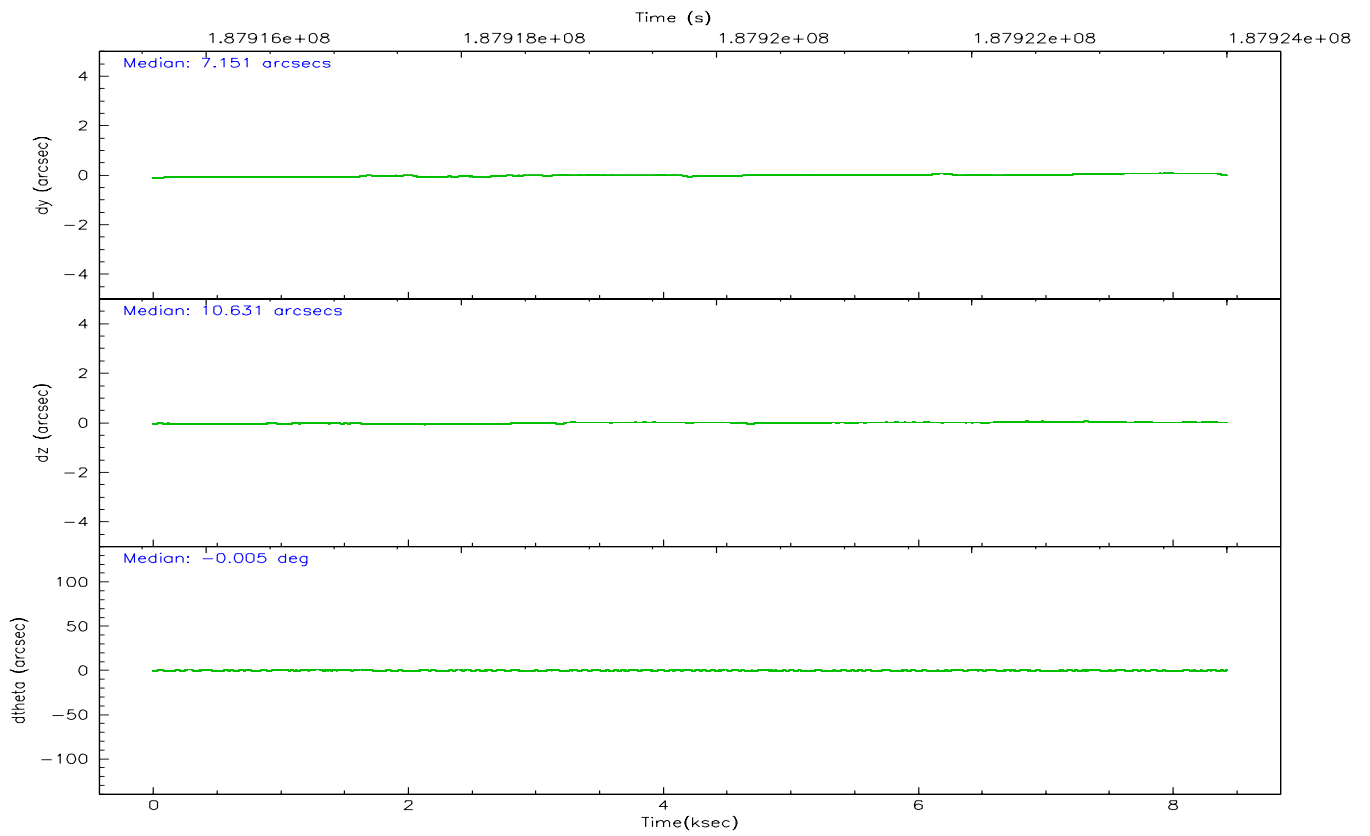
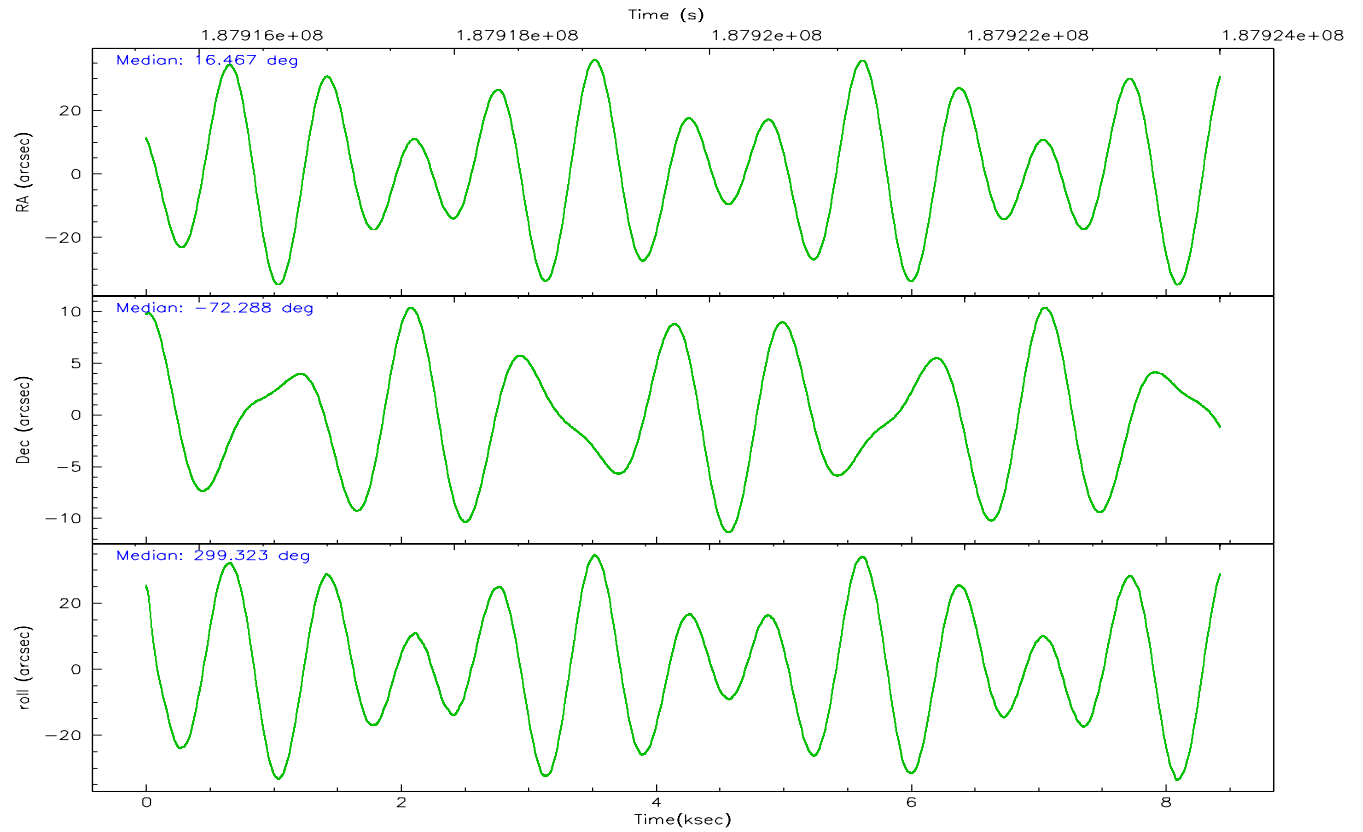
	ccd 4	ccd 5	ccd 6	ccd 7	ccd 8	ccd 9
grade 0 events	3196	4854	1877	1958	3610	28005
	7%	8%	5%	4%	7%	42%
grade 1 events	37	587	22	15	30	126
	0%	1%	0%	0%	0%	0%
grade 2 events	924	9274	873	5319	2485	2242
	2%	16%	2%	13%	5%	3%
grade 3 events	429	992	415	1357	1252	737
	0%	1%	1%	3%	2%	1%
grade 4 events	440	931	413	1352	1116	740
	0%	1%	1%	3%	2%	1%
grade 5 events	1233	2858	1336	2852	1931	1464
	2%	5%	3%	6%	3%	2%
grade 6 events	606	15122	806	11796	3108	894
	1%	27%	2%	28%	6%	1%
grade 7 events	37662	20536	31484	16233	35253	32340
	84%	37%	84%	39%	72%	48%

2.2 Compared Parameters

Parameter	Planned	Actual	Parameter	Planned	Actual
Instrument	ACIS	ACIS	Obspar format version number	6	6
Detector	ACIS-456789	ACIS-456789	Obspar file type	PREDICTED	ACTUAL
Grating	NONE	NONE	Obspar update status	NONE	UPDATED
Data mode	VFAINT	VFAINT	On-chip summing requested	N	N
Observation mode	POINTING	POINTING	Subarray requested	NONE	NONE
Pointing RA	16.389495	16.46690774317753	Alternating exposures requested	N	N
Pointing Dec	-72.274914	-72.28844156695111	Primary exposure time	0.000000	3.2
Pointing Roll	299.103344	299.3337060117725			
Window start time	181353664.184000	181353664.184000			
Window stop time	189216064.184000	189216064.184000			
SIM focus pos (mm)	-0.684267	-0.6828225247311905			
SIM defocus (mm)	0	0.001444936568705701			
SIM translation stage pos (mm)	-190.132523	-190.1400660498719			
SIM translation stage offset (mm)	0	0.00754346686406393			
Observation start time	187915758.184000	187915382.93765			
Observation start date	2003-12-15T22:48:14	2003-12-15T22:43:02			
Observation end time	187924008.184000	187924142.58803			
Observation end date	2003-12-16T01:05:44	2003-12-16T01:09:02			
Read mode	TIMED	TIMED			

2.3 Aspect



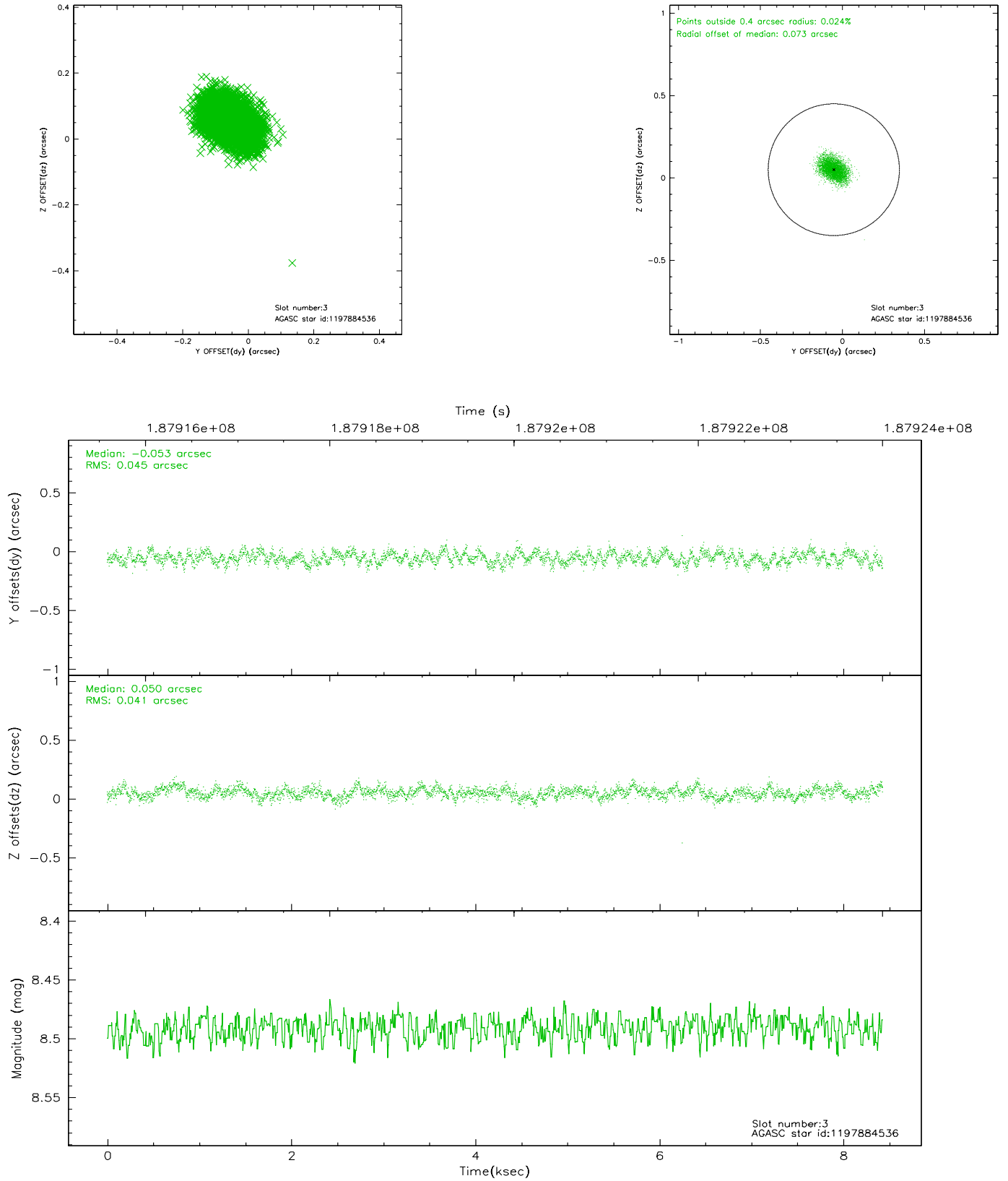


Slot Statistics

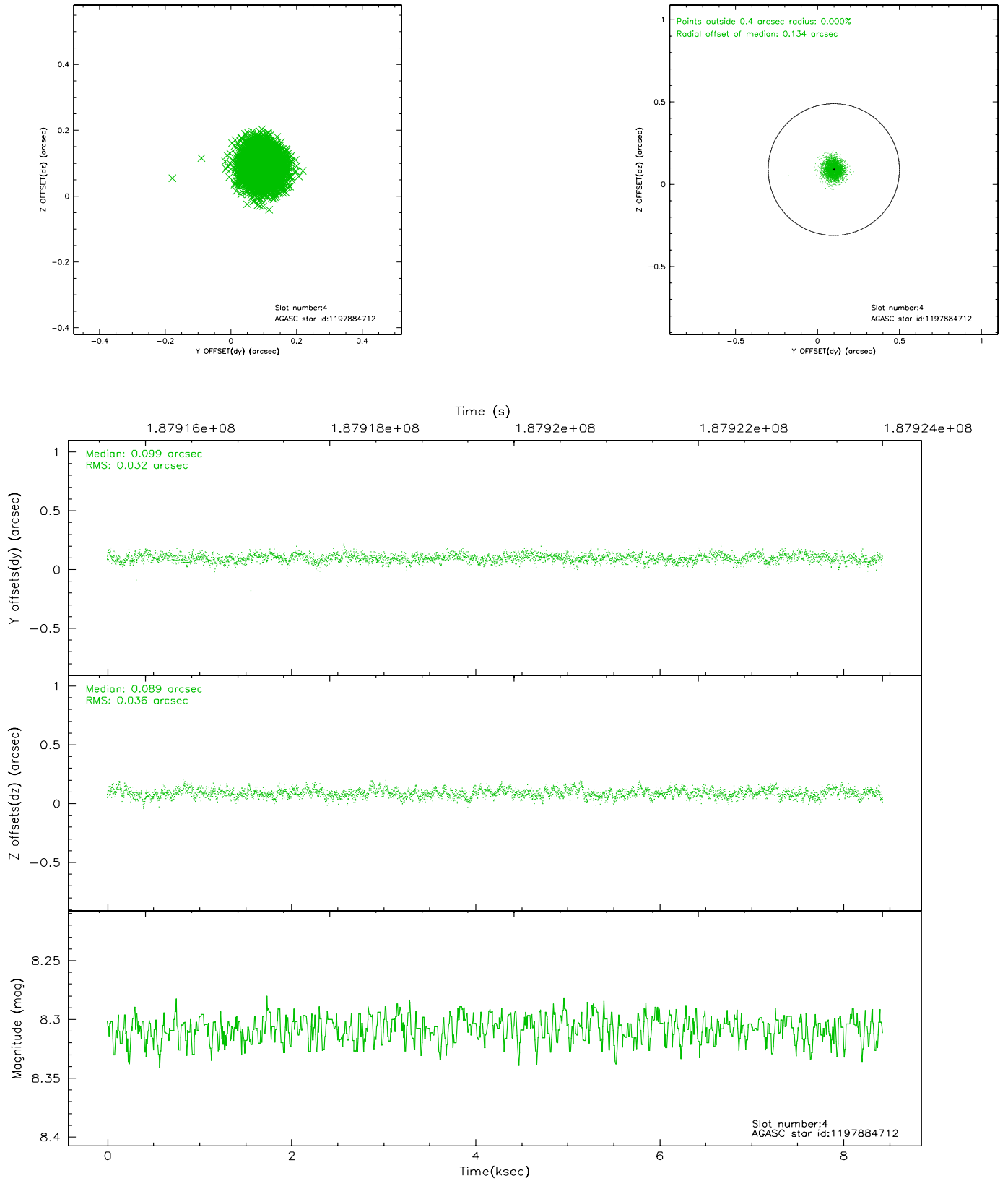
slot	status	id	mag	n_pts	med_dy	med_dz	dr1	dr2	ra	dec	mean_y	mean_z
0	FID	ACIS-S-2	7.10	2056	-0.029	0.023	0.006	0.010	0.000000	0.000000	-759.89	-1731.88
1	FID	ACIS-S-4	7.20	2055	0.008	0.008	0.005	0.009	0.000000	0.000000	2153.09	175.95
2	FID	ACIS-S-5	7.23	2056	-0.010	-0.022	0.006	0.011	0.000000	0.000000	-1811.90	170.28
3	GUIDE	1197884536	8.49	4113	-0.053	0.050	0.065	0.106	17.160729	-71.835289	-956.90	1523.48
4	GUIDE	1197884712	8.31	4113	0.099	0.089	0.052	0.082	16.087398	-72.252690	-230.04	-250.47
5	GUIDE	1197885104	9.34	4111	0.086	-0.047	0.109	0.190	17.845067	-72.189368	527.70	1540.62
6	GUIDE	1197885328	7.22	4113	-0.056	-0.106	0.051	0.081	16.283090	-71.733943	-1759.53	842.95
7	GUIDE	1198189696	7.37	4112	-0.072	0.011	0.053	0.085	15.223750	-72.697522	733.19	-1835.76

2.4 Star Slots

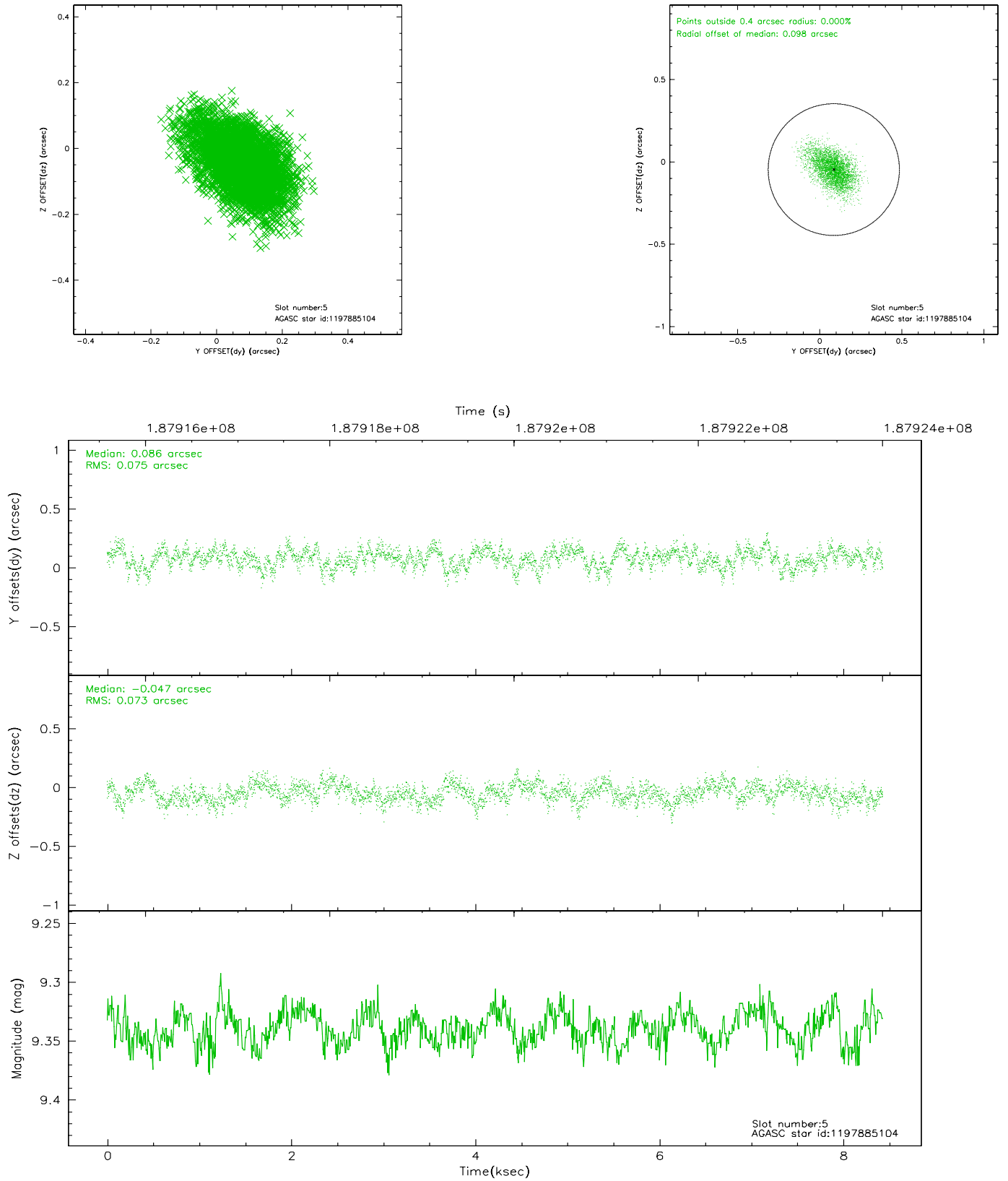
2.4.1 Slot 3



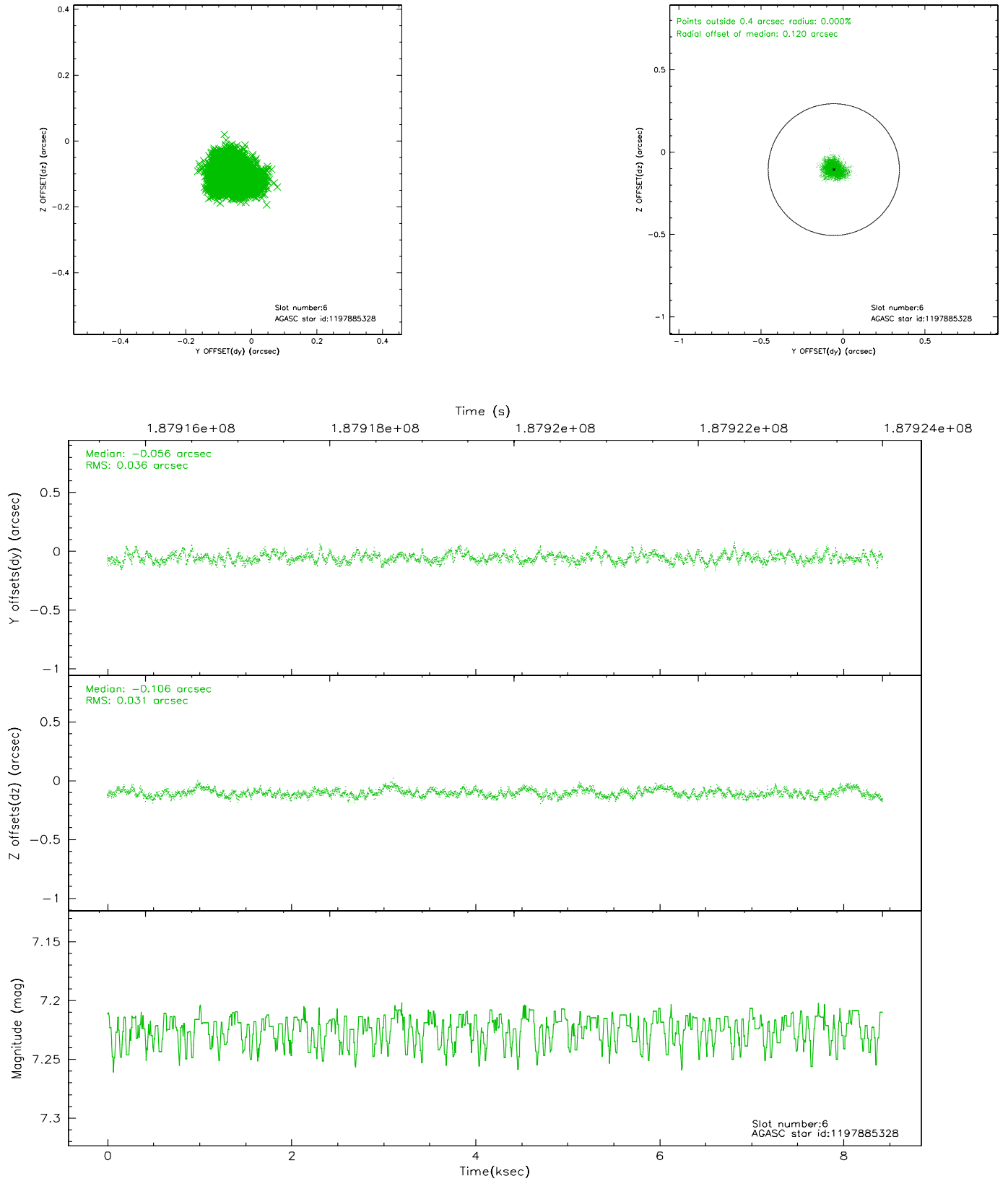
2.4.2 Slot 4



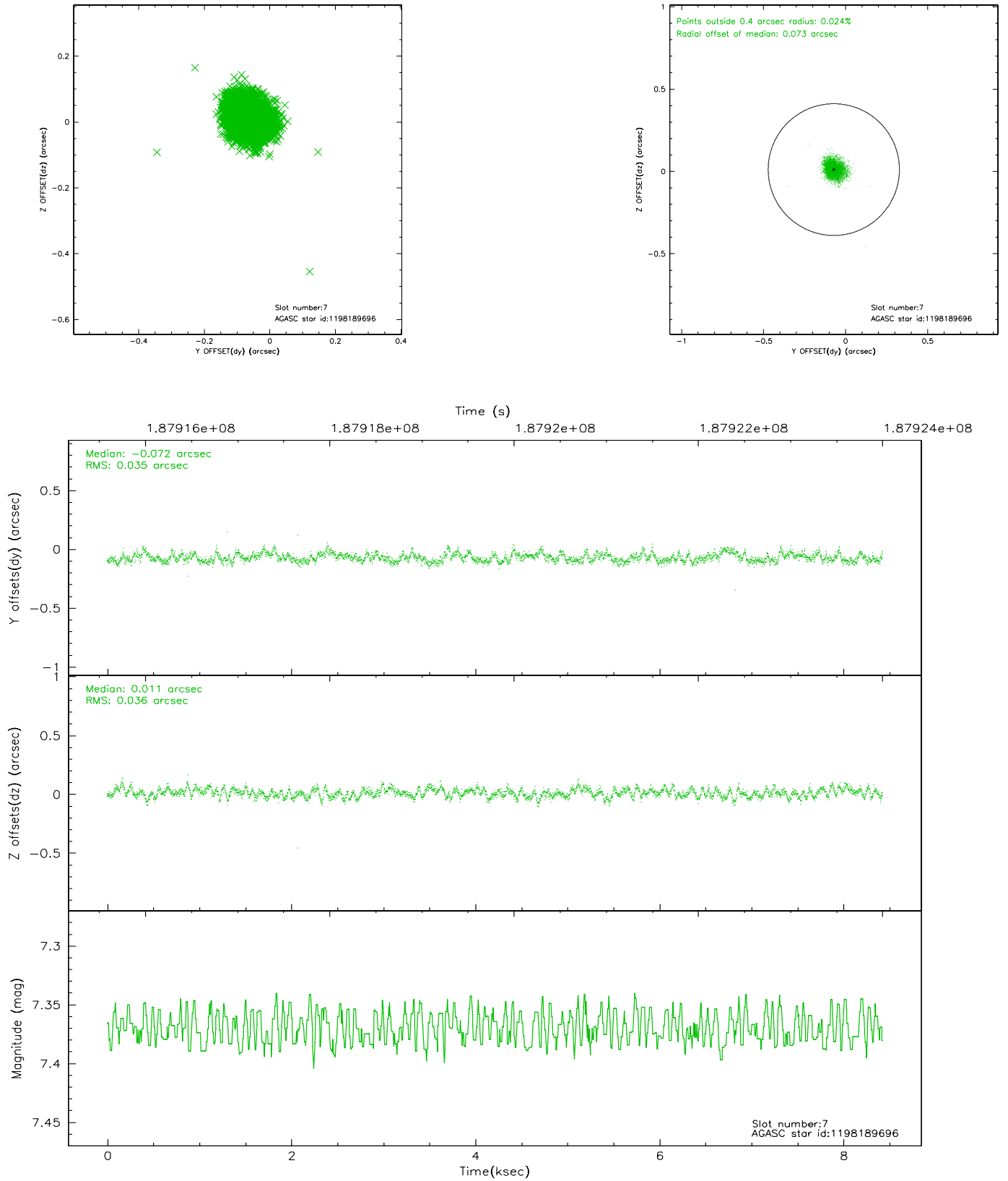
2.4.3 Slot 5



2.4.4 Slot 6

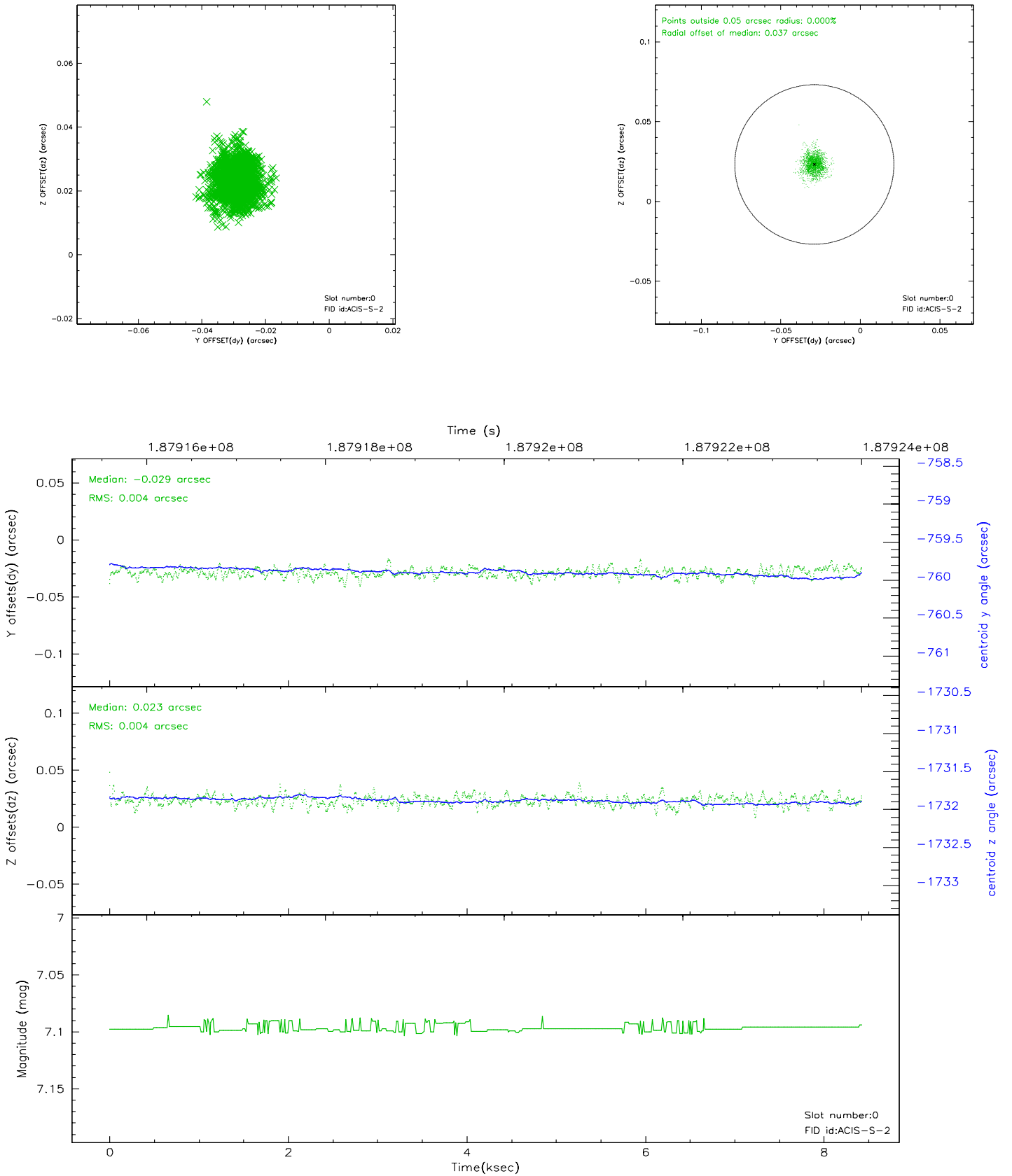


2.4.5 Slot 7

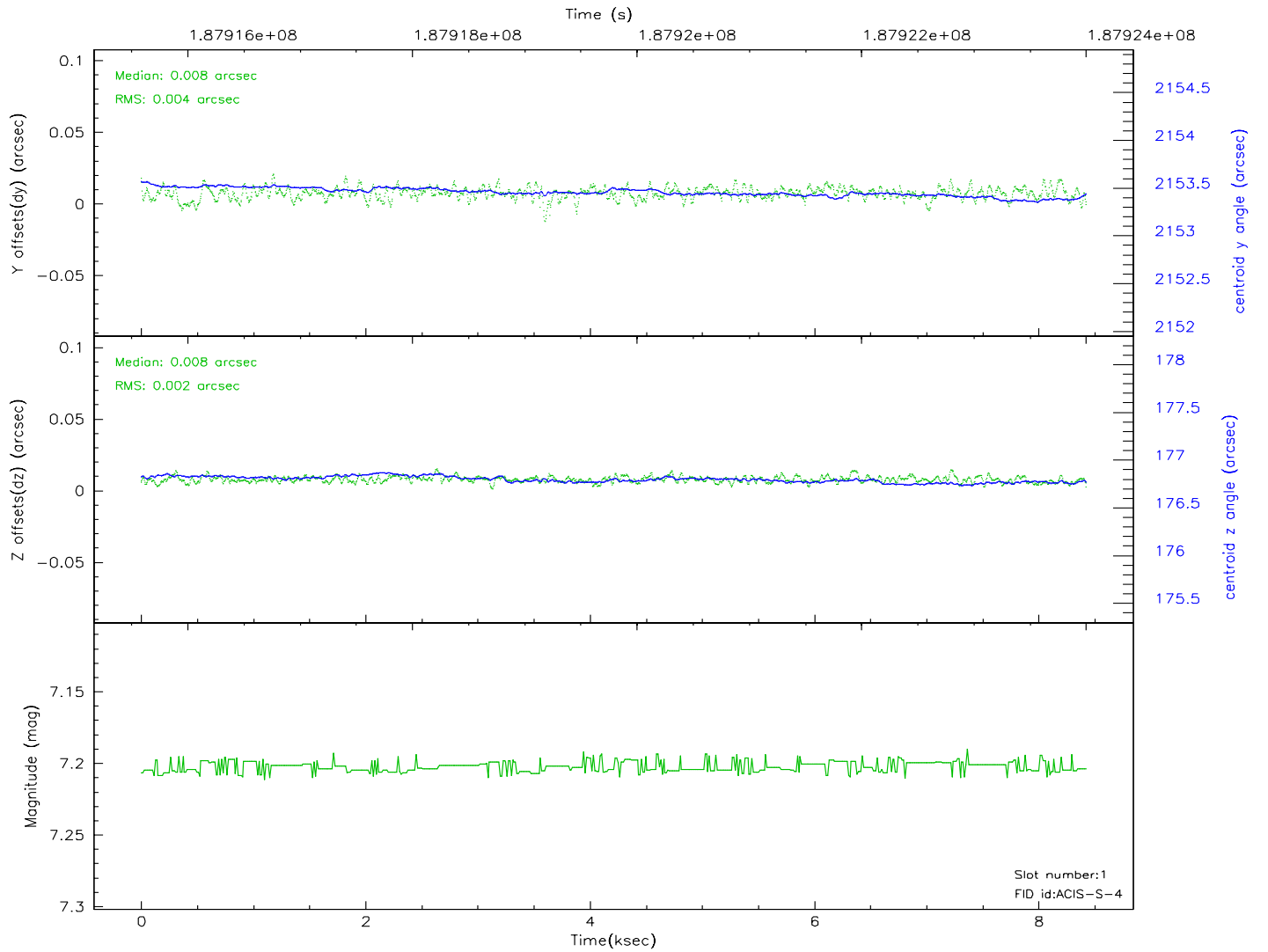
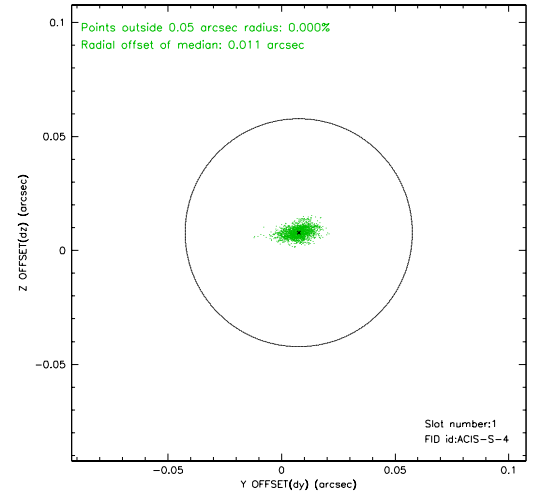
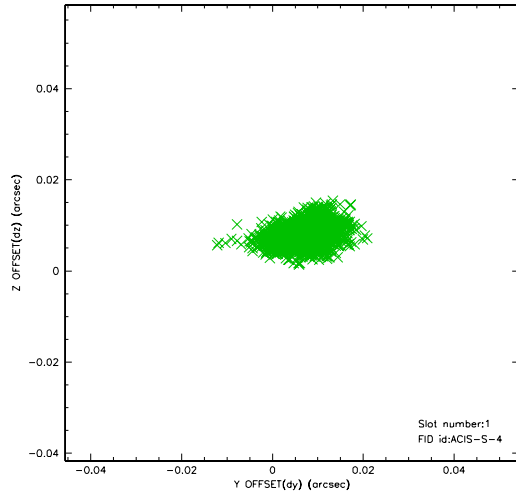


2.5 FID Slots

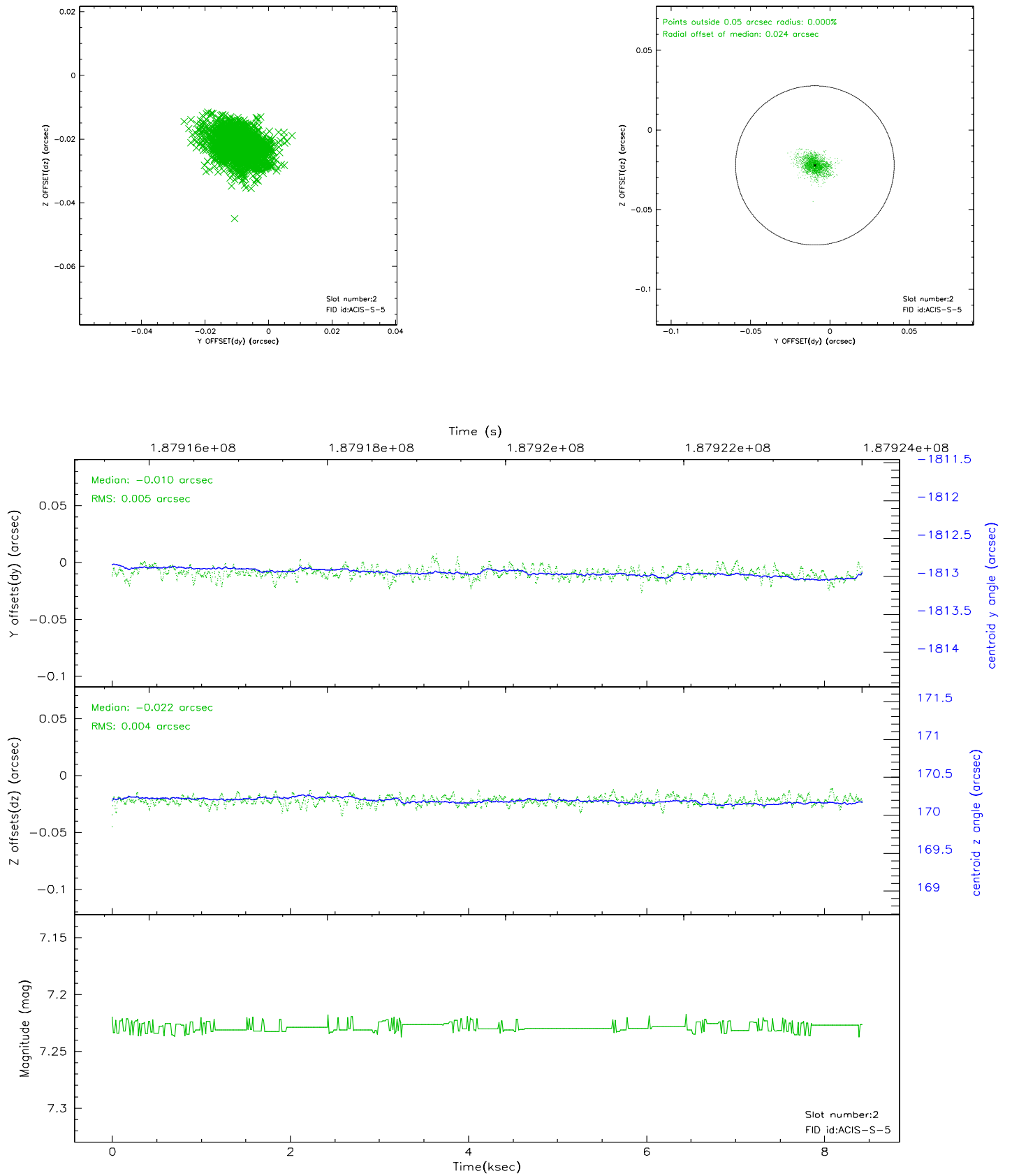
2.5.1 Slot 0



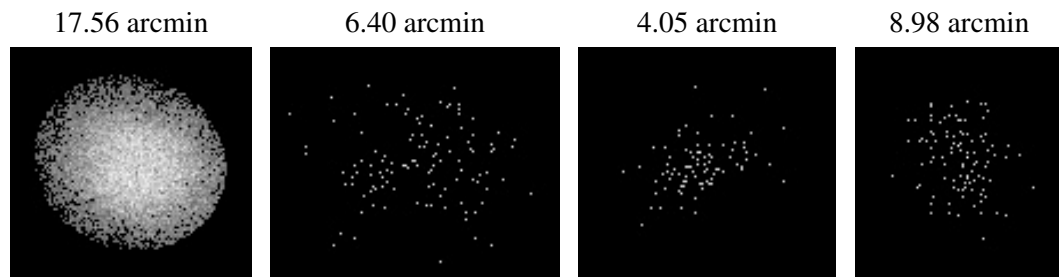
2.5.2 Slot 1



2.5.3 Slot 2



3 Point Sources



A Summary

A.1 Status

V&V Scientist	Jen Lauer
V&V Date (YYYY-MM-DD)	2006.06.26
V&V Edition	1
V&V Disposition and Status	OK
V&V Charge Time	8.012

A.2 Comments

Window constraint met. Source is off-axis, and therefore extended and asymmetric.