

V&V Reference Report

L2 ASCDS Version : 7.6.8

Observation 5126 - L2 Version 001
Chandra X-Ray Center

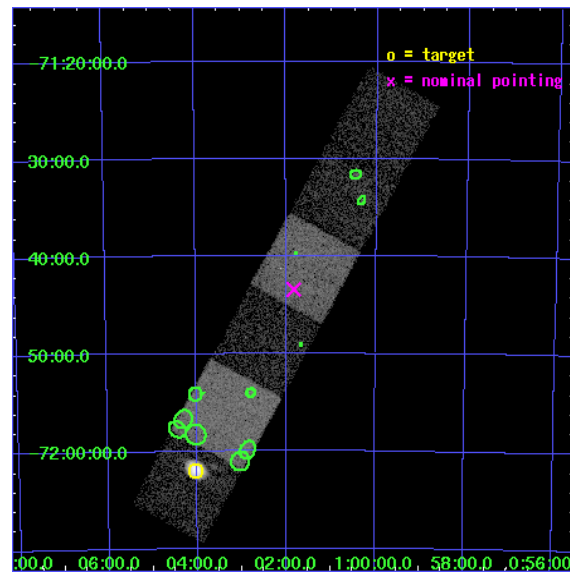
L2 Processing Date : Jun 23 2006

Contents

1	Front	2
2	OBI	3
2.1	OBI	3
2.1.1	Images	3
2.1.2	Bias	3
2.1.3	Parameters	4
2.1.4	Events	4
2.2	Compared Parameters	5
2.3	Aspect	6
2.4	Star Slots	9
2.4.1	Slot 3	9
2.4.2	Slot 4	10
2.4.3	Slot 5	11
2.4.4	Slot 6	12
2.4.5	Slot 7	13
2.5	FID Slots	14
2.5.1	Slot 0	14
2.5.2	Slot 1	15
2.5.3	Slot 2	16
3	Point Sources	17
A	Summary	18
A.1	Status	18
A.2	Comments	18

1 Front

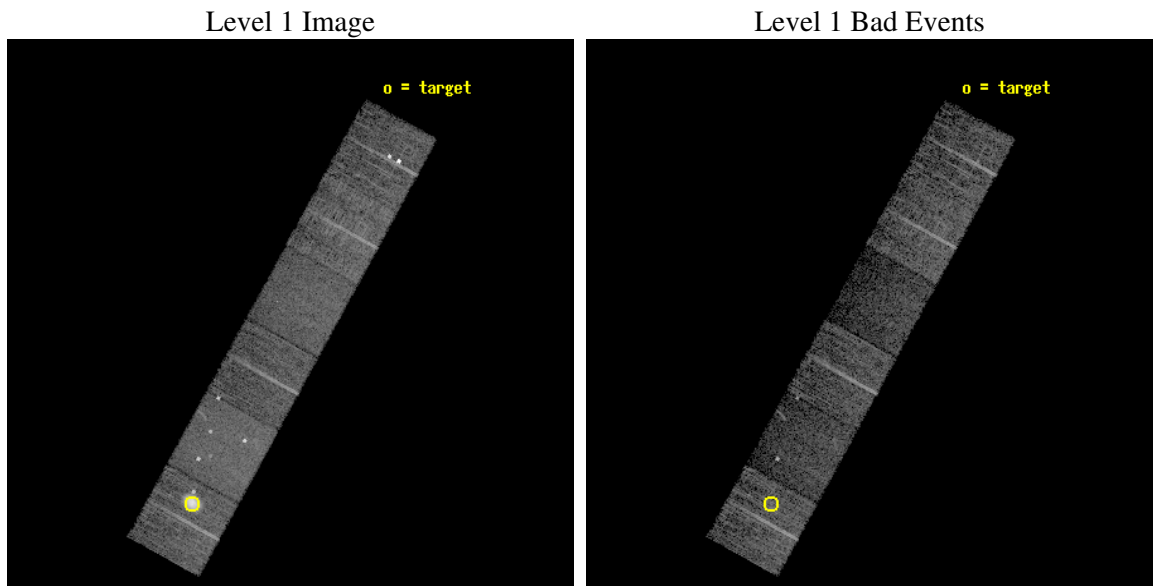
seq_num	590324
obs_id	5126
title	AO5A ACIS-S Calibration Observations of E0102-72
observer	Dr. CXC Calibration
object	E0102-72[S0,-120,21.44,0,0]
dtcycle	0
cycle	P
ra_targ	16.01
dec_targ	-72.032028
ra_nom	15.455382555346
dec_nom	-71.723607825018
roll_nom	298.84218135993
revision	2
ontime	8009.5999701619
livetime	7908.1775925376
ontime4	8009.5999701619
ontime5	8009.5999701619
ontime6	8009.5999701619
ontime7	8009.5999701619
ontime8	8006.358999908
ontime9	8009.5999701619
l2events	75664



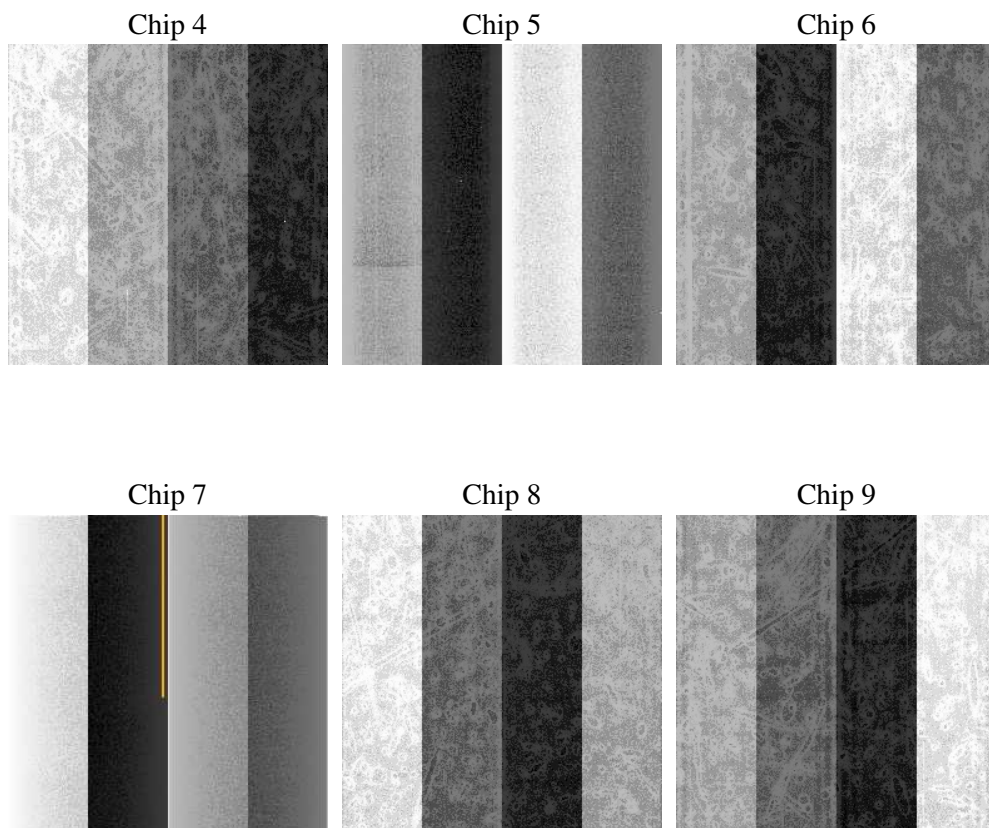
2 OBI

2.1 OBI

2.1.1 Images



2.1.2 Bias



2.1.3 Parameters

obi_num	0
ascdsver	7.6.8
caldsver	3.2.2
date	2006-06-23T17:06:16
revision	2

sched_exp_time	8250.000000
ontime	8014.9957683086
ontime4	8014.9957683086
ontime5	8014.9957683086
ontime6	8014.9957683086
ontime7	8014.9957683086
ontime8	8011.7547980547
ontime9	8014.9957683086
l1events	284281

2.1.4 Events

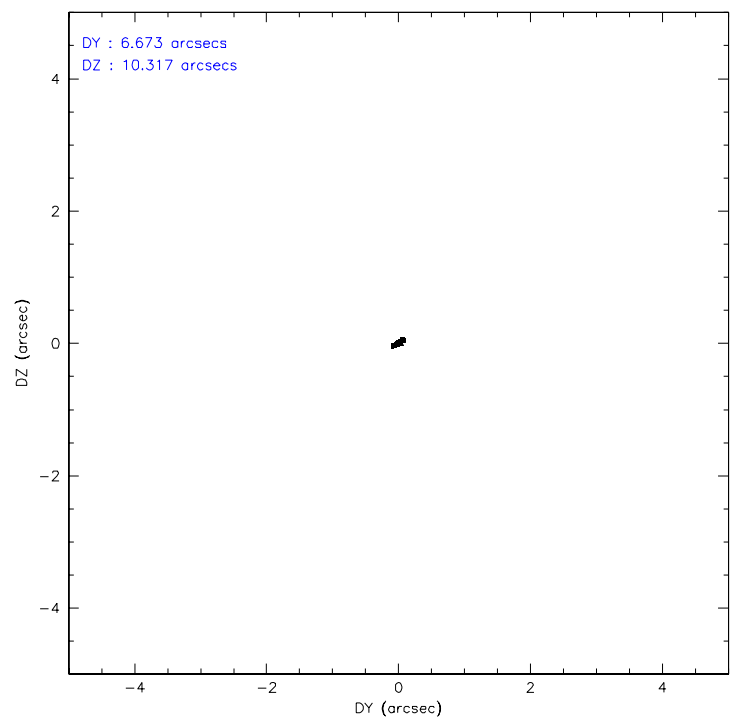
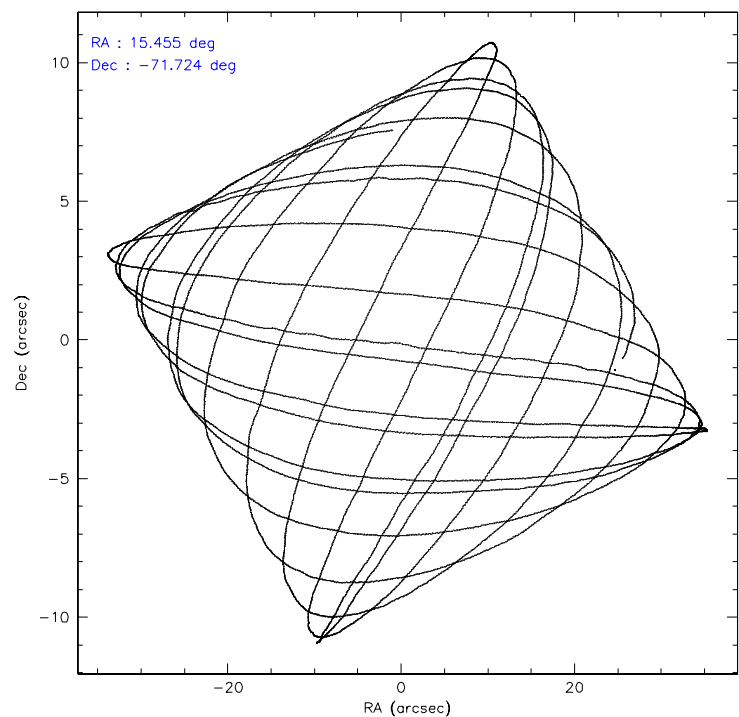
	ccd 4	ccd 5	ccd 6	ccd 7	ccd 8	ccd 9
level 1 events	62605	53359	37272	39128	48811	43106
rejected events	38900	23599	33154	19596	38019	31869
rejected %	62%	44%	88%	50%	77%	73%

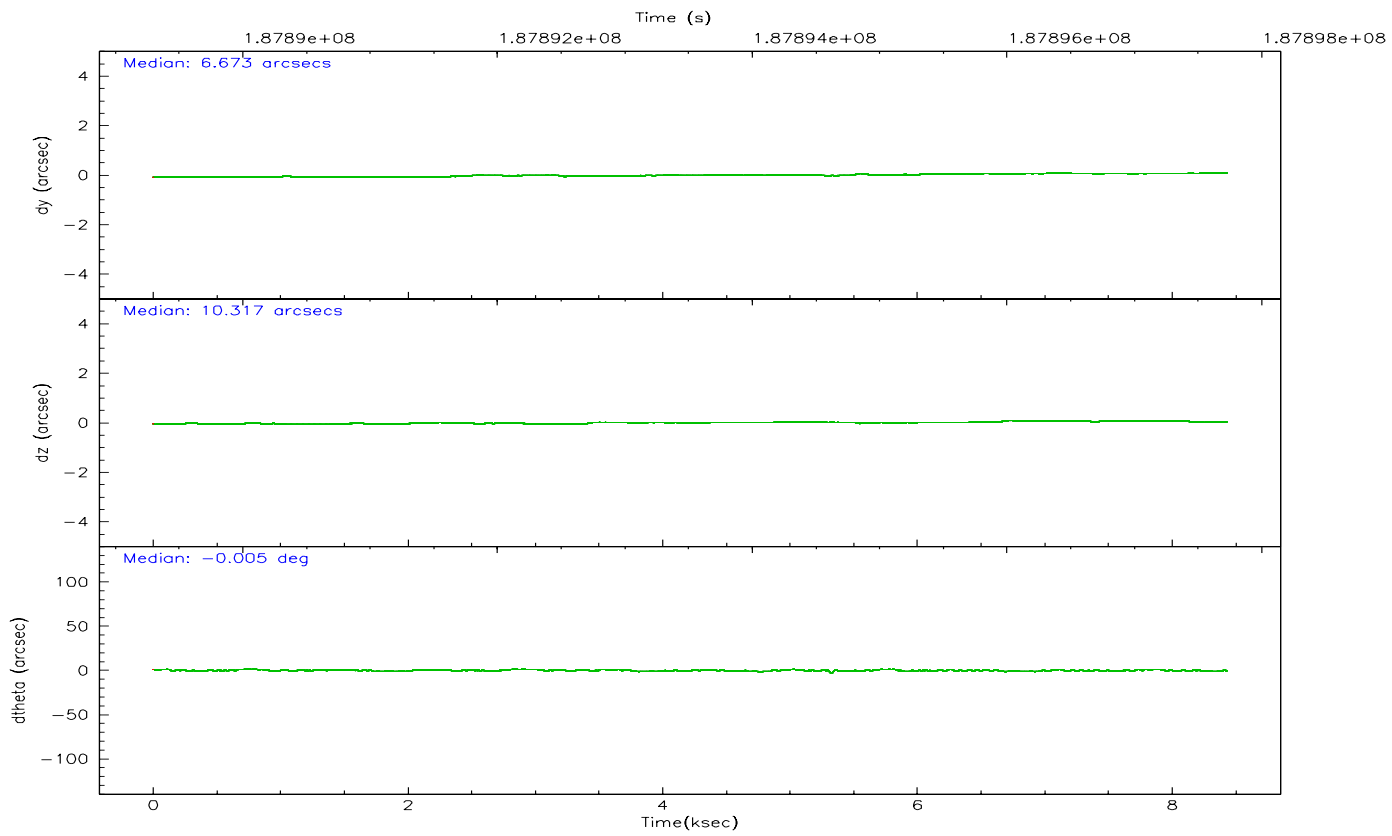
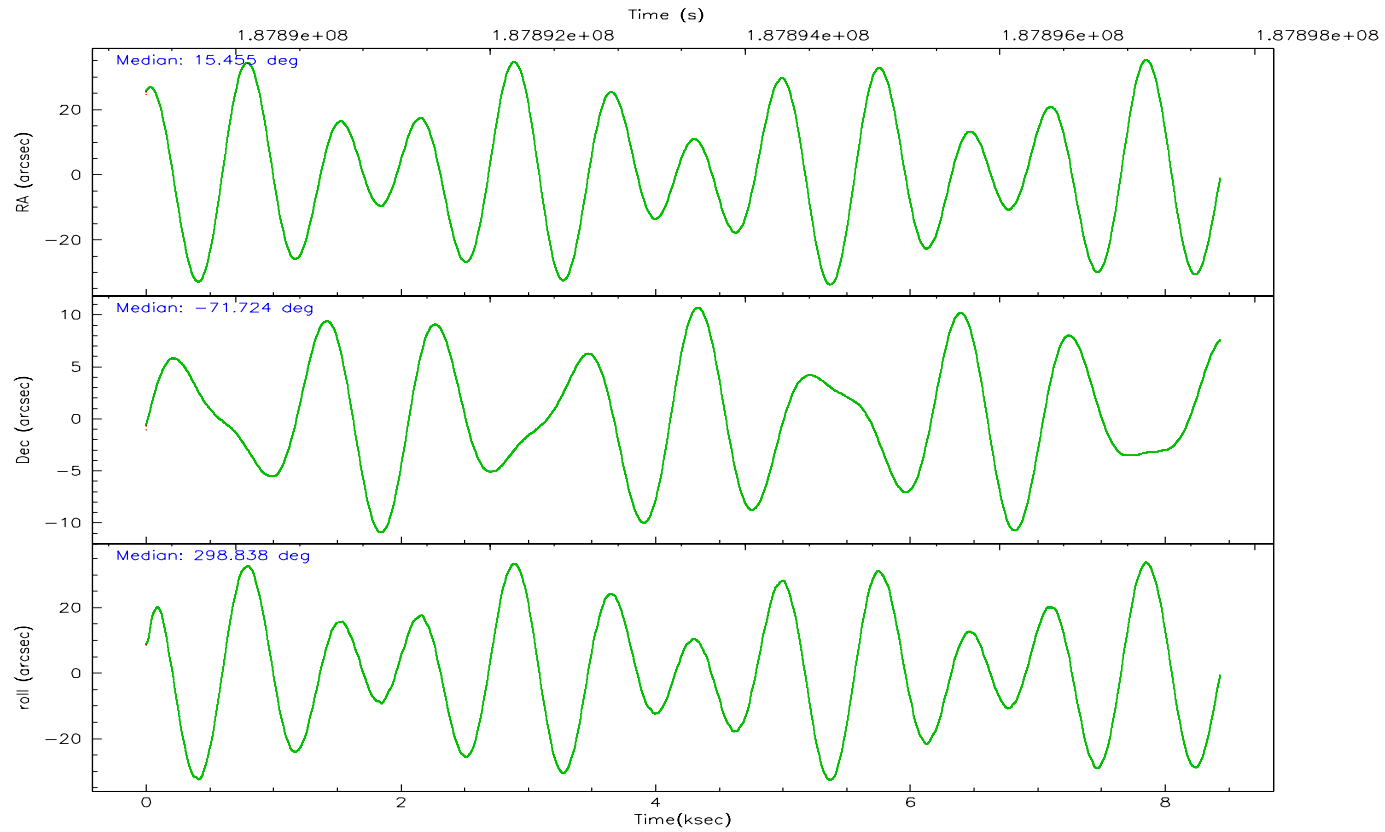
	ccd 4	ccd 5	ccd 6	ccd 7	ccd 8	ccd 9
grade 0 events	19509	4861	1695	1523	3143	8772
	31%	9%	4%	3%	6%	20%
grade 1 events	133	661	13	27	31	65
	0%	1%	0%	0%	0%	0%
grade 2 events	2182	8809	838	4695	2384	793
	3%	16%	2%	11%	4%	1%
grade 3 events	679	886	421	1304	1202	445
	1%	1%	1%	3%	2%	1%
grade 4 events	680	884	420	1149	1154	471
	1%	1%	1%	2%	2%	1%
grade 5 events	1325	2585	1289	2994	1925	1439
	2%	4%	3%	7%	3%	3%
grade 6 events	676	14341	745	10882	2910	764
	1%	26%	1%	27%	5%	1%
grade 7 events	37421	20332	31851	16554	36062	30357
	59%	38%	85%	42%	73%	70%

2.2 Compared Parameters

Parameter	Planned	Actual	Parameter	Planned	Actual
Instrument	ACIS	ACIS	Obspar format version number	6	6
Detector	ACIS-456789	ACIS-456789	Obspar file type	PREDICTED	ACTUAL
Grating	NONE	NONE	Obspar update status	NONE	UPDATED
Data mode	VFAINT	VFAINT	On-chip summing requested	N	N
Observation mode	POINTING	POINTING	Subarray requested	NONE	NONE
Pointing RA	15.380637	15.45538255534606	Alternating exposures requested	N	N
Pointing Dec	-71.709903	-71.72360782501798	Primary exposure time	0.000000	3.2
Pointing Roll	298.614603	298.8421813599308			
Window start time	181353664.184000	181353664.184000			
Window stop time	189216064.184000	189216064.184000			
SIM focus pos (mm)	-0.684267	-0.6828225247311905			
SIM defocus (mm)	0	0.001444936568705701			
SIM translation stage pos (mm)	-190.132523	-190.1400660498719			
SIM translation stage offset (mm)	0	0.00754346686406393			
Observation start time	187889478.184000	187889102.96151			
Observation start date	2003-12-15T15:30:14	2003-12-15T15:25:02			
Observation end time	187897728.184000	187897862.61189			
Observation end date	2003-12-15T17:47:44	2003-12-15T17:51:02			
Read mode	TIMED	TIMED			

2.3 Aspect



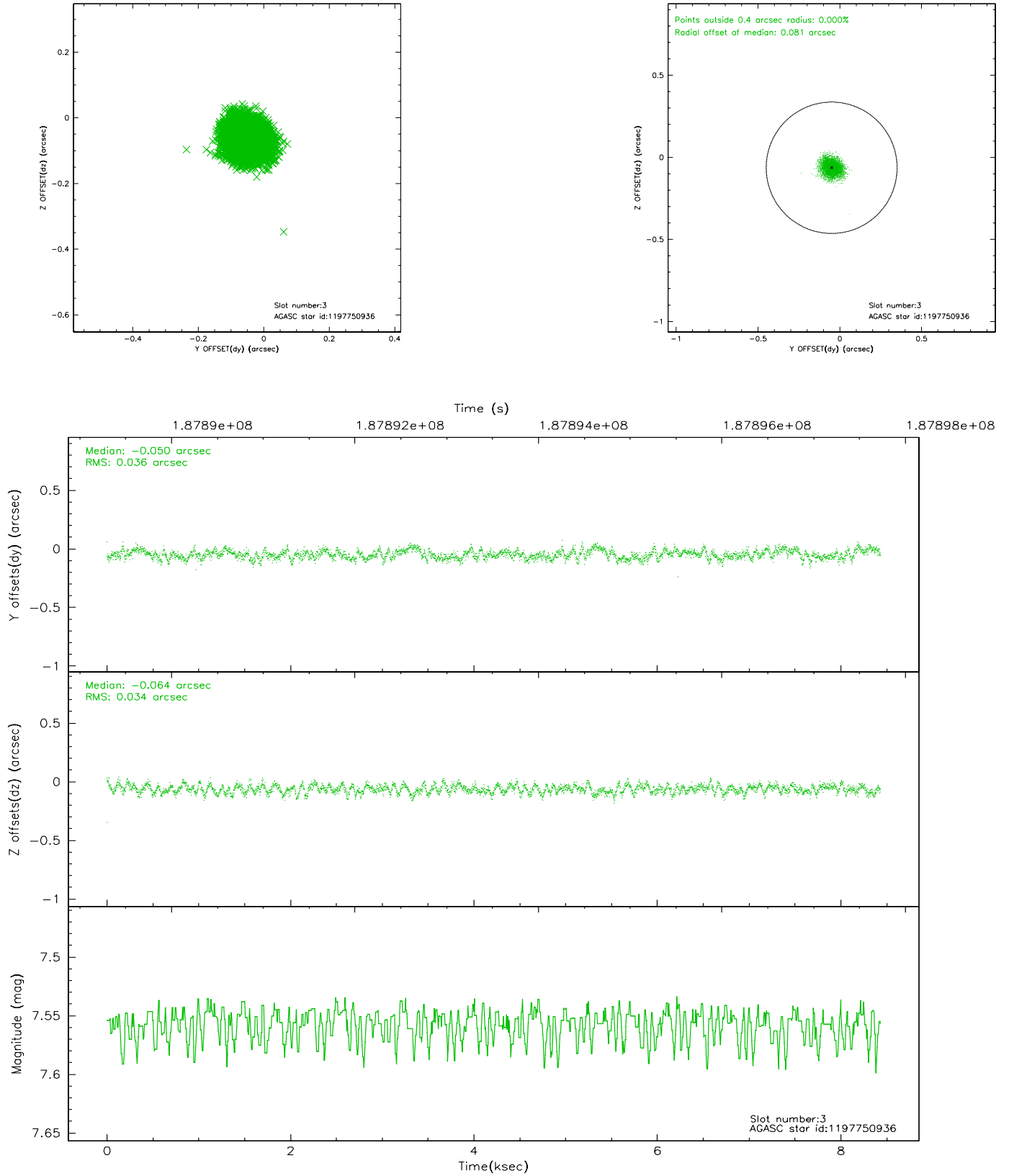


Slot Statistics

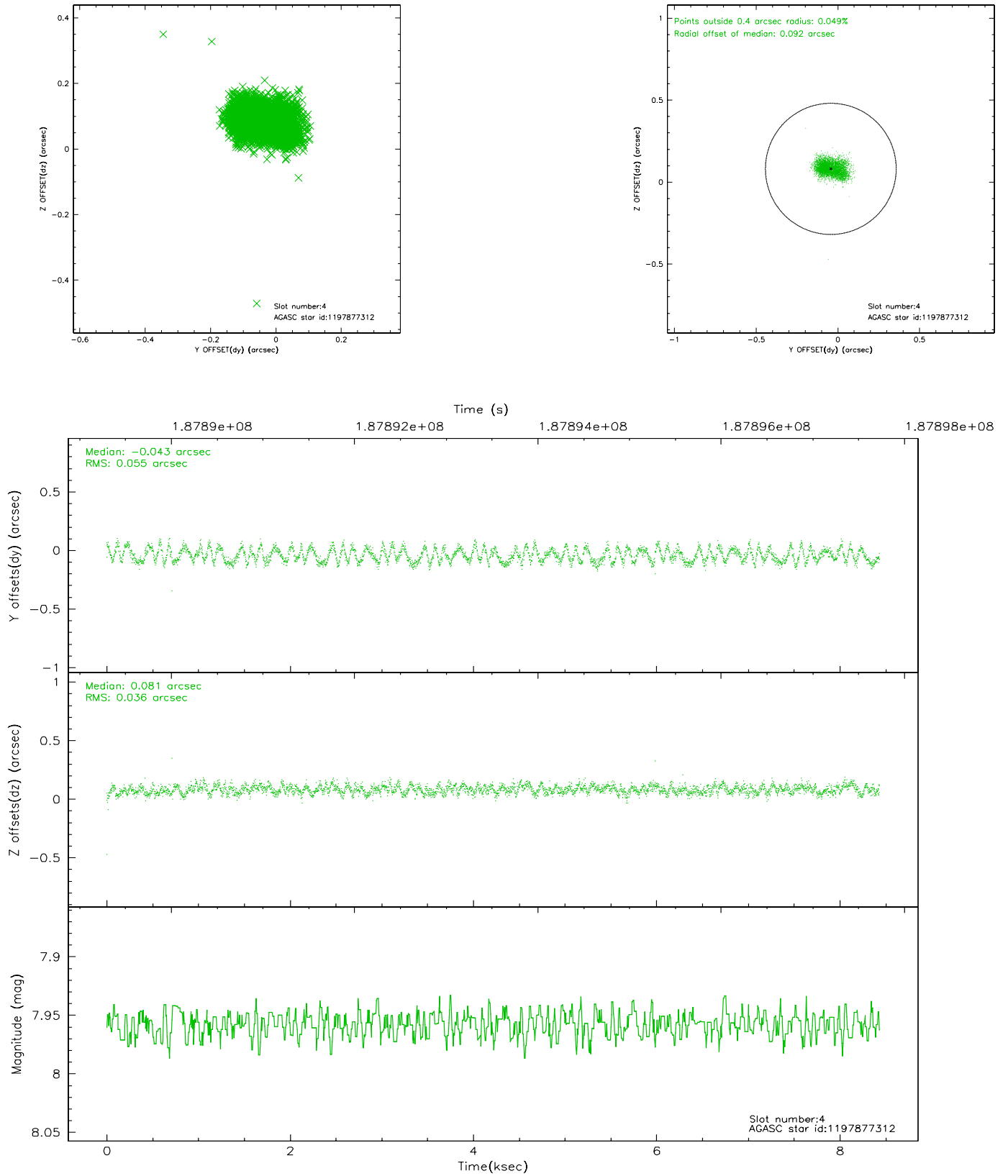
slot	status	id	mag	n_pts	med_dy	med_dz	dr1	dr2	ra	dec	mean_y	mean_z
0	FID	ACIS-S-2	7.10	2058	-0.047	0.008	0.008	0.012	0.000000	0.000000	-759.43	-1731.58
1	FID	ACIS-S-4	7.20	2058	0.032	0.021	0.006	0.011	0.000000	0.000000	2153.60	176.28
2	FID	ACIS-S-5	7.23	2058	-0.016	-0.020	0.007	0.012	0.000000	0.000000	-1811.42	170.59
3	GUIDE	1197750936	7.56	4114	-0.050	-0.064	0.053	0.084	15.387940	-71.549550	-502.31	283.67
4	GUIDE	1197877312	7.96	4115	-0.043	0.081	0.070	0.107	16.362782	-70.933298	-1892.95	2348.51
5	GUIDE	1197884536	8.49	4115	0.030	0.025	0.058	0.092	17.160729	-71.835289	1378.63	1523.98
6	GUIDE	1197884712	8.32	4115	0.025	0.050	0.061	0.100	16.087398	-72.252690	2091.56	-256.58
7	GUIDE	1197885328	7.23	4114	0.036	-0.090	0.059	0.089	16.283090	-71.733943	571.20	849.16

2.4 Star Slots

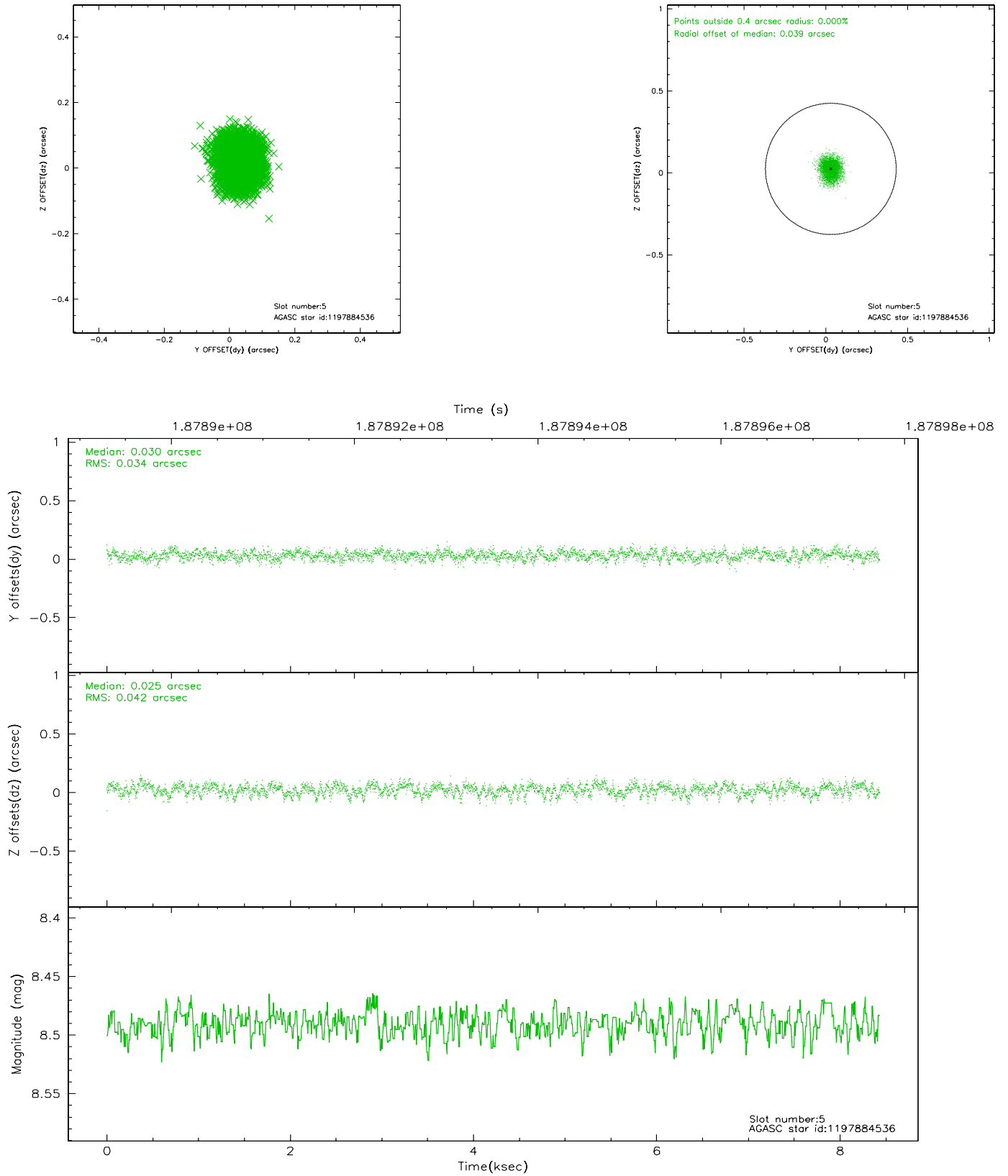
2.4.1 Slot 3



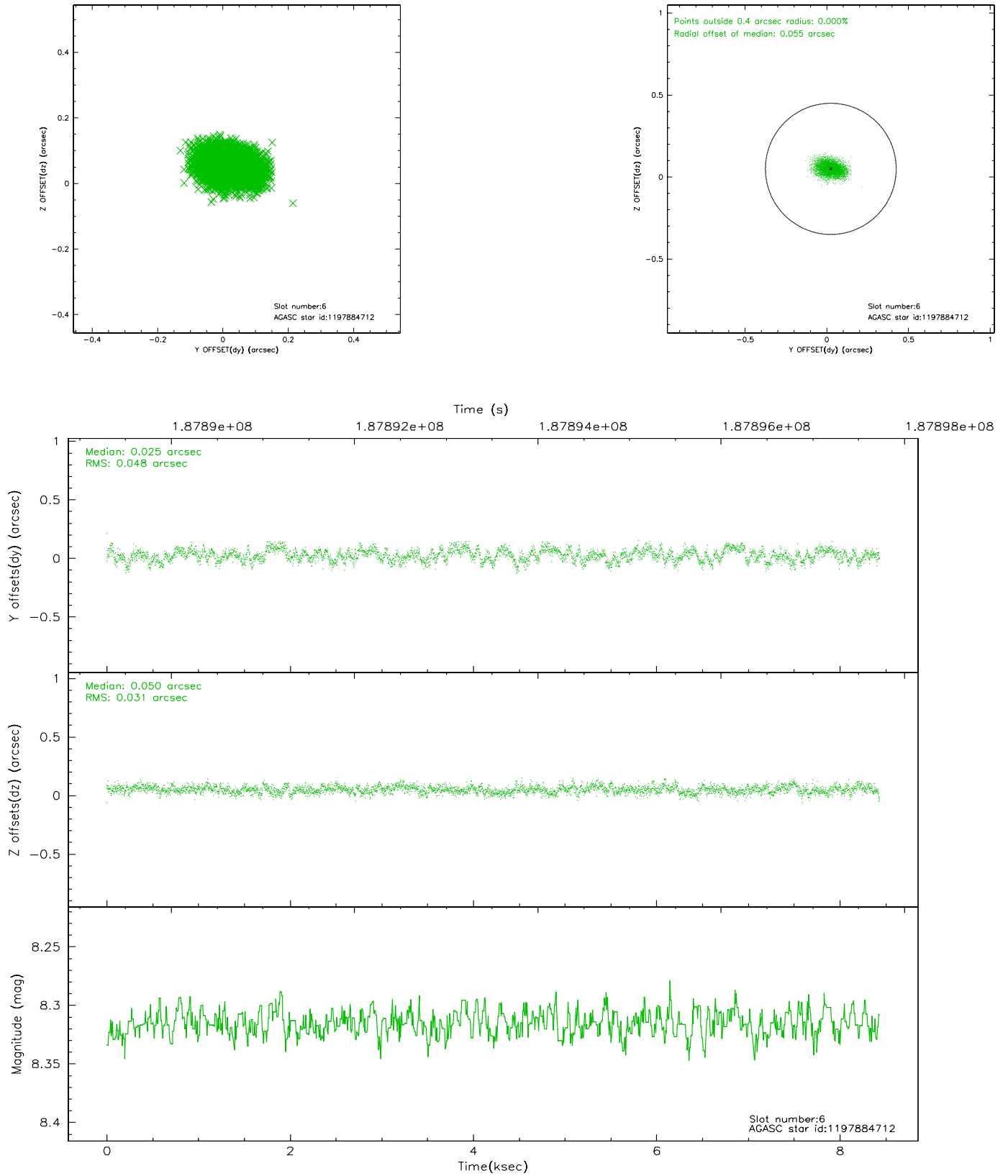
2.4.2 Slot 4



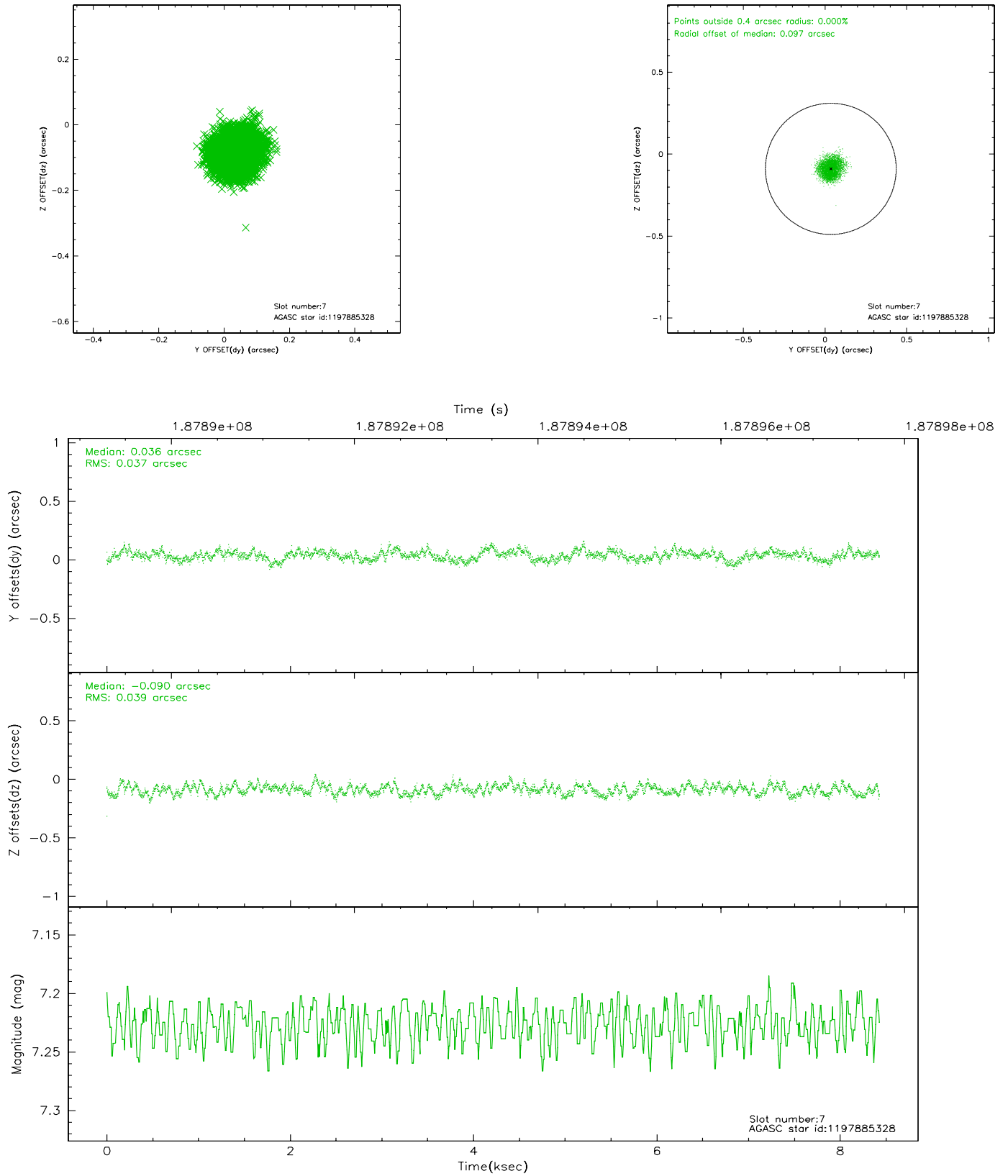
2.4.3 Slot 5



2.4.4 Slot 6

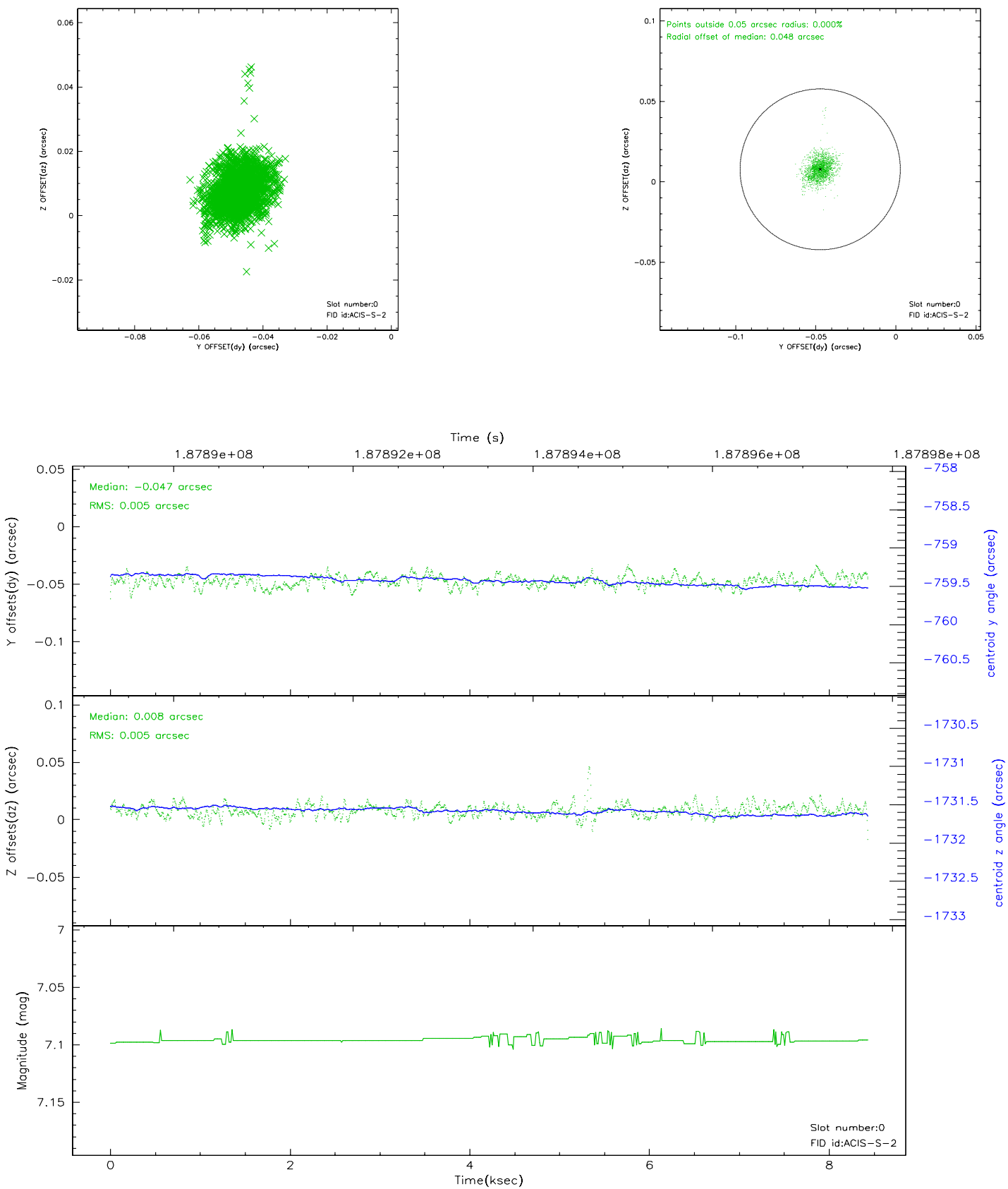


2.4.5 Slot 7

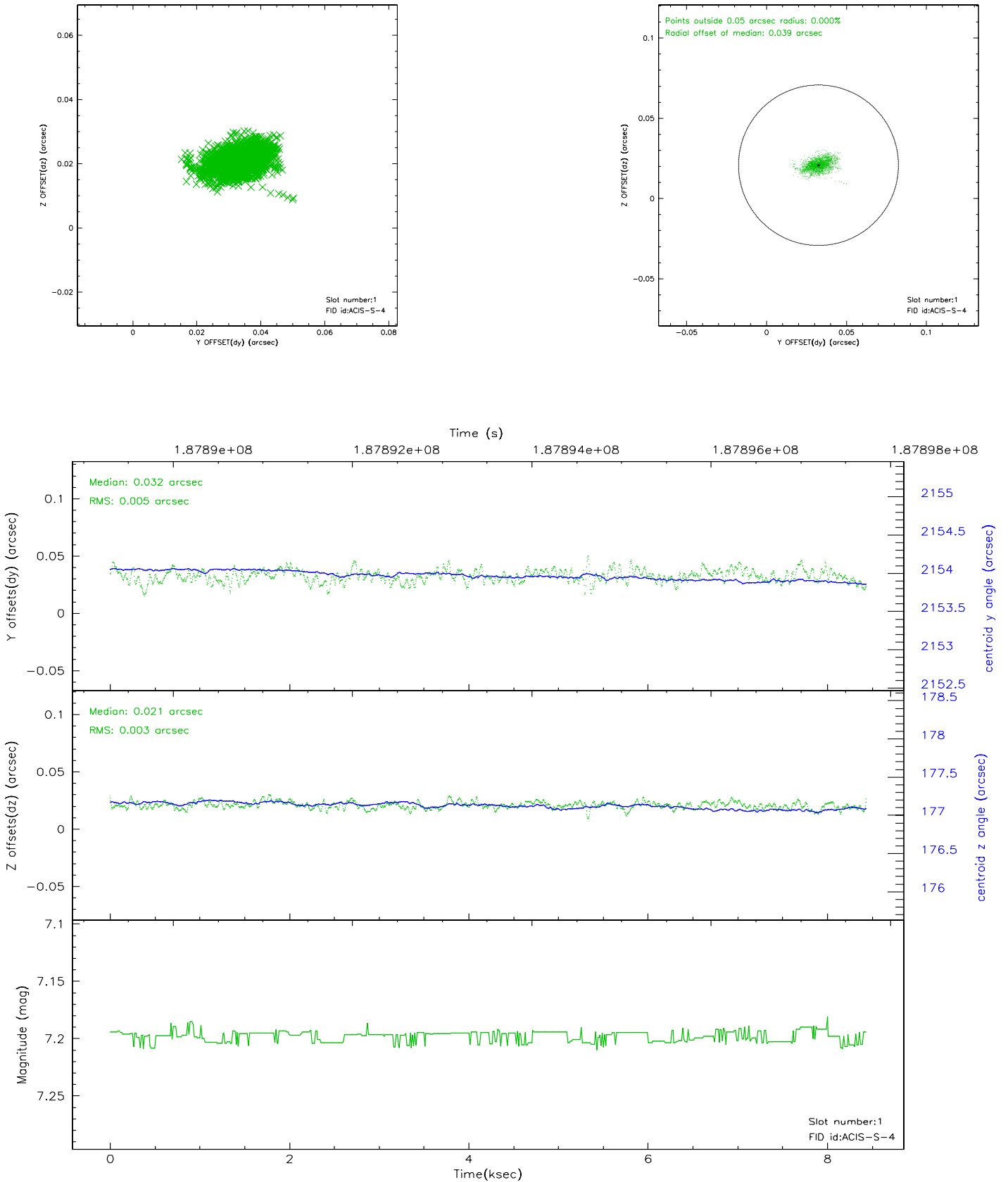


2.5 FID Slots

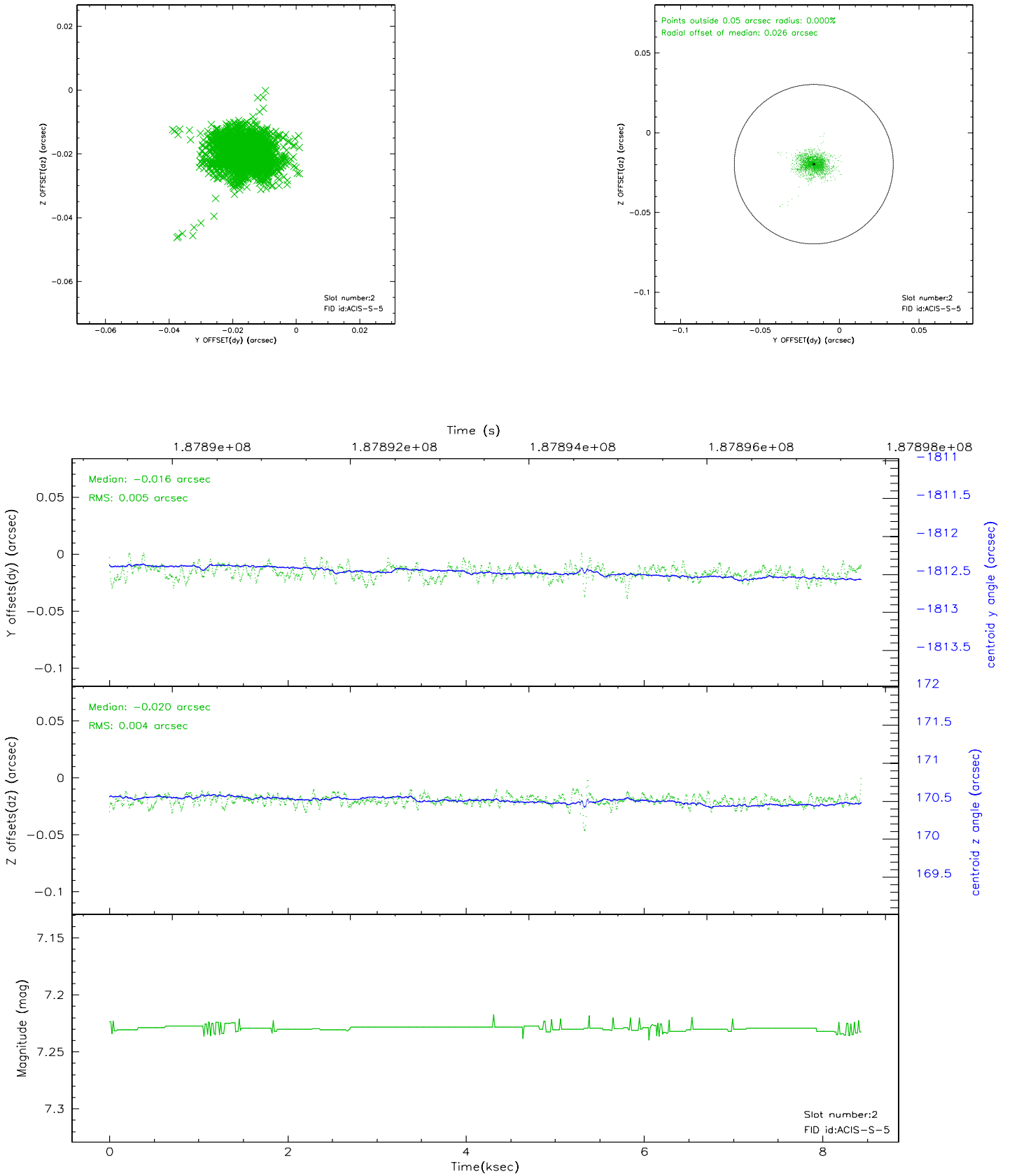
2.5.1 Slot 0



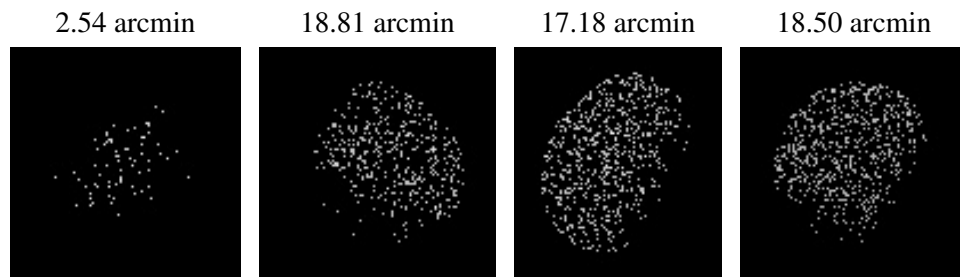
2.5.2 Slot 1



2.5.3 Slot 2



3 Point Sources



A Summary

A.1 Status

V&V Scientist	Jen Lauer
V&V Date (YYYY-MM-DD)	2006.06.23
V&V Edition	1
V&V Disposition and Status	OK
V&V Charge Time	8.012

A.2 Comments

Window constraint met. The source is off-axis and therefore extended and asymmetric.