

V&V Reference Report

L2 ASCDS Version : 7.6.8

Observation 5124 - L2 Version 001
Chandra X-Ray Center

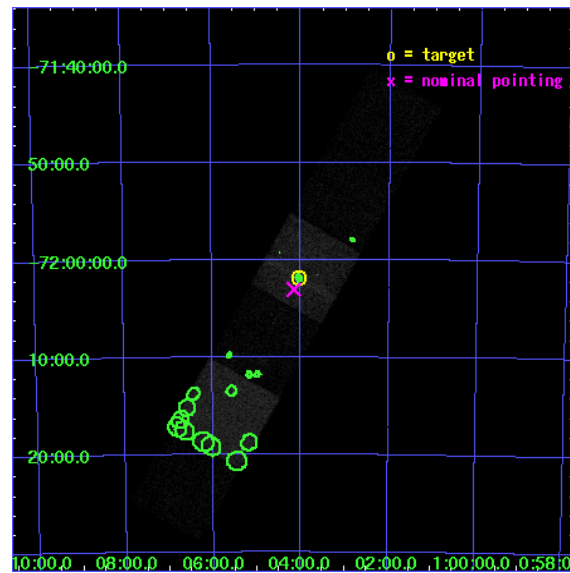
L2 Processing Date : Jun 23 2006

Contents

1	Front	2
2	OBI	3
2.1	OBI	3
2.1.1	Images	3
2.1.2	Bias	3
2.1.3	Parameters	4
2.1.4	Events	4
2.2	Compared Parameters	5
2.3	Aspect	6
2.4	Star Slots	9
2.4.1	Slot 3	9
2.4.2	Slot 4	10
2.4.3	Slot 5	11
2.4.4	Slot 6	12
2.4.5	Slot 7	13
2.5	FID Slots	14
2.5.1	Slot 0	14
2.5.2	Slot 1	15
2.5.3	Slot 2	16
3	Point Sources	17
A	Summary	18
A.1	Status	18
A.2	Comments	18

1 Front

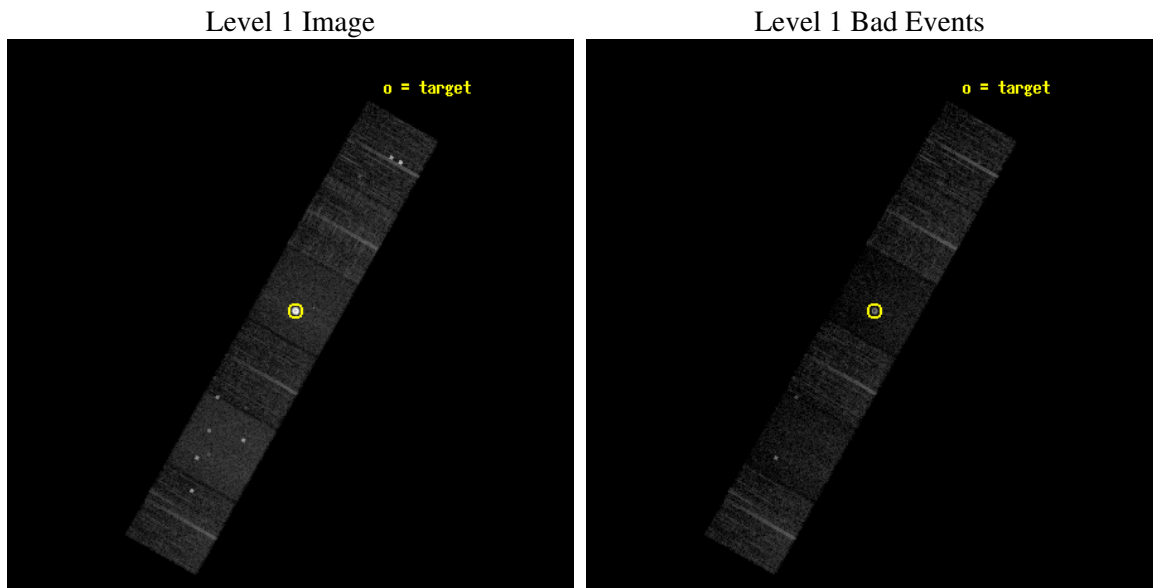
seq_num	590322
obs_id	5124
title	AO5A ACIS-S Calibration Observations of E0102-72
observer	Dr. CXC Calibration
object	E0102-72[S3,-120,-1,0,0]
dtcycle	0
cycle	P
ra_targ	16.01
dec_targ	-72.032028
ra_nom	16.038174217547
dec_nom	-72.050917019385
roll_nom	299.48970394551
revision	2
ontime	8003.1999701858
livetime	7901.8586332148
ontime4	8003.1999701858
ontime5	8003.1999701858
ontime6	7999.9590198398
ontime7	8003.1999701858
ontime8	7996.7180296183
ontime9	8003.1999701858
l2events	119769



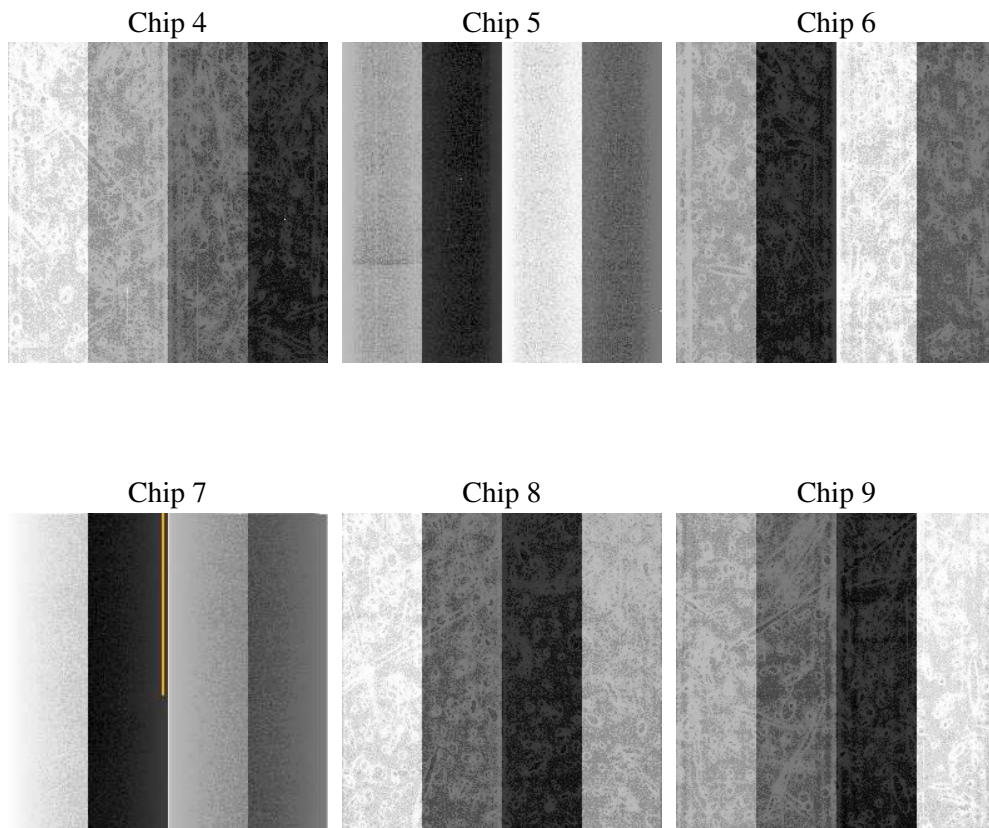
2 OBI

2.1 OBI

2.1.1 Images



2.1.2 Bias



2.1.3 Parameters

obi_num	0
ascdsver	7.6.8
caldbver	3.2.2
date	2006-06-23T16:52:38
revision	2

sched_exp_time	8250.000000
ontime	8008.51382792
ontime4	8008.513808012
ontime5	8008.51382792
ontime6	8005.272877574
ontime7	8008.51382792
ontime8	8002.0318674445
ontime9	8008.51382792
l1events	325813

2.1.4 Events

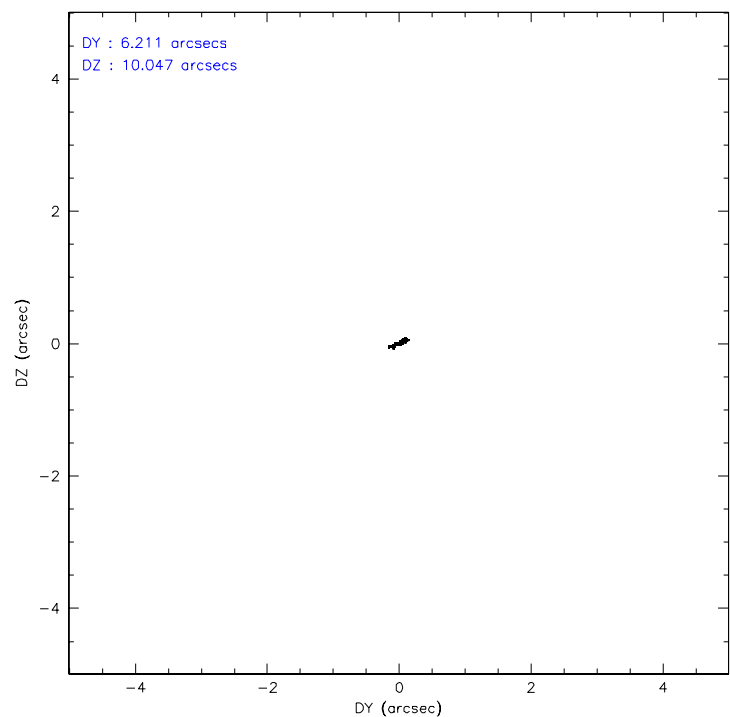
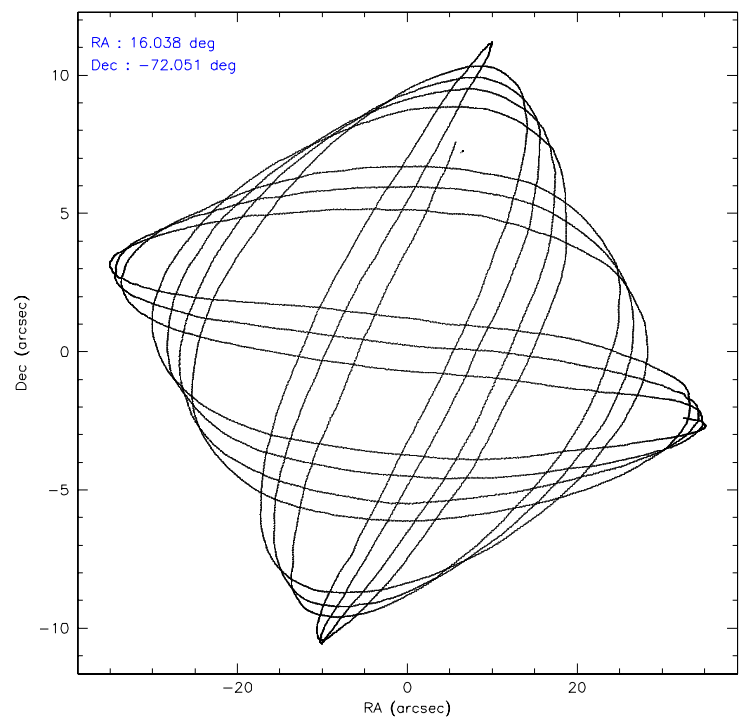
	ccd 4	ccd 5	ccd 6	ccd 7	ccd 8	ccd 9
level 1 events	43435	54612	37157	98955	48119	43535
rejected events	37355	23766	31845	21341	37055	31842
rejected %	86%	43%	85%	21%	77%	73%

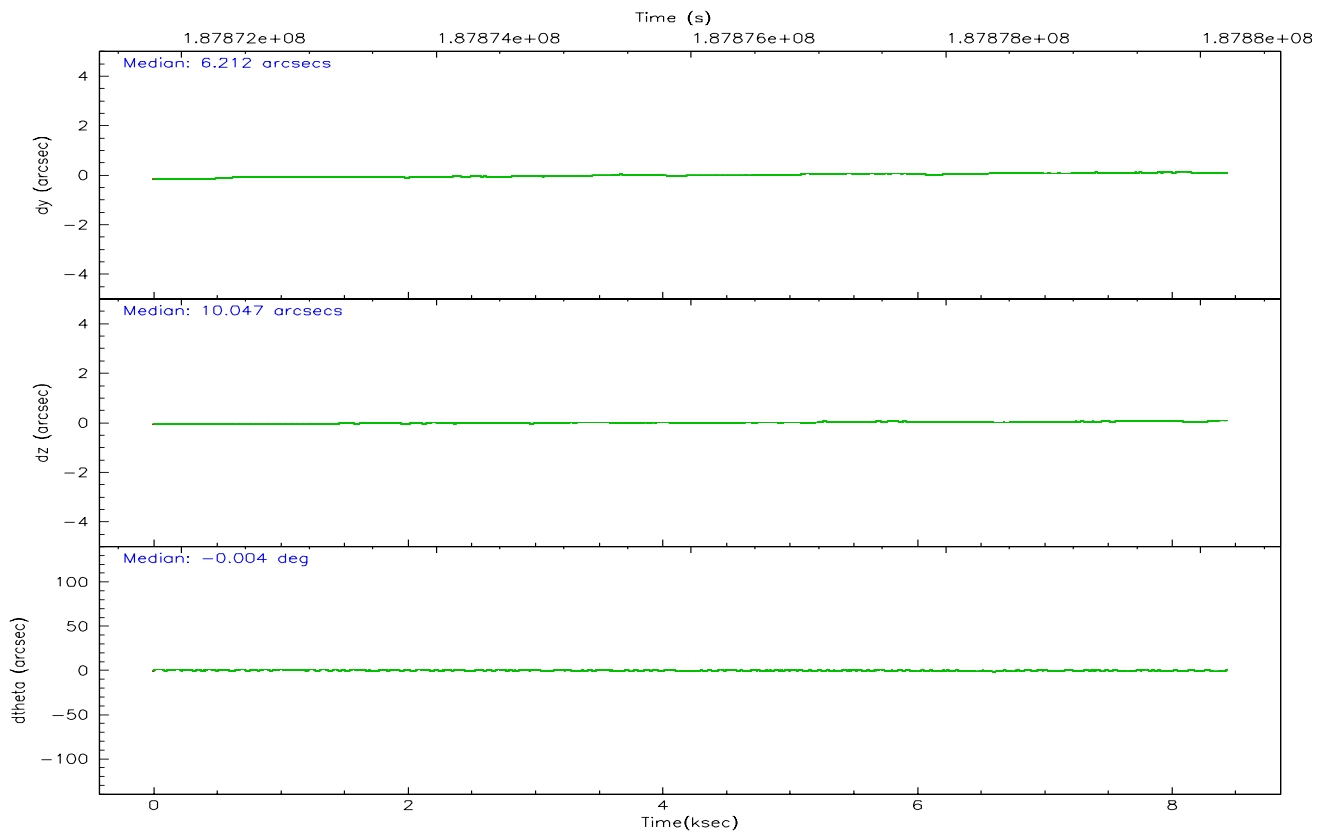
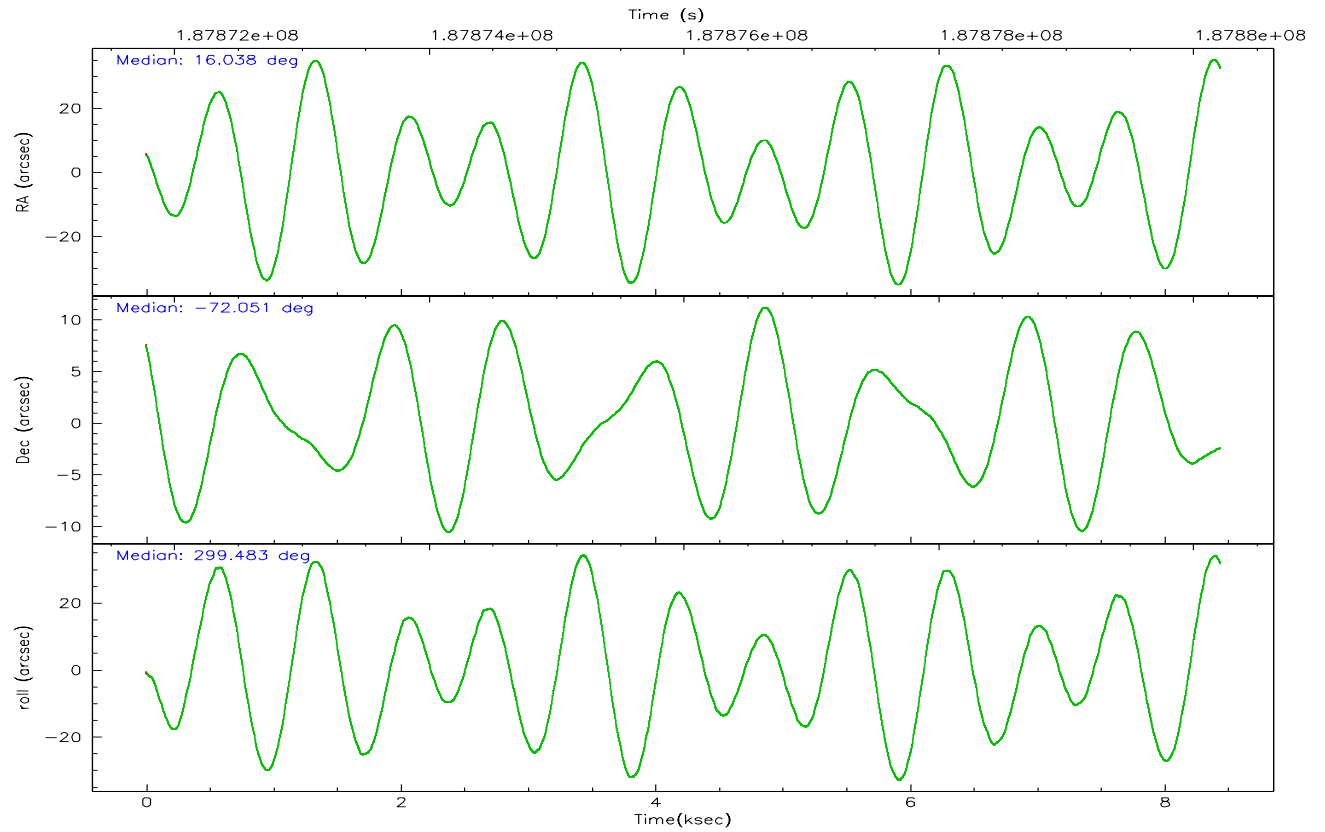
	ccd 4	ccd 5	ccd 6	ccd 7	ccd 8	ccd 9
grade 0 events	3643	5010	2746	21616	3607	9132
	8%	9%	7%	21%	7%	20%
grade 1 events	48	682	24	358	25	47
	0%	1%	0%	0%	0%	0%
grade 2 events	965	9102	892	20686	2371	844
	2%	16%	2%	20%	4%	1%
grade 3 events	461	911	454	8178	1186	481
	1%	1%	1%	8%	2%	1%
grade 4 events	411	909	493	7889	1092	458
	0%	1%	1%	7%	2%	1%
grade 5 events	1287	2690	1347	3851	1896	1398
	2%	4%	3%	3%	3%	3%
grade 6 events	608	14939	733	19309	2810	789
	1%	27%	1%	19%	5%	1%
grade 7 events	36012	20369	30468	17068	35132	30386
	82%	37%	81%	17%	73%	69%

2.2 Compared Parameters

Parameter	Planned	Actual	Parameter	Planned	Actual
Instrument	ACIS	ACIS	Obspar format version number	6	6
Detector	ACIS-456789	ACIS-456789	Obspar file type	PREDICTED	ACTUAL
Grating	NONE	NONE	Obspar update status	NONE	UPDATED
Data mode	VFAINT	VFAINT	On-chip summing requested	N	N
Observation mode	POINTING	POINTING	Subarray requested	NONE	NONE
Pointing RA	15.961463	16.0381742175467	Alternating exposures requested	N	N
Pointing Dec	-72.037352	-72.05091701938549	Primary exposure time	0.000000	3.2
Pointing Roll	299.260103	299.4897039455111			
Window start time	181353664.184000	181353664.184000			
Window stop time	189216064.184000	189216064.184000			
SIM focus pos (mm)	-0.684267	-0.6828225247311905			
SIM defocus (mm)	0	0.001444936568705701			
SIM translation stage pos (mm)	-190.132523	-190.1400660498719			
SIM translation stage offset (mm)	0	0.00754346686406393			
Observation start time	187871958.184000	187871582.63575			
Observation start date	2003-12-15T10:38:14	2003-12-15T10:33:02			
Observation end time	187880208.184000	187880342.28613			
Observation end date	2003-12-15T12:55:44	2003-12-15T12:59:02			
Read mode	TIMED	TIMED			

2.3 Aspect



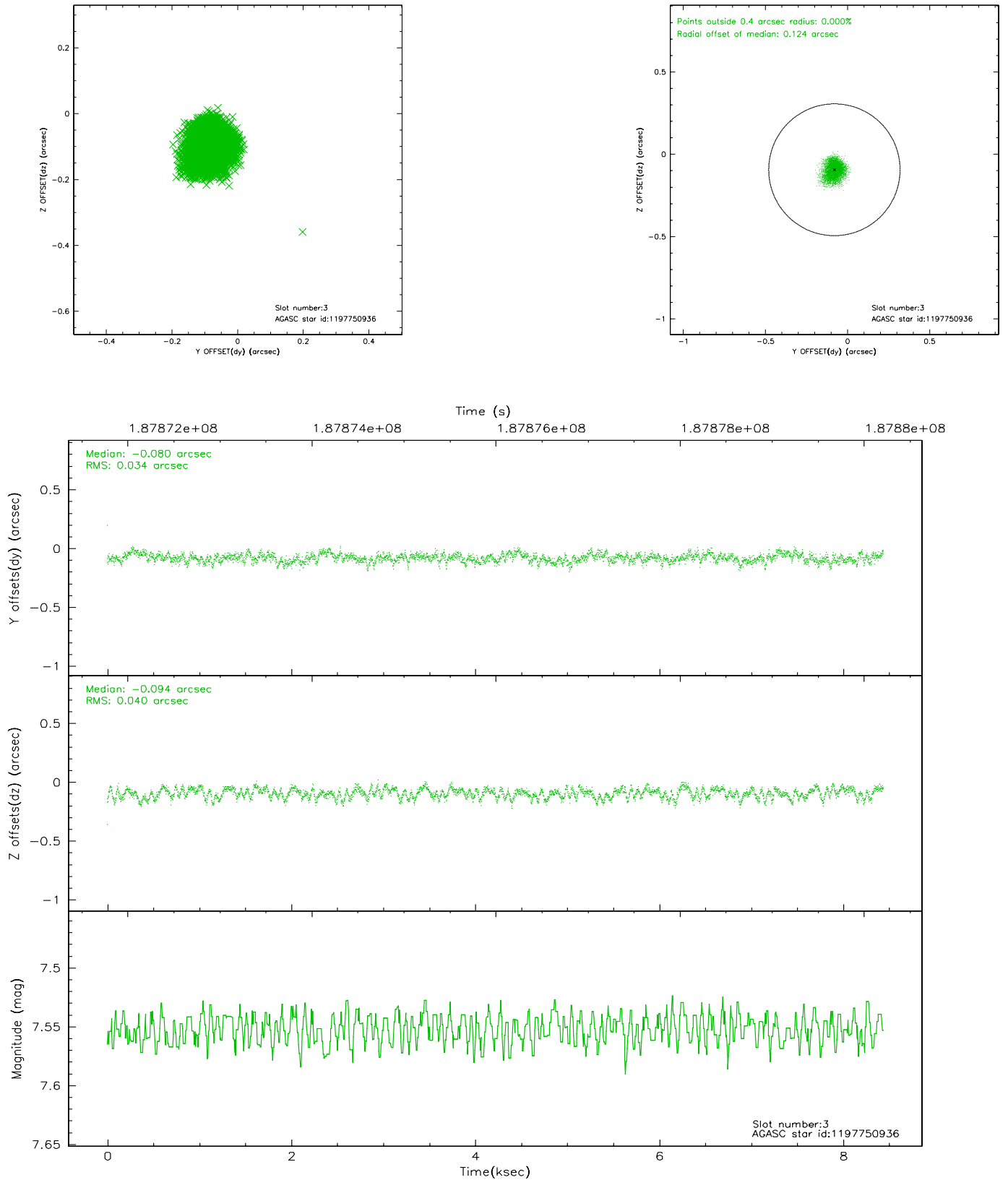


Slot Statistics

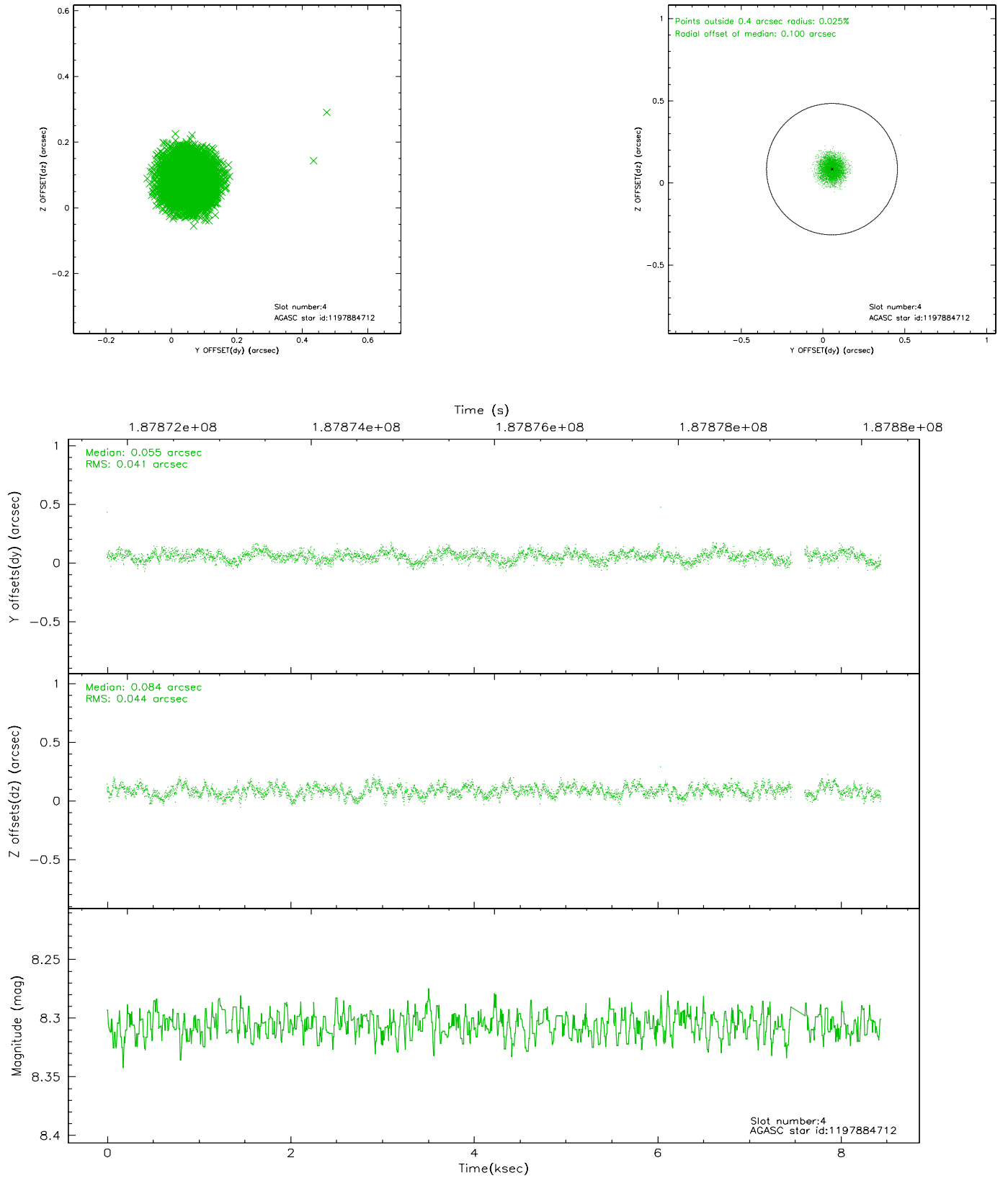
slot	status	id	mag	n_pts	med_dy	med_dz	dr1	dr2	ra	dec	mean_y	mean_z
0	FID	ACIS-S-2	7.10	2059	-0.039	-0.018	0.005	0.009	0.000000	0.000000	-758.97	-1731.32
1	FID	ACIS-S-4	7.20	2059	0.019	0.026	0.006	0.010	0.000000	0.000000	2154.06	176.54
2	FID	ACIS-S-6	7.35	2059	-0.008	-0.002	0.007	0.011	0.000000	0.000000	403.88	814.65
3	GUIDE	1197750936	7.55	4117	-0.080	-0.094	0.056	0.088	15.387940	-71.549550	-1848.57	286.55
4	GUIDE	1197884712	8.31	4042	0.055	0.084	0.064	0.101	16.087398	-72.252690	743.75	-258.03
5	GUIDE	1197885104	9.35	4115	0.149	-0.001	0.086	0.140	17.845067	-72.189368	1519.75	1525.82
6	GUIDE	1197885328	7.24	4117	-0.035	-0.026	0.048	0.075	16.283090	-71.733943	-774.34	850.85
7	GUIDE	1198189696	7.38	4115	-0.085	0.042	0.051	0.084	15.223750	-72.697522	1691.65	-1852.53

2.4 Star Slots

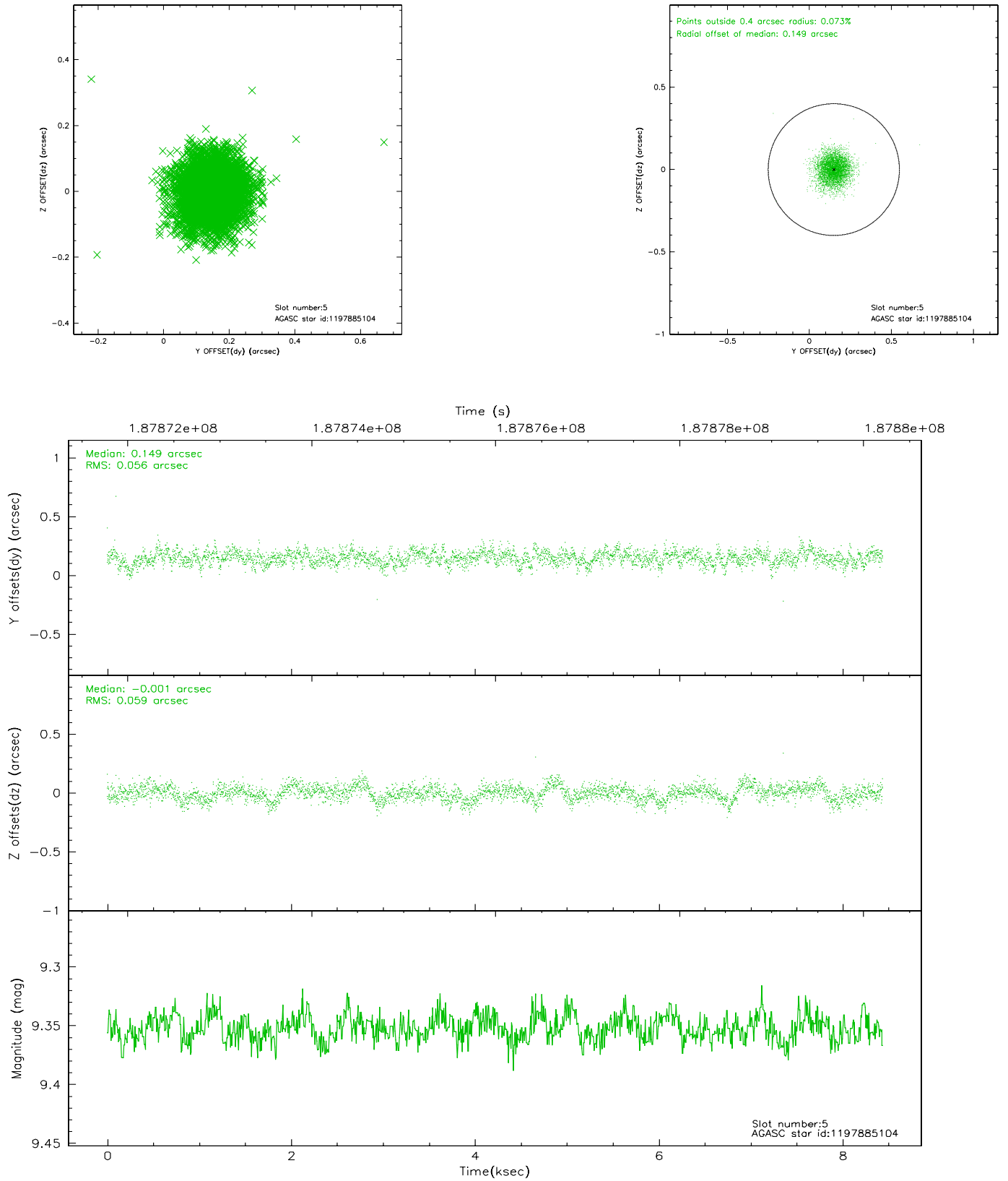
2.4.1 Slot 3



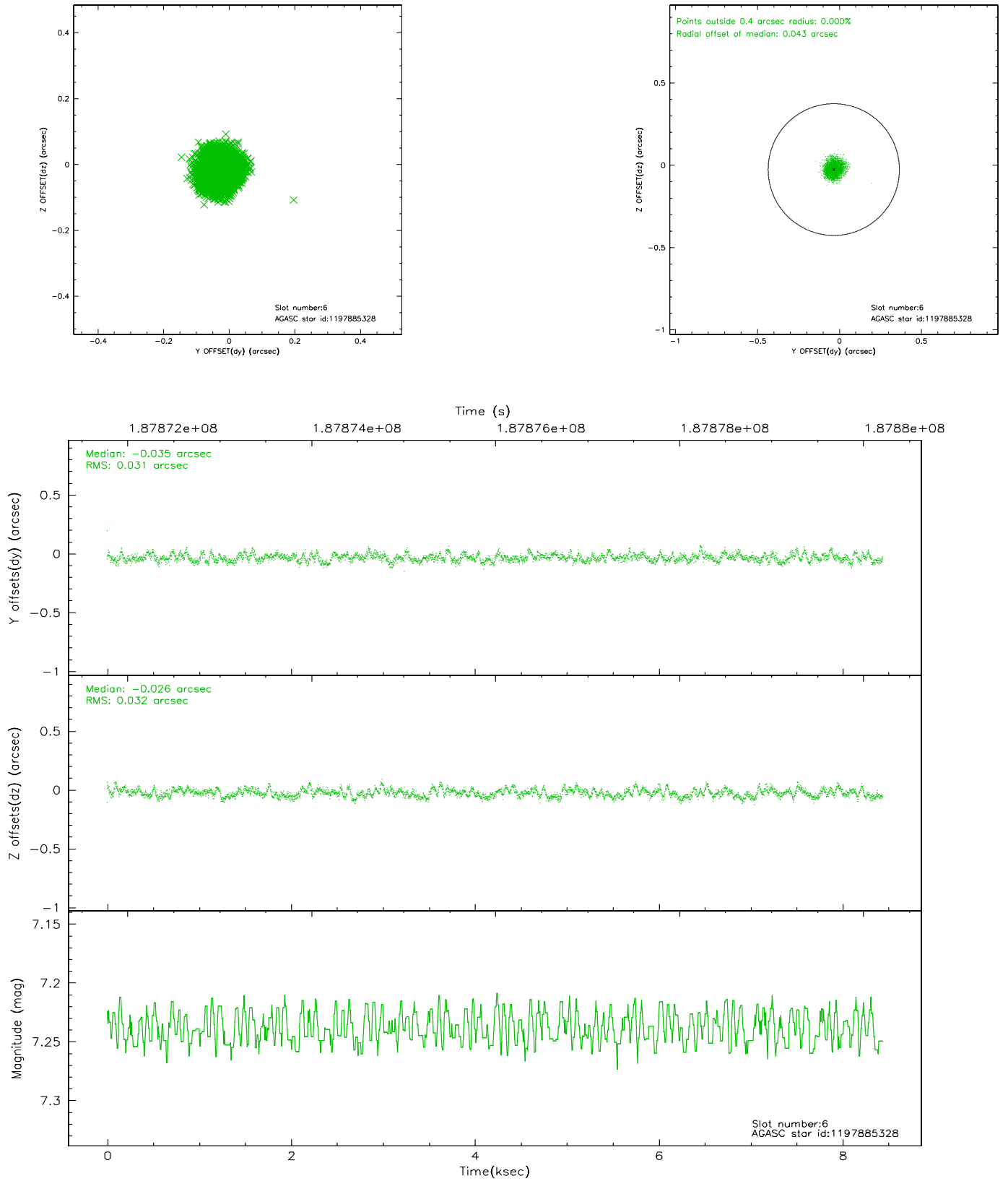
2.4.2 Slot 4



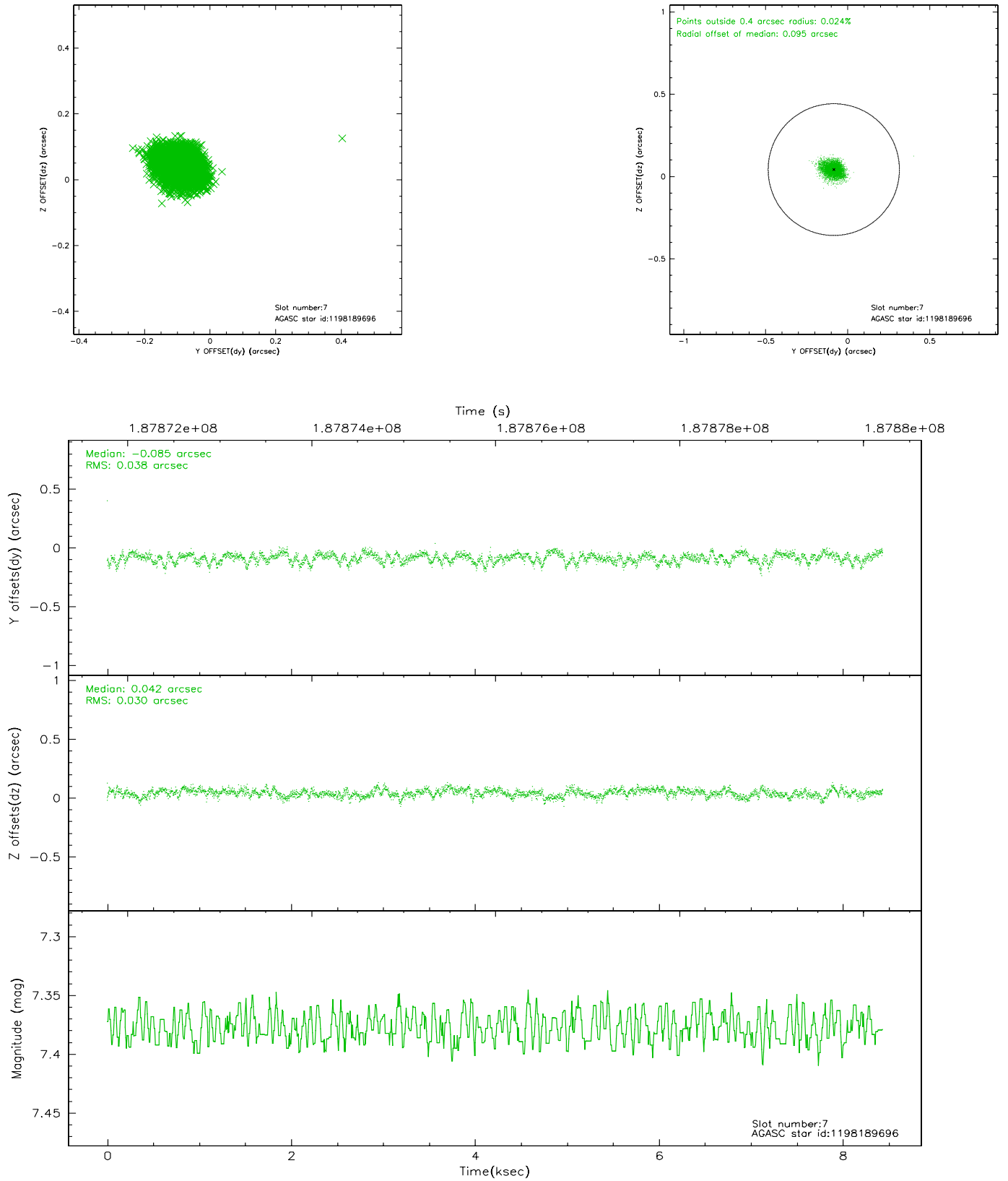
2.4.3 Slot 5



2.4.4 Slot 6

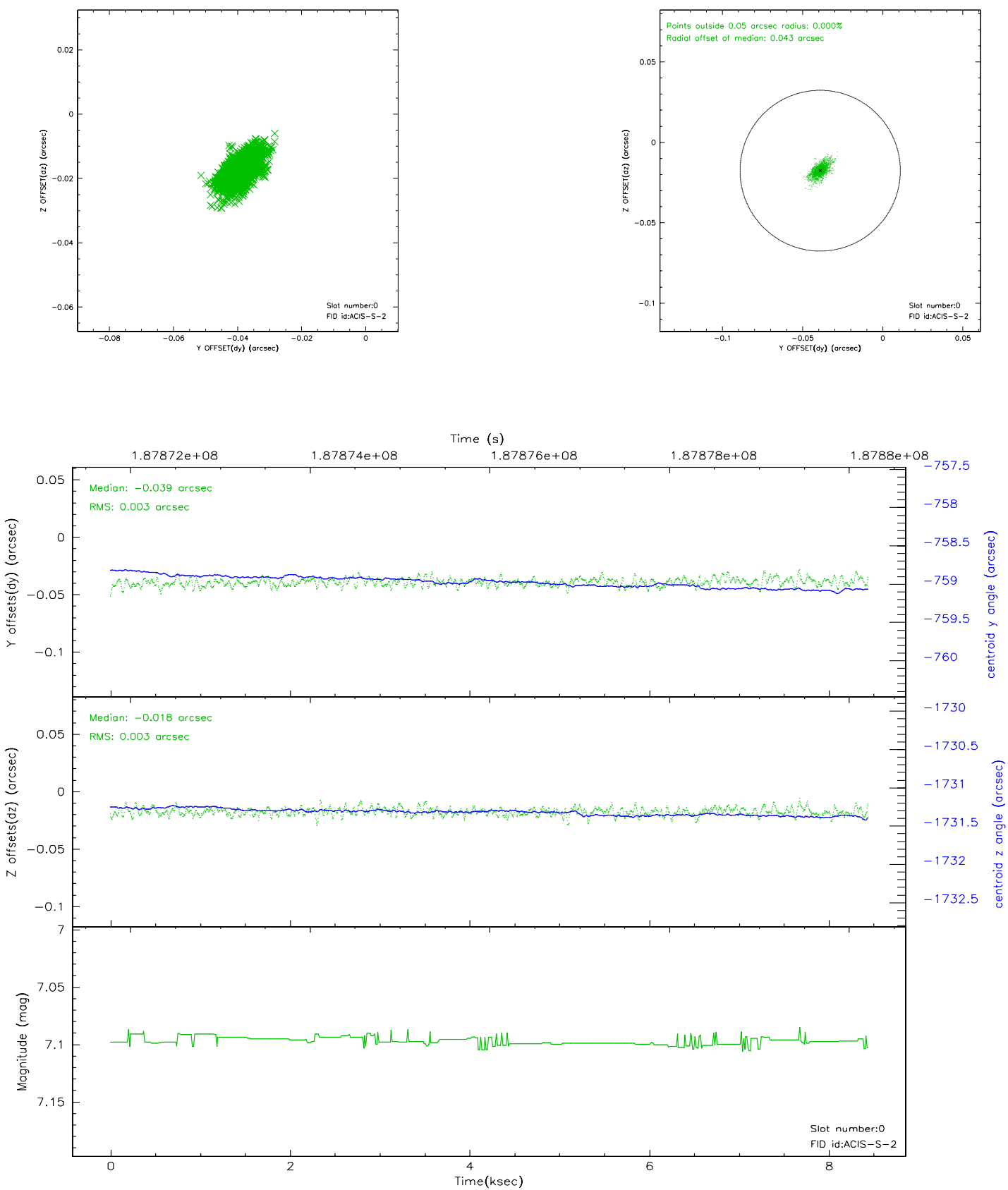


2.4.5 Slot 7

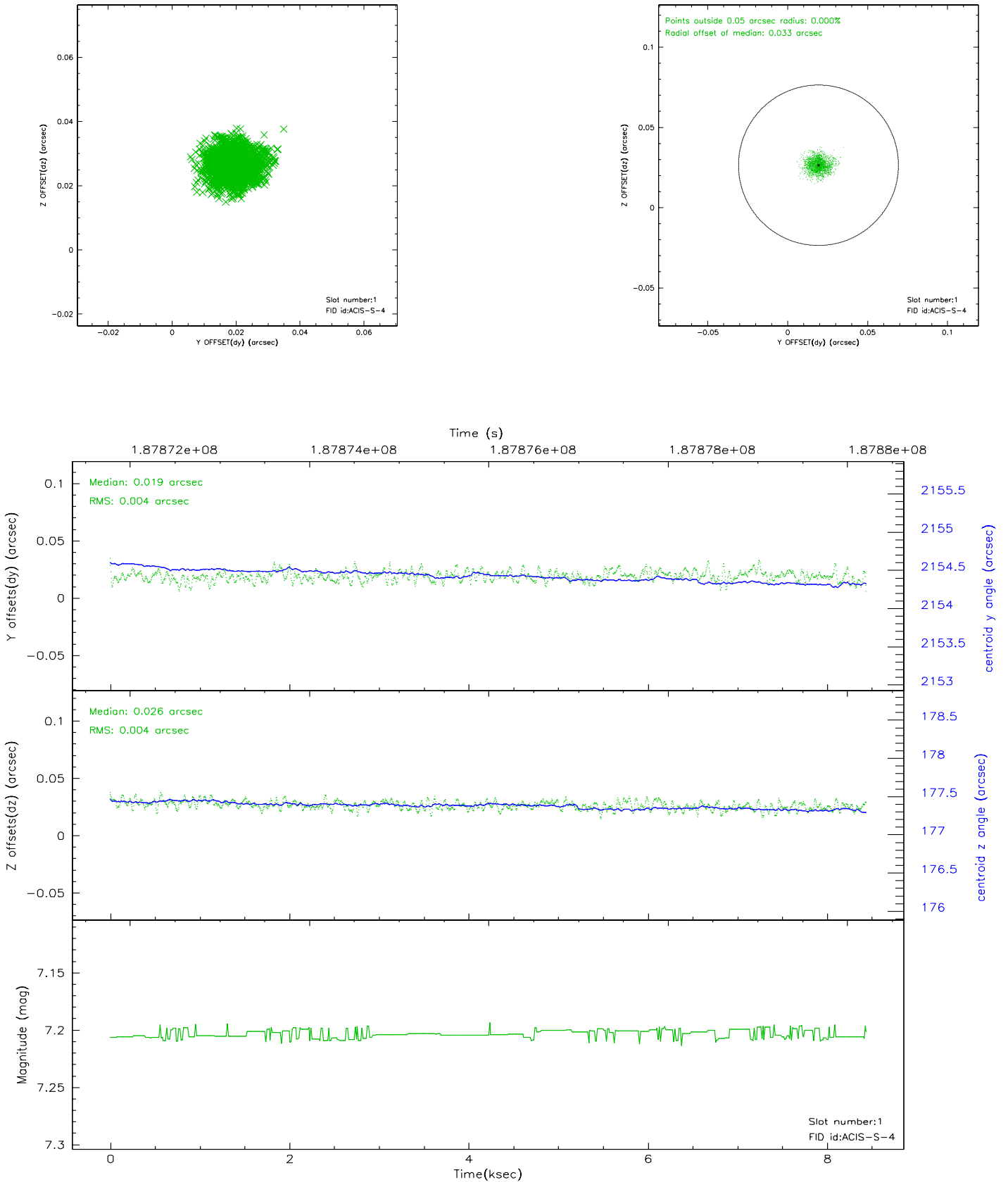


2.5 FID Slots

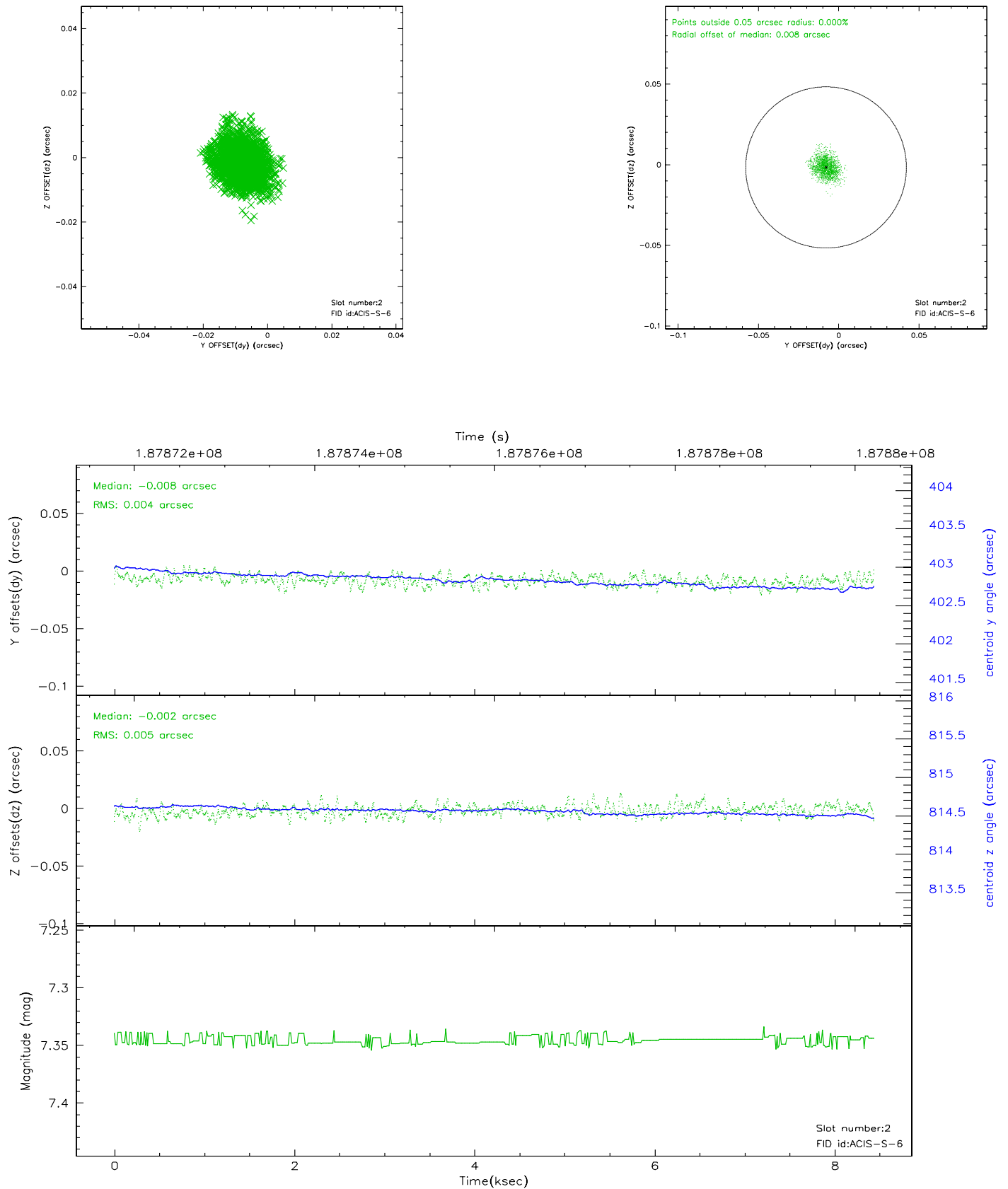
2.5.1 Slot 0



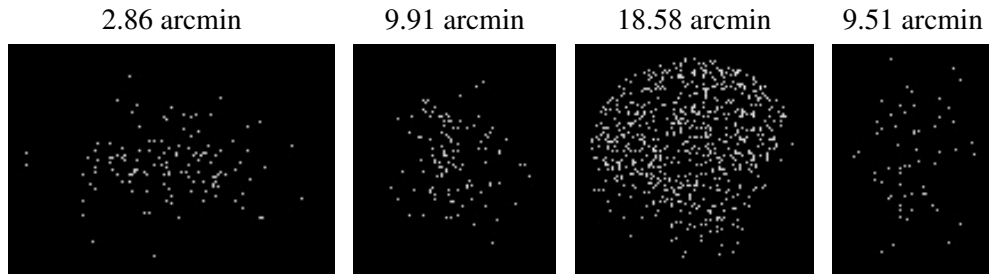
2.5.2 Slot 1



2.5.3 Slot 2



3 Point Sources



A Summary

A.1 Status

V&V Scientist	Jen Lauer
V&V Date (YYYY-MM-DD)	2006.06.23
V&V Edition	1
V&V Disposition and Status	OK
V&V Charge Time	8.006

A.2 Comments

Window constraint met.