

# V&V Reference Report

## L2 ASCDS Version : 7.6.7.2

Observation 5095 - L2 Version 001  
Chandra X-Ray Center

L2 Processing Date : Jun 4 2006

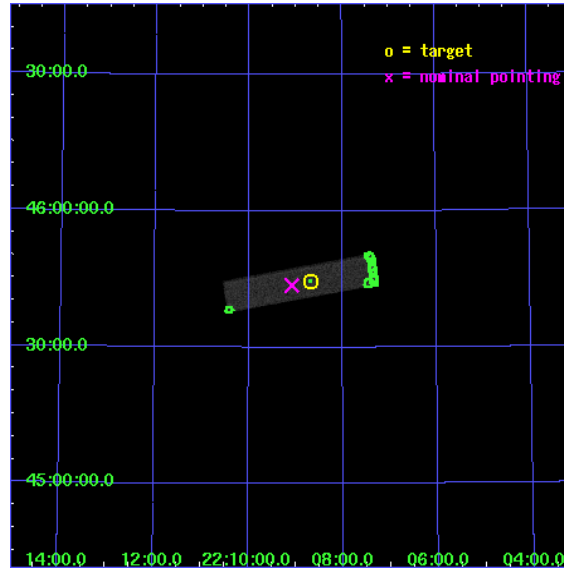
## Contents

<b>1</b>	<b>Front</b>	<b>2</b>
<b>2</b>	<b>OBI</b>	<b>3</b>
2.1	OBI . . . . .	3
2.1.1	Images . . . . .	3
2.1.2	Parameters . . . . .	4
2.1.3	Events . . . . .	4
2.2	Compared Parameters . . . . .	5
2.3	Aspect . . . . .	6
2.4	Star Slots . . . . .	9
2.4.1	Slot 3 . . . . .	9
2.4.2	Slot 4 . . . . .	10
2.4.3	Slot 5 . . . . .	11
2.4.4	Slot 6 . . . . .	12
2.4.5	Slot 7 . . . . .	13
2.5	FID Slots . . . . .	14
2.5.1	Slot 0 . . . . .	14
2.5.2	Slot 1 . . . . .	15
2.5.3	Slot 2 . . . . .	16
<b>3</b>	<b>Point Sources</b>	<b>17</b>
<b>A</b>	<b>Summary</b>	<b>18</b>
A.1	Status . . . . .	18
A.2	Comments . . . . .	18



# 1 Front

seq_num	290368
obs_id	5095
title	AO5A Calibration Observations to Monitor the Spatial Variations in the HRC-S Gain
observer	Dr. CXC Calibration
object	ArLac
ra_targ	332.17
dec_targ	45.742306
ra_nom	332.27000688617
dec_nom	45.728074300285
roll_nom	349.54844214852
revision	2
ontime	1087.7812975347
livetime	1081.8896824459
l2events	37088

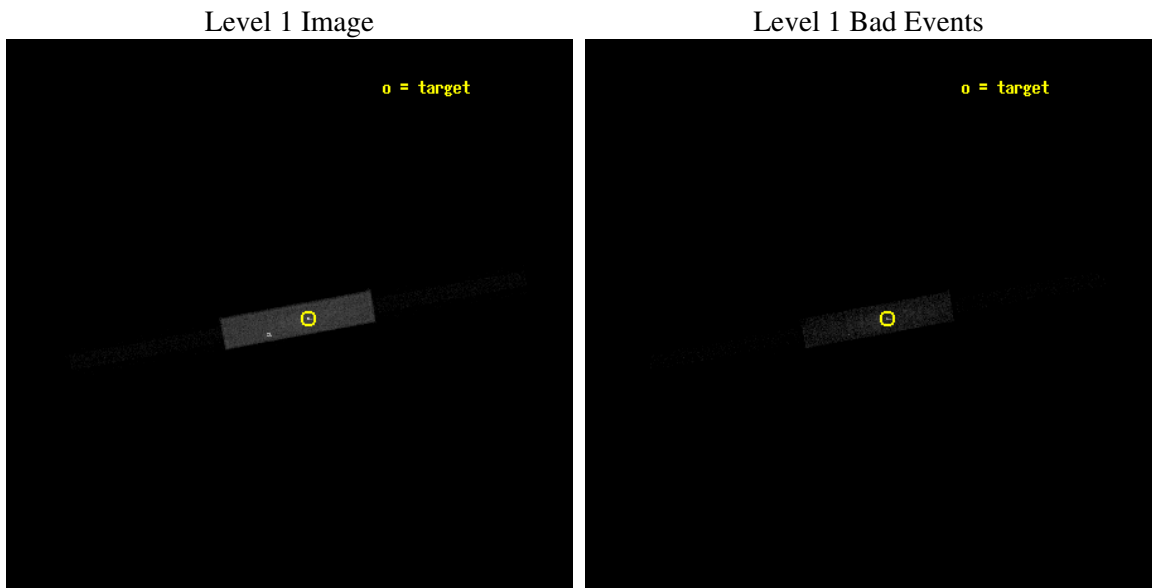




## 2 OBI

### 2.1 OBI

#### 2.1.1 Images





### 2.1.2 Parameters

obi_num	0
ascdsver	7.6.7.2
caldbver	3.2.2
date	2006-06-04T19:28:24
revision	2

sched_exp_time	946.000000
ontime	1135.9562996328
l1events	69701

### 2.1.3 Events

Level 1 Events

	<b>segment 1</b>	<b>segment 2</b>	<b>segment 3</b>
level 1 events	1099	67497	1105
rejected events	1099	24183	1105
rejected %	100%	35%	100%

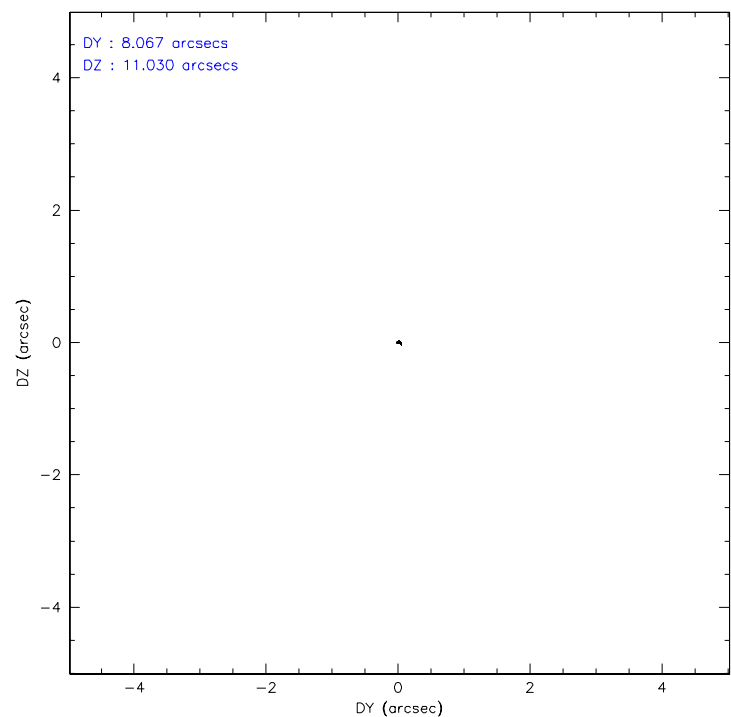
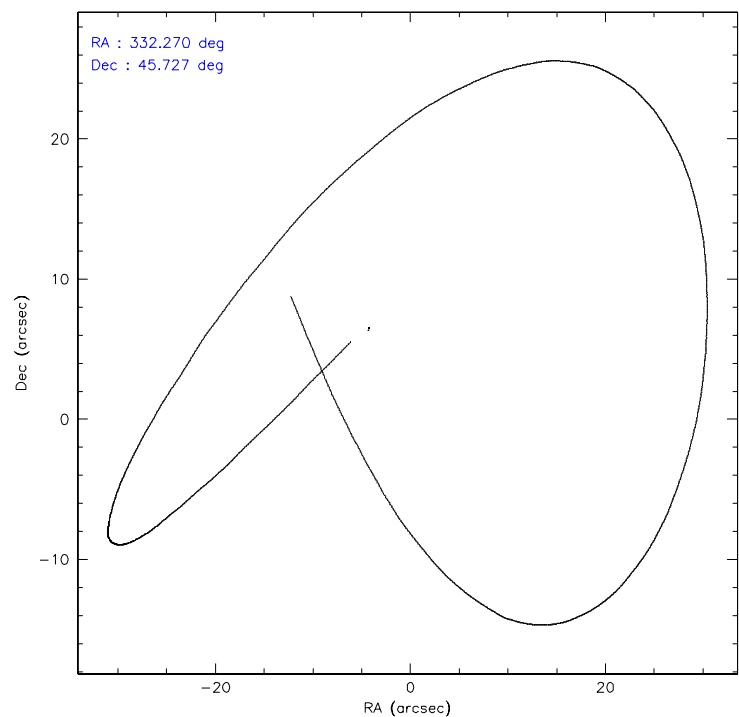


## 2.2 Compared Parameters

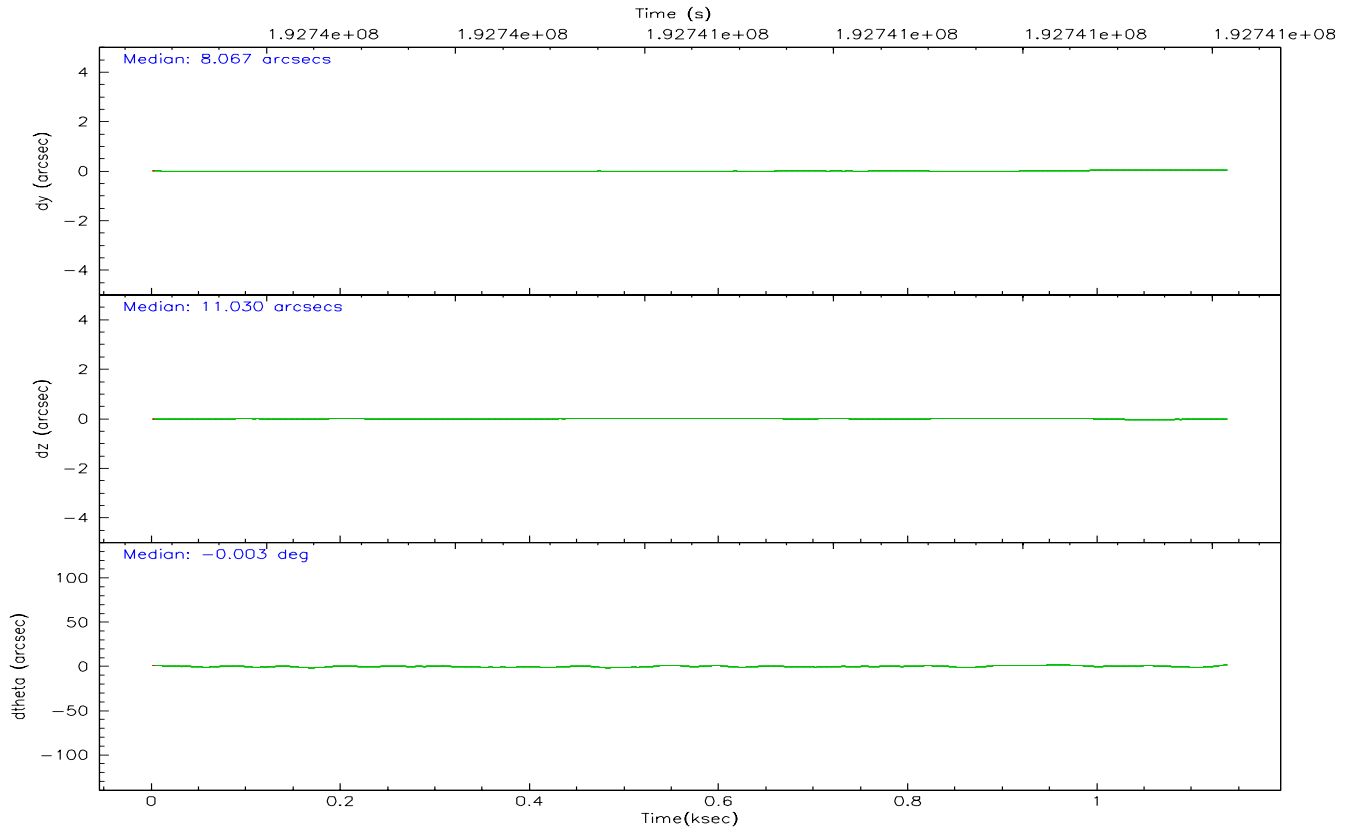
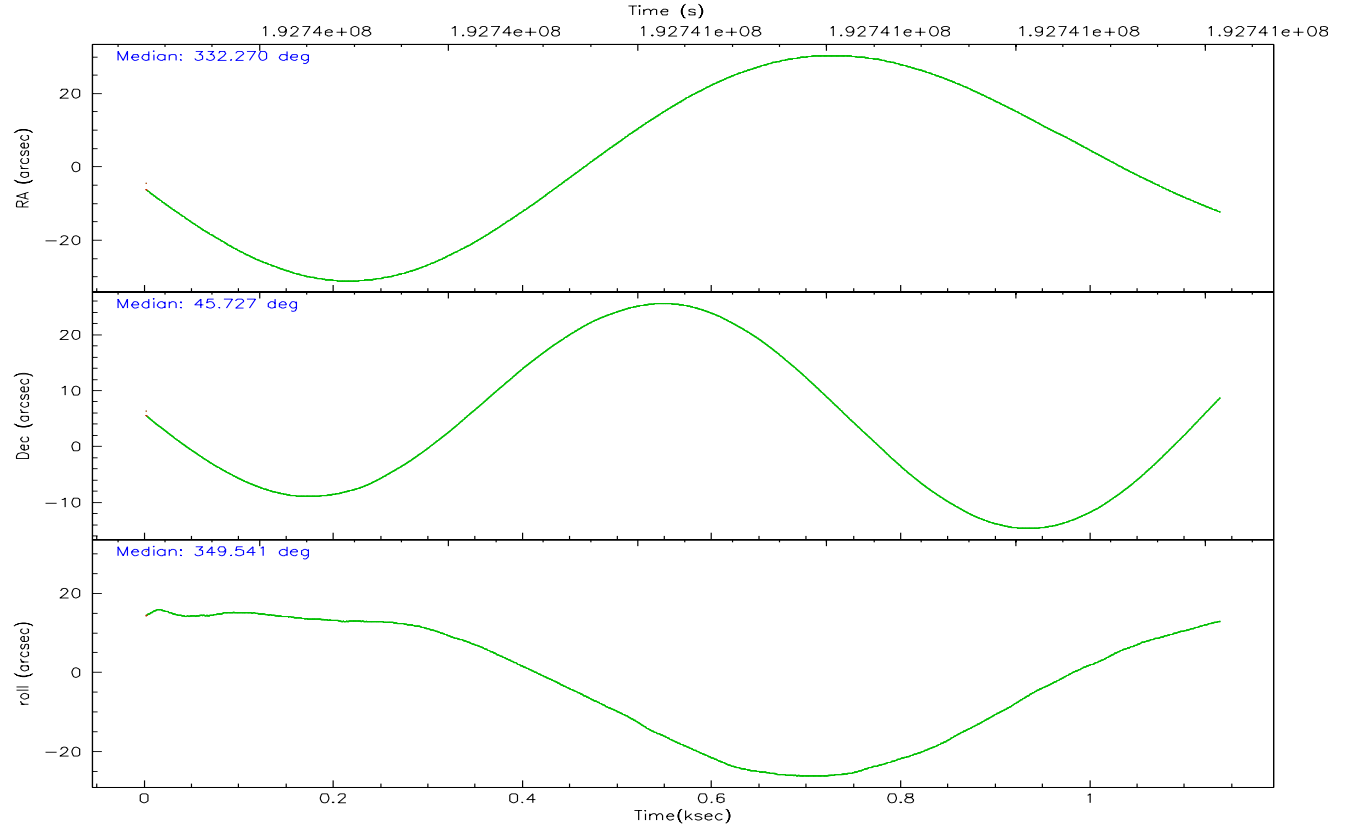
Parameter	Planned	Actual	Parameter	Planned	Actual
Instrument	HRC	HRC	Obspar format version number	6	6
Detector	HRC-S	HRC-S	Obspar file type	PREDICTED	ACTUAL
Grating	NONE	NONE	Obspar update status	NONE	UPDATED
Data mode	OBSERVING	OBSERVING			
Observation mode	POINTING	POINTING			
Pointing RA	332.232602	332.2700068861731			
Pointing Dec	45.718303	45.72807430028507			
Pointing Roll	349.507870	349.5484421485201			
SIM focus pos (mm)	-1.429586	-1.428180813131781			
SIM defocus (mm)	0.1037507710433287	0.1051558262725154			
SIM translation stage pos (mm)	250.455976	250.466033080201			
SIM translation stage offset (mm)	0	-0.01005468664627074			
Observation start time	192740273.184000	192739897.22289			
Observation start date	2004-02-09T18:56:49	2004-02-09T18:51:37			
Observation end time	192741219.184000	192741352.72296			
Observation end date	2004-02-09T19:12:35	2004-02-09T19:15:52			



### 2.3 Aspect









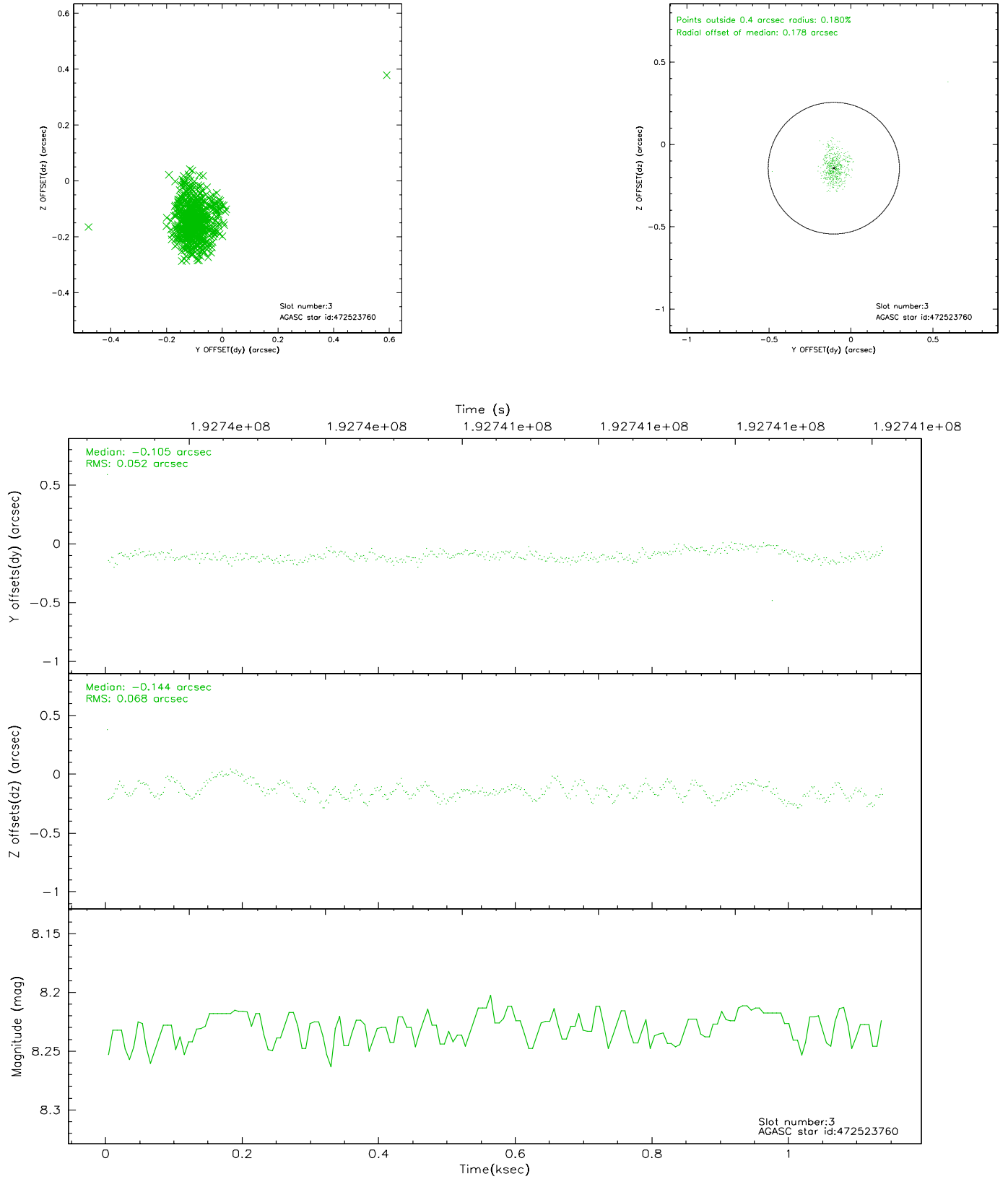
### Slot Statistics

slot	status	id	mag	n_pts	med_dy	med_dz	dr1	dr2	ra	dec	mean_y	mean_z
0	FID	HRC-S-1	7.03	278	0.150	-0.166	0.006	0.010	0.000000	0.000000	-1162.23	-459.74
1	FID	HRC-S-2	7.02	278	0.129	-0.108	0.004	0.009	0.000000	0.000000	1233.25	-454.00
2	FID	HRC-S-3	7.04	278	0.112	-0.028	0.006	0.011	0.000000	0.000000	-1160.54	568.30
3	GUIDE	472523760	8.23	555	-0.105	-0.144	0.083	0.133	331.645363	45.403260	-1253.28	-1376.12
4	GUIDE	472533912	9.17	547	-0.008	0.019	0.111	0.168	331.791136	46.368695	-1507.40	2107.29
5	GUIDE	472654568	9.44	554	-0.020	-0.022	0.105	0.167	332.194449	45.063576	332.02	-2327.06
6	GUIDE	472655152	9.43	555	0.103	0.037	0.105	0.162	332.504239	45.862991	575.81	637.59
7	GUIDE	472659832	9.46	554	0.027	0.108	0.106	0.169	332.780399	46.098139	1096.22	1604.00



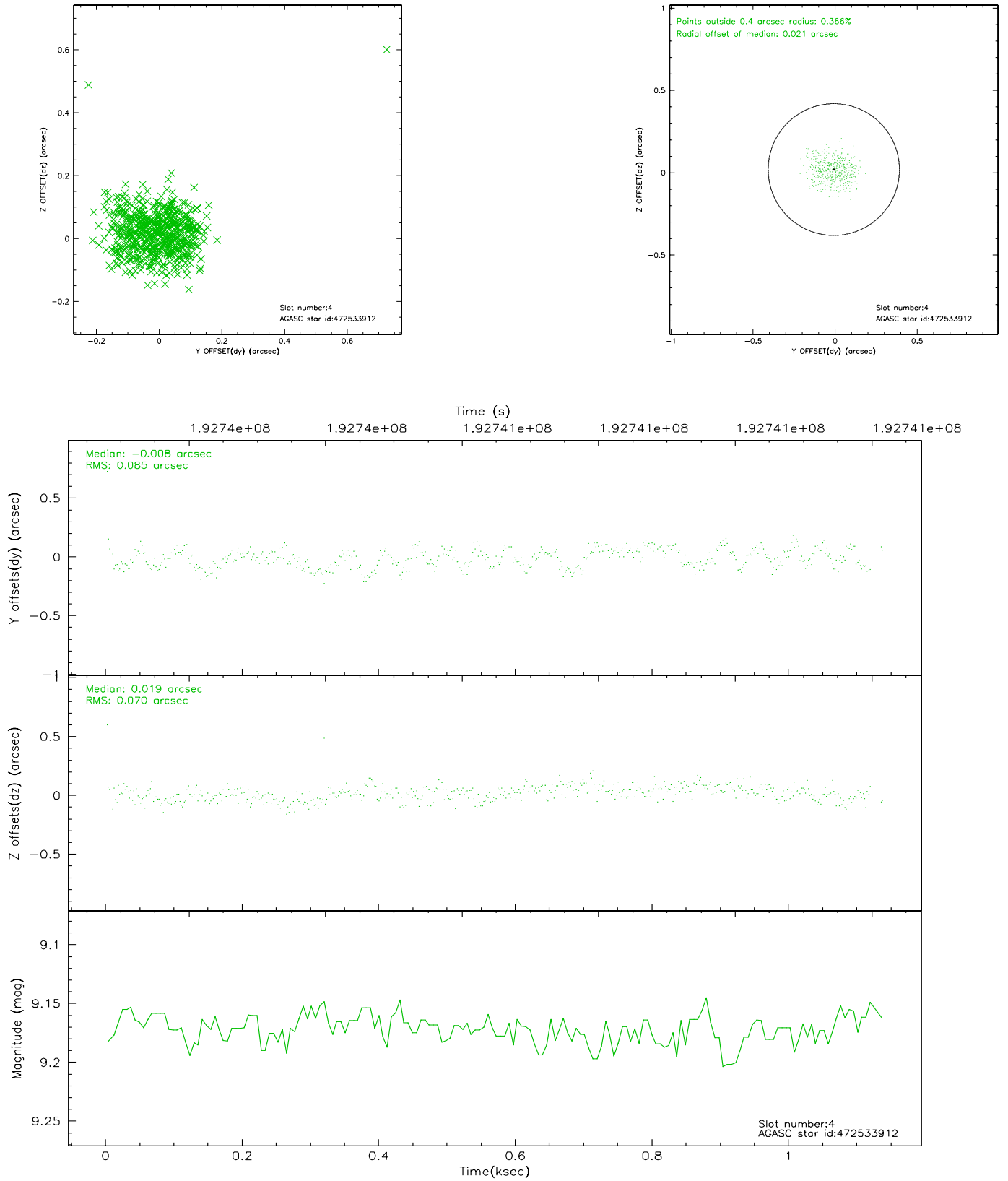
## 2.4 Star Slots

### 2.4.1 Slot 3



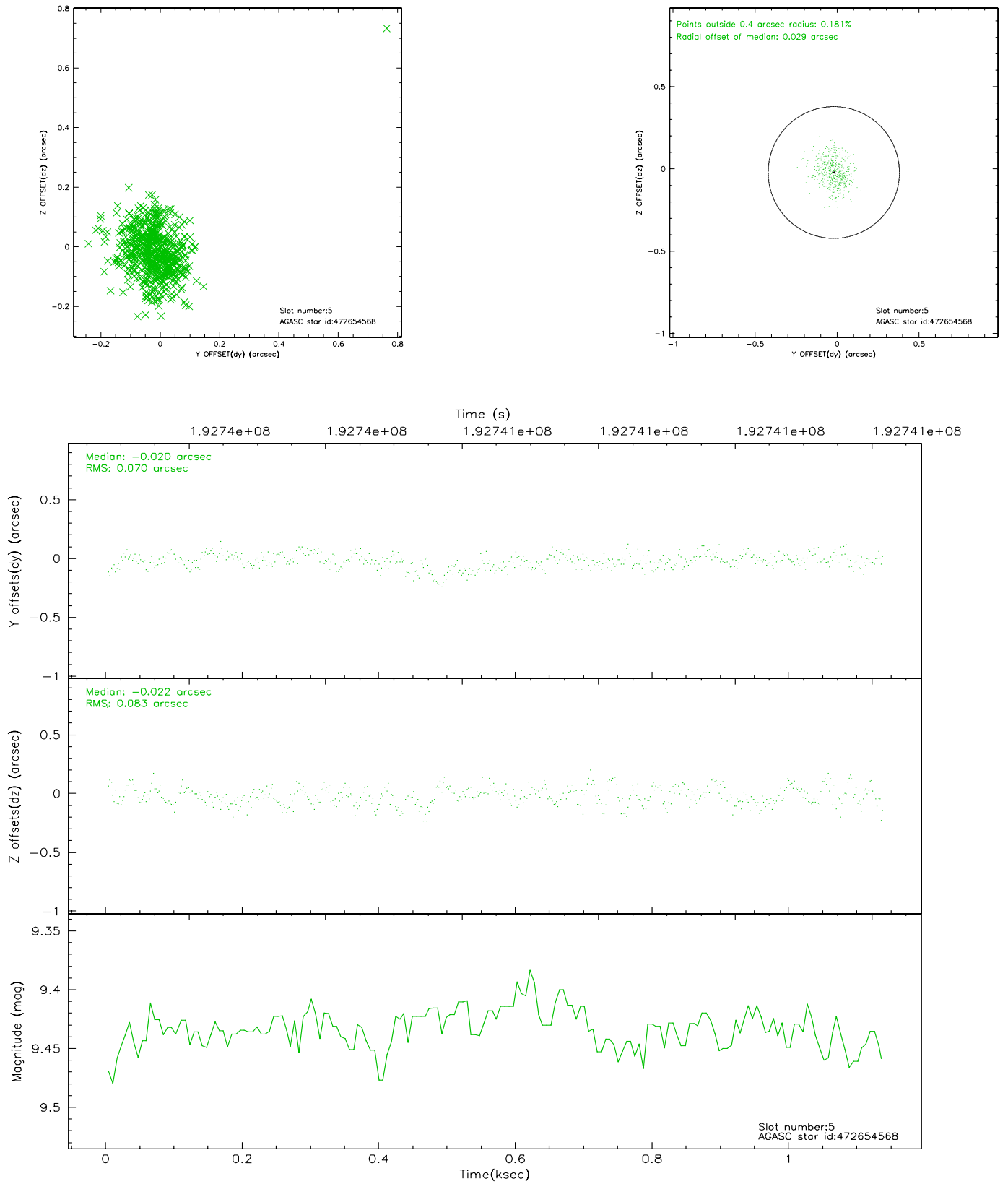


## 2.4.2 Slot 4



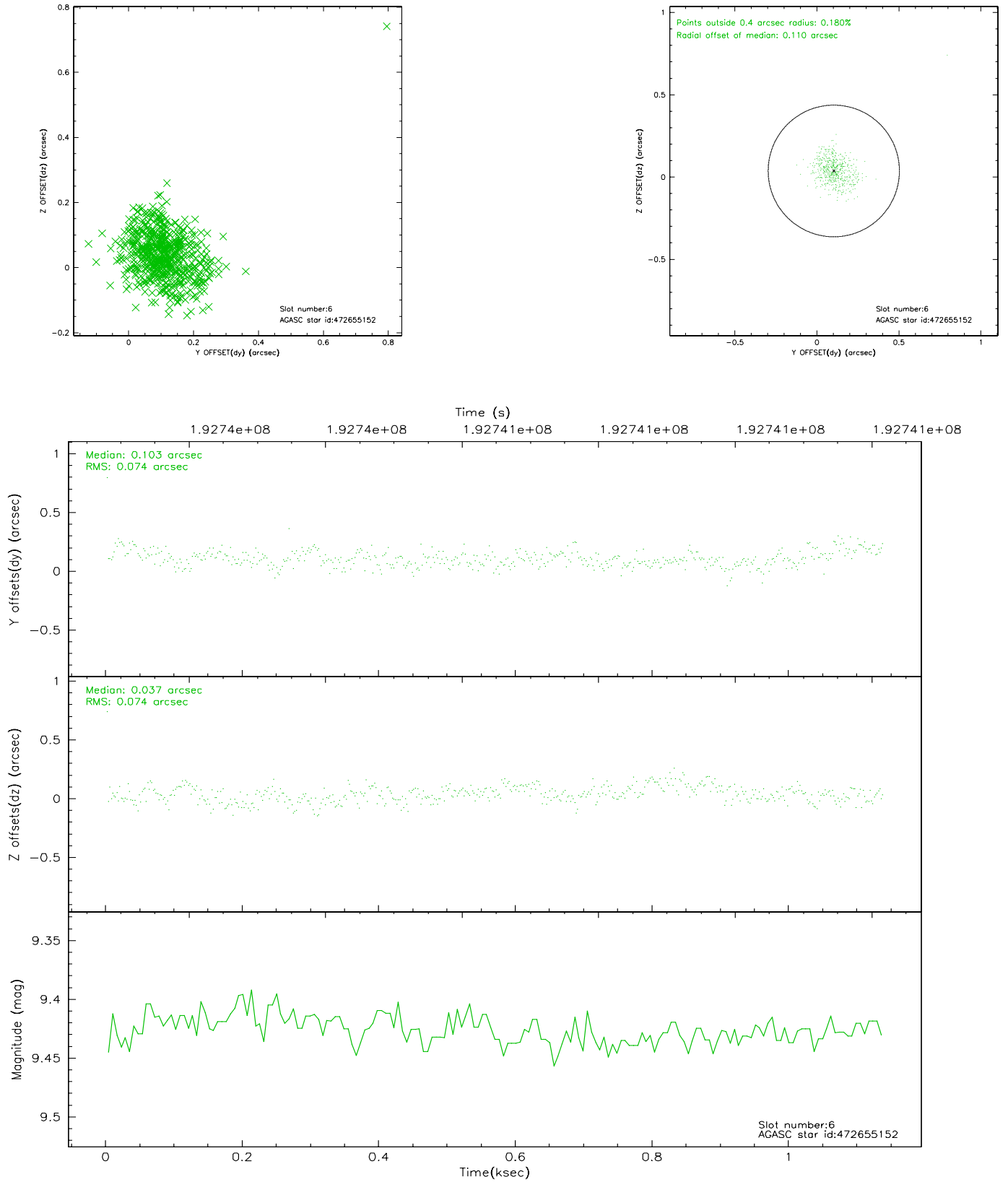


### 2.4.3 Slot 5



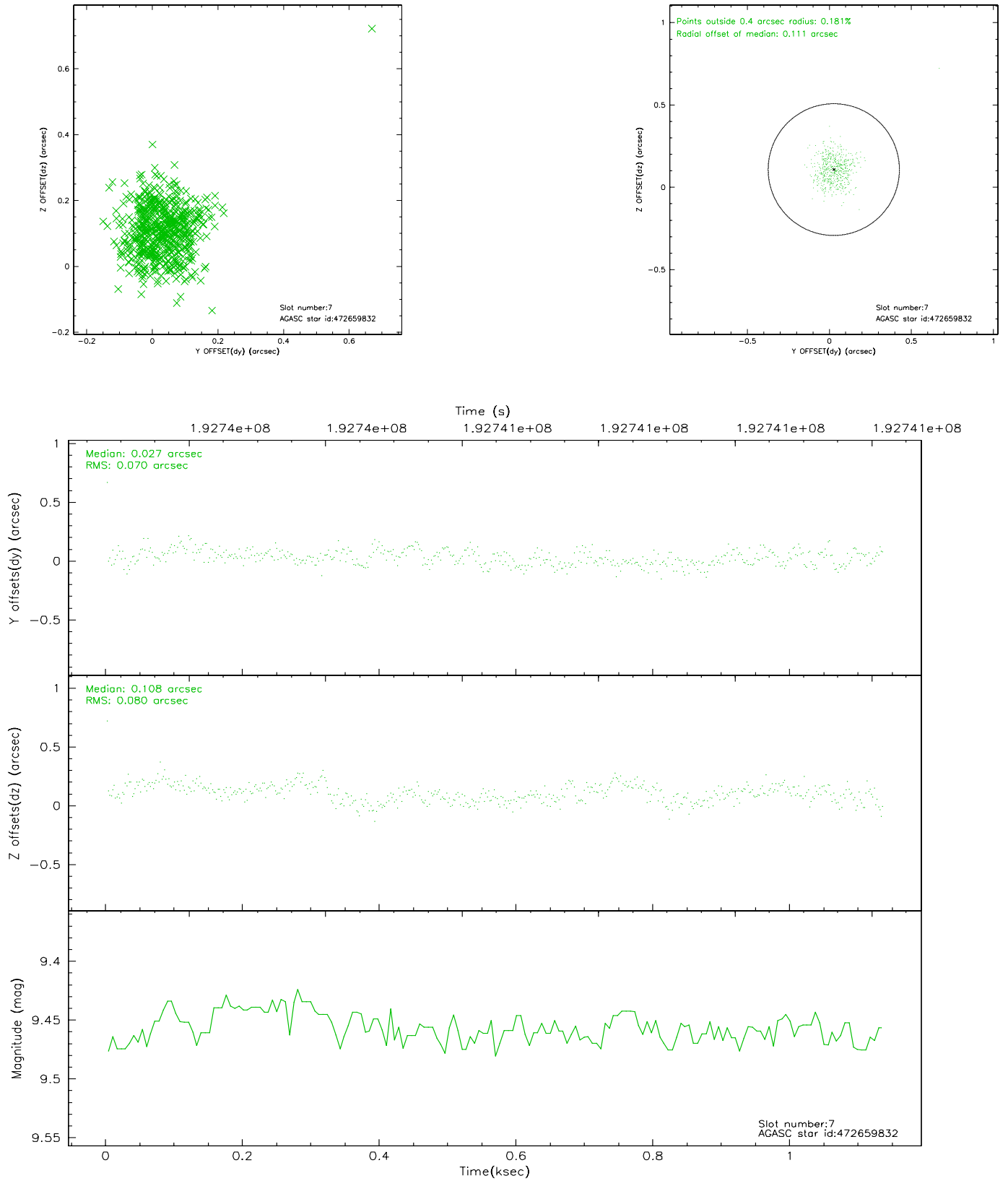


## 2.4.4 Slot 6





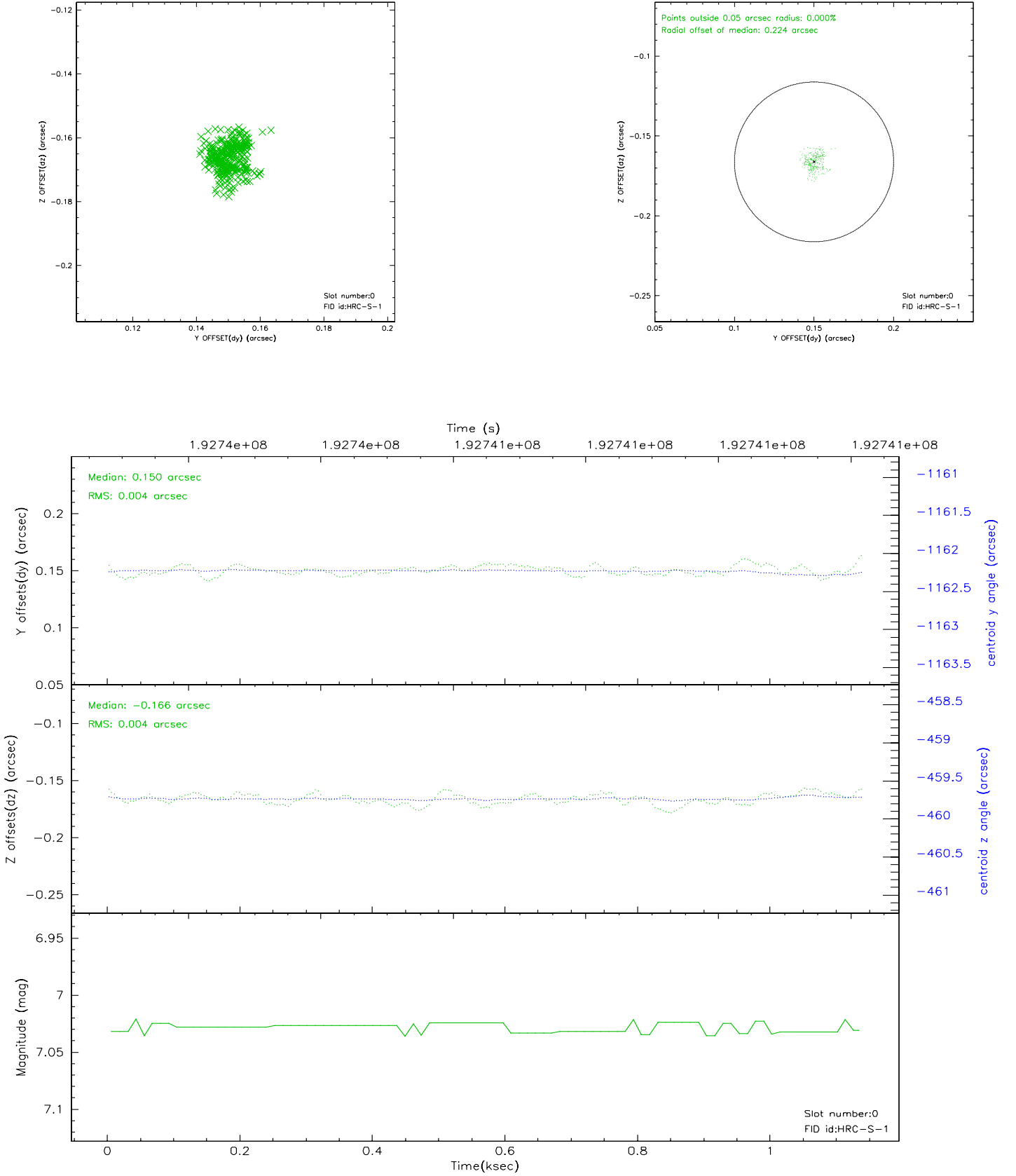
## 2.4.5 Slot 7





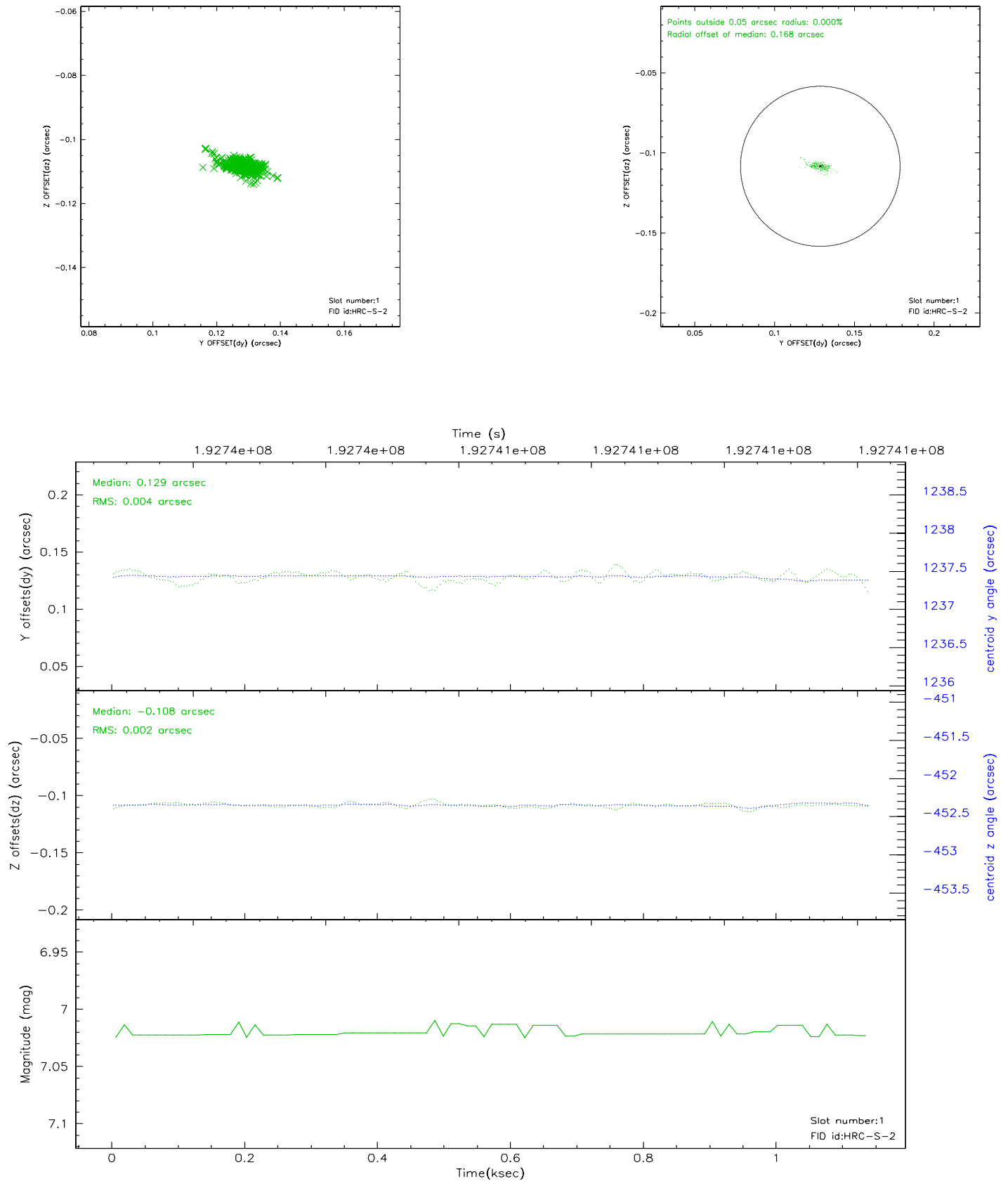
## 2.5 FID Slots

### 2.5.1 Slot 0



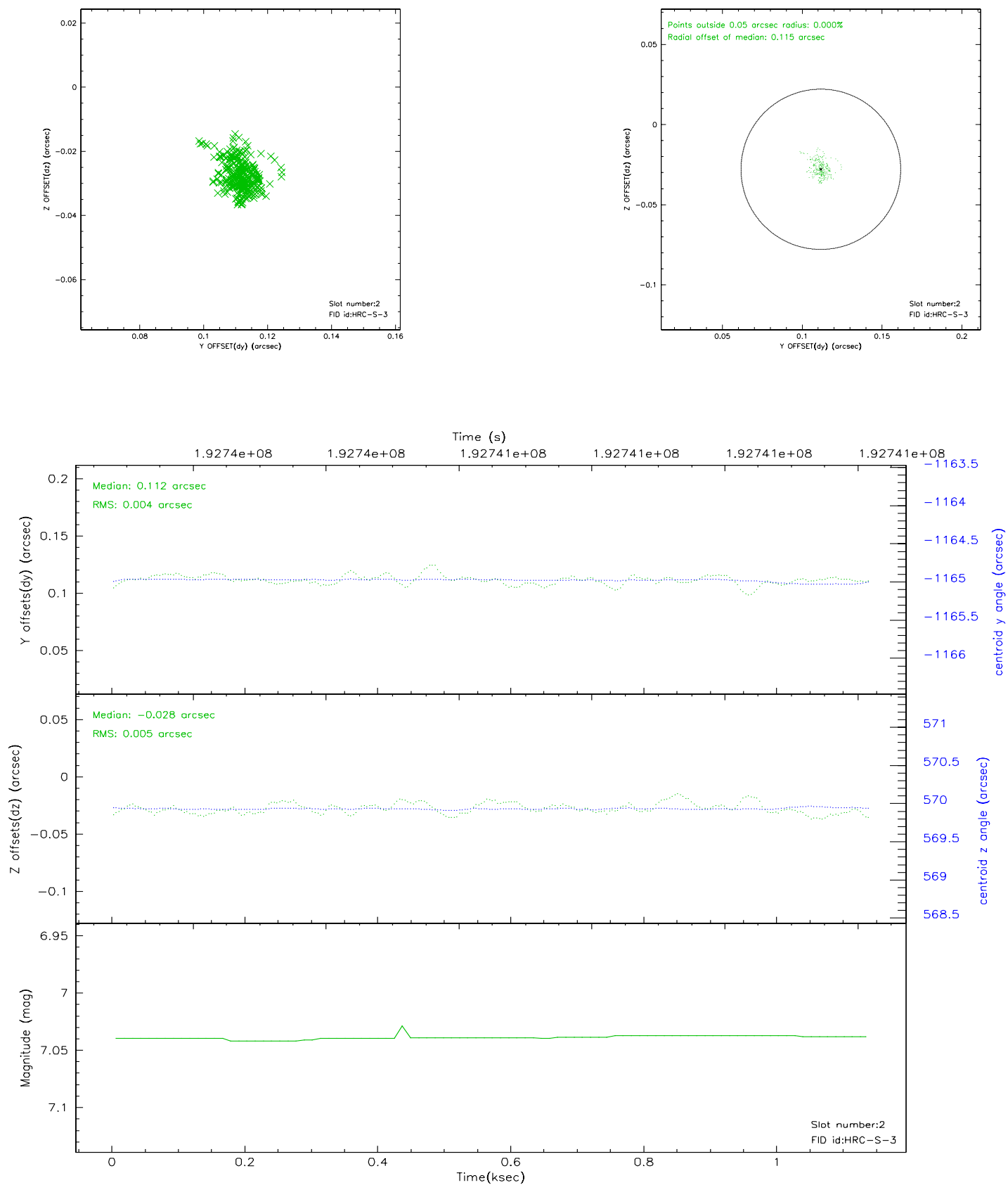


## 2.5.2 Slot 1



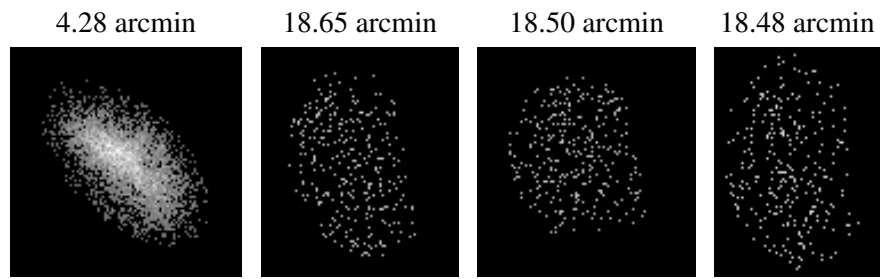


### 2.5.3 Slot 2





### 3 Point Sources





## A Summary

### A.1 Status

V&V Scientist	Doug Morgan
V&V Date (YYYY-MM-DD)	2006.06.05
V&V Edition	1
V&V Disposition and Status	OK
V&V Charge Time	1.087

### A.2 Comments