

V&V Reference Report

L2 ASCDS Version : 8.4.5

Observation 3700 - L2 Version 5
Chandra X-Ray Center

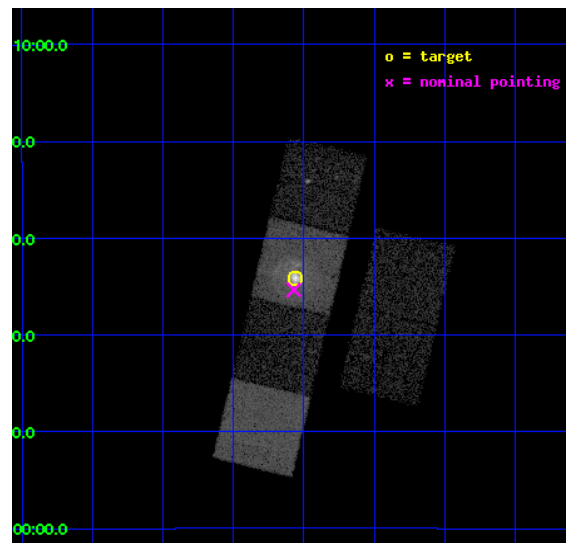
L2 Processing Date : Jan 23 2013

Contents

1	Front	2
2	OBI	3
2.1	OBI	3
2.1.1	Images	3
2.1.2	Bias	3
2.1.3	Parameters	4
2.1.4	Events	4
2.2	Compared Parameters	5
2.3	Aspect	6
2.4	Star Slots	9
2.4.1	Slot 3	9
2.4.2	Slot 5	10
2.4.3	Slot 6	11
2.4.4	Slot 7	12
2.5	FID Slots	13
2.5.1	Slot 0	13
2.5.2	Slot 1	14
2.5.3	Slot 2	15
A	Summary	16
A.1	Status	16
A.2	Comments	16

1 Front

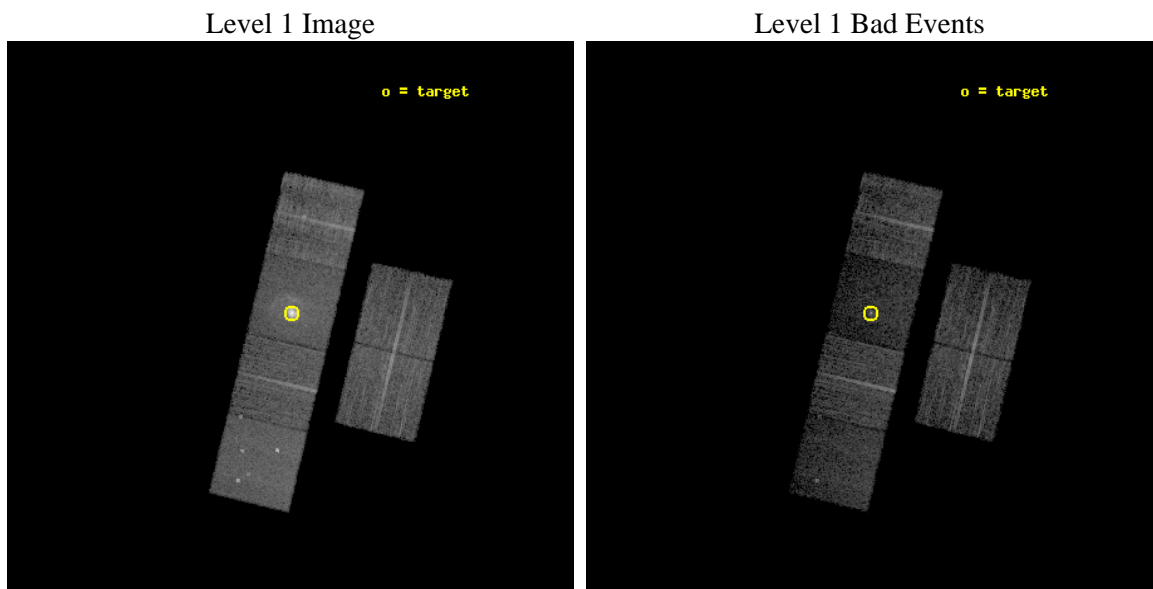
seq_num	590312	Sequence number
obs_id	3700	Observation id
title	AO4B OBSERVATIONS OF THE STANDARD CANDLES CAS A AND G21.5-09	Propo
observer	Dr. CXC Calibration	Principal investigator
object	G21.5-0.9[Chip S3, T=120, Offsets=-1.0,0,0]	Source name
dtcycle	0	
cycle	P	events from which exps? Prim/Second/Both
ra_targ	278.389583	Observer's specified target RA [deg]
dec_targ	-10.568528	Observer's specified target Dec [deg]
ra_nom	278.39273292757	Nominal RA [deg]
dec_nom	-10.589061022264	Nominal Dec [deg]
roll_nom	283.35691475126	Nominal Roll [deg]
revision	5	Processing version of data
ontime	9662.9863280952	Sum of GTIs [s]
livetime	9540.627776857	Livetime [s]
ontime2	9659.7864078581	Sum of GTIs [s]
ontime3	9662.8632080853	Sum of GTIs [s]
ontime5	9662.9452880919	Sum of GTIs [s]
ontime6	9662.9042480886	Sum of GTIs [s]
ontime7	9662.9863280952	Sum of GTIs [s]
ontime8	9662.8221681118	Sum of GTIs [s]
l2events	102154	Number of level 2 events



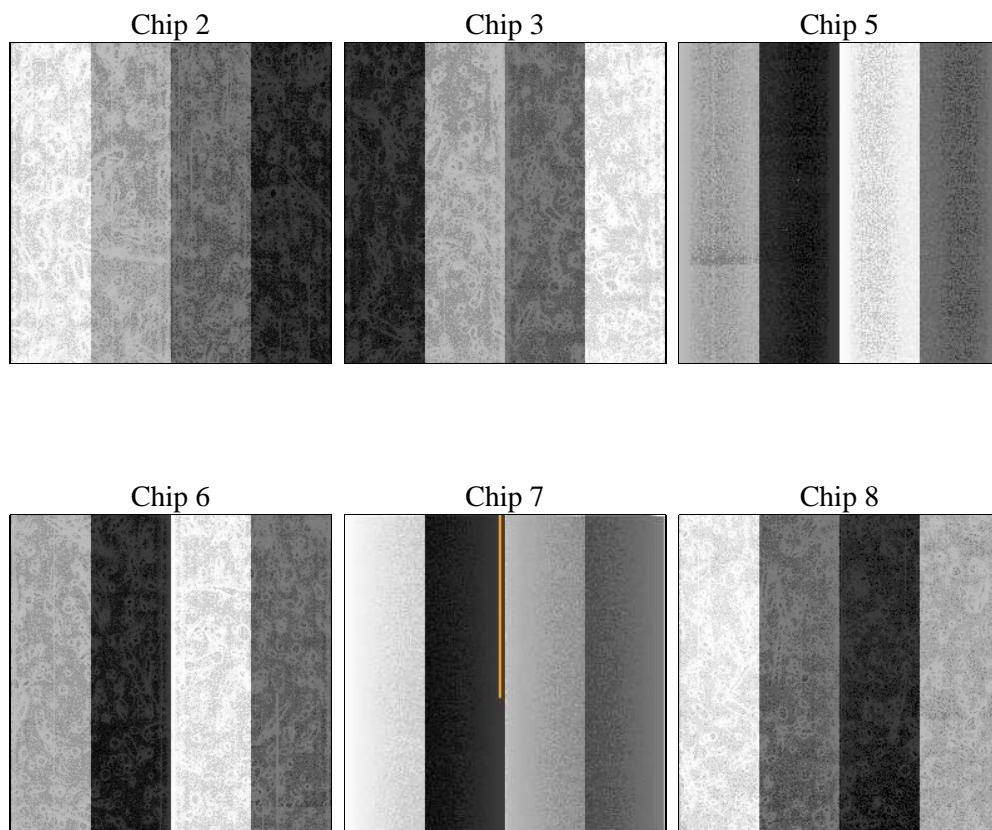
2 OBI

2.1 OBI

2.1.1 Images



2.1.2 Bias



2.1.3 Parameters

obi_num	1	Obi number	sched_exp_time	9700.000000	[s] Scheduled observation exposure time
ascdsver	8.5.1.1	Processing system revision	ontime	9662.9863280952	Sum of GTIs [s]
caldsver	4.5.5	 	ontime2	9659.7864078581	Sum of GTIs [s]
date	2013-01-23T22:44:23	Date and time of file creation	ontime3	9662.8632080853	Sum of GTIs [s]
revision	5	Processing version of data	ontime5	9662.9452880919	Sum of GTIs [s]
			ontime6	9662.9042480886	Sum of GTIs [s]
			ontime7	9662.9863280952	Sum of GTIs [s]
			ontime8	9662.8221681118	Sum of GTIs [s]
			l1events	327856	Number of level 1 events

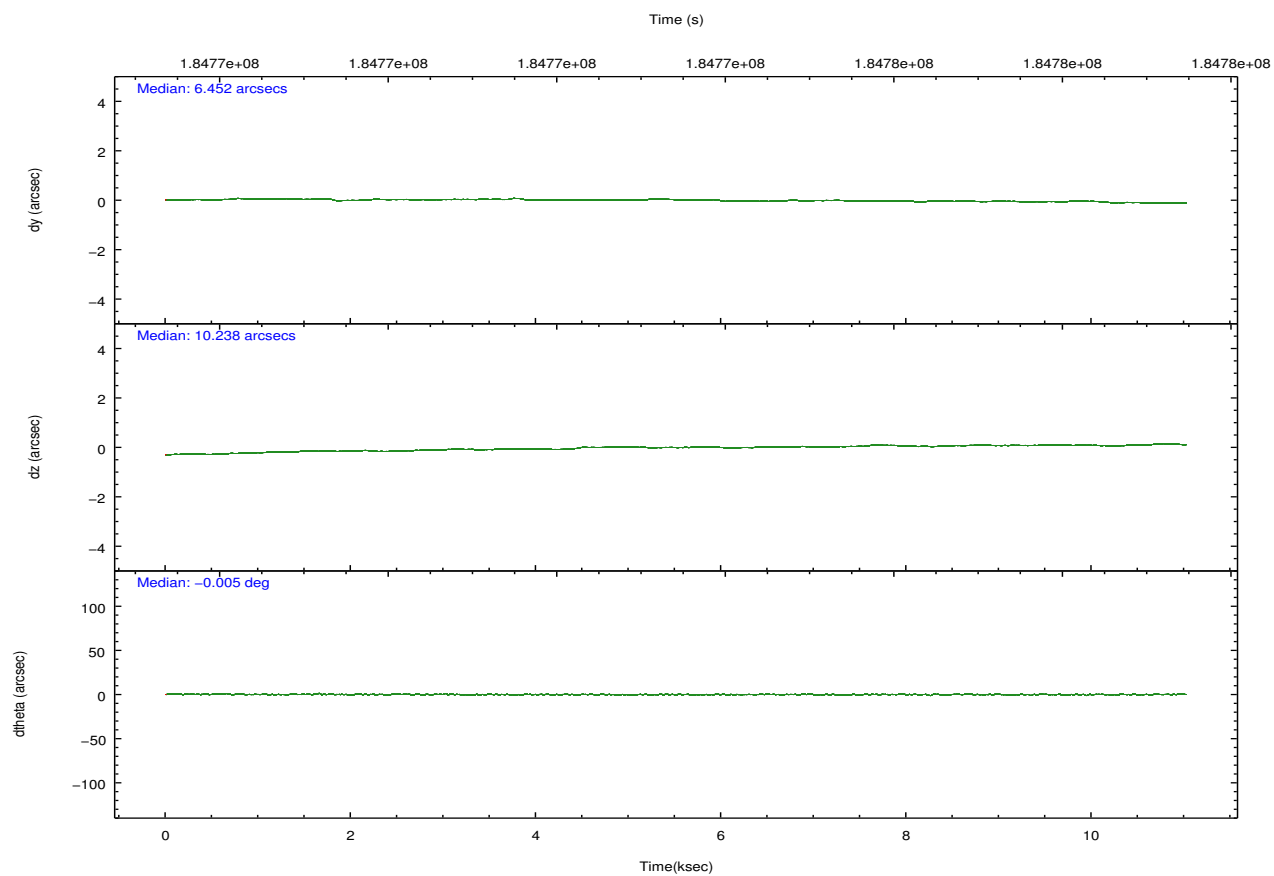
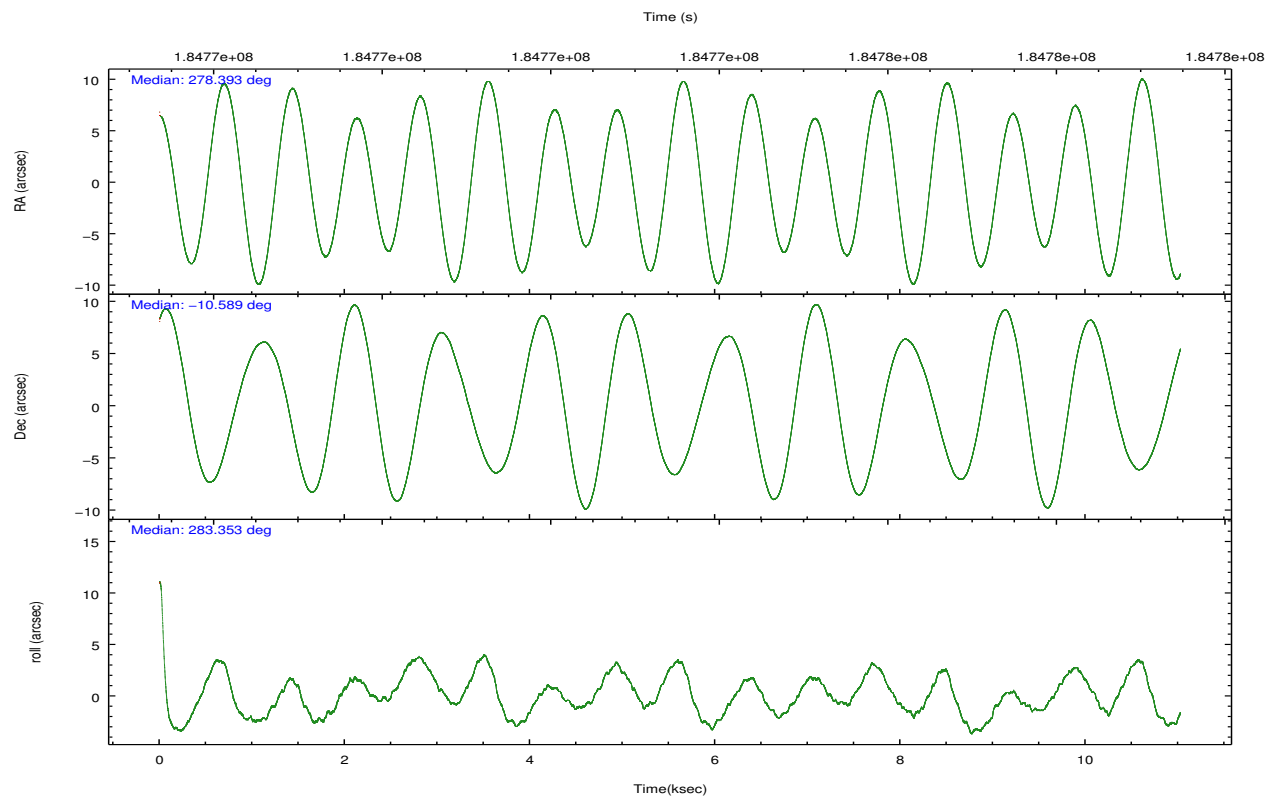
2.1.4 Events

	ccd 2	ccd 3	ccd 5	ccd 6	ccd 7	ccd 8		ccd 2	ccd 3	ccd 5	ccd 6	ccd 7	ccd 8
level 1 events	47913	43035	57491	45383	78030	56004	grade 0 events	2111	2056	5822	2385	10283	5233
rejected events	42838	38130	25230	39790	21245	40034		4%	4%	10%	5%	13%	9%
rejected %	89%	88%	43%	87%	27%	71%	grade 1 events	17	16	276	22	113	31
								0%	0%	0%	0%	0%	0%
							grade 2 events	1131	976	9108	1058	13451	3282
								2%	2%	15%	2%	17%	5%
							grade 3 events	502	530	1431	557	6178	1896
								1%	1%	2%	1%	7%	3%
							grade 4 events	507	506	1395	566	6087	1739
								1%	1%	2%	1%	7%	3%
							grade 5 events	1262	1389	4442	1456	4698	2123
								2%	3%	7%	3%	6%	3%
							grade 6 events	827	842	14519	1029	20824	3852
								1%	1%	25%	2%	26%	6%
							grade 7 events	41556	36720	20498	38310	16396	37848
								86%	85%	35%	84%	21%	67%

2.2 Compared Parameters

Parameter	Planned	Actual	Parameter	Planned	Actual
Instrument	ACIS	ACIS	Obspar format version number	7	7
Detector	ACIS-235678	ACIS-235678	Obspar file type	PREDICTED	ACTUAL
Grating	NONE	NONE	Obspar update status	NONE	UPDATED
Data mode	VFAINT	VFAINT	Number of optional ACIS chips dropped	0	0
Observation mode	POINTING	POINTING	On-chip summing requested	N	N
[deg] Pointing RA	278.373446	278.3927329275745	Subarray requested	NONE	NONE
[deg] Pointing Dec	-10.569512	-10.58906102226434	Alternating exposures requested	N	N
[deg] Pointing Roll	283.196743	283.3569147512629	[s] Primary exposure time	0.000000	3.2
[s] Window start time (MET)	182563264.184000	182563264.184000			
[s] Window stop time (MET)	185241664.184000	185241664.184000			
[mm] SIM focus pos	-0.684267	-0.6828225247311905			
[mm] SIM defocus	0	0.001444936568705701			
[mm] SIM translation stage pos	-190.132523	-190.1425803651734			
[mm] SIM translation stage offset	0	0.01005778216563158			
[s] Observation start time (MET)	184769236.184000	184767706.71367			
Observation start date	2003-11-09T12:46:12	2003-11-09T12:21:46			
[s] Observation end time (MET)	184778936.184000	184779129.82667			
Observation end date	2003-11-09T15:27:52	2003-11-09T15:32:09			
Read mode	TIMED	TIMED			

2.3 Aspect

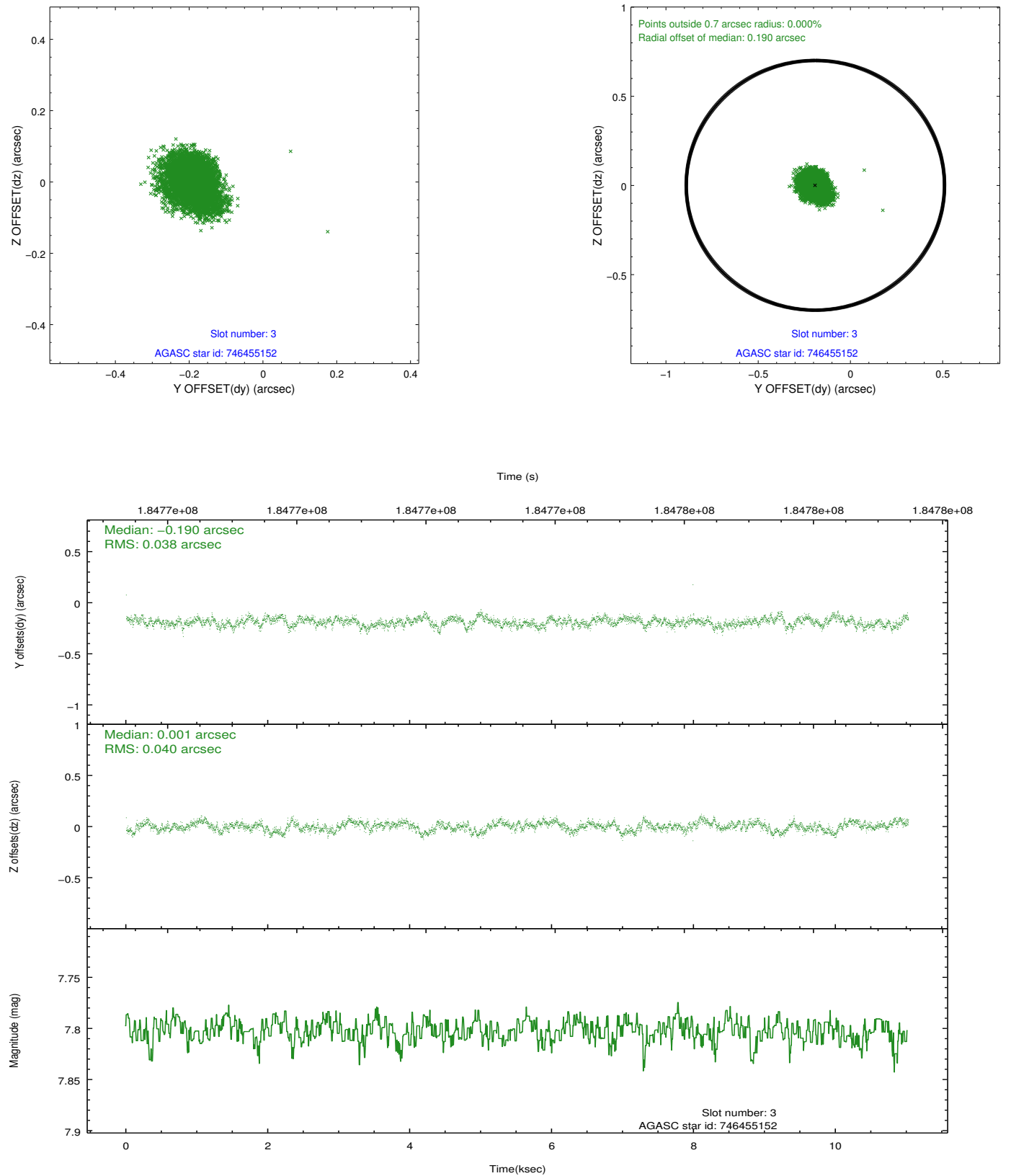


Slot Statistics

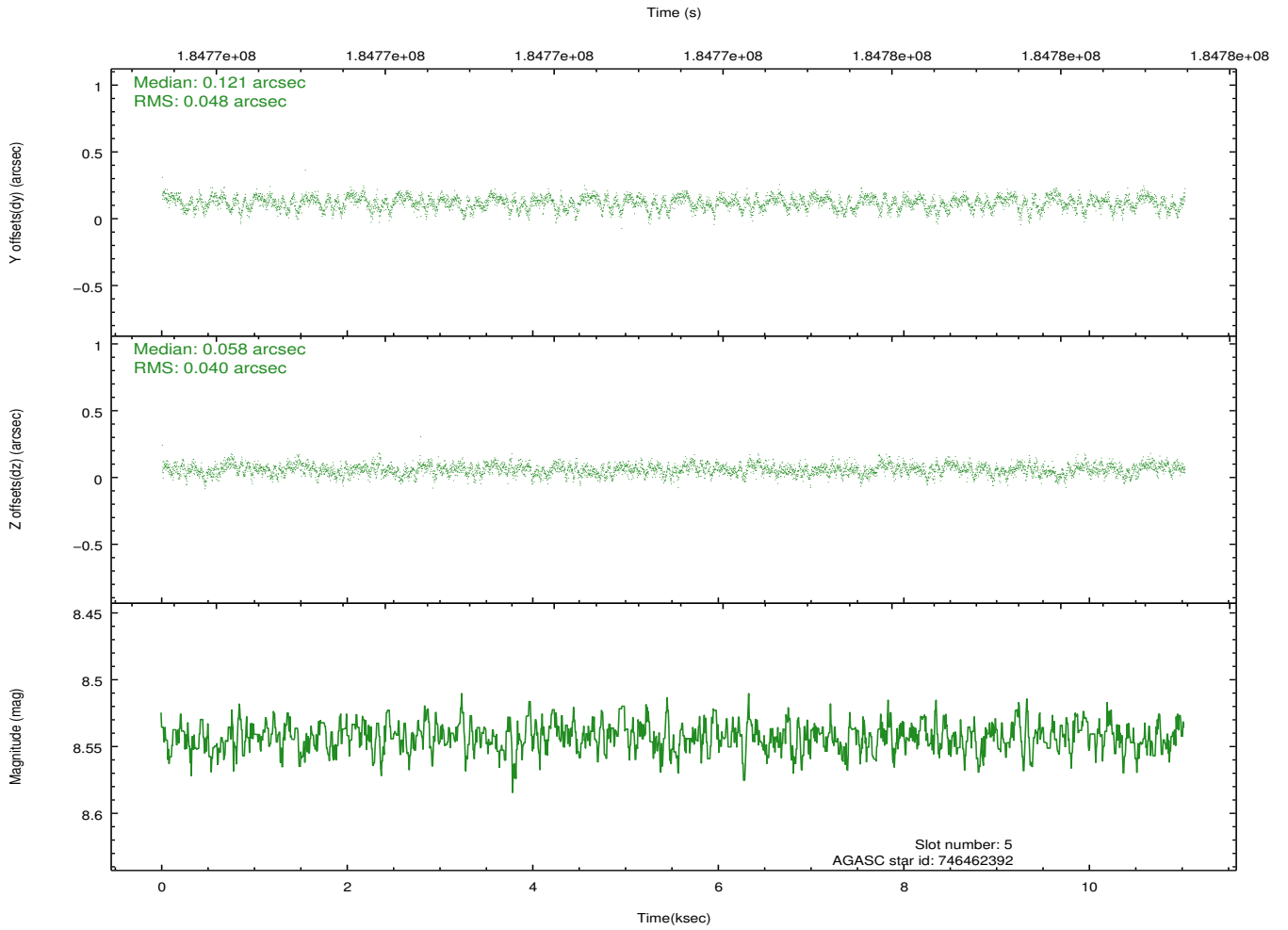
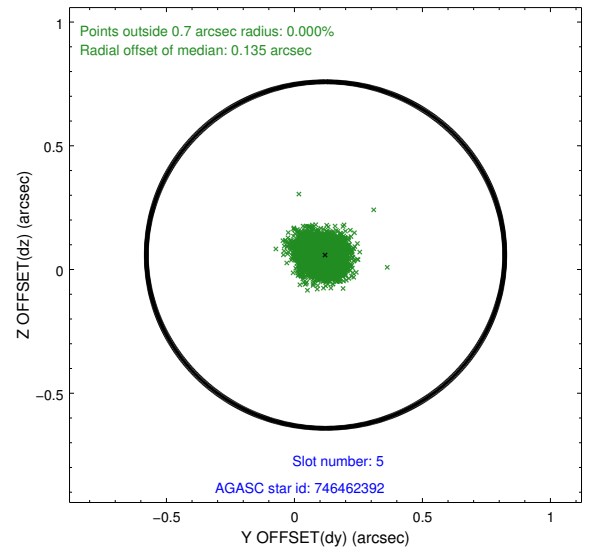
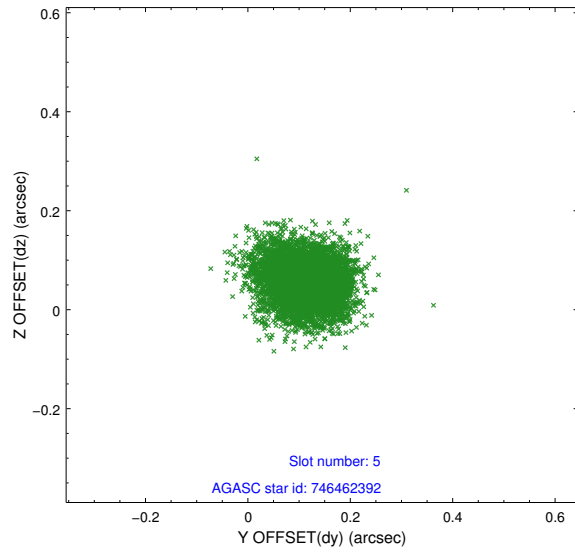
slot	status	id	mag	n_pts	med_dy	med_dz	dr1	dr2	ra	dec	mean_y	mean_z
0	FID	ACIS-S-2	7.10	2690	-0.058	-0.018	0.007	0.011	0.000000	0.000000	-759.21	-1731.43
1	FID	ACIS-S-4	7.20	2690	0.069	0.033	0.006	0.010	0.000000	0.000000	2153.95	176.66
2	FID	ACIS-S-5	7.23	2690	-0.042	-0.006	0.007	0.012	0.000000	0.000000	-1811.46	170.76
3	GUIDE	746455152	7.80	5378	-0.190	0.001	0.058	0.097	278.447893	-9.976732	-2017.44	744.12
4	OMITTED		0.00	0	0.000	0.000	0.000	0.000	0.000000	0.000000	0.00	0.00
5	GUIDE	746462392	8.54	5378	0.121	0.058	0.066	0.108	279.038421	-10.890715	1665.60	2024.91
6	GUIDE	746462456	8.38	5376	-0.070	0.083	0.058	0.096	278.652171	-10.530173	88.65	993.22
7	GUIDE	746995400	9.49	5371	0.144	-0.140	0.115	0.185	278.078957	-11.289885	2288.50	-1604.16

2.4 Star Slots

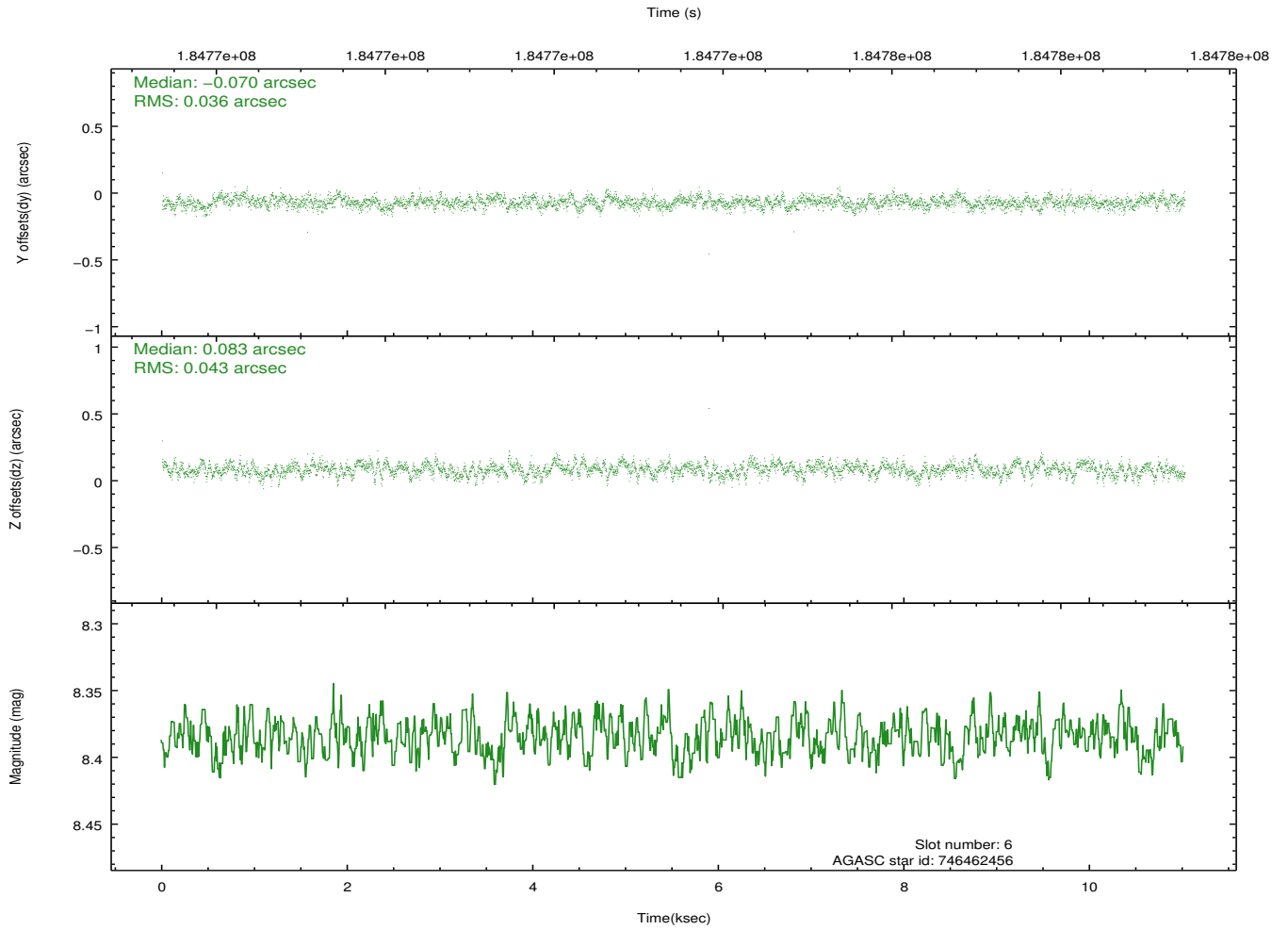
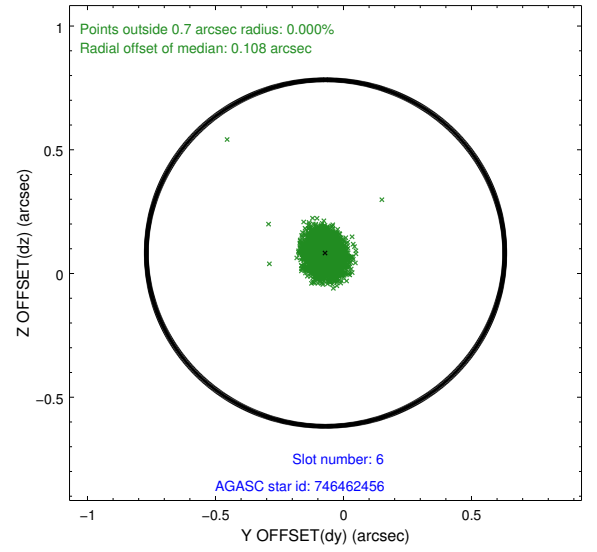
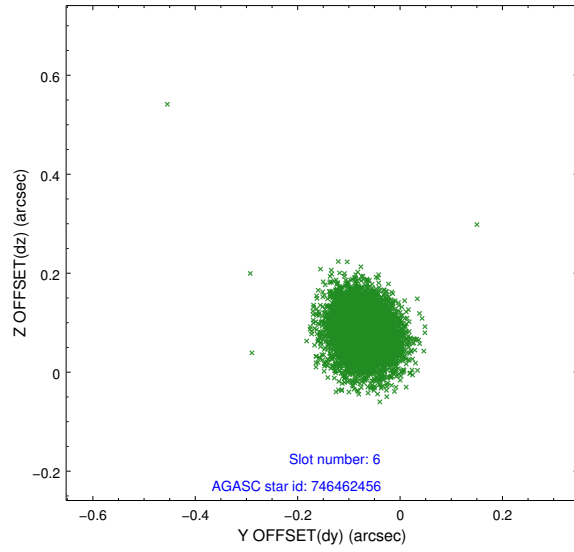
2.4.1 Slot 3



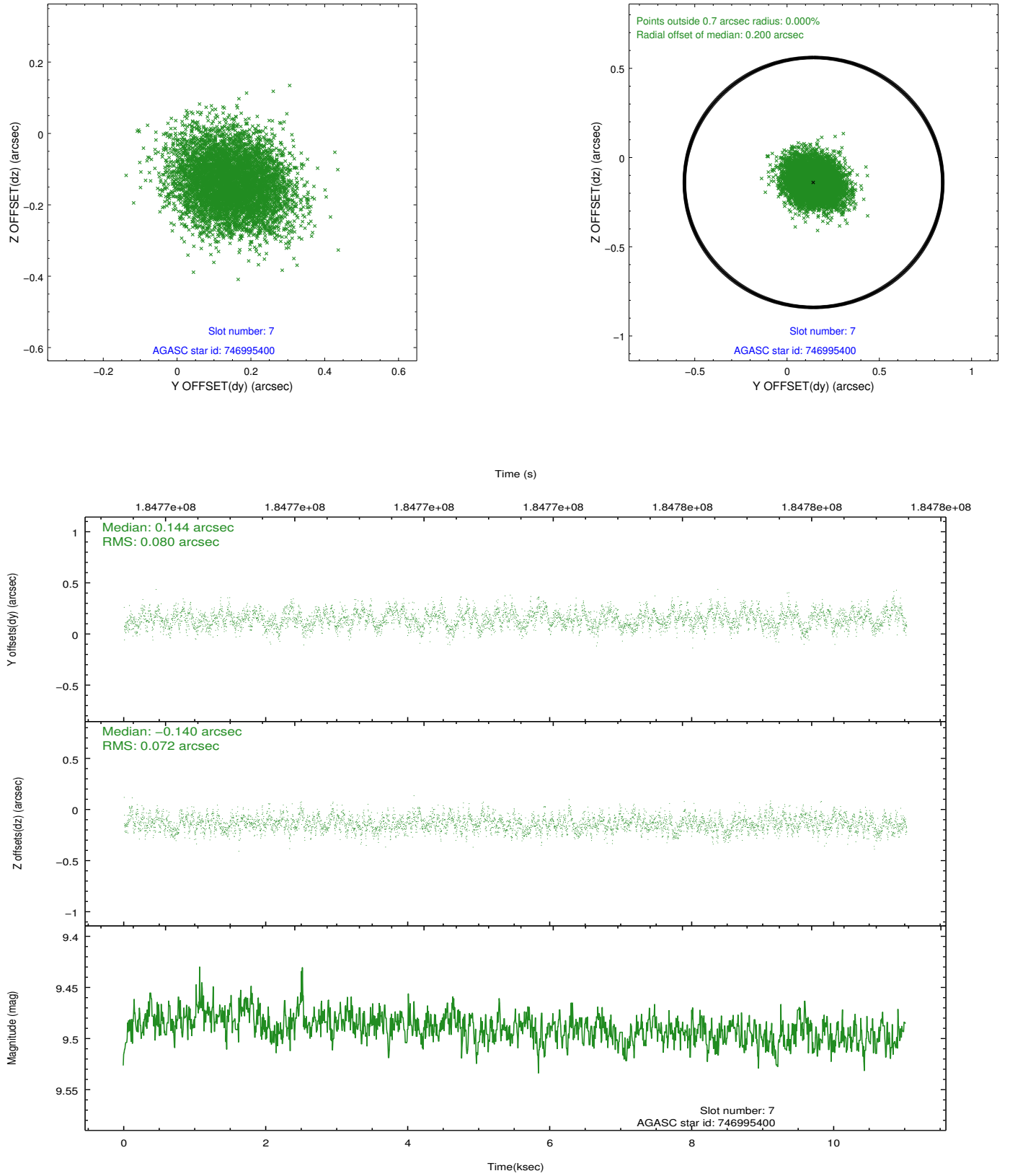
2.4.2 Slot 5



2.4.3 Slot 6

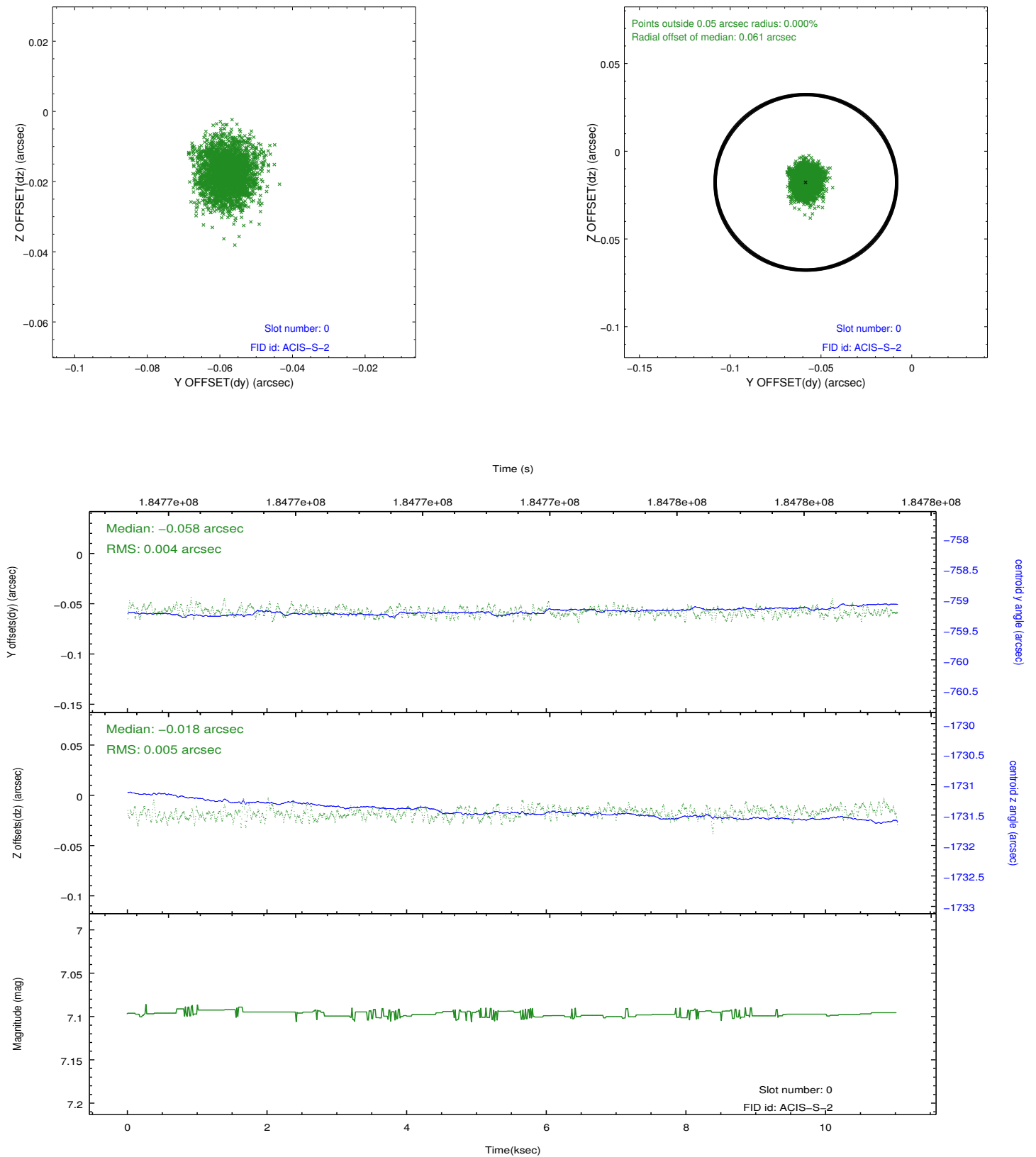


2.4.4 Slot 7

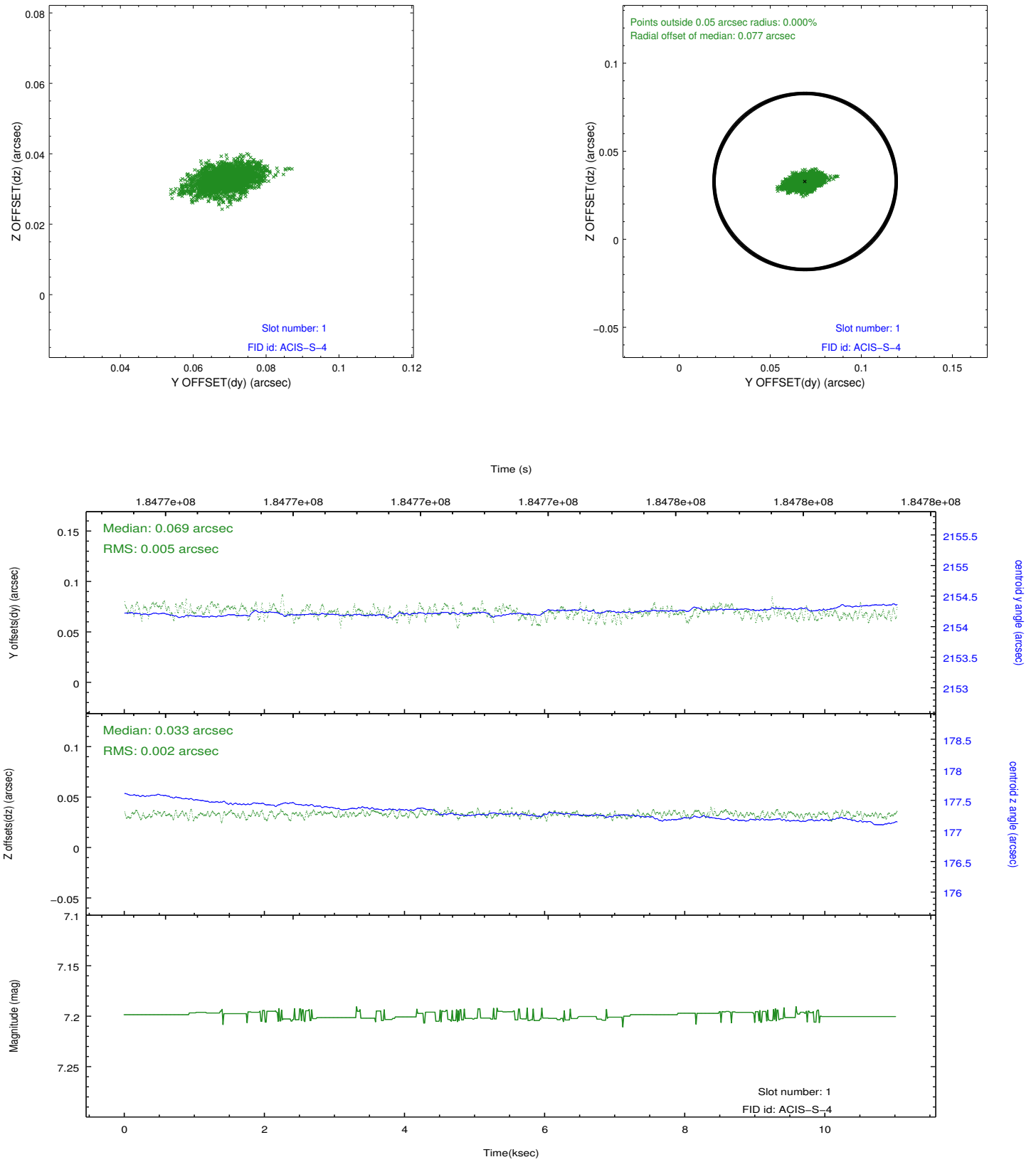


2.5 FID Slots

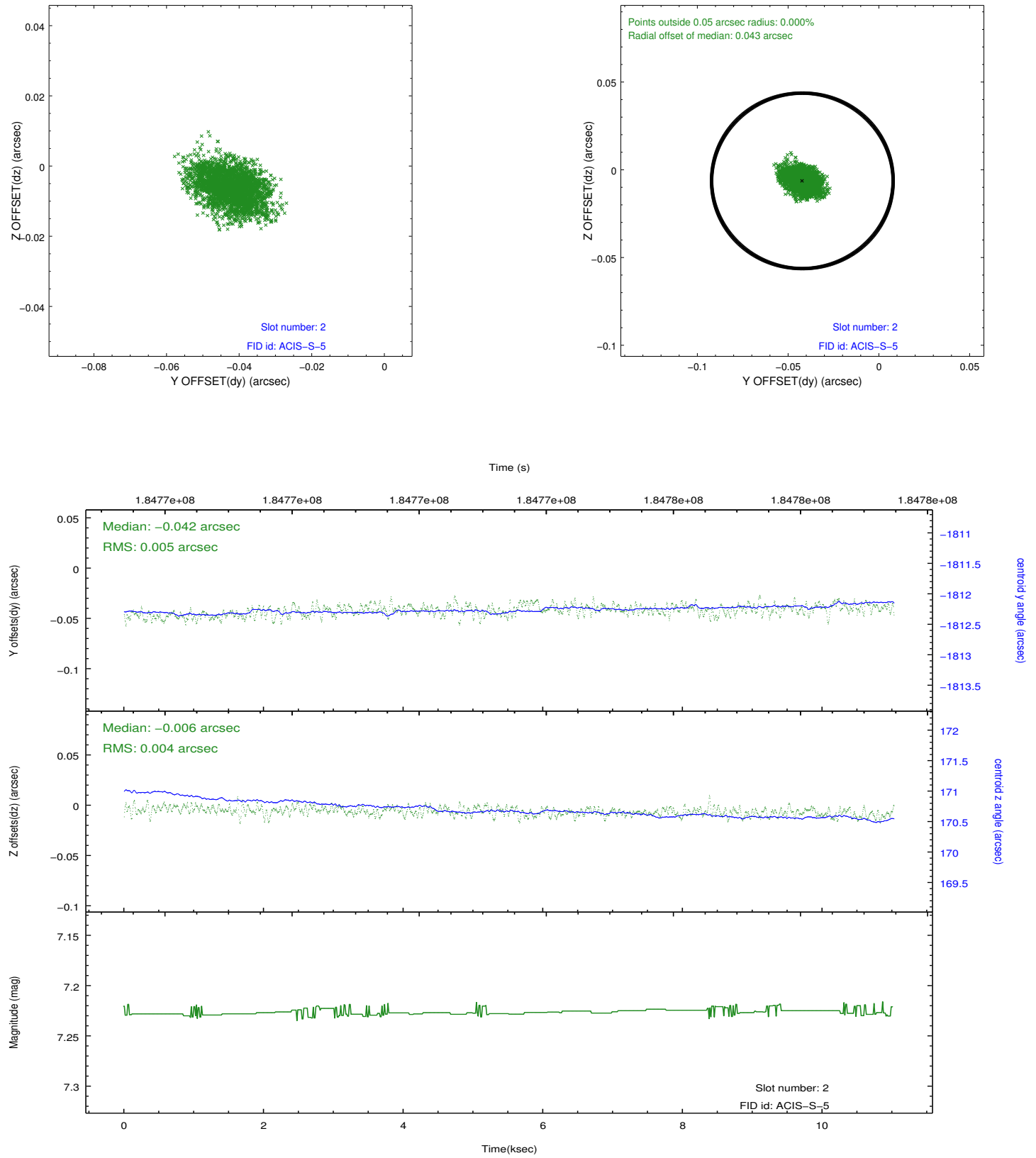
2.5.1 Slot 0



2.5.2 Slot 1



2.5.3 Slot 2



A Summary

A.1 Status

V&V Scientist	Beth Sundheim
V&V Date (YYYY-MM-DD)	2013.01.24
V&V Edition	1
V&V Disposition and Status	OK
V&V Charge Time	9.663

A.2 Comments

Window preference met.

The guide star in slot 4 was removed from the aspect solution due to poor data quality. The aspect solution is improved by the removal of this star from the solution.