

V&V Reference Report

L2 ASCDS Version : 8.4.5

Observation 3533 - L2 Version 3
Chandra X-Ray Center

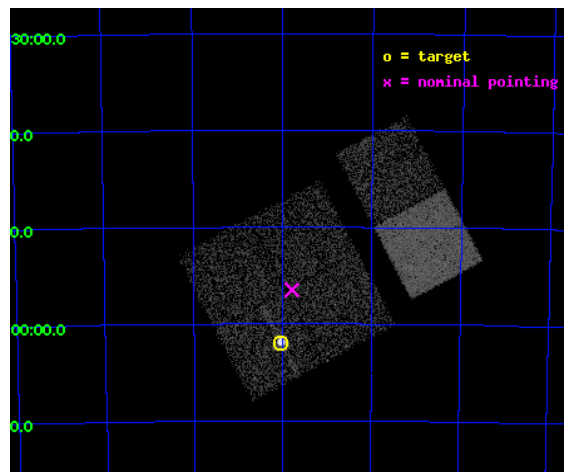
L2 Processing Date : Nov 3 2012

Contents

1	Front	2
2	OBI	3
2.1	OBI	3
2.1.1	Images	3
2.1.2	Bias	3
2.1.3	Parameters	4
2.1.4	Events	4
2.2	Compared Parameters	5
2.3	Aspect	6
2.4	Star Slots	9
2.4.1	Slot 3	9
2.4.2	Slot 4	10
2.4.3	Slot 5	11
2.4.4	Slot 6	12
2.4.5	Slot 7	13
2.5	FID Slots	14
2.5.1	Slot 0	14
2.5.2	Slot 1	15
2.5.3	Slot 2	16
A	Summary	17
A.1	Status	17
A.2	Comments	17

1 Front

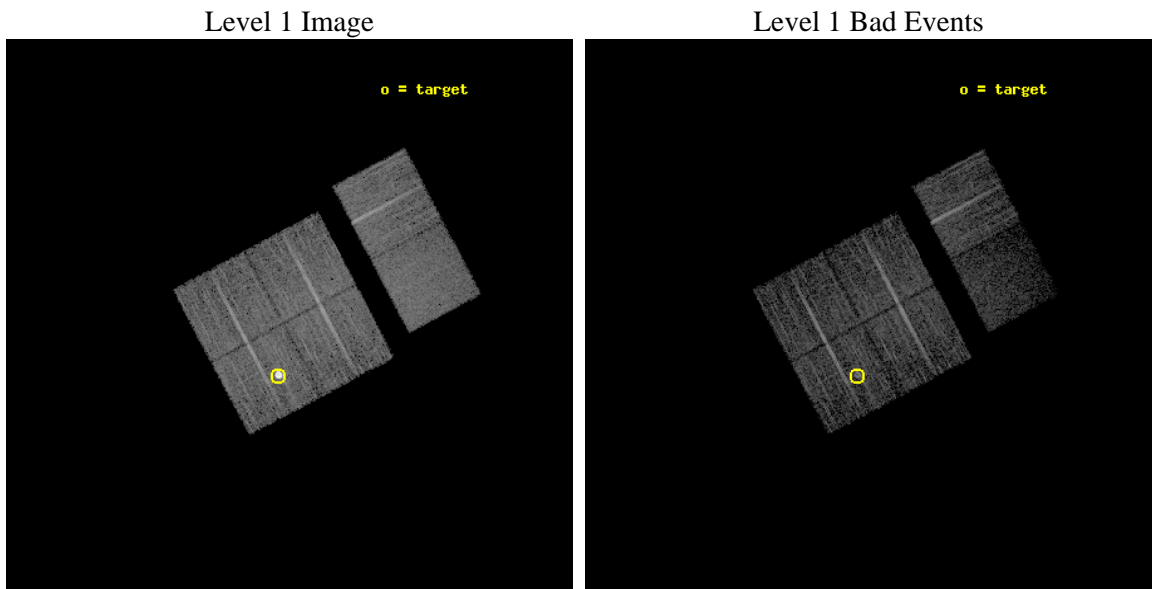
seq_num	590288	Sequence number
obs_id	3533	Observation id
title	AO4B ACIS-I CALIBRATION OBSERVATIONS OF E0102-72	Proposal title
observer	Dr. CXC Calibration	Principal investigator
object	E0102-72[I1,-120,-4.0,-3.68,0]	Source name
dtcycle	0	
cycle	P	events from which exps? Prim/Second/Both
ra_targ	16.01	Observer's specified target RA [deg]
dec_targ	-72.032028	Observer's specified target Dec [deg]
ra_nom	15.948143587064	Nominal RA [deg]
dec_nom	-71.941439976089	Nominal Dec [deg]
roll_nom	62.098754926117	Nominal Roll [deg]
revision	3	Processing version of data
ontime	7756.7999711037	Sum of GTIs [s]
livetime	7658.5786992854	Livetime [s]
ontime0	7756.7999711037	Sum of GTIs [s]
ontime1	7756.7999711037	Sum of GTIs [s]
ontime2	7756.7999711037	Sum of GTIs [s]
ontime3	7756.7999711037	Sum of GTIs [s]
ontime6	7756.7999711037	Sum of GTIs [s]
ontime7	7756.7999711037	Sum of GTIs [s]
l2events	55911	Number of level 2 events



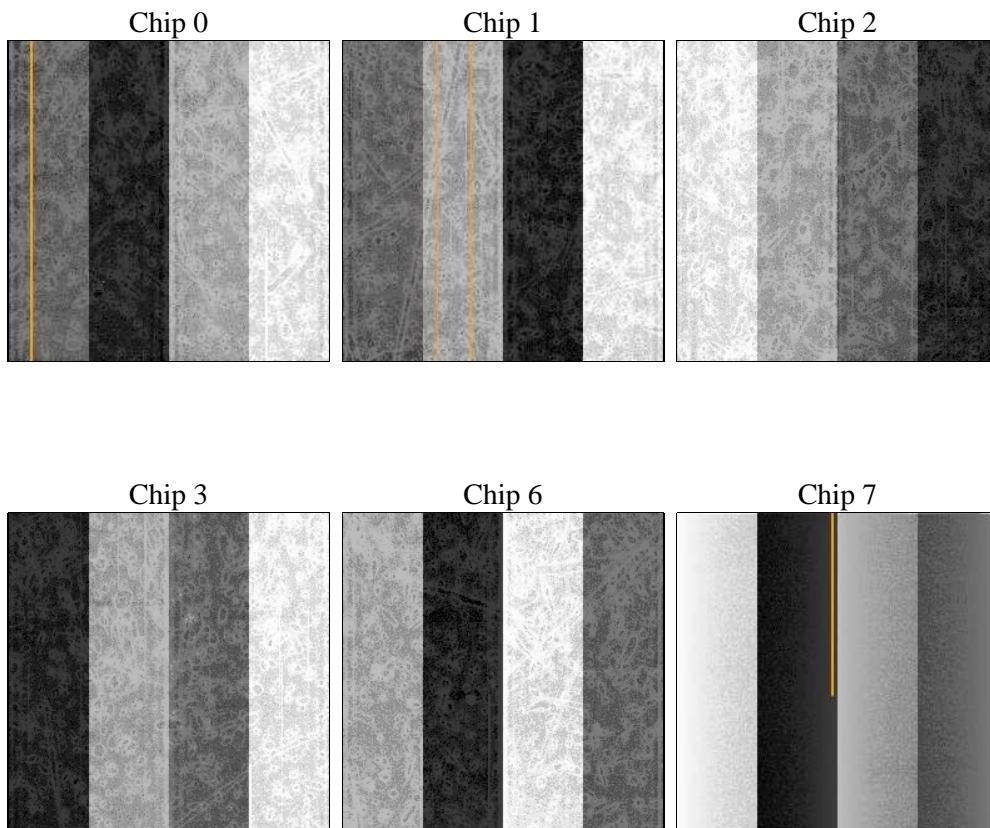
2 OBI

2.1 OBI

2.1.1 Images



2.1.2 Bias



2.1.3 Parameters

obi_num	0	Obi number	sched_exp_time	8000.000000	[s] Scheduled observation exposure time
ascdsver	8.4.5	Processing system revision	ontime	7756.7999711037	Sum of GTIs [s]
caldbver	4.5.2	 	ontime0	7756.7999711037	Sum of GTIs [s]
date	2012-11-03T14:27:38	Date and time of file creation	ontime1	7756.7999711037	Sum of GTIs [s]
revision	3	Processing version of data	ontime2	7756.7999711037	Sum of GTIs [s]
			ontime3	7756.7999711037	Sum of GTIs [s]
			ontime6	7756.7999711037	Sum of GTIs [s]
			ontime7	7756.7999711037	Sum of GTIs [s]
			l1events	243321	Number of level 1 events

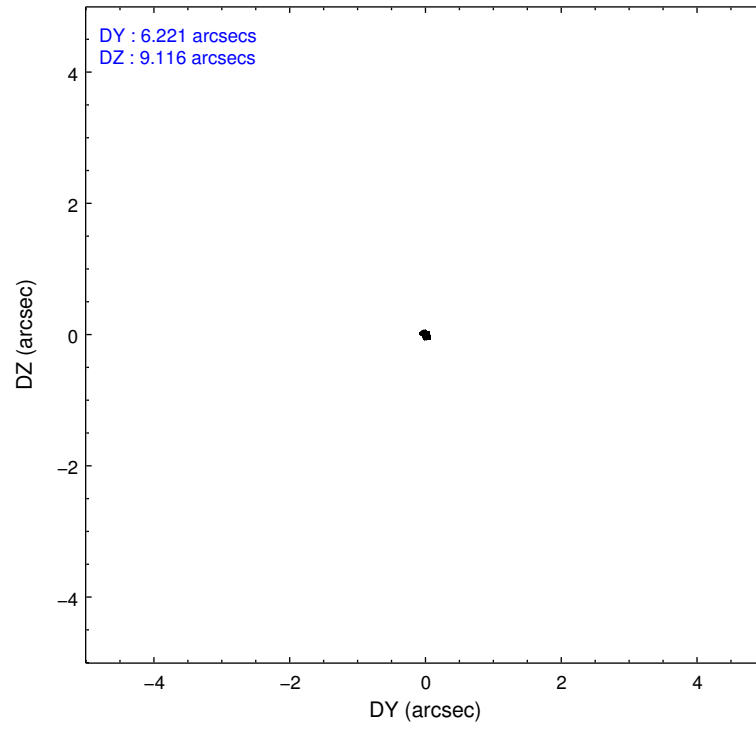
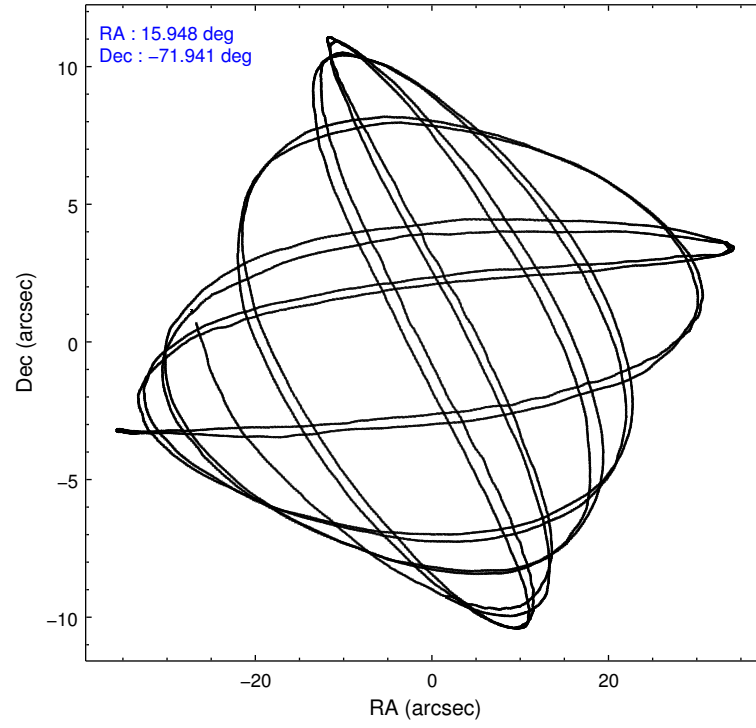
2.1.4 Events

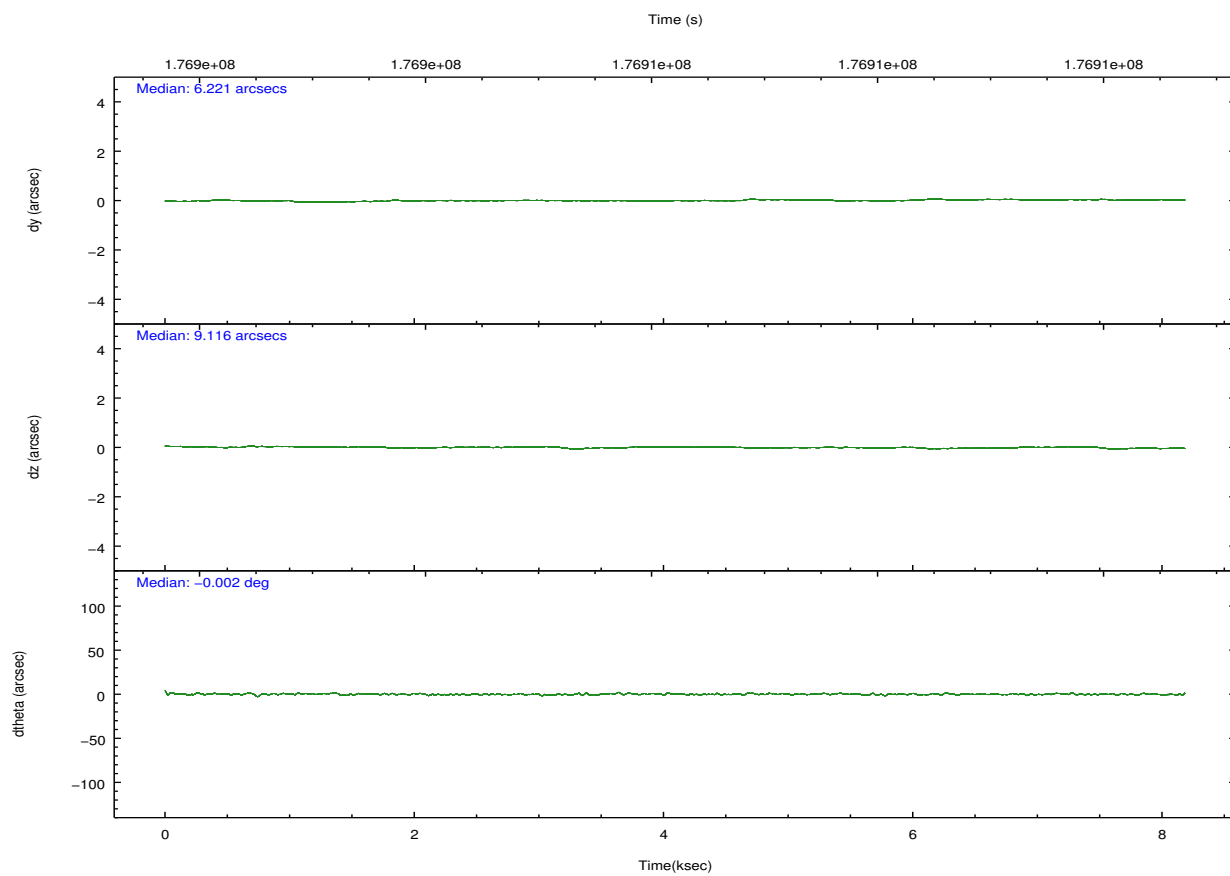
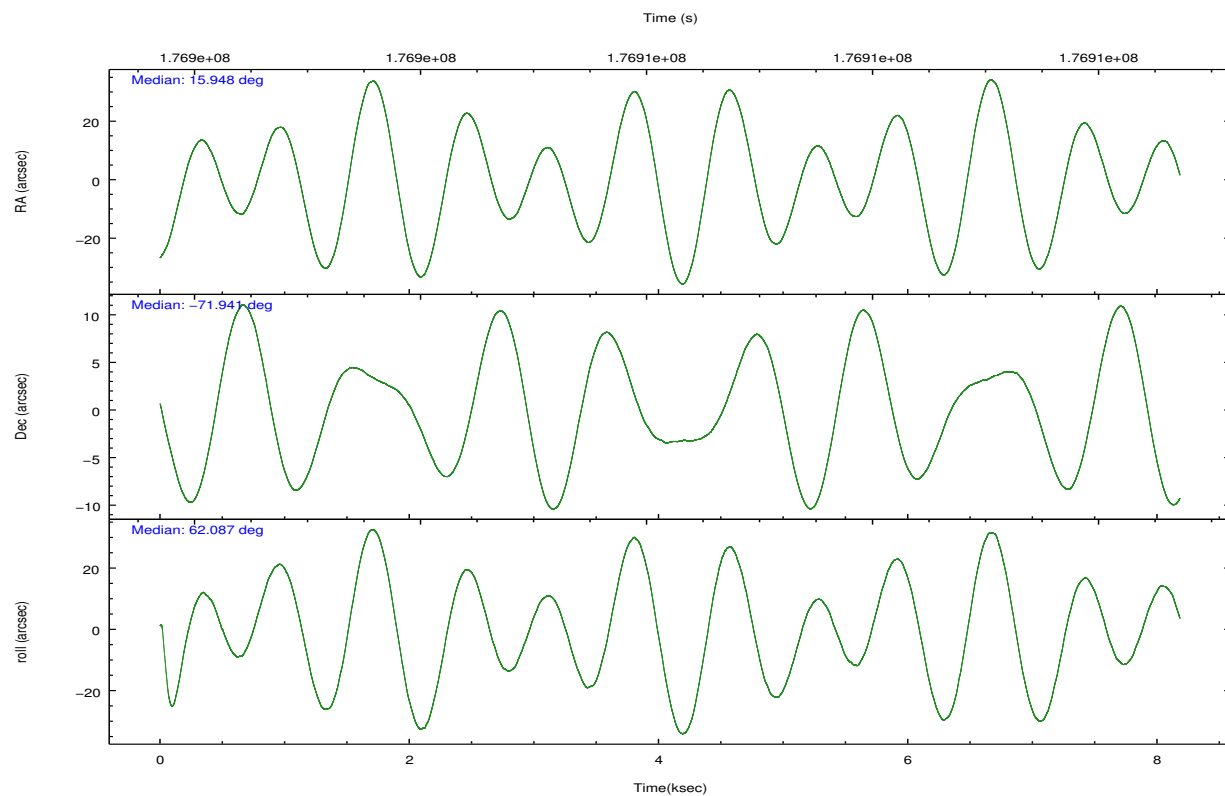
	ccd 0	ccd 1	ccd 2	ccd 3	ccd 6	ccd 7		ccd 0	ccd 1	ccd 2	ccd 3	ccd 6	ccd 7
level 1 events	34281	60188	38097	37136	38294	35325	grade 0 events	1349	23162	1464	1413	1427	1900
rejected events	30551	31922	34359	33477	34316	17717		3%	38%	3%	3%	3%	5%
rejected %	89%	53%	90%	90%	89%	50%	grade 1 events	9	210	22	16	15	27
								0%	0%	0%	0%	0%	0%
							grade 2 events	859	2555	814	764	874	3796
								2%	4%	2%	2%	2%	10%
							grade 3 events	430	821	429	403	449	1825
								1%	1%	1%	1%	1%	5%
							grade 4 events	399	836	391	413	449	1683
								1%	1%	1%	1%	1%	4%
							grade 5 events	1076	1252	1023	1279	1219	3797
								3%	2%	2%	3%	3%	10%
							grade 6 events	695	903	640	667	782	8415
								2%	1%	1%	1%	2%	23%
							grade 7 events	29464	30449	33314	32181	33079	13882
								85%	50%	87%	86%	86%	39%

2.2 Compared Parameters

Parameter	Planned	Actual	Parameter	Planned	Actual
Instrument	ACIS	ACIS	Obspar format version number	7	7
Detector	ACIS-012367	ACIS-012367	Obspar file type	PREDICTED	ACTUAL
Grating	NONE	NONE	Obspar update status	NONE	UPDATED
Data mode	VFAINT	VFAINT	Number of optional ACIS chips dropped	0	0
Observation mode	POINTING	POINTING	On-chip summing requested	N	N
[deg] Pointing RA	15.951689	15.94814358706389	Subarray requested	NONE	NONE
[deg] Pointing Dec	-71.968757	-71.94143997608896	Alternating exposures requested	N	N
[deg] Pointing Roll	61.893440	62.09875492611707	[s] Primary exposure time	0.000000	3.2
[s] Window start time (MET)	174614464.184000	174614464.184000			
[s] Window stop time (MET)	177292864.184000	177292864.184000			
[mm] SIM focus pos	-0.782348	-0.7809083437167272			
[mm] SIM defocus	0	0.001439871863259334			
[mm] SIM translation stage pos	-233.592463	-233.5874344608287			
[mm] SIM translation stage offset	0	-0.005018542100998502			
[s] Observation start time (MET)	176902295.184000	176901919.41345			
Observation start date	2003-08-10T11:30:31	2003-08-10T11:25:19			
[s] Observation end time (MET)	176910295.184000	176910429.98881			
Observation end date	2003-08-10T13:43:51	2003-08-10T13:47:09			
Read mode	TIMED	TIMED			

2.3 Aspect



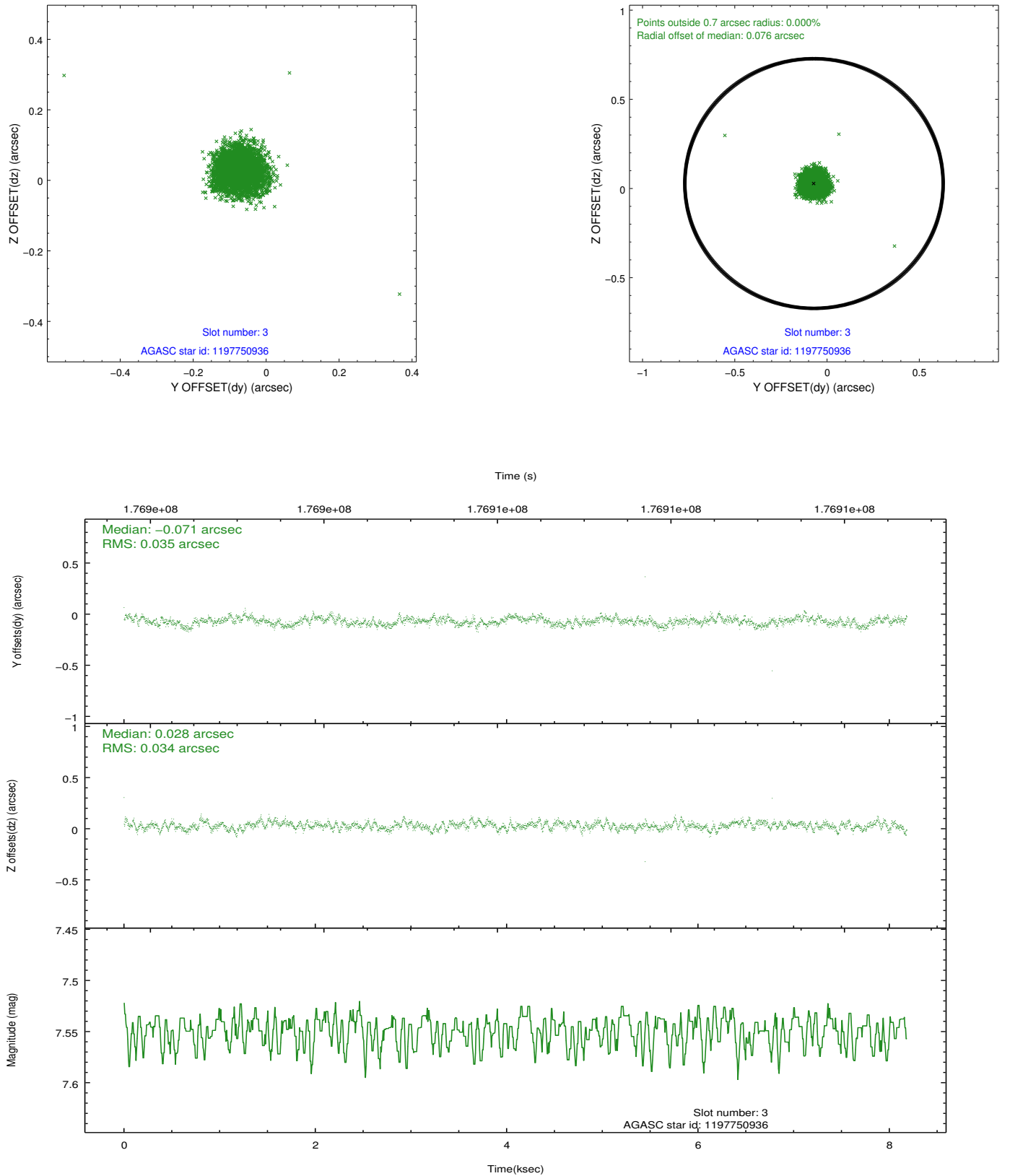


Slot Statistics

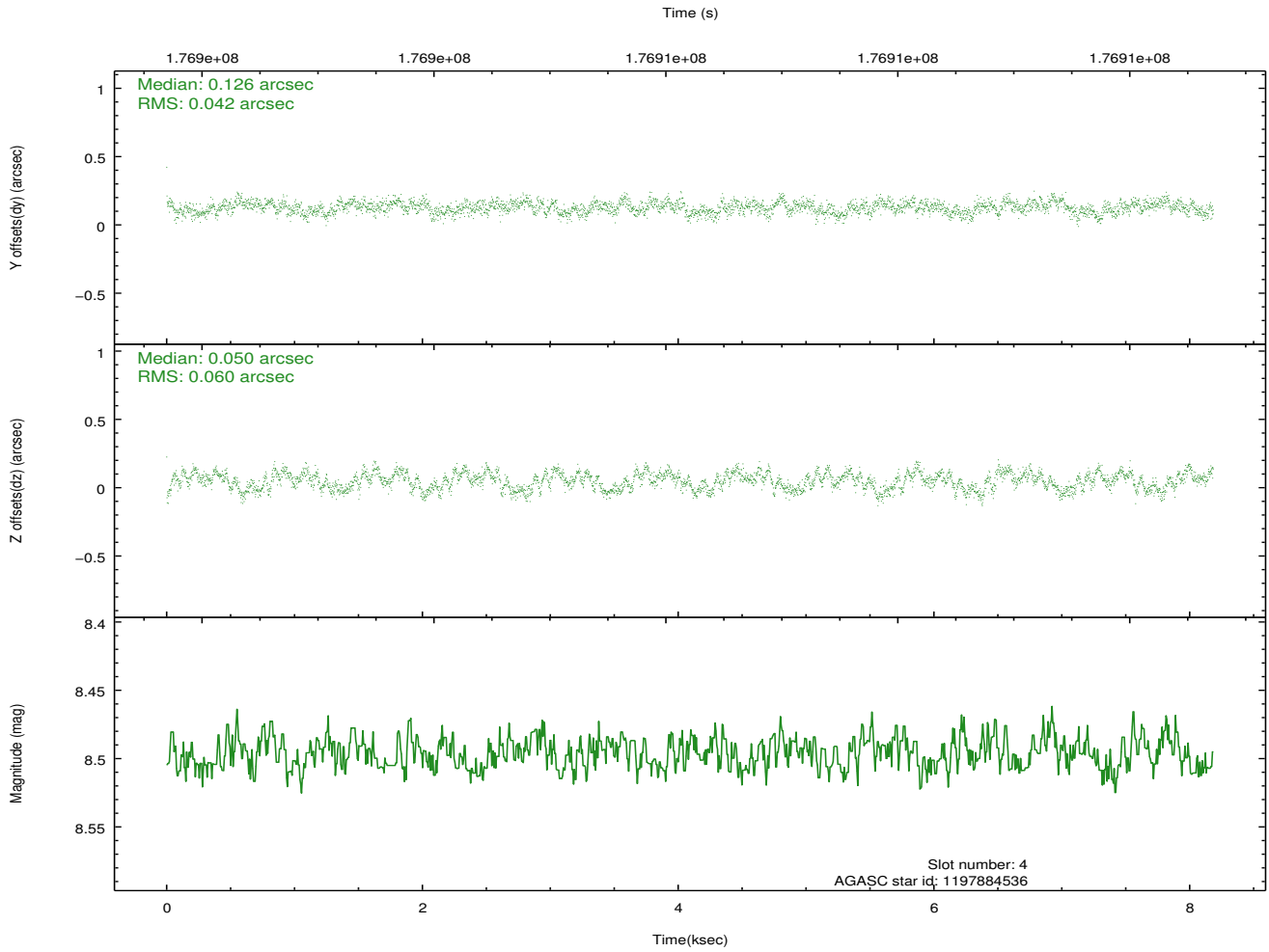
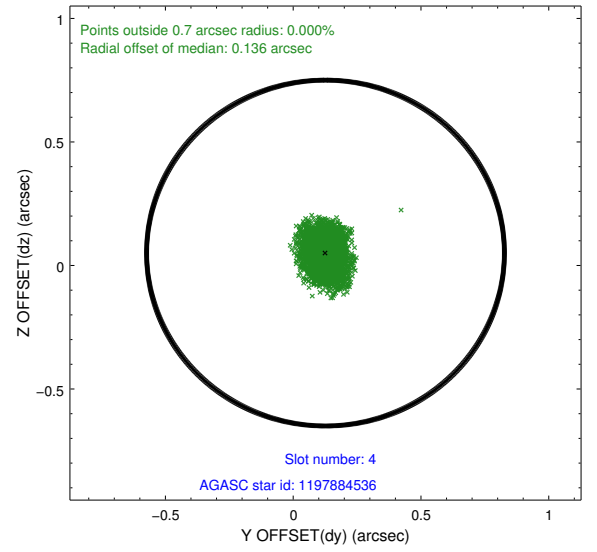
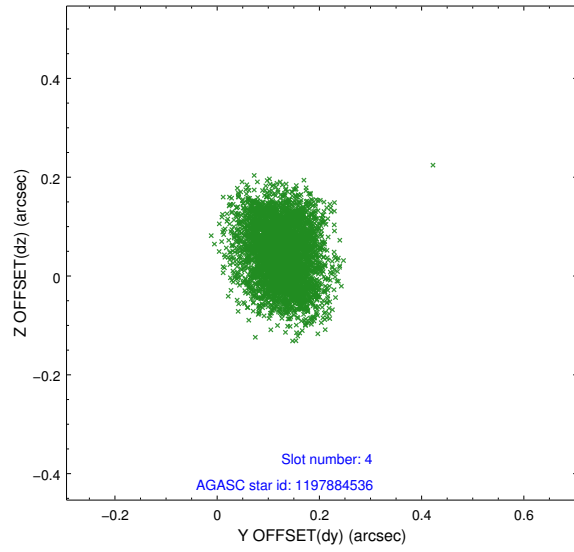
slot	status	id	mag	n_pts	med_dy	med_dz	dr1	dr2	ra	dec	mean_y	mean_z
0	FID	ACIS-I-2	7.13	1994	-0.053	-0.065	0.009	0.016	0.000000	0.000000	-760.75	-838.99
1	FID	ACIS-I-4	7.18	1995	0.105	0.054	0.006	0.010	0.000000	0.000000	2153.16	1066.96
2	FID	ACIS-I-5	7.22	1996	-0.152	0.080	0.009	0.015	0.000000	0.000000	-1813.79	1065.62
3	GUIDE	1197750936	7.55	3993	-0.071	0.028	0.051	0.082	15.387940	-71.549550	1025.89	1276.50
4	GUIDE	1197884536	8.50	3992	0.126	0.050	0.079	0.122	17.160729	-71.835289	1052.00	-976.04
5	GUIDE	1197884712	8.30	3993	0.042	0.029	0.057	0.093	16.087398	-72.252690	-830.81	-613.15
6	GUIDE	1197885104	9.35	3992	-0.072	0.058	0.103	0.168	17.845067	-72.189368	252.89	-2228.09
7	GUIDE	1197885328	7.22	3992	-0.023	-0.161	0.056	0.087	16.283090	-71.733943	921.64	67.39

2.4 Star Slots

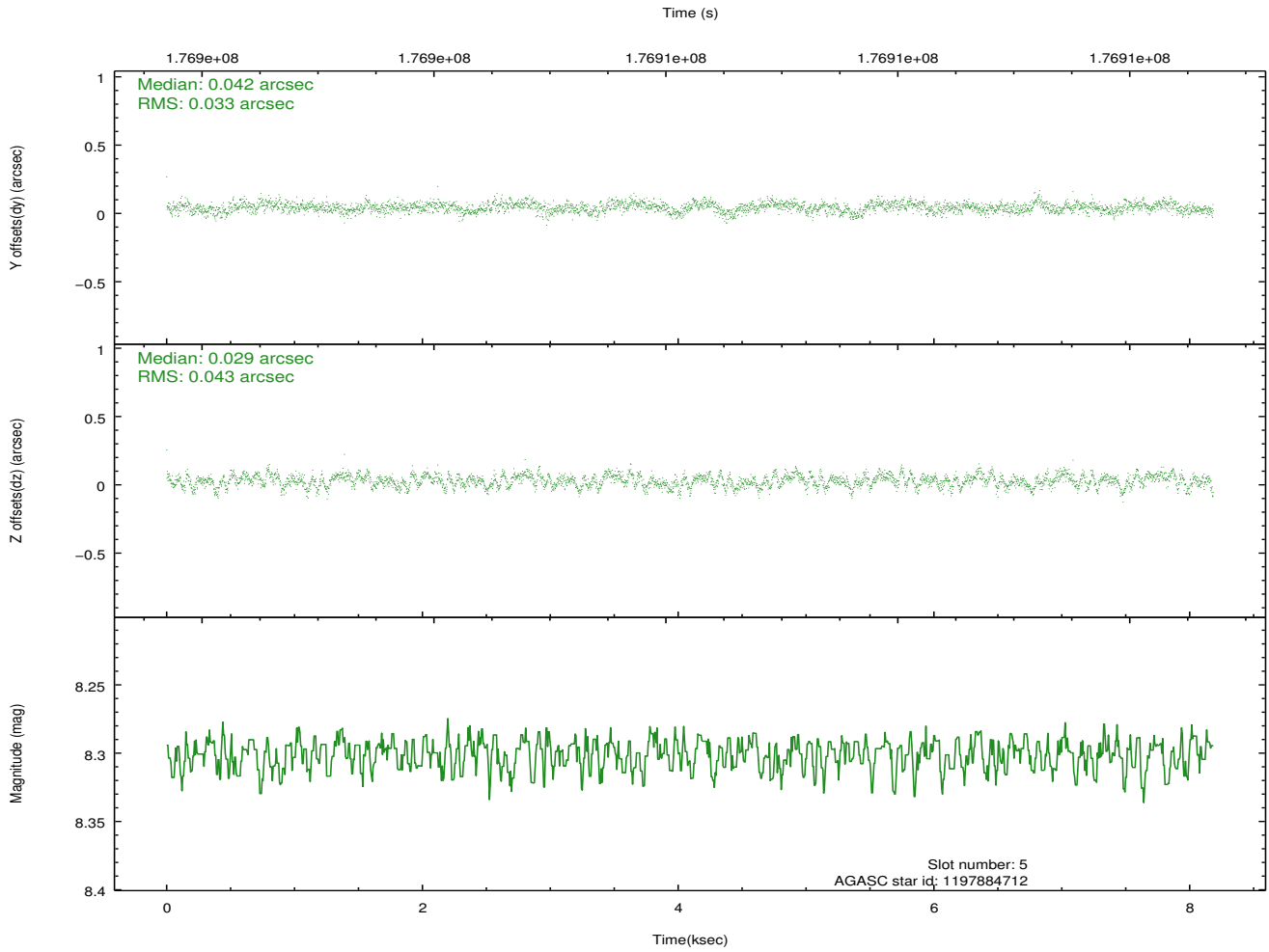
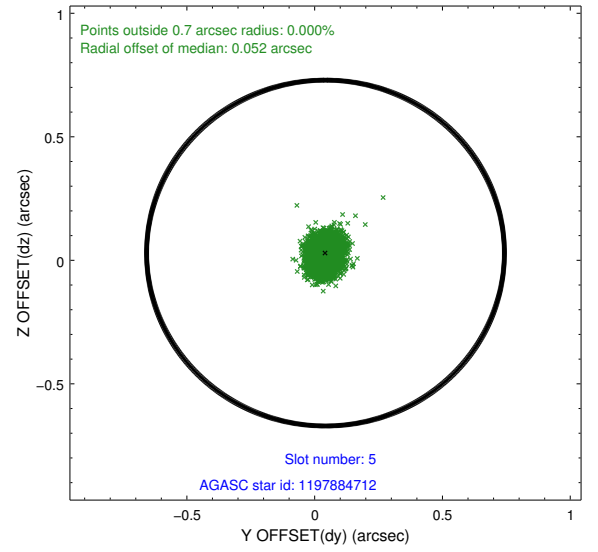
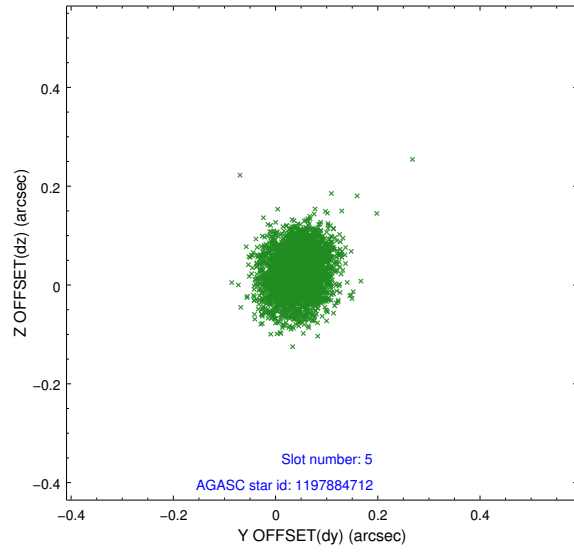
2.4.1 Slot 3



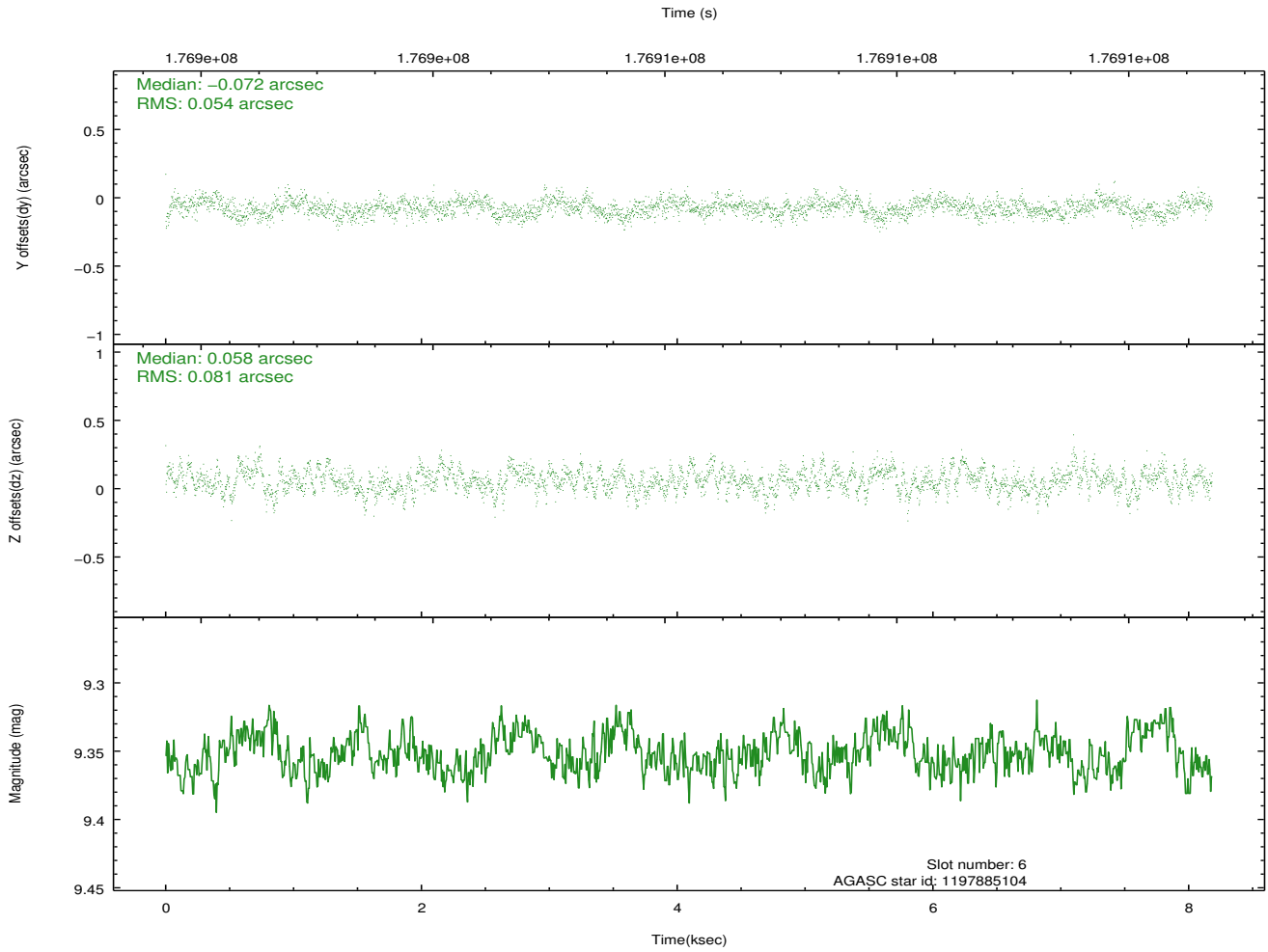
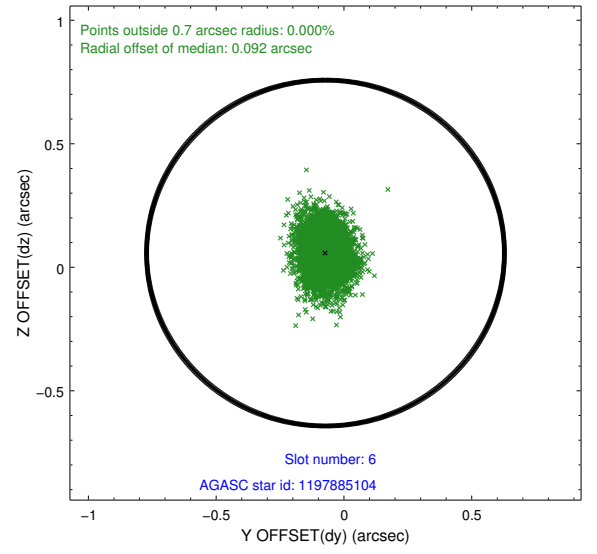
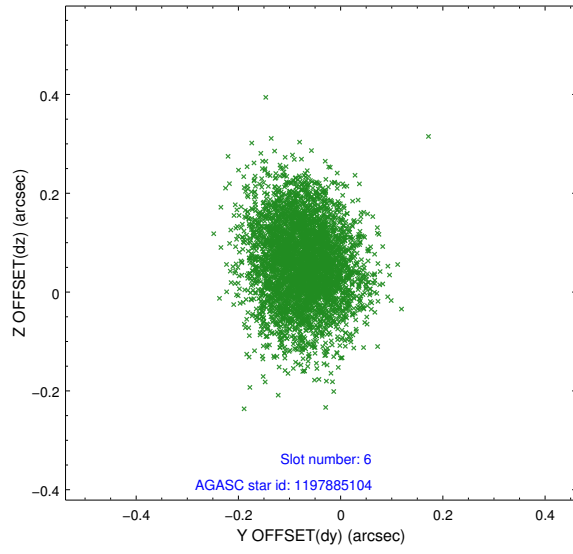
2.4.2 Slot 4



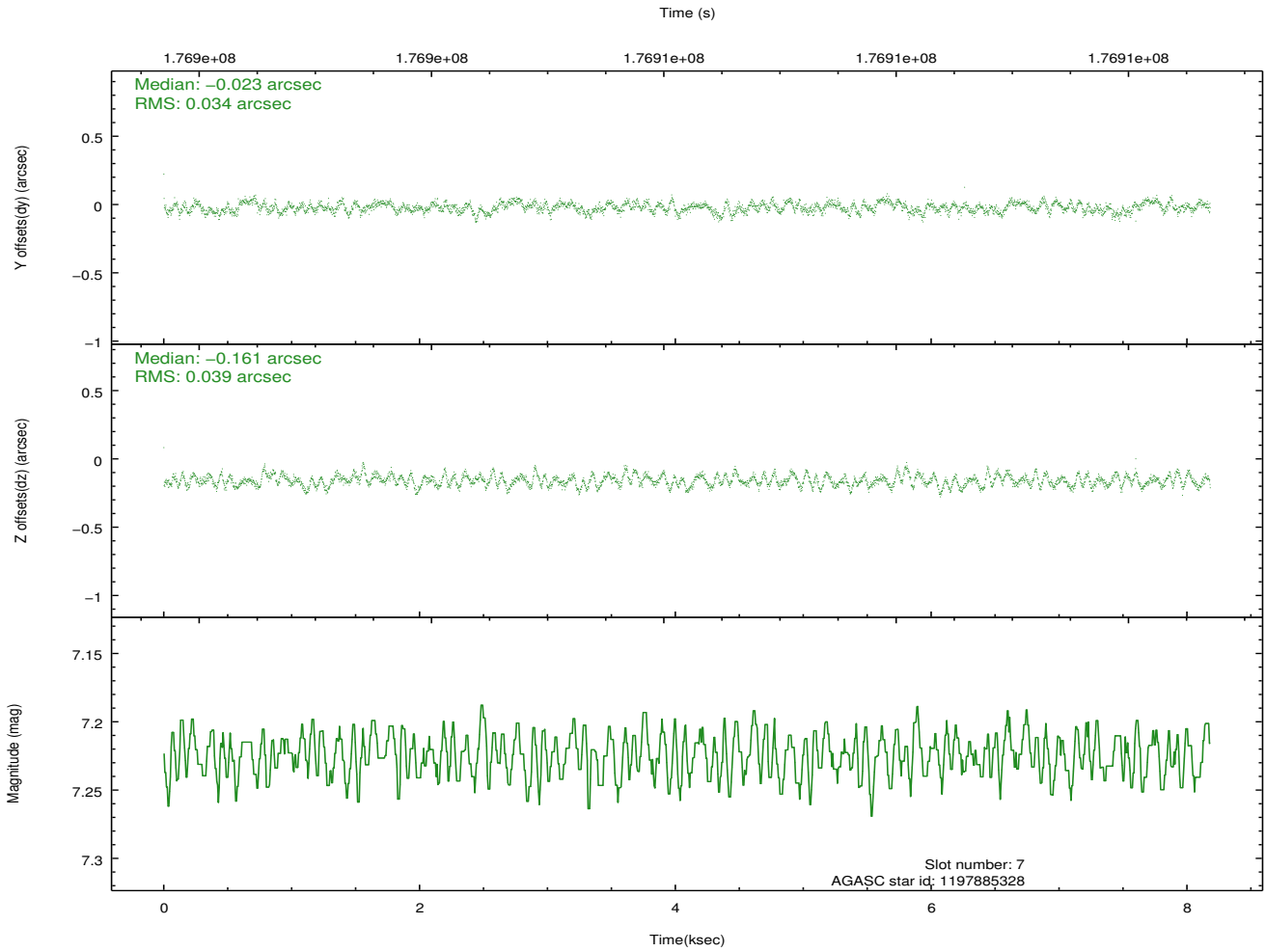
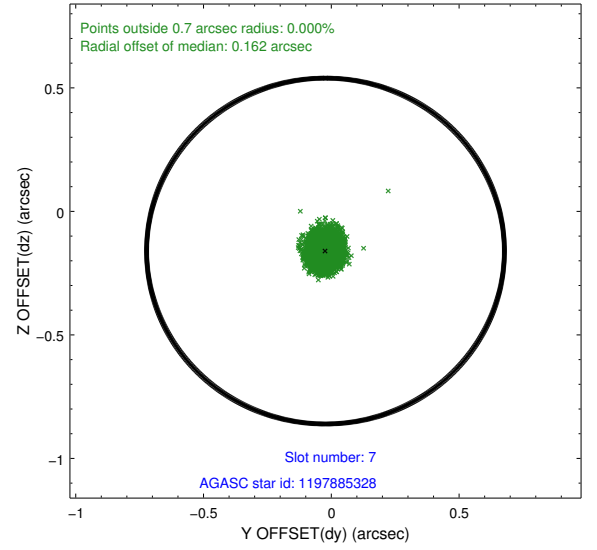
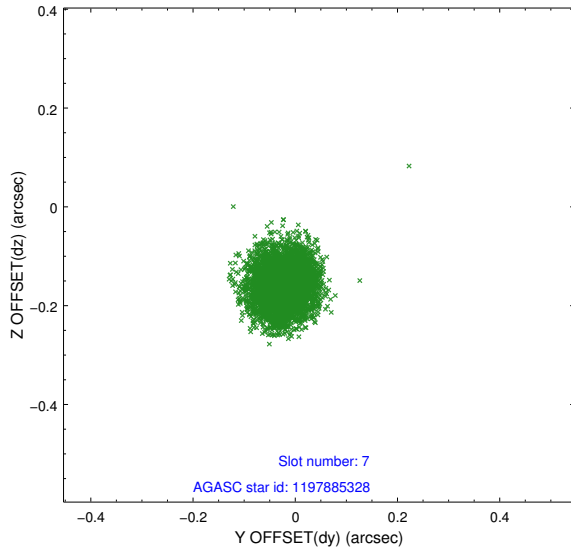
2.4.3 Slot 5



2.4.4 Slot 6

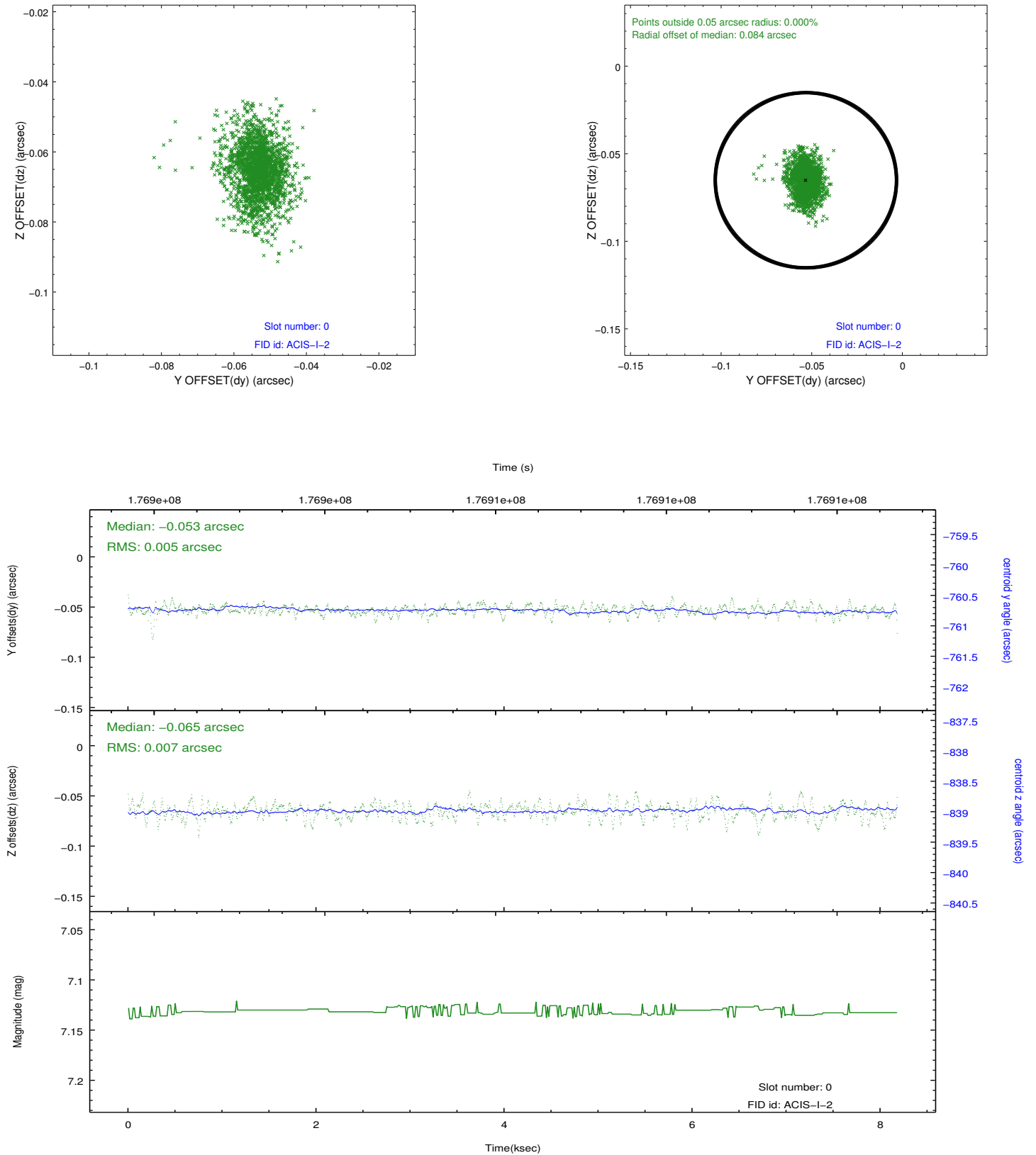


2.4.5 Slot 7

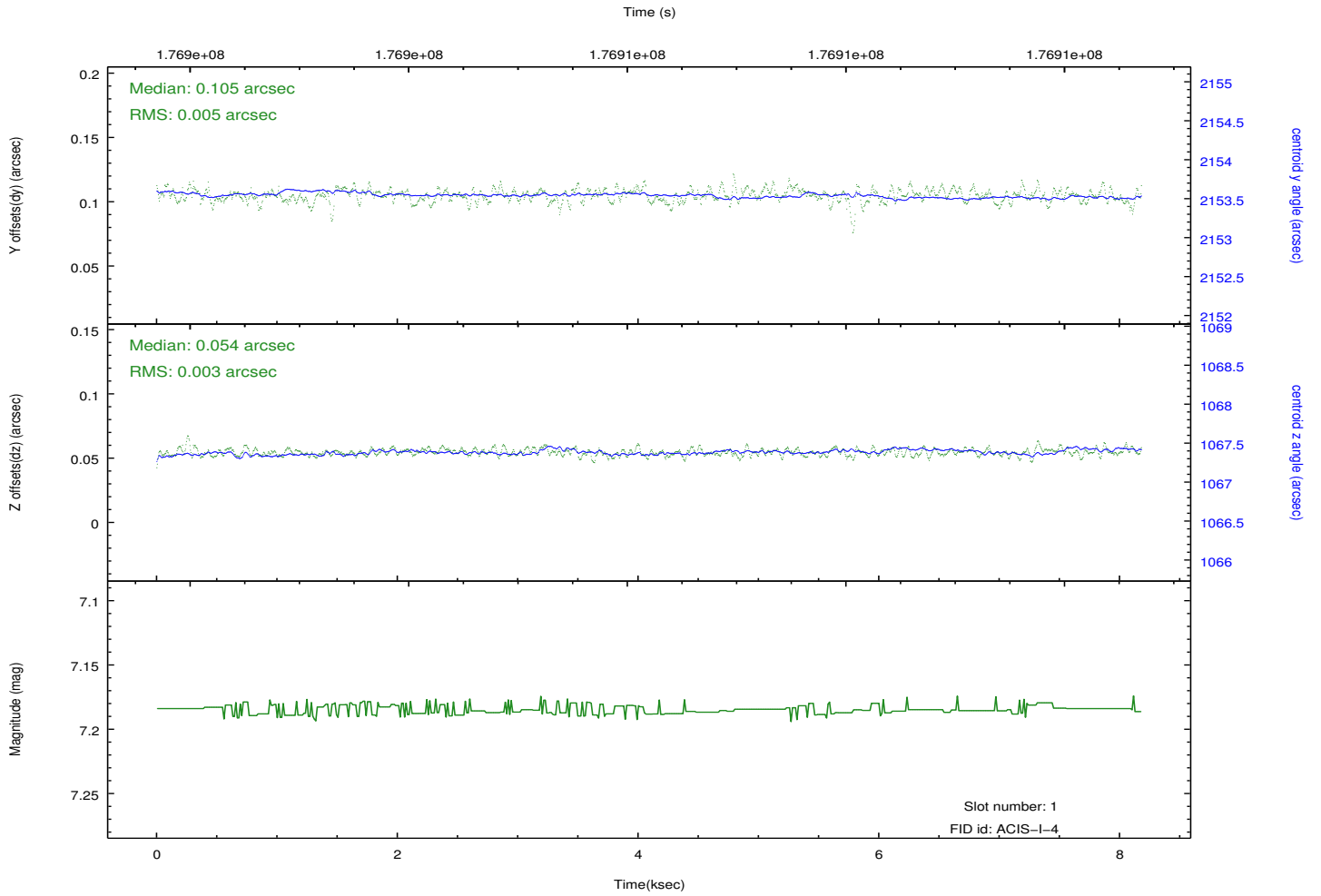
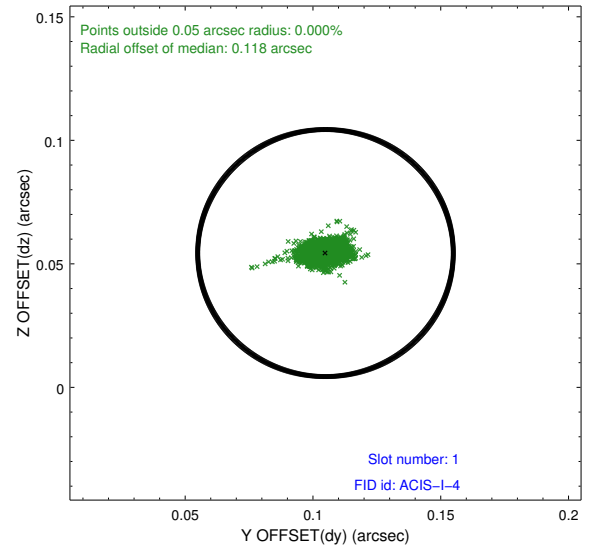
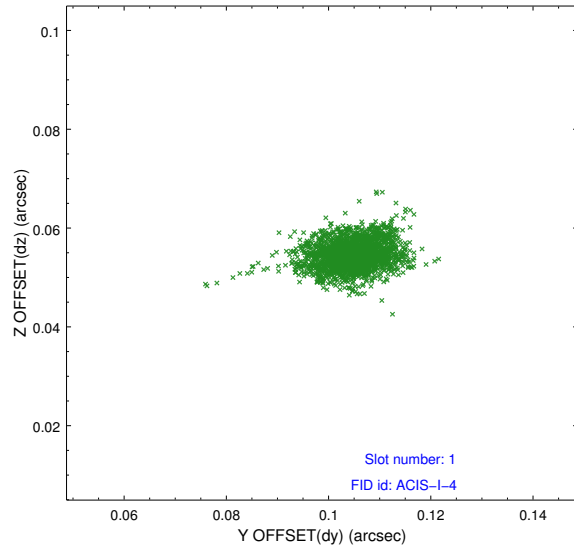


2.5 FID Slots

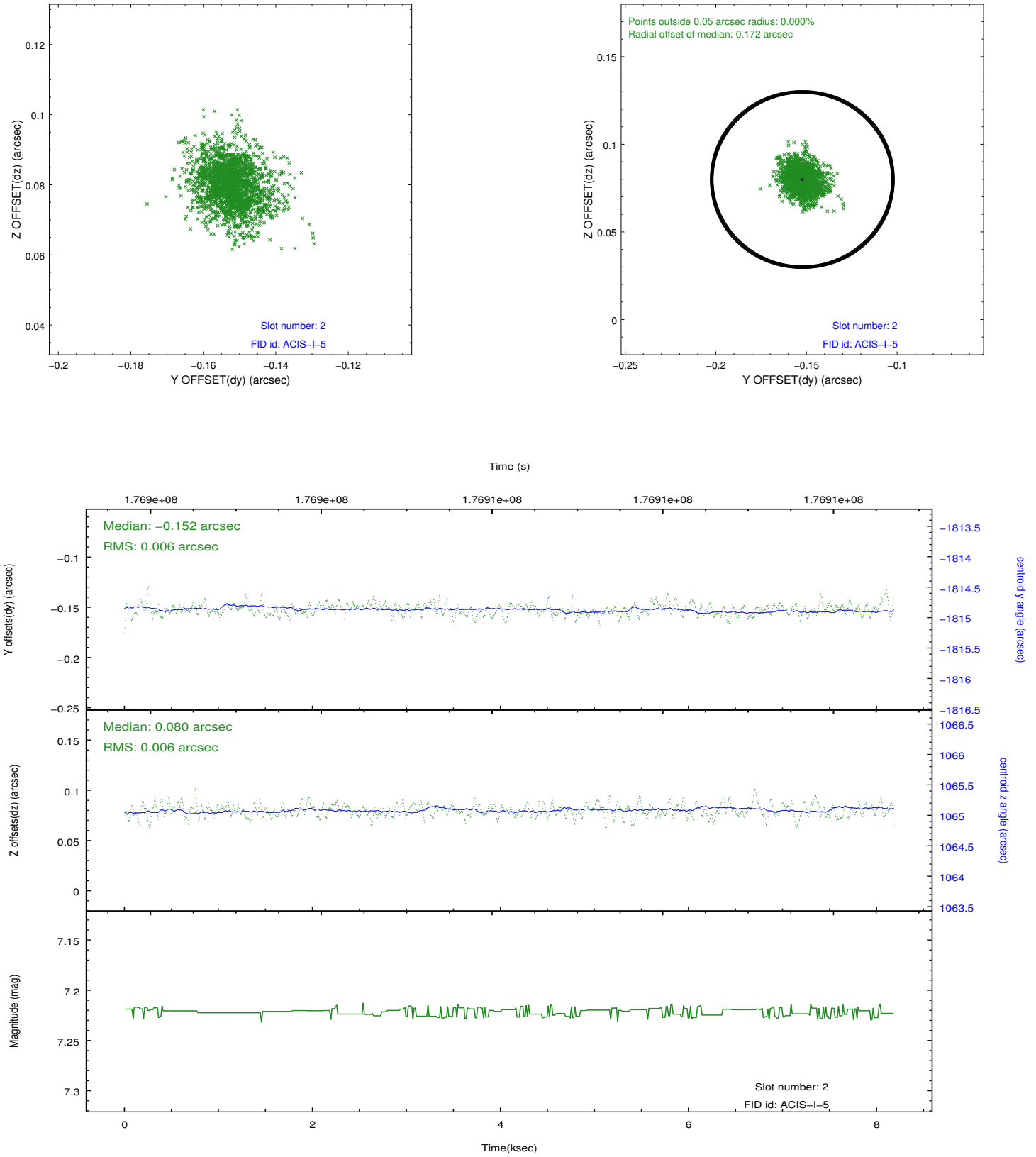
2.5.1 Slot 0



2.5.2 Slot 1



2.5.3 Slot 2



A Summary

A.1 Status

V&V Scientist	Beth Sundheim
V&V Date (YYYY-MM-DD)	2012.11.19
V&V Edition	1
V&V Disposition and Status	OK
V&V Charge Time	7.759

A.2 Comments

Window preference met.