

# V&V Reference Report

## L2 ASCDS Version : 7.6.8

Observation 3532 - L2 Version 001  
Chandra X-Ray Center

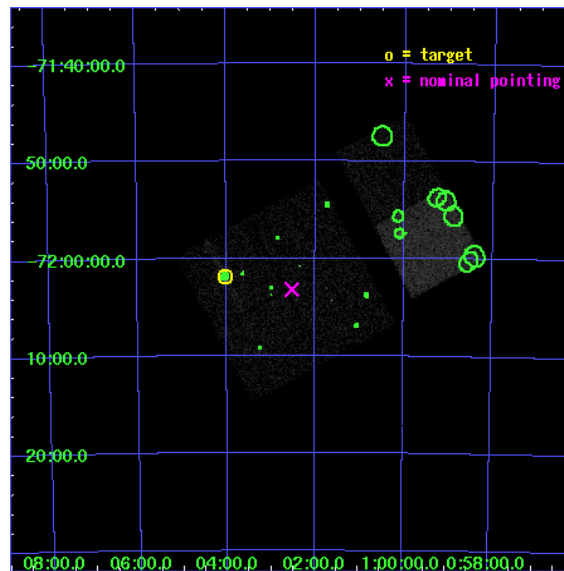
L2 Processing Date : Jul 11 2006

## Contents

<b>1</b>	<b>Front</b>	<b>2</b>
<b>2</b>	<b>OBI</b>	<b>3</b>
2.1	OBI . . . . .	3
2.1.1	Images . . . . .	3
2.1.2	Bias . . . . .	3
2.1.3	Parameters . . . . .	4
2.1.4	Events . . . . .	4
2.2	Compared Parameters . . . . .	5
2.3	Aspect . . . . .	6
2.4	Star Slots . . . . .	9
2.4.1	Slot 3 . . . . .	9
2.4.2	Slot 4 . . . . .	10
2.4.3	Slot 5 . . . . .	11
2.4.4	Slot 6 . . . . .	12
2.4.5	Slot 7 . . . . .	13
2.5	FID Slots . . . . .	14
2.5.1	Slot 0 . . . . .	14
2.5.2	Slot 1 . . . . .	15
2.5.3	Slot 2 . . . . .	16
<b>3</b>	<b>Point Sources</b>	<b>17</b>
<b>A</b>	<b>Summary</b>	<b>18</b>
A.1	Status . . . . .	18
A.2	Comments . . . . .	18

# 1 Front

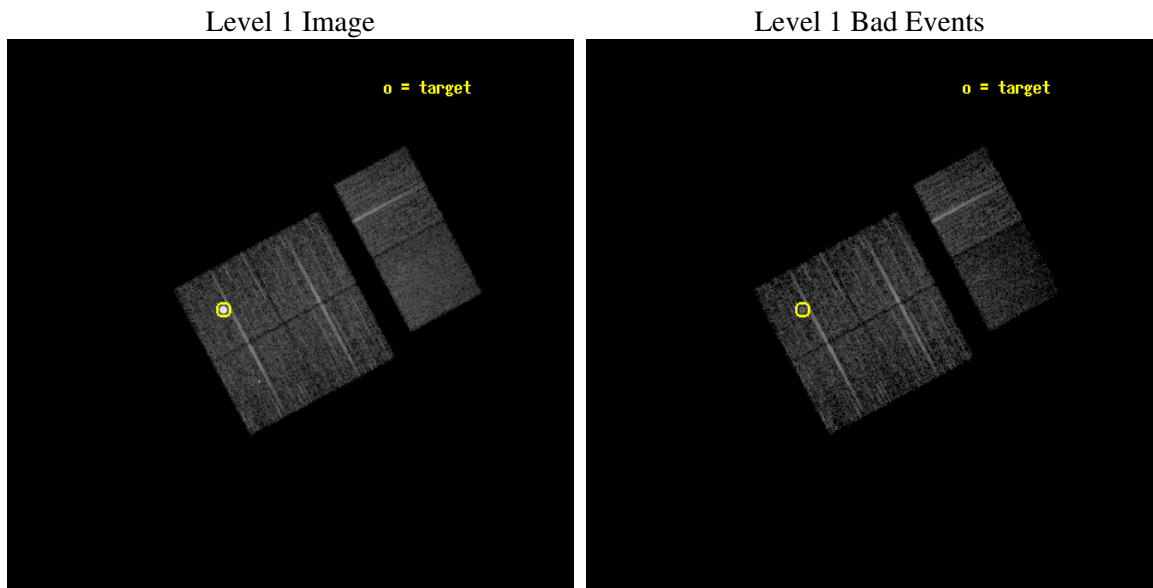
seq_num	590287
obs_id	3532
title	AO4B ACIS-I CALIBRATION OBSERVATIONS OF E0102-72
observer	Dr. CXC Calibration
object	E0102-72[I0,-120,4.7,-5.68,0]
dtcycle	0
cycle	P
ra_targ	16.01
dec_targ	-72.032028
ra_nom	15.631089869863
dec_nom	-72.053395194203
roll_nom	61.830500233521
revision	2
ontime	7750.3590008616
livetime	7652.2192884868
ontime0	7750.3590008616
ontime1	7753.5999711156
ontime2	7753.5999711156
ontime3	7750.3590207696
ontime6	7753.5999711156
ontime7	7753.5999711156
l2events	55183



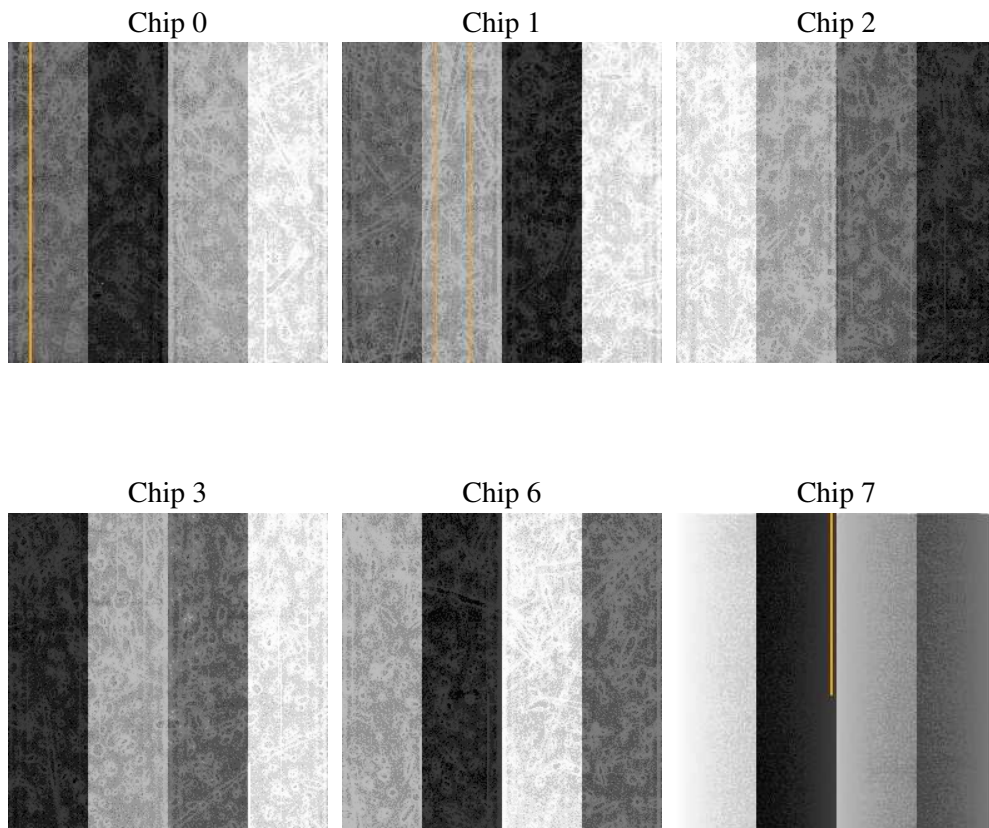
## 2 OBI

### 2.1 OBI

#### 2.1.1 Images



#### 2.1.2 Bias



### 2.1.3 Parameters

obi_num	0
ascdsver	7.6.8
caldsver	3.2.2
date	2006-07-11T02:59:28
revision	2

sched_exp_time	8000.000000
ontime	7755.7235012054
ontime0	7755.7235012054
ontime1	7758.9644714594
ontime2	7758.9644714594
ontime3	7755.7235409915
ontime6	7758.9644913375
ontime7	7758.9645013511
l1events	245192

### 2.1.4 Events

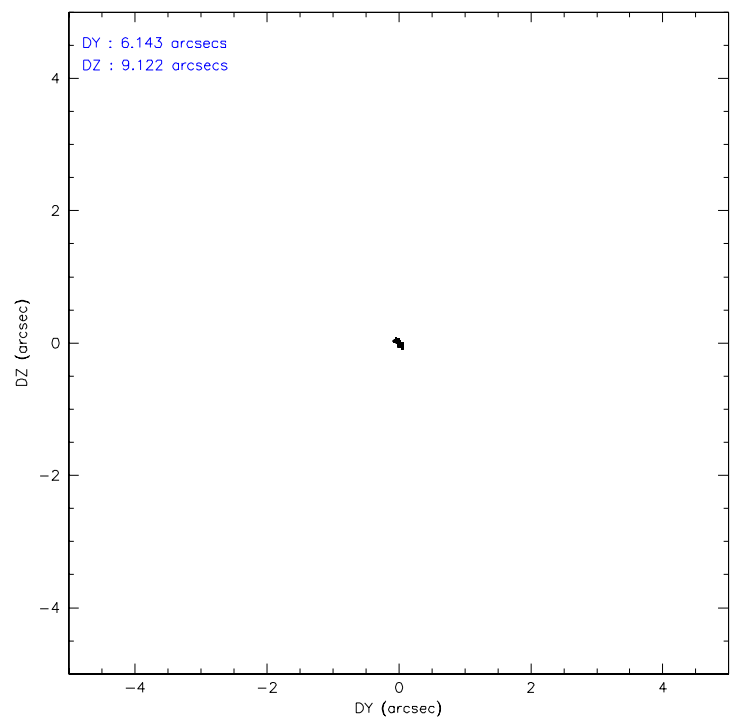
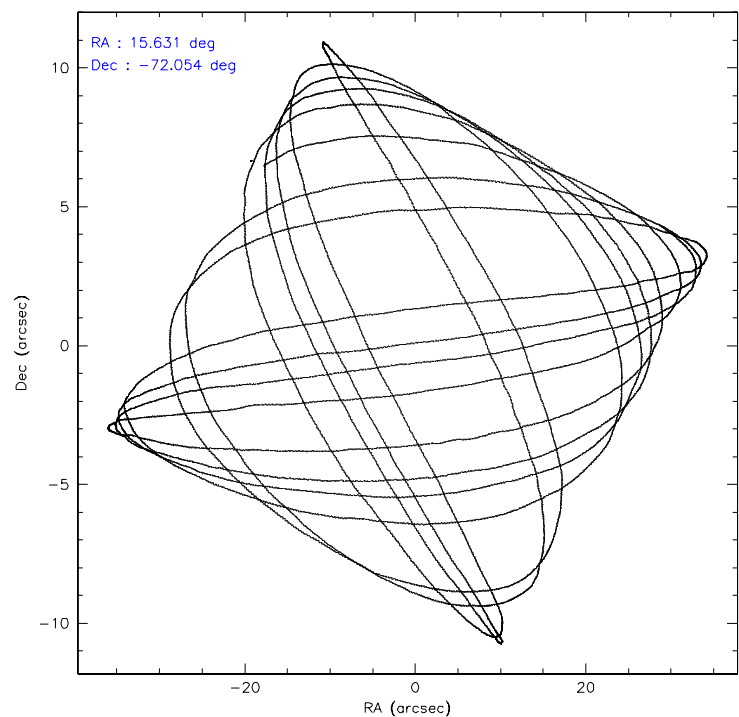
	ccd 0	ccd 1	ccd 2	ccd 3	ccd 6	ccd 7
level 1 events	58625	35463	39072	36926	39443	35663
rejected events	32093	31063	35279	33077	35532	19106
rejected %	54%	87%	90%	89%	90%	53%

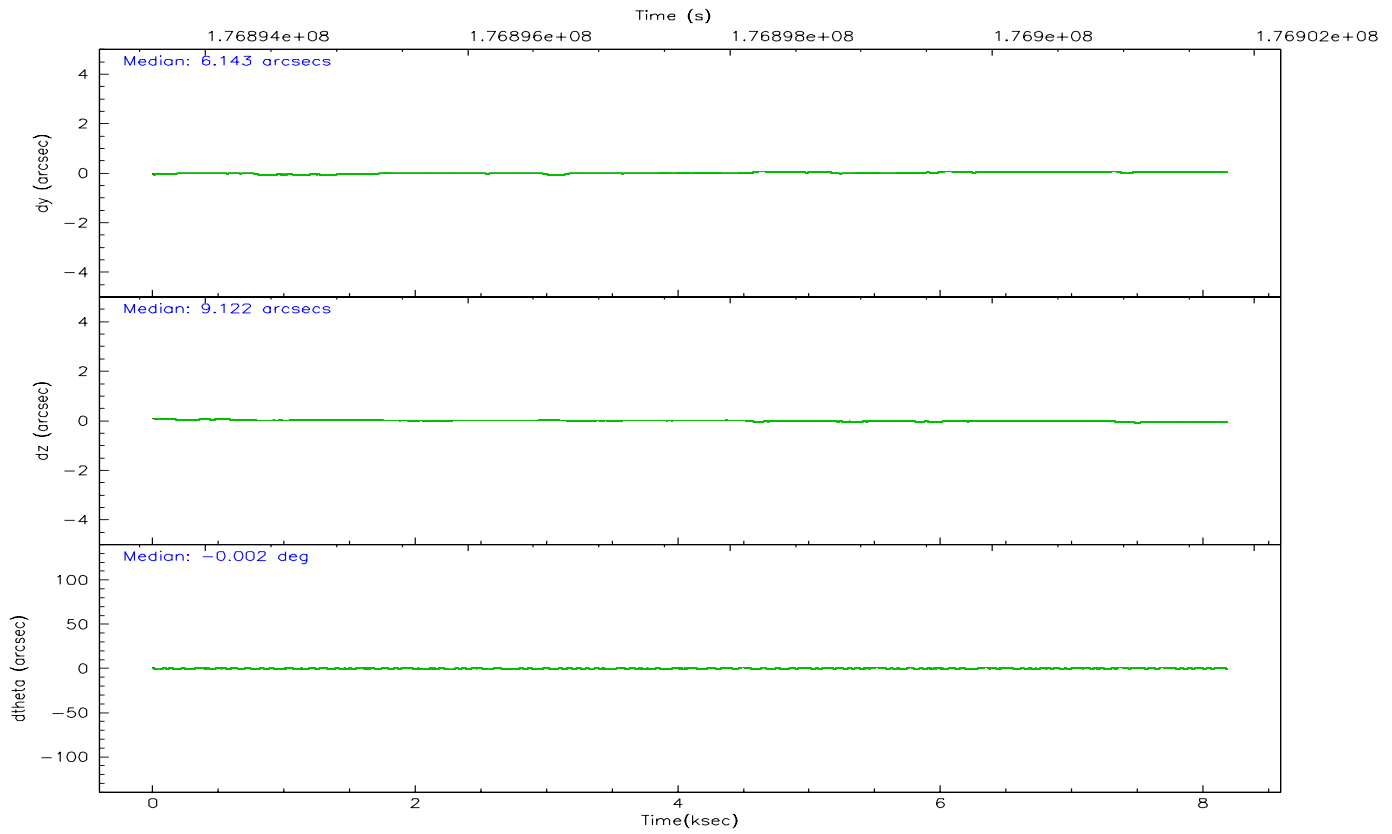
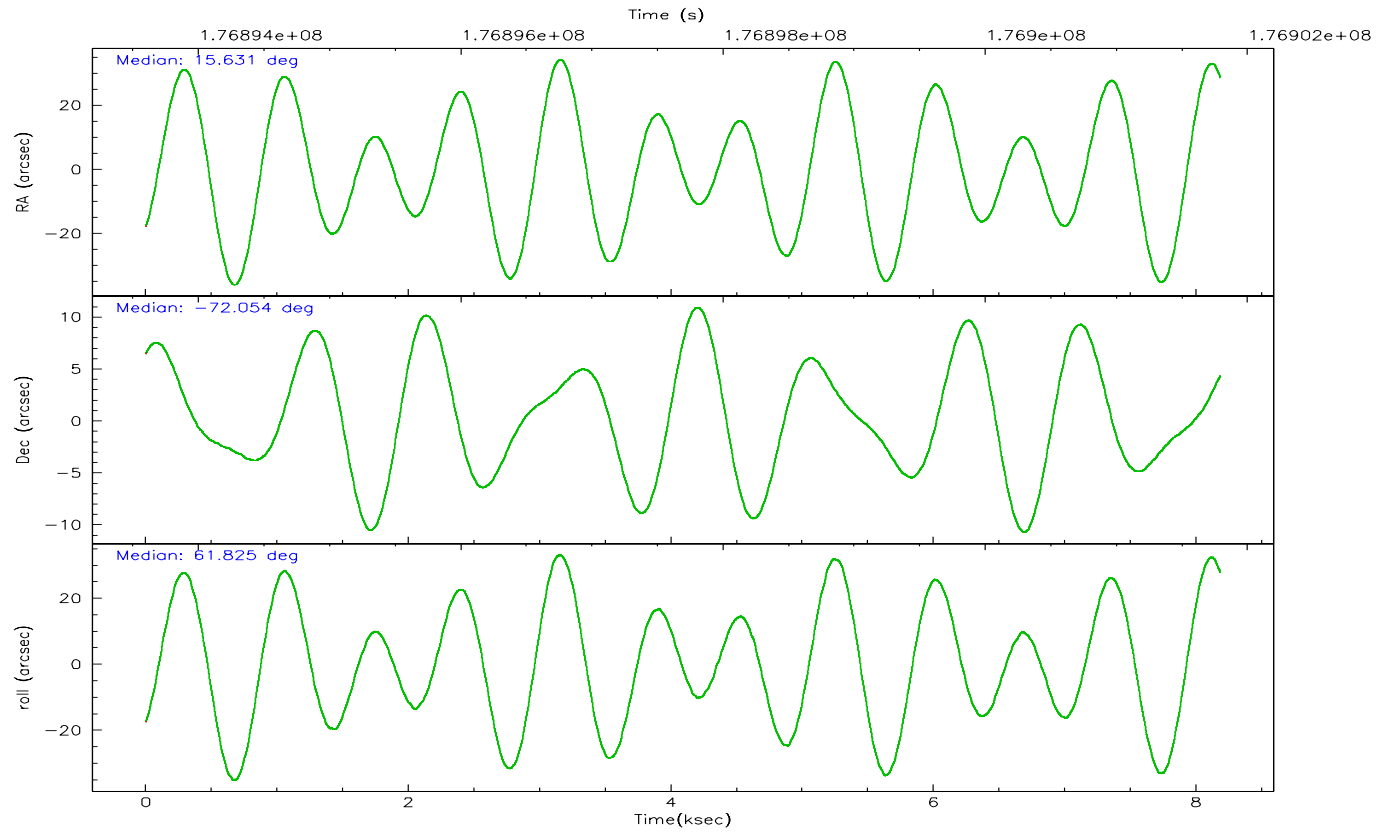
	ccd 0	ccd 1	ccd 2	ccd 3	ccd 6	ccd 7
grade 0 events	21639	1825	1578	1679	1477	1248
	36%	5%	4%	4%	3%	3%
grade 1 events	189	20	23	21	19	18
	0%	0%	0%	0%	0%	0%
grade 2 events	2478	917	825	717	833	4177
	4%	2%	2%	1%	2%	11%
grade 3 events	844	497	411	392	413	1070
	1%	1%	1%	1%	1%	3%
grade 4 events	803	432	389	418	393	1042
	1%	1%	0%	1%	0%	2%
grade 5 events	1195	1164	1059	1205	1246	2769
	2%	3%	2%	3%	3%	7%
grade 6 events	792	733	593	649	797	9036
	1%	2%	1%	1%	2%	25%
grade 7 events	30685	29875	34194	31845	34265	16303
	52%	84%	87%	86%	86%	45%

## 2.2 Compared Parameters

Parameter	Planned	Actual	Parameter	Planned	Actual
Instrument	ACIS	ACIS	Obspar format version number	6	6
Detector	ACIS-012367	ACIS-012367	Obspar file type	PREDICTED	ACTUAL
Grating	NONE	NONE	Obspar update status	NONE	UPDATED
Data mode	VFAINT	VFAINT	On-chip summing requested	N	N
Observation mode	POINTING	POINTING	Subarray requested	NONE	NONE
Pointing RA	15.634227	15.63108986986265	Alternating exposures requested	N	N
Pointing Dec	-72.080779	-72.05339519420284	Primary exposure time	0.000000	3.2
Pointing Roll	61.624797	61.83050023352128			
Window start time	174614464.184000	174614464.184000			
Window stop time	177292864.184000	177292864.184000			
SIM focus pos (mm)	-0.782348	-0.7809083437167272			
SIM defocus (mm)	0	0.001439871863259334			
SIM translation stage pos (mm)	-233.592463	-233.5874344608287			
SIM translation stage offset (mm)	0	-0.005018542100998502			
Observation start time	176893785.184000	176893409.86308			
Observation start date	2003-08-10T09:08:41	2003-08-10T09:03:29			
Observation end time	176901785.184000	176901919.41345			
Observation end date	2003-08-10T11:22:01	2003-08-10T11:25:19			
Read mode	TIMED	TIMED			

## 2.3 Aspect





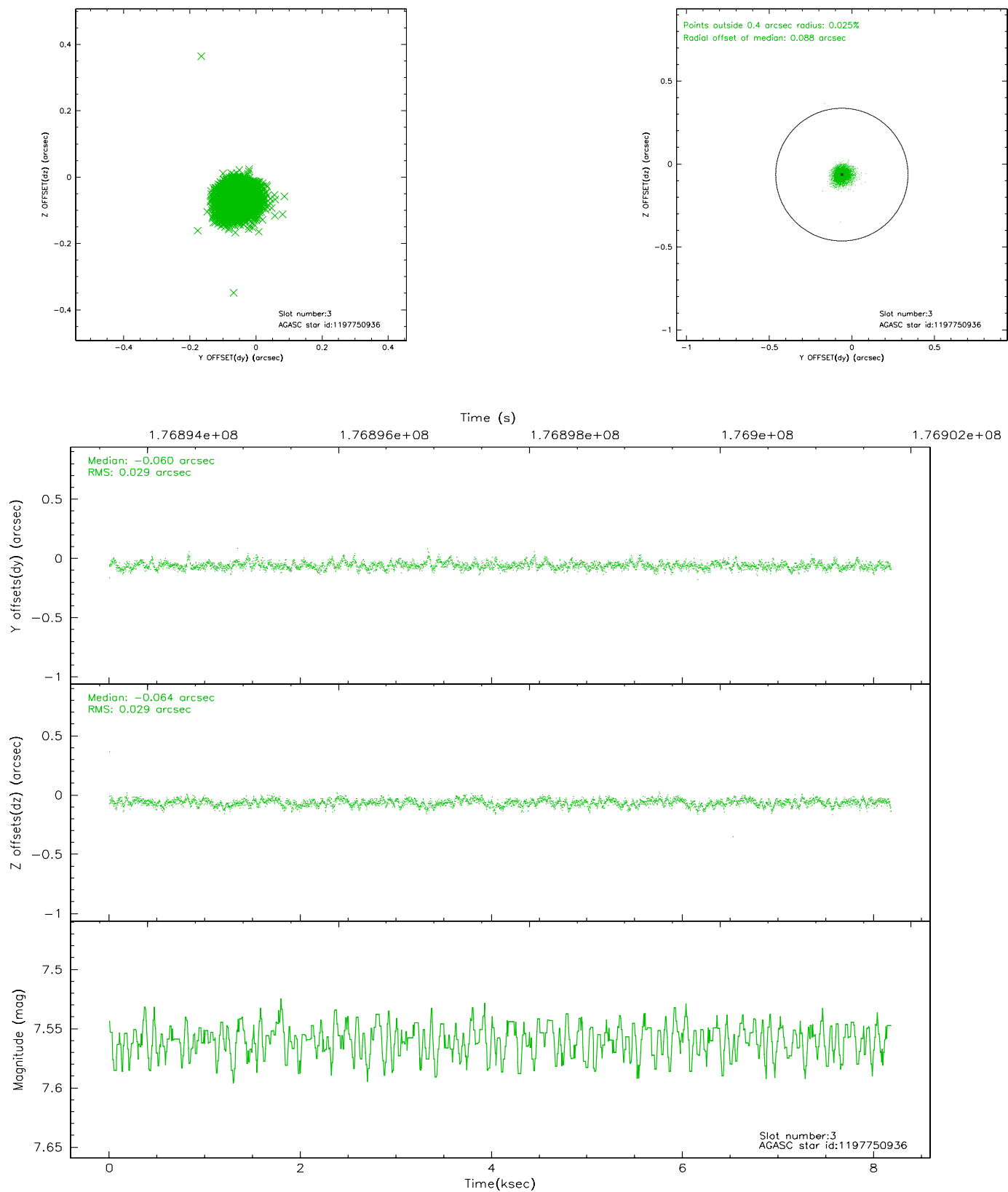
### Slot Statistics

slot	status	id	mag	n_pts	med_dy	med_dz	dr1	dr2	ra	dec	mean_y	mean_z
0	FID	ACIS-I-1	7.24	1997	-0.018	0.067	0.006	0.009	0.000000	0.000000	933.54	-832.50
1	FID	ACIS-I-5	7.23	1997	-0.110	0.026	0.006	0.009	0.000000	0.000000	-1814.28	1064.60
2	FID	ACIS-I-6	7.25	1996	0.037	-0.022	0.007	0.011	0.000000	0.000000	398.39	1709.84
3	GUIDE	1197750936	7.56	3993	-0.060	-0.064	0.042	0.071	15.387940	-71.549550	1548.65	1155.66
4	GUIDE	1197884536	8.51	3992	0.066	0.049	0.065	0.104	17.160729	-71.835289	1573.28	-1096.87
5	GUIDE	1197884712	8.31	3992	0.061	-0.058	0.059	0.095	16.087398	-72.252690	-309.21	-732.75
6	GUIDE	1197885104	9.36	3992	-0.061	0.048	0.093	0.146	17.845067	-72.189368	773.38	-2348.38
7	GUIDE	1198189696	7.34	3991	-0.005	0.028	0.055	0.084	15.223750	-72.697522	-2163.35	-669.88

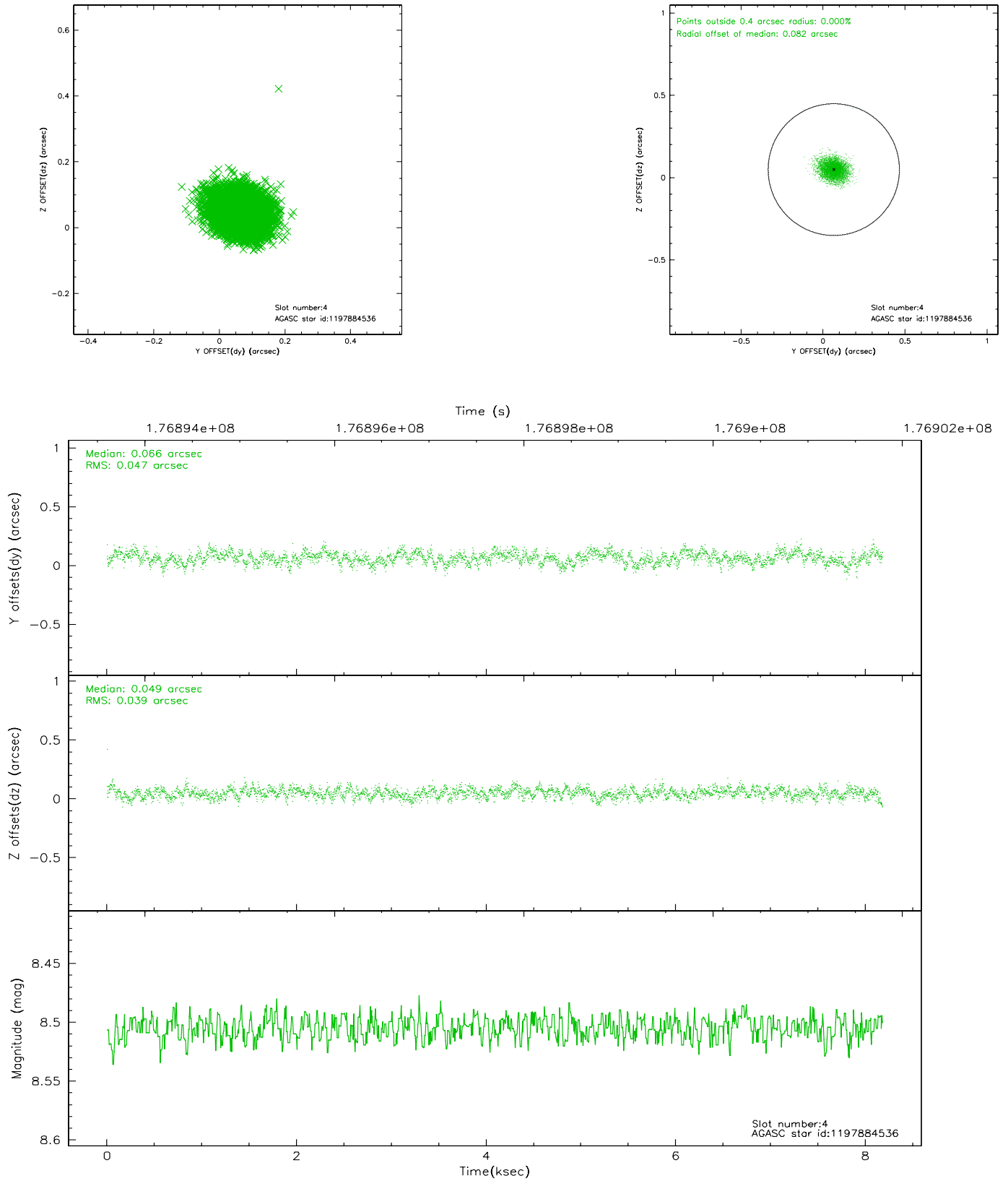


## 2.4 Star Slots

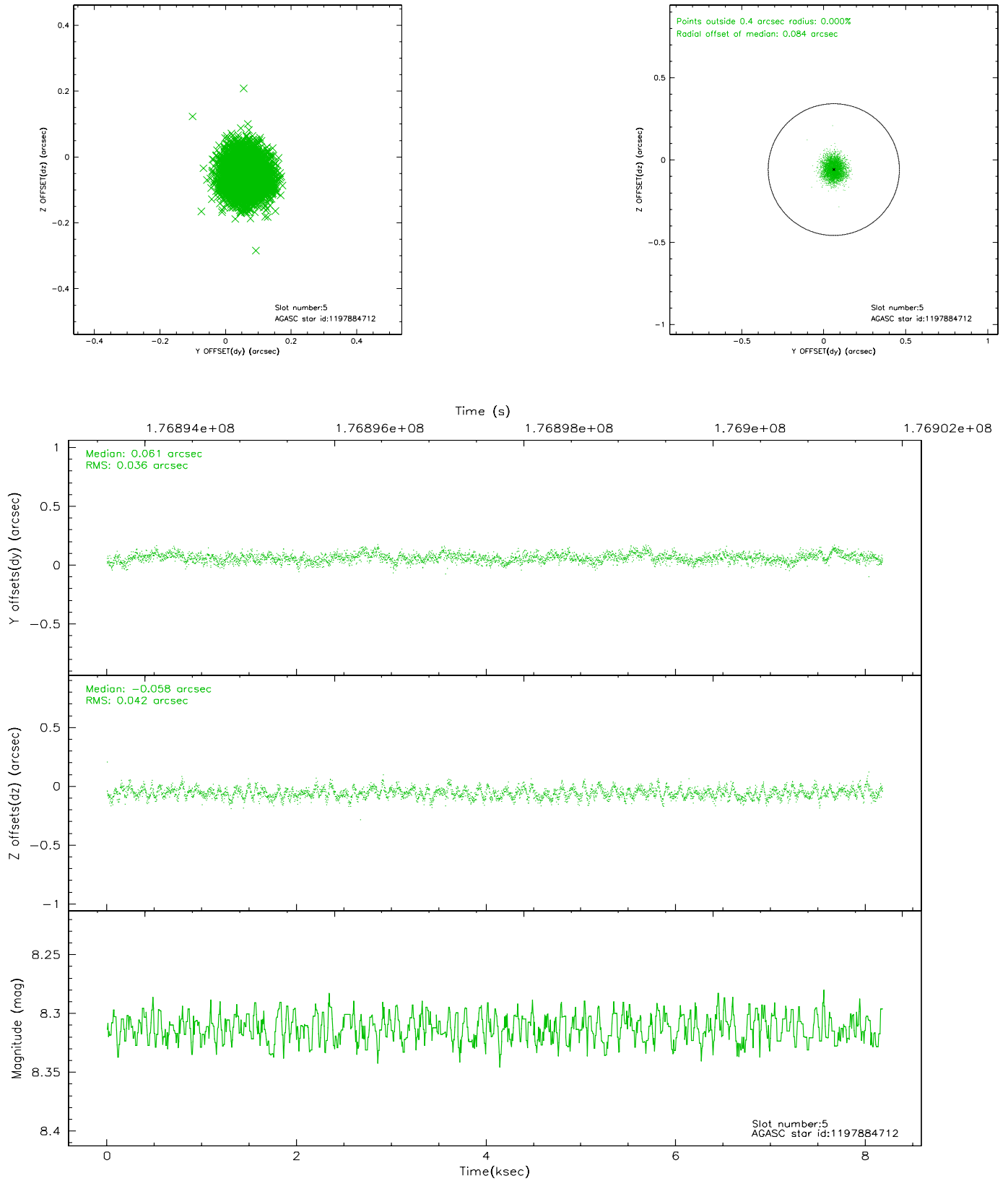
### 2.4.1 Slot 3



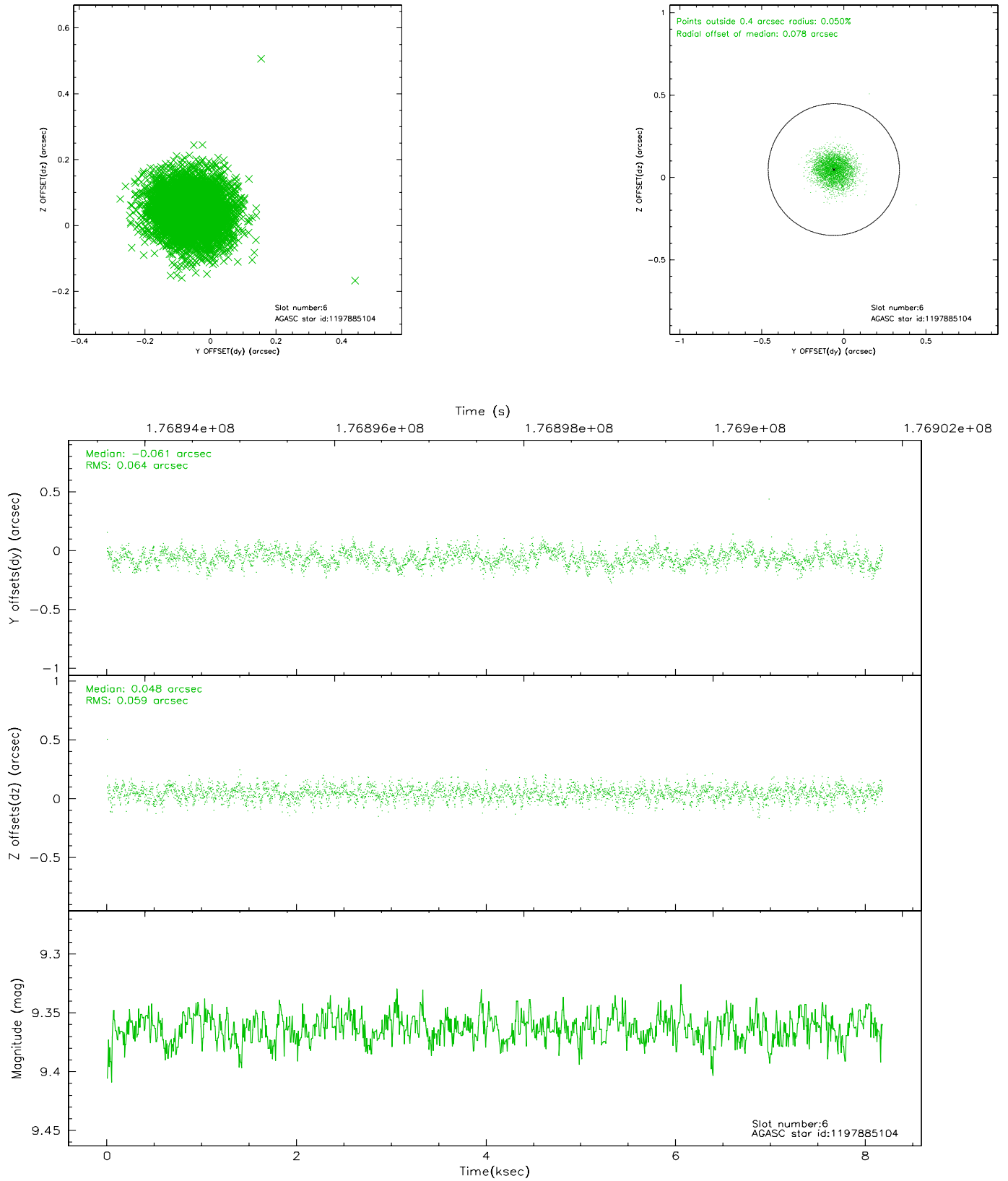
## 2.4.2 Slot 4



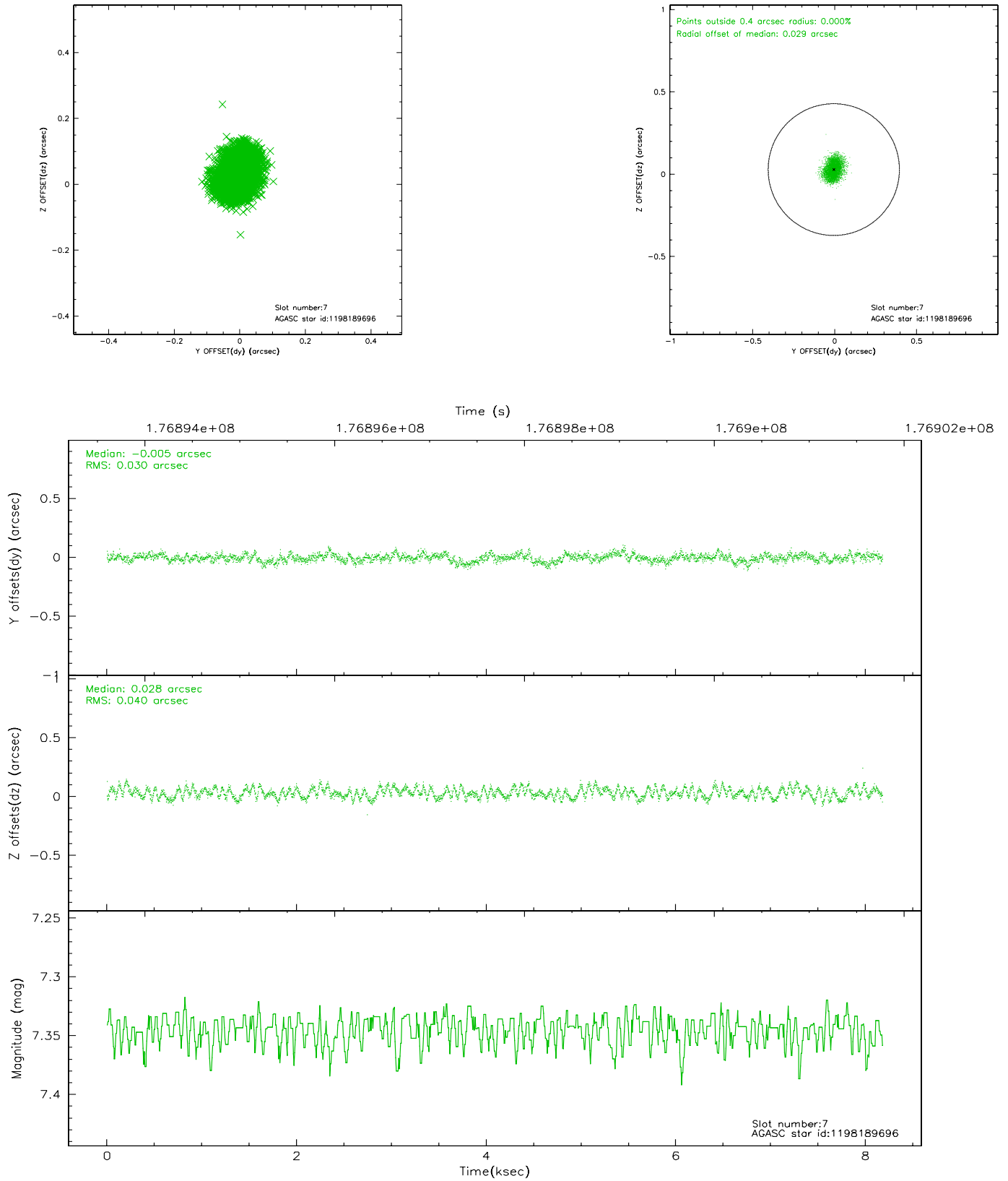
### 2.4.3 Slot 5



## 2.4.4 Slot 6

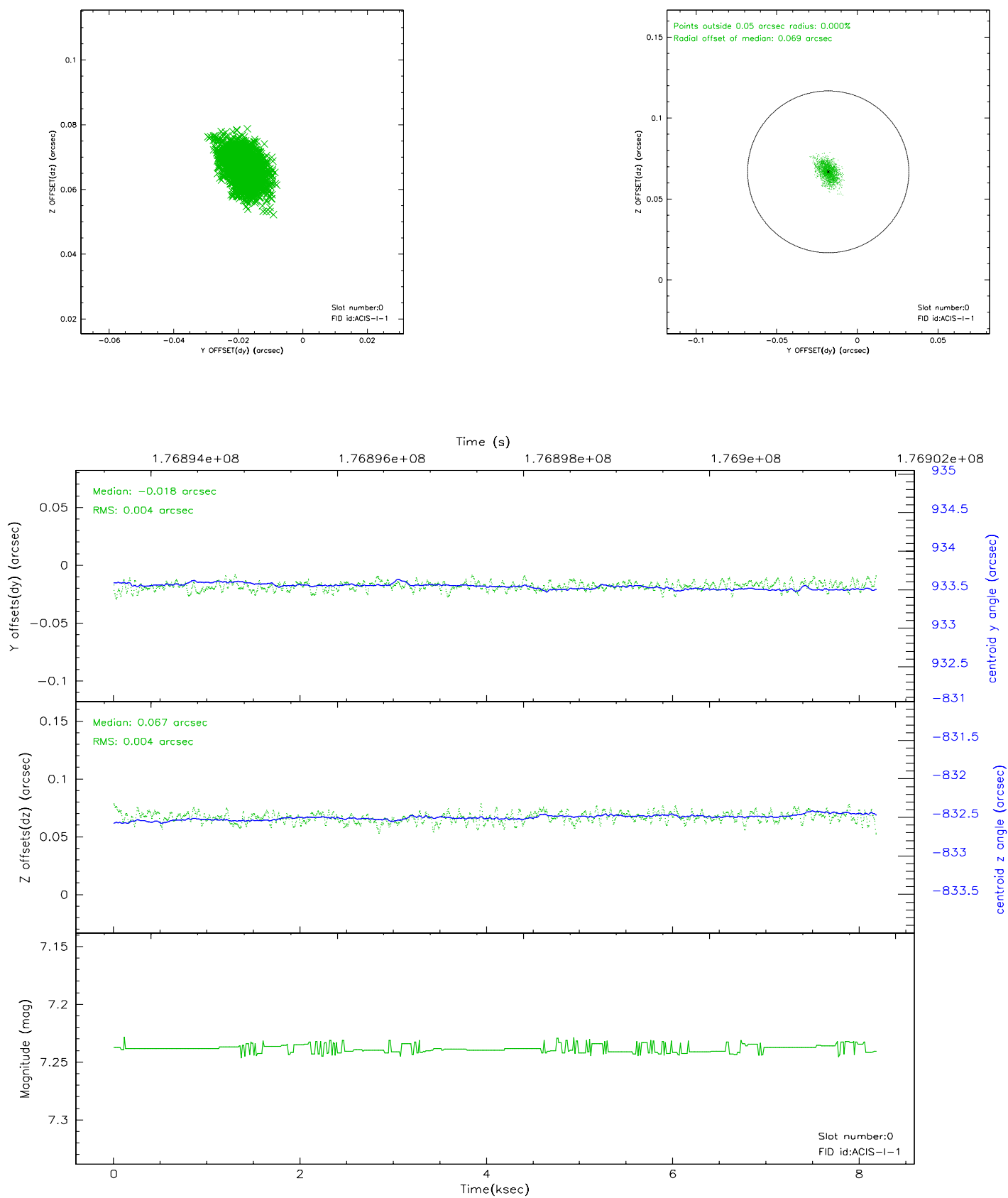


## 2.4.5 Slot 7

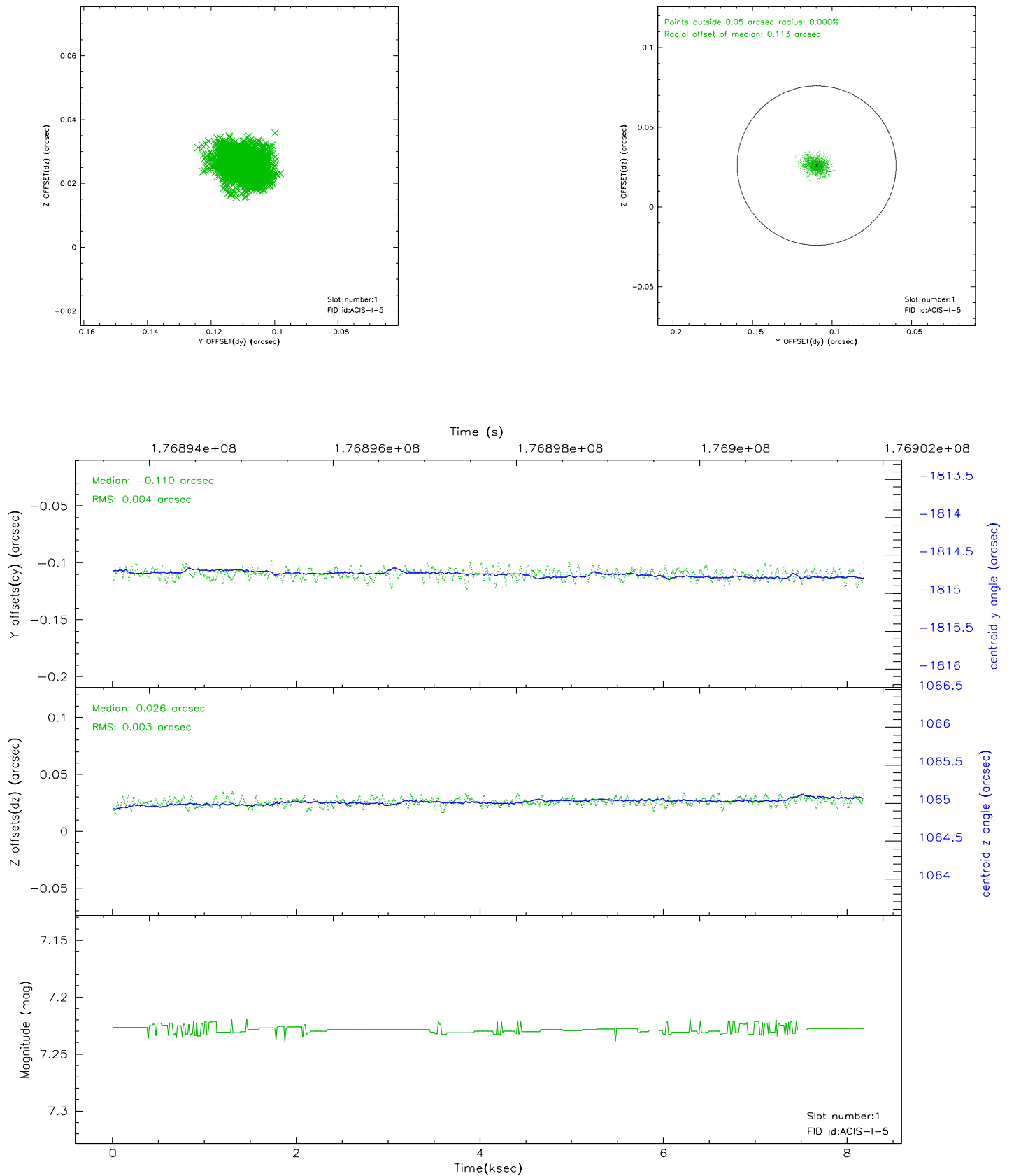


## 2.5 FID Slots

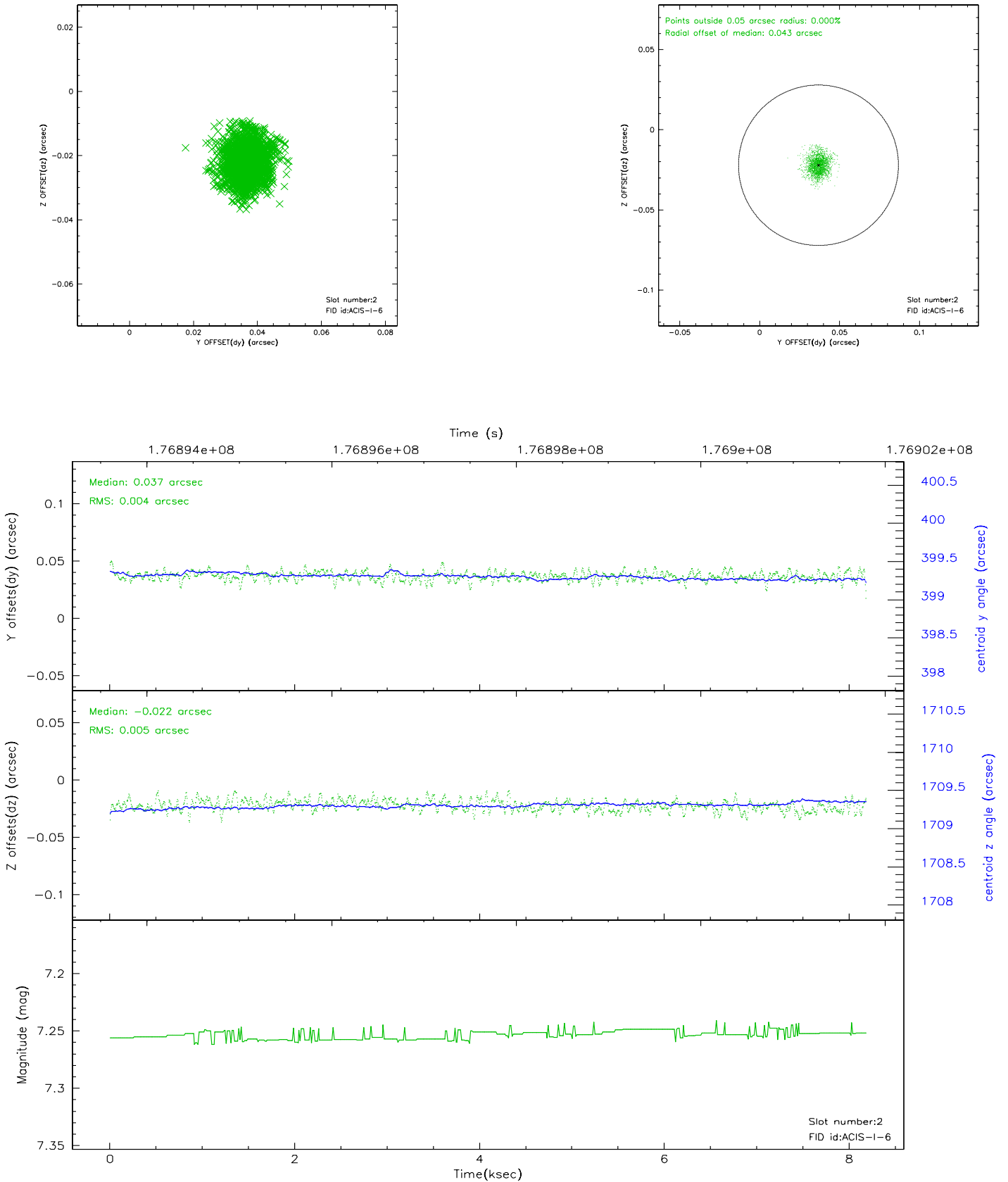
### 2.5.1 Slot 0



## 2.5.2 Slot 1

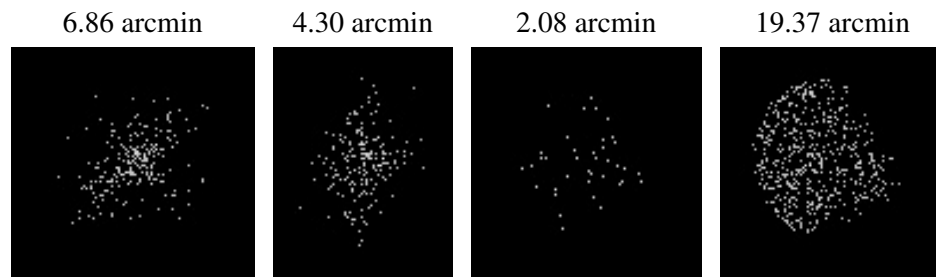


## 2.5.3 Slot 2





### 3 Point Sources



## A Summary

### A.1 Status

V&V Scientist	Jen Lauer
V&V Date (YYYY-MM-DD)	2006.07.11
V&V Edition	1
V&V Disposition and Status	OK
V&V Charge Time	7.757

### A.2 Comments

Window constraint met.