

V&V Reference Report

L2 ASCDS Version : 8.4.5

Observation 3527 - L2 Version 3
Chandra X-Ray Center

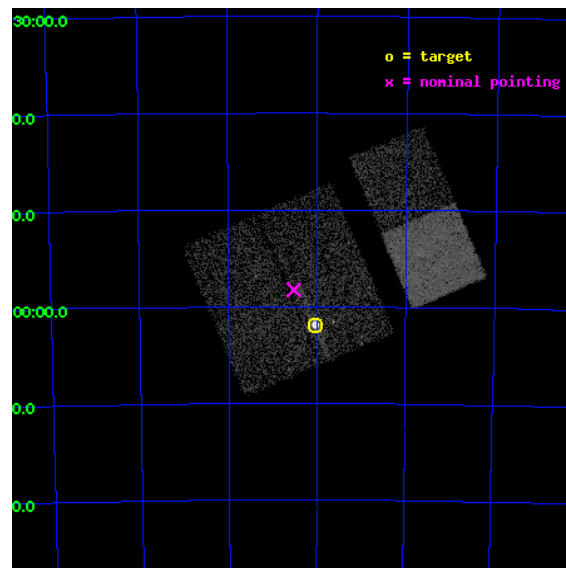
L2 Processing Date : Nov 1 2012

Contents

1	Front	2
2	OBI	3
2.1	OBI	3
2.1.1	Images	3
2.1.2	Bias	3
2.1.3	Parameters	4
2.1.4	Events	4
2.2	Compared Parameters	5
2.3	Aspect	6
2.4	Star Slots	9
2.4.1	Slot 3	9
2.4.2	Slot 4	10
2.4.3	Slot 5	11
2.4.4	Slot 6	12
2.4.5	Slot 7	13
2.5	FID Slots	14
2.5.1	Slot 0	14
2.5.2	Slot 1	15
2.5.3	Slot 2	16
A	Summary	17
A.1	Status	17
A.2	Comments	17

1 Front

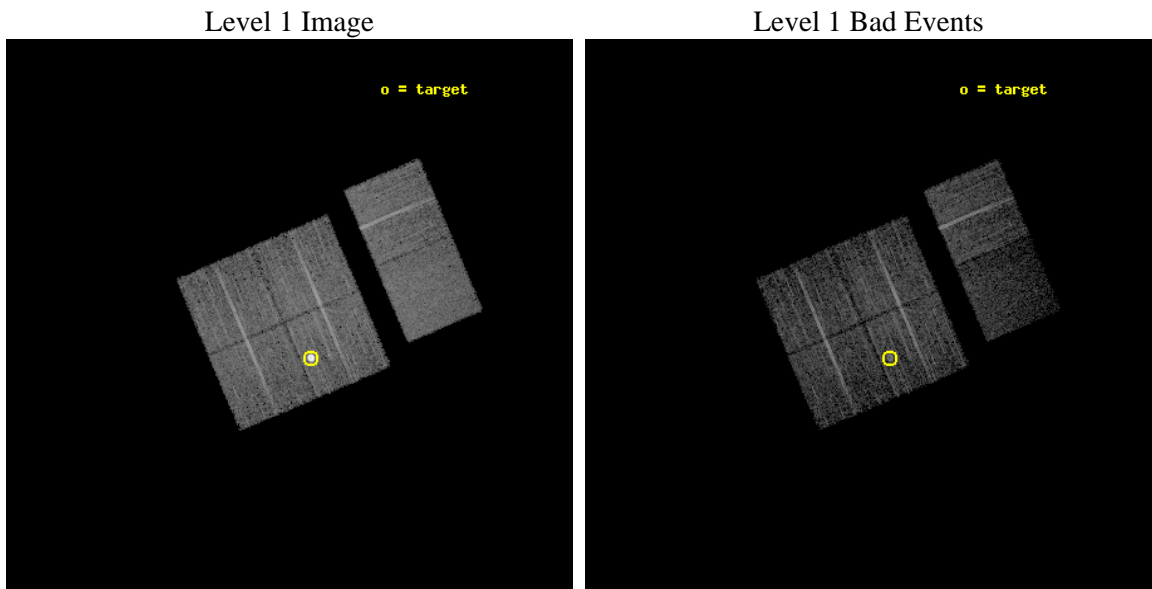
seq_num	590282	Sequence number
obs_id	3527	Observation id
title	AO4B ACIS-I CALIBRATION OBSERVATIONS OF E0102-72	Proposal title
observer	Dr. CXC Calibration	Principal investigator
object	E0102-72[I3,-120,-4.0,0.5,0]	Source name
dtcycle	0	
cycle	P	events from which exps? Prim/Second/Both
ra_targ	16.01	Observer's specified target RA [deg]
dec_targ	-72.032028	Observer's specified target Dec [deg]
ra_nom	16.130805487435	Nominal RA [deg]
dec_nom	-71.970905960276	Nominal Dec [deg]
roll_nom	66.966779460663	Nominal Roll [deg]
revision	3	Processing version of data
ontime	7964.7999703288	Sum of GTIs [s]
livetime	7863.9448772777	Livetime [s]
ontime0	7964.7999703288	Sum of GTIs [s]
ontime1	7964.7999703288	Sum of GTIs [s]
ontime2	7961.5589701533	Sum of GTIs [s]
ontime3	7964.7999703288	Sum of GTIs [s]
ontime6	7964.7999703288	Sum of GTIs [s]
ontime7	7964.7999703288	Sum of GTIs [s]
l2events	60737	Number of level 2 events



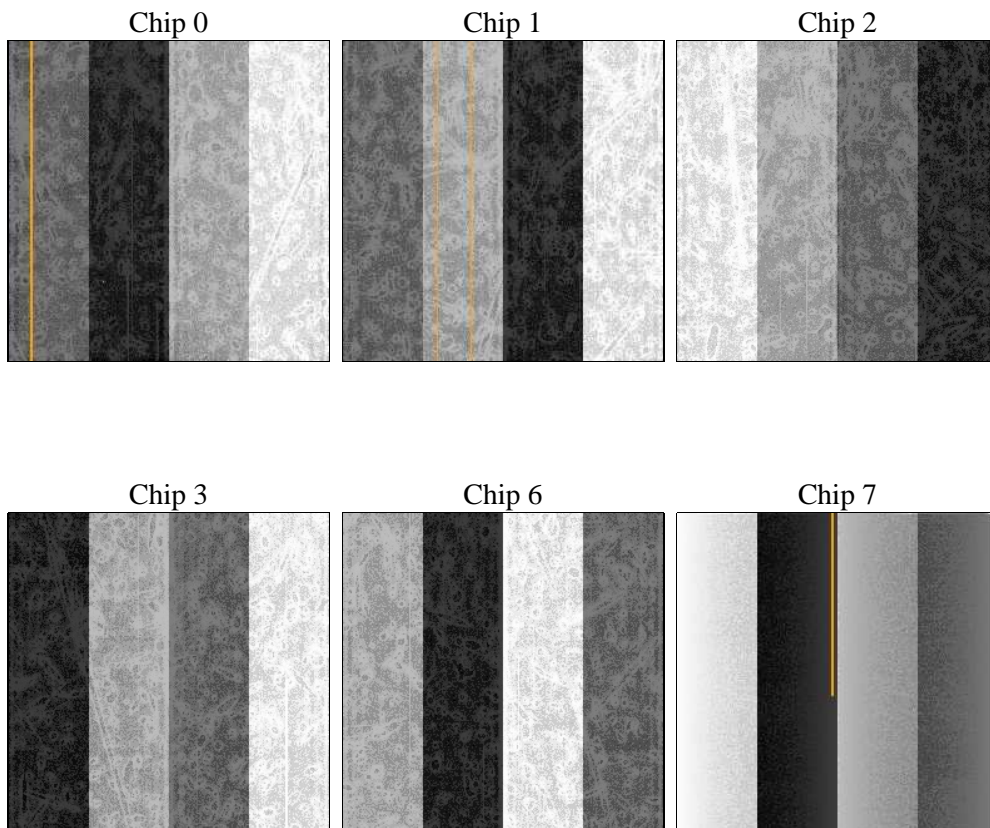
2 OBI

2.1 OBI

2.1.1 Images



2.1.2 Bias



2.1.3 Parameters

obi_num	0	Obi number	sched_exp_time	8000.000000	[s] Scheduled observation exposure time
ascdsver	8.4.5	Processing system revision	ontime	7964.7999703288	Sum of GTIs [s]
caldsver	4.5.2	 	ontime0	7964.7999703288	Sum of GTIs [s]
date	2012-11-01T10:36:34	Date and time of file creation	ontime1	7964.7999703288	Sum of GTIs [s]
revision	3	Processing version of data	ontime2	7961.5589701533	Sum of GTIs [s]
			ontime3	7964.7999703288	Sum of GTIs [s]
			ontime6	7964.7999703288	Sum of GTIs [s]
			ontime7	7964.7999703288	Sum of GTIs [s]
			l1events	251314	Number of level 1 events

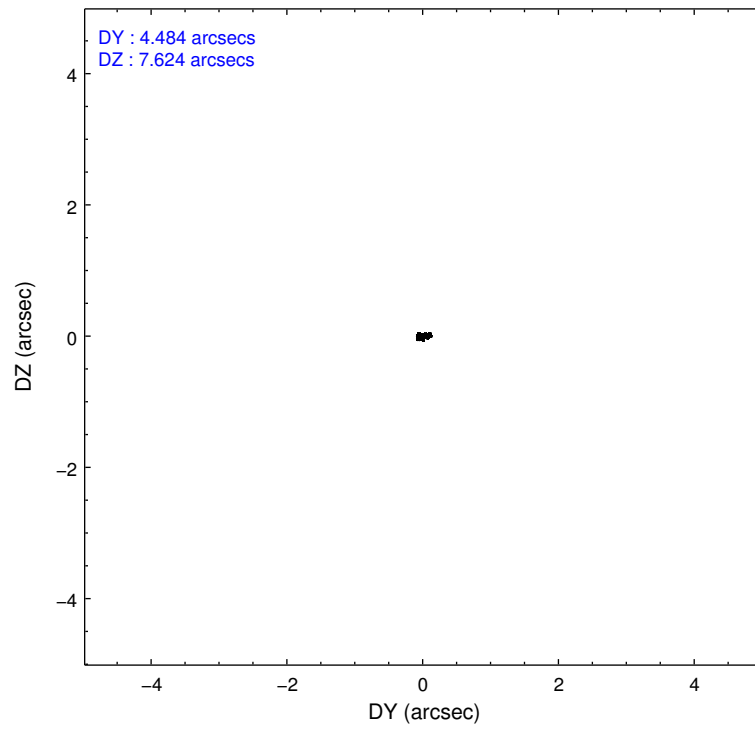
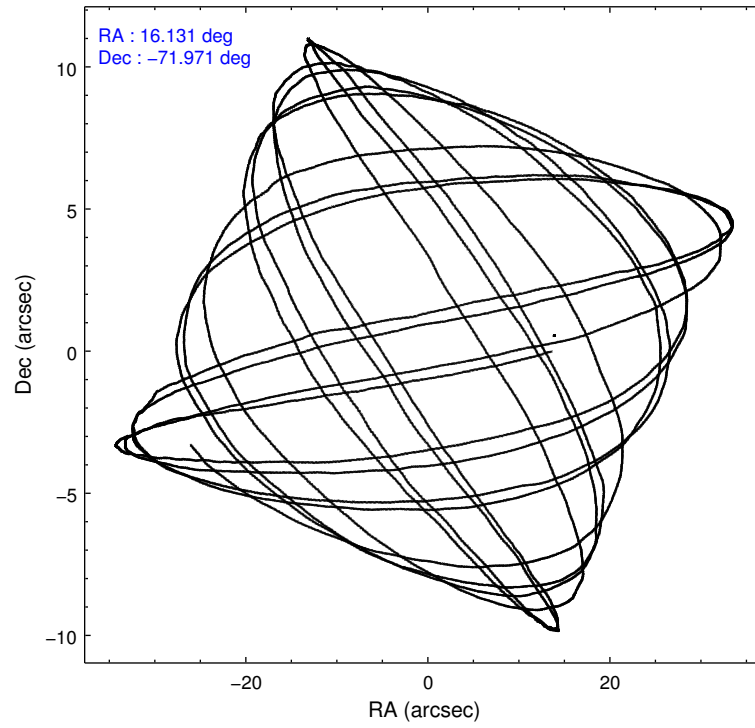
2.1.4 Events

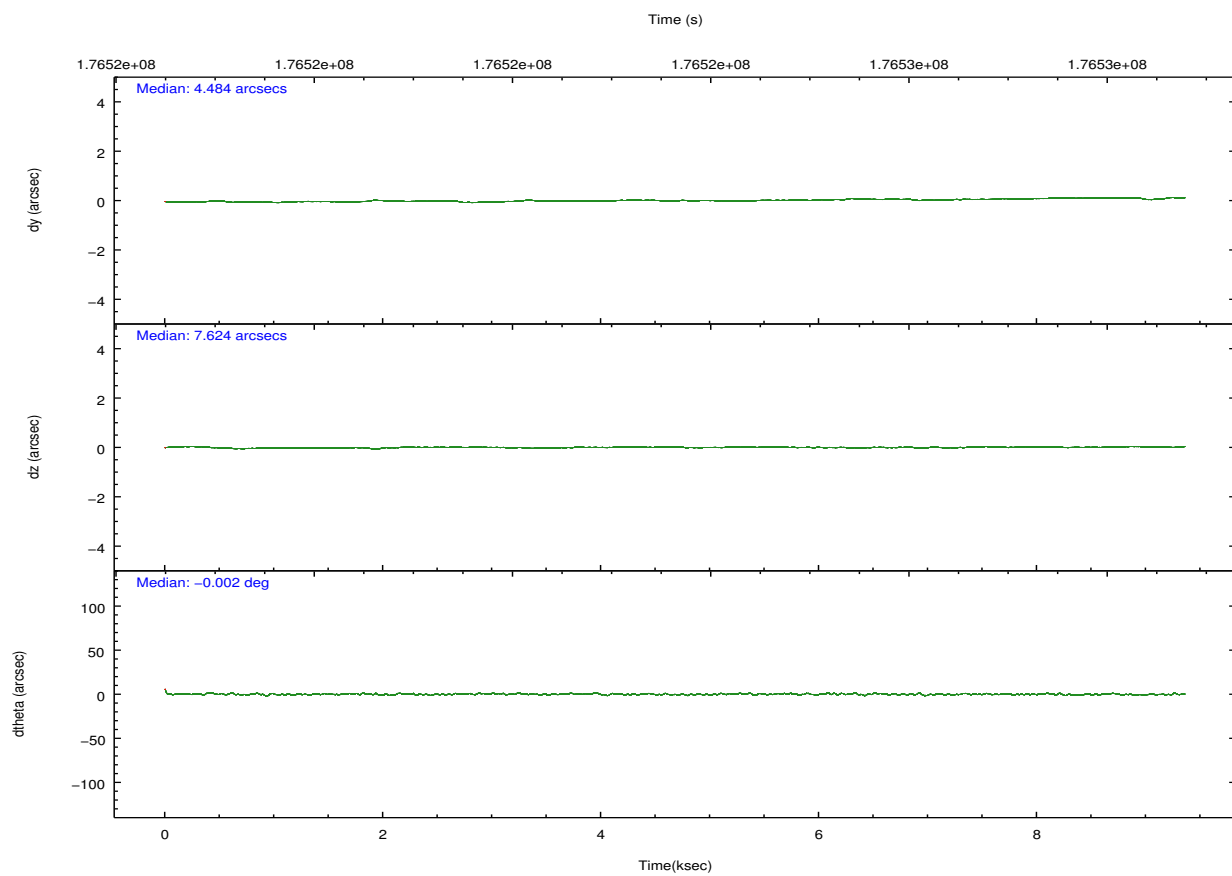
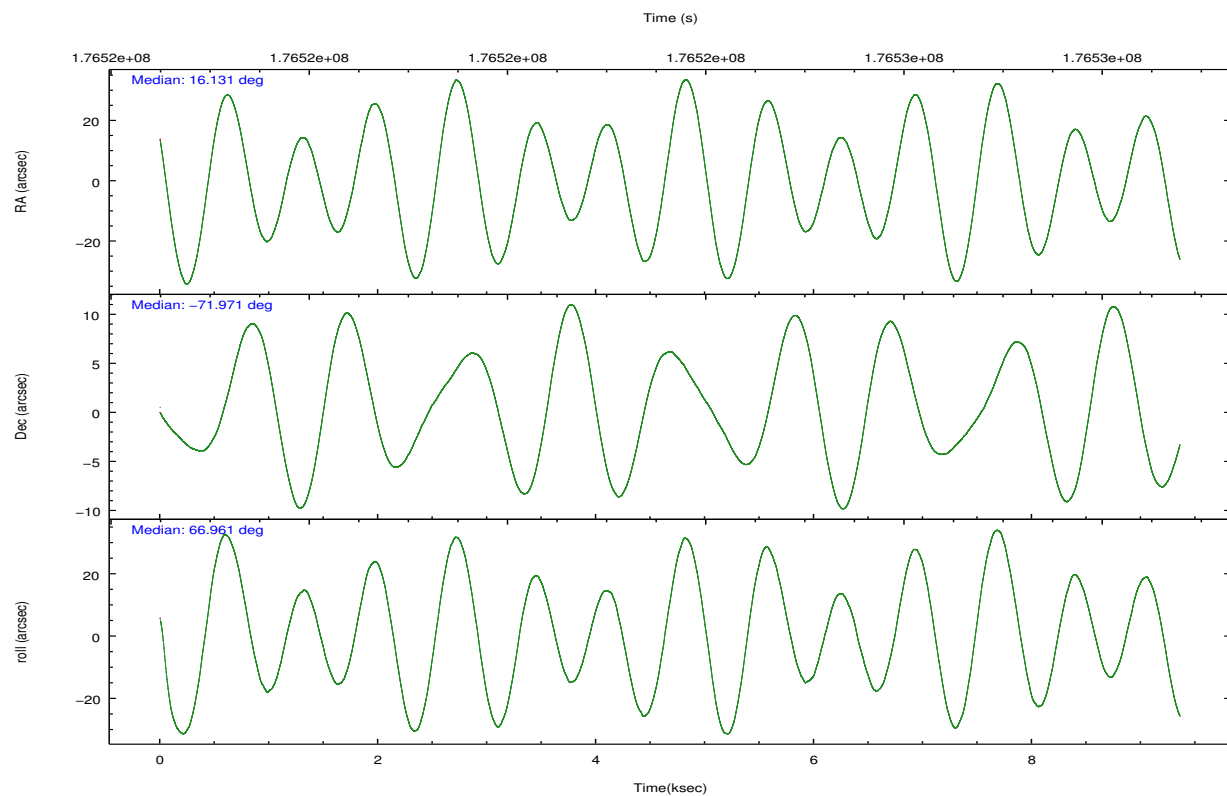
	ccd 0	ccd 1	ccd 2	ccd 3	ccd 6	ccd 7		ccd 0	ccd 1	ccd 2	ccd 3	ccd 6	ccd 7
level 1 events	35803	33744	39603	65838	39805	36521	grade 0 events	1524	1858	1461	24710	1494	2057
rejected events	31870	29317	35905	35876	35753	17901		4%	5%	3%	37%	3%	5%
rejected %	89%	86%	90%	54%	89%	49%	grade 1 events	27	13	21	233	9	43
								0%	0%	0%	0%	0%	0%
							grade 2 events	876	873	775	2681	824	4013
								2%	2%	1%	4%	2%	10%
							grade 3 events	450	473	427	841	452	1769
								1%	1%	1%	1%	1%	4%
							grade 4 events	408	480	440	895	429	1794
								1%	1%	1%	1%	1%	4%
							grade 5 events	1097	1209	1019	1401	1333	3852
								3%	3%	2%	2%	3%	10%
							grade 6 events	677	745	595	846	854	8993
								1%	2%	1%	1%	2%	24%
							grade 7 events	30744	28093	34865	34231	34410	14000
								85%	83%	88%	51%	86%	38%

2.2 Compared Parameters

Parameter	Planned	Actual	Parameter	Planned	Actual
Instrument	ACIS	ACIS	Obspar format version number	7	7
Detector	ACIS-012367	ACIS-012367	Obspar file type	PREDICTED	ACTUAL
Grating	NONE	NONE	Obspar update status	NONE	UPDATED
Data mode	VFAINT	VFAINT	Number of optional ACIS chips dropped	0	0
Observation mode	POINTING	POINTING	On-chip summing requested	N	N
[deg] Pointing RA	16.142004	16.13080548743525	Subarray requested	NONE	NONE
[deg] Pointing Dec	-71.998047	-71.9709059602765	Alternating exposures requested	N	N
[deg] Pointing Roll	66.768745	66.96677946066271	[s] Primary exposure time	0.000000	3.2
[s] Window start time (MET)	174614464.184000	174614464.184000			
[s] Window stop time (MET)	177292864.184000	177292864.184000			
[mm] SIM focus pos	-0.782348	-0.7809083437167272			
[mm] SIM defocus	0	0.001439871863259334			
[mm] SIM translation stage pos	-233.592463	-233.5874344608287			
[mm] SIM translation stage offset	0	-0.005018542100998502			
[s] Observation start time (MET)	176520323.184000	176518777.47208			
Observation start date	2003-08-06T01:24:19	2003-08-06T00:59:37			
[s] Observation end time (MET)	176528323.184000	176529422.61003			
Observation end date	2003-08-06T03:37:39	2003-08-06T03:57:02			
Read mode	TIMED	TIMED			

2.3 Aspect



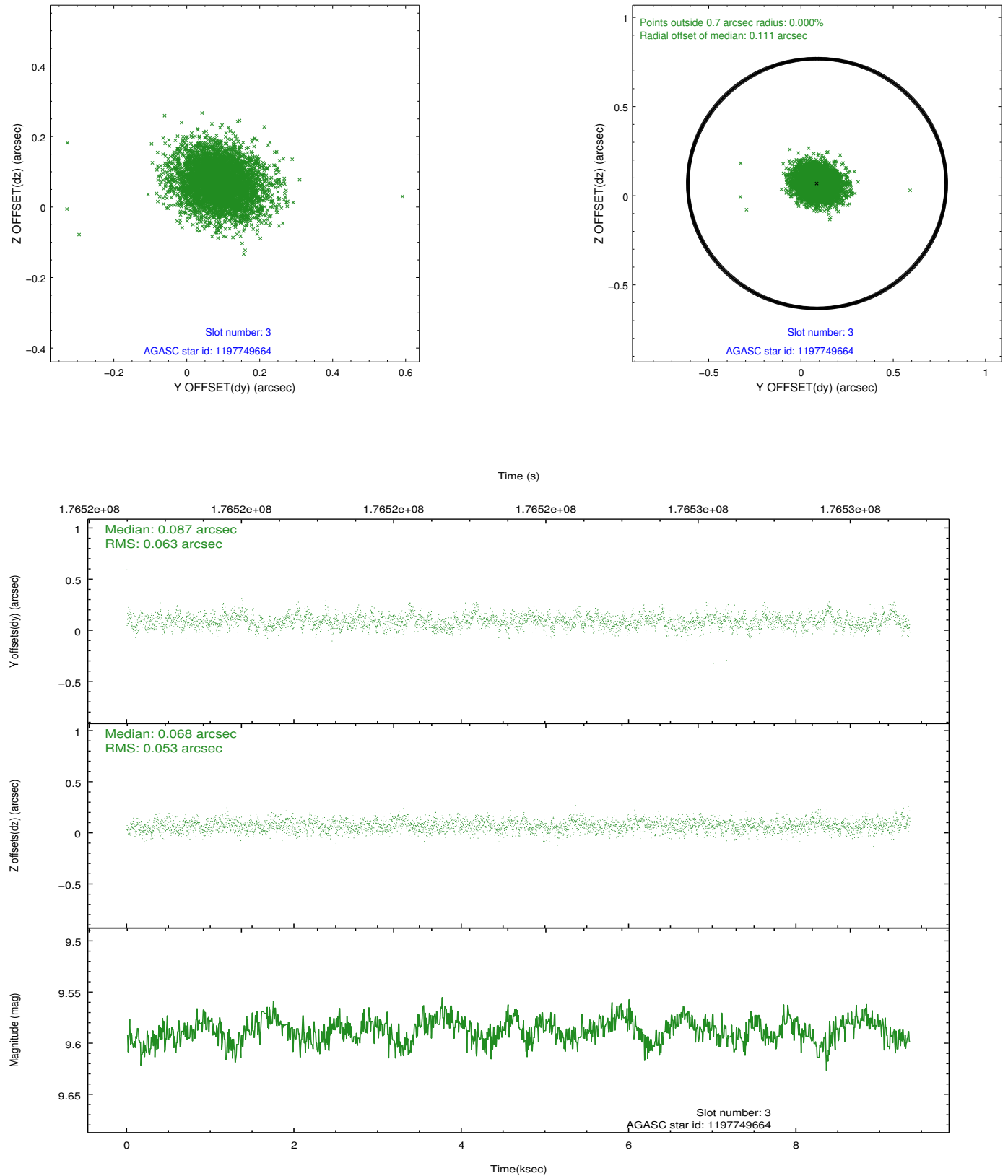


Slot Statistics

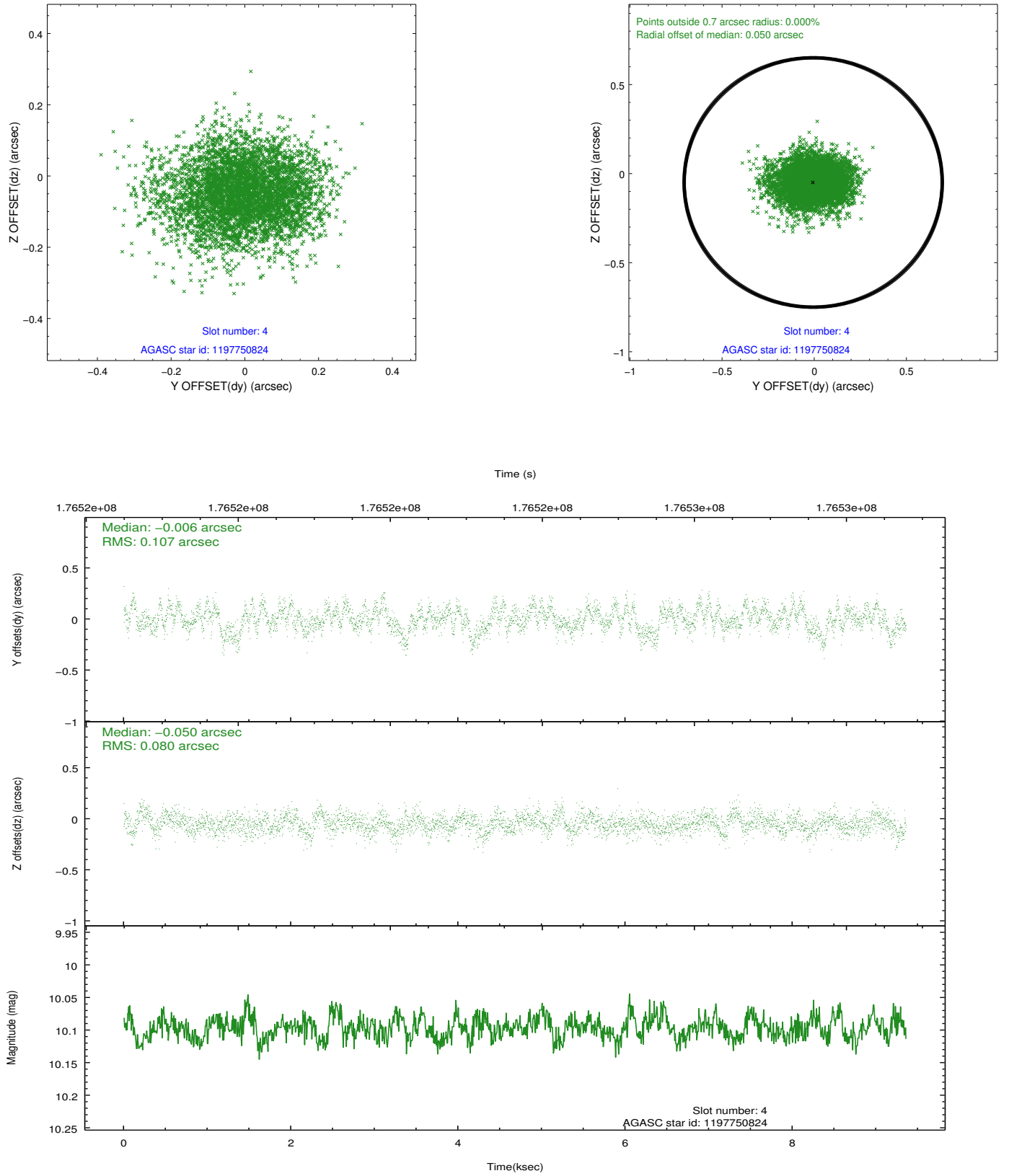
slot	status	id	mag	n_pts	med_dy	med_dz	dr1	dr2	ra	dec	mean_y	mean_z
0	FID	ACIS-I-2	7.13	2283	-0.069	-0.104	0.009	0.017	0.000000	0.000000	-758.98	-837.50
1	FID	ACIS-I-4	7.17	2283	0.125	0.072	0.006	0.010	0.000000	0.000000	2155.01	1068.56
2	FID	ACIS-I-5	7.22	2283	-0.156	0.100	0.009	0.015	0.000000	0.000000	-1812.15	1067.10
3	GUIDE	1197749664	9.59	4563	0.087	0.068	0.085	0.141	15.809015	-72.366369	-1362.12	-189.80
4	GUIDE	1197750824	10.10	4564	-0.006	-0.050	0.143	0.234	14.791487	-71.393477	1372.04	2277.14
5	GUIDE	1197750936	7.55	4566	-0.117	-0.029	0.067	0.103	15.387940	-71.549550	1140.14	1424.74
6	GUIDE	1198190968	10.00	4562	0.087	-0.032	0.104	0.171	15.749622	-72.545972	-1980.28	-389.16
7	GUIDE	1197885104	9.36	4561	-0.050	0.039	0.089	0.140	17.845067	-72.189368	82.12	-2005.14

2.4 Star Slots

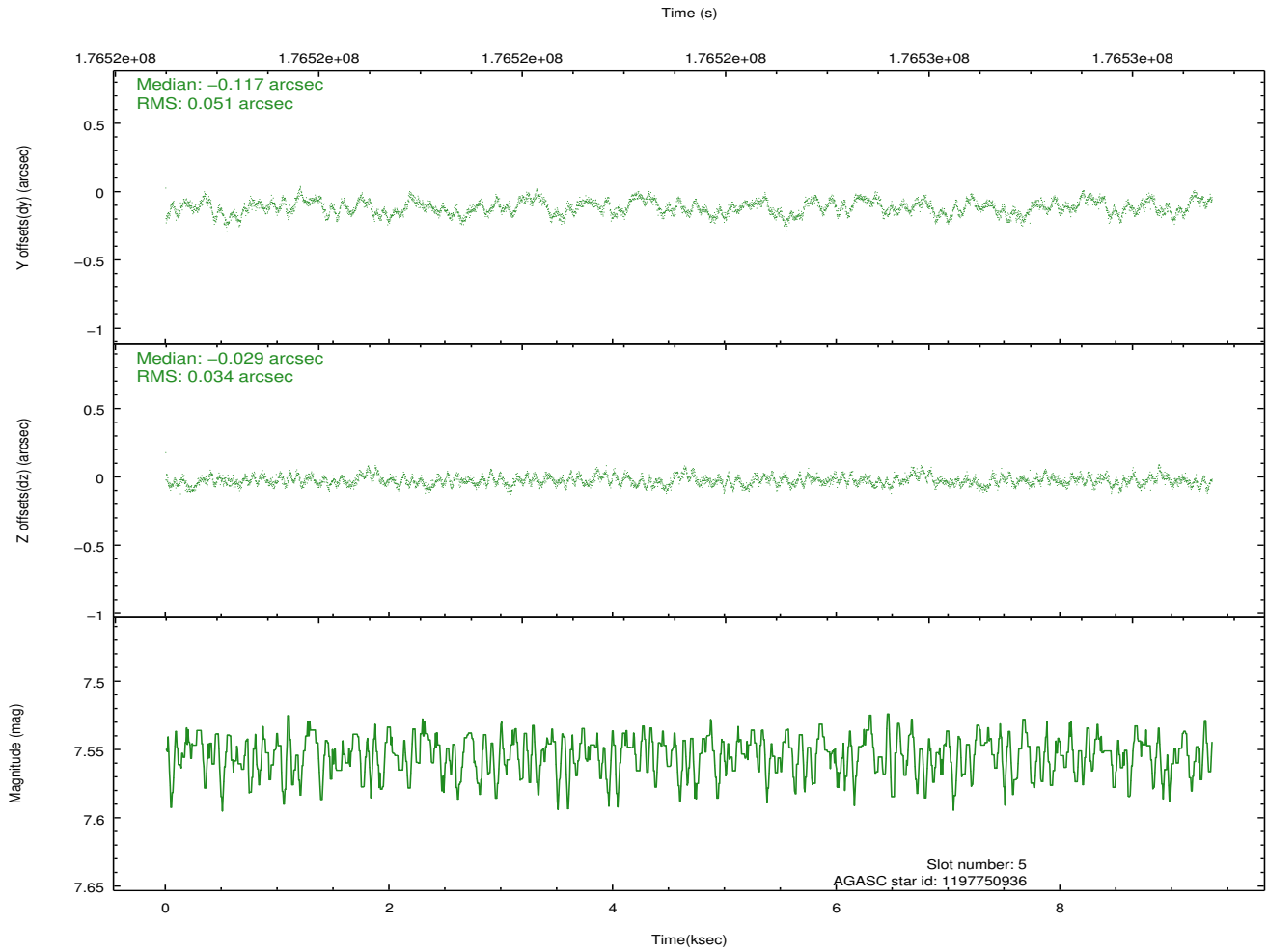
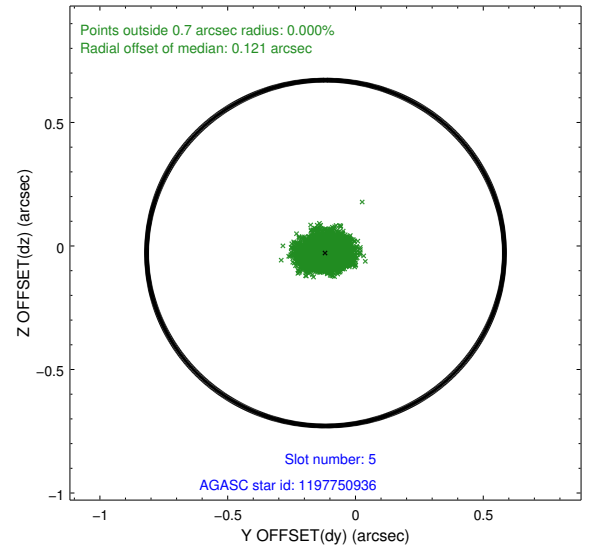
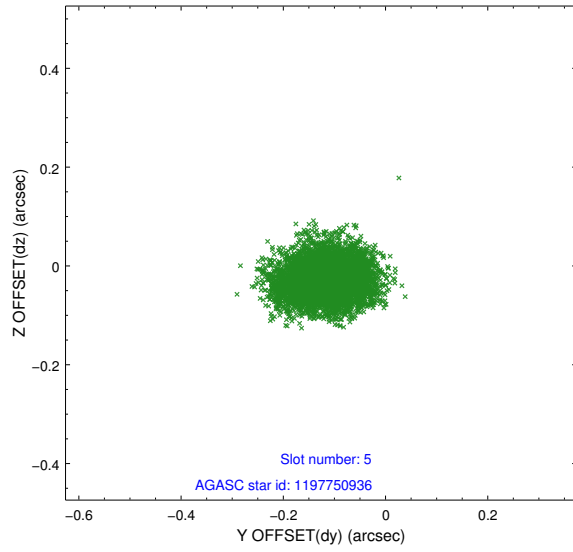
2.4.1 Slot 3



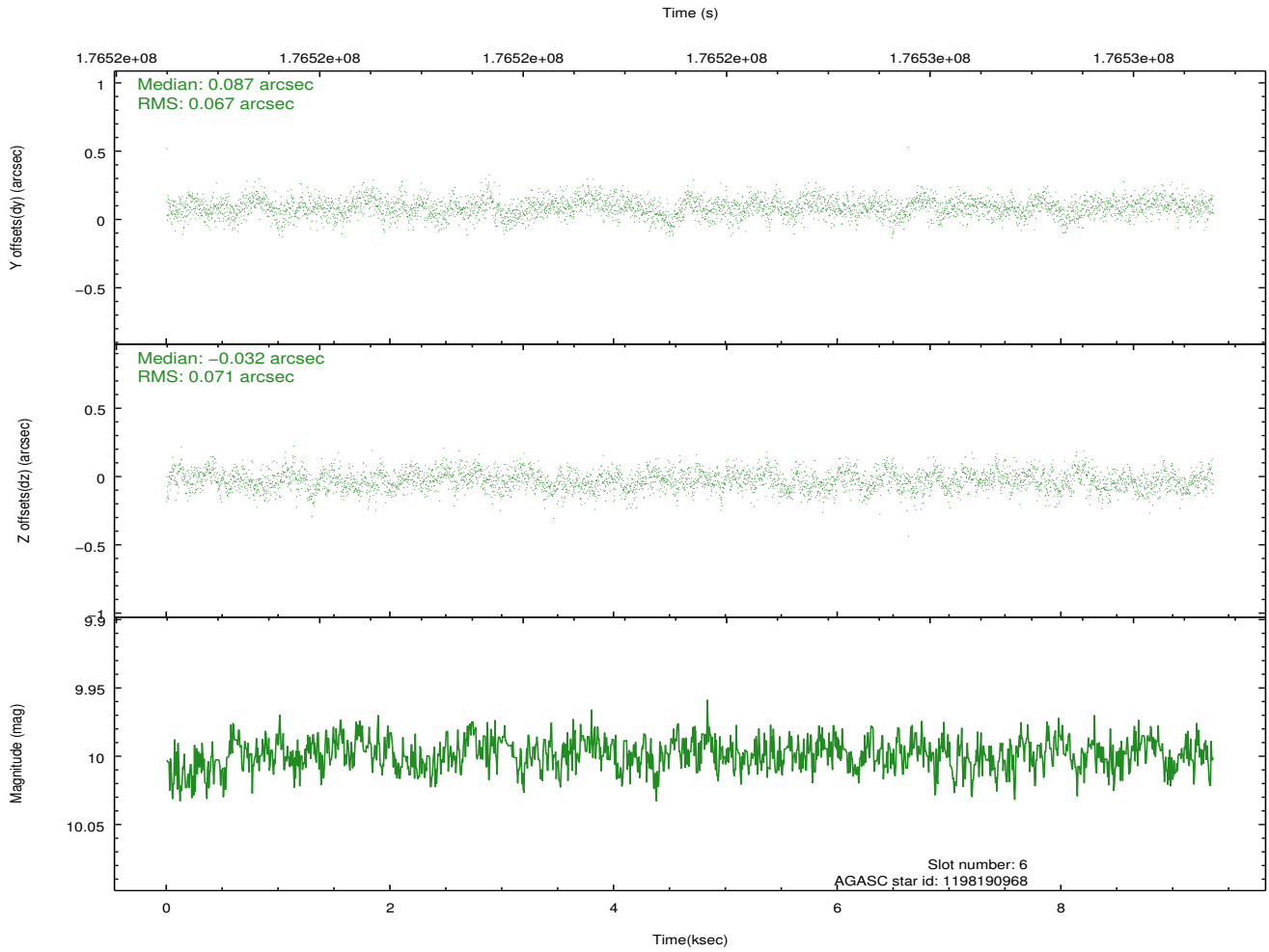
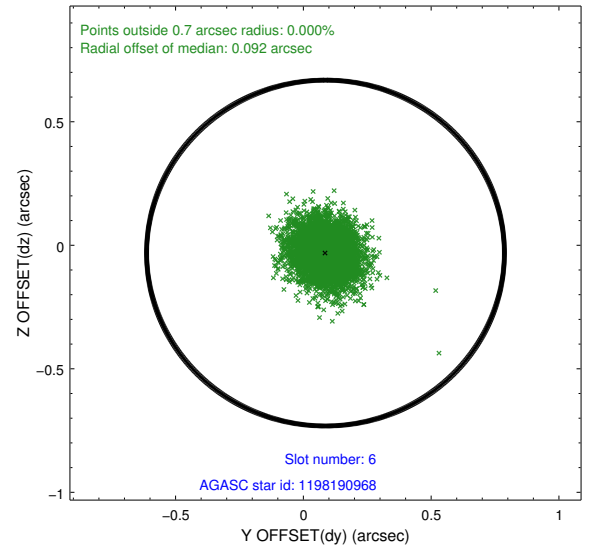
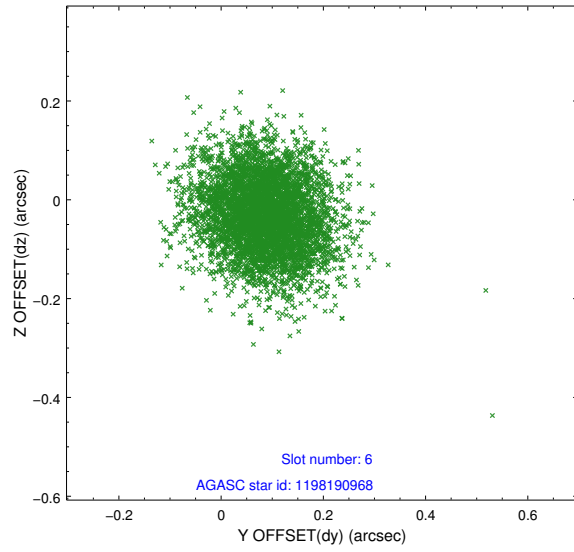
2.4.2 Slot 4



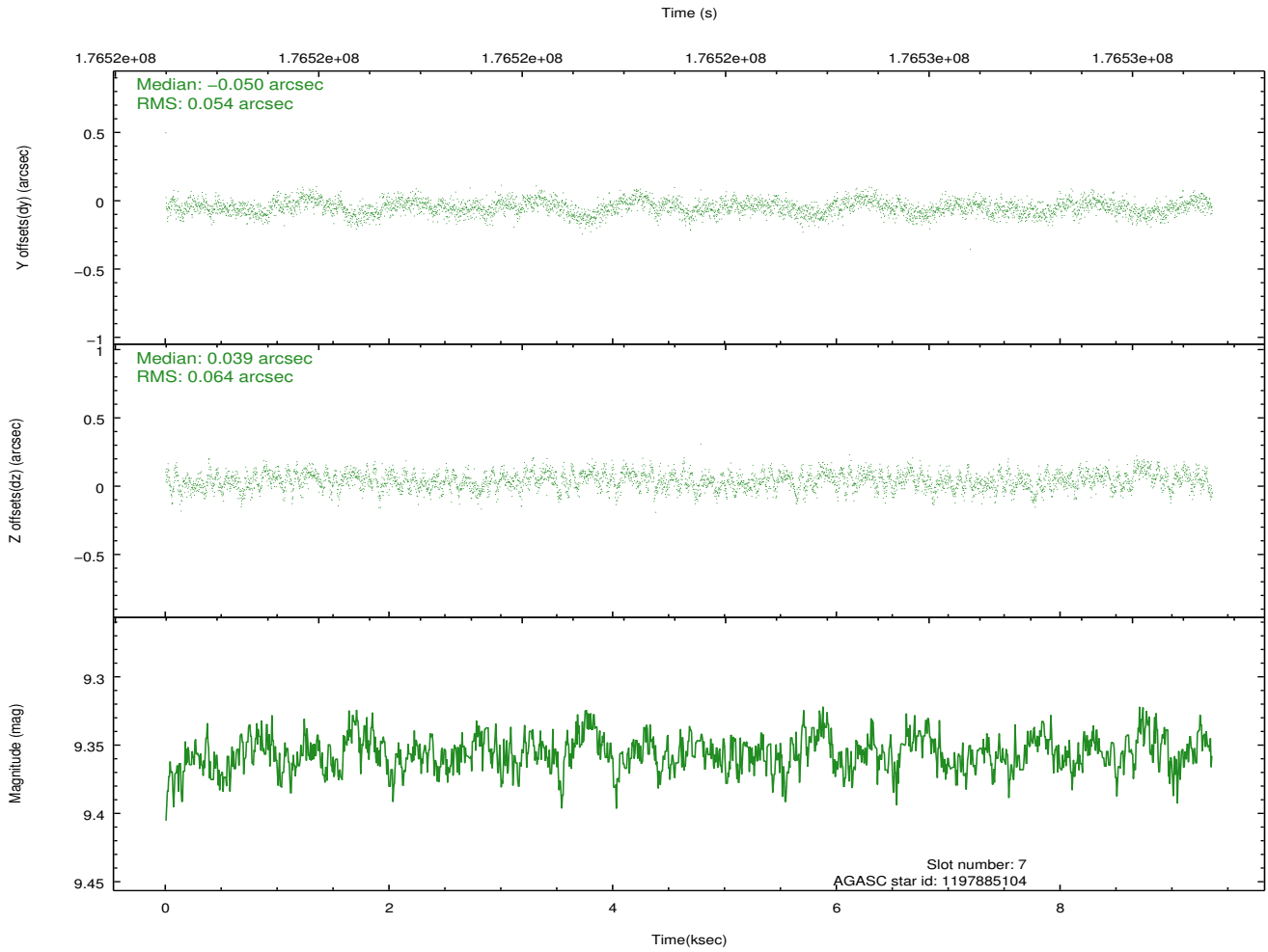
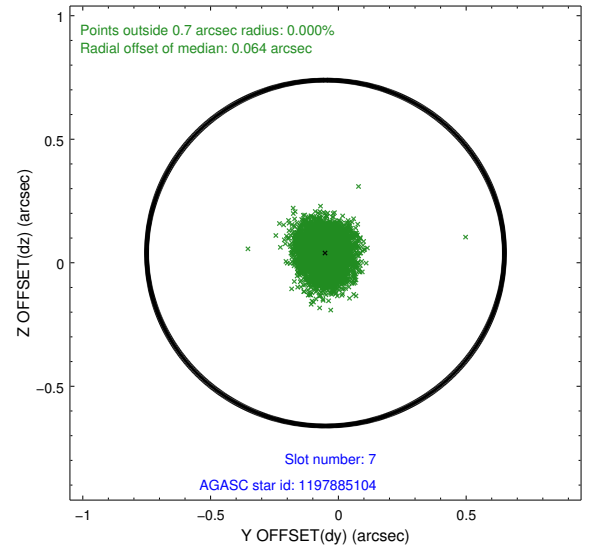
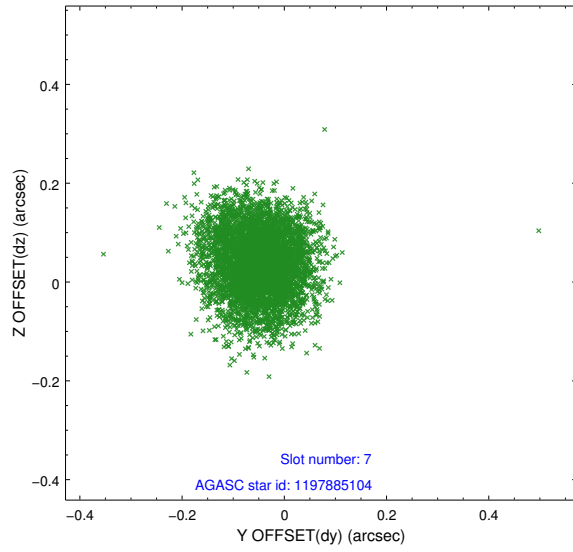
2.4.3 Slot 5



2.4.4 Slot 6

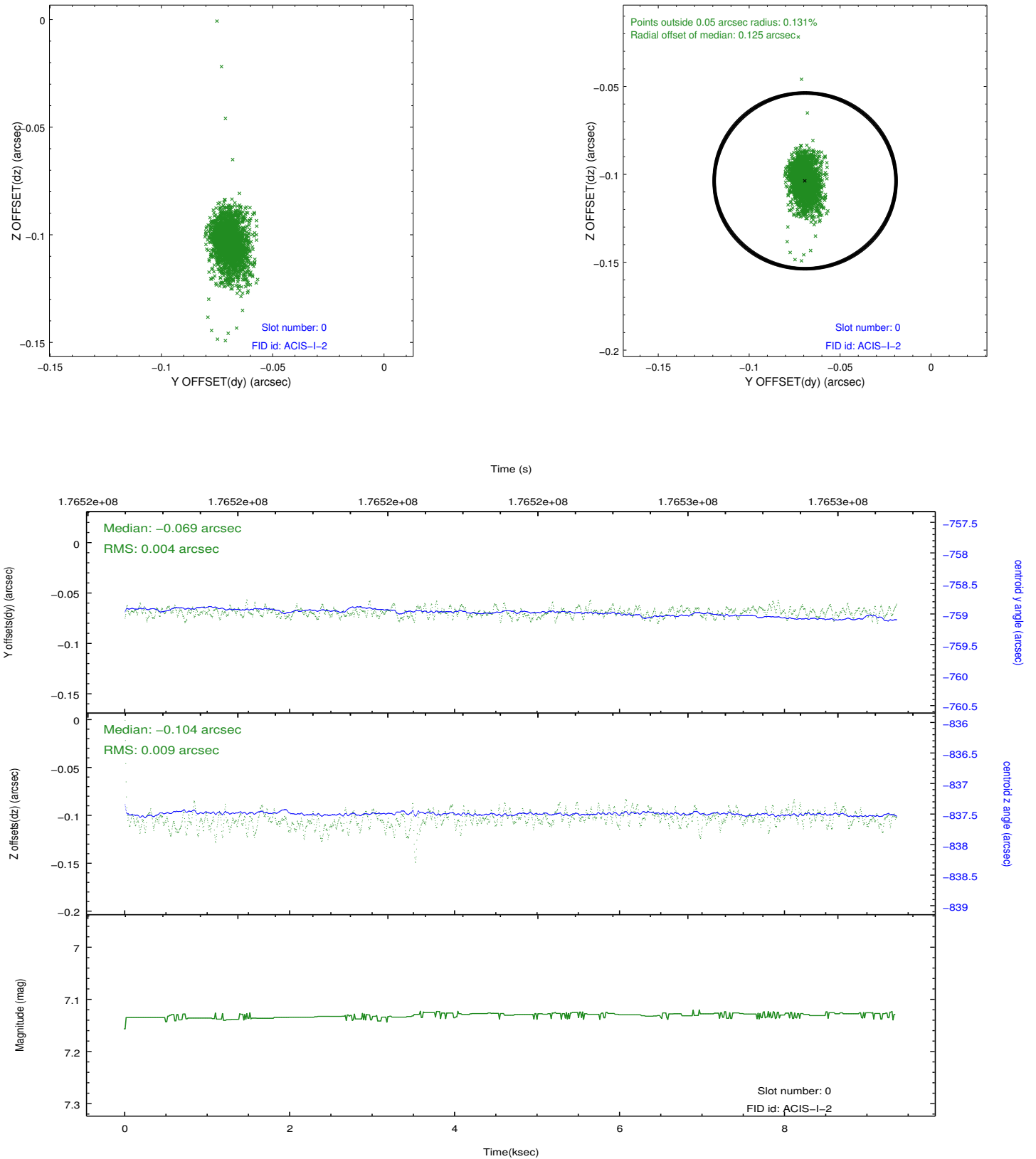


2.4.5 Slot 7

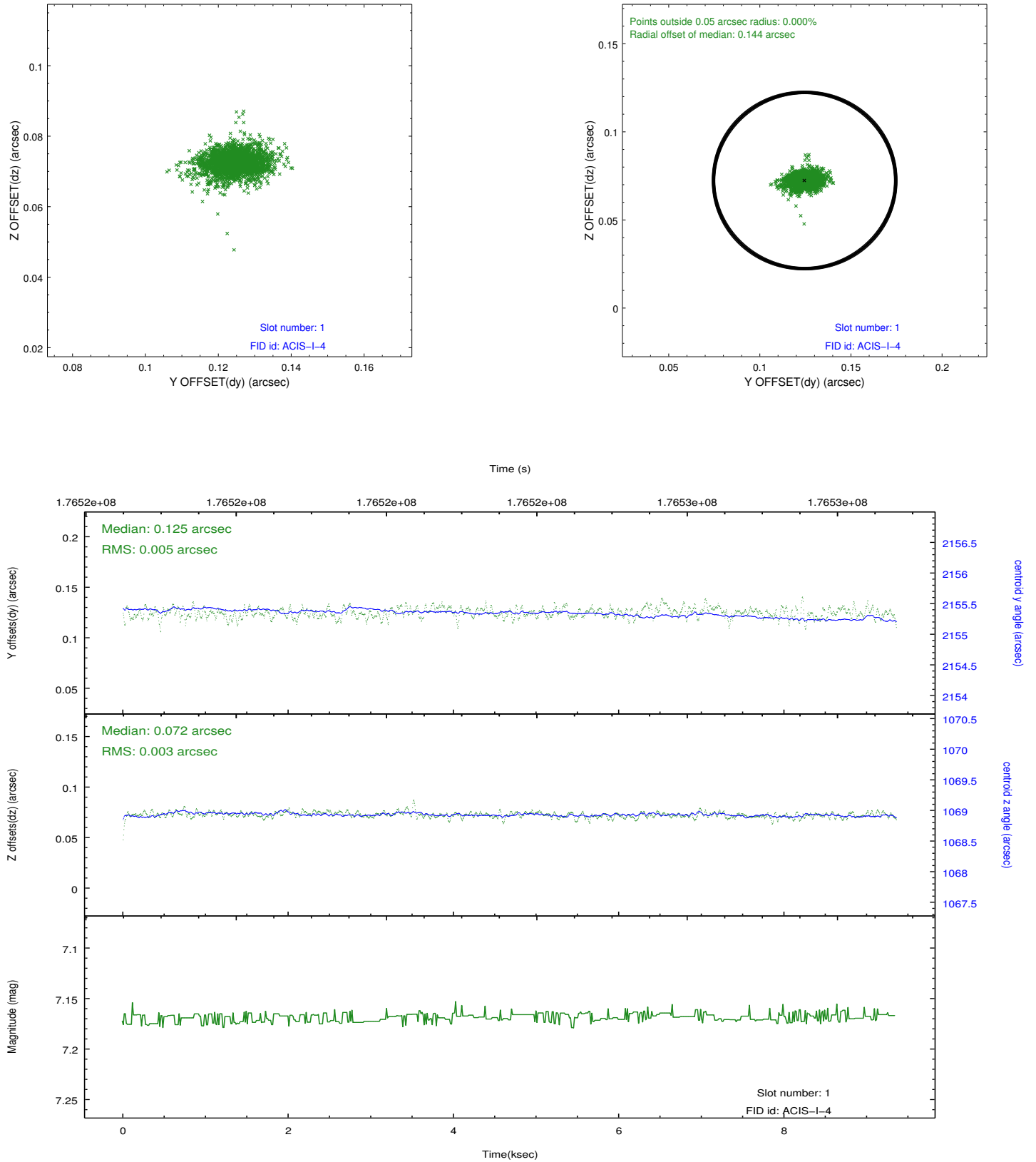


2.5 FID Slots

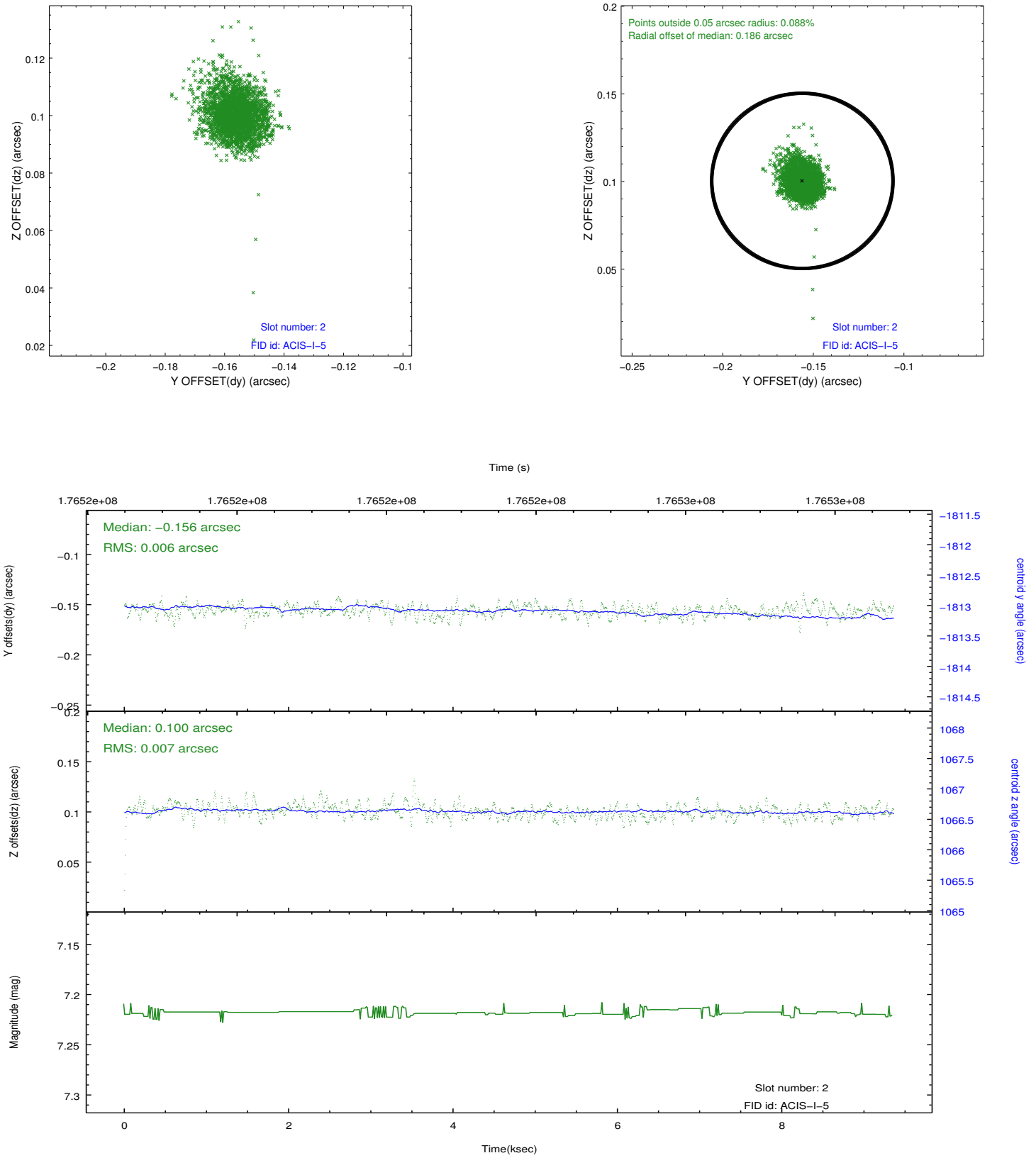
2.5.1 Slot 0



2.5.2 Slot 1



2.5.3 Slot 2



A Summary

A.1 Status

V&V Scientist	Beth Sundheim
V&V Date (YYYY-MM-DD)	2012.11.18
V&V Edition	1
V&V Disposition and Status	OK
V&V Charge Time	7.967

A.2 Comments

Window preference met.