

V&V Reference Report

L2 ASCDS Version : 7.6.8

Observation 3677 - L2 Version 001
Chandra X-Ray Center

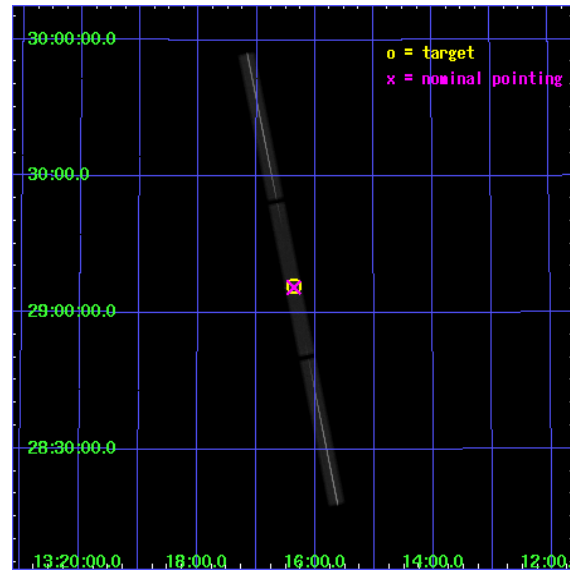
L2 Processing Date : Jul 12 2006

Contents

1	Front	2
2	OBI	3
2.1	OBI	3
2.1.1	Images	3
2.1.2	Parameters	4
2.1.3	Events	4
2.2	Compared Parameters	5
2.3	Aspect	6
2.4	Star Slots	9
2.4.1	Slot 3	9
2.4.2	Slot 4	10
2.4.3	Slot 5	11
2.4.4	Slot 6	12
2.4.5	Slot 7	13
2.5	FID Slots	14
2.5.1	Slot 0	14
2.5.2	Slot 1	15
2.5.3	Slot 2	16
3	Gratings	17
3.1	LETG Arm	17
A	Summary	19
A.1	Status	19
A.2	Comments	19

1 Front

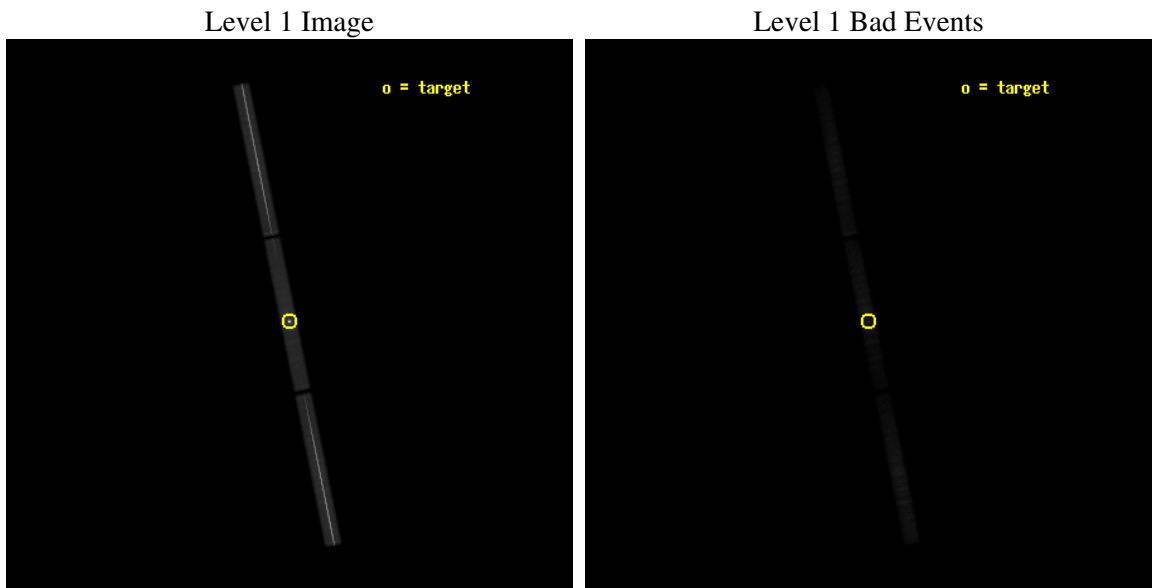
seq_num	290231
obs_id	3677
title	AO4 CALIBRATION OBSERVATIONS OF HZ43
observer	Dr. CXC Calibration
object	HZ43
ra_targ	199.092083
dec_targ	29.099
ra_nom	199.09086013404
dec_nom	29.094405255392
roll_nom	258.4180877204
revision	2
ontime	20179.432110399
livetime	20009.822796234
l2events	1616402



2 OBI

2.1 OBI

2.1.1 Images



2.1.2 Parameters

obi_num	0
ascdsver	7.6.8
caldbver	3.2.2
date	2006-07-12T11:34:33
revision	2

sched_exp_time	20000.000000
ontime	20179.432110399
l1events	2100512

2.1.3 Events

Level 1 Events

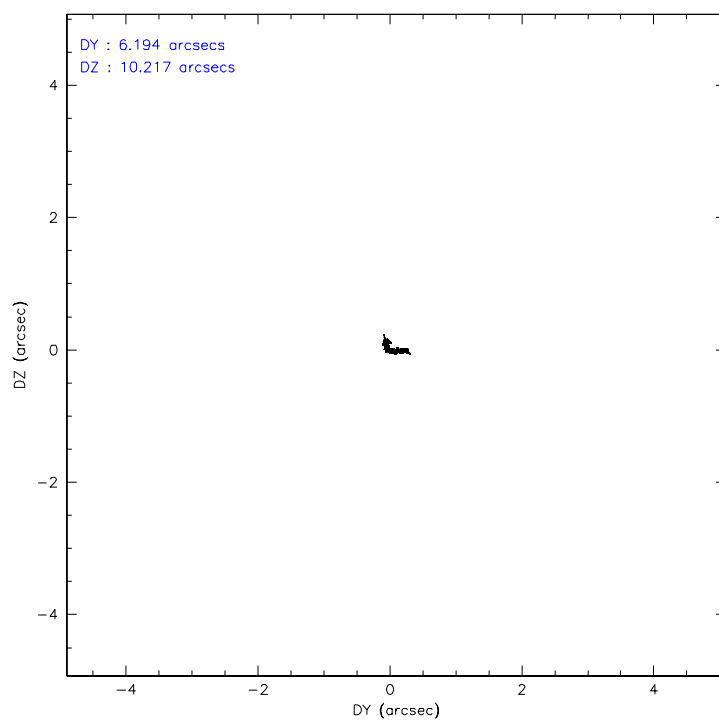
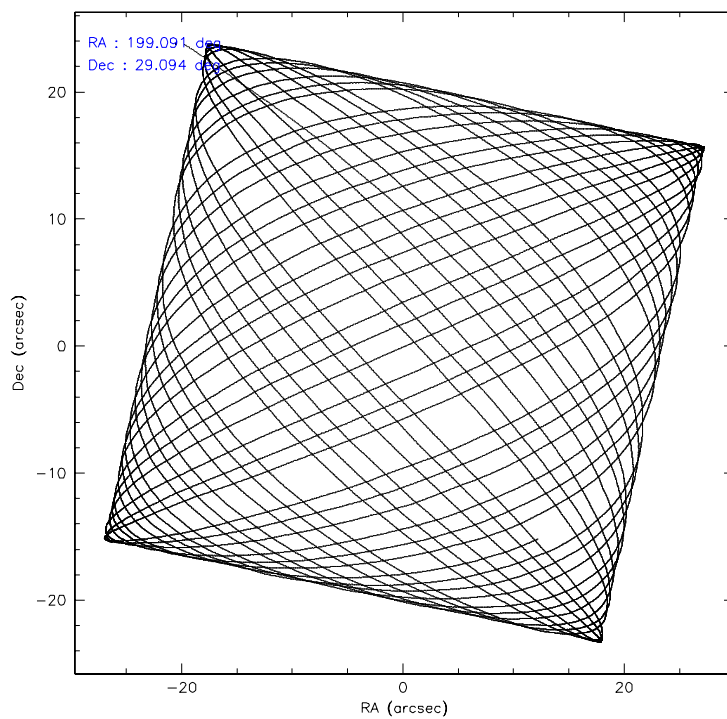
	segment 1	segment 2	segment 3
level 1 events	734796	617778	747938
rejected events	105286	112710	126222
rejected %	14%	18%	16%

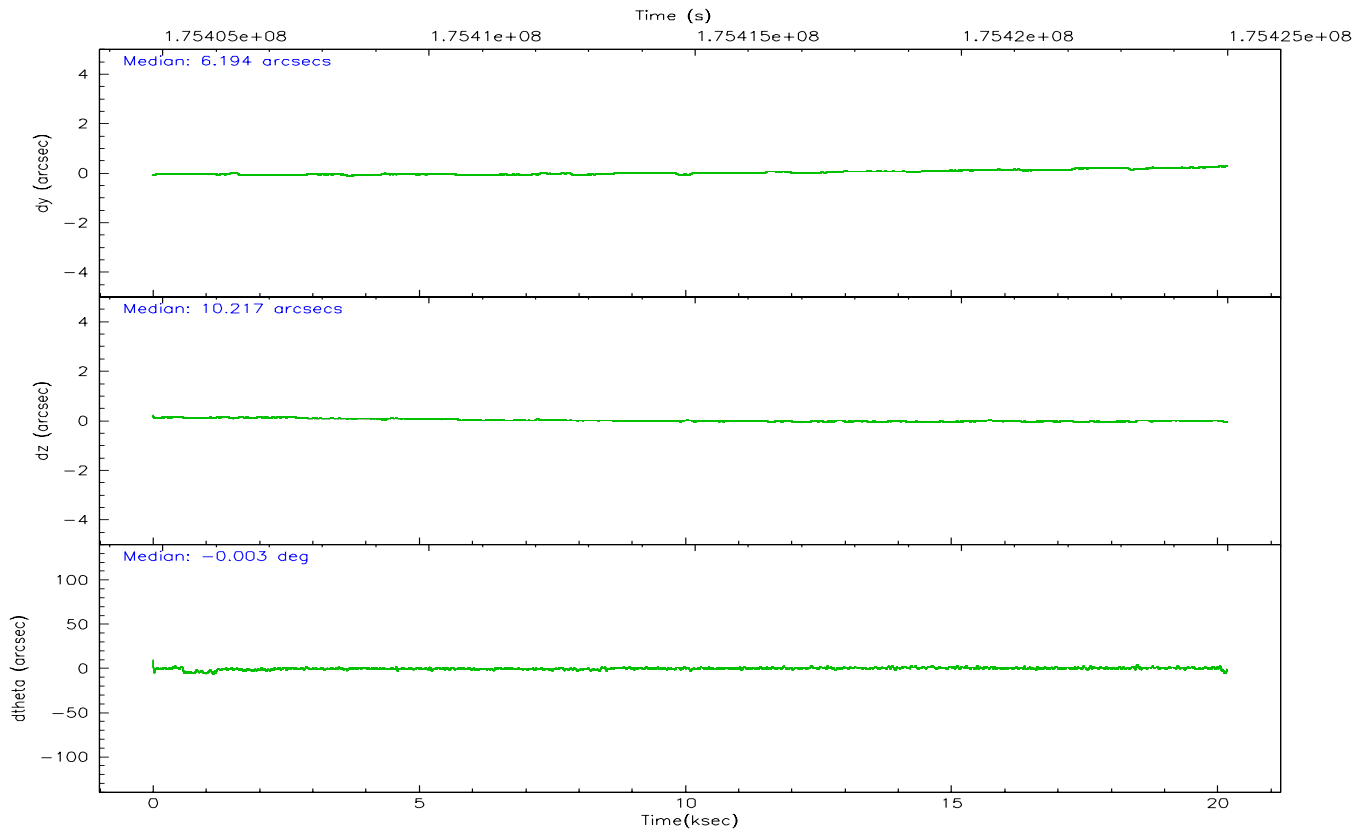
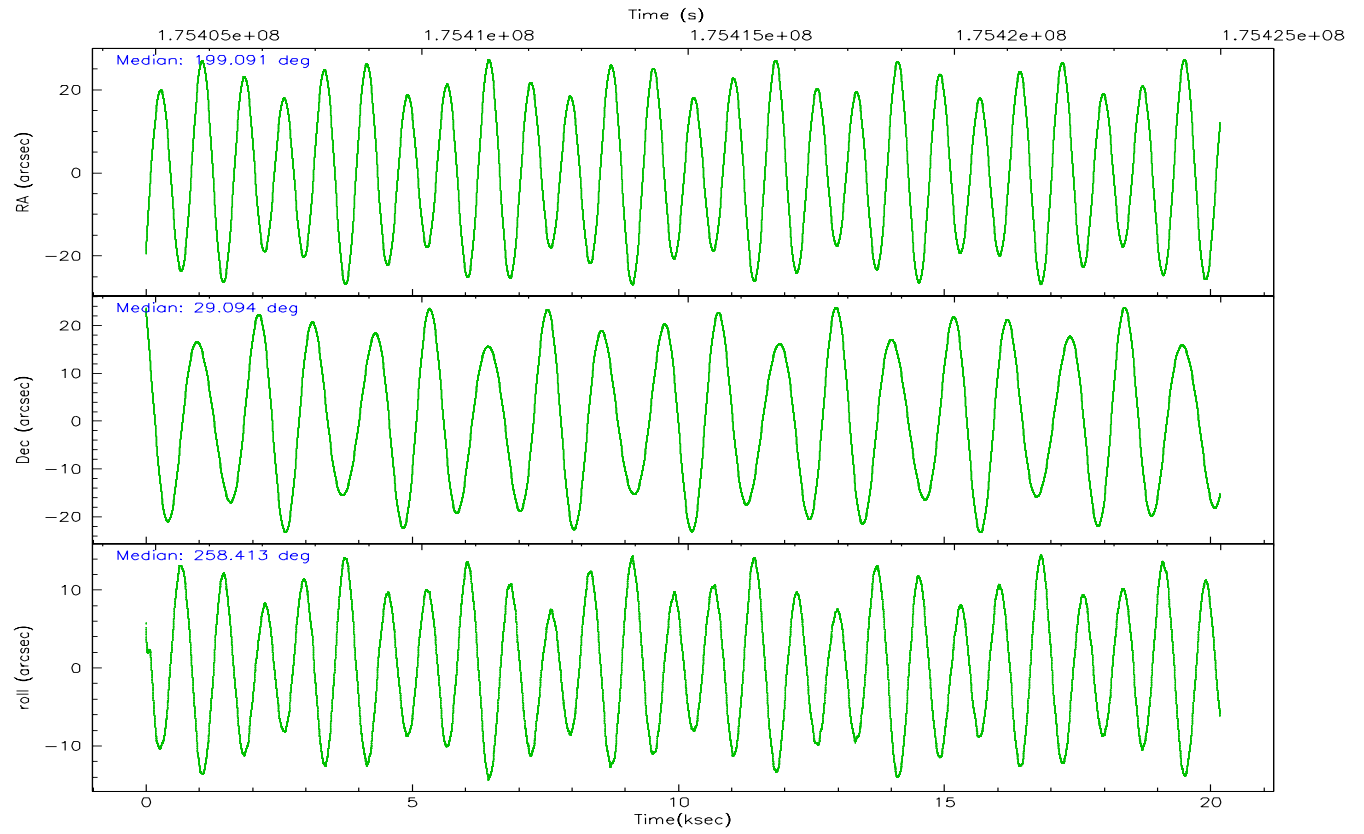
2.2 Compared Parameters

Parameter	Planned	Actual
Instrument	HRC	HRC
Detector	HRC-S	HRC-S
Grating	LETG	LETG
Data mode	OBSERVING	OBSERVING
Observation mode	POINTING	POINTING
Pointing RA	199.078991	199.0908601340448
Pointing Dec	29.121102	29.09440525539192
Pointing Roll	258.356531	258.4180877203976
Window start time	170812864.184000	170812864.184000
Window stop time	175996864.184000	175996864.184000
SIM focus pos (mm)	-1.429586	-1.428180813131781
SIM defocus (mm)	0.1037507710433287	0.1051558262725154
SIM translation stage pos (mm)	250.455976	250.466033080201
SIM translation stage offset (mm)	0	-0.01005468664627074
Observation start time	175404993.184000	175404283.64954
Observation start date	2003-07-24T03:35:29	2003-07-24T03:24:43
Observation end time	175424993.184000	175425163.41293
Observation end date	2003-07-24T09:08:49	2003-07-24T09:12:43

Parameter	Planned	Actual
Obspar format version number	6	6
Obspar file type	PREDICTED	ACTUAL
Obspar update status	NONE	UPDATED

2.3 Aspect



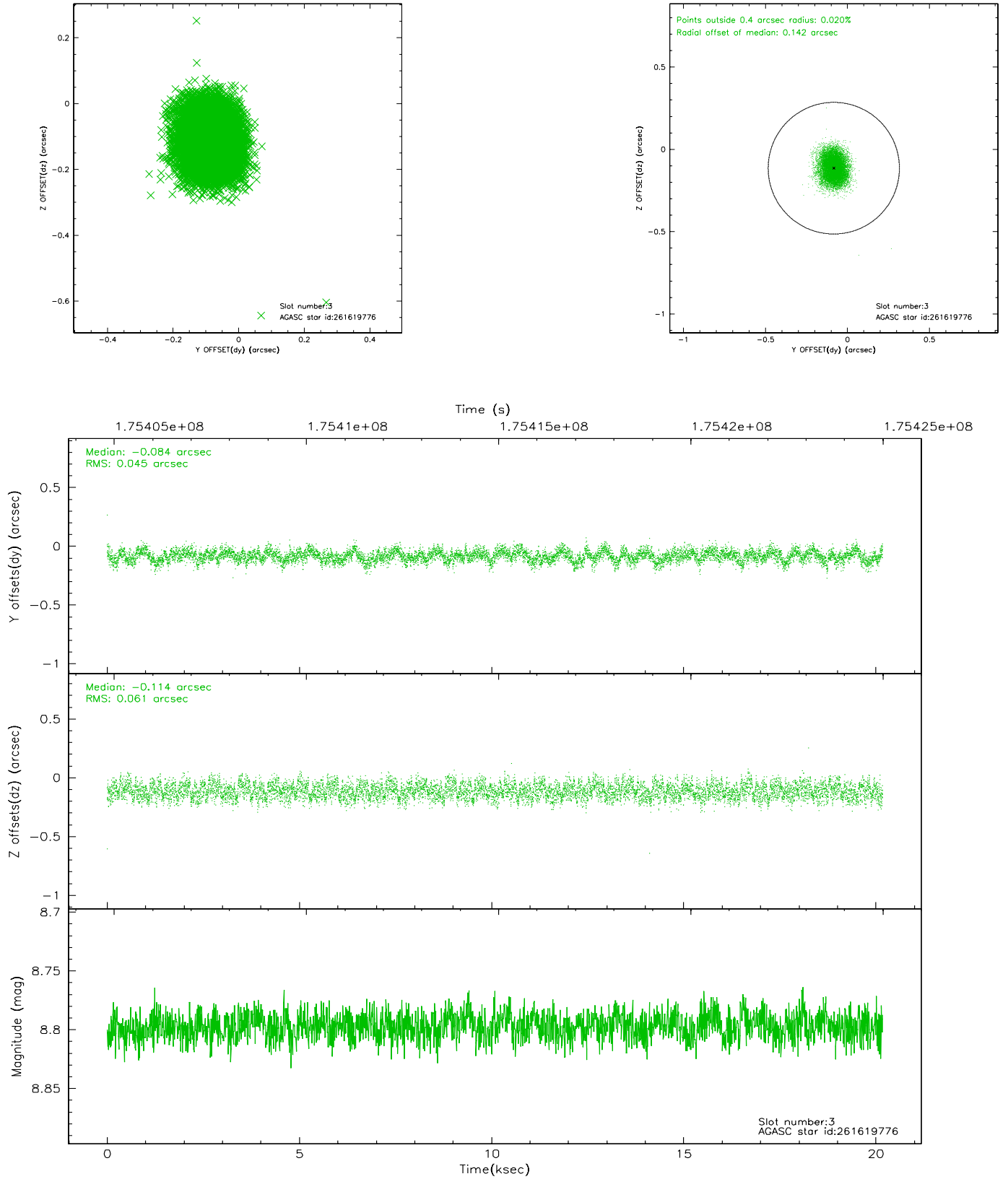


Slot Statistics

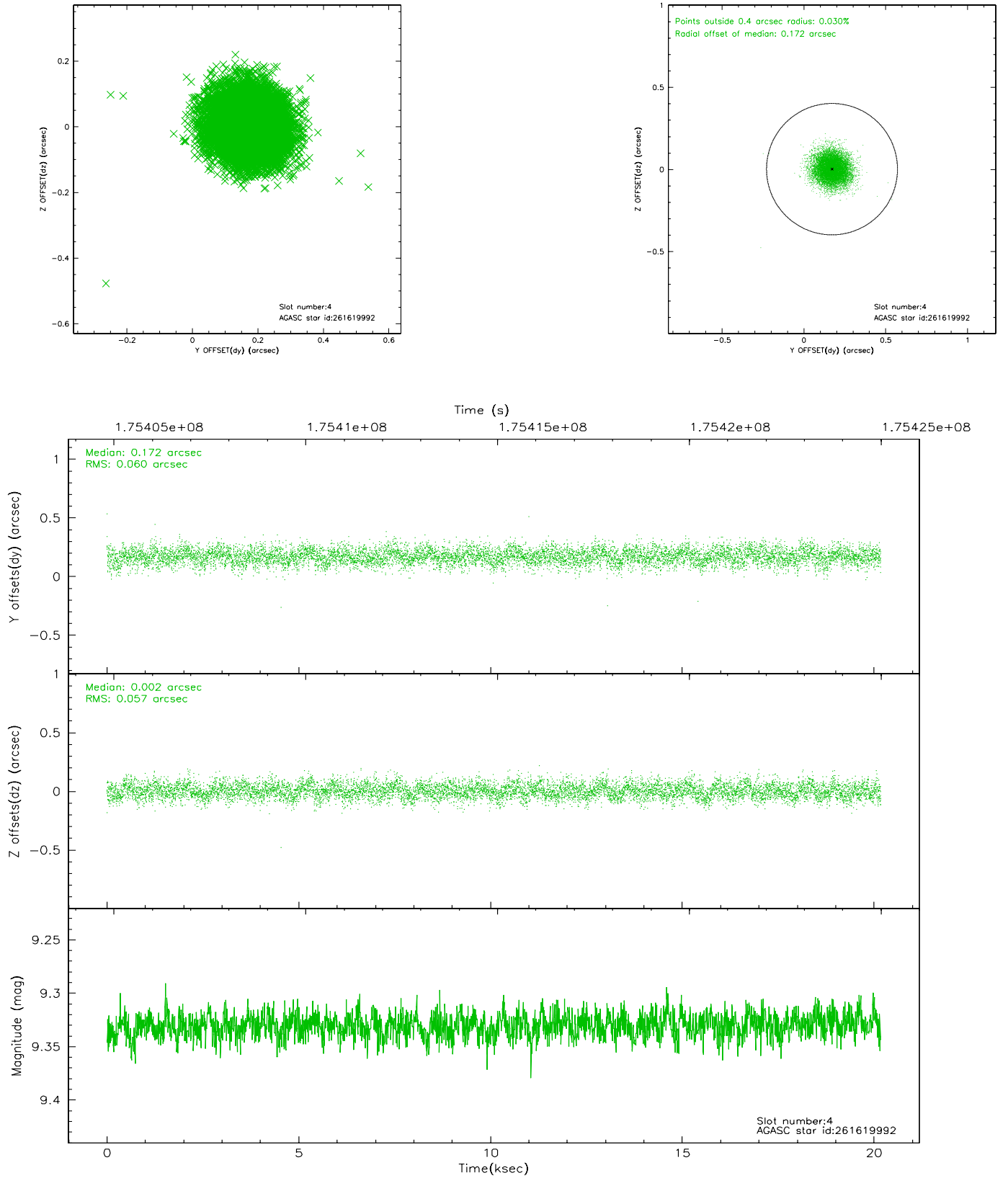
slot	status	id	mag	n_pts	med_dy	med_dz	dr1	dr2	ra	dec	mean_y	mean_z
0	FID	HRC-S-1	6.99	4922	0.105	-0.191	0.007	0.011	0.000000	0.000000	-1160.38	-458.96
1	FID	HRC-S-3	7.00	4921	0.138	-0.017	0.010	0.017	0.000000	0.000000	-1163.30	570.65
2	FID	HRC-S-4	6.95	4921	0.144	-0.089	0.008	0.014	0.000000	0.000000	1237.69	573.34
3	GUIDE	261619776	8.80	9842	-0.084	-0.114	0.082	0.128	198.654383	29.401174	-720.88	-1508.13
4	GUIDE	261619992	9.33	9841	0.172	0.002	0.088	0.142	198.395553	28.647634	2099.46	-1771.93
5	GUIDE	261623040	9.12	9840	-0.171	0.001	0.078	0.127	198.792686	29.757643	-2064.65	-1339.36
6	GUIDE	261623624	9.13	9763	0.150	0.126	0.076	0.123	199.611555	28.454113	2007.91	2135.05
7	GUIDE	261629720	8.10	9844	-0.066	-0.017	0.062	0.100	199.236176	29.044452	170.28	540.48

2.4 Star Slots

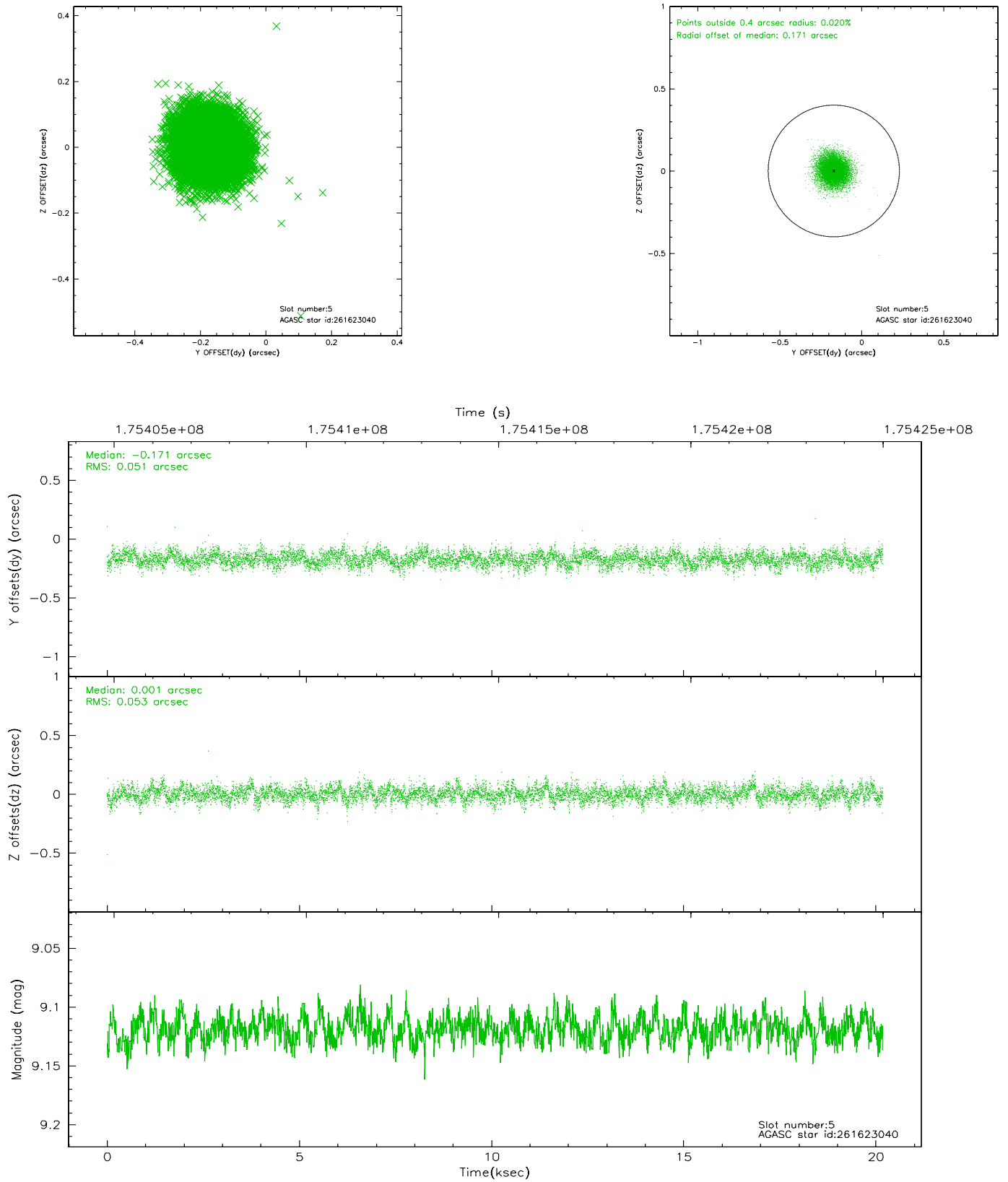
2.4.1 Slot 3



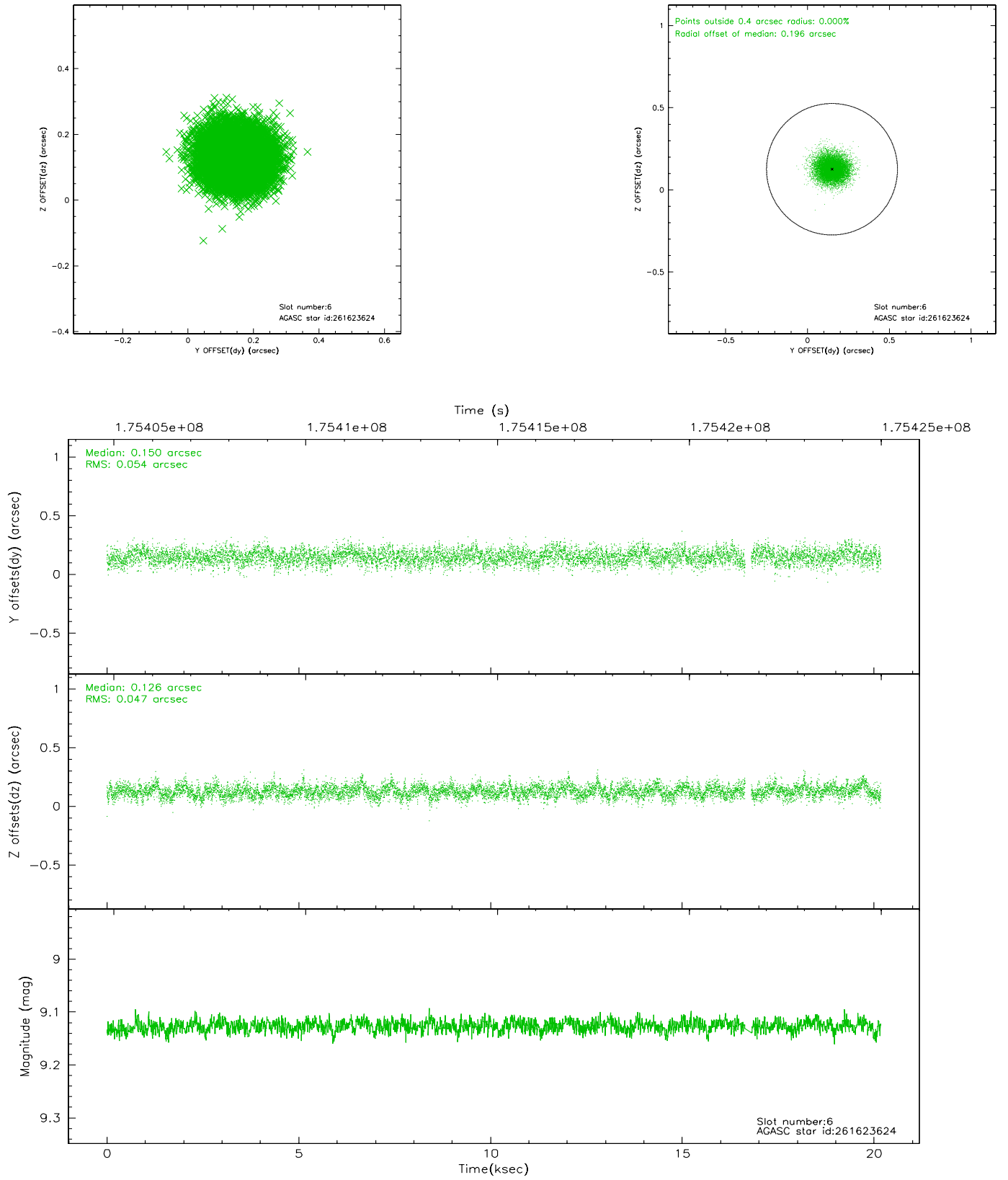
2.4.2 Slot 4



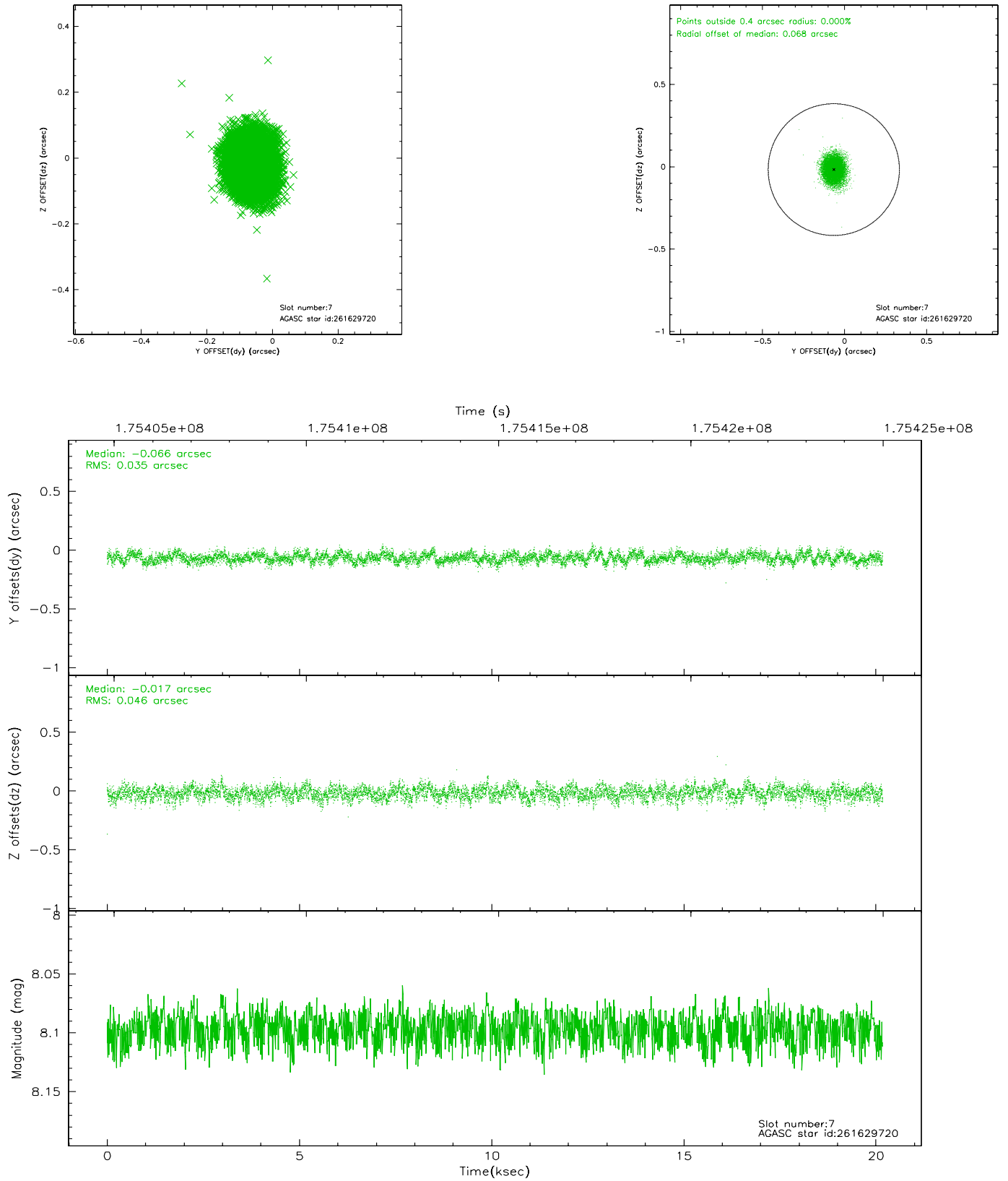
2.4.3 Slot 5



2.4.4 Slot 6

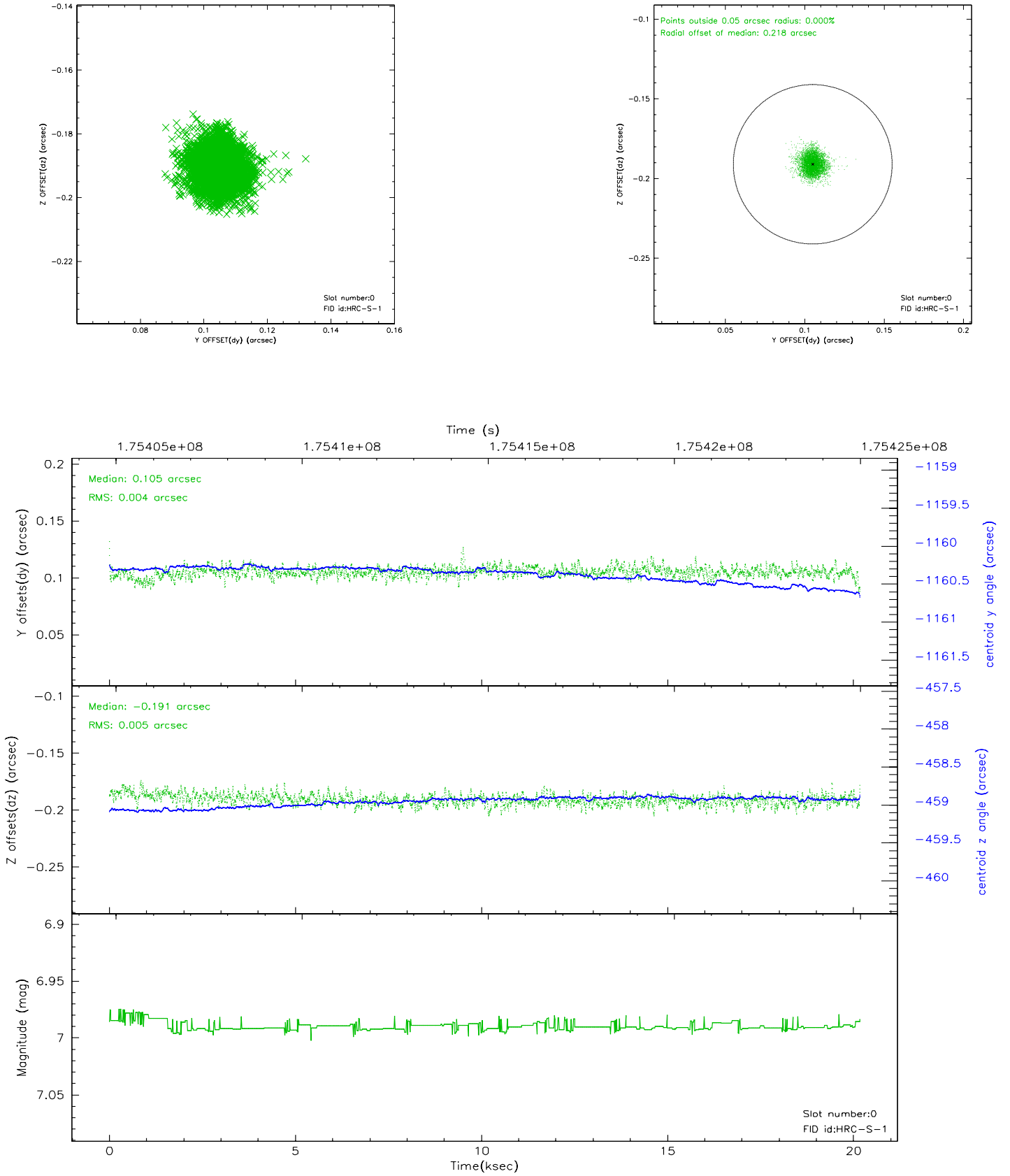


2.4.5 Slot 7

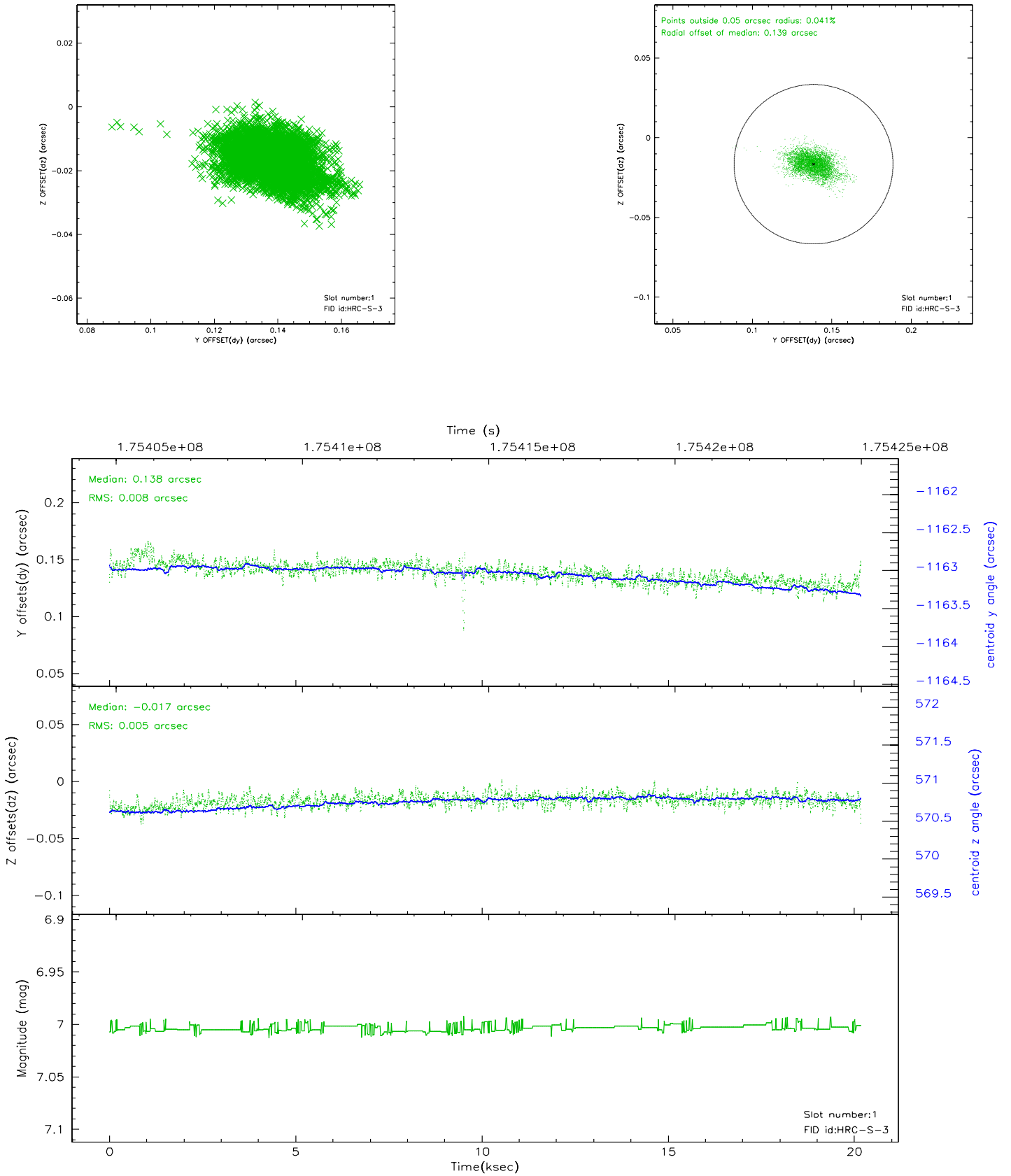


2.5 FID Slots

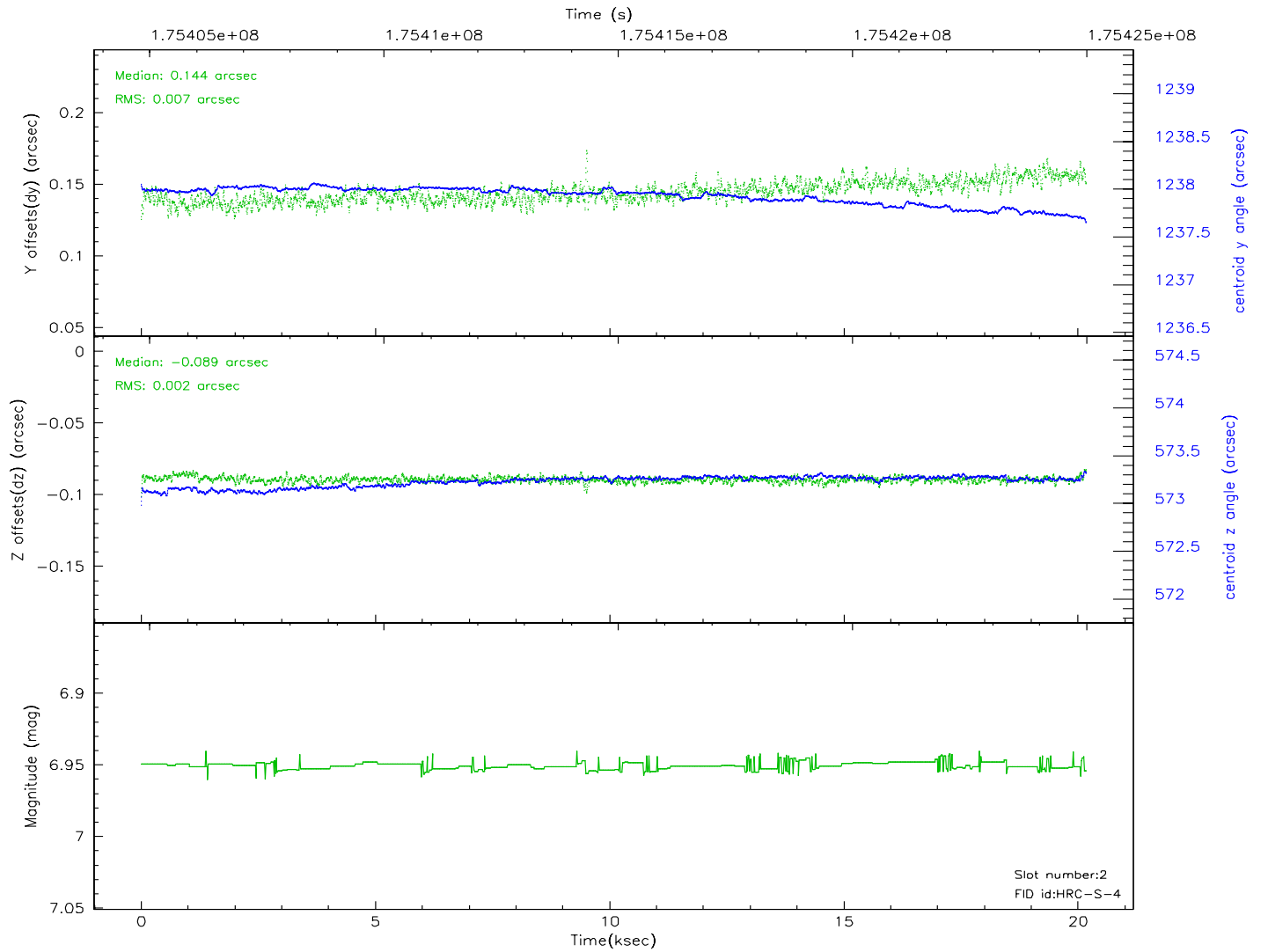
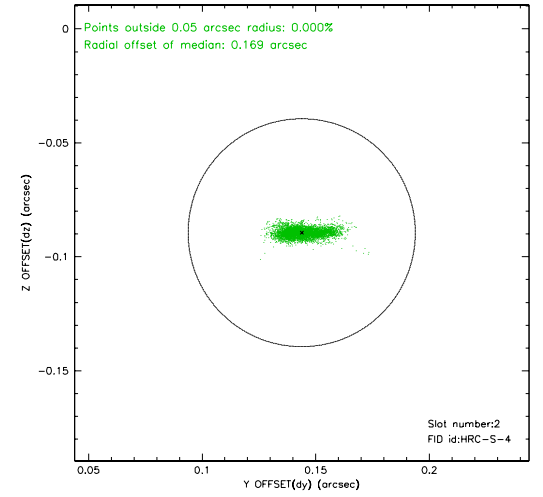
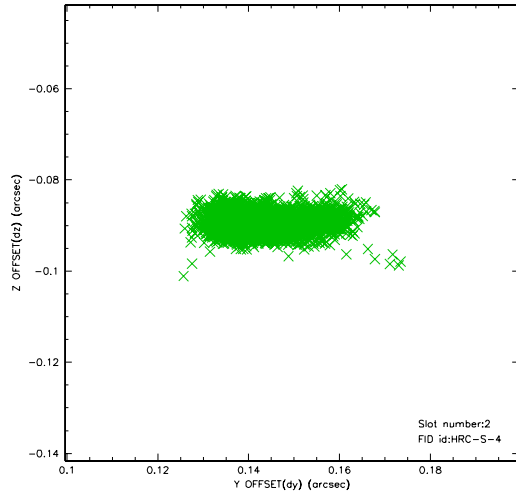
2.5.1 Slot 0



2.5.2 Slot 1

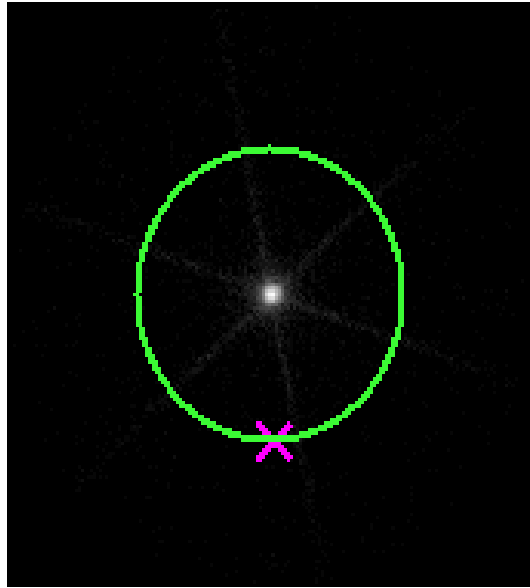


2.5.3 Slot 2



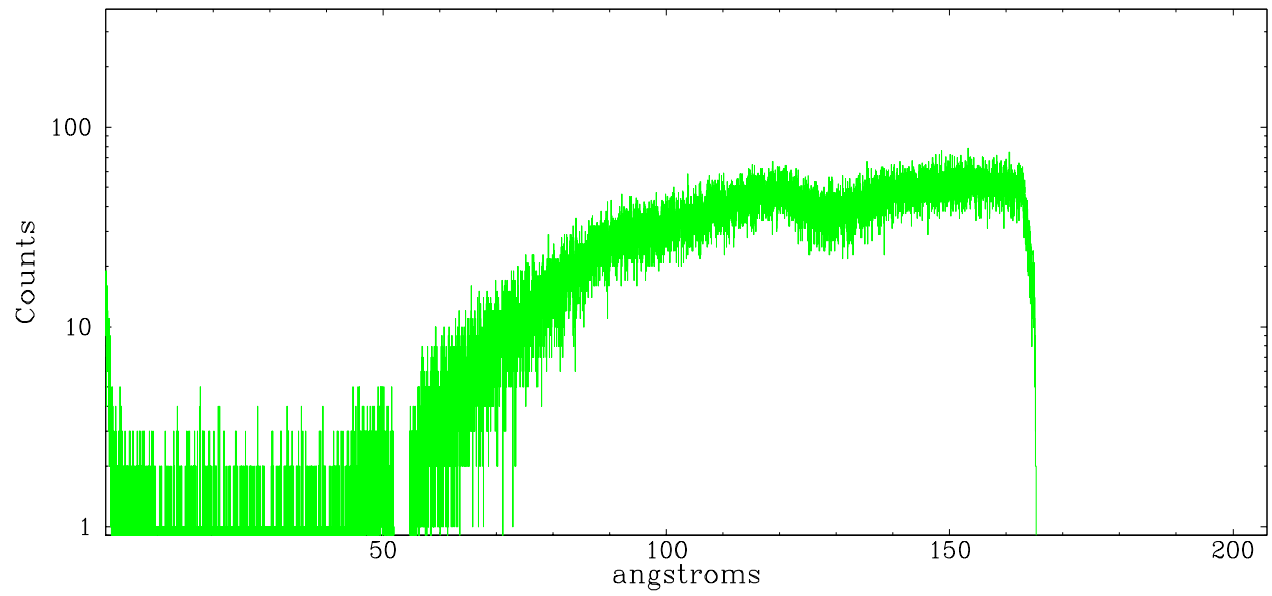
3 Gratings

3.1 LETG Arm

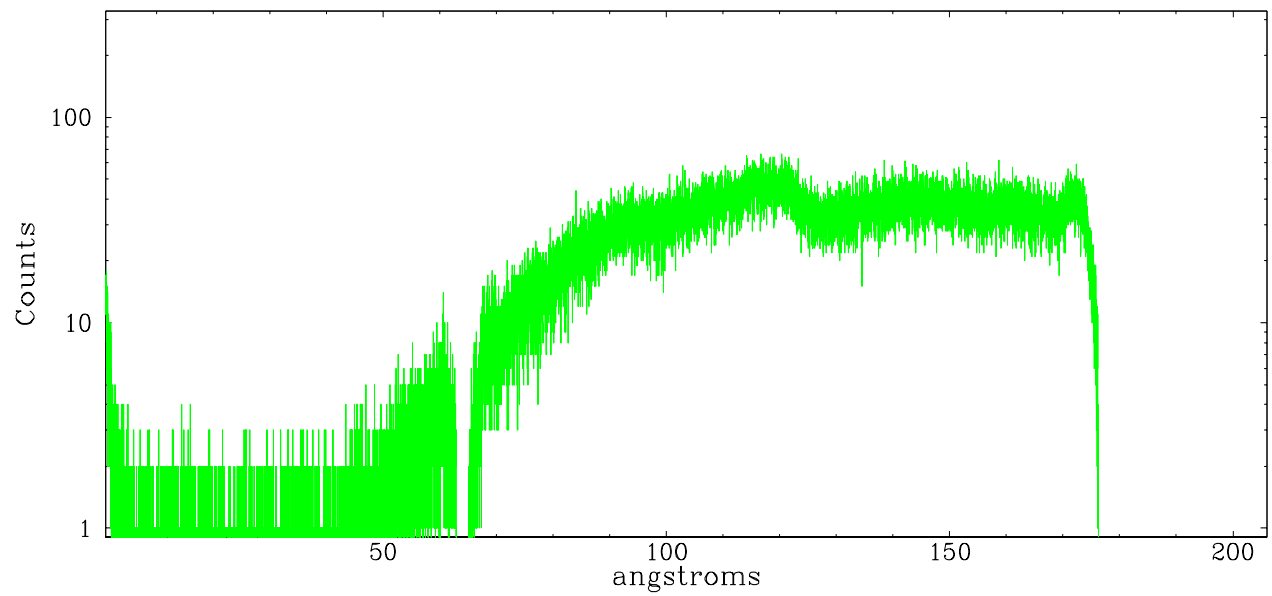


LETG Zero Order

leg order -1



leg order +1



A Summary

A.1 Status

V&V Scientist	Jen Lauer
V&V Date (YYYY-MM-DD)	2006.07.12
V&V Edition	1
V&V Disposition and Status	OK
V&V Charge Time	20.179

A.2 Comments

Window constraint met.