

V&V Reference Report

L2 ASCDS Version : 7.6.9

Observation 3676 - L2 Version 001
Chandra X-Ray Center

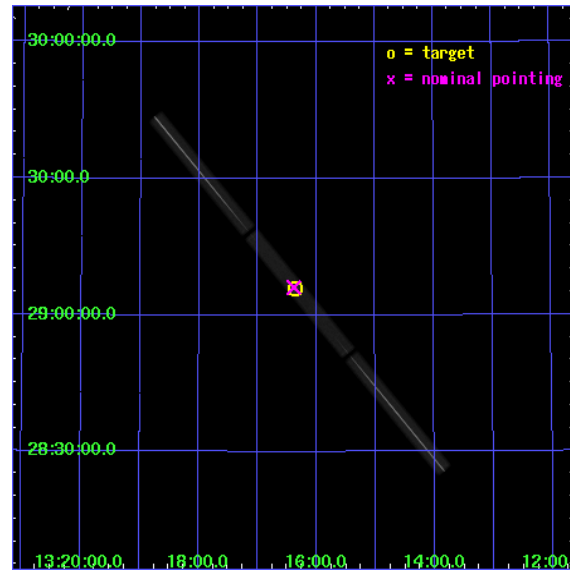
L2 Processing Date : Oct 13 2006

Contents

1	Front	2
2	OBI	3
2.1	OBI	3
2.1.1	Images	3
2.1.2	Parameters	4
2.1.3	Events	4
2.2	Compared Parameters	5
2.3	Aspect	6
2.4	Star Slots	9
2.4.1	Slot 3	9
2.4.2	Slot 4	10
2.4.3	Slot 5	11
2.4.4	Slot 6	12
2.4.5	Slot 7	13
2.5	FID Slots	14
2.5.1	Slot 0	14
2.5.2	Slot 1	15
2.5.3	Slot 2	16
3	Gratings	17
3.1	LETG Arm	17
A	Summary	19
A.1	Status	19
A.2	Comments	19

1 Front

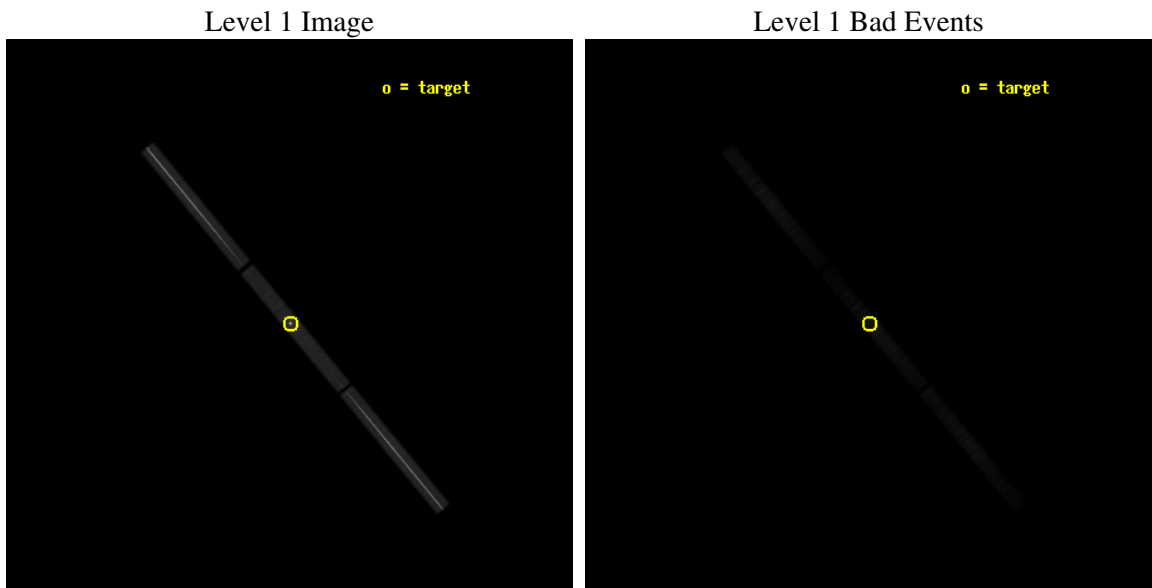
seq_num	290230
obs_id	3676
title	AO4 CALIBRATION OBSERVATIONS OF HZ43
observer	Dr. CXC Calibration
object	HZ43
ra_targ	199.092083
dec_targ	29.099
ra_nom	199.09555657927
dec_nom	29.102472201946
roll_nom	50.228876879927
revision	2
ontime	19981.350833476
livetime	19804.764787426
l2events	1680770



2 OBI

2.1 OBI

2.1.1 Images



2.1.2 Parameters

obi_num	0
ascdsver	7.6.9
caldsver	3.2.3
date	2006-10-13T20:29:51
revision	2

sched_exp_time	20000.000000
ontime	20063.350836933
l1events	2134315

2.1.3 Events

Level 1 Events

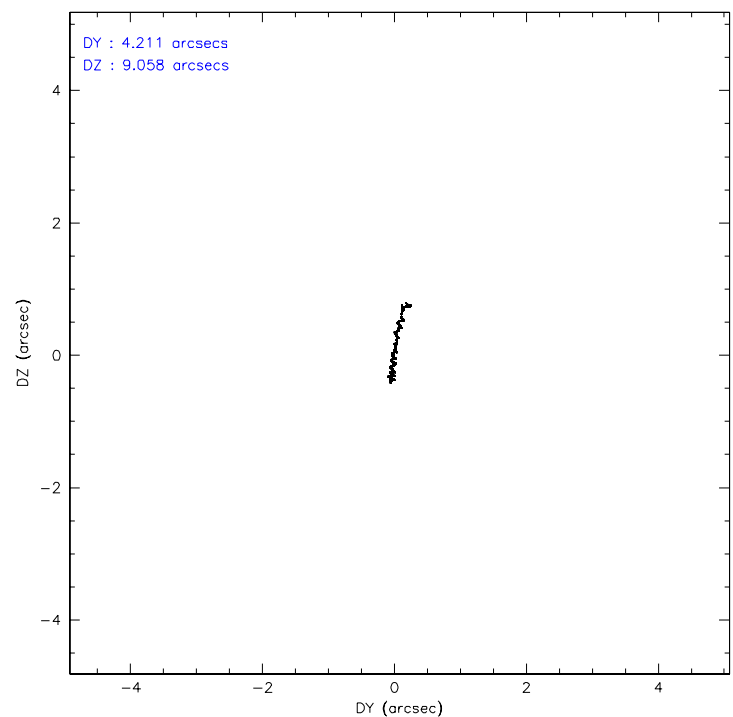
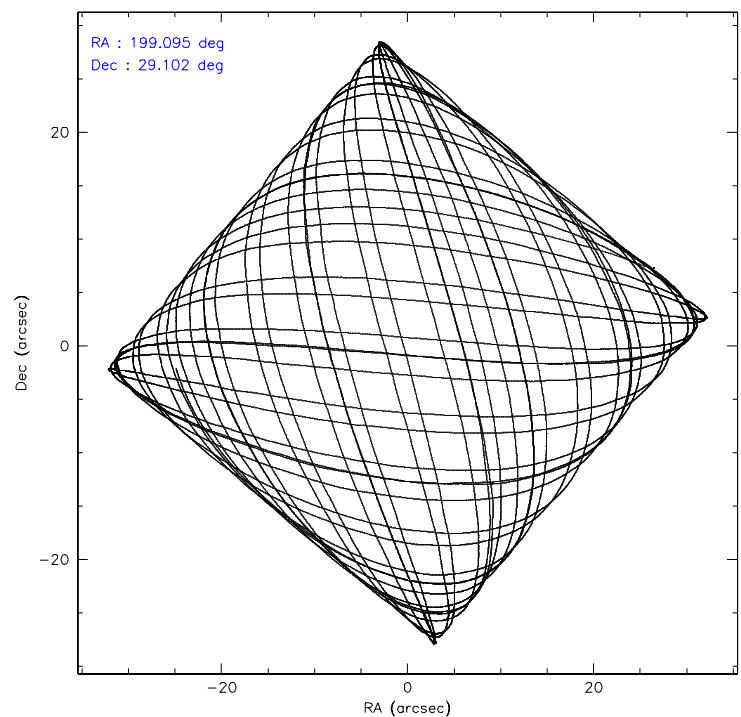
	segment 1	segment 2	segment 3
level 1 events	748561	625587	760167
rejected events	94019	102231	114133
rejected %	12%	16%	15%

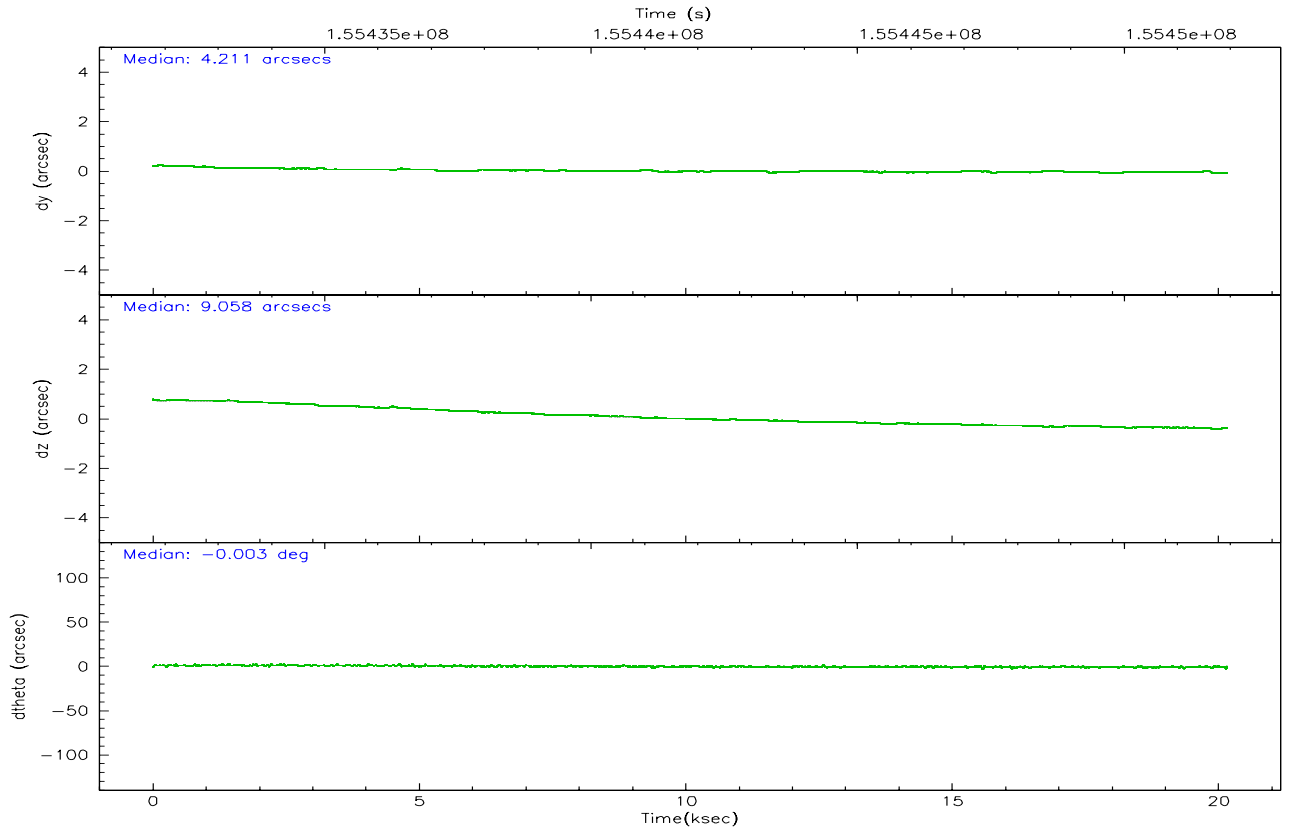
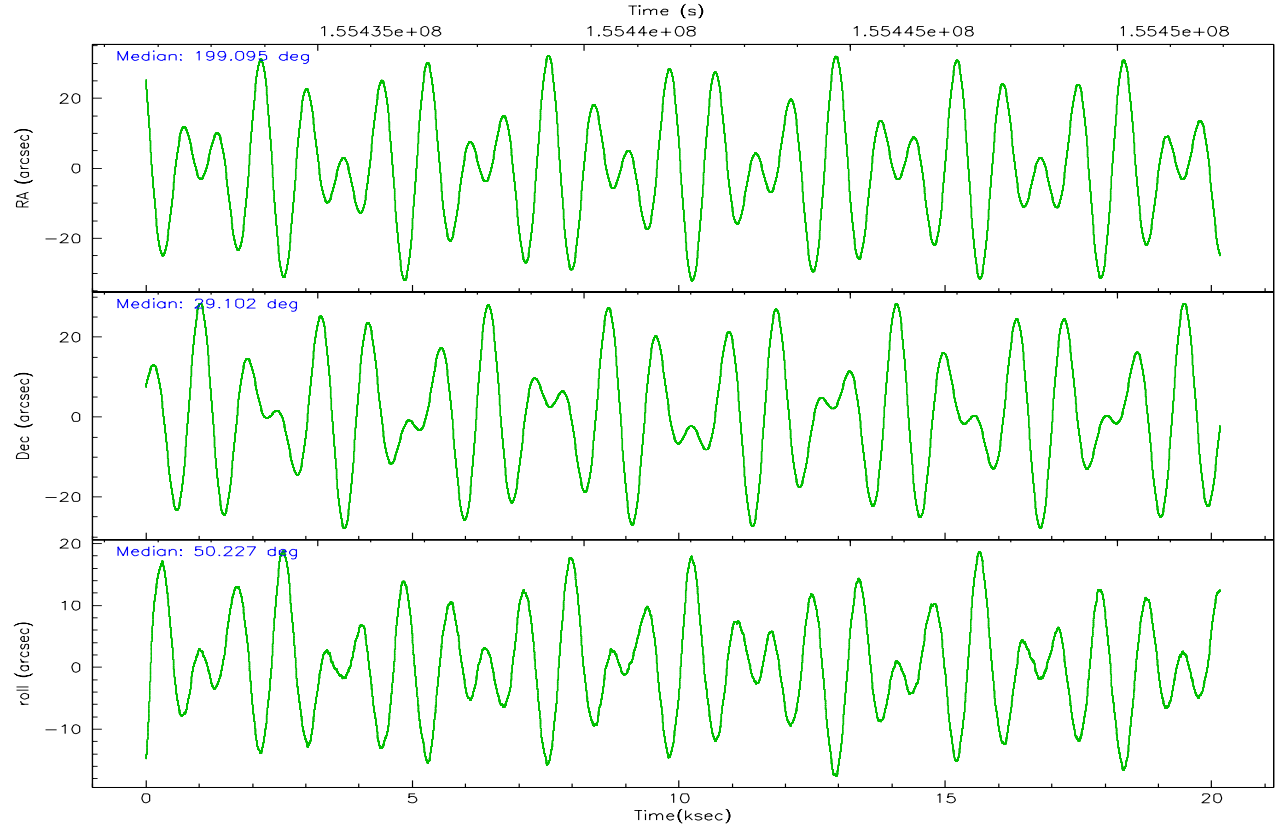
2.2 Compared Parameters

Parameter	Planned	Actual
Instrument	HRC	HRC
Detector	HRC-S	HRC-S
Grating	LETG	LETG
Data mode	OBSERVING	OBSERVING
Observation mode	POINTING	POINTING
Pointing RA	199.091672	199.0955565792676
Pointing Dec	29.074120	29.10247220194554
Pointing Roll	50.163430	50.22887687992738
Window start time	155088064.184000	155088064.184000
Window stop time	160358464.184000	160358464.184000
SIM focus pos (mm)	-1.429586	-1.428180813131781
SIM defocus (mm)	0.1037507710433287	0.1051558262725154
SIM translation stage pos (mm)	250.455976	250.466033080201
SIM translation stage offset (mm)	0	-0.01005468664627074
Observation start time	155431935.184000	155431447.99482
Observation start date	2002-12-04T23:31:11	2002-12-04T23:24:07
Observation end time	155451935.184000	155452765.4332
Observation end date	2002-12-05T05:04:31	2002-12-05T05:19:25

Parameter	Planned	Actual
Obspar format version number	6	6
Obspar file type	PREDICTED	ACTUAL
Obspar update status	NONE	UPDATED

2.3 Aspect



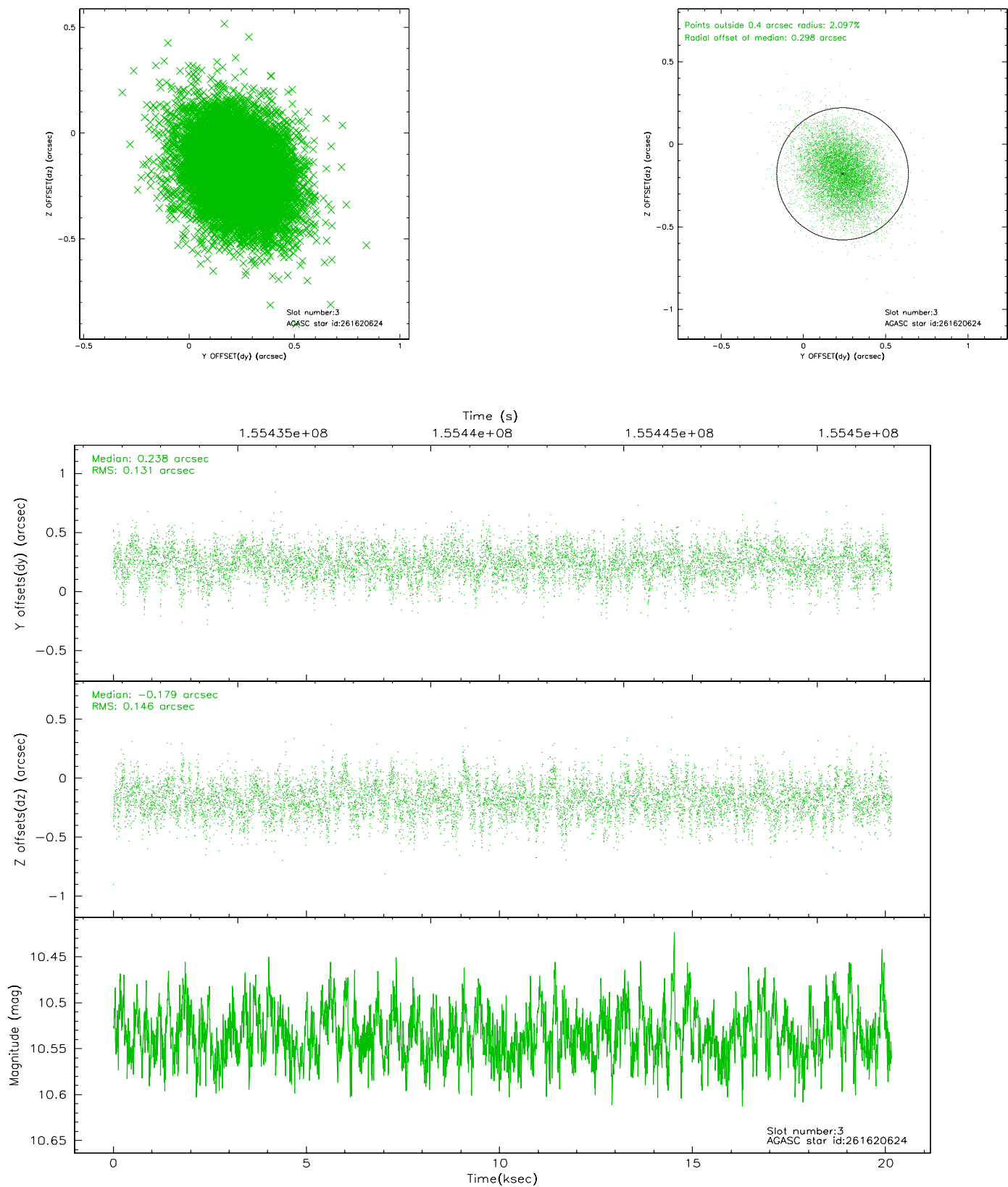


Slot Statistics

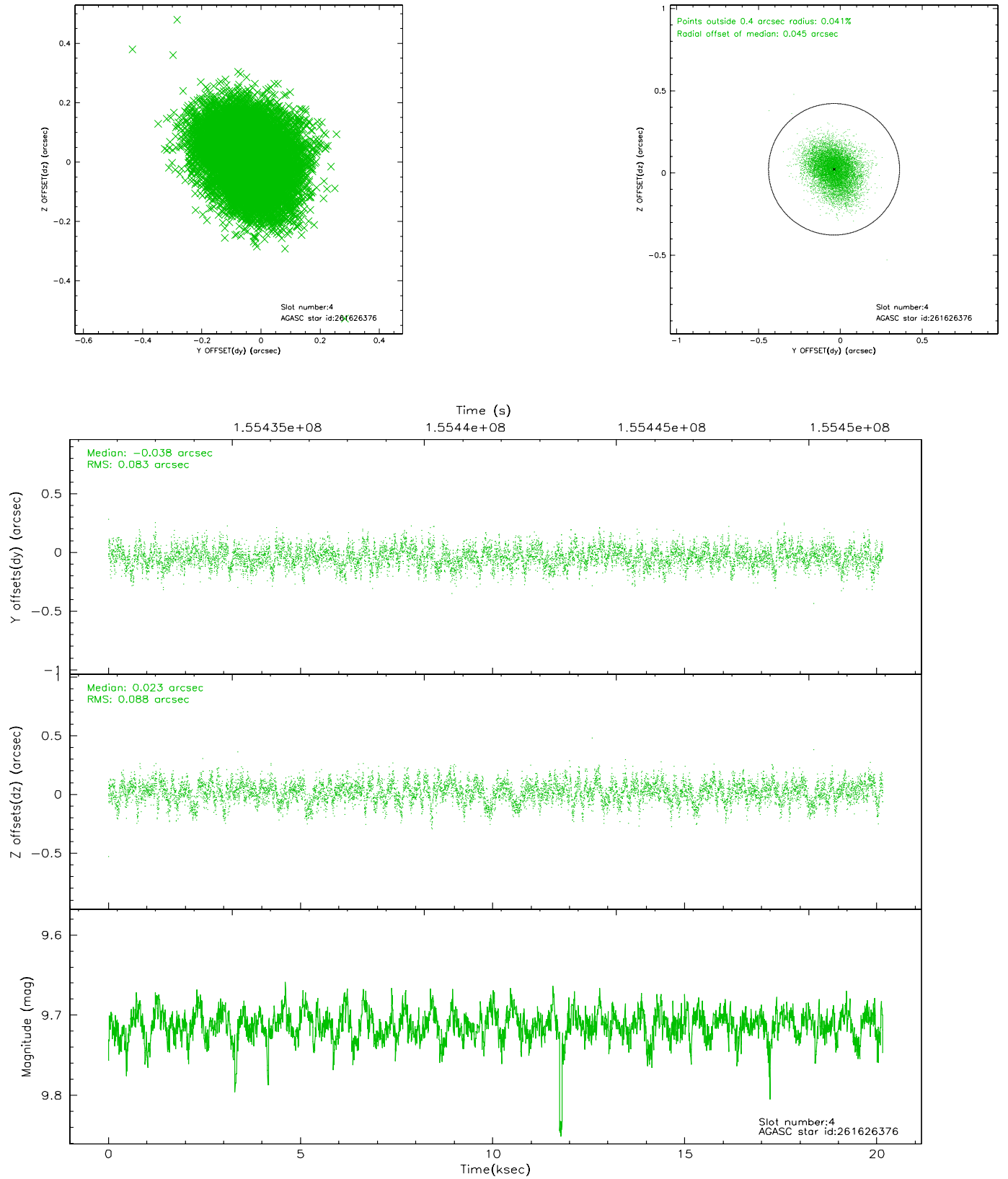
slot	status	id	mag	n_pts	med_dy	med_dz	dr1	dr2	ra	dec	mean_y	mean_z
0	FID	HRC-S-1	7.03	4917	0.170	-0.167	0.018	0.026	0.000000	0.000000	-1158.27	-457.79
1	FID	HRC-S-2	7.02	4917	0.055	-0.085	0.006	0.010	0.000000	0.000000	1241.06	-450.46
2	FID	HRC-S-3	7.04	4917	0.166	-0.050	0.018	0.027	0.000000	0.000000	-1160.73	571.76
3	GUIDE	261620624	10.54	9823	0.238	-0.179	0.206	0.343	198.207504	28.942848	-2138.12	1842.07
4	GUIDE	261626376	9.71	9822	-0.038	0.023	0.129	0.209	198.947288	29.347445	466.20	978.20
5	GUIDE	261629720	8.10	9832	-0.045	0.206	0.063	0.103	199.236176	29.044452	210.54	-417.68
6	GUIDE	261623040	9.13	9833	-0.202	-0.219	0.105	0.169	198.792686	29.757643	1292.60	2293.88
7	GUIDE	261621400	6.97	9833	0.055	0.175	0.068	0.106	198.901600	28.741982	-1300.98	-305.04

2.4 Star Slots

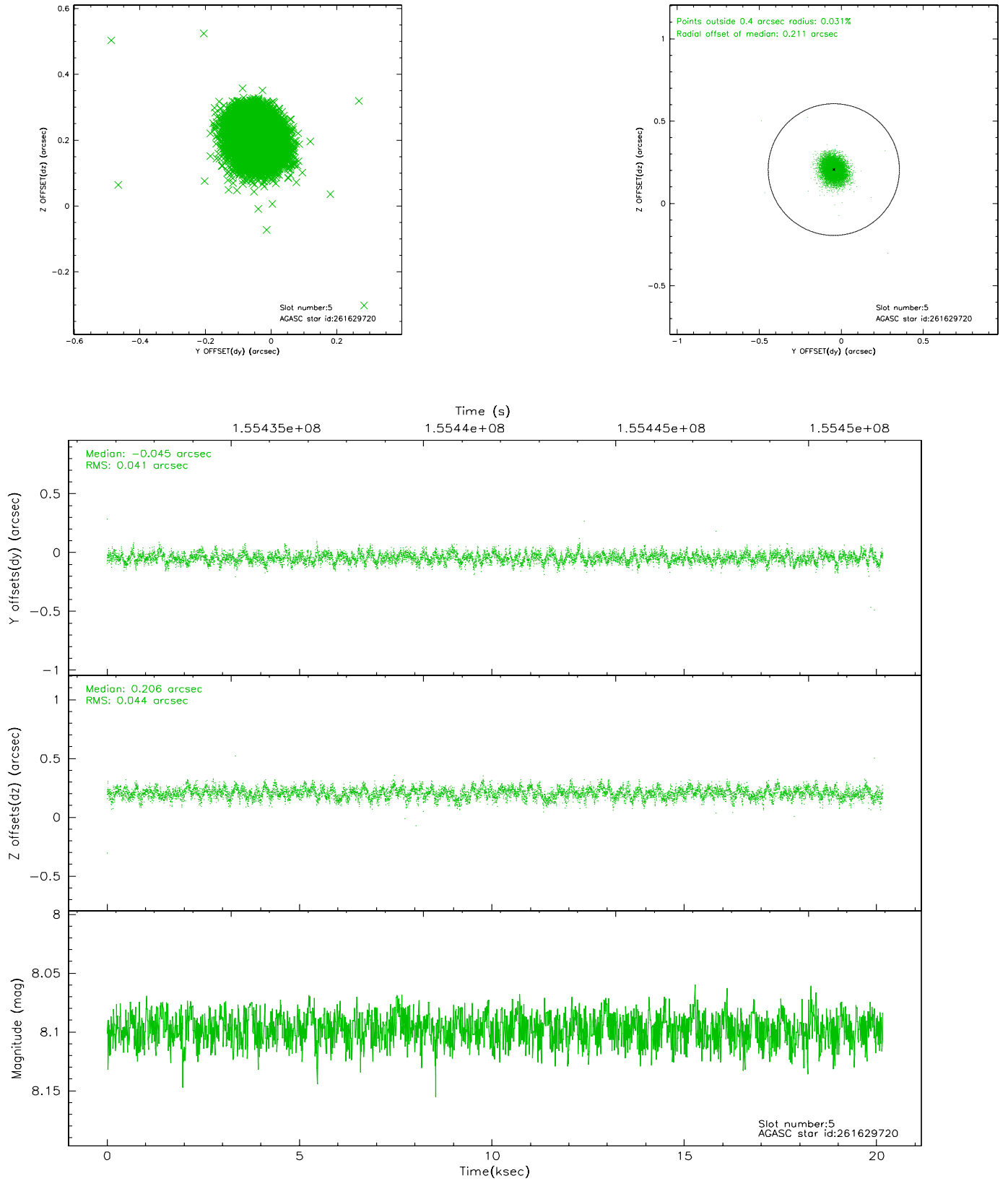
2.4.1 Slot 3



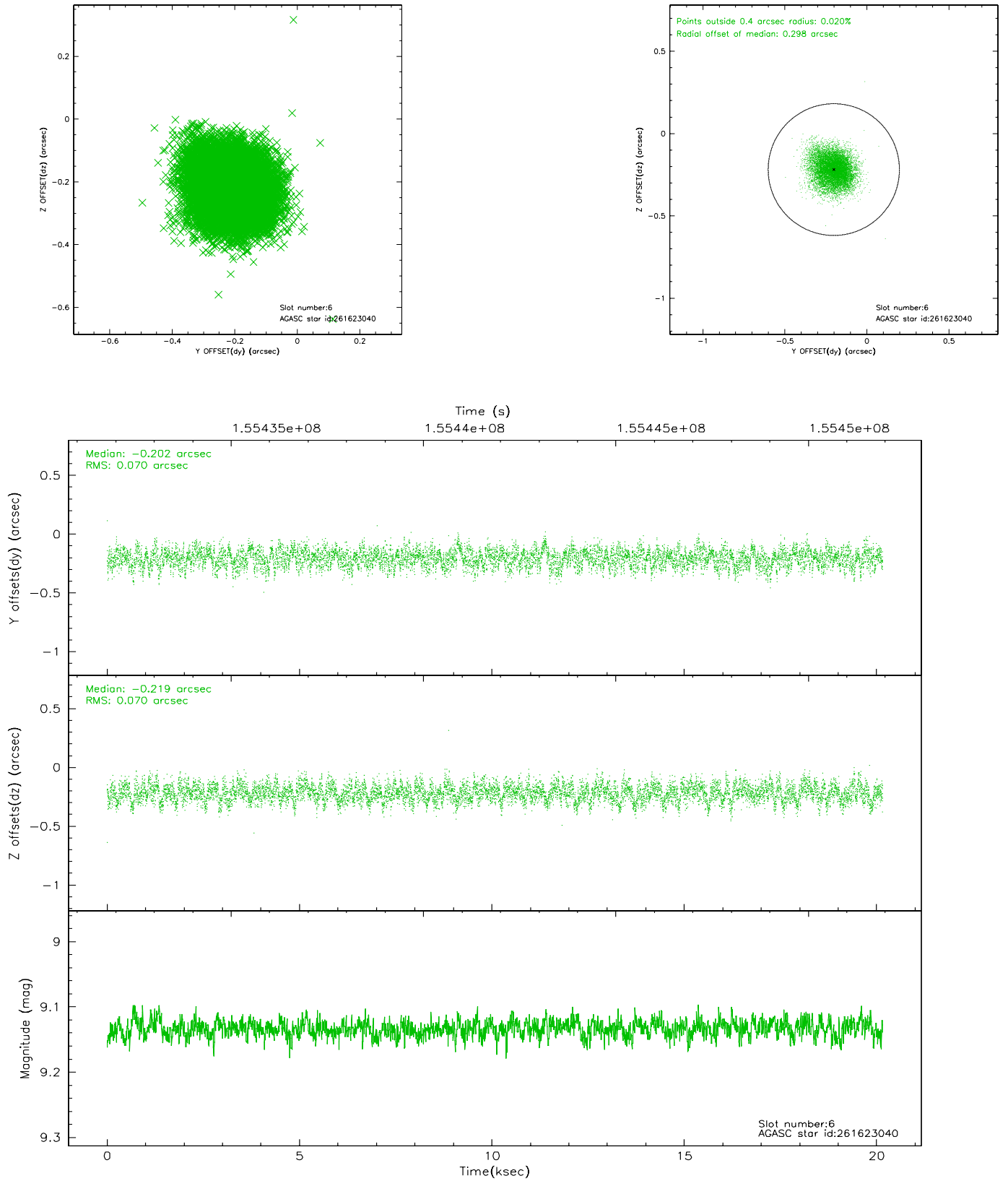
2.4.2 Slot 4



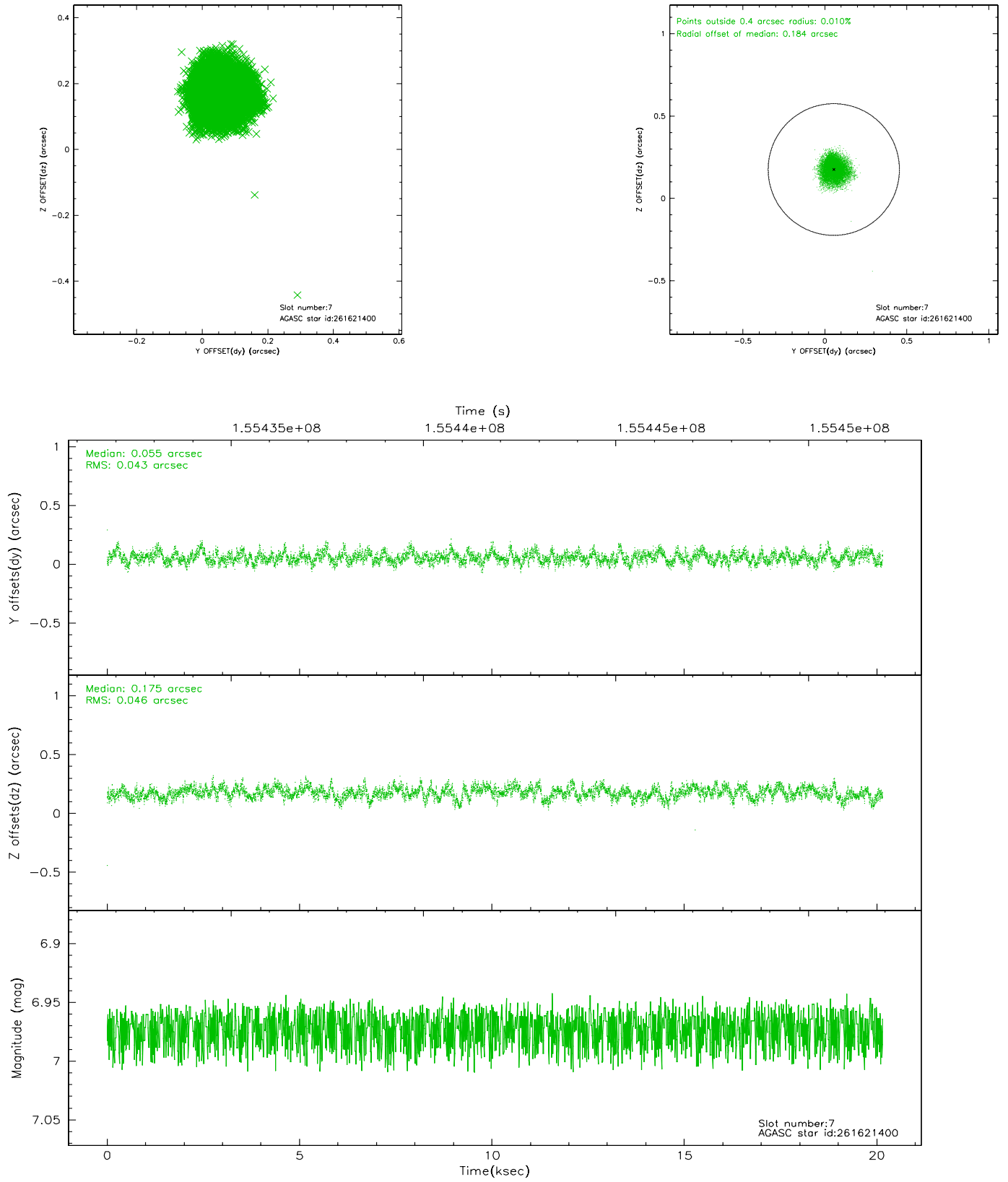
2.4.3 Slot 5



2.4.4 Slot 6

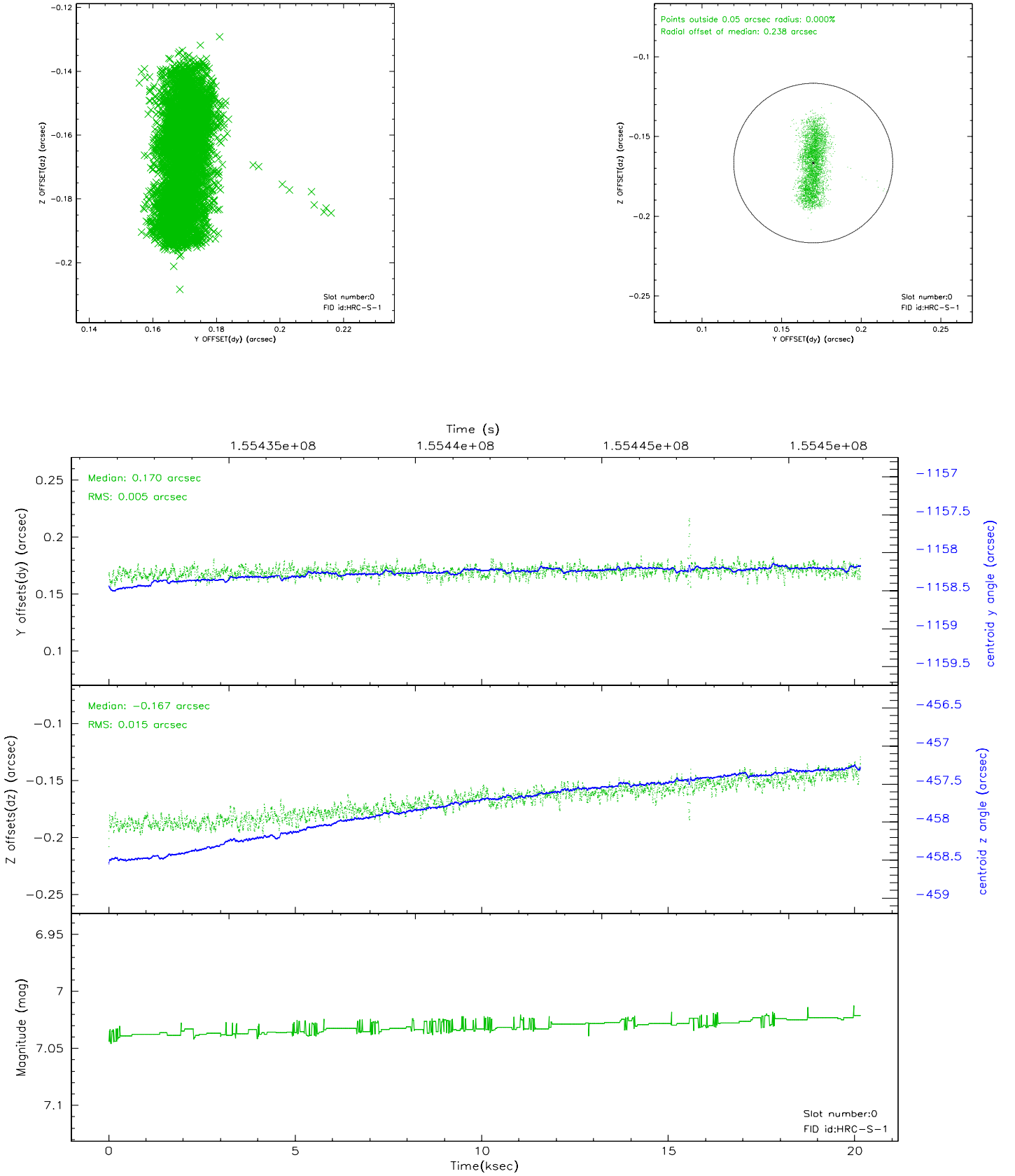


2.4.5 Slot 7

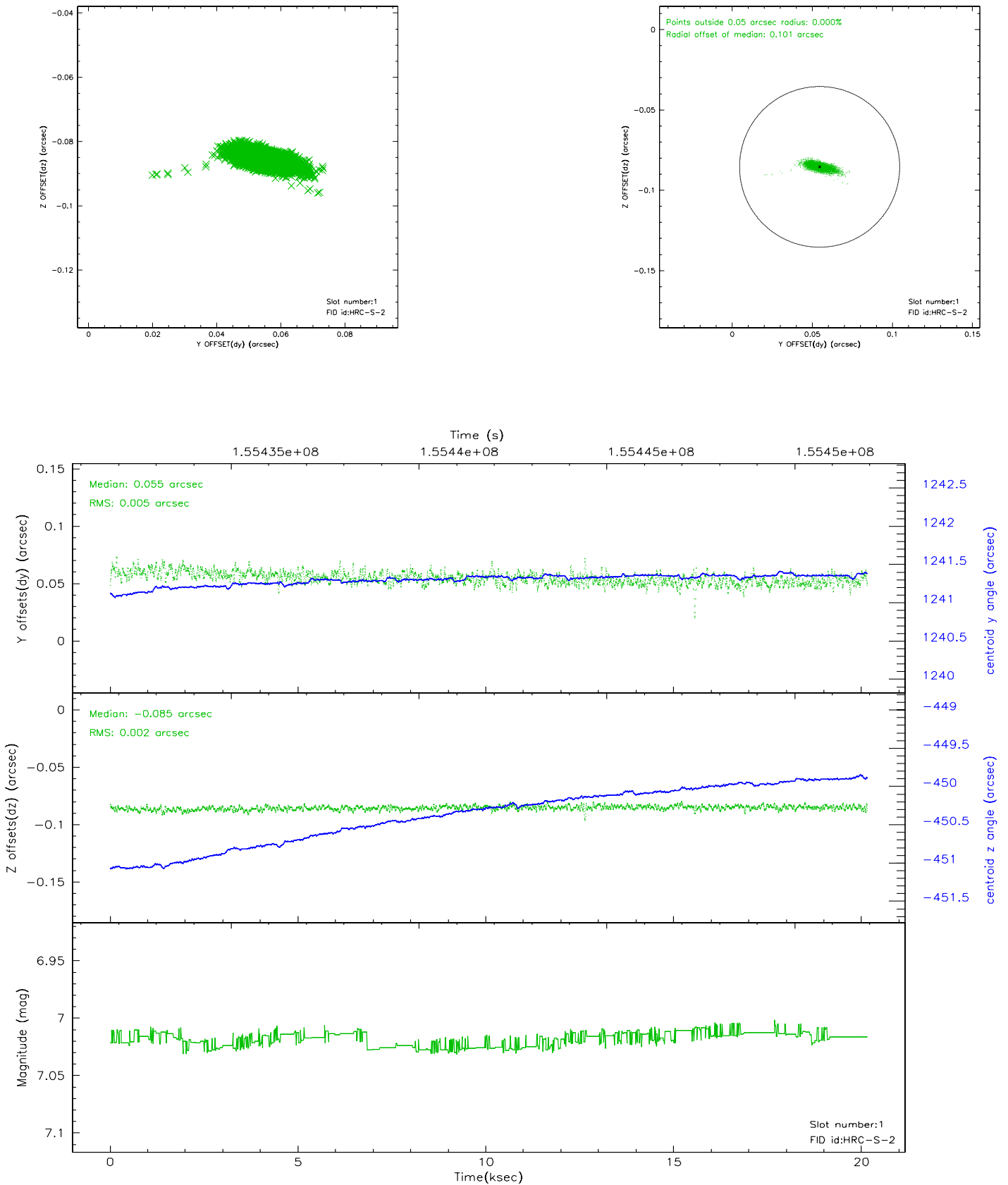


2.5 FID Slots

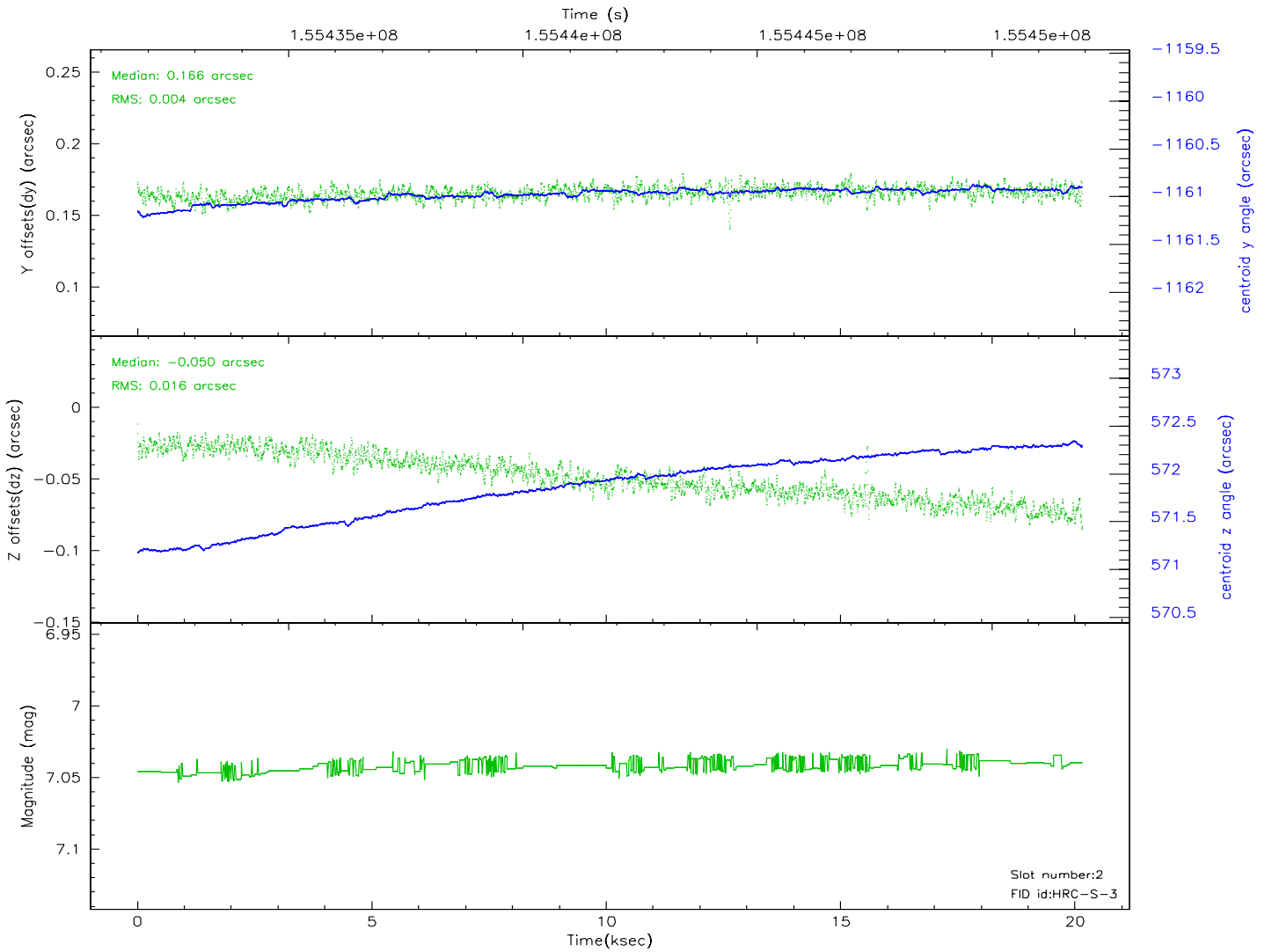
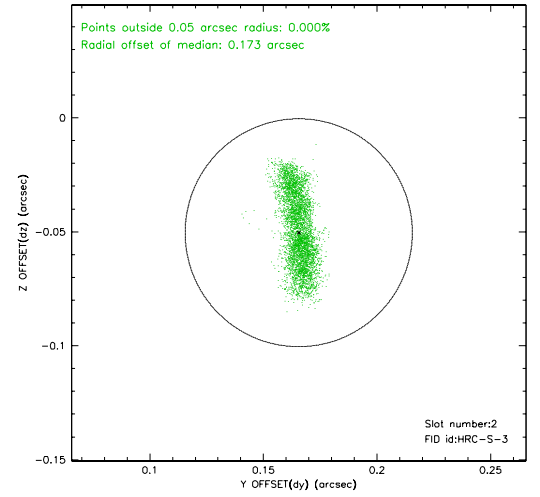
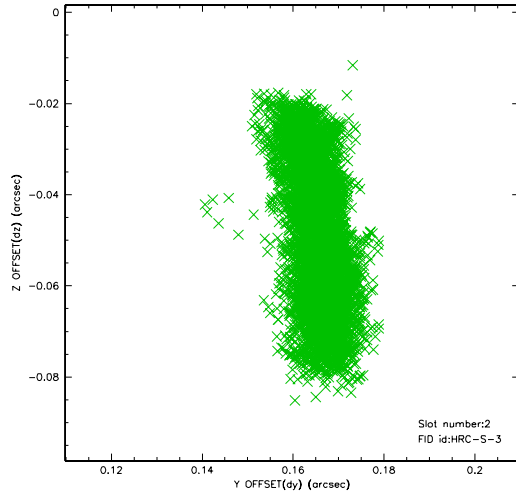
2.5.1 Slot 0



2.5.2 Slot 1

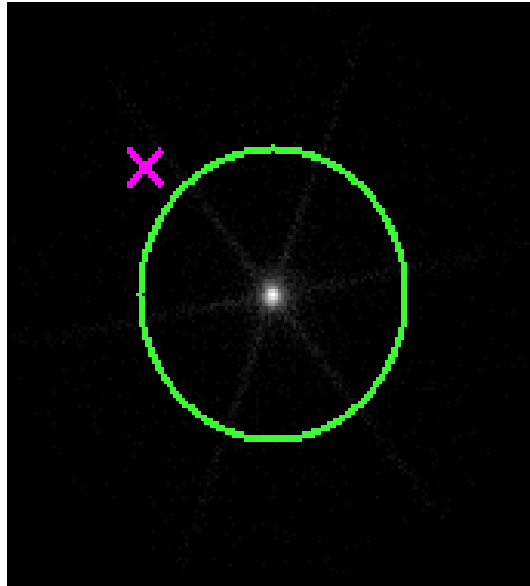


2.5.3 Slot 2



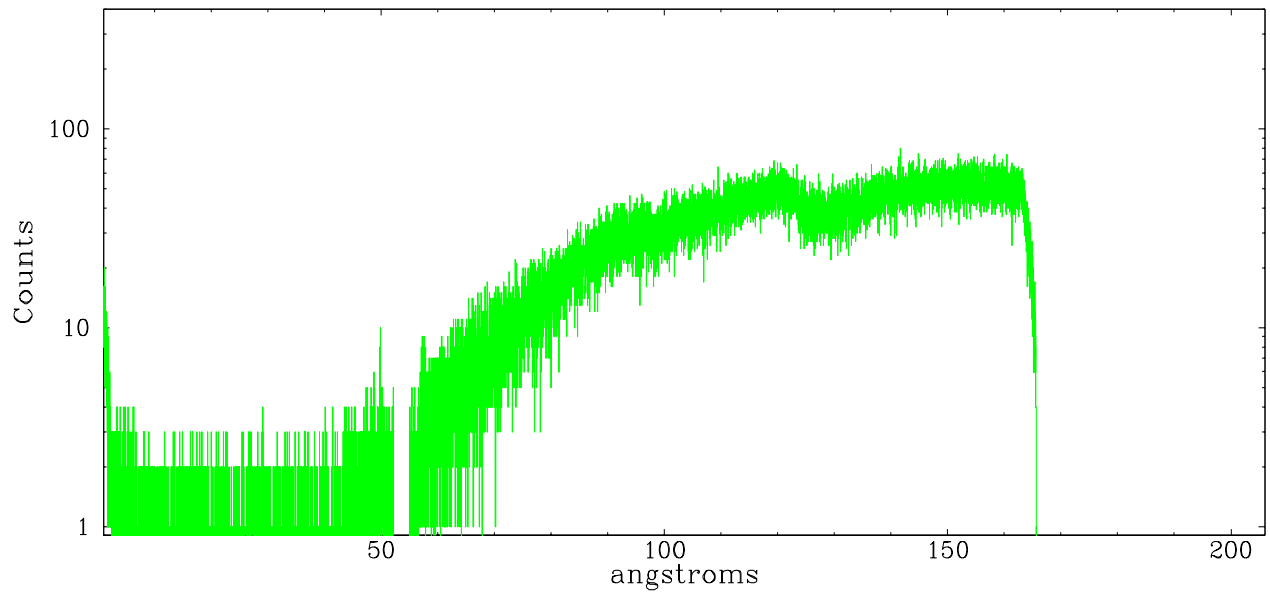
3 Gratings

3.1 LETG Arm

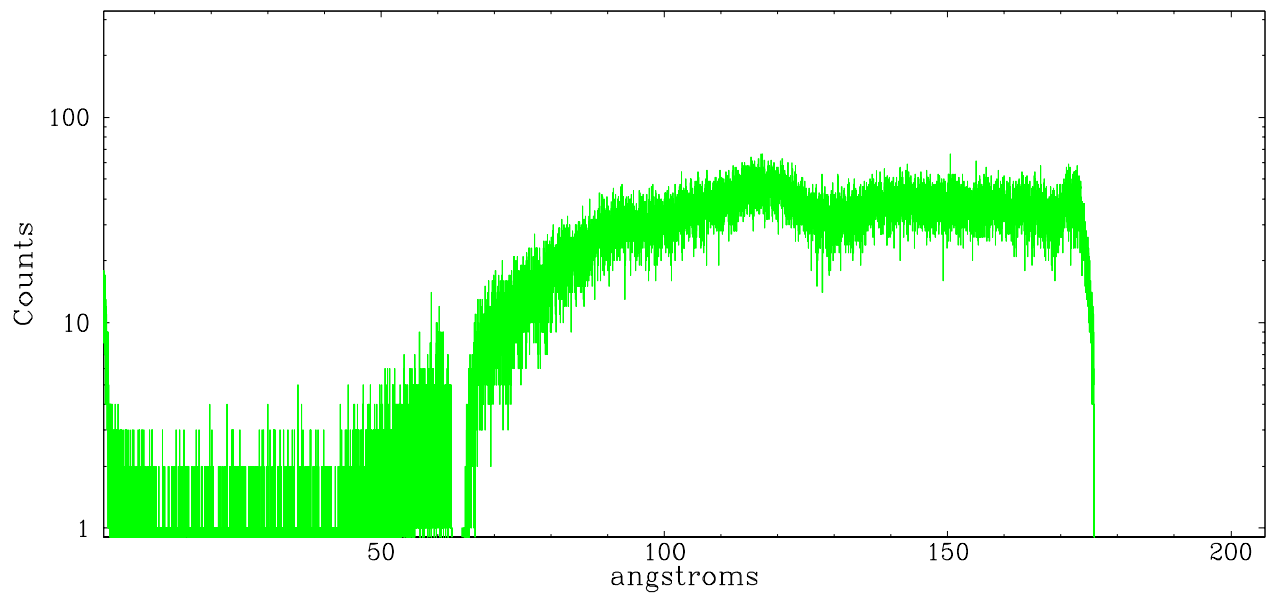


LETG Zero Order

leg order -1



leg order +1



A Summary

A.1 Status

V&V Scientist	Beth Sundheim
V&V Date (YYYY-MM-DD)	2006.10.15
V&V Edition	1
V&V Disposition and Status	OK
V&V Charge Time	19.981

A.2 Comments

Window constraint OK.