

# V&V Reference Report

## L2 ASCDS Version : 7.6.9

Observation 3666 - L2 Version 001  
Chandra X-Ray Center

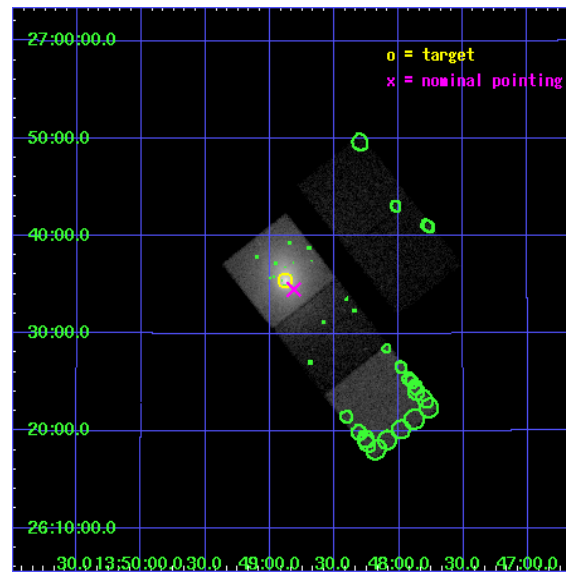
L2 Processing Date : Sep 19 2006

## Contents

<b>1</b>	<b>Front</b>	<b>2</b>
<b>2</b>	<b>OBI</b>	<b>3</b>
2.1	OBI . . . . .	3
2.1.1	Images . . . . .	3
2.1.2	Bias . . . . .	3
2.1.3	Parameters . . . . .	4
2.1.4	Events . . . . .	4
2.2	Compared Parameters . . . . .	5
2.3	Aspect . . . . .	6
2.4	Star Slots . . . . .	9
2.4.1	Slot 3 . . . . .	9
2.4.2	Slot 4 . . . . .	10
2.4.3	Slot 5 . . . . .	11
2.4.4	Slot 6 . . . . .	12
2.4.5	Slot 7 . . . . .	13
2.5	FID Slots . . . . .	14
2.5.1	Slot 0 . . . . .	14
2.5.2	Slot 1 . . . . .	15
2.5.3	Slot 2 . . . . .	16
<b>3</b>	<b>Point Sources</b>	<b>17</b>
<b>A</b>	<b>Summary</b>	<b>18</b>
A.1	Status . . . . .	18
A.2	Comments . . . . .	18

# 1 Front

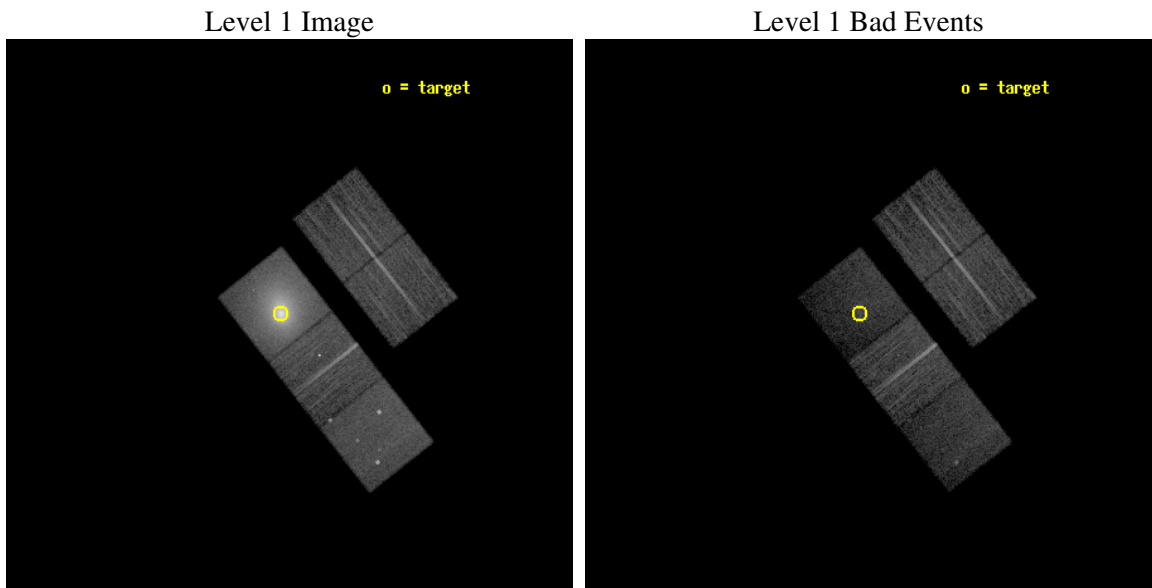
seq_num	790078
obs_id	3666
title	INVESTIGATING THE CONTAMINATION BUILD-UP ON ACIS
observer	Dr. CXC Calibration
object	A1795
dtcycle	0
cycle	P
ra_targ	207.219583
dec_targ	26.590833
ra_nom	207.20370411253
dec_nom	26.575632997644
roll_nom	231.7284856643
revision	2
ontime	14607.199971914
livetime	14416.346150617
ontime2	14597.777061313
ontime3	14604.059001684
ontime5	14607.199971914
ontime6	14607.199971914
ontime7	14607.199971914
l2events	292699



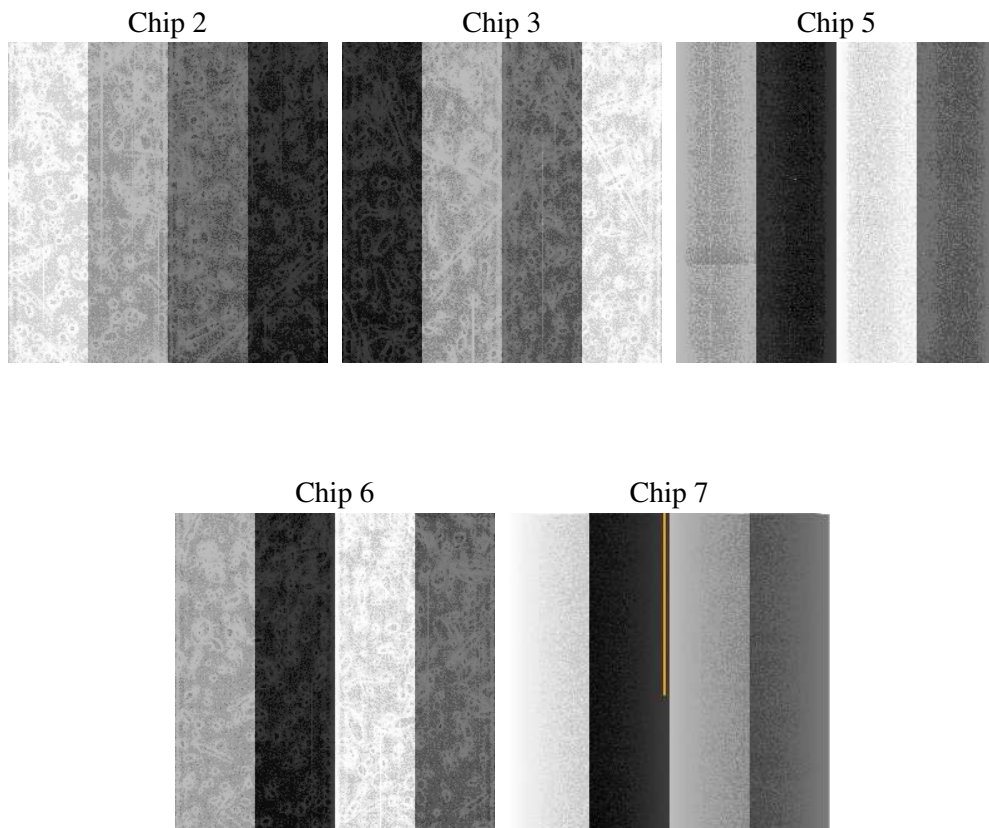
## 2 OBI

### 2.1 OBI

#### 2.1.1 Images



#### 2.1.2 Bias



### 2.1.3 Parameters

obi_num	0
ascdsver	7.6.9
caldbver	3.2.3
date	2006-09-19T09:16:32
revision	2

sched_exp_time	14500.000000
ontime	14611.941437691
ontime2	14602.518497169
ontime3	14608.80043754
ontime5	14611.941437691
ontime6	14611.94140777
ontime7	14611.941437691
l1events	590625

### 2.1.4 Events

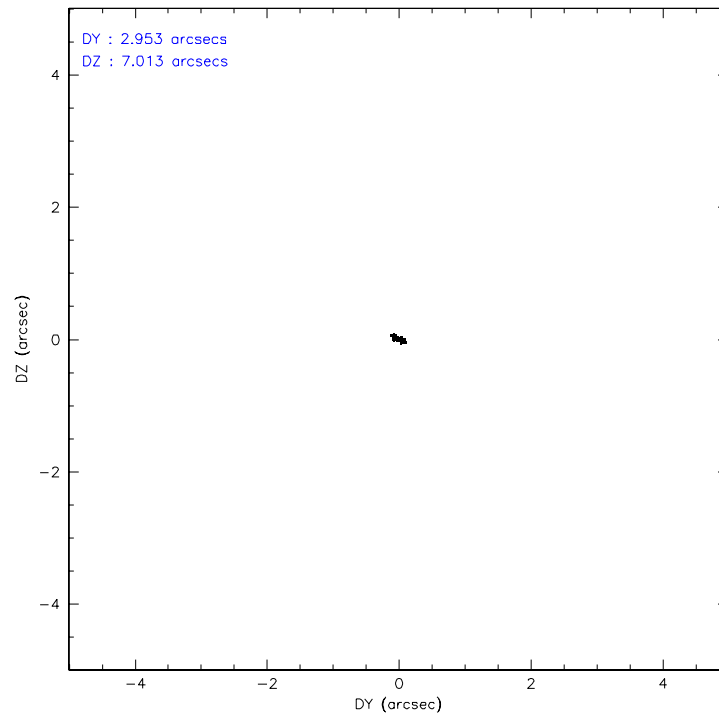
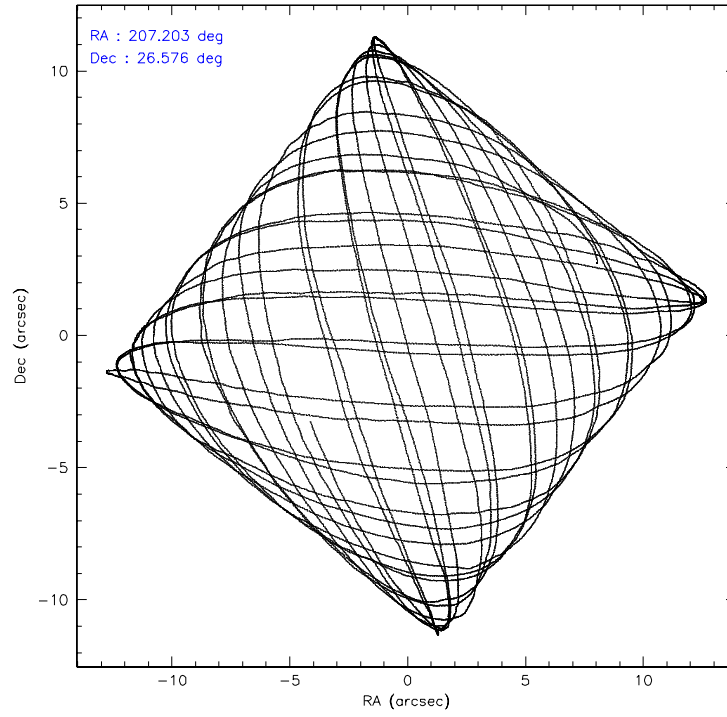
	ccd 2	ccd 3	ccd 5	ccd 6	ccd 7
level 1 events	77622	74059	89406	88909	260629
rejected events	69822	65941	42685	69473	38203
rejected %	89%	89%	47%	78%	14%

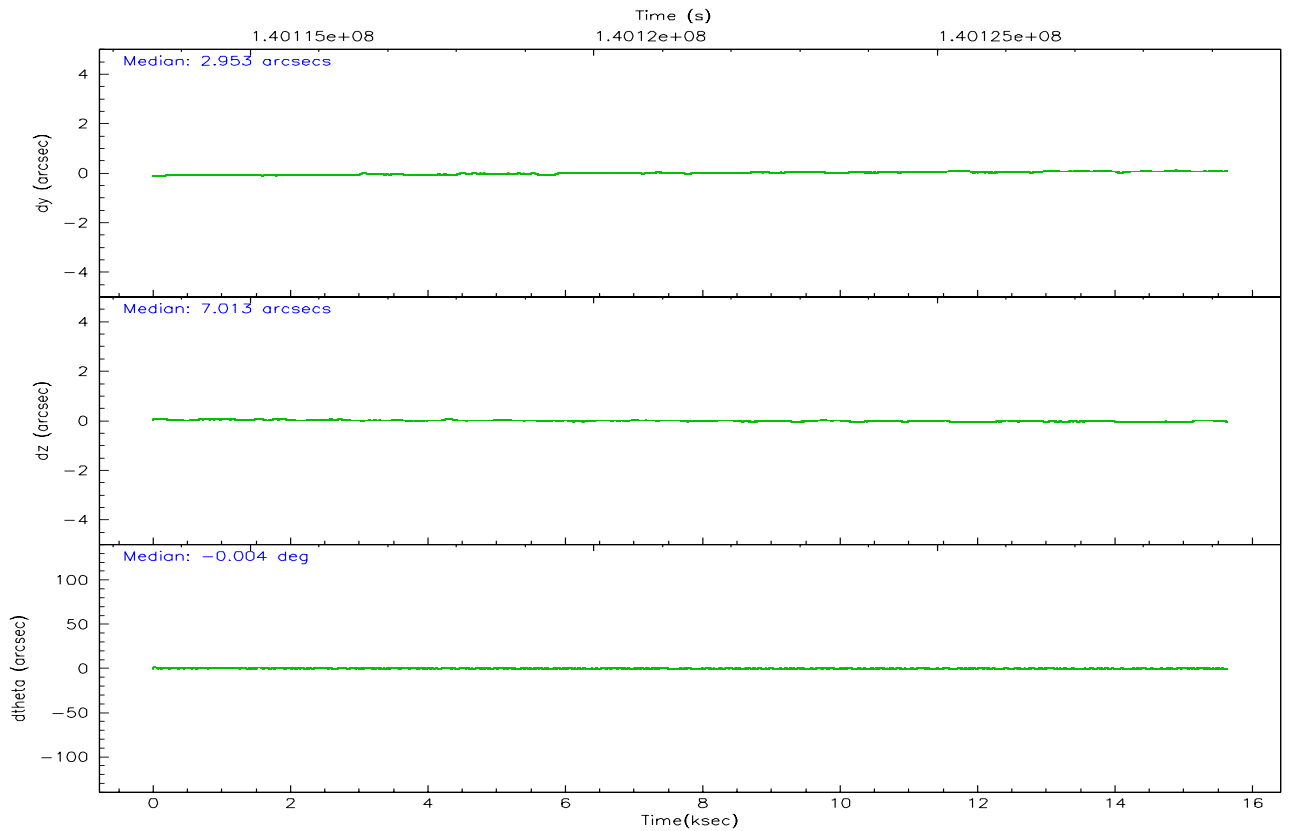
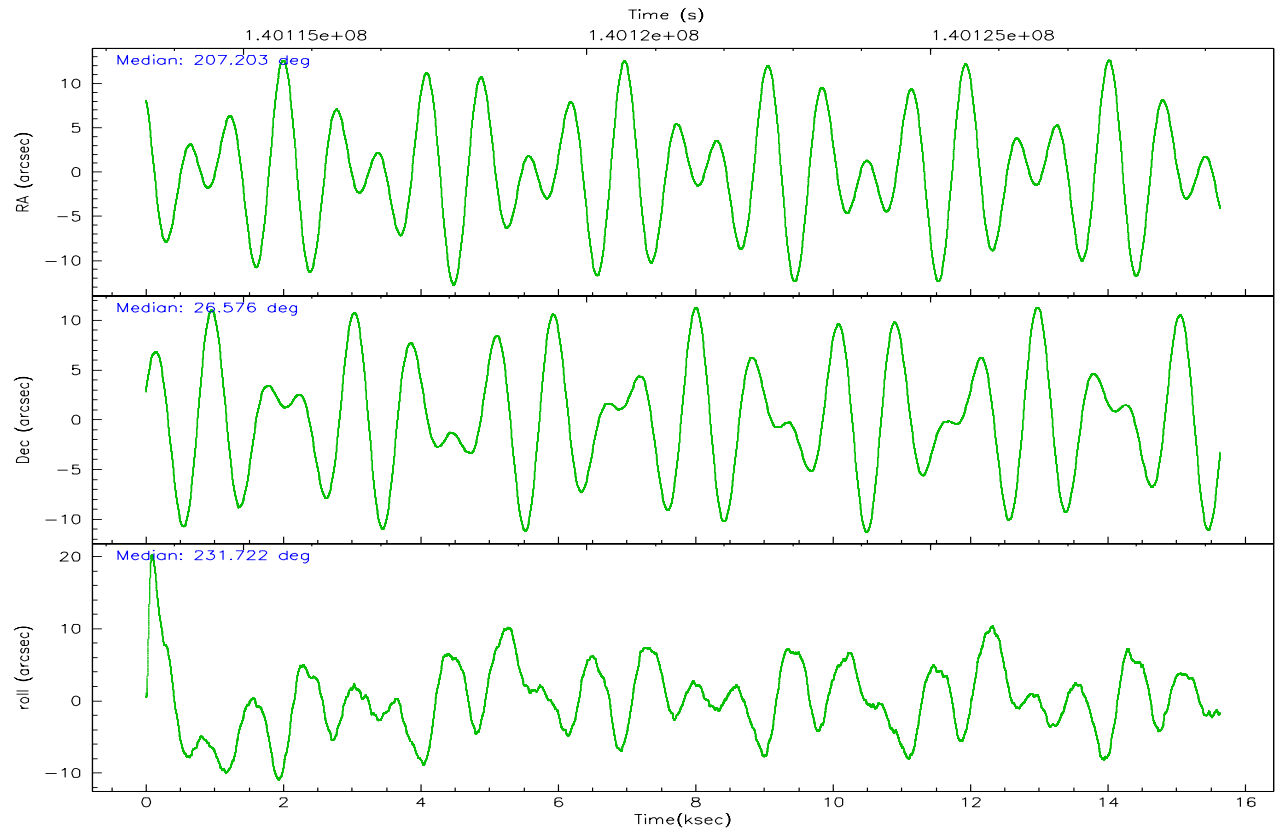
	ccd 2	ccd 3	ccd 5	ccd 6	ccd 7
grade 0 events	3301	3657	5749	12758	61521
	4%	4%	6%	14%	23%
grade 1 events	39	34	284	116	109
	0%	0%	0%	0%	0%
grade 2 events	1603	1583	14024	2638	60937
	2%	2%	15%	2%	23%
grade 3 events	816	838	1397	1198	22842
	1%	1%	1%	1%	8%
grade 4 events	850	838	1363	1136	22454
	1%	1%	1%	1%	8%
grade 5 events	1918	2312	4975	2417	6740
	2%	3%	5%	2%	2%
grade 6 events	1231	1208	24195	1713	54731
	1%	1%	27%	1%	20%
grade 7 events	67864	63589	37419	66933	31295
	87%	85%	41%	75%	12%

## 2.2 Compared Parameters

Parameter	Planned	Actual	Parameter	Planned	Actual
Instrument	ACIS	ACIS	Obspar format version number	6	6
Detector	ACIS-23567	ACIS-23567	Obspar file type	PREDICTED	ACTUAL
Grating	NONE	NONE	Obspar update status	NONE	UPDATED
Data mode	VFAINT	VFAINT	Number of optional ACIS chips dropped	0	0
Observation mode	POINTING	POINTING	On-chip summing requested	N	N
Pointing RA	207.207706	207.2037041125304	Subarray requested	NONE	NONE
Pointing Dec	26.602665	26.57563299764447	Alternating exposures requested	N	N
Pointing Roll	231.570061	231.7284856643046	Primary exposure time	0.000000	3.1
Window start time	140054464.184000	140054464.184000			
Window stop time	143683264.184000	143683264.184000			
SIM focus pos (mm)	-0.684267	-0.6828225247311905			
SIM defocus (mm)	0	0.001444936568705701			
SIM translation stage pos (mm)	-190.132523	-190.1400660498719			
SIM translation stage offset (mm)	0	0.00754346686406393			
Observation start time	140114716.184000	140113279.51208			
Observation start date	2002-06-10T16:44:12	2002-06-10T16:21:19			
Observation end time	140129216.184000	140129940.37526			
Observation end date	2002-06-10T20:45:52	2002-06-10T20:59:00			
Read mode	TIMED	TIMED			

## 2.3 Aspect



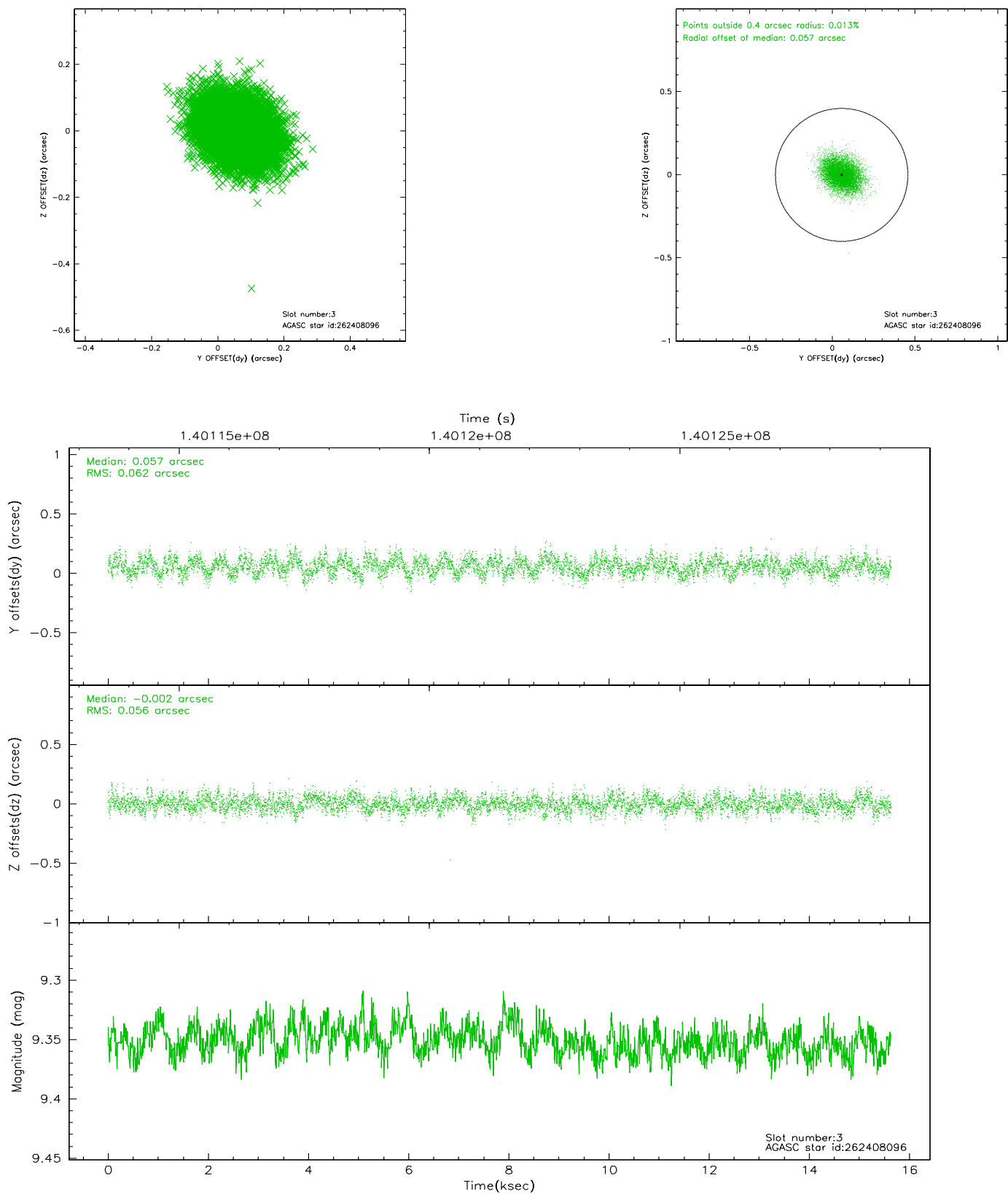


### Slot Statistics

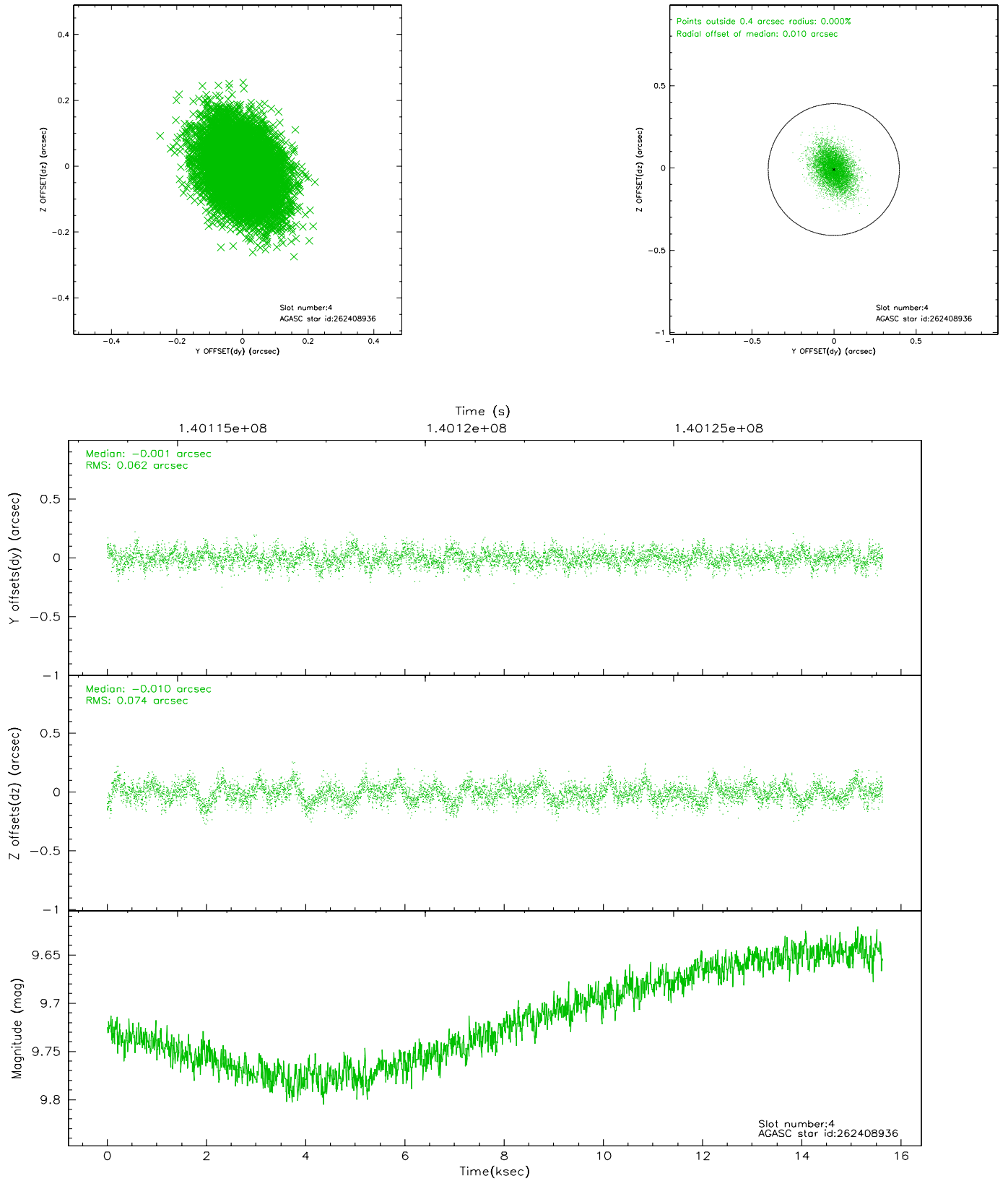
slot	status	id	mag	n_pts	med_dy	med_dz	dr1	dr2	ra	dec	mean_y	mean_z
0	FID	ACIS-S-2	7.11	3813	-0.003	0.034	0.006	0.011	0.000000	0.000000	-755.59	-1728.15
1	FID	ACIS-S-4	7.20	3813	-0.064	-0.008	0.005	0.010	0.000000	0.000000	2157.49	180.01
2	FID	ACIS-S-5	7.24	3813	0.036	-0.017	0.006	0.011	0.000000	0.000000	-1808.04	173.98
3	GUIDE	262408096	9.35	7621	0.057	-0.002	0.089	0.143	207.011678	26.515421	637.54	-299.13
4	GUIDE	262408936	9.73	7621	-0.001	-0.010	0.103	0.170	207.154731	26.726554	-244.14	-410.05
5	GUIDE	262411960	9.67	7622	0.131	-0.008	0.147	0.225	207.327895	25.881727	1790.23	1918.86
6	GUIDE	262407608	9.38	7622	-0.086	-0.019	0.088	0.141	207.378401	26.435507	128.43	805.78
7	GUIDE	262408224	8.79	7626	-0.105	0.036	0.082	0.131	207.599344	26.288334	98.32	1693.20

## 2.4 Star Slots

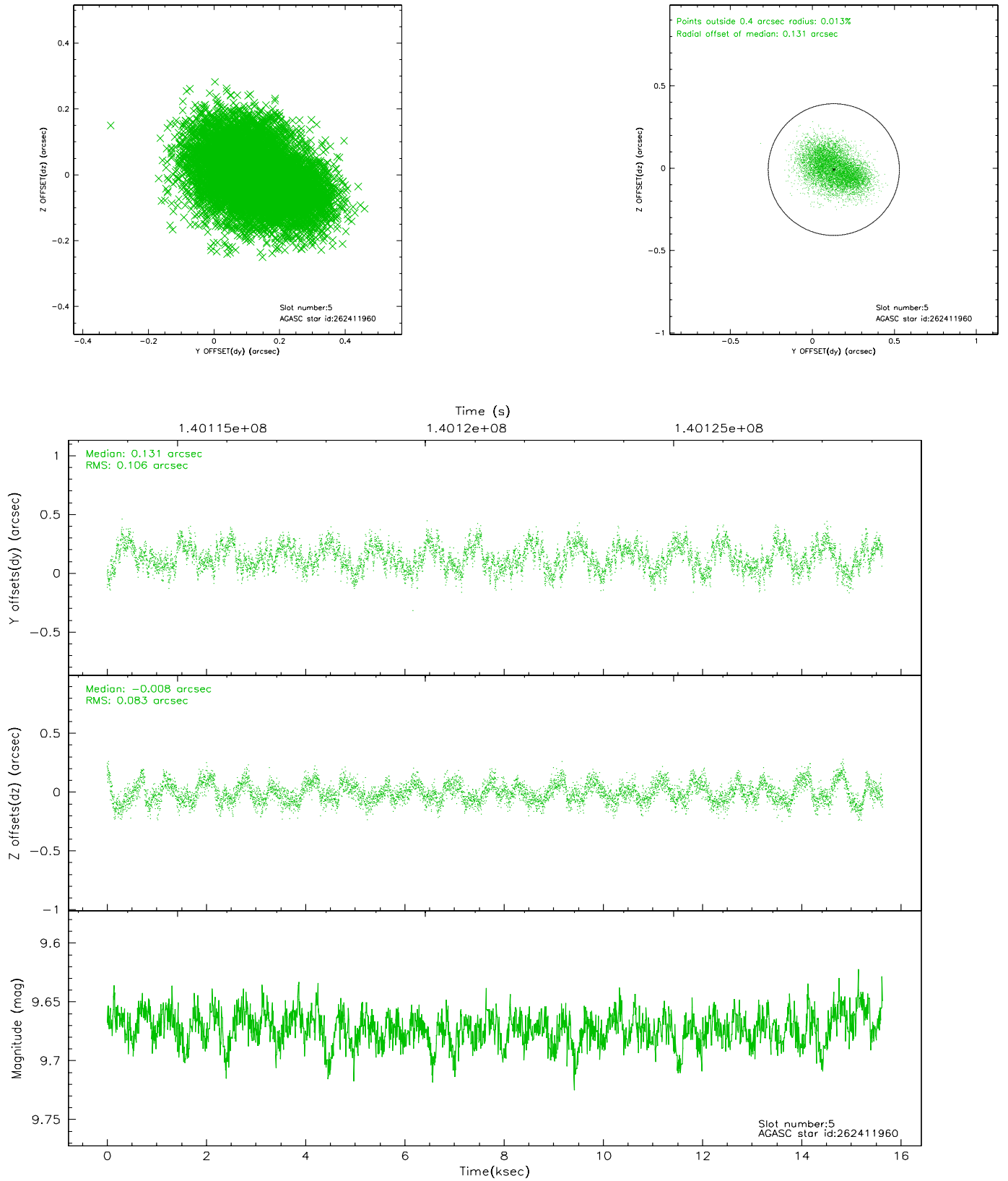
### 2.4.1 Slot 3



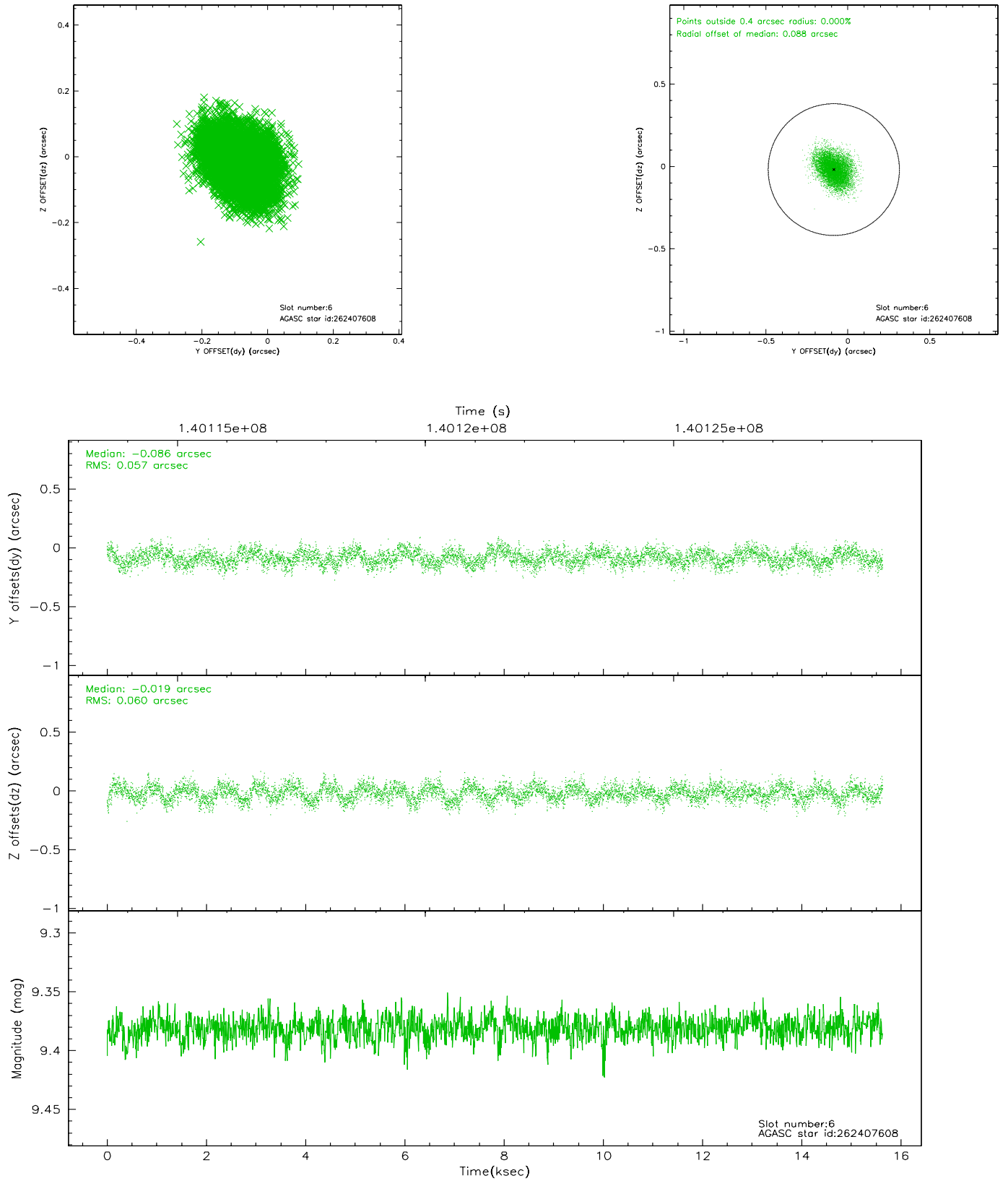
## 2.4.2 Slot 4



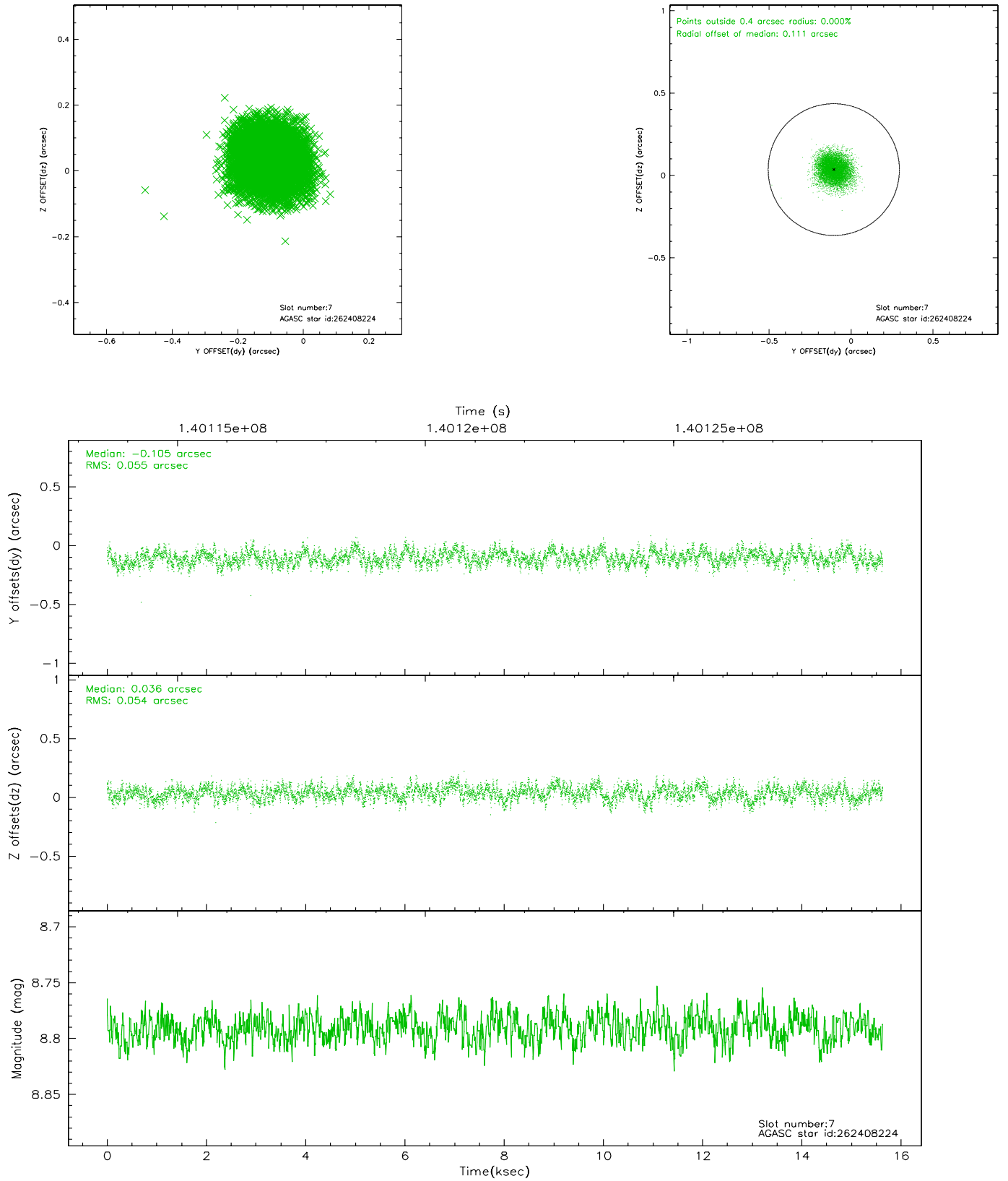
### 2.4.3 Slot 5



## 2.4.4 Slot 6

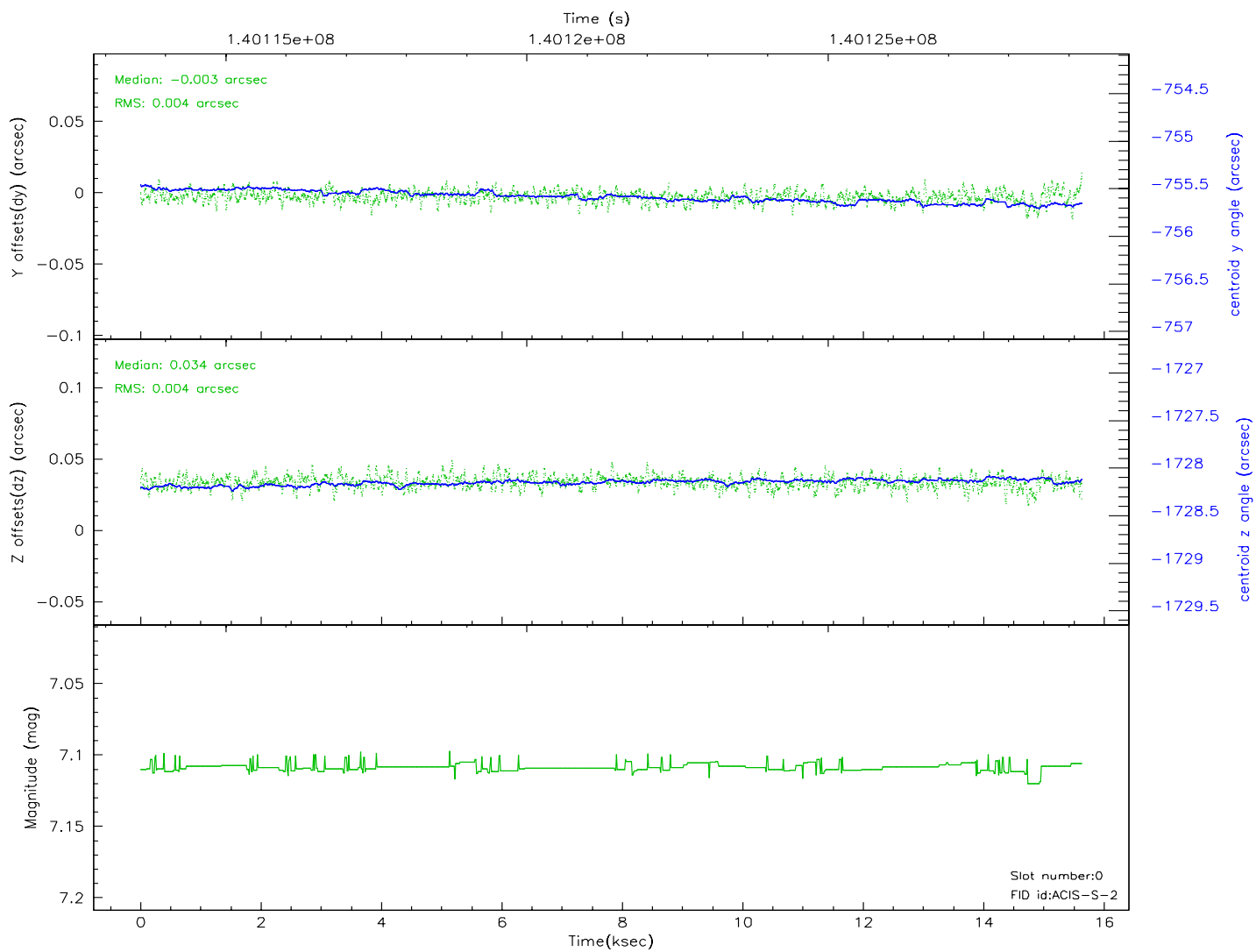
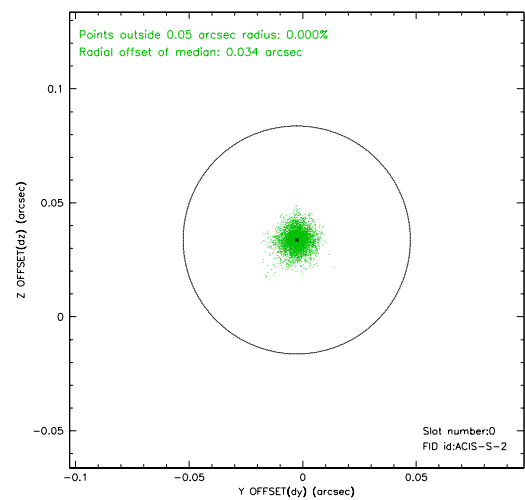
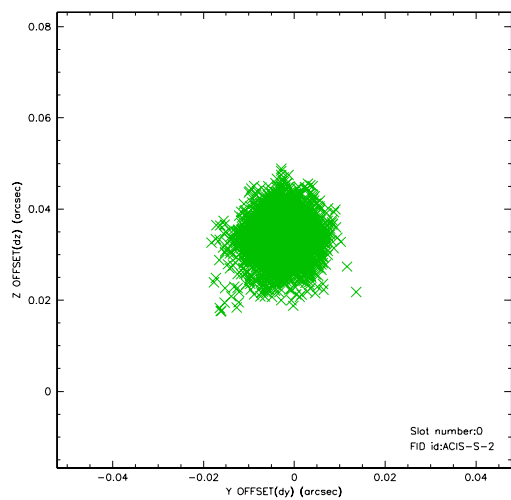


## 2.4.5 Slot 7

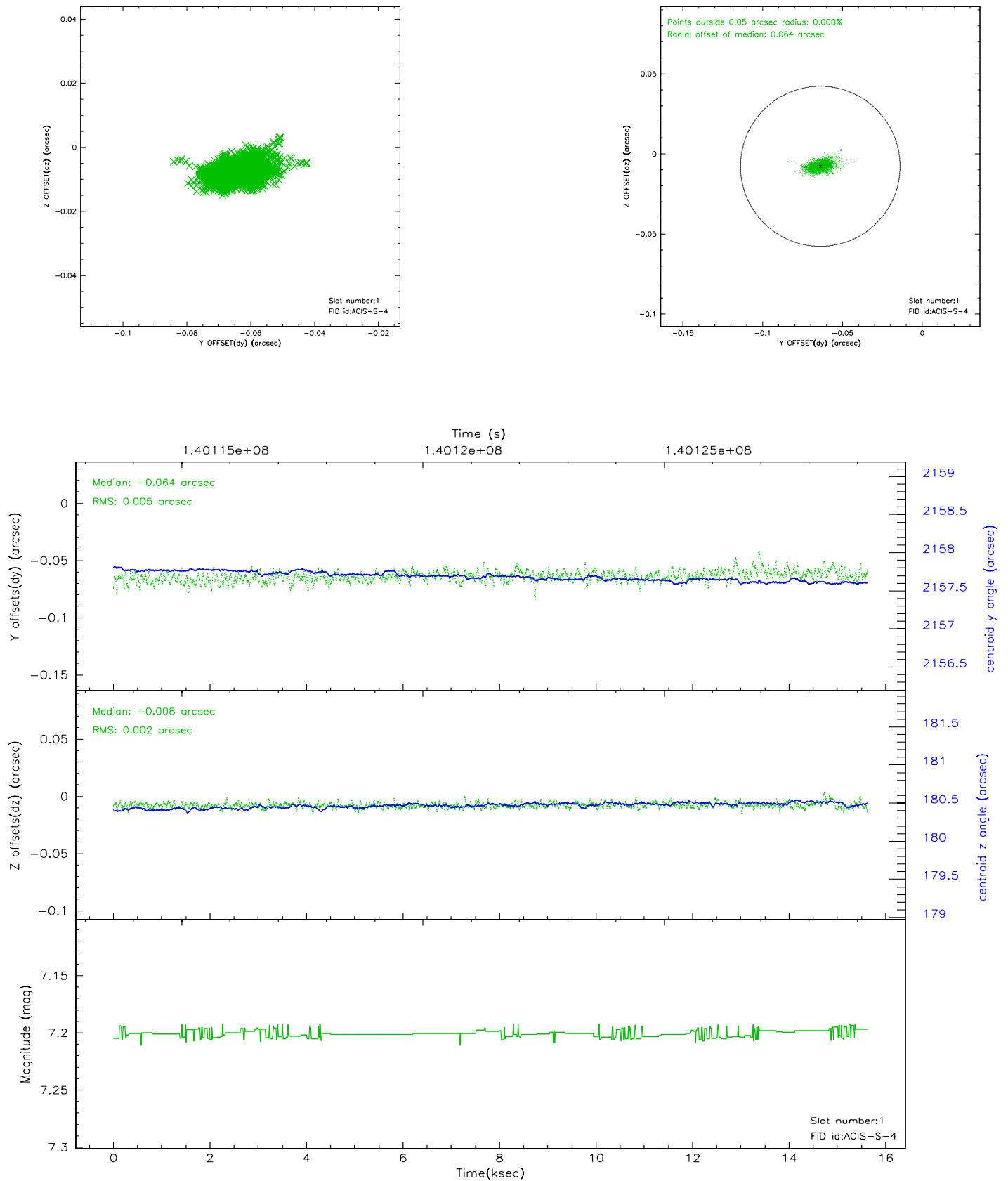


## 2.5 FID Slots

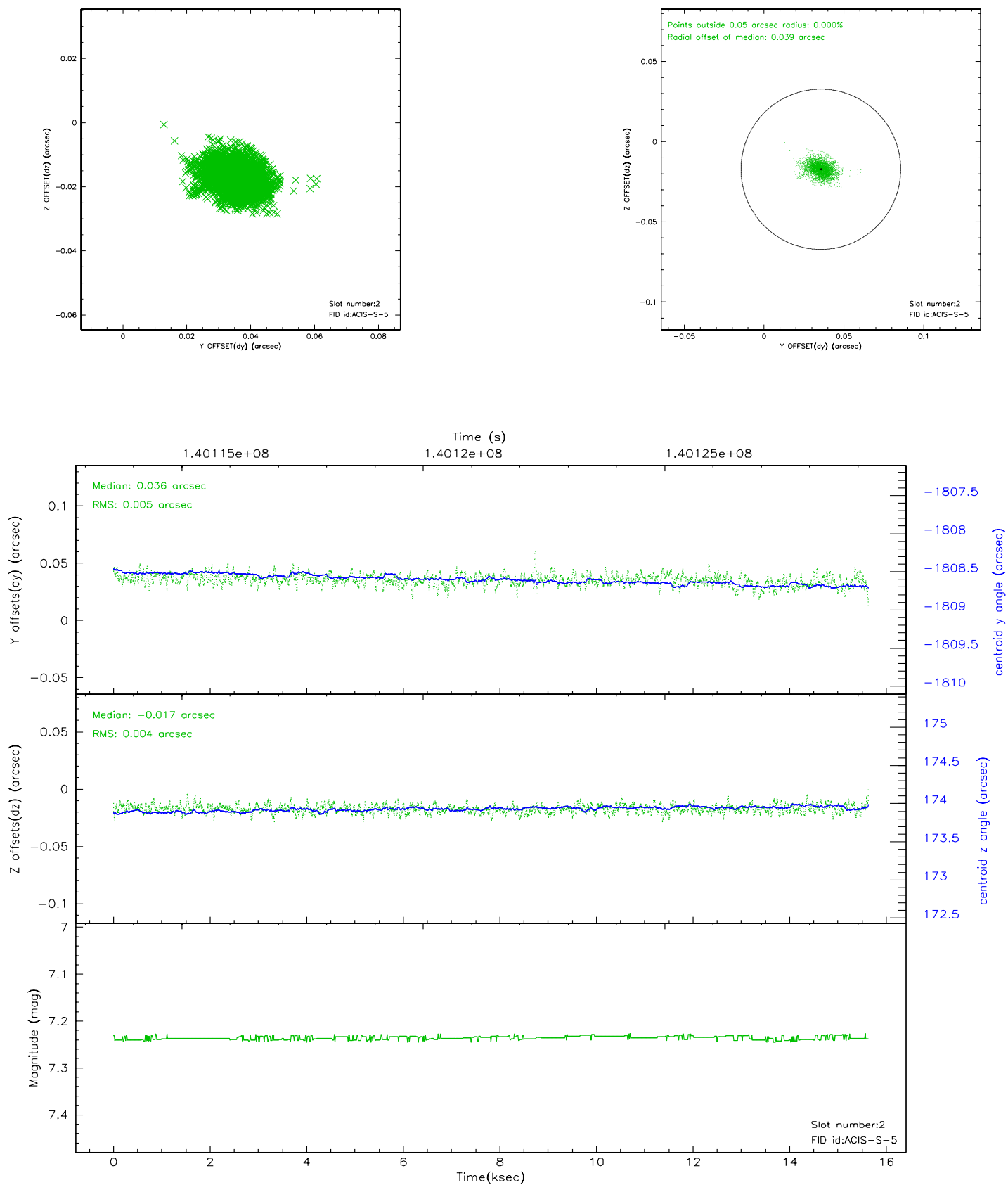
### 2.5.1 Slot 0



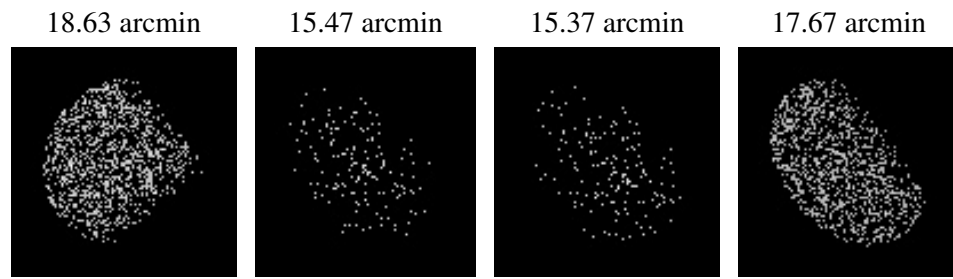
## 2.5.2 Slot 1



### 2.5.3 Slot 2



### 3 Point Sources



## A Summary

### A.1 Status

V&V Scientist	Jen Lauer
V&V Date (YYYY-MM-DD)	2006.09.19
V&V Edition	1
V&V Disposition and Status	OK
V&V Charge Time	14.607

### A.2 Comments

Window constraint met.