

V&V Reference Report

L2 ASCDS Version : 7.6.9

Observation 2872 - L2 Version 001
Chandra X-Ray Center

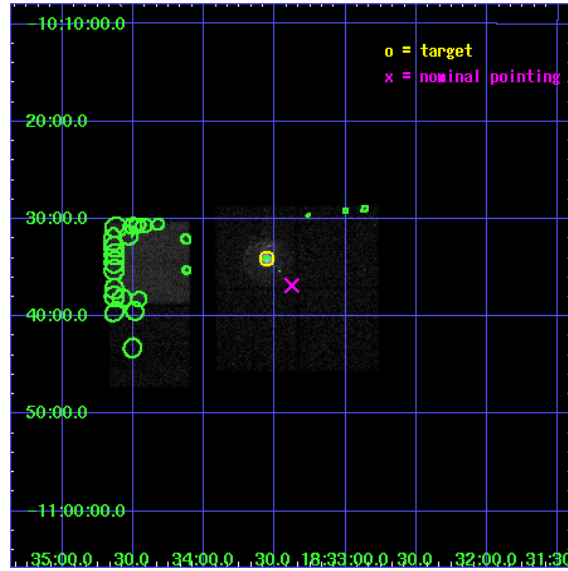
L2 Processing Date : Oct 4 2006

Contents

1	Front	2
2	OBI	3
2.1	OBI	3
2.1.1	Images	3
2.1.2	Bias	3
2.1.3	Parameters	4
2.1.4	Events	4
2.2	Compared Parameters	5
2.3	Aspect	6
2.4	Star Slots	9
2.4.1	Slot 3	9
2.4.2	Slot 4	10
2.4.3	Slot 5	11
2.4.4	Slot 6	12
2.4.5	Slot 7	13
2.5	FID Slots	14
2.5.1	Slot 0	14
2.5.2	Slot 1	15
2.5.3	Slot 2	16
3	Point Sources	17
A	Summary	18
A.1	Status	18
A.2	Comments	18

1 Front

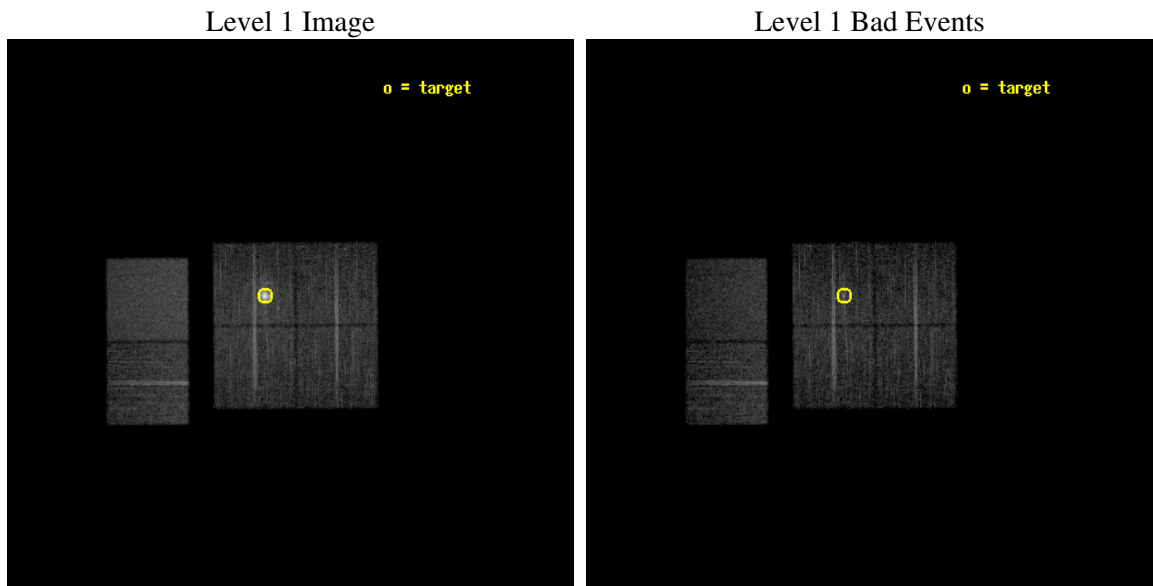
seq_num	590261
obs_id	2872
title	AO3B CALIBRATION OBSERVATIONS THE STANDARD CANDLES CAS A AND G21.5-09
observer	Dr. CXC Calibration
object	G21.5-0.9 [Chip I3, T=120, Offsets=-2,2,0]
dtcycle	0
cycle	P
ra_targ	278.389583
dec_targ	-10.568528
ra_nom	278.34491669112
dec_nom	-10.614117496313
roll_nom	269.69245881663
revision	2
ontime	9964.7999628782
liveltime	9838.6196656661
ontime0	9964.7999628782
ontime1	9964.7999628782
ontime2	9964.7999628782
ontime3	9964.7999628782
ontime6	9964.7999628782
ontime7	9964.7999628782
l2events	92777



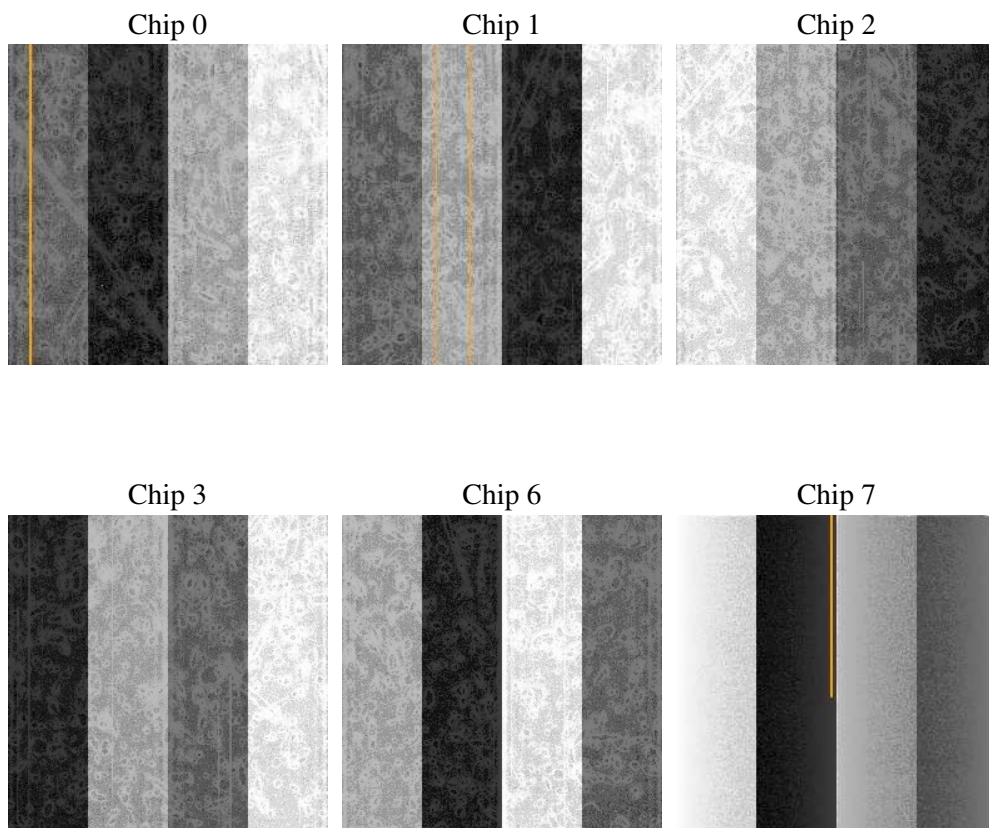
2 OBI

2.1 OBI

2.1.1 Images



2.1.2 Bias



2.1.3 Parameters

obi_num	1
ascdsver	7.6.9
caldbver	3.2.3
date	2006-10-04T09:05:39
revision	2

sched_exp_time	10000.000000
ontime	9969.3183721006
ontime0	9969.3183721006
ontime1	9969.3183721006
ontime2	9969.3183721006
ontime3	9969.3183721006
ontime6	9969.3183721006
ontime7	9969.3183721006
l1events	418063

2.1.4 Events

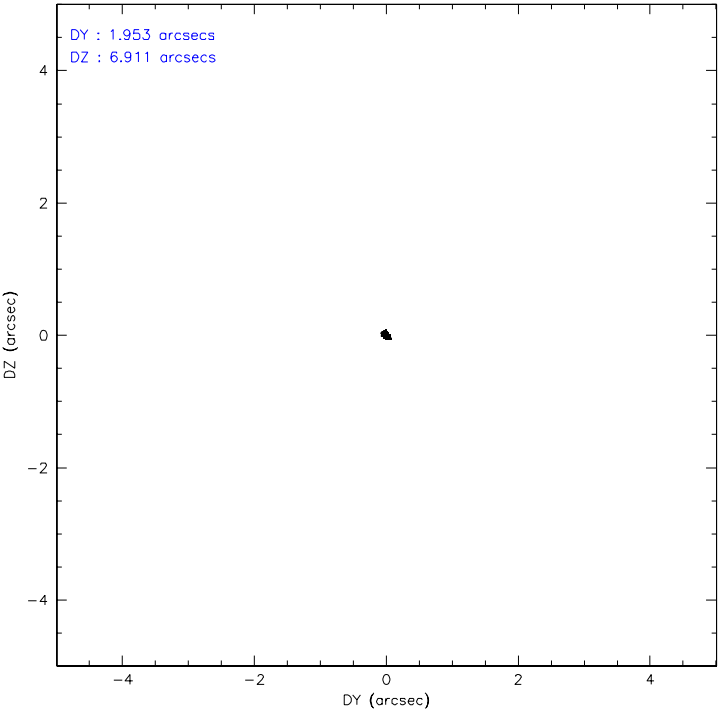
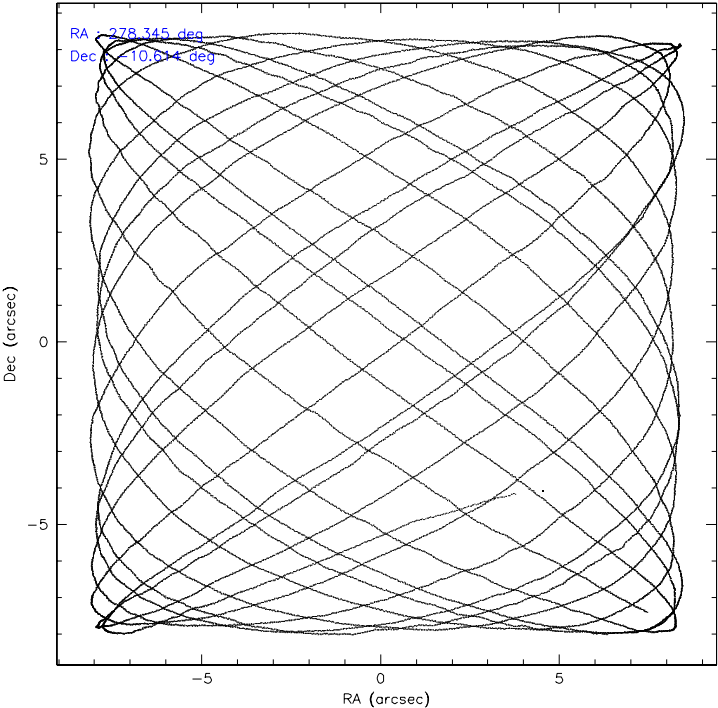
	ccd 0	ccd 1	ccd 2	ccd 3	ccd 6	ccd 7
level 1 events	57966	57989	64685	92177	64233	81013
rejected events	50152	49263	56667	54436	56615	50305
rejected %	86%	84%	87%	59%	88%	62%

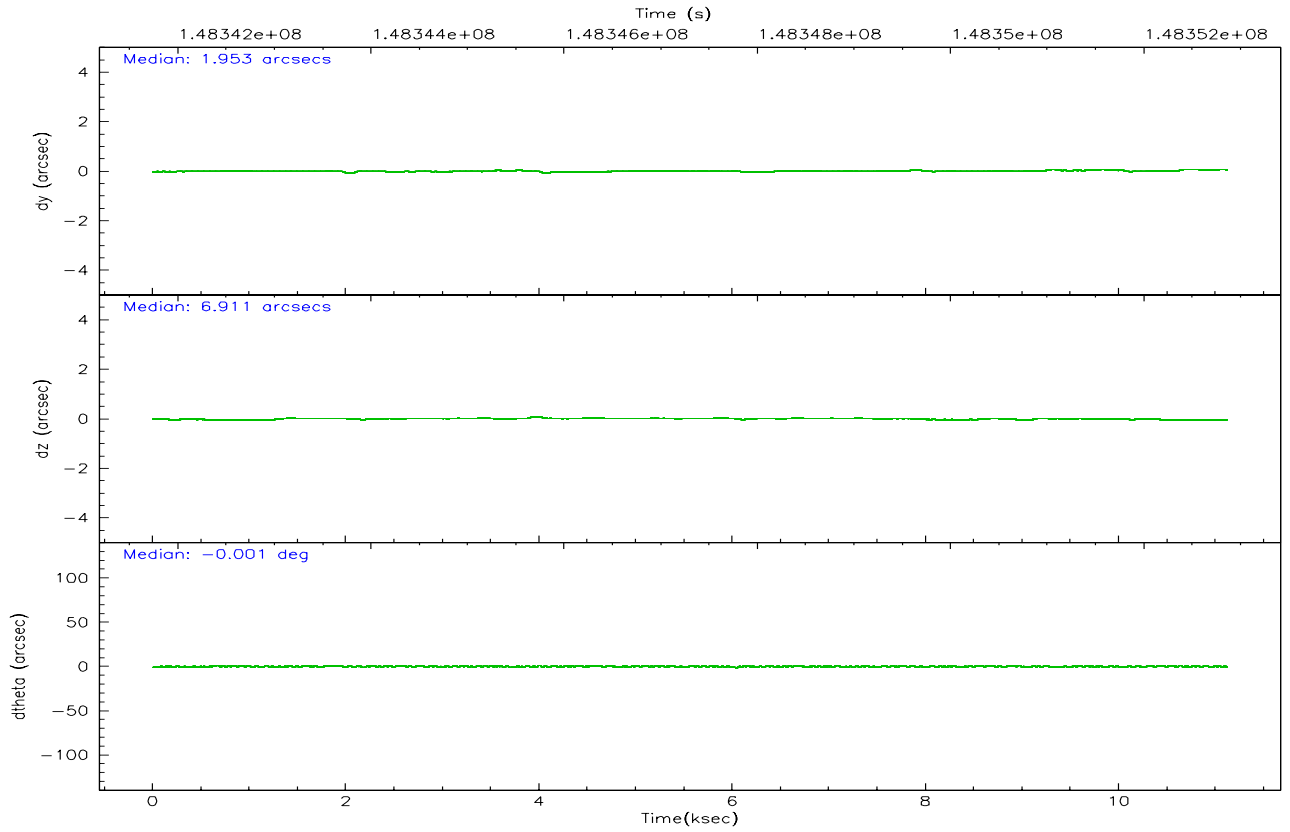
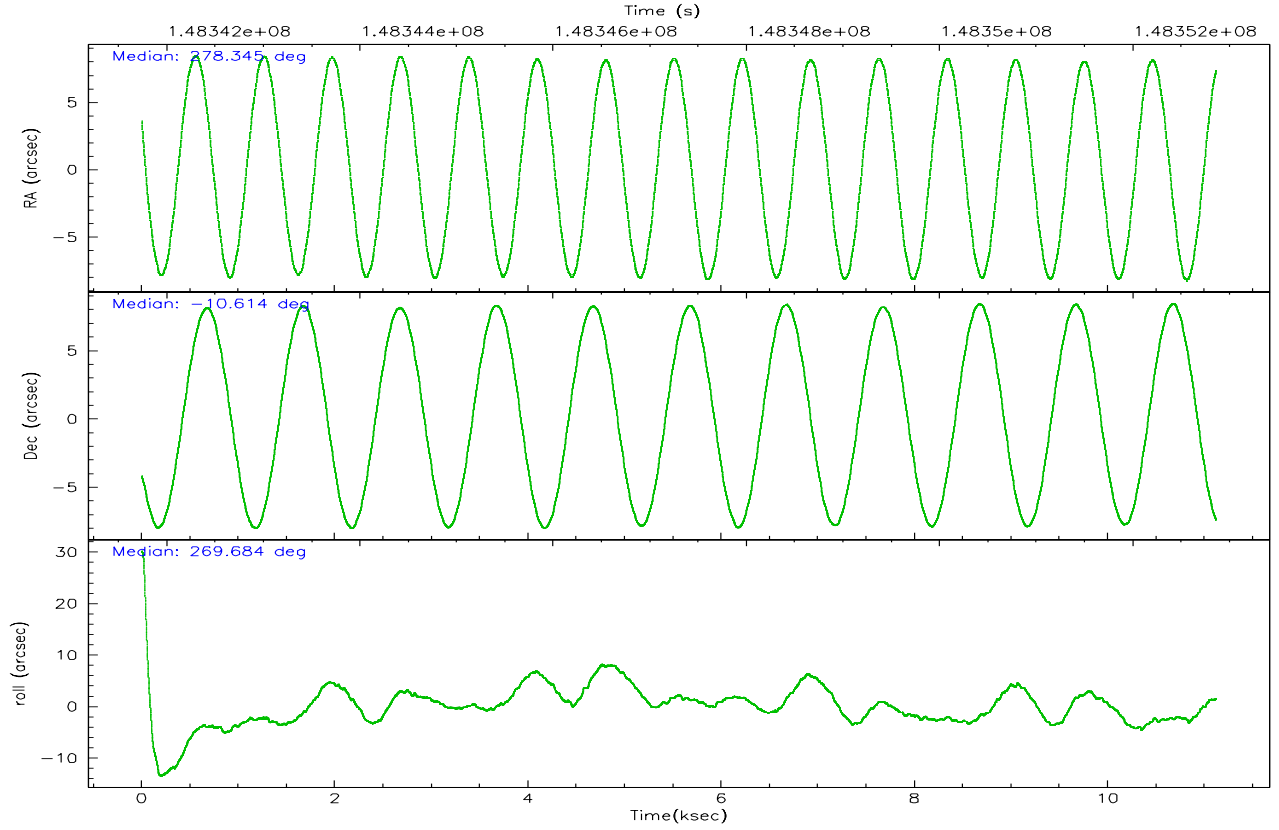
	ccd 0	ccd 1	ccd 2	ccd 3	ccd 6	ccd 7
grade 0 events	3492	3847	3820	25854	3083	1759
	6%	6%	5%	28%	4%	2%
grade 1 events	25	31	38	288	30	43
	0%	0%	0%	0%	0%	0%
grade 2 events	1610	1724	1579	5325	1522	7545
	2%	2%	2%	5%	2%	9%
grade 3 events	759	828	723	1946	761	1502
	1%	1%	1%	2%	1%	1%
grade 4 events	709	820	665	2002	766	1539
	1%	1%	1%	2%	1%	1%
grade 5 events	2410	2509	2380	2726	2848	5387
	4%	4%	3%	2%	4%	6%
grade 6 events	1249	1513	1236	2632	1492	18386
	2%	2%	1%	2%	2%	22%
grade 7 events	47712	46717	54244	51404	53731	44852
	82%	80%	83%	55%	83%	55%

2.2 Compared Parameters

Parameter	Planned	Actual	Parameter	Planned	Actual
Instrument	ACIS	ACIS	Obspar format version number	6	6
Detector	ACIS-012367	ACIS-012367	Obspar file type	PREDICTED	ACTUAL
Grating	NONE	NONE	Obspar update status	NONE	UPDATED
Data mode	FAINT	FAINT	Number of optional ACIS chips dropped	0	0
Observation mode	POINTING	POINTING	On-chip summing requested	N	N
Pointing RA	278.331054	278.3449166911179	Subarray requested	NONE	NONE
Pointing Dec	-10.590343	-10.6141174963128	Alternating exposures requested	N	N
Pointing Roll	269.481223	269.692458816634	Primary exposure time	0.000000	3.2
Window start time	147225664.184000	147225664.184000			
Window stop time	149731264.184000	149731264.184000			
SIM focus pos (mm)	-0.782348	-0.7809083437167272			
SIM defocus (mm)	0	0.001439871863259334			
SIM translation stage pos (mm)	-233.592463	-233.5874344608287			
SIM translation stage offset (mm)	0	-0.005018542100998502			
Observation start time	148342871.184000	148341445.82542			
Observation start date	2002-09-13T22:20:07	2002-09-13T21:57:25			
Observation end time	148352871.184000	148353021.1509			
Observation end date	2002-09-14T01:06:47	2002-09-14T01:10:21			
Read mode	TIMED	TIMED			

2.3 Aspect



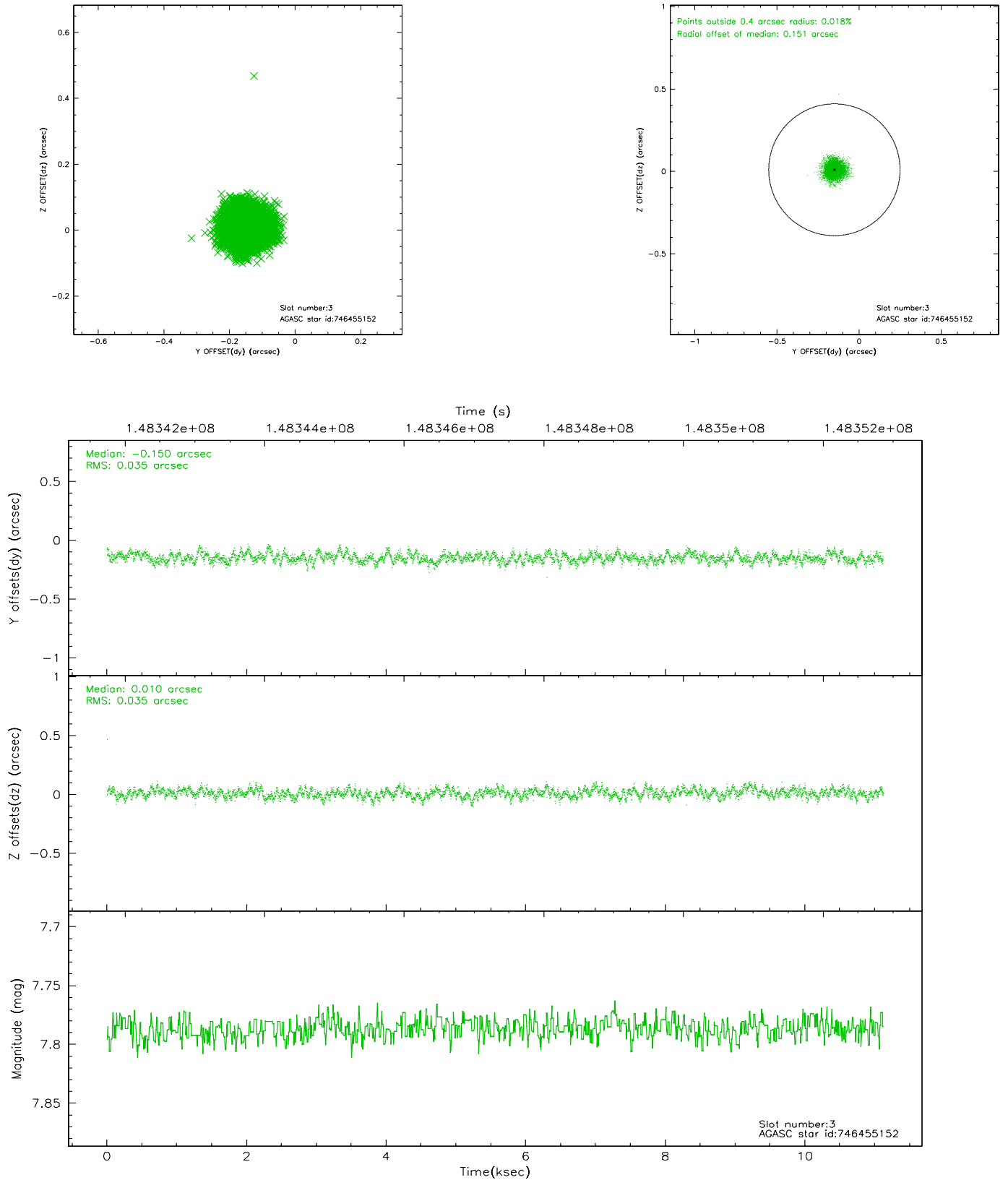


Slot Statistics

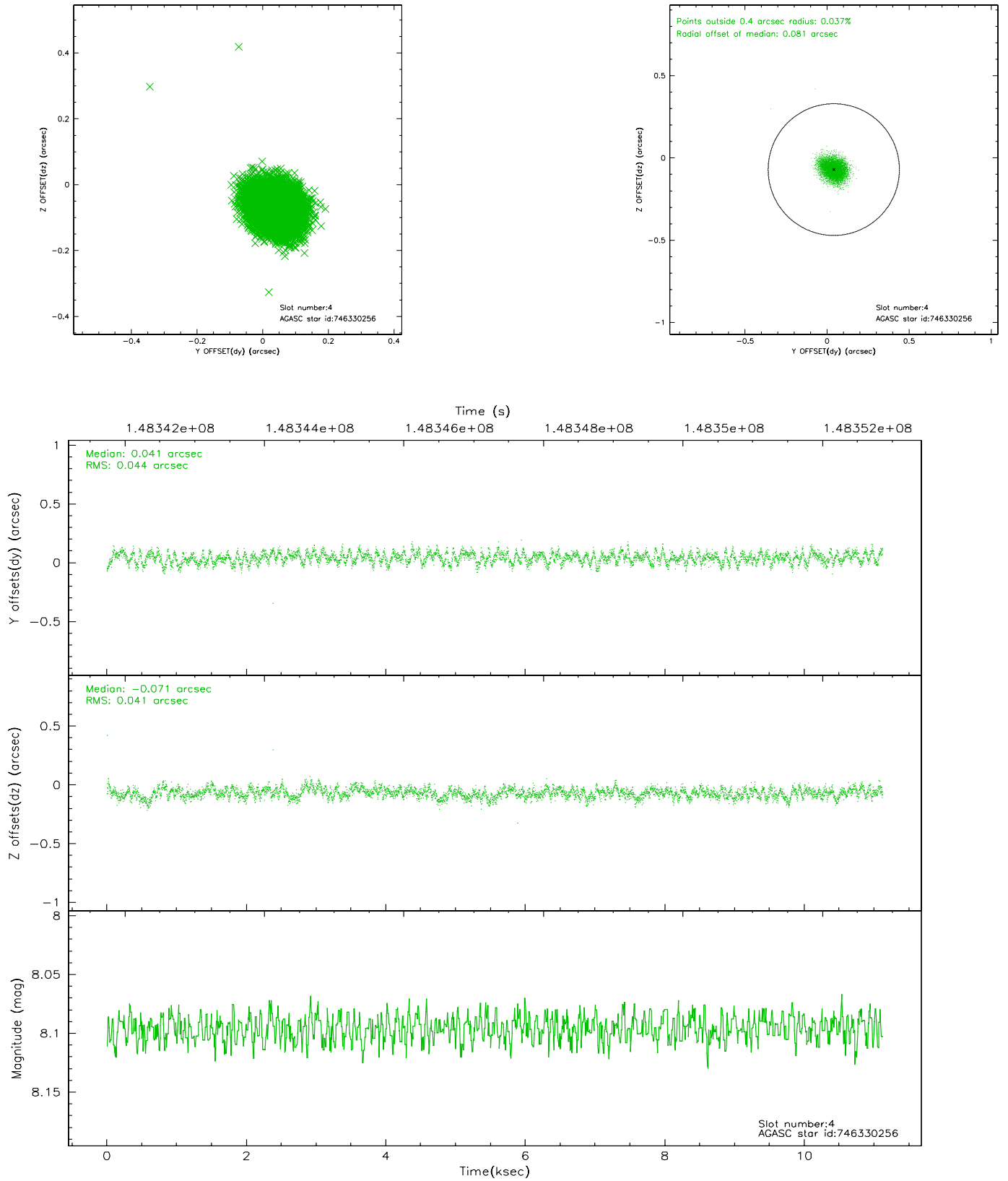
slot	status	id	mag	n_pts	med_dy	med_dz	dr1	dr2	ra	dec	mean_y	mean_z
0	FID	ACIS-I-1	7.25	2711	-0.024	0.049	0.006	0.011	0.000000	0.000000	937.82	-830.27
1	FID	ACIS-I-5	7.24	2711	-0.019	0.042	0.006	0.010	0.000000	0.000000	-1809.98	1067.04
2	FID	ACIS-I-6	7.26	2713	-0.049	-0.020	0.006	0.011	0.000000	0.000000	402.90	1711.96
3	GUIDE	746455152	7.79	5425	-0.150	0.010	0.053	0.084	278.447893	-9.976732	-2213.17	394.40
4	GUIDE	746330256	8.10	5425	0.041	-0.071	0.064	0.101	277.634401	-10.863955	1009.71	-2453.37
5	GUIDE	746455112	8.93	5423	0.192	-0.155	0.084	0.139	278.266531	-10.703234	408.45	-224.47
6	GUIDE	746460272	8.94	5425	-0.063	0.116	0.077	0.122	278.847488	-10.152127	-1593.27	1816.05
7	GUIDE	746461728	9.77	5406	-0.019	0.097	0.113	0.184	278.986921	-10.530755	-234.15	2320.19

2.4 Star Slots

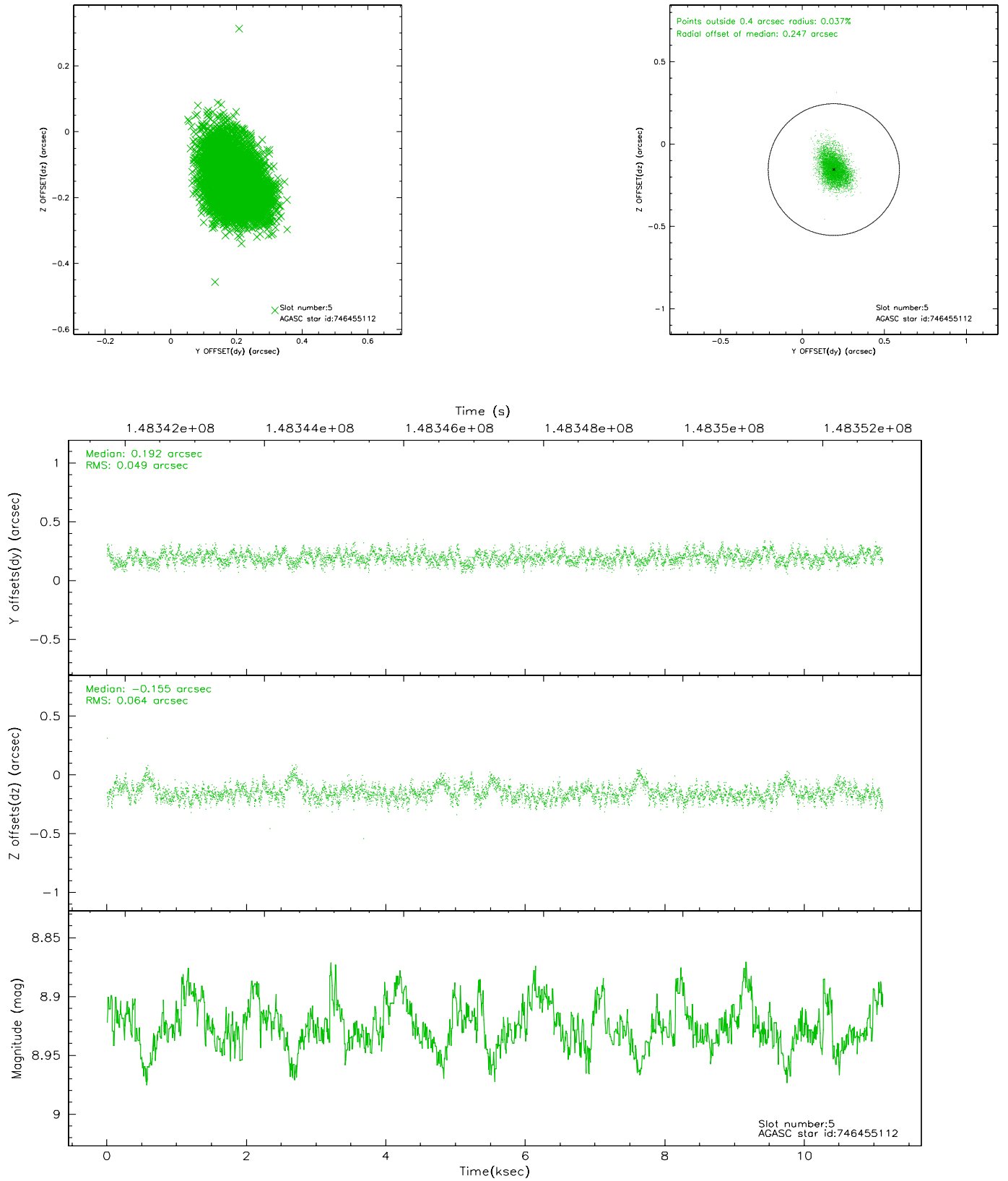
2.4.1 Slot 3



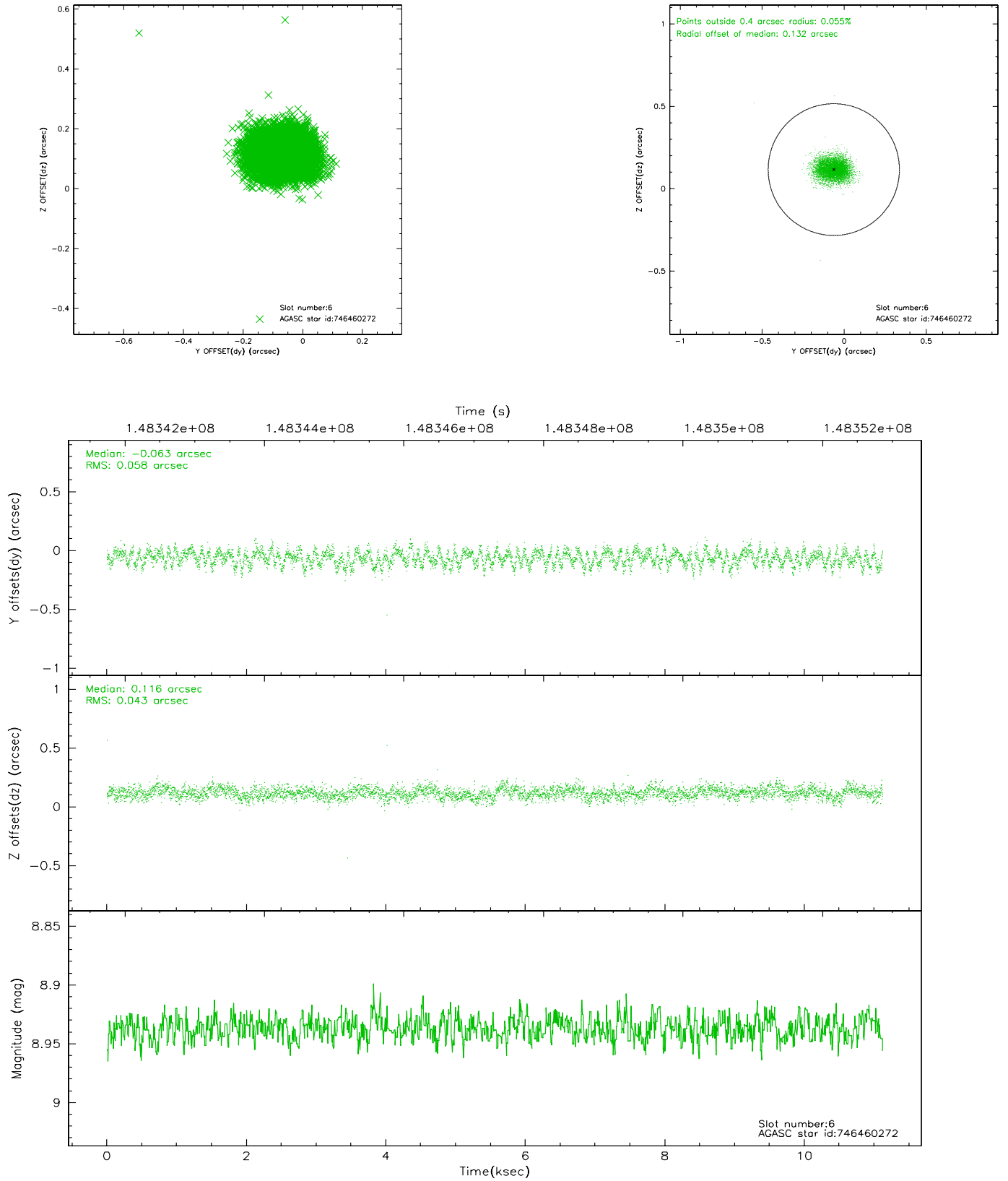
2.4.2 Slot 4



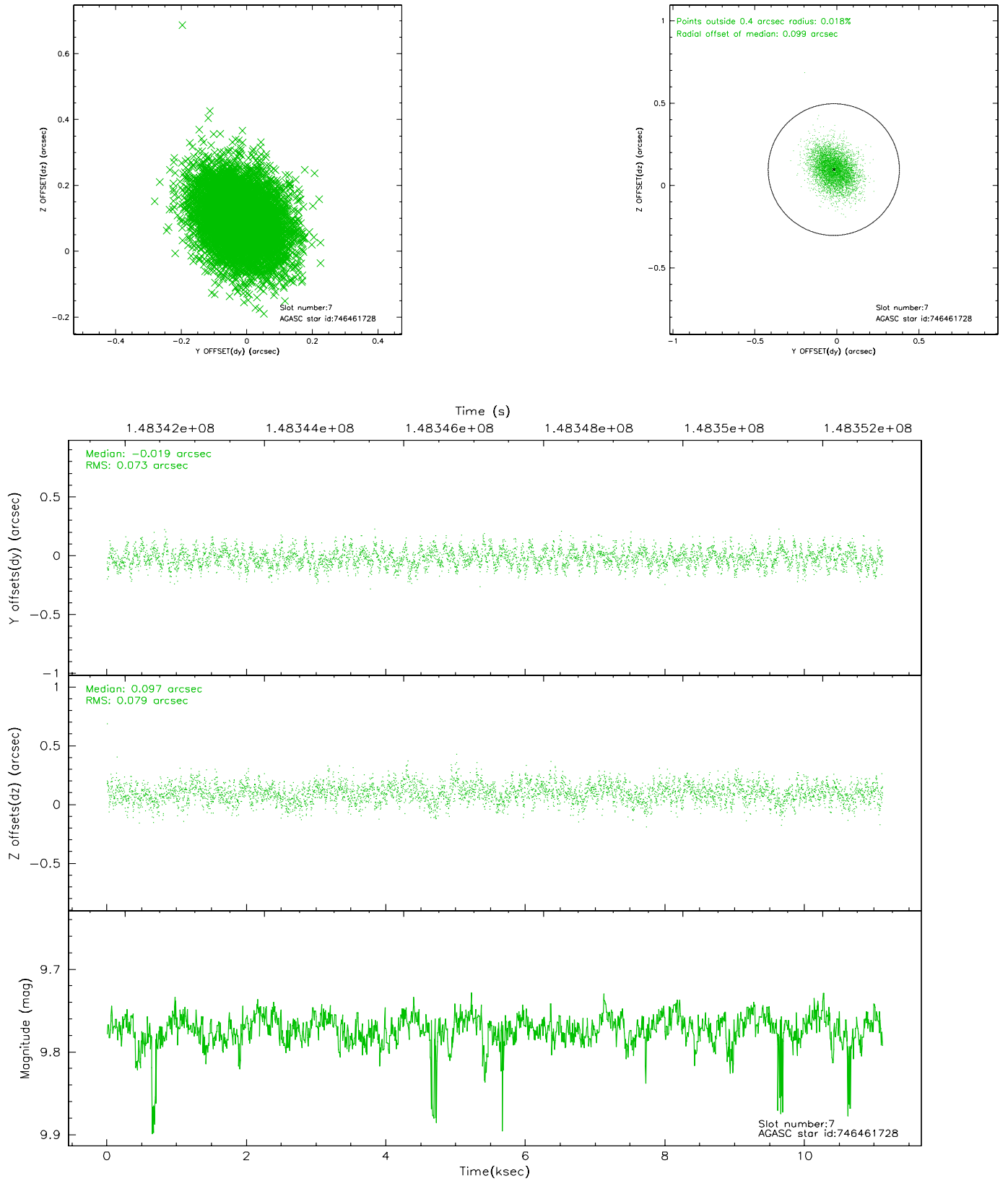
2.4.3 Slot 5



2.4.4 Slot 6

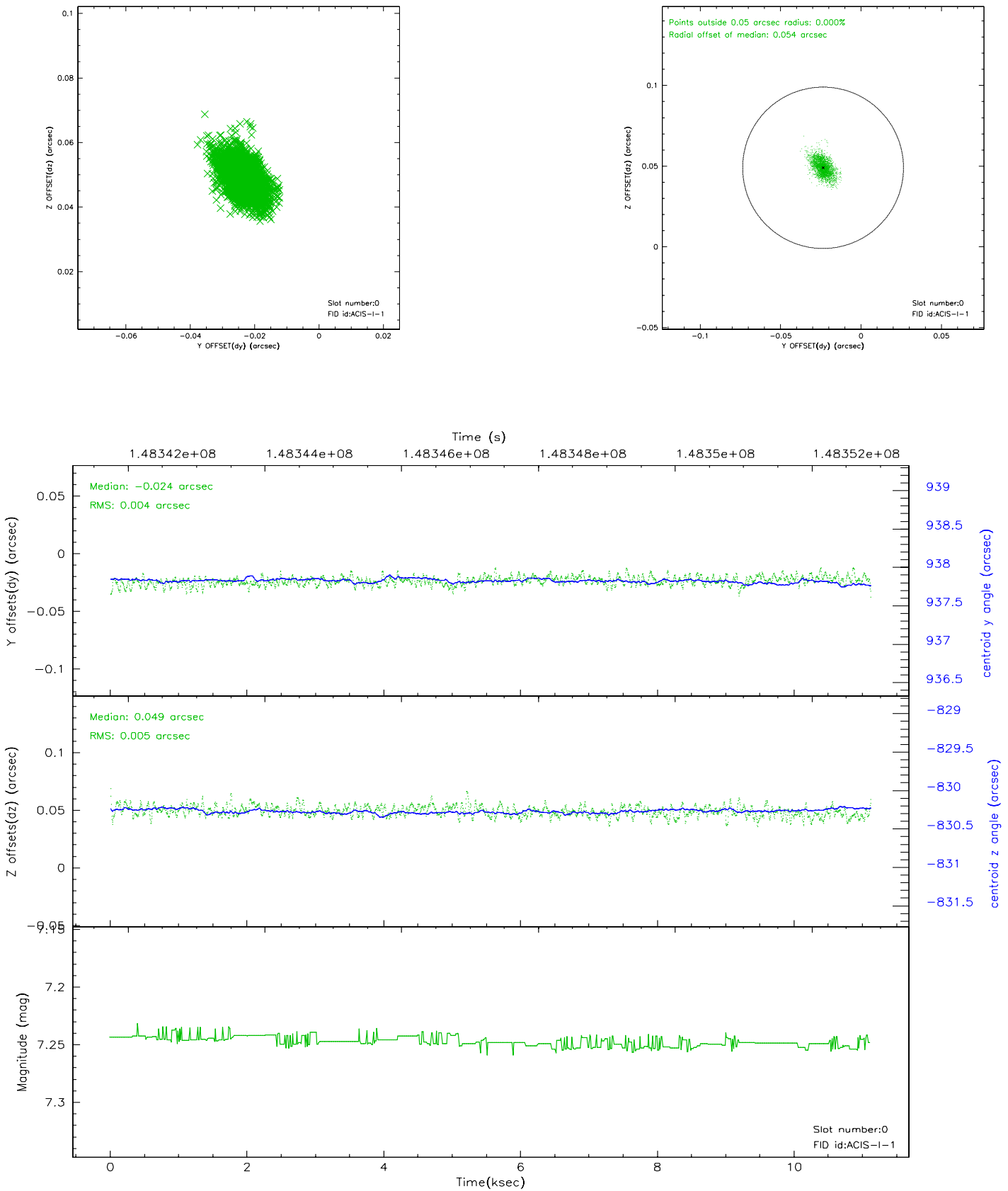


2.4.5 Slot 7

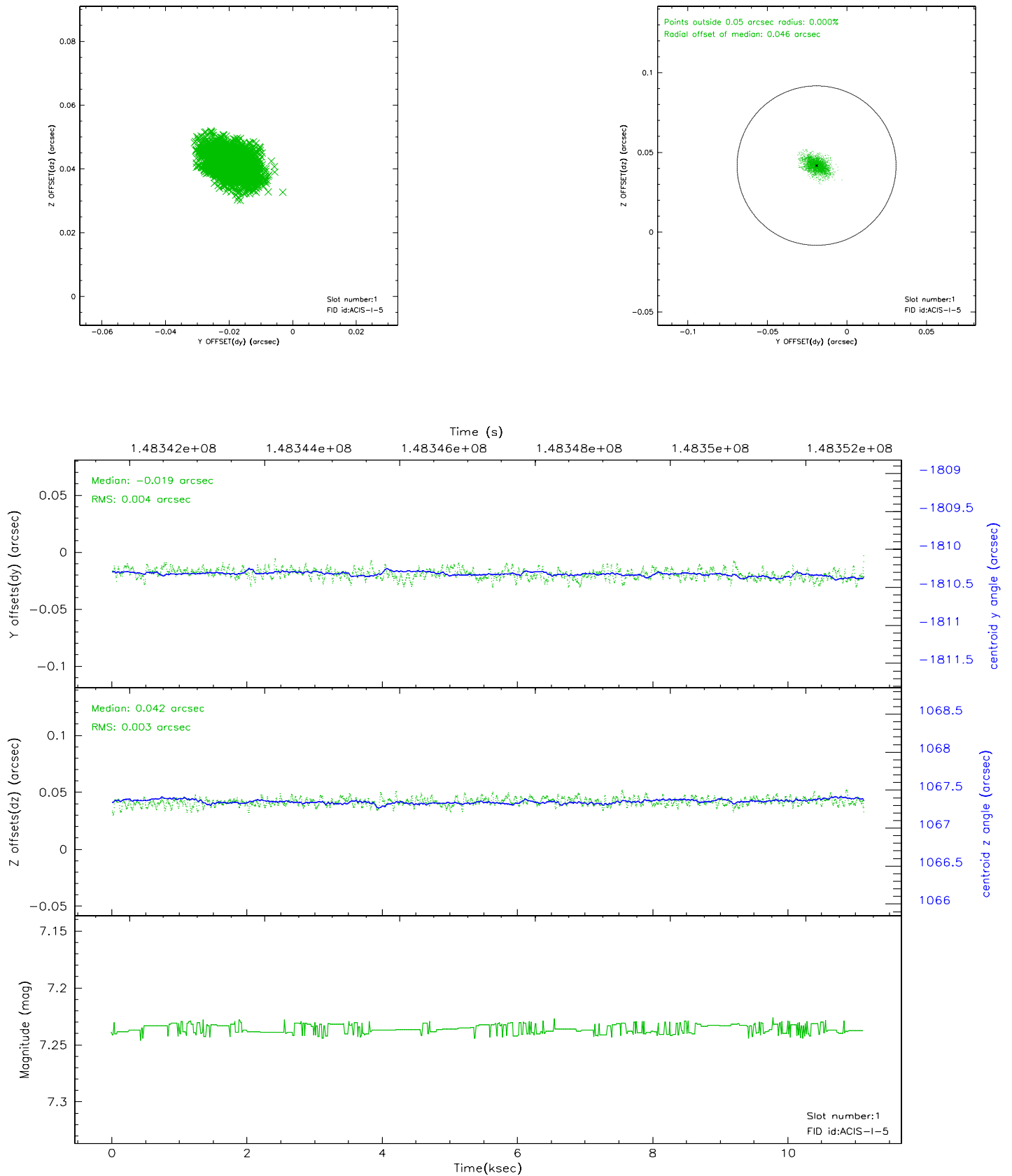


2.5 FID Slots

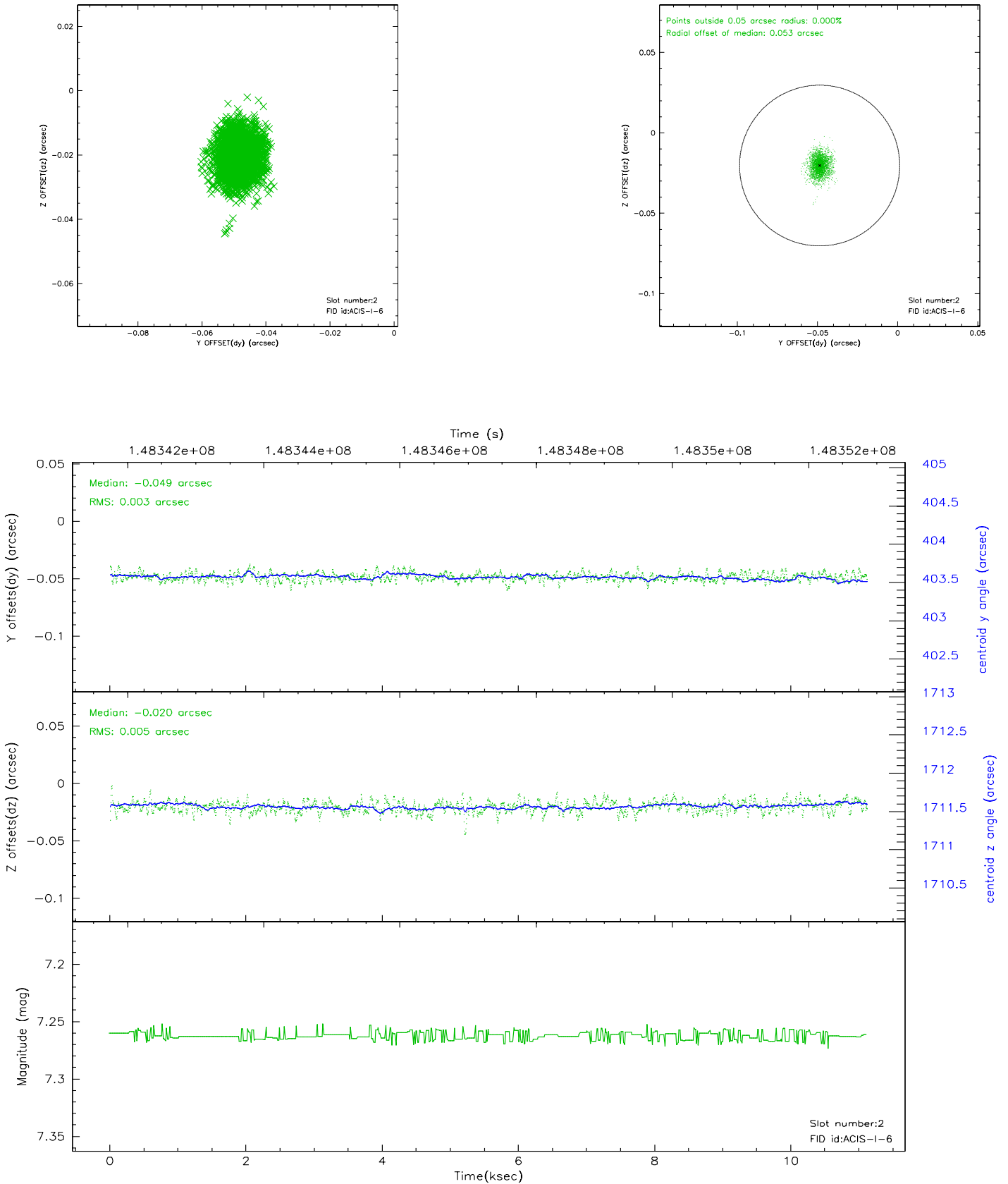
2.5.1 Slot 0



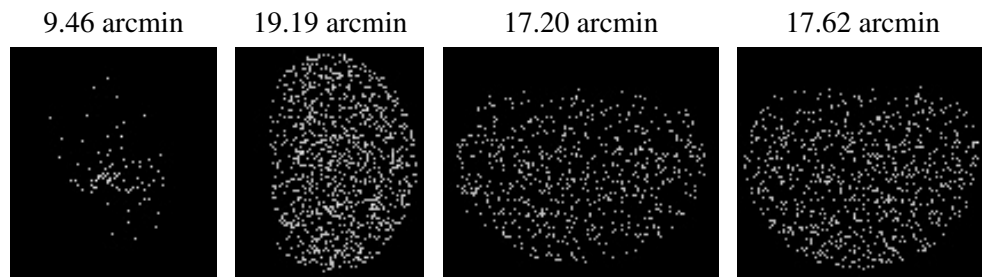
2.5.2 Slot 1



2.5.3 Slot 2



3 Point Sources



A Summary

A.1 Status

V&V Scientist	Jen Lauer
V&V Date (YYYY-MM-DD)	2006.10.04
V&V Edition	1
V&V Disposition and Status	OK
V&V Charge Time	9.967

A.2 Comments

Window constraint met.