

V&V Reference Report

L2 ASCDS Version : 7.6.9

Observation 2852 - L2 Version 001
Chandra X-Ray Center

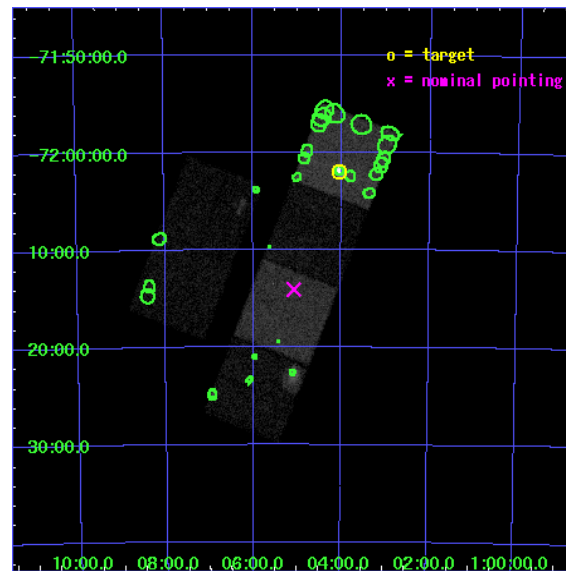
L2 Processing Date : Sep 19 2006

Contents

1	Front	2
2	OBI	3
2.1	OBI	3
2.1.1	Images	3
2.1.2	Bias	3
2.1.3	Parameters	4
2.1.4	Events	4
2.2	Compared Parameters	5
2.3	Aspect	6
2.4	Star Slots	9
2.4.1	Slot 3	9
2.4.2	Slot 4	10
2.4.3	Slot 5	11
2.4.4	Slot 6	12
2.4.5	Slot 7	13
2.5	FID Slots	14
2.5.1	Slot 0	14
2.5.2	Slot 1	15
2.5.3	Slot 2	16
3	Point Sources	17
A	Summary	18
A.1	Status	18
A.2	Comments	18

1 Front

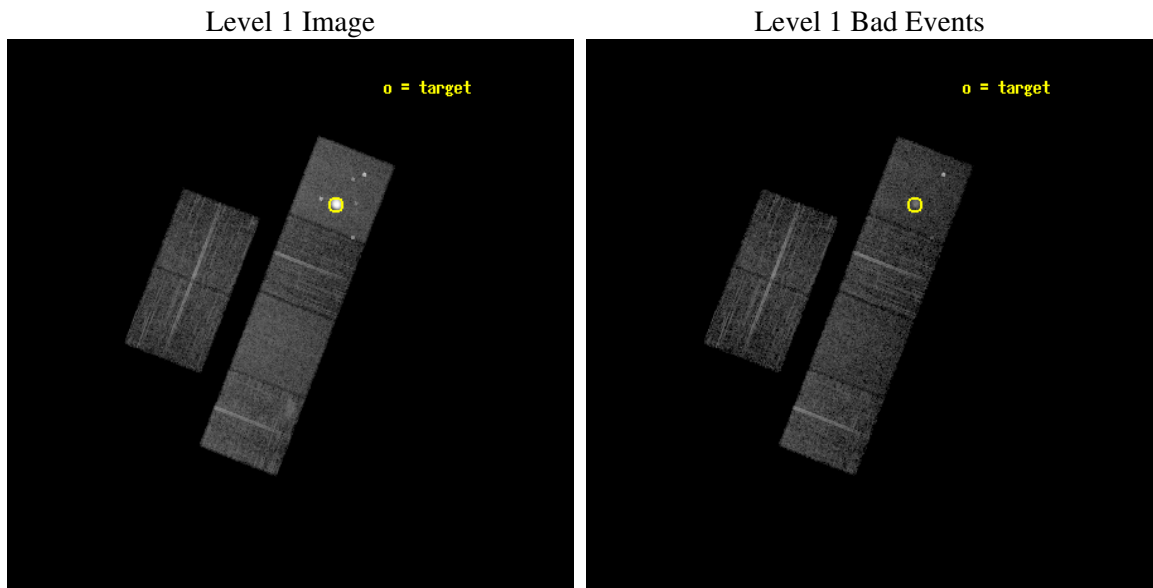
seq_num	590241
obs_id	2852
title	AO3B ACIS-S CALIBRATION OBSERVATIONS OF E0102-72
observer	Dr. CXC Calibration
object	E0102-72.3 [Chip S1, T=120, Offsets=13,0,0]
dtcycle	0
cycle	P
ra_targ	16.01
dec_targ	-72.032028
ra_nom	16.268340528087
dec_nom	-72.234551817248
roll_nom	111.22639180222
revision	2
ontime	7660.7999714613
livetime	7563.7943094427
ontime2	7660.7999714613
ontime3	7660.7999714613
ontime5	7660.7999714613
ontime6	7660.7999714613
ontime7	7660.7999714613
ontime8	7657.5590012074
l2events	122999



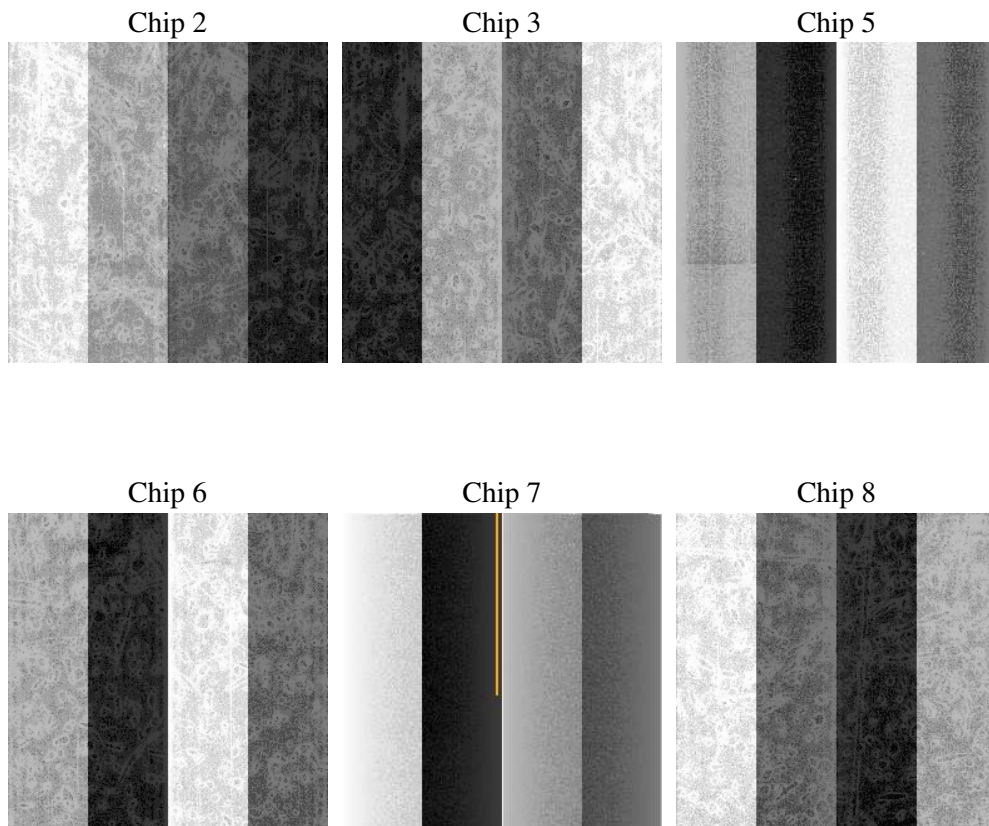
2 OBI

2.1 OBI

2.1.1 Images



2.1.2 Bias



2.1.3 Parameters

obi_num	0
ascdsver	7.6.9
caldbver	3.2.3
date	2006-09-19T19:03:32
revision	2

sched_exp_time	7900.000000
ontime	7664.9658535719
ontime2	7664.9658535719
ontime3	7664.9658336639
ontime5	7664.9658535719
ontime6	7664.9658336639
ontime7	7664.9658535719
ontime8	7661.7247438133
l1events	401261

2.1.4 Events

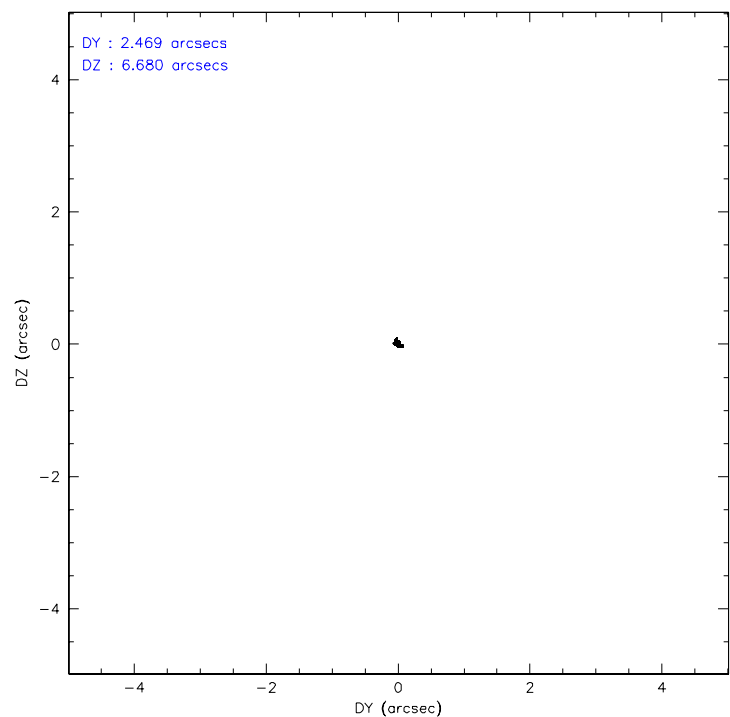
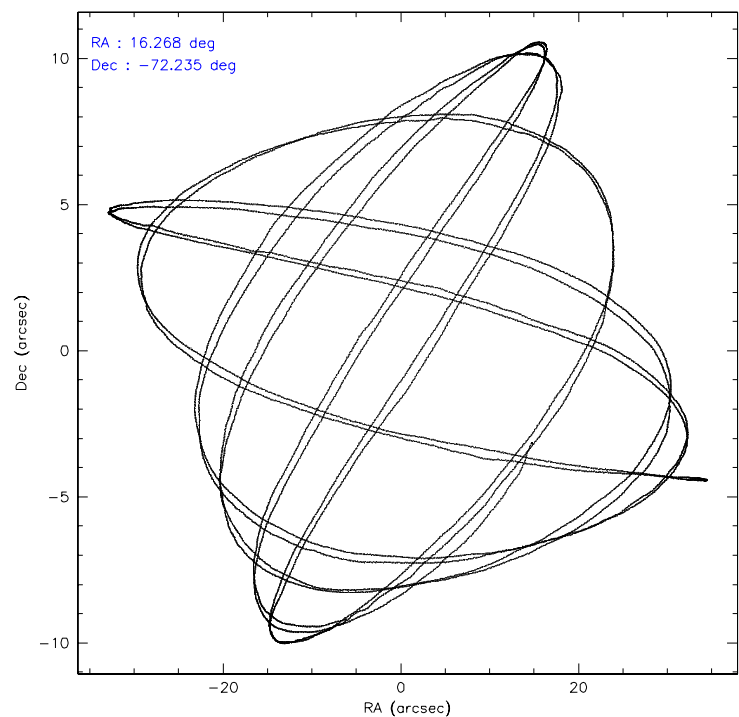
	ccd 2	ccd 3	ccd 5	ccd 6	ccd 7	ccd 8
level 1 events	51154	47270	123075	49240	64322	66200
rejected events	45287	41701	41919	42790	39588	51235
rejected %	88%	88%	34%	86%	61%	77%

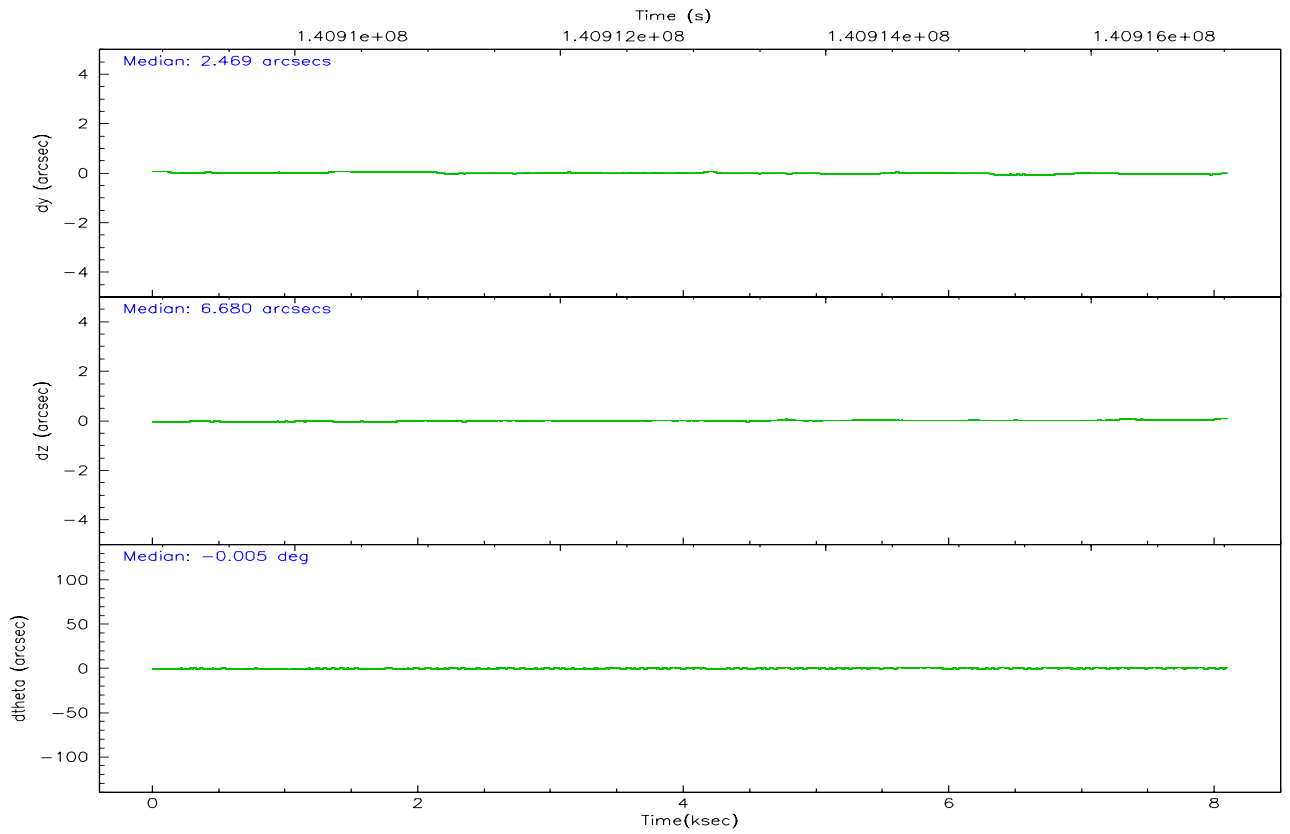
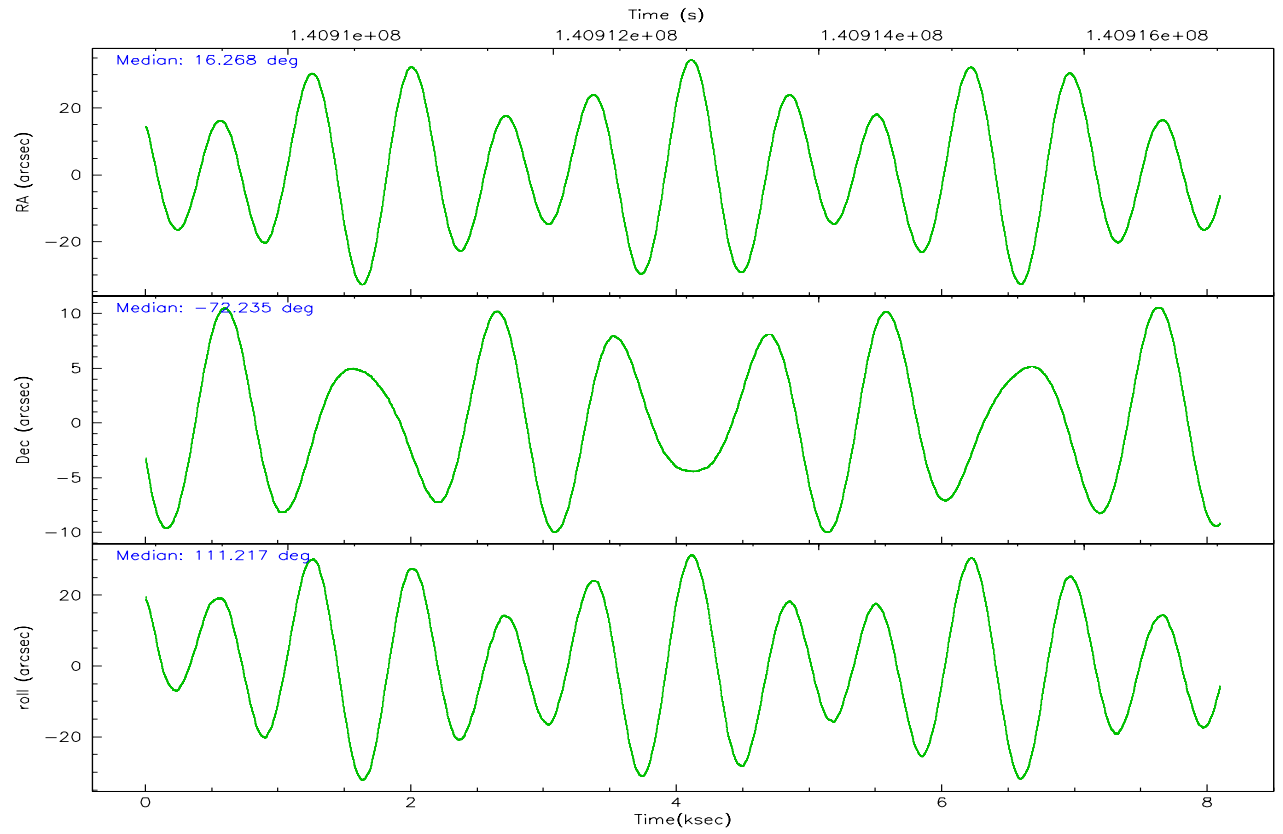
	ccd 2	ccd 3	ccd 5	ccd 6	ccd 7	ccd 8
grade 0 events	2607	2374	25052	2998	1620	6218
	5%	5%	20%	6%	2%	9%
grade 1 events	27	12	195	20	45	48
	0%	0%	0%	0%	0%	0%
grade 2 events	1190	1144	24337	1200	6164	2831
	2%	2%	19%	2%	9%	4%
grade 3 events	542	551	4911	583	1374	1436
	1%	1%	3%	1%	2%	2%
grade 4 events	500	502	4977	554	1251	1357
	0%	1%	4%	1%	1%	2%
grade 5 events	1726	2020	4040	2205	4315	2707
	3%	4%	3%	4%	6%	4%
grade 6 events	1033	999	21919	1119	14338	3125
	2%	2%	17%	2%	22%	4%
grade 7 events	43529	39668	37644	40561	35215	48478
	85%	83%	30%	82%	54%	73%

2.2 Compared Parameters

Parameter	Planned	Actual	Parameter	Planned	Actual
Instrument	ACIS	ACIS	Obspar format version number	6	6
Detector	ACIS-235678	ACIS-235678	Obspar file type	PREDICTED	ACTUAL
Grating	NONE	NONE	Obspar update status	NONE	UPDATED
Data mode	FAINT	FAINT	Number of optional ACIS chips dropped	0	0
Observation mode	POINTING	POINTING	On-chip summing requested	N	N
Pointing RA	16.338887	16.26834052808678	Subarray requested	NONE	NONE
Pointing Dec	-72.251307	-72.23455181724849	Alternating exposures requested	N	N
Pointing Roll	111.136952	111.2263918022156	Primary exposure time	0.000000	3.2
Window start time	139276864.184000	139276864.184000			
Window stop time	141782464.184000	141782464.184000			
SIM focus pos (mm)	-0.684267	-0.6828225247311905			
SIM defocus (mm)	0	0.001444936568705701			
SIM translation stage pos (mm)	-190.132523	-190.1400660498719			
SIM translation stage offset (mm)	0	0.00754346686406393			
Observation start time	140909127.184000	140908676.46962			
Observation start date	2002-06-19T21:24:23	2002-06-19T21:17:56			
Observation end time	140917027.184000	140917519.65748			
Observation end date	2002-06-19T23:36:03	2002-06-19T23:45:19			
Read mode	TIMED	TIMED			

2.3 Aspect



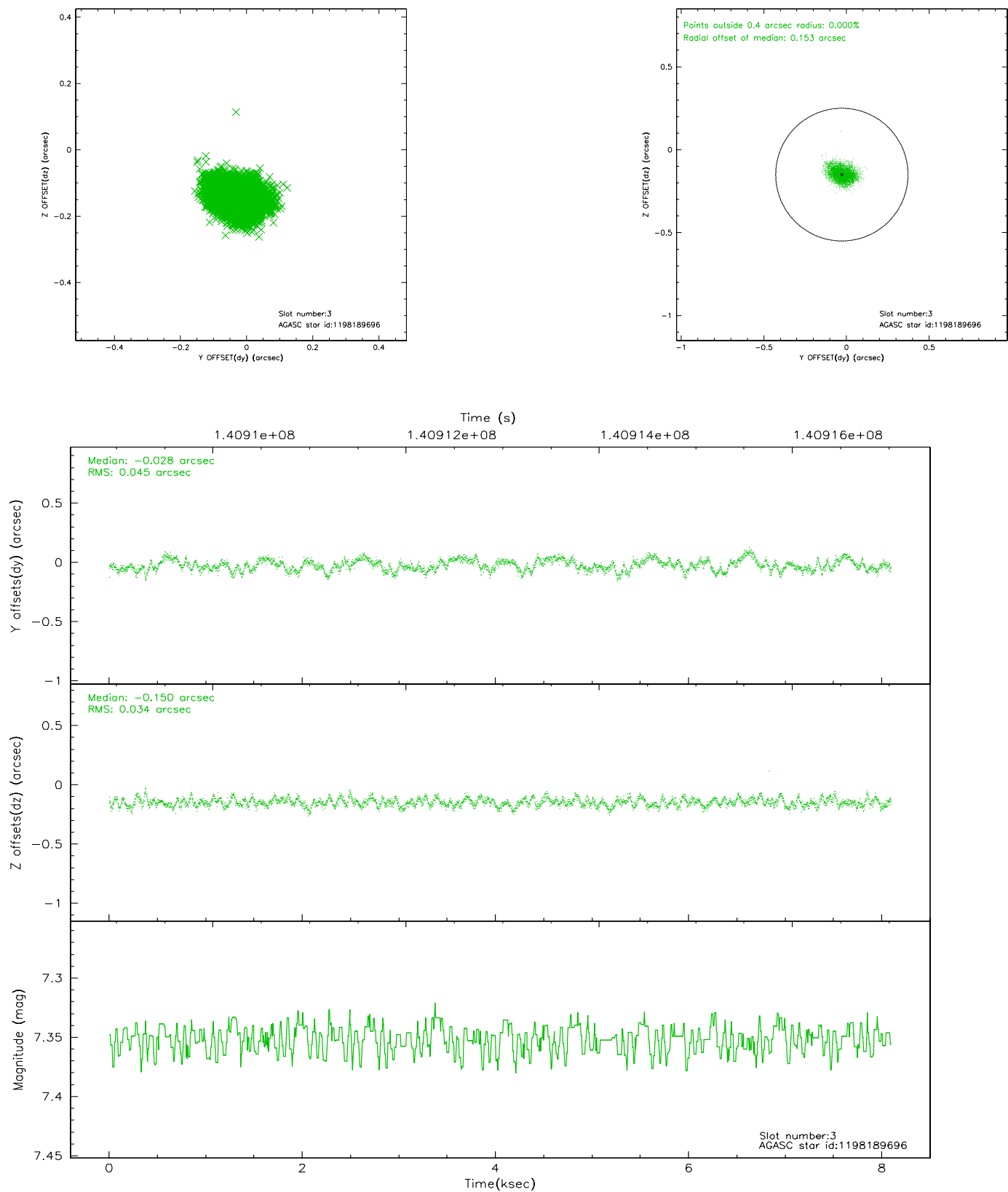


Slot Statistics

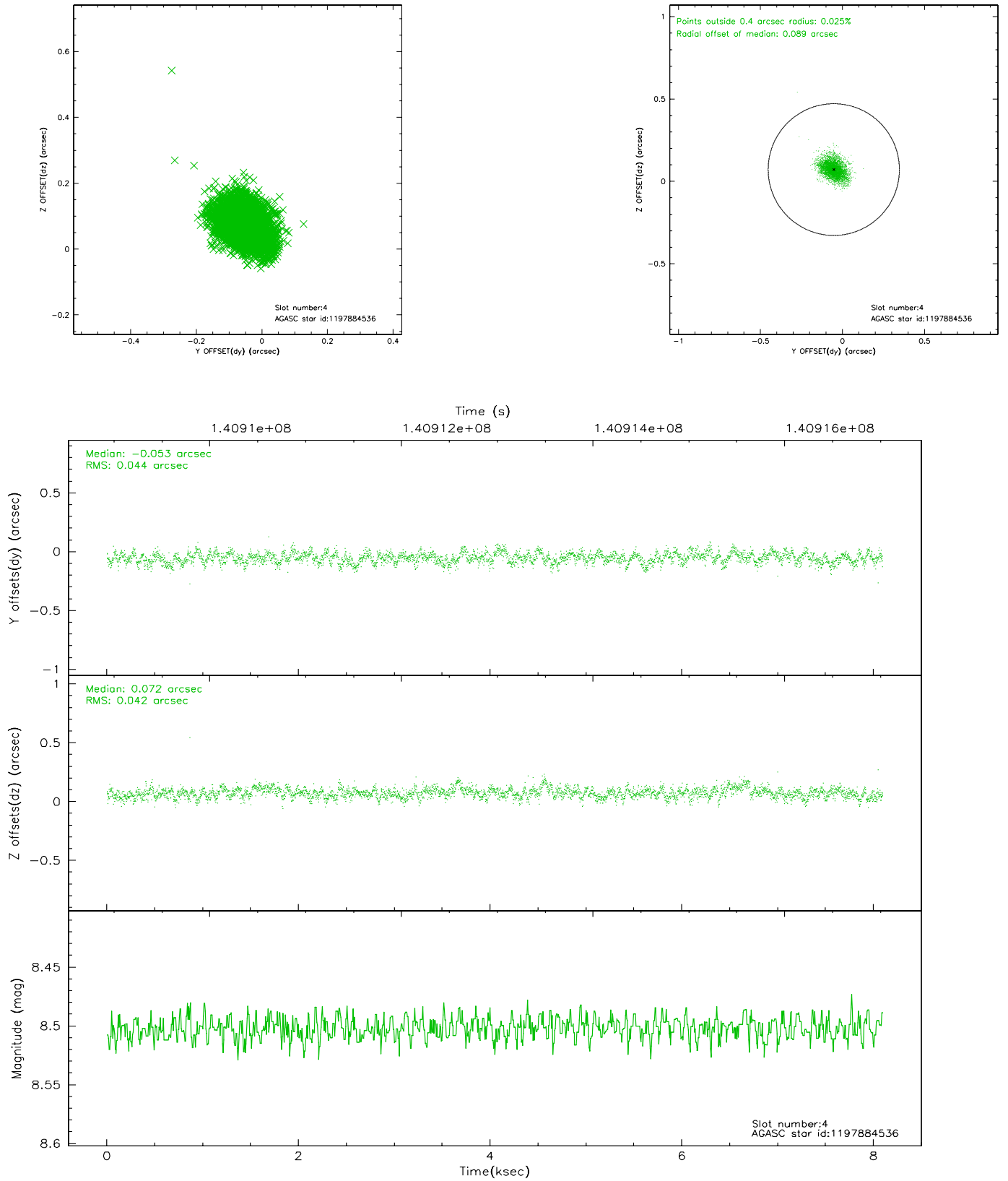
slot	status	id	mag	n_pts	med_dy	med_dz	dr1	dr2	ra	dec	mean_y	mean_z
0	FID	ACIS-S-2	7.12	1974	-0.014	0.035	0.007	0.012	0.000000	0.000000	-755.09	-1727.81
1	FID	ACIS-S-4	7.20	1974	-0.073	-0.002	0.005	0.010	0.000000	0.000000	2157.80	179.95
2	FID	ACIS-S-5	7.24	1974	0.056	-0.024	0.007	0.011	0.000000	0.000000	-1806.99	174.35
3	GUIDE	1198189696	7.35	3949	-0.028	-0.150	0.060	0.096	15.223750	-72.697522	-1078.12	1696.14
4	GUIDE	1197884536	8.50	3949	-0.053	0.072	0.064	0.105	17.160729	-71.835289	1058.69	-1397.78
5	GUIDE	1198283128	7.61	3949	-0.042	0.089	0.078	0.120	17.272580	-72.642428	-1681.53	-425.65
6	GUIDE	1197750640	9.73	3946	0.083	-0.073	0.119	0.186	15.758835	-72.088048	776.86	387.79
7	GUIDE	1197749416	10.28	3941	0.040	0.062	0.136	0.233	13.610513	-71.871242	2313.66	2381.24

2.4 Star Slots

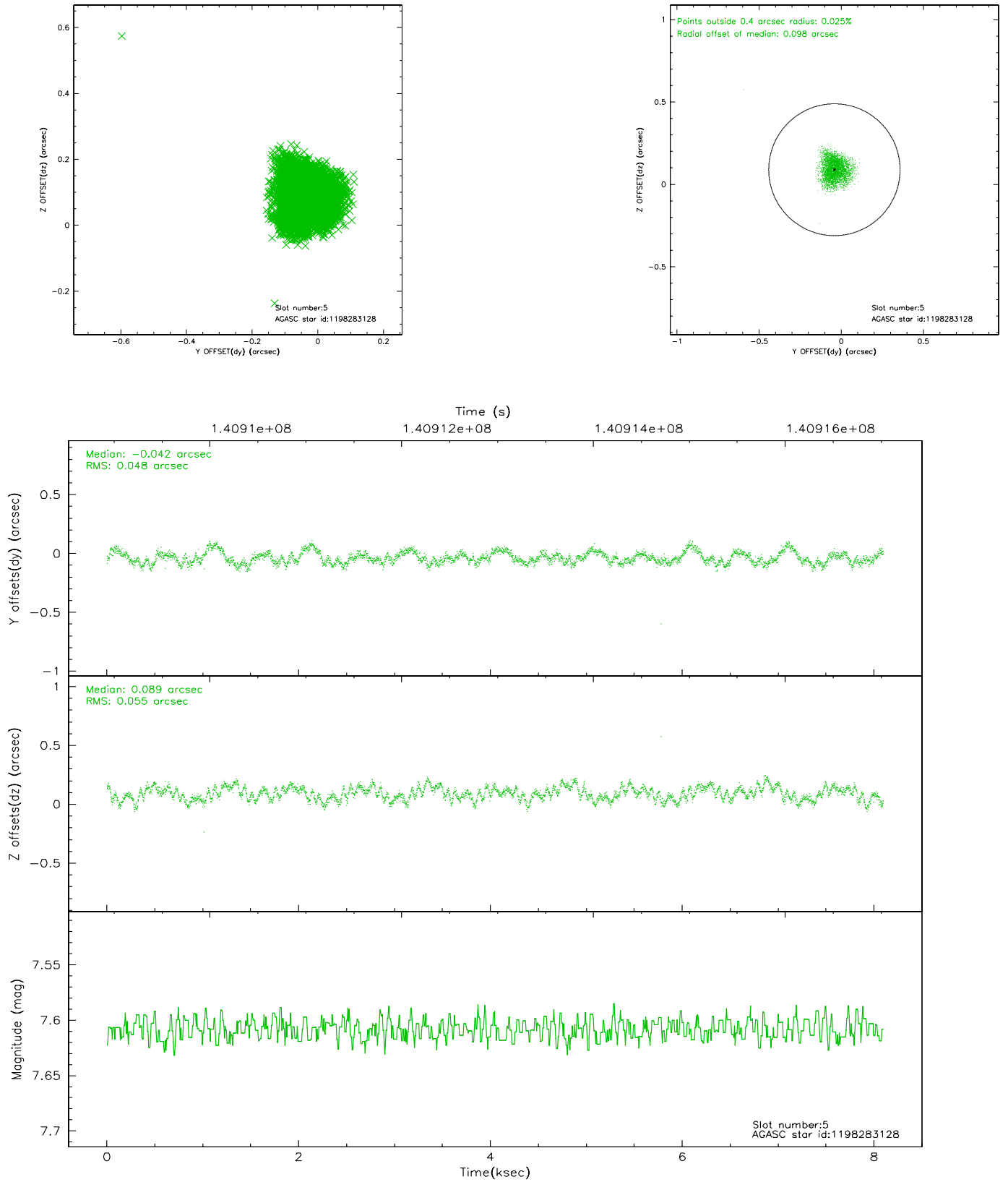
2.4.1 Slot 3



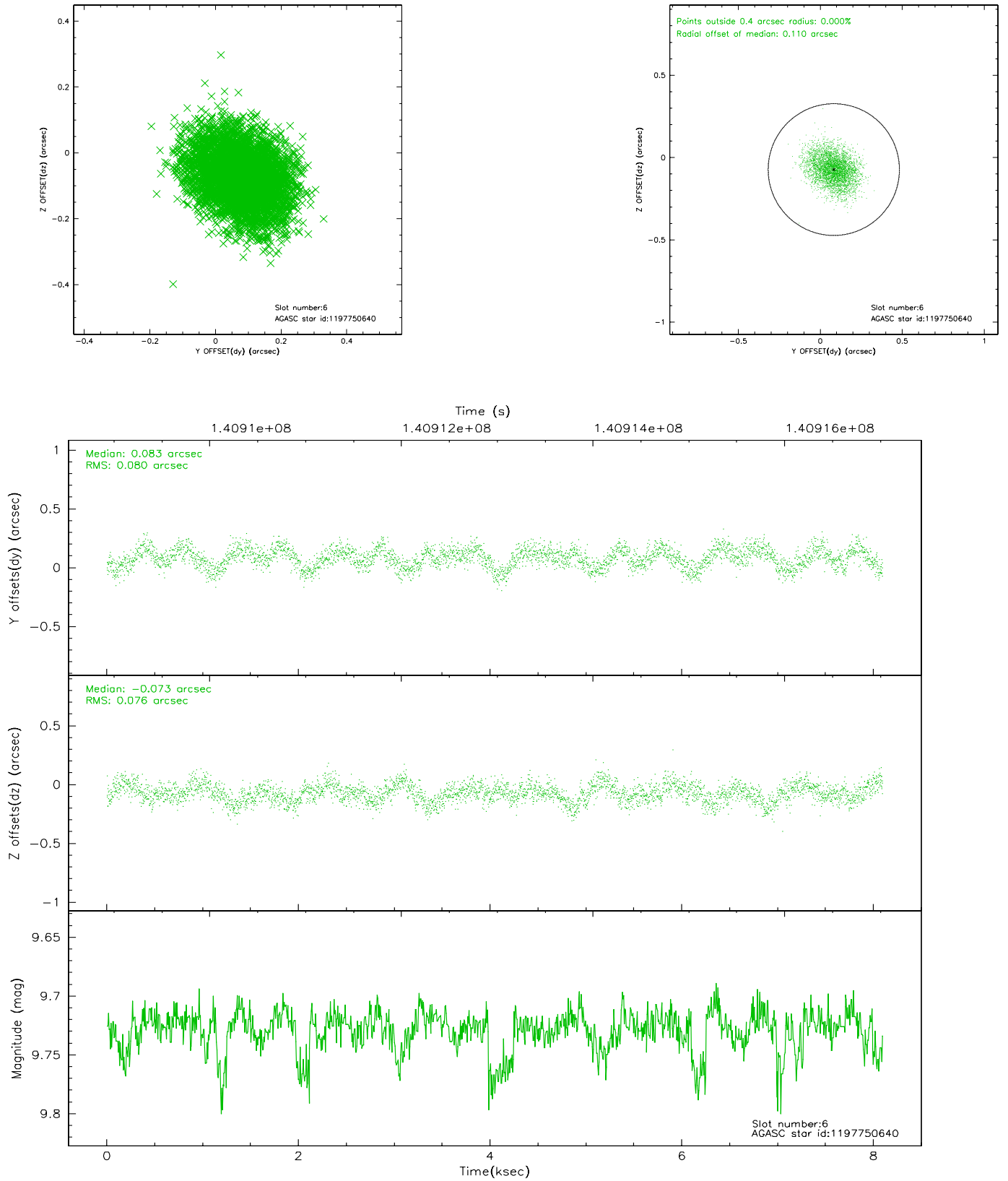
2.4.2 Slot 4



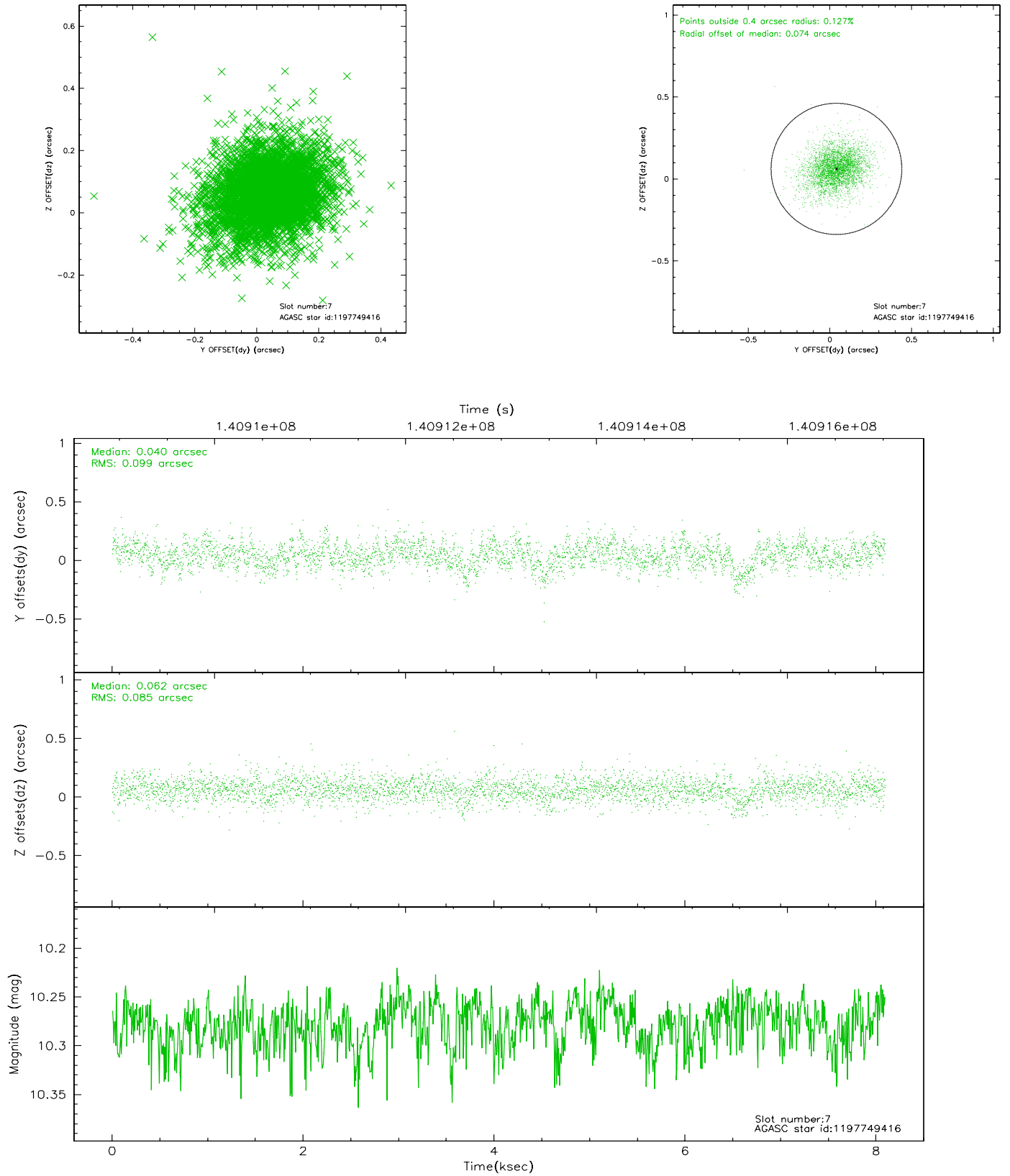
2.4.3 Slot 5



2.4.4 Slot 6

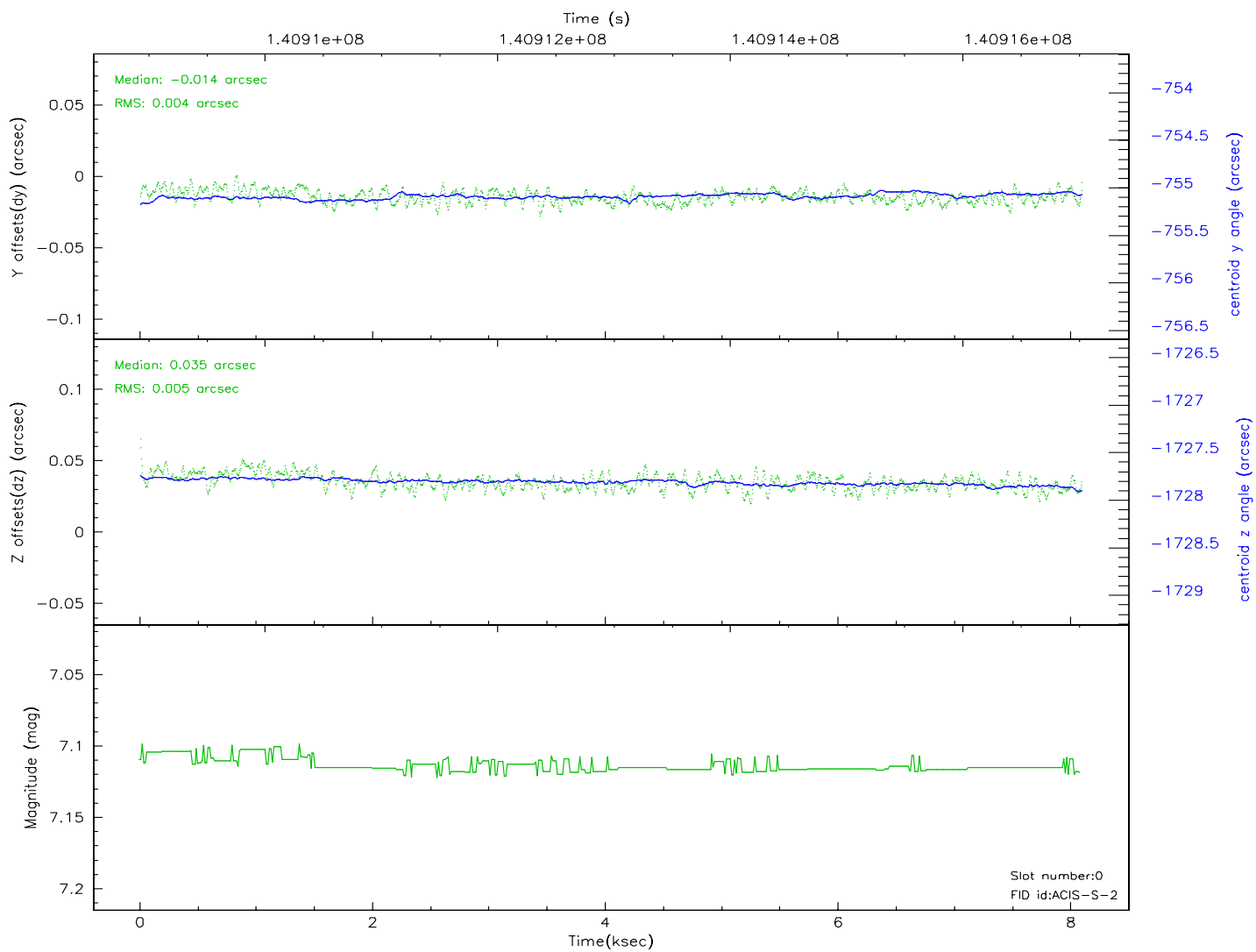
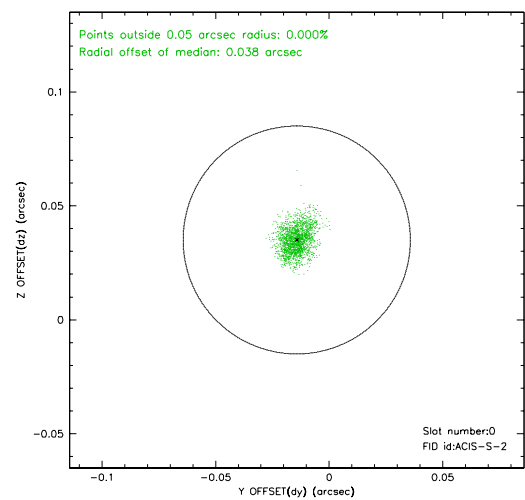
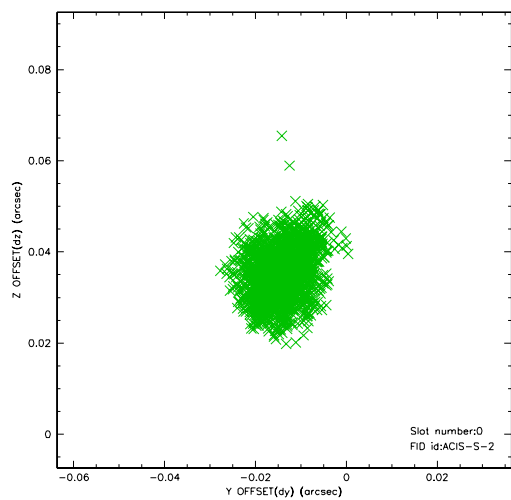


2.4.5 Slot 7

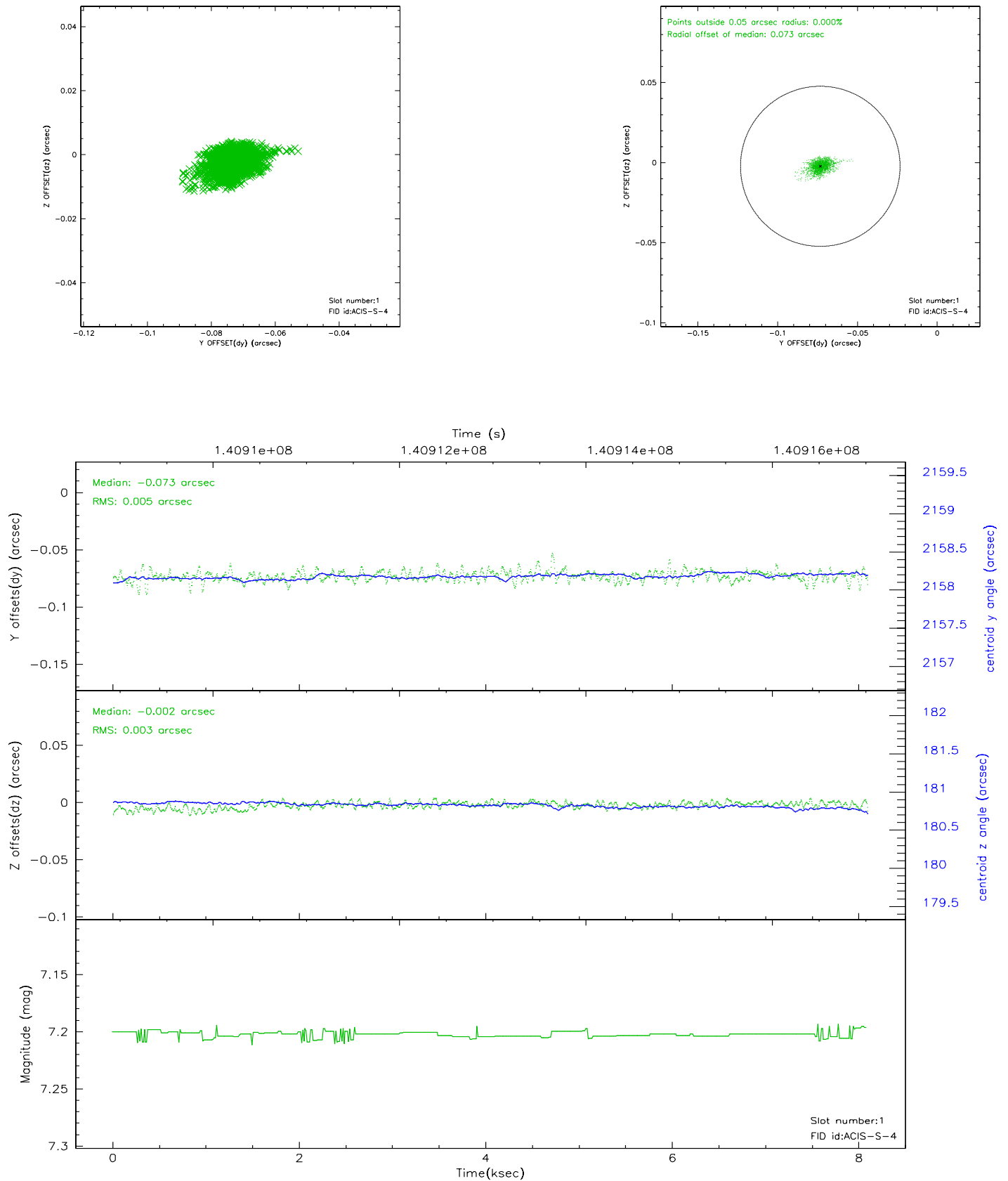


2.5 FID Slots

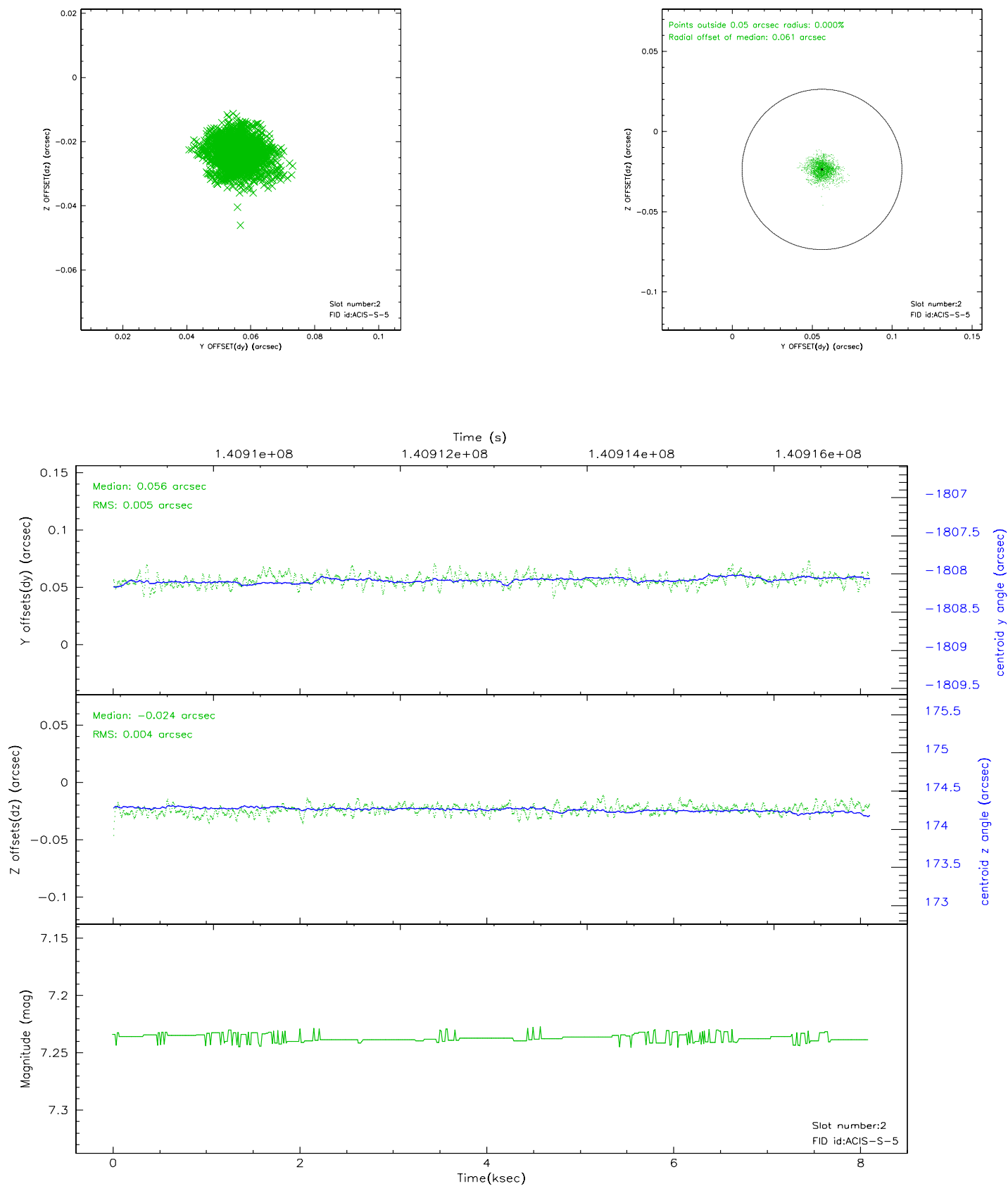
2.5.1 Slot 0



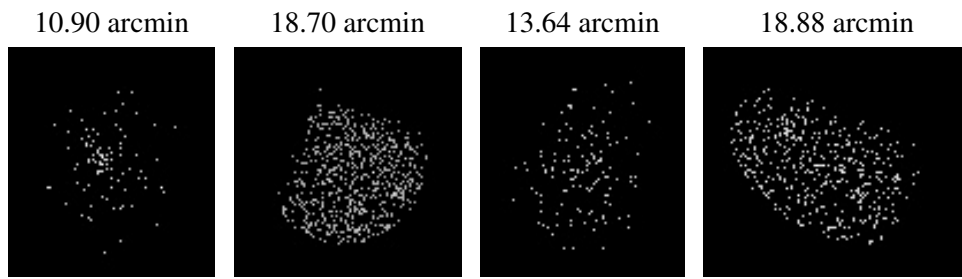
2.5.2 Slot 1



2.5.3 Slot 2



3 Point Sources



A Summary

A.1 Status

V&V Scientist	Jen Lauer
V&V Date (YYYY-MM-DD)	2006.09.20
V&V Edition	1
V&V Disposition and Status	OK
V&V Charge Time	7.664

A.2 Comments

Window constraint met.