

V&V Reference Report

L2 ASCDS Version : 8.4.5

Observation 2849 - L2 Version 3
Chandra X-Ray Center

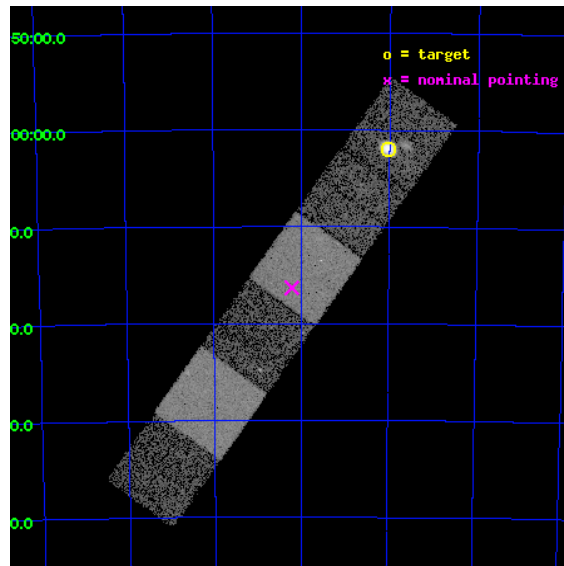
L2 Processing Date : Sep 28 2012

Contents

1	Front	2
2	OBI	3
2.1	OBI	3
2.1.1	Images	3
2.1.2	Bias	3
2.1.3	Parameters	4
2.1.4	Events	4
2.2	Compared Parameters	5
2.3	Aspect	6
2.4	Star Slots	9
2.4.1	Slot 3	9
2.4.2	Slot 4	10
2.4.3	Slot 5	11
2.4.4	Slot 6	12
2.4.5	Slot 7	13
2.5	FID Slots	14
2.5.1	Slot 0	14
2.5.2	Slot 1	15
2.5.3	Slot 2	16
A	Summary	17
A.1	Status	17
A.2	Comments	17

1 Front

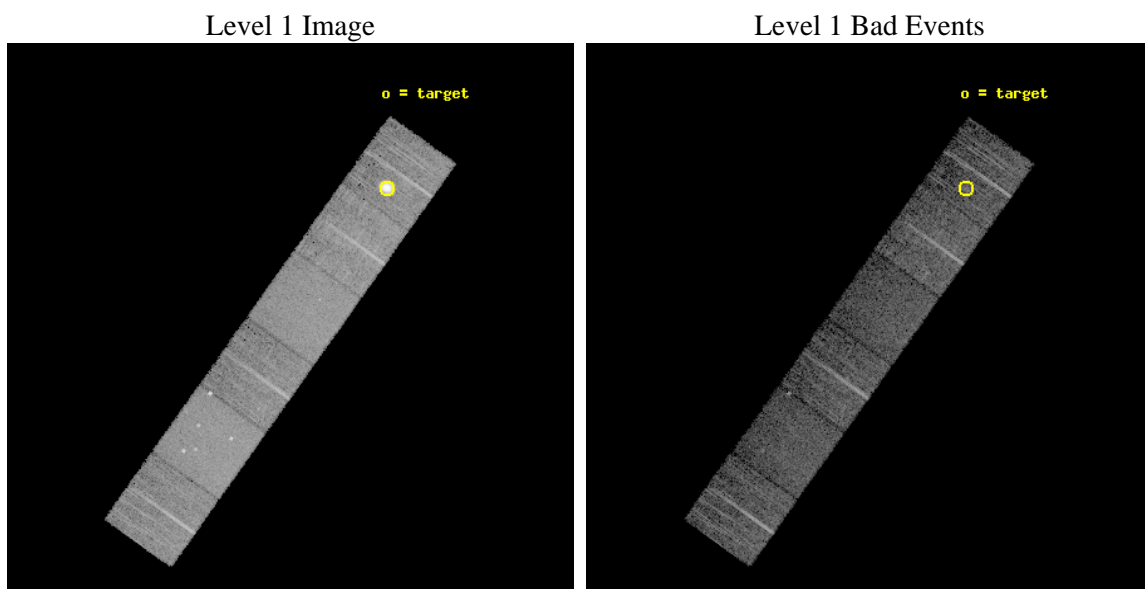
seq_num	590238	Sequence number
obs_id	2849	Observation id
title	AO3A ACIS-S CALIBRATION OBSERVATIONS OF E0102-72	Proposal title
observer	Dr. CXC Calibration	Principal investigator
object	E0102-72.3 [Chip S5, T=120, Offsets=-17,0,0]	Source name
dtcycle	0	
cycle	P	events from which exps? Prim/Second/Both
ra_targ	16.01	Observer's specified target RA [deg]
dec_targ	-72.032028	Observer's specified target Dec [deg]
ra_nom	16.553480625983	Nominal RA [deg]
dec_nom	-72.272079115819	Nominal Dec [deg]
roll_nom	305.50363353749	Nominal Roll [deg]
revision	3	Processing version of data
ontime	7302.400006786	Sum of GTIs [s]
livetime	7209.9326209227	Livetime [s]
ontime4	7302.400006786	Sum of GTIs [s]
ontime5	7302.400006786	Sum of GTIs [s]
ontime6	7302.400006786	Sum of GTIs [s]
ontime7	7302.400006786	Sum of GTIs [s]
ontime8	7302.400006786	Sum of GTIs [s]
ontime9	7302.400006786	Sum of GTIs [s]
l2events	95813	Number of level 2 events



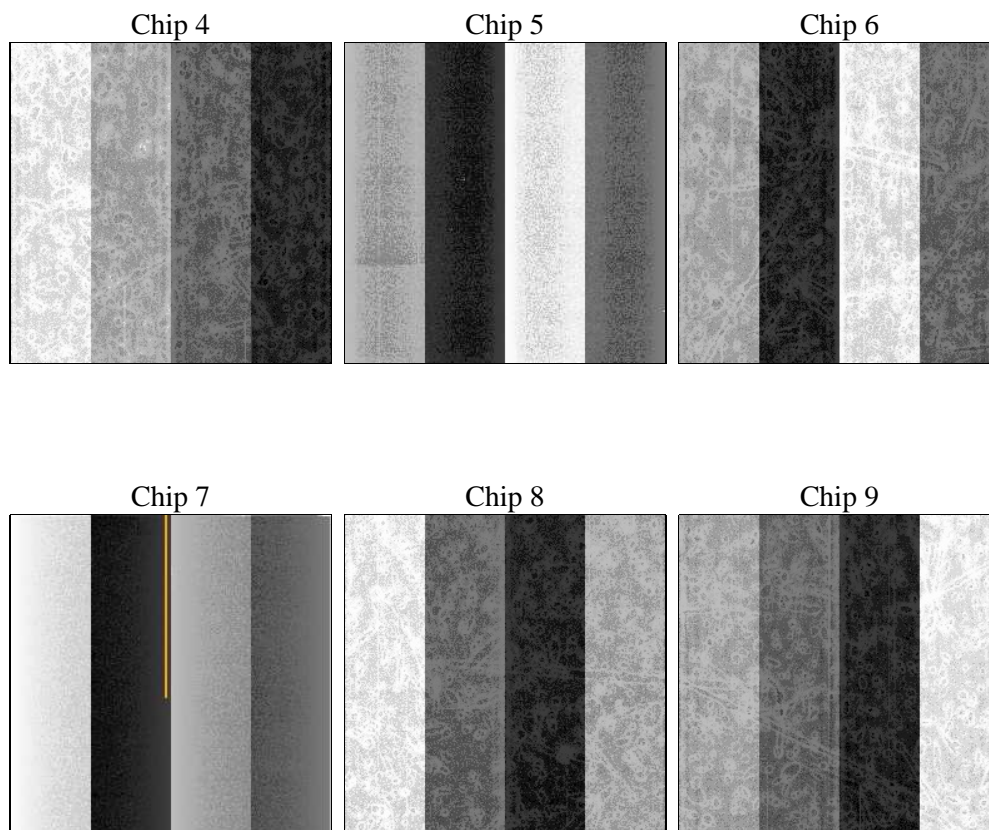
2 OBI

2.1 OBI

2.1.1 Images



2.1.2 Bias



2.1.3 Parameters

obi_num	1	Obi number	sched_exp_time	7543.286000	[s] Scheduled observation exposure time
ascdsver	8.4.5	Processing system revision	ontime	7302.400006786	Sum of GTIs [s]
caldsver	4.5.2	 	ontime4	7302.400006786	Sum of GTIs [s]
date	2012-09-28T22:18:55	Date and time of file creation	ontime5	7302.400006786	Sum of GTIs [s]
revision	3	Processing version of data	ontime6	7302.400006786	Sum of GTIs [s]
			ontime7	7302.400006786	Sum of GTIs [s]
			ontime8	7302.400006786	Sum of GTIs [s]
			ontime9	7302.400006786	Sum of GTIs [s]
			l1events	359778	Number of level 1 events

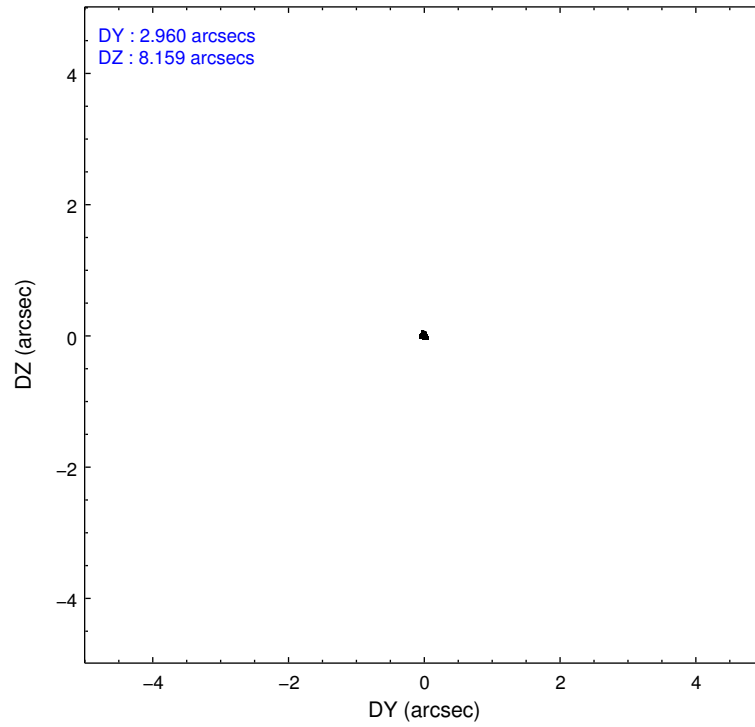
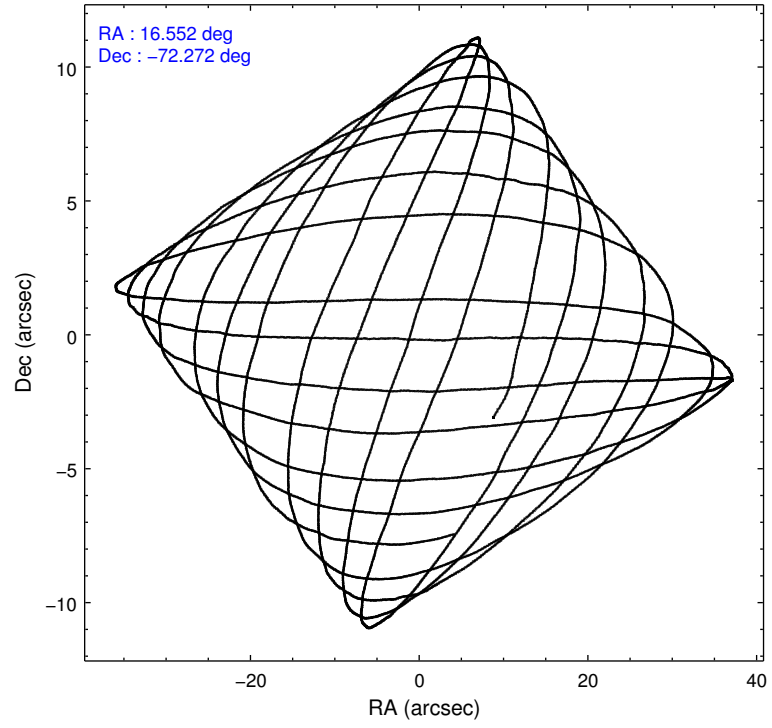
2.1.4 Events

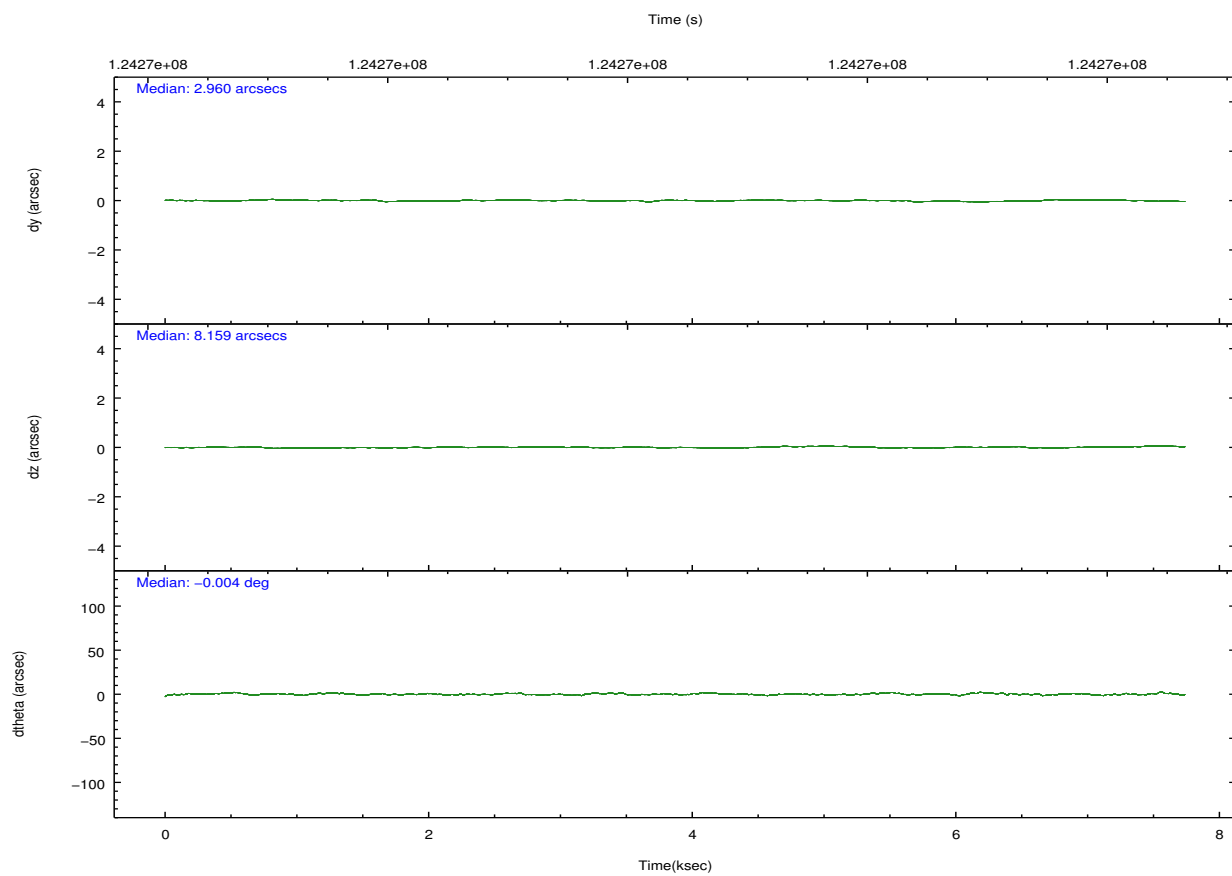
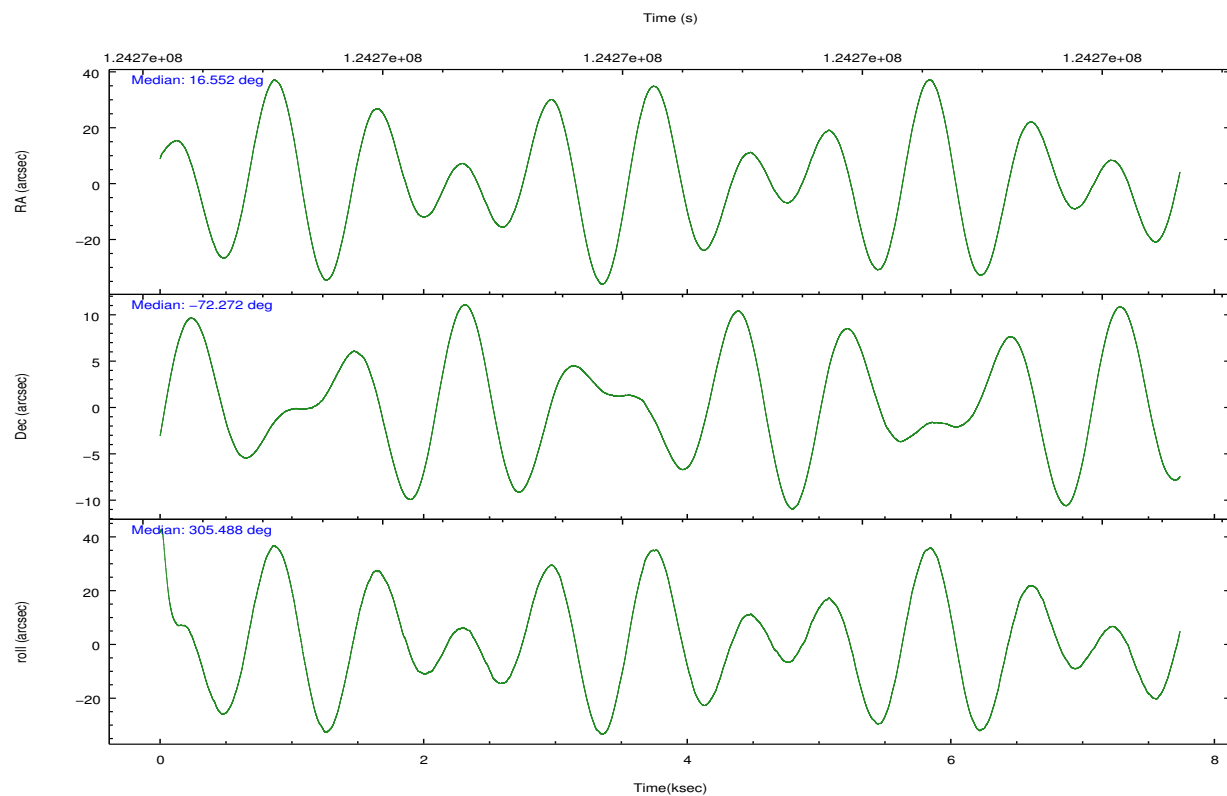
	ccd 4	ccd 5	ccd 6	ccd 7	ccd 8	ccd 9		ccd 4	ccd 5	ccd 6	ccd 7	ccd 8	ccd 9
level 1 events	51312	68601	46999	61456	62226	69184	grade 0 events	2350	4742	2463	2740	4186	21659
rejected events	45555	36267	41231	35192	49892	41906		4%	6%	5%	4%	6%	31%
rejected %	88%	52%	87%	57%	80%	60%	grade 1 events	22	258	19	53	41	91
								0%	0%	0%	0%	0%	0%
							grade 2 events	1433	8956	1093	5214	2621	2626
								2%	13%	2%	8%	4%	3%
							grade 3 events	498	1261	546	2340	1215	850
								0%	1%	1%	3%	1%	1%
							grade 4 events	496	1269	563	2283	1128	886
								0%	1%	1%	3%	1%	1%
							grade 5 events	1670	4980	2021	5774	2378	1962
								3%	7%	4%	9%	3%	2%
							grade 6 events	983	16120	1105	13696	3198	1274
								1%	23%	2%	22%	5%	1%
							grade 7 events	43860	31015	39189	29356	47459	39836
								85%	45%	83%	47%	76%	57%

2.2 Compared Parameters

Parameter	Planned	Actual	Parameter	Planned	Actual
Instrument	ACIS	ACIS	Obspar format version number	7	7
Detector	ACIS-456789	ACIS-456789	Obspar file type	PREDICTED	ACTUAL
Grating	NONE	NONE	Obspar update status	NONE	UPDATED
Data mode	FAINT	FAINT	Number of optional ACIS chips dropped	0	0
Observation mode	POINTING	POINTING	On-chip summing requested	N	N
[deg] Pointing RA	16.471742	16.55348062598257	Subarray requested	NONE	NONE
[deg] Pointing Dec	-72.261112	-72.27207911581903	Alternating exposures requested	N	N
[deg] Pointing Roll	305.269161	305.5036335374941	[s] Primary exposure time	0.000000	3.2
[s] Window start time (MET)	123552064.184000	123552064.184000			
[s] Window stop time (MET)	126144064.184000	126144064.184000			
[mm] SIM focus pos	-0.684267	-0.6828225247311905			
[mm] SIM defocus	0	0.001444936568705701			
[mm] SIM translation stage pos	-190.132523	-190.1425803651734			
[mm] SIM translation stage offset	0	0.01005778216563158			
[s] Observation start time (MET)	124266724.184000	124266347.85812			
Observation start date	2001-12-09T06:31:00	2001-12-09T06:25:47			
[s] Observation end time (MET)	124274267.184000	124274581.68345			
Observation end date	2001-12-09T08:36:43	2001-12-09T08:43:01			
Read mode	TIMED	TIMED			

2.3 Aspect



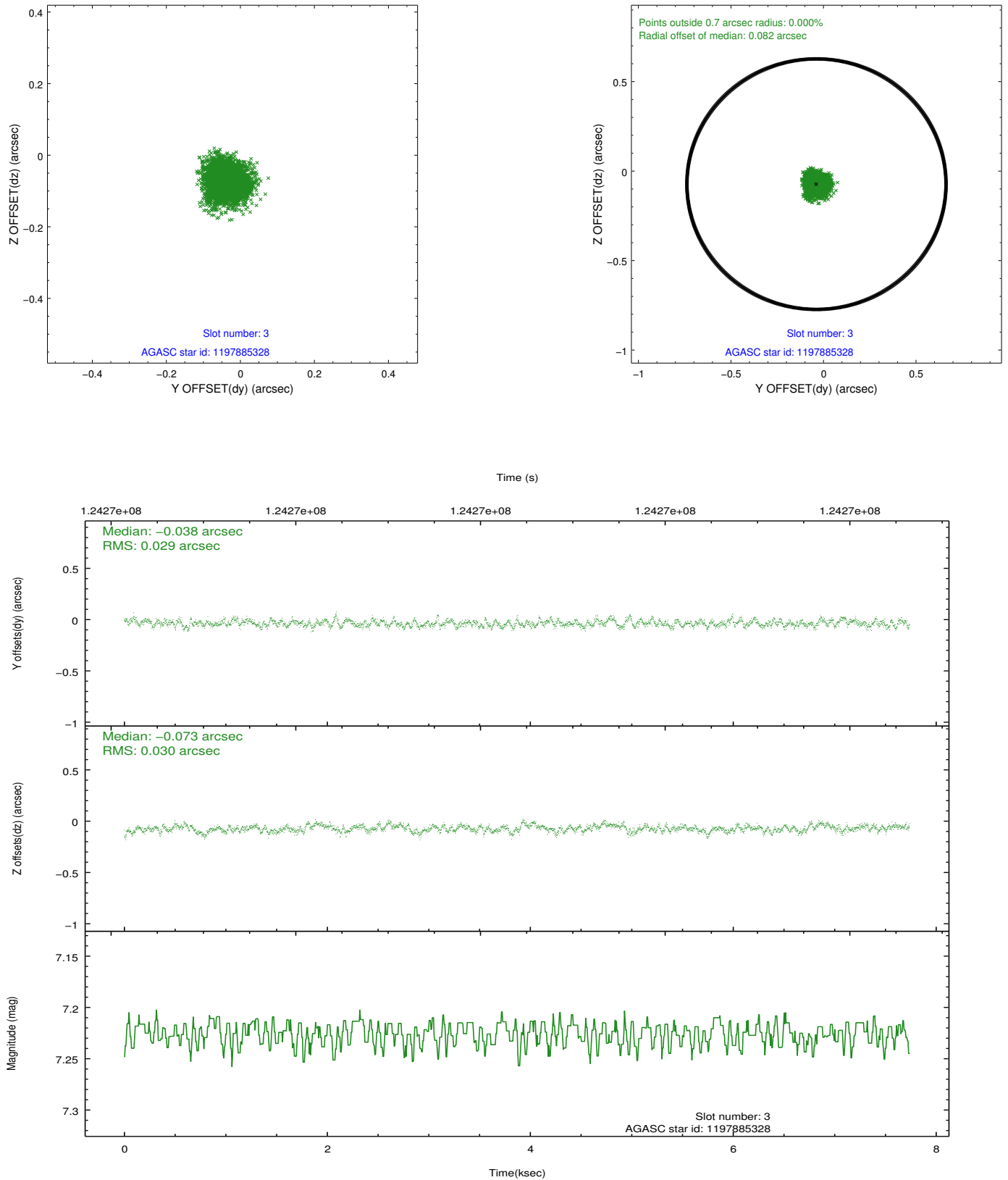


Slot Statistics

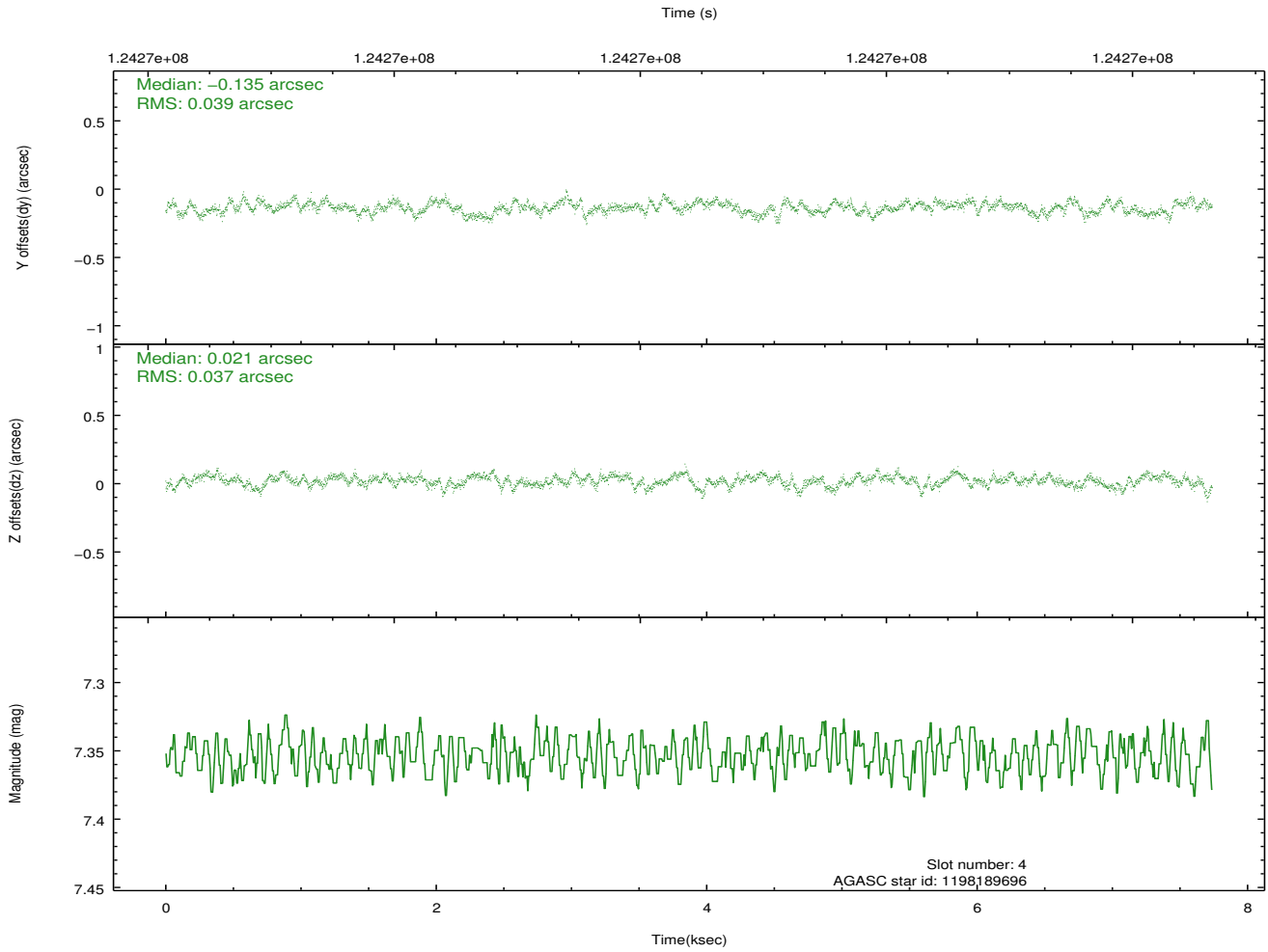
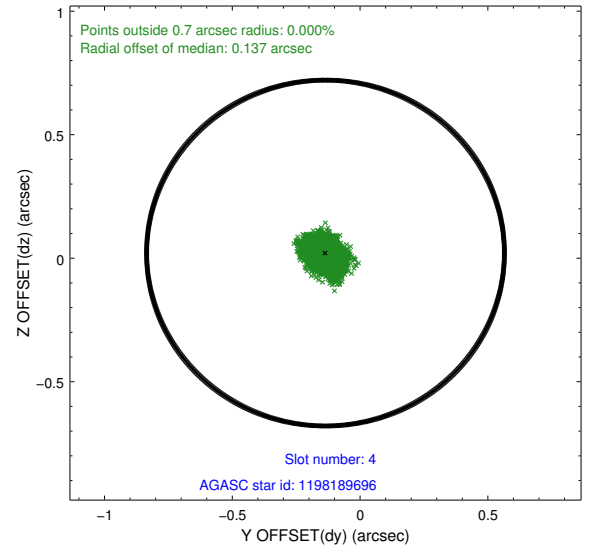
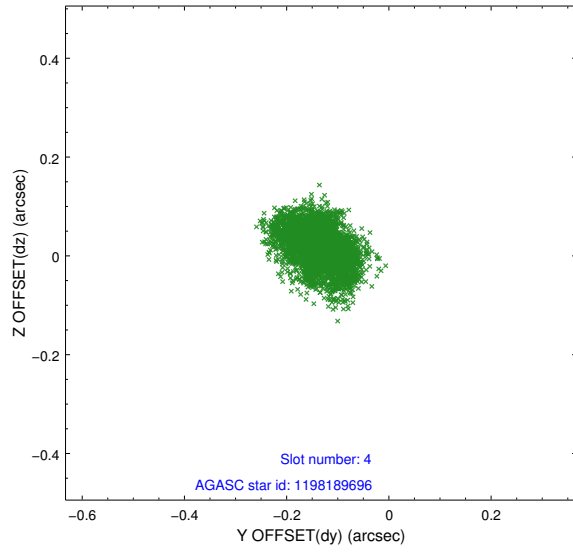
slot	status	id	mag	n_pts	med_dy	med_dz	dr1	dr2	ra	dec	mean_y	mean_z
0	FID	ACIS-S-2	7.11	1887	-0.008	0.004	0.013	0.022	0.000000	0.000000	-755.61	-1729.30
1	FID	ACIS-S-4	7.20	1887	-0.039	0.002	0.012	0.019	0.000000	0.000000	2157.31	178.42
2	FID	ACIS-S-5	7.23	1888	0.016	0.002	0.019	0.031	0.000000	0.000000	-1807.48	172.93
3	GUIDE	1197885328	7.23	3775	-0.038	-0.073	0.044	0.071	16.283090	-71.733943	-1671.14	922.78
4	GUIDE	1198189696	7.35	3775	-0.135	0.021	0.058	0.094	15.223750	-72.697522	523.67	-2004.50
5	GUIDE	1197884536	8.50	3773	-0.024	0.042	0.068	0.112	17.160729	-71.835289	-800.56	1514.42
6	GUIDE	1197884712	8.31	3774	0.096	0.041	0.059	0.095	16.087398	-72.252690	-266.01	-326.06
7	GUIDE	1197749664	9.58	3763	0.102	-0.026	0.094	0.157	15.809015	-72.366369	-103.25	-810.11

2.4 Star Slots

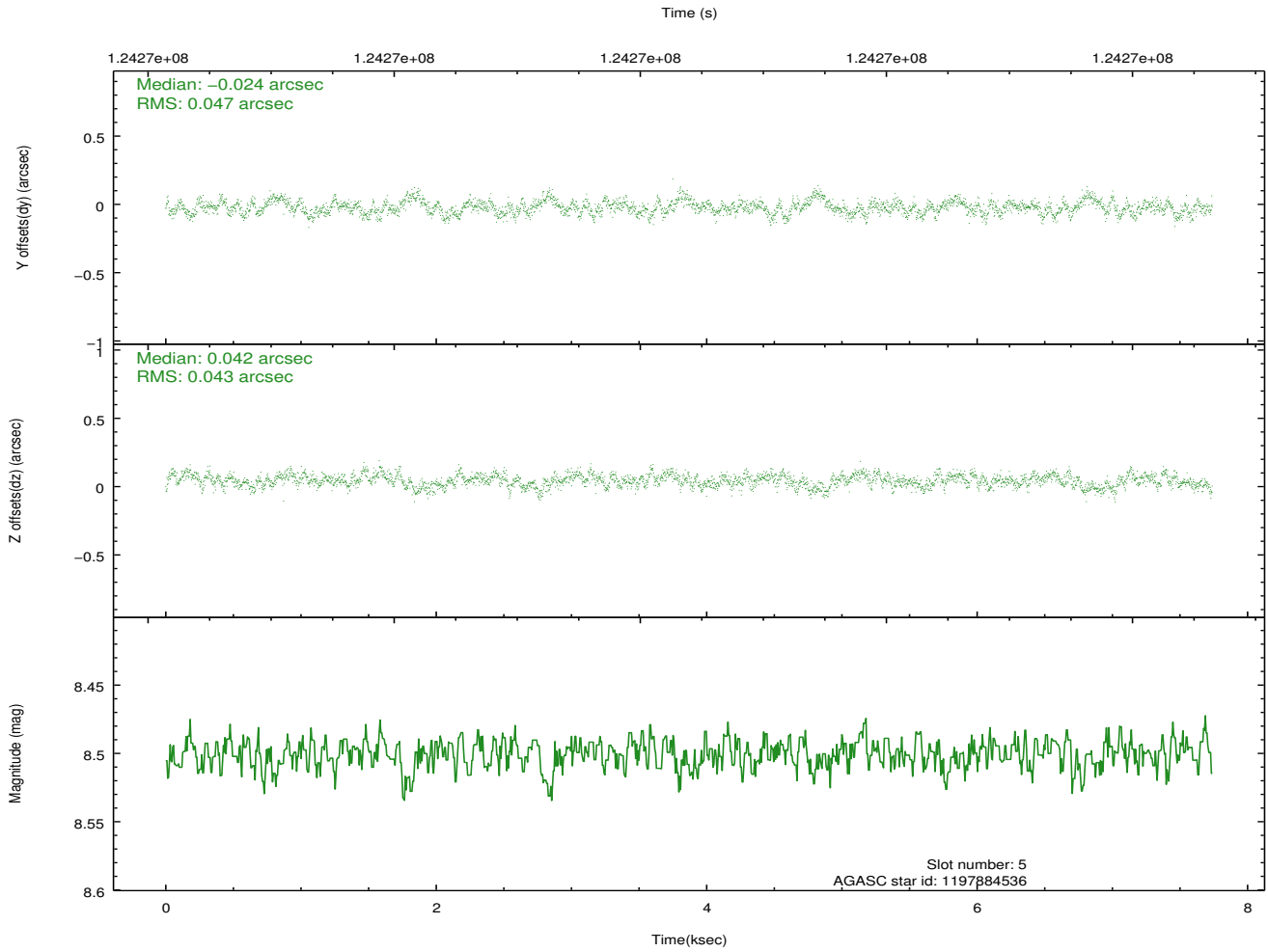
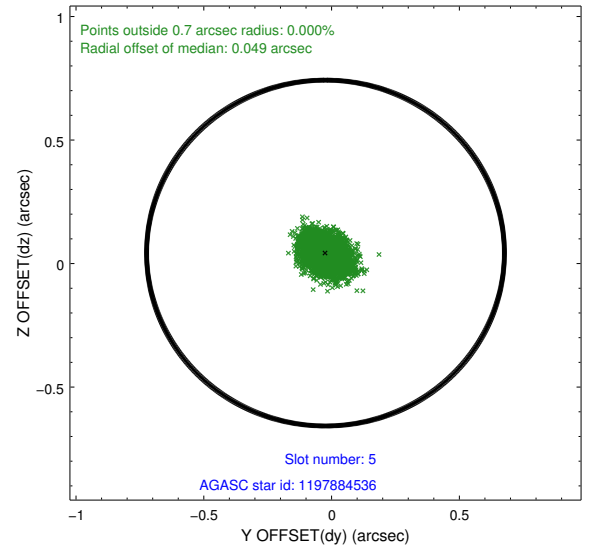
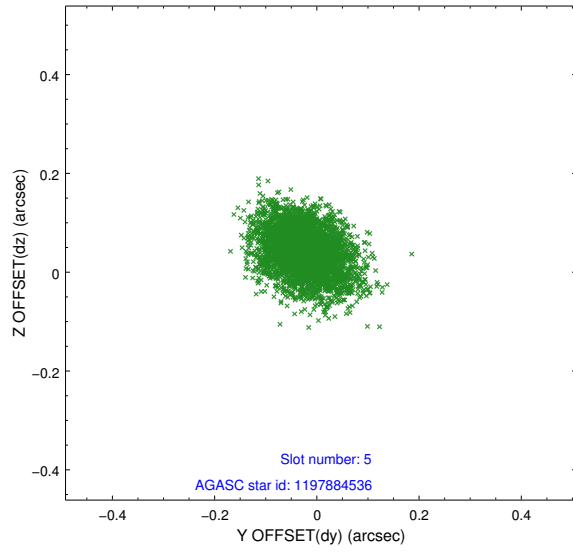
2.4.1 Slot 3



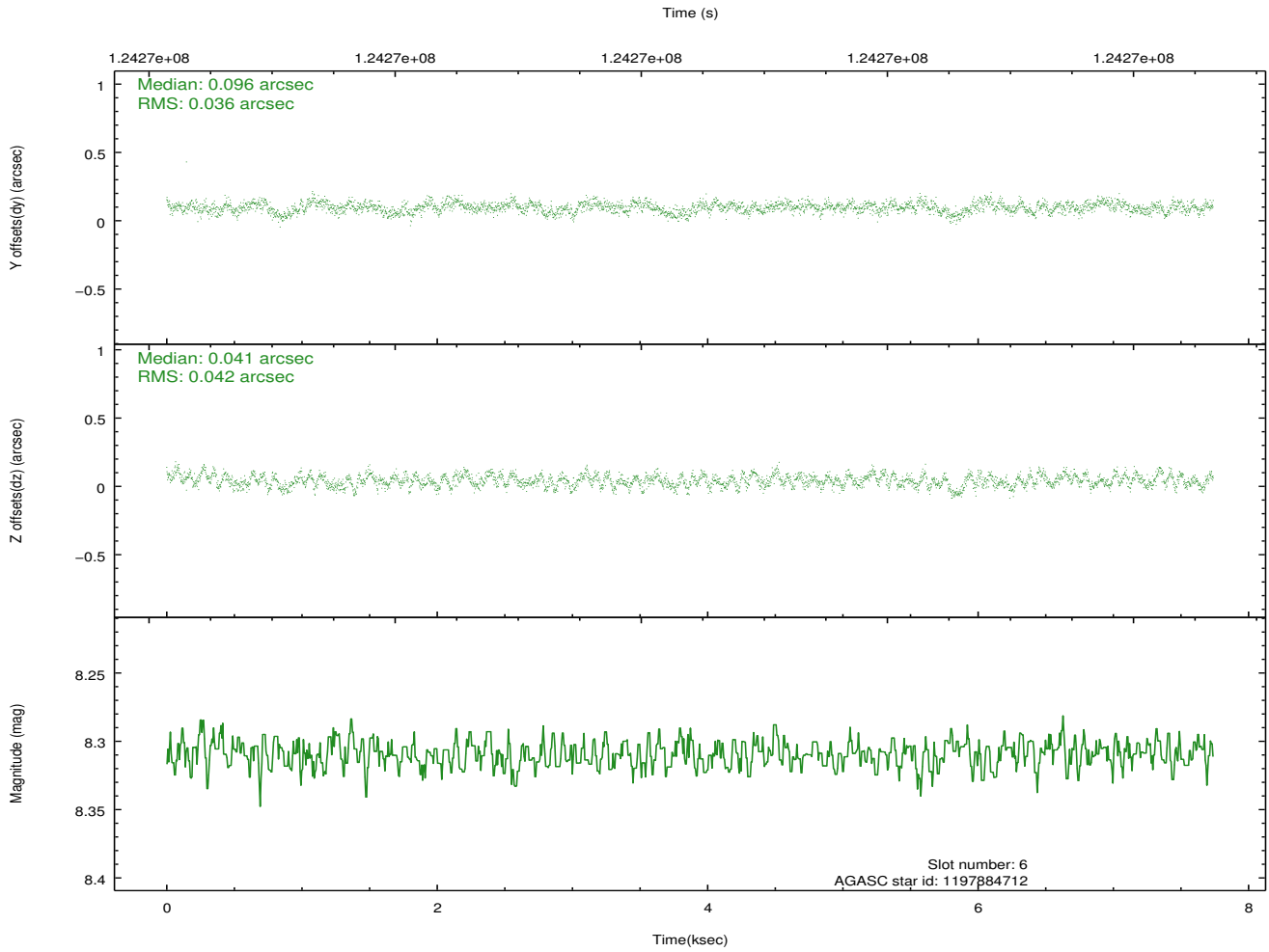
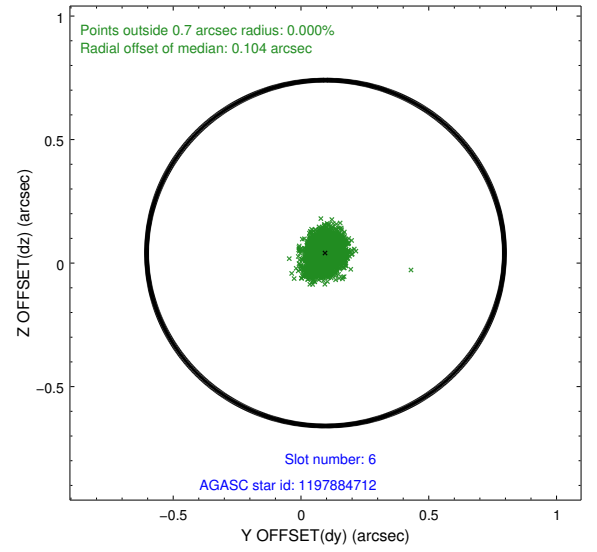
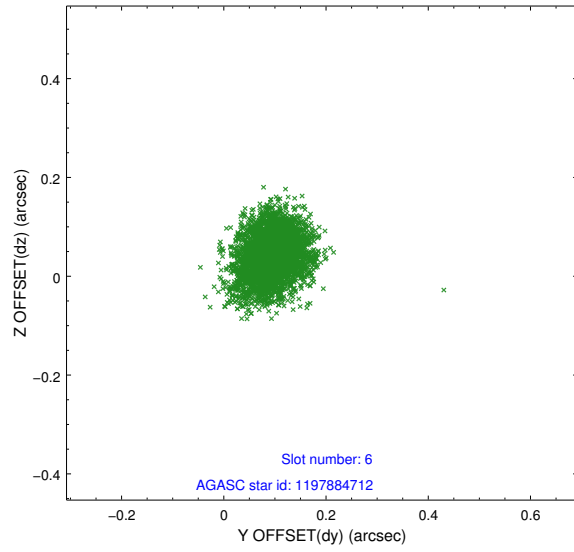
2.4.2 Slot 4



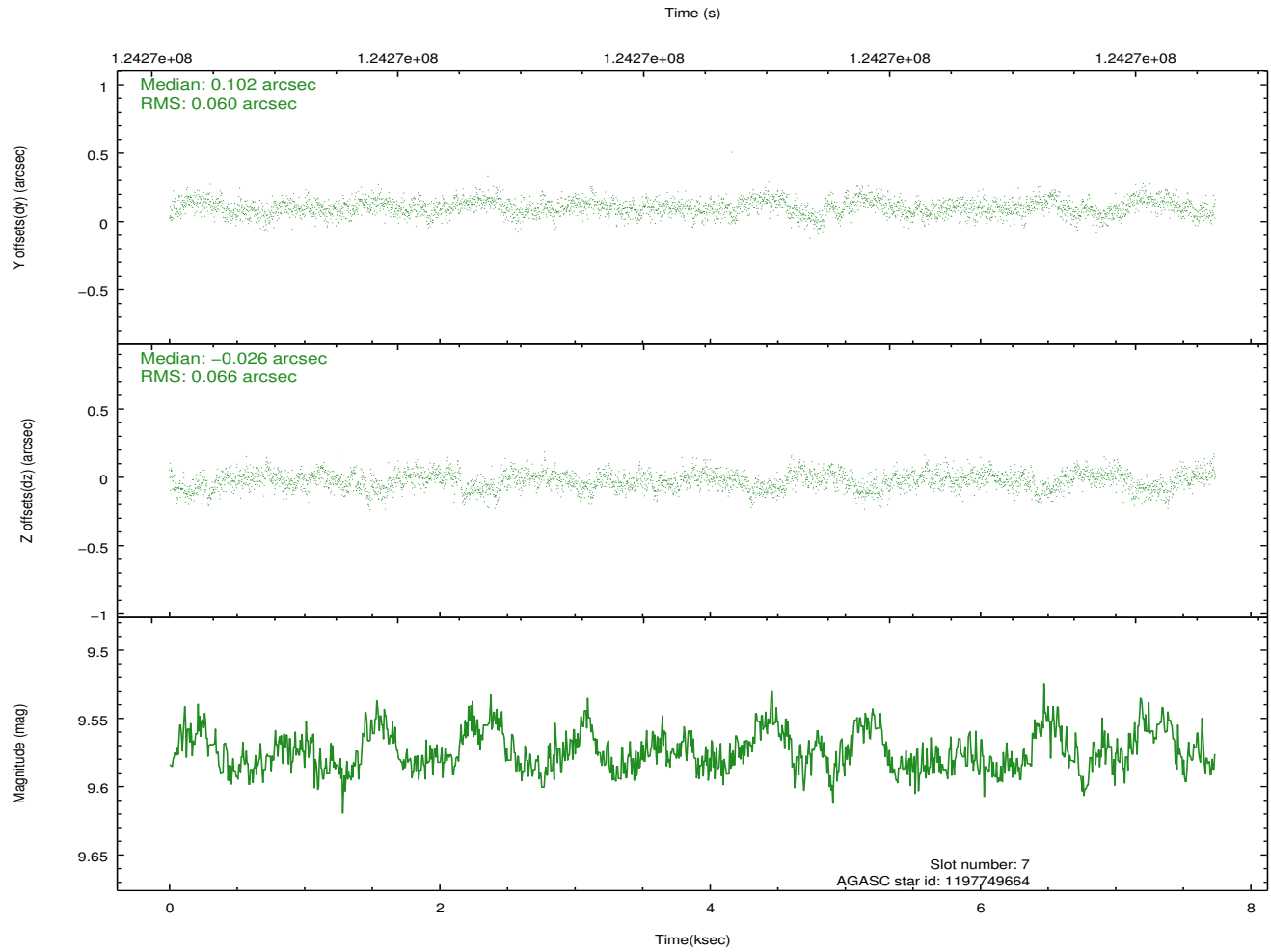
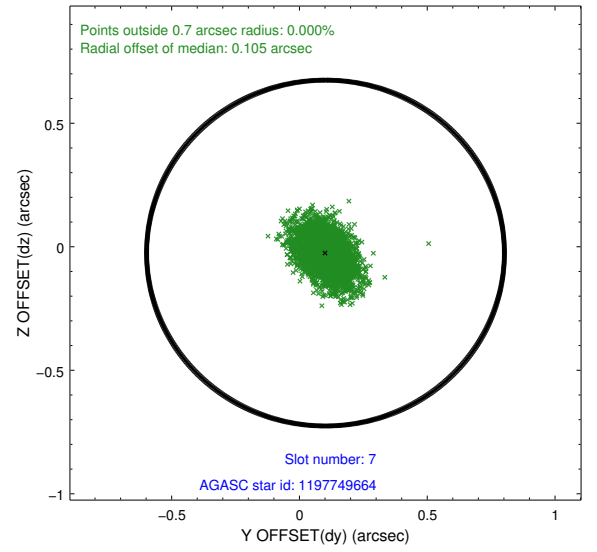
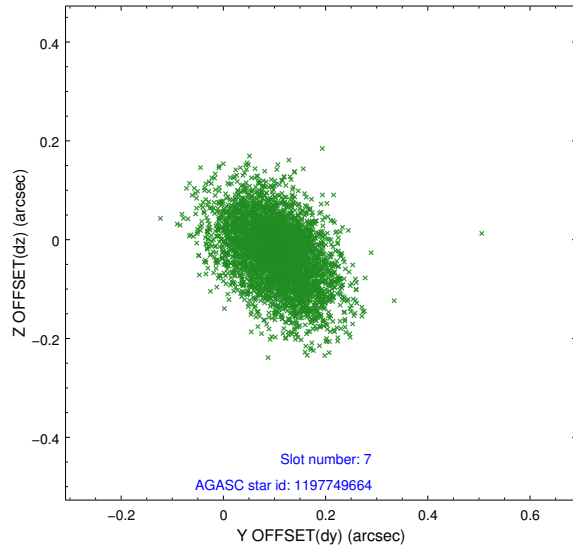
2.4.3 Slot 5



2.4.4 Slot 6

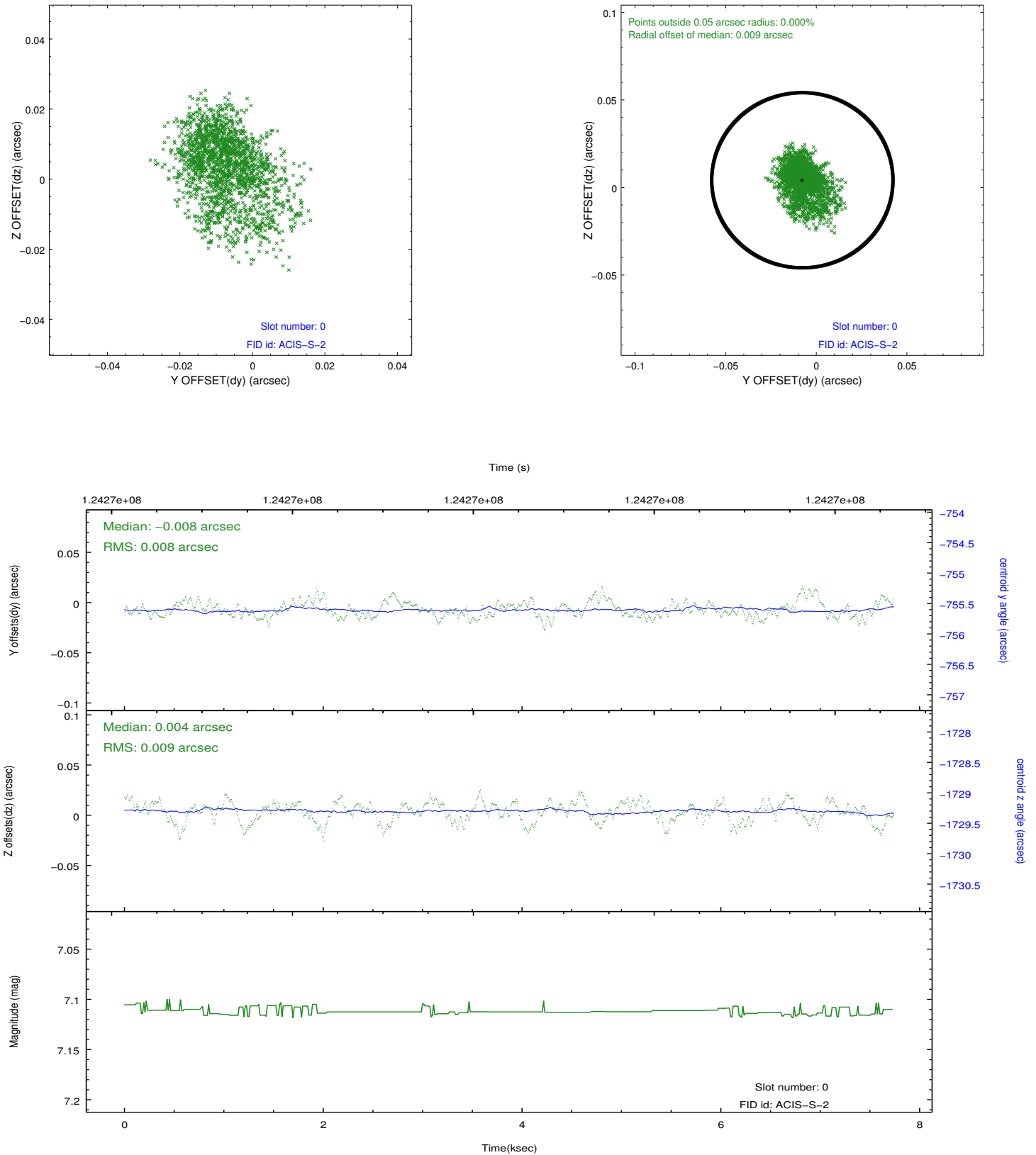


2.4.5 Slot 7

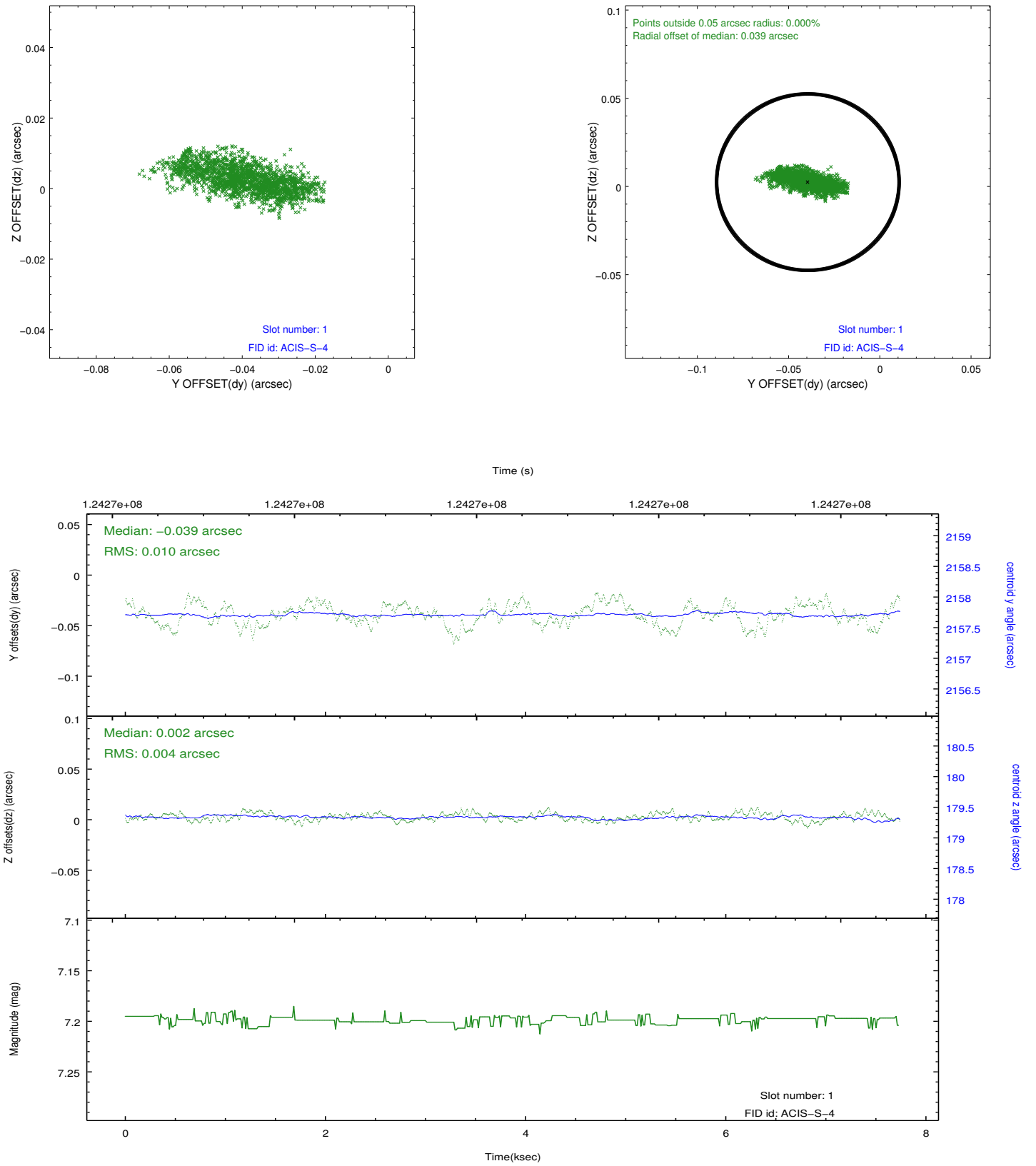


2.5 FID Slots

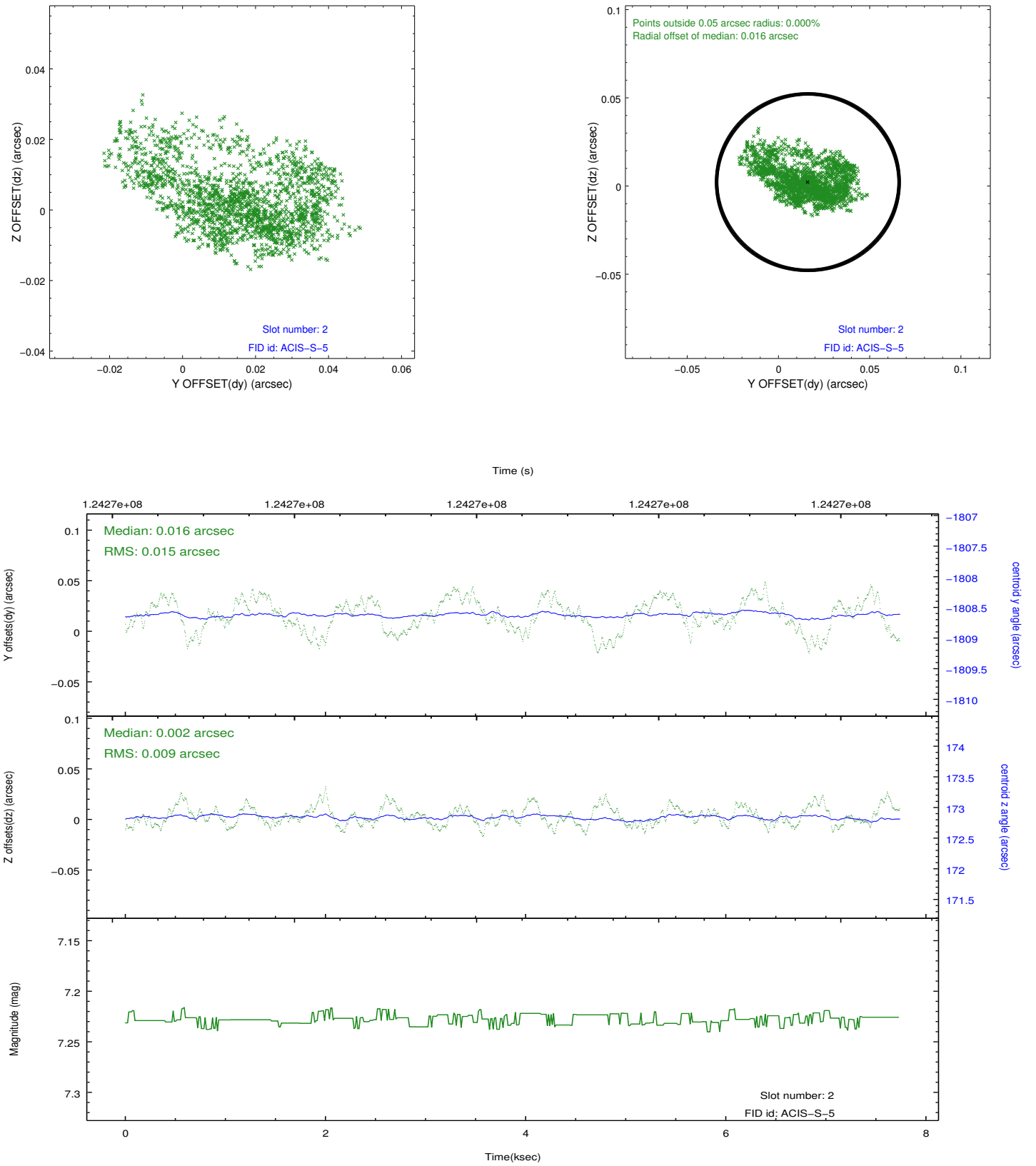
2.5.1 Slot 0



2.5.2 Slot 1



2.5.3 Slot 2



A Summary

A.1 Status

V&V Scientist	Jen Lauer
V&V Date (YYYY-MM-DD)	2012.09.30
V&V Edition	1
V&V Disposition and Status	OK
V&V Charge Time	7.305

A.2 Comments

Window constraint met.