

# V&V Reference Report

## L2 ASCDS Version : 7.6.10

Observation 2846 - L2 Version 001  
Chandra X-Ray Center

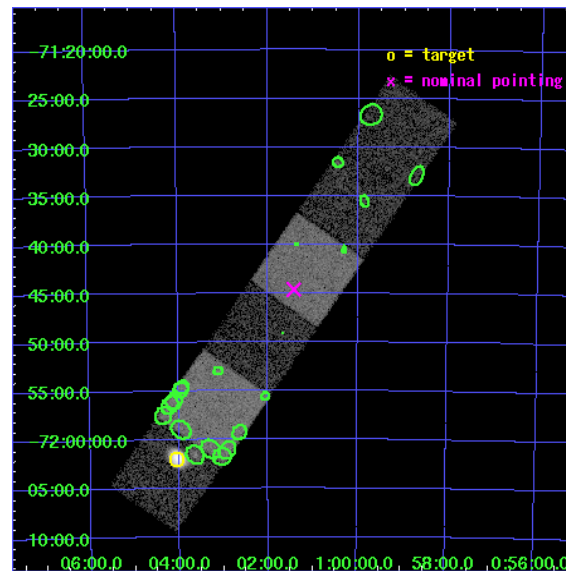
L2 Processing Date : Jan 21 2007

## Contents

<b>1</b>	<b>Front</b>	<b>2</b>
<b>2</b>	<b>OBI</b>	<b>3</b>
2.1	OBI . . . . .	3
2.1.1	Images . . . . .	3
2.1.2	Bias . . . . .	3
2.1.3	Parameters . . . . .	4
2.1.4	Events . . . . .	4
2.2	Compared Parameters . . . . .	5
2.3	Aspect . . . . .	6
2.4	Star Slots . . . . .	9
2.4.1	Slot 3 . . . . .	9
2.4.2	Slot 4 . . . . .	10
2.4.3	Slot 5 . . . . .	11
2.4.4	Slot 6 . . . . .	12
2.4.5	Slot 7 . . . . .	13
2.5	FID Slots . . . . .	14
2.5.1	Slot 0 . . . . .	14
2.5.2	Slot 1 . . . . .	15
2.5.3	Slot 2 . . . . .	16
<b>3</b>	<b>Point Sources</b>	<b>17</b>
<b>A</b>	<b>Summary</b>	<b>18</b>
A.1	Status . . . . .	18
A.2	Comments . . . . .	18

# 1 Front

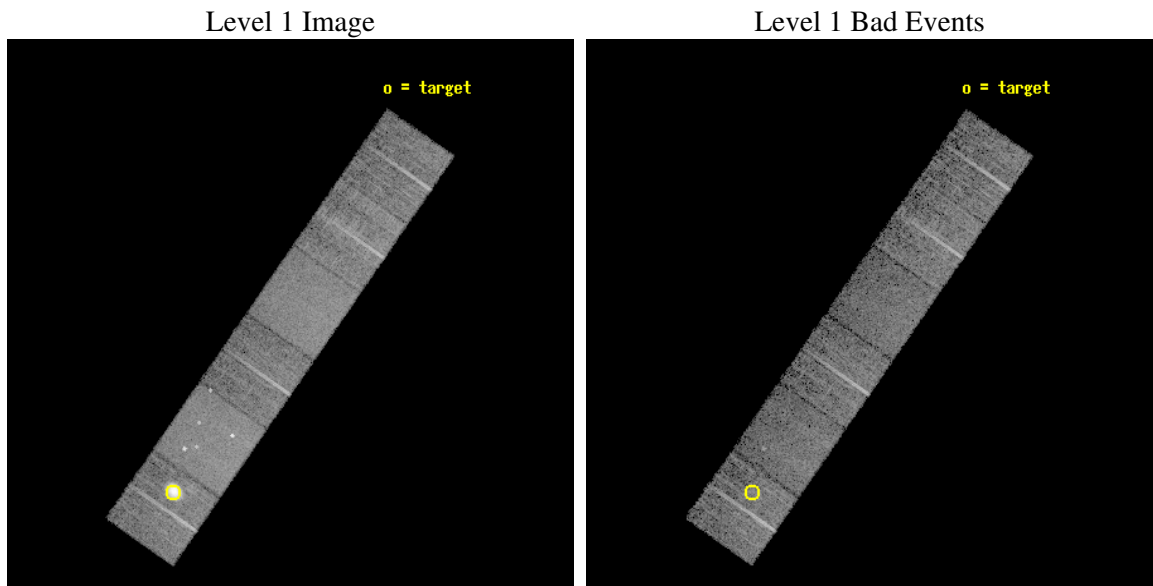
seq_num	590235
obs_id	2846
title	AO3A ACIS-S CALIBRATION OBSERVATIONS OF E0102-72
observer	Dr. CXC Calibration
object	E0102-72.3 [Chip S0, T=120, Offsets=21,0,0]
dtcycle	0
cycle	P
ra_targ	16.01
dec_targ	-72.032028
ra_nom	15.35424871069
dec_nom	-71.743526015254
roll_nom	304.81307290092
revision	2
ontime	7948.8000074029
livetime	7848.1475155164
ontime4	7948.8000074029
ontime5	7948.8000074029
ontime6	7948.8000074029
ontime7	7948.8000074029
ontime8	7948.8000074029
ontime9	7948.8000074029
l2events	97357



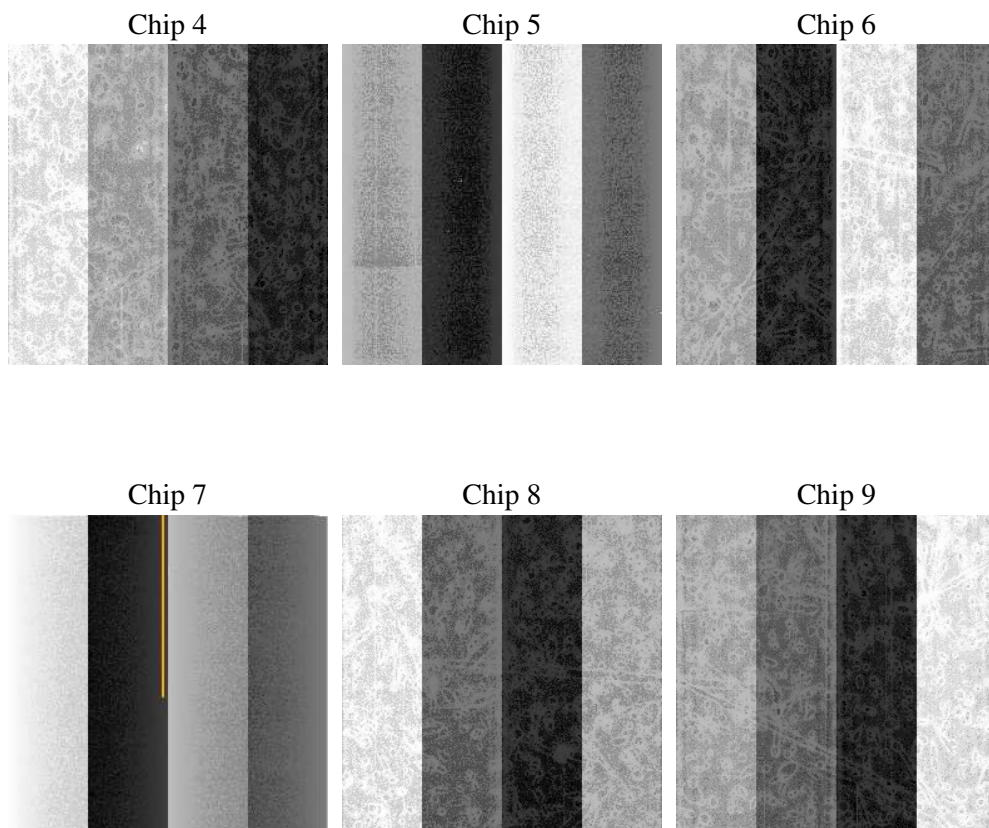
## 2 OBI

### 2.1 OBI

#### 2.1.1 Images



#### 2.1.2 Bias



### 2.1.3 Parameters

obi_num	1
ascdsver	7.6.10
caldbver	3.3.0
date	2007-01-20T08:33:10
revision	2

sched_exp_time	7800.000000
ontime	7948.8000074029
ontime4	7948.8000074029
ontime5	7948.8000074029
ontime6	7948.8000074029
ontime7	7948.8000074029
ontime8	7948.8000074029
ontime9	7948.8000074029
l1events	379757

### 2.1.4 Events

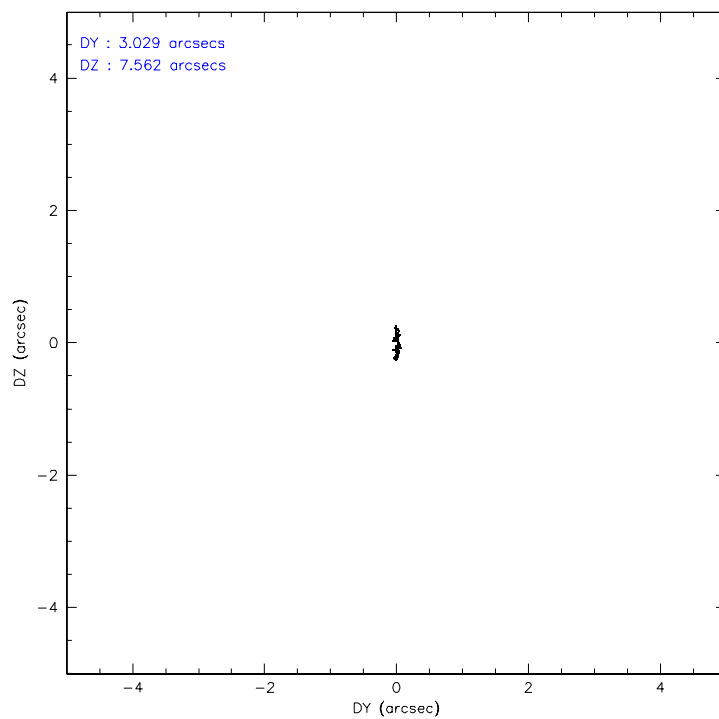
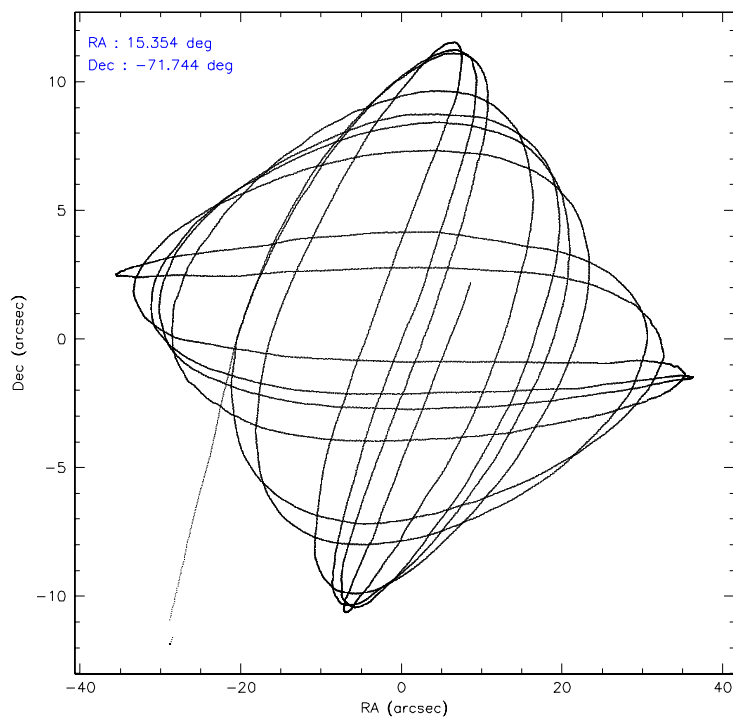
	ccd 4	ccd 5	ccd 6	ccd 7	ccd 8	ccd 9
level 1 events	75465	74597	51213	65687	62926	49869
rejected events	48829	40002	45283	38486	50025	43800
rejected %	64%	53%	88%	58%	79%	87%

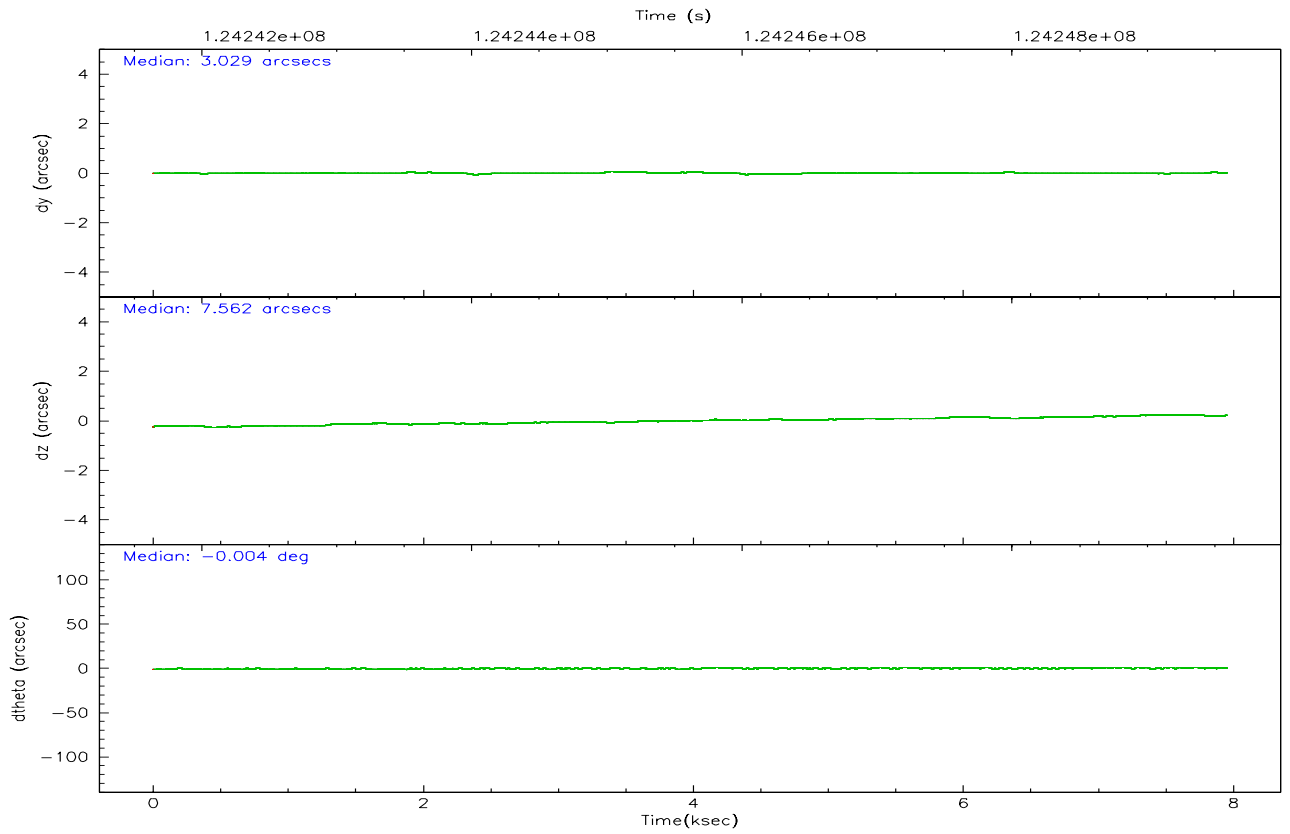
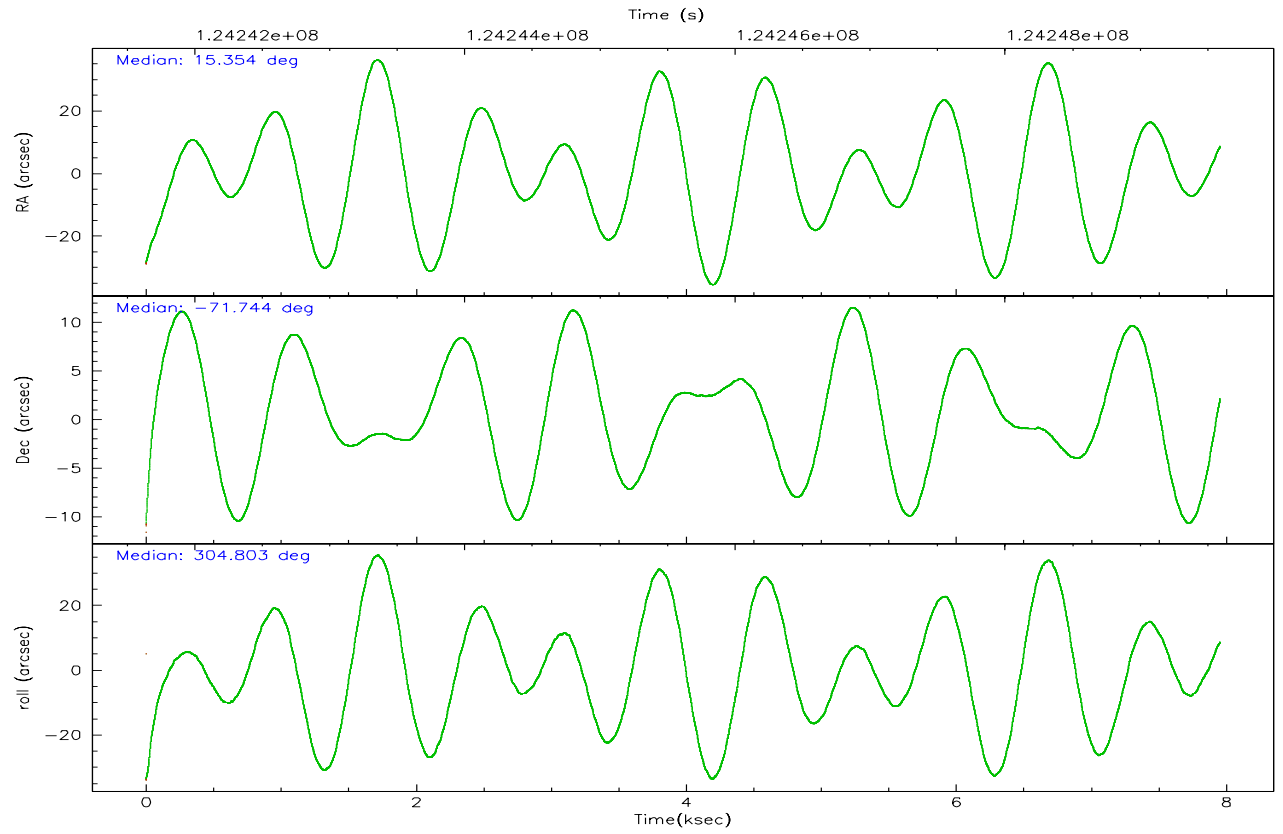
	ccd 4	ccd 5	ccd 6	ccd 7	ccd 8	ccd 9
grade 0 events	21205	5599	2505	2750	4283	2475
	28%	7%	4%	4%	6%	4%
grade 1 events	105	249	29	63	40	20
	0%	0%	0%	0%	0%	0%
grade 2 events	2923	9540	1219	5480	2714	1297
	3%	12%	2%	8%	4%	2%
grade 3 events	883	1393	609	2496	1507	613
	1%	1%	1%	3%	2%	1%
grade 4 events	877	1291	563	2420	1415	557
	1%	1%	1%	3%	2%	1%
grade 5 events	1884	5336	2174	6217	2776	2182
	2%	7%	4%	9%	4%	4%
grade 6 events	1165	17268	1108	14426	3207	1228
	1%	23%	2%	21%	5%	2%
grade 7 events	46423	33921	43006	31835	46984	41497
	61%	45%	83%	48%	74%	83%

## 2.2 Compared Parameters

Parameter	Planned	Actual	Parameter	Planned	Actual
Instrument	ACIS	ACIS	Obspar format version number	6	6
Detector	ACIS-456789	ACIS-456789	Obspar file type	PREDICTED	ACTUAL
Grating	NONE	NONE	Obspar update status	NONE	UPDATED
Data mode	FAINT	FAINT	Number of optional ACIS chips dropped	0	0
Observation mode	POINTING	POINTING	On-chip summing requested	N	N
Pointing RA	15.275158	15.35424871069005	Subarray requested	NONE	NONE
Pointing Dec	-71.732198	-71.74352601525392	Alternating exposures requested	N	N
Pointing Roll	304.581368	304.8130729009191	Primary exposure time	0.000000	3.2
Window start time	123552064.184000	123552064.184000			
Window stop time	126144064.184000	126144064.184000			
SIM focus pos (mm)	-0.684267	-0.6828225247311905			
SIM defocus (mm)	0	0.001444936568705701			
SIM translation stage pos (mm)	-190.132523	-190.1425803651734			
SIM translation stage offset (mm)	0	0.01005778216563158			
Observation start time	124241794.184000	124240677.75709			
Observation start date	2001-12-08T23:35:30	2001-12-08T23:17:57			
Observation end time	124249594.184000	124249727.99495			
Observation end date	2001-12-09T01:45:30	2001-12-09T01:48:47			
Read mode	TIMED	TIMED			

## 2.3 Aspect





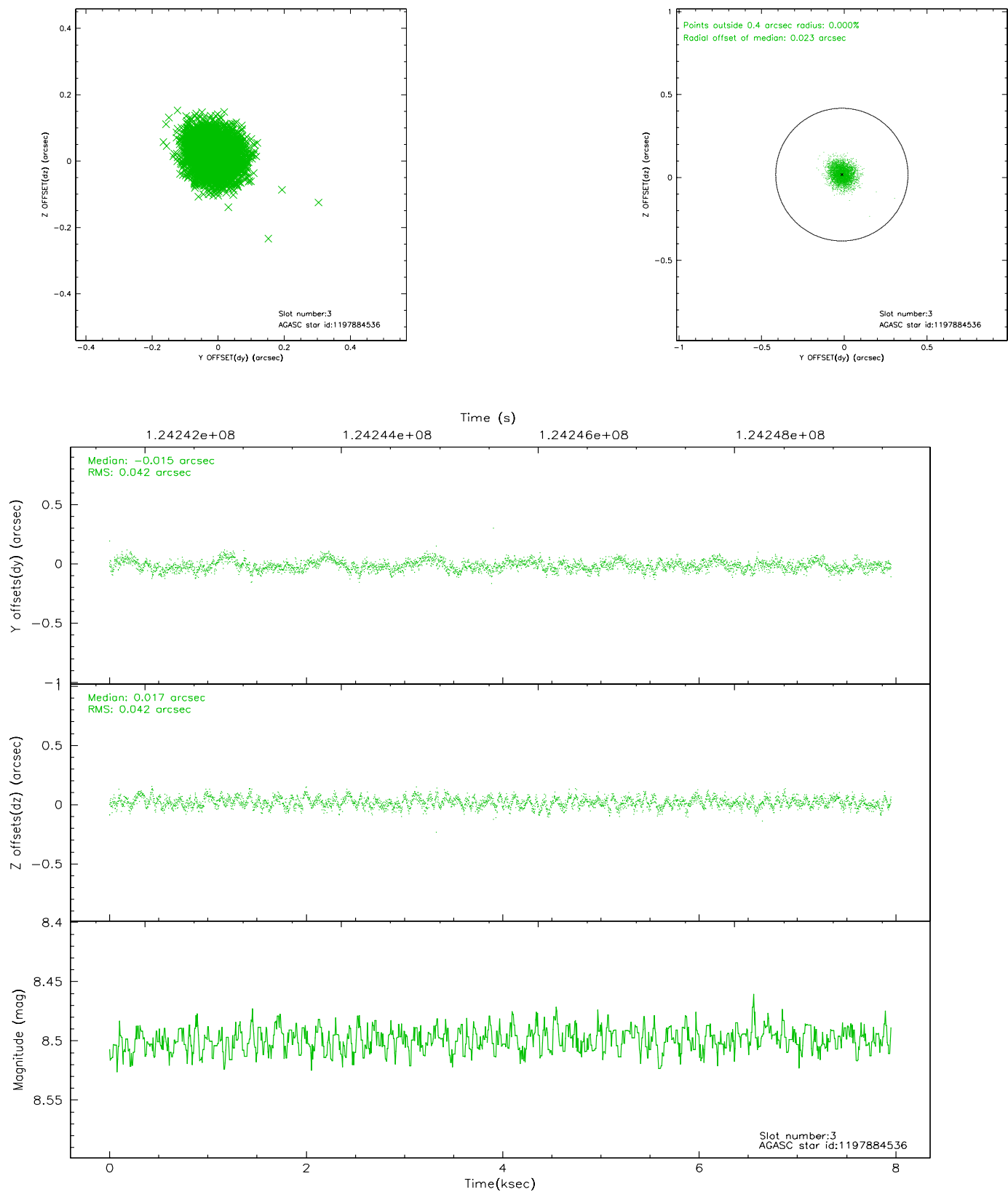
### Slot Statistics

slot	status	id	mag	n_pts	med_dy	med_dz	dr1	dr2	ra	dec	mean_y	mean_z
0	FID	ACIS-S-2	7.11	1941	0.006	0.023	0.007	0.013	0.000000	0.000000	-755.67	-1728.66
1	FID	ACIS-S-4	7.20	1941	-0.076	-0.009	0.005	0.010	0.000000	0.000000	2157.21	179.05
2	FID	ACIS-S-5	7.24	1941	0.039	-0.006	0.006	0.011	0.000000	0.000000	-1807.57	173.54
3	GUIDE	1197884536	8.50	3881	-0.015	0.017	0.063	0.100	17.160729	-71.835289	1533.91	1513.57
4	GUIDE	1197884712	8.32	3881	-0.010	0.104	0.073	0.123	16.087398	-72.252690	2054.44	-331.60
5	GUIDE	1197878768	9.62	3880	0.084	-0.053	0.121	0.205	16.656786	-71.304581	-346.94	2176.50
6	GUIDE	1197749416	10.27	3875	0.017	-0.100	0.142	0.228	13.610513	-71.871242	-624.24	-1832.51
7	GUIDE	1197750160	10.25	3878	-0.070	0.023	0.150	0.242	12.997994	-71.773722	-1291.50	-2222.82

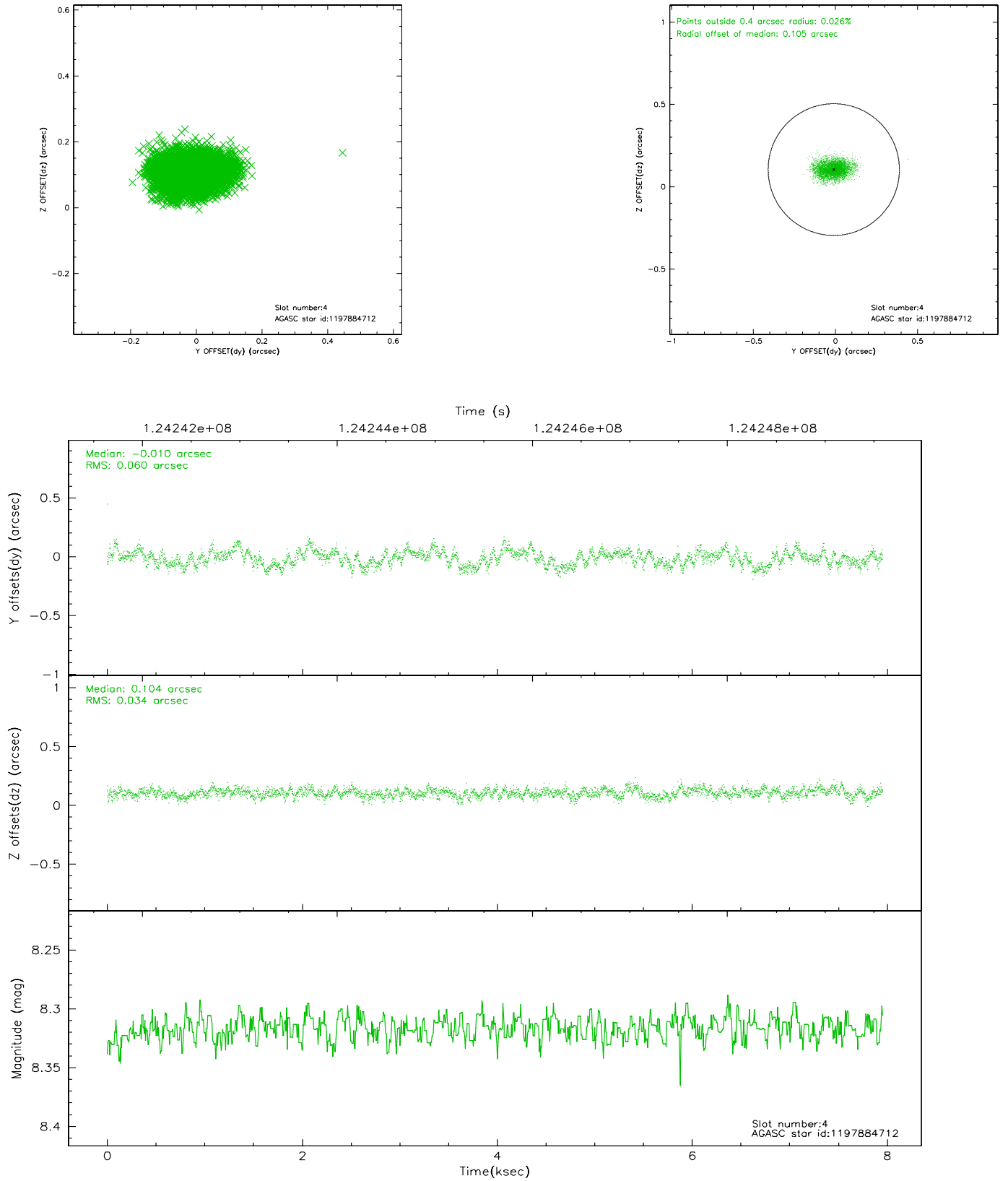


## 2.4 Star Slots

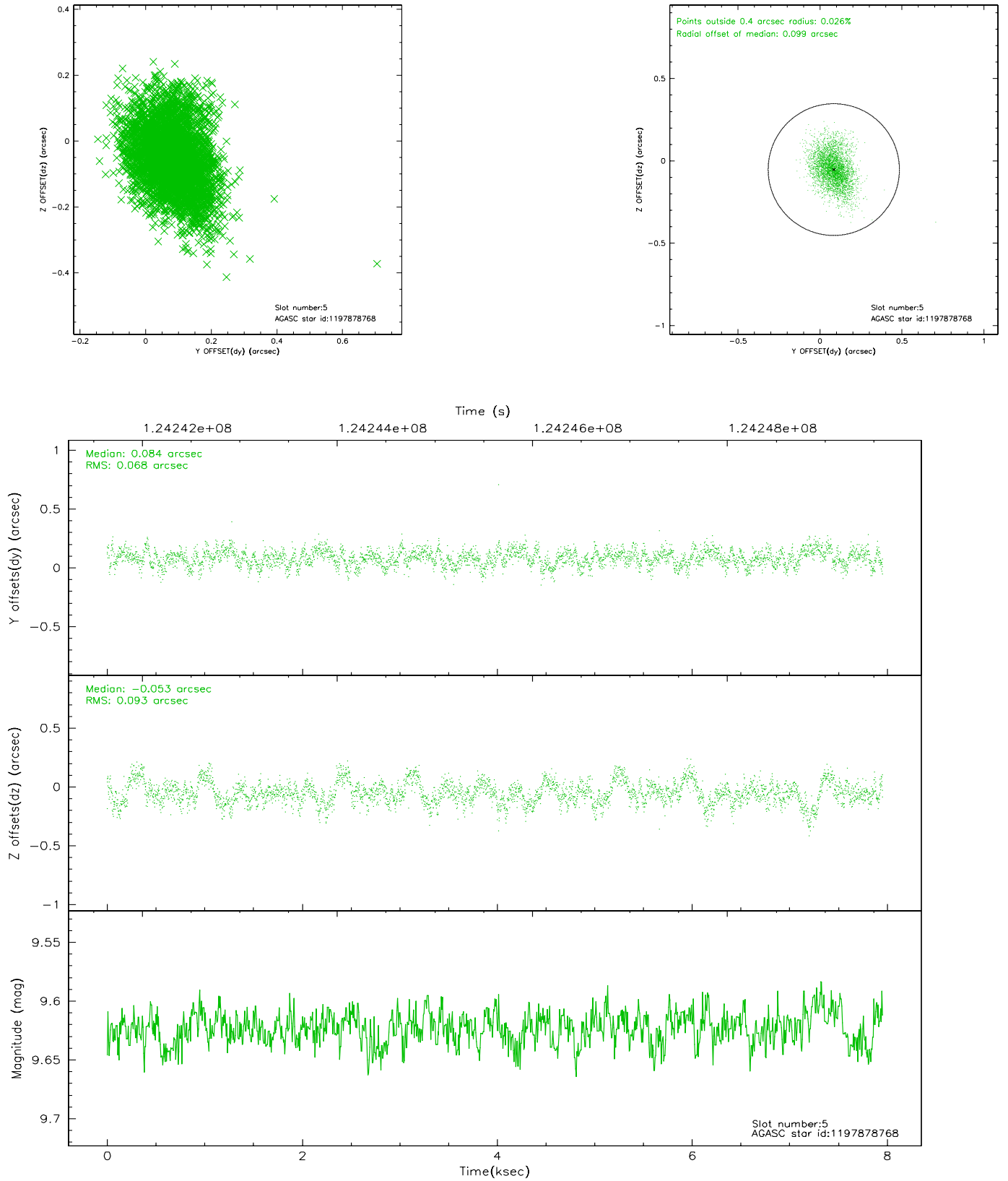
### 2.4.1 Slot 3



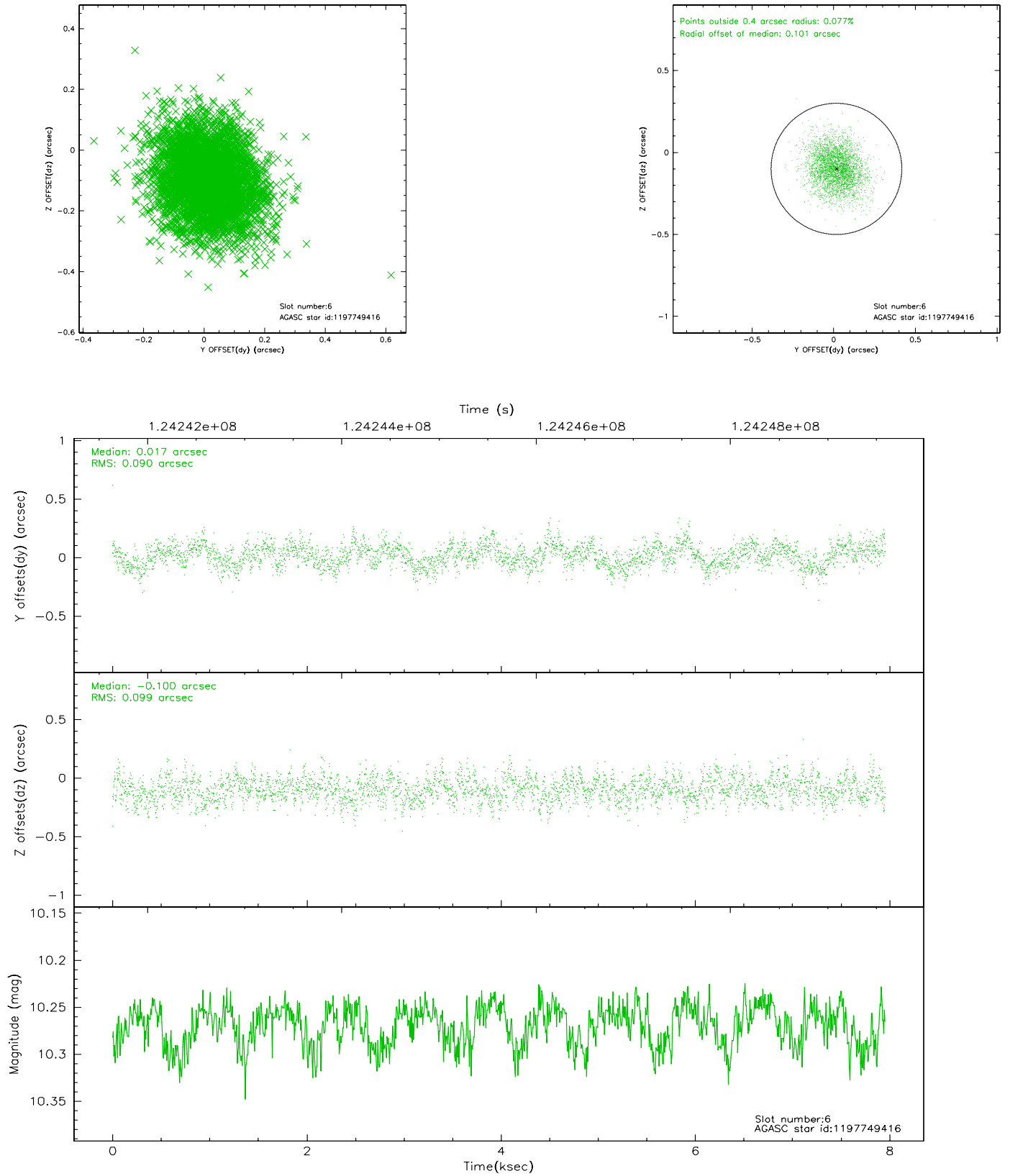
## 2.4.2 Slot 4



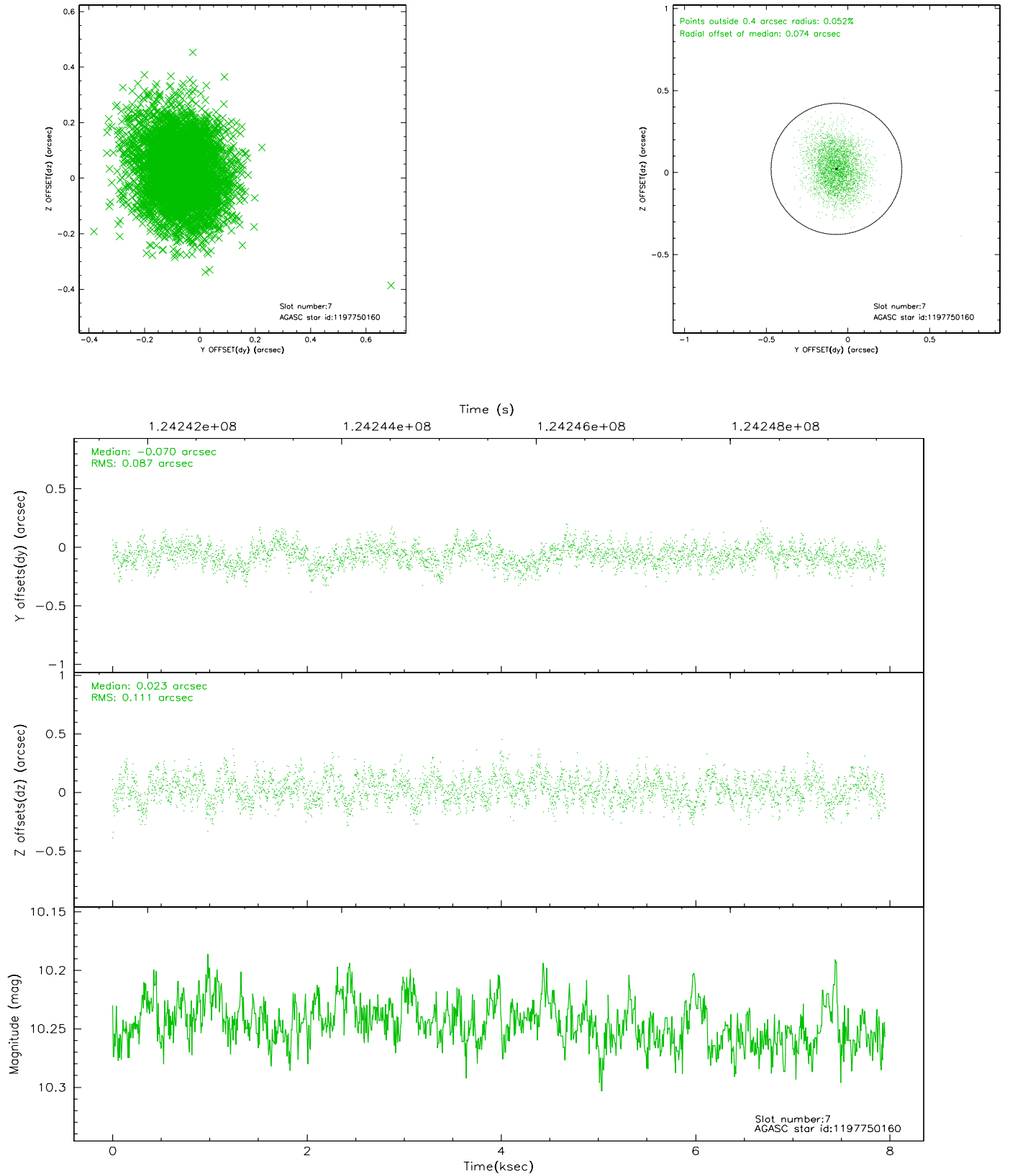
### 2.4.3 Slot 5



## 2.4.4 Slot 6

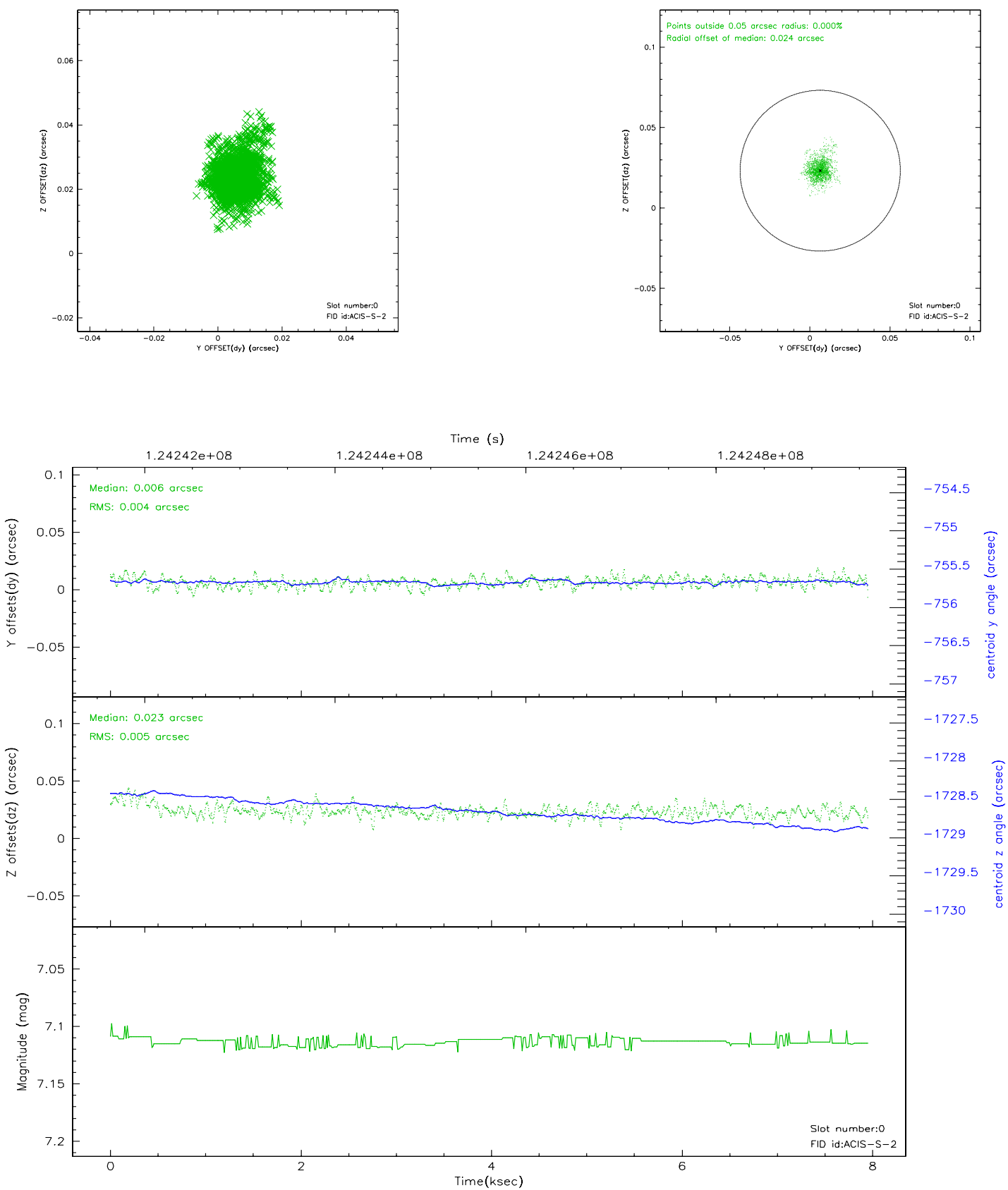


## 2.4.5 Slot 7

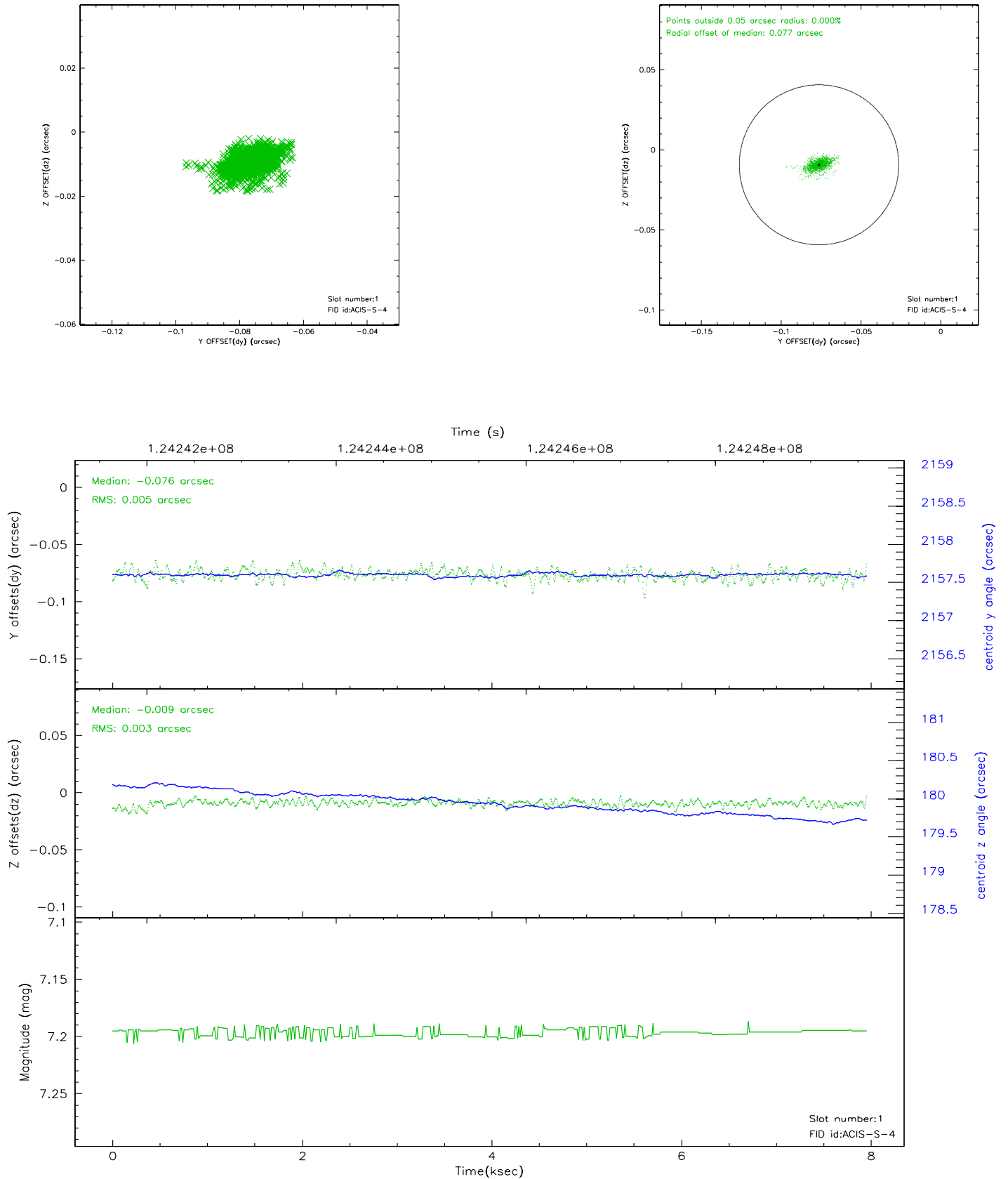


## 2.5 FID Slots

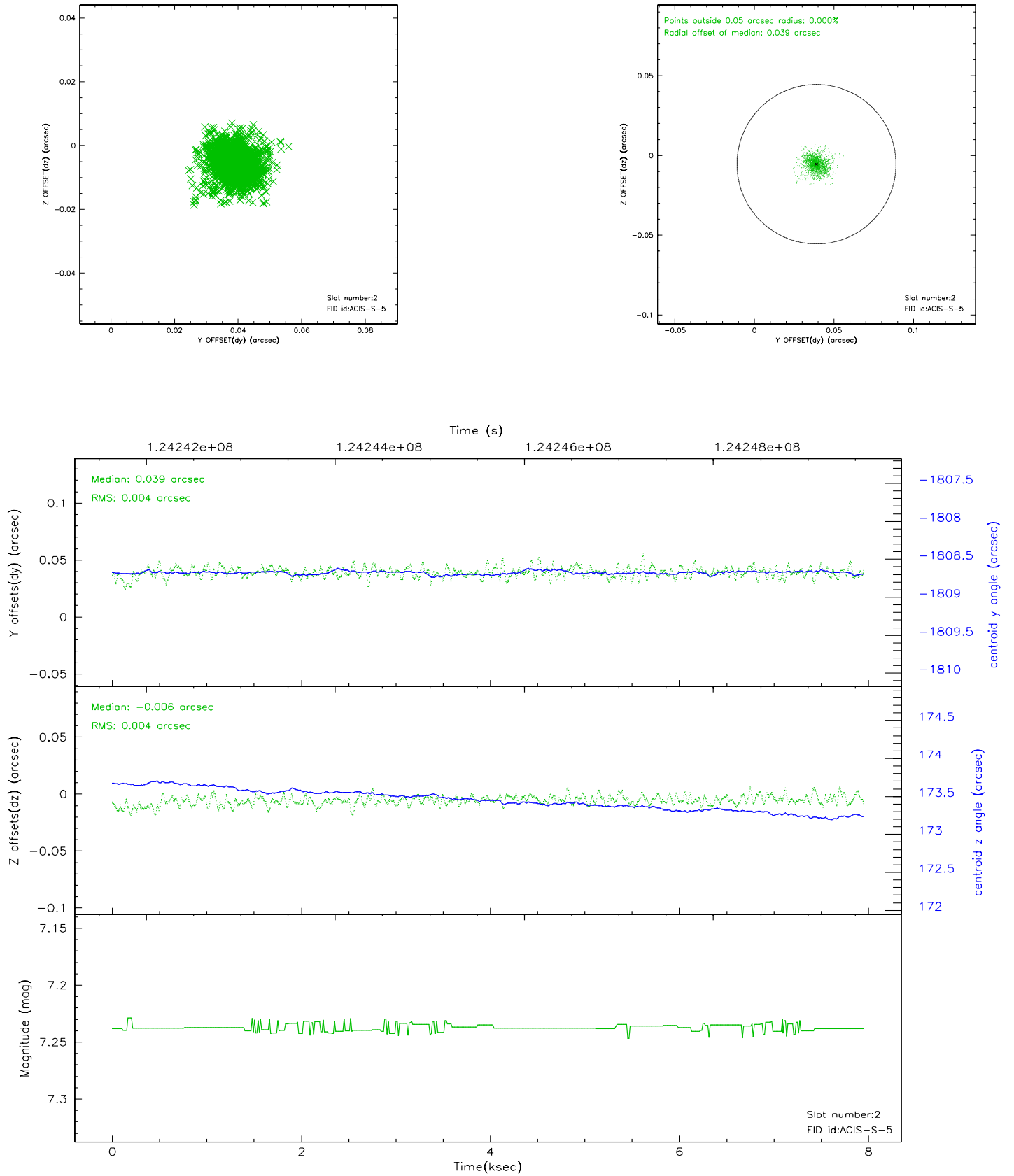
### 2.5.1 Slot 0



## 2.5.2 Slot 1

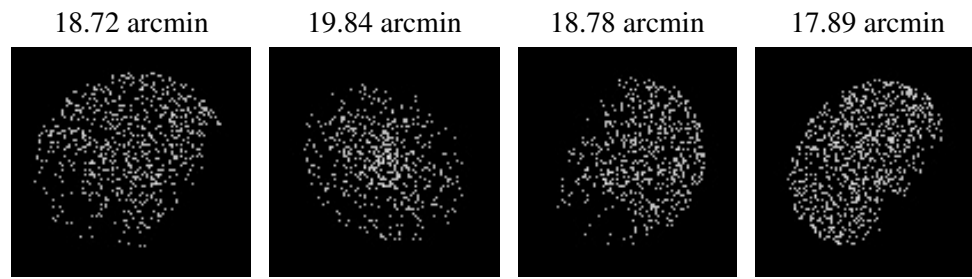


### 2.5.3 Slot 2





### 3 Point Sources



## A Summary

### A.1 Status

V&V Scientist	Beth Sundheim
V&V Date (YYYY-MM-DD)	2007.01.21
V&V Edition	1
V&V Disposition and Status	OK
V&V Charge Time	7.948

### A.2 Comments