

V&V Reference Report

L2 ASCDS Version : 7.6.10

Observation 2840 - L2 Version 001
Chandra X-Ray Center

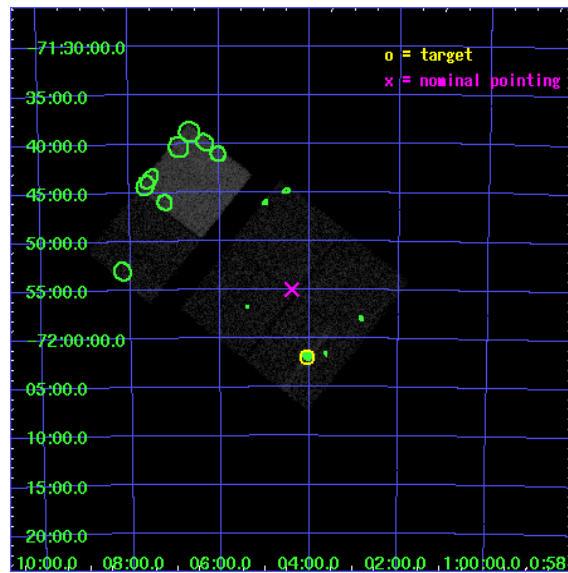
L2 Processing Date : Jan 21 2007

Contents

1	Front	2
2	OBI	3
2.1	OBI	3
2.1.1	Images	3
2.1.2	Bias	3
2.1.3	Parameters	4
2.1.4	Events	4
2.2	Compared Parameters	5
2.3	Aspect	6
2.4	Star Slots	9
2.4.1	Slot 3	9
2.4.2	Slot 4	10
2.4.3	Slot 5	11
2.4.4	Slot 6	12
2.4.5	Slot 7	13
2.5	FID Slots	14
2.5.1	Slot 0	14
2.5.2	Slot 1	15
2.5.3	Slot 2	16
3	Point Sources	17
A	Summary	18
A.1	Status	18
A.2	Comments	18

1 Front

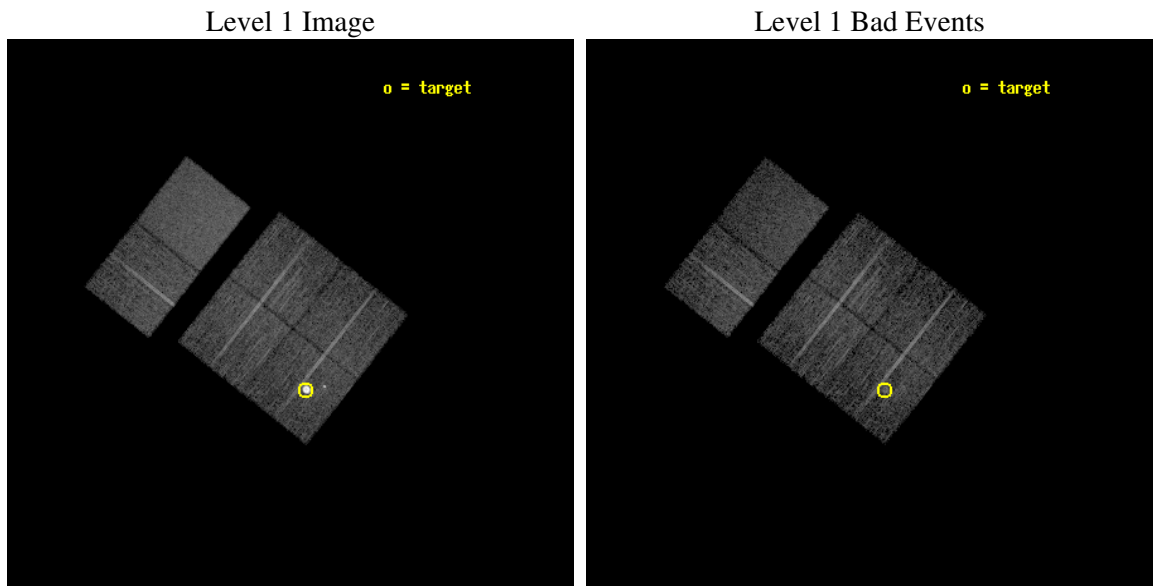
seq_num	590229
obs_id	2840
title	AO3A ACIS-I CALIBRATION OBSERVATIONS OF E0102-72
observer	Dr. CXC Calibration
object	E0102-72.3 [Chip I0, T=120, Offsets=4,-5,0]
dtcycle	0
cycle	P
ra_targ	16.01
dec_targ	-72.032028
ra_nom	16.098480990453
dec_nom	-71.916480906288
roll_nom	308.36936974326
revision	3
ontime	7558.4000070393
livetime	7462.6909950281
ontime0	7558.4000070393
ontime1	7558.4000070393
ontime2	7558.4000070393
ontime3	7558.4000070393
ontime6	7558.4000070393
ontime7	7558.4000070393
l2events	75368



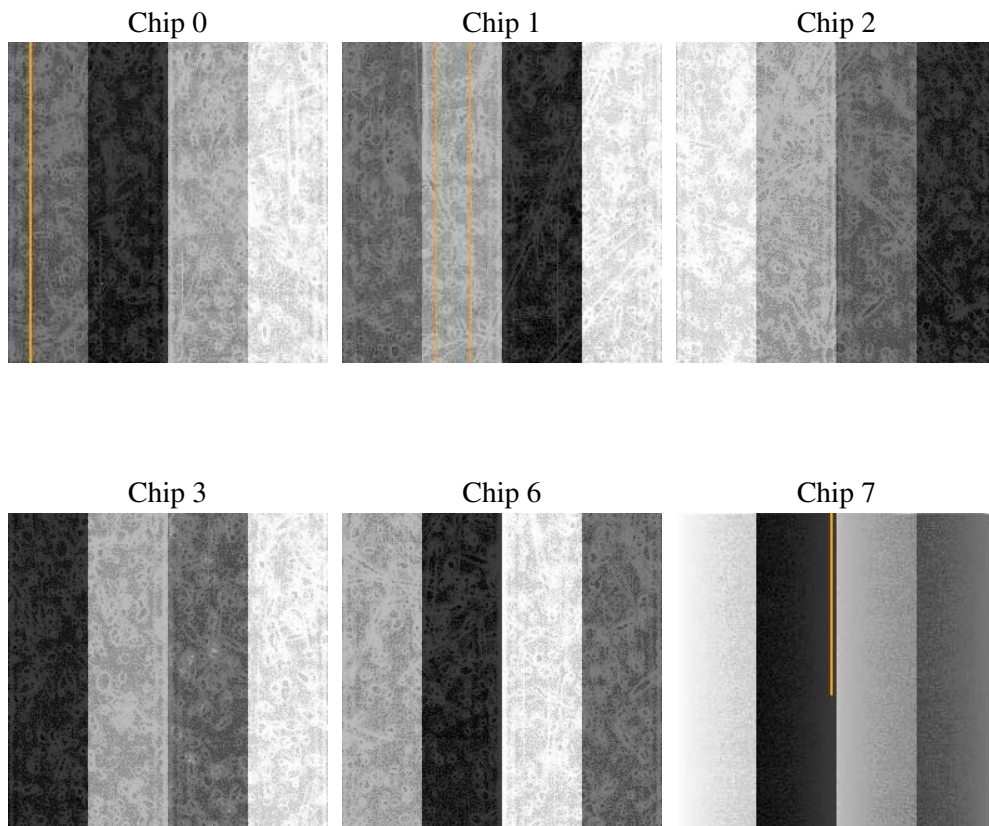
2 OBI

2.1 OBI

2.1.1 Images



2.1.2 Bias



2.1.3 Parameters

obi_num	1
ascdsver	7.6.10
caldsver	3.3.0
date	2007-01-20T13:22:28
revision	3

sched_exp_time	7800.000000
ontime	7558.4000070393
ontime0	7558.4000070393
ontime1	7558.4000070393
ontime2	7558.4000070393
ontime3	7558.4000070393
ontime6	7558.4000070393
ontime7	7558.4000070393
l1events	324387

2.1.4 Events

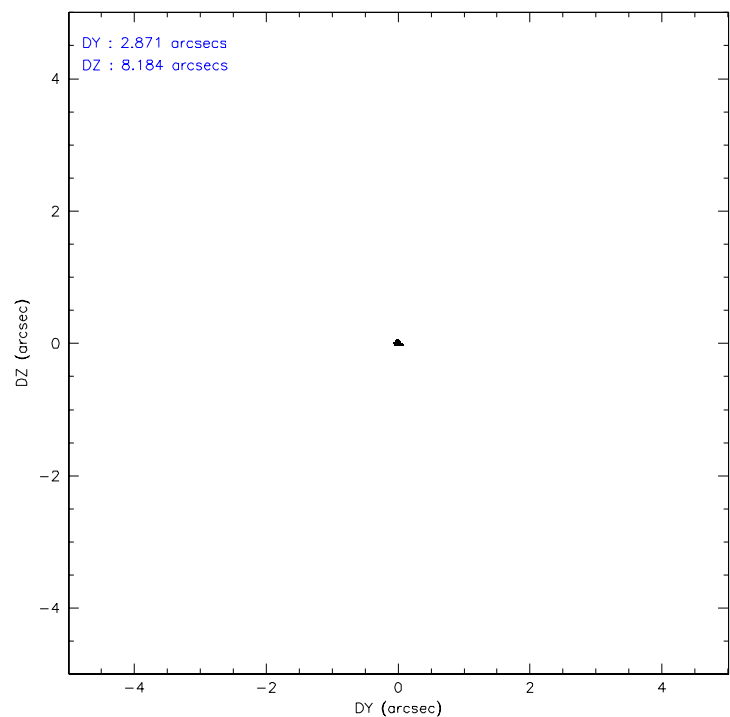
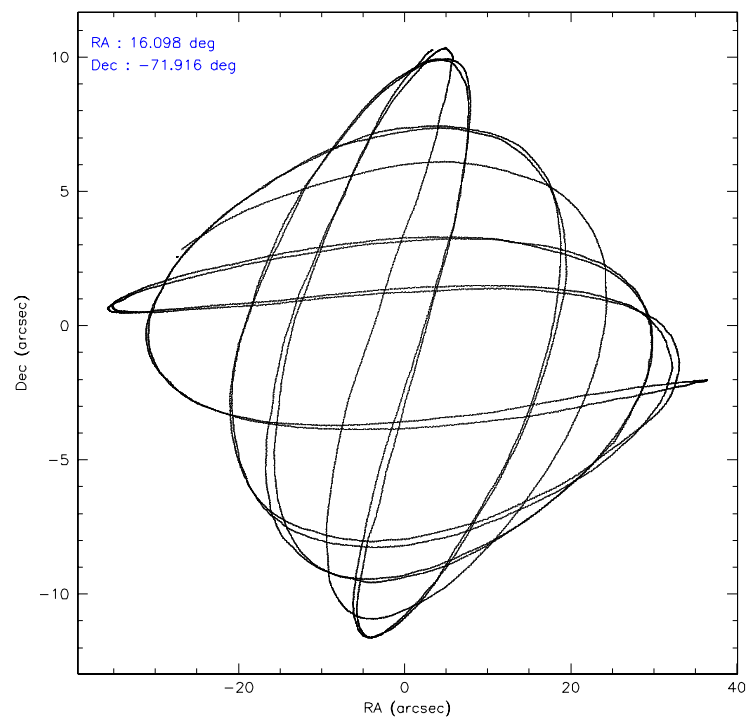
	ccd 0	ccd 1	ccd 2	ccd 3	ccd 6	ccd 7
level 1 events	68919	44223	49911	47749	50851	62734
rejected events	38120	38031	44200	42193	45104	36548
rejected %	55%	85%	88%	88%	88%	58%

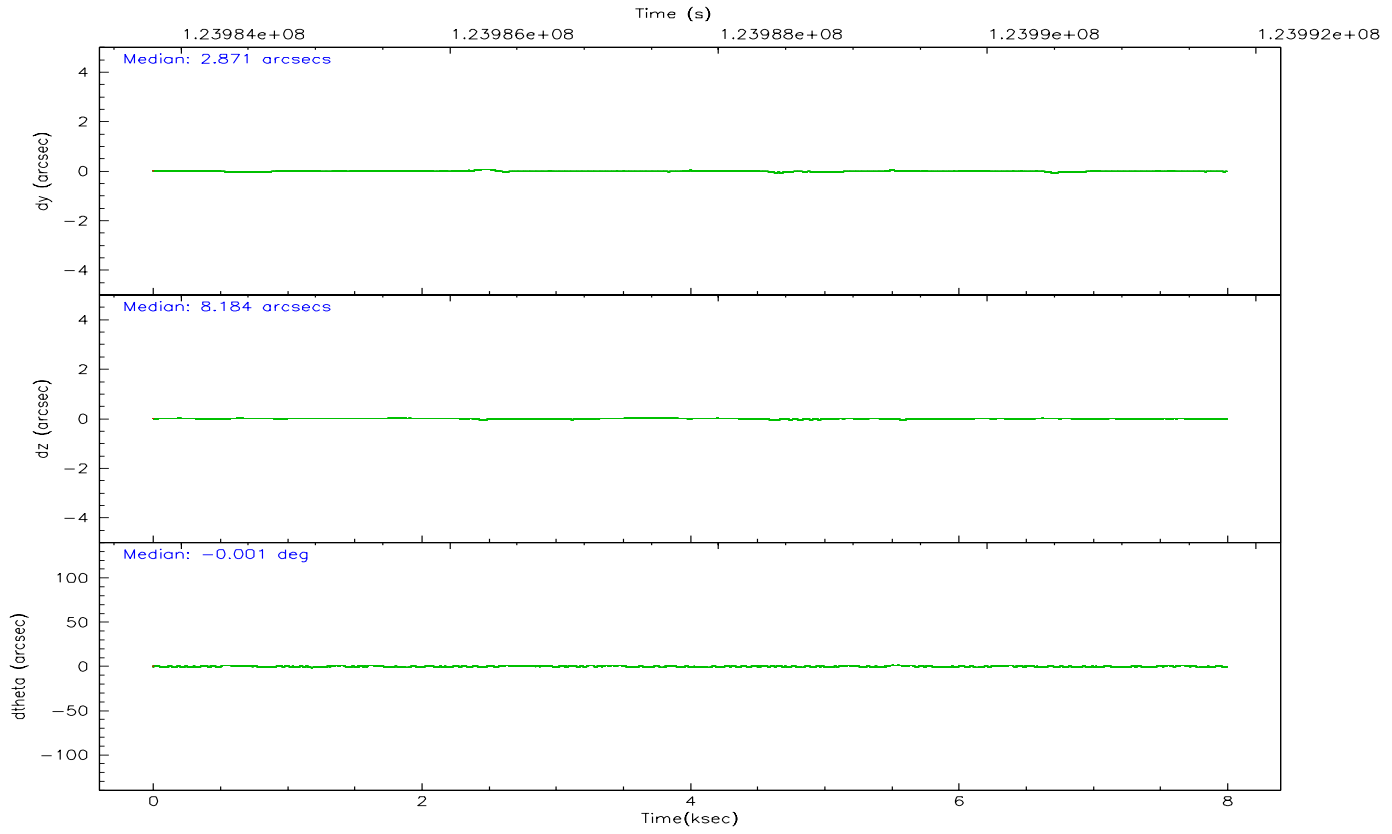
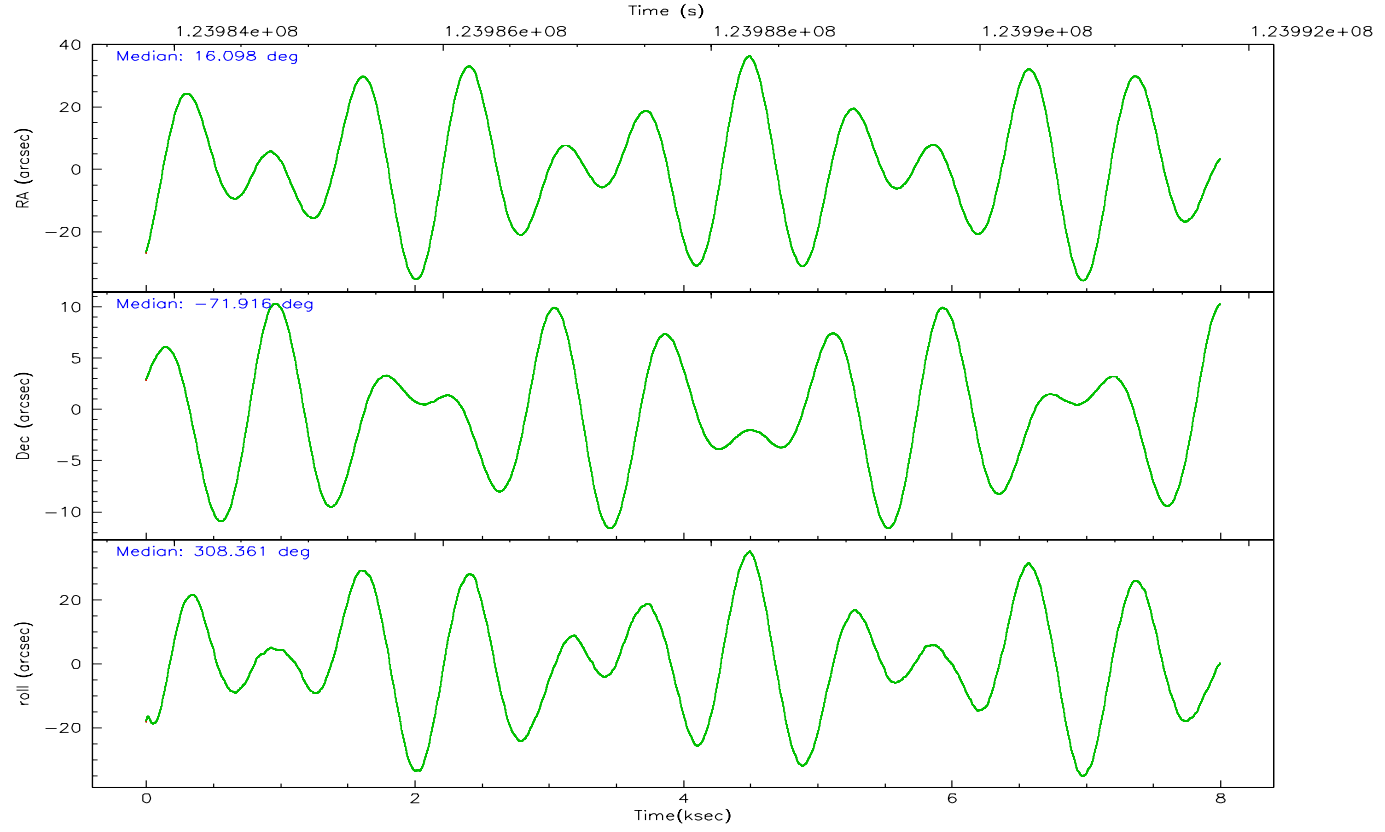
	ccd 0	ccd 1	ccd 2	ccd 3	ccd 6	ccd 7
grade 0 events	24588	2574	2450	2304	2316	2506
	35%	5%	4%	4%	4%	3%
grade 1 events	175	19	30	14	21	56
	0%	0%	0%	0%	0%	0%
grade 2 events	3059	1257	1275	1114	1220	5180
	4%	2%	2%	2%	2%	8%
grade 3 events	977	666	513	567	552	2349
	1%	1%	1%	1%	1%	3%
grade 4 events	932	578	515	515	541	2356
	1%	1%	1%	1%	1%	3%
grade 5 events	1897	1813	1682	1846	2121	6014
	2%	4%	3%	3%	4%	9%
grade 6 events	1267	1125	962	1061	1123	13823
	1%	2%	1%	2%	2%	22%
grade 7 events	36024	36191	42484	40328	42957	30450
	52%	81%	85%	84%	84%	48%

2.2 Compared Parameters

Parameter	Planned	Actual	Parameter	Planned	Actual
Instrument	ACIS	ACIS	Obspar format version number	6	6
Detector	ACIS-012367	ACIS-012367	Obspar file type	PREDICTED	ACTUAL
Grating	NONE	NONE	Obspar update status	NONE	UPDATED
Data mode	FAINT	FAINT	Number of optional ACIS chips dropped	0	0
Observation mode	POINTING	POINTING	On-chip summing requested	N	N
Pointing RA	16.016294	16.09848099045315	Subarray requested	NONE	NONE
Pointing Dec	-71.906417	-71.91648090628809	Alternating exposures requested	N	N
Pointing Roll	308.082532	308.3693697432553	Primary exposure time	0.000000	3.2
Window start time	123552064.184000	123552064.184000			
Window stop time	126144064.184000	126144064.184000			
SIM focus pos (mm)	-0.782348	-0.7809083437167272			
SIM defocus (mm)	0	0.001439871863259334			
SIM translation stage pos (mm)	-233.592463	-233.5874344608287			
SIM translation stage offset (mm)	0	-0.005018542100998502			
Observation start time	123983989.184000	123983612.8718			
Observation start date	2001-12-05T23:58:45	2001-12-05T23:53:32			
Observation end time	123991789.184000	123991923.05963			
Observation end date	2001-12-06T02:08:45	2001-12-06T02:12:03			
Read mode	TIMED	TIMED			

2.3 Aspect



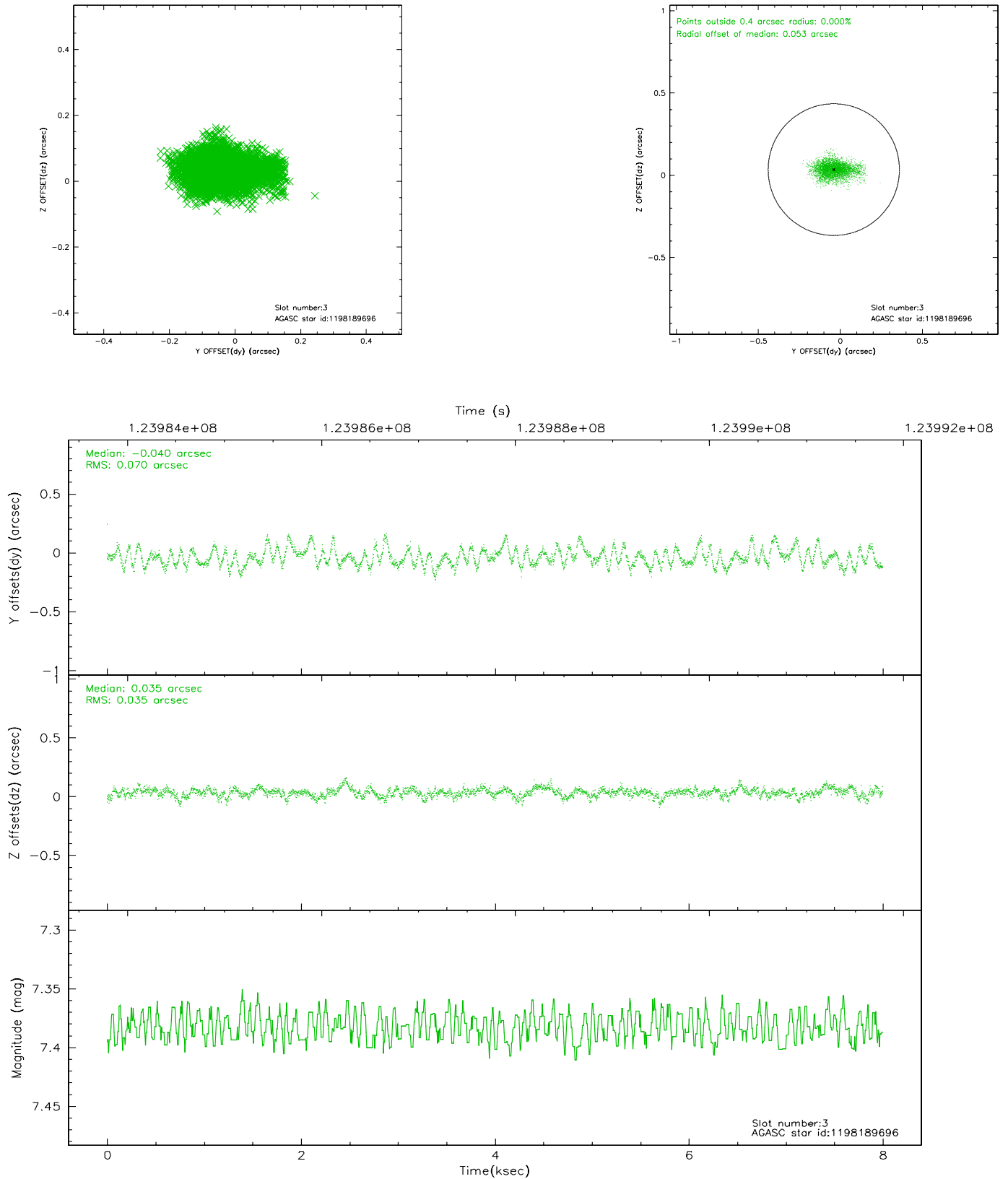


Slot Statistics

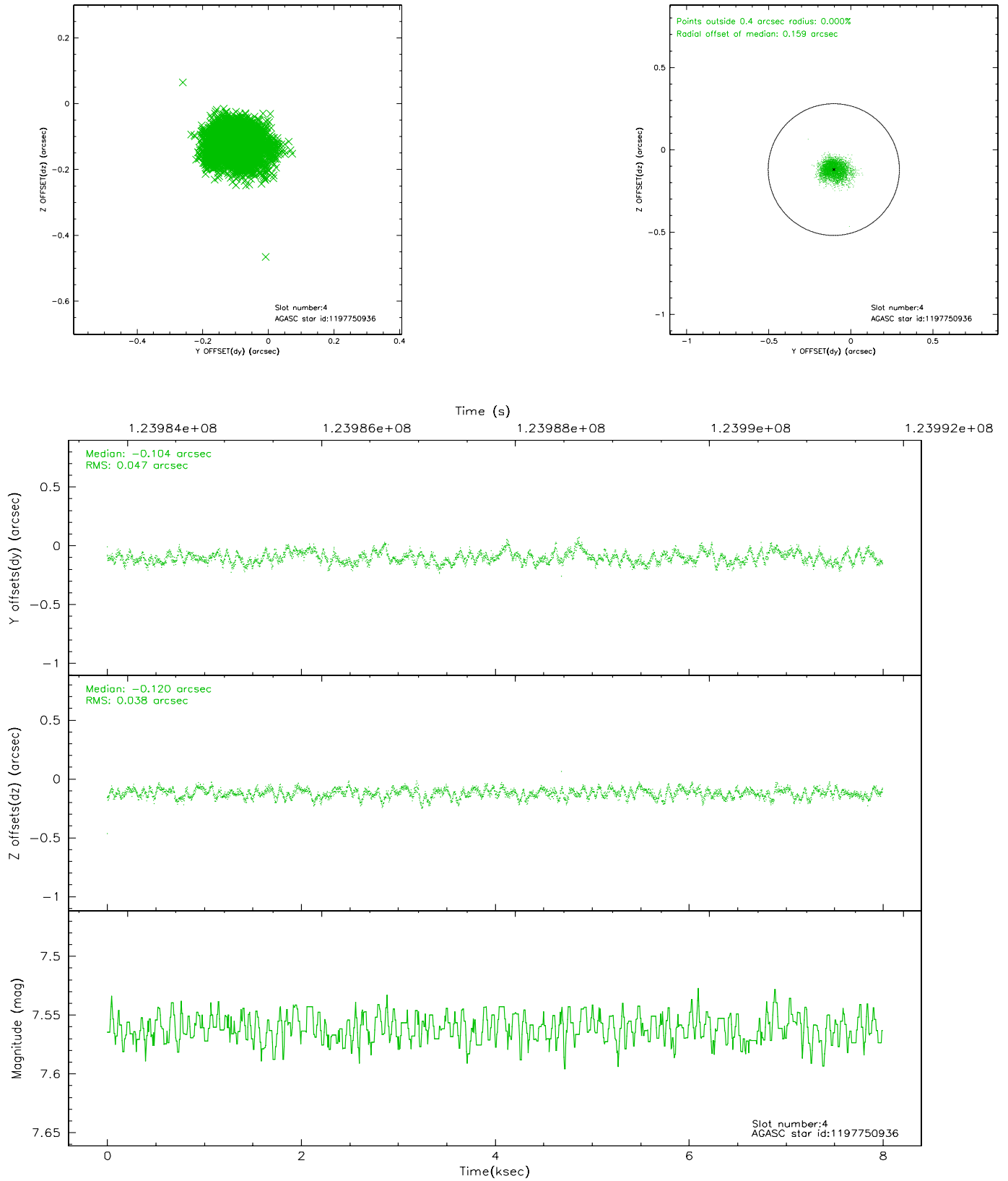
slot	status	id	mag	n_pts	med_dy	med_dz	dr1	dr2	ra	dec	mean_y	mean_z
0	FID	ACIS-I-1	7.24	1952	-0.044	0.088	0.006	0.011	0.000000	0.000000	936.88	-831.53
1	FID	ACIS-I-5	7.24	1951	-0.011	0.030	0.006	0.009	0.000000	0.000000	-1810.79	1065.57
2	FID	ACIS-I-6	7.26	1951	-0.037	-0.048	0.007	0.011	0.000000	0.000000	401.69	1710.78
3	GUIDE	1198189696	7.38	3901	-0.040	0.035	0.080	0.145	15.223750	-72.697522	1723.09	-2427.34
4	GUIDE	1197750936	7.56	3902	-0.104	-0.120	0.064	0.104	15.387940	-71.549550	-1449.51	226.07
5	GUIDE	1197884536	8.49	3901	0.012	0.044	0.076	0.120	17.160729	-71.835289	599.66	1161.96
6	GUIDE	1197878768	9.62	3900	0.098	-0.037	0.123	0.201	16.656786	-71.304581	-1246.58	1916.32
7	GUIDE	1197749416	10.25	3883	0.039	0.076	0.193	0.314	13.610513	-71.871242	-1719.14	-2074.74

2.4 Star Slots

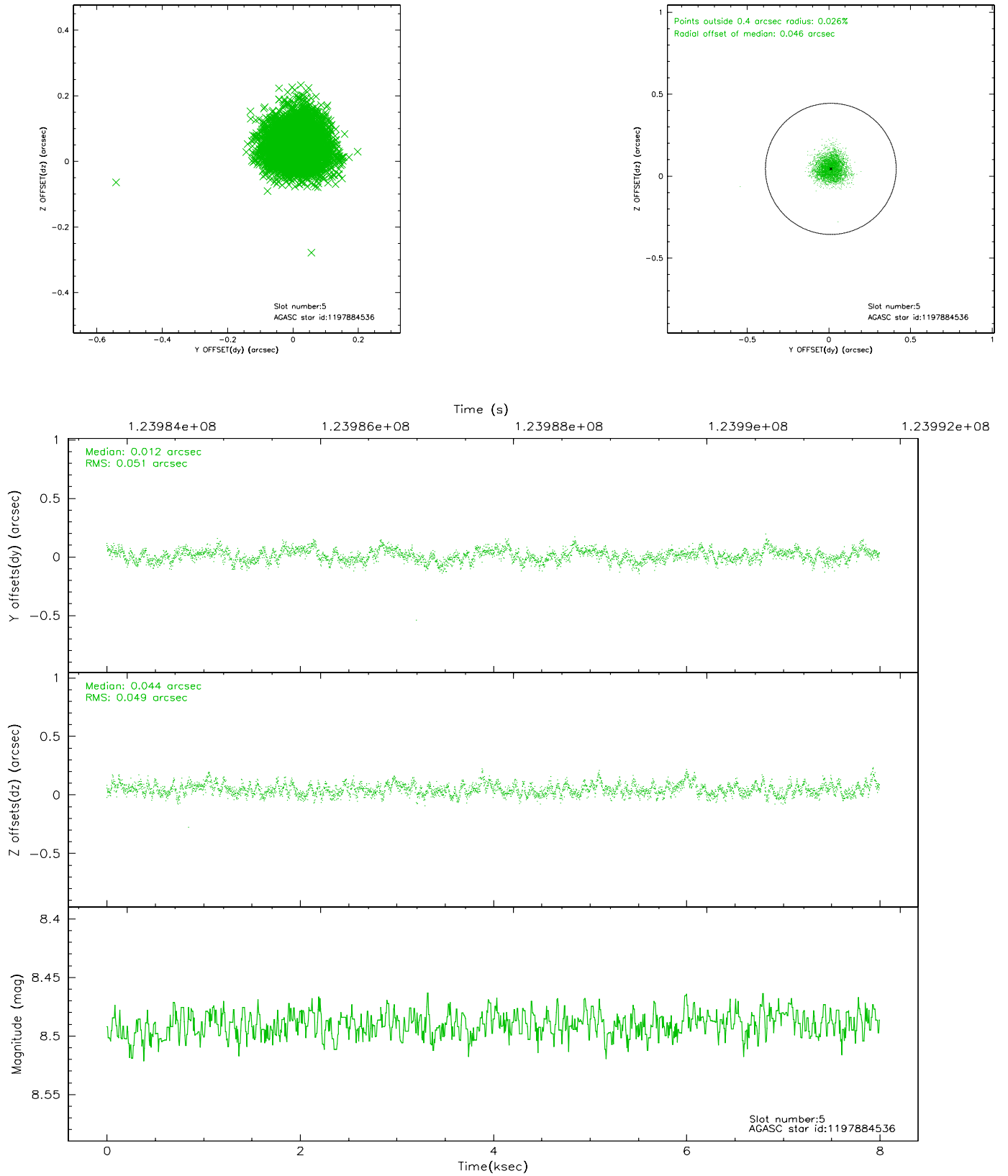
2.4.1 Slot 3



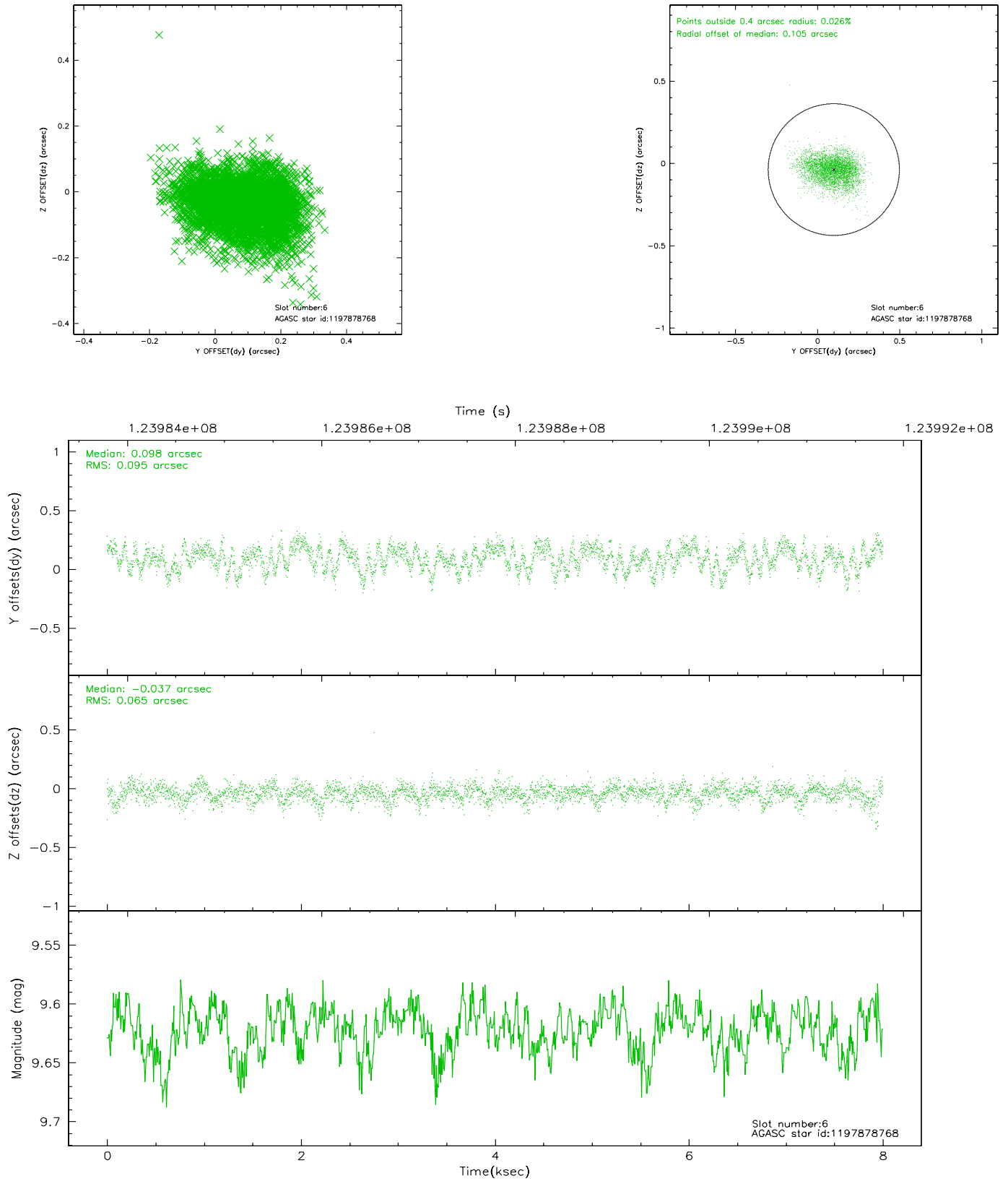
2.4.2 Slot 4



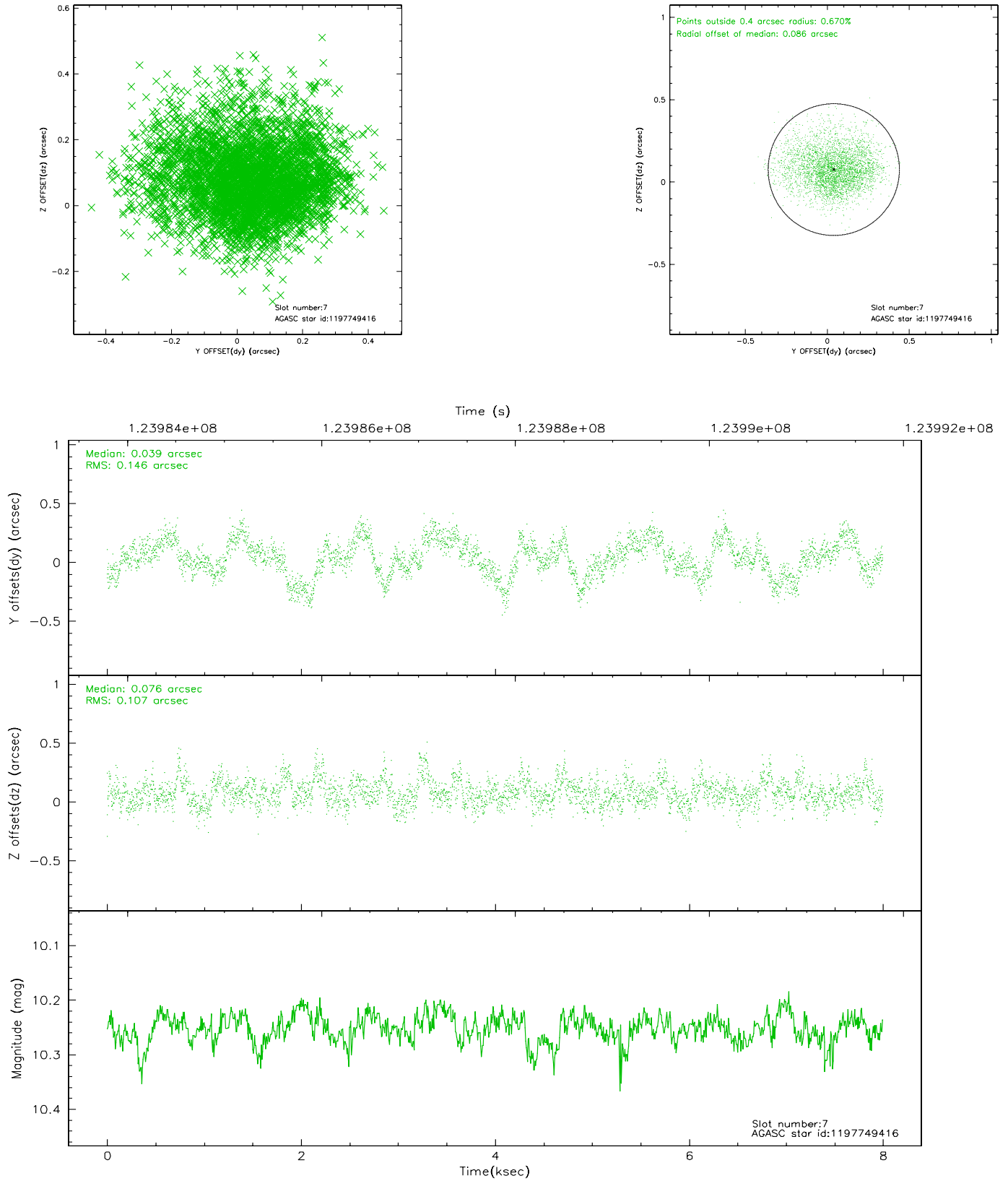
2.4.3 Slot 5



2.4.4 Slot 6

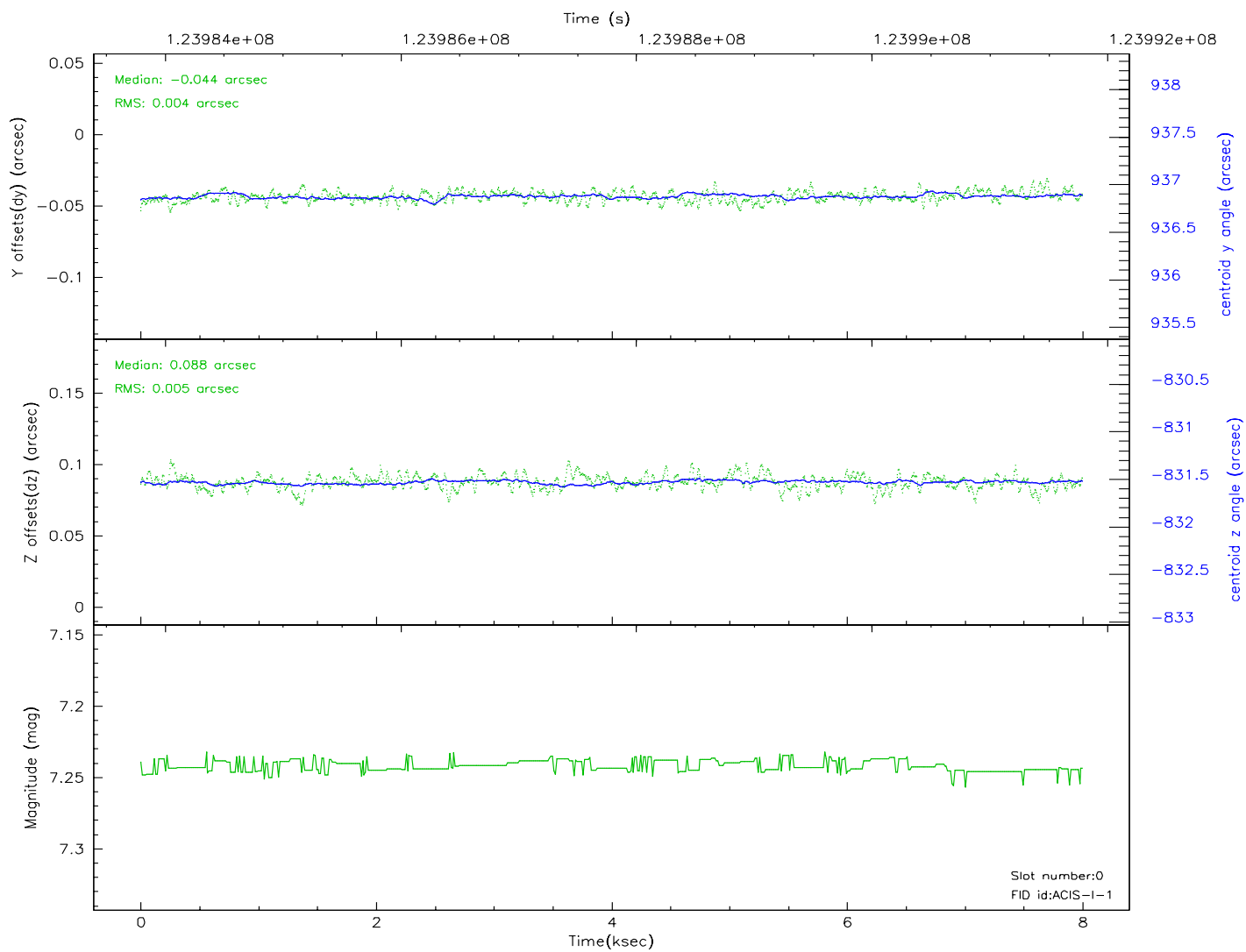
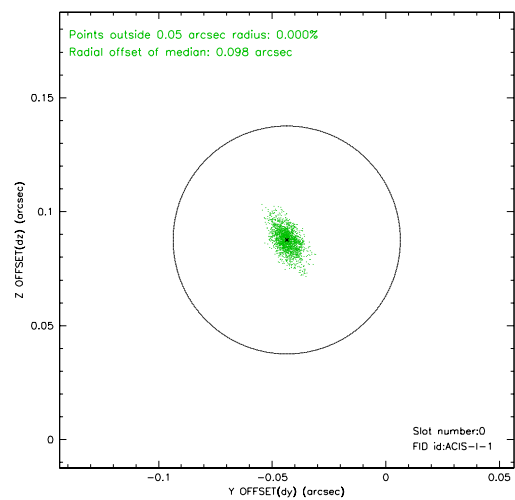
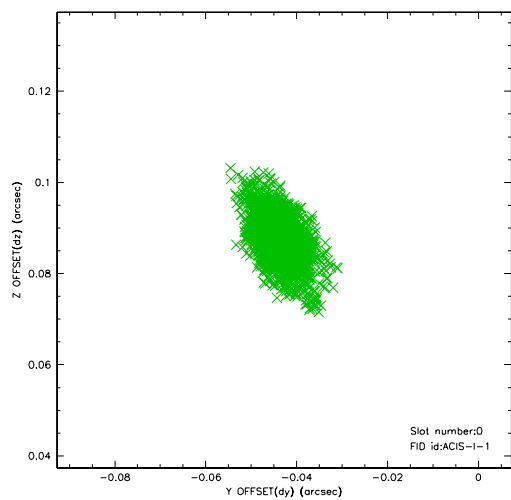


2.4.5 Slot 7

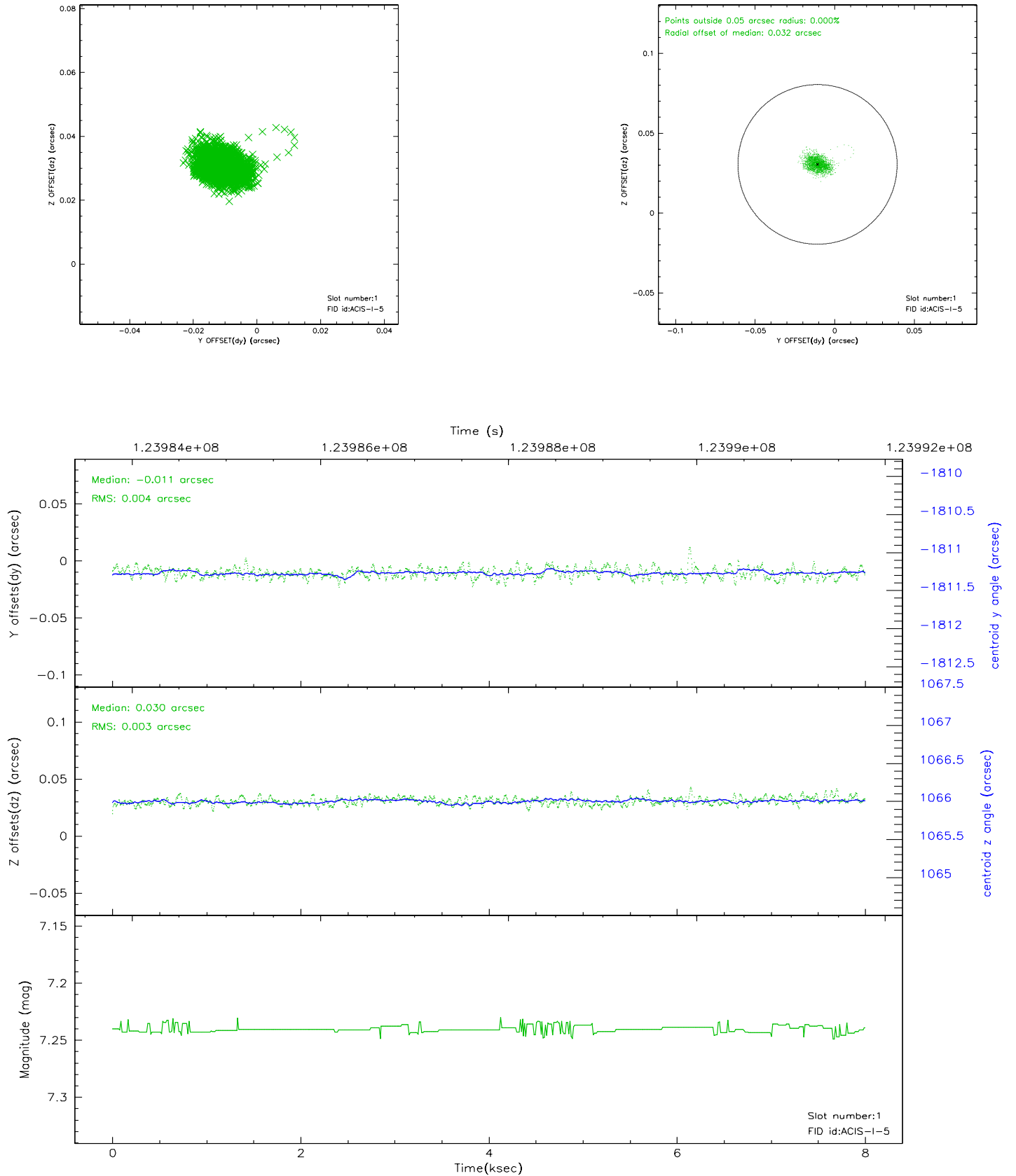


2.5 FID Slots

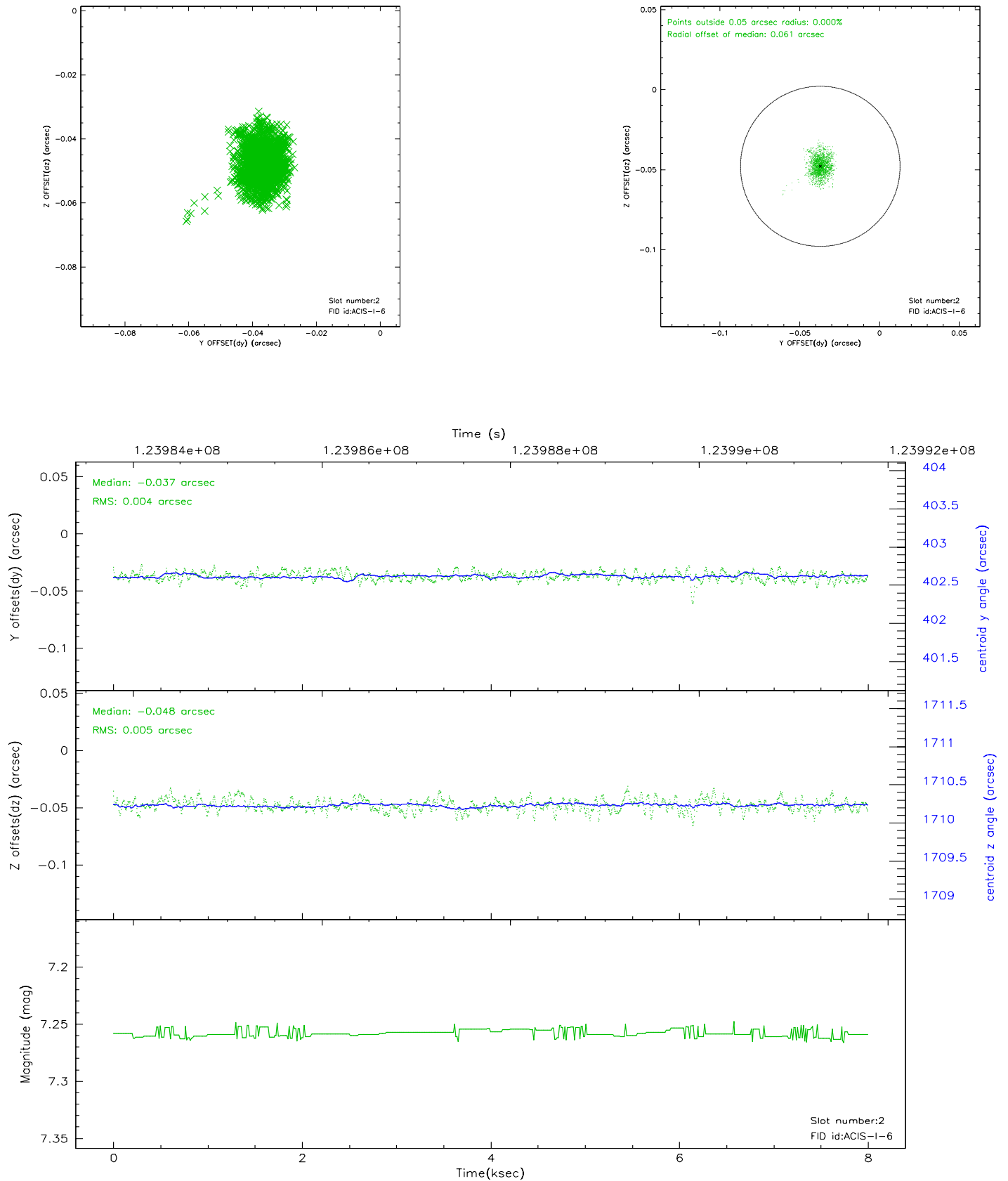
2.5.1 Slot 0



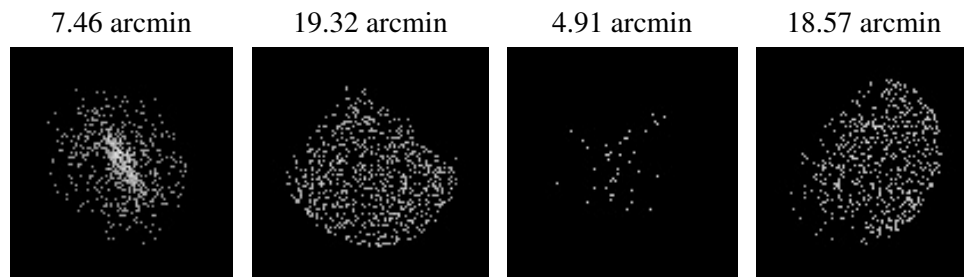
2.5.2 Slot 1



2.5.3 Slot 2



3 Point Sources



A Summary

A.1 Status

V&V Scientist	Joy Nichols
V&V Date (YYYY-MM-DD)	2007.02.23
V&V Edition	1
V&V Disposition and Status	OK
V&V Charge Time	7.561

A.2 Comments