

V&V Reference Report

L2 ASCDS Version : 7.6.10

Observation 2837 - L2 Version 001
Chandra X-Ray Center

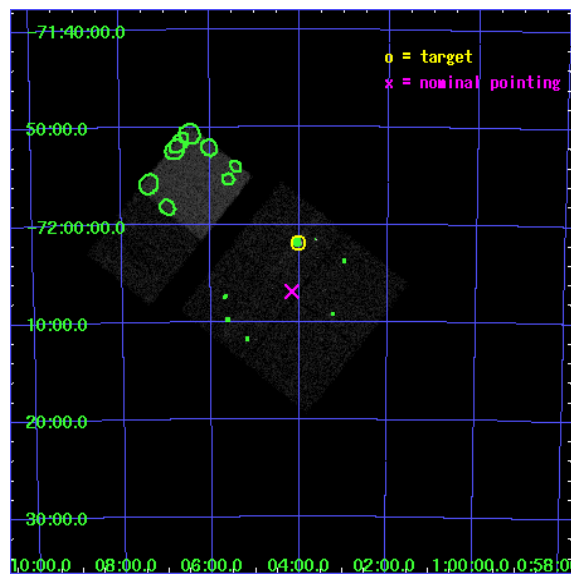
L2 Processing Date : Jan 21 2007

Contents

1	Front	2
2	OBI	3
2.1	OBI	3
2.1.1	Images	3
2.1.2	Bias	3
2.1.3	Parameters	4
2.1.4	Events	4
2.2	Compared Parameters	5
2.3	Aspect	6
2.4	Star Slots	9
2.4.1	Slot 3	9
2.4.2	Slot 4	10
2.4.3	Slot 5	11
2.4.4	Slot 6	12
2.4.5	Slot 7	13
2.5	FID Slots	14
2.5.1	Slot 0	14
2.5.2	Slot 1	15
2.5.3	Slot 2	16
3	Point Sources	17
A	Summary	18
A.1	Status	18
A.2	Comments	18

1 Front

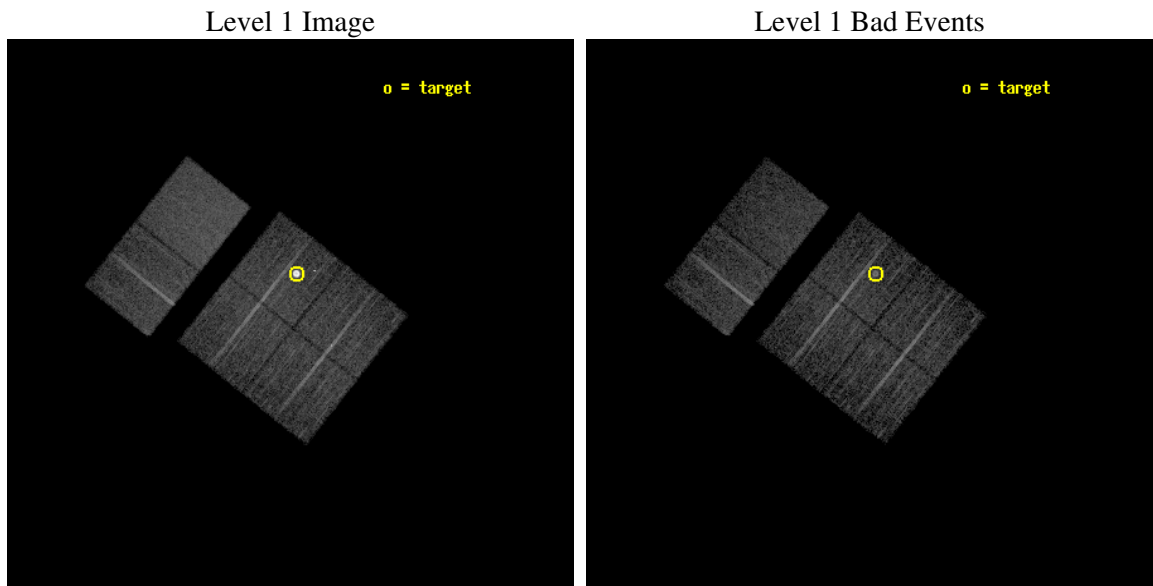
seq_num	590226
obs_id	2837
title	AO3A ACIS-I CALIBRATION OBSERVATIONS OF E0102-72
observer	Dr. CXC Calibration
object	E0102-72.3 [Chip I3, T=120, Offsets=-4,2,0]
dtcycle	0
cycle	P
ra_targ	16.01
dec_targ	-72.032028
ra_nom	16.042133475883
dec_nom	-72.114718546828
roll_nom	308.55680015169
revision	2
ontime	7558.4000070393
livetime	7462.6909950281
ontime0	7558.4000070393
ontime1	7558.4000070393
ontime2	7558.4000070393
ontime3	7558.4000070393
ontime6	7558.4000070393
ontime7	7558.4000070393
l2events	76914



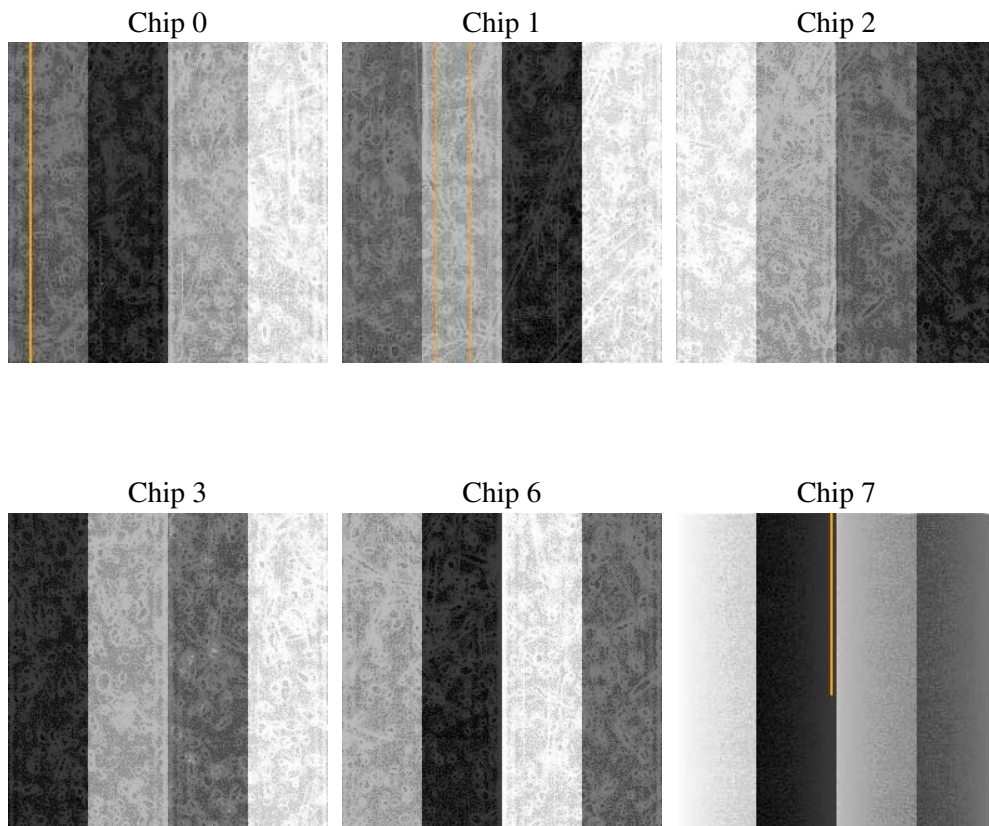
2 OBI

2.1 OBI

2.1.1 Images



2.1.2 Bias



2.1.3 Parameters

obi_num	1
ascdsver	7.6.10
caldbver	3.3.0
date	2007-01-20T12:44:33
revision	2

sched_exp_time	7800.000000
ontime	7558.4000070393
ontime0	7558.4000070393
ontime1	7558.4000070393
ontime2	7558.4000070393
ontime3	7558.4000070393
ontime6	7558.4000070393
ontime7	7558.4000070393
l1events	326604

2.1.4 Events

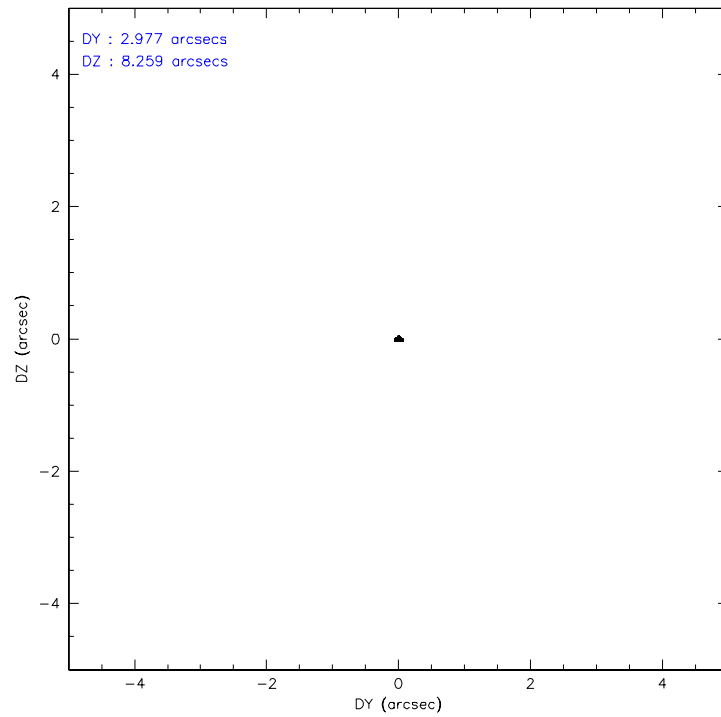
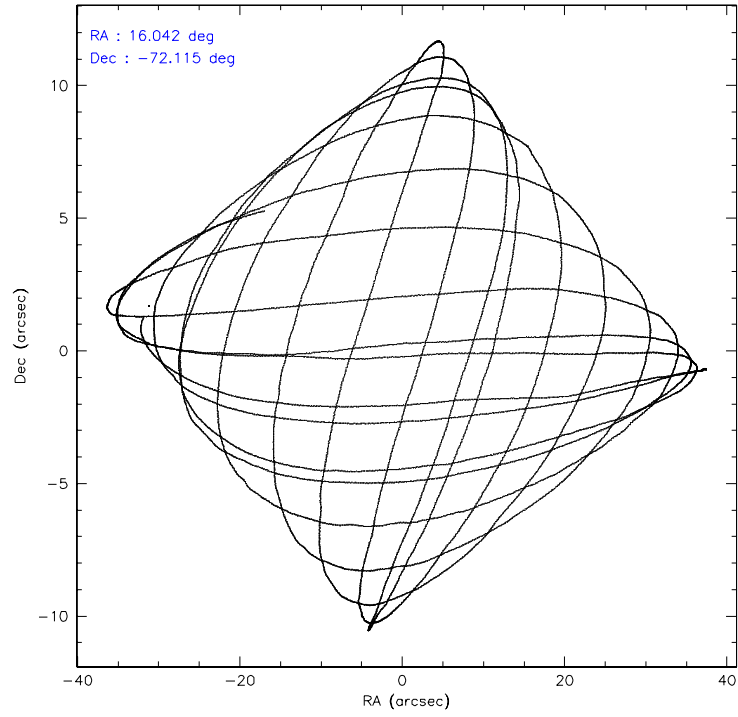
	ccd 0	ccd 1	ccd 2	ccd 3	ccd 6	ccd 7
level 1 events	45633	46296	48084	74482	49570	62539
rejected events	39700	39597	41822	42240	43676	36460
rejected %	86%	85%	86%	56%	88%	58%

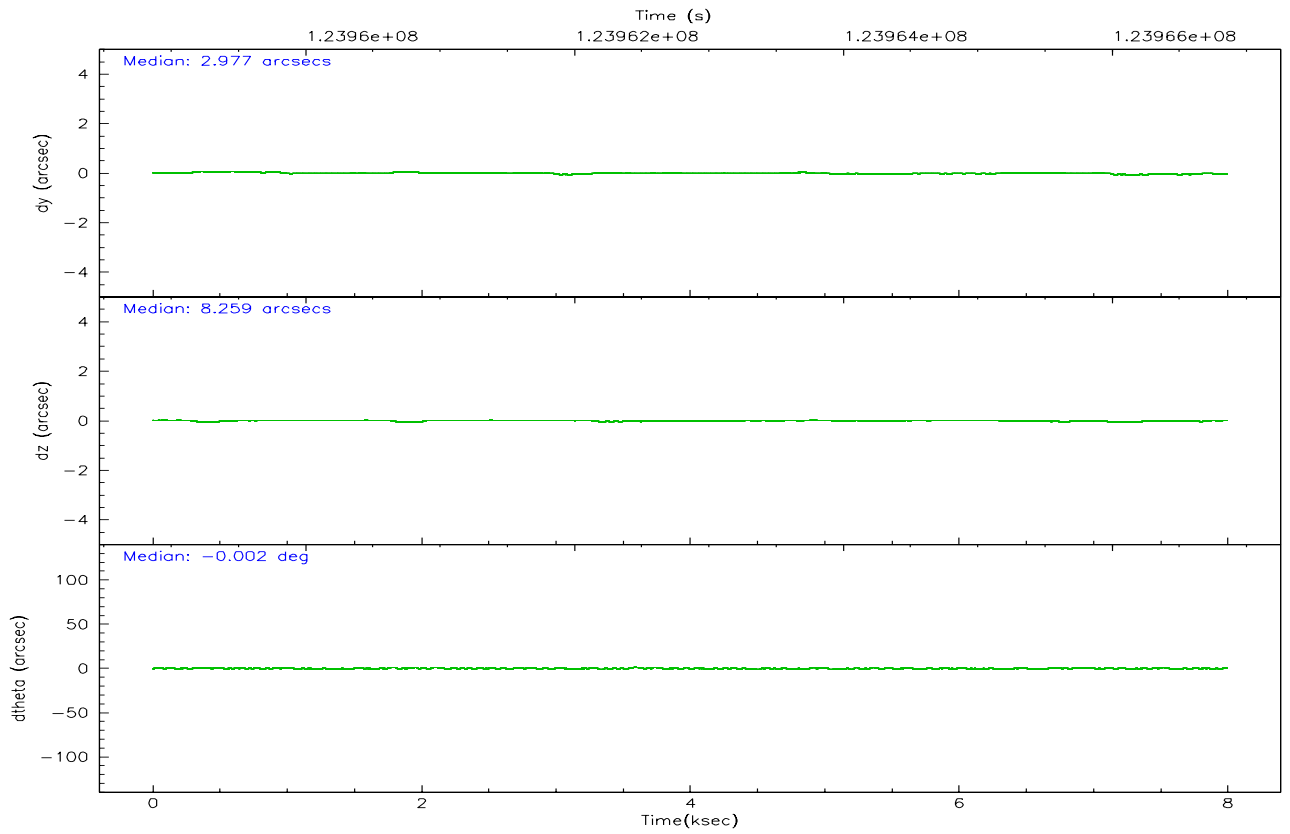
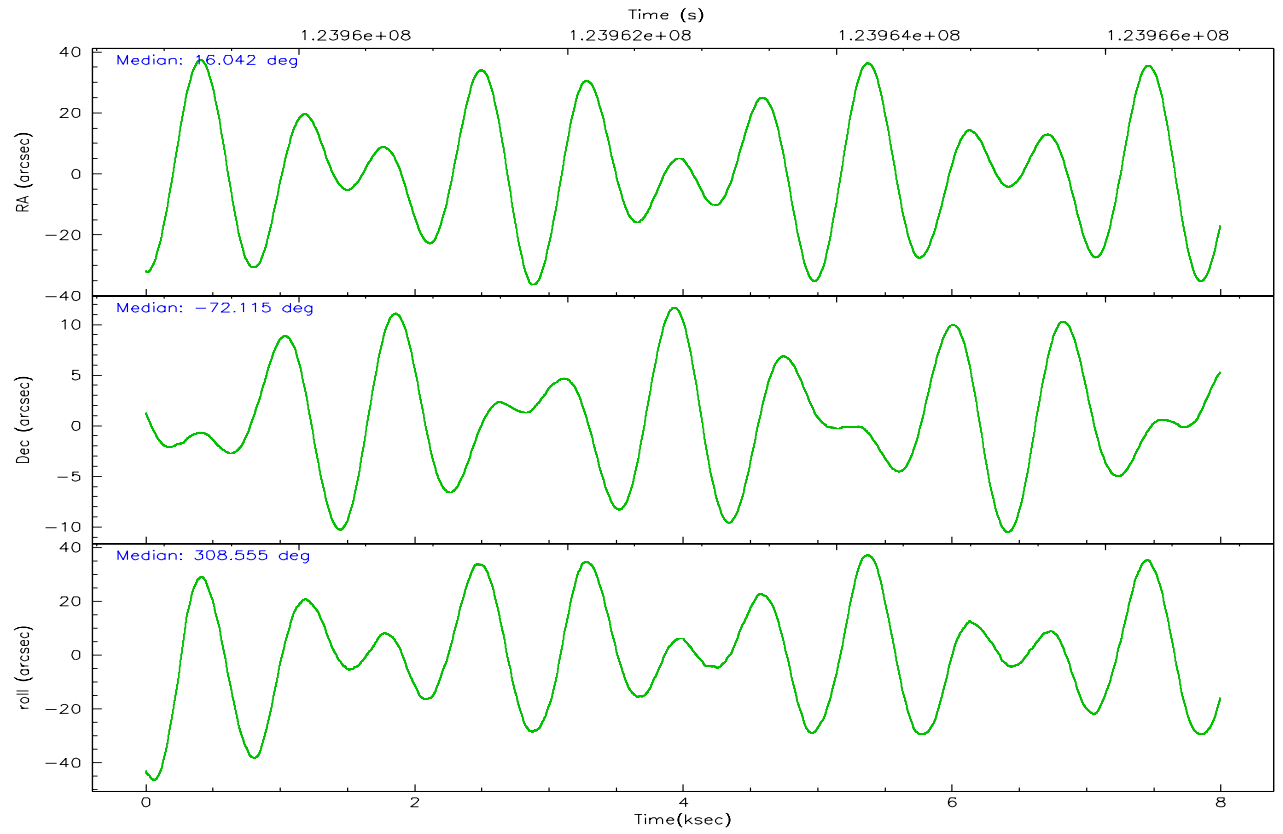
	ccd 0	ccd 1	ccd 2	ccd 3	ccd 6	ccd 7
grade 0 events	2594	2995	3089	26114	2452	2534
	5%	6%	6%	35%	4%	4%
grade 1 events	41	32	30	255	16	53
	0%	0%	0%	0%	0%	0%
grade 2 events	1265	1297	1186	2968	1180	5137
	2%	2%	2%	3%	2%	8%
grade 3 events	565	625	502	953	548	2430
	1%	1%	1%	1%	1%	3%
grade 4 events	503	624	525	981	567	2331
	1%	1%	1%	1%	1%	3%
grade 5 events	1785	1895	1588	1943	2162	5931
	3%	4%	3%	2%	4%	9%
grade 6 events	1012	1170	964	1257	1148	13682
	2%	2%	2%	1%	2%	21%
grade 7 events	37868	37658	40200	40011	41497	30441
	82%	81%	83%	53%	83%	48%

2.2 Compared Parameters

Parameter	Planned	Actual	Parameter	Planned	Actual
Instrument	ACIS	ACIS	Obspar format version number	6	6
Detector	ACIS-012367	ACIS-012367	Obspar file type	PREDICTED	ACTUAL
Grating	NONE	NONE	Obspar update status	NONE	UPDATED
Data mode	FAINT	FAINT	Number of optional ACIS chips dropped	0	0
Observation mode	POINTING	POINTING	On-chip summing requested	N	N
Pointing RA	15.959105	16.04213347588256	Subarray requested	NONE	NONE
Pointing Dec	-72.104695	-72.11471854682816	Alternating exposures requested	N	N
Pointing Roll	308.269104	308.5568001516876	Primary exposure time	0.000000	3.2
Window start time	123552064.184000	123552064.184000			
Window stop time	126144064.184000	126144064.184000			
SIM focus pos (mm)	-0.782348	-0.7809083437167272			
SIM defocus (mm)	0	0.001439871863259334			
SIM translation stage pos (mm)	-233.592463	-233.5874344608287			
SIM translation stage offset (mm)	0	-0.005018542100998502			
Observation start time	123959059.184000	123958682.8208			
Observation start date	2001-12-05T17:03:15	2001-12-05T16:58:02			
Observation end time	123966859.184000	123966993.00864			
Observation end date	2001-12-05T19:13:15	2001-12-05T19:16:33			
Read mode	TIMED	TIMED			

2.3 Aspect



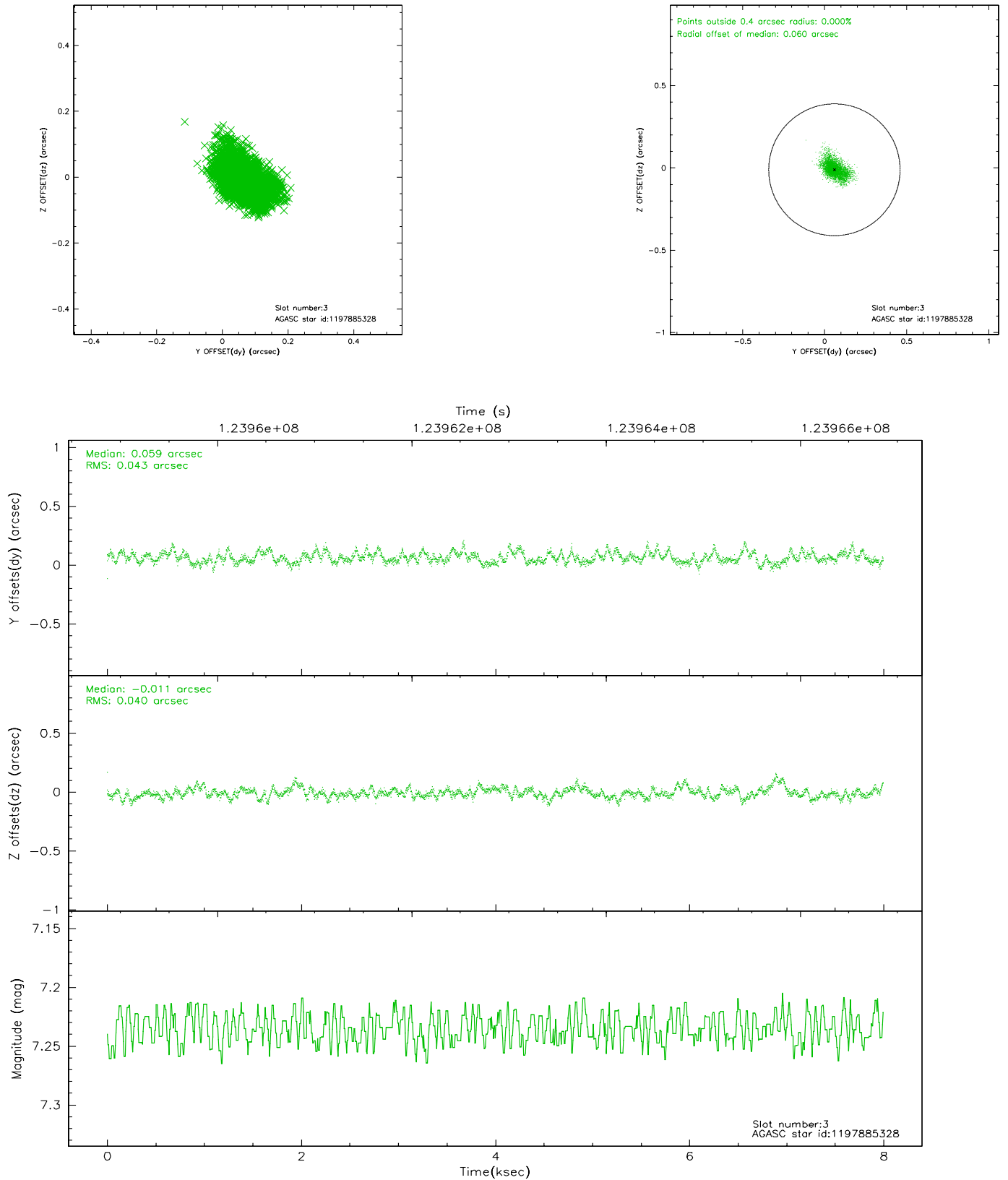


Slot Statistics

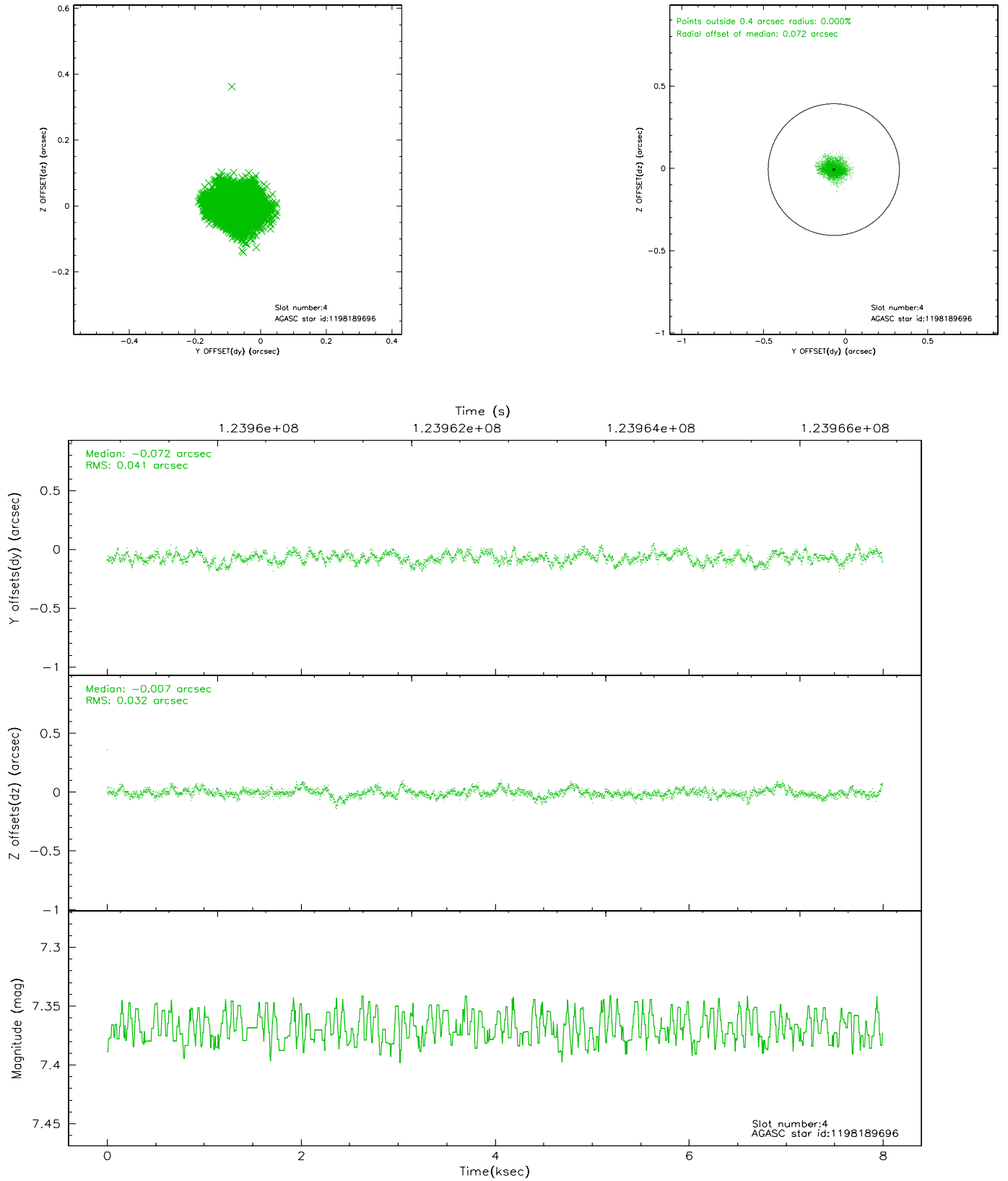
slot	status	id	mag	n_pts	med_dy	med_dz	dr1	dr2	ra	dec	mean_y	mean_z
0	FID	ACIS-I-1	7.24	1950	-0.047	0.090	0.006	0.010	0.000000	0.000000	936.76	-831.60
1	FID	ACIS-I-5	7.24	1950	-0.013	0.027	0.006	0.010	0.000000	0.000000	-1810.90	1065.49
2	FID	ACIS-I-6	7.26	1950	-0.031	-0.047	0.006	0.011	0.000000	0.000000	401.58	1710.71
3	GUIDE	1197885328	7.24	3901	0.059	-0.011	0.061	0.105	16.283090	-71.733943	-820.95	1113.57
4	GUIDE	1198189696	7.37	3901	-0.072	-0.007	0.056	0.090	15.223750	-72.697522	1191.26	-1942.29
5	GUIDE	1197750936	7.56	3895	0.063	-0.016	0.062	0.111	15.387940	-71.549550	-1969.59	724.70
6	GUIDE	1198283128	8.01	3900	-0.125	0.040	0.052	0.091	17.272580	-72.642428	2404.66	-100.40
7	GUIDE	1197749416	10.25	3799	0.071	-0.004	0.175	0.303	13.610513	-71.871242	-2248.07	-1575.95

2.4 Star Slots

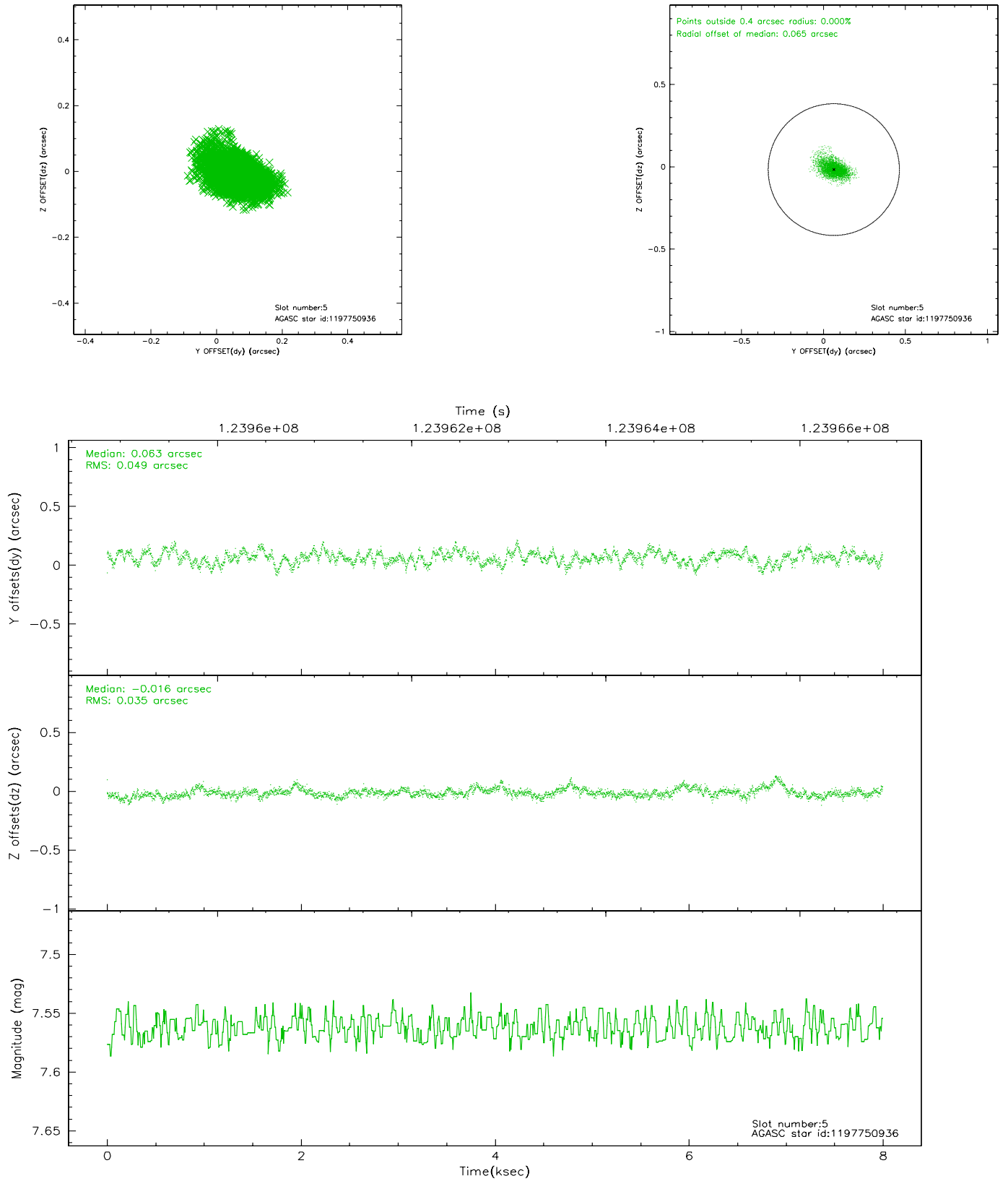
2.4.1 Slot 3



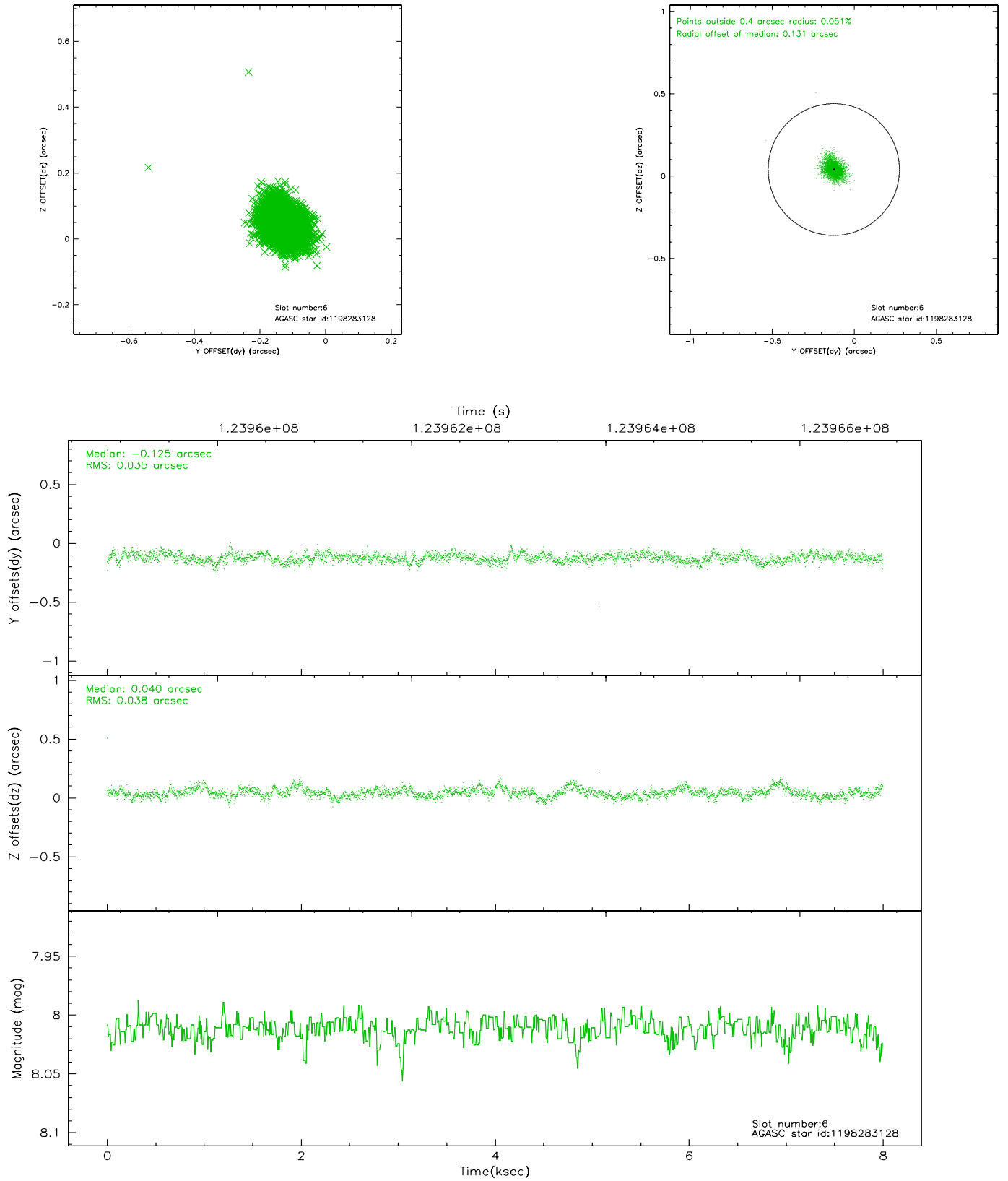
2.4.2 Slot 4



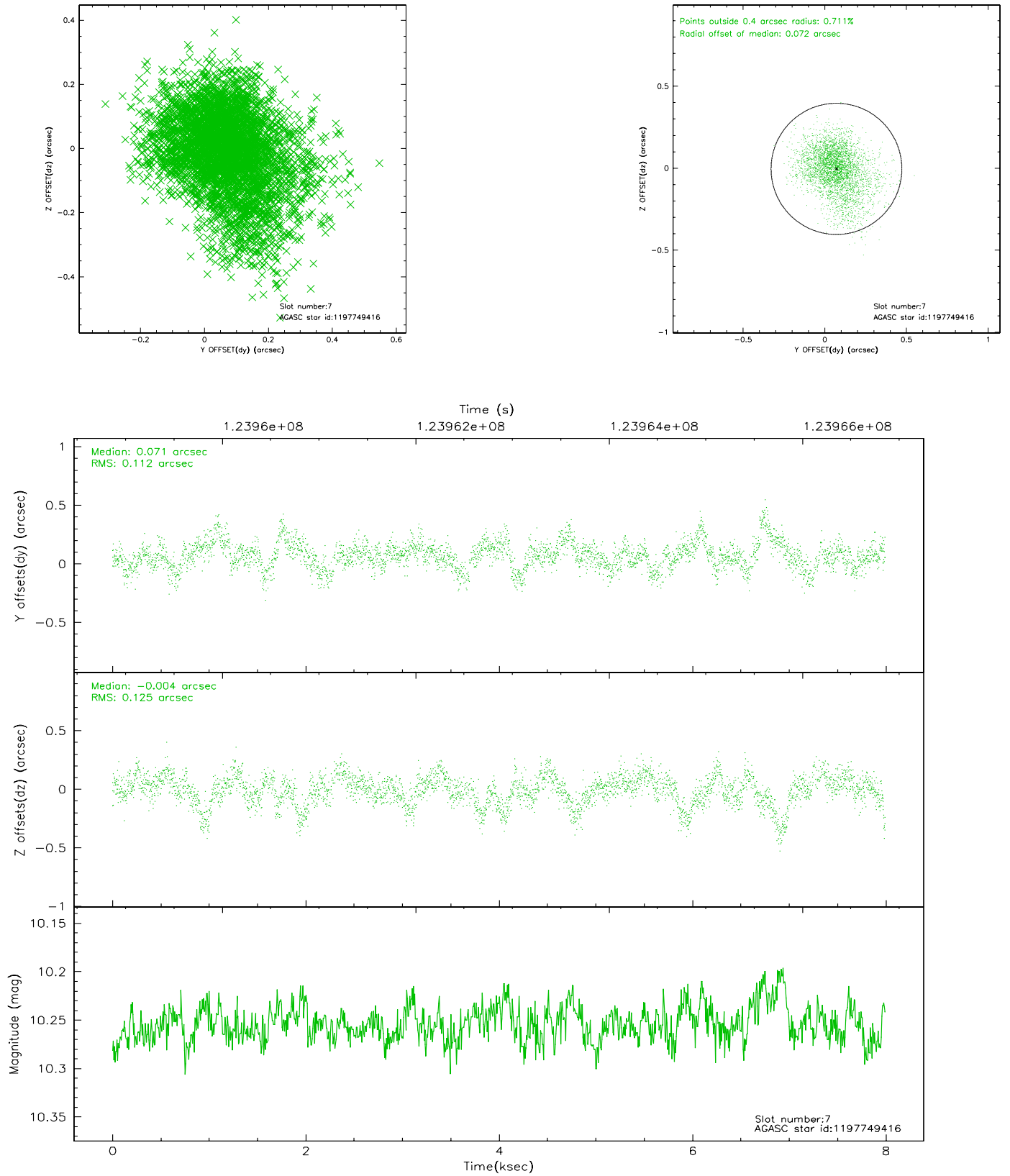
2.4.3 Slot 5



2.4.4 Slot 6

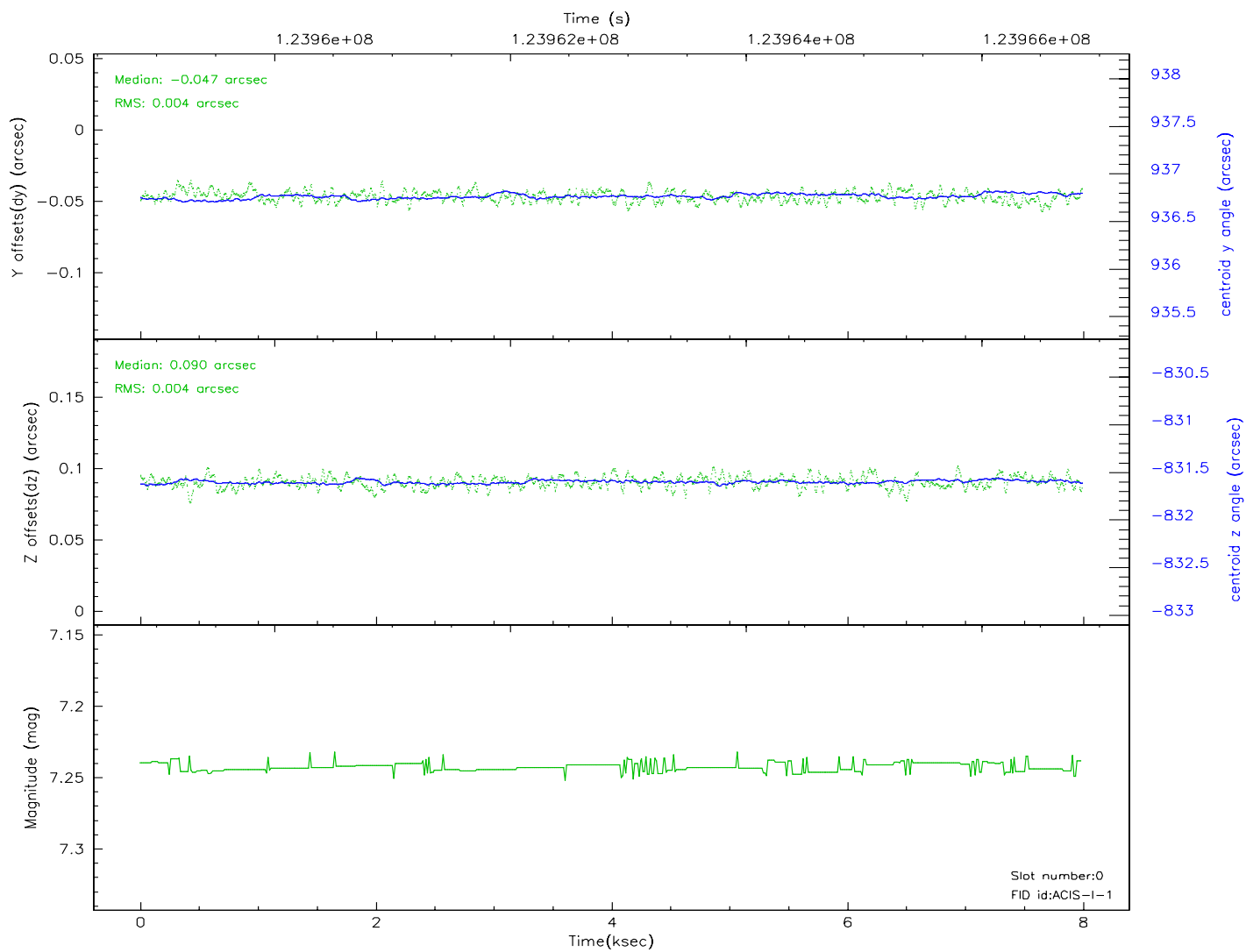
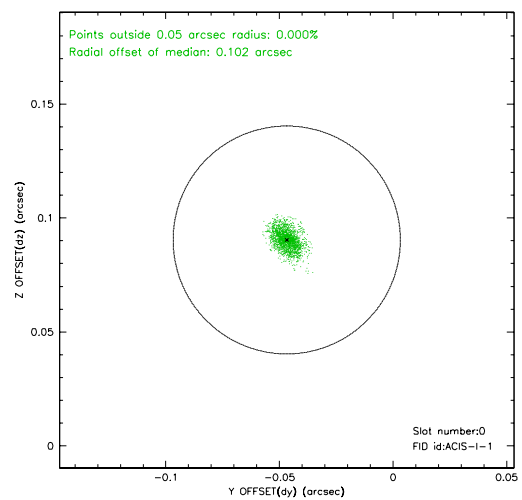
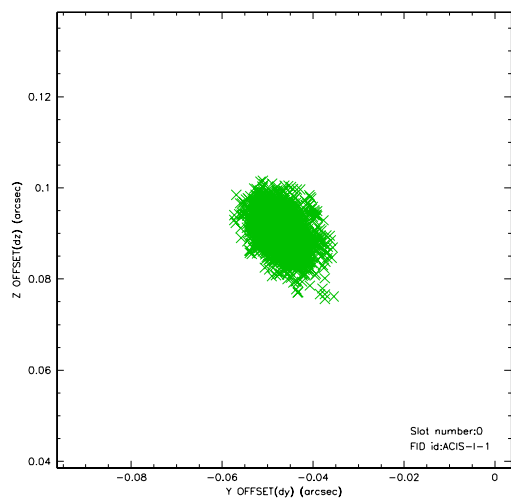


2.4.5 Slot 7

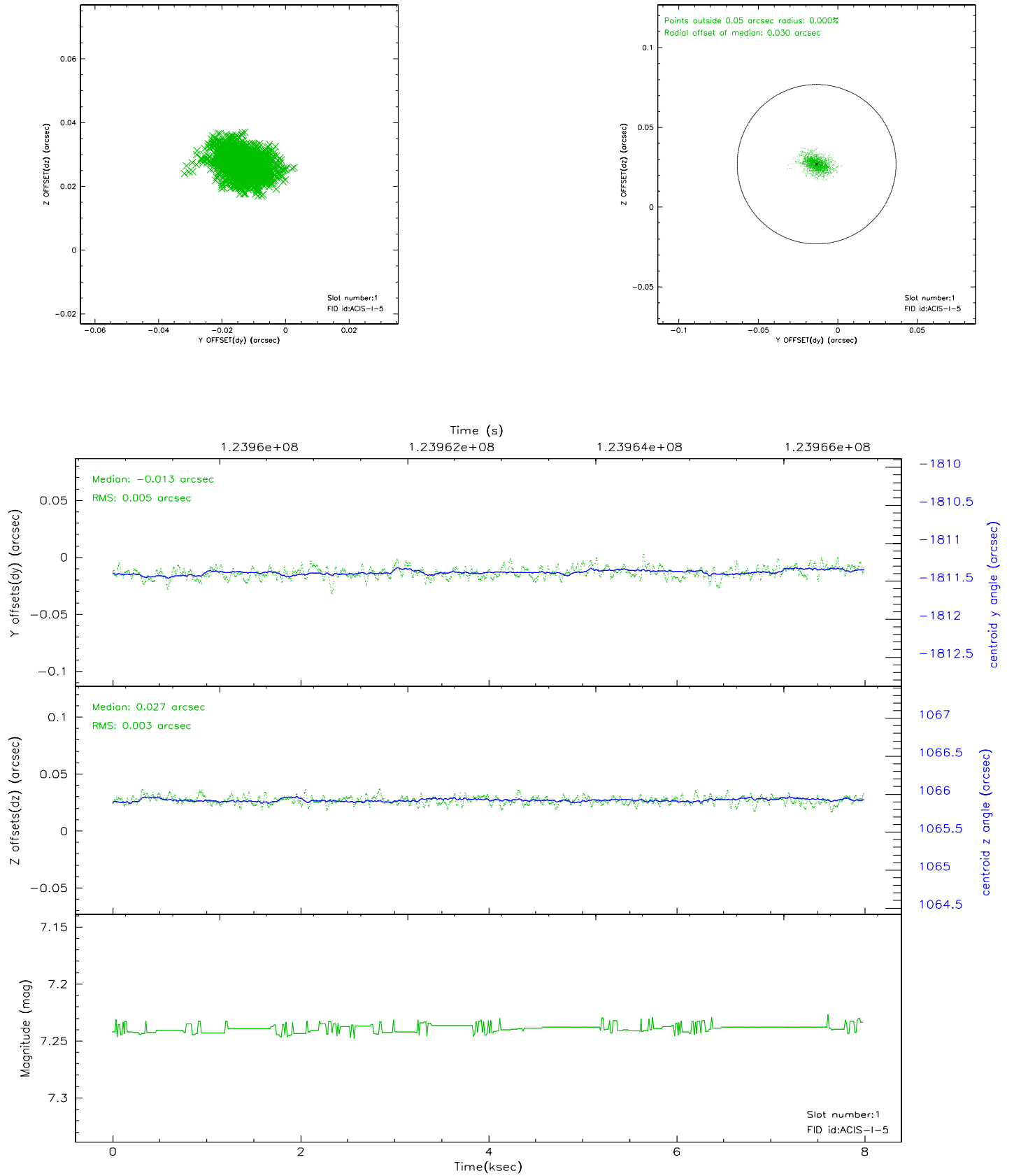


2.5 FID Slots

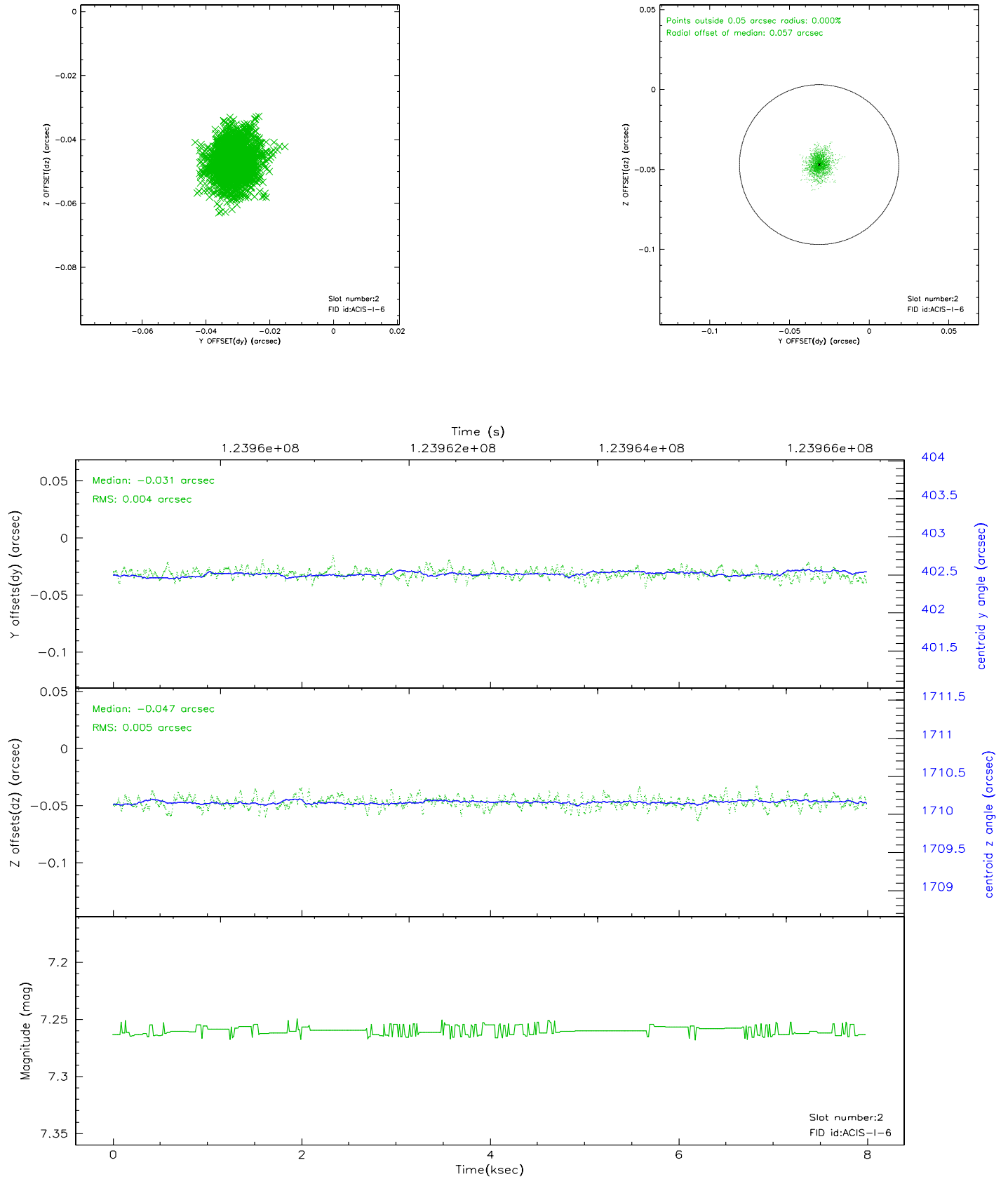
2.5.1 Slot 0



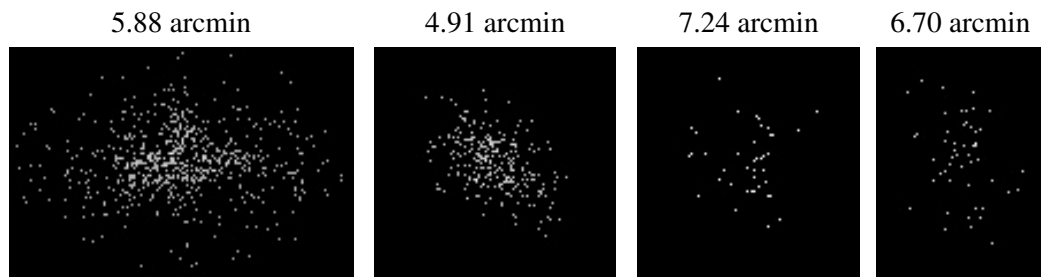
2.5.2 Slot 1



2.5.3 Slot 2



3 Point Sources



A Summary

A.1 Status

V&V Scientist	Beth Sundheim
V&V Date (YYYY-MM-DD)	2007.01.21
V&V Edition	1
V&V Disposition and Status	OK
V&V Charge Time	7.561

A.2 Comments