

V&V Reference Report

L2 ASCDS Version : 7.6.10

Observation 2835 - L2 Version 001
Chandra X-Ray Center

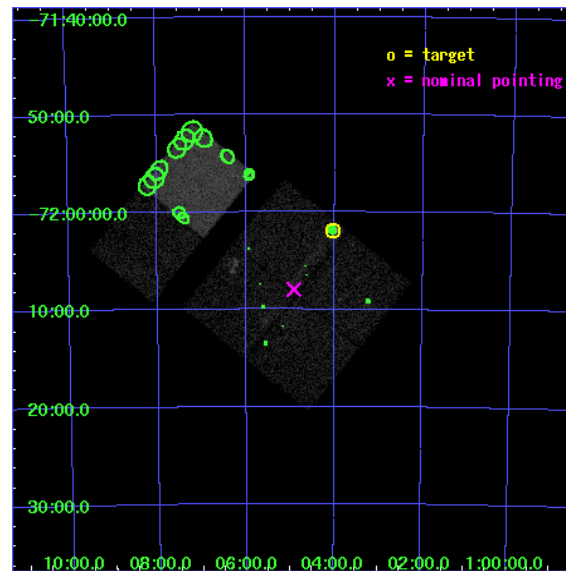
L2 Processing Date : Jan 22 2007

Contents

1	Front	2
2	OBI	3
2.1	OBI	3
2.1.1	Images	3
2.1.2	Bias	3
2.1.3	Parameters	4
2.1.4	Events	4
2.2	Compared Parameters	5
2.3	Aspect	6
2.4	Star Slots	9
2.4.1	Slot 3	9
2.4.2	Slot 4	10
2.4.3	Slot 5	11
2.4.4	Slot 6	12
2.4.5	Slot 7	13
2.5	FID Slots	14
2.5.1	Slot 0	14
2.5.2	Slot 1	15
3	Point Sources	16
A	Summary	17
A.1	Status	17
A.2	Comments	17

1 Front

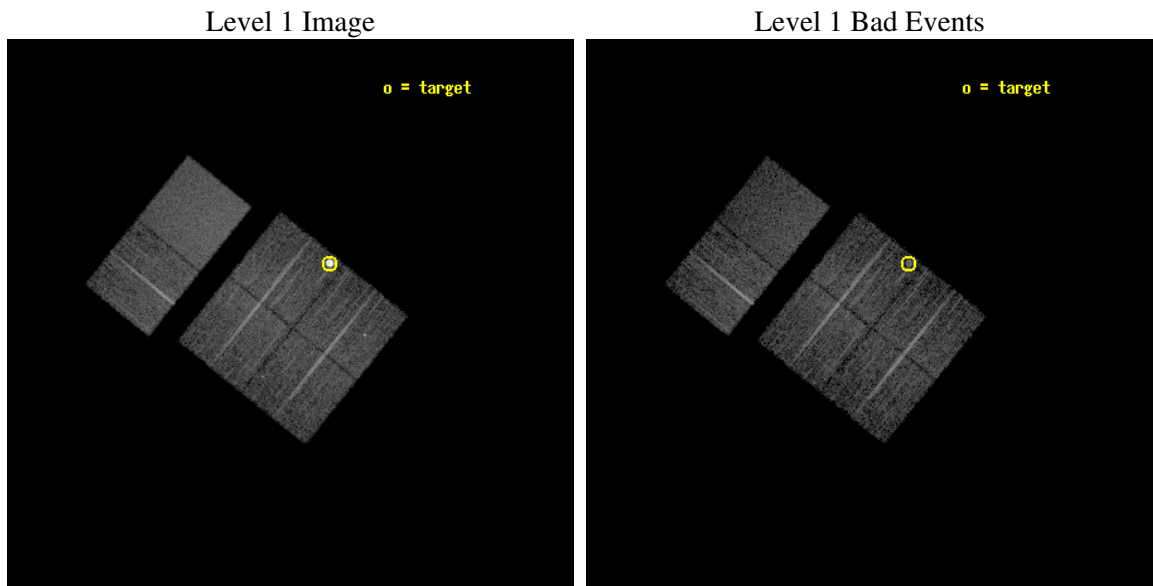
seq_num	590224
obs_id	2835
title	AO3A ACIS-I CALIBRATION OBSERVATIONS OF E0102-72
observer	Dr. CXC Calibration
object	E0102-72.3 [Chip I3, T=120, Offsets=-7,0,0]
dtcycle	0
cycle	P
ra_targ	16.01
dec_targ	-72.032028
ra_nom	16.229651608317
dec_nom	-72.132894857718
roll_nom	308.91897433229
revision	3
ontime	7932.800007388
livetime	7832.3501171357
ontime0	7929.5590272099
ontime1	7929.5590471327
ontime2	7932.800007388
ontime3	7932.800007388
ontime6	7929.5589872897
ontime7	7932.800007388
l2events	78086



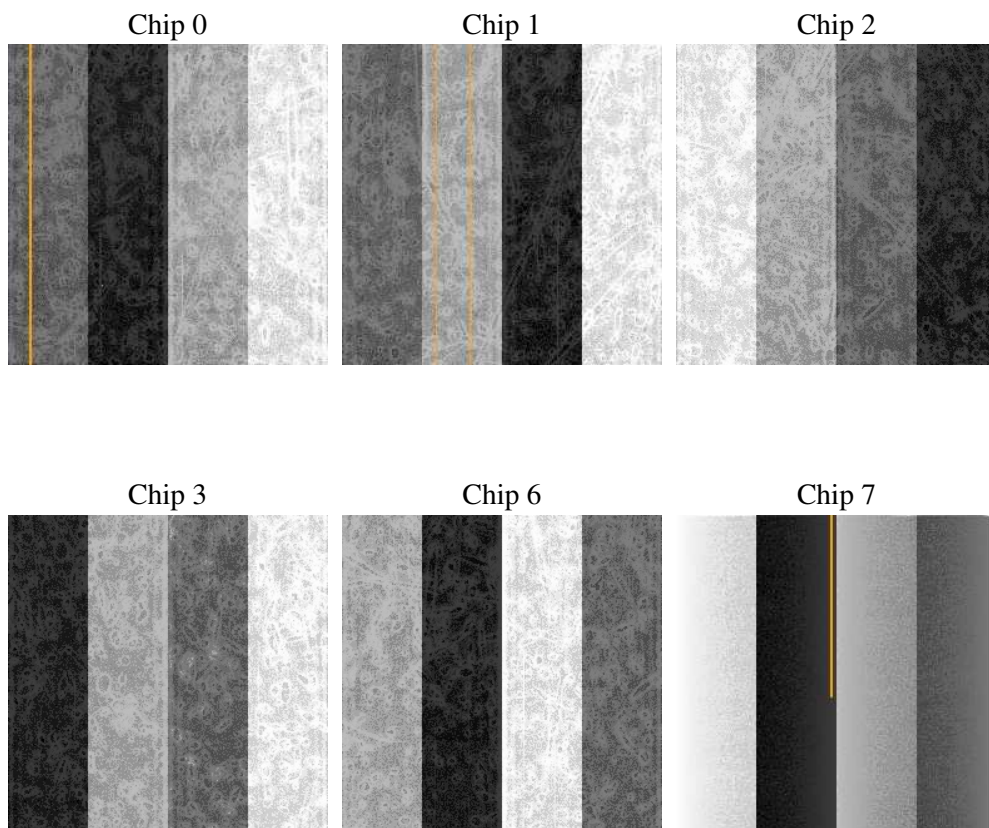
2 OBI

2.1 OBI

2.1.1 Images



2.1.2 Bias



2.1.3 Parameters

obi_num	1
ascdsver	7.6.10
caldbver	3.3.0
date	2007-01-22T13:53:53
revision	3

sched_exp_time	7800.000000
ontime	7932.800007388
ontime0	7929.5590272099
ontime1	7929.5590471327
ontime2	7932.800007388
ontime3	7932.800007388
ontime6	7929.5589872897
ontime7	7932.800007388
l1events	339318

2.1.4 Events

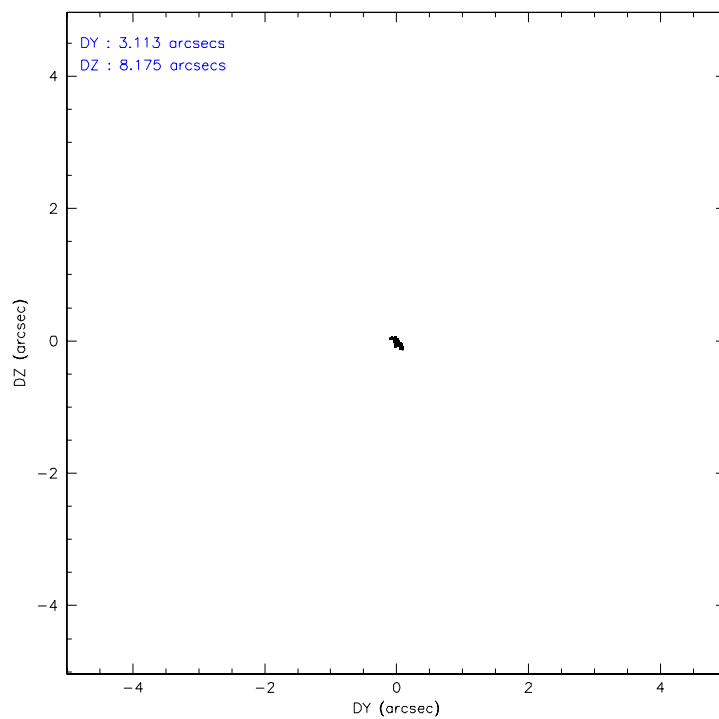
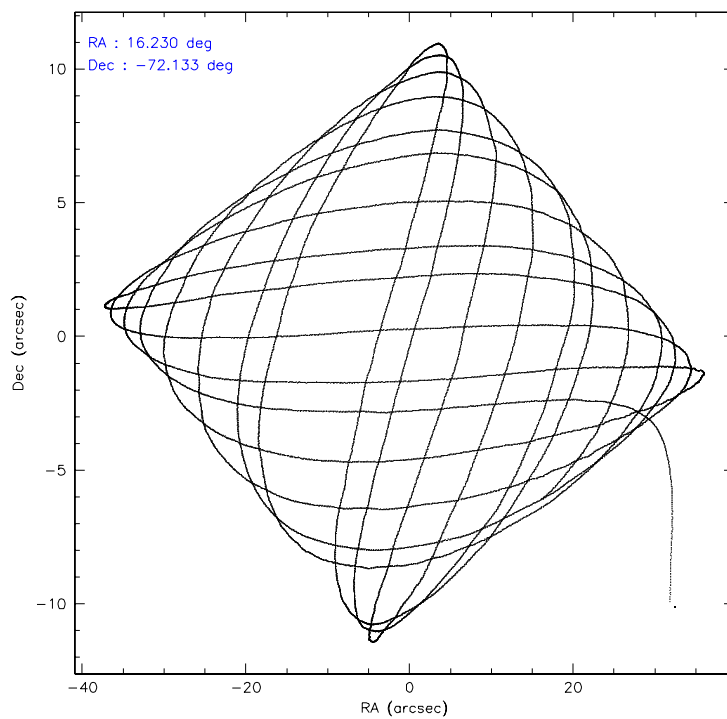
	ccd 0	ccd 1	ccd 2	ccd 3	ccd 6	ccd 7
level 1 events	45911	48283	51700	73968	53178	66278
rejected events	39254	41290	45098	44739	47088	38647
rejected %	85%	85%	87%	60%	88%	58%

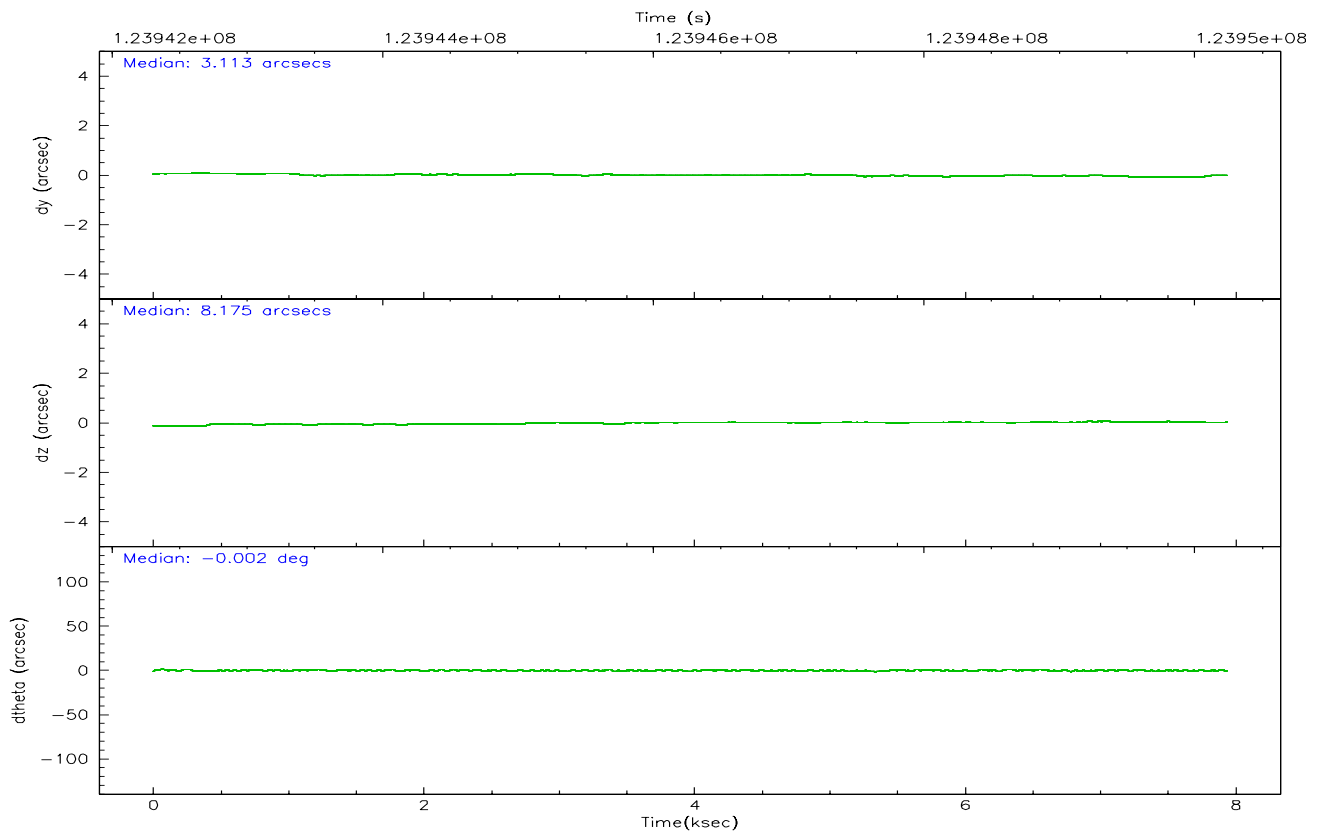
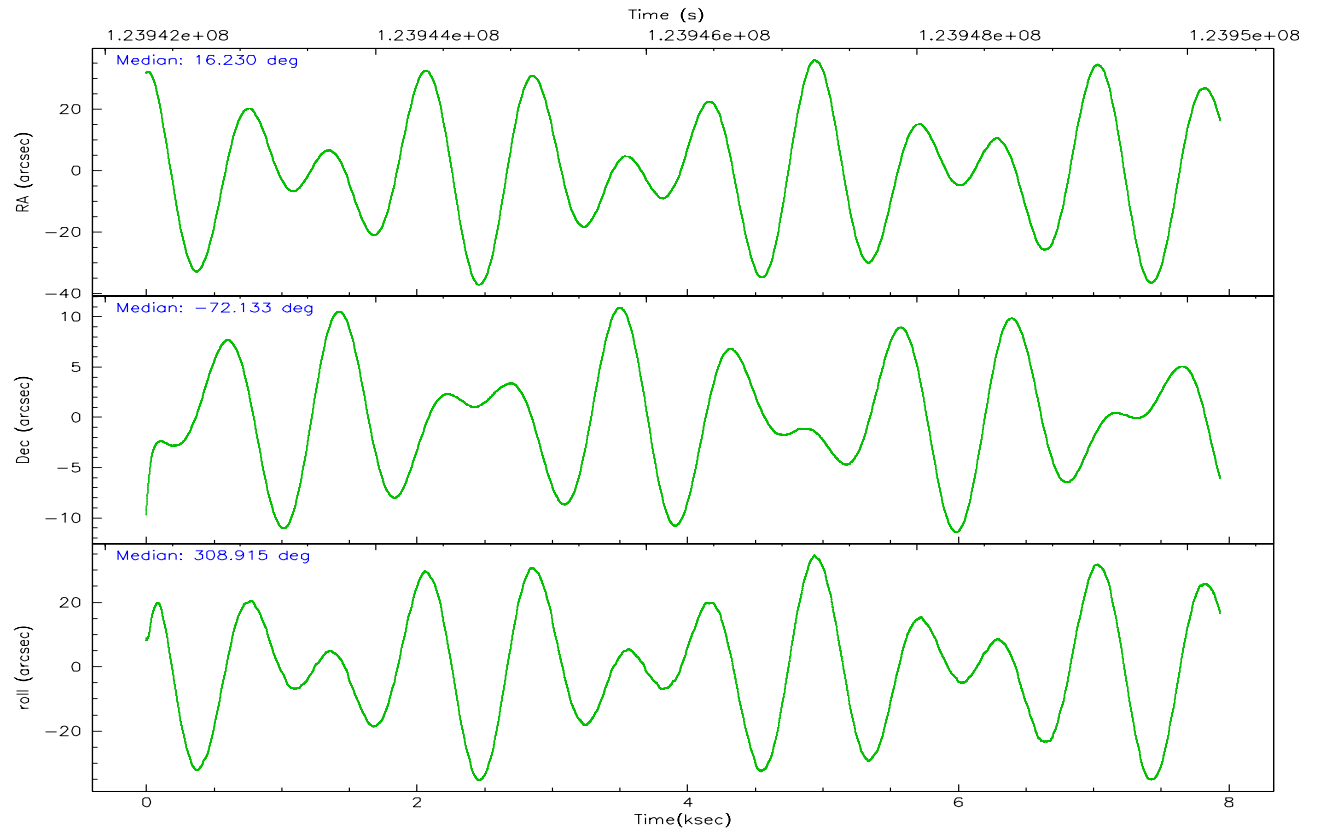
	ccd 0	ccd 1	ccd 2	ccd 3	ccd 6	ccd 7
grade 0 events	2963	3133	3170	23098	2476	2723
	6%	6%	6%	31%	4%	4%
grade 1 events	22	23	22	197	29	52
	0%	0%	0%	0%	0%	0%
grade 2 events	1336	1444	1374	3003	1256	5460
	2%	2%	2%	4%	2%	8%
grade 3 events	651	639	520	962	589	2500
	1%	1%	1%	1%	1%	3%
grade 4 events	544	654	563	1018	606	2433
	1%	1%	1%	1%	1%	3%
grade 5 events	1840	2057	1720	2028	2287	6332
	4%	4%	3%	2%	4%	9%
grade 6 events	1202	1155	998	1281	1185	14638
	2%	2%	1%	1%	2%	22%
grade 7 events	37353	39178	43333	42381	44750	32140
	81%	81%	83%	57%	84%	48%

2.2 Compared Parameters

Parameter	Planned	Actual	Parameter	Planned	Actual
Instrument	ACIS	ACIS	Obspar format version number	6	6
Detector	ACIS-012367	ACIS-012367	Obspar file type	PREDICTED	ACTUAL
Grating	NONE	NONE	Obspar update status	NONE	UPDATED
Data mode	FAINT	FAINT	Number of optional ACIS chips dropped	0	0
Observation mode	POINTING	POINTING	On-chip summing requested	N	N
Pointing RA	16.146220	16.22965160831659	Subarray requested	NONE	NONE
Pointing Dec	-72.123102	-72.13289485771763	Alternating exposures requested	N	N
Pointing Roll	308.630914	308.918974332293	Primary exposure time	0.000000	3.2
Window start time	123552064.184000	123552064.184000			
Window stop time	126144064.184000	126144064.184000			
SIM focus pos (mm)	-0.782348	-0.7809083437167272			
SIM defocus (mm)	0	0.001439871863259334			
SIM translation stage pos (mm)	-233.592463	-233.5874344608287			
SIM translation stage offset (mm)	0	-0.005018542100998502			
Observation start time	123942439.184000	123941378.25761			
Observation start date	2001-12-05T12:26:15	2001-12-05T12:09:38			
Observation end time	123950239.184000	123950373.14547			
Observation end date	2001-12-05T14:36:15	2001-12-05T14:39:33			
Read mode	TIMED	TIMED			

2.3 Aspect



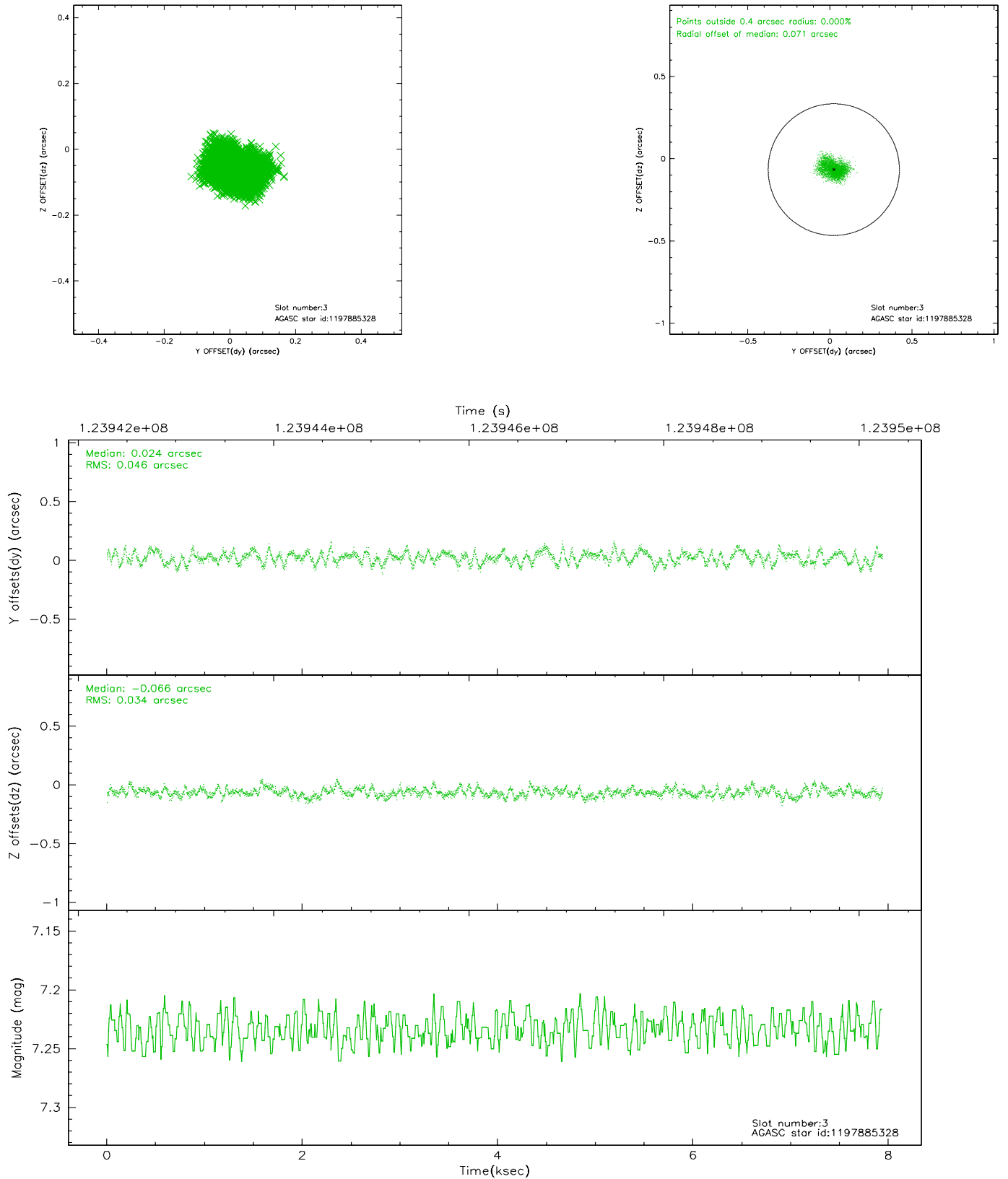


Slot Statistics

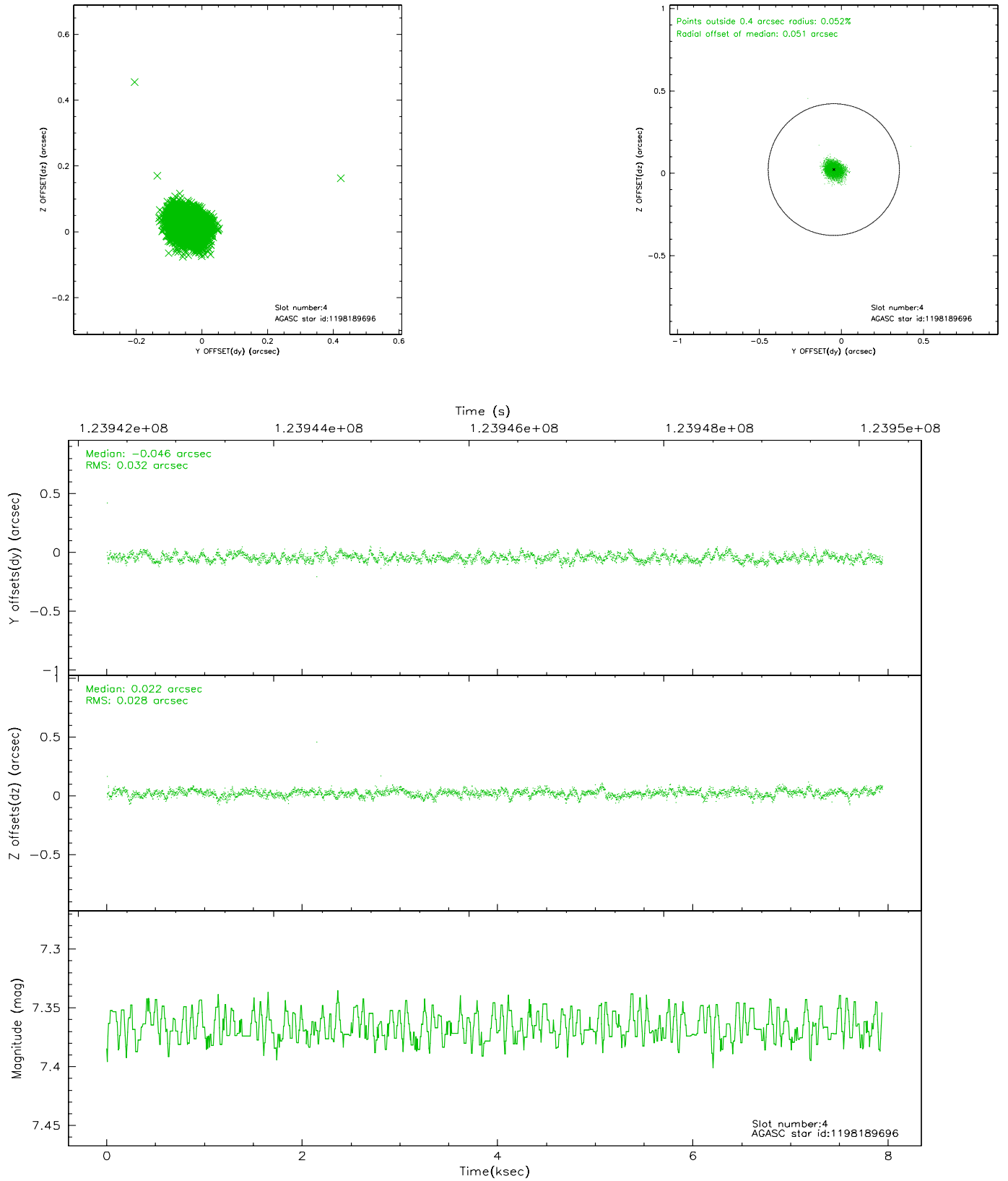
slot	status	id	mag	n_pts	med_dy	med_dz	dr1	dr2	ra	dec	mean_y	mean_z
0	FID	ACIS-I-1	7.24	1937	-0.048	0.037	0.005	0.010	0.000000	0.000000	936.63	-831.55
1	FID	ACIS-I-5	7.24	1936	-0.013	0.013	0.005	0.010	0.000000	0.000000	-1811.05	1065.55
2	OMITTED		0.00	0	0.000	0.000	0.000	0.000	0.000000	0.000000	0.00	0.00
3	GUIDE	1197885328	7.23	3874	0.024	-0.066	0.062	0.097	16.283090	-71.733943	-998.15	995.15
4	GUIDE	1198189696	7.37	3873	-0.046	0.022	0.044	0.071	15.223750	-72.697522	1004.41	-2067.00
5	GUIDE	1197750936	7.56	3873	0.027	-0.070	0.051	0.085	15.387940	-71.549550	-2148.05	609.89
6	GUIDE	1198283128	8.01	3873	-0.077	0.073	0.055	0.087	17.272580	-72.642428	2223.63	-228.96
7	GUIDE	1197878768	9.63	3870	0.062	0.038	0.122	0.202	16.656786	-71.304581	-1932.06	2298.19

2.4 Star Slots

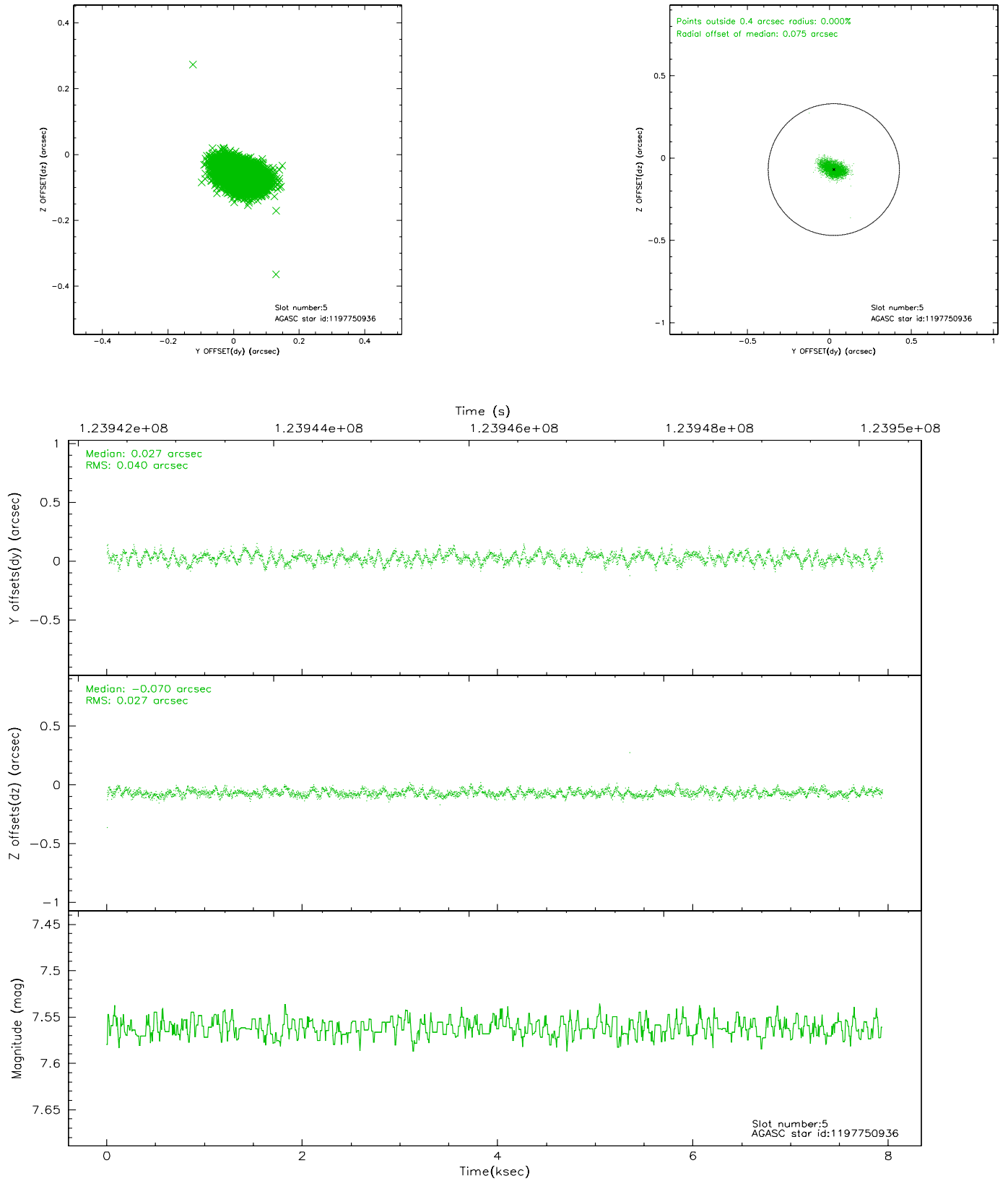
2.4.1 Slot 3



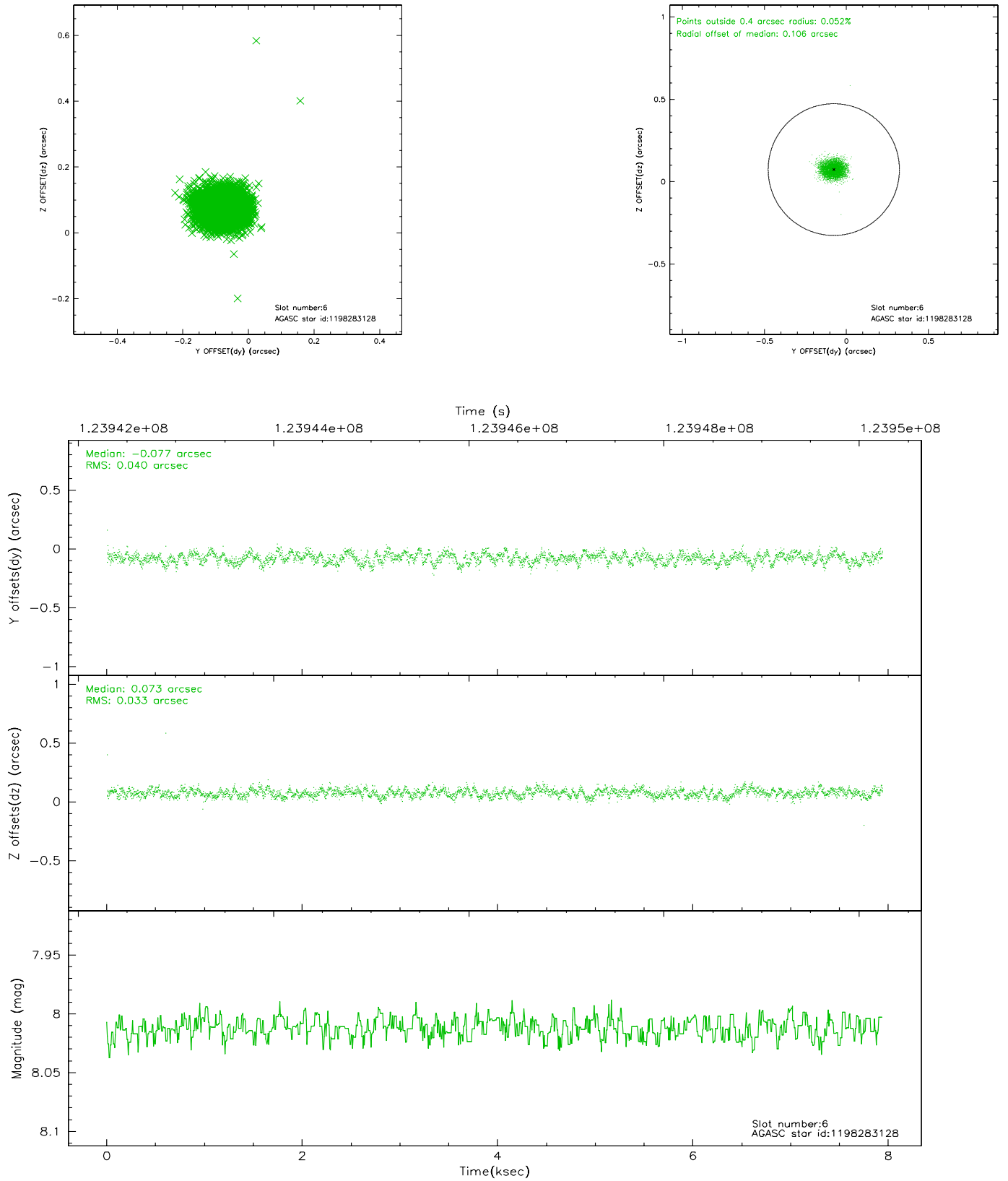
2.4.2 Slot 4



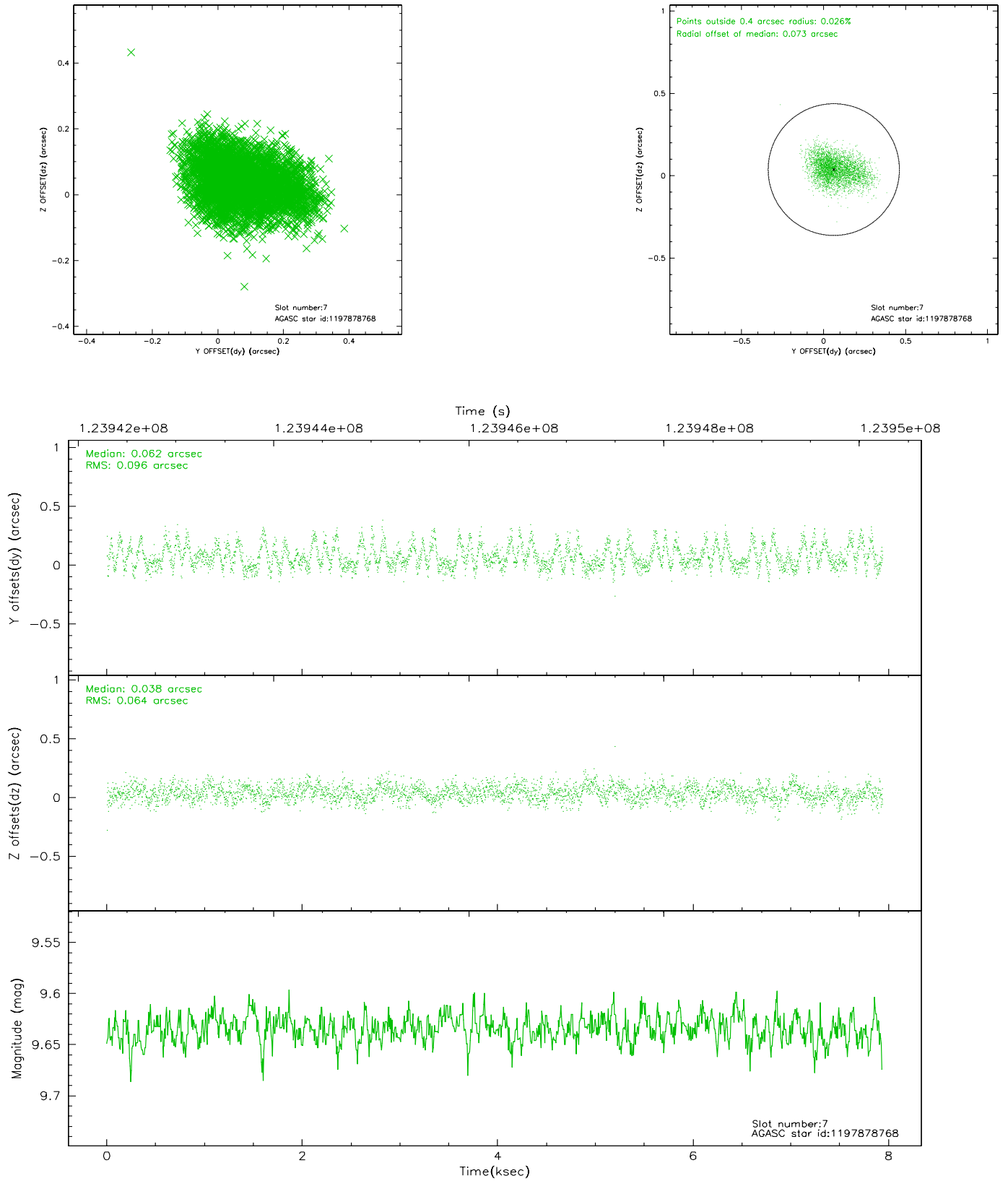
2.4.3 Slot 5



2.4.4 Slot 6

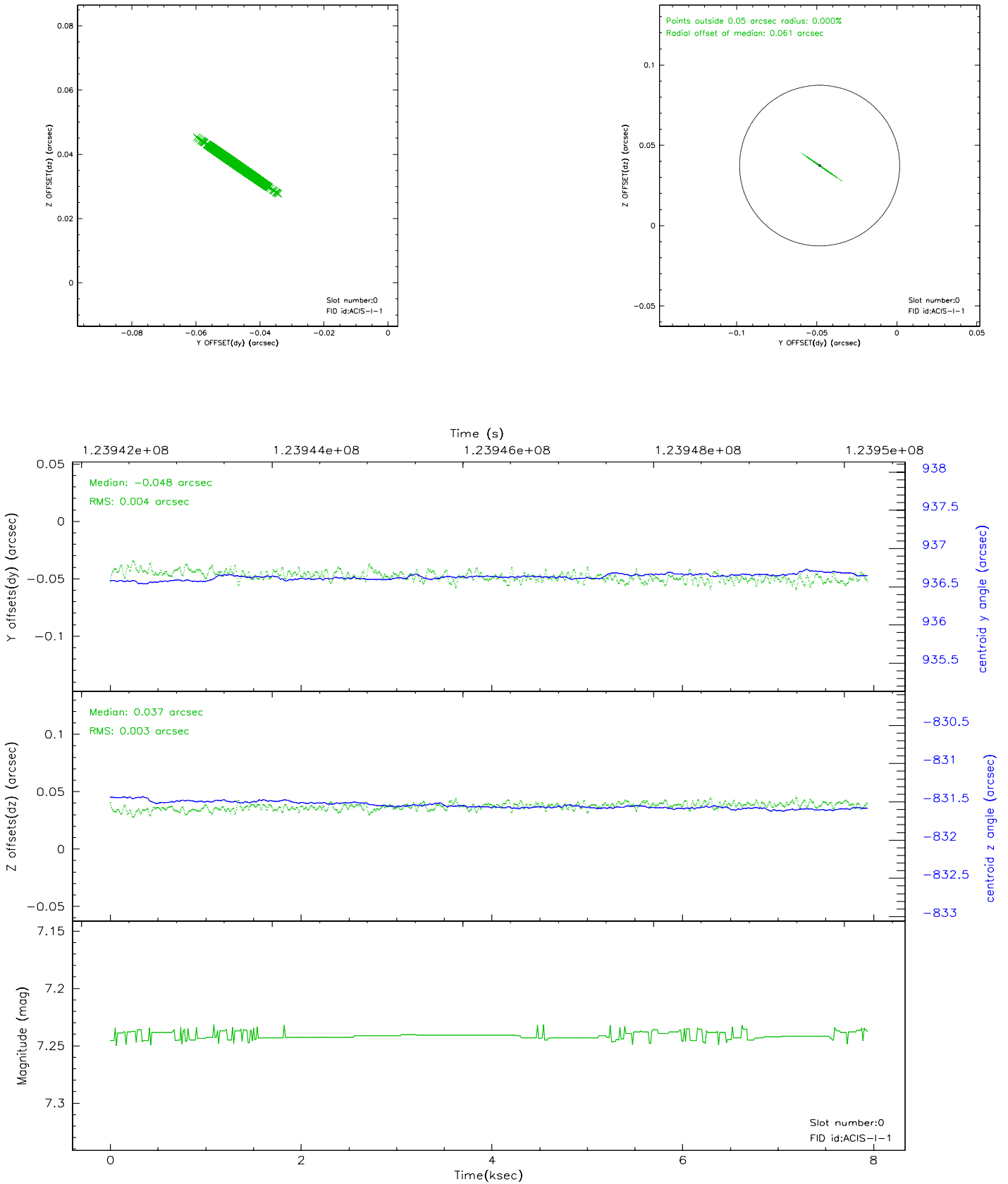


2.4.5 Slot 7

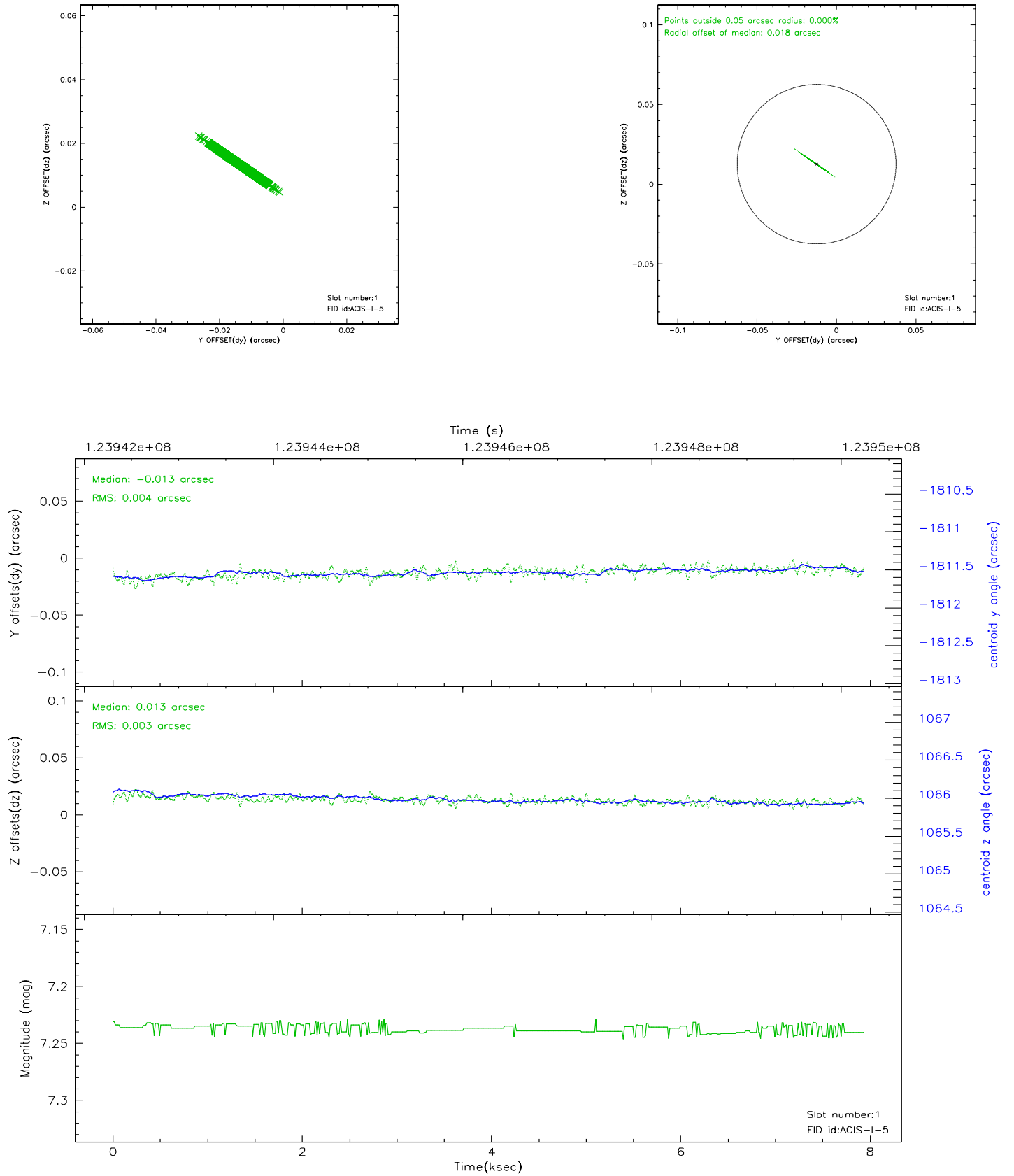


2.5 FID Slots

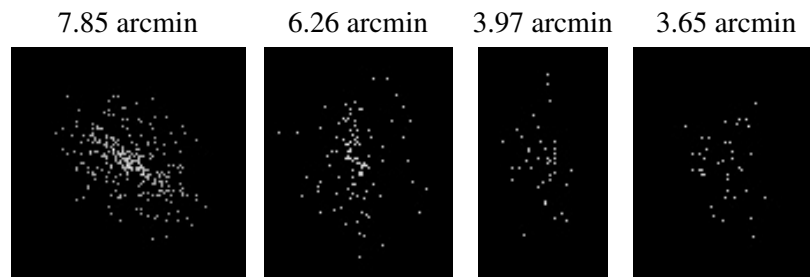
2.5.1 Slot 0



2.5.2 Slot 1



3 Point Sources



A Summary

A.1 Status

V&V Scientist	Jen Lauer
V&V Date (YYYY-MM-DD)	2010.10.01
V&V Edition	2
V&V Disposition and Status	OK
V&V Charge Time	7.932

A.2 Comments

Monitor constraint met. The target is near the edge of the chip.

=====

The fid light in slot 2 was manually excluded from the processing due to poor data quality.