

# V&V Reference Report

## L2 ASCDS Version : 8.4.5

Observation 1552 - L2 Version 3  
Chandra X-Ray Center

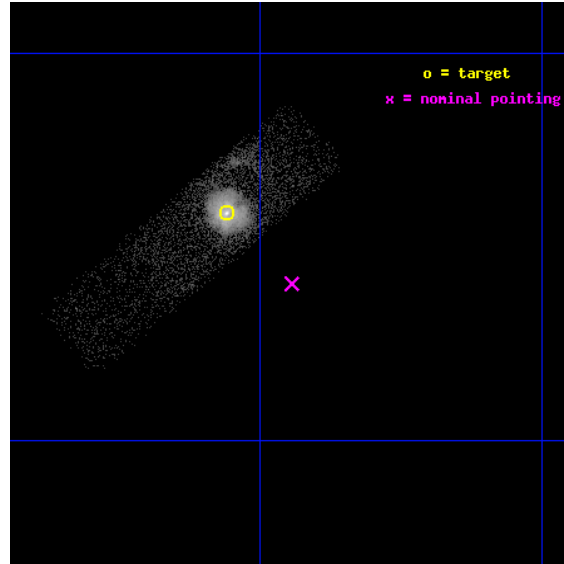
L2 Processing Date : Sep 20 2012

## Contents

<b>1</b>	<b>Front</b>	<b>2</b>
<b>2</b>	<b>OBI</b>	<b>3</b>
2.1	OBI . . . . .	3
2.1.1	Images . . . . .	3
2.1.2	Bias . . . . .	3
2.1.3	Parameters . . . . .	4
2.1.4	Events . . . . .	4
2.2	Compared Parameters . . . . .	5
2.3	Aspect . . . . .	6
2.4	Star Slots . . . . .	9
2.4.1	Slot 3 . . . . .	9
2.4.2	Slot 4 . . . . .	10
2.4.3	Slot 5 . . . . .	11
2.4.4	Slot 6 . . . . .	12
2.4.5	Slot 7 . . . . .	13
2.5	FID Slots . . . . .	14
2.5.1	Slot 0 . . . . .	14
2.5.2	Slot 1 . . . . .	15
2.5.3	Slot 2 . . . . .	16
<b>A</b>	<b>Summary</b>	<b>17</b>
A.1	Status . . . . .	17
A.2	Comments . . . . .	17

# 1 Front

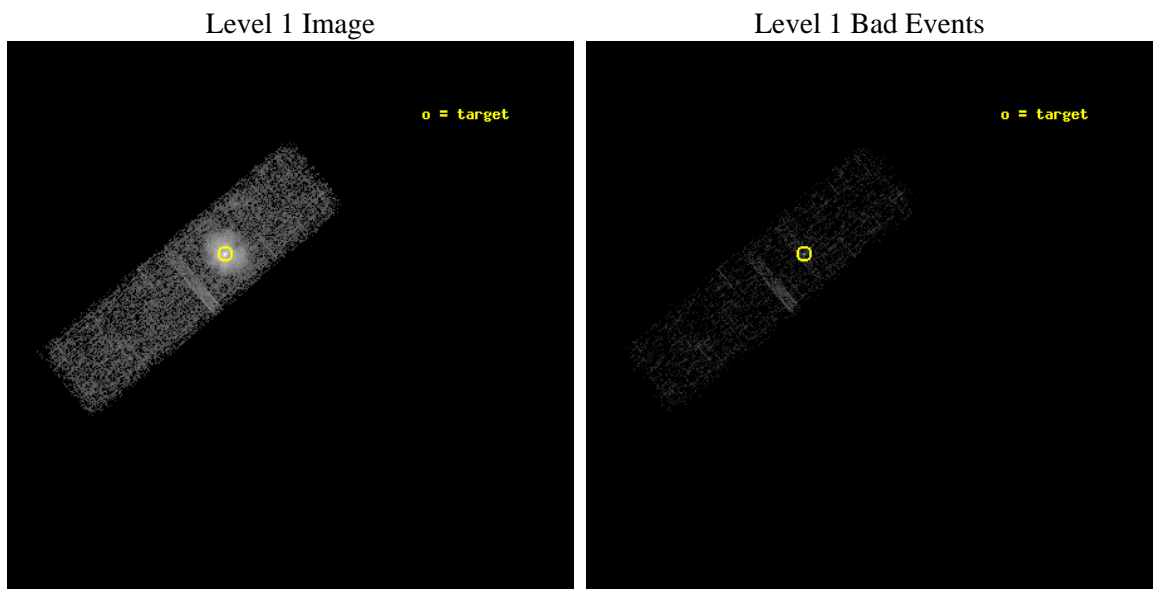
seq_num	590161	Sequence number
obs_id	1552	Observation id
title	CALIBRATION OBSERVATIONS OF THE STANDARD CANDLE G21.5-09	Proposal
observer	Dr. CXC Calibration	Principal investigator
object	G21.5-0.9[Chip I3, T=120, Offsets=-2.25,0,3.5]	Source name
dtcycle	0	&#160
cycle	P	events from which exps? Prim/Second/Both
ra_targ	278.389583	Observer's specified target RA [deg]
dec_targ	-10.568528	Observer's specified target Dec [deg]
ra_nom	278.36088505369	Nominal RA [deg]
dec_nom	-10.599435565587	Nominal Dec [deg]
roll_nom	230.28604055075	Nominal Roll [deg]
revision	3	Processing version of data
ontime	10440.758951023	Sum of GTIs [s]
livetime	9931.2840778306	Livetime [s]
ontime3	10440.758951023	Sum of GTIs [s]
l2events	29822	Number of level 2 events



## 2 OBI

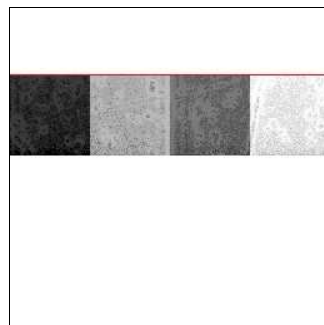
### 2.1 OBI

#### 2.1.1 Images



#### 2.1.2 Bias

Chip 3



### 2.1.3 Parameters

obi_num	0	Obi number	sched_exp_time	10000.000000	[s] Scheduled observation exposure time
ascdsver	8.4.5	Processing system revision	ontime	10440.758951023	Sum of GTIs [s]
caldsver	4.5.1.1	&#160	ontime3	10440.758951023	Sum of GTIs [s]
date	2012-09-20T05:11:05	Date and time of file creation	l1events	55069	Number of level 1 events
revision	3	Processing version of data			

### 2.1.4 Events

	<b>ccd 3</b>
level 1 events	55069
rejected events	23003
rejected %	41%

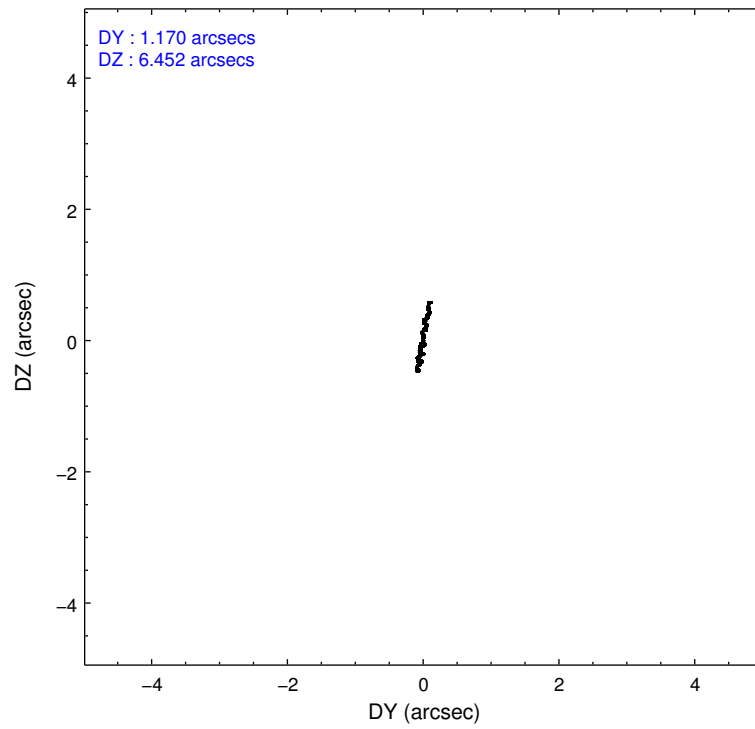
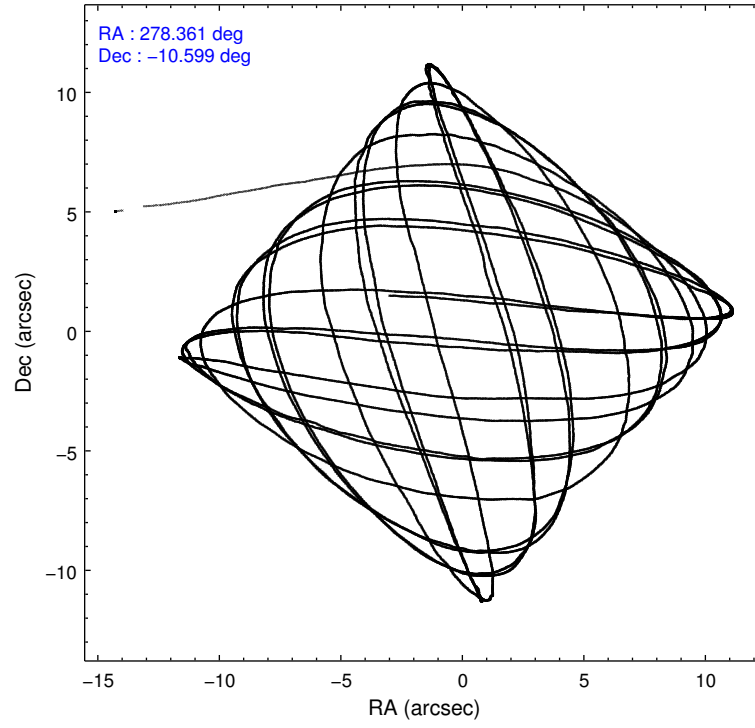
	<b>ccd 3</b>
grade 0 events	23385
	42%
grade 1 events	92
	0%
grade 2 events	4175
	7%
grade 3 events	1669
	3%
grade 4 events	1618
	2%
grade 5 events	803
	1%
grade 6 events	1740
	3%
grade 7 events	21587
	39%

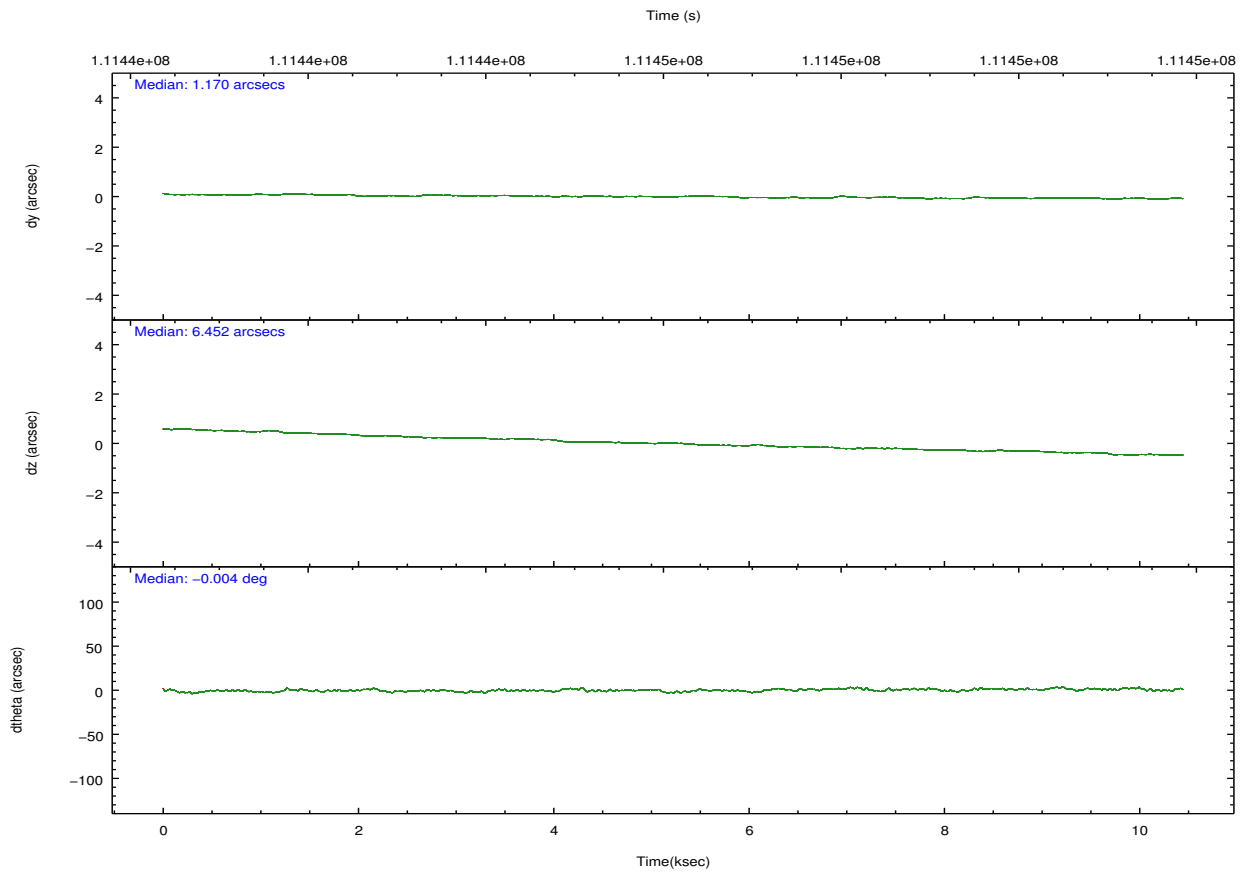
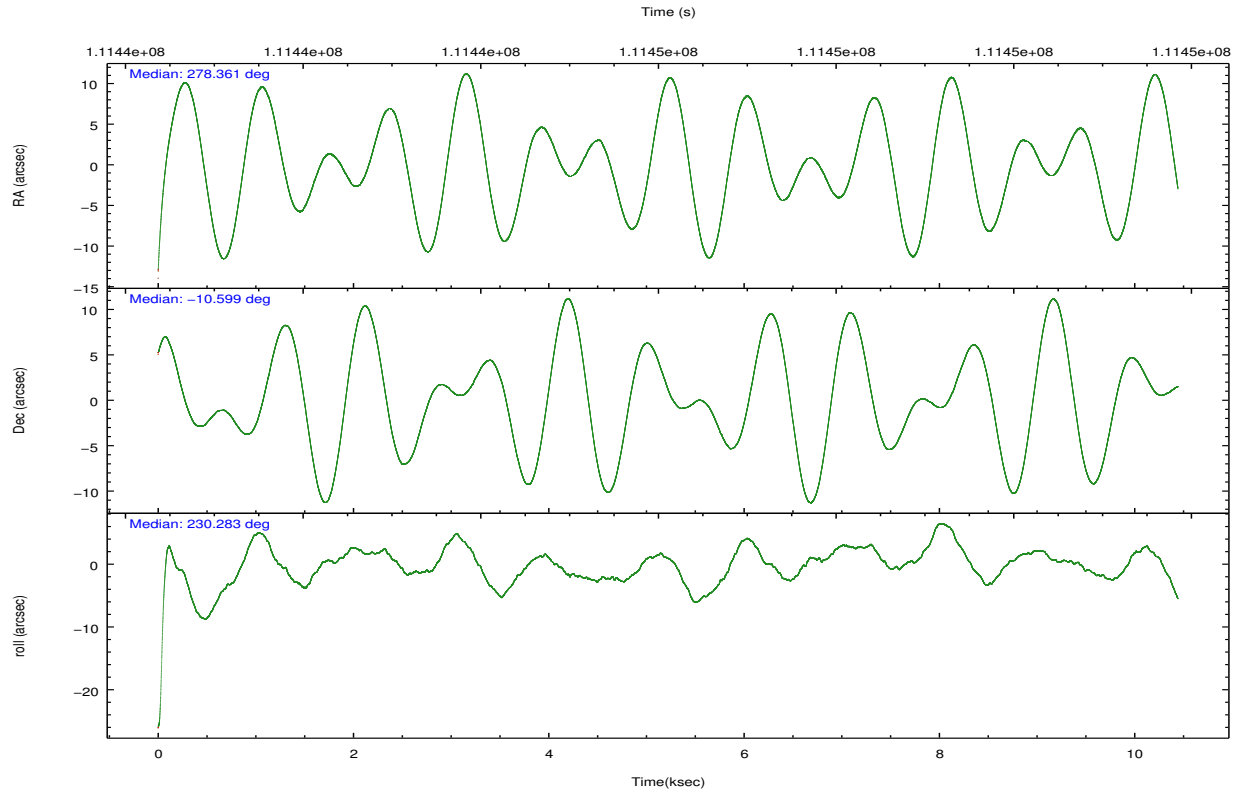


## 2.2 Compared Parameters

Parameter	Planned	Actual	Parameter	Planned	Actual
Instrument	ACIS	ACIS	Obspar format version number	7	7
Detector	ACIS-3	ACIS-3	Obspar file type	PREDICTED	ACTUAL
Grating	NONE	NONE	Obspar update status	NONE	UPDATED
Data mode	VFAINT	VFAINT	Number of optional ACIS chips dropped	0	0
Observation mode	POINTING	POINTING	On-chip summing requested	N	N
[deg] Pointing RA	278.365499	278.3608850536937	Subarray requested	CUSTOM	1/4
[deg] Pointing Dec	-10.572413	-10.599435565587	Subarray start row	555	555
[deg] Pointing Roll	230.078227	230.2860405507527	Subarray row count	256	256
[s] Window start time (MET)	110332864.184000	110332864.184000	Alternating exposures requested	N	N
[s] Window stop time (MET)	112838464.184000	112838464.184000	[s] Primary exposure time	0.000000	0.8
[mm] SIM focus pos	-0.782348	-0.7809083437167272			
[mm] SIM defocus	0	0.001439871863259334			
[mm] SIM translation stage pos	-226.272463	-226.2682626179875			
[mm] SIM translation stage offset	-7.32	-7.32419038494217			
[s] Observation start time (MET)	111441331.184000	111440247.13747			
Observation start date	2001-07-13T19:54:27	2001-07-13T19:37:27			
[s] Observation end time (MET)	111451331.184000	111451527.77542			
Observation end date	2001-07-13T22:41:07	2001-07-13T22:45:27			
Read mode	TIMED	TIMED			

## 2.3 Aspect



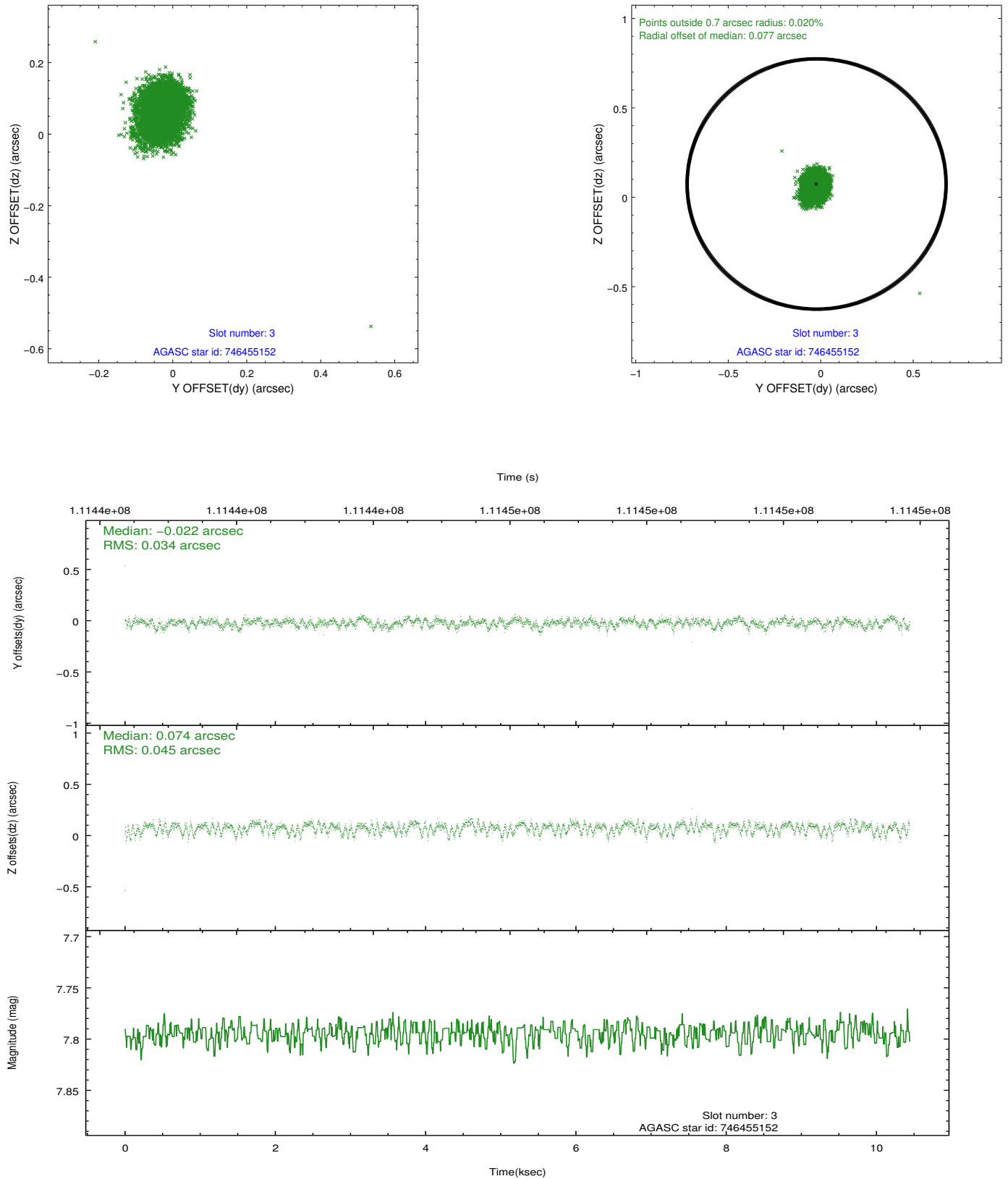


### Slot Statistics

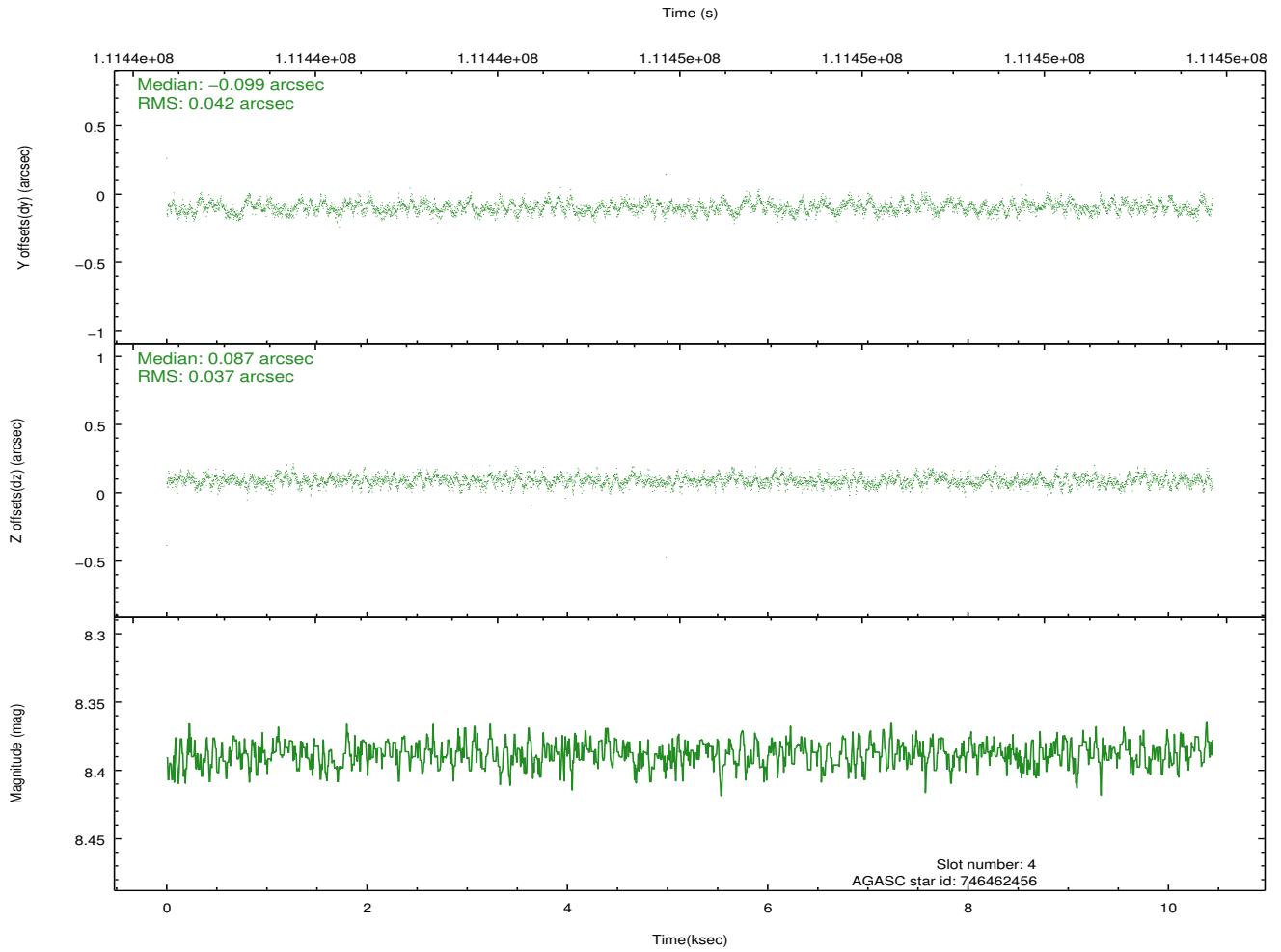
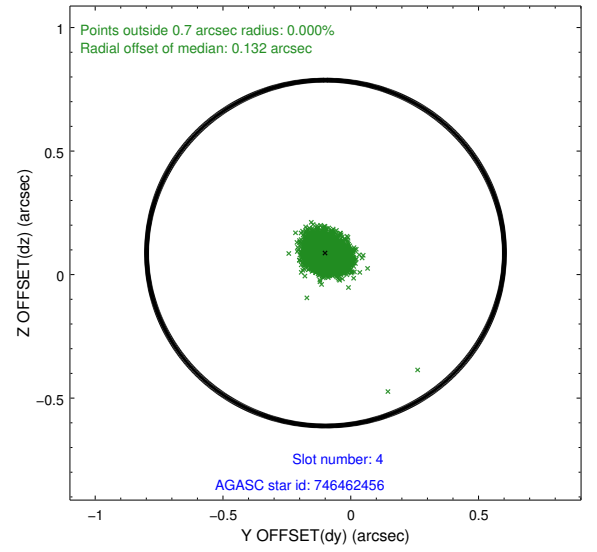
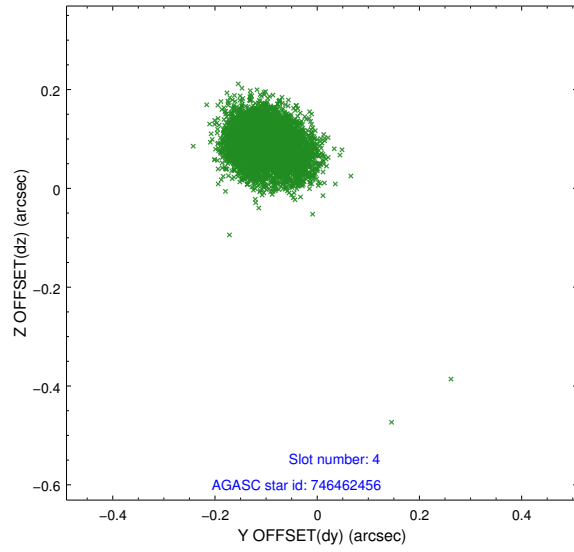
slot	status	id	mag	n_pts	med_dy	med_dz	dr1	dr2	ra	dec	mean_y	mean_z
0	FID	ACIS-I-2	7.17	2548	-0.043	-0.049	0.020	0.039	0.000000	0.000000	-756.04	-985.65
1	FID	ACIS-I-4	7.15	2547	-0.013	0.046	0.011	0.019	0.000000	0.000000	2157.75	920.32
2	FID	ACIS-I-5	7.21	2548	-0.044	0.072	0.021	0.035	0.000000	0.000000	-1808.88	917.75
3	GUIDE	746455152	7.79	5093	-0.022	0.074	0.057	0.096	278.447893	-9.976732	-1831.35	-1151.30
4	GUIDE	746462456	8.39	5094	-0.099	0.087	0.059	0.093	278.652171	-10.530173	-767.06	681.72
5	GUIDE	746455112	8.93	5094	0.267	-0.147	0.066	0.109	278.266531	-10.703234	586.63	34.71
6	GUIDE	746460272	8.91	5095	-0.037	-0.075	0.066	0.111	278.847488	-10.152127	-2254.71	340.47
7	GUIDE	746461728	9.77	5089	-0.109	0.066	0.117	0.195	278.986921	-10.530755	-1524.76	1592.91

## 2.4 Star Slots

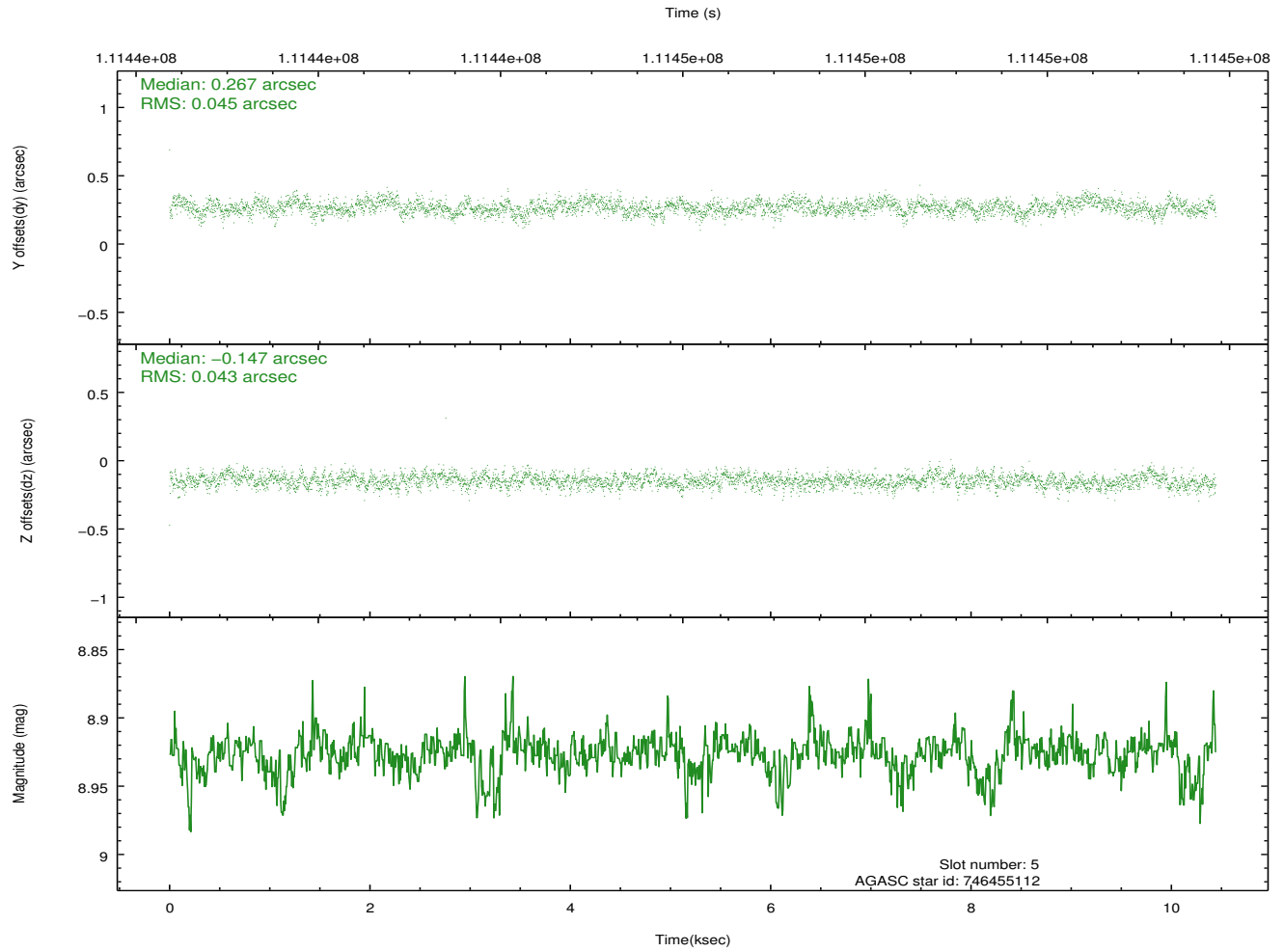
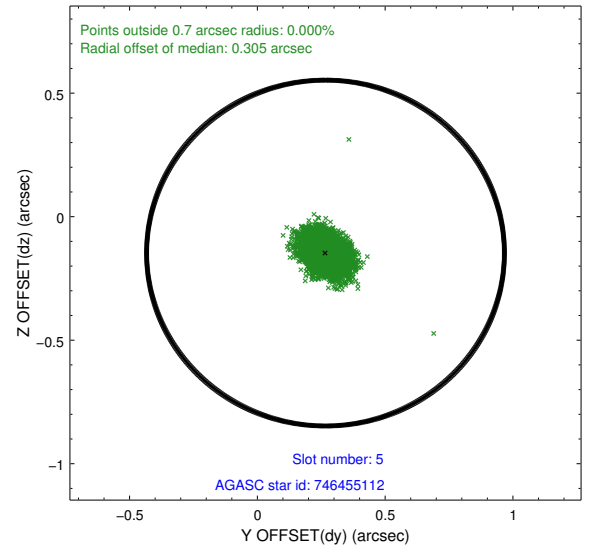
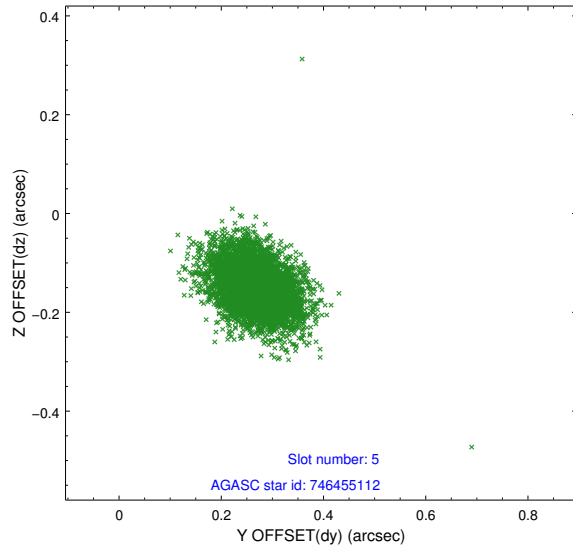
### 2.4.1 Slot 3



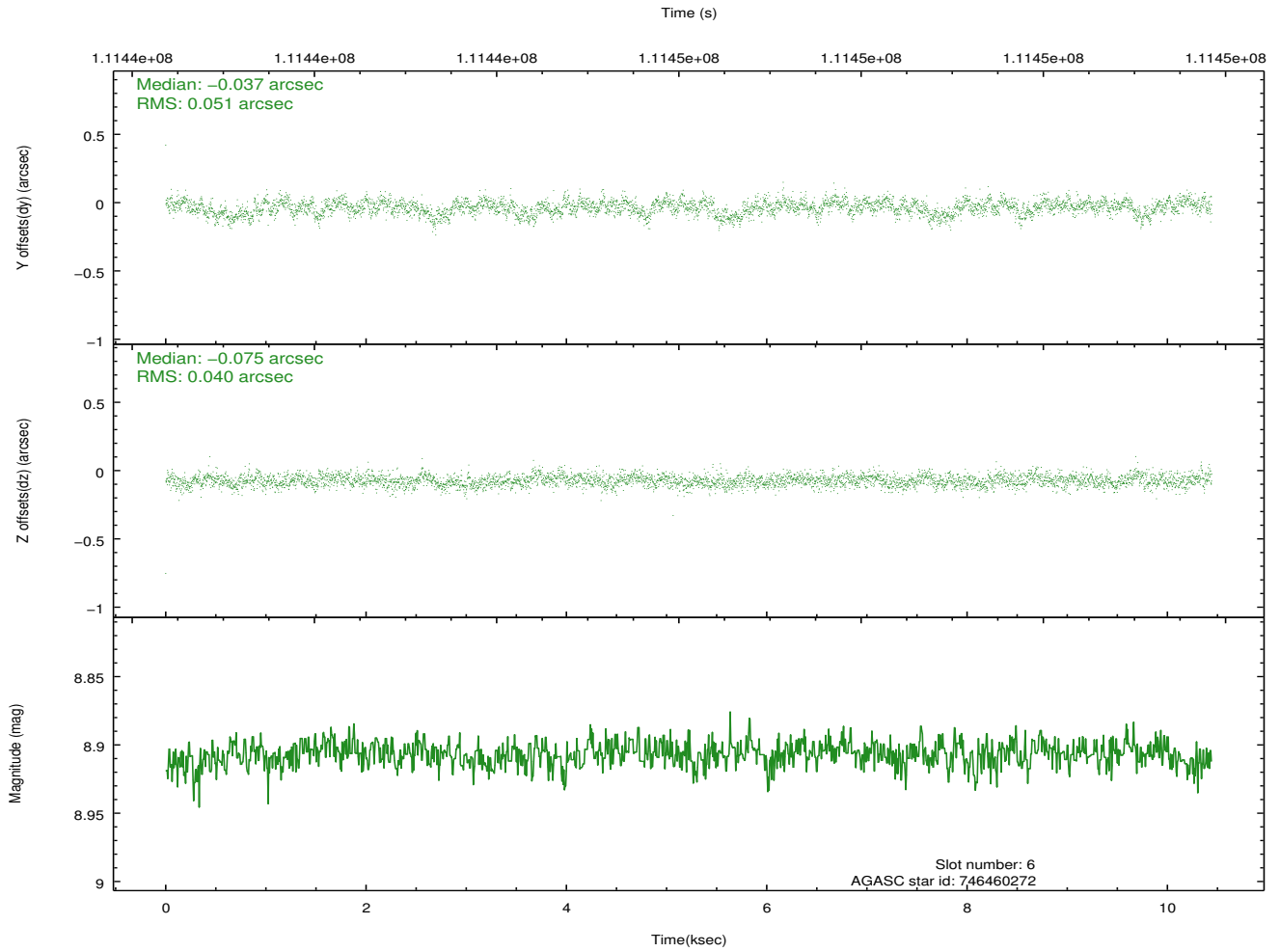
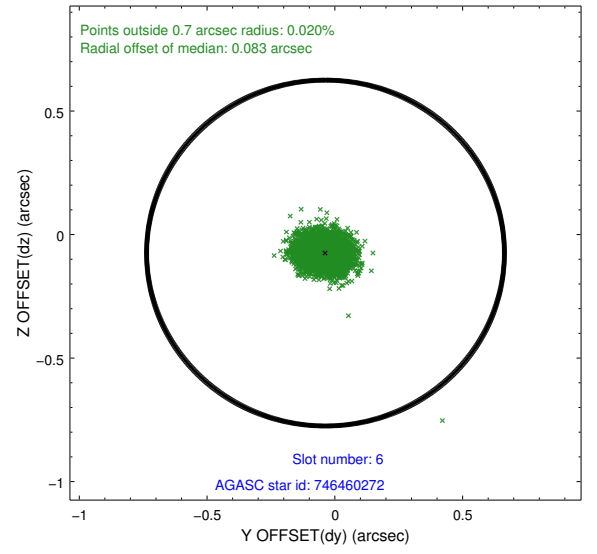
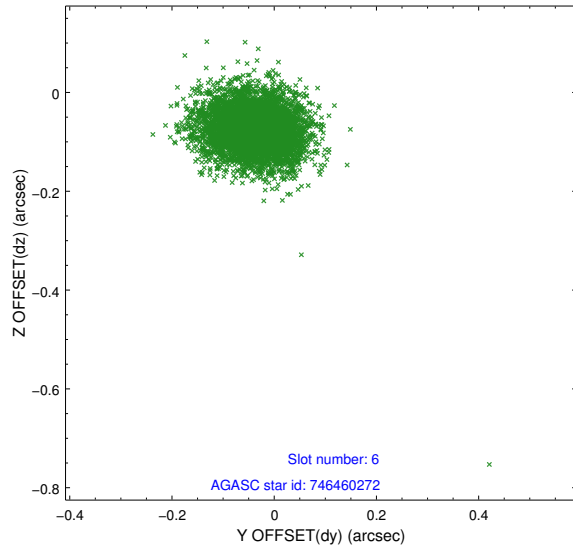
## 2.4.2 Slot 4



### 2.4.3 Slot 5

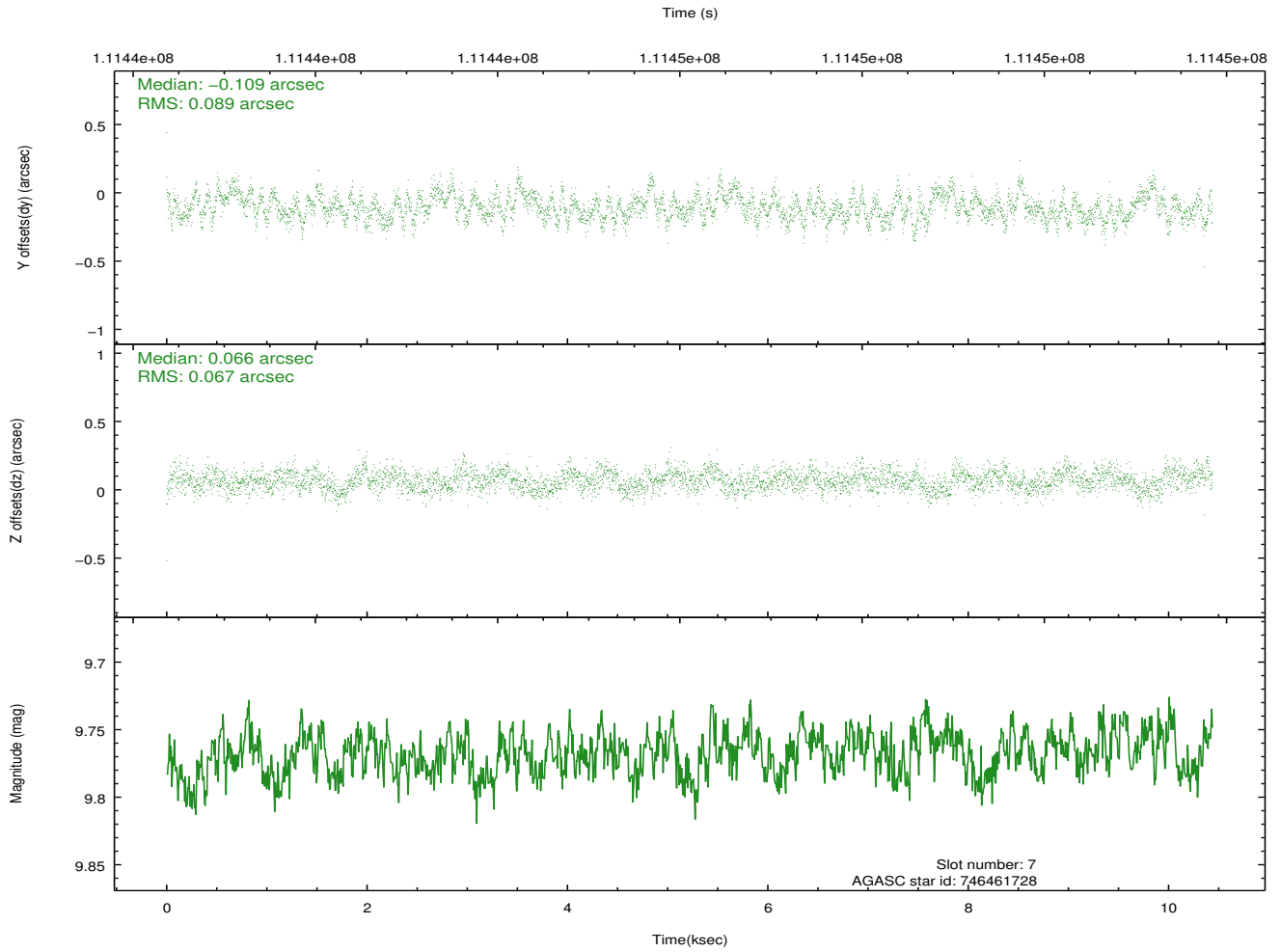
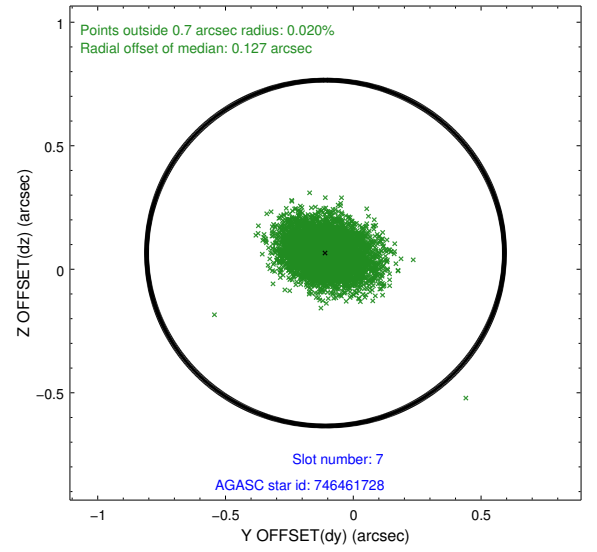
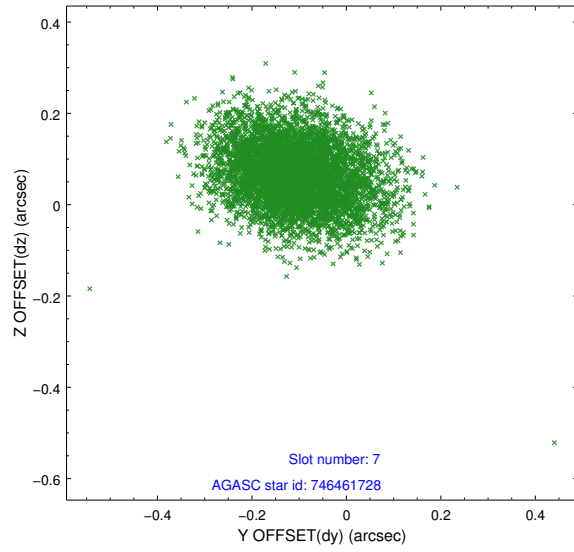


## 2.4.4 Slot 6



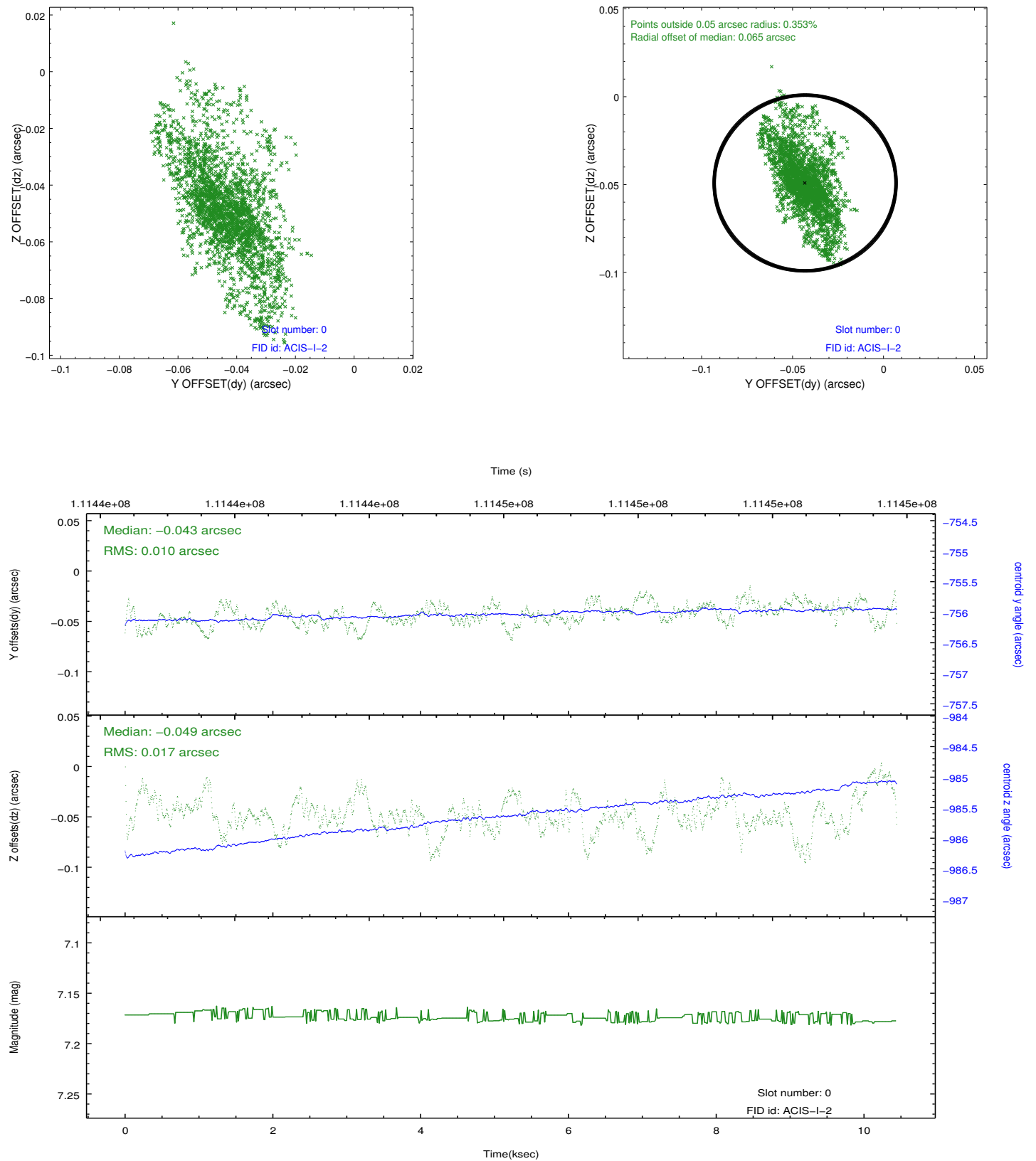


## 2.4.5 Slot 7

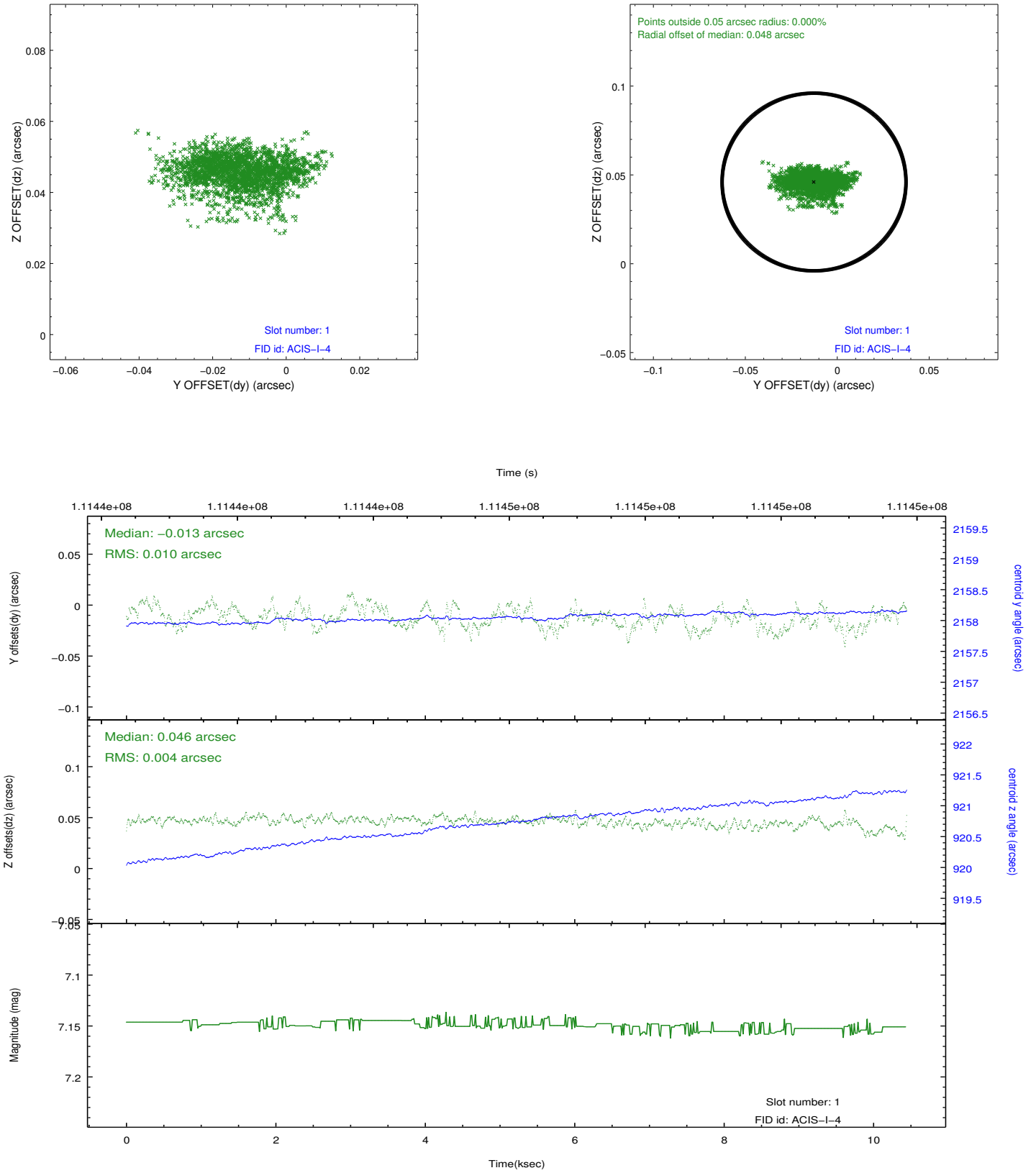


## 2.5 FID Slots

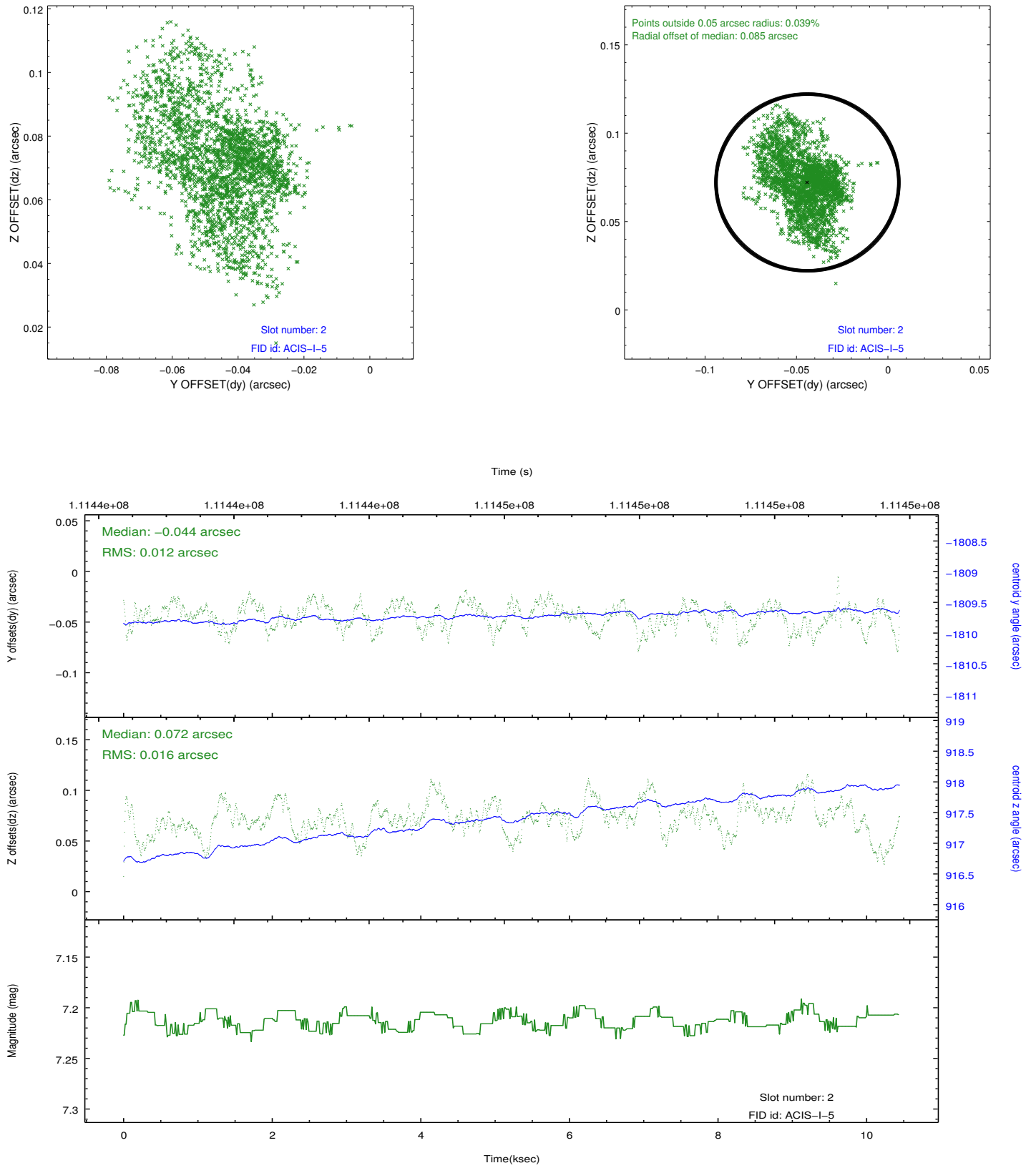
### 2.5.1 Slot 0



## 2.5.2 Slot 1



### 2.5.3 Slot 2



## A Summary

### A.1 Status

V&V Scientist	Jen Lauer
V&V Date (YYYY-MM-DD)	2012.09.21
V&V Edition	1
V&V Disposition and Status	OK
V&V Charge Time	10.44

### A.2 Comments

Window constraint met.