

# V&V Reference Report

## L2 ASCDS Version : 7.6.9

Observation 1549 - L2 Version 4  
Chandra X-Ray Center

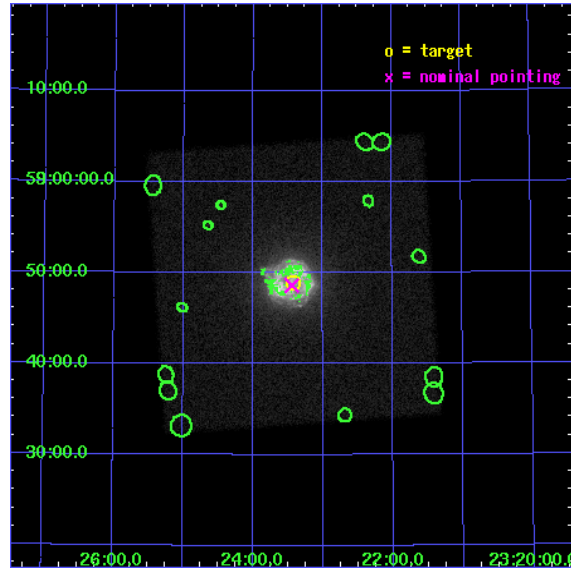
L2 Processing Date : Nov 21 2007

## Contents

<b>1</b>	<b>Front</b>	<b>2</b>
<b>2</b>	<b>OBI</b>	<b>3</b>
2.1	OBI . . . . .	3
2.1.1	Images . . . . .	3
2.1.2	Parameters . . . . .	4
2.1.3	Events . . . . .	4
2.2	Compared Parameters . . . . .	5
2.3	Aspect . . . . .	6
2.4	Star Slots . . . . .	9
2.4.1	Slot 3 . . . . .	9
2.4.2	Slot 4 . . . . .	10
2.4.3	Slot 5 . . . . .	11
2.4.4	Slot 6 . . . . .	12
2.4.5	Slot 7 . . . . .	13
2.5	FID Slots . . . . .	14
2.5.1	Slot 0 . . . . .	14
2.5.2	Slot 1 . . . . .	15
2.5.3	Slot 2 . . . . .	16
<b>3</b>	<b>Point Sources</b>	<b>17</b>
<b>A</b>	<b>Summary</b>	<b>18</b>
A.1	Status . . . . .	18
A.2	Comments . . . . .	18

# 1 Front

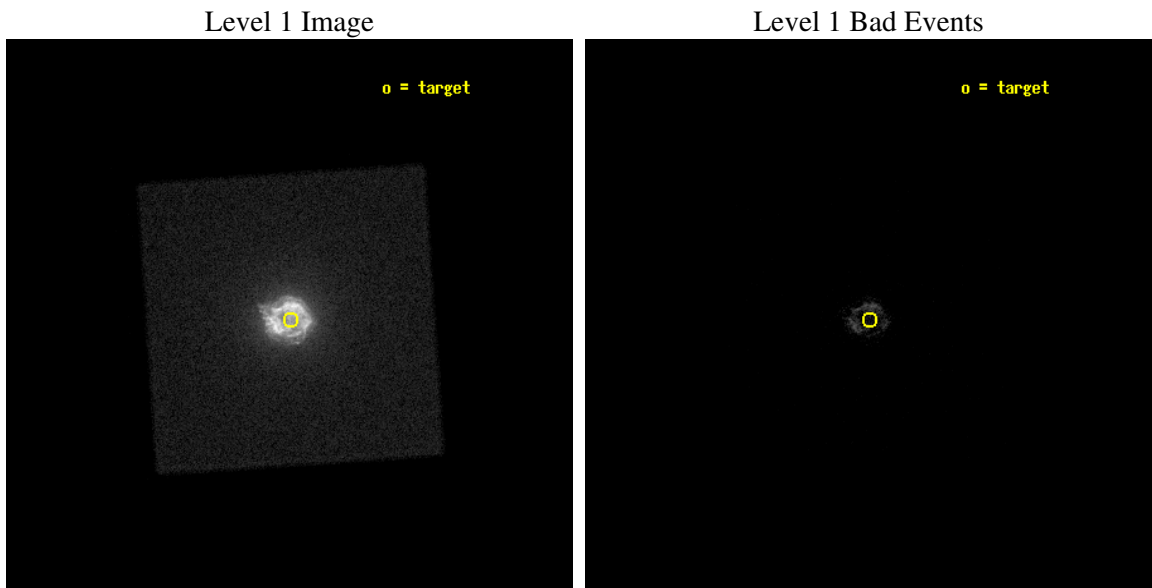
seq_num	590158
obs_id	1549
title	CALIBRATION OBSERVATIONS OF THE STANDARD CANDLE CAS A
observer	Dr. CXC Calibration
object	CAS A [HRC-I, Offsets=0,0,0 HRC-I, AO2A]
ra_targ	350.8575
dec_targ	58.814833
ra_nom	350.86059794349
dec_nom	58.810572833253
roll_nom	311.12762081892
revision	4
ontime	4983.8064413965
livetime	4926.8058036519
l2events	570247



## 2 OBI

### 2.1 OBI

#### 2.1.1 Images



### 2.1.2 Parameters

obi_num	0
ascdsver	7.6.11.2
caldbver	3.4.1
date	2007-11-21T07:49:39
revision	4

sched_exp_time	5000.000000
ontime	4983.8064413965
l1events	680978

### 2.1.3 Events

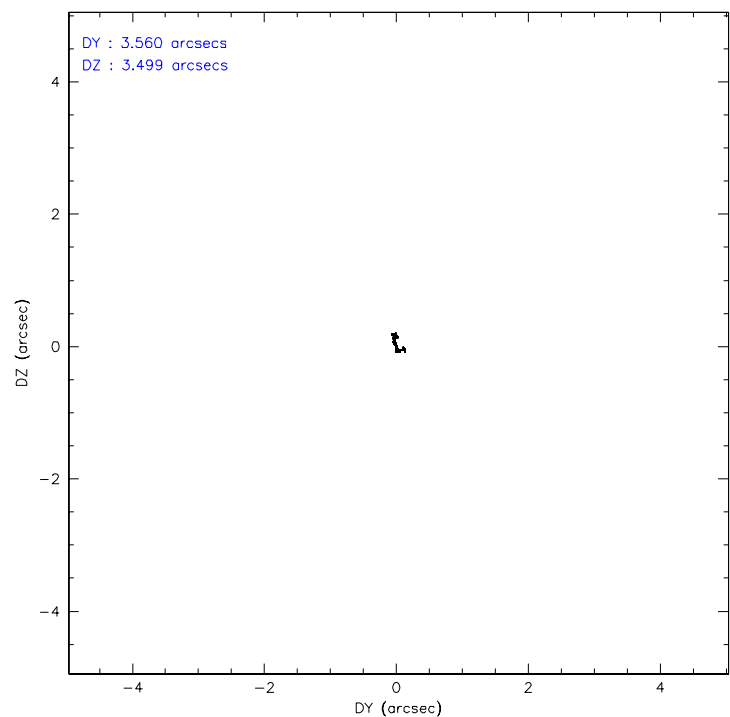
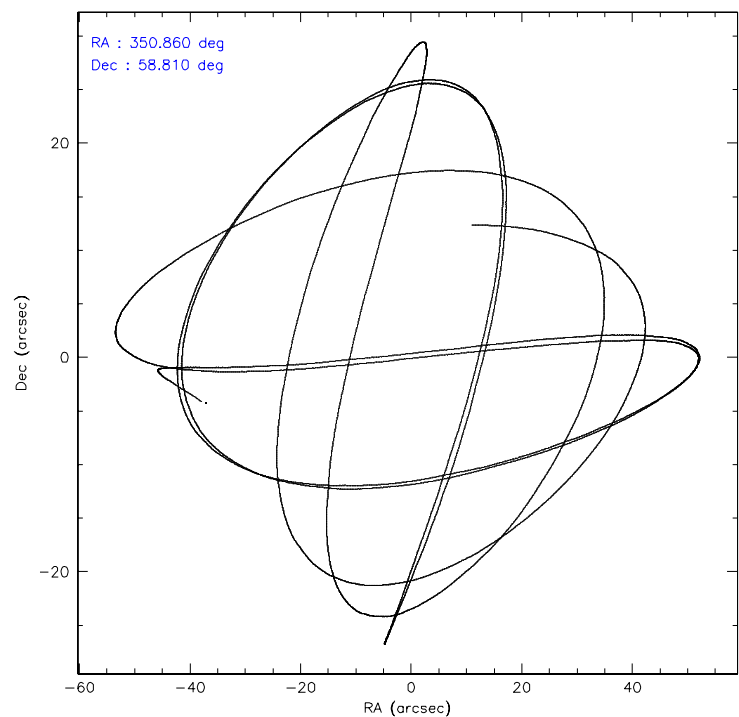
#### Level 1 Events

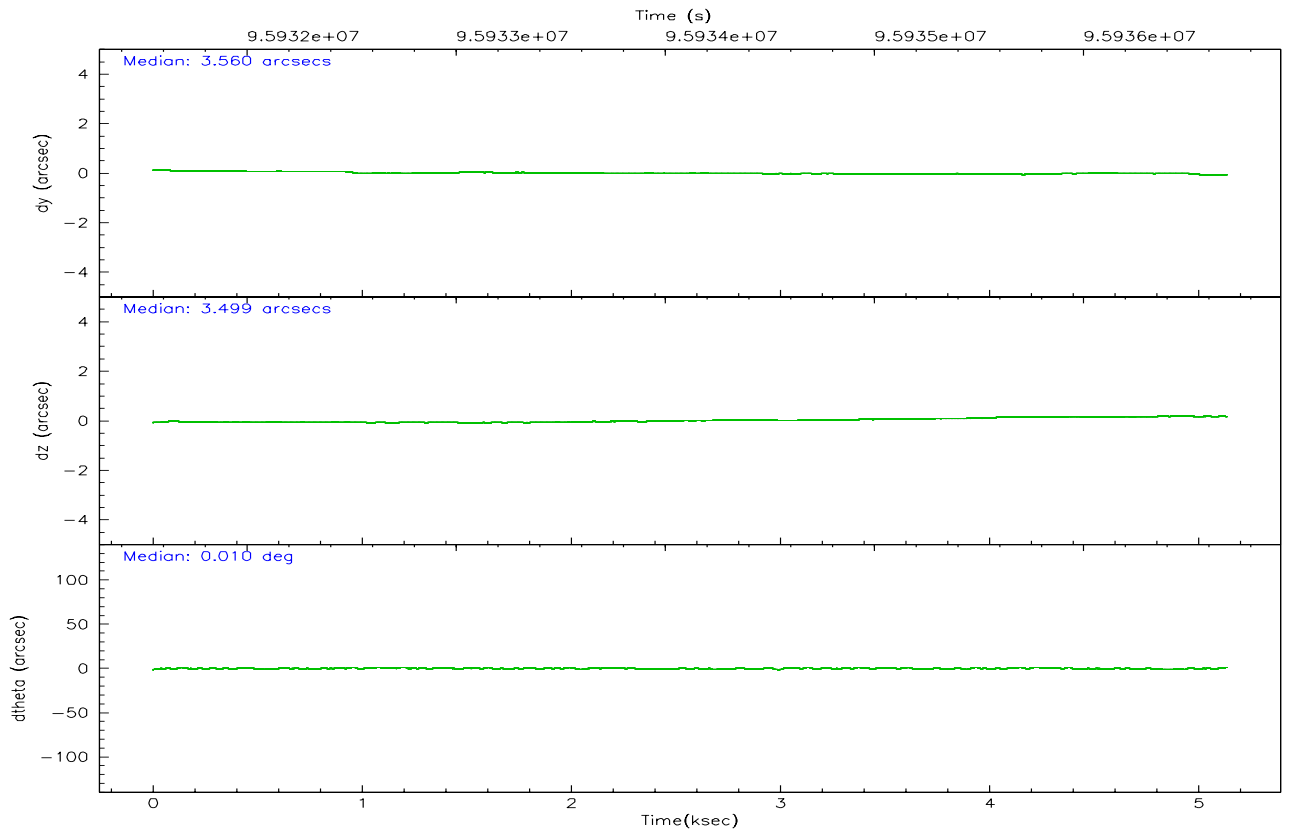
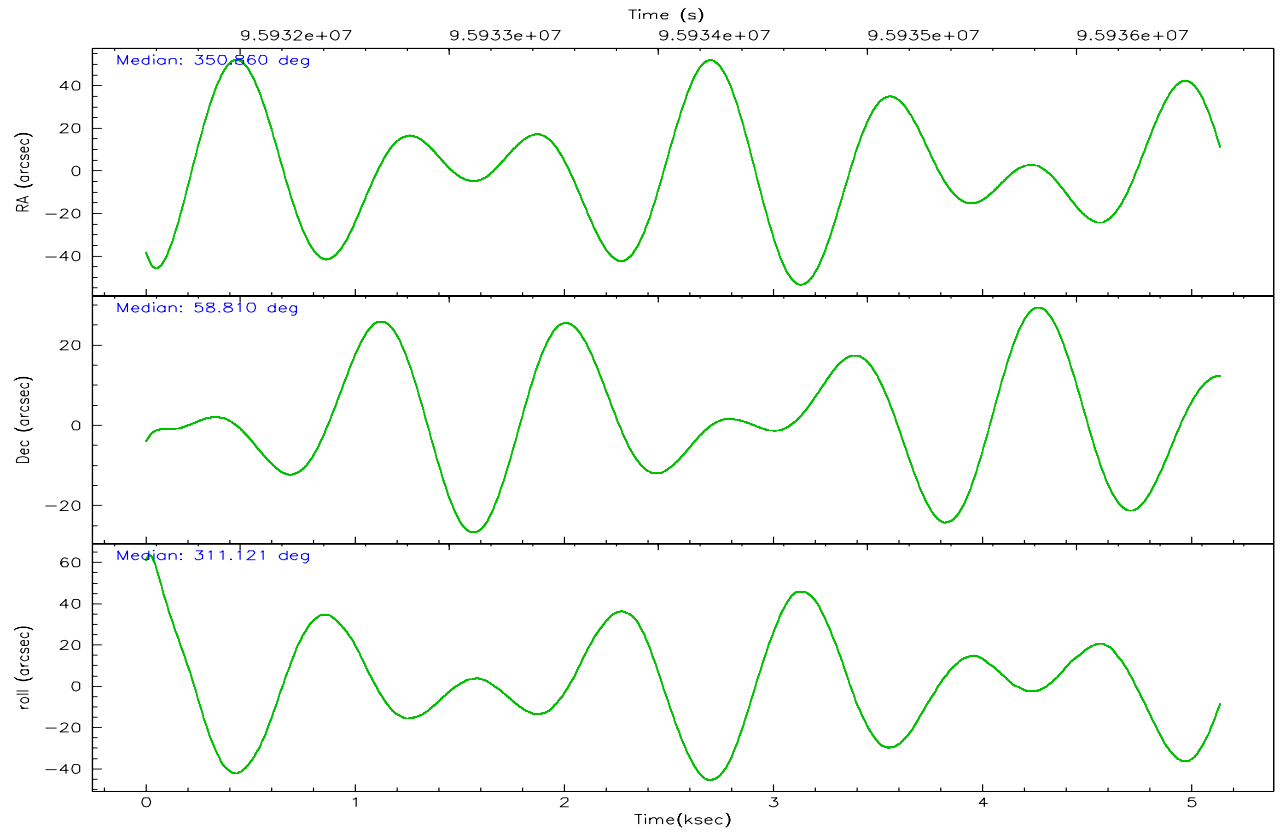
	<b>segment 0</b>
level 1 events	680978
rejected events	8653
rejected %	1%

## 2.2 Compared Parameters

Parameter	Planned	Actual	Parameter	Planned	Actual
Instrument	HRC	HRC	Obspar format version number	6	6
Detector	HRC-I	HRC-I	Obspar file type	PREDICTED	ACTUAL
Grating	NONE	NONE	Obspar update status	NONE	UPDATED
Data mode	OBSERVING	OBSERVING			
Observation mode	POINTING	POINTING			
Pointing RA	350.810129	350.8605979434883			
Pointing Dec	58.819037	58.81057283325276			
Pointing Roll	311.266228	311.1276208189161			
Window start time	94694464.184000	94694464.184000			
Window stop time	97286464.184000	97286464.184000			
SIM focus pos (mm)	-1.040293	-1.038866356238299			
SIM defocus (mm)	0	0.001426264420575141			
SIM translation stage pos (mm)	126.985494	126.9829799899862			
SIM translation stage offset (mm)	0	0.002508901615314585			
Observation start time	95931687.184000	95930804.46119399			
Observation start date	2001-01-15T07:40:23	2001-01-15T07:26:44			
Observation end time	95936687.184000	95936910.386429			
Observation end date	2001-01-15T09:03:43	2001-01-15T09:08:30			

## 2.3 Aspect





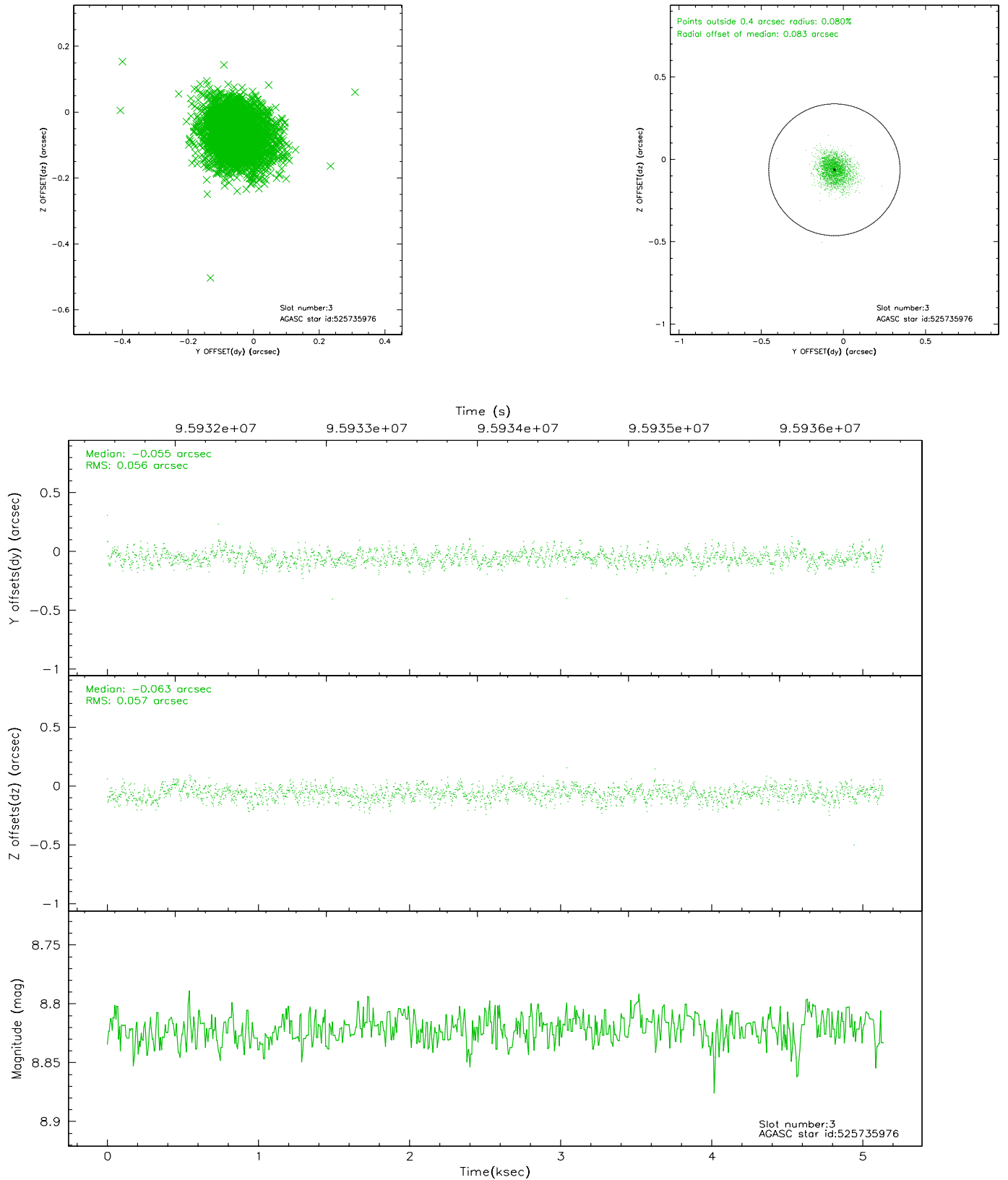
### Slot Statistics

slot	status	id	mag	n_pts	med_dy	med_dz	dr1	dr2	ra	dec	mean_y	mean_z
0	FID	HRC-I-1	6.98	1253	0.083	0.053	0.007	0.012	0.000000	0.000000	-759.02	-1291.20
1	FID	HRC-I-3	7.06	1254	0.000	-0.054	0.009	0.015	0.000000	0.000000	-1188.13	1012.24
2	FID	HRC-I-4	7.00	1253	0.030	-0.087	0.005	0.009	0.000000	0.000000	1282.84	1011.58
3	GUIDE	525735976	8.82	2504	-0.055	-0.063	0.083	0.136	350.142956	58.277622	627.75	-2230.26
4	GUIDE	525736400	9.07	2507	-0.031	0.062	0.083	0.133	350.974563	59.175145	-763.57	1073.26
5	GUIDE	525606576	9.47	2506	-0.070	-0.111	0.108	0.173	349.543555	58.678895	-1200.85	-2099.00
6	GUIDE	525739240	9.63	2506	0.013	-0.090	0.099	0.160	350.642893	59.099564	-963.64	433.34
7	GUIDE	525740136	8.66	2506	0.142	0.198	0.062	0.099	352.585881	58.767876	2291.12	2399.80

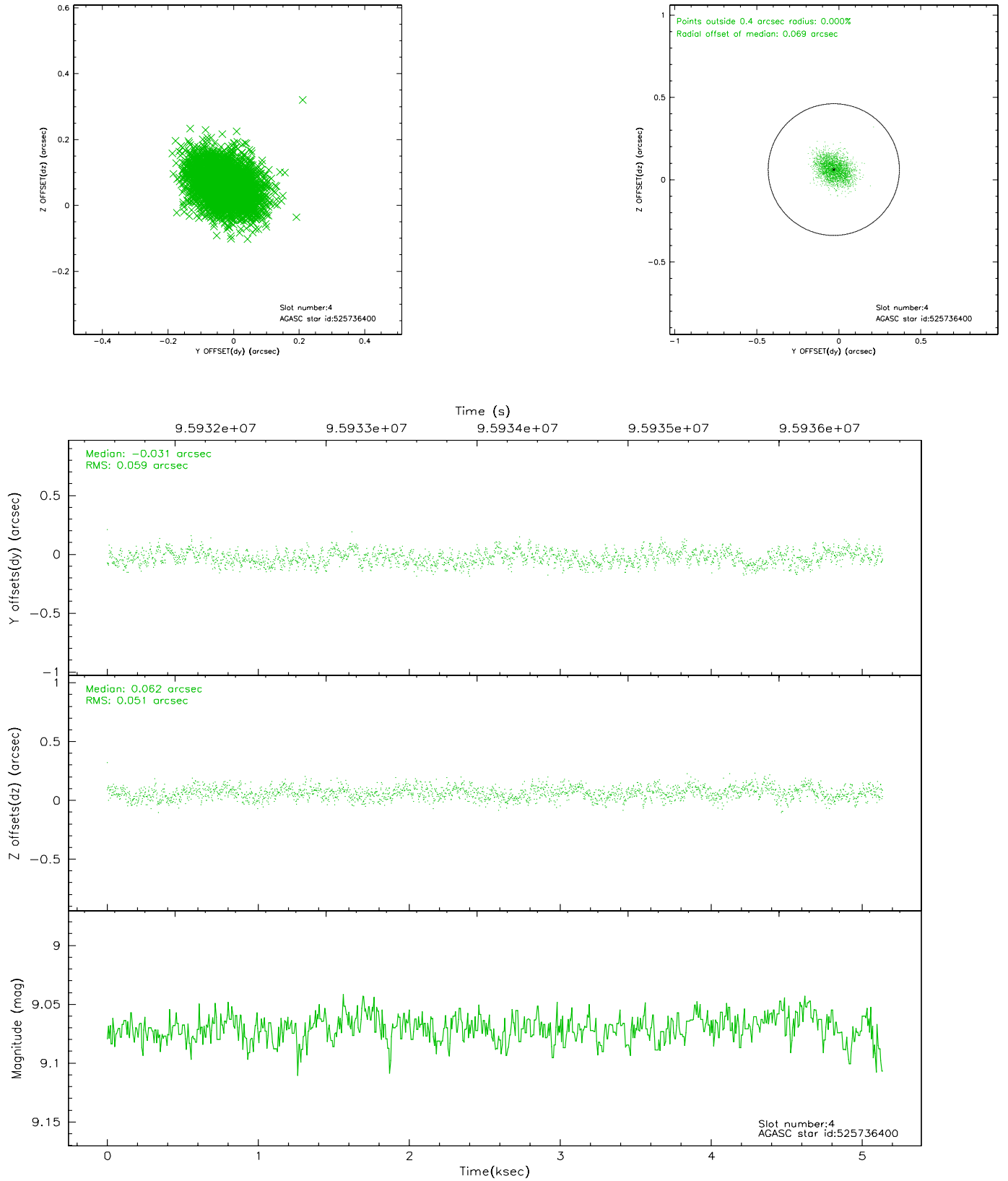


## 2.4 Star Slots

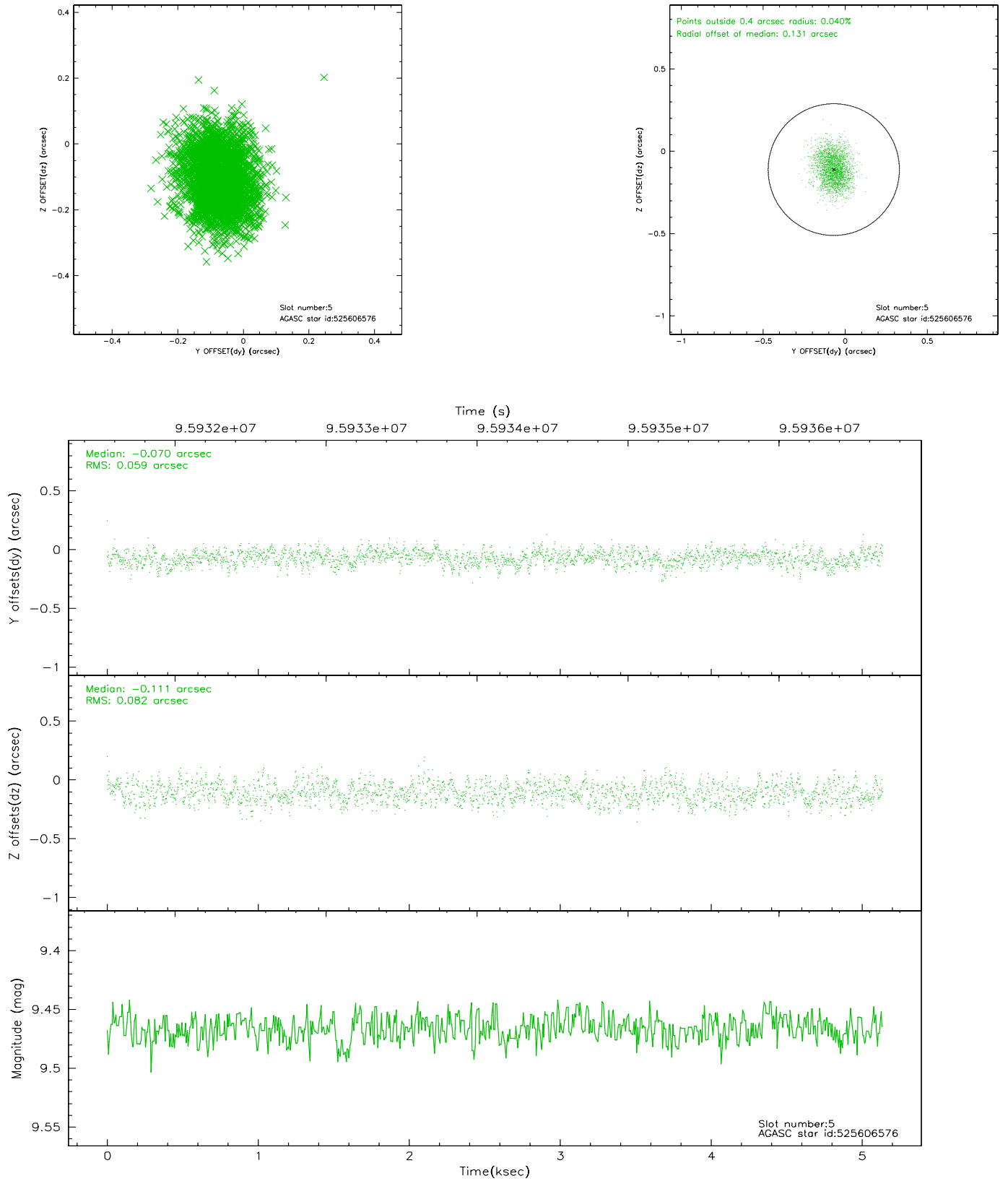
### 2.4.1 Slot 3



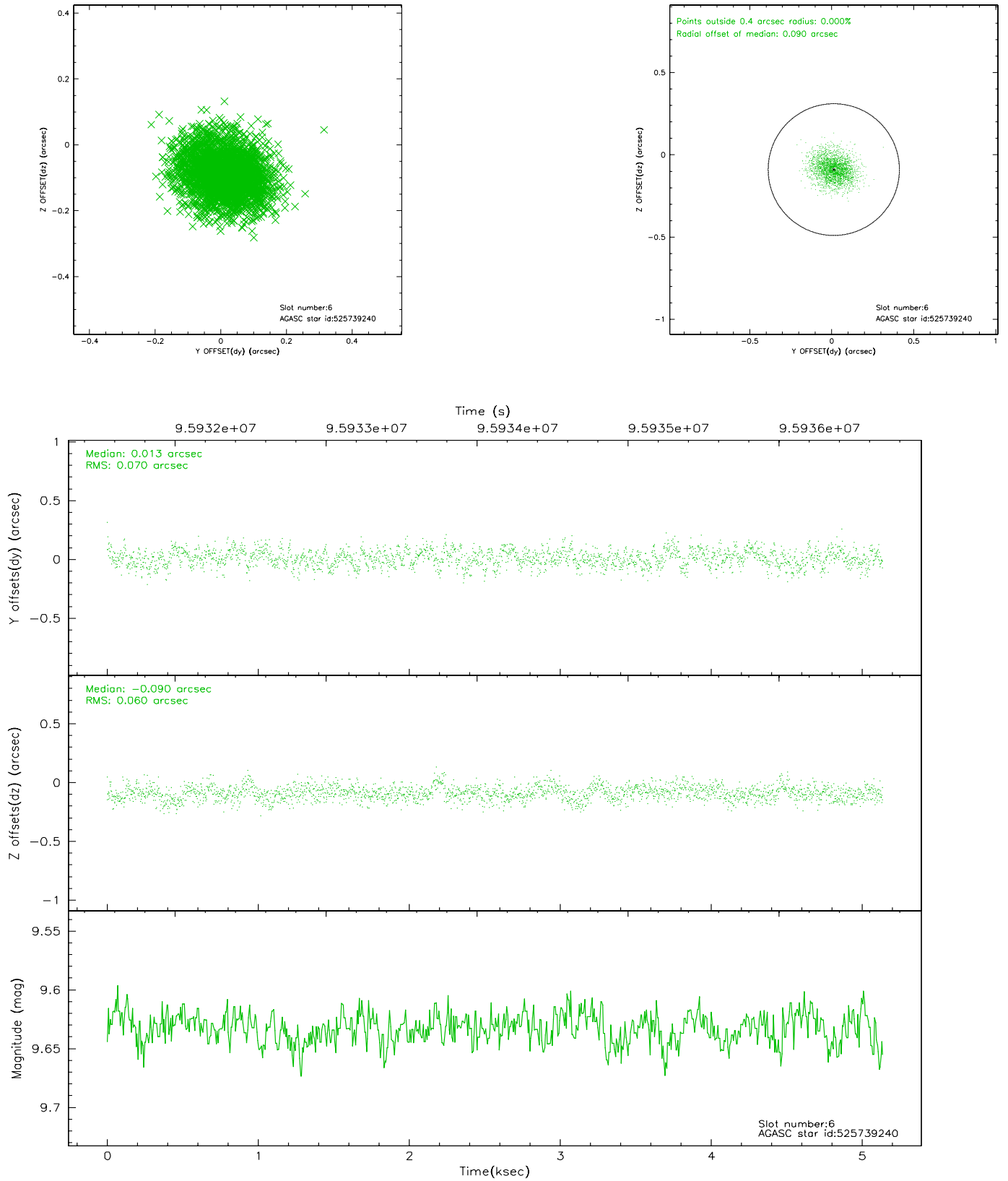
## 2.4.2 Slot 4



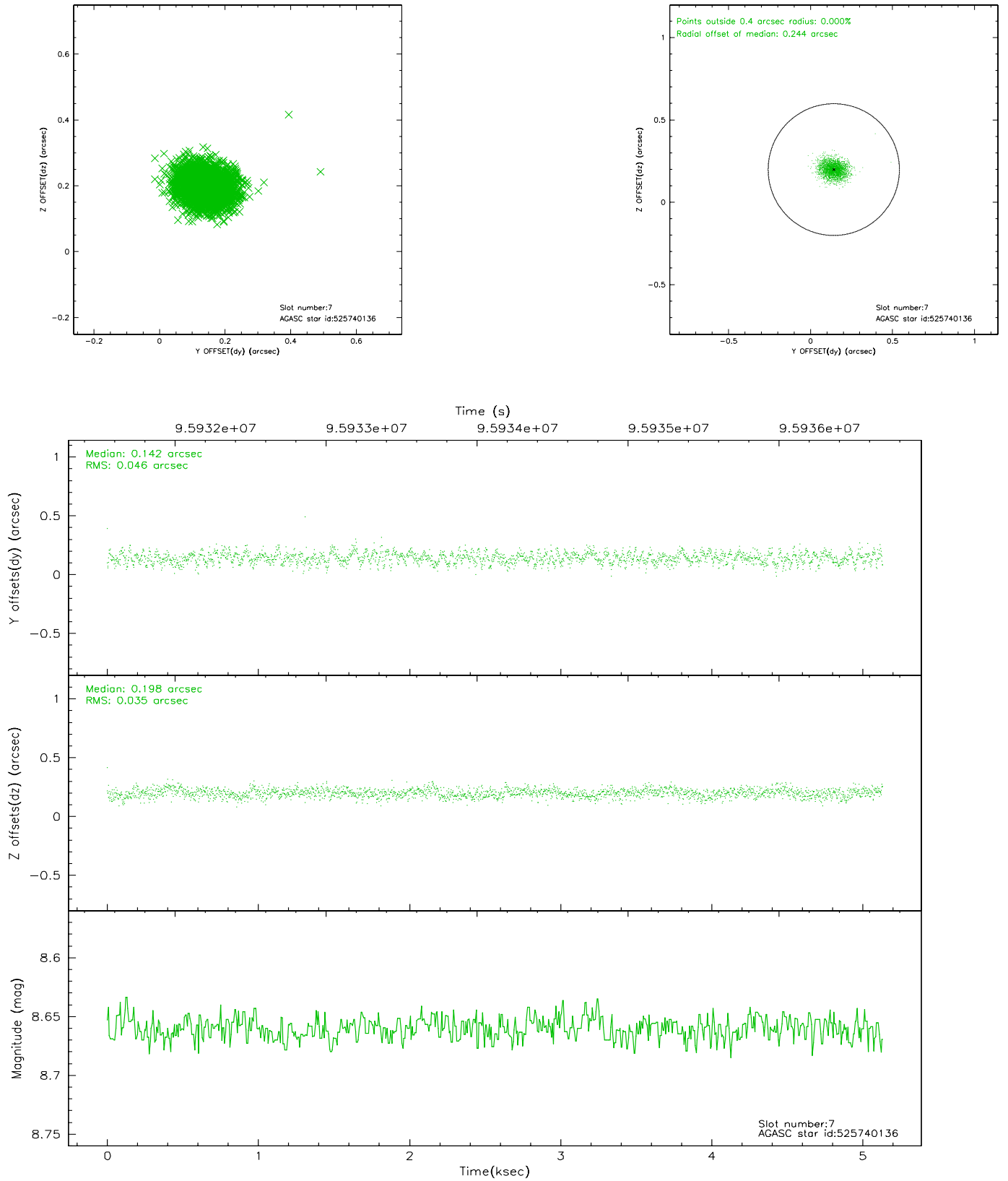
### 2.4.3 Slot 5



## 2.4.4 Slot 6

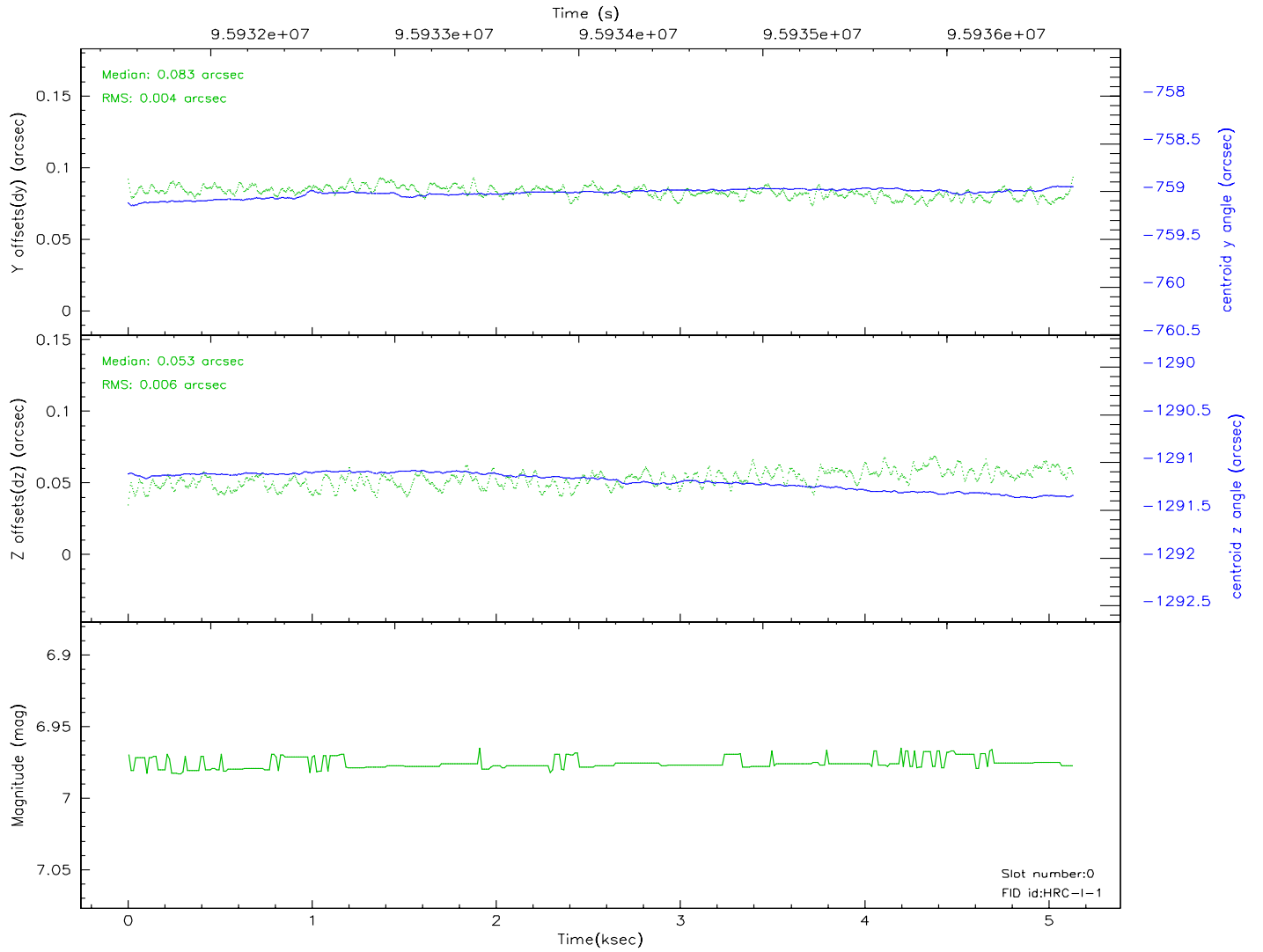
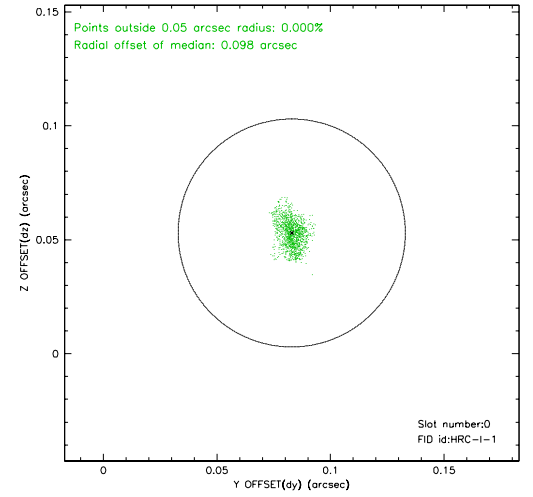
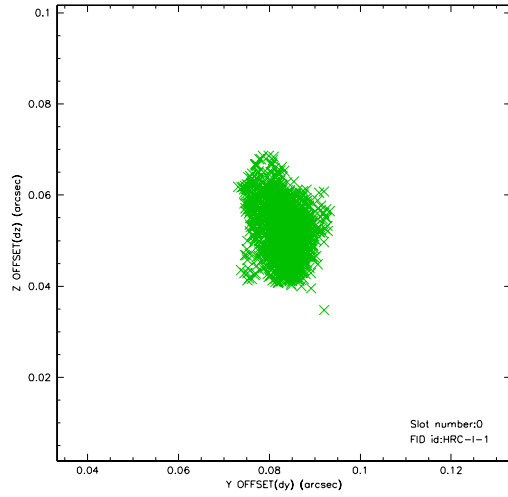


## 2.4.5 Slot 7

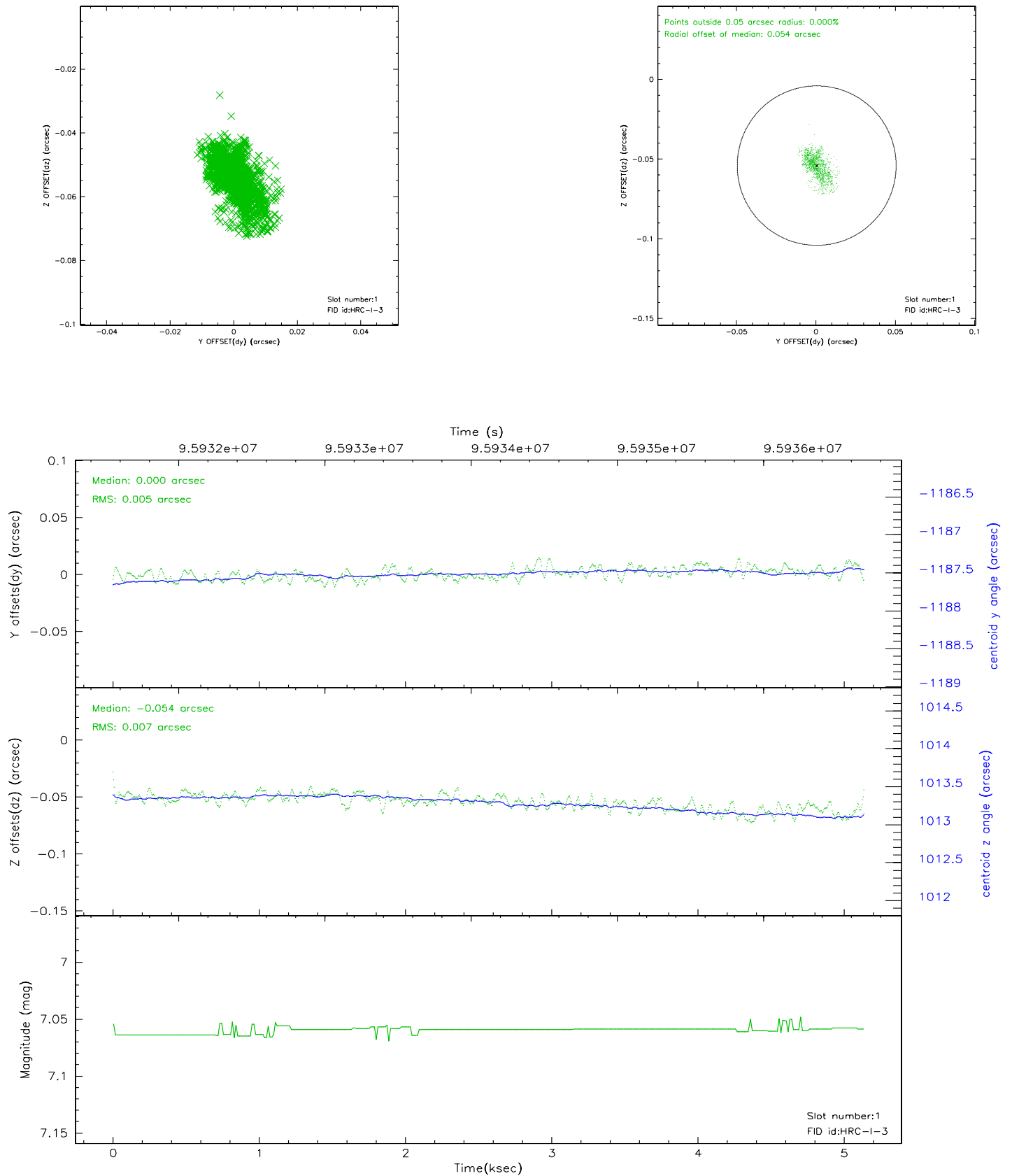


## 2.5 FID Slots

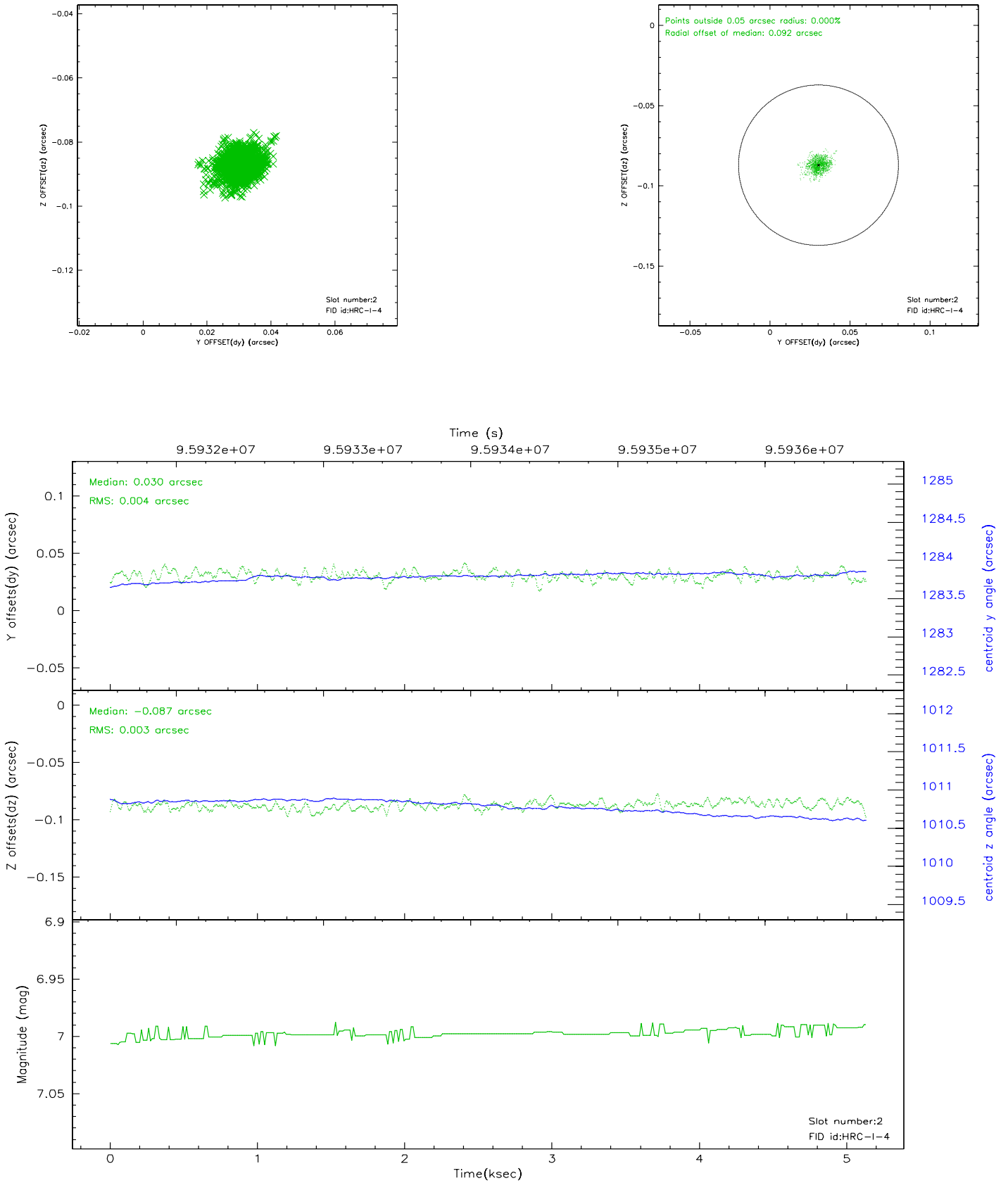
### 2.5.1 Slot 0



## 2.5.2 Slot 1

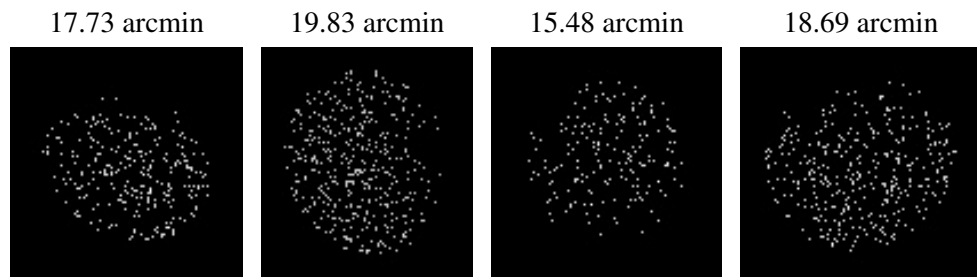


### 2.5.3 Slot 2





### 3 Point Sources



# A Summary

## A.1 Status

V&V Scientist	Jen Lauer
V&V Date (YYYY-MM-DD)	2007.12.04
V&V Edition	1
V&V Disposition and Status	OK
V&V Charge Time	4.983

## A.2 Comments

Window constraint met.

The current observation has been reprocessed as part of Repro III ('C' supplement) the purpose of which is to update all HRC-I ObsIDs since Jan 2000 to the latest calibrations available for that configuration. Specifically, we are updating the DEGAP solution and the Gain Maps applied. For more information see the Repro IIIC web page at

<http://asc.harvard.edu/cda/repro3.html#IIIC>

and the associated links.