

V&V Reference Report

L2 ASCDS Version : 7.6.9

Observation 1536 - L2 Version 001
Chandra X-Ray Center

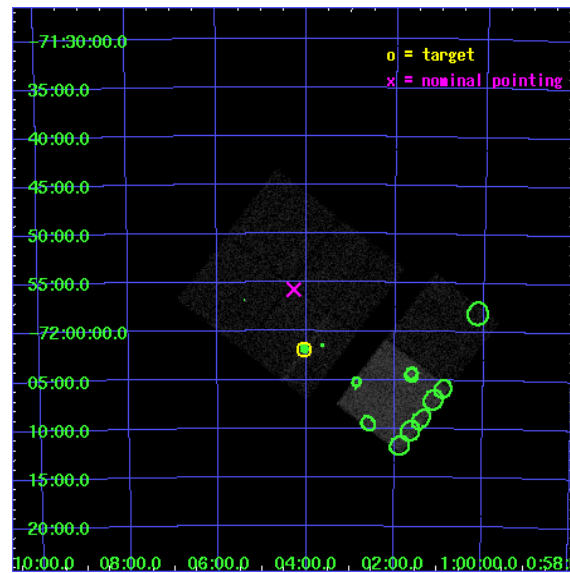
L2 Processing Date : Nov 25 2006

Contents

1	Front	2
2	OBI	3
2.1	OBI	3
2.1.1	Images	3
2.1.2	Bias	3
2.1.3	Parameters	4
2.1.4	Events	4
2.2	Compared Parameters	5
2.3	Aspect	6
2.4	Star Slots	9
2.4.1	Slot 3	9
2.4.2	Slot 4	10
2.4.3	Slot 5	11
2.4.4	Slot 6	12
2.4.5	Slot 7	13
2.5	FID Slots	14
2.5.1	Slot 0	14
2.5.2	Slot 1	15
2.5.3	Slot 2	16
3	Point Sources	17
A	Summary	18
A.1	Status	18
A.2	Comments	18

1 Front

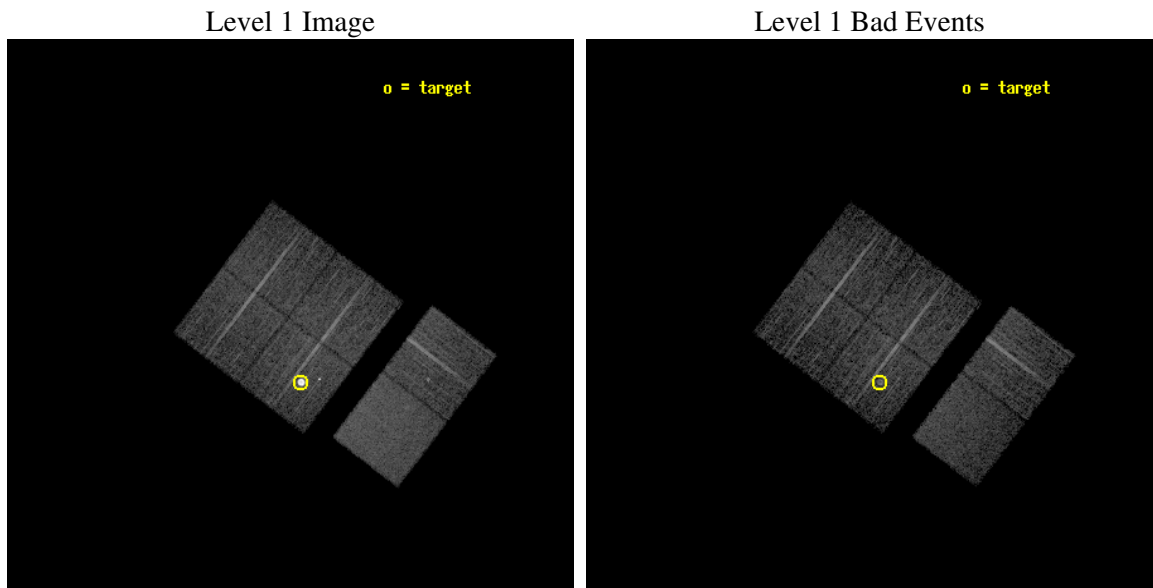
seq_num	590145
obs_id	1536
title	ACIS CALIBRATION OBSERVATION OF THE SUPERNOVA REMNANT E0102-72 (JUNE 2001)
observer	Dr. CXC Calibration
object	E0102-72.3 [Chip I3, T=120, Offsets=-4,4,0]
dtcycle	0
cycle	P
ra_targ	16.01
dec_targ	-72.032028
ra_nom	16.069800977317
dec_nom	-71.929031154414
roll_nom	127.30896604635
revision	2
ontime	7510.3590666652
livetime	7415.2583779678
ontime0	7513.6000069976
ontime1	7513.6000069976
ontime2	7513.6000069976
ontime3	7510.3590666652
ontime6	7513.6000069976
ontime7	7510.3590467423
l2events	74964



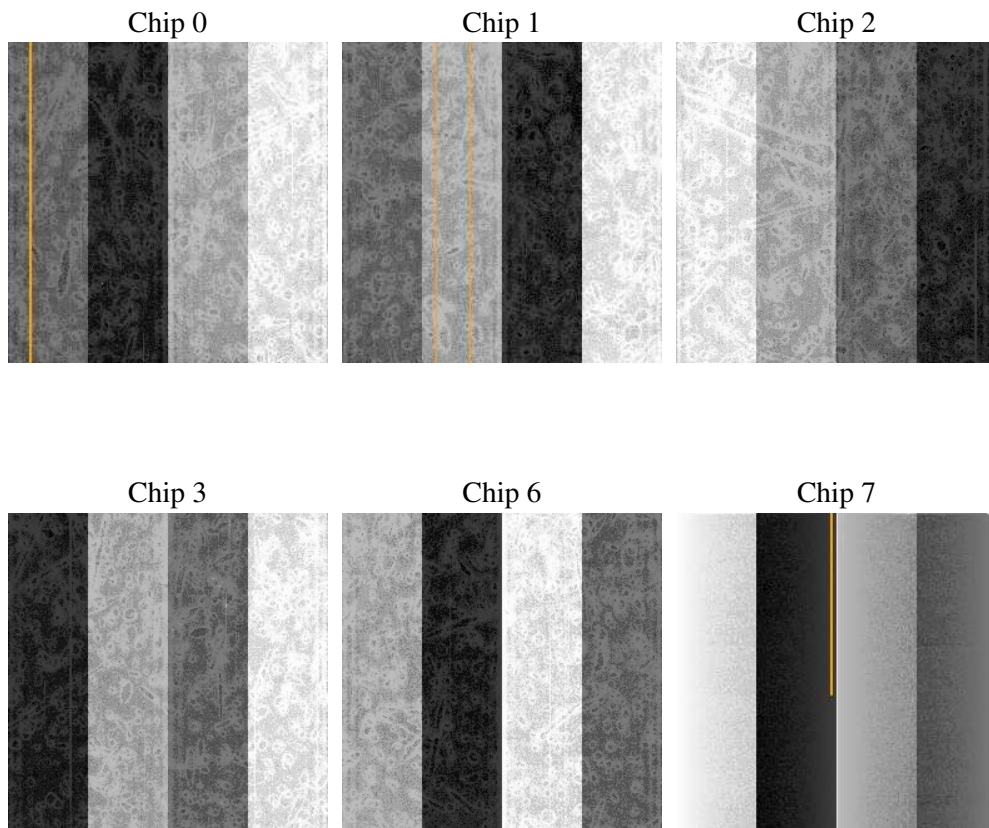
2 OBI

2.1 OBI

2.1.1 Images



2.1.2 Bias



2.1.3 Parameters

obi_num	0
ascdsver	7.6.9
caldbver	3.2.4
date	2006-11-25T06:56:52
revision	2

sched_exp_time	7755.000000
ontime	7515.8761124164
ontime0	7519.1170527488
ontime1	7519.1170726717
ontime2	7519.1170527488
ontime3	7515.8761124164
ontime6	7519.1170527488
ontime7	7515.8761124164
l1events	333181

2.1.4 Events

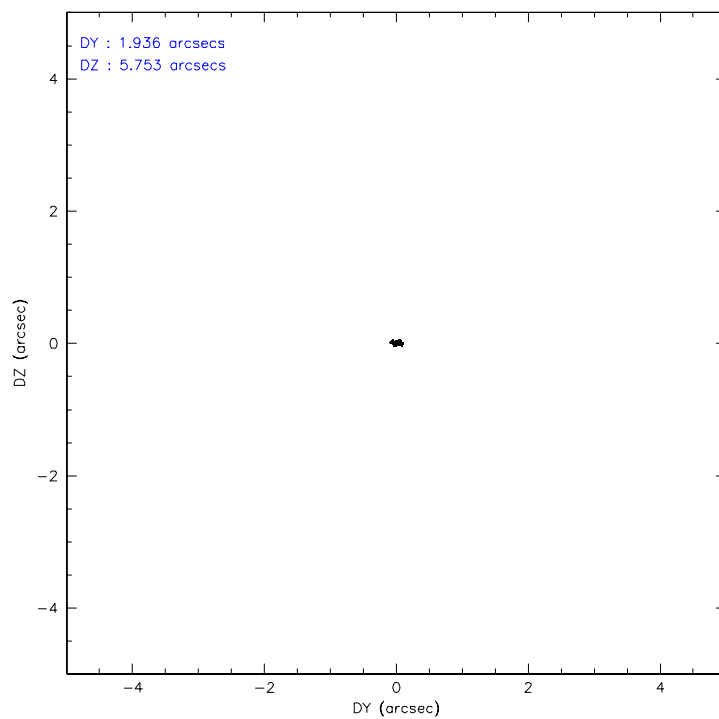
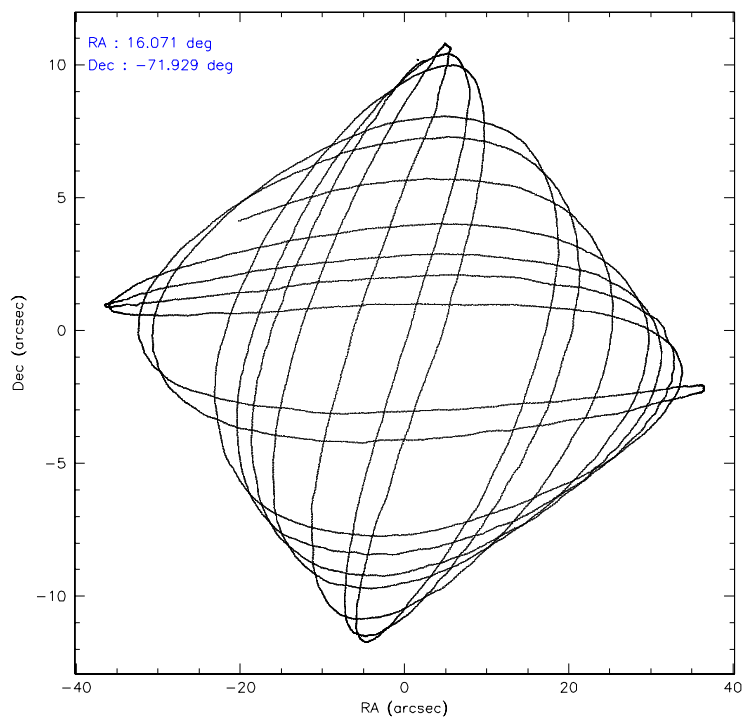
	ccd 0	ccd 1	ccd 2	ccd 3	ccd 6	ccd 7
level 1 events	45470	45308	50504	76475	51969	63455
rejected events	39778	39371	44677	44422	45644	39102
rejected %	87%	86%	88%	58%	87%	61%

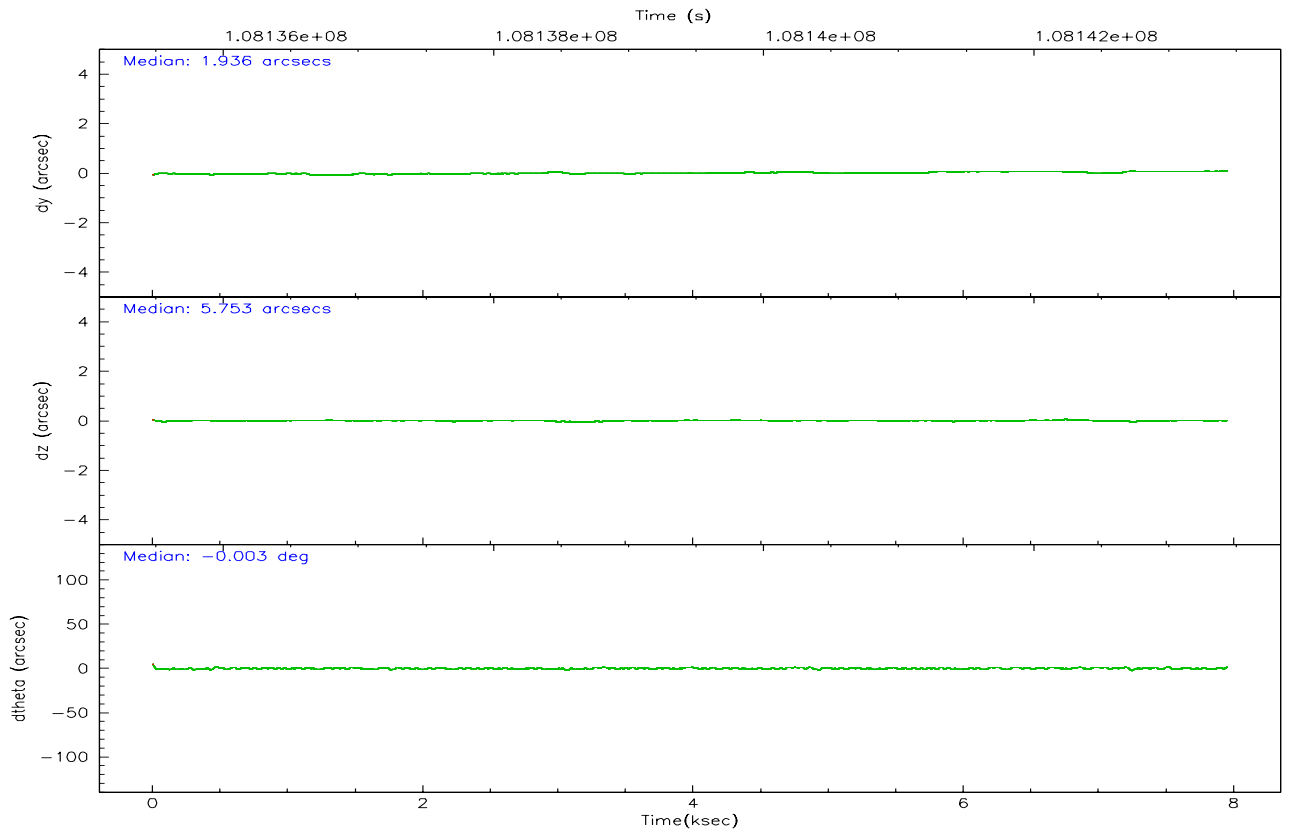
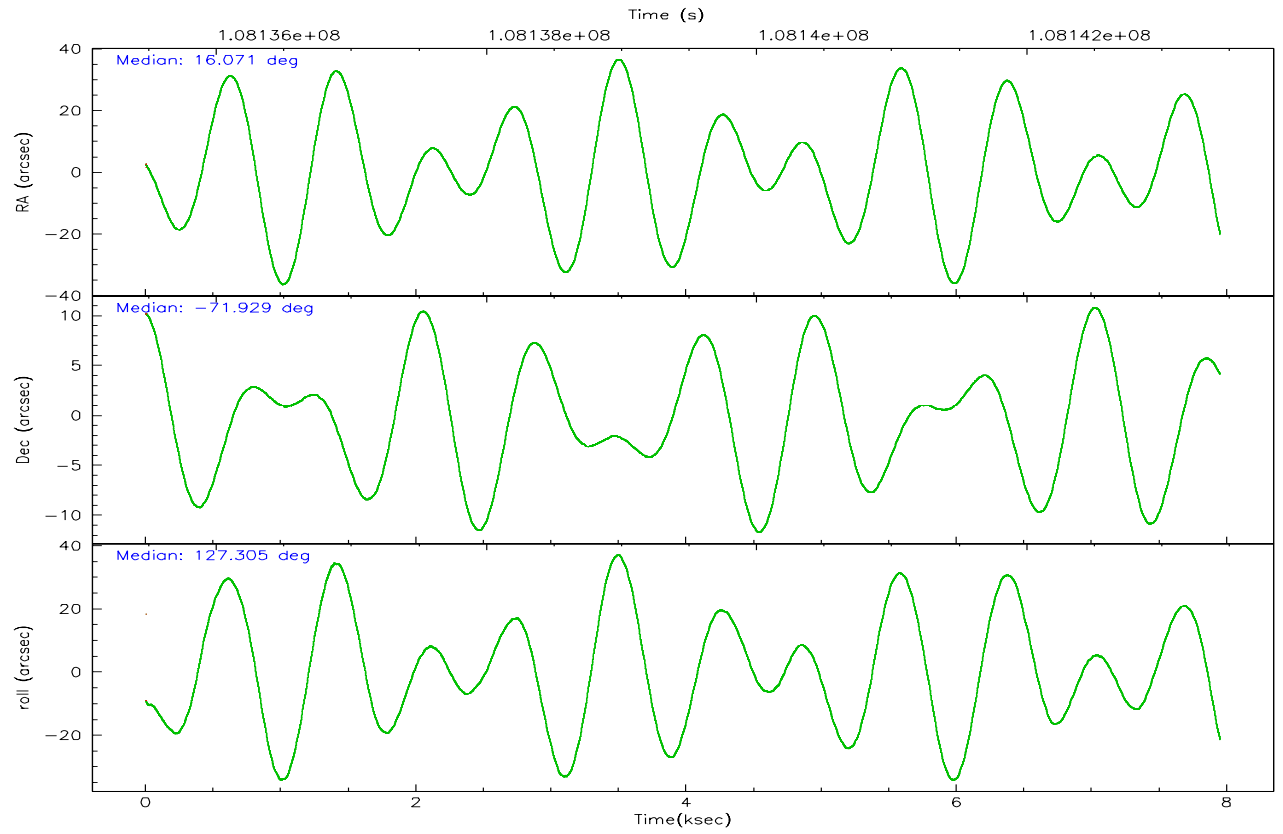
	ccd 0	ccd 1	ccd 2	ccd 3	ccd 6	ccd 7
grade 0 events	2301	2425	2615	25773	2794	1667
	5%	5%	5%	33%	5%	2%
grade 1 events	21	22	17	257	31	35
	0%	0%	0%	0%	0%	0%
grade 2 events	1320	1246	1213	3104	1226	5930
	2%	2%	2%	4%	2%	9%
grade 3 events	542	570	491	982	592	1380
	1%	1%	0%	1%	1%	2%
grade 4 events	540	585	519	1001	588	1314
	1%	1%	1%	1%	1%	2%
grade 5 events	1756	1963	1691	1933	2140	4157
	3%	4%	3%	2%	4%	6%
grade 6 events	996	1120	995	1214	1131	14080
	2%	2%	1%	1%	2%	22%
grade 7 events	37994	37377	42963	42211	43467	34892
	83%	82%	85%	55%	83%	54%

2.2 Compared Parameters

Parameter	Planned	Actual	Parameter	Planned	Actual
Instrument	ACIS	ACIS	Obspar format version number	6	6
Detector	ACIS-012367	ACIS-012367	Obspar file type	PREDICTED	ACTUAL
Grating	NONE	NONE	Obspar update status	NONE	UPDATED
Data mode	FAINT	FAINT	Number of optional ACIS chips dropped	0	0
Observation mode	POINTING	POINTING	On-chip summing requested	N	N
Pointing RA	16.151469	16.06980097731651	Subarray requested	NONE	NONE
Pointing Dec	-71.939557	-71.92903115441358	Alternating exposures requested	N	N
Pointing Roll	127.177916	127.3089660463496	Primary exposure time	0.000000	3.2
Window start time	107740864.184000	107740864.184000			
Window stop time	110246464.184000	110246464.184000			
SIM focus pos (mm)	-0.782348	-0.7809083437167272			
SIM defocus (mm)	0	0.001439871863259334			
SIM translation stage pos (mm)	-233.592463	-233.5874344608287			
SIM translation stage offset (mm)	0	-0.005018542100998502			
Observation start time	108135680.184000	108135304.14598			
Observation start date	2001-06-05T13:40:16	2001-06-05T13:35:04			
Observation end time	108143435.184000	108143666.6088			
Observation end date	2001-06-05T15:49:31	2001-06-05T15:54:26			
Read mode	TIMED	TIMED			

2.3 Aspect



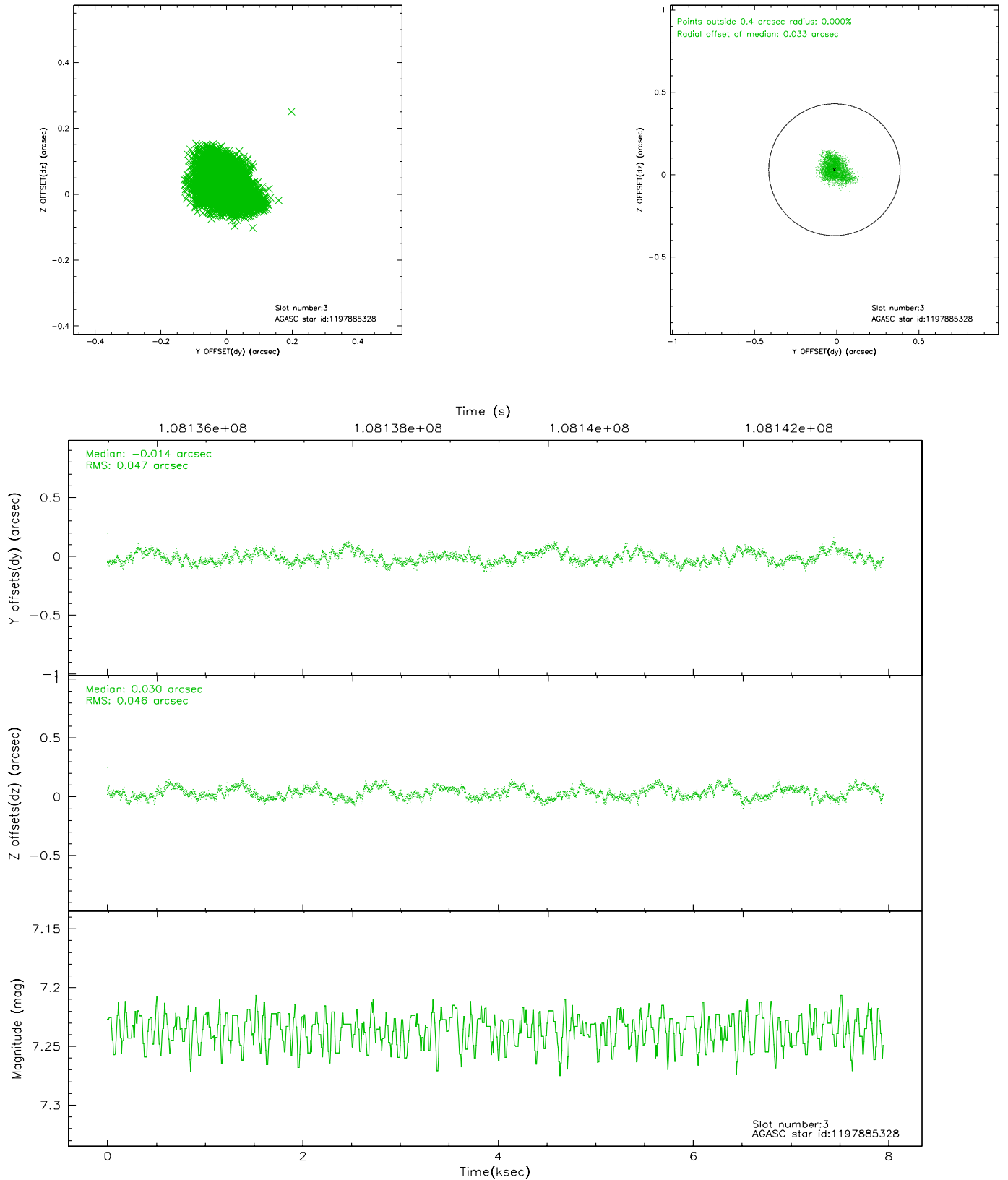


Slot Statistics

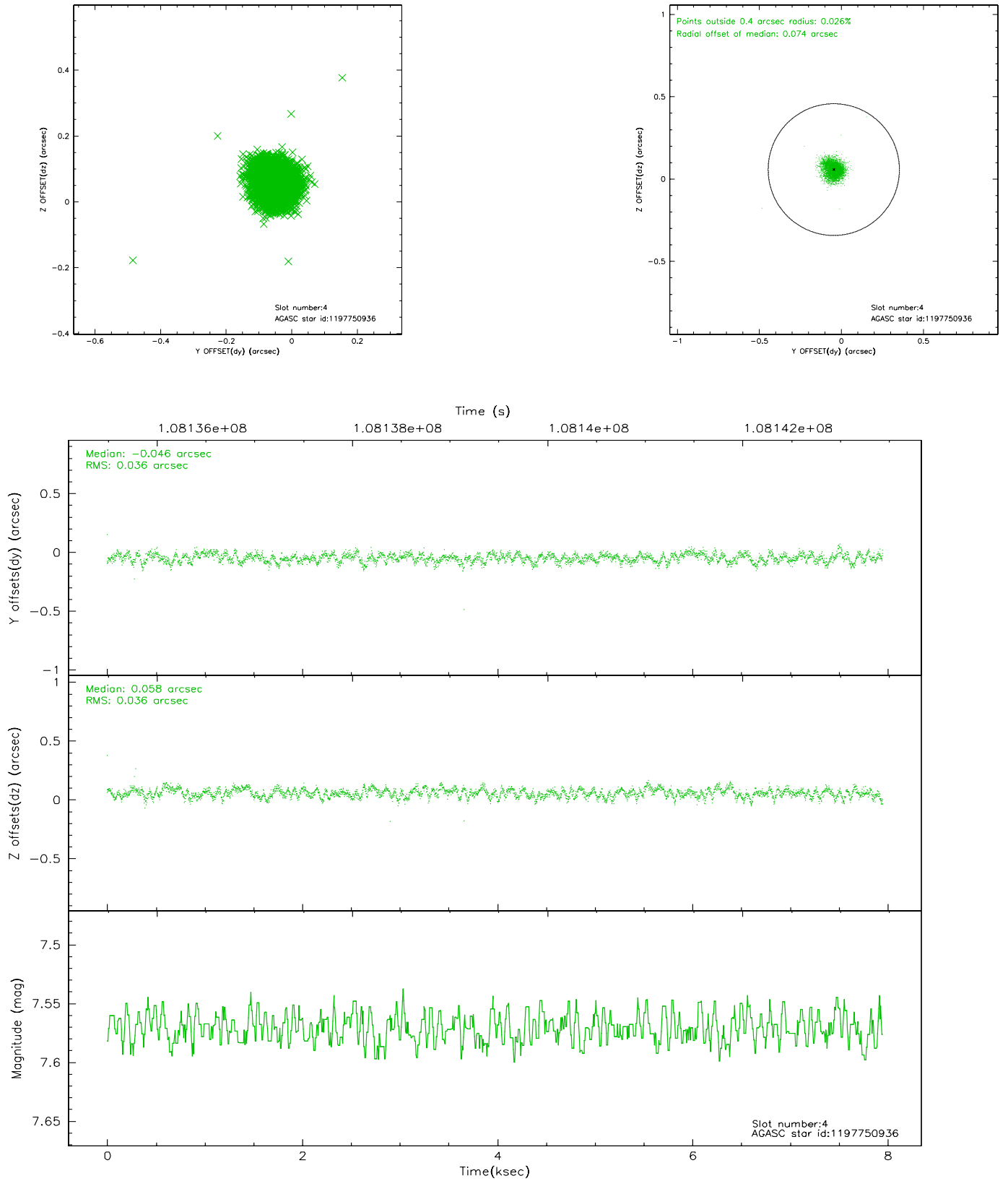
slot	status	id	mag	n_pts	med_dy	med_dz	dr1	dr2	ra	dec	mean_y	mean_z
0	FID	ACIS-I-2	7.15	1939	-0.023	-0.038	0.009	0.016	0.000000	0.000000	-756.31	-835.52
1	FID	ACIS-I-4	7.18	1940	-0.055	0.033	0.006	0.010	0.000000	0.000000	2157.38	1070.39
2	FID	ACIS-I-5	7.23	1940	-0.023	0.075	0.009	0.014	0.000000	0.000000	-1809.24	1069.06
3	GUIDE	1197885328	7.23	3878	-0.014	0.030	0.071	0.110	16.283090	-71.733943	501.10	-564.91
4	GUIDE	1197750936	7.57	3878	-0.046	0.058	0.054	0.085	15.387940	-71.549550	1641.20	-151.23
5	GUIDE	1197884536	8.50	3875	0.076	-0.061	0.069	0.109	17.160729	-71.835289	-391.13	-1122.97
6	GUIDE	1197878768	9.62	3876	-0.044	0.031	0.097	0.159	16.656786	-71.304581	1468.30	-1844.01
7	GUIDE	1197749416	10.30	3877	0.025	-0.060	0.147	0.235	13.610513	-71.871242	1869.12	2155.01

2.4 Star Slots

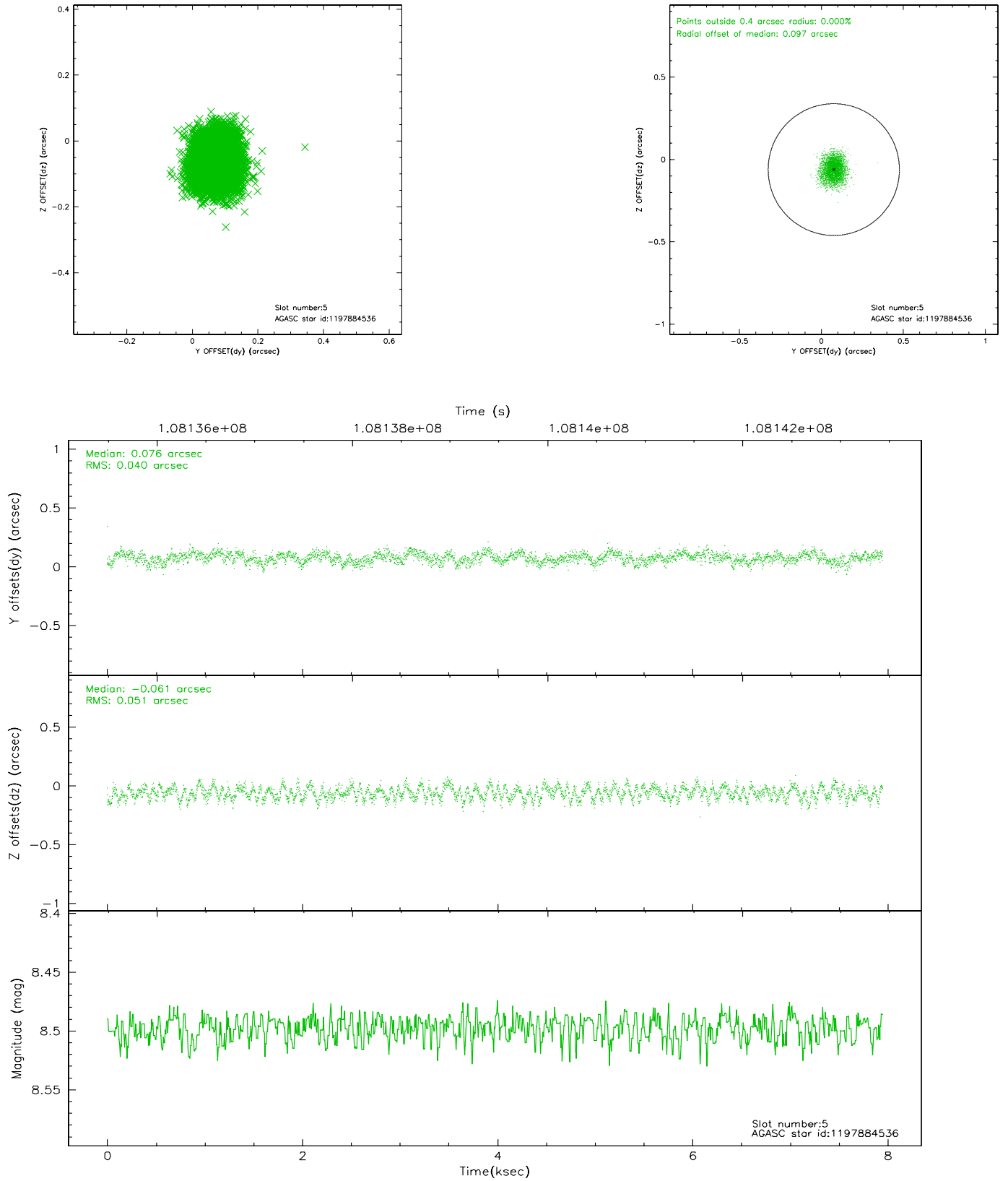
2.4.1 Slot 3



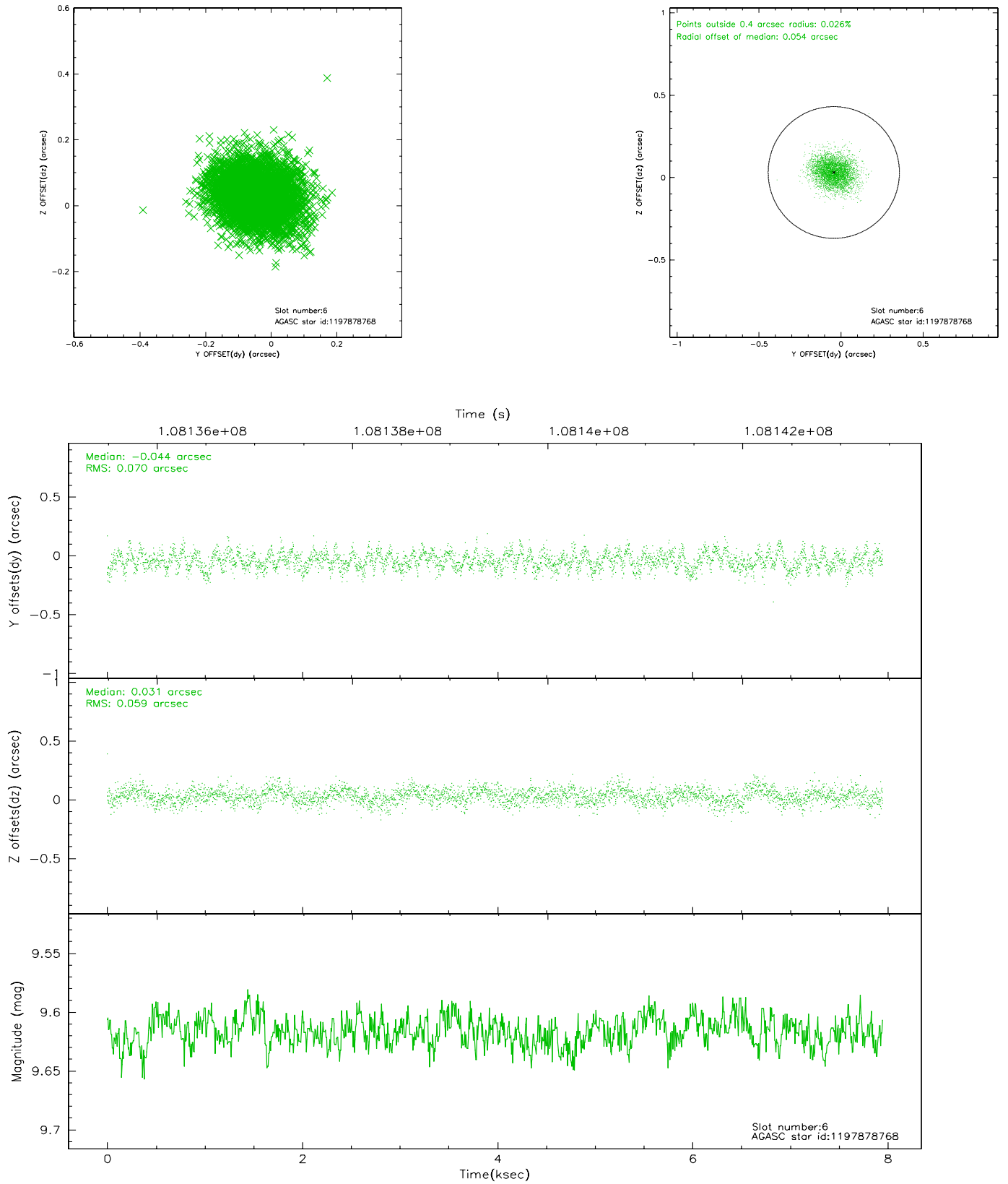
2.4.2 Slot 4



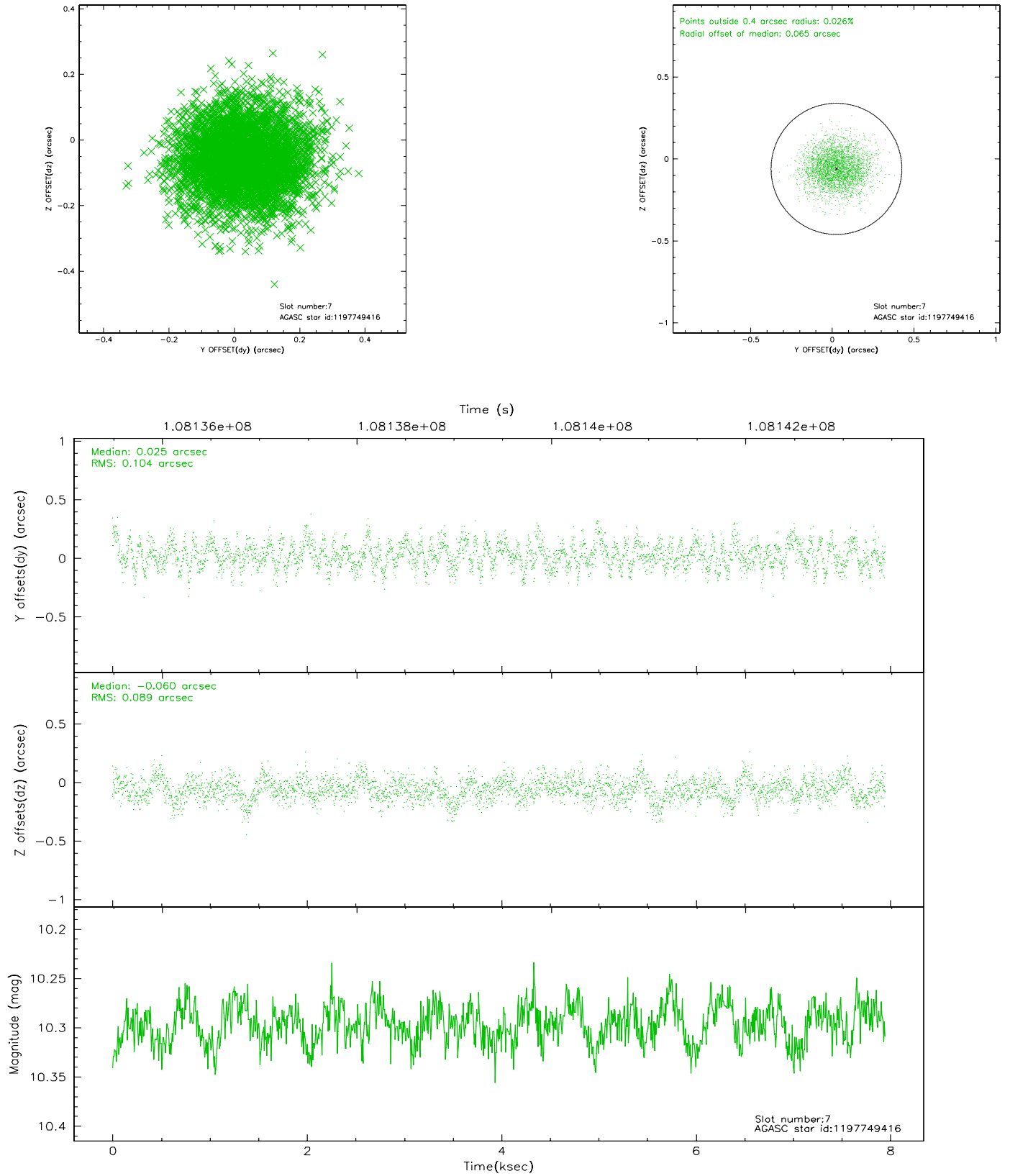
2.4.3 Slot 5



2.4.4 Slot 6

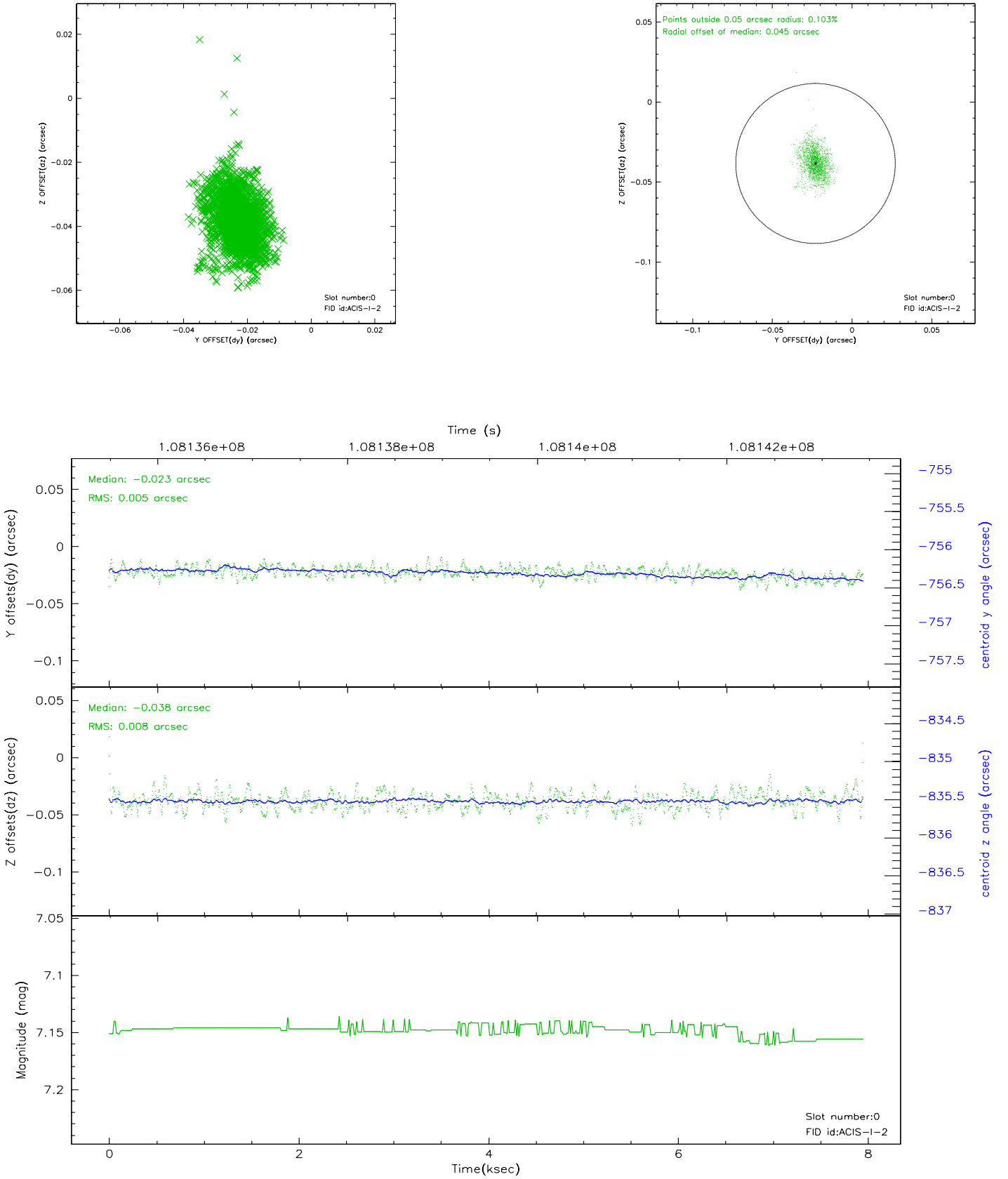


2.4.5 Slot 7

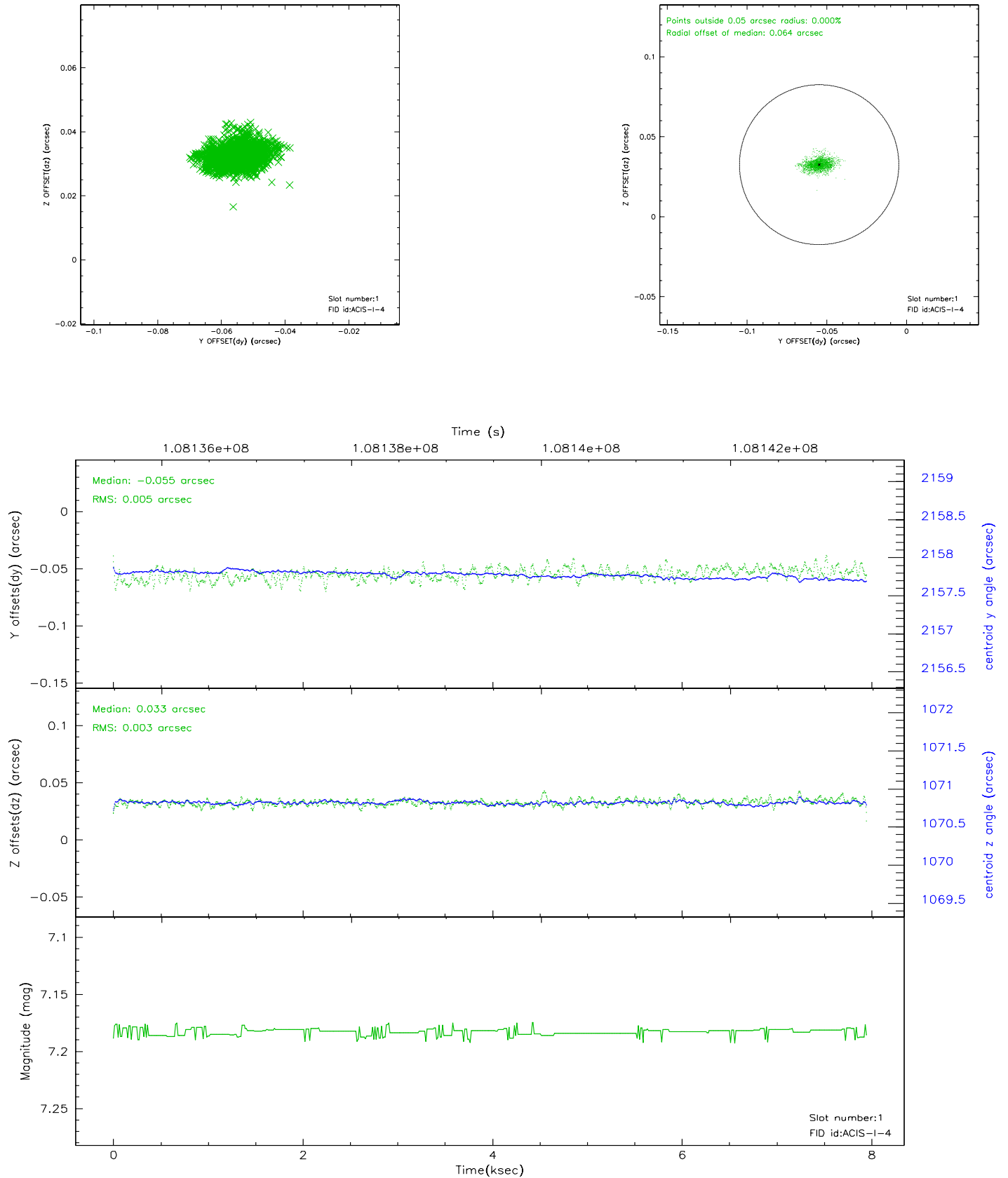


2.5 FID Slots

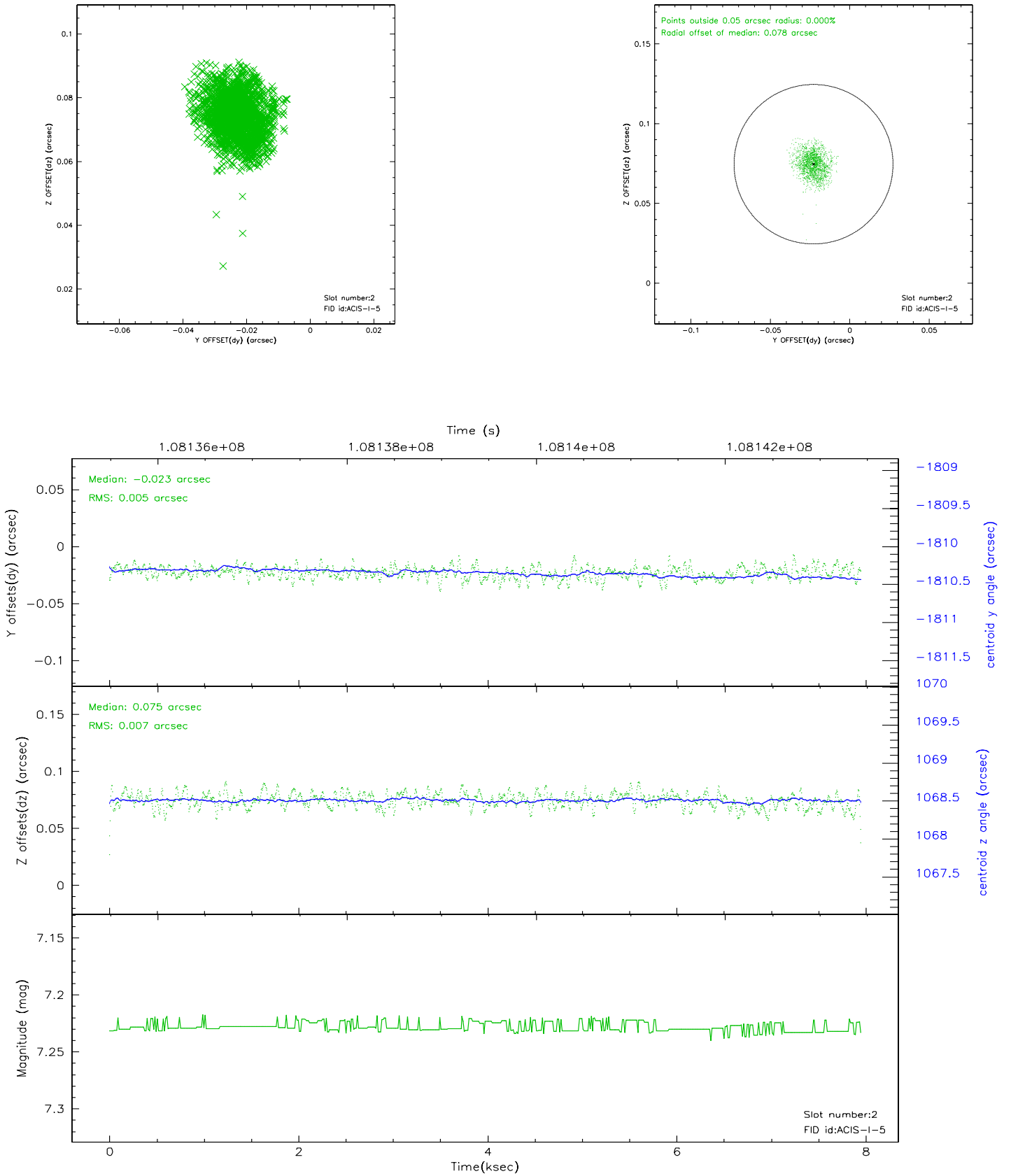
2.5.1 Slot 0



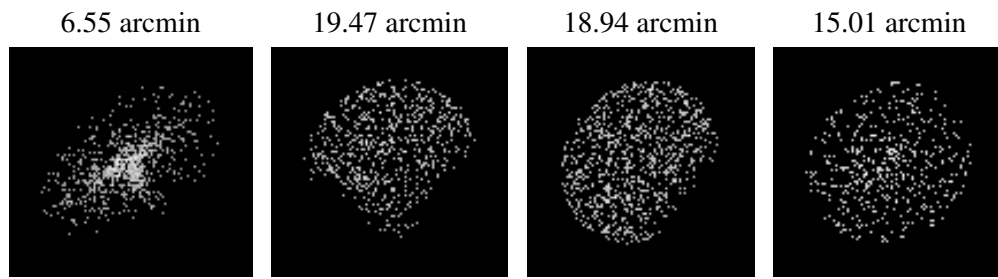
2.5.2 Slot 1



2.5.3 Slot 2



3 Point Sources



A Summary

A.1 Status

V&V Scientist	Beth Sundheim
V&V Date (YYYY-MM-DD)	2006.11.27
V&V Edition	1
V&V Disposition and Status	OK
V&V Charge Time	7.513

A.2 Comments

Window constraint OK.