

# V&V Reference Report

## L2 ASCDS Version : 7.6.9

Observation 1534 - L2 Version 001  
Chandra X-Ray Center

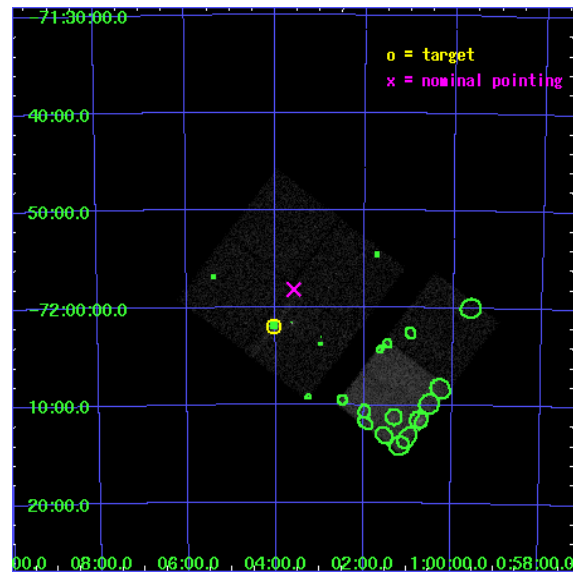
L2 Processing Date : Nov 25 2006

## Contents

<b>1</b>	<b>Front</b>	<b>2</b>
<b>2</b>	<b>OBI</b>	<b>3</b>
2.1	OBI . . . . .	3
2.1.1	Images . . . . .	3
2.1.2	Bias . . . . .	3
2.1.3	Parameters . . . . .	4
2.1.4	Events . . . . .	4
2.2	Compared Parameters . . . . .	5
2.3	Aspect . . . . .	6
2.4	Star Slots . . . . .	9
2.4.1	Slot 3 . . . . .	9
2.4.2	Slot 4 . . . . .	10
2.4.3	Slot 5 . . . . .	11
2.4.4	Slot 6 . . . . .	12
2.4.5	Slot 7 . . . . .	13
2.5	FID Slots . . . . .	14
2.5.1	Slot 0 . . . . .	14
2.5.2	Slot 1 . . . . .	15
2.5.3	Slot 2 . . . . .	16
<b>3</b>	<b>Point Sources</b>	<b>17</b>
<b>A</b>	<b>Summary</b>	<b>18</b>
A.1	Status . . . . .	18
A.2	Comments . . . . .	18

# 1 Front

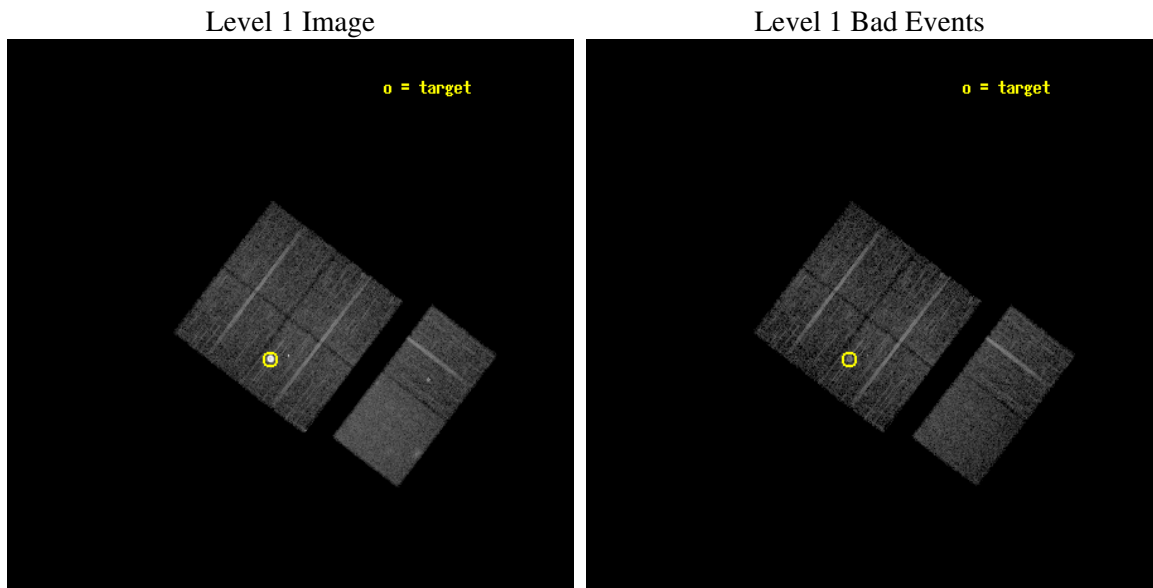
seq_num	590143
obs_id	1534
title	ACIS CALIBRATION OBSERVATION OF THE SUPERNOVA REMNANT E0102-72 (JUNE 2001)
observer	Dr. CXC Calibration
object	E0102-72.3 [Chip I3, T=120, Offsets=-4,0,0]
dtcycle	0
cycle	P
ra_targ	16.01
dec_targ	-72.032028
ra_nom	15.89732384723
dec_nom	-71.969258541404
roll_nom	127.32636252982
revision	2
ontime	7513.6000069976
livetime	7418.4582795622
ontime0	7513.6000069976
ontime1	7513.6000069976
ontime2	7513.6000069976
ontime3	7513.6000069976
ontime6	7513.6000069976
ontime7	7513.6000069976
l2events	77242



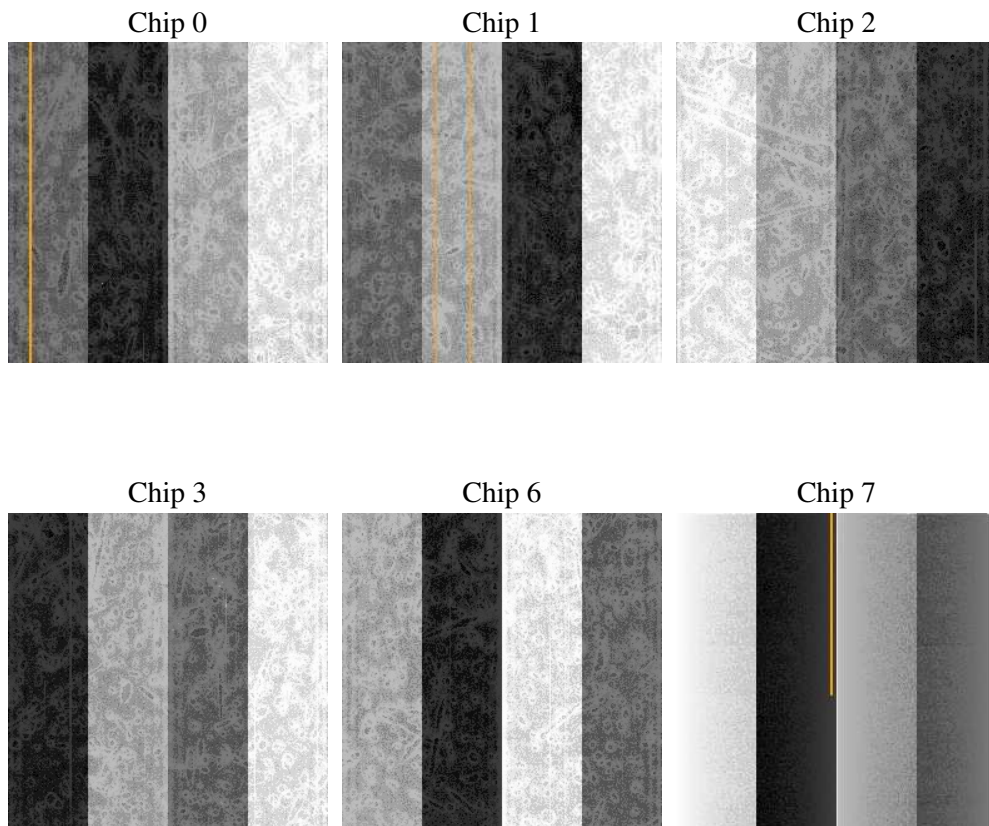
## 2 OBI

### 2.1 OBI

#### 2.1.1 Images



#### 2.1.2 Bias



### 2.1.3 Parameters

obi_num	0
ascdsver	7.6.9
caldbver	3.2.4
date	2006-11-25T06:51:05
revision	2

sched_exp_time	7755.000000
ontime	7519.116982758
ontime0	7519.1169827431
ontime1	7519.1170126647
ontime2	7519.1170126647
ontime3	7519.116982758
ontime6	7519.1169827431
ontime7	7519.116982758
l1events	330840

### 2.1.4 Events

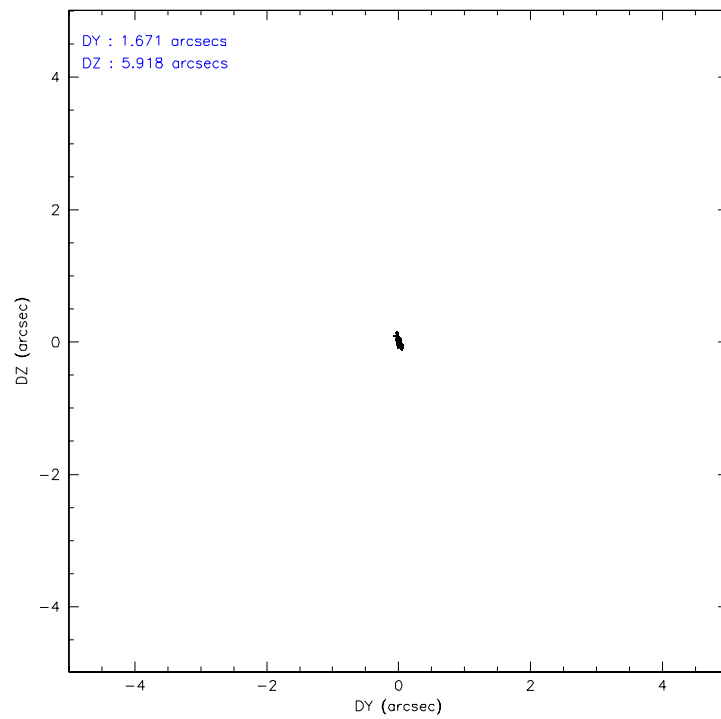
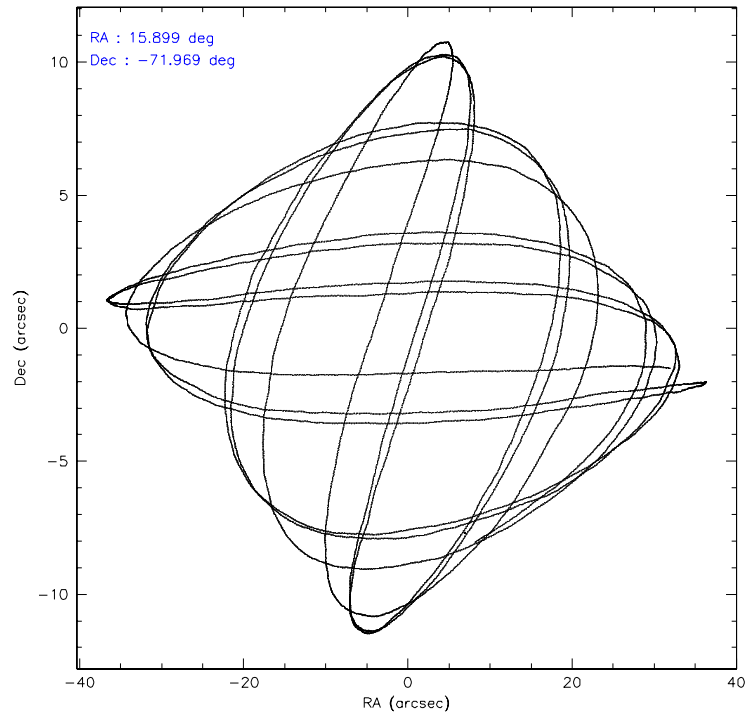
	ccd 0	ccd 1	ccd 2	ccd 3	ccd 6	ccd 7
level 1 events	43623	44587	49798	77896	51379	63557
rejected events	37908	38527	44055	44289	45088	38446
rejected %	86%	86%	88%	56%	87%	60%

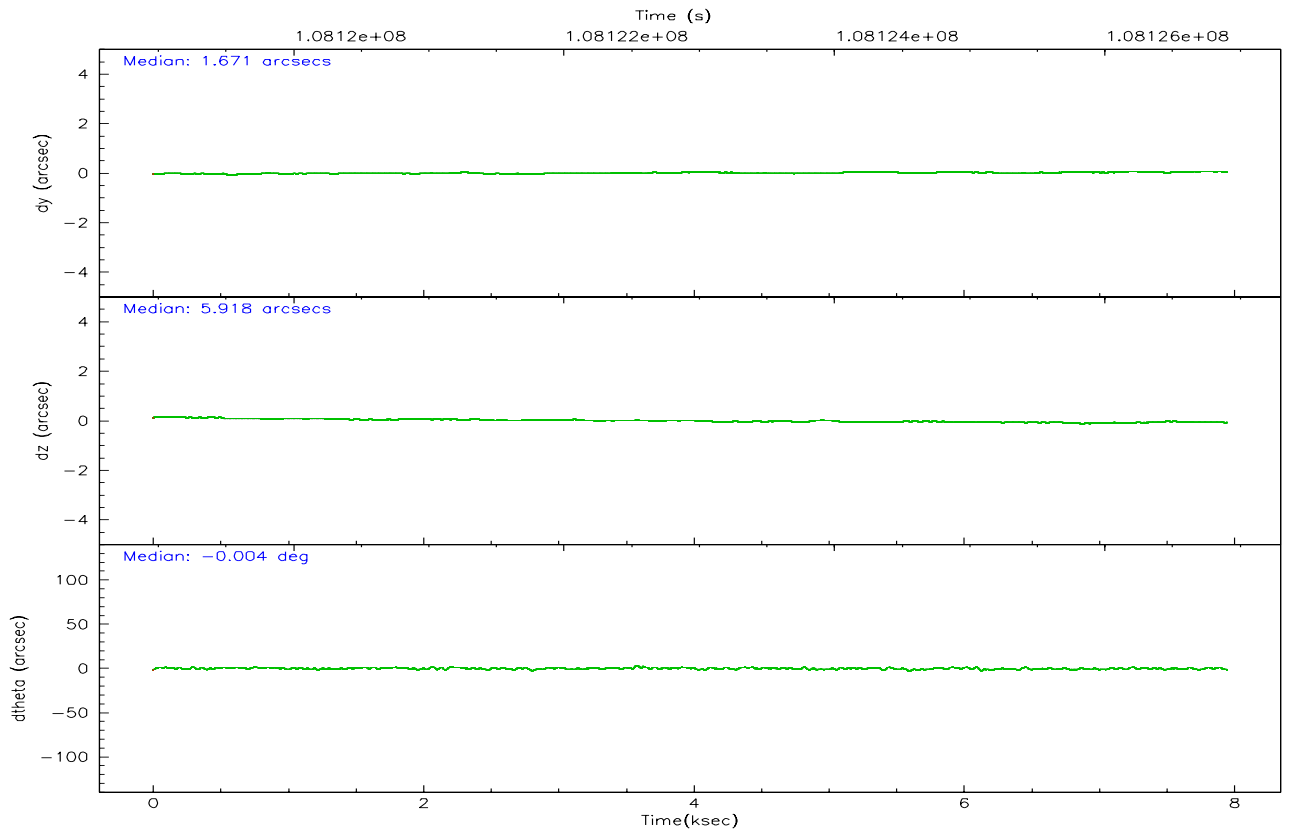
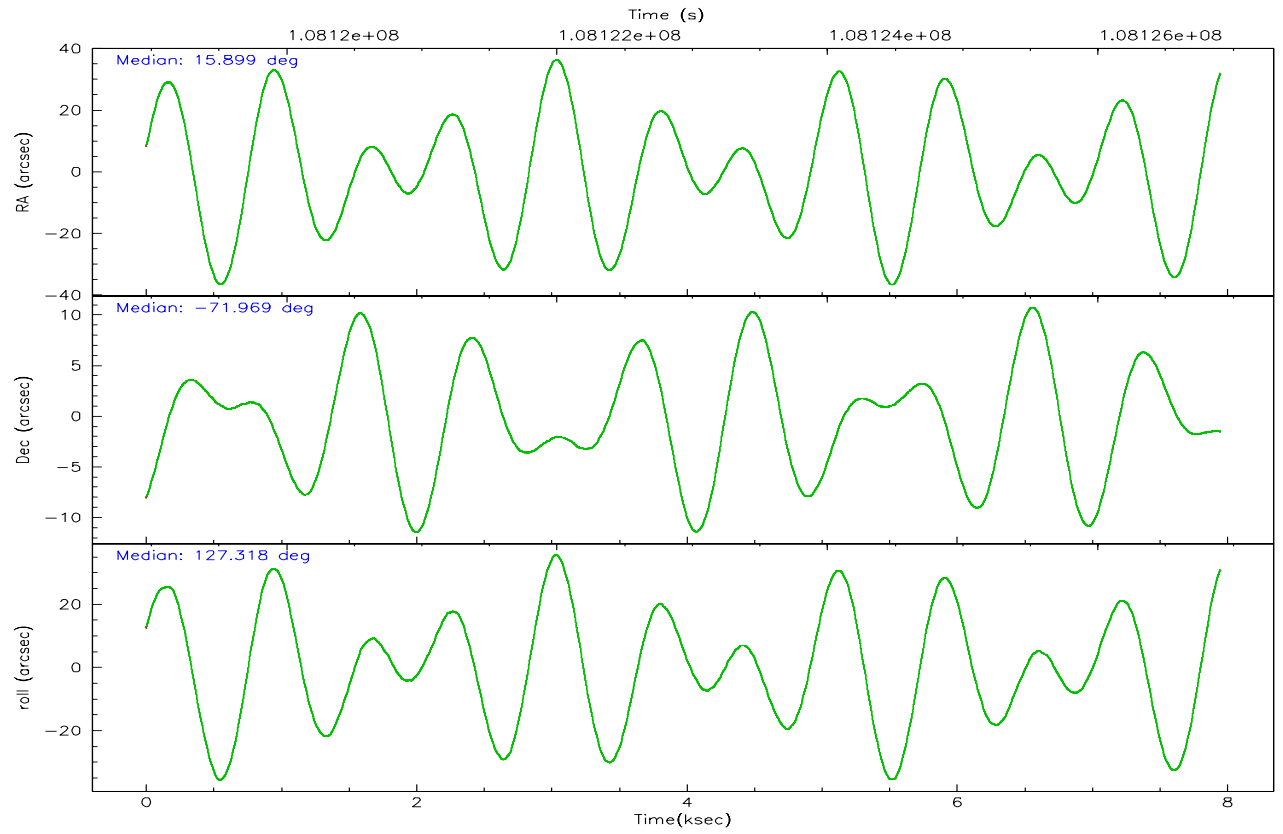
	ccd 0	ccd 1	ccd 2	ccd 3	ccd 6	ccd 7
grade 0 events	2436	2498	2574	27015	2848	1809
	5%	5%	5%	34%	5%	2%
grade 1 events	24	16	15	334	34	42
	0%	0%	0%	0%	0%	0%
grade 2 events	1237	1173	1138	3298	1192	6276
	2%	2%	2%	4%	2%	9%
grade 3 events	574	637	471	1004	572	1336
	1%	1%	0%	1%	1%	2%
grade 4 events	522	585	538	1042	552	1363
	1%	1%	1%	1%	1%	2%
grade 5 events	1786	1803	1529	1961	2094	4154
	4%	4%	3%	2%	4%	6%
grade 6 events	948	1174	1029	1273	1134	14358
	2%	2%	2%	1%	2%	22%
grade 7 events	36096	36701	42504	41969	42953	34219
	82%	82%	85%	53%	83%	53%

## 2.2 Compared Parameters

Parameter	Planned	Actual	Parameter	Planned	Actual
Instrument	ACIS	ACIS	Obspar format version number	6	6
Detector	ACIS-012367	ACIS-012367	Obspar file type	PREDICTED	ACTUAL
Grating	NONE	NONE	Obspar update status	NONE	UPDATED
Data mode	FAINT	FAINT	Number of optional ACIS chips dropped	0	0
Observation mode	POINTING	POINTING	On-chip summing requested	N	N
Pointing RA	15.979218	15.89732384723047	Subarray requested	NONE	NONE
Pointing Dec	-71.979825	-71.9692585414038	Alternating exposures requested	N	N
Pointing Roll	127.195551	127.3263625298225	Primary exposure time	0.000000	3.2
Window start time	107740864.184000	107740864.184000			
Window stop time	110246464.184000	110246464.184000			
SIM focus pos (mm)	-0.782348	-0.7809083437167272			
SIM defocus (mm)	0	0.001439871863259334			
SIM translation stage pos (mm)	-233.592463	-233.5874344608287			
SIM translation stage offset (mm)	0	-0.005018542100998502			
Observation start time	108119150.184000	108118773.97033			
Observation start date	2001-06-05T09:04:46	2001-06-05T08:59:33			
Observation end time	108126905.184000	108127038.54566			
Observation end date	2001-06-05T11:14:01	2001-06-05T11:17:18			
Read mode	TIMED	TIMED			

## 2.3 Aspect





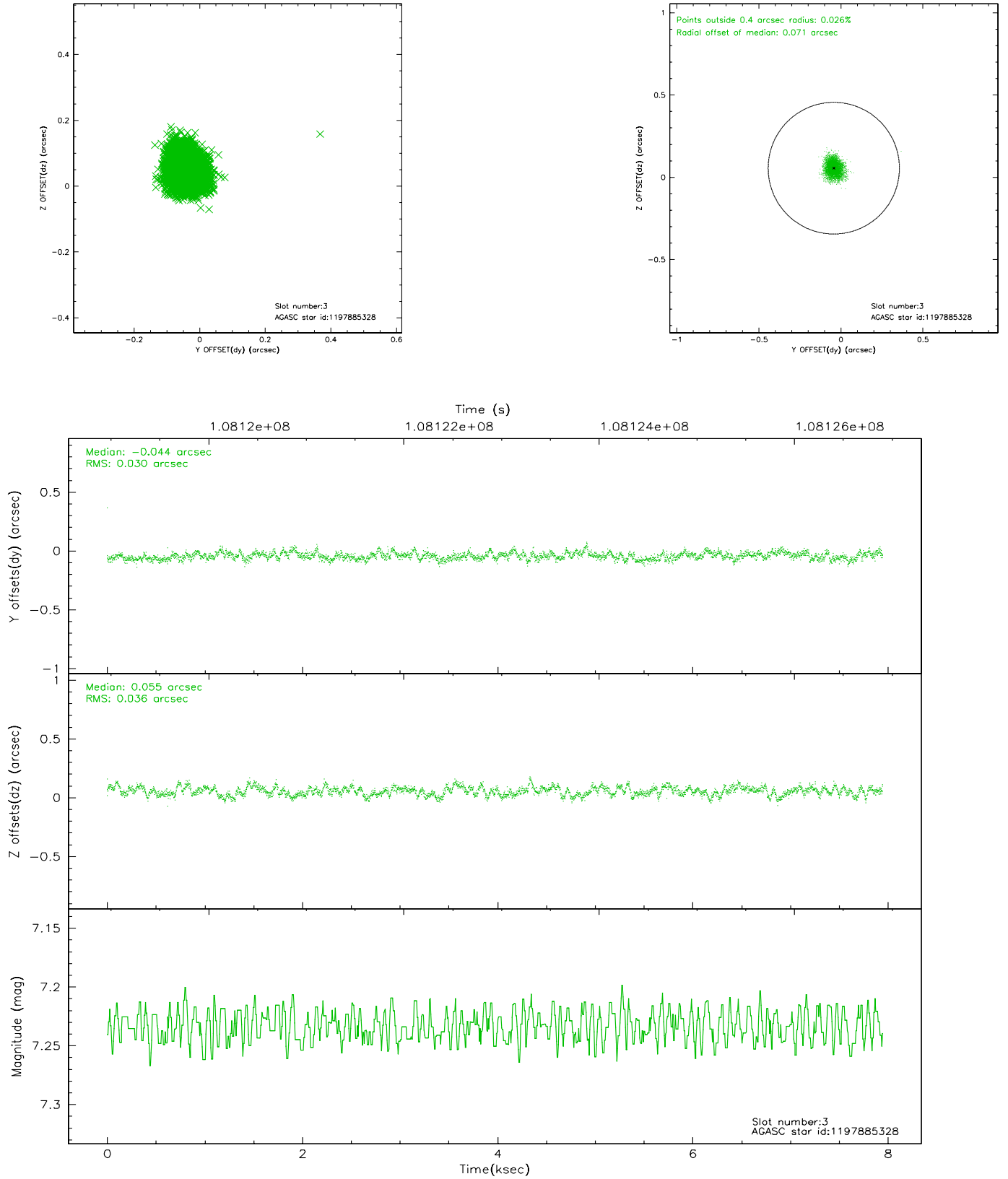
### Slot Statistics

slot	status	id	mag	n_pts	med_dy	med_dz	dr1	dr2	ra	dec	mean_y	mean_z
0	FID	ACIS-I-2	7.15	1939	-0.042	0.007	0.006	0.011	0.000000	0.000000	-756.04	-835.67
1	FID	ACIS-I-4	7.18	1938	-0.053	0.032	0.008	0.013	0.000000	0.000000	2157.64	1070.25
2	FID	ACIS-I-6	7.26	1939	-0.004	0.025	0.010	0.017	0.000000	0.000000	404.93	1713.19
3	GUIDE	1197885328	7.23	3877	-0.044	0.055	0.050	0.080	16.283090	-71.733943	498.13	-806.67
4	GUIDE	1198189696	7.37	3878	0.121	-0.167	0.054	0.086	15.223750	-72.697522	-1572.45	2209.83
5	GUIDE	1197750936	7.57	3878	-0.034	0.064	0.054	0.089	15.387940	-71.549550	1639.02	-395.80
6	GUIDE	1197884536	8.49	3876	0.038	0.018	0.104	0.159	17.160729	-71.835289	-395.82	-1361.98
7	GUIDE	1197878768	9.61	3875	-0.088	0.038	0.088	0.147	16.656786	-71.304581	1461.39	-2088.82

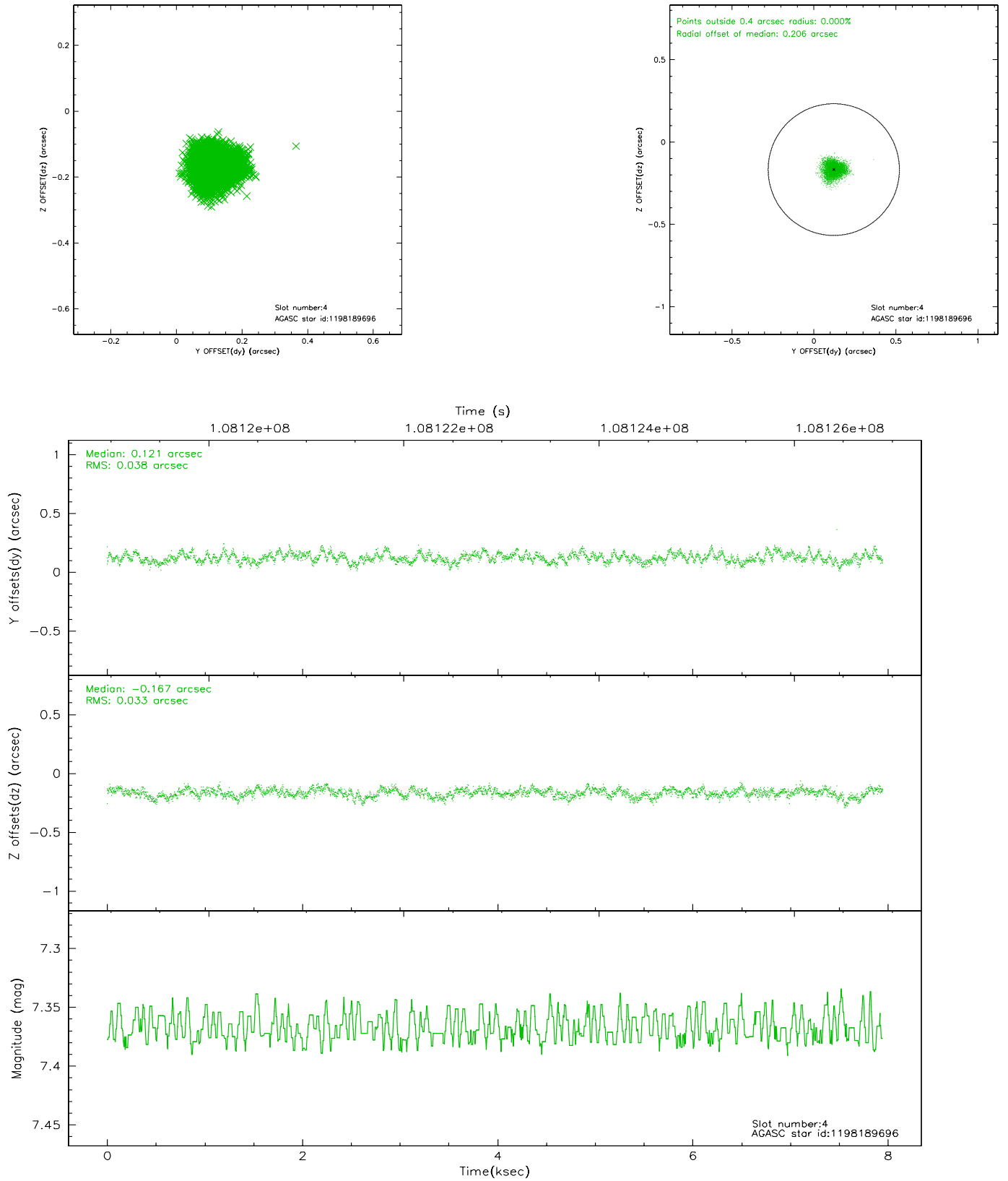


## 2.4 Star Slots

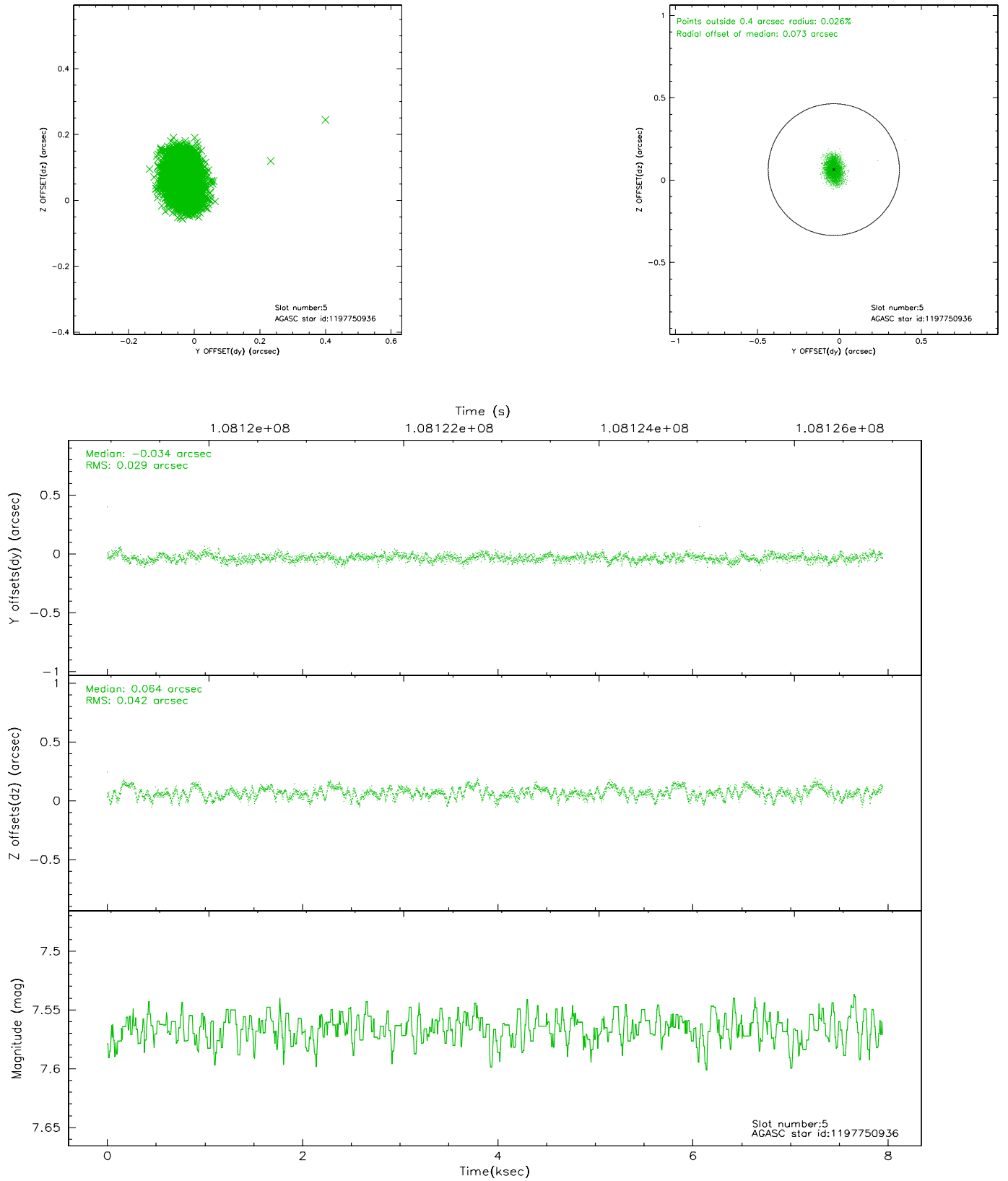
### 2.4.1 Slot 3



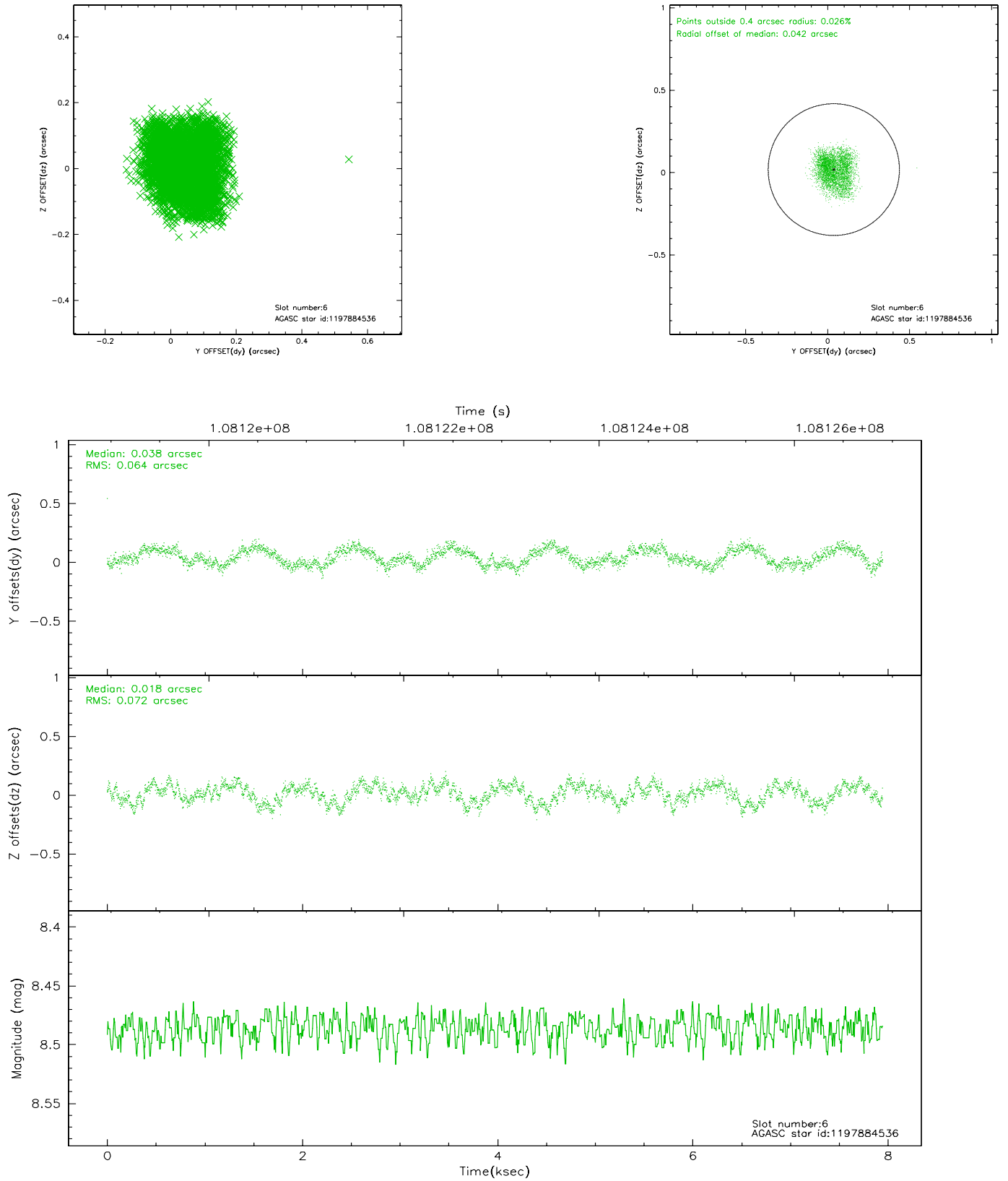
## 2.4.2 Slot 4



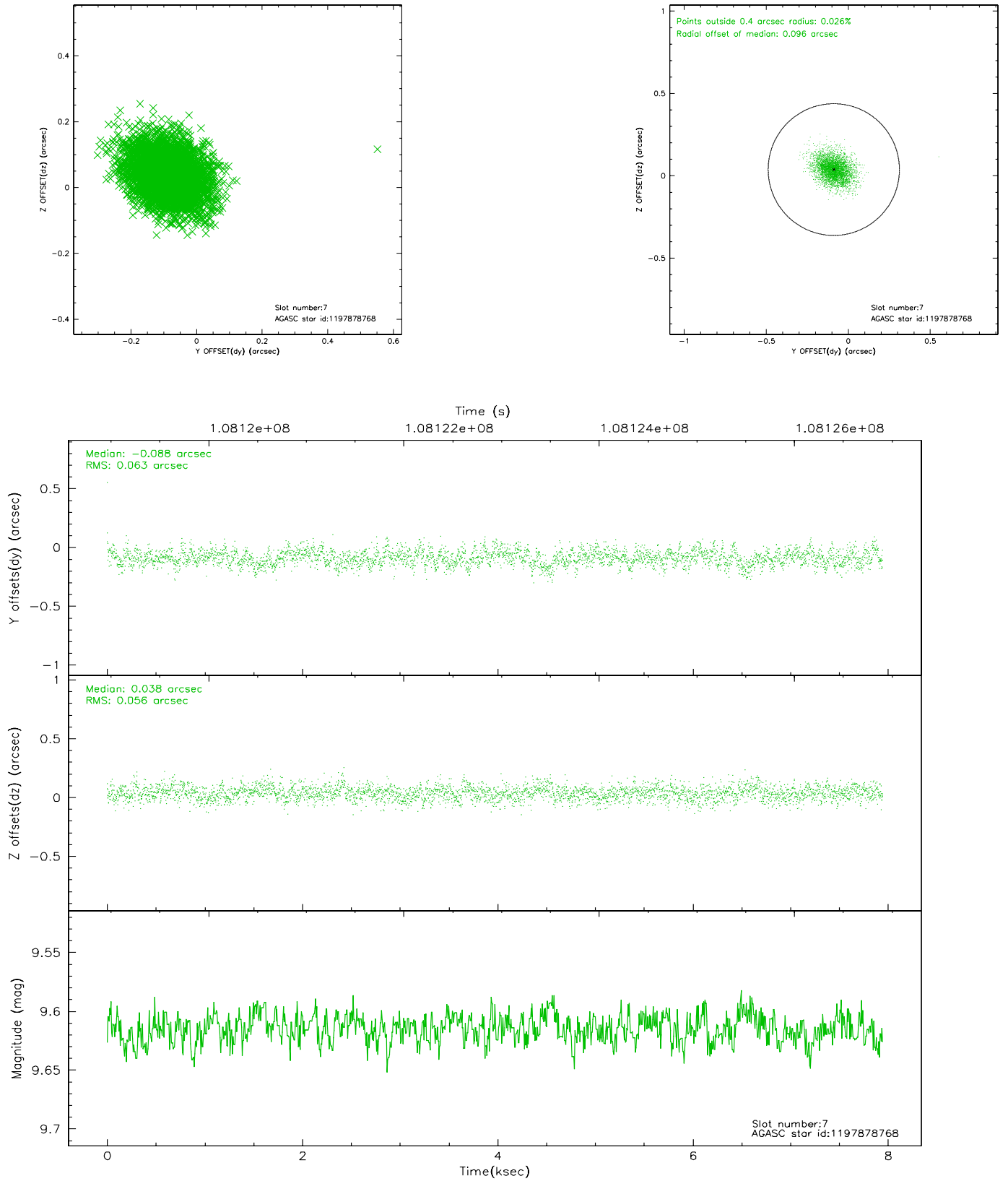
### 2.4.3 Slot 5



## 2.4.4 Slot 6

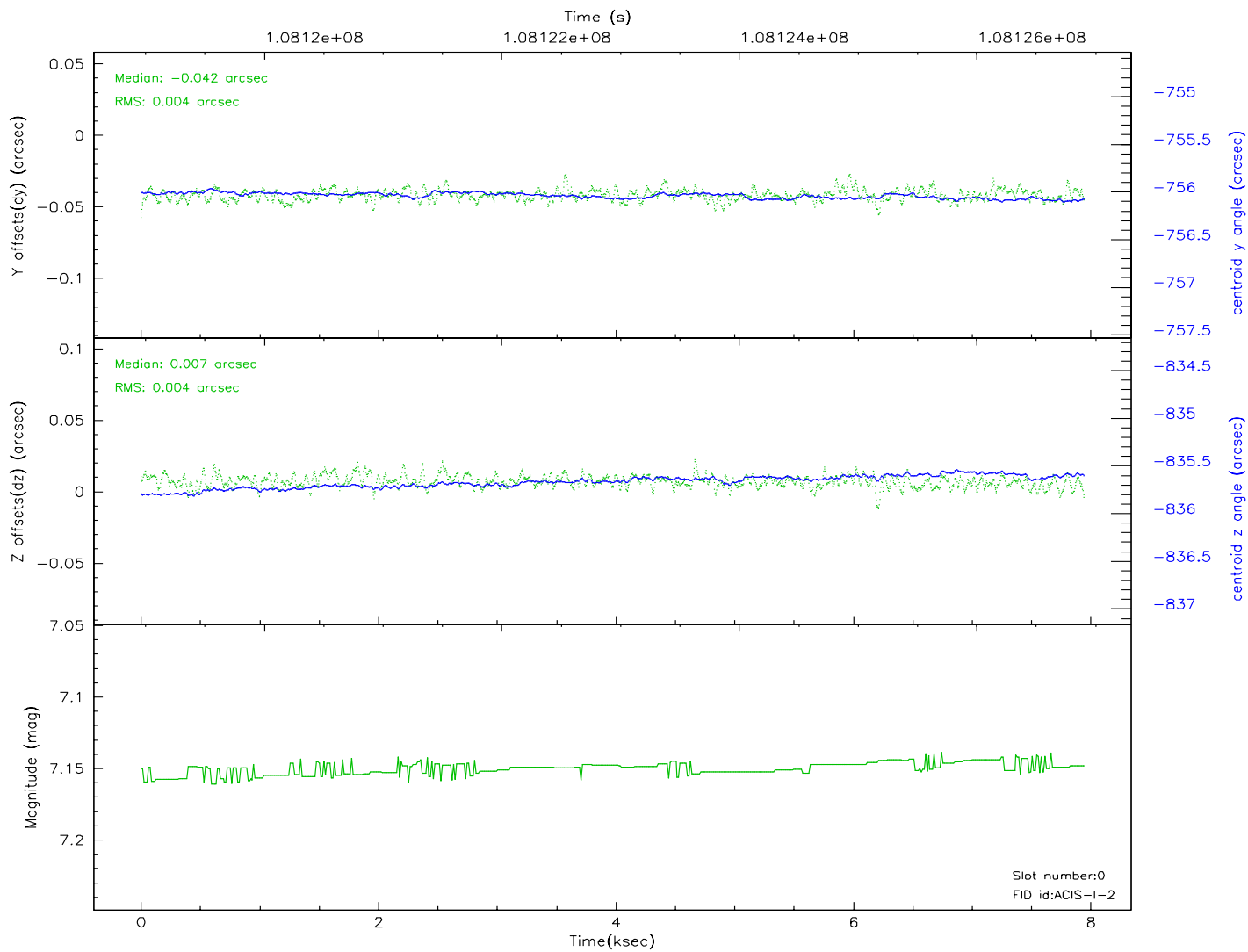
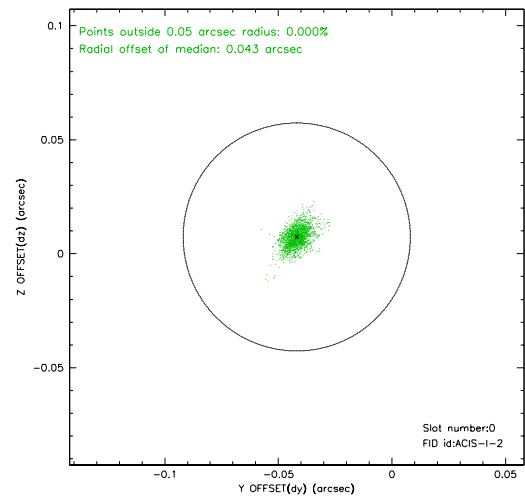
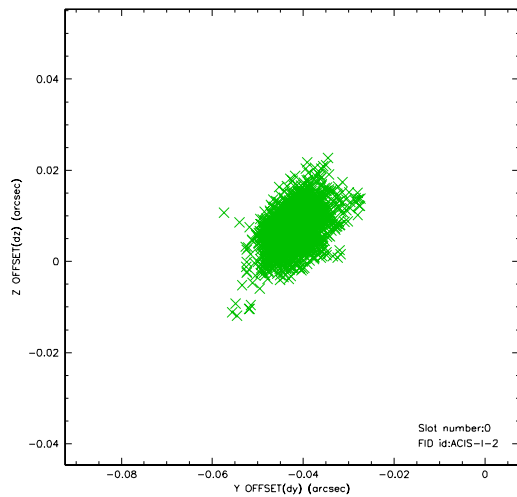


## 2.4.5 Slot 7

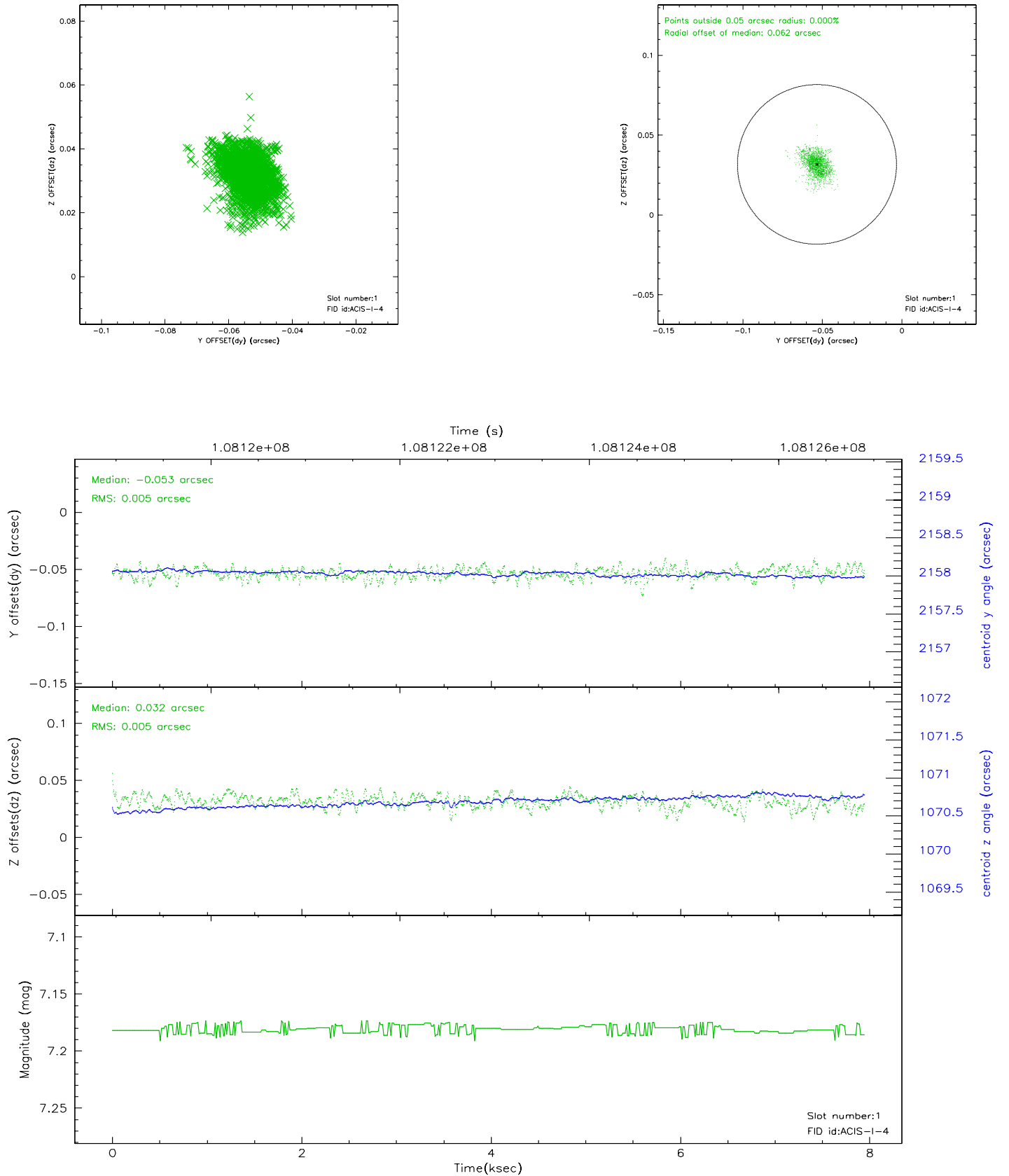


## 2.5 FID Slots

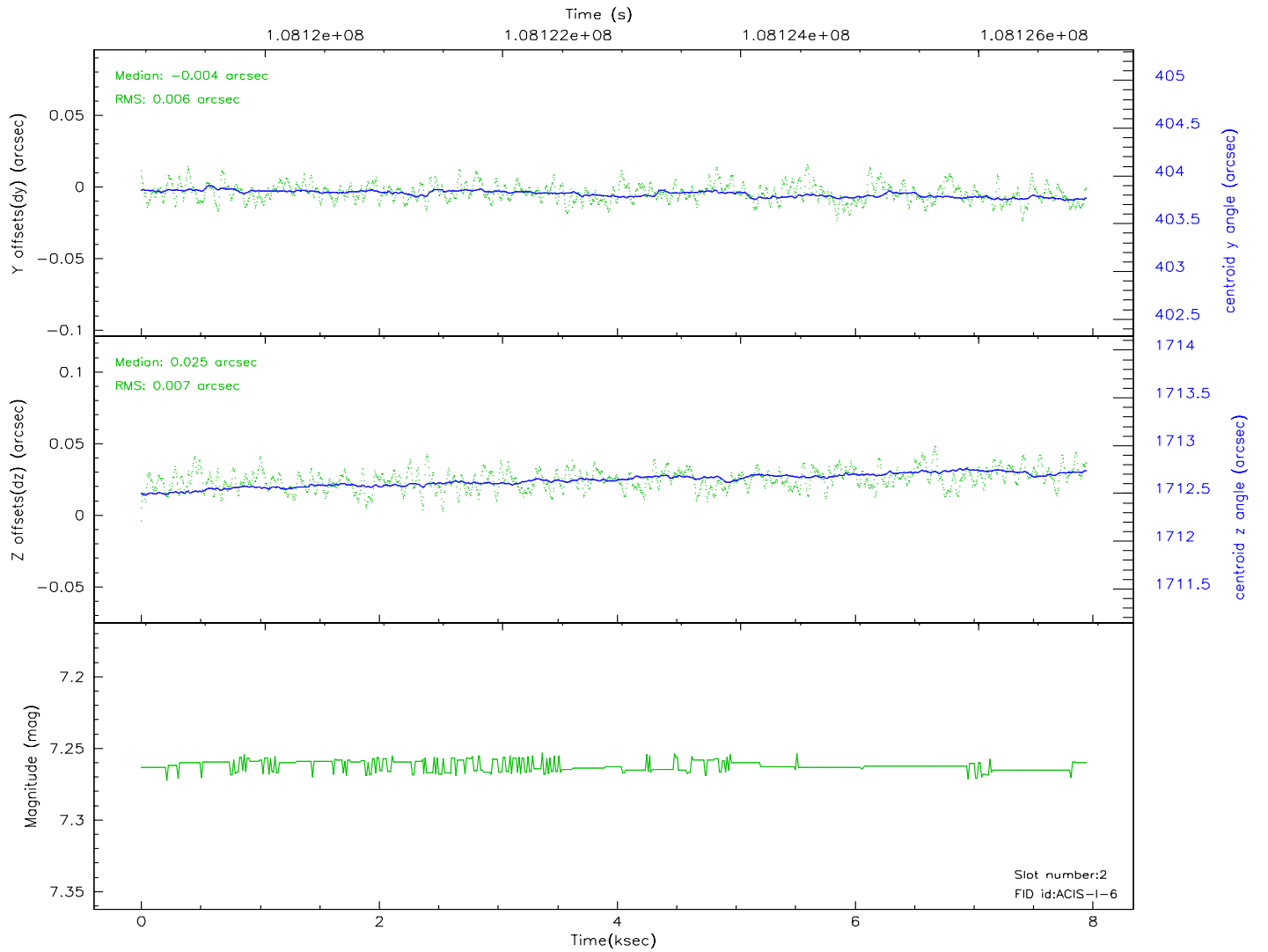
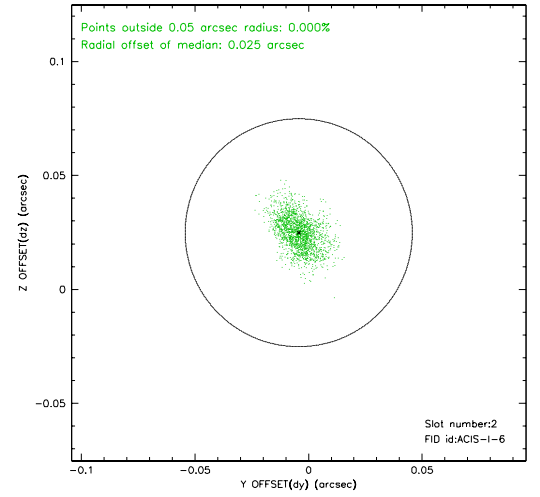
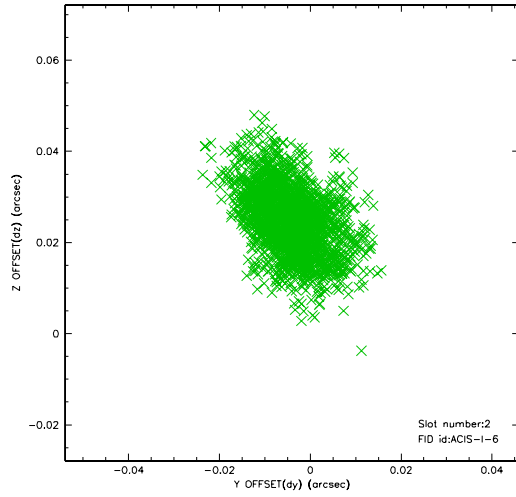
### 2.5.1 Slot 0



## 2.5.2 Slot 1

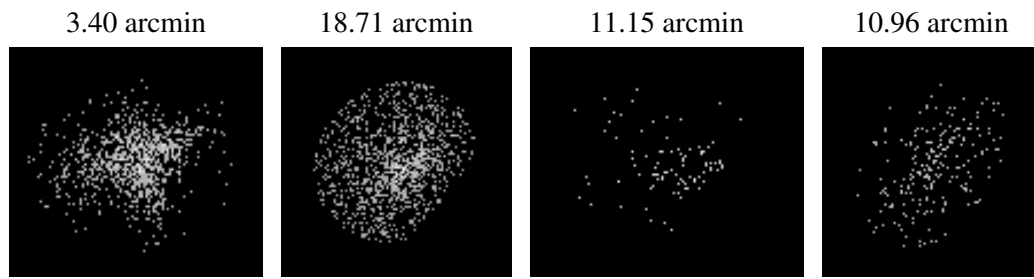


## 2.5.3 Slot 2





### 3 Point Sources



## A Summary

### A.1 Status

V&V Scientist	Beth Sundheim
V&V Date (YYYY-MM-DD)	2006.11.27
V&V Edition	1
V&V Disposition and Status	OK
V&V Charge Time	7.516

### A.2 Comments

Window constraint OK.