

V&V Reference Report

L2 ASCDS Version : 7.6.9

Observation 1532 - L2 Version 001
Chandra X-Ray Center

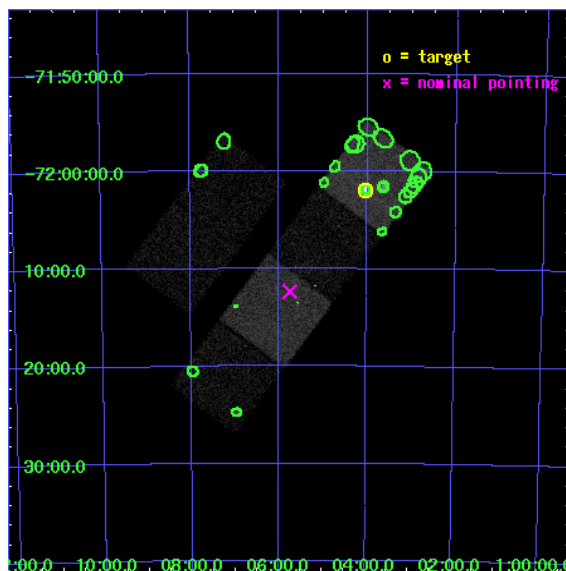
L2 Processing Date : Nov 25 2006

Contents

1	Front	2
2	OBI	3
2.1	OBI	3
2.1.1	Images	3
2.1.2	Bias	3
2.1.3	Parameters	4
2.1.4	Events	4
2.2	Compared Parameters	5
2.3	Aspect	6
2.4	Star Slots	9
2.4.1	Slot 3	9
2.4.2	Slot 4	10
2.4.3	Slot 5	11
2.4.4	Slot 6	12
2.4.5	Slot 7	13
2.5	FID Slots	14
2.5.1	Slot 0	14
2.5.2	Slot 1	15
2.5.3	Slot 2	16
3	Point Sources	17
A	Summary	18
A.1	Status	18
A.2	Comments	18

1 Front

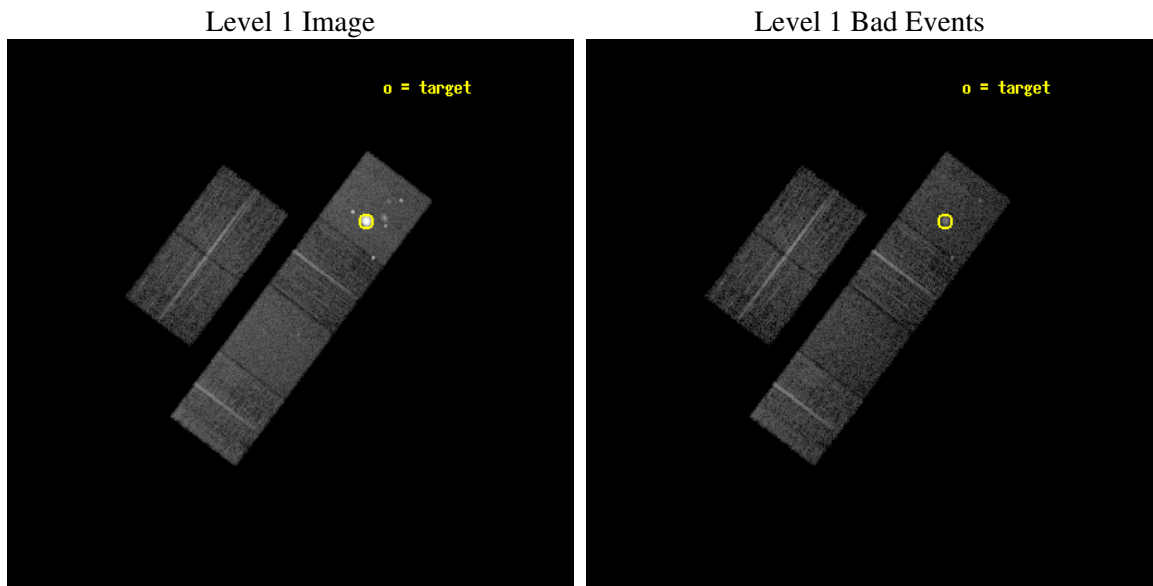
seq_num	590141
obs_id	1532
title	ACIS CALIBRATION OBSERVATION OF THE SUPERNOVA REMNANT E0102-72 (JUNE 2001)
observer	Dr. CXC Calibration
object	E0102-72.3 [Chip S1, T=120, Offsets=13,0,0]
dtcycle	0
cycle	P
ra_targ	16.01
dec_targ	-72.032028
ra_nom	16.435993051734
dec_nom	-72.205654803629
roll_nom	126.89487663575
revision	2
ontime	7513.6000069976
livetime	7418.4582795622
ontime2	7513.6000069976
ontime3	7513.6000069976
ontime5	7513.6000069976
ontime6	7513.6000069976
ontime7	7513.6000069976
ontime8	7510.3590467572
l2events	123672



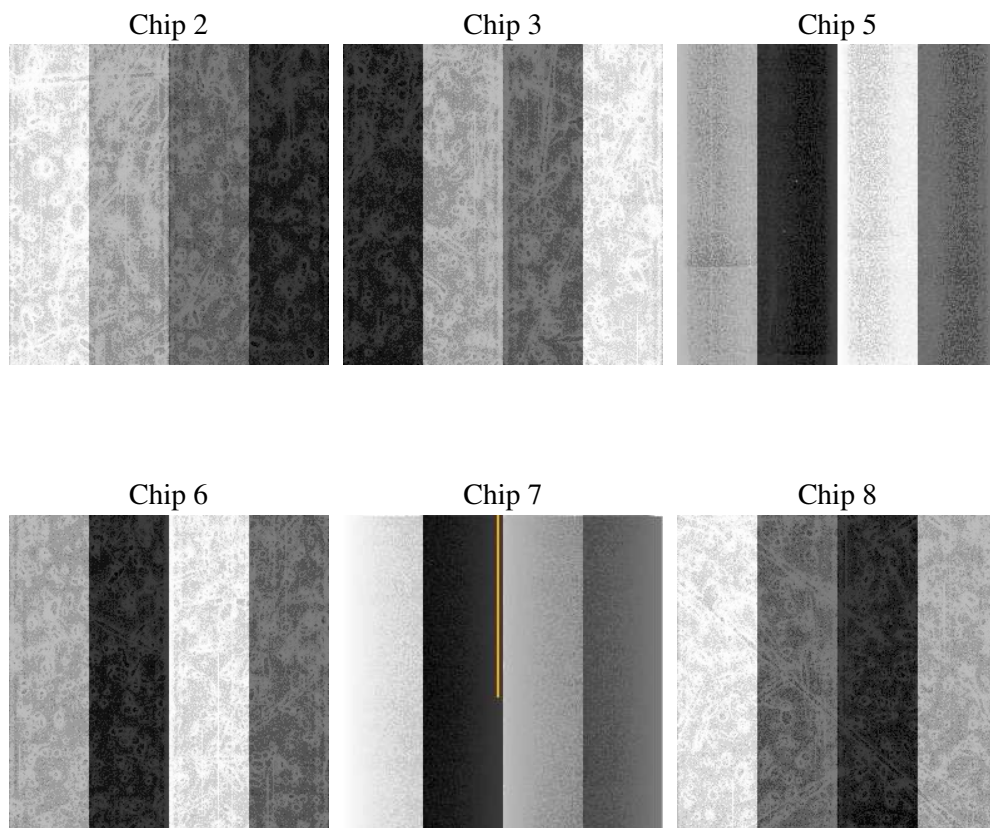
2 OBI

2.1 OBI

2.1.1 Images



2.1.2 Bias



2.1.3 Parameters

obi_num	0
ascdsver	7.6.9
caldsver	3.2.4
date	2006-11-25T08:13:31
revision	2

sched_exp_time	7755.000000
ontime	7519.117572695
ontime2	7519.117572695
ontime3	7519.117572695
ontime5	7519.117572695
ontime6	7519.1176026165
ontime7	7519.117572695
ontime8	7515.8764828593
l1events	409255

2.1.4 Events

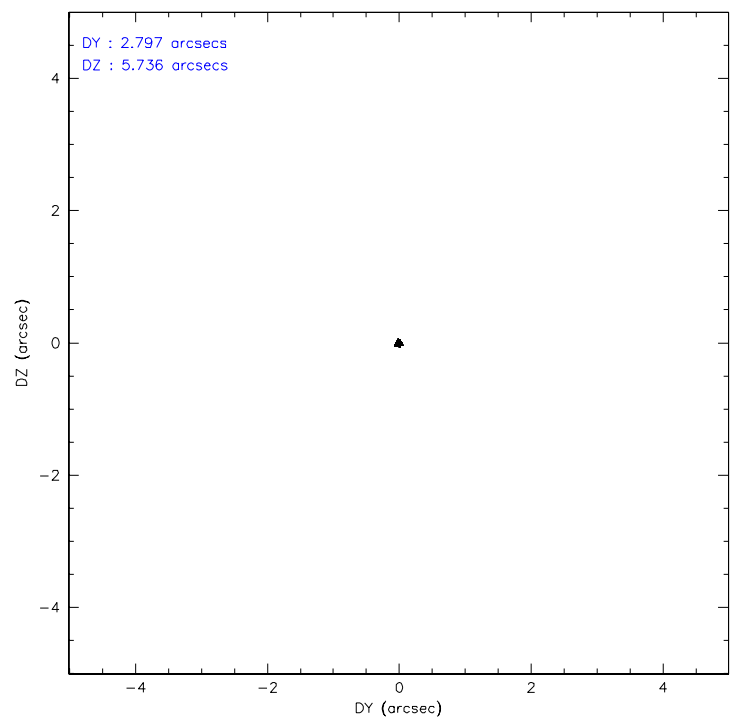
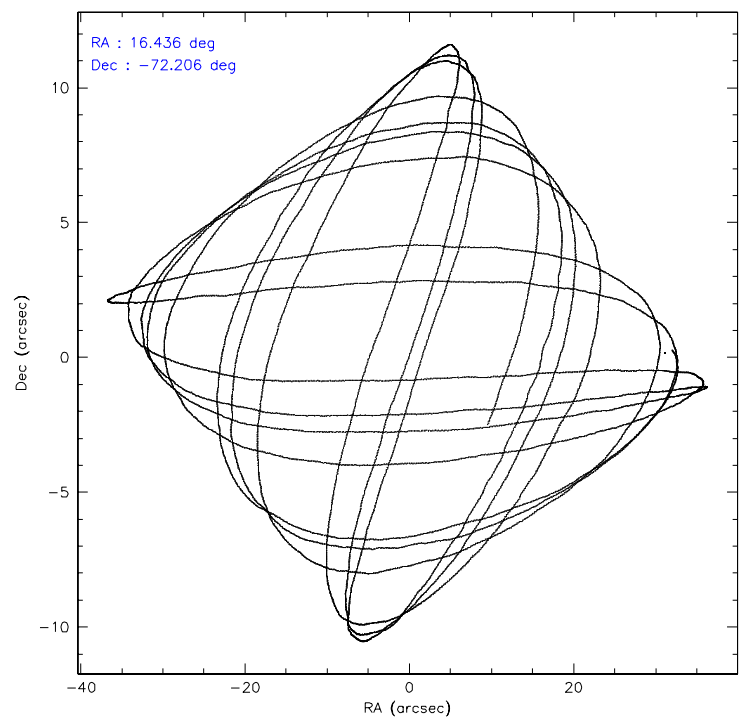
	ccd 2	ccd 3	ccd 5	ccd 6	ccd 7	ccd 8
level 1 events	53264	49615	124721	51043	63670	66942
rejected events	47541	44085	40064	44469	38991	53512
rejected %	89%	88%	32%	87%	61%	79%

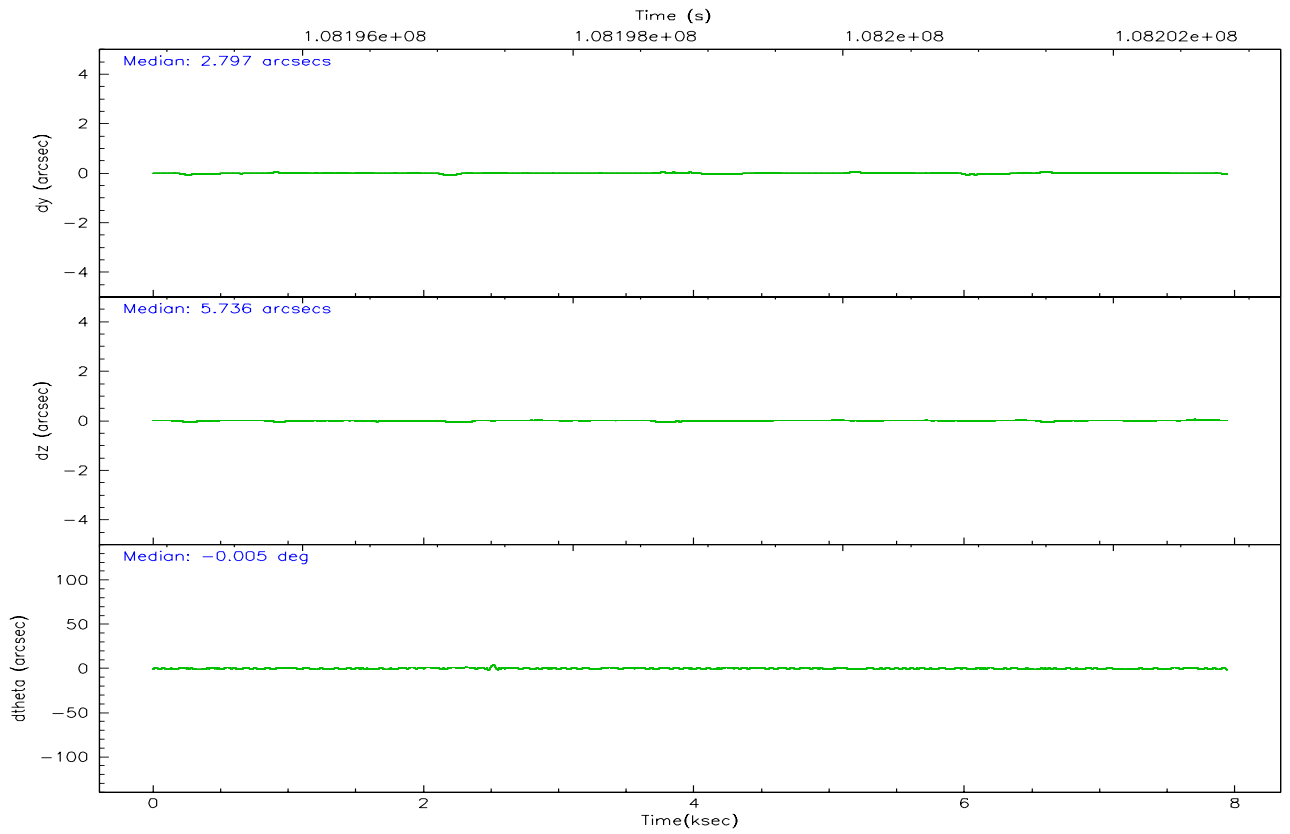
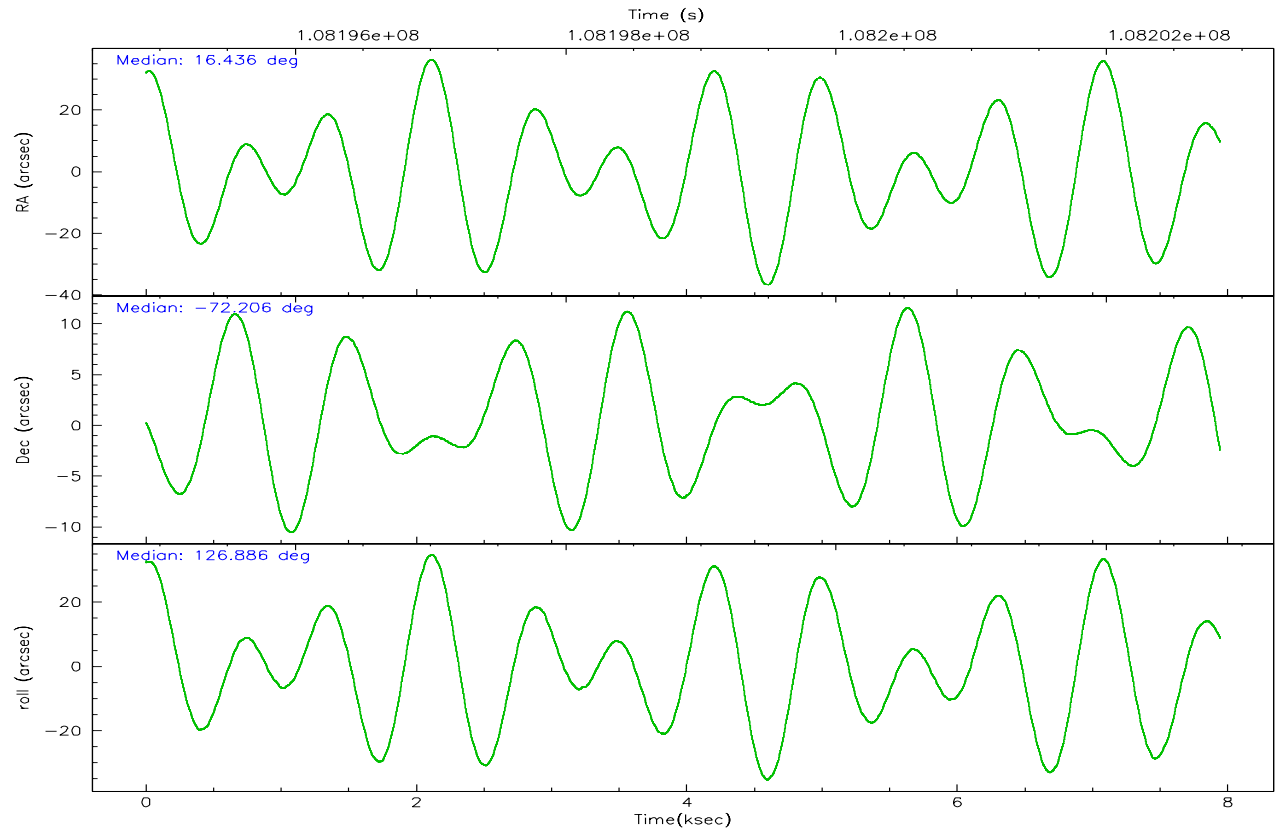
	ccd 2	ccd 3	ccd 5	ccd 6	ccd 7	ccd 8
grade 0 events	2437	2373	27192	3125	1710	4289
	4%	4%	21%	6%	2%	6%
grade 1 events	23	21	243	30	44	49
	0%	0%	0%	0%	0%	0%
grade 2 events	1188	1118	24930	1123	6114	2812
	2%	2%	19%	2%	9%	4%
grade 3 events	553	509	5146	630	1296	1444
	1%	1%	4%	1%	2%	2%
grade 4 events	549	545	5424	581	1307	1359
	1%	1%	4%	1%	2%	2%
grade 5 events	1709	1822	4039	2093	4238	2487
	3%	3%	3%	4%	6%	3%
grade 6 events	1003	989	22037	1122	14277	3546
	1%	1%	17%	2%	22%	5%
grade 7 events	45802	42238	35710	42339	34684	50956
	85%	85%	28%	82%	54%	76%

2.2 Compared Parameters

Parameter	Planned	Actual	Parameter	Planned	Actual
Instrument	ACIS	ACIS	Obspar format version number	6	6
Detector	ACIS-235678	ACIS-235678	Obspar file type	PREDICTED	ACTUAL
Grating	NONE	NONE	Obspar update status	NONE	UPDATED
Data mode	FAINT	FAINT	Number of optional ACIS chips dropped	0	0
Observation mode	POINTING	POINTING	On-chip summing requested	N	N
Pointing RA	16.518475	16.43599305173353	Subarray requested	NONE	NONE
Pointing Dec	-72.216095	-72.20565480362924	Alternating exposures requested	N	N
Pointing Roll	126.816785	126.8948766357548	Primary exposure time	0.000000	3.2
Window start time	107740864.184000	107740864.184000			
Window stop time	110246464.184000	110246464.184000			
SIM focus pos (mm)	-0.684267	-0.6828225247311905			
SIM defocus (mm)	0	0.001444936568705701			
SIM translation stage pos (mm)	-190.132523	-190.1425803651734			
SIM translation stage offset (mm)	0	0.01005778216563158			
Observation start time	108195086.184000	108194710.07329			
Observation start date	2001-06-06T06:10:22	2001-06-06T06:05:10			
Observation end time	108202841.184000	108202974.64861			
Observation end date	2001-06-06T08:19:37	2001-06-06T08:22:54			
Read mode	TIMED	TIMED			

2.3 Aspect



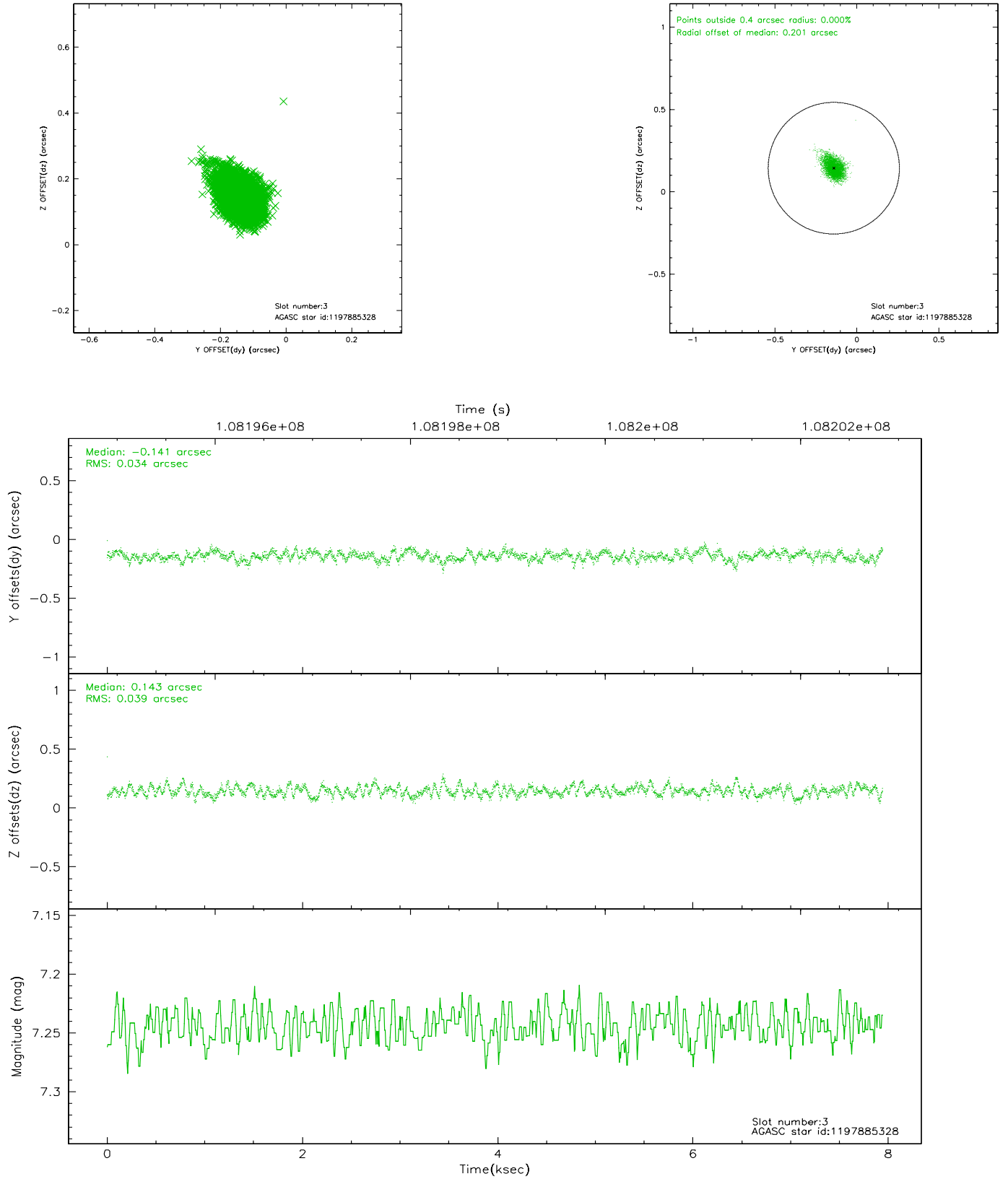


Slot Statistics

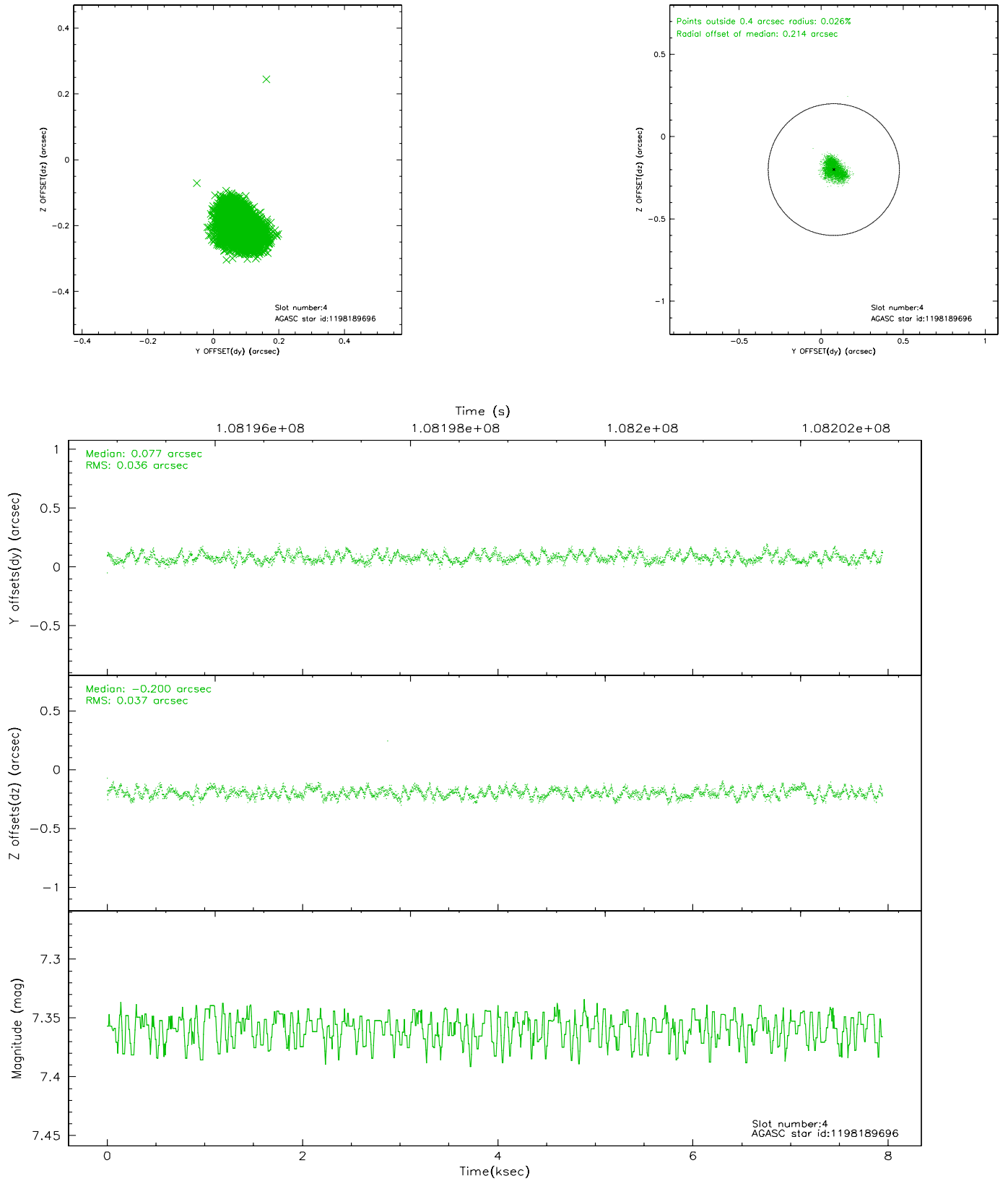
slot	status	id	mag	n_pts	med_dy	med_dz	dr1	dr2	ra	dec	mean_y	mean_z
0	FID	ACIS-S-2	7.11	1938	0.019	0.018	0.005	0.009	0.000000	0.000000	-755.37	-1726.81
1	FID	ACIS-S-4	7.20	1937	-0.062	-0.005	0.006	0.009	0.000000	0.000000	2157.46	180.98
2	FID	ACIS-S-6	7.35	1937	0.015	-0.005	0.007	0.011	0.000000	0.000000	407.46	819.14
3	GUIDE	1197885328	7.24	3875	-0.141	0.143	0.054	0.089	16.283090	-71.733943	1548.90	-826.92
4	GUIDE	1198189696	7.36	3875	0.077	-0.200	0.056	0.085	15.223750	-72.697522	-568.03	2156.84
5	GUIDE	1197884536	8.49	3875	-0.029	0.100	0.057	0.094	17.160729	-71.835289	663.15	-1395.41
6	GUIDE	1197884712	8.30	3876	0.052	-0.061	0.053	0.084	16.087398	-72.252690	177.42	458.36
7	GUIDE	1198283128	7.58	3875	0.038	0.010	0.056	0.089	17.272580	-72.642428	-1717.43	274.39

2.4 Star Slots

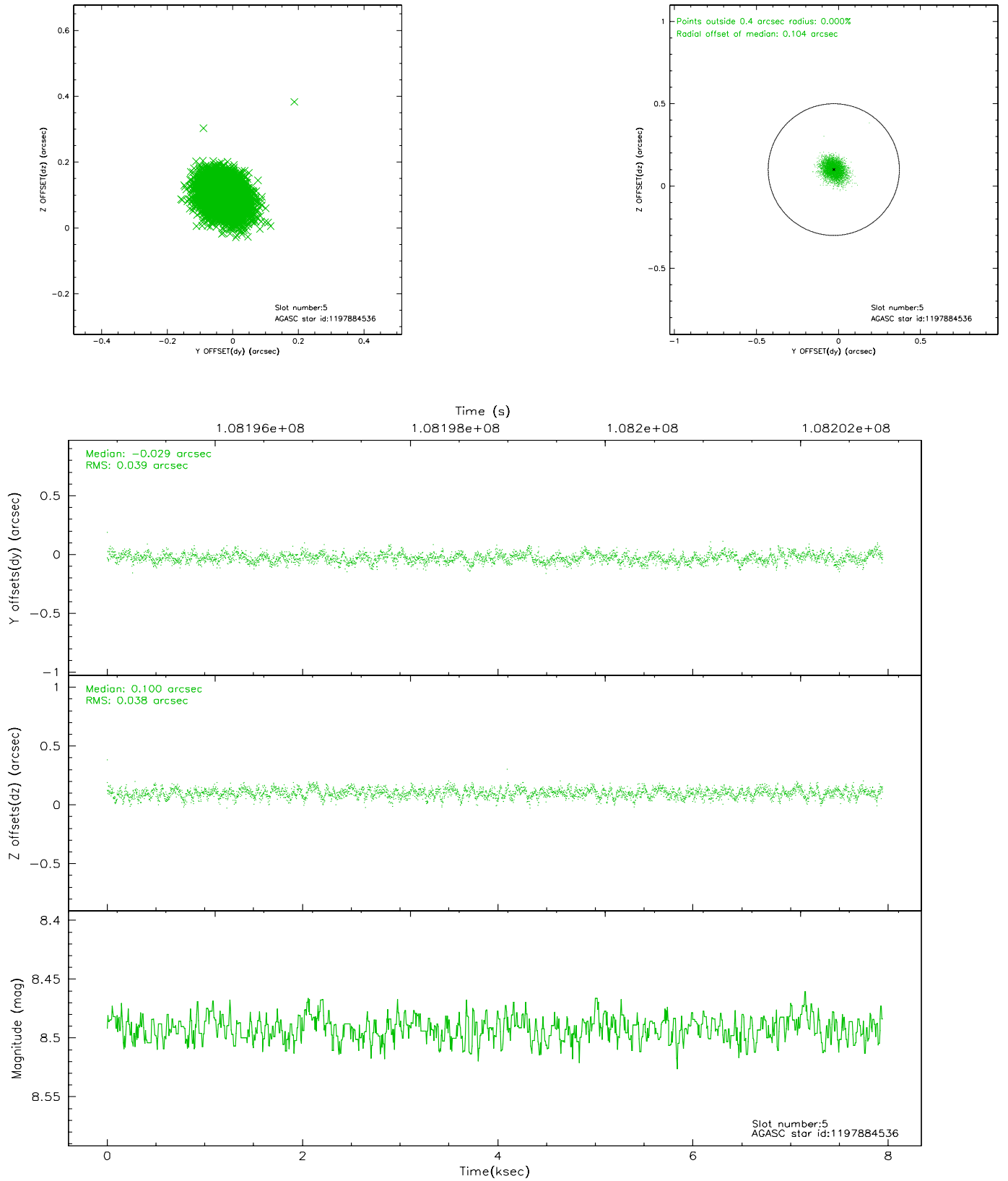
2.4.1 Slot 3



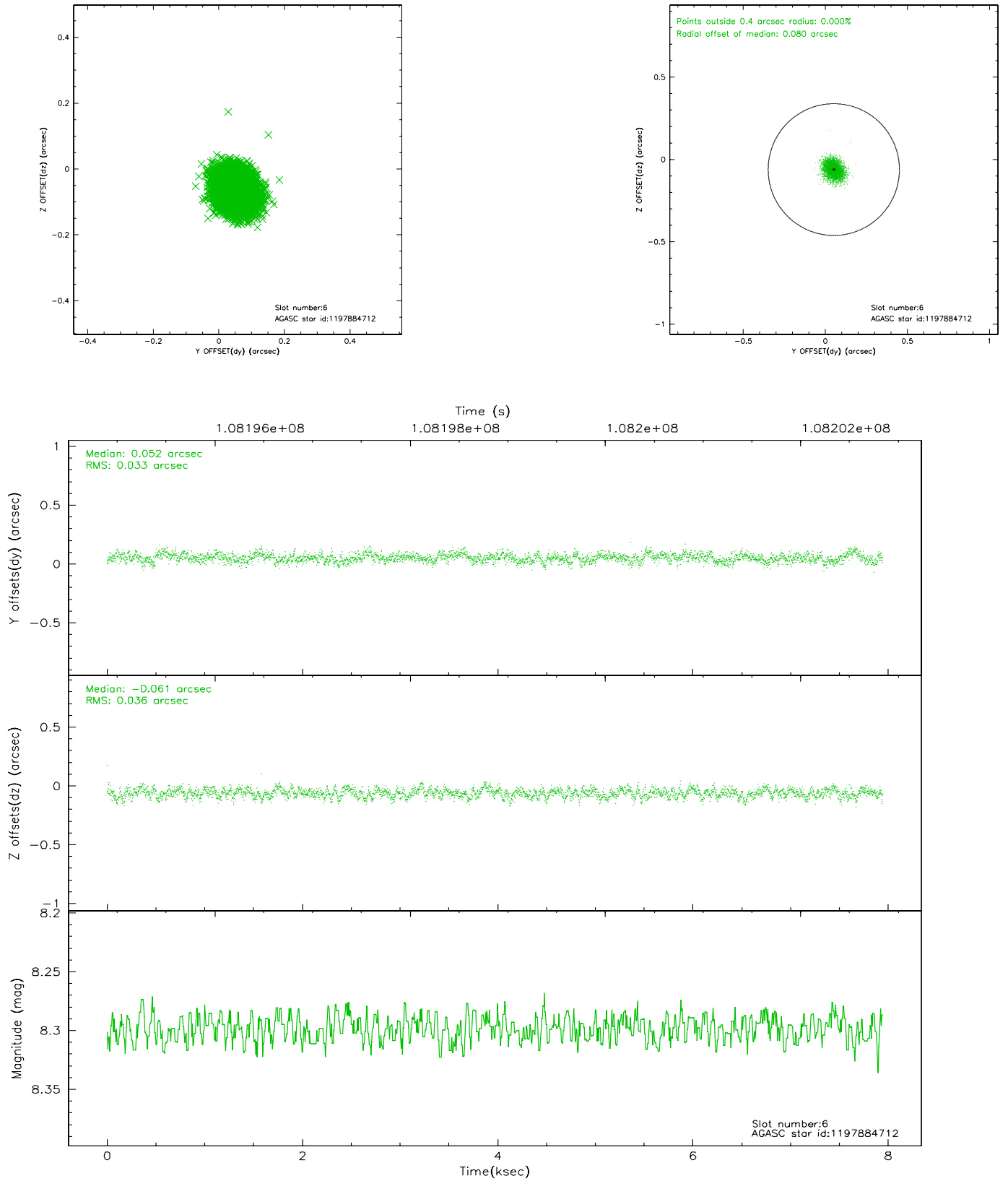
2.4.2 Slot 4



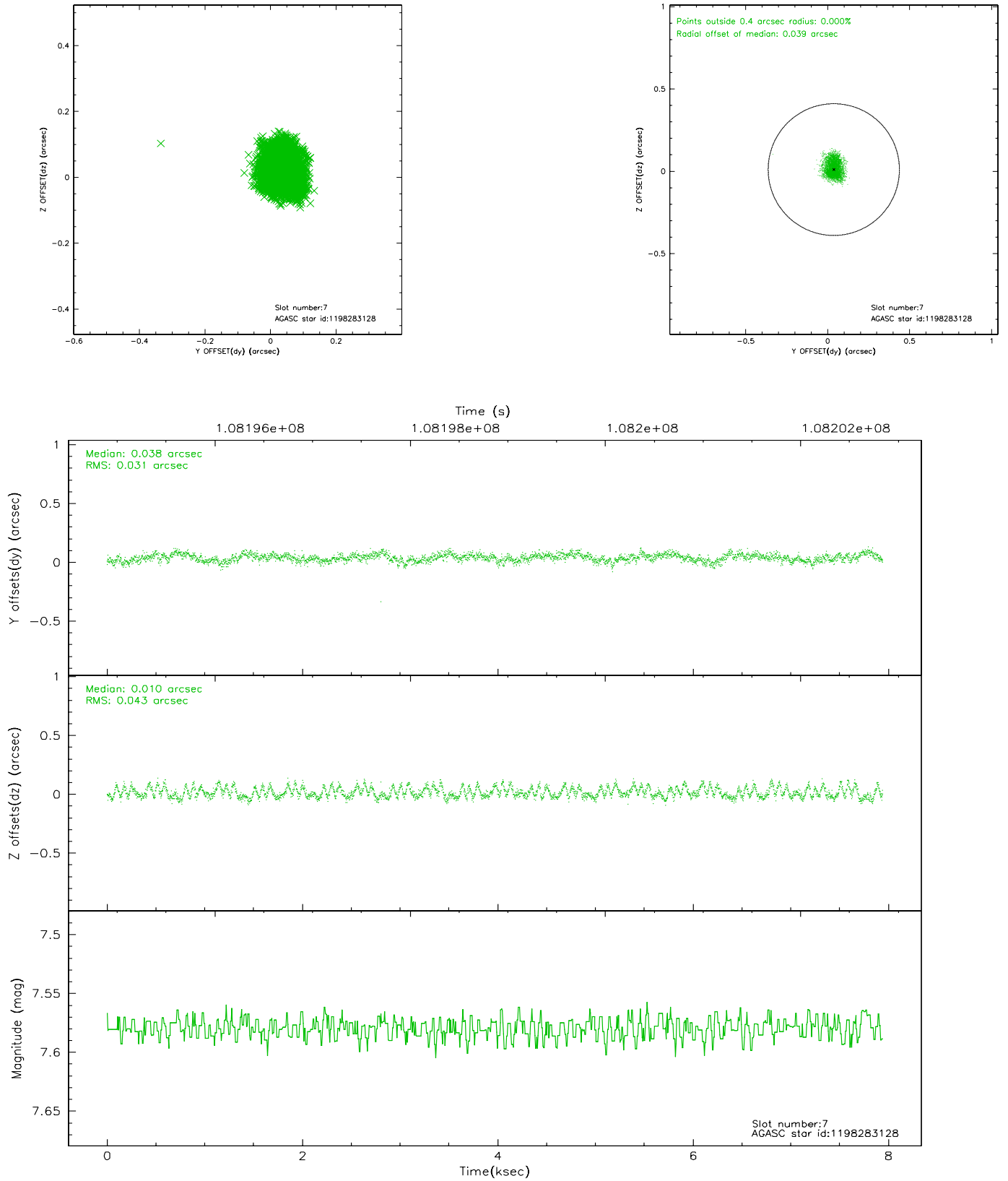
2.4.3 Slot 5



2.4.4 Slot 6

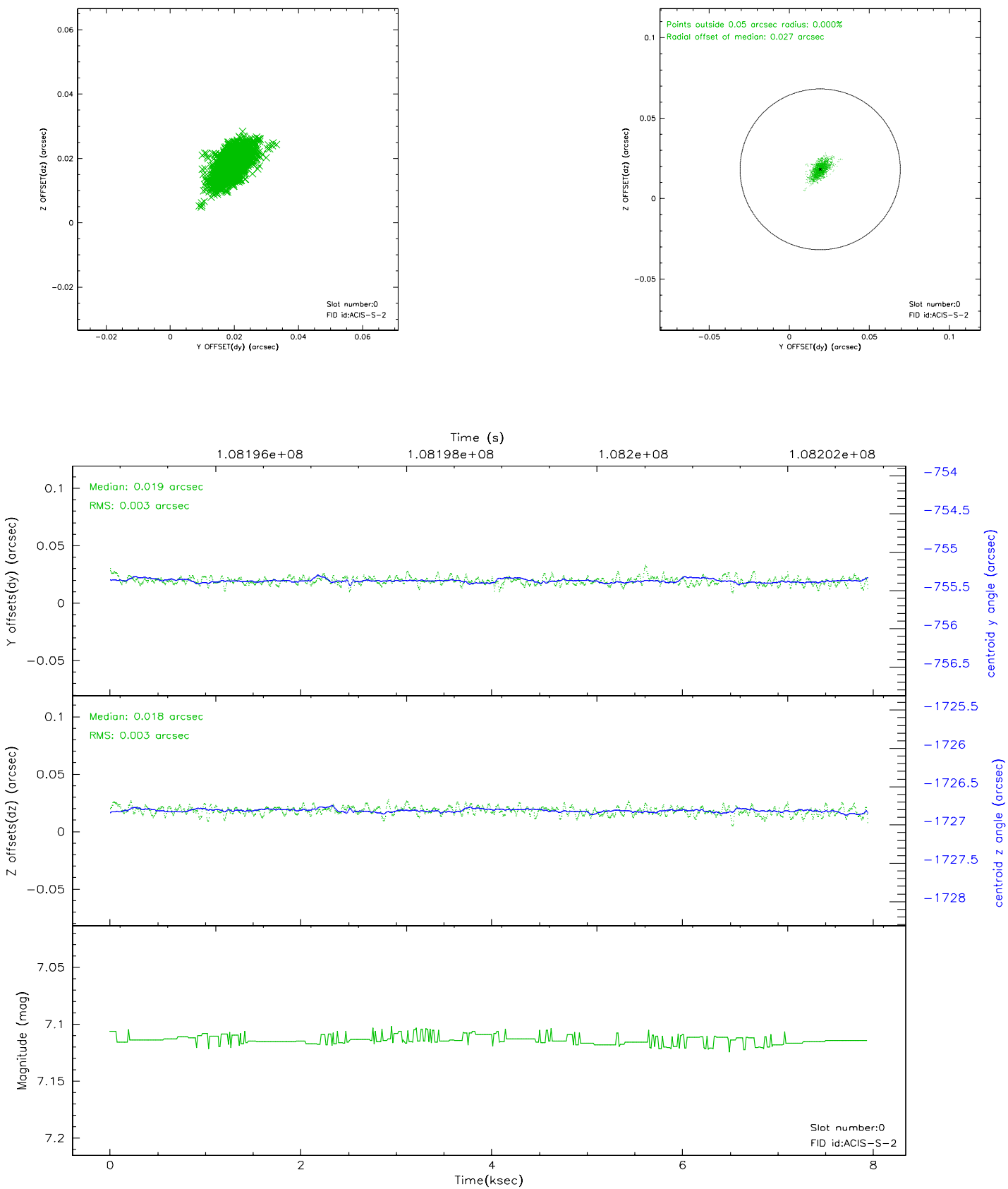


2.4.5 Slot 7

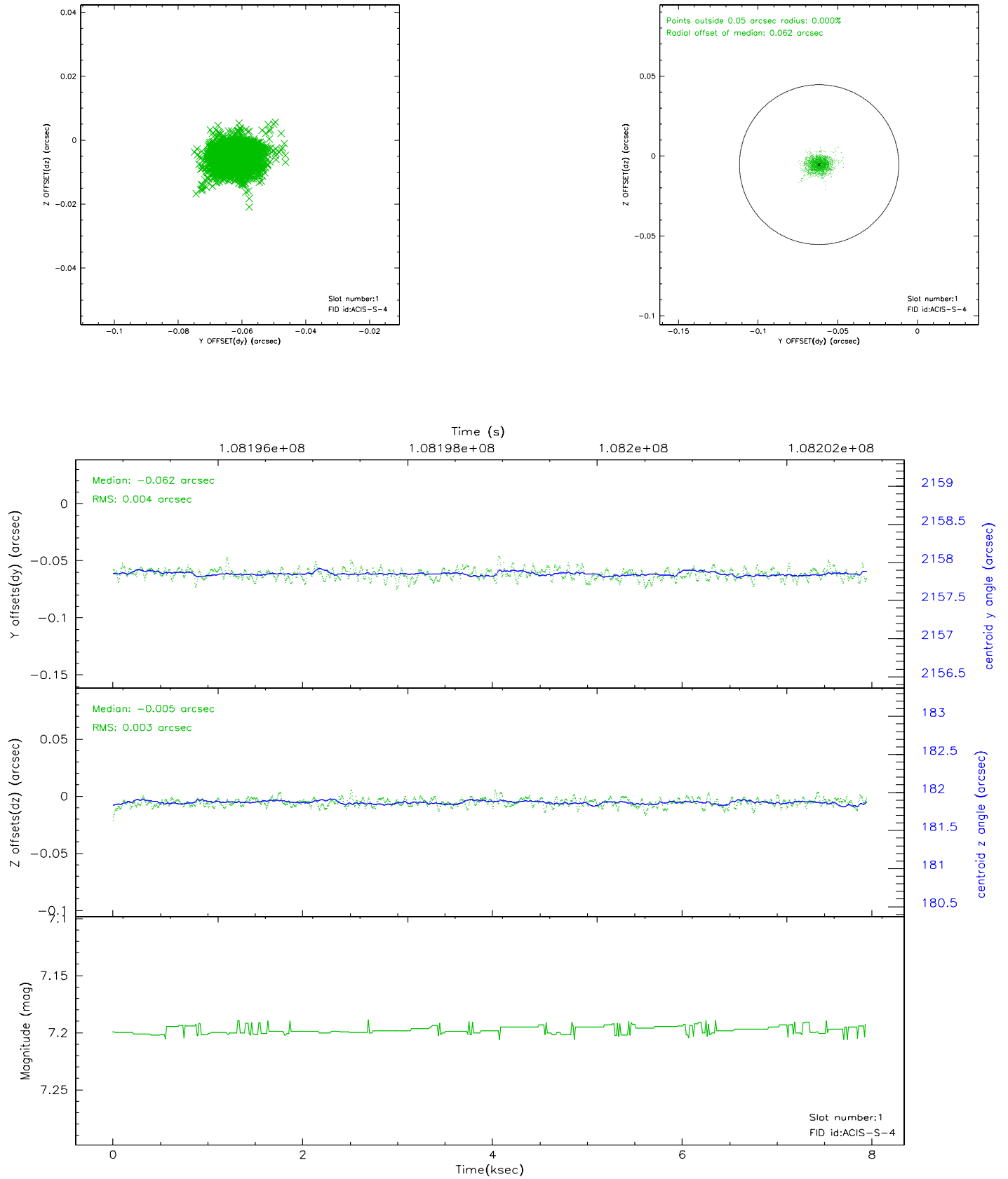


2.5 FID Slots

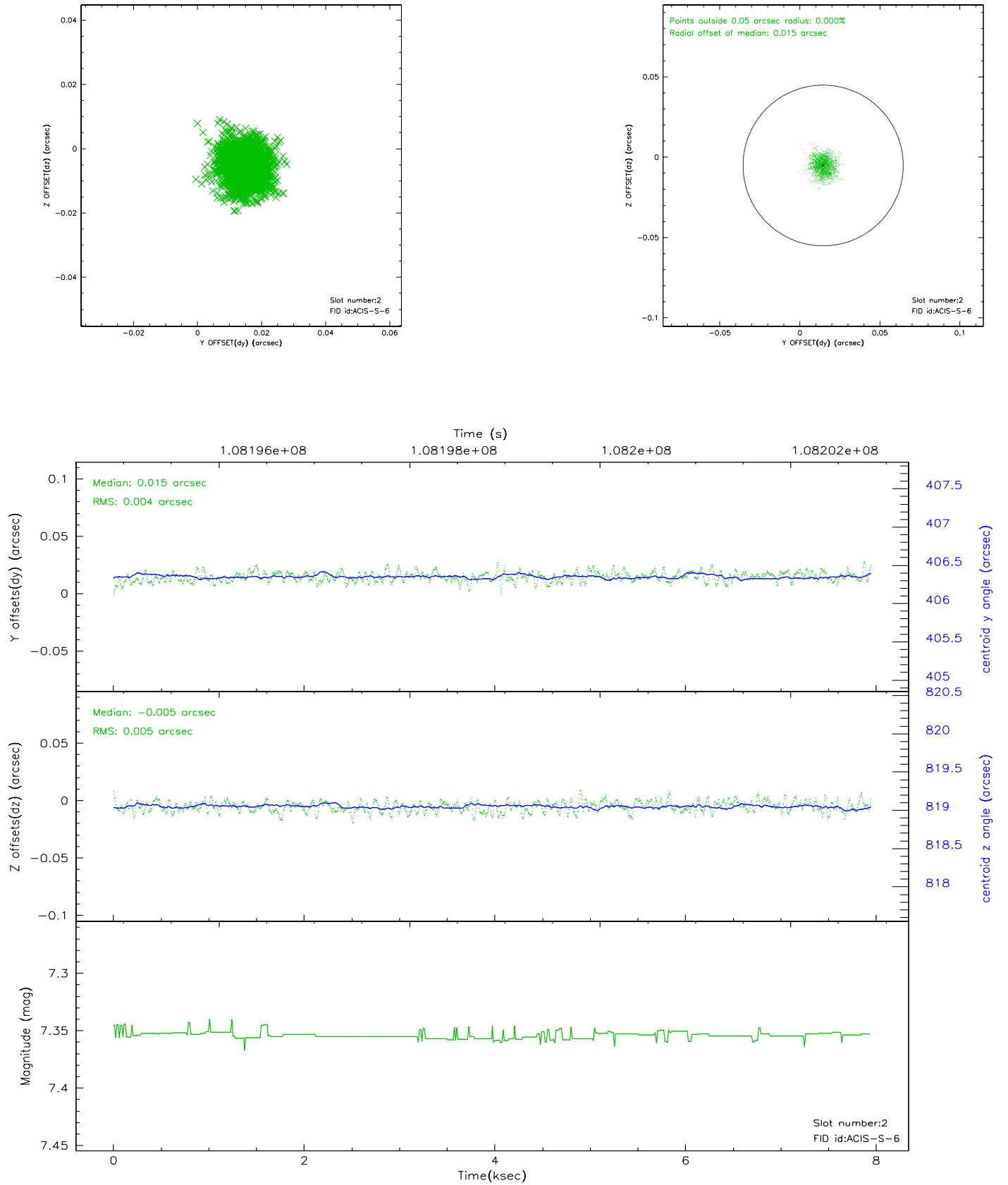
2.5.1 Slot 0



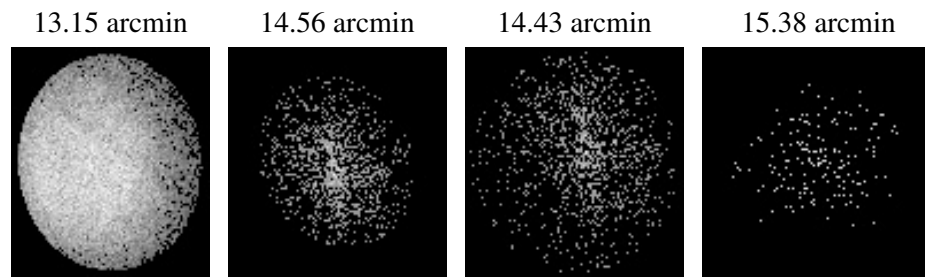
2.5.2 Slot 1



2.5.3 Slot 2



3 Point Sources



A Summary

A.1 Status

V&V Scientist	Beth Sundheim
V&V Date (YYYY-MM-DD)	2006.11.27
V&V Edition	1
V&V Disposition and Status	OK
V&V Charge Time	7.516

A.2 Comments

Window constraint OK.