

V&V Reference Report

L2 ASCDS Version : 7.6.11

Observation 1315 - L2 Version 2
Chandra X-Ray Center

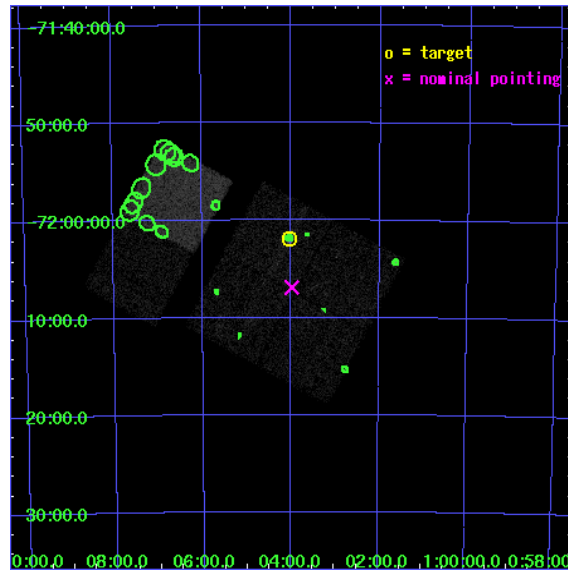
L2 Processing Date : Jul 13 2007

Contents

1	Front	2
2	OBI	3
2.1	OBI	3
2.1.1	Images	3
2.1.2	Bias	3
2.1.3	Parameters	4
2.1.4	Events	4
2.2	Compared Parameters	5
2.3	Aspect	6
2.4	Star Slots	9
2.4.1	Slot 3	9
2.4.2	Slot 4	10
2.4.3	Slot 5	11
2.4.4	Slot 6	12
2.4.5	Slot 7	13
2.5	FID Slots	14
2.5.1	Slot 0	14
2.5.2	Slot 1	15
2.5.3	Slot 2	16
3	Point Sources	17
A	Summary	18
A.1	Status	18
A.2	Comments	18

1 Front

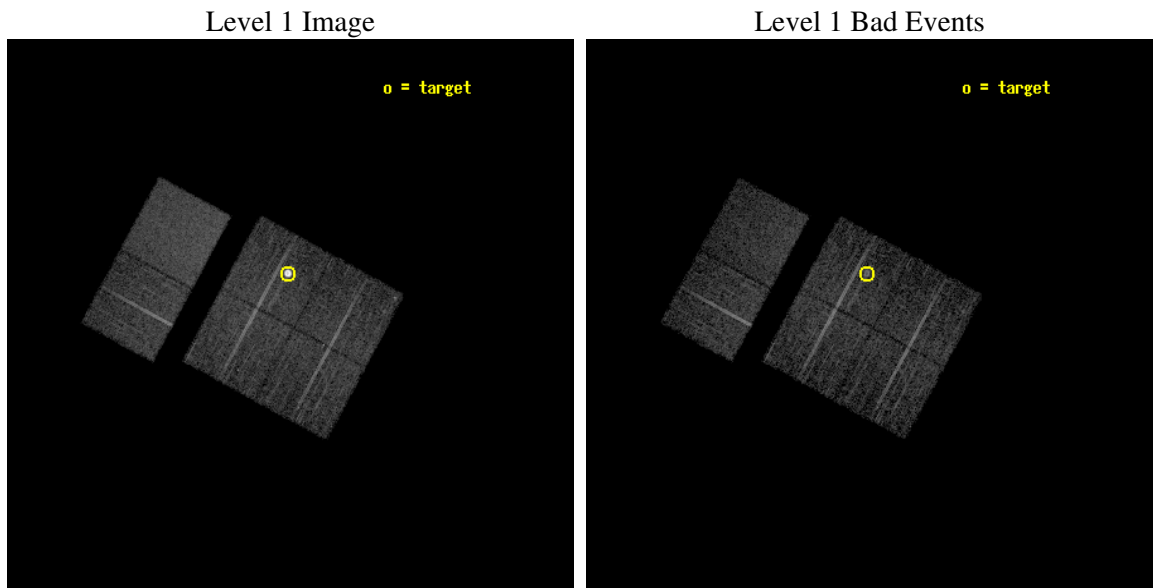
seq_num	590129
obs_id	1315
title	ACIS CALIBRATION OBSERVATION OF THE SUPERNOVA REMNANT E0102-72 (DEC 2000)
observer	Dr. CXC Calibration
object	E0102-72.3 [Chip I3, T=120, Offsets=-4,2,0]
dtcycle	0
cycle	P
ra_targ	16.01
dec_targ	-72.032028
ra_nom	15.99479010318
dec_nom	-72.115288278603
roll_nom	298.50636620034
revision	2
ontime	6956.800006479
livetime	6868.7088159149
ontime0	6956.800006479
ontime1	6956.800006479
ontime2	6956.800006479
ontime3	6956.800006479
ontime6	6956.800006479
ontime7	6956.800006479
l2events	66565



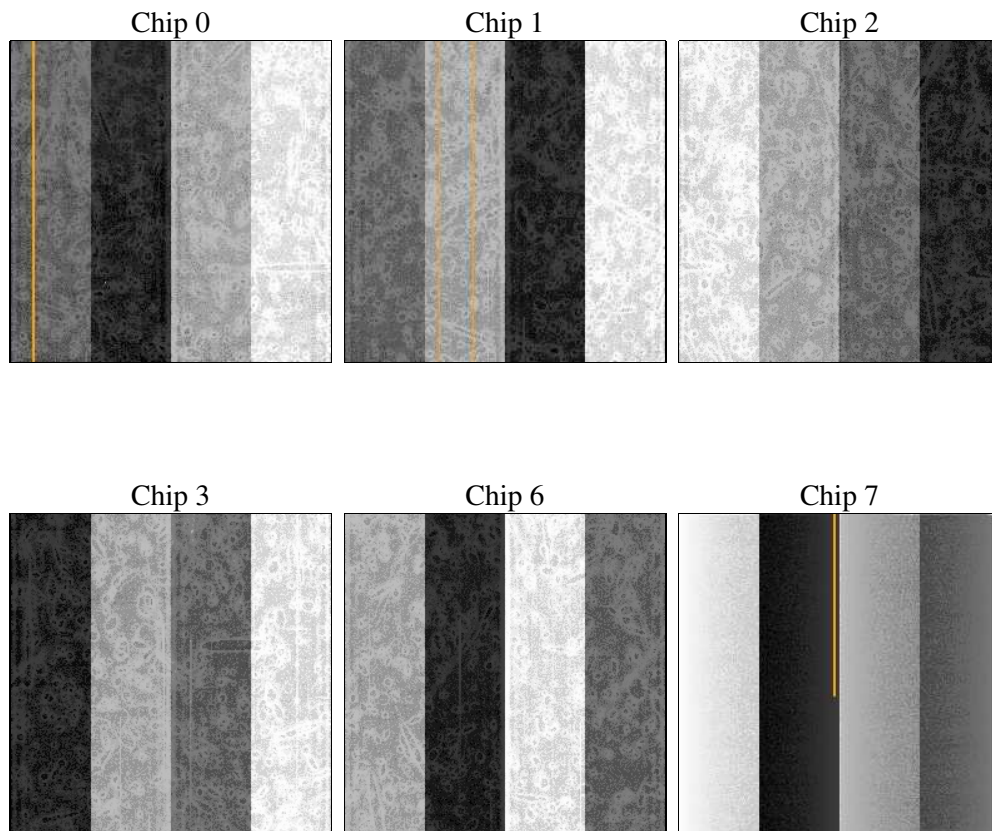
2 OBI

2.1 OBI

2.1.1 Images



2.1.2 Bias



2.1.3 Parameters

obi_num	0
ascdsver	7.6.11
caldsver	3.4.0
date	2007-07-13T16:57:16
revision	2

sched_exp_time	7200.000000
ontime	6956.800006479
ontime0	6956.800006479
ontime1	6956.800006479
ontime2	6956.800006479
ontime3	6956.800006479
ontime6	6956.800006479
ontime7	6956.800006479
llevents	279434

2.1.4 Events

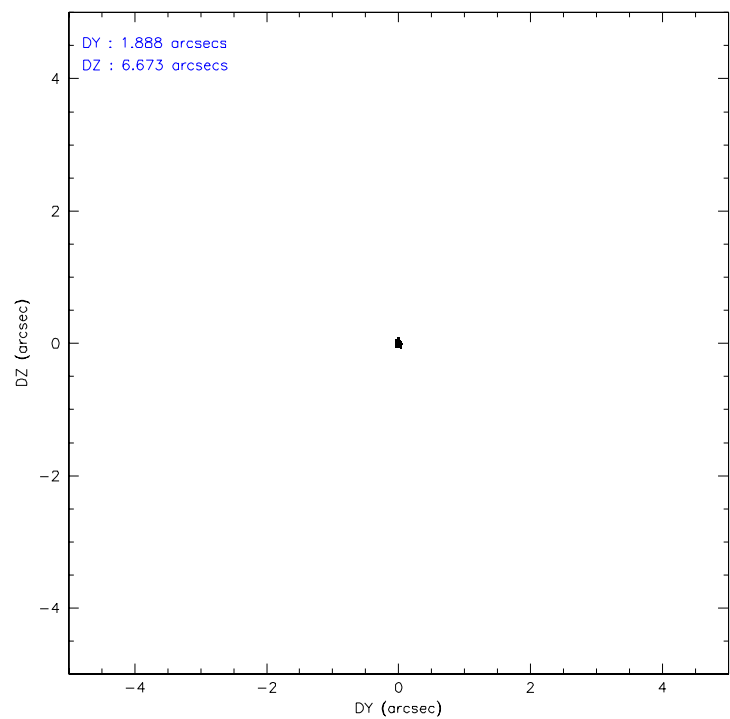
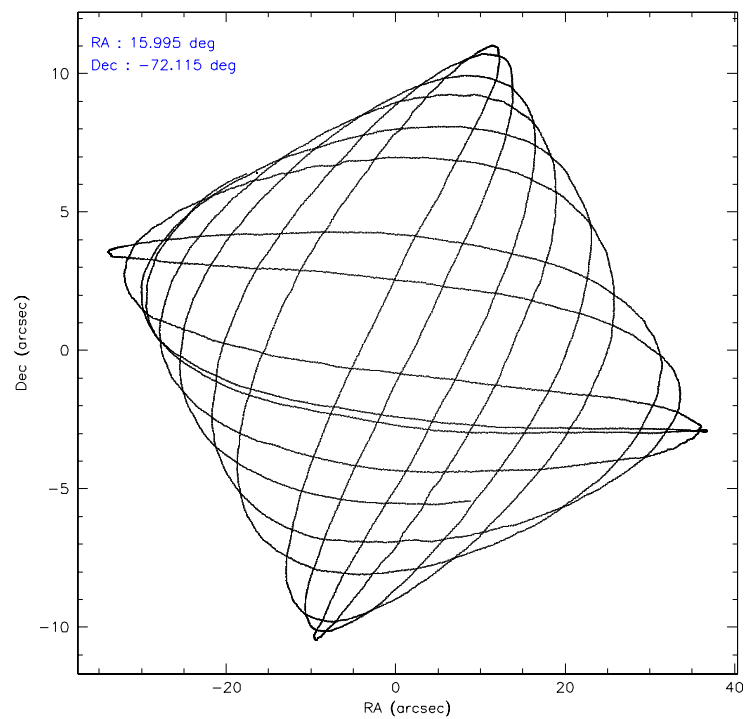
	ccd 0	ccd 1	ccd 2	ccd 3	ccd 6	ccd 7
level 1 events	37874	37387	42677	66505	41840	53151
rejected events	32698	32075	37290	36752	37064	31493
rejected %	86%	85%	87%	55%	88%	59%

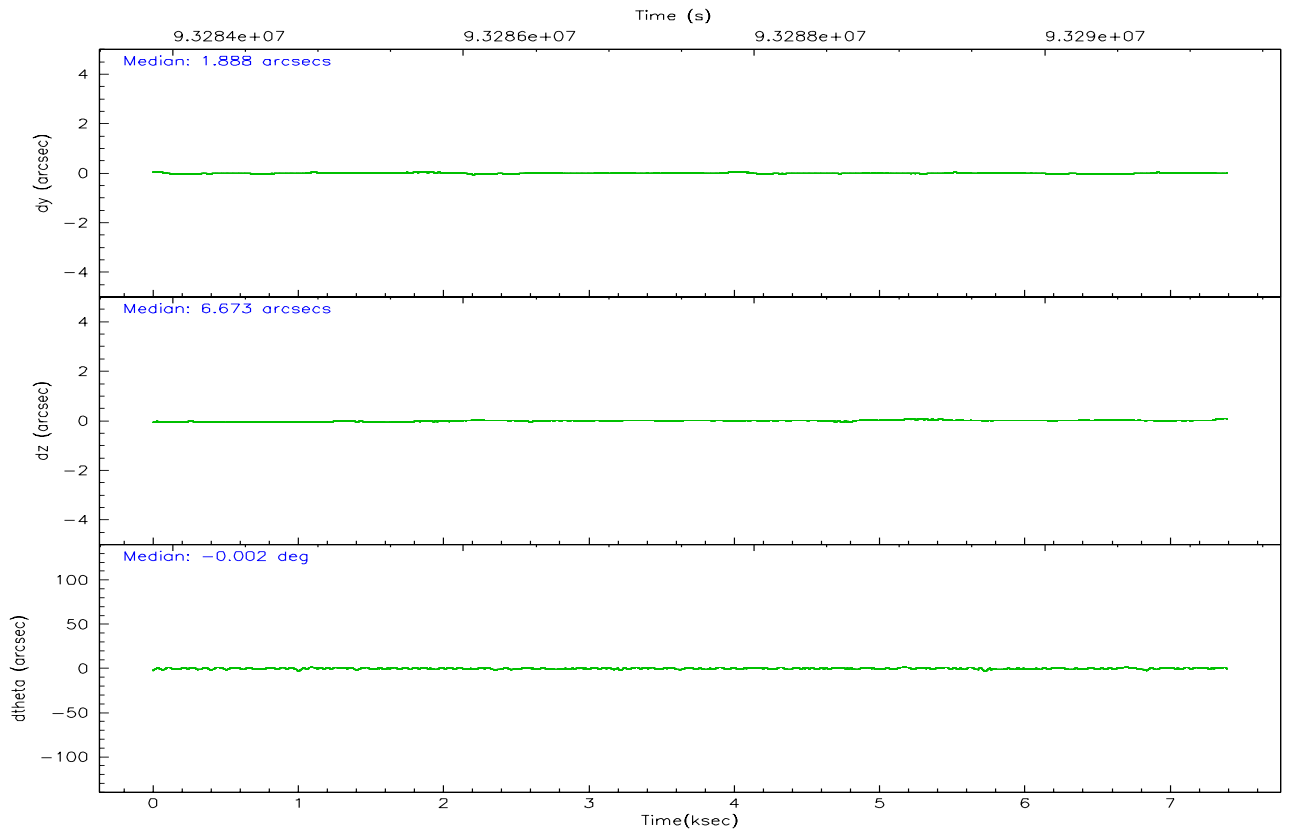
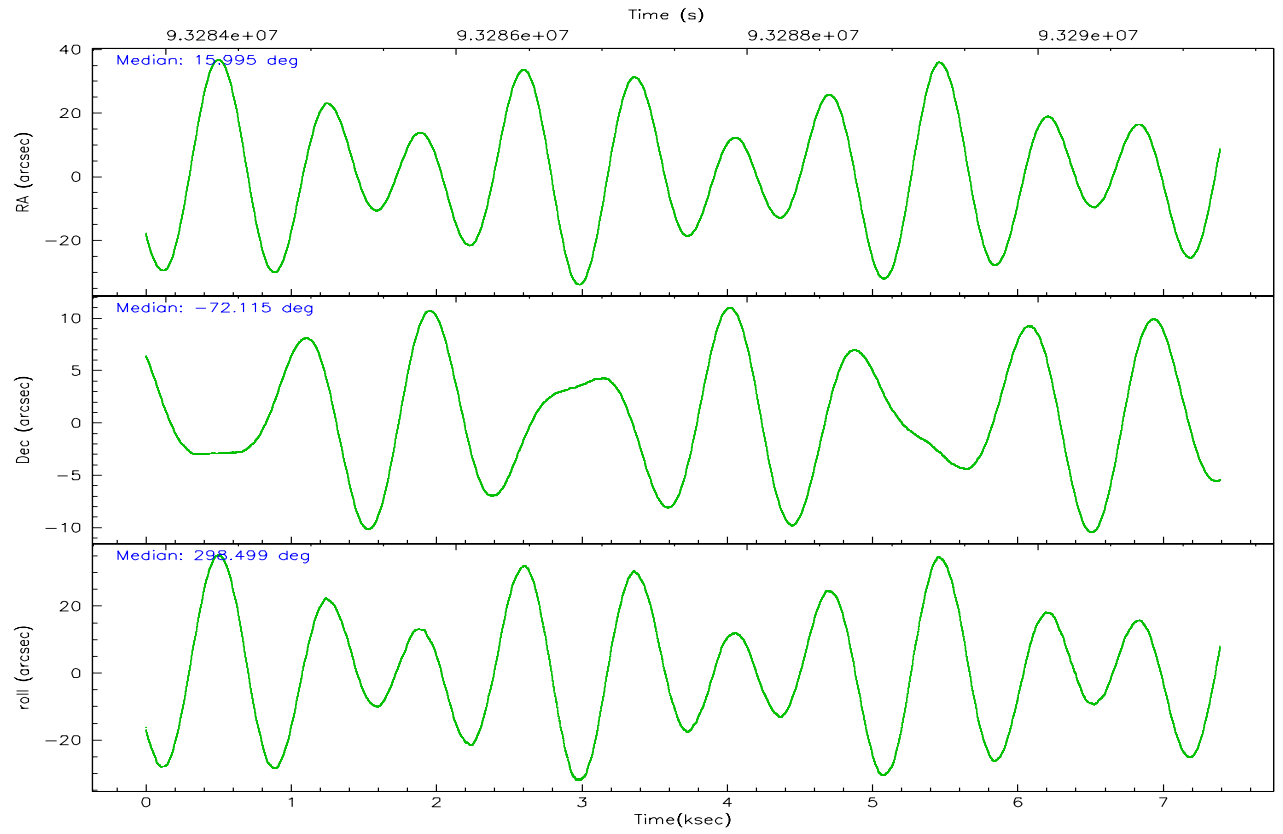
	ccd 0	ccd 1	ccd 2	ccd 3	ccd 6	ccd 7
grade 0 events	2421	2348	2624	24397	1941	2111
	6%	6%	6%	36%	4%	3%
grade 1 events	19	21	17	230	20	55
	0%	0%	0%	0%	0%	0%
grade 2 events	1041	1031	1031	2723	920	4213
	2%	2%	2%	4%	2%	7%
grade 3 events	473	504	475	854	475	1993
	1%	1%	1%	1%	1%	3%
grade 4 events	450	553	482	852	489	1937
	1%	1%	1%	1%	1%	3%
grade 5 events	1406	1529	1434	1701	1742	5075
	3%	4%	3%	2%	4%	9%
grade 6 events	798	881	779	953	955	11434
	2%	2%	1%	1%	2%	21%
grade 7 events	31266	30520	35835	34795	35298	26333
	82%	81%	83%	52%	84%	49%

2.2 Compared Parameters

Parameter	Planned	Actual	Parameter	Planned	Actual
Instrument	ACIS	ACIS	Obspar format version number	6	6
Detector	ACIS-012367	ACIS-012367	Obspar file type	PREDICTED	ACTUAL
Grating	NONE	NONE	Obspar update status	NONE	UPDATED
Data mode	FAINT	FAINT	Number of optional ACIS chips dropped	0	0
Observation mode	POINTING	POINTING	On-chip summing requested	N	N
Pointing RA	15.918832	15.99479010317967	Subarray requested	NONE	NONE
Pointing Dec	-72.100855	-72.11528827860265	Alternating exposures requested	N	N
Pointing Roll	298.225396	298.5063662003416	Primary exposure time	0.000000	3.2
Window start time	92016064.184000	92016064.184000			
Window stop time	94608064.184000	94608064.184000			
SIM focus pos (mm)	-0.782348	-0.7809083437167272			
SIM defocus (mm)	0	0.001439871863259334			
SIM translation stage pos (mm)	-233.592463	-233.5874344608287			
SIM translation stage offset (mm)	0	-0.005018542100998502			
Observation start time	93284057.184000	93283681.897285			
Observation start date	2000-12-15T16:13:13	2000-12-15T16:08:01			
Observation end time	93291257.184000	93291391.43508001			
Observation end date	2000-12-15T18:13:13	2000-12-15T18:16:31			
Read mode	TIMED	TIMED			

2.3 Aspect



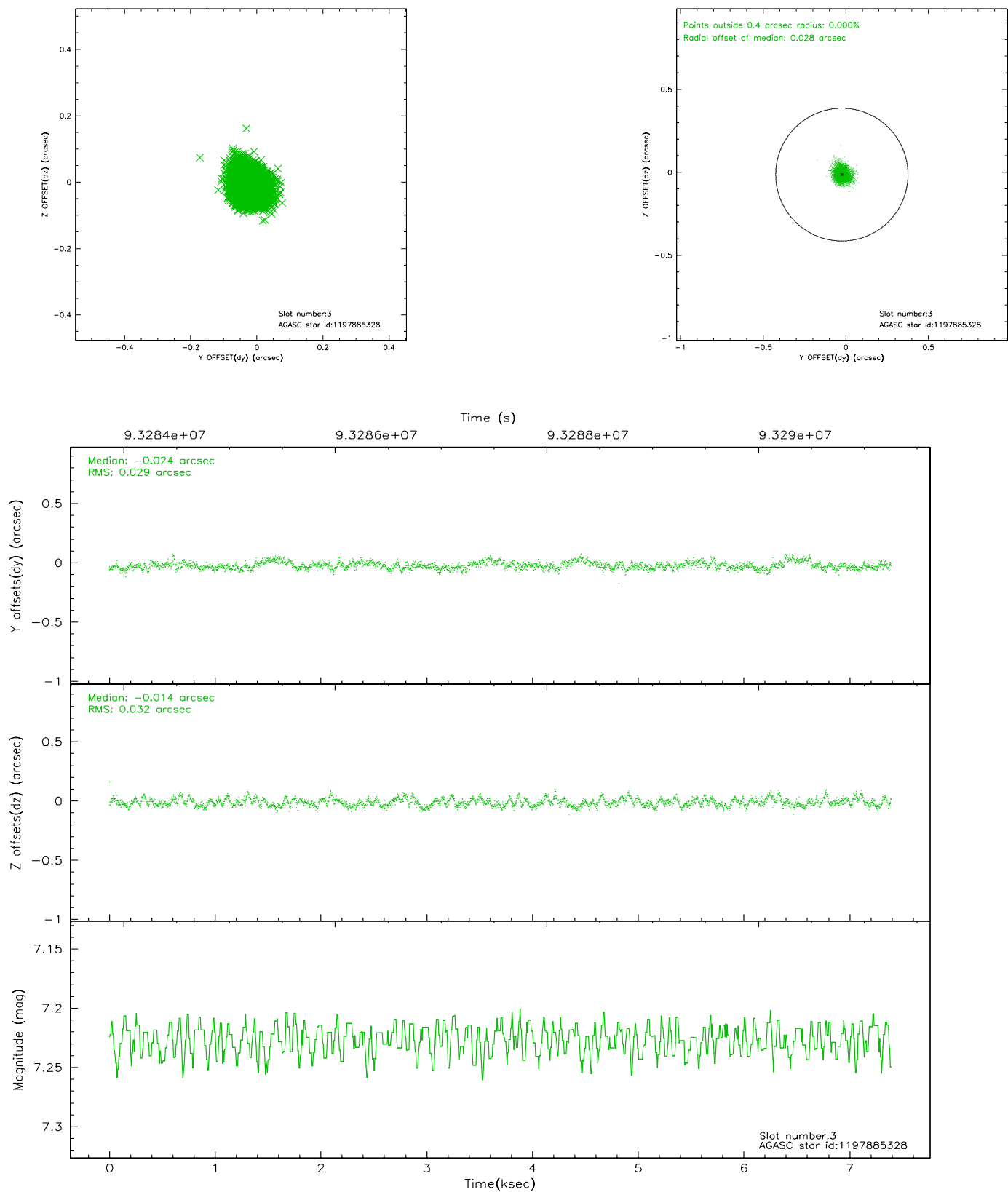


Slot Statistics

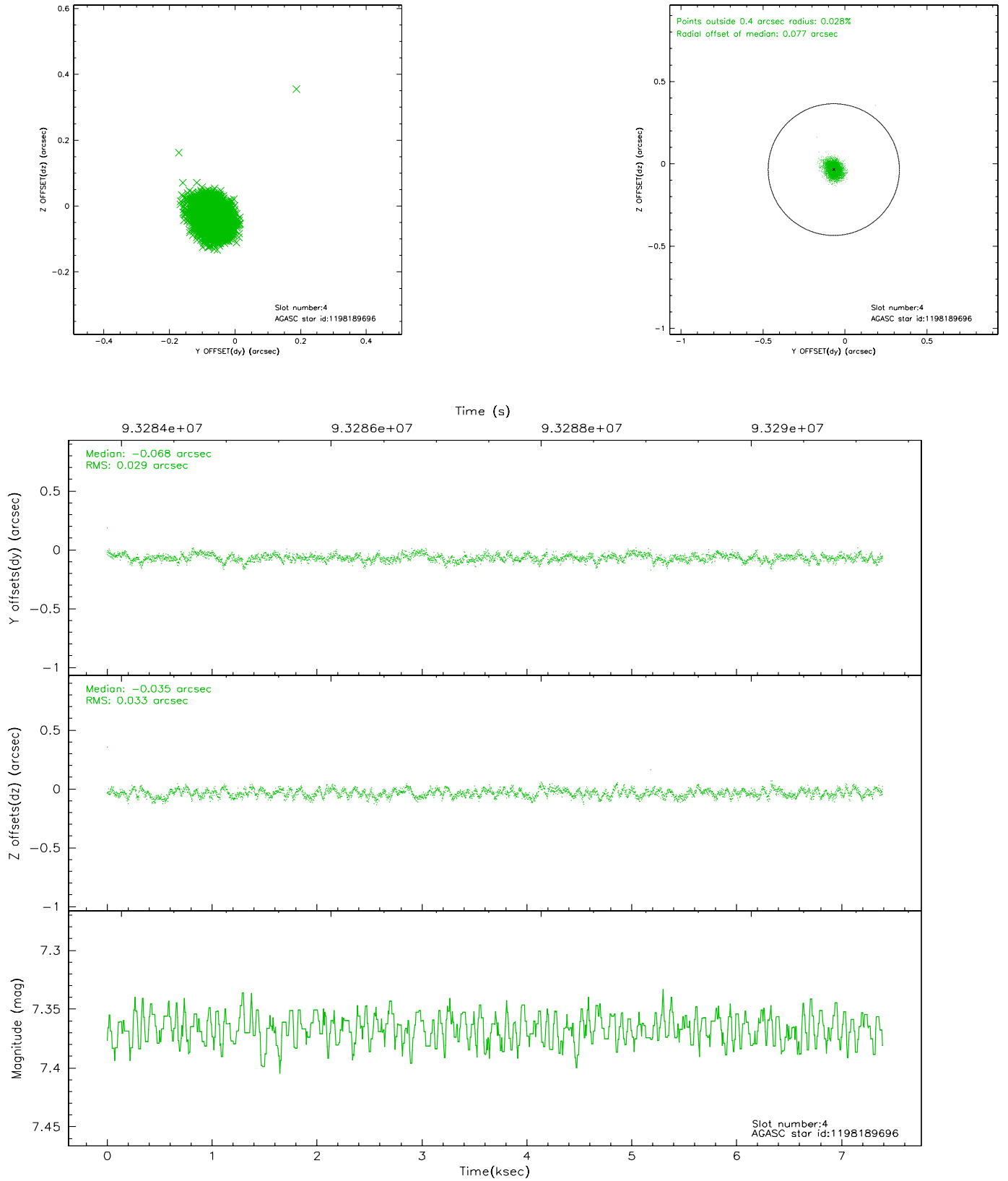
slot	status	id	mag	n_pts	med_dy	med_dz	dr1	dr2	ra	dec	mean_y	mean_z
0	FID	ACIS-I-2	7.16	1802	-0.027	-0.050	0.009	0.015	0.000000	0.000000	-756.26	-836.47
1	FID	ACIS-I-4	7.18	1802	-0.070	0.037	0.005	0.009	0.000000	0.000000	2157.40	1069.41
2	FID	ACIS-I-5	7.23	1803	-0.004	0.081	0.009	0.015	0.000000	0.000000	-1809.07	1068.17
3	GUIDE	1197885328	7.23	3607	-0.024	-0.014	0.046	0.073	16.283090	-71.733943	-968.86	986.05
4	GUIDE	1198189696	7.37	3607	-0.068	-0.035	0.046	0.073	15.223750	-72.697522	1543.97	-1673.41
5	GUIDE	1197750936	7.56	3606	-0.055	-0.063	0.045	0.073	15.387940	-71.549550	-2032.43	403.47
6	GUIDE	1197884536	8.50	3607	0.036	0.040	0.056	0.091	17.160729	-71.835289	-171.68	1673.27
7	GUIDE	1197884712	8.30	3606	0.111	0.073	0.053	0.085	16.087398	-72.252690	569.04	-95.23

2.4 Star Slots

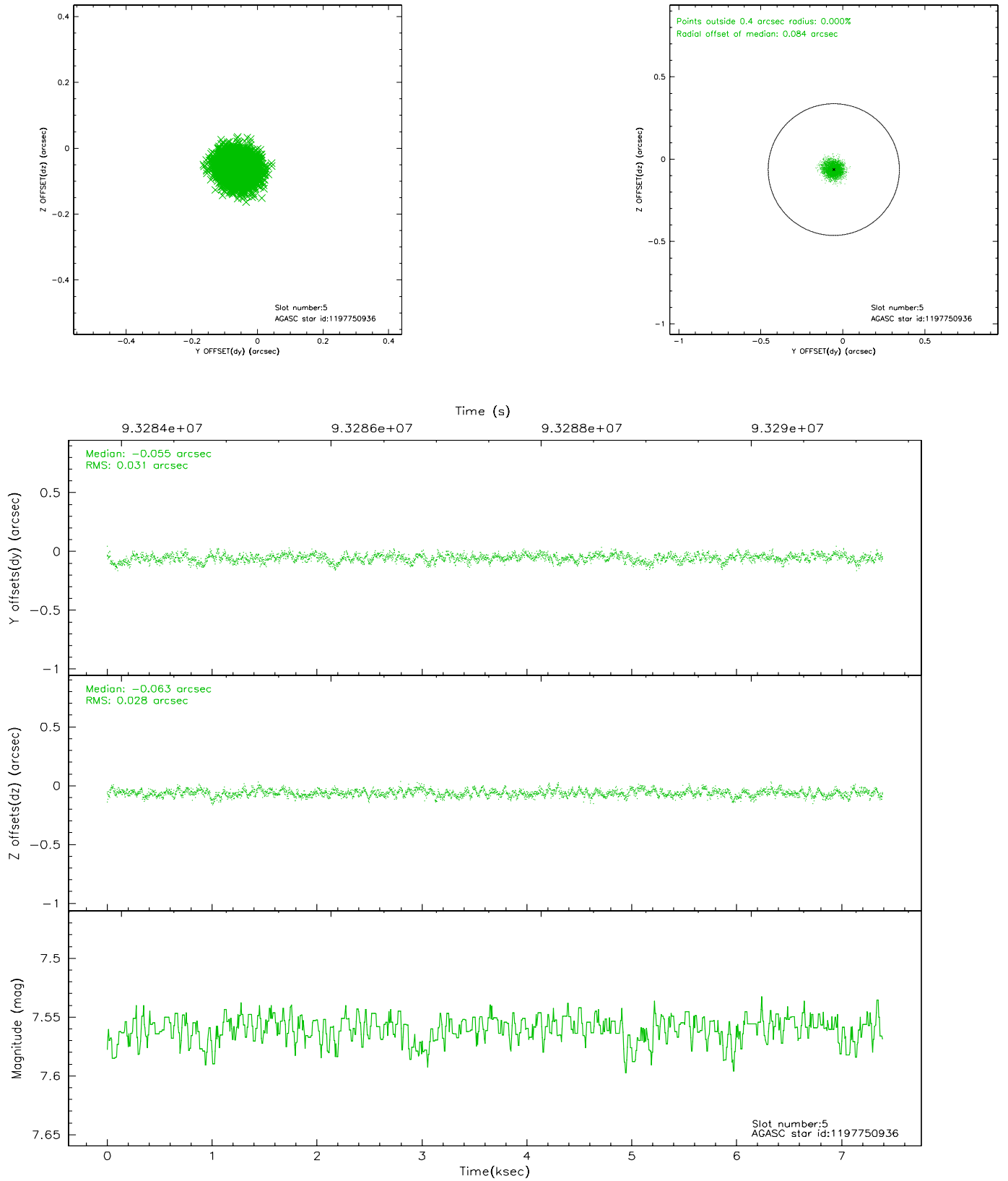
2.4.1 Slot 3



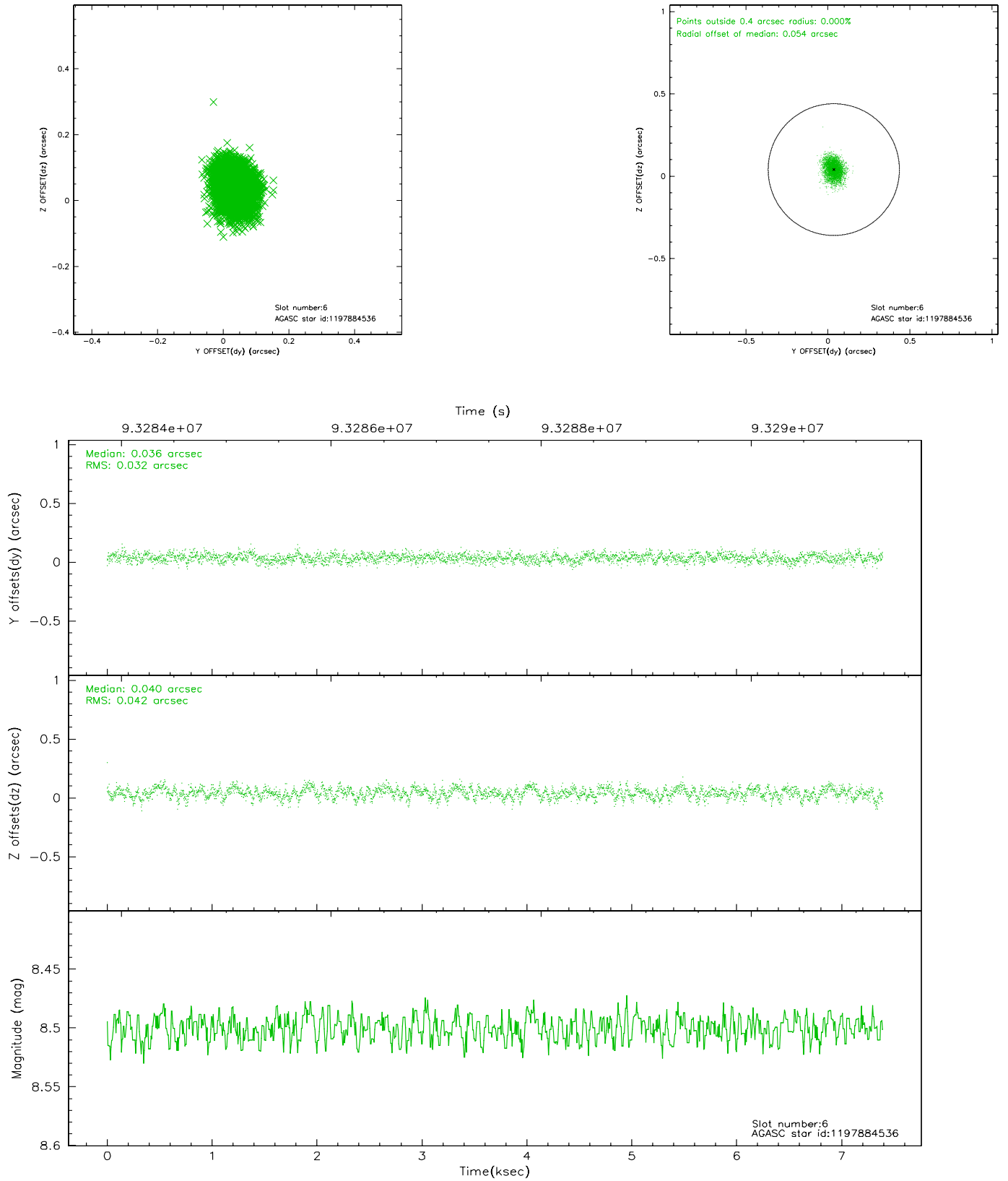
2.4.2 Slot 4



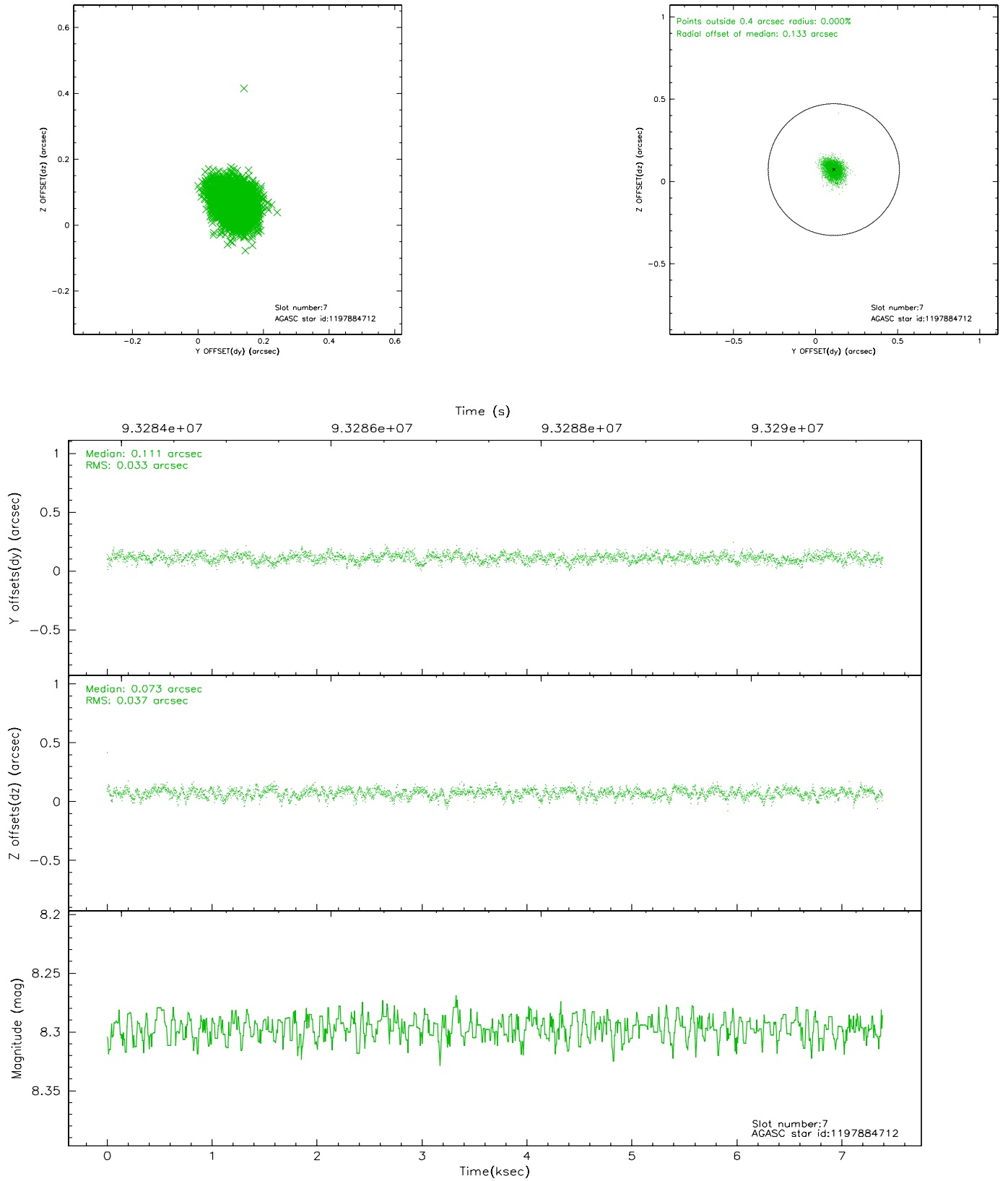
2.4.3 Slot 5



2.4.4 Slot 6

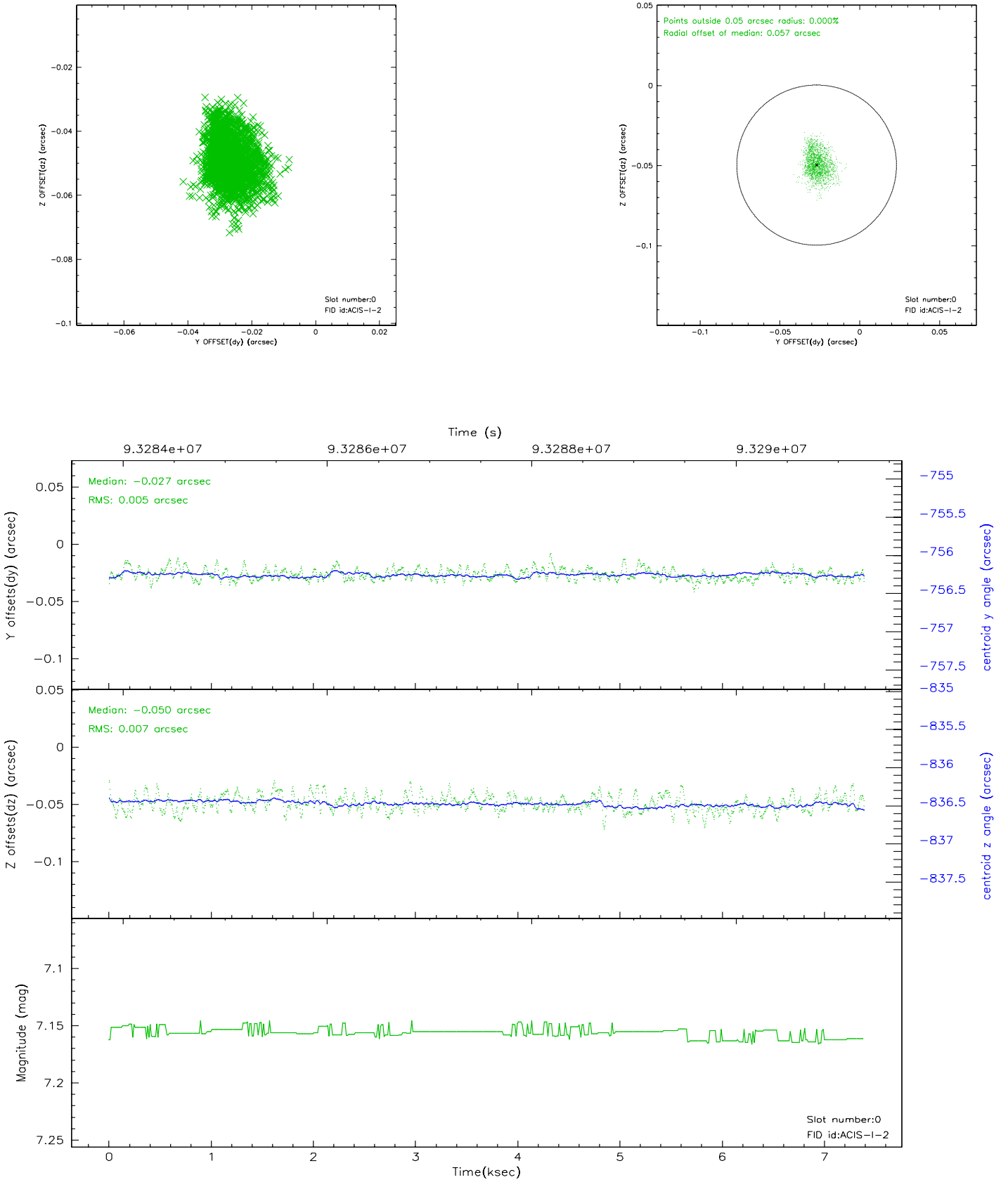


2.4.5 Slot 7

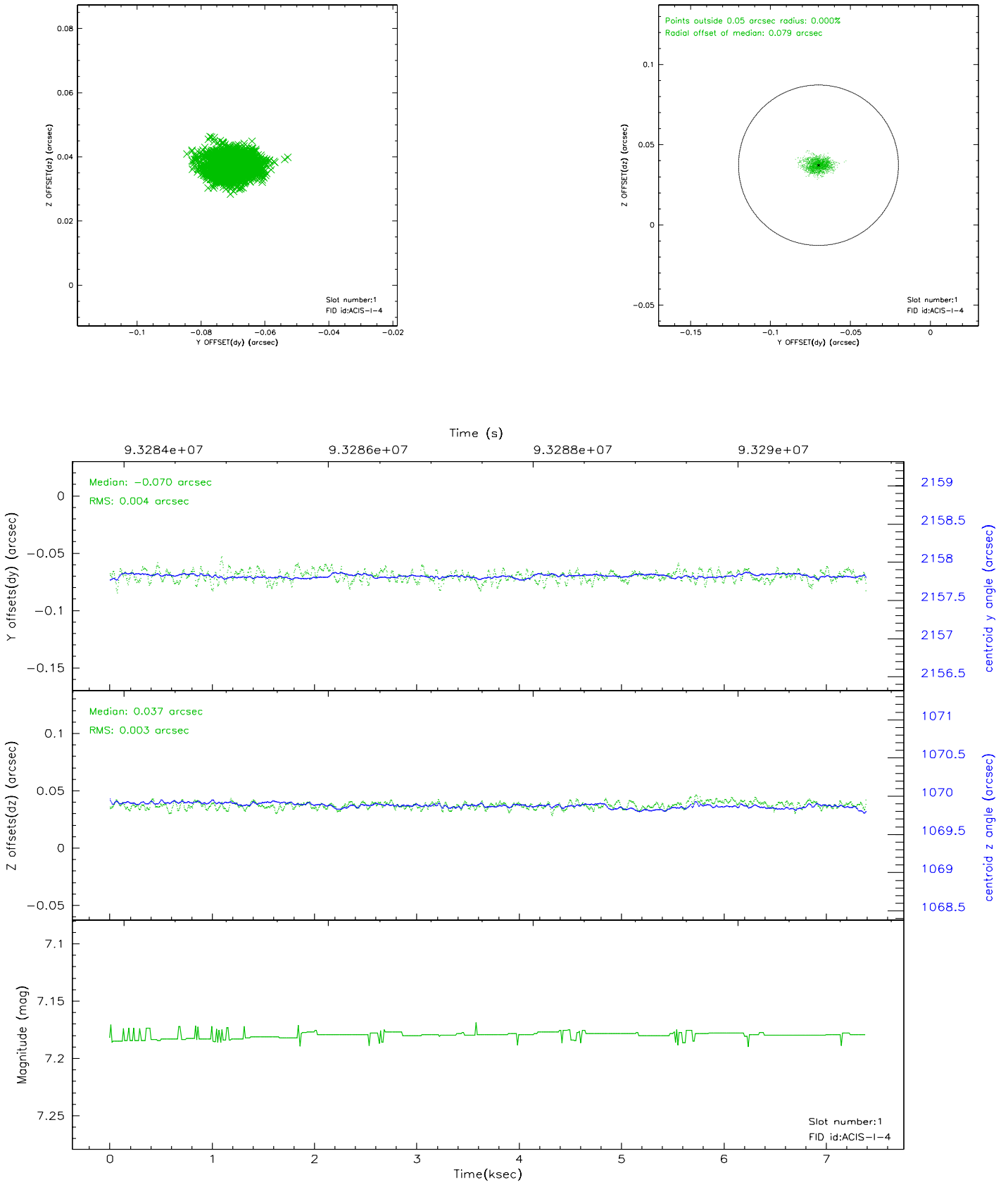


2.5 FID Slots

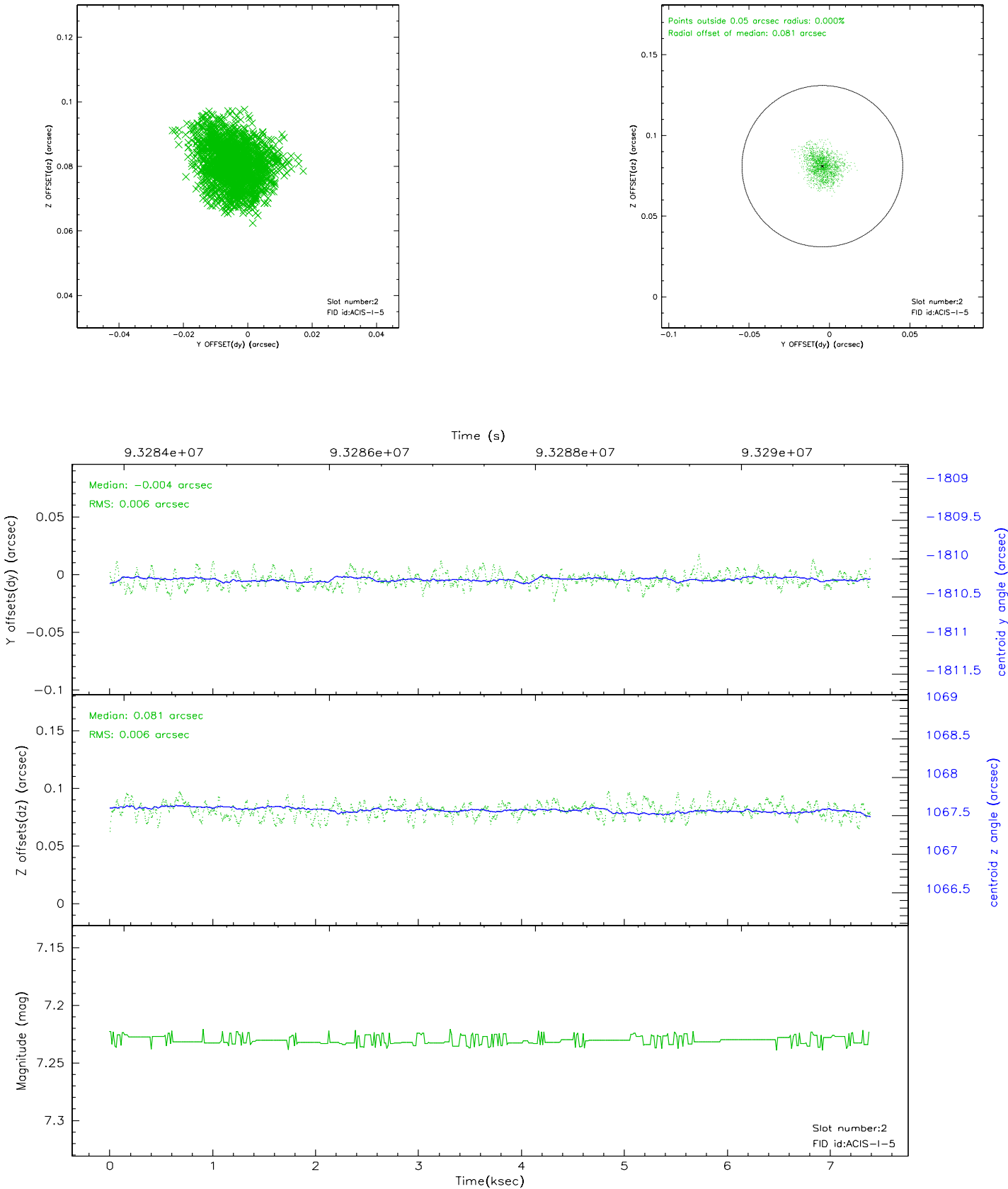
2.5.1 Slot 0



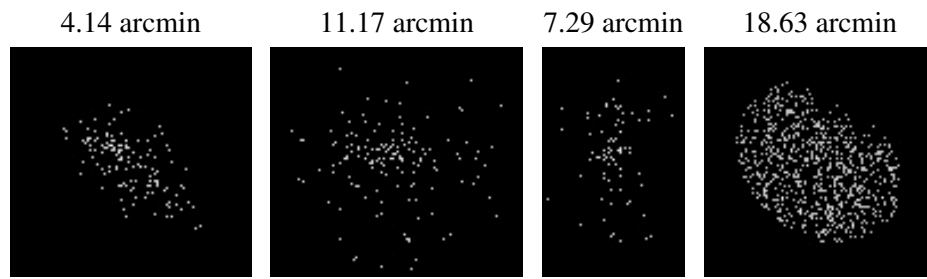
2.5.2 Slot 1



2.5.3 Slot 2



3 Point Sources



A Summary

A.1 Status

V&V Scientist	Joy Nichols
V&V Date (YYYY-MM-DD)	2010.10.01
V&V Edition	2
V&V Disposition and Status	OK
V&V Charge Time	6.96

A.2 Comments

There are 2 observations with the obsid number 1315. They appear in separate spacecraft loads with these duplicate numbers. Because the 2 obsids used different instrument configurations, the telemetry file of the other obsid 1315 was edited to create a new obsid number, obsid 62868. This obsid retains the 1315 designation.