

V&V Reference Report

L2 ASCDS Version : 7.6.10

Observation 1308 - L2 Version 001
Chandra X-Ray Center

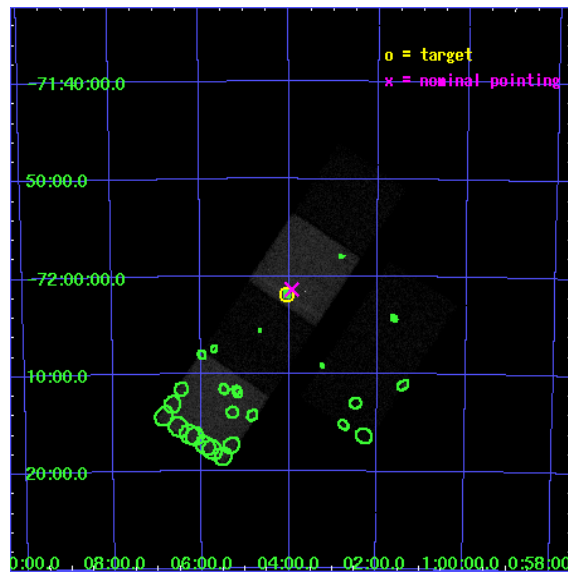
L2 Processing Date : Jun 19 2007

Contents

1	Front	2
2	OBI	3
2.1	OBI	3
2.1.1	Images	3
2.1.2	Bias	3
2.1.3	Parameters	4
2.1.4	Events	4
2.2	Compared Parameters	5
2.3	Aspect	6
2.4	Star Slots	9
2.4.1	Slot 3	9
2.4.2	Slot 4	10
2.4.3	Slot 5	11
2.4.4	Slot 6	12
2.4.5	Slot 7	13
2.5	FID Slots	14
2.5.1	Slot 0	14
2.5.2	Slot 1	15
2.5.3	Slot 2	16
3	Point Sources	17
A	Summary	18
A.1	Status	18
A.2	Comments	18

1 Front

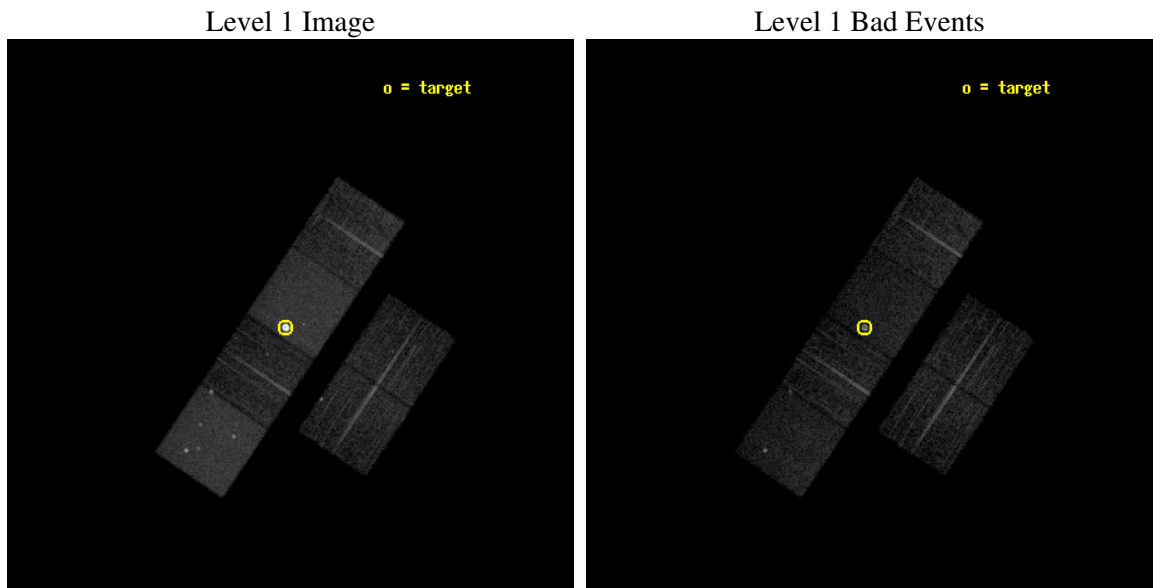
seq_num	590124
obs_id	1308
title	ACIS CALIBRATION OBSERVATION OF THE SUPERNOVA REMNANT E0102-72 (DEC 2000)
observer	Dr. CXC Calibration
object	E0102-72.3 [Chip S3, T=120, Offsets=1,0,0]
dtcycle	0
cycle	P
ra_targ	16.01
dec_targ	-72.032028
ra_nom	15.982923594846
dec_nom	-72.022657639208
roll_nom	303.78861311002
revision	2
ontime	7955.2000074089
livetime	7854.4664748687
ontime2	7955.2000074089
ontime3	7955.2000074089
ontime5	7955.2000074089
ontime6	7955.2000074089
ontime7	7955.2000074089
ontime8	7955.2000074089
l2events	169778



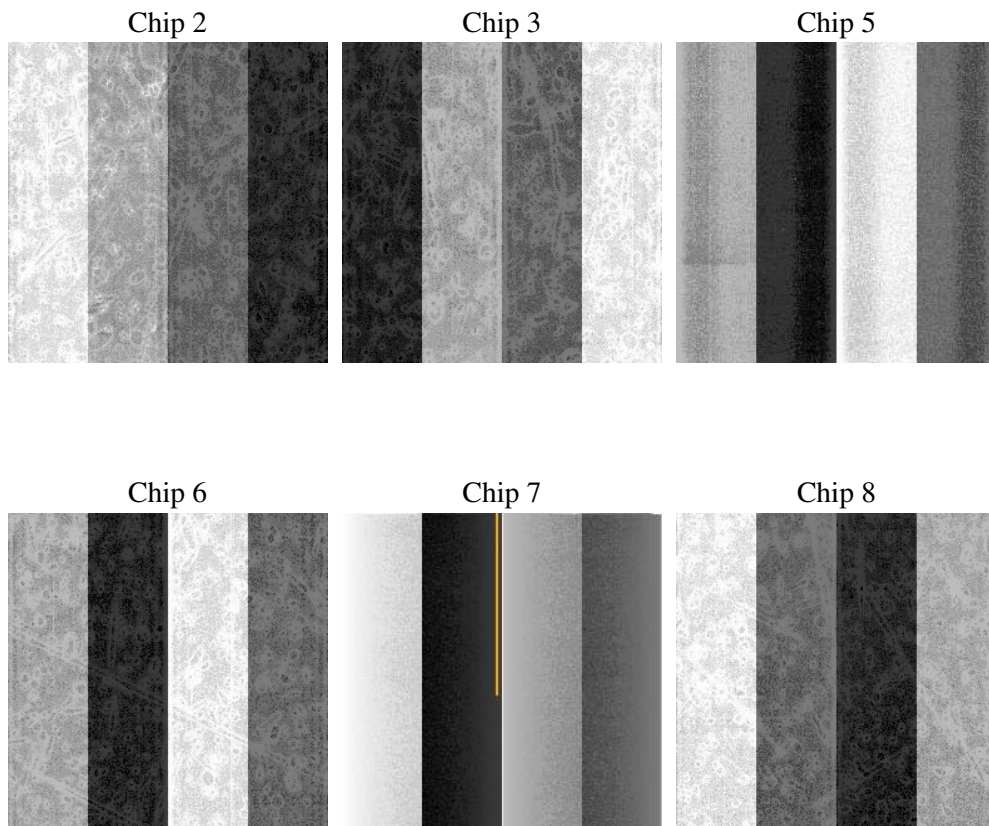
2 OBI

2.1 OBI

2.1.1 Images



2.1.2 Bias



2.1.3 Parameters

obi_num	0
ascdsver	7.6.10
caldsver	3.4.0
date	2007-06-19T23:34:45
revision	2

sched_exp_time	8000.000000
ontime	7955.2000074089
ontime2	7955.2000074089
ontime3	7955.2000074089
ontime5	7955.2000074089
ontime6	7955.2000074089
ontime7	7955.2000074089
ontime8	7955.2000074089
l1events	427224

2.1.4 Events

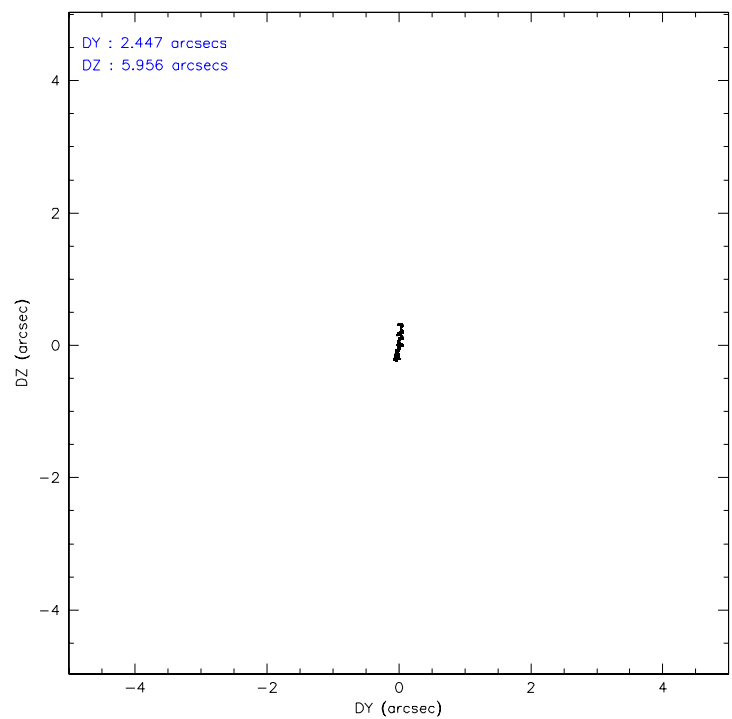
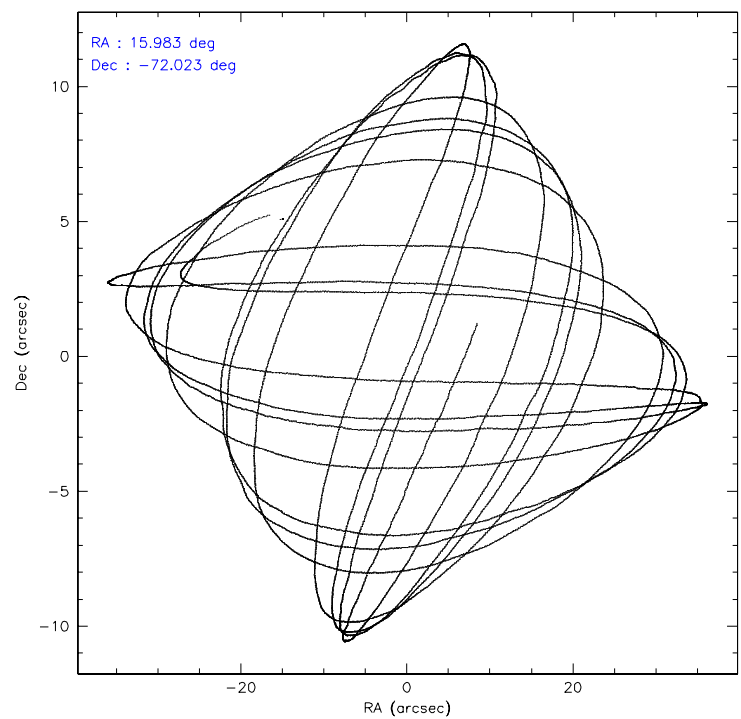
	ccd 2	ccd 3	ccd 5	ccd 6	ccd 7	ccd 8
level 1 events	47797	44723	82723	47652	145366	58963
rejected events	41465	39286	37184	40937	38162	46936
rejected %	86%	87%	44%	85%	26%	79%

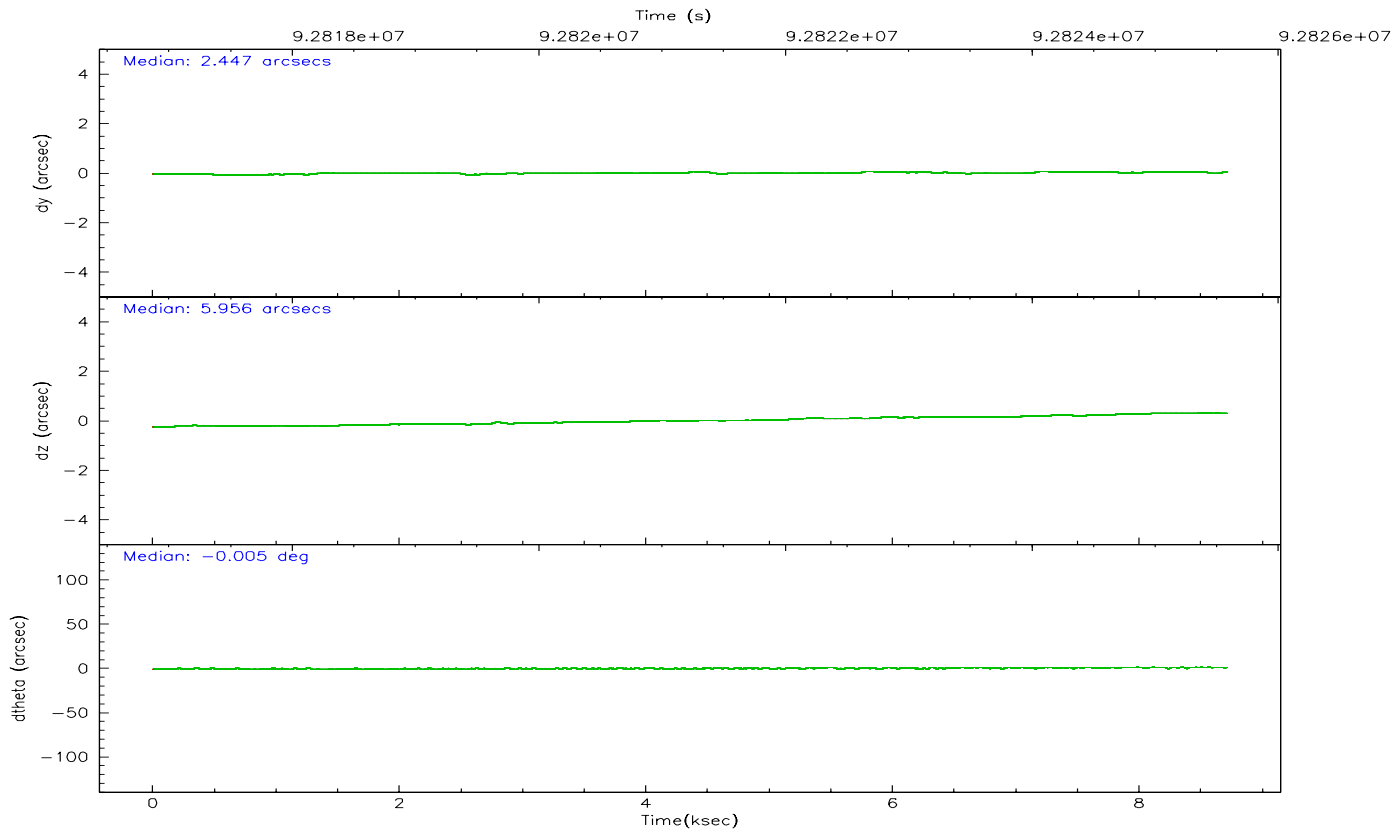
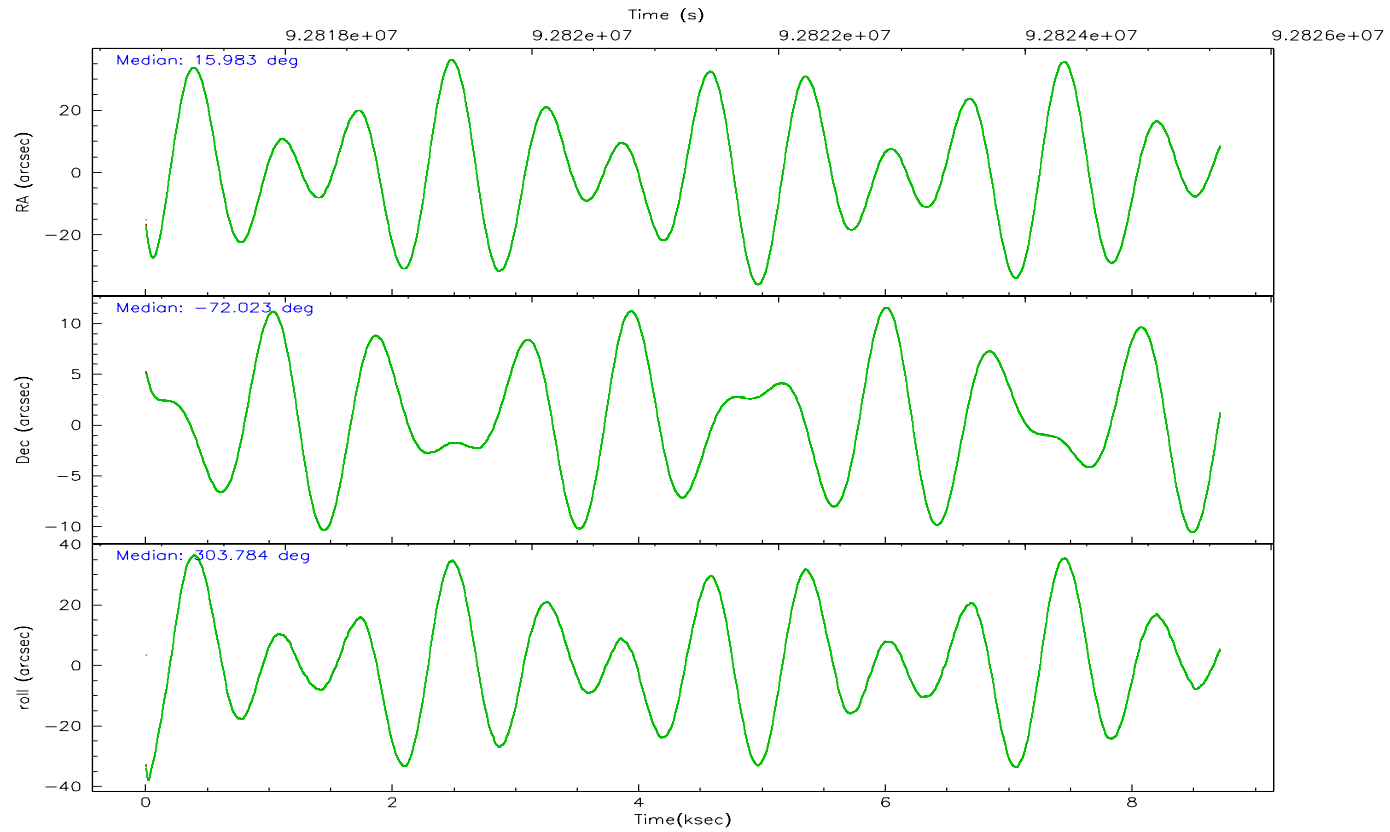
	ccd 2	ccd 3	ccd 5	ccd 6	ccd 7	ccd 8
grade 0 events	3068	2558	7651	3296	26700	4028
	6%	5%	9%	6%	18%	6%
grade 1 events	34	33	225	20	551	28
	0%	0%	0%	0%	0%	0%
grade 2 events	1275	1029	12965	1152	26511	2402
	2%	2%	15%	2%	18%	4%
grade 3 events	516	489	2365	612	11687	1294
	1%	1%	2%	1%	8%	2%
grade 4 events	521	463	2273	581	11681	1275
	1%	1%	2%	1%	8%	2%
grade 5 events	1609	1736	5357	1914	7383	2456
	3%	3%	6%	4%	5%	4%
grade 6 events	958	904	20338	1079	30739	3032
	2%	2%	24%	2%	21%	5%
grade 7 events	39816	37511	31549	38998	30114	44448
	83%	83%	38%	81%	20%	75%

2.2 Compared Parameters

Parameter	Planned	Actual	Parameter	Planned	Actual
Instrument	ACIS	ACIS	Obspar format version number	6	6
Detector	ACIS-235678	ACIS-235678	Obspar file type	PREDICTED	ACTUAL
Grating	NONE	NONE	Obspar update status	NONE	UPDATED
Data mode	FAINT	FAINT	Number of optional ACIS chips dropped	0	0
Observation mode	POINTING	POINTING	On-chip summing requested	N	N
Pointing RA	15.903172	15.98292359484581	Subarray requested	NONE	NONE
Pointing Dec	-72.010721	-72.02265763920785	Alternating exposures requested	N	N
Pointing Roll	303.556154	303.7886131100197	Primary exposure time	0.000000	3.2
SIM focus pos (mm)	-0.684267	-0.6828225247311905			
SIM defocus (mm)	0	0.001444936568705701			
SIM translation stage pos (mm)	-190.132523	-190.1400660498719			
SIM translation stage offset (mm)	0	0.00754346686406393			
Observation start time	92817588.184000	92816369.004419			
Observation start date	2000-12-10T06:38:44	2000-12-10T06:19:29			
Observation end time	92825588.184000	92825722.129777			
Observation end date	2000-12-10T08:52:04	2000-12-10T08:55:22			
Read mode	TIMED	TIMED			

2.3 Aspect



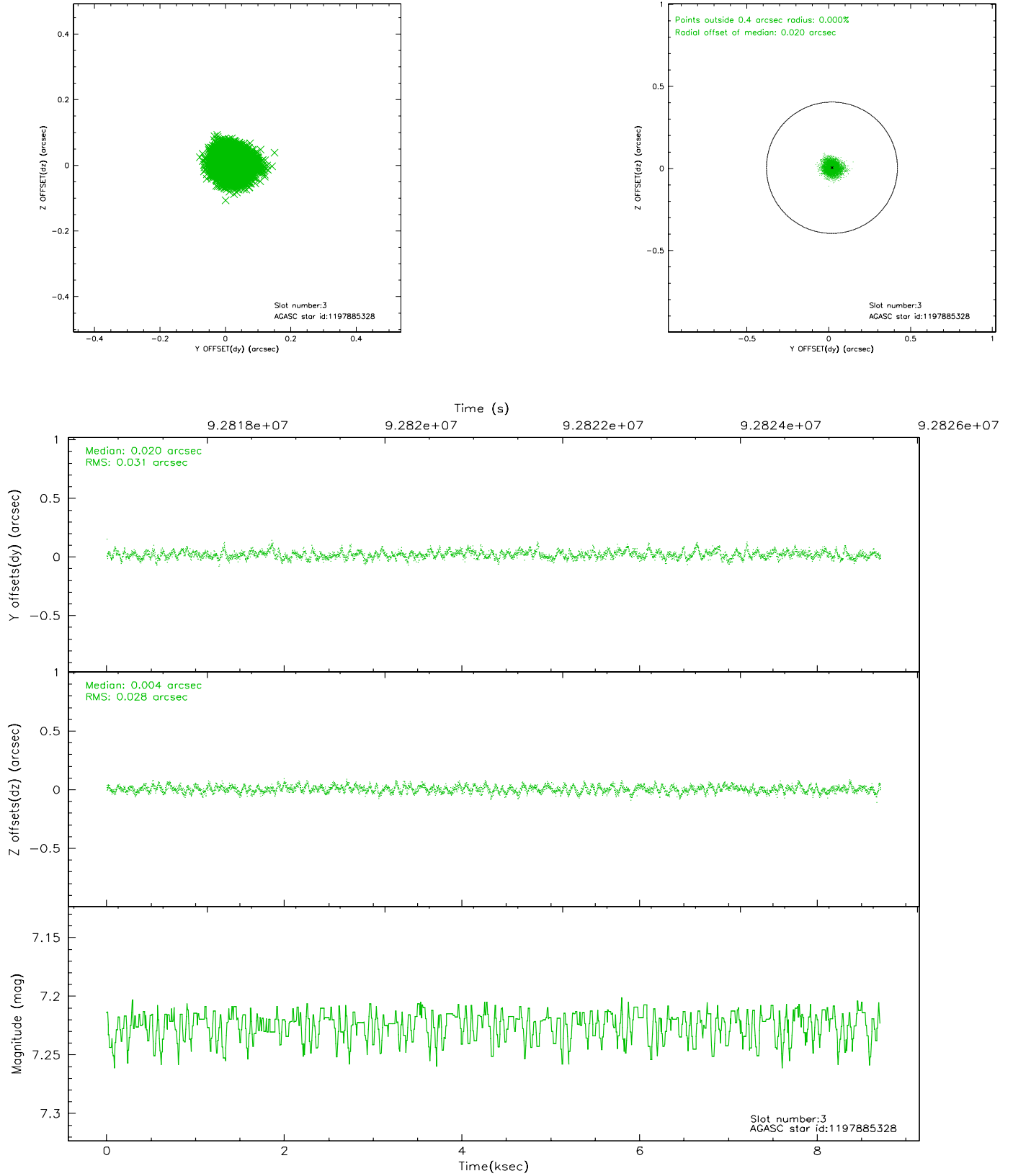


Slot Statistics

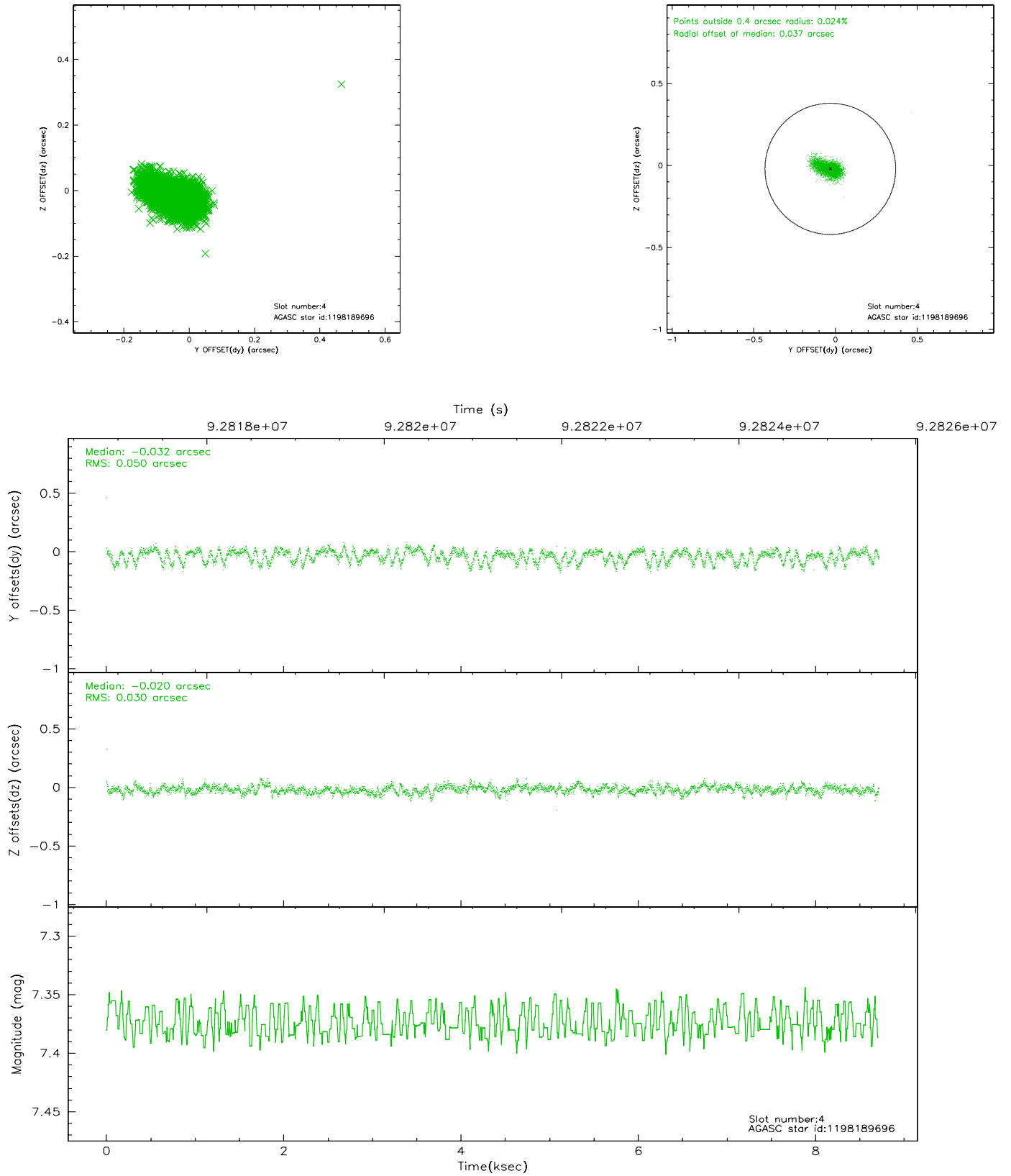
slot	status	id	mag	n_pts	med_dy	med_dz	dr1	dr2	ra	dec	mean_y	mean_z
0	FID	ACIS-S-2	7.11	2126	-0.028	0.026	0.007	0.011	0.000000	0.000000	-755.08	-1727.09
1	FID	ACIS-S-4	7.21	2125	-0.049	0.006	0.005	0.009	0.000000	0.000000	2157.87	180.76
2	FID	ACIS-S-5	7.23	2126	0.045	-0.024	0.006	0.010	0.000000	0.000000	-1807.06	175.07
3	GUIDE	1197885328	7.22	4251	0.020	0.004	0.044	0.071	16.283090	-71.733943	-592.96	906.89
4	GUIDE	1198189696	7.38	4251	-0.032	-0.020	0.060	0.105	15.223750	-72.697522	1661.15	-1975.29
5	GUIDE	1197750936	7.56	4250	-0.044	-0.040	0.057	0.088	15.387940	-71.549550	-1706.23	426.03
6	GUIDE	1197884536	8.49	4249	0.019	0.055	0.075	0.114	17.160729	-71.835289	264.89	1516.77
7	GUIDE	1197749416	10.30	4248	0.037	0.001	0.121	0.192	13.610513	-71.871242	-1797.38	-1889.26

2.4 Star Slots

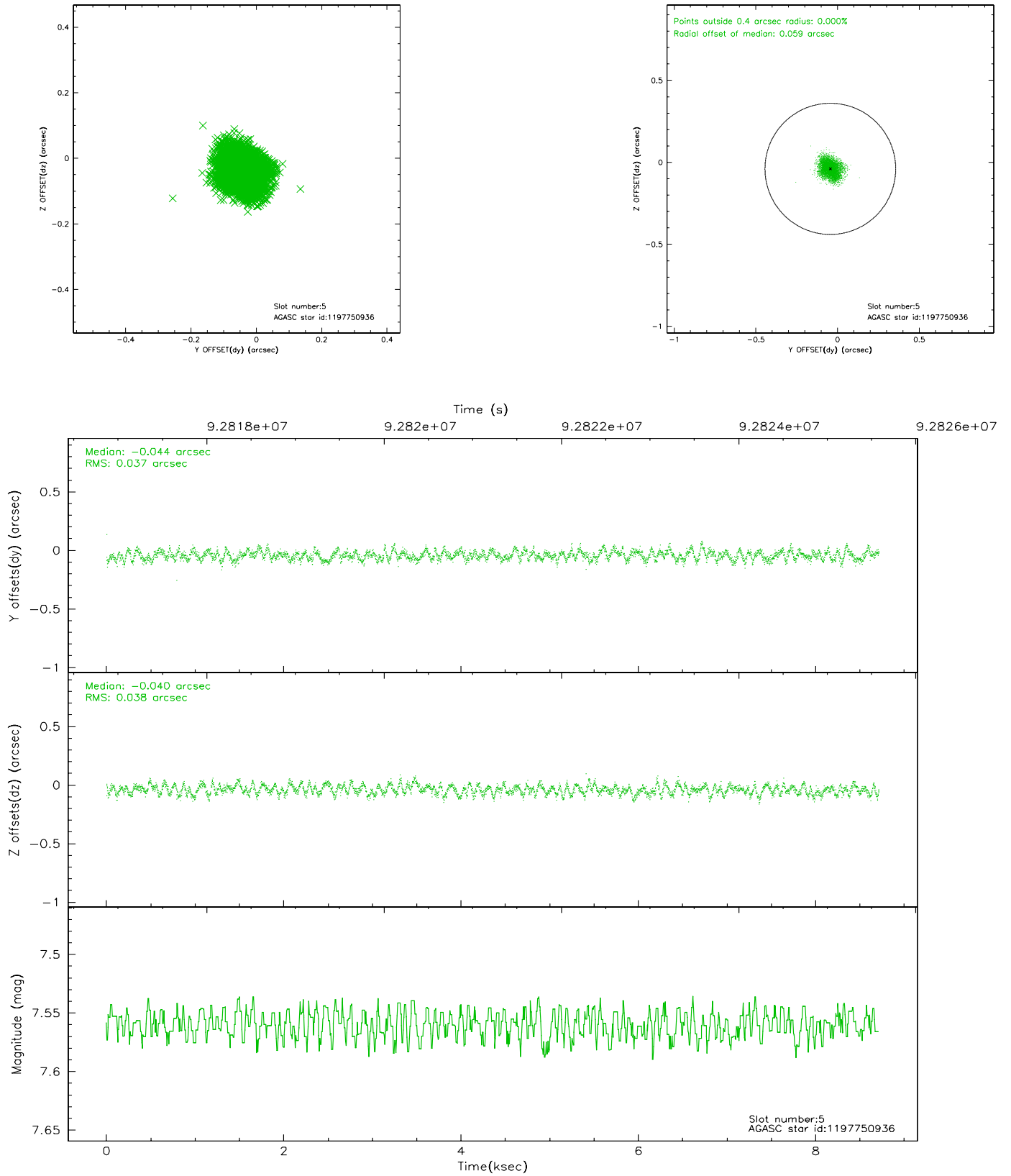
2.4.1 Slot 3



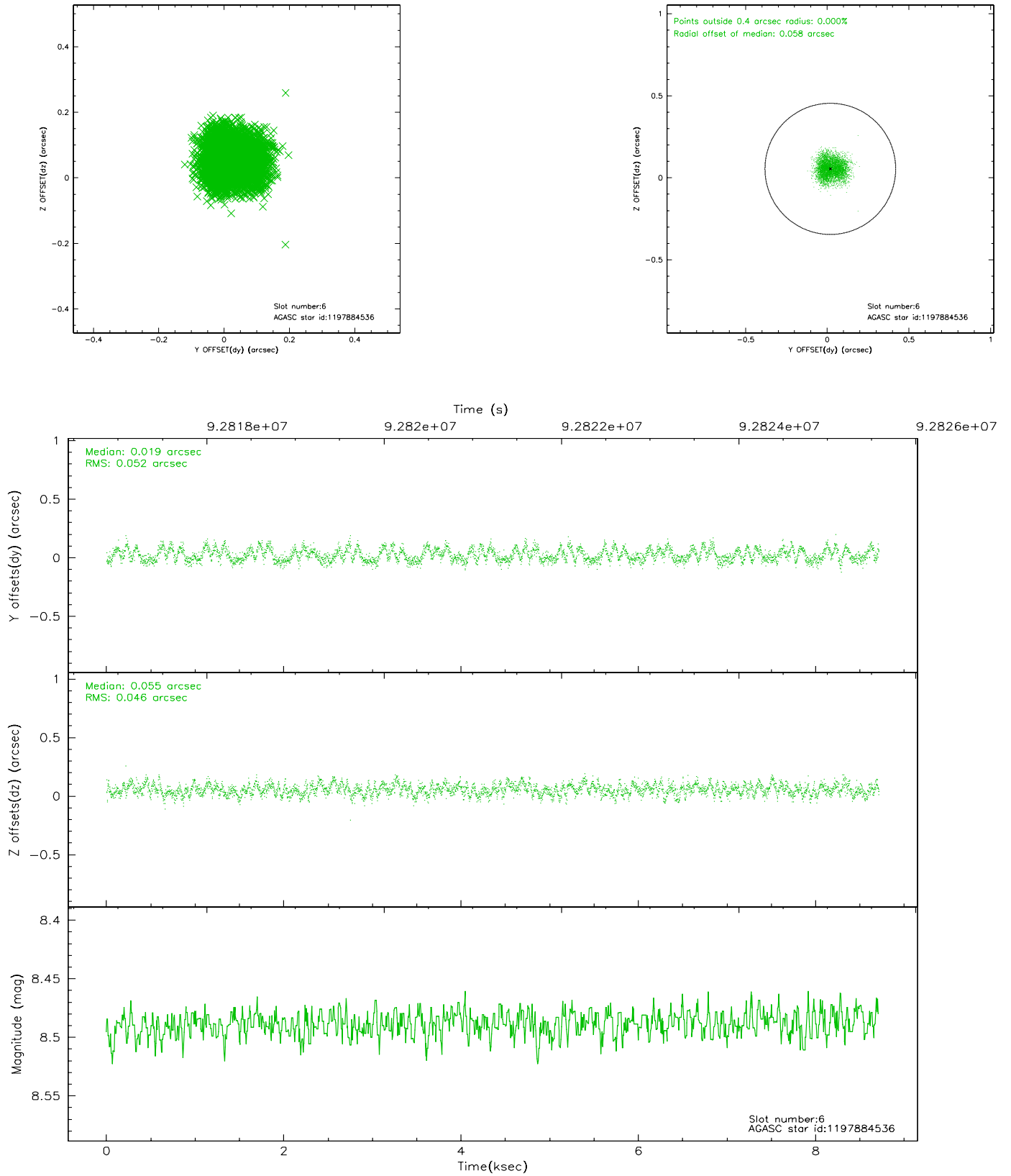
2.4.2 Slot 4



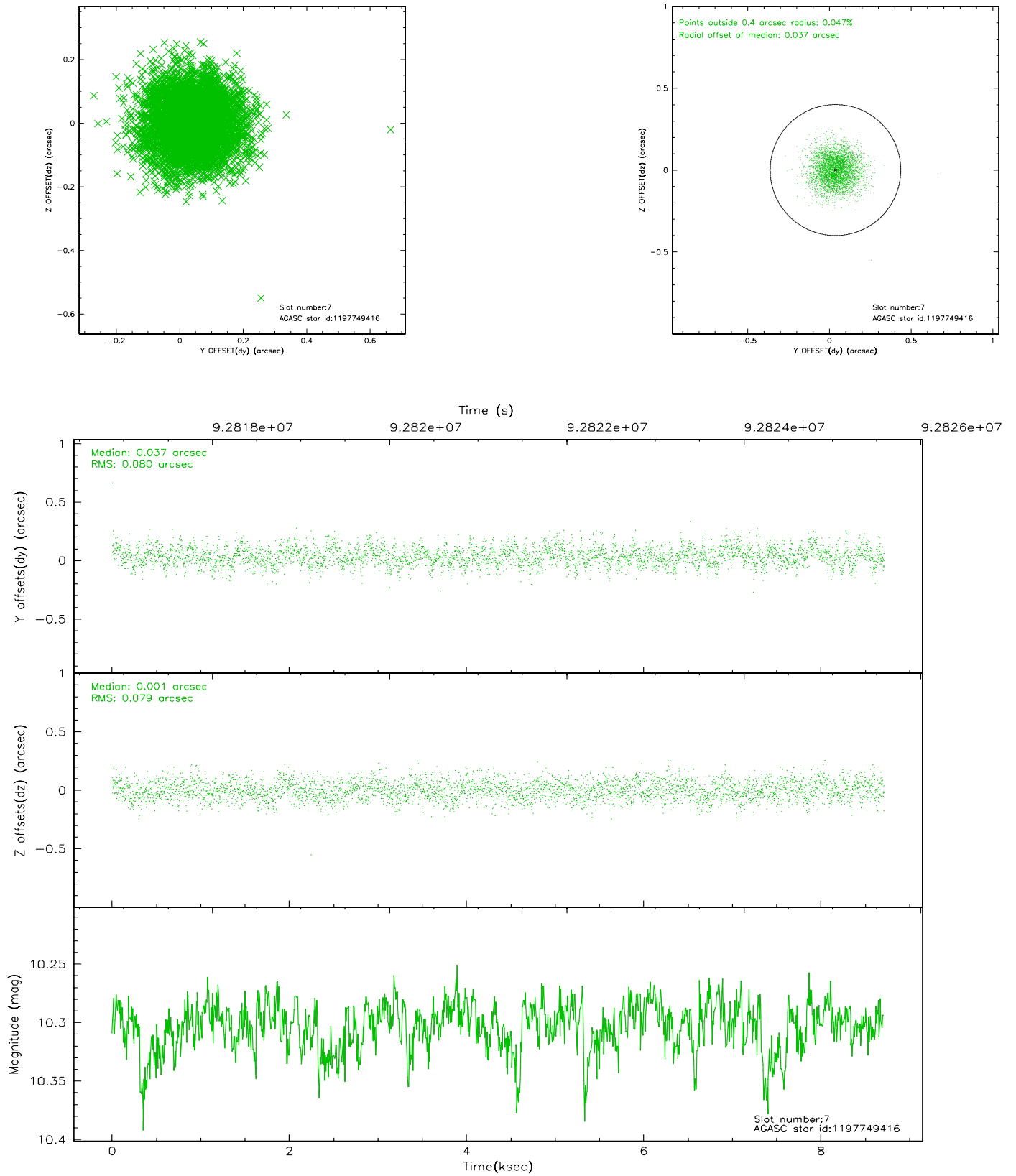
2.4.3 Slot 5



2.4.4 Slot 6

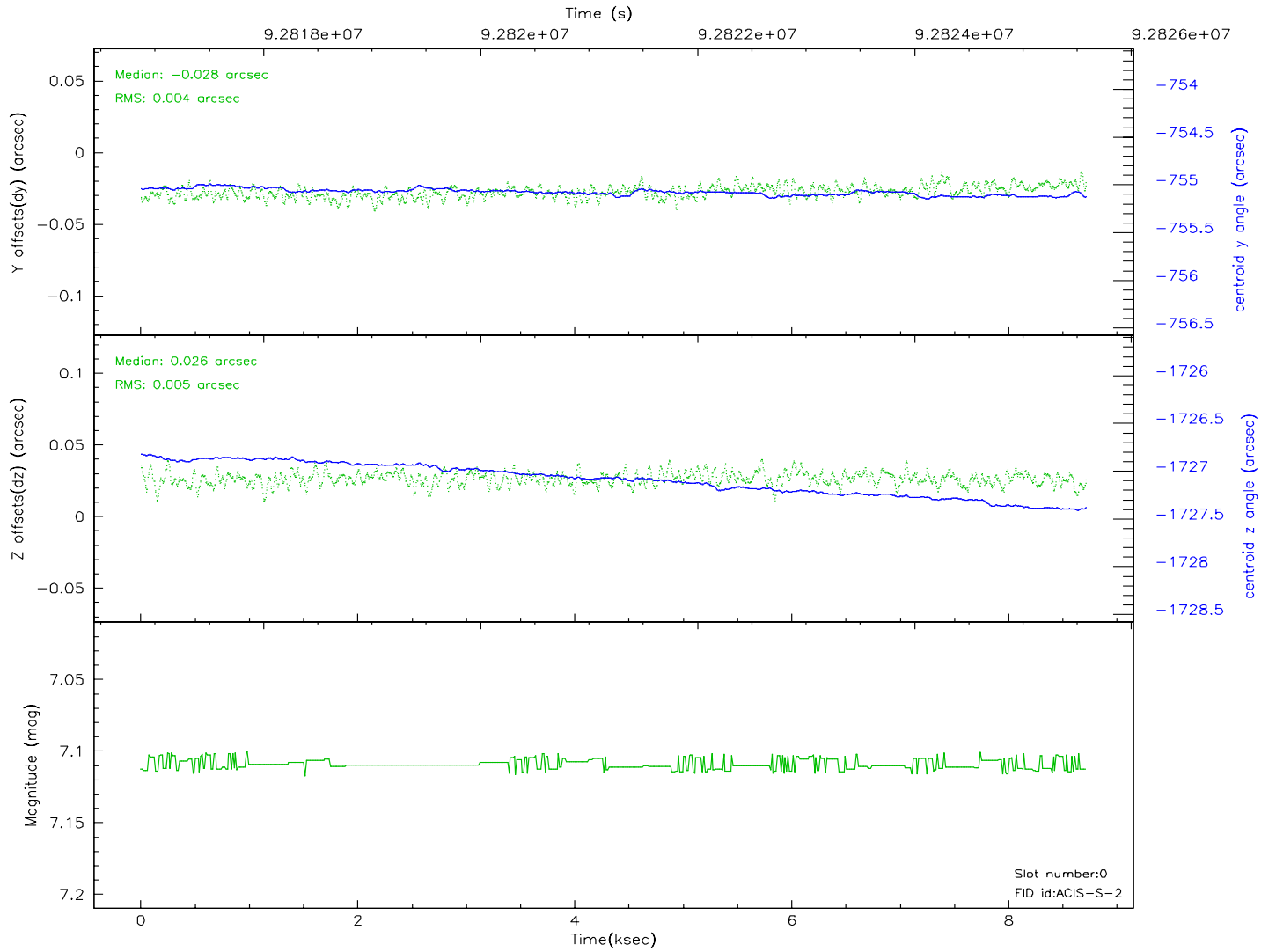
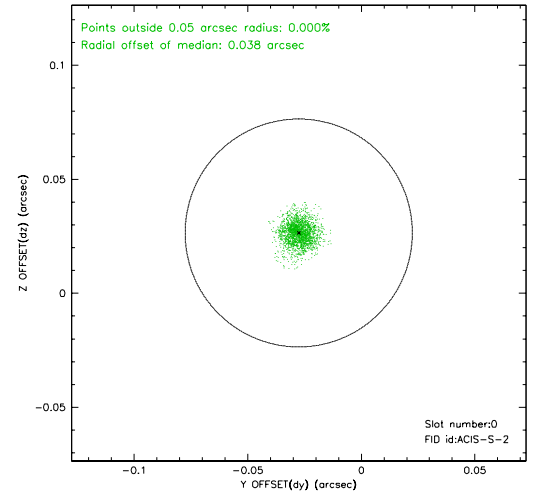
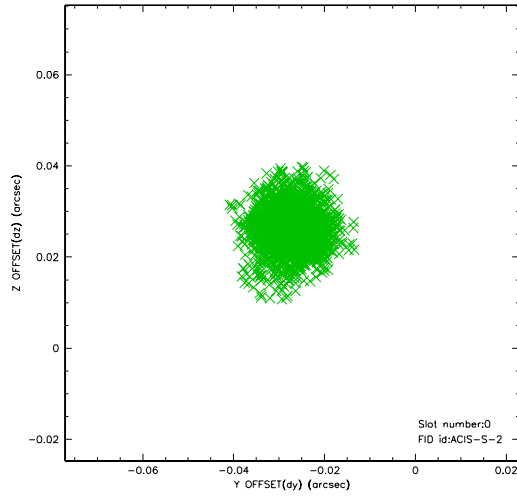


2.4.5 Slot 7

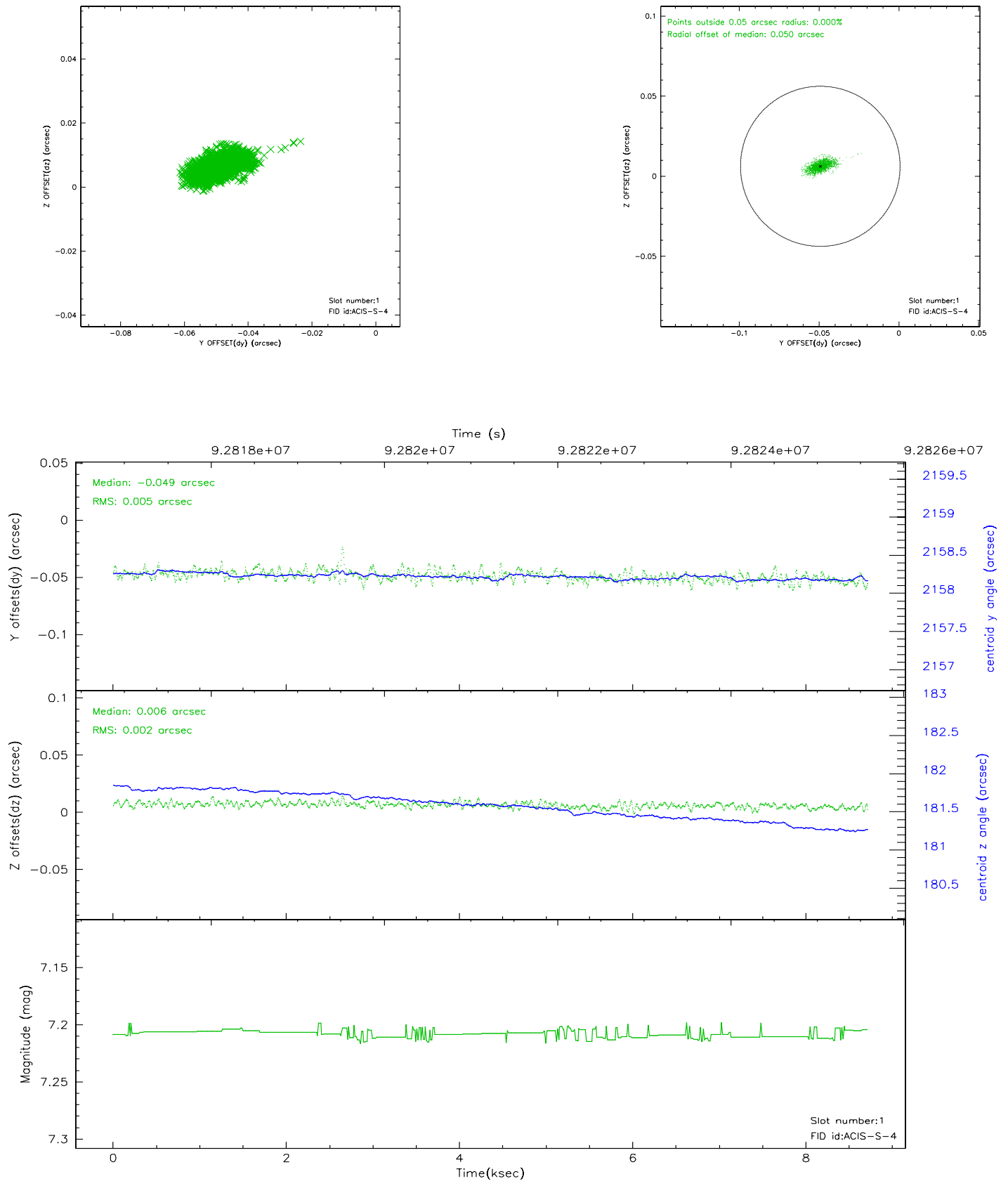


2.5 FID Slots

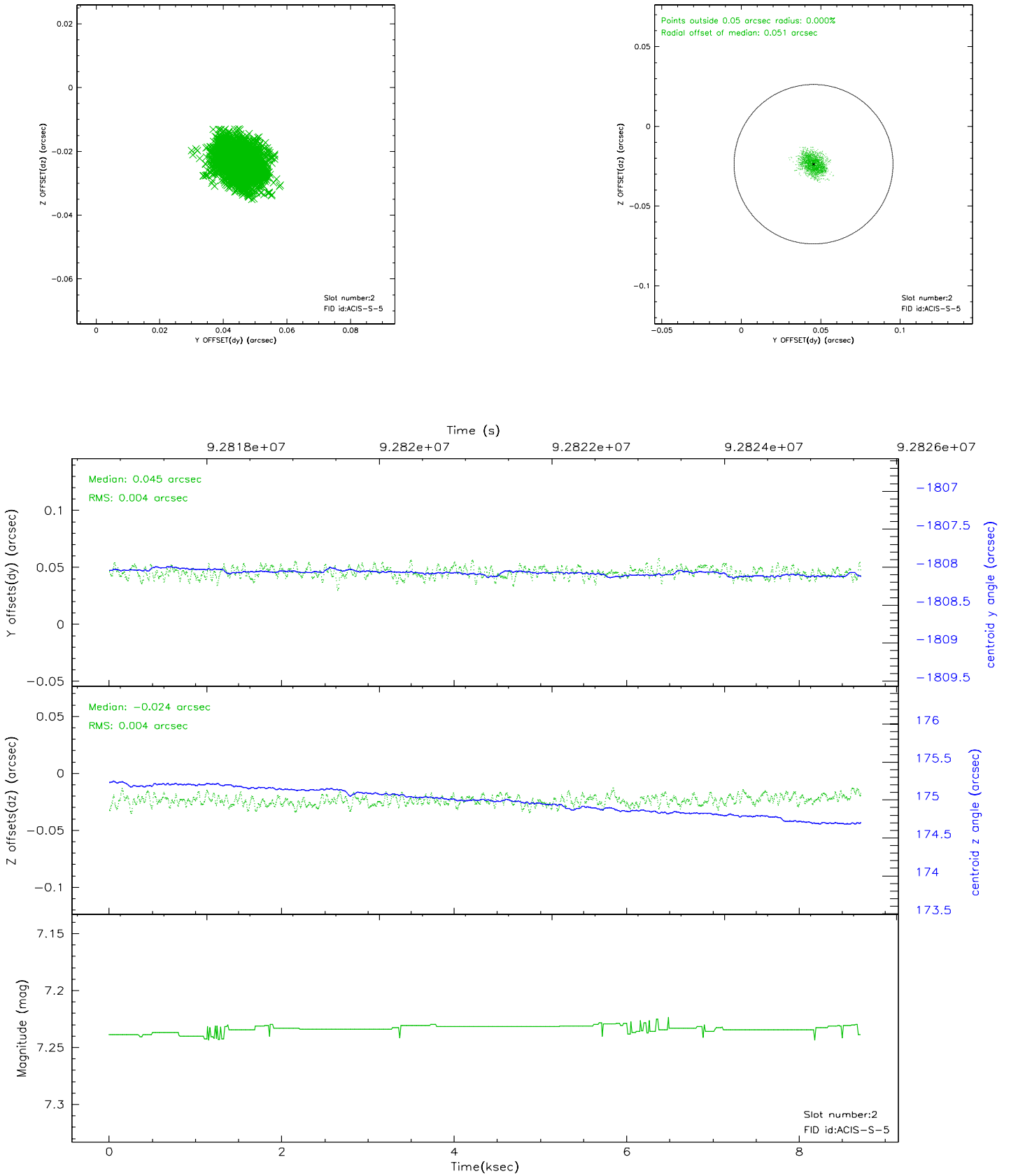
2.5.1 Slot 0



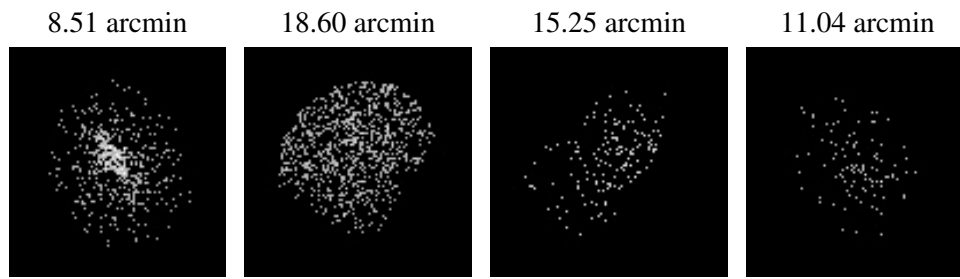
2.5.2 Slot 1



2.5.3 Slot 2



3 Point Sources



A Summary

A.1 Status

V&V Scientist	Beth Sundheim
V&V Date (YYYY-MM-DD)	2007.06.20
V&V Edition	1
V&V Disposition and Status	OK
V&V Charge Time	7.958

A.2 Comments