

V&V Reference Report

L2 ASCDS Version : 8.4.5

Observation 992 - L2 Version 5
Chandra X-Ray Center

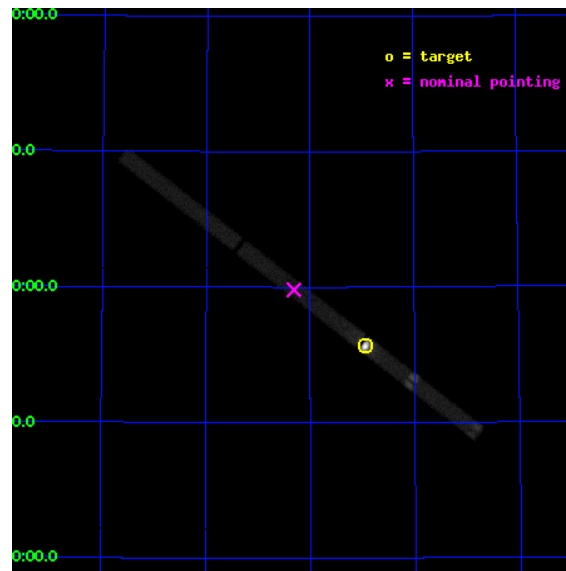
L2 Processing Date : Sep 7 2012

Contents

1	Front	2
2	OBI	3
2.1	OBI	3
2.1.1	Images	3
2.1.2	Parameters	4
2.1.3	Events	4
2.2	Compared Parameters	5
2.3	Aspect	6
2.4	Star Slots	9
2.4.1	Slot 3	9
2.4.2	Slot 4	10
2.4.3	Slot 5	11
2.4.4	Slot 6	12
2.4.5	Slot 7	13
2.5	FID Slots	14
2.5.1	Slot 0	14
2.5.2	Slot 1	15
2.5.3	Slot 2	16
A	Summary	17
A.1	Status	17
A.2	Comments	17

1 Front

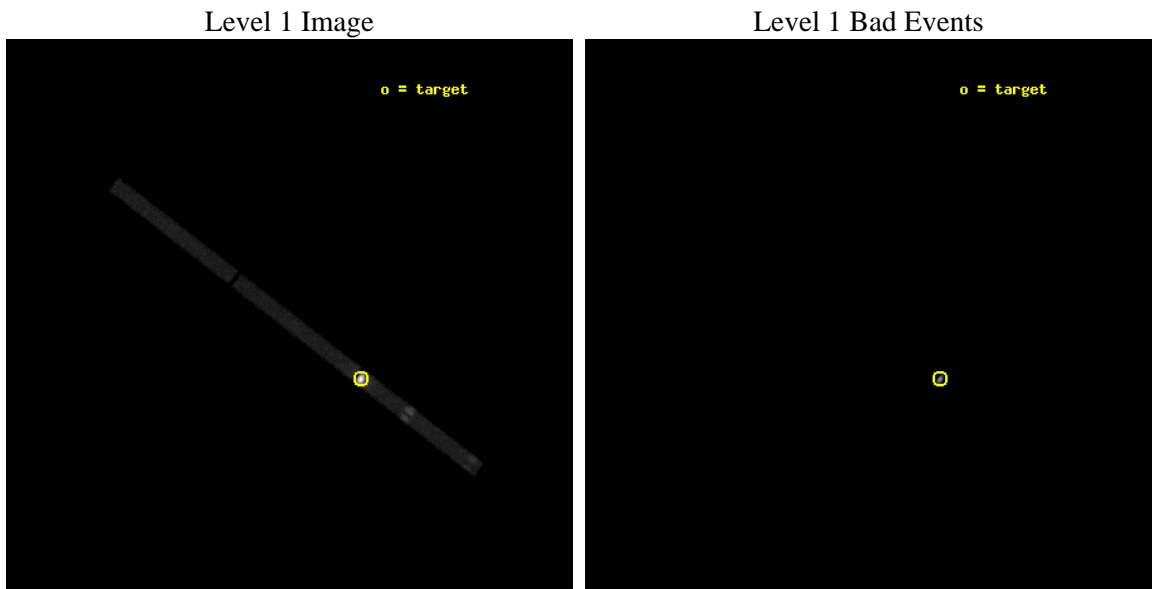
seq_num	290073	Sequence number
obs_id	992	Observation id
title	CALIBRATION OBSERVATIONS OF VEGA TO MONITOR THE TRANSMISSION OF THE OPTICAL/UV FILTERS ON ACIS AND HRC	Proposal title
observer	Dr. CXC Calibration	Principal investigator
object	VEGA, HRC-S, AO2	Source name
ra_targ	279.234792	Observer's specified target RA [deg]
dec_targ	38.783778	Observer's specified target Dec [deg]
ra_nom	279.57803842779	Nominal RA [deg]
dec_nom	38.990750149065	Nominal Dec [deg]
roll_nom	37.670276300479	Nominal Roll [deg]
revision	5	Processing version of data
ontime	2690.6251036227	[s]
livetime	959.83752191588	Ontime multiplied by DTCOR
l2events	422764	Number of level 2 events



2 OBI

2.1 OBI

2.1.1 Images



2.1.2 Parameters

obi_num	0	Obi number	sched_exp_time	2500.000000	[s] Scheduled observation exposure time
ascdsver	8.4.5	Processing system revision	ontime	2690.6251036227	[s]
caldbver	4.5.1.1	 	l1events	534083	Number of level 1 events
date	2012-09-07T05:07:04	Date and time of file creation			
revision	4	Processing version of data			

2.1.3 Events

Level 1 Events

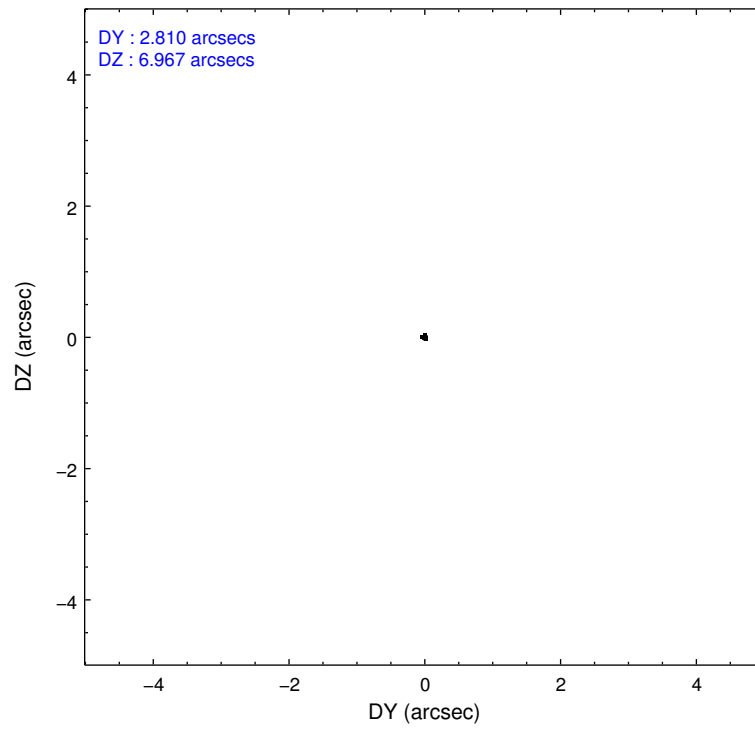
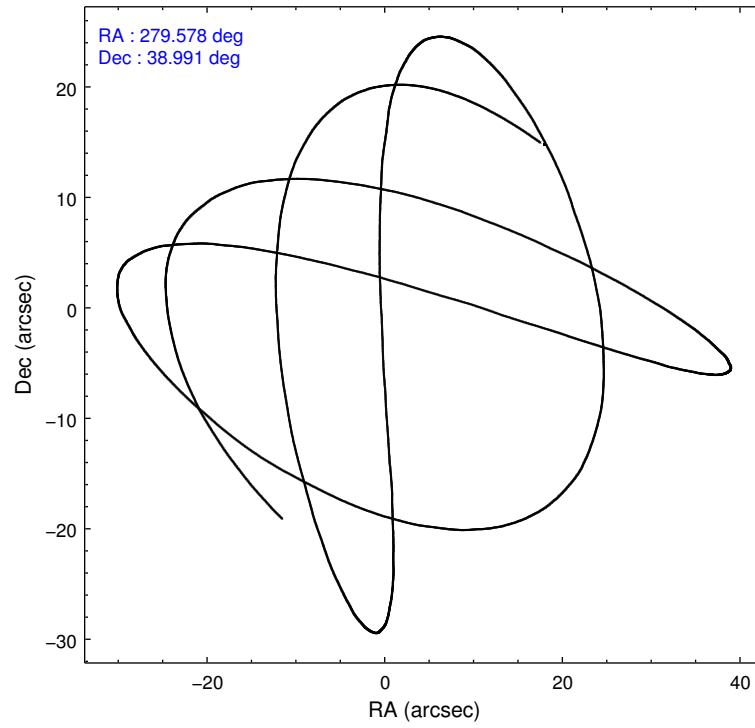
	segment 1	segment 2	segment 3
level 1 events	487985	23414	22684
rejected events	34015	1963	1907
rejected %	6%	8%	8%

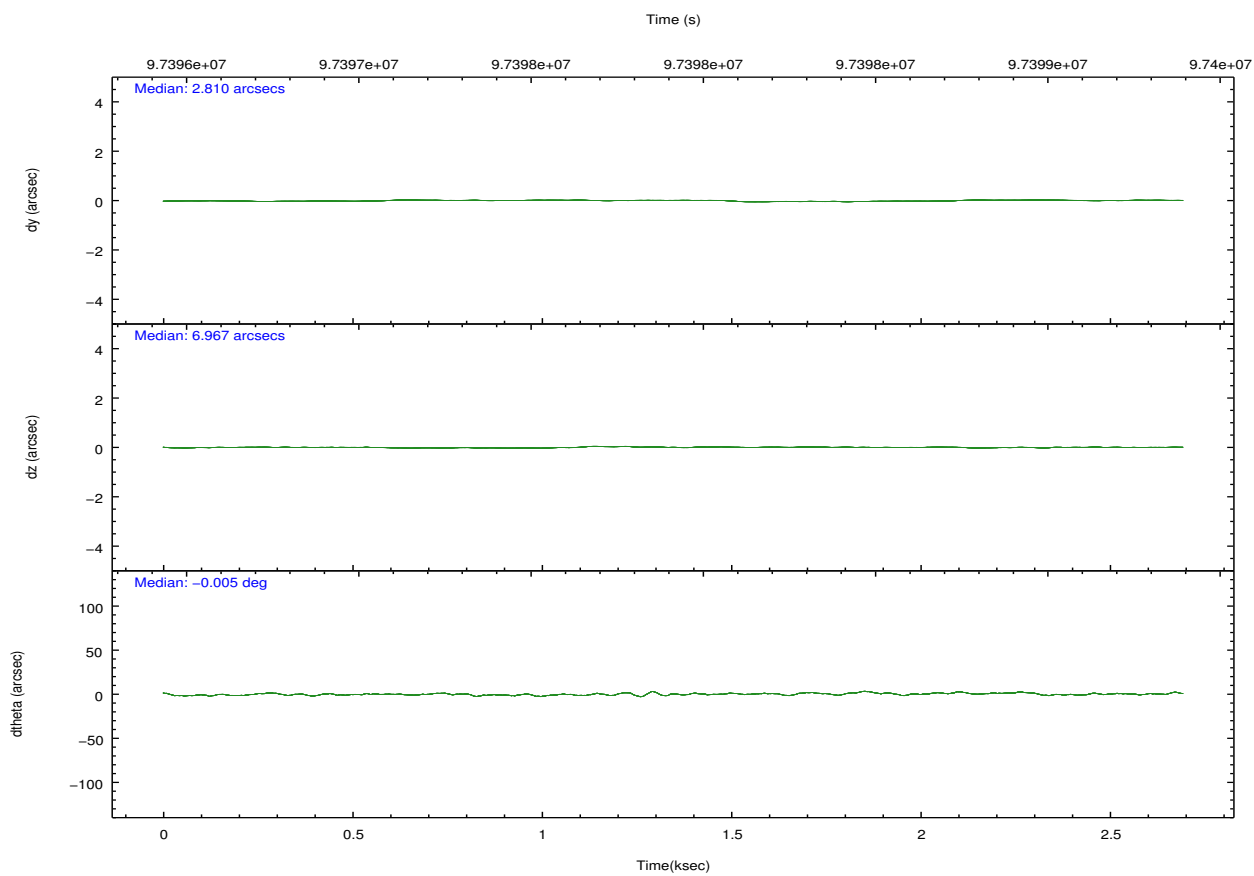
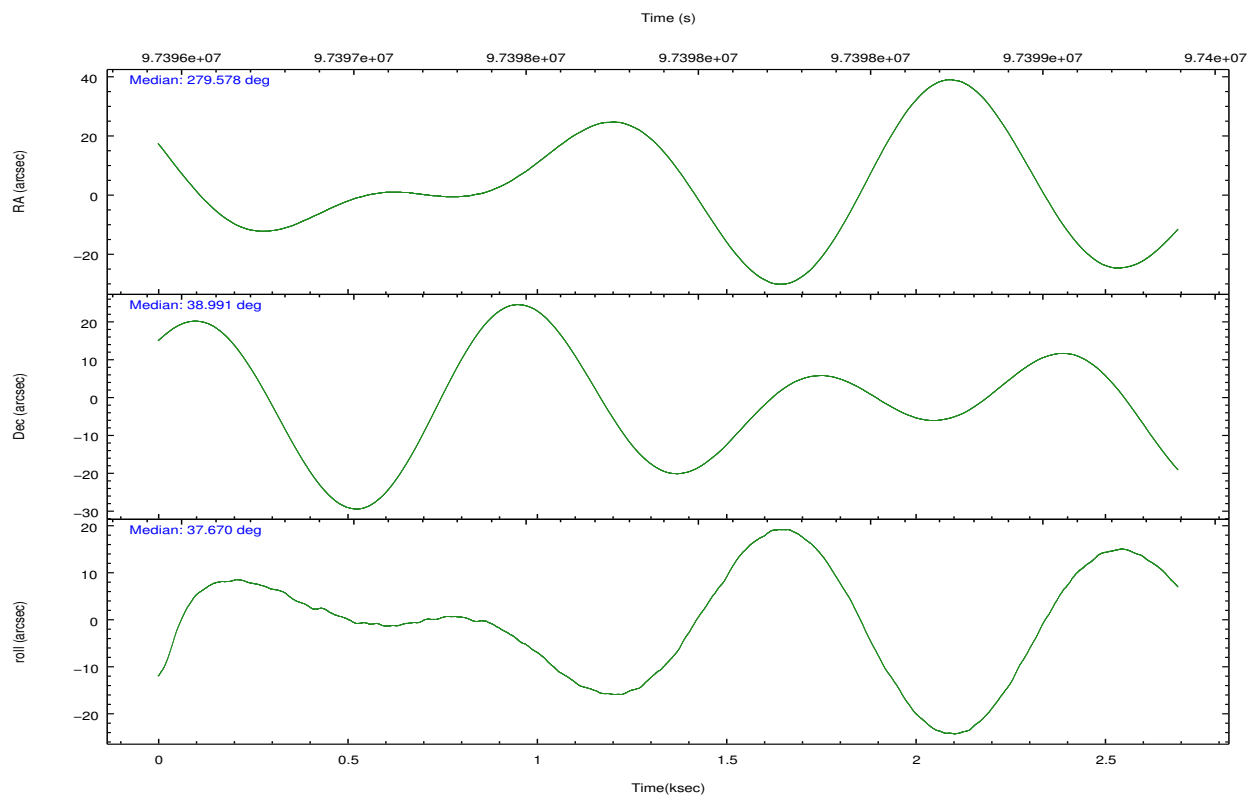
2.2 Compared Parameters

Parameter	Planned	Actual
Instrument	HRC	HRC
Detector	HRC-S	HRC-S
Grating	NONE	NONE
Data mode	OBSERVING	OBSERVING
Observation mode	POINTING	POINTING
[deg] Pointing RA	279.566165	279.578038427793
[deg] Pointing Dec	38.963465	38.99075014906509
[deg] Pointing Roll	37.610421	37.67027630047884
[s] Window start time (MET)	97372864.184000	97372864.184000
[s] Window stop time (MET)	99705664.184000	99705664.184000
[mm] SIM focus pos	-1.429586	-1.428180813131781
[mm] SIM defocus	0.1037507710433287	0.1051558262725154
[mm] SIM translation stage pos	250.455976	250.466033080201
[mm] SIM translation stage offset	0	-0.01005468664627074
[s] Observation start time (MET)	97396759.184000	97396382.83005901
Observation start date	2001-02-01T06:38:15	2001-02-01T06:33:02
[s] Observation end time (MET)	97399259.184000	97399513.69268
Observation end date	2001-02-01T07:19:55	2001-02-01T07:25:13

Parameter	Planned	Actual
Obspar format version number	7	7
Obspar file type	PREDICTED	ACTUAL
Obspar update status	NONE	UPDATED

2.3 Aspect



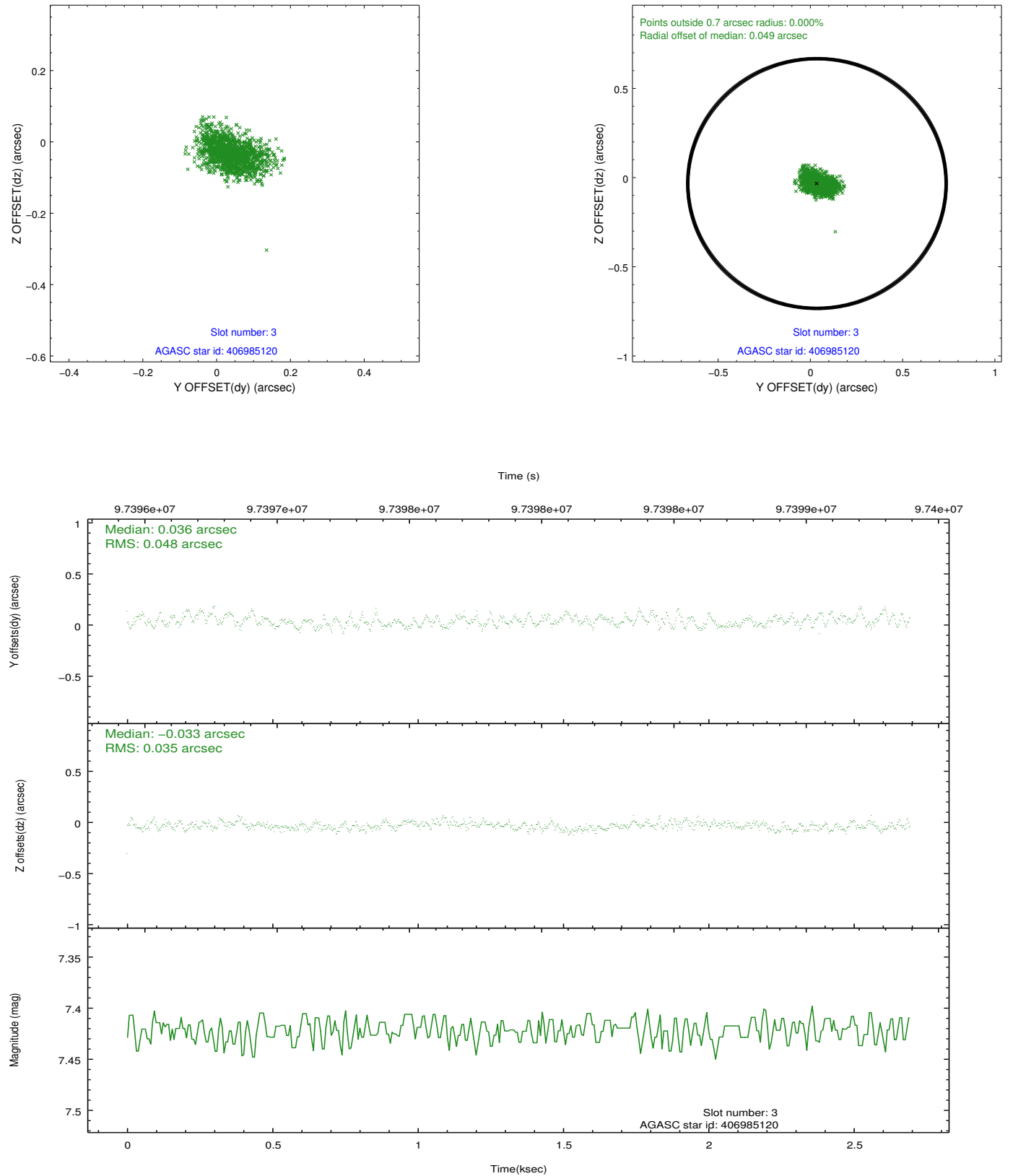


Slot Statistics

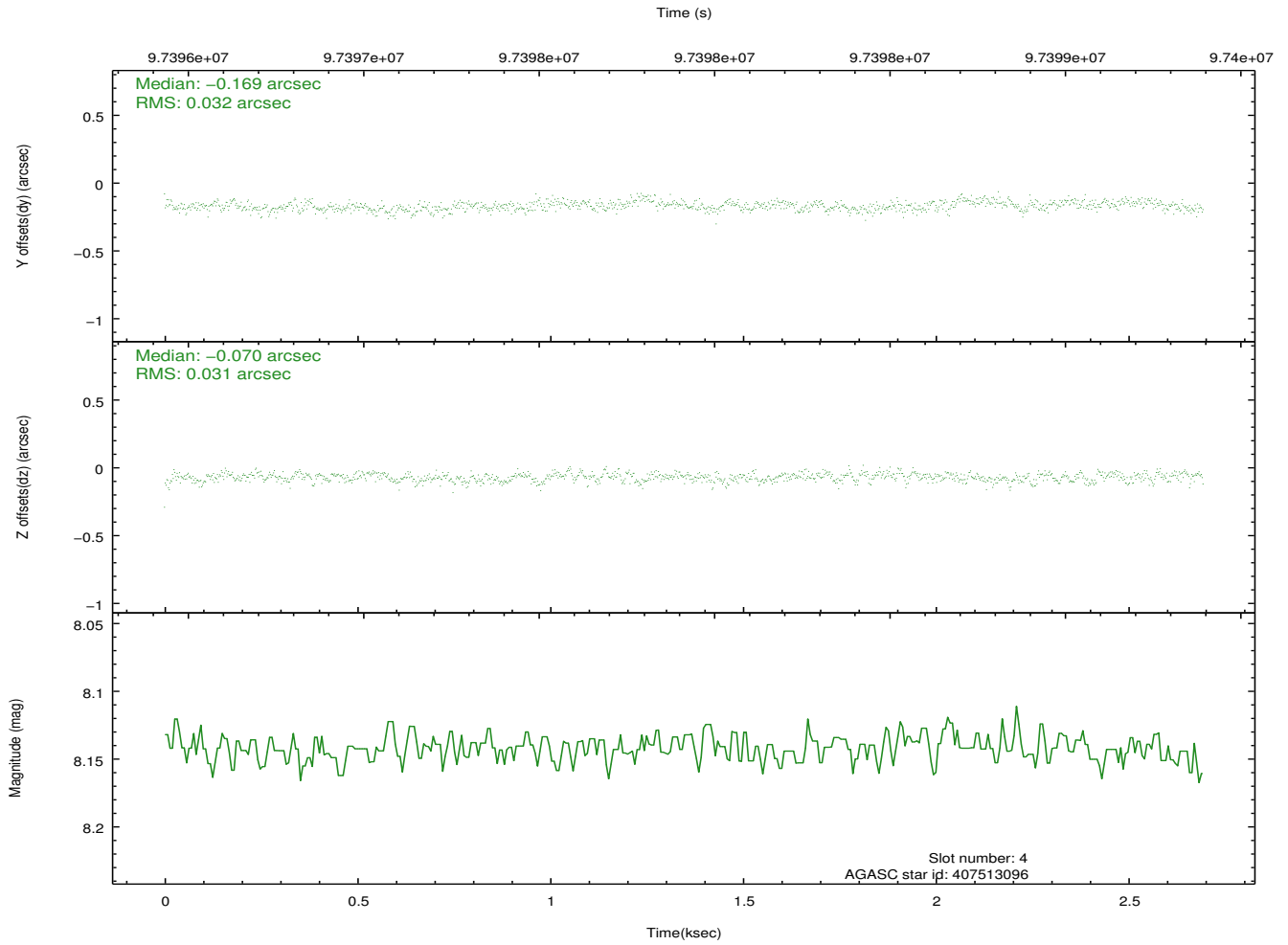
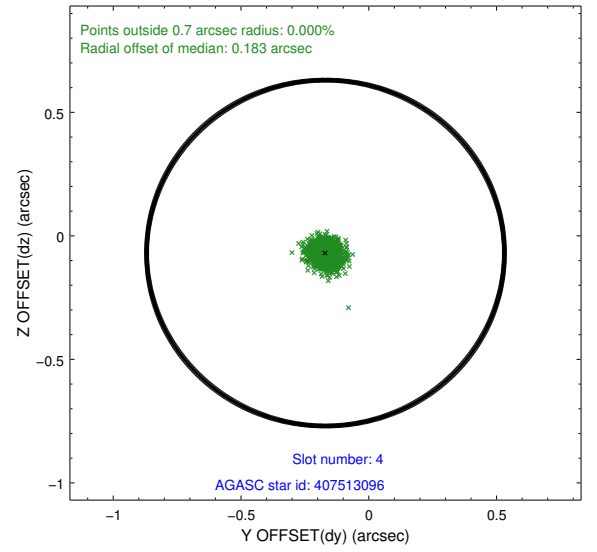
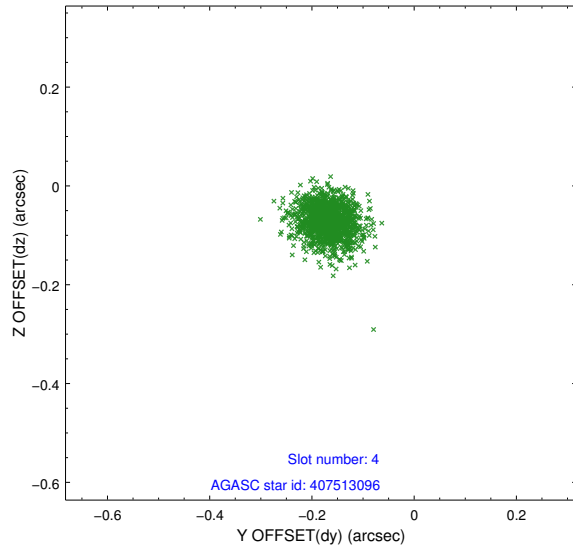
slot	status	id	mag	n_pts	med_dy	med_dz	dr1	dr2	ra	dec	mean_y	mean_z
0	FID	HRC-S-1	6.97	657	0.102	-0.089	0.007	0.015	0.000000	0.000000	-1156.85	-455.51
1	FID	HRC-S-3	7.00	657	0.153	-0.120	0.010	0.020	0.000000	0.000000	-1161.32	573.29
2	FID	HRC-S-4	6.93	657	0.132	-0.088	0.005	0.010	0.000000	0.000000	1239.64	577.52
3	GUIDE	406985120	7.42	1315	0.036	-0.033	0.063	0.105	278.839732	38.894839	-1757.41	1050.67
4	GUIDE	407513096	8.14	1315	-0.169	-0.070	0.046	0.078	279.928965	39.436841	1839.61	734.56
5	GUIDE	406989616	8.23	1315	0.075	0.062	0.062	0.099	279.202881	38.520843	-1779.55	-637.81
6	GUIDE	407521232	8.64	1315	0.018	-0.007	0.064	0.102	279.628883	39.431715	1166.39	1226.35
7	GUIDE	406983600	8.92	1314	0.043	0.055	0.062	0.101	279.940957	39.020708	959.20	-476.11

2.4 Star Slots

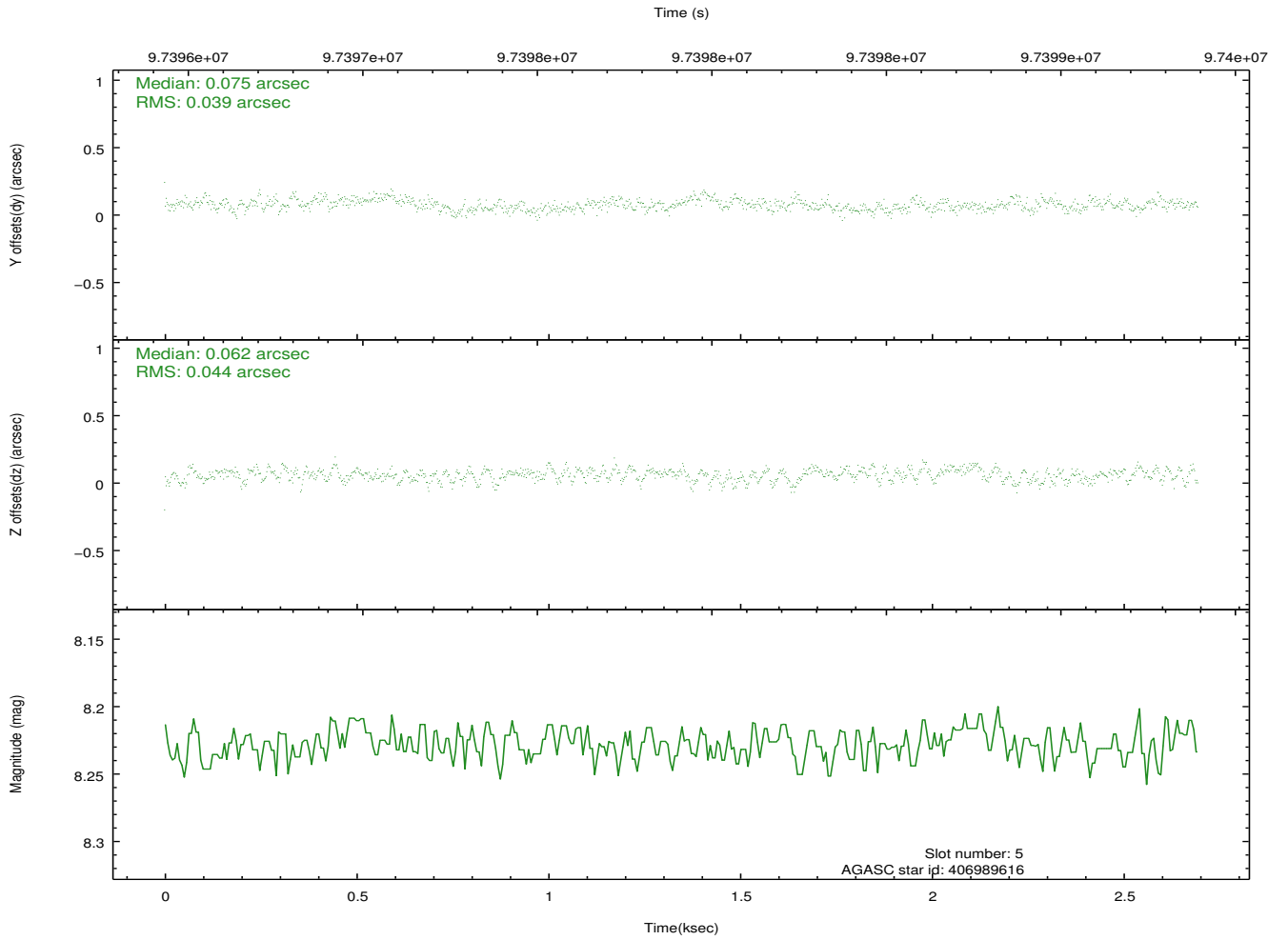
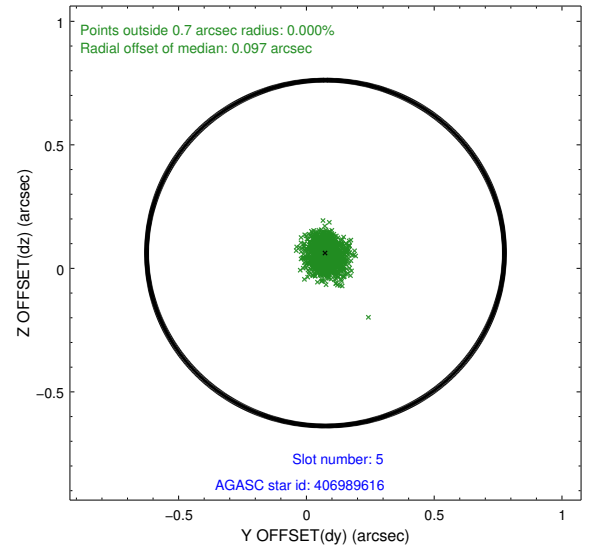
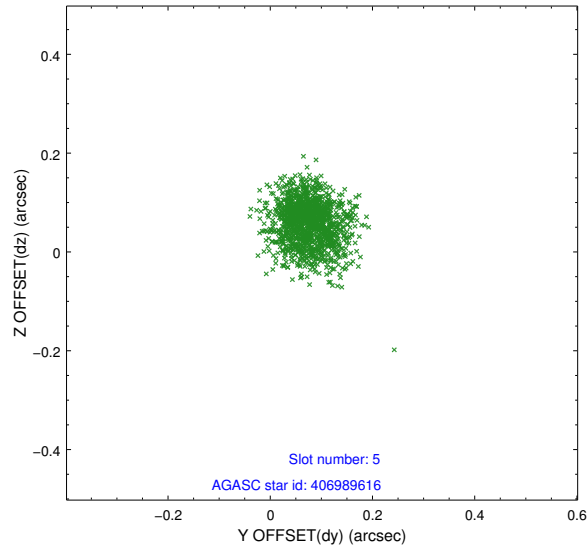
2.4.1 Slot 3



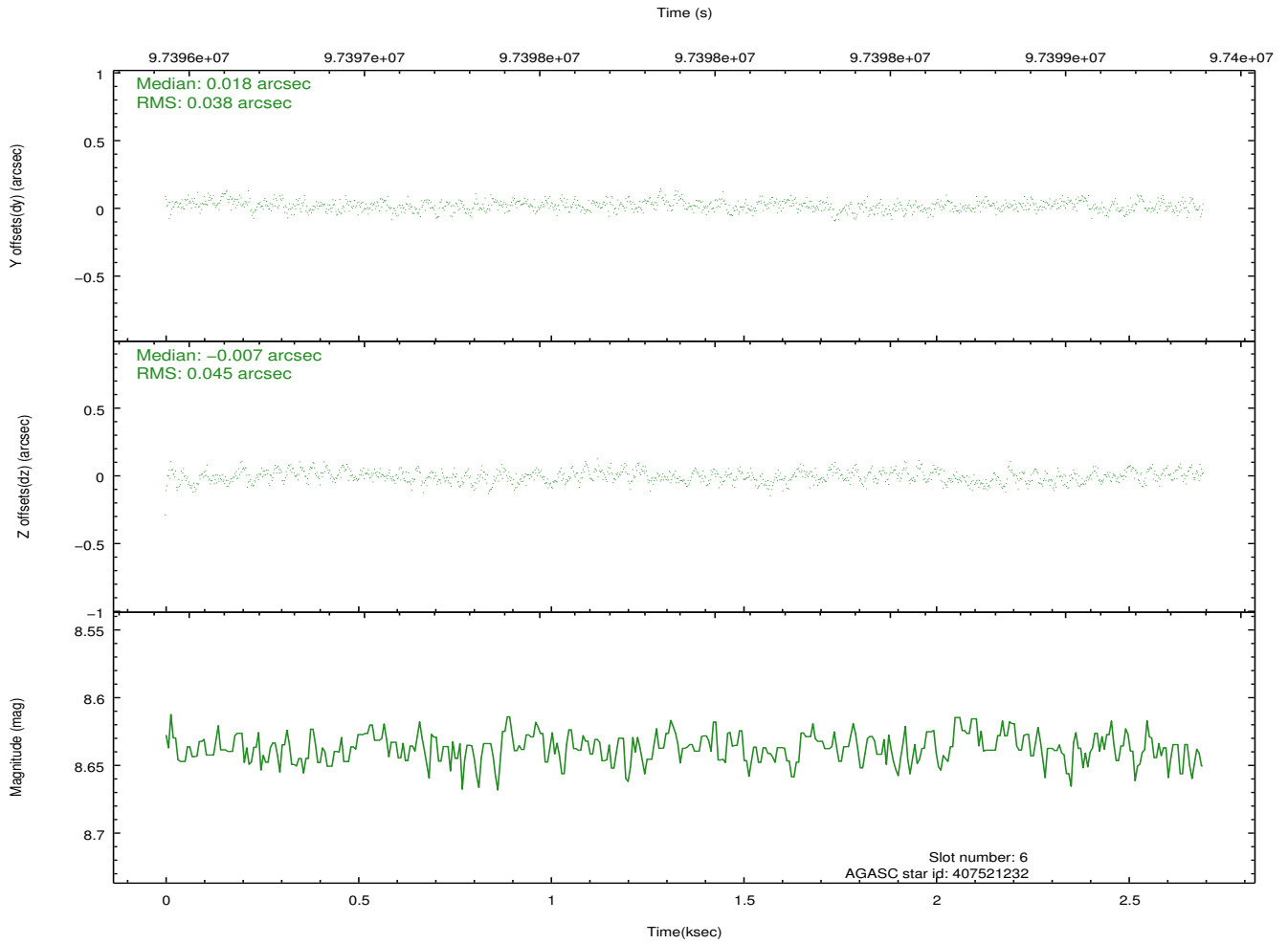
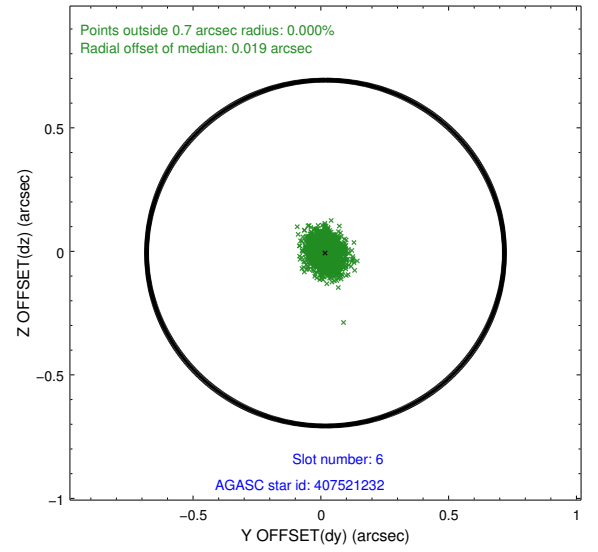
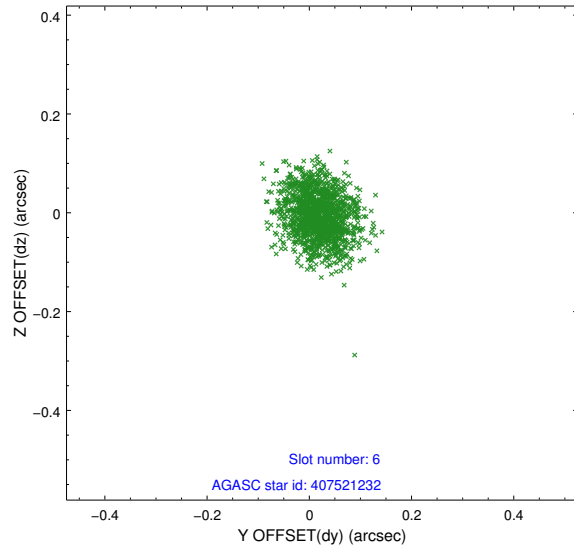
2.4.2 Slot 4



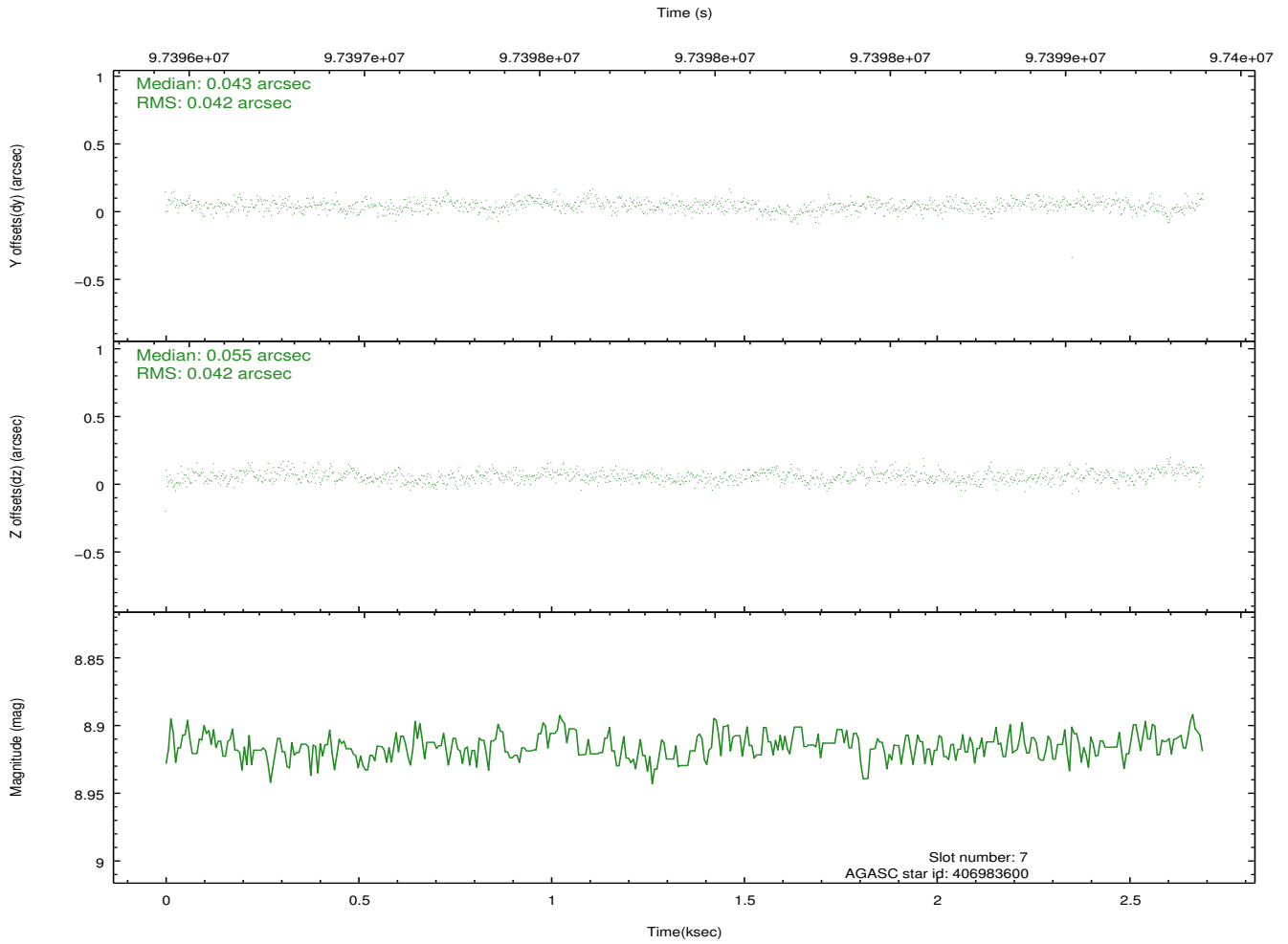
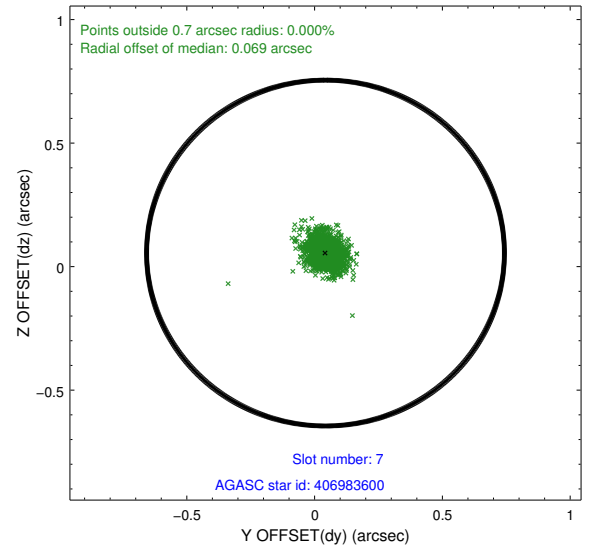
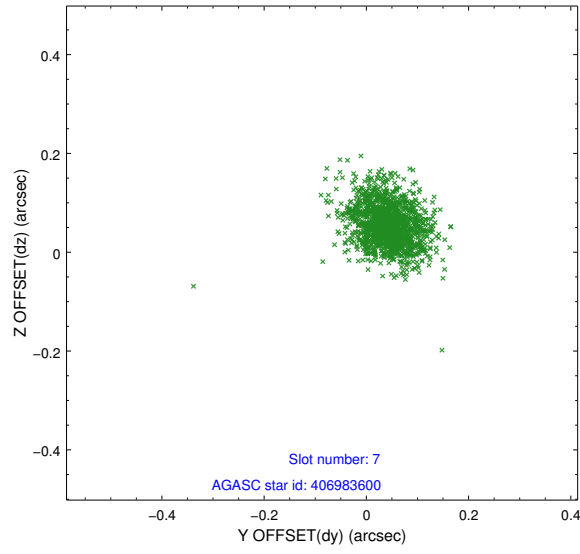
2.4.3 Slot 5



2.4.4 Slot 6

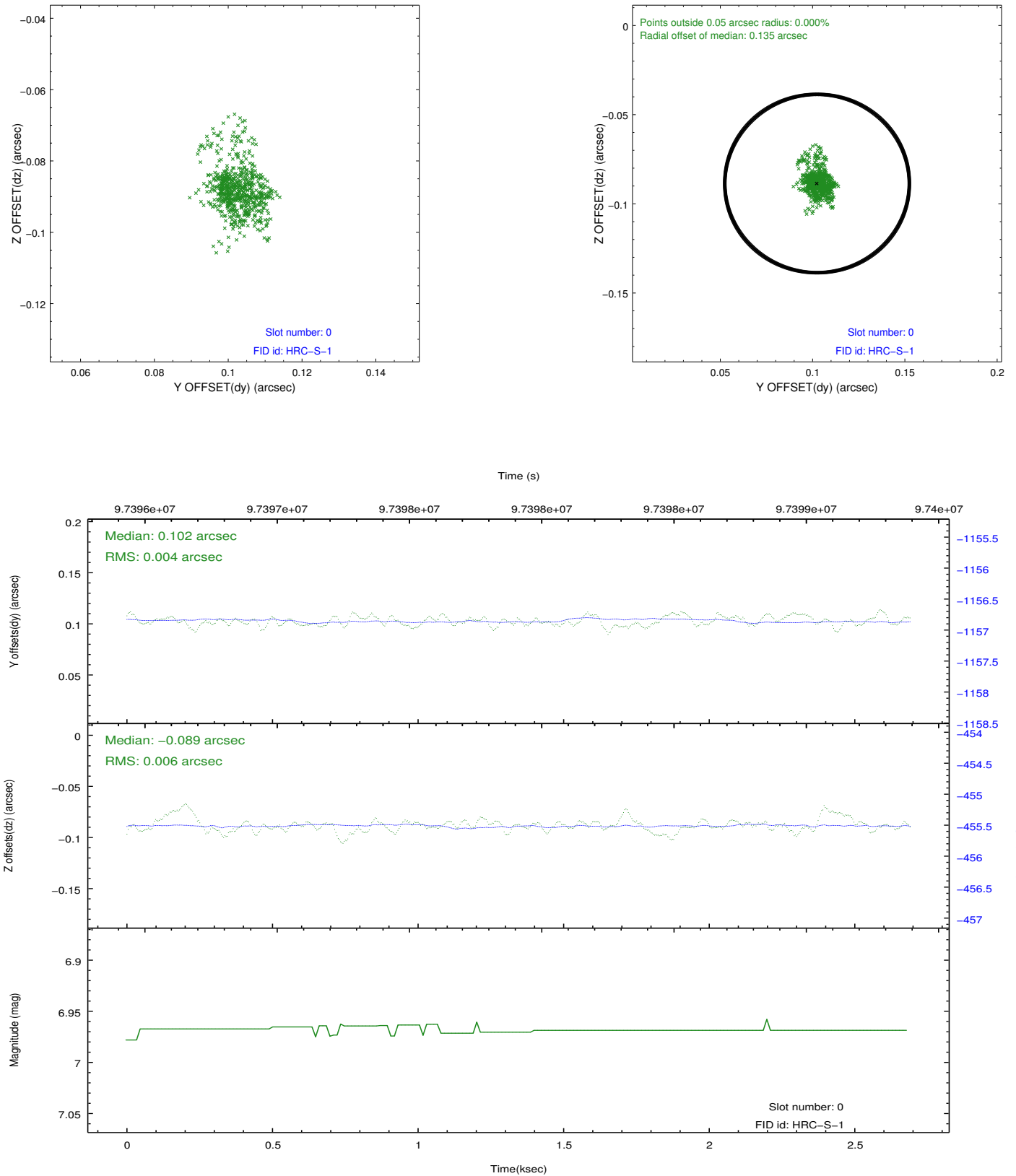


2.4.5 Slot 7

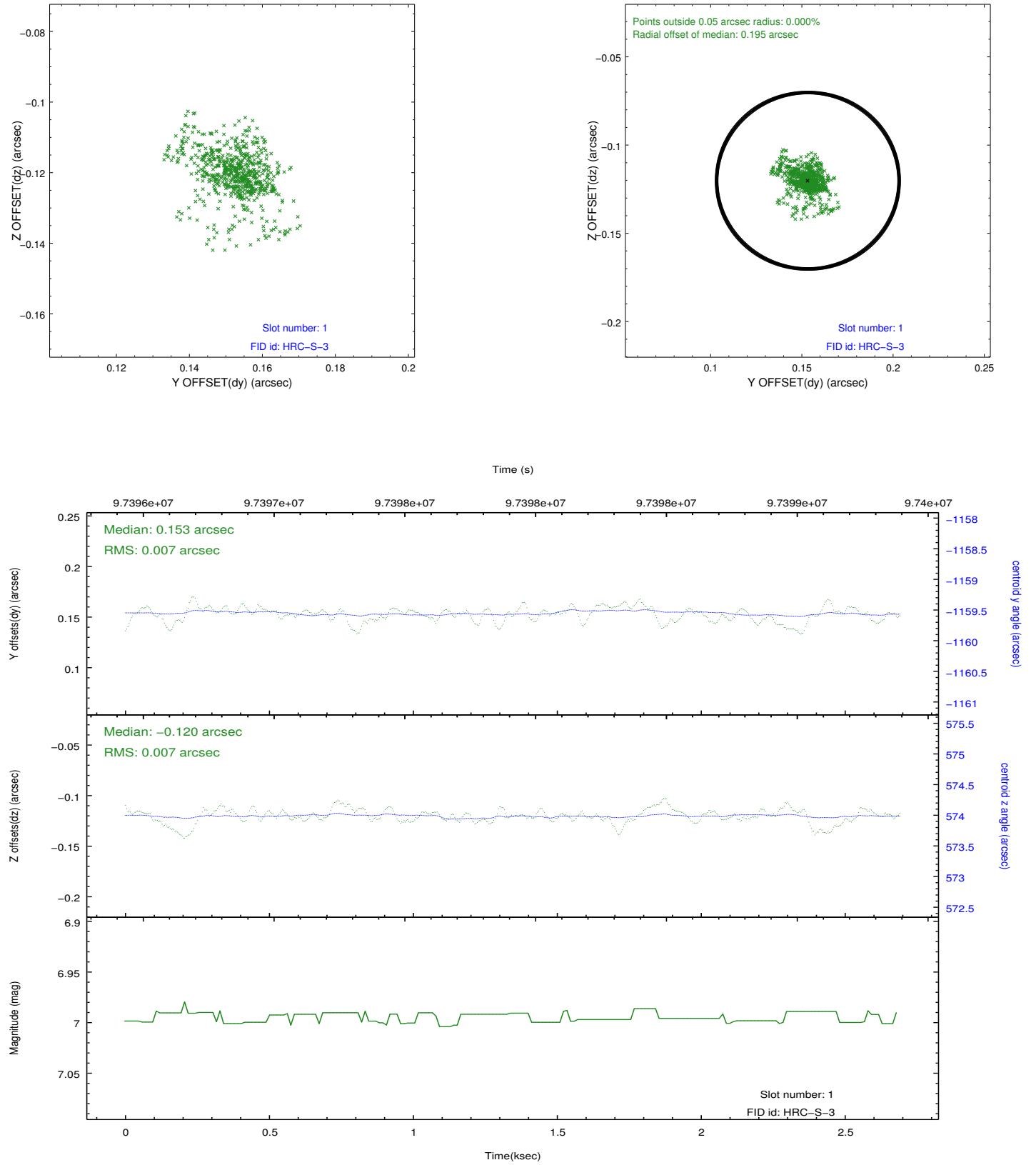


2.5 FID Slots

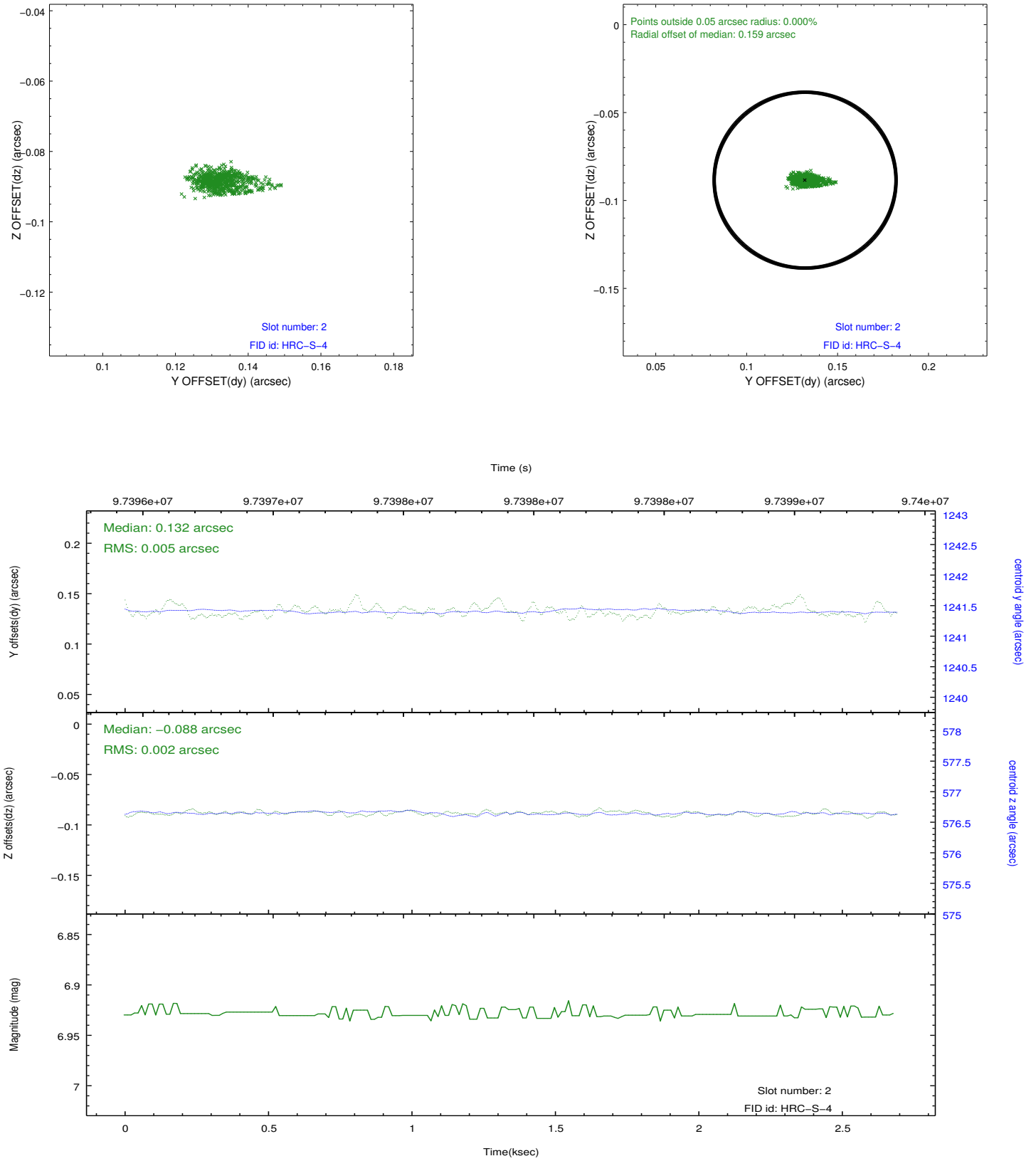
2.5.1 Slot 0



2.5.2 Slot 1



2.5.3 Slot 2



A Summary

A.1 Status

V&V Scientist	Jen Lauer
V&V Date (YYYY-MM-DD)	2012.09.17
V&V Edition	1
V&V Disposition and Status	OK
V&V Charge Time	2.69

A.2 Comments

Window constraint met. The target is far off-axis and therefore extended and asymmetric. Additionally, there are internal reflections from the telescope falling onto the detector.