

# V&V Reference Report

## L2 ASCDS Version : 8.4.5

Observation 984 - L2 Version 3  
Chandra X-Ray Center

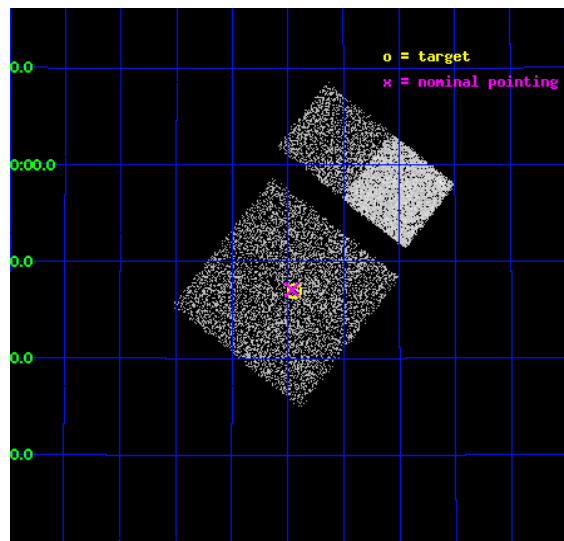
L2 Processing Date : Sep 7 2012

## Contents

<b>1</b>	<b>Front</b>	<b>2</b>
<b>2</b>	<b>OBI</b>	<b>3</b>
2.1	OBI . . . . .	3
2.1.1	Images . . . . .	3
2.1.2	Bias . . . . .	3
2.1.3	Parameters . . . . .	4
2.1.4	Events . . . . .	4
2.2	Compared Parameters . . . . .	5
2.3	Aspect . . . . .	6
2.4	Star Slots . . . . .	9
2.4.1	Slot 3 . . . . .	9
2.4.2	Slot 4 . . . . .	10
2.4.3	Slot 5 . . . . .	11
2.4.4	Slot 6 . . . . .	12
2.4.5	Slot 7 . . . . .	13
2.5	FID Slots . . . . .	14
2.5.1	Slot 0 . . . . .	14
2.5.2	Slot 1 . . . . .	15
2.5.3	Slot 2 . . . . .	16
<b>A</b>	<b>Summary</b>	<b>17</b>
A.1	Status . . . . .	17
A.2	Comments . . . . .	17

# 1 Front

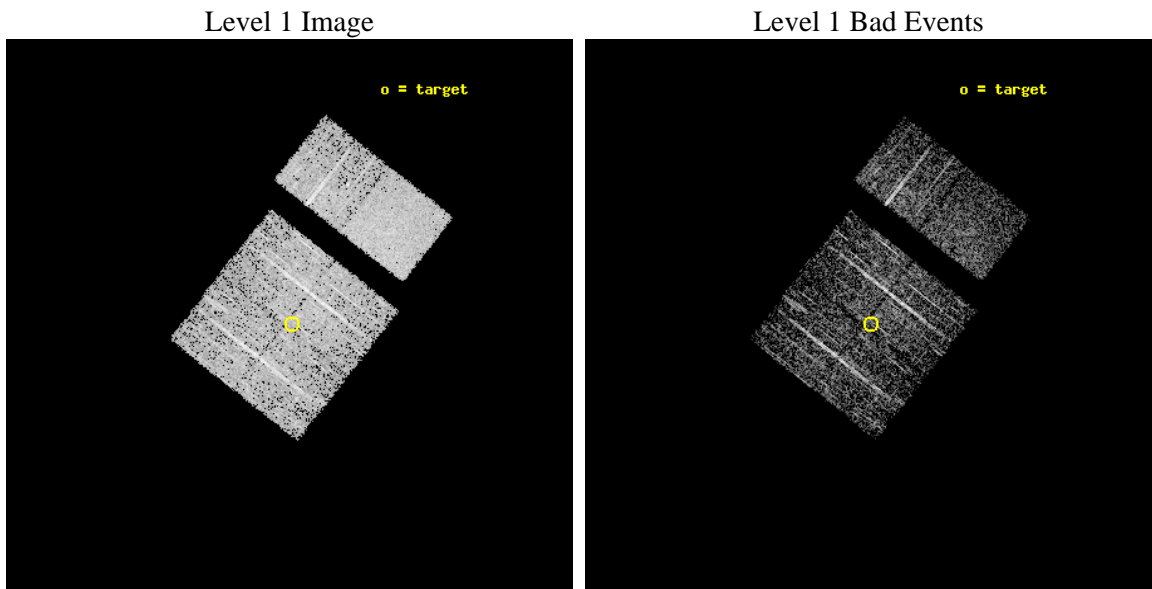
seq_num	290065	Sequence number
obs_id	984	Observation id
title	CALIBRATION OBSERVATIONS OF VEGA TO MONITOR THE TRANSMISSION OF THE OPTICAL/UV FILTERS ON ACIS AND HRC	Proposal title
observer	Dr. CXC Calibration	Principal investigator
object	VEGA, ACIS-I, AO2	Source name
dtcycle	0	&#160
cycle	P	events from which exps? Prim/Second/Both
ra_targ	279.234792	Observer's specified target RA [deg]
dec_targ	38.783778	Observer's specified target Dec [deg]
ra_nom	279.24082072419	Nominal RA [deg]
dec_nom	38.785026677126	Nominal Dec [deg]
roll_nom	38.215655836644	Nominal Roll [deg]
revision	3	Processing version of data
ontime	2940.8000027239	Sum of GTIs [s]
livetime	2903.5618223523	Livetime [s]
ontime0	2940.8000027239	Sum of GTIs [s]
ontime1	2940.8000027239	Sum of GTIs [s]
ontime2	2940.8000027239	Sum of GTIs [s]
ontime3	2940.8000027239	Sum of GTIs [s]
ontime6	2940.8000027239	Sum of GTIs [s]
ontime7	2940.8000027239	Sum of GTIs [s]
l2events	19276	Number of level 2 events



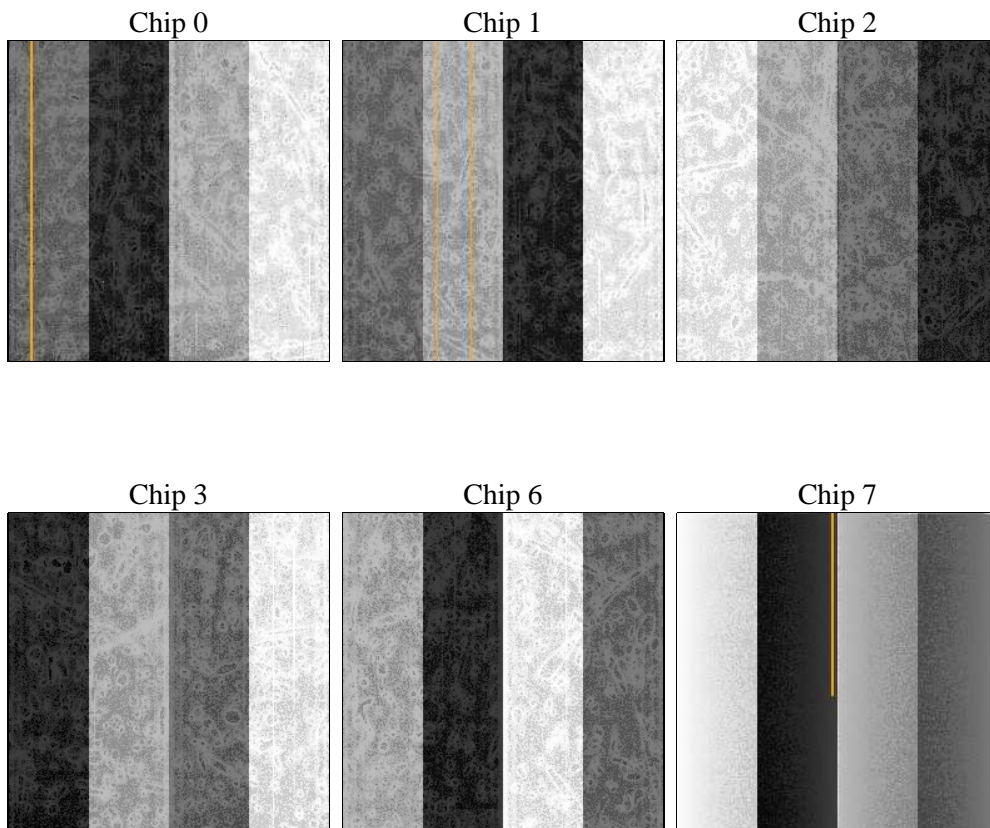
## 2 OBI

### 2.1 OBI

#### 2.1.1 Images



#### 2.1.2 Bias



### 2.1.3 Parameters

obi_num	0	Obi number	sched_exp_time	3000.000000	[s] Scheduled observation exposure time
ascdsver	8.4.5	Processing system revision	ontime	2940.8000027239	Sum of GTIs [s]
caldsver	4.5.1.1	&#160	ontime0	2940.8000027239	Sum of GTIs [s]
date	2012-09-07T05:28:47	Date and time of file creation	ontime1	2940.8000027239	Sum of GTIs [s]
revision	3	Processing version of data	ontime2	2940.8000027239	Sum of GTIs [s]
			ontime3	2940.8000027239	Sum of GTIs [s]
			ontime6	2940.8000027239	Sum of GTIs [s]
			ontime7	2940.8000027239	Sum of GTIs [s]
			l1events	107901	Number of level 1 events

### 2.1.4 Events

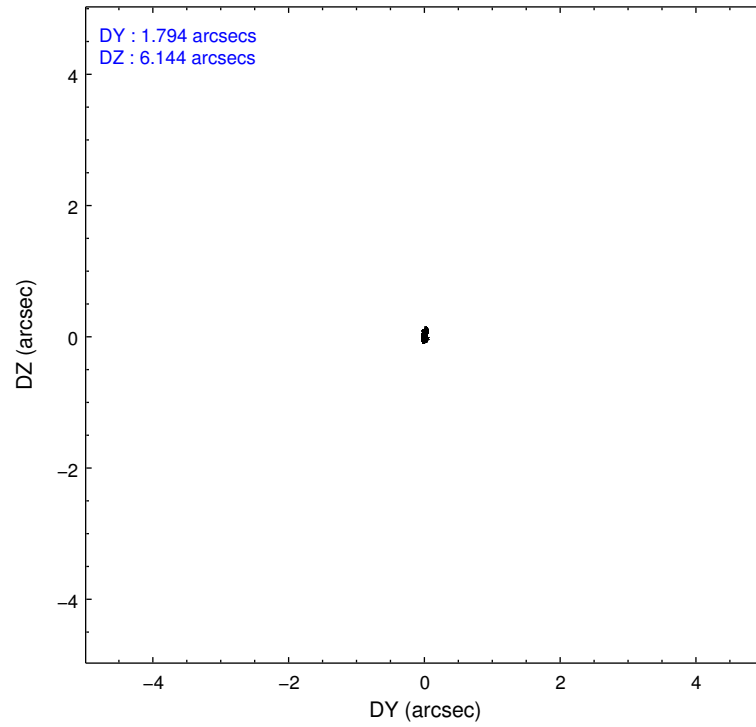
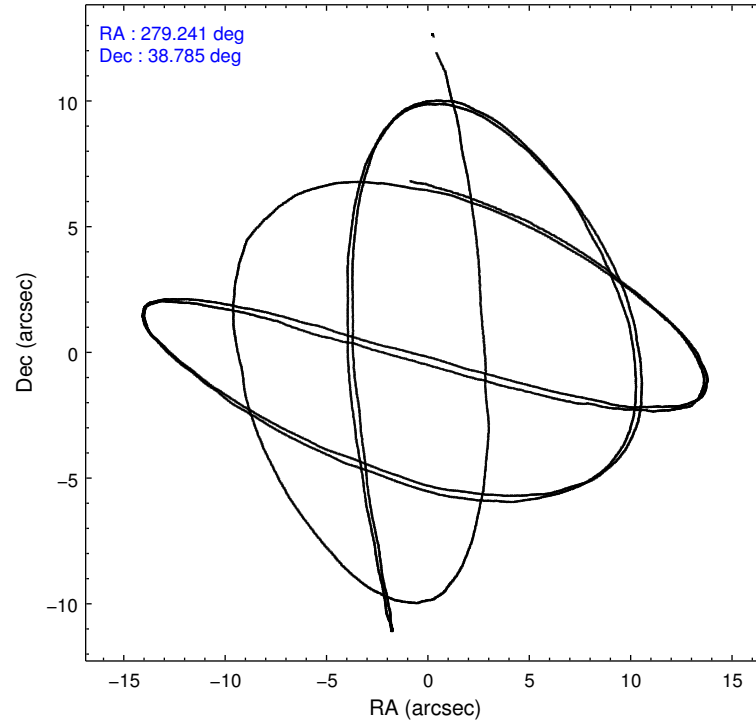
	ccd 0	ccd 1	ccd 2	ccd 3	ccd 6	ccd 7		ccd 0	ccd 1	ccd 2	ccd 3	ccd 6	ccd 7
level 1 events	16329	15888	17577	18028	17639	22440	grade 0 events	944	971	1033	946	1118	1002
rejected events	14029	13517	15298	15785	15122	12844		5%	6%	5%	5%	6%	4%
rejected %	85%	85%	87%	87%	85%	57%	grade 1 events	2	9	14	8	8	22
								0%	0%	0%	0%	0%	0%
							grade 2 events	521	515	491	491	502	1889
								3%	3%	2%	2%	2%	8%
							grade 3 events	209	216	210	190	211	919
								1%	1%	1%	1%	1%	4%
							grade 4 events	210	218	179	200	261	881
								1%	1%	1%	1%	1%	3%
							grade 5 events	604	681	593	660	736	2150
								3%	4%	3%	3%	4%	9%
							grade 6 events	417	453	367	419	426	4910
								2%	2%	2%	2%	2%	21%
							grade 7 events	13422	12825	14690	15114	14377	10667
								82%	80%	83%	83%	81%	47%

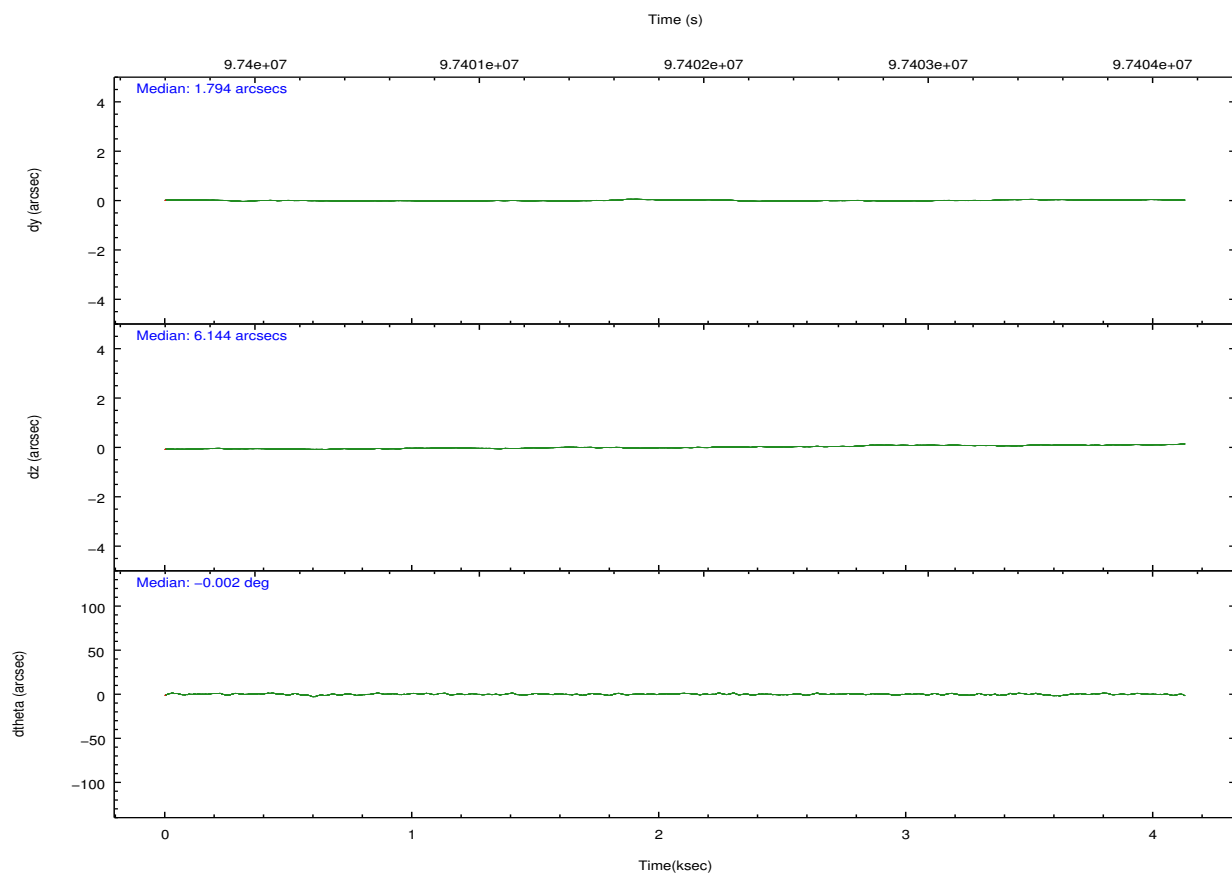
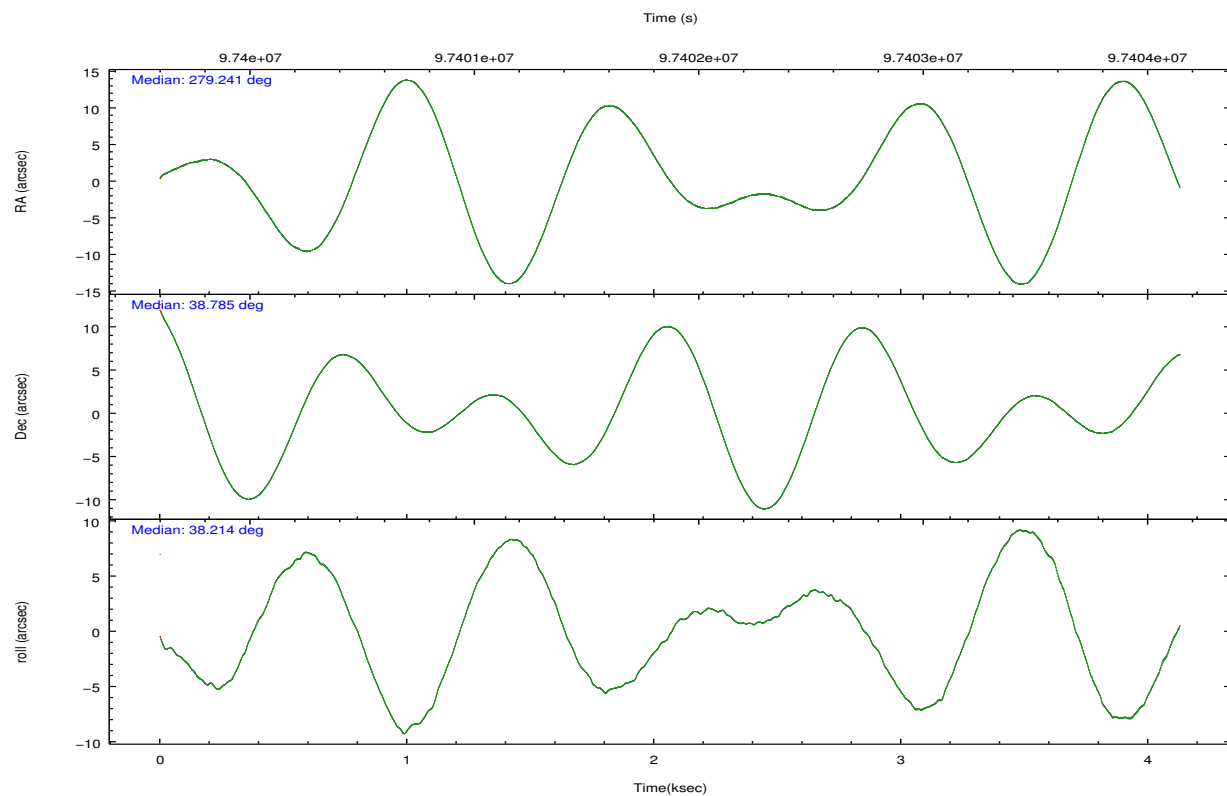


## 2.2 Compared Parameters

Parameter	Planned	Actual	Parameter	Planned	Actual
Instrument	ACIS	ACIS	Obspar format version number	7	7
Detector	ACIS-012367	ACIS-012367	Obspar file type	PREDICTED	ACTUAL
Grating	NONE	NONE	Obspar update status	NONE	UPDATED
Data mode	FAINT	FAINT	Number of optional ACIS chips dropped	0	0
Observation mode	POINTING	POINTING	On-chip summing requested	N	N
[deg] Pointing RA	279.227625	279.2408207241879	Subarray requested	NONE	NONE
[deg] Pointing Dec	38.759522	38.78502667712555	Alternating exposures requested	N	N
[deg] Pointing Roll	38.015240	38.21565583664354	[s] Primary exposure time	0.000000	3.2
[s] Window start time (MET)	97372864.184000	97372864.184000			
[s] Window stop time (MET)	99705664.184000	99705664.184000			
[mm] SIM focus pos	-0.782348	-0.7809083437167272			
[mm] SIM defocus	0	0.001439871863259334			
[mm] SIM translation stage pos	-233.592463	-233.5874344608287			
[mm] SIM translation stage offset	0	-0.005018542100998502			
[s] Observation start time (MET)	97400939.184000	97399513.69268			
Observation start date	2001-02-01T07:47:55	2001-02-01T07:25:13			
[s] Observation end time (MET)	97403939.184000	97404089.29285599			
Observation end date	2001-02-01T08:37:55	2001-02-01T08:41:29			
Read mode	TIMED	TIMED			

## 2.3 Aspect



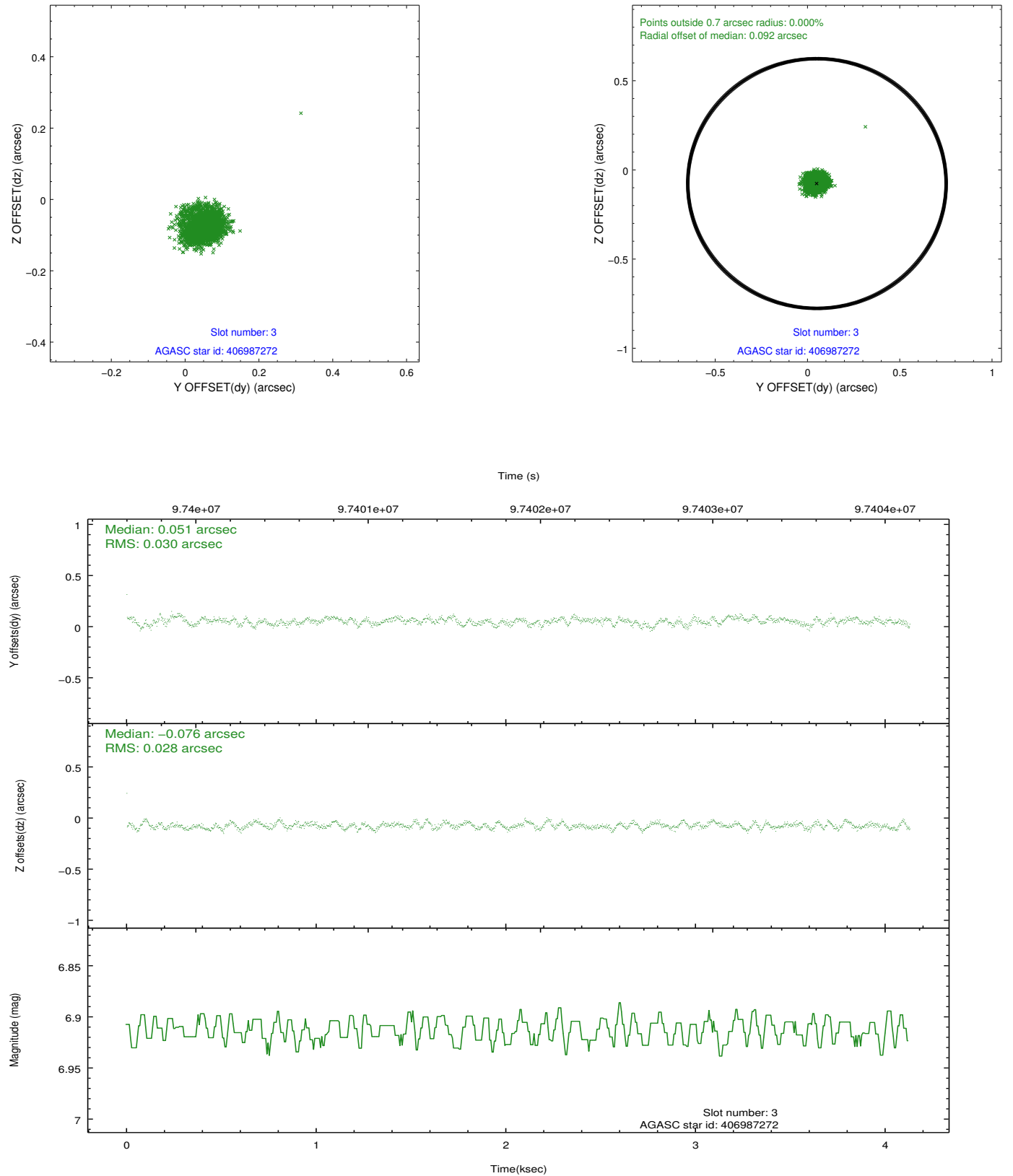


### Slot Statistics

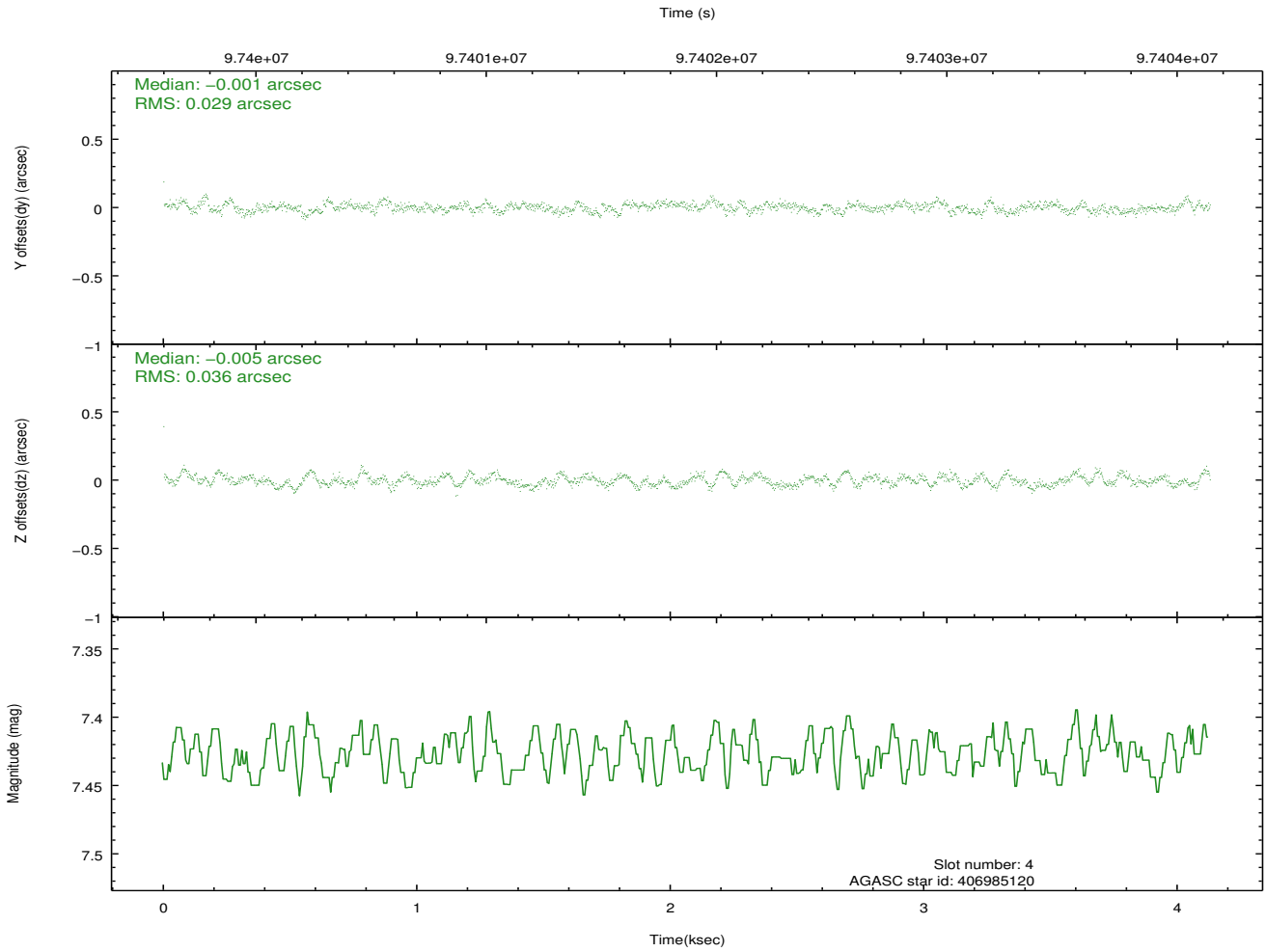
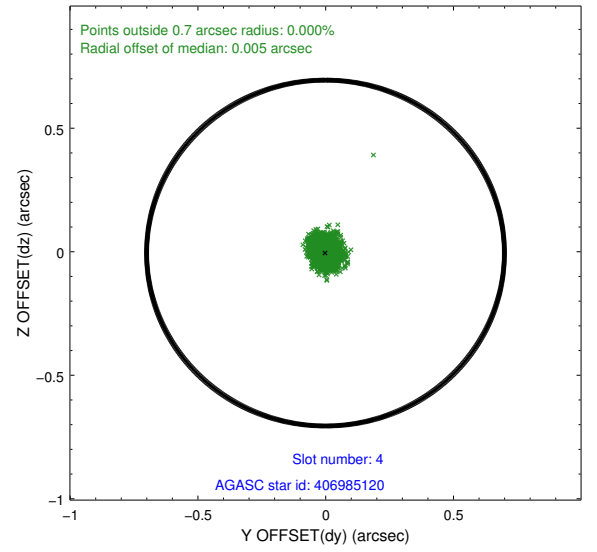
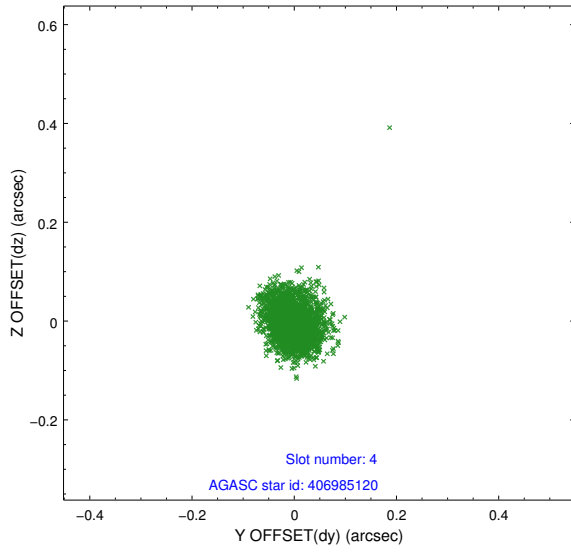
slot	status	id	mag	n_pts	med_dy	med_dz	dr1	dr2	ra	dec	mean_y	mean_z
0	FID	ACIS-I-2	7.15	1008	-0.032	-0.062	0.009	0.016	0.000000	0.000000	-756.17	-835.96
1	FID	ACIS-I-4	7.18	1008	-0.039	0.043	0.006	0.010	0.000000	0.000000	2157.19	1069.58
2	FID	ACIS-I-5	7.23	1008	-0.029	0.088	0.009	0.014	0.000000	0.000000	-1808.06	1069.18
3	GUIDE	406987272	6.91	2015	0.051	-0.076	0.043	0.068	278.536588	38.437504	-2244.72	292.21
4	GUIDE	406985120	7.43	2015	-0.001	-0.005	0.049	0.078	278.839732	38.894839	-556.10	1054.82
5	GUIDE	406993992	7.62	2015	-0.041	0.085	0.060	0.096	279.053714	38.034587	-1995.93	-1751.84
6	GUIDE	406989616	8.23	2015	0.052	0.011	0.053	0.086	279.202881	38.520843	-585.14	-635.17
7	GUIDE	407521232	8.65	2014	-0.056	-0.009	0.070	0.109	279.628883	39.431715	2370.41	1220.83

## 2.4 Star Slots

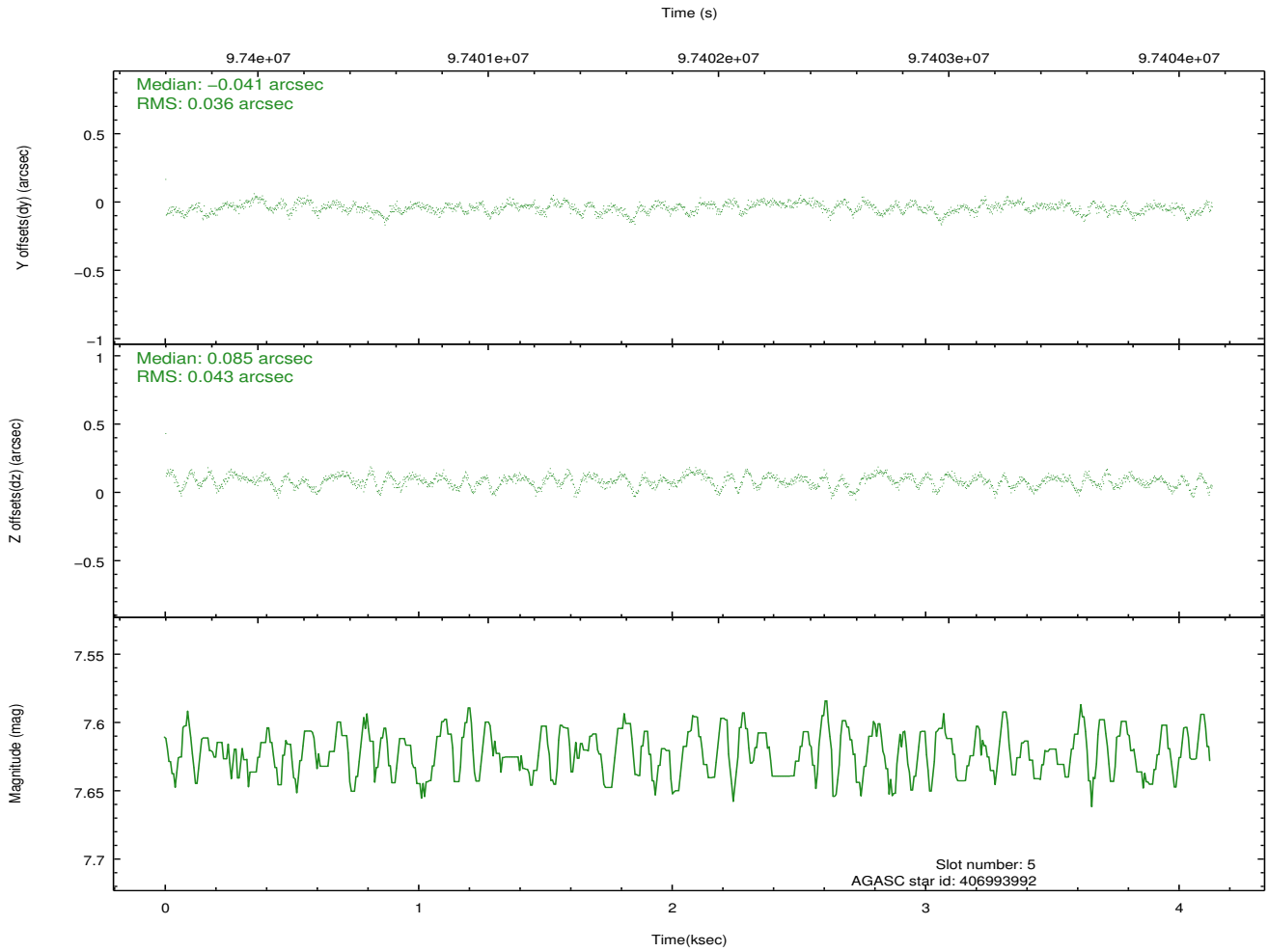
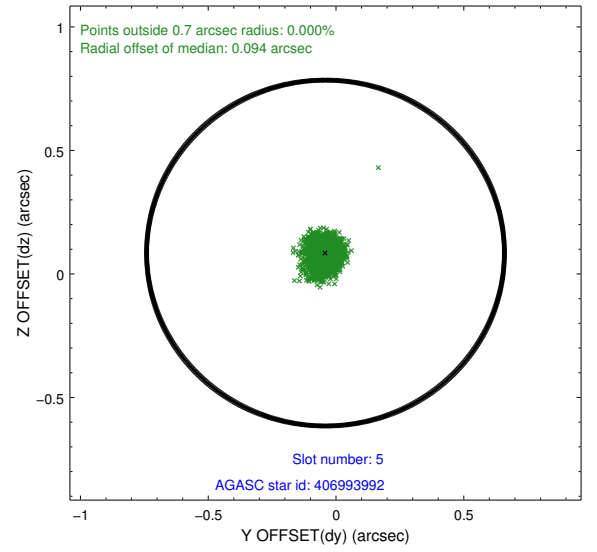
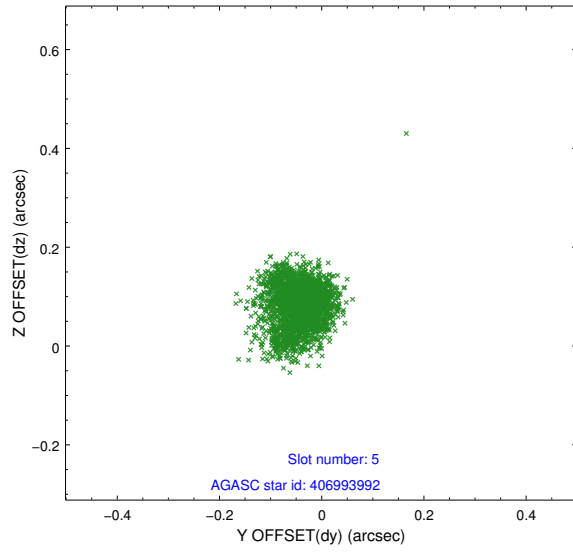
### 2.4.1 Slot 3



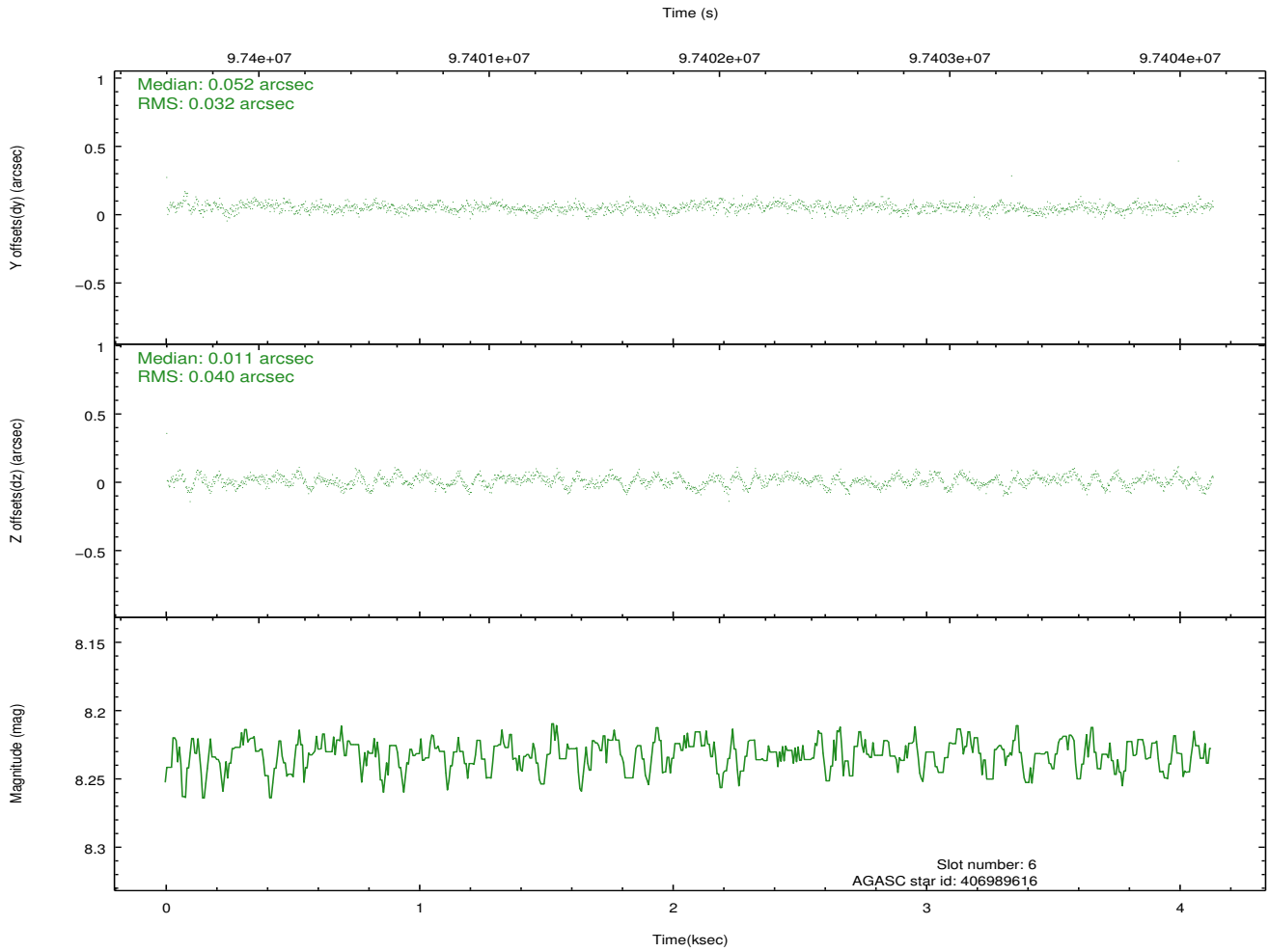
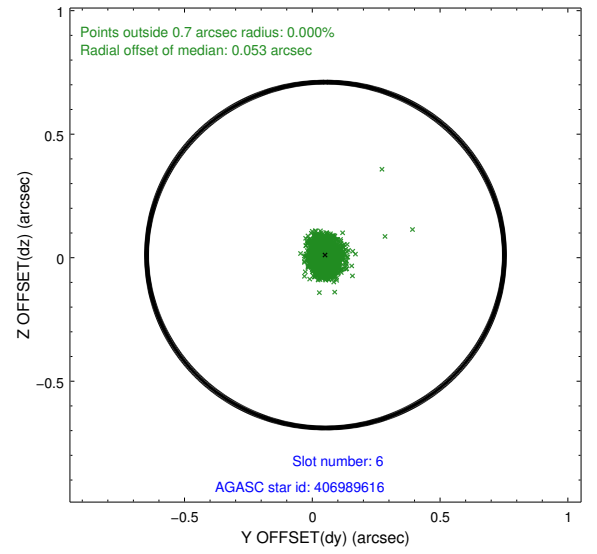
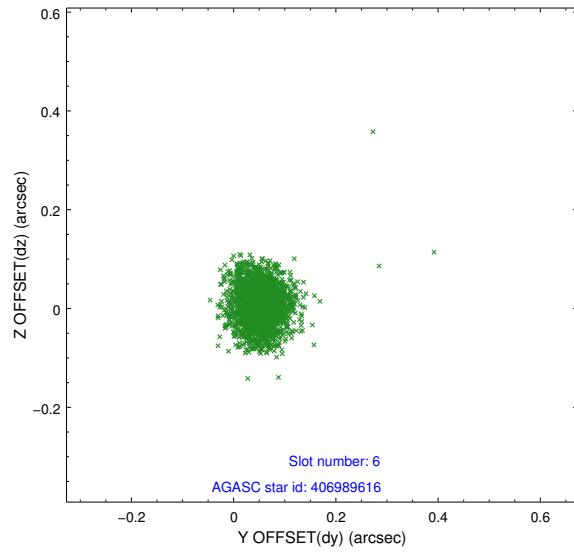
## 2.4.2 Slot 4



### 2.4.3 Slot 5

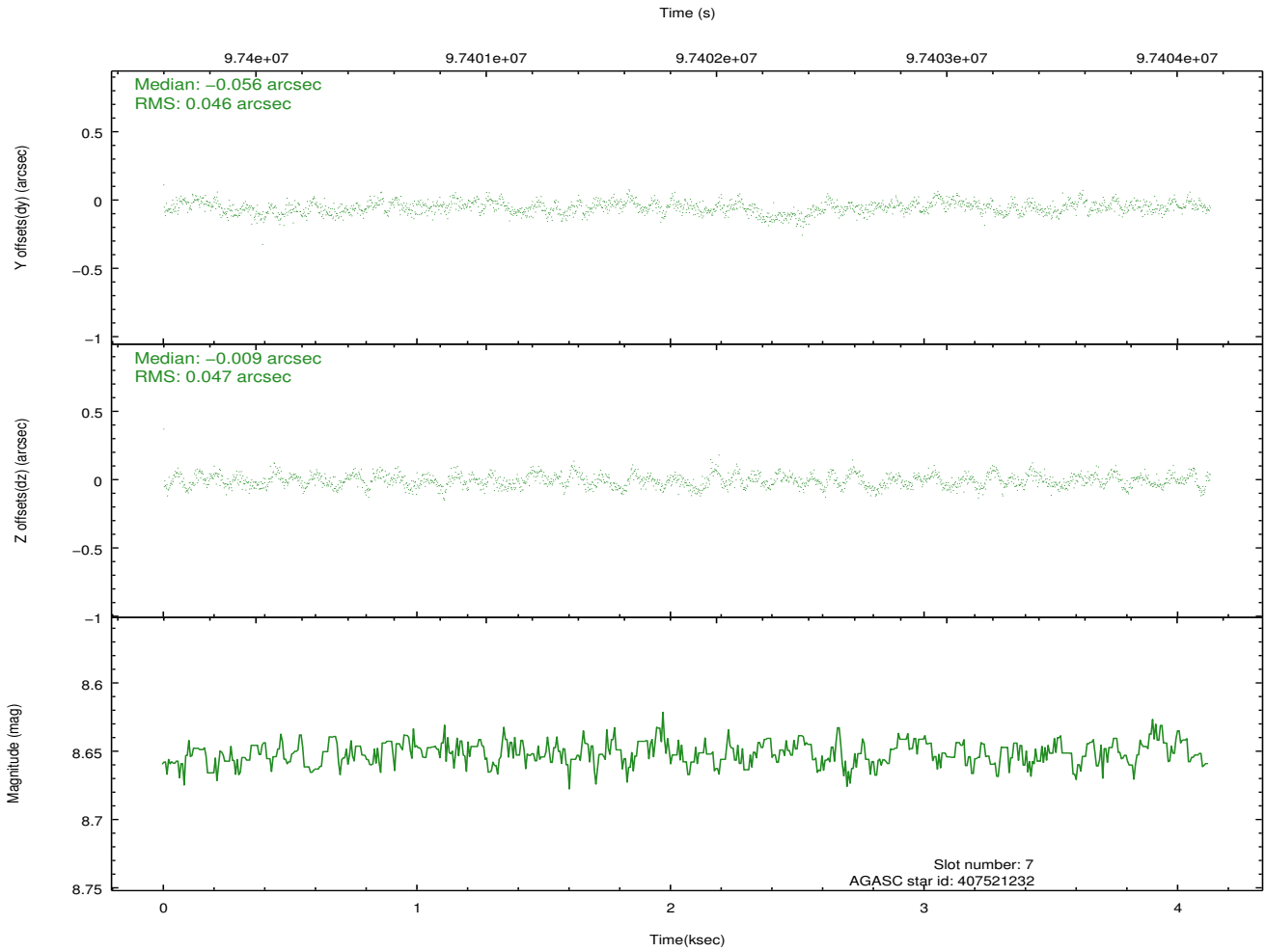
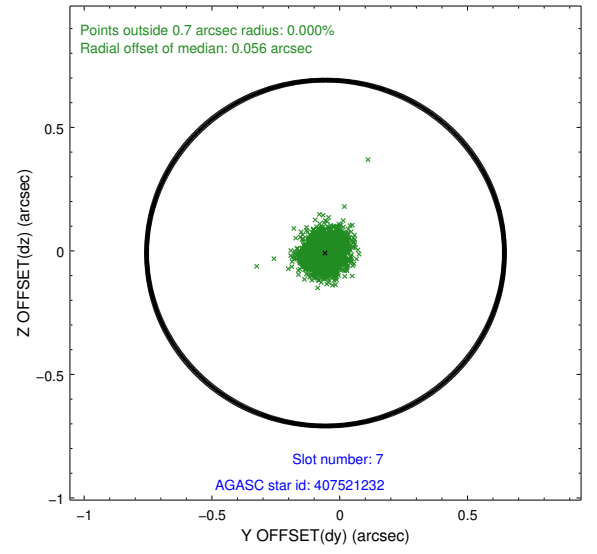
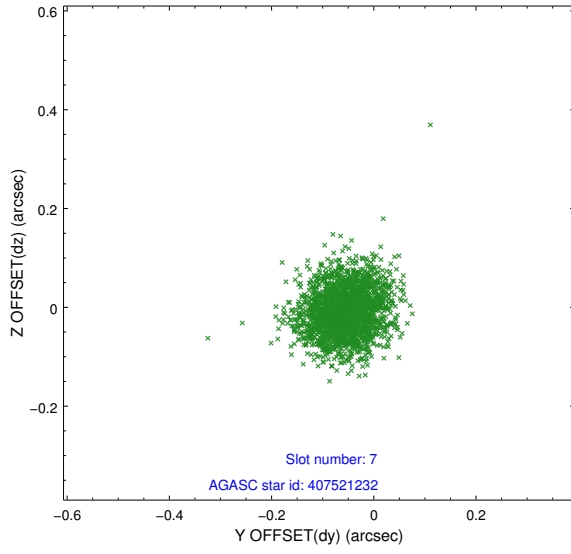


## 2.4.4 Slot 6



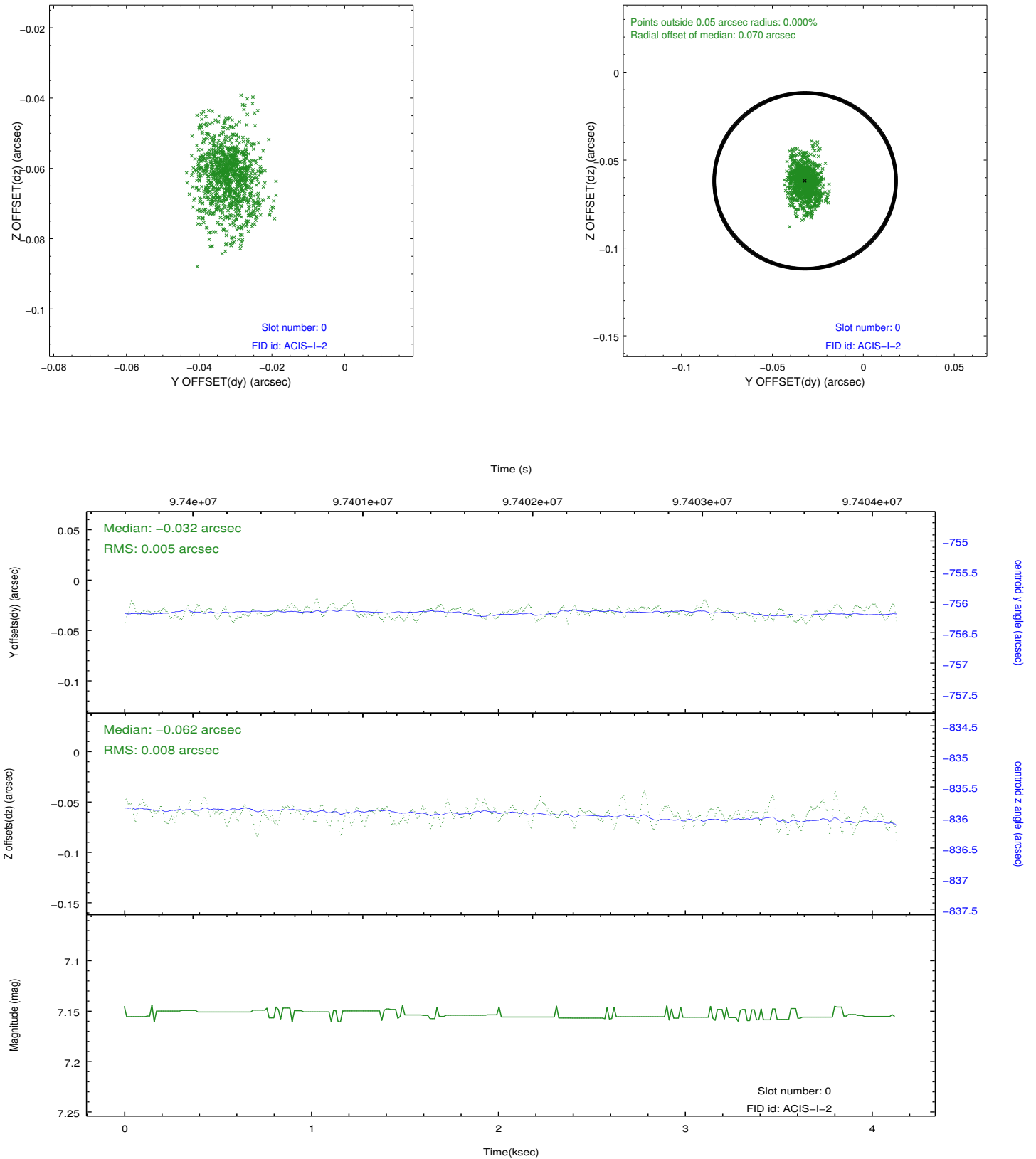


## 2.4.5 Slot 7

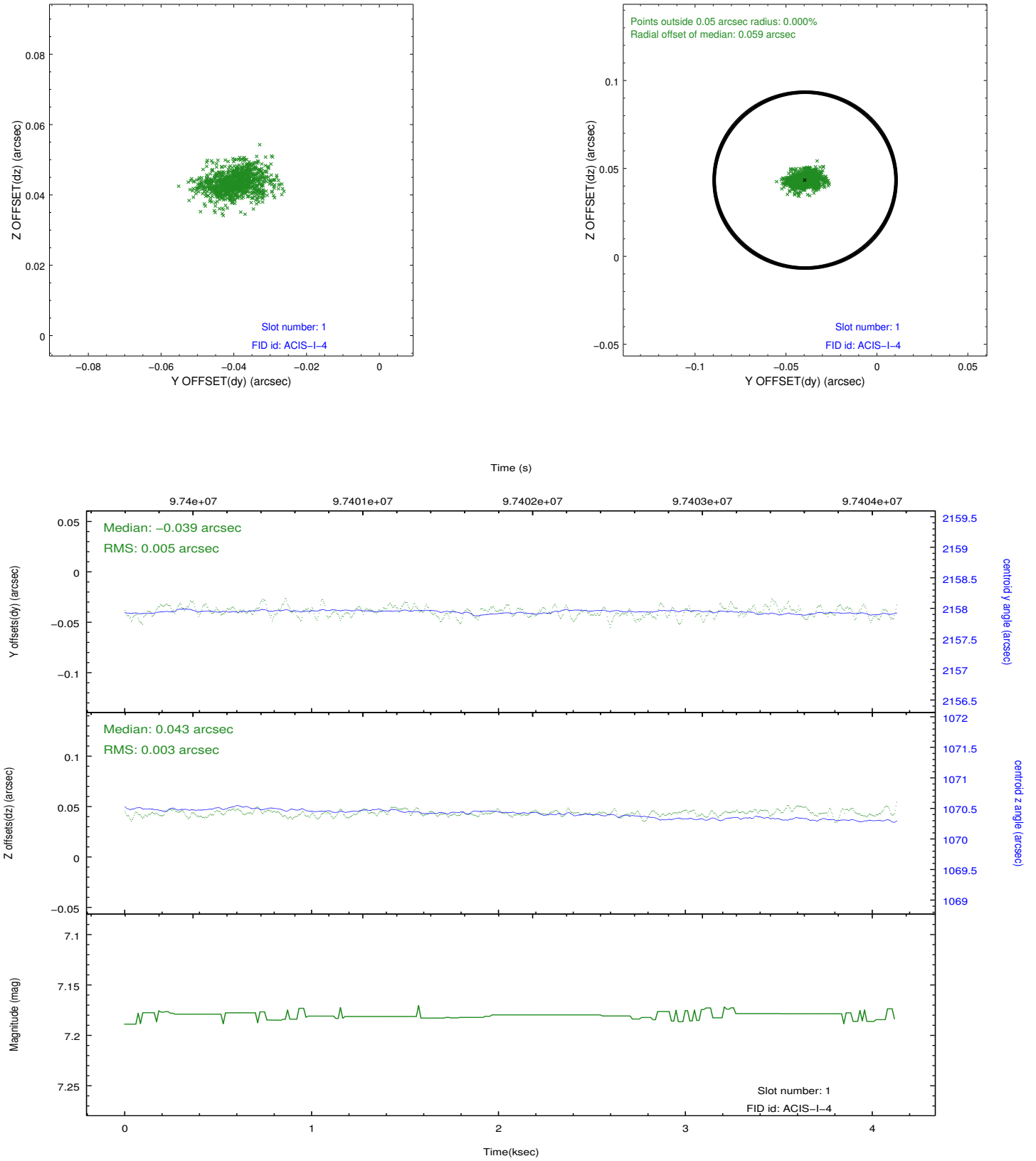


## 2.5 FID Slots

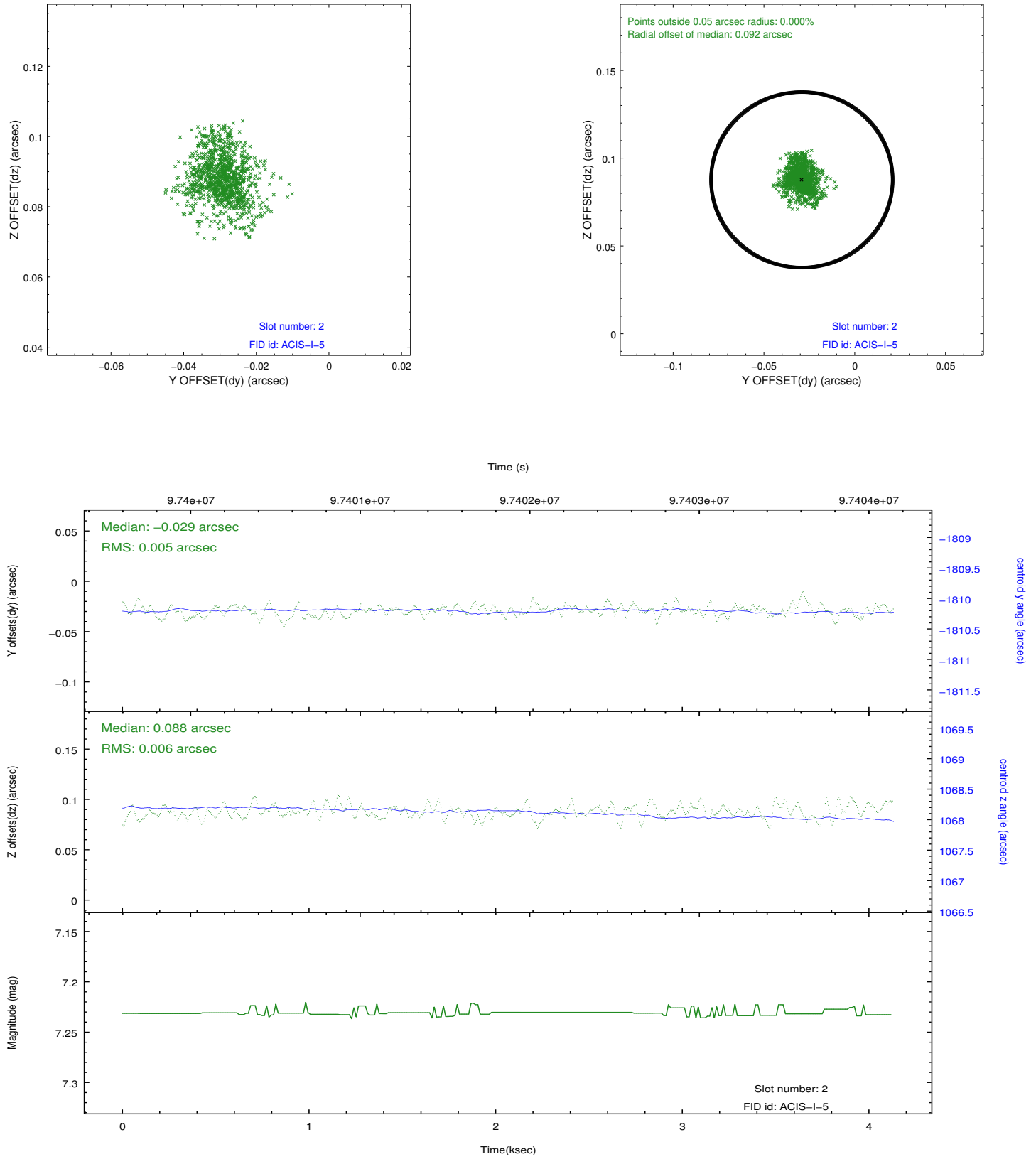
### 2.5.1 Slot 0



## 2.5.2 Slot 1



### 2.5.3 Slot 2



# A Summary

## A.1 Status

V&V Scientist	Beth Sundheim
V&V Date (YYYY-MM-DD)	2012.09.17
V&V Edition	1
V&V Disposition and Status	OK
V&V Charge Time	2.944

## A.2 Comments

Charge time for this observation remains at previous value of 2.944 ksec.

Window preference met.