

V&V Reference Report

L2 ASCDS Version : 8.4.5

Observation 2360 - L2 Version 6
Chandra X-Ray Center

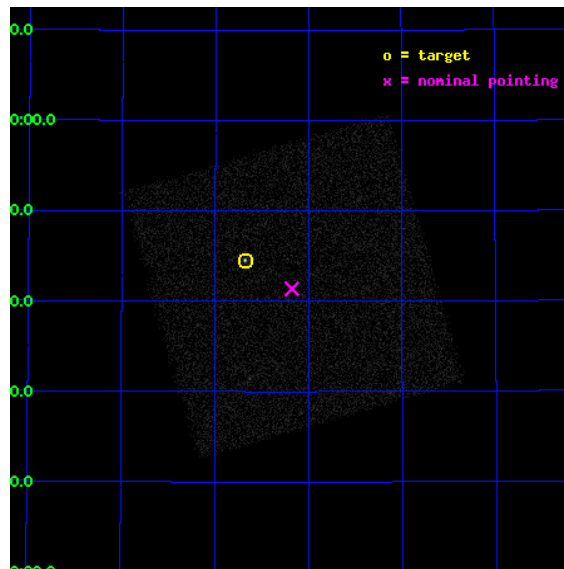
L2 Processing Date : Sep 4 2012

Contents

1	Front	2
2	OBI	3
2.1	OBI	3
2.1.1	Images	3
2.1.2	Parameters	4
2.1.3	Events	4
2.2	Compared Parameters	5
2.3	Aspect	6
2.4	Star Slots	9
2.4.1	Slot 3	9
2.4.2	Slot 4	10
2.4.3	Slot 5	11
2.4.4	Slot 6	12
2.4.5	Slot 7	13
2.5	FID Slots	14
2.5.1	Slot 0	14
2.5.2	Slot 1	15
2.5.3	Slot 2	16
A	Summary	17
A.1	Status	17
A.2	Comments	17

1 Front

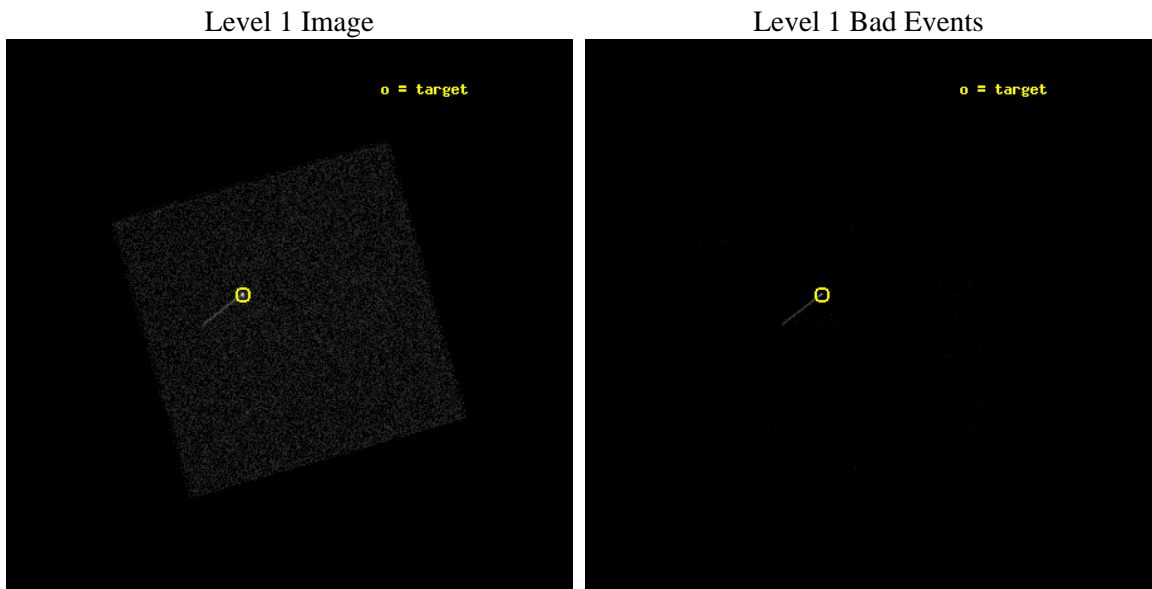
seq_num	290107	Sequence number
obs_id	2360	Observation id
title	HRC-I CALIBRATION OBSERVATIONS OF ARLAC	Proposal title
observer	Dr. CXC Calibration	Principal investigator
object	ARLAC,HRC-I,AO2A	Source name
ra_targ	332.17	Observer's specified target RA [deg]
dec_targ	45.742306	Observer's specified target Dec [deg]
ra_nom	332.04451692321	Nominal RA [deg]
dec_nom	45.68981676227	Nominal Dec [deg]
roll_nom	298.88789729845	Nominal Roll [deg]
revision	6	Processing version of data
ontime	1200.5312959105	[s]
livetime	1194.5664328645	Ontime multiplied by DTCOR
l2events	35374	Number of level 2 events



2 OBI

2.1 OBI

2.1.1 Images



2.1.2 Parameters

obi_num	0	Obi number	sched_exp_time	1000.000000	[s] Scheduled observation exposure time
ascdsver	8.4.5	Processing system revision	ontime	1200.5312959105	[s]
caldbver	4.5.1.1	 	l1events	61546	Number of level 1 events
date	2012-09-04T06:20:54	Date and time of file creation			
revision	5	Processing version of data			

2.1.3 Events

Level 1 Events

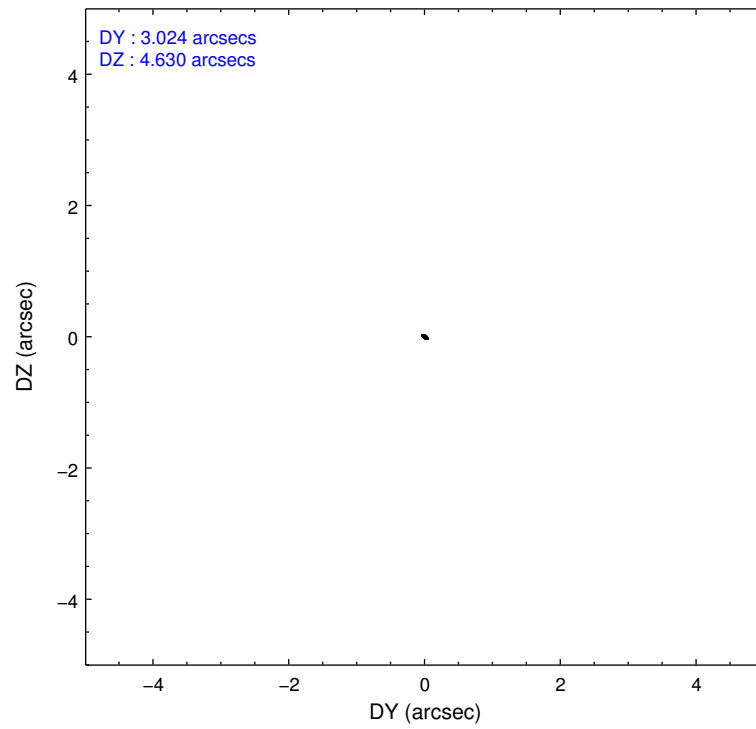
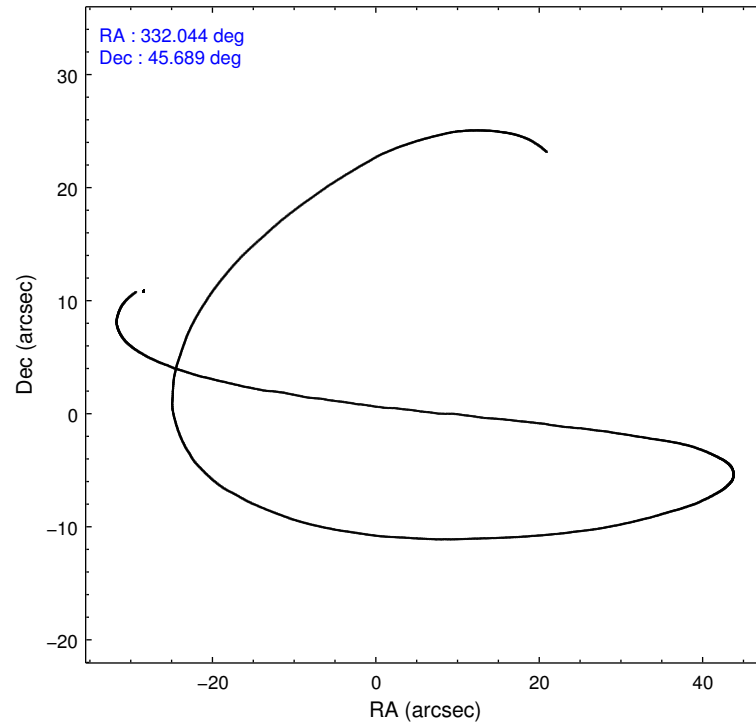
	segment 0
level 1 events	61546
rejected events	12535
rejected %	20%

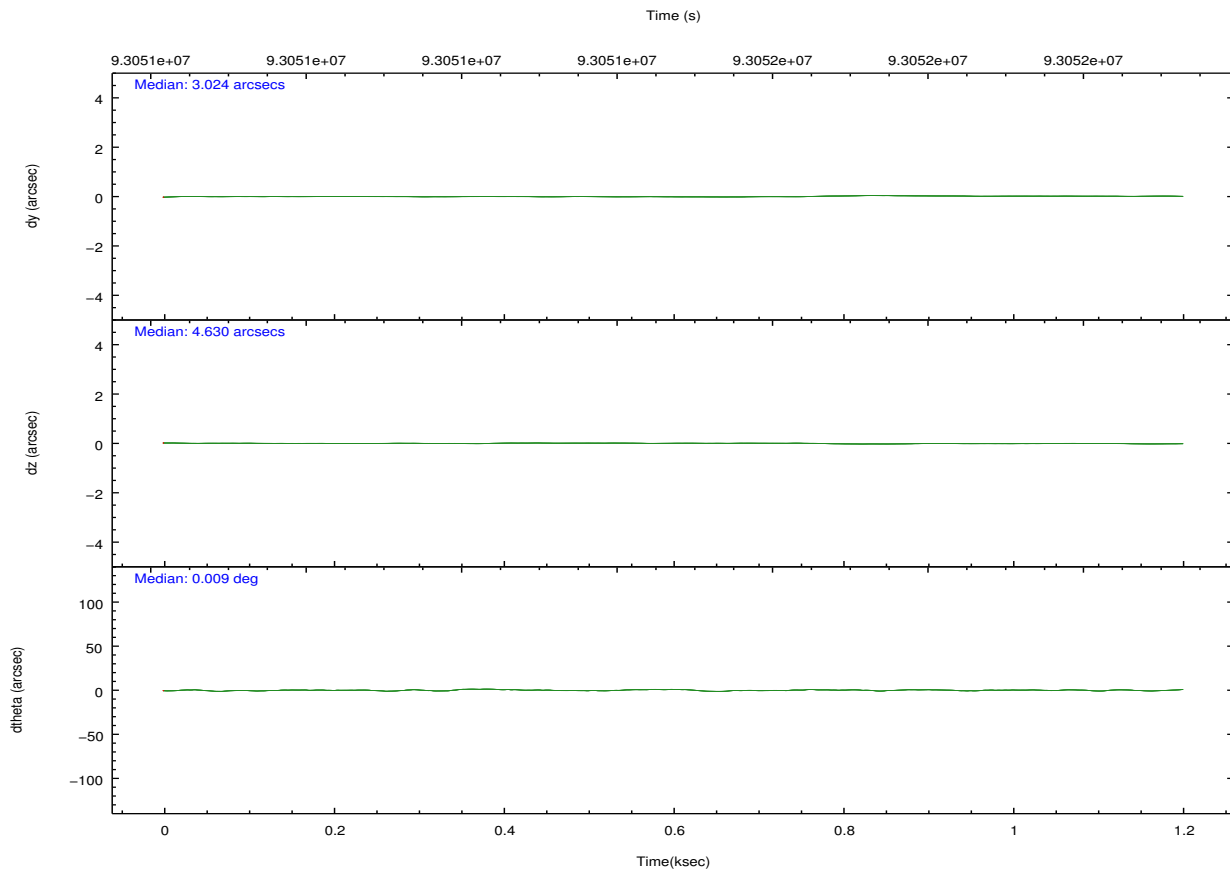
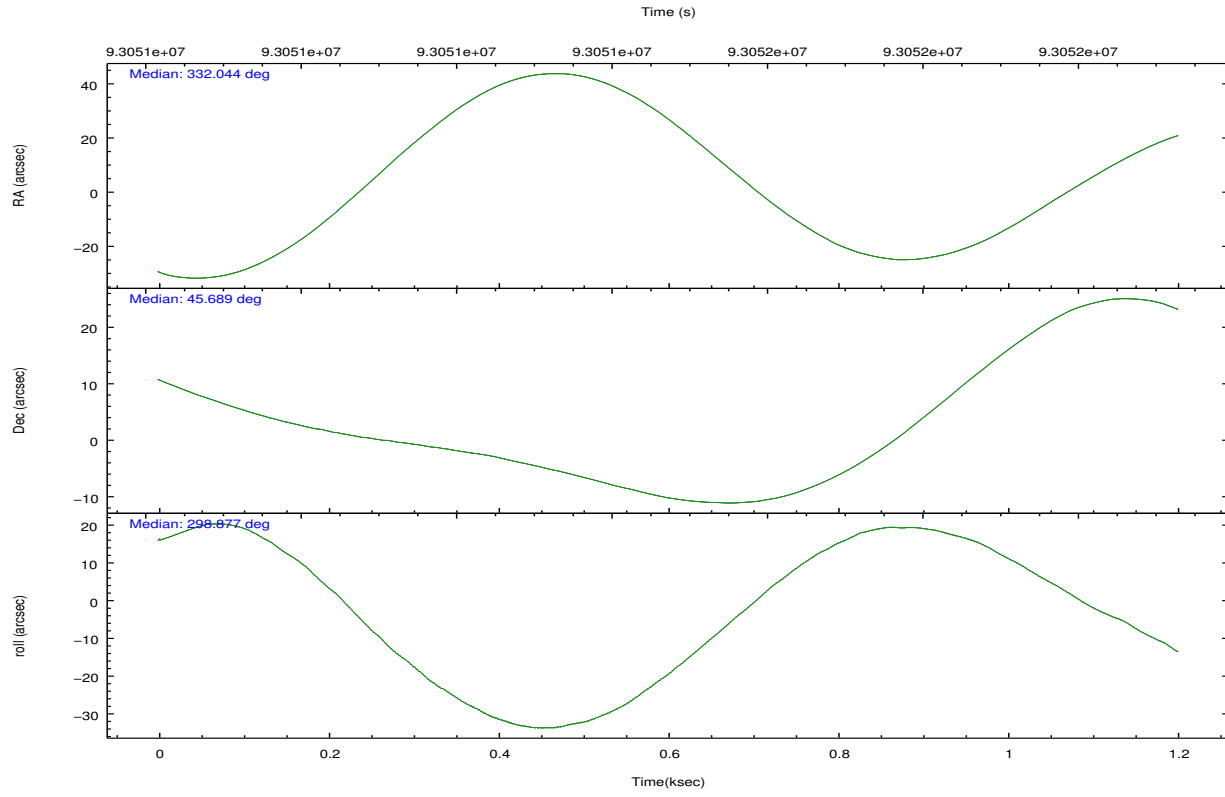
2.2 Compared Parameters

Parameter	Planned	Actual
Instrument	HRC	HRC
Detector	HRC-I	HRC-I
Grating	NONE	NONE
Data mode	OBSERVING	OBSERVING
Observation mode	POINTING	POINTING
[deg] Pointing RA	332.011618	332.0445169232094
[deg] Pointing Dec	45.703235	45.6898167622703
[deg] Pointing Roll	299.006865	298.8878972984547
[mm] SIM focus pos	-1.040293	-1.038866356238299
[mm] SIM defocus	0	0.001426264420575141
[mm] SIM translation stage pos	126.985494	126.9854943052878
[mm] SIM translation stage offset	0	-5.413686238853188e-06
[s] Observation start time (MET)	93051071.184000	93050694.775877
Observation start date	2000-12-12T23:30:07	2000-12-12T23:24:54
[s] Observation end time (MET)	93052071.184000	93052205.113435
Observation end date	2000-12-12T23:46:47	2000-12-12T23:50:05

Parameter	Planned	Actual
Obspar format version number	7	7
Obspar file type	PREDICTED	ACTUAL
Obspar update status	NONE	UPDATED

2.3 Aspect



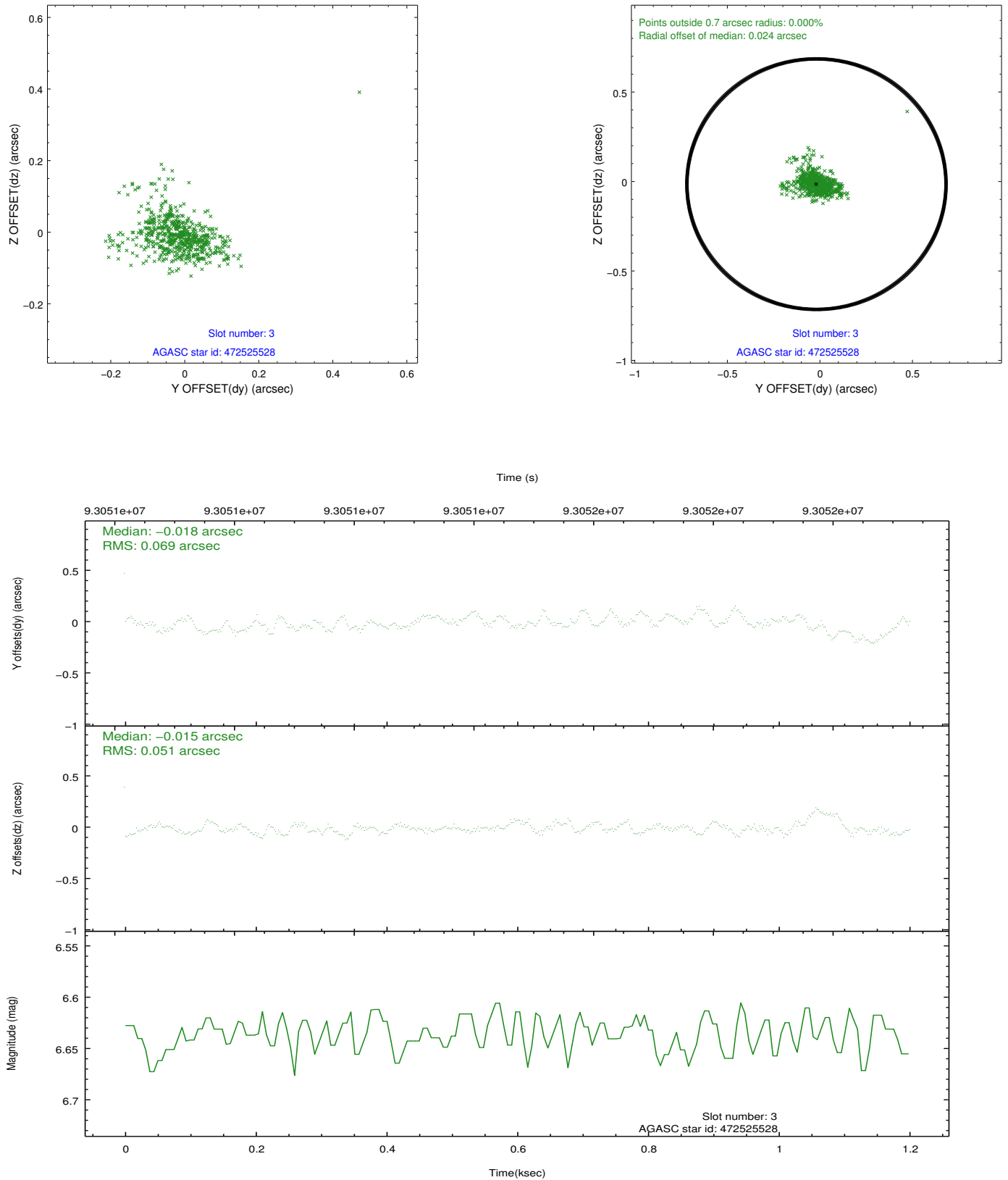


Slot Statistics

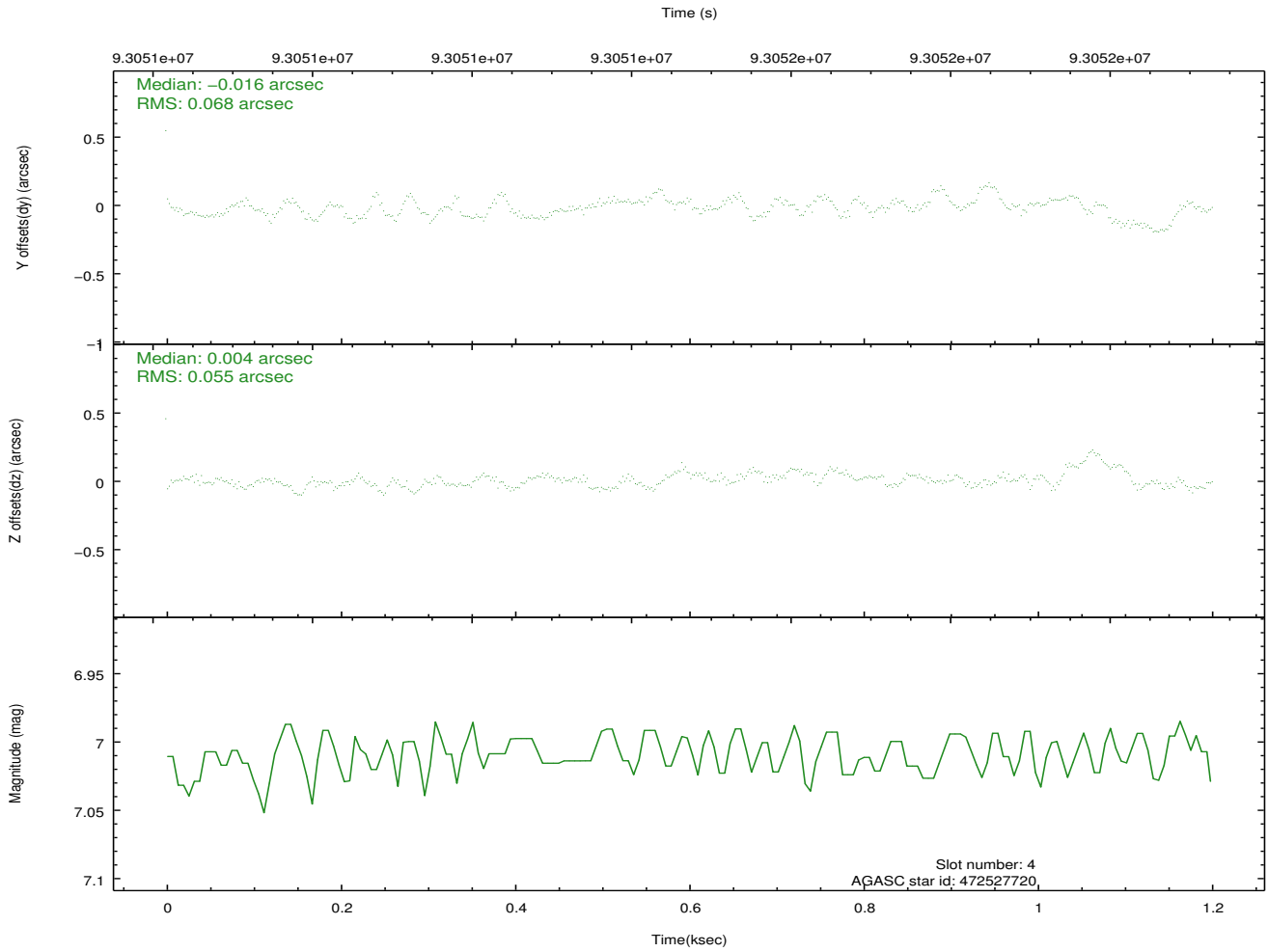
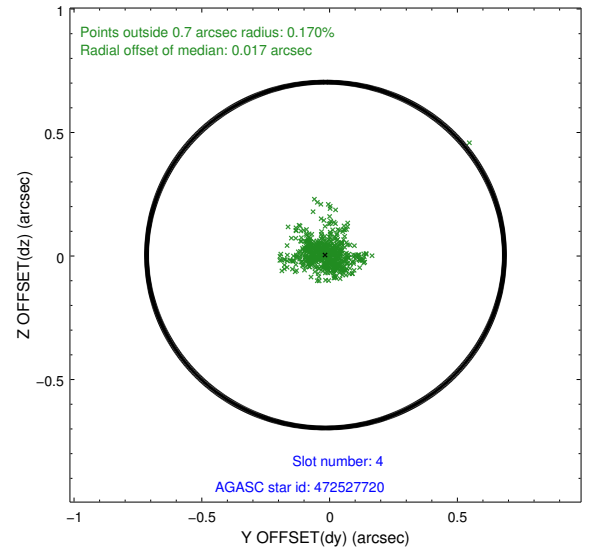
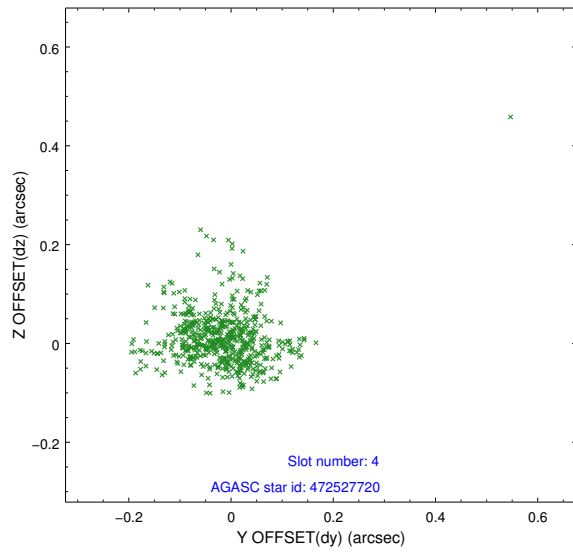
slot	status	id	mag	n_pts	med_dy	med_dz	dr1	dr2	ra	dec	mean_y	mean_z
0	FID	HRC-I-1	6.97	294	0.046	0.066	0.006	0.009	0.000000	0.000000	-758.47	-1292.38
1	FID	HRC-I-3	7.05	294	0.037	-0.100	0.006	0.010	0.000000	0.000000	-1189.53	1007.62
2	FID	HRC-I-4	6.98	294	0.031	-0.056	0.005	0.008	0.000000	0.000000	1280.28	1013.07
3	GUIDE	472525528	6.64	587	-0.018	-0.015	0.081	0.163	331.551102	45.248694	864.46	-1811.99
4	GUIDE	472527720	7.01	587	-0.016	0.004	0.081	0.154	331.460205	45.112509	1180.19	-2256.46
5	GUIDE	472523760	8.23	587	-0.036	-0.132	0.064	0.202	331.645363	45.403260	497.85	-1335.64
6	GUIDE	472659832	9.47	583	-0.080	-0.037	0.117	0.770	332.780399	46.098139	-318.58	2370.42
7	GUIDE	472646552	9.63	586	0.111	0.184	0.128	0.235	333.120915	45.571877	1753.27	2230.00

2.4 Star Slots

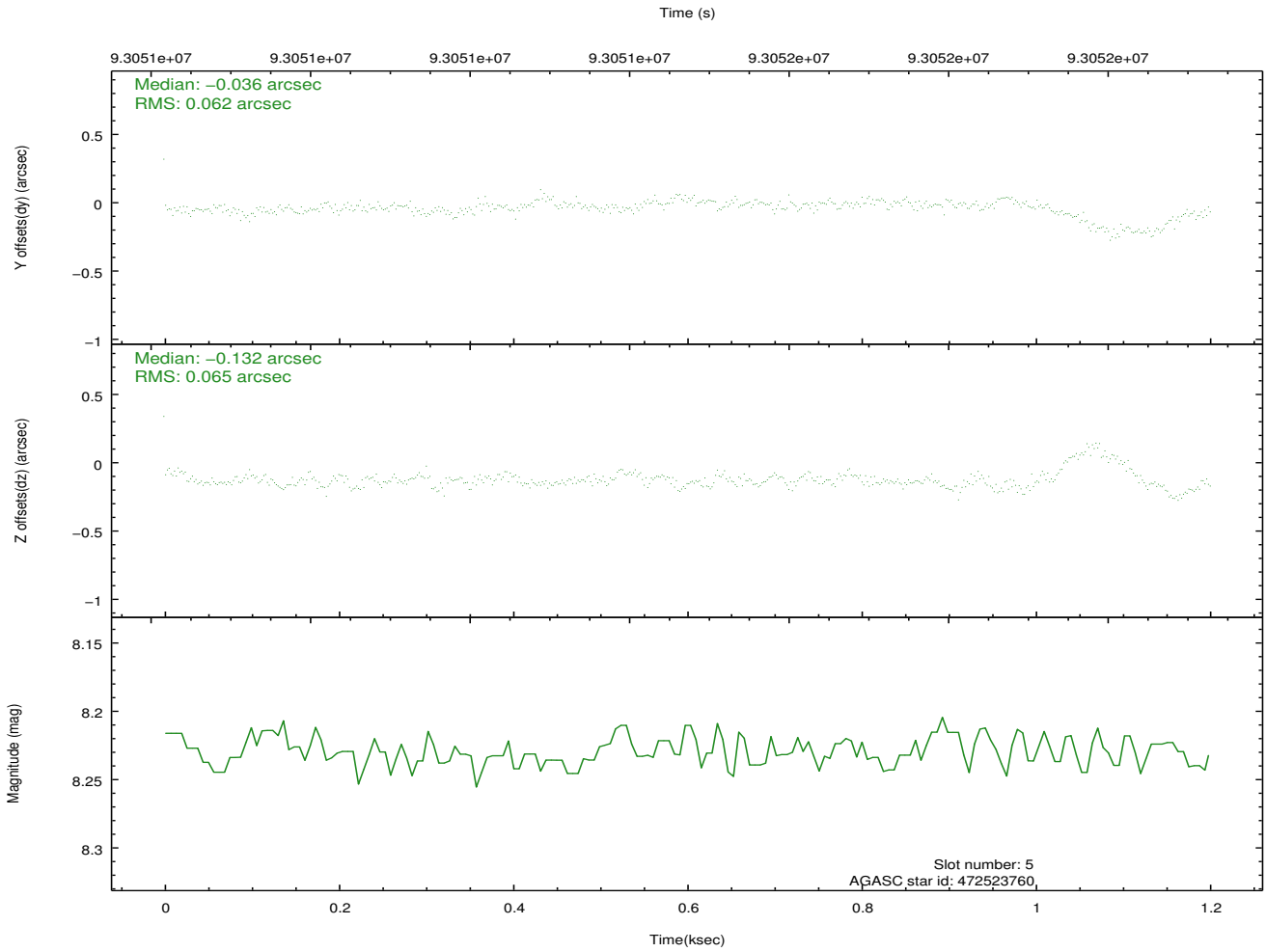
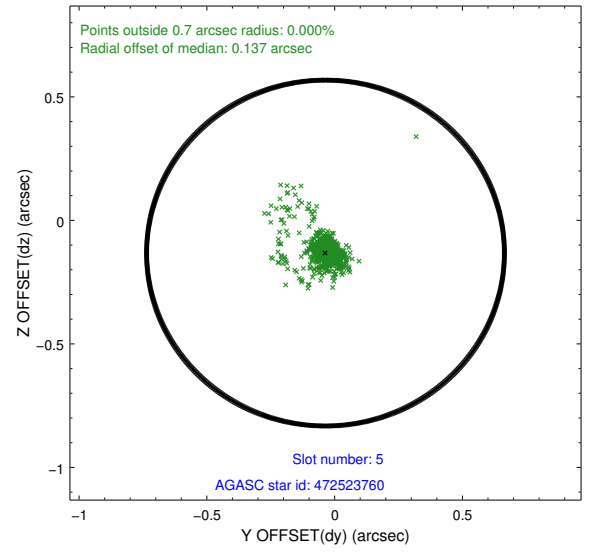
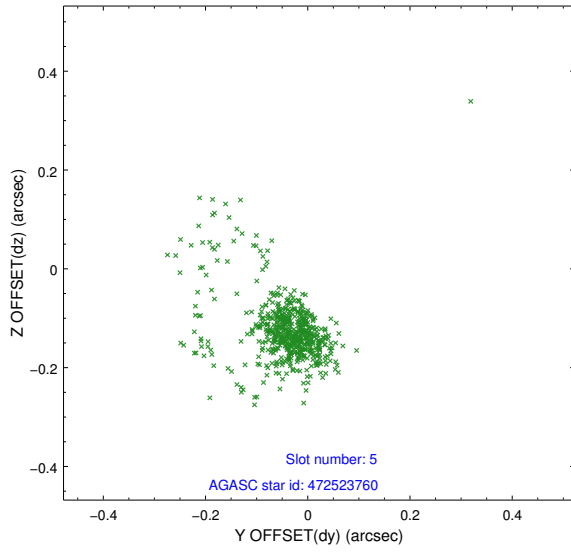
2.4.1 Slot 3



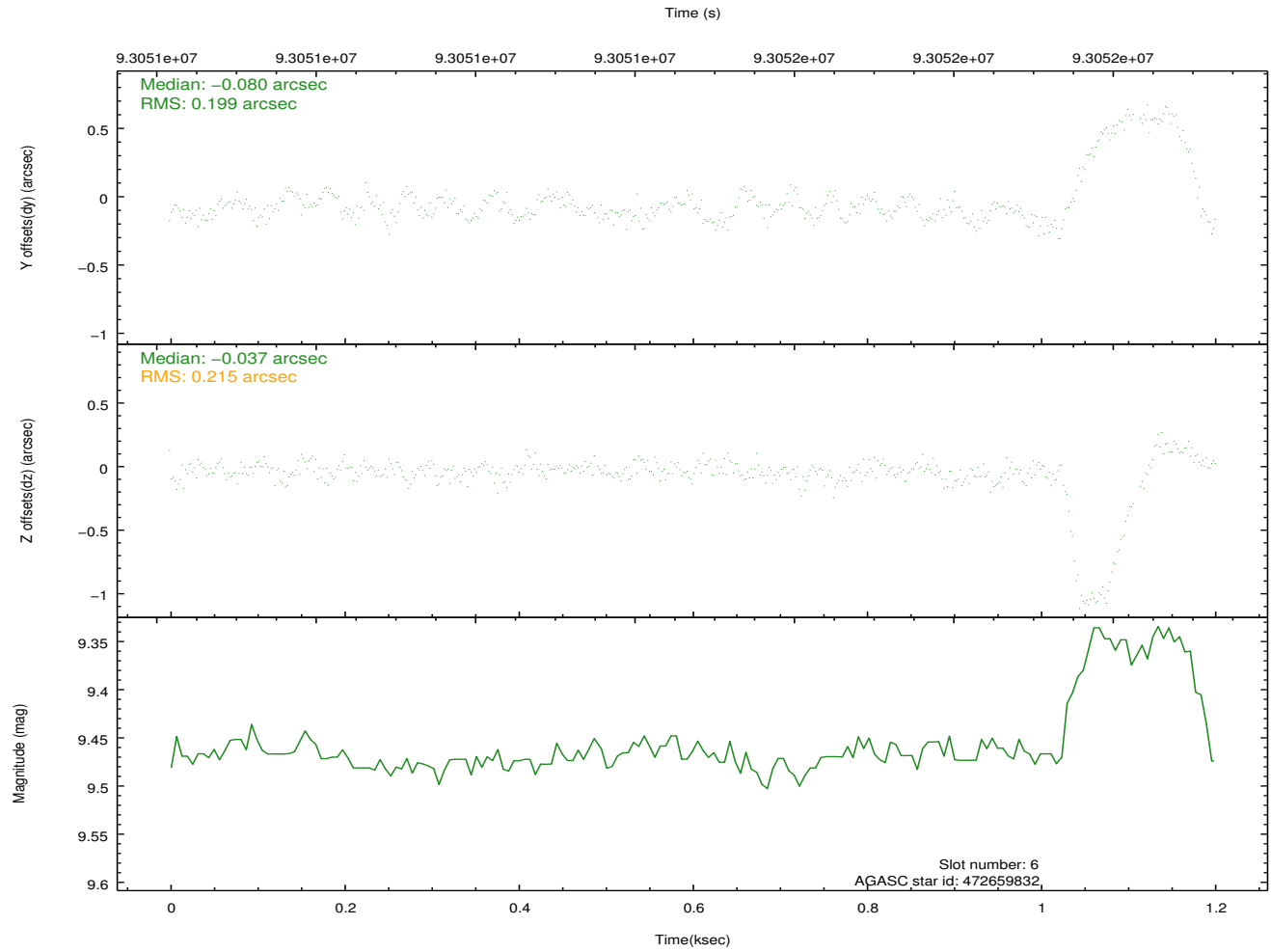
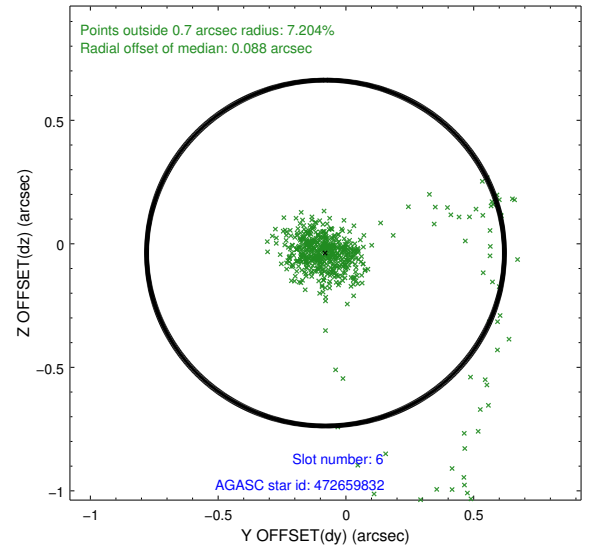
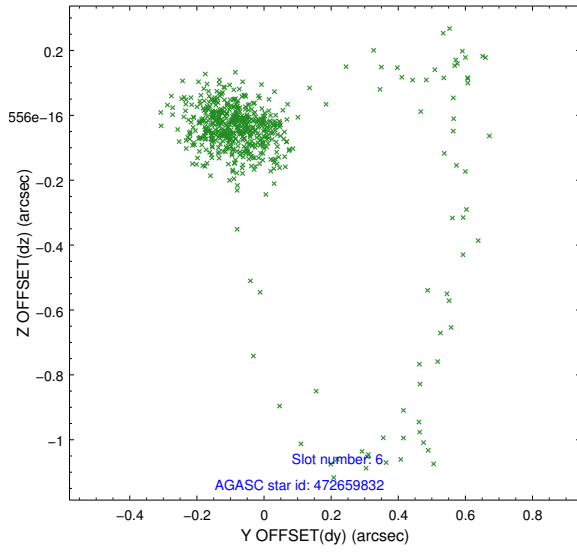
2.4.2 Slot 4



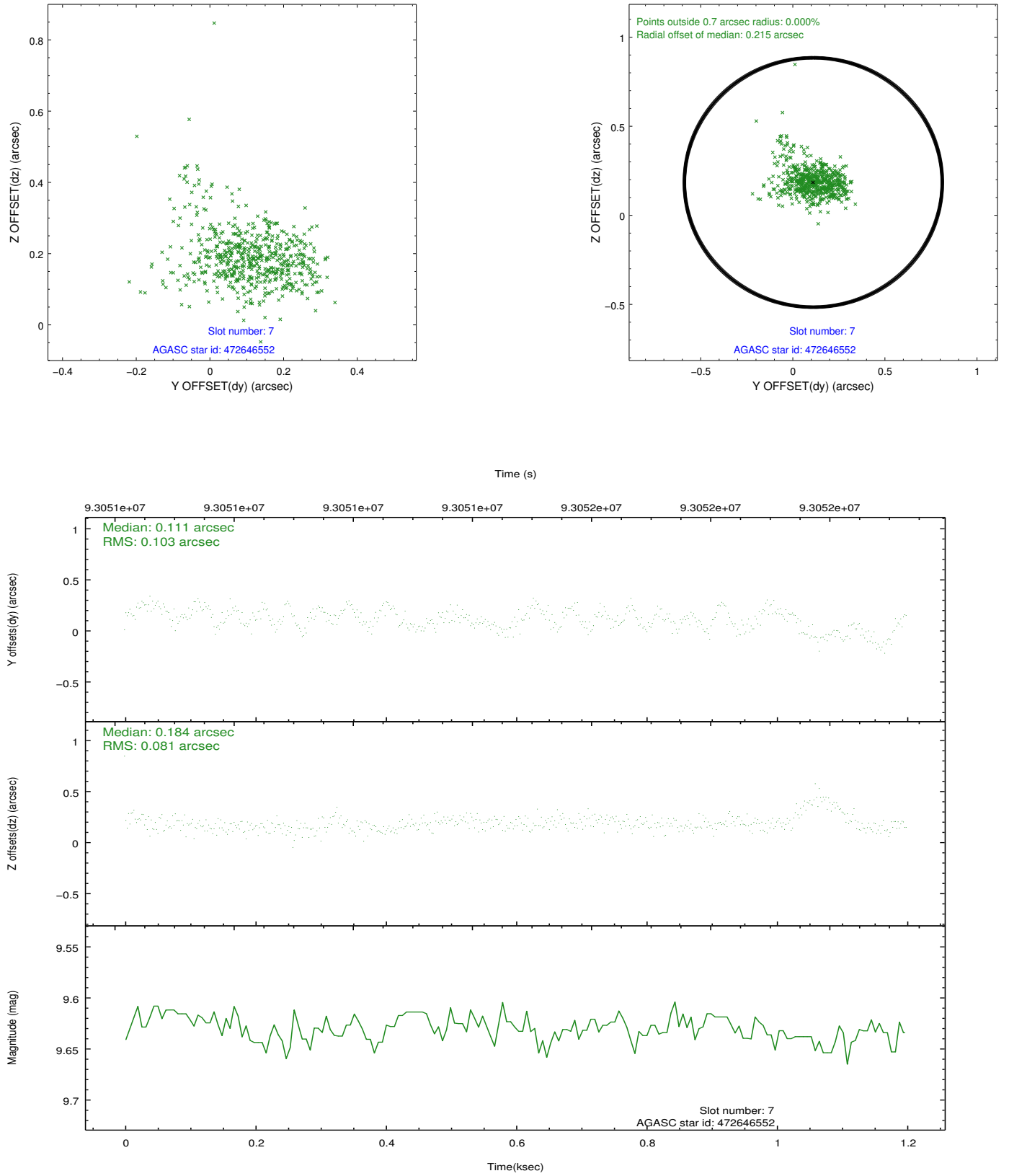
2.4.3 Slot 5



2.4.4 Slot 6

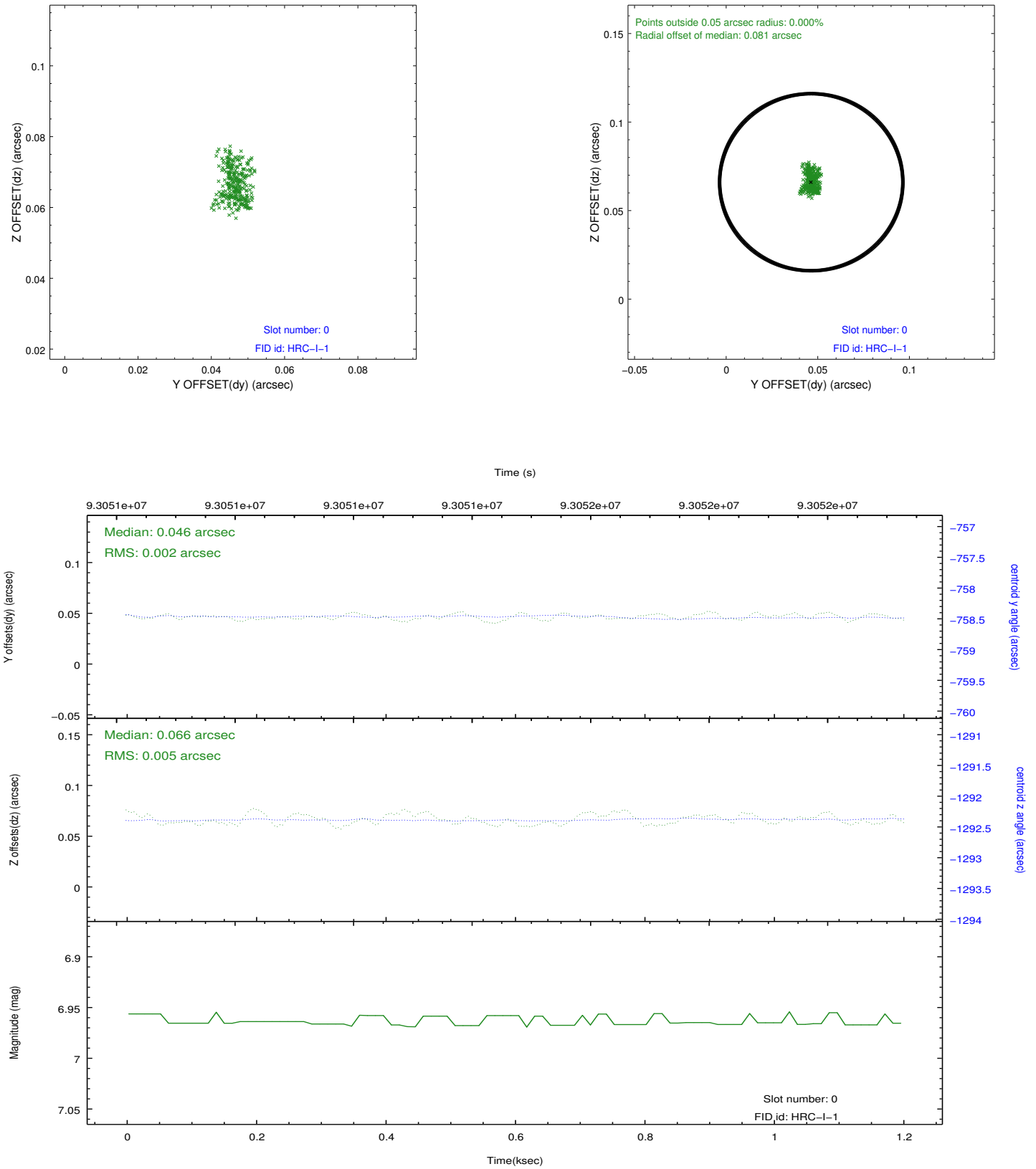


2.4.5 Slot 7

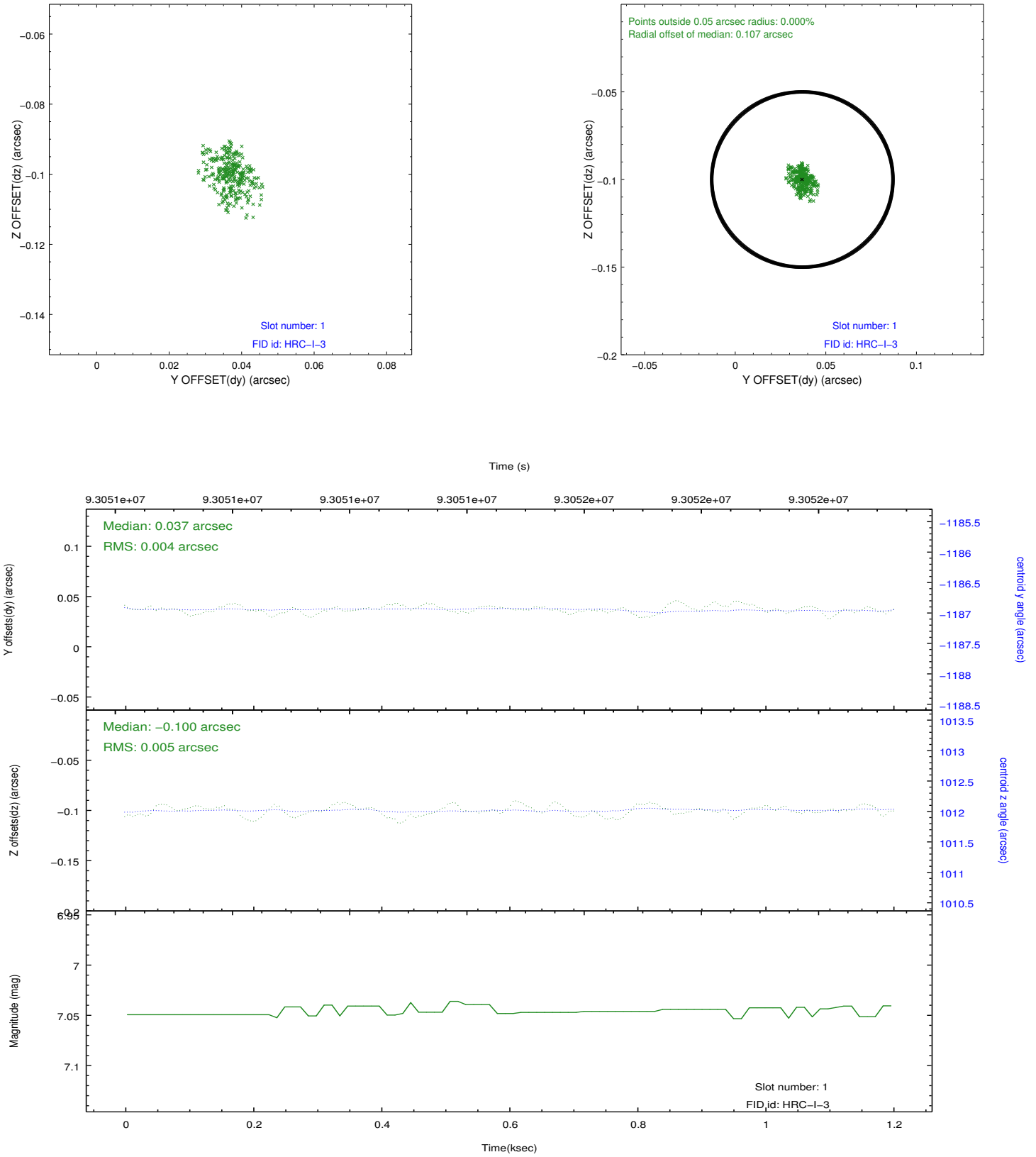


2.5 FID Slots

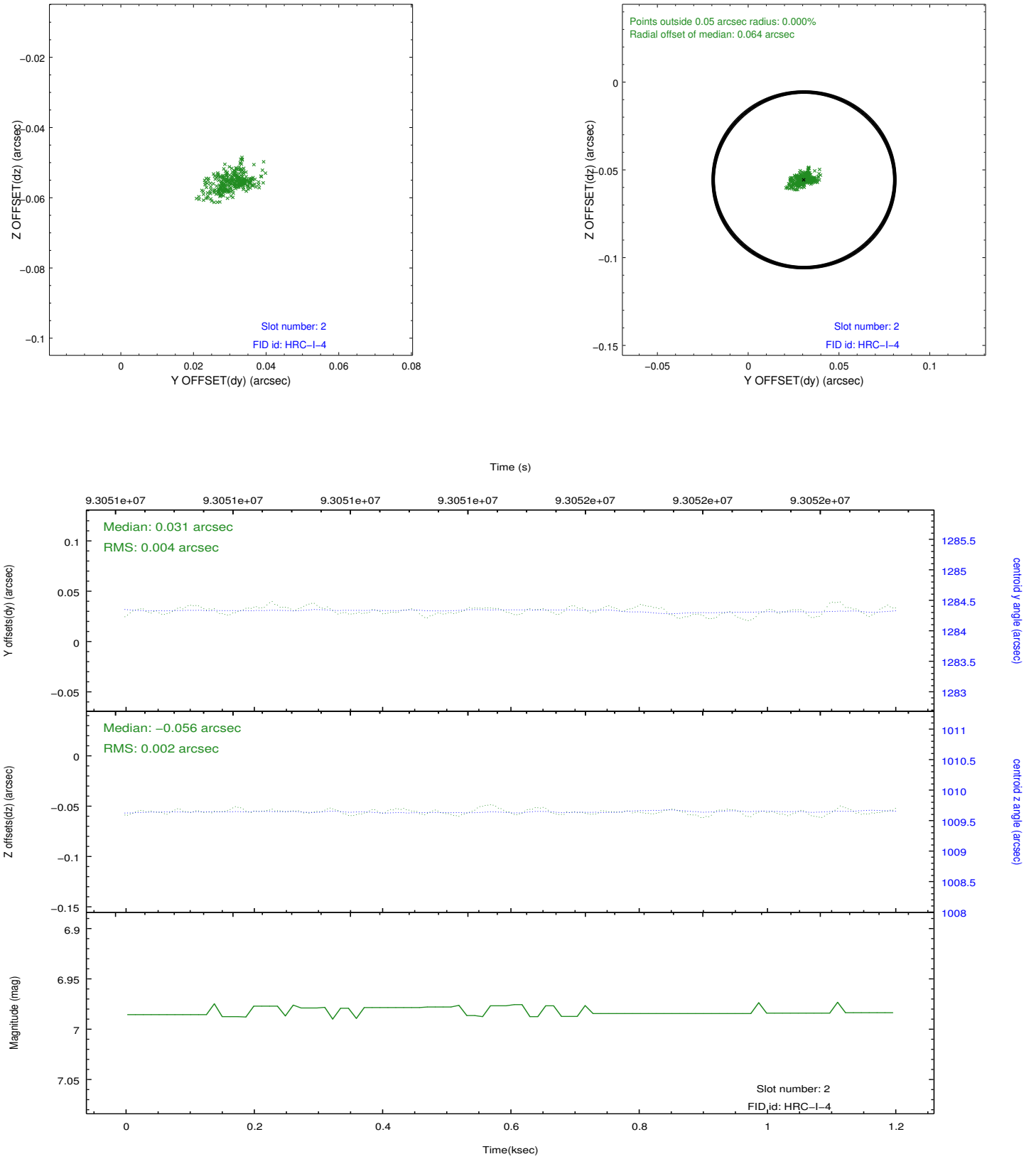
2.5.1 Slot 0



2.5.2 Slot 1



2.5.3 Slot 2



A Summary

A.1 Status

V&V Scientist	Jen Lauer
V&V Date (YYYY-MM-DD)	2012.09.11
V&V Edition	1
V&V Disposition and Status	OK
V&V Charge Time	1.2

A.2 Comments