

V&V Reference Report

L2 ASCDS Version : 7.6.9

Observation 1000 - L2 Version 5
Chandra X-Ray Center

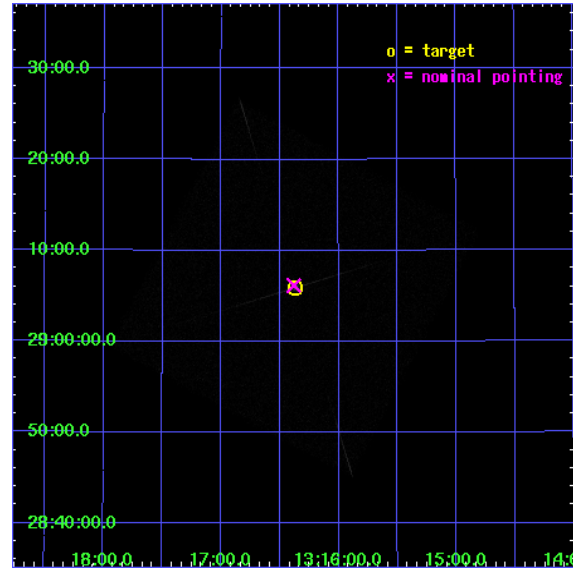
L2 Processing Date : Nov 21 2007

Contents

1	Front	2
2	OBI	3
2.1	OBI	3
2.1.1	Images	3
2.1.2	Parameters	4
2.1.3	Events	4
2.2	Compared Parameters	5
2.3	Aspect	6
2.4	Star Slots	9
2.4.1	Slot 3	9
2.4.2	Slot 4	10
2.4.3	Slot 5	11
2.4.4	Slot 6	12
2.4.5	Slot 7	13
2.5	FID Slots	14
2.5.1	Slot 0	14
2.5.2	Slot 1	15
2.5.3	Slot 2	16
3	Gratings	17
3.1	LETG Arm	17
A	Summary	19
A.1	Status	19
A.2	Comments	19

1 Front

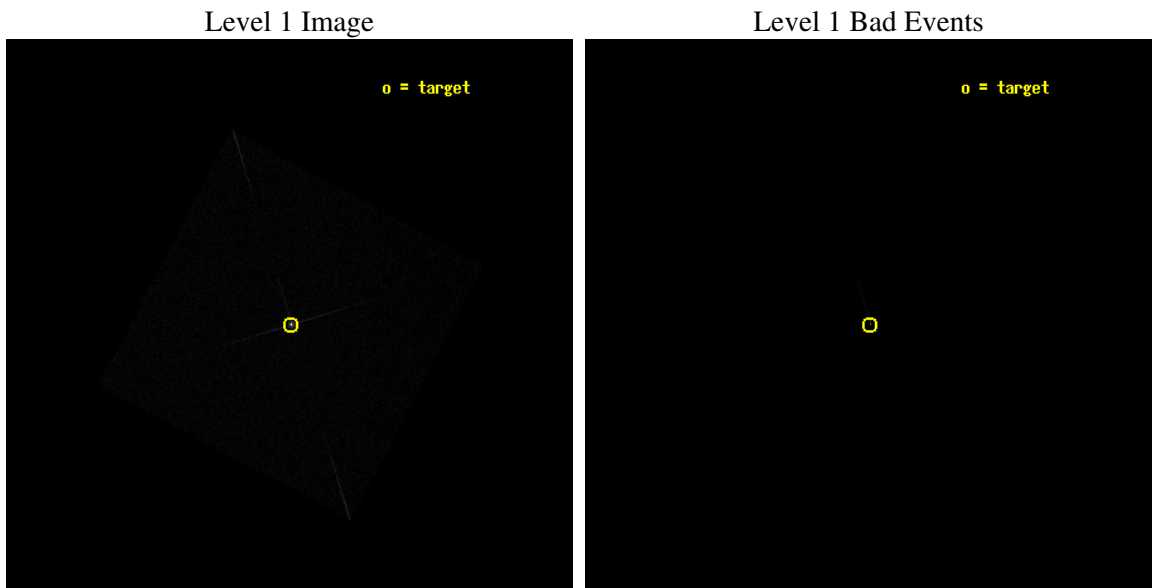
seq_num	290081
obs_id	1000
title	LETG/HRC-I CALIBRATION OBSERVATIONS OF HZ43
observer	Dr. CXC Calibration
object	HZ43
ra_targ	199.092083
dec_targ	29.099
ra_nom	199.09525416048
dec_nom	29.102616179033
roll_nom	72.888925578174
revision	5
ontime	3894.2313994765
livetime	3875.0452371271
l2events	107765



2 OBI

2.1 OBI

2.1.1 Images



2.1.2 Parameters

obi_num	0
ascdsver	7.6.11.2
caldbver	3.4.1
date	2007-11-21T07:48:49
revision	5

sched_exp_time	4000.000000
ontime	3894.2313994765
l1events	202585

2.1.3 Events

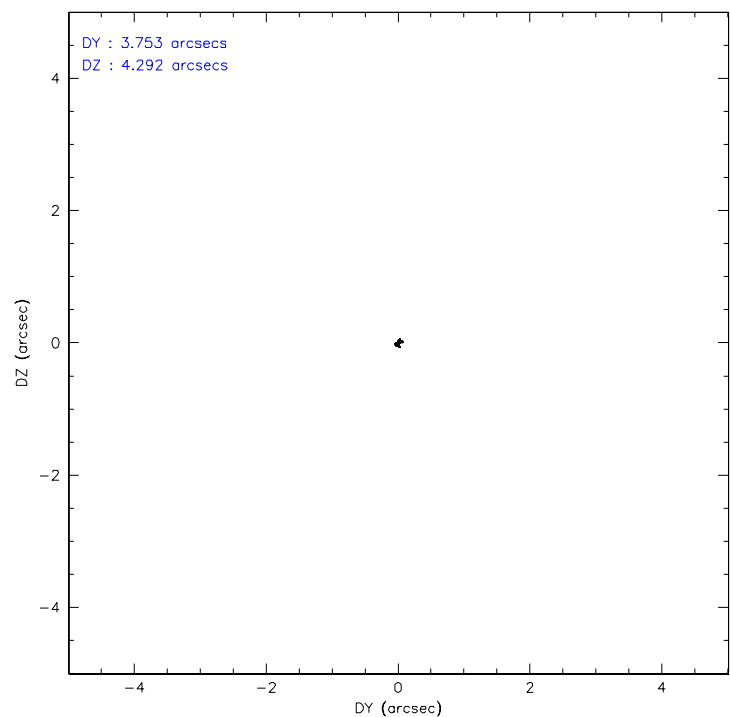
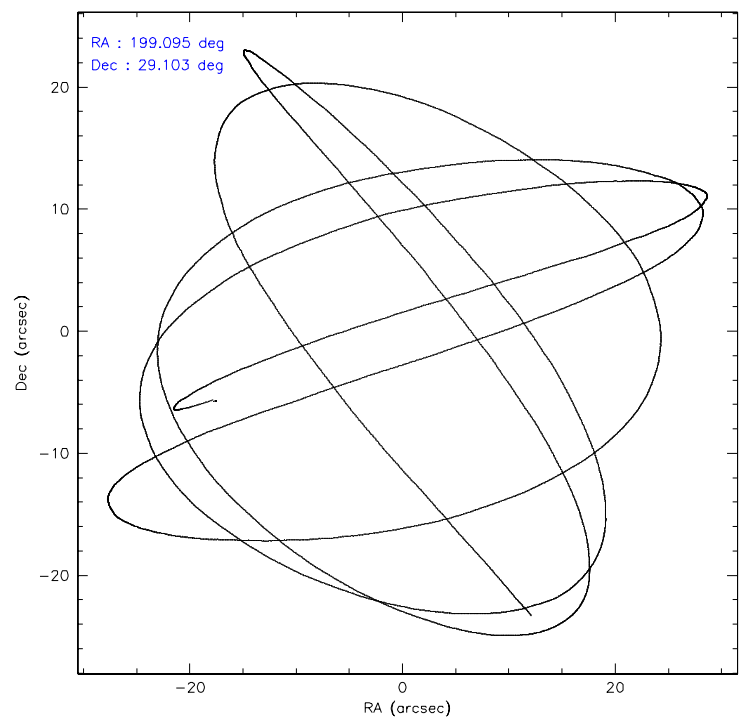
Level 1 Events

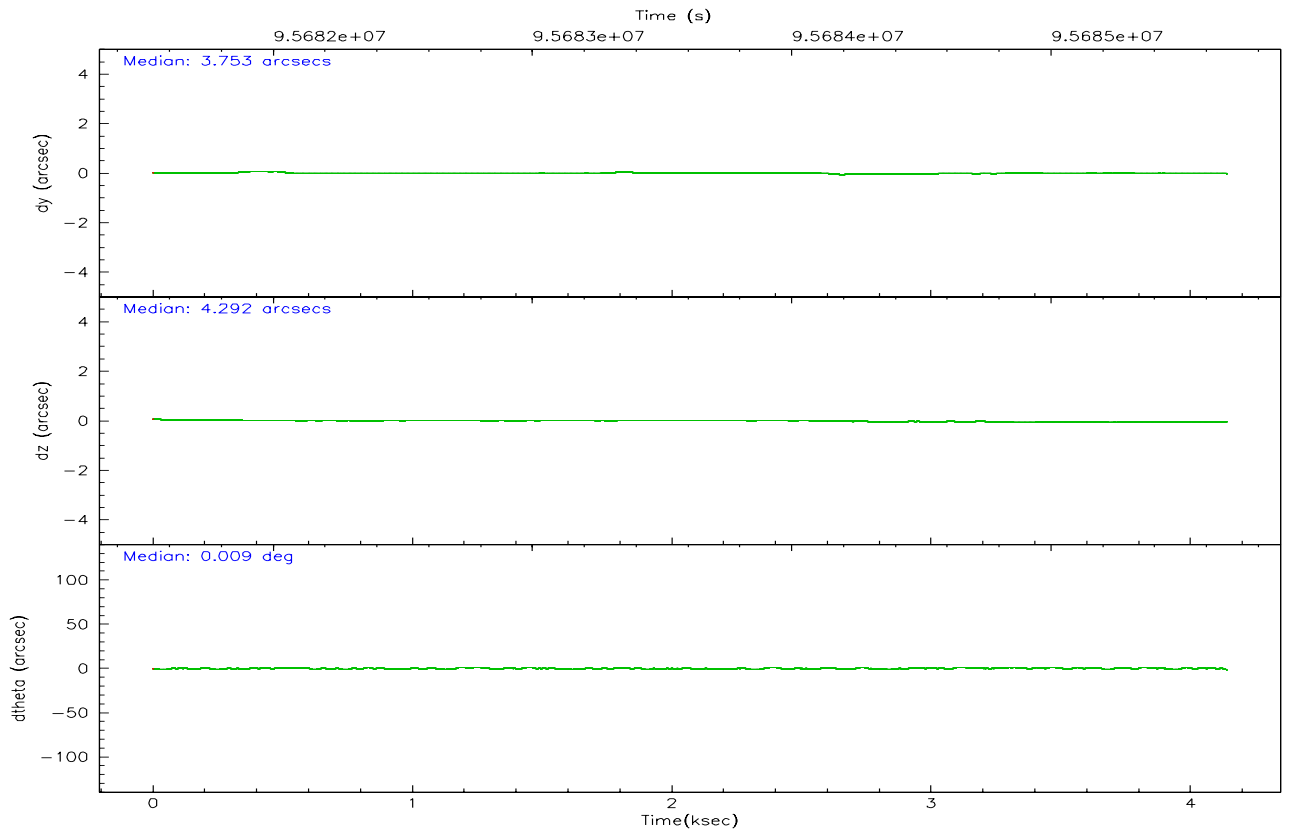
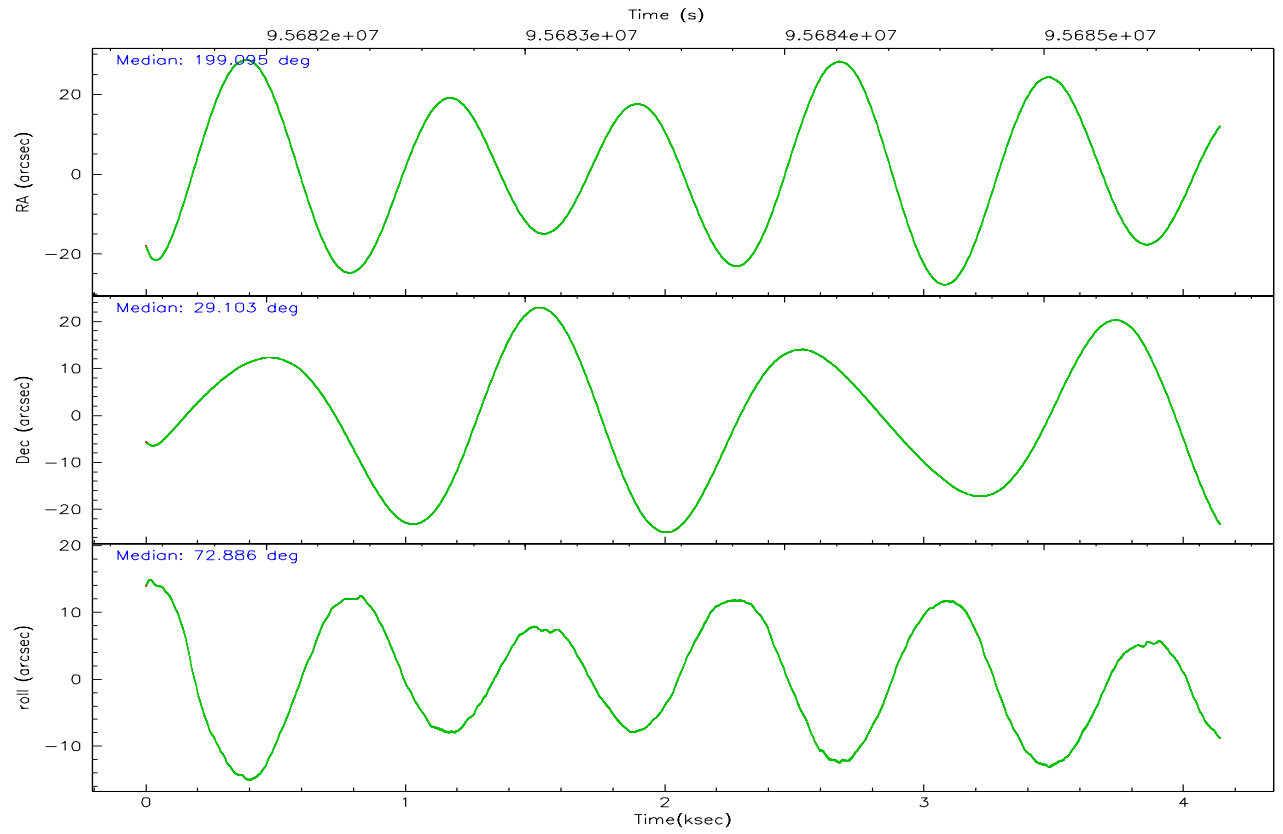
	segment 0
level 1 events	202585
rejected events	50137
rejected %	24%

2.2 Compared Parameters

Parameter	Planned	Actual	Parameter	Planned	Actual
Instrument	HRC	HRC	Obspar format version number	6	6
Detector	HRC-I	HRC-I	Obspar file type	PREDICTED	ACTUAL
Grating	LETG	LETG	Obspar update status	NONE	UPDATED
Data mode	OBSERVING	OBSERVING			
Observation mode	POINTING	POINTING			
Pointing RA	199.102747	199.0952541604755			
Pointing Dec	29.075932	29.10261617903259			
Pointing Roll	72.980758	72.88892557817363			
Window start time	94694464.184000	94694464.184000			
Window stop time	97200064.184000	97200064.184000			
SIM focus pos (mm)	-1.040293	-1.038866356238299			
SIM defocus (mm)	0	0.001426264420575141			
SIM translation stage pos (mm)	126.985494	126.9854943052878			
SIM translation stage offset (mm)	0	-5.413686238853188e-06			
Observation start time	95681677.184000	95680392.33907799			
Observation start date	2001-01-12T10:13:33	2001-01-12T09:53:12			
Observation end time	95685677.184000	95685811.514286			
Observation end date	2001-01-12T11:20:13	2001-01-12T11:23:31			

2.3 Aspect



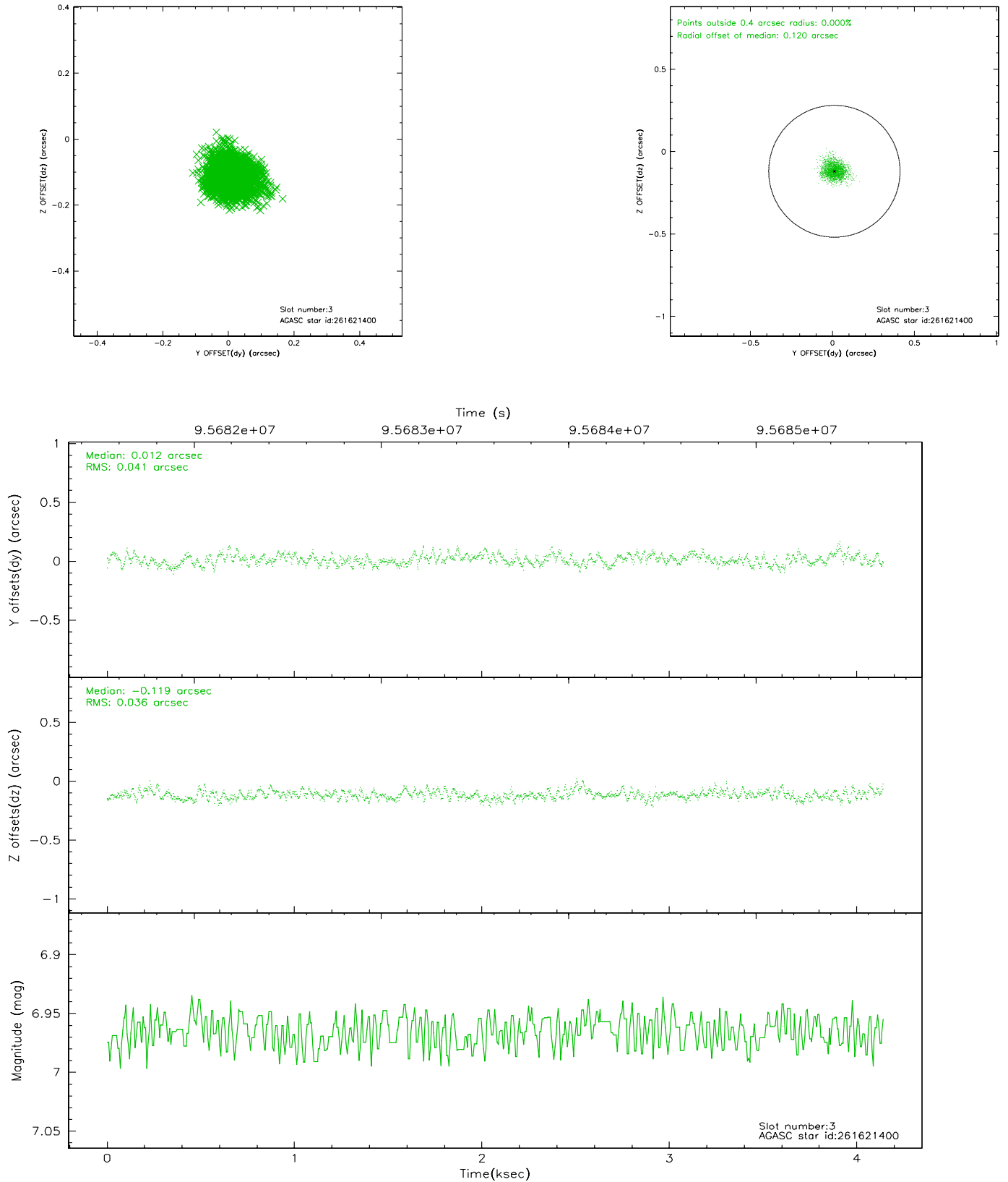


Slot Statistics

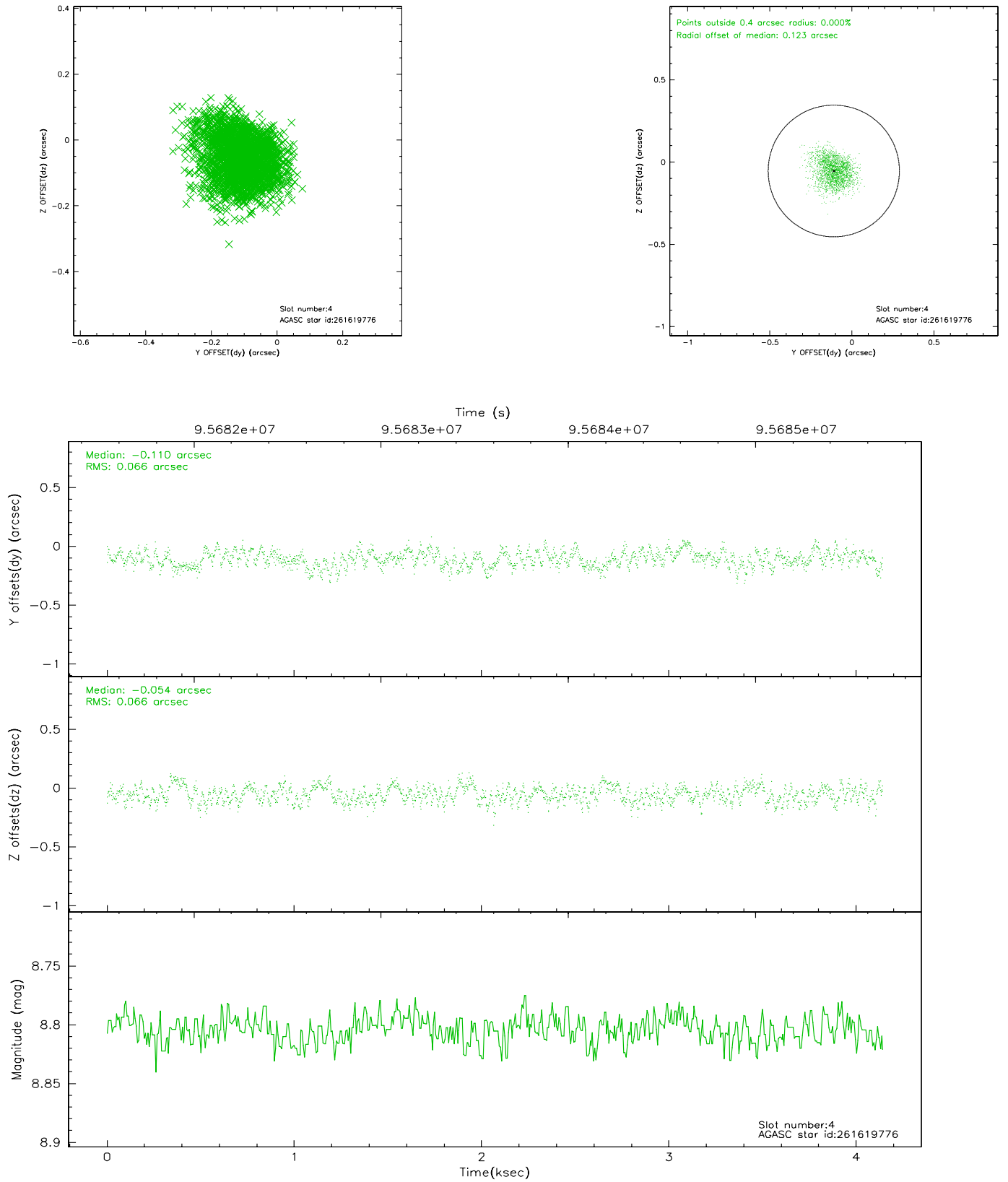
slot	status	id	mag	n_pts	med_dy	med_dz	dr1	dr2	ra	dec	mean_y	mean_z
0	FID	HRC-I-1	6.98	1011	0.060	0.059	0.006	0.010	0.000000	0.000000	-759.20	-1292.04
1	FID	HRC-I-3	7.07	1011	0.003	-0.081	0.007	0.011	0.000000	0.000000	-1188.48	1011.11
2	FID	HRC-I-4	7.01	1011	0.051	-0.068	0.005	0.008	0.000000	0.000000	1282.42	1010.98
3	GUIDE	261621400	6.96	2021	0.012	-0.119	0.058	0.092	198.901600	28.741982	-1336.17	255.42
4	GUIDE	261619776	8.80	2020	-0.110	-0.054	0.100	0.161	198.654383	29.401174	708.44	1688.34
5	GUIDE	261619992	9.32	2018	0.209	-0.125	0.102	0.164	198.395553	28.647634	-2122.74	1687.90
6	GUIDE	261623040	9.13	2021	-0.194	-0.054	0.080	0.124	198.792686	29.757643	2061.72	1646.41
7	GUIDE	261623624	9.12	2019	0.078	0.350	0.097	0.149	199.611555	28.454113	-1665.99	-2192.94

2.4 Star Slots

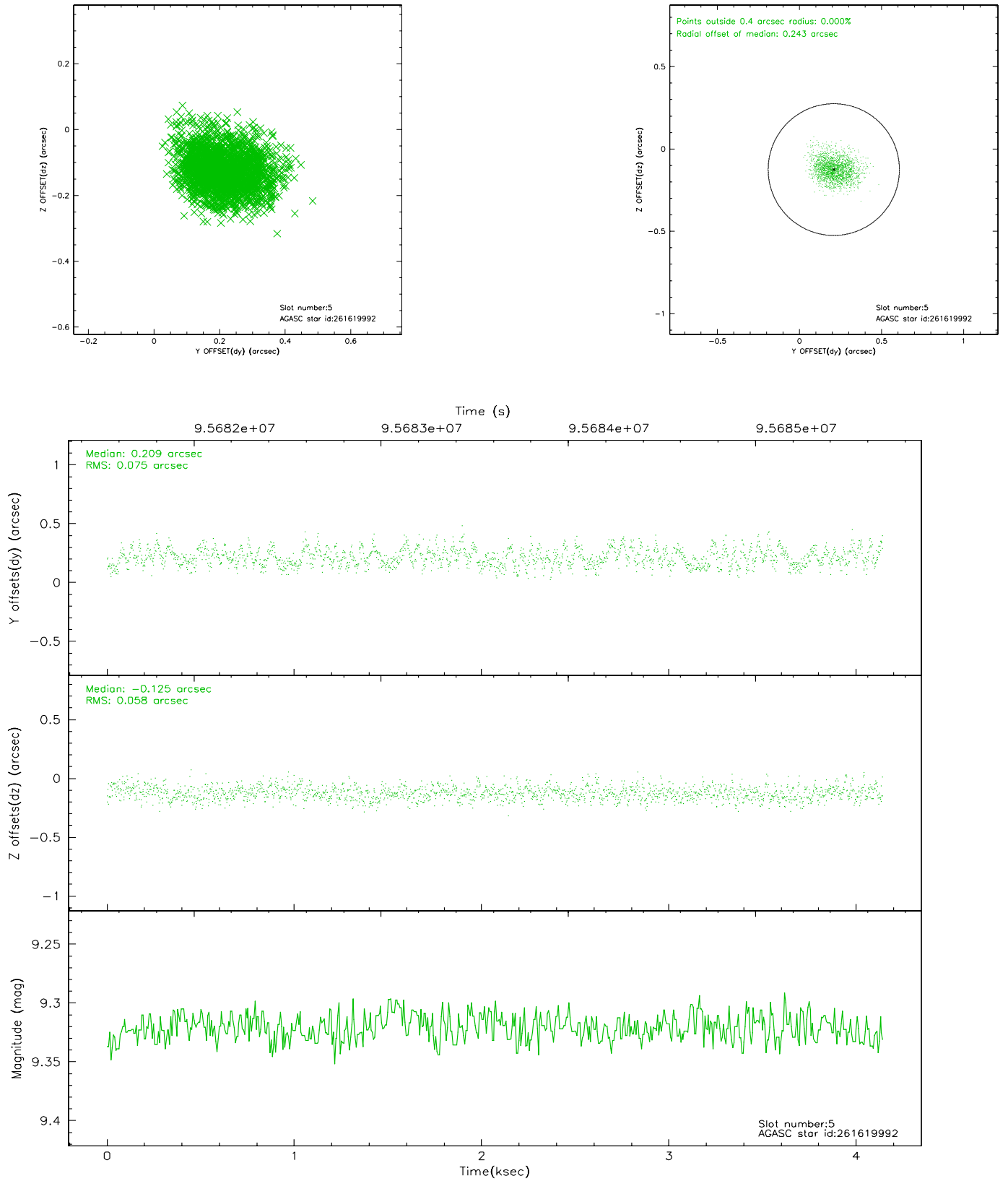
2.4.1 Slot 3



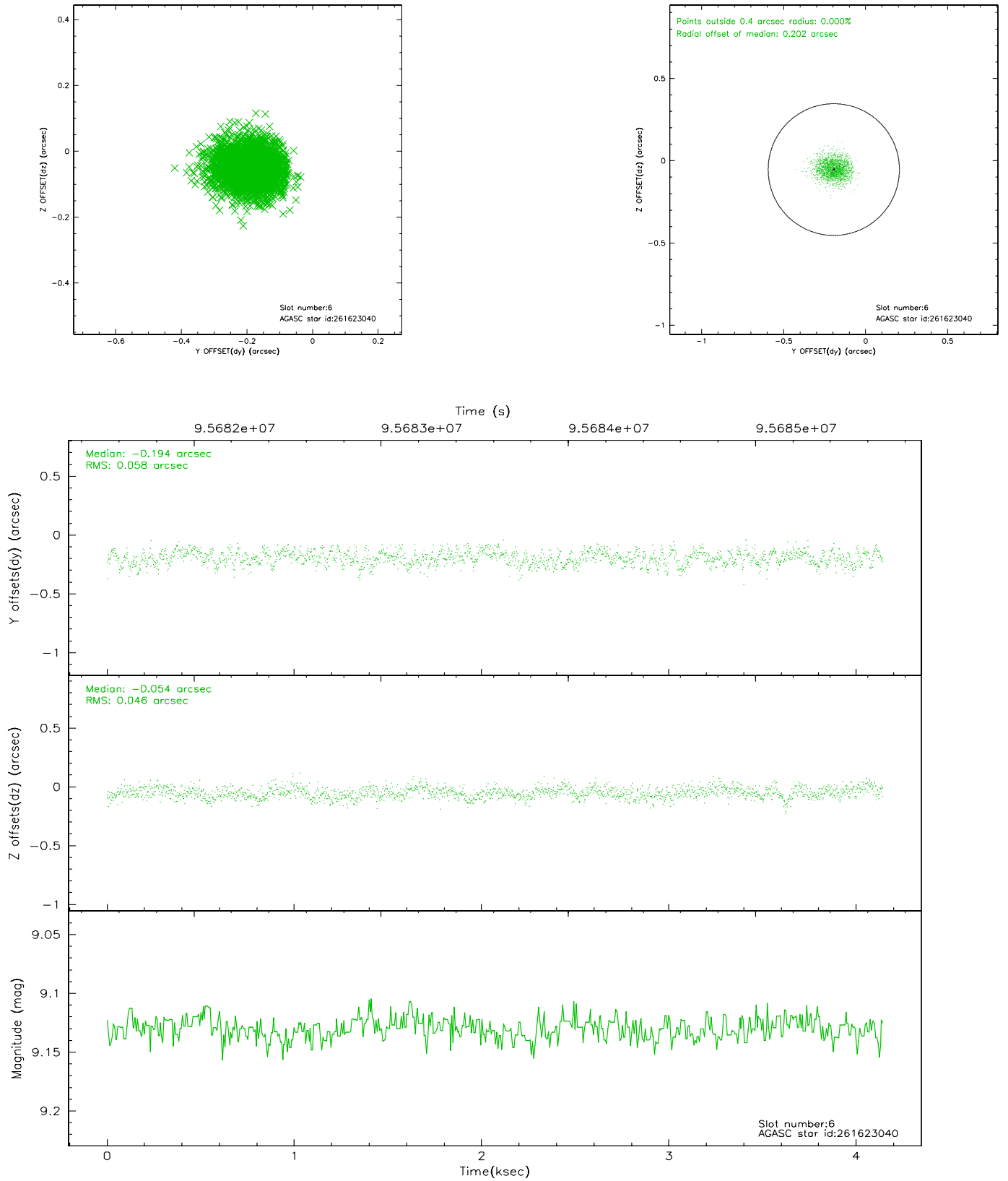
2.4.2 Slot 4



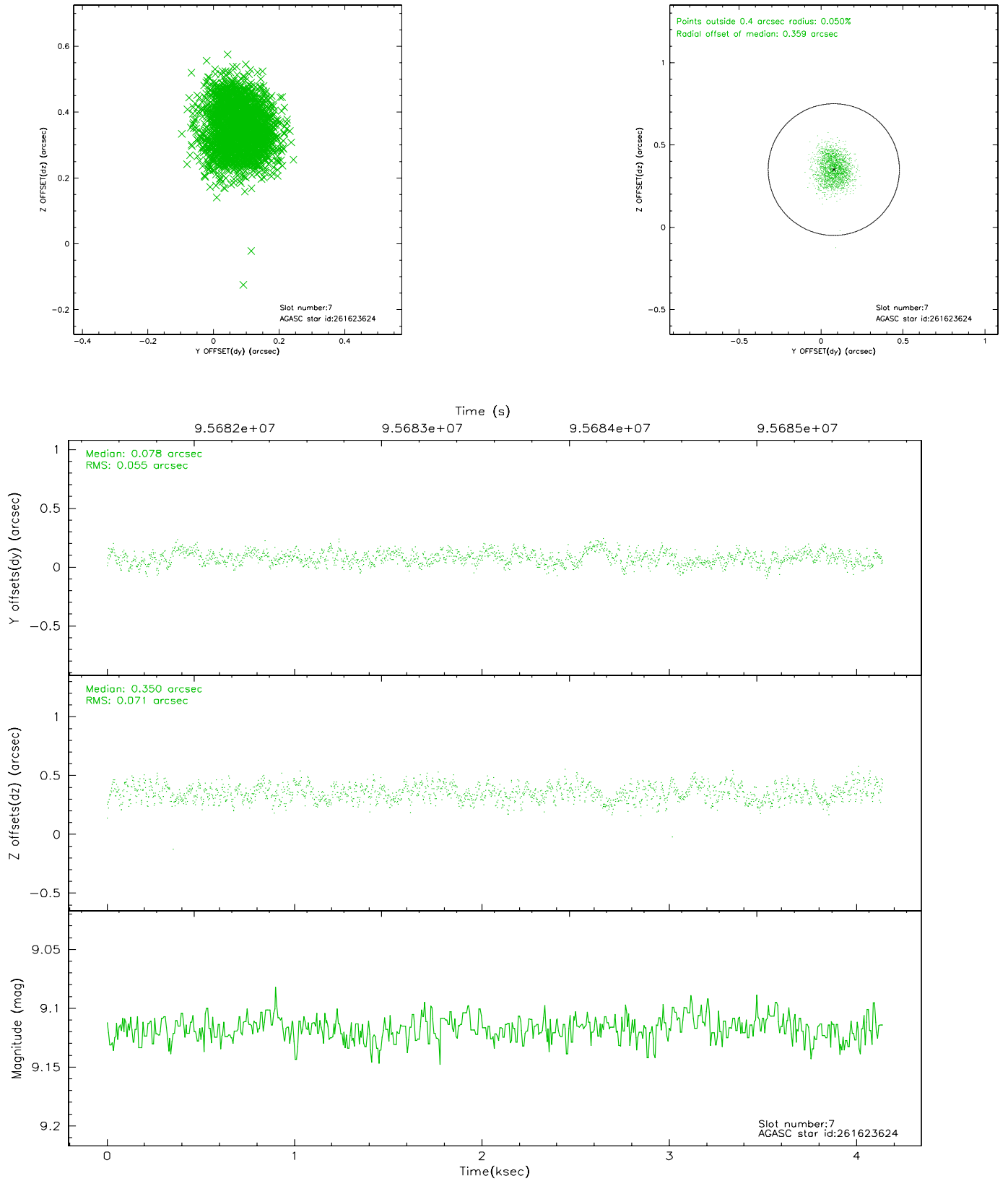
2.4.3 Slot 5



2.4.4 Slot 6

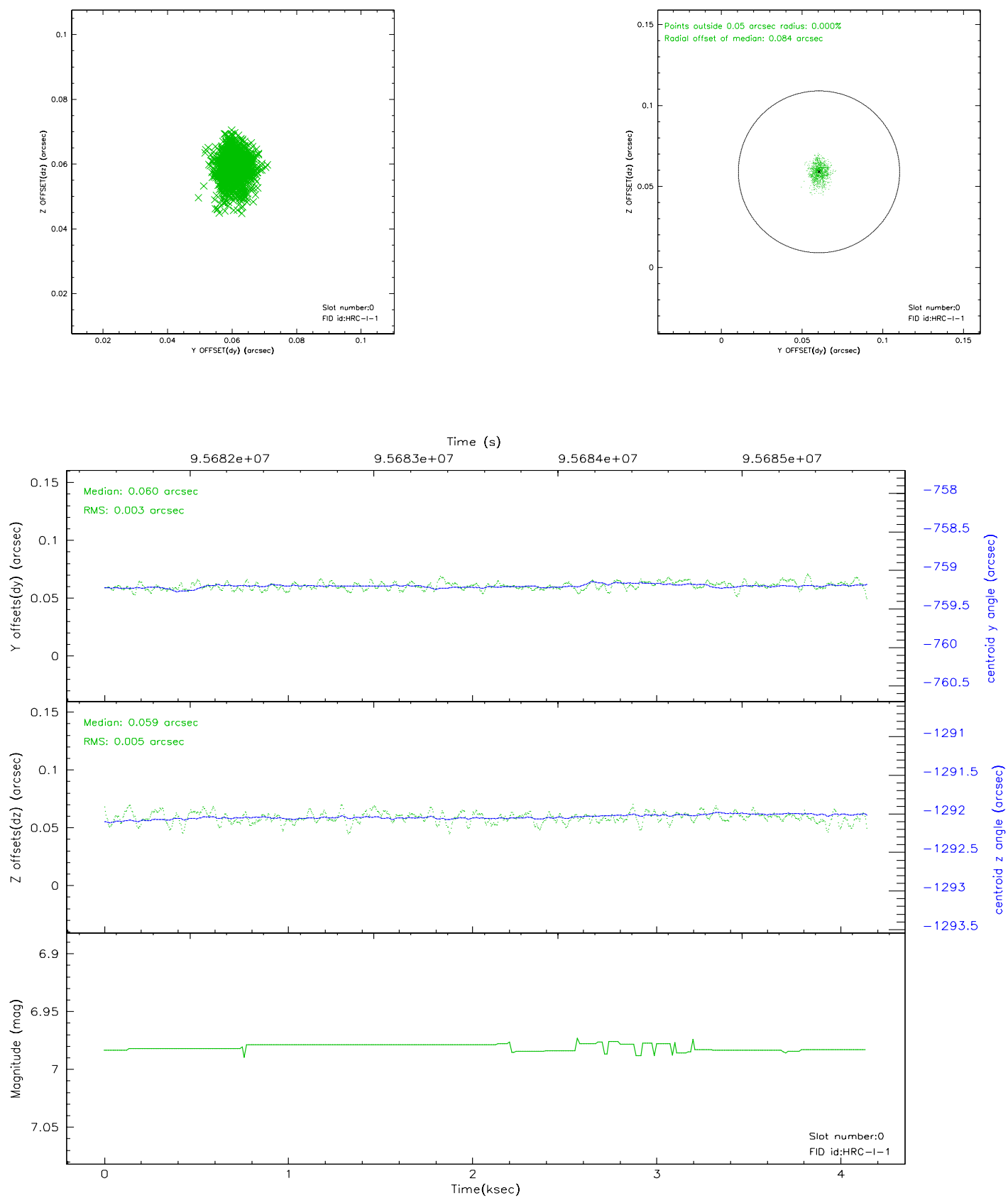


2.4.5 Slot 7

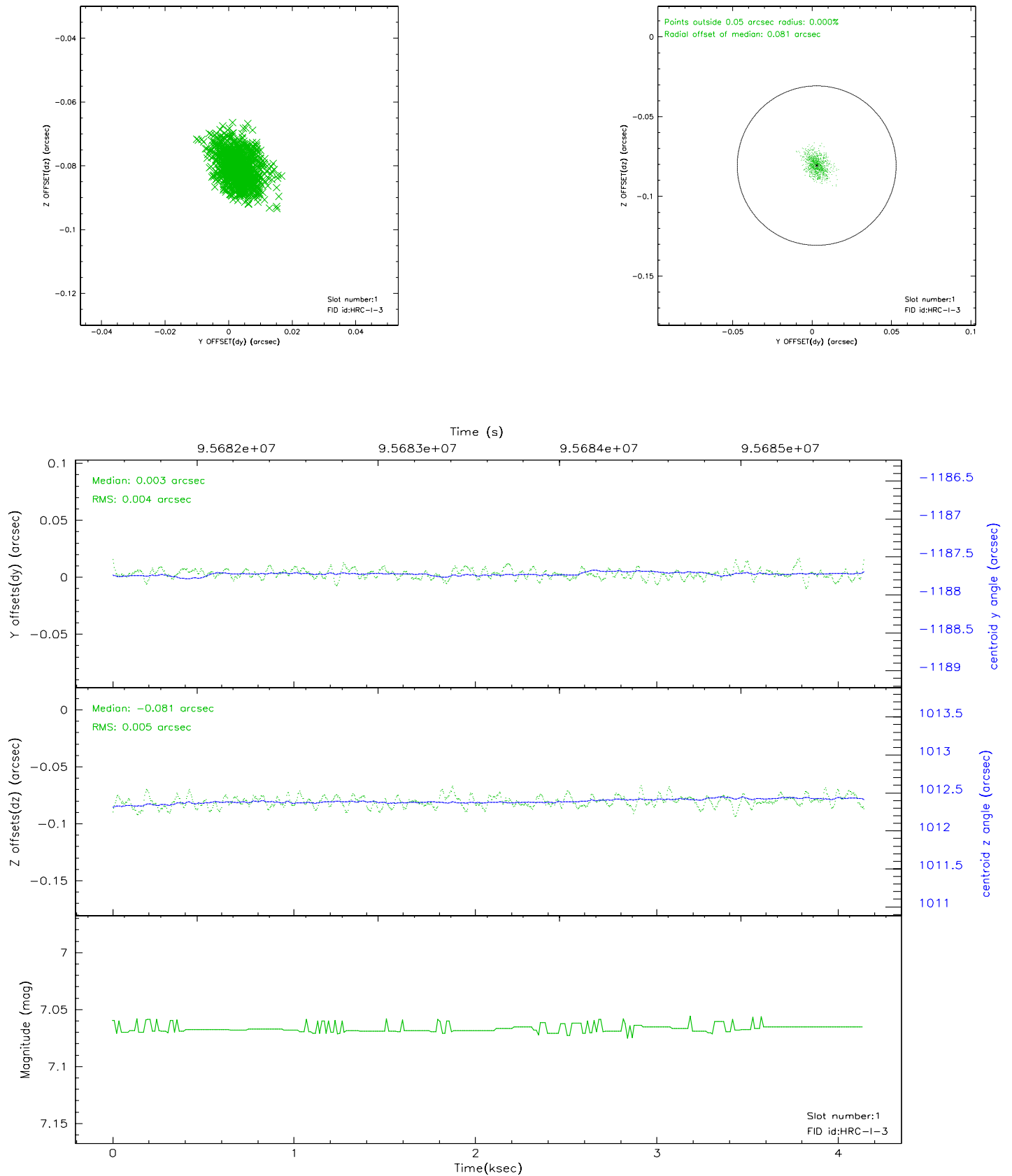


2.5 FID Slots

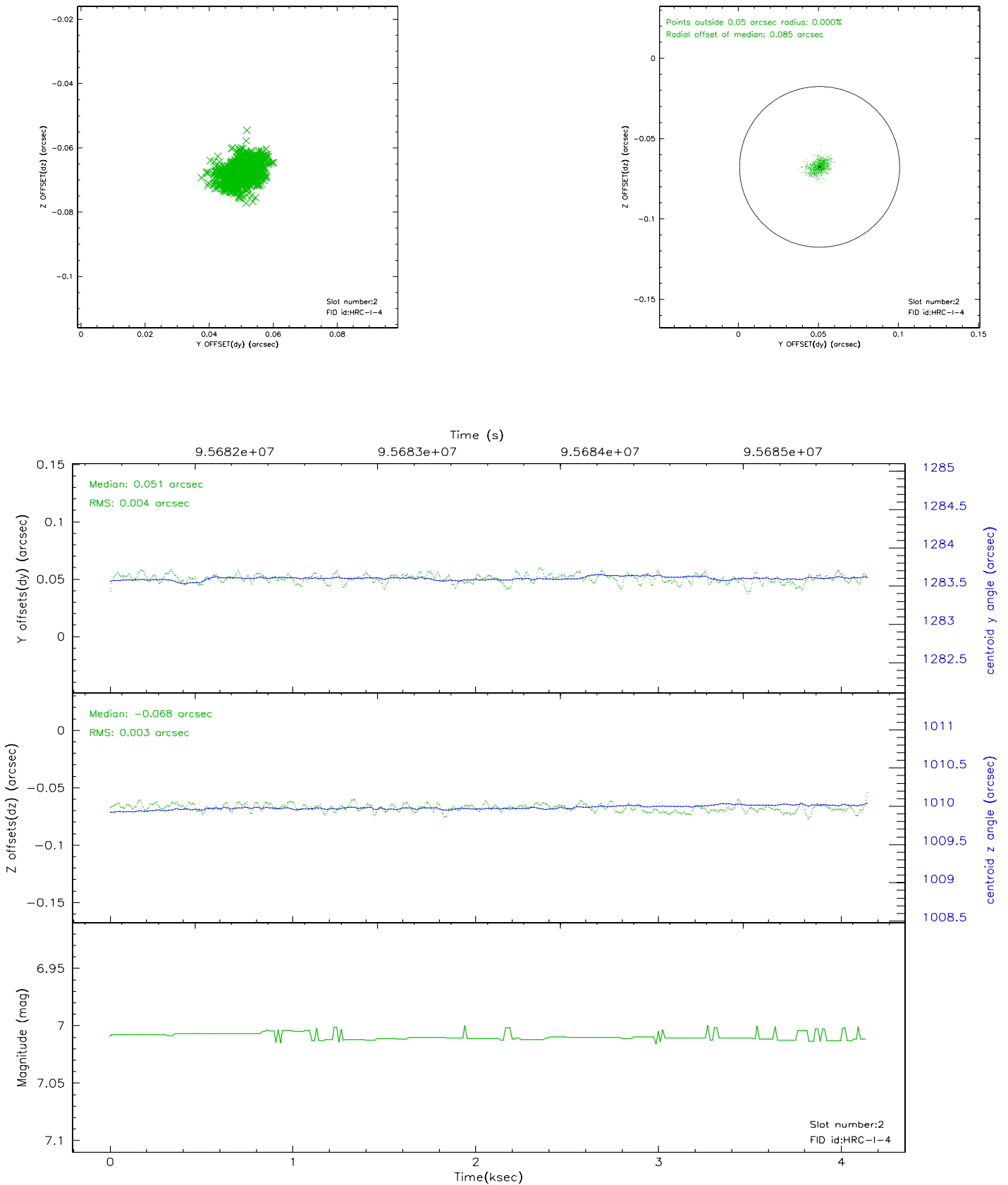
2.5.1 Slot 0



2.5.2 Slot 1

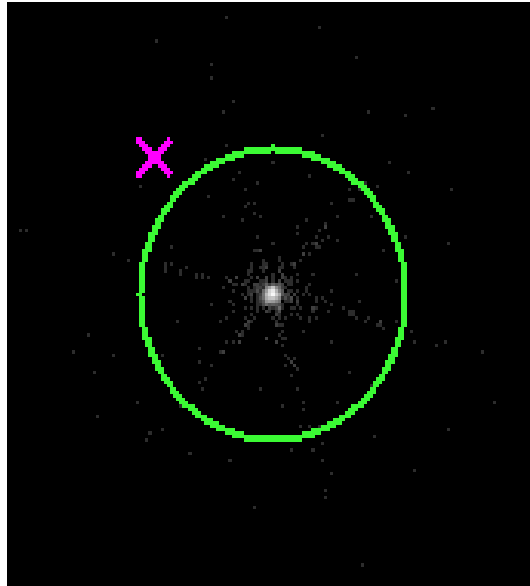


2.5.3 Slot 2

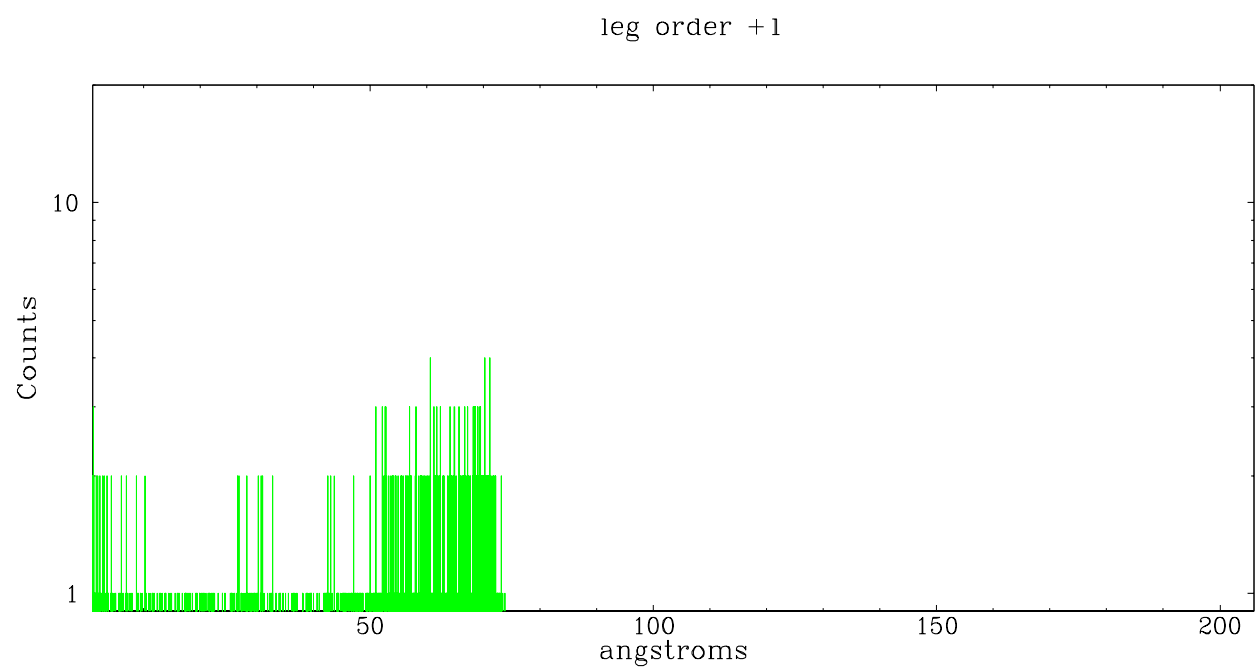
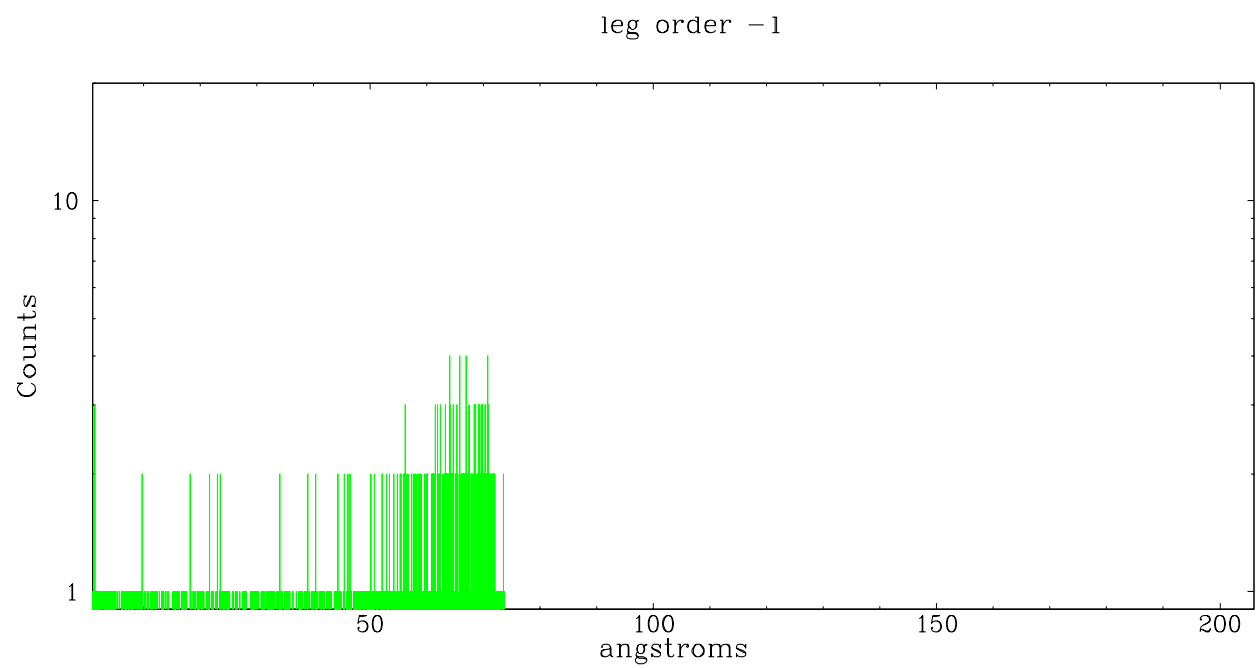


3 Gratings

3.1 LETG Arm



LETG Zero Order



A Summary

A.1 Status

V&V Scientist	Joy Nichols
V&V Date (YYYY-MM-DD)	2007.12.03
V&V Edition	1
V&V Disposition and Status	OK
V&V Charge Time	3.892

A.2 Comments

Incorrect coordinates given by observer. Source is found at
ra=13:16:21.836, dec=+29:05:55.19.

=====

The current observation has been reprocessed as part of Repro III ('C' supplement)

the purpose of which is to update all HRC-I ObsIDs since Jan 2000 to the

latest calibrations available for that configuration. Specifically, we are updating the DEGAP solution and the Gain Maps applied. For more information see the Repro IIIC web page

at

<http://asc.harvard.edu/cda/repro3.html#IIIC>

and the associated links.