

V&V Reference Report

L2 ASCDS Version : 8.4.5

Observation 557 - L2 Version 6
Chandra X-Ray Center

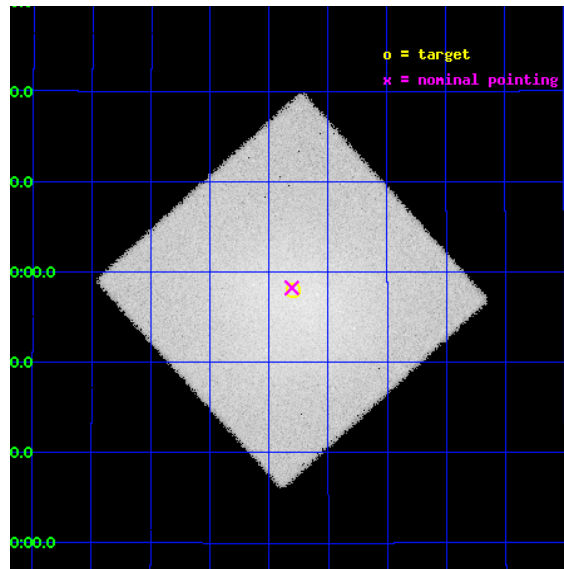
L2 Processing Date : Aug 22 2012

Contents

1	Front	2
2	OBI	3
2.1	OBI	3
2.1.1	Images	3
2.1.2	Parameters	4
2.1.3	Events	4
2.2	Compared Parameters	5
2.3	Aspect	6
2.4	Star Slots	9
2.4.1	Slot 3	9
2.4.2	Slot 4	10
2.4.3	Slot 5	11
2.4.4	Slot 6	12
2.4.5	Slot 7	13
2.5	FID Slots	14
2.5.1	Slot 0	14
2.5.2	Slot 1	15
2.5.3	Slot 2	16
A	Summary	17
A.1	Status	17
A.2	Comments	17

1 Front

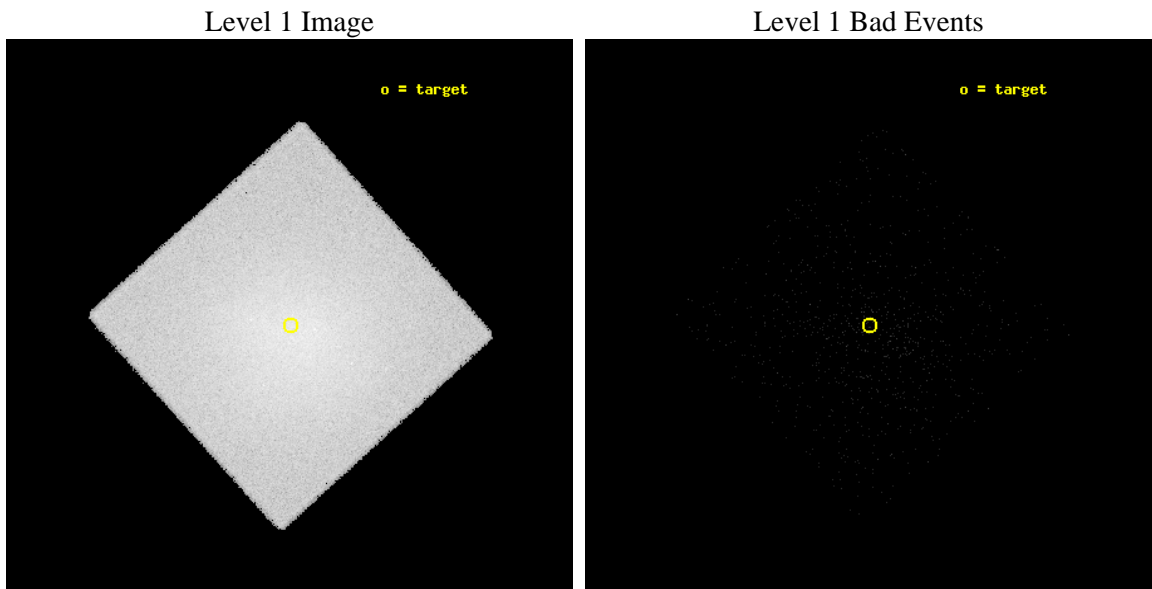
seq_num	890002	Sequence number
obs_id	557	Observation id
title	CALIBRATION OBSERVATION OF AN EXTENDED HARD SOURCE: THE COMA CLUSTER	
observer	Dr. CXC Calibration	Principal investigator
object	COMA CLUSTER	Source name
ra_targ	194.95	Observer's specified target RA [deg]
dec_targ	27.966667	Observer's specified target Dec [deg]
ra_nom	194.9517259219	Nominal RA [deg]
dec_nom	27.971083568771	Nominal Dec [deg]
roll_nom	92.903790879787	Nominal Roll [deg]
revision	6	Processing version of data
ontime	10234.881623209	[s]
livetime	10163.300657471	Ontime multiplied by DTCOR
l2events	479026	Number of level 2 events



2 OBI

2.1 OBI

2.1.1 Images



2.1.2 Parameters

obi_num	0	Obi number	sched_exp_time	9750.000000	[s] Scheduled observation exposure time
ascdsver	8.4.5	Processing system revision	ontime	10234.881623209	[s]
caldsver	4.5.1.1	 	l1events	682046	Number of level 1 events
date	2012-08-22T13:20:45	Date and time of file creation			
revision	6	Processing version of data			

2.1.3 Events

Level 1 Events

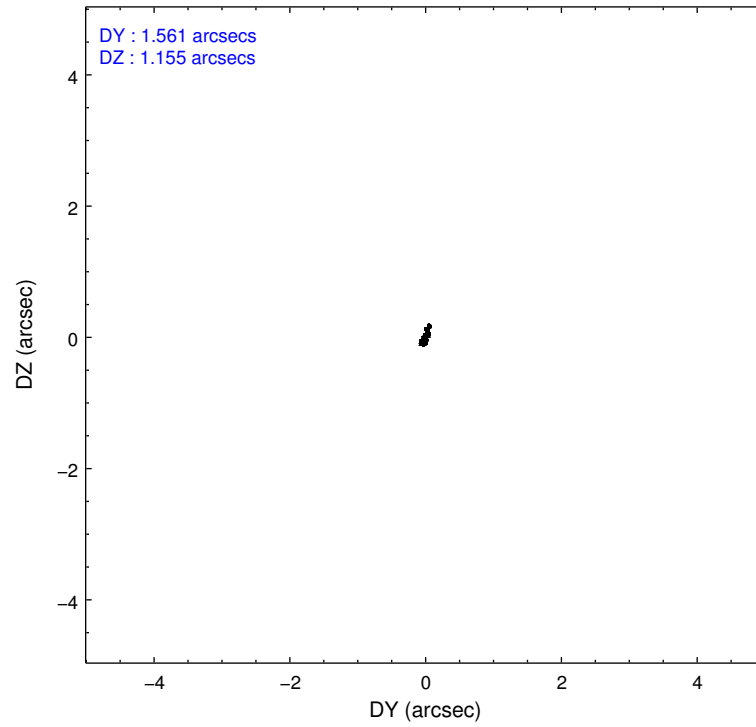
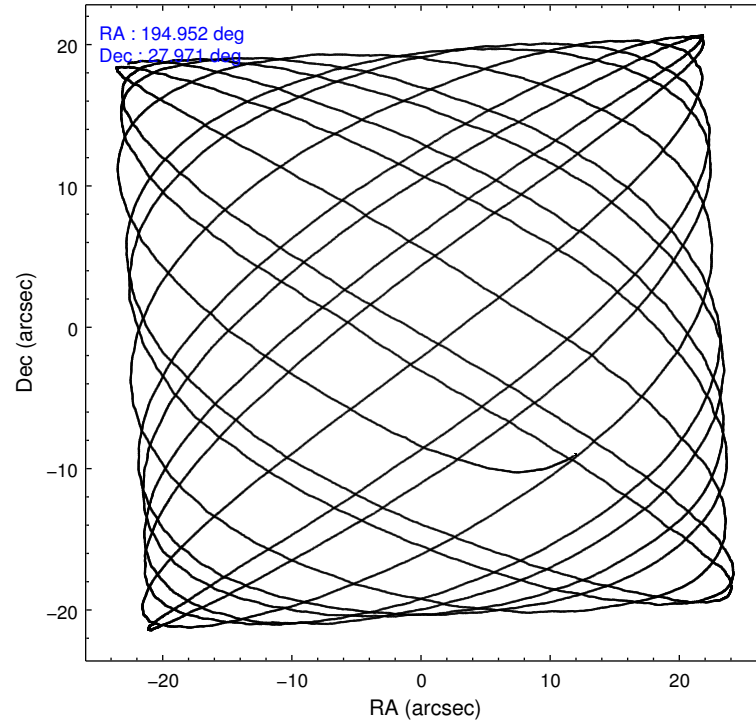
	segment 0
level 1 events	682046
rejected events	35897
rejected %	5%

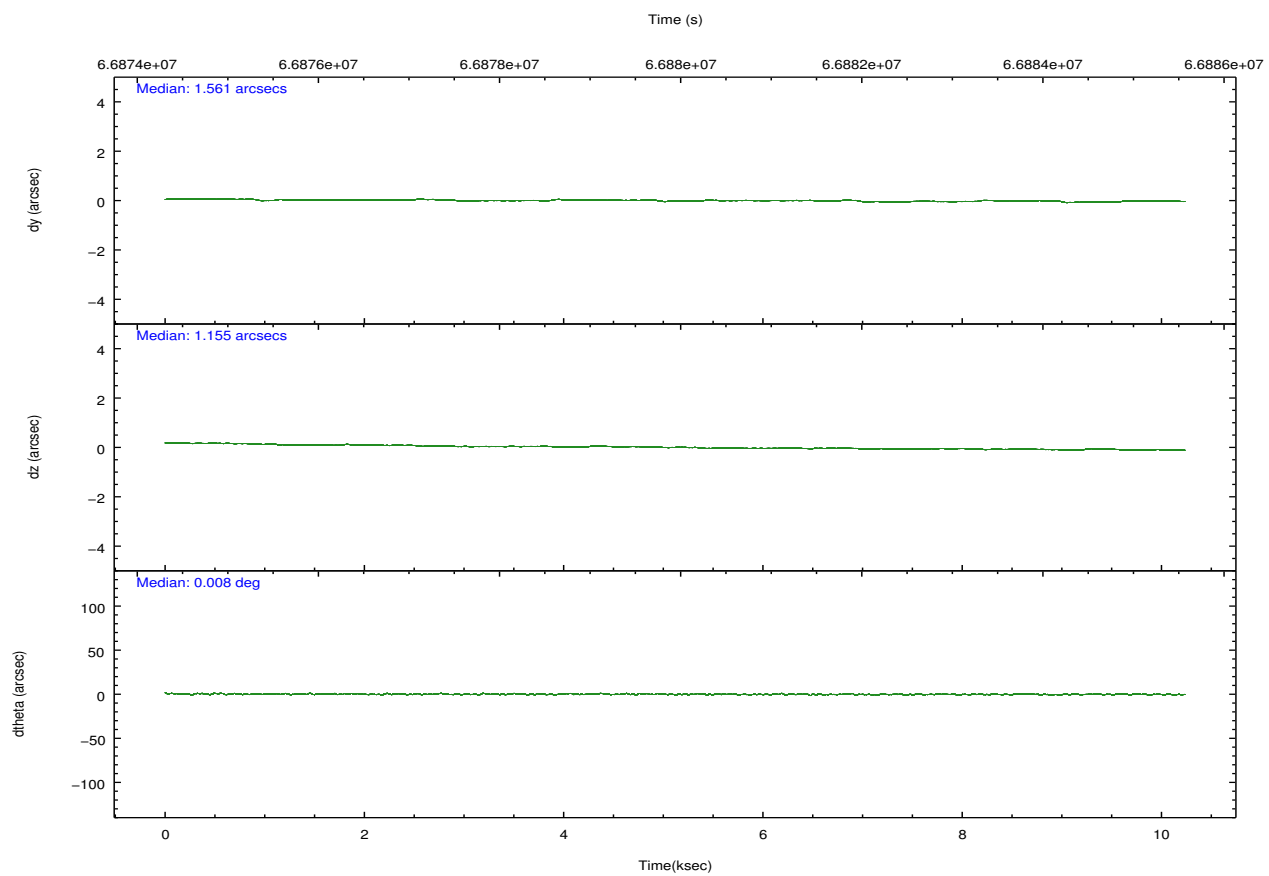
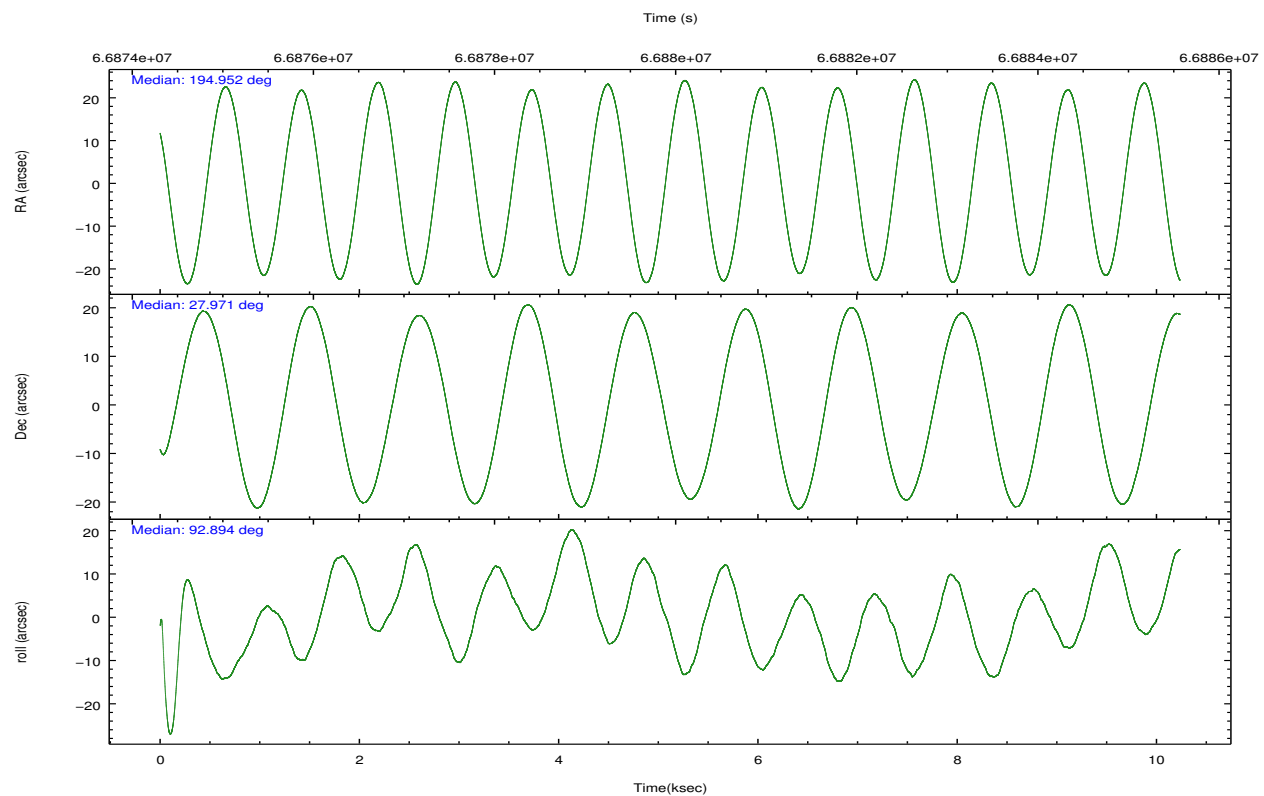
2.2 Compared Parameters

Parameter	Planned	Actual
Instrument	HRC	HRC
Detector	HRC-I	HRC-I
Grating	NONE	NONE
Data mode	OBSERVING	OBSERVING
Observation mode	POINTING	POINTING
[deg] Pointing RA	194.968855	194.9517259218956
[deg] Pointing Dec	27.948182	27.97108356877136
[deg] Pointing Roll	92.991164	92.90379087978722
[s] Window start time (MET)	65750464.184000	65750464.184000
[s] Window stop time (MET)	68256064.184000	68256064.184000
[mm] SIM focus pos	-1.040293	-1.038866356238299
[mm] SIM defocus	0	0.001426264420575141
[mm] SIM translation stage pos	126.985494	126.9854943052878
[mm] SIM translation stage offset	0	-5.413686238853188e-06
[s] Observation start time (MET)	66875305.184000	66874218.123616
Observation start date	2000-02-14T00:27:21	2000-02-14T00:10:18
[s] Observation end time (MET)	66885055.184000	66885199.974016
Observation end date	2000-02-14T03:09:51	2000-02-14T03:13:19

Parameter	Planned	Actual
Obspar format version number	7	7
Obspar file type	PREDICTED	ACTUAL
Obspar update status	NONE	UPDATED

2.3 Aspect



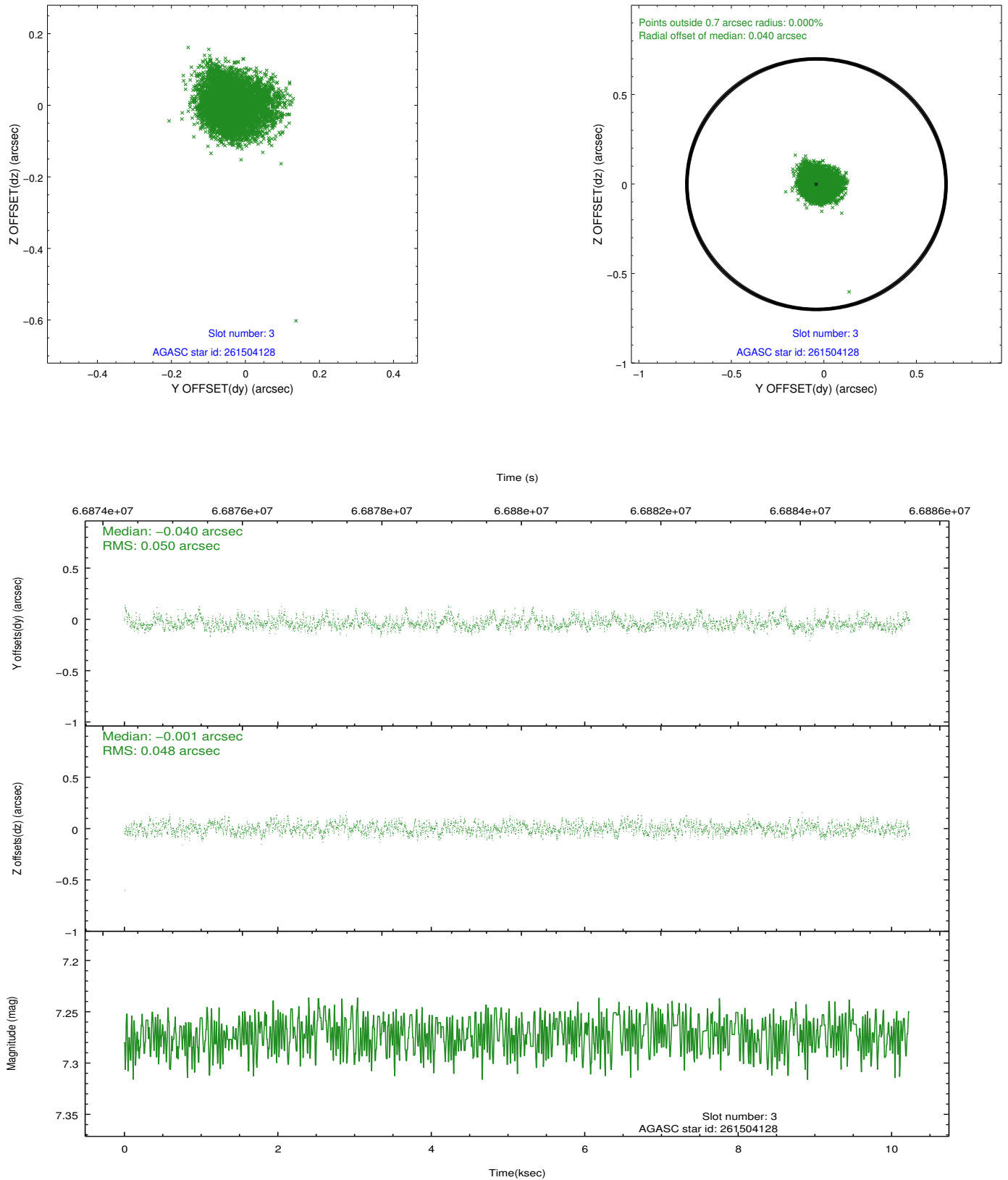


Slot Statistics

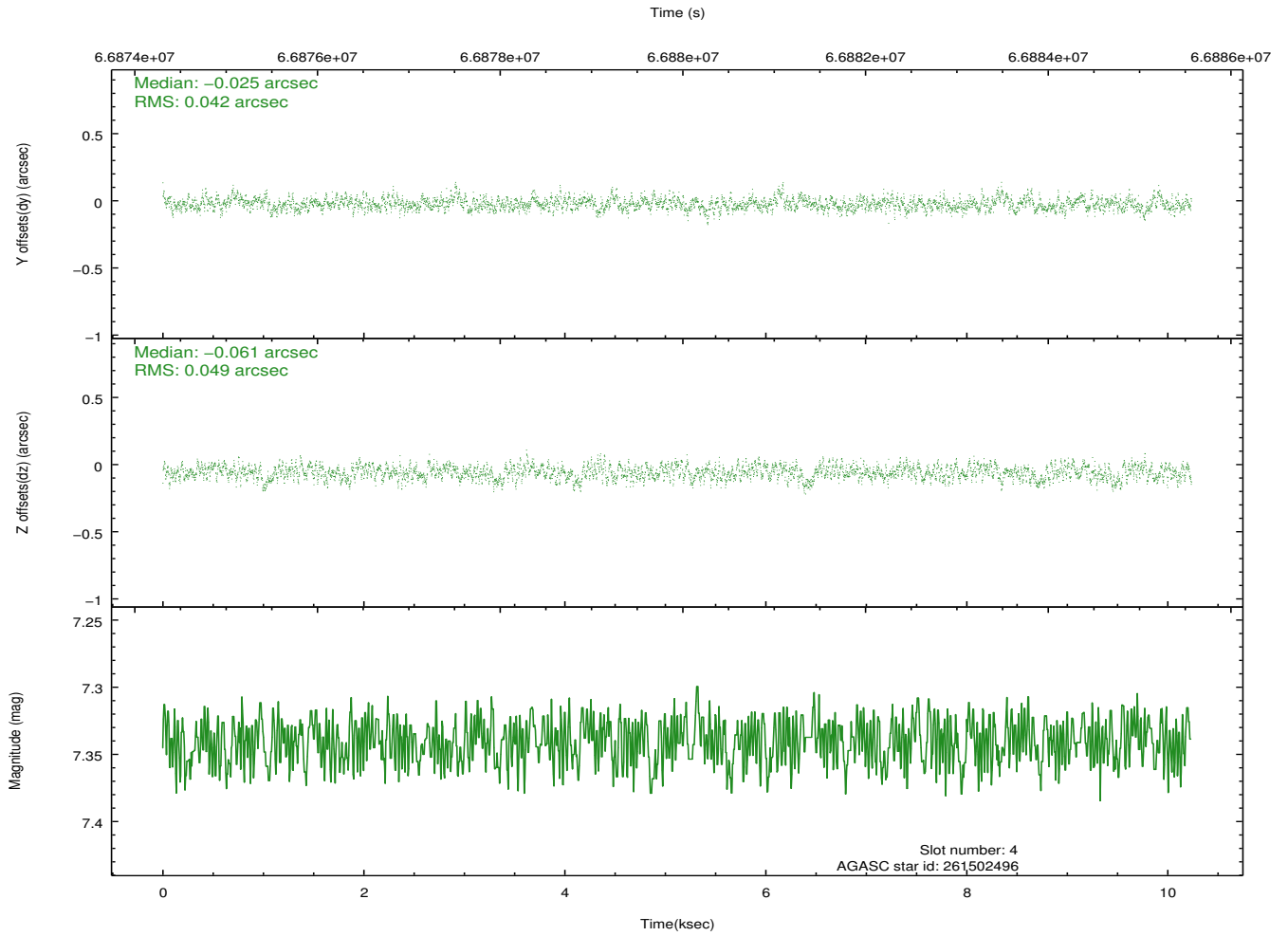
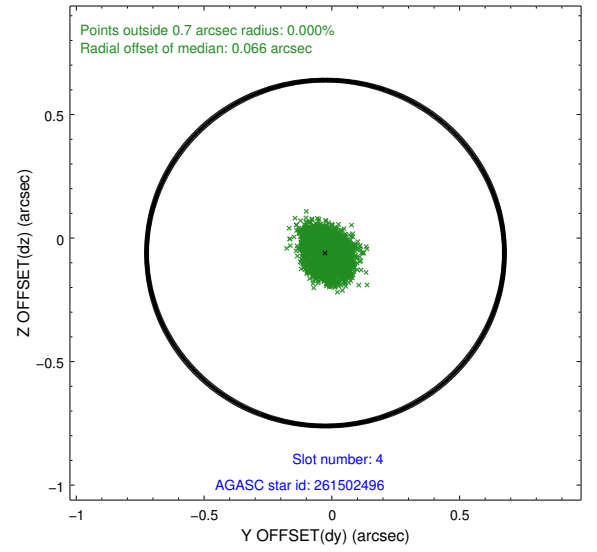
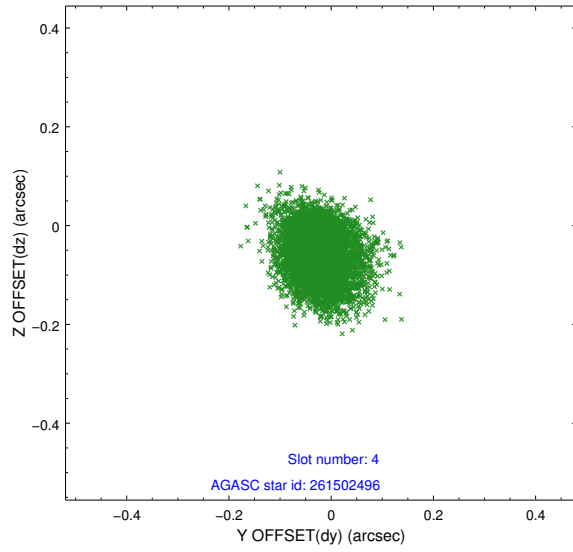
slot	status	id	mag	n_pts	med_dy	med_dz	dr1	dr2	ra	dec	mean_y	mean_z
0	FID	HRC-I-1	6.94	2497	0.024	-0.032	0.007	0.012	0.000000	0.000000	-756.96	-1288.93
1	FID	HRC-I-2	6.99	2497	0.026	0.003	0.005	0.009	0.000000	0.000000	855.37	-1290.97
2	FID	HRC-I-3	7.03	2497	0.069	-0.060	0.006	0.012	0.000000	0.000000	-1185.08	1015.08
3	GUIDE	261504128	7.27	4990	-0.040	-0.001	0.075	0.117	194.640935	28.319570	1390.50	968.34
4	GUIDE	261502496	7.34	4994	-0.025	-0.061	0.069	0.109	194.887297	28.065668	436.07	236.98
5	GUIDE	261498392	8.31	4994	0.023	-0.036	0.058	0.097	194.888587	28.238913	1058.52	199.91
6	GUIDE	261494640	9.93	4991	-0.085	0.183	0.125	0.203	195.174515	28.510071	1986.76	-754.66
7	GUIDE	261505232	9.82	4982	0.114	-0.082	0.126	0.204	194.216553	27.802521	-391.34	2419.17

2.4 Star Slots

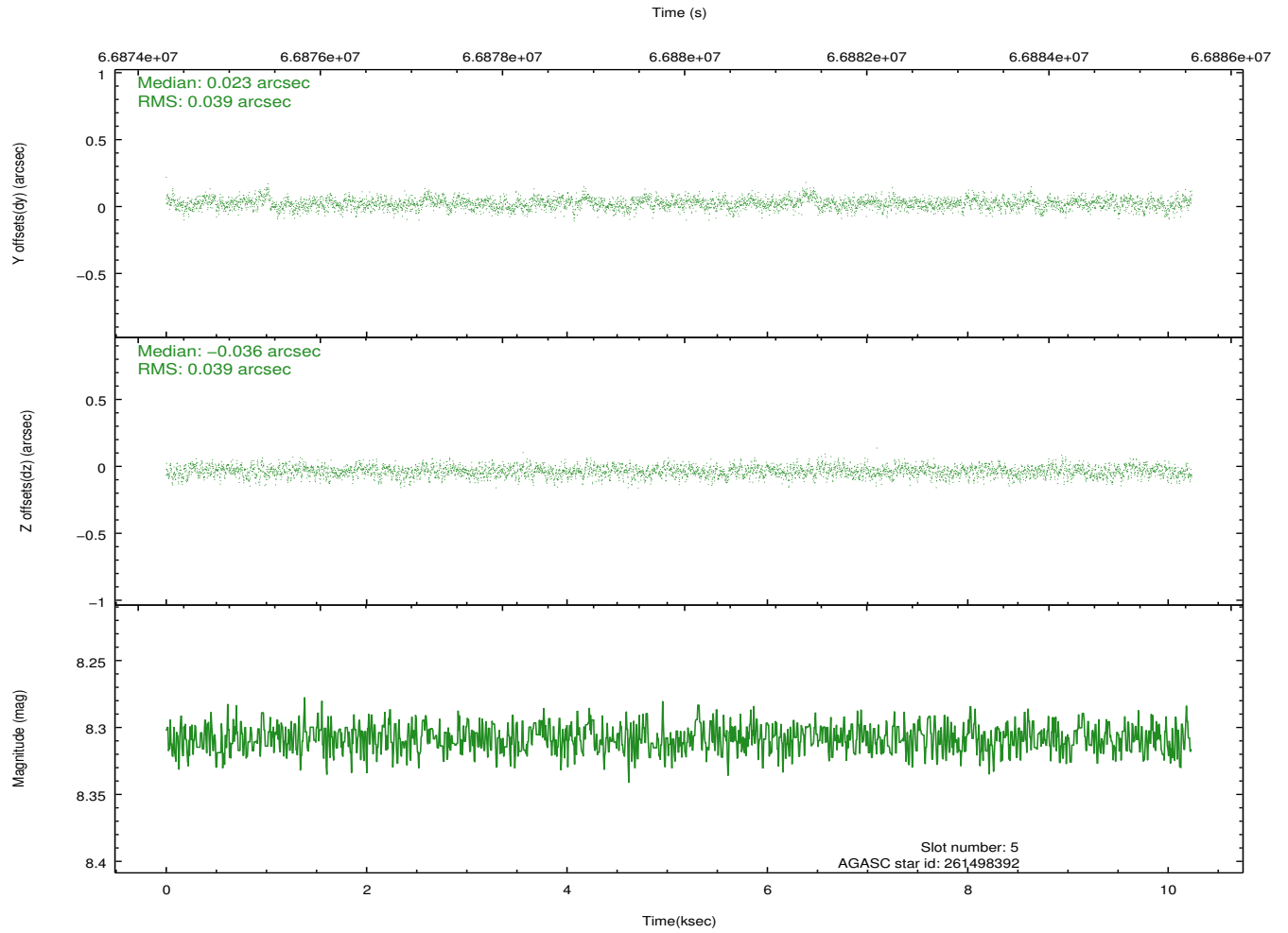
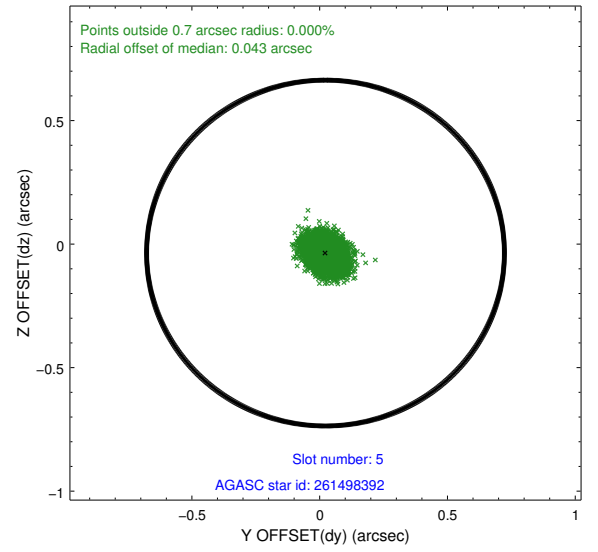
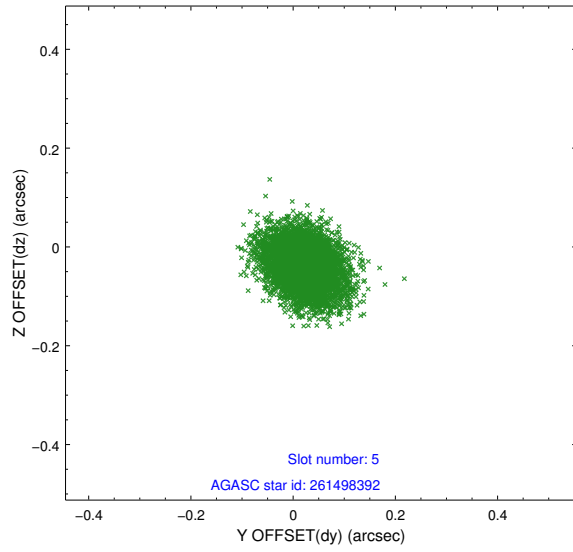
2.4.1 Slot 3



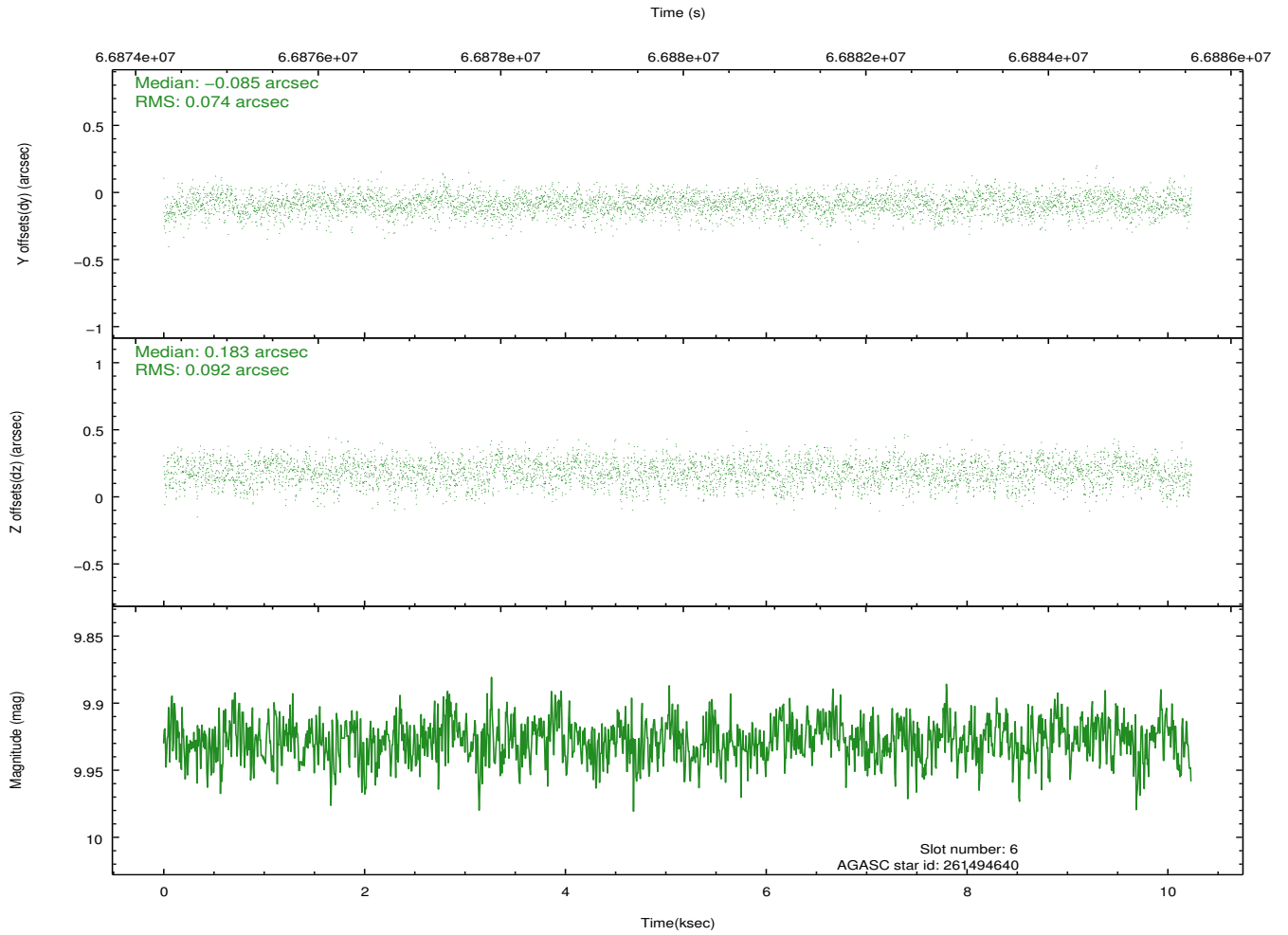
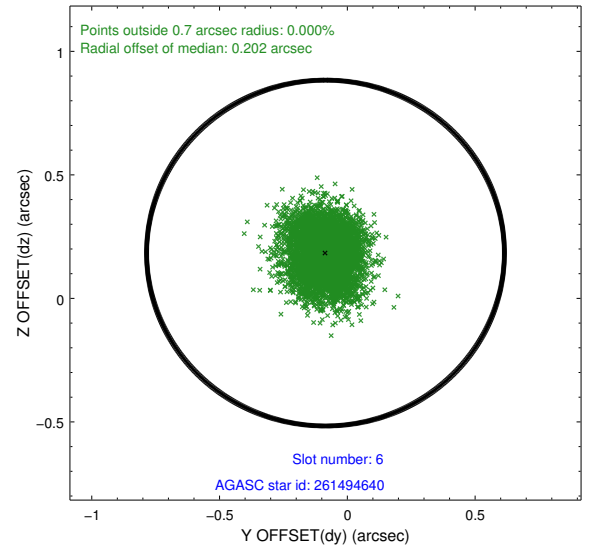
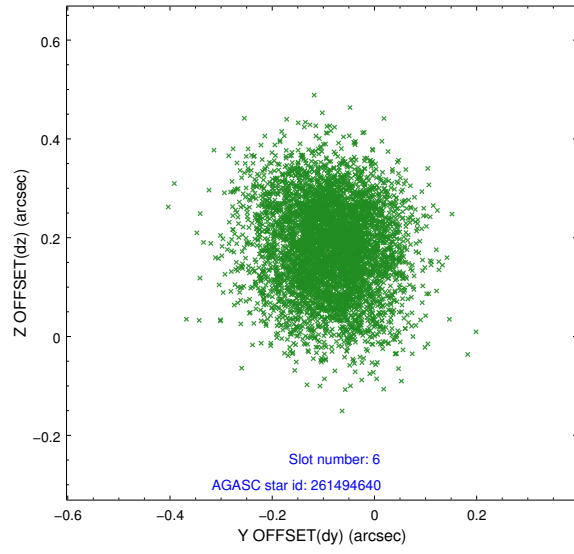
2.4.2 Slot 4



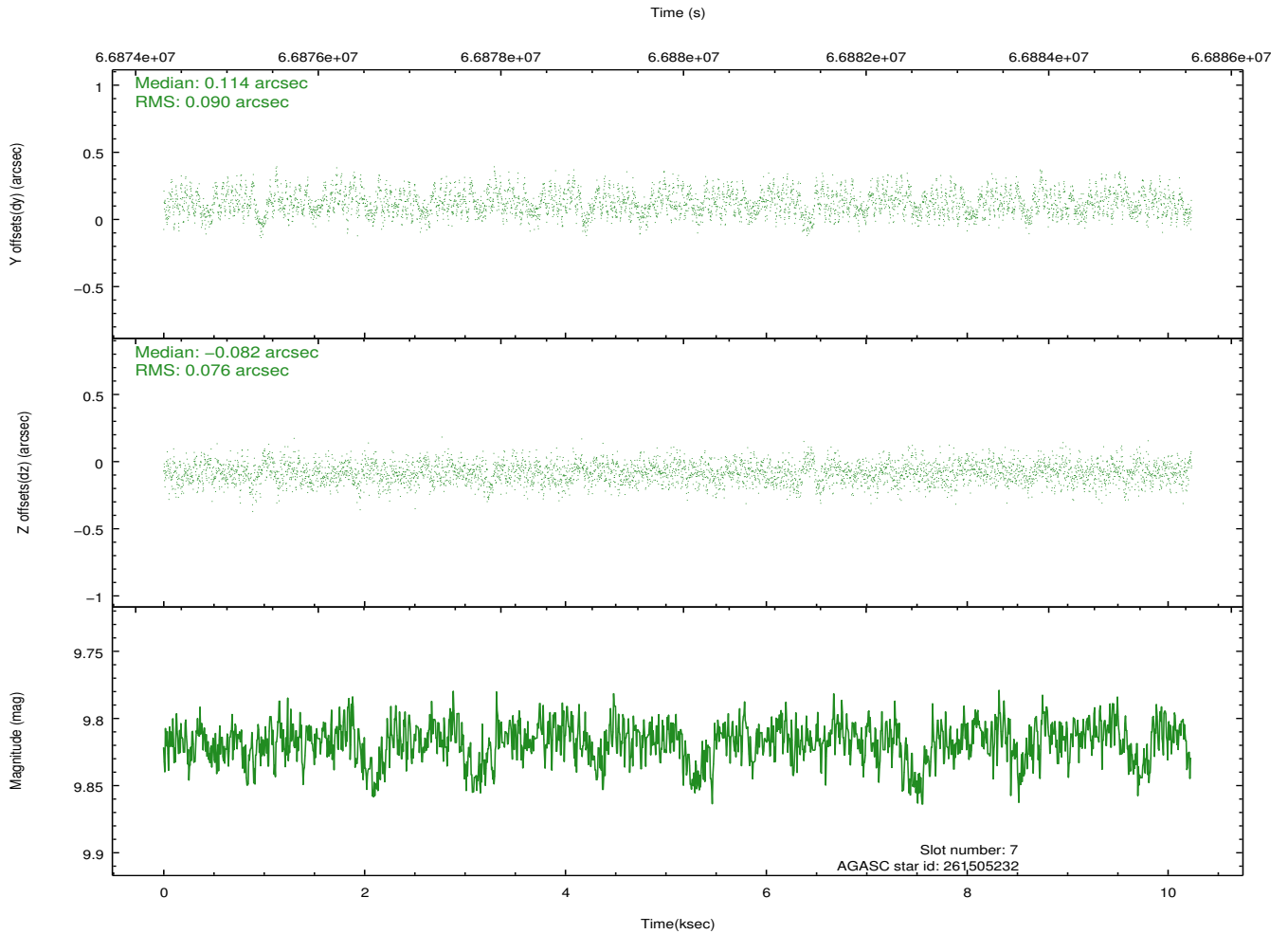
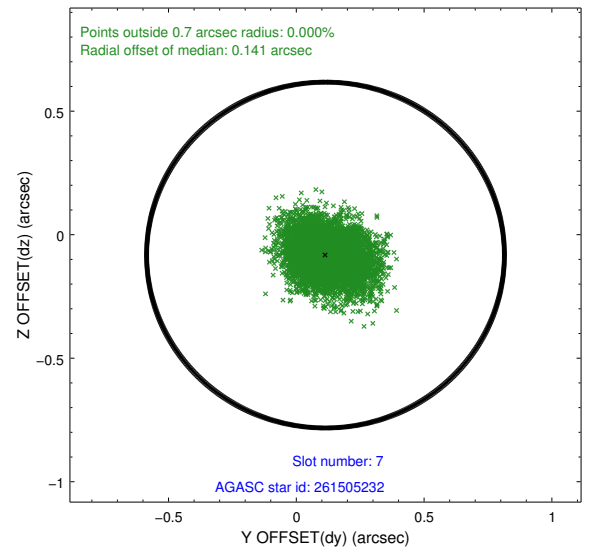
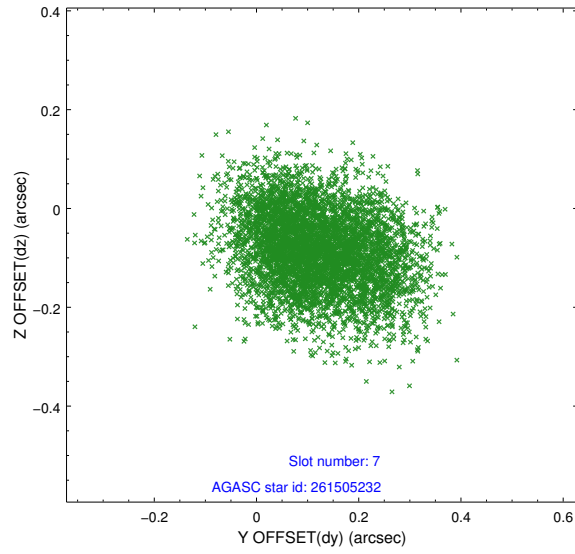
2.4.3 Slot 5



2.4.4 Slot 6

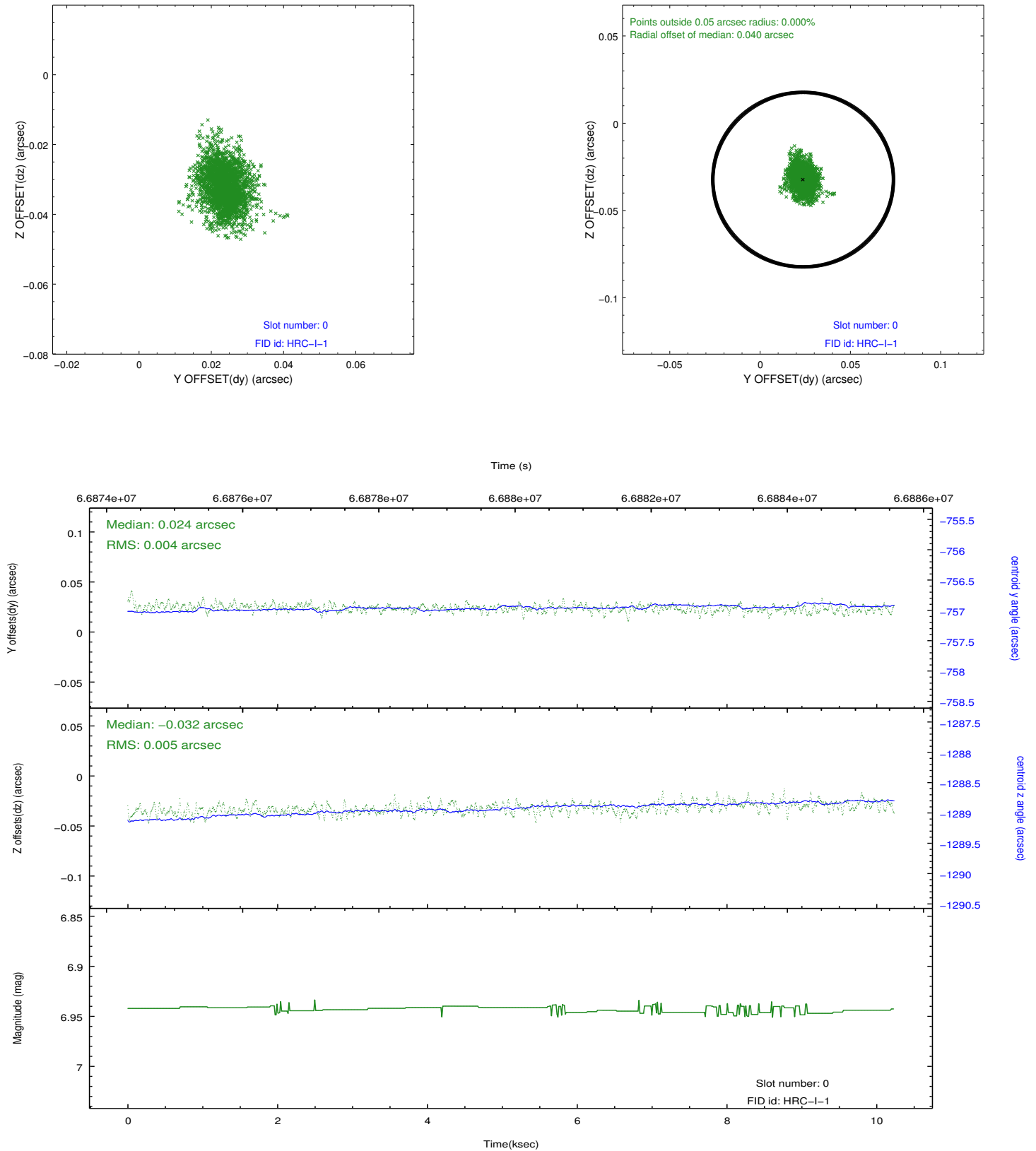


2.4.5 Slot 7

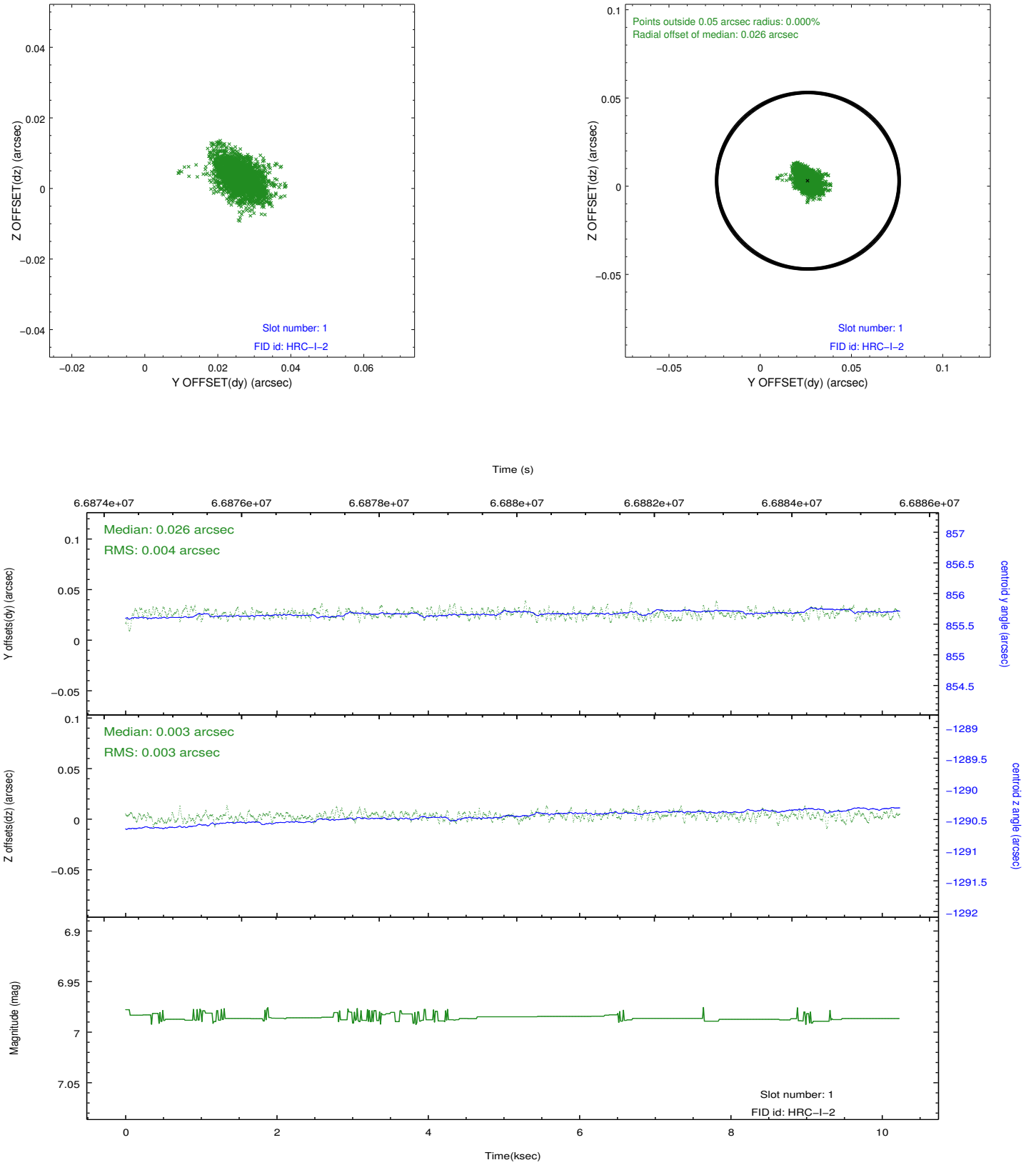


2.5 FID Slots

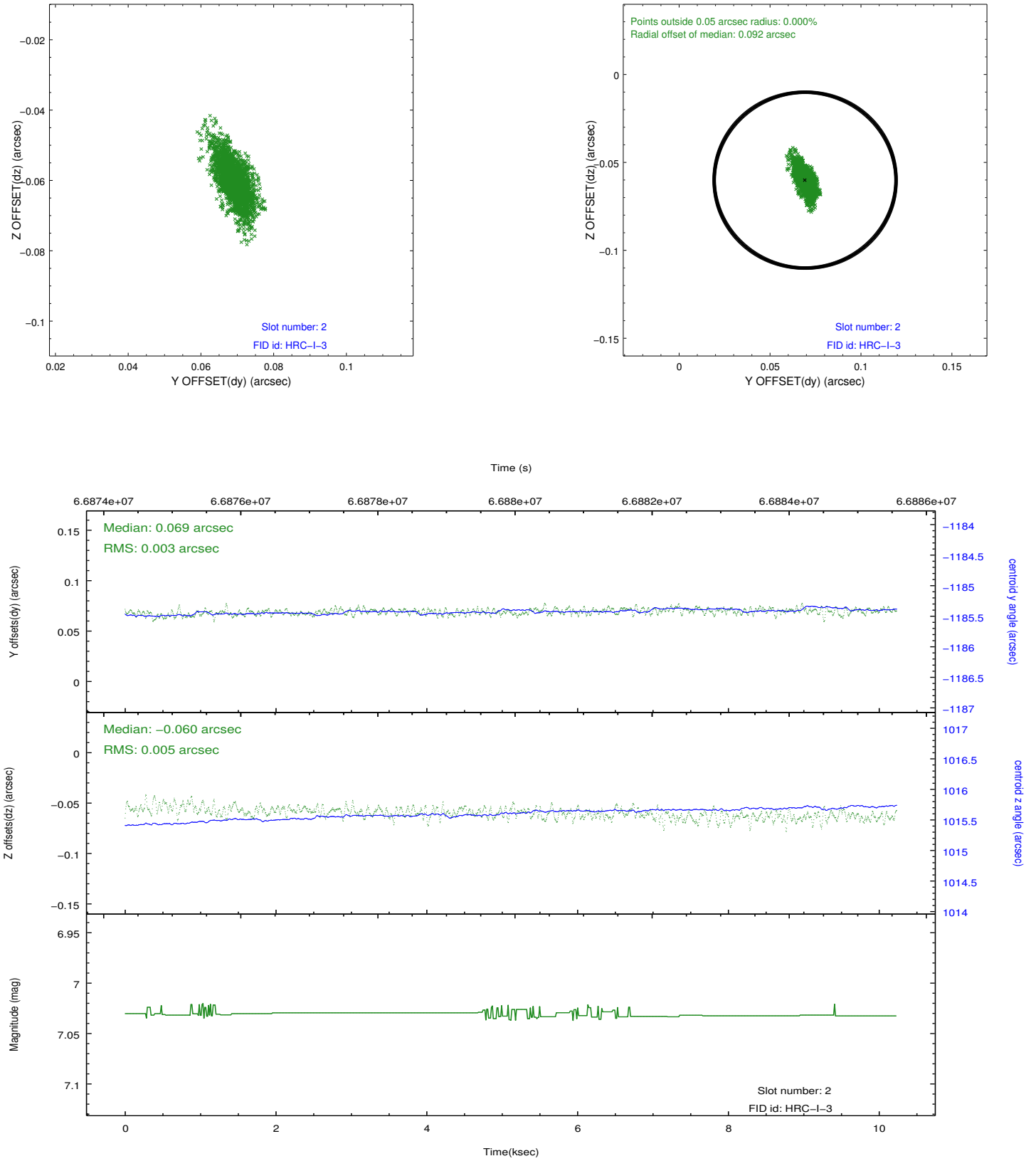
2.5.1 Slot 0



2.5.2 Slot 1



2.5.3 Slot 2



A Summary

A.1 Status

V&V Scientist	Jen Lauer
V&V Date (YYYY-MM-DD)	2012.08.23
V&V Edition	1
V&V Disposition and Status	OK
V&V Charge Time	10.232

A.2 Comments

Window constraint met.