

V&V Reference Report

L2 ASCDS Version : 8.4.5

Observation 230 - L2 Version 4
Chandra X-Ray Center

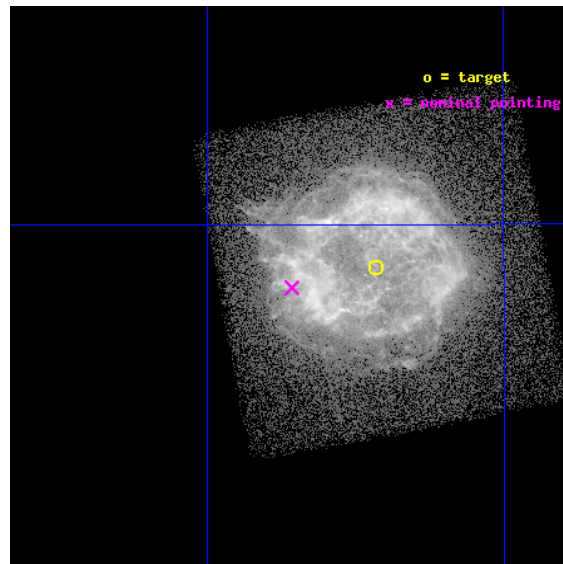
L2 Processing Date : Aug 23 2012

Contents

1	Front	2
2	OBI	3
2.1	OBI	3
2.1.1	Images	3
2.1.2	Bias	3
2.1.3	Parameters	4
2.1.4	Events	4
2.2	Compared Parameters	5
2.3	Aspect	6
2.4	Star Slots	9
2.4.1	Slot 3	9
2.4.2	Slot 4	10
2.4.3	Slot 5	11
2.4.4	Slot 6	12
2.4.5	Slot 7	13
2.5	FID Slots	14
2.5.1	Slot 0	14
2.5.2	Slot 1	15
2.5.3	Slot 2	16
A	Summary	17
A.1	Status	17
A.2	Comments	17

1 Front

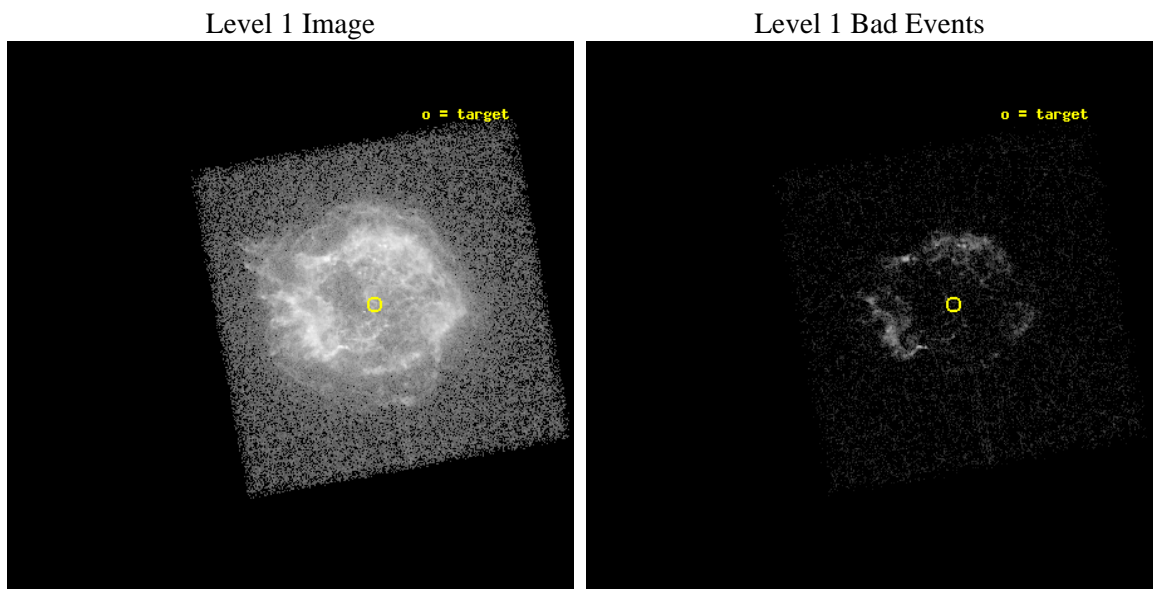
seq_num	590098	Sequence number
obs_id	230	Observation id
title	ACIS CHIP RESPONSE TO CAS A, APR. 99	Proposal title
observer	Dr. CXC Calibration	Principal investigator
object	CAS A [Chip S3, T=120, Offsets=-2,0,0]	Source name
dtcycle	0	
cycle	P	events from which exps? Prim/Second/Both
ra_targ	350.8575	Observer's specified target RA [deg]
dec_targ	58.814833	Observer's specified target Dec [deg]
ra_nom	350.92876949785	Nominal RA [deg]
dec_nom	58.806095312322	Nominal Dec [deg]
roll_nom	349.65143526606	Nominal Roll [deg]
revision	4	Processing version of data
ontime	2080.7429878265	Sum of GTIs [s]
livetime	2054.3953672416	Livetime [s]
ontime4	3302.5841940343	Sum of GTIs [s]
ontime5	4038.0006159693	Sum of GTIs [s]
ontime6	3950.3307094574	Sum of GTIs [s]
ontime7	2080.7429878265	Sum of GTIs [s]
ontime8	3856.4252821207	Sum of GTIs [s]
ontime9	3807.7696591169	Sum of GTIs [s]
l2events	667122	Number of level 2 events



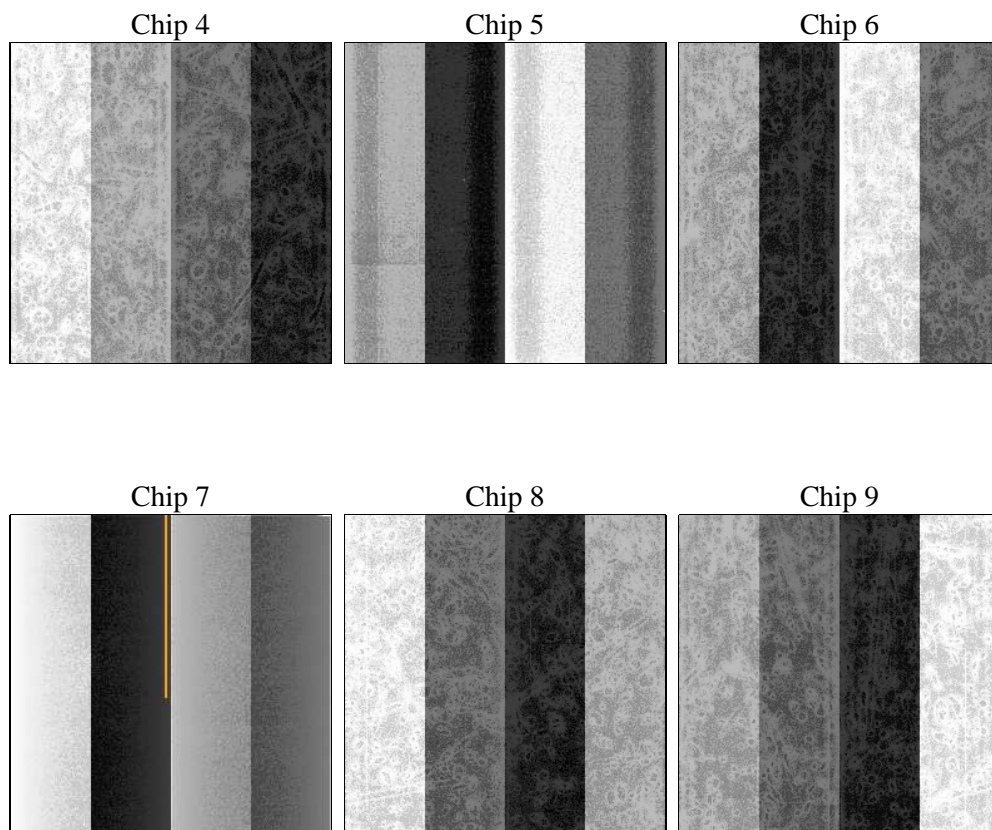
2 OBI

2.1 OBI

2.1.1 Images



2.1.2 Bias



2.1.3 Parameters

obi_num	0	Obi number	sched_exp_time	5000.000000	[s] Scheduled observation exposure time
ascdsver	8.4.5	Processing system revision	ontime	2080.7429878265	Sum of GTIs [s]
caldbver	4.5.1.1	 	ontime4	3302.5841940343	Sum of GTIs [s]
date	2012-08-23T19:14:53	Date and time of file creation	ontime5	4038.0006159693	Sum of GTIs [s]
revision	4	Processing version of data	ontime6	3950.3307094574	Sum of GTIs [s]
			ontime7	2080.7429878265	Sum of GTIs [s]
			ontime8	3856.4252821207	Sum of GTIs [s]
			ontime9	3807.7696591169	Sum of GTIs [s]
			l1events	749197	Number of level 1 events

2.1.4 Events

	ccd 4	ccd 5	ccd 6	ccd 7	ccd 8	ccd 9
level 1 events	0	0	0	749197	0	0
rejected events	0	0	0	75394	0	0
rejected %	0%	0%	0%	10%	0%	0%

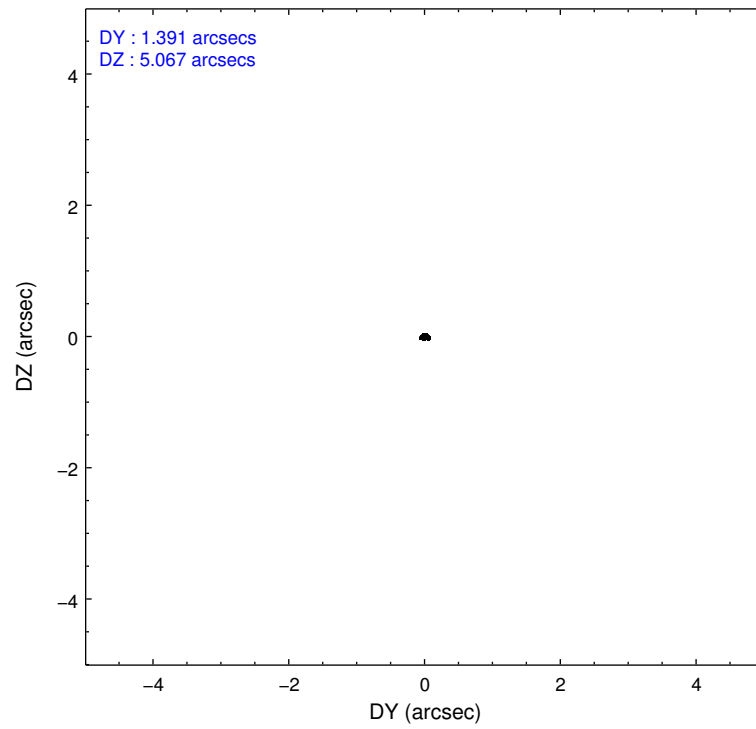
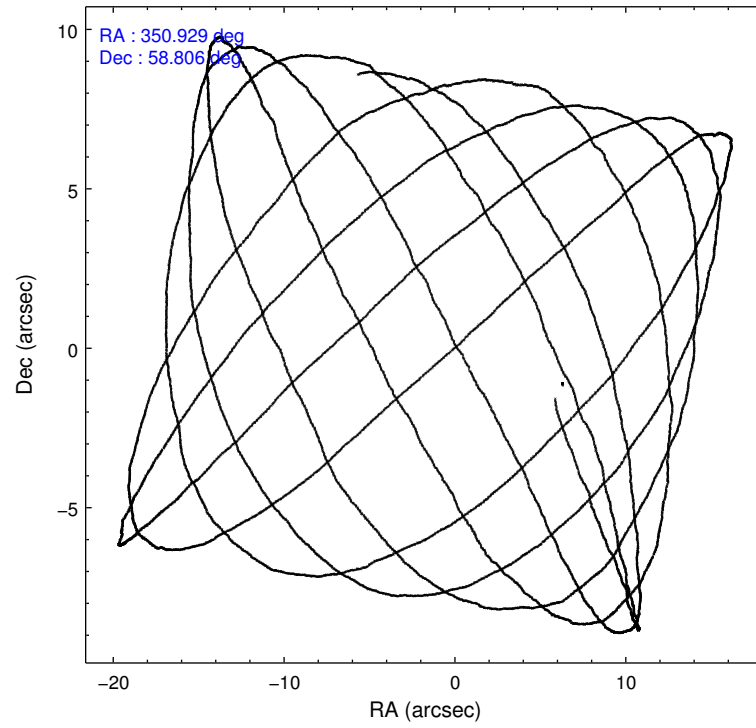
	ccd 4	ccd 5	ccd 6	ccd 7	ccd 8	ccd 9
grade 0 events	0	0	0	170806	0	0
	0%	0%	0%	22%	0%	0%
grade 1 events	0	0	0	3660	0	0
	0%	0%	0%	0%	0%	0%
grade 2 events	0	0	0	179921	0	0
	0%	0%	0%	24%	0%	0%
grade 3 events	0	0	0	80172	0	0
	0%	0%	0%	10%	0%	0%
grade 4 events	0	0	0	79009	0	0
	0%	0%	0%	10%	0%	0%
grade 5 events	0	0	0	14546	0	0
	0%	0%	0%	1%	0%	0%
grade 6 events	0	0	0	164966	0	0
	0%	0%	0%	22%	0%	0%
grade 7 events	0	0	0	56117	0	0
	0%	0%	0%	7%	0%	0%

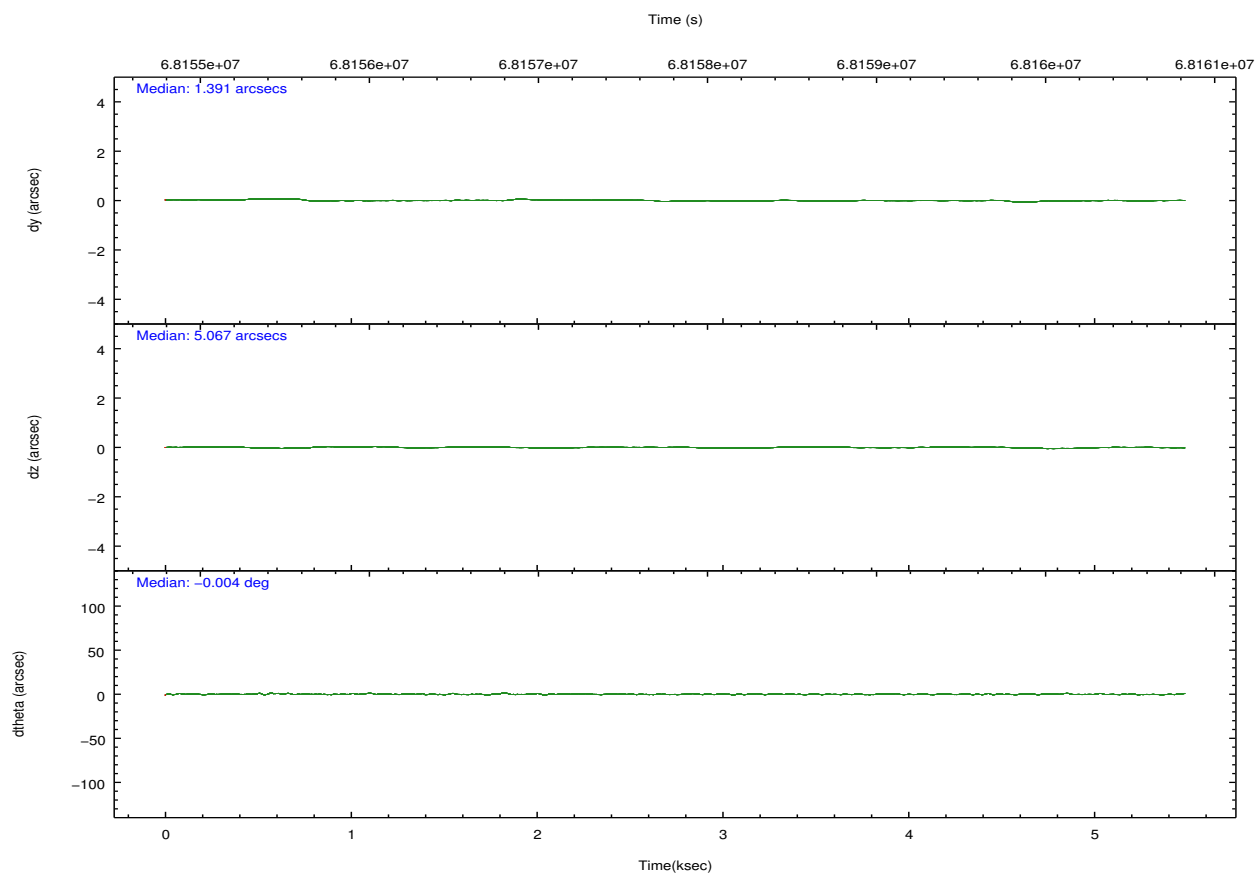
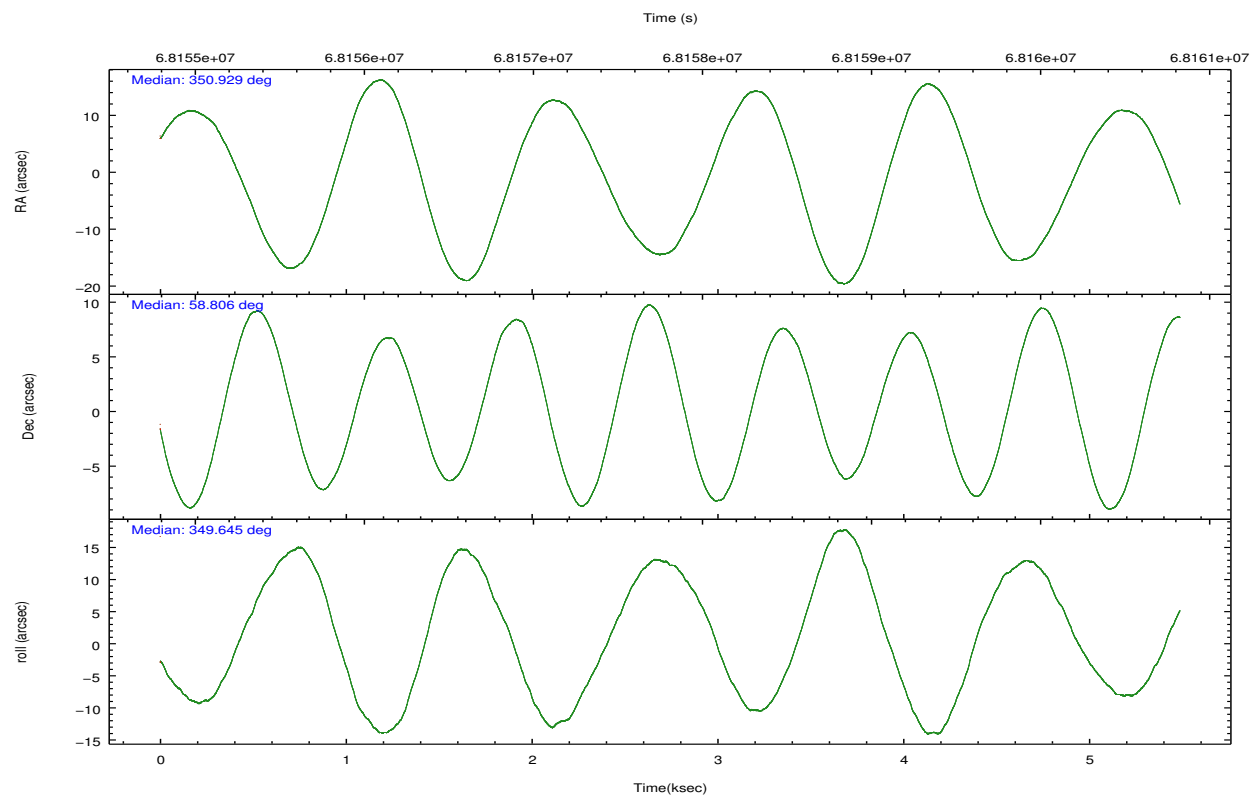
2.2 Compared Parameters

Parameter	Planned	Actual
Instrument	ACIS	ACIS
Detector	ACIS-456789	ACIS-456789
Grating	NONE	NONE
Data mode	FAINT	FAINT
Observation mode	POINTING	POINTING
[deg] Pointing RA	350.878588	350.9287694978484
[deg] Pointing Dec	58.796883	58.80609531232214
[deg] Pointing Roll	349.537734	349.65143526606
[s] Window start time (MET)	65750464.184000	65750464.184000
[s] Window stop time (MET)	68256064.184000	68256064.184000
[mm] SIM focus pos	-0.684267	-0.6828225247311905
[mm] SIM defocus	0	0.001444936568705701
[mm] SIM translation stage pos	-190.132523	-190.1425803651734
[mm] SIM translation stage offset	0	0.01005778216563158
[s] Observation start time (MET)	68155550.184000	68154884.486735
Observation start date	2000-02-28T20:04:46	2000-02-28T19:54:44
[s] Observation end time (MET)	68160550.184000	68160683.936947
Observation end date	2000-02-28T21:28:06	2000-02-28T21:31:23
Read mode	TIMED	TIMED

Parameter	Planned	Actual
Obspar format version number	7	7
Obspar file type	PREDICTED	ACTUAL
Obspar update status	NONE	UPDATED
Number of optional ACIS chips dropped	0	0
On-chip summing requested	N	N
Subarray requested	NONE	NONE
Alternating exposures requested	N	N
[s] Primary exposure time	0.000000	3.2

2.3 Aspect



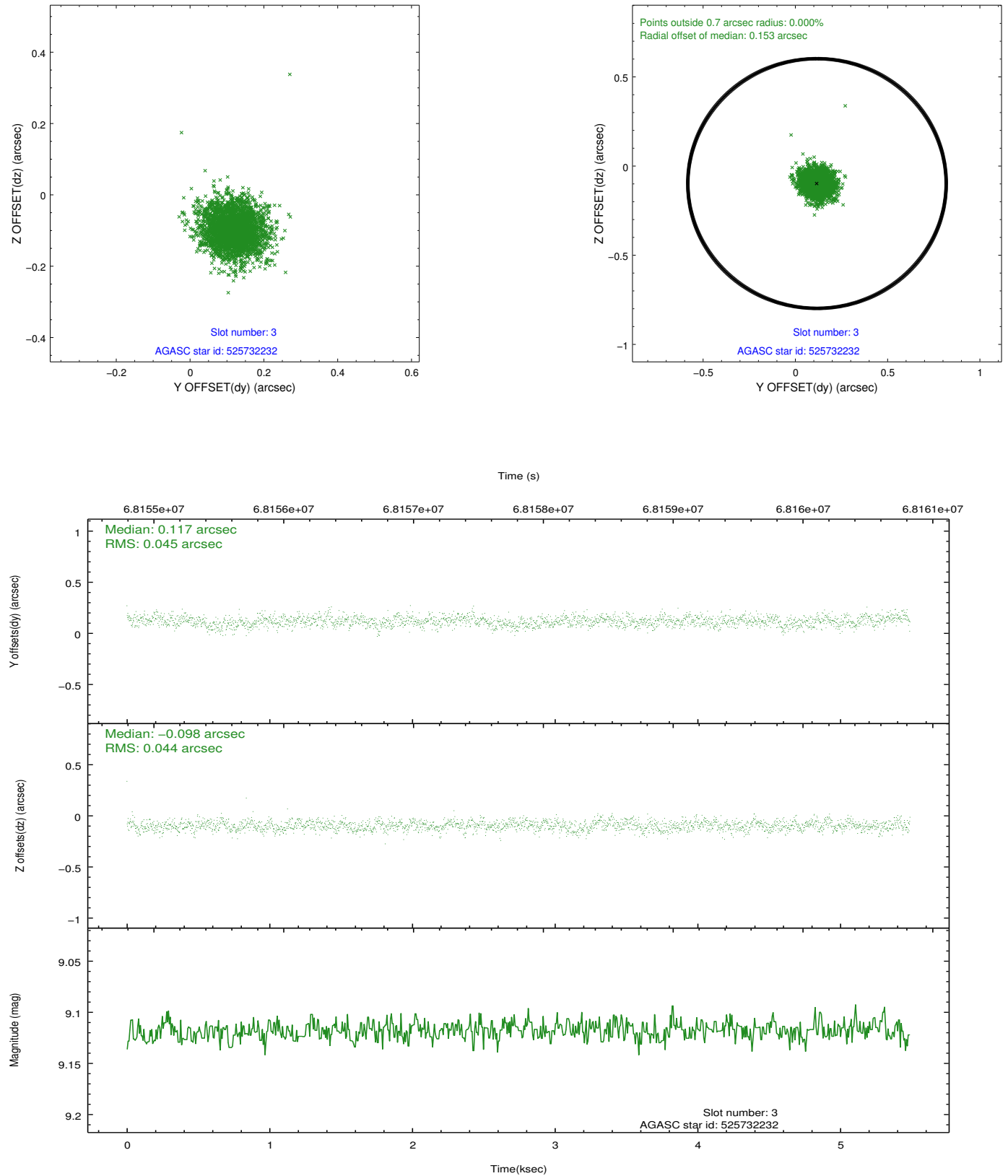


Slot Statistics

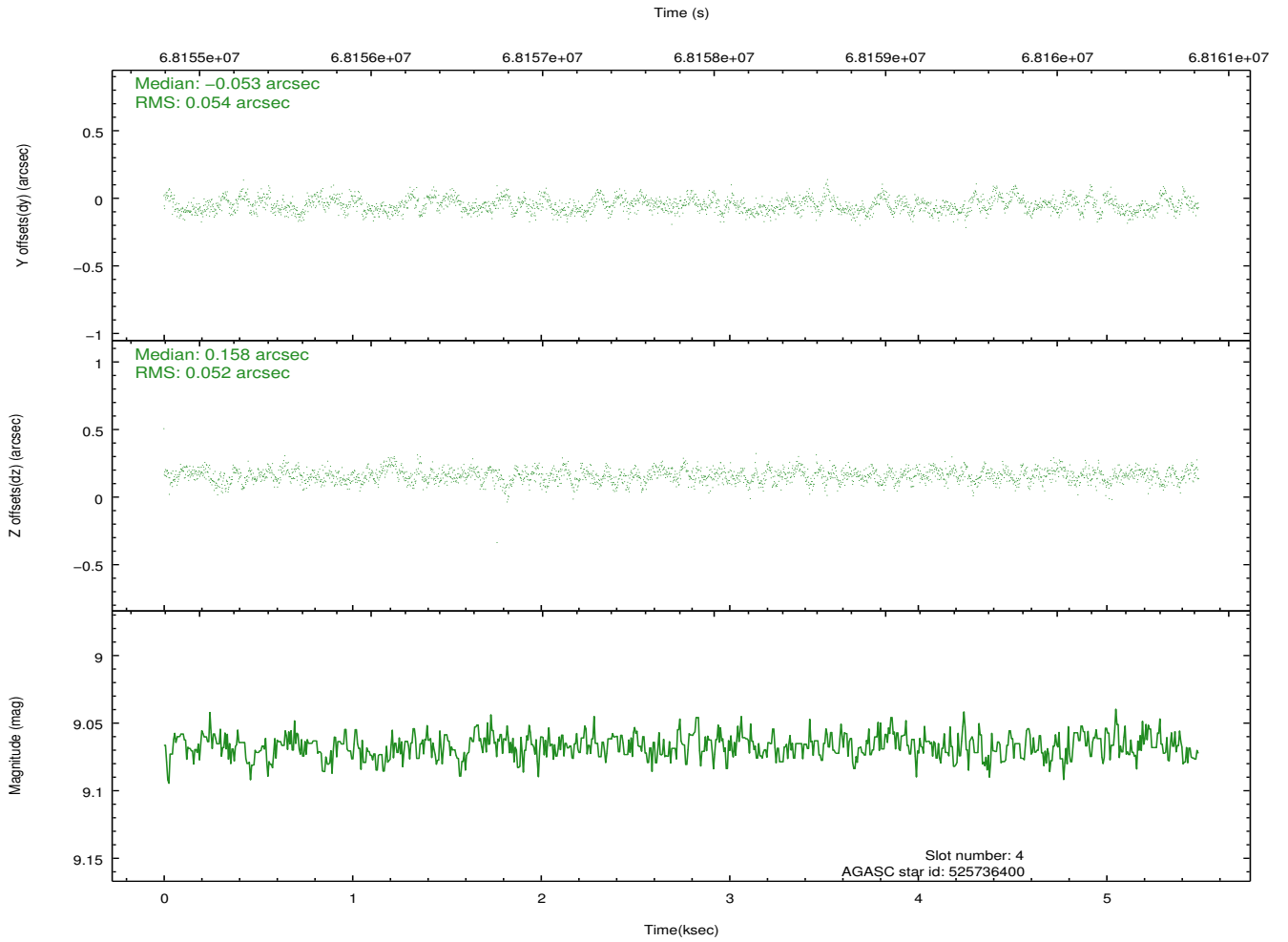
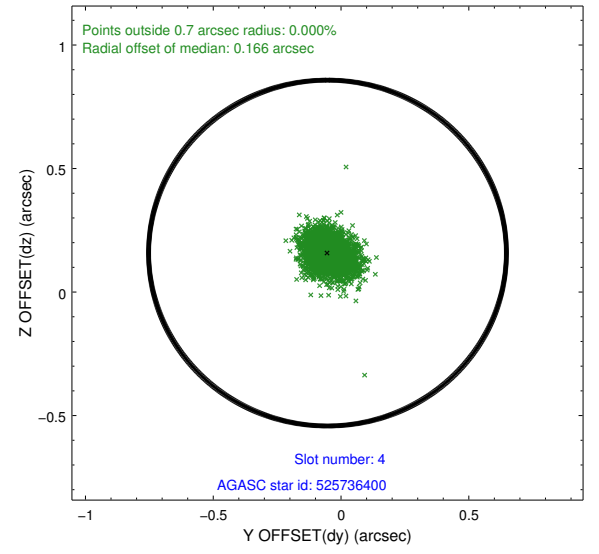
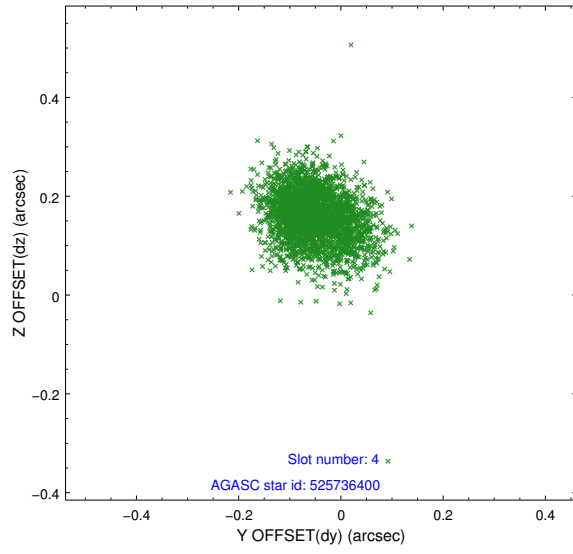
slot	status	id	mag	n_pts	med_dy	med_dz	dr1	dr2	ra	dec	mean_y	mean_z
0	FID	ACIS-S-3	7.36	1339	-0.034	-0.001	0.007	0.011	0.000000	0.000000	59.16	-1855.19
1	FID	ACIS-S-4	7.21	1339	0.012	0.020	0.006	0.010	0.000000	0.000000	2159.41	181.14
2	FID	ACIS-S-5	7.23	1339	-0.006	-0.008	0.006	0.011	0.000000	0.000000	-1805.43	176.15
3	GUIDE	525732232	9.12	2678	0.117	-0.098	0.066	0.107	351.669550	58.757012	1476.19	135.49
4	GUIDE	525736400	9.07	2676	-0.053	0.158	0.078	0.127	350.974563	59.175145	-73.56	1371.41
5	GUIDE	525609504	9.06	2677	-0.058	-0.014	0.080	0.129	349.896632	58.356658	-1539.03	-1881.74
6	GUIDE	525601208	9.23	2676	-0.171	0.099	0.113	0.182	349.910779	59.483724	-2192.85	2121.93
7	GUIDE	525207384	9.75	2676	0.165	-0.146	0.109	0.184	351.880308	58.083642	2337.43	-2164.15

2.4 Star Slots

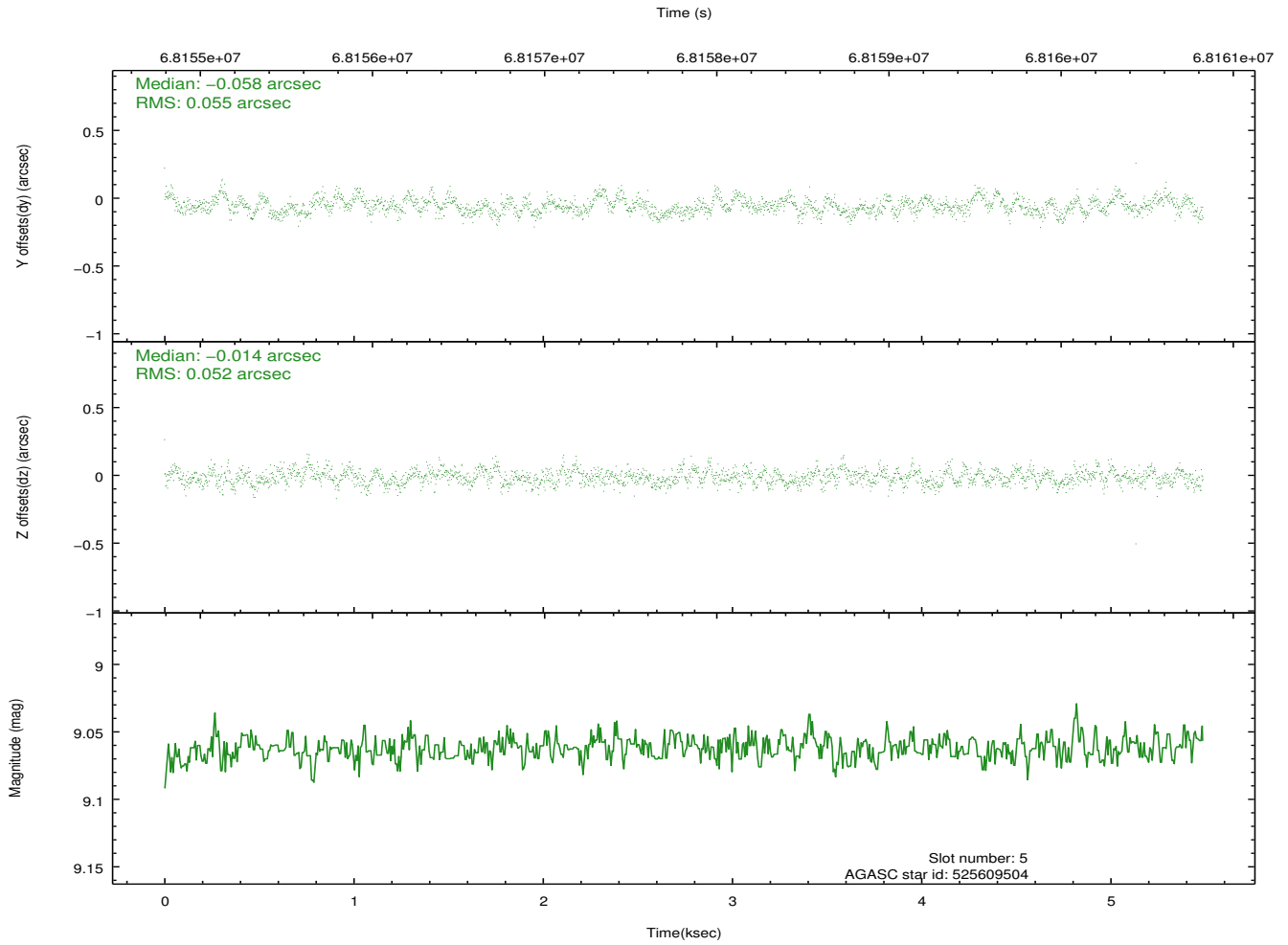
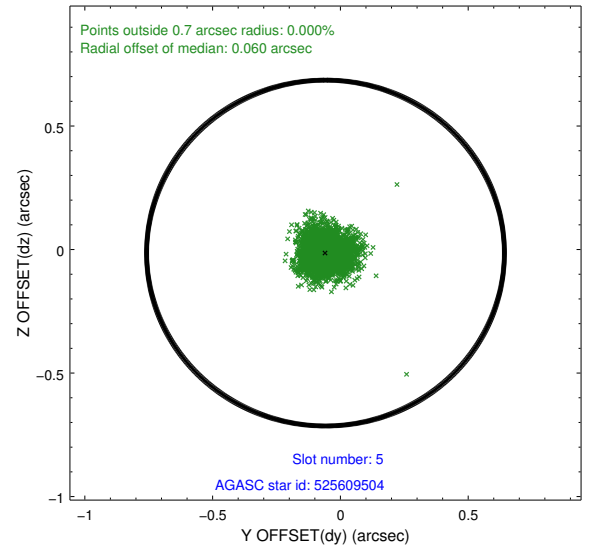
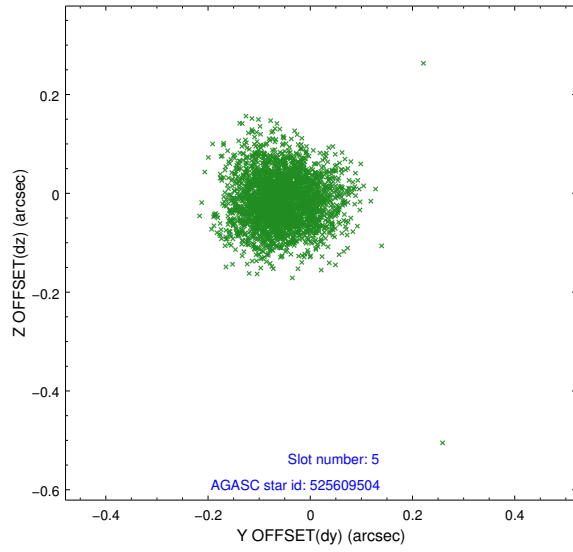
2.4.1 Slot 3



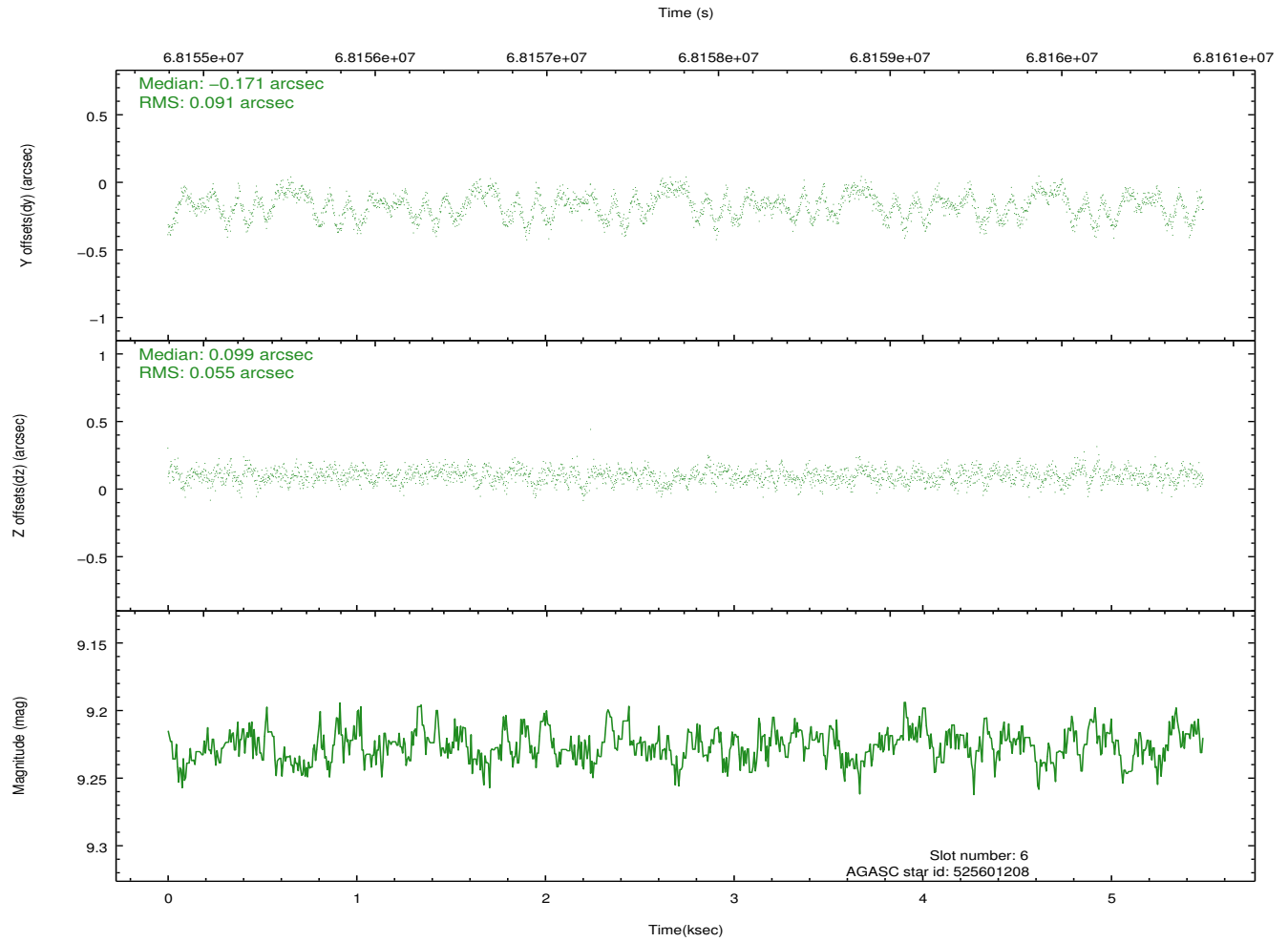
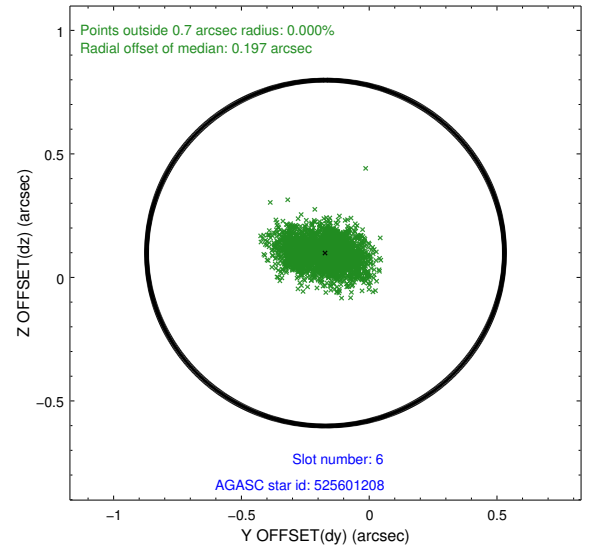
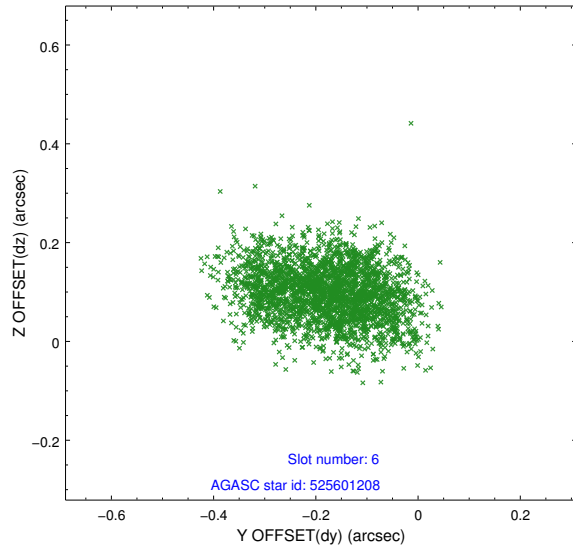
2.4.2 Slot 4



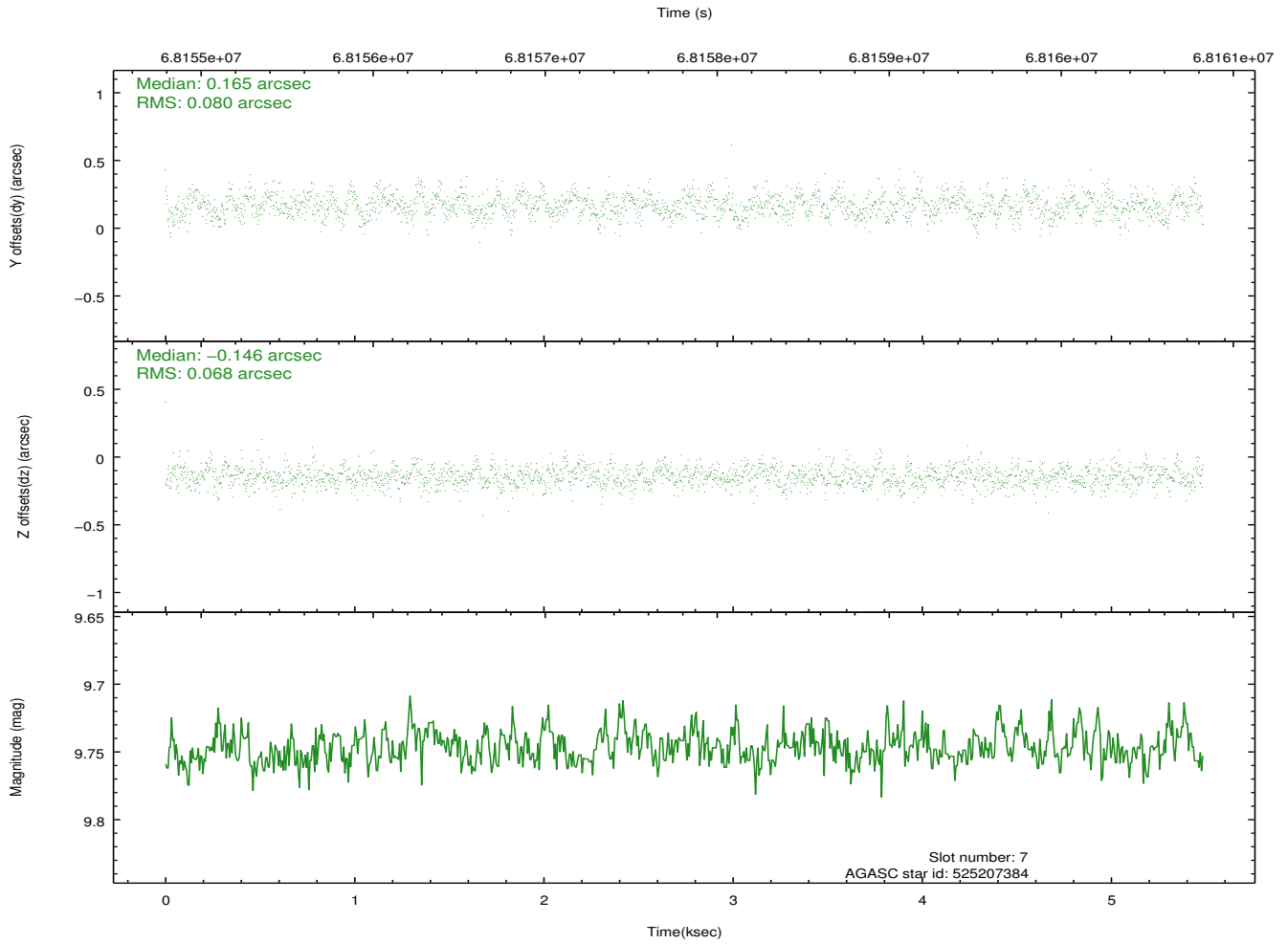
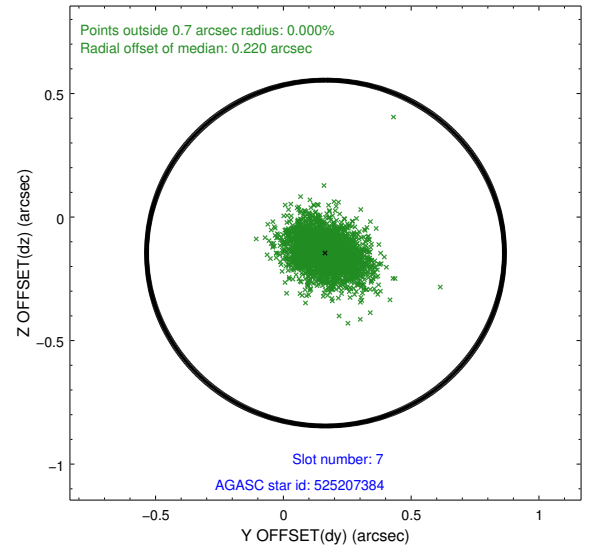
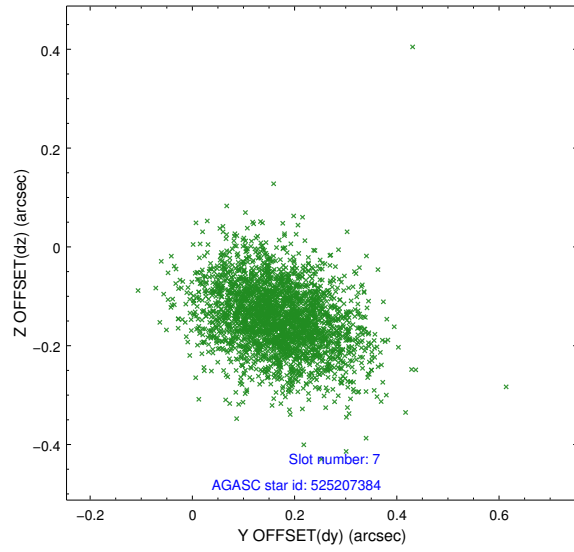
2.4.3 Slot 5



2.4.4 Slot 6

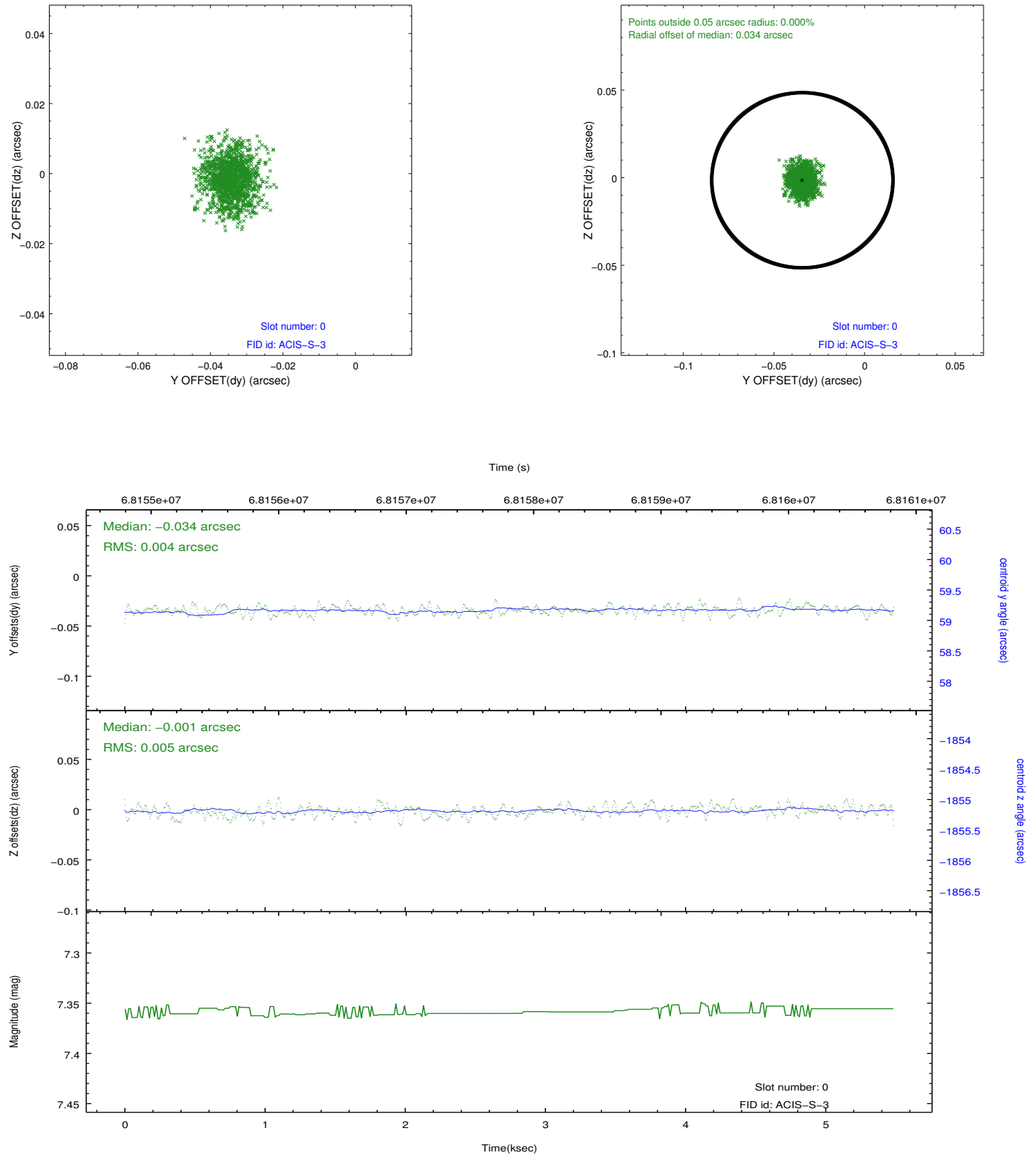


2.4.5 Slot 7

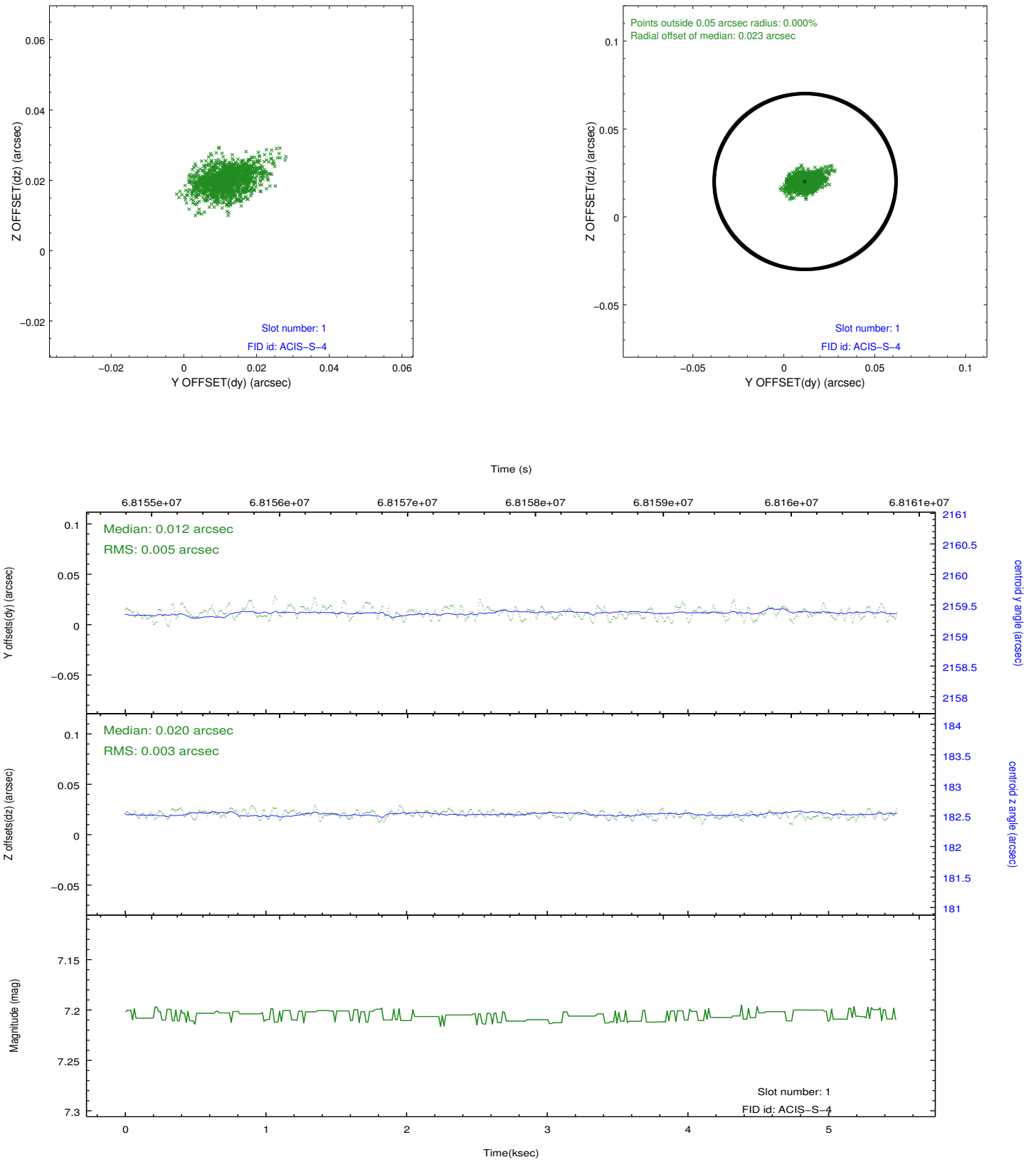


2.5 FID Slots

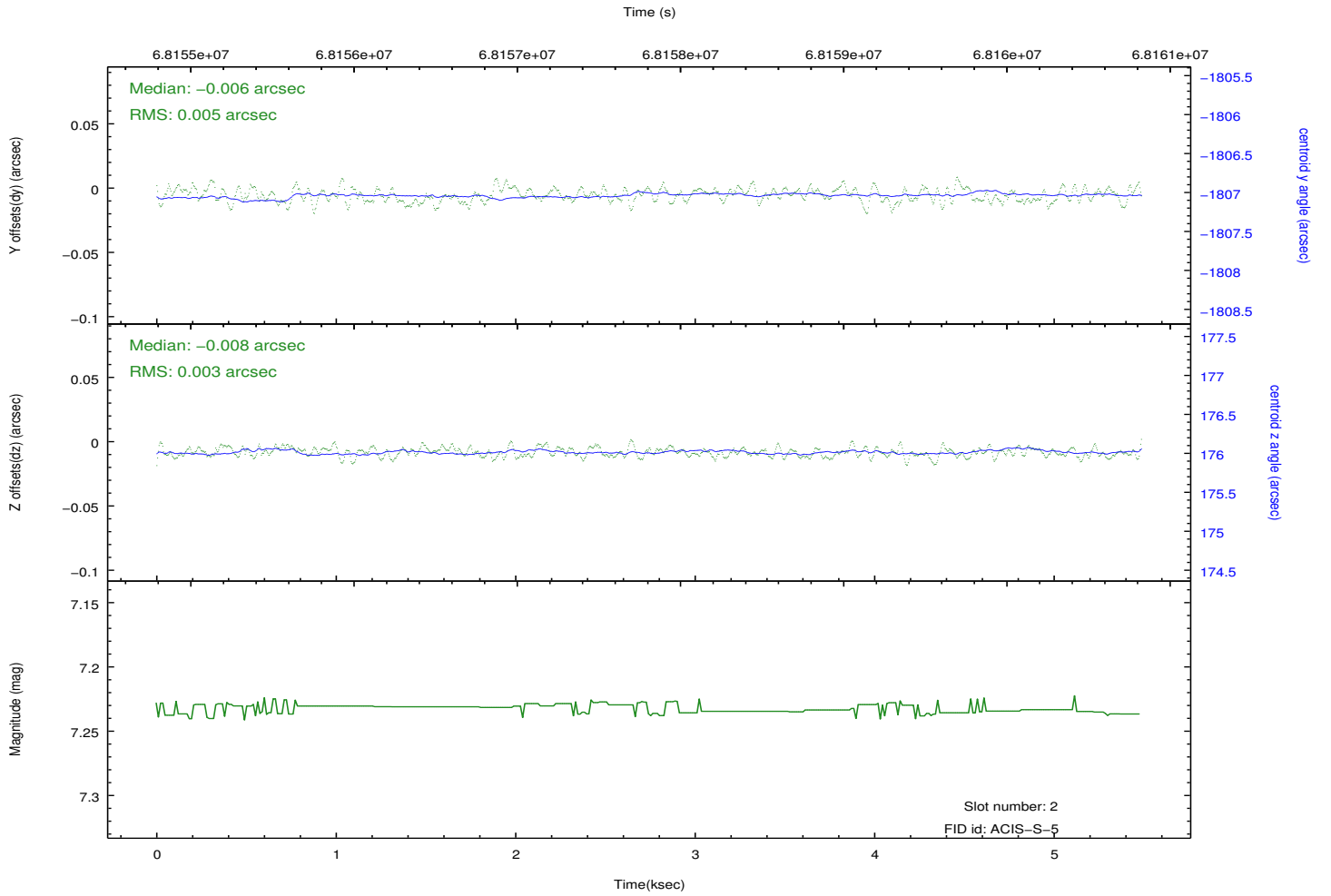
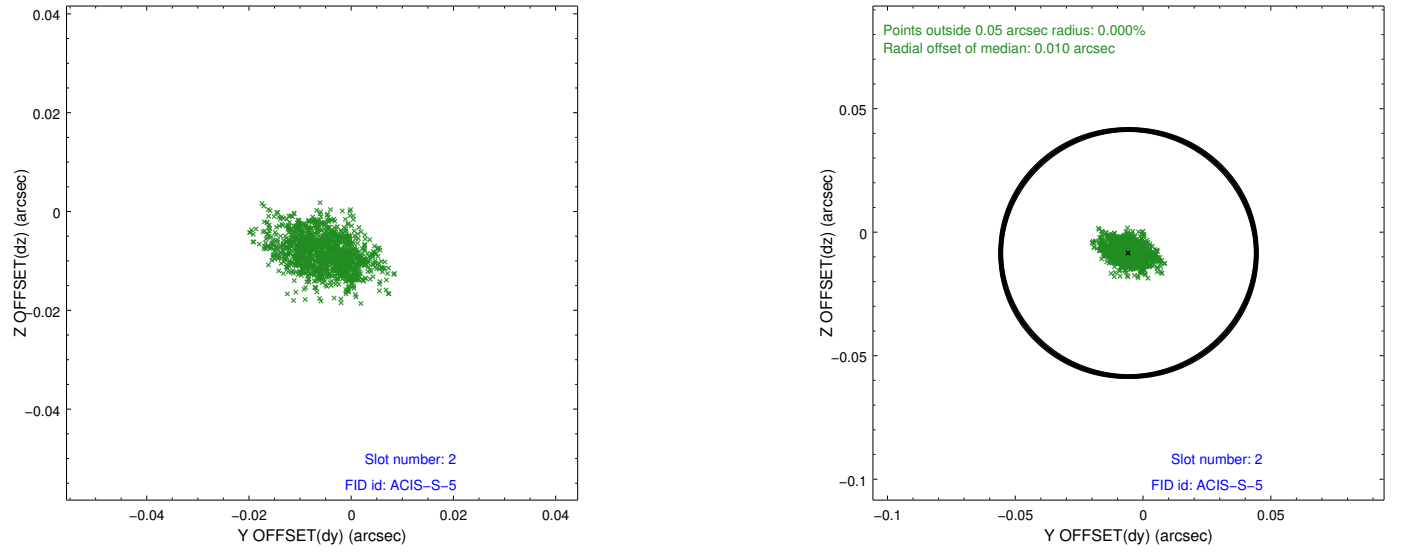
2.5.1 Slot 0



2.5.2 Slot 1



2.5.3 Slot 2



A Summary

A.1 Status

V&V Scientist	Jen Lauer
V&V Date (YYYY-MM-DD)	2012.08.24
V&V Edition	1
V&V Disposition and Status	OK
V&V Charge Time	2.105

A.2 Comments

Charge time for this ObsId remains at previous value of 2.105 ks, although with the current processing the charge time would have been 2.08 ksec. Window constraint met.